



**AgEcon** SEARCH  
RESEARCH IN AGRICULTURAL & APPLIED ECONOMICS

*The World's Largest Open Access Agricultural & Applied Economics Digital Library*

**This document is discoverable and free to researchers across the globe due to the work of AgEcon Search.**

**Help ensure our sustainability.**

Give to AgEcon Search

AgEcon Search  
<http://ageconsearch.umn.edu>  
[aesearch@umn.edu](mailto:aesearch@umn.edu)

*Papers downloaded from **AgEcon Search** may be used for non-commercial purposes and personal study only. No other use, including posting to another Internet site, is permitted without permission from the copyright owner (not AgEcon Search), or as allowed under the provisions of Fair Use, U.S. Copyright Act, Title 17 U.S.C.*

California Department of Food and Agriculture

Agricultural Commissioners' Crop Reports

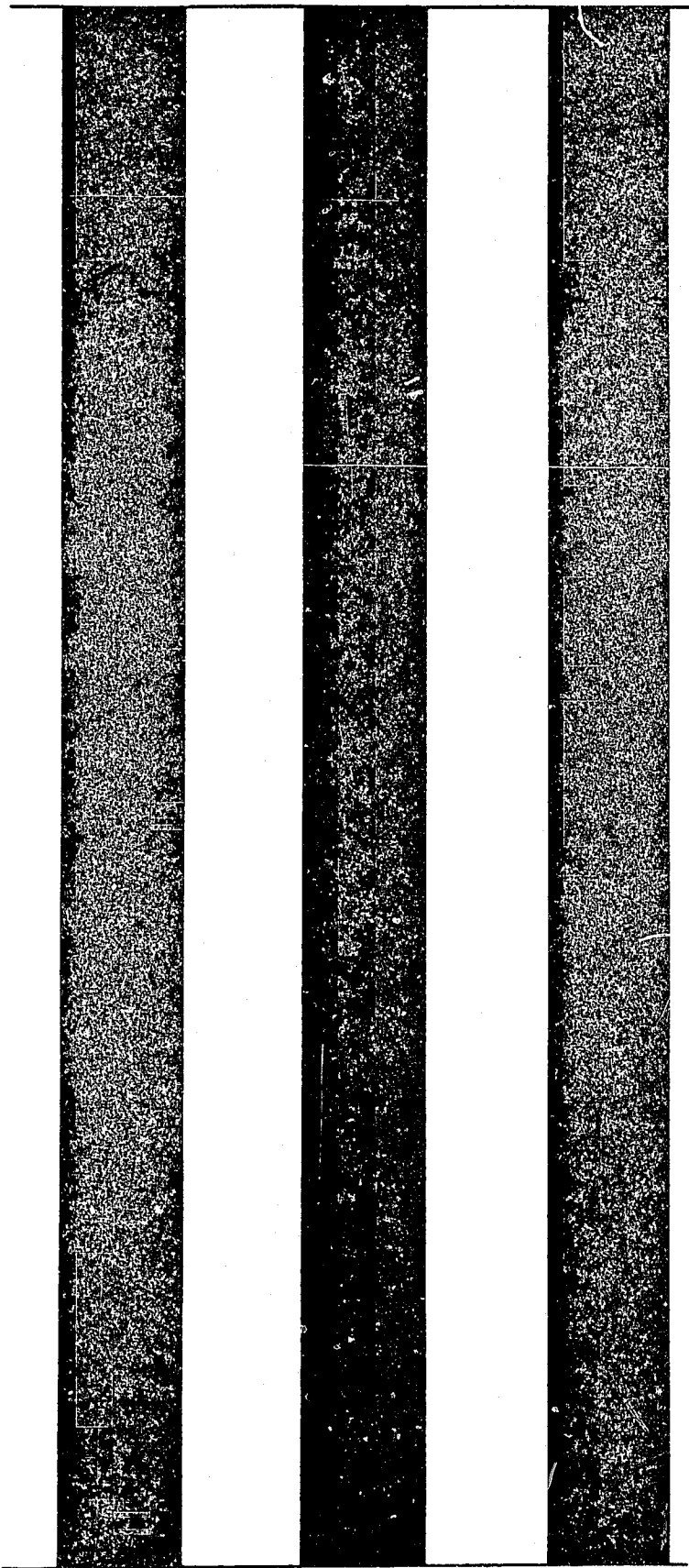
# Stanislaus County

1960-1963

California County Agricultural Commissioners' Reports from the California Department of Food and Agriculture. This collection consists of annual crop and livestock data from each of the 58 California Counties. The collection covers 1915-1981; digitization of the rest of the collection is forthcoming.

This digitization project was funded by the Giannini Foundation of Agricultural Economics, <http://giannini.ucop.edu/>.

The work was completed by the staff of the Giannini Foundation Library, University of California, Berkeley, <http://are.berkeley.edu/library/>. **Please contact the Library to consult the originals.**



1960

Y. L. V. F.

Stanislaus County

Agricultural Crop And  
Livestock Report  
1960

Stanislaus  
County

AGRICULTURAL EXTENSION SERVICE  
and  
DEPARTMENT OF AGRICULTURE  
STANISLAUS COUNTY  
cooperating

UNIVERSITY OF CALIFORNIA  
DAVIS  
JUN 28 1961  
LIBRARY

# Foreword

This Crop and Livestock report includes data on all of the commercial crops which are grown or produced in Stanislaus County. Acreages of permanent crops are reported of actual bearing acres, and other crops are reported in harvested acres. All prices are quoted on an F. O. B. basis, which is the gross return to the farmer. This income does not represent the net profit to the farmer, as the costs of production must be deducted. These costs of production vary so widely with the individual farmer, and with each crop, that no attempt has been made to develop a net income figure.

It can be noted that the content of this report is the same as reported last year. Figures are reported for both 1959 and 1960 for comparative purposes. These figures are reported in this manner also, for the purpose of getting uniform state-wide reporting. Most of the counties in California are using this same uniform method of reporting.

The total value of agricultural crops and livestock to the county for 1960 is \$137,744,691. This is an increase of \$7,317,154 over 1959, and is an all-time high. However, it should be noted that the report reflects an increase in livestock and poultry, and livestock and poultry products. In fact, the increase in these categories also makes up for a sizable decrease in vegetable crop production. Vegetable crop production showed a decline from \$17,930,391 in 1959 to \$13,201,767 in 1960. Field crops, seed crops, fruit and nut crops, and nursery products remained essentially the same as in 1959.

Almost all of this income goes into circulation in this county. Much of it passes, many times, through the hands of our local firms and individuals. The economy of the county is increased tremendously in actual value due to the income from this important industry.

The members of the Agricultural Extension Service and the Agricultural Commissioners offices have made an earnest endeavor to make this report as accurate as possible. Again this year, this report has been jointly prepared.

We wish to extend special appreciation to the members of our staffs who worked to make this report as accurate as possible. Also, to the various agencies, such as irrigation districts, processors and packers, local business concerns, producers, and many other persons who assisted us with information to make this report possible.

Respectfully submitted,

J. VERNON PATTERSON  
County Director of Extension

MILO M. SCHROCK  
County Agricultural Commissioner

## FIELD CROPS

Alfalfa - - Acreage increased about 15 per cent. Yields remained about the same with practically no rain damage during the season. Aphid damage continued to be fairly light. Prices dropped a little but gross returns were up about 10 per cent because of increased acreage. The outlook is for the acreage to be slightly higher with the possibility of lower prices.

Beans - - Total acreage decreased about 10 per cent with blackeyes and large limas showing the greatest decreases. Yields were down a little. Total volume was down considerably but prices were up. Gross income was down only slightly because of the higher prices.

Blackeye acreage was down one-third, yields were down and prices up. The net result was a drop in gross income.

Baby lima acreage increased by one-third. Prices continued good and gross income was up.

Large lima acreage dropped 25 per cent and yields were down because of hot weather and insect damage. Gross income was down considerably in spite of higher prices.

Grain - - Acreage remained about the same. Yields of barley and oats were generally good. Rice acreage increased about 10 per cent and yields were very good. Gross income was up as a result of the higher yields.

Field Corn - - Acreage planted for silage increased to offset the decrease in grain plantings. Dairymen continue to make greater use of silage in their feeding program while grain corn acreage continues to decrease because the crop has not been generally profitable.

Irrigated Pasture - - Acreage continued its decrease but at a slower rate. We are now down to 86,000 acres while in 1955 the acreage was over 100,000 acres.

Sugar Beets - - Acreage increased from 2,340 to 2,850 acres. Yields were down considerably but the gross income of \$730,575 makes it one of our "more respectable" field crops.

## SEED PRODUCTION

Alfalfa - - Certified acreage decreased again this time by 55 per cent. There were only 1,785 acres compared to 11,000 in 1955. Yields were only fair and prices varied - good for Moapa and Lahontan and poor for eastern varieties. There will probably be no change in acreage until we find some way to get better yields or higher prices.

Peas - - Acreage increased somewhat; yields and prices were up and gross income was double that of 1959.

Red Clover - - Acreage decreased 45 per cent because of low returns. Yields and prices remained low and the gross income was down to almost half of that in 1959.

## VEGETABLE CROPS

Tomatoes -- Cannery acreage up slightly. Yields and prices were a little better. A much lower tonnage went to the cannery from the "fresh" or shipping fields so that the net result was little change in the gross income from tomatoes which went to the cannery.

The "fresh" deal was a very poor one. In spite of a lower acreage and a satisfactory yield from those fields which were harvested, prices were very poor and the gross income was less than half of the 1959 figure.

Watermelons - - Watermelon acreage remained about the same. Yields were down a little and prices were considerably lower. Gross income was down.

Cantaloupes - - Acreages were off slightly. Yields were off considerably and prices were up. The net result was a gross income of about 40 per cent lower than in 1959.

Honeydews - - Acreage increased by more than one-third. Harvested tonnage was down and prices were off considerably. The gross income was down only a little but there was little profit for the grower.

Other melons - - The gross income remained about the same. Yields of Persians were way down but were average for the other varieties. Gross income was about the same.

Peas - - Acreages were down slightly. Prices were off but yields were up. Net result was about 15 per cent increase in net income.

Spinach - - The spinach deal remains about the same. Acreages were up a little while prices were down a little. The gross income was up slightly.

Lima Beans (Processing) - - The bean deal was a little better this year. Acreages, yields, prices and gross income were up a little. Insect control continues to be the most important factor in arriving at the high quality beans which are necessary.

Onions - - Acreage decreased by almost half. Prices remained the same.

## FRUIT AND NUT CROPS

Almonds - - The almond crop, while much smaller than the record 1959 crop, was about normal. The price received was above the 1959 level and about the average for the past several years.

Apricots - - Apricot production was only slightly less than in 1959. The per acre yield was also a little less than the year before. The average price was also a little lower than that of 1959 so the income from apricots for the county was slightly lower.

Boysenberries - - In the face of a better price the acreage continued to go down due to pressure from labor difficulties. The price received was the best in four years. Growers paid more for harvest so that net income was not as good as expected.

Clingstone Peaches - - Clingstone peach yields were greater than in 1959. The price was lower than before but the total production enough higher so the gross income was a little more.

Freestone Peaches - - Freestone peach production was greater than the previous year. The price received was lower but the total production was enough higher to boost the gross county income.

Grapes - - The large increase in acreage throughout the state is reflected in the lower price received by growers of Thompson seedless. The record breaking heat waves in May and June reduced the crop considerably in the dry wine area; certain wine grapes from this area were substituted for these. The growers received as much as \$56. Other wine grapes received the Thompson Seedless price tending to reduce the average paid for wine grapes.

Nectarines - - The nectarine yield was less than in 1959 and so was the price. The combined results caused about a 22% drop in gross income.

Strawberries - - Due to a stronger price gross income came up even though acreage and yield were down. Most growers suffered extremely heavy losses when rain hit just prior to or during the first harvest. An inadequate supply of good domestic pickers plagued the growers throughout the season.

Walnuts - - Walnut yields per acre were higher than in 1959. The price per ton was also higher and as a result the county gross income was higher.

#### LIVESTOCK AND POULTRY

Beef Cattle - - The inventory of cattle on hand as of January 1, 1961 shows a slight decrease over the previous year. A shift is taking place in this area. Fewer beef cattle are being carried on permanent pastures and the numbers of dairy replacement heifers on these pastures is still on the increase. More cattle are being finished for market in feed lots and this trend will likely continue in 1961. Little change in numbers has been noted in the range cow-calf operations during the past year.

Swine - - Hog numbers are still on the upswing in the county and market prices strengthened during the year. More people are getting in the hog business and from all indications the numbers of hogs per farm will be noticeably increased in 1961.

Sheep - - The trend in this area is toward a gradual reduction in numbers. Much of this can be attributed to poor economic returns from sheep. Fat lamb prices held up during the early part of the year; however the market dropped considerably during the last half. Grease wool pool also declined in 1960 which led to a further decline in numbers.

Horses and Mules - - Most of the population included under this heading can be credited to horses. Mules make up a very small percentage and these are mostly pack animals. Horse numbers are on the increase and will continue in this direction in 1961.

Dairying - - This is our county's largest agriculture industry and accounts for approximately 25 per cent of the total agriculture income. Many Grade B (manufacturing milk) dairymen and have quit dairying--their cows are being absorbed by the larger Grade A (market milk) dairies. The trend of fewer dairies but larger ones continues, resulting in improved management and efficiency.



Poultry - - The poultry industry shows a considerable increase in 1960 over 1959. In all cases the price per pound for meat or price per dozen for eggs received by the poultrymen was higher during 1960. The large changes shown between 1959 and 1960 in the case of fryers and turkeys are due to changing the figures to more nearly meet the 1959 agriculture census report.

In total the poultry industry is becoming one of the largest agricultural industries in the county.

ACREAGE ESTIMATES OF STANISLAUS COUNTY FRUIT AND NUT CROPS  
1960

by Stanislaus County Department of Agriculture  
Milo M. Schrock, Agricultural Commissioner

<u>CROP</u>	<u>BEARING ACRES</u>	<u>NON-BEARING</u>
<u>ALMONDS</u>		
Davey - - - - -	47	488
Drake - - - - -	323	18
IXL - - - - -	178	---
Jordonola - - - - -	348	5
Mission - - - - -	1,933	440
Ne Plus Ultra - - - - -	685	165
Nonpareil - - - - -	2,907	1,605
Peerless - - - - -	51	5
Other Almonds - - - - -	39	73
TOTAL ALMONDS - - - 1960	6,511	2,799
1959	6,467	2,788
<u>APRICOTS</u>		
Blenheim-Royal - - - - -	182	75
Moorpark-Hemskirke - - - - -	5	---
Tilton - - - - -	2,261	1,095
Other Apricots - - - - -	1	37
TOTAL APRICOTS - - - 1960	2,449	1,207
1959	2,364	1,365
<u>CHERRIES</u>		
Bing - - - - -	19	43
Black Republican - - - - -	2	1
Lambert - - - - -	---	10
Royal Ann - - - - -	30	16
Tartarian - - - - -	1	4
Other Cherries - - - - -	---	1
TOTAL CHERRIES - - - 1960	52	75
1959	35	73
<u>CHESTNUTS</u> - - - - -		
	5	5
<u>FIGS</u>		
Black - - - - -	28	---
Calimyrna - - - - -	1	---
Kadota - - - - -	15	---
TOTAL FIGS - - - - - 1960	44	---
1959*		
<u>GRAPES, RAISIN</u>		
Muscat - - - - -	87	---
Thompson Seedless - - - - -	6,505	809
TOTAL RAISIN VARIETIES - - - 1960	6,592	809
1959	6,359	897

\*Figures not available

CROPBEARING ACRESNON-BEARINGGRAPES, TABLE

Concord - - - - -	3	---
Emperor - - - - -	97	---
Malaga - - - - -	349	---
Red Malaga - - - - -	41	---
Ribier - - - - -	48	---
Tokay - - - - -	19	---
Other Table Grapes - - - - -	26	---
TOTAL TABLE VARIETIES - - - 1960	583	
1959	583	

GRAPES, WINE

Alicante Bouschet - - - - -	630	3
Burger - - - - -	33	---
Carignane - - - - -	3,861	96
Feher Szagos - - - - -	34	---
Franken Riesling - - - - -	8	7
French Columbard - - - - -	81	---
Grand Noir - - - - -	10	---
Grenache - - - - -	1,301	529
Malvoisie (Malvasia) - - - - -	26	---
Mission - - - - -	528	229
Palomino - - - - -	762	44
Petite Sirah - - - - -	7	---
Salvador - - - - -	141	---
Valdepenas - - - - -	224	78
Zinfandel - - - - -	270	---
Other Wine Grapes - - - - -	61	14
TOTAL WINE VARIETIES - - - 1960	7,977	1,000
1959	7,829	1,066
TOTAL ALL GRAPES - - - 1960	15,152	1,809
1959	14,771	1,963

NECTARINES

Early Le Grand - - - - -	8	---
Freedom - - - - -	10	---
Gower - - - - -	8	---
Late Le Grand - - - - -	24	1
Le Grand - - - - -	113	15
Quetta - - - - -	16	---
Red Grand - - - - -	13	3
John Rivers - - - - -	11	1
Sun Grand - - - - -	64	27
Other Nectarines - - - - -	81	20
TOTAL NECTARINES - - - 1960	348	67
1959	297	150

OLIVES

Ascolano - - - - -	1	---
Manzanillo - - - - -	104	---
Mission - - - - -	164	---
Sevillano - - - - -	2	---
Other Olives - - - - -	1	---
TOTAL OLIVES - - - 1960	272	
1959	274	1

<u>CROP</u>	<u>BEARING ACRES</u>	<u>NON-BEARING</u>
<u>ORANGES</u>		
Navel - - - - -	21	---
Valencia - - - - -	1	---
TOTAL ORANGES --- 1960	<u>22</u>	
1959*		
<u>PEACHES, CLING</u>		
Andora - - - - -	500	4
Carolyn- - - - -	240	51
Corona - - - - -	496	90
Cortez - - - - -	1,798	100
Dixon - - - - -	452	1,039
Fortuna- - - - -	1,370	129
Gaume - - - - -	1,311	306
Giblin - - - - -	28	---
Gomes-Stuart - - - - -	1,555	94
Halford- - - - -	3,926	1,309
Howard - - - - -	28	---
Johnson- - - - -	73	---
Libbee - - - - -	5	---
Palora - - - - -	1,370	323
Peak - - - - -	930	49
Phillips - - - - -	60	---
Shasta - - - - -	202	36
Sims - - - - -	112	4
Sowell - - - - -	19	217
Stanford - - - - -	164	45
Starn - - - - -	306	468
Sullivan - - - - -	187	53
Vivian - - - - -	566	676
Walton - - - - -	5	---
Williams	38	---
Wiser	82	145
Other Cling Peaches	237	433
TOTAL CLING PEACHES --- 1960	<u>16,060</u>	<u>5,571</u>
1959	17,572	5,202
<u>PEACHES, FREESTONE</u>		
Babcock - - - - -	3	---
Blazing Gold - - - - -	2	---
Dixired - - - - -	---	1
July Elberta - - - - -	---	6
Elberta - - - - -	2,686	541
Gold Dust - - - - -	3	---
J. H. Hale - - - - -	119	1
Kirkman Gem - - - - -	31	5
Lovell - - - - -	161	3
Merrill Gem - - - - -	4	---
Muir - - - - -	29	10
Nector - - - - -	4	---
Red Haven - - - - -	12	6
Rio Oso Gem - - - - -	256	9
Other Freestone Peaches	44	170
TOTAL FREESTONE PEACHES --- 1960	<u>3,354</u>	<u>752</u>
1959	3,206	1,107

\*Figures not available

<u>CROP</u>		<u>BEARING ACRES</u>	<u>NON-BEARING</u>
<u>PEACHES</u> (Continued)			
	TOTAL ALL PEACHES ---1960	19,414	6,323
	1959	20,778	5,305
<u>PEARS</u>			
	Bartlett - - - - -	4	183
	Winter Nelis - - - - -	2	6
	Other Pears - - - - -		22
	TOTAL PEARS --- 1960	<u>6</u>	<u>211</u>
	1959*		
<u>PECANS</u>	1960	23	23
	1959	22	1
<u>PERSIMMONS</u>	1960	15	15
	1959	15	
<u>PLUMS</u>	1960	29	3
	1959	25	36
<u>POMEGRANATES</u>	1960	9	9
	1959	9	
<u>PRUNES</u>	1960	---	2
	1959*	---	---
<u>QUINCES</u>	1960	2	2
	1959*	---	---
<u>WALNUTS</u>			
	Blackmer - - - - -	60	28
	Concord - - - - -	96	---
	Eureka - - - - -	3,161	1,042
	Franquette - - - - -	3,922	346
	Hartley - - - - -	1,724	1,646
	Mautner - - - - -	1	---
	Mayette - - - - -	591	8
	Nugget - - - - -	---	16
	Payne - - - - -	1,983	844
	Placentia - - - - -	7	---
	Santa Barbara Soft Shell - - - - -	1	---
	Waterloo - - - - -	164	140
	Other Walnuts - - - - -	37	120
	Seedlings - - - - -	54	49
	TOTAL WALNUTS --- 1960	<u>11,801</u>	<u>4,239</u>
	1959	11,417	4,484
<u>WALNUTS, BLACK</u>	1960	1,653	---
	1959*	---	---

\*Figures not available

FIELD CROPS: ACREAGE, PRODUCTION, AND VALUE, 1959-60

Crop	Year	Harvested acres	Production		Unit	Value	
			Per acre	Total		Per unit	Total
<u>Barley</u>	1960	53,000	1.10	58,300	Ton	41.20	\$ 2,401,960
	1959	53,000	0.80	42,400	"	43.00	1,823,200
<u>Beans, dry edible</u> (Blackeyes)	1960	6,400	0.65	4,160	Ton	175.00	728,000
	1959	9,800	0.80	7,840	"	125.00	980,000
(Baby Limas)	1960	6,000	1.10	6,600	Ton	154.00	1,016,400
	1959	4,500	1.10	4,950	"	153.00	757,350
(Large Limas)	1960	10,200	0.75	7,650	Ton	270.00	2,065,500
	1959	13,800	0.93	12,834	"	212.00	2,720,808
(Other Varieties)	1960	10,300	0.75	7,725	Ton	170.00	1,313,250
	1959	9,800	0.70	6,860	"	170.00	1,166,200
<u>Corn</u>	1960	5,000	1.20	6,000	Ton	49.00	294,000
	1959	6,800	1.30	8,840	"	47.00	415,480
<u>Cotton Lint</u>	1960	97	1,000	97,000	Lbs.	0.336	32,592
	1959	130	800	104,000	"	0.35	36,400
<u>Cottonseed</u>	1960	---	0.80	78	Ton	44.00	3,432
	1959	---	0.65	85	"	44.00	3,740
<u>Hay</u> (Alfalfa)	1960	66,000	6.60	435,600	Ton	23.00	10,018,800
	1959	57,000	6.70	381,900	"	24.00	9,165,600
(Grain)	1960	16,000	1.70	27,200	Ton	20.00	544,000
	1959	16,000	1.60	25,600	"	22.00	563,200
(Wild)	1960	1,000	0.80	800	Ton	20.00	16,000
	1959	3,000	0.90	2,700	"	23.00	62,100
<u>Oats</u>	1960	5,300	0.80	4,240	Ton	46.00	195,040
	1959	5,500	0.70	3,850	"	46.50	179,025
<u>Pasture &amp; Range</u> (Irrigated pasture)	1960	86,000	---	---	---	45.00	3,870,000
	1959	87,000	---	---	---	45.00	3,915,000
(Sudan Grass)	1960	4,060	---	---	---	30.00	121,800
	1959	4,150	---	---	---	30.00	124,500
(Range)	1960	430,000	---	---	---	4.00	1,720,000
	1959	440,000	---	---	---	4.00	1,760,000

FIELD CROPS: ACREAGE, PRODUCTION, AND VALUE, 1959-60

Crop	Year	Harvested acres	Production			Value	
			Per acre	Total	Unit	Per unit	Total
<u>Rice</u> (Total)	1960	2,192	2.00	4,384	Ton	\$2.00	\$ 359,488
	1959	1,900	1.90	3,610	"	80.00	288,800
<u>Silage</u> (Corn (Total)	1960	21,600	12.00	259,200	Ton	5.00	1,296,000
	1959	18,000	12.00	216,000	"	5.00	1,080,000
(Lima Bean (Total) & Pea	1960	4,000	4.00	16,000	Ton	0.50	8,000
	1959	5,300	4.00	21,200	"	0.50	10,000
<u>Sorghum Grain</u> (Total)	1960	2,900	1.50	4,350	Ton	40.00	174,000
	1959	3,000	1.25	3,750	"	41.00	153,750
<u>Straw</u> (Bean (Total)	1960	3,300	0.80	2,640	Ton	9.50	25,080
	1959	5,000	0.80	4,000	"	10.00	40,000
(Grain (Total)	1960	7,000	0.90	6,300	Ton	10.00	63,000
	1959	7,000	0.60	4,200	"	10.00	42,000
<u>Wheat</u> (Total)	1960	600	1.30	780	Ton	60.00	46,800
	1959	450	1.00	450	"	61.00	27,450
<u>Sugar Beets</u> (Total)	1960	2,851	20.50	58,446	Ton	12.50	730,575
	1959	2,340	29.70	69,498	"	11.76	817,296
<u>Misc. Field Crops</u>	1960	1,300	---	---	Acre	100.00	130,000
	1959	1,300	---	---	"	100.00	130,000
TOTAL	1960	745,100	XXX	XXX	XXX	XXX	27,173,717
	1959	754,770	XXX	XXX	XXX	XXX	26,262,499

SEED CROPS: ACREAGE, PRODUCTION, AND VALUE, 1959-60

<u>Alfalfa</u> (Certified (Total)	1960	1,785	525	937,125	Lbs.	0.365	342,051
	1959	4,100	250	1,025,000	"	0.34	348,500
(Common (Total)	1960	1,000	600	600,000	Lbs.	0.28	168,000
	1959	400	250	100,000	"	0.20	20,000
<u>Peas</u> (Total)	1960	1,100	2,400	2,640,000	Lbs.	0.065	171,600
	1959	850	2,000	1,700,000	"	0.0475	80,750
<u>Red Clover</u> (Total)	1960	1,330	525	698,250	Lbs.	0.28	195,510
	1959	2,400	500	1,200,000	"	0.30	360,000

SEED CROPS: ACREAGE, PRODUCTION, AND VALUE, 1959-60

Misc. Field and Vegetable Crops	1960	1,300	---	---	Acre	140.00	\$ 182,000
	1959	1,300	---	---	"	140.00	182,000
TOTAL	1960	6,515	XXX	XXX	XXX	XXX	1,059,161
	1959	9,050	XXX	XXX	XXX	XXX	991,250

VEGETABLE CROPS: ACREAGE, PRODUCTION, AND VALUE, 1959-60

Crop	Year	Harvested acres	Production			Value	
			Per acre	Total	Unit	Per Unit	Total
Asparagus	1960	10	1.6	16	Ton	190.00	\$ 3,040
	1959	28	3.5	98	"	232.00	22,736
<u>Beans, processing</u>	1960	7,500	1.35	10,125	Ton	145.00	1,468,125
	1959	7,100	1.25	8,875	"	140.00	1,242,500
<u>Broccoli</u>	1960	200	3.00	600	Ton	140.00	84,000
	1959	236	2.75	649	"	120.00	77,880
<u>Cabbage</u>	1960	12	15.0	180	Ton	20.00	3,600
	1959	45	18.0	810	"	14.00	11,340
<u>Carrots</u>	1960	280	18.0	5,040	Ton	20.00	100,800
	1959	564	24.0	13,536	"	35.00	473,760
<u>Cauliflower</u>	1960	400	5.00	2,000	Ton	130.00	260,000
	1959	232	3.25	754	"	125.00	94,250
<u>Corn, sweet</u>	1960	550	4.0	2,200	Ton	80.00	176,000
	1959	775	6.0	4,650	"	24.00	111,600
<u>Cucumbers</u>	1960	42	10.0	420	Ton	33.33	14,000
	1959	116	10.0	1,160	"	72.00	83,520
<u>Lettuce, head</u>	1960	650	7.0	4,550	Ton	76.00	345,800
	1959	810	7.3	5,913	"	72.85	430,762
<u>Melons</u>							
(Cantaloupe)	1960	1,300	3.8	4,940	Ton	110.00	543,400
	1959	1,546	8.0	12,368	"	75.00	927,600
(Honeydews)	1960	3,900	6.5	25,350	Ton	70.00	1,774,500
	1959	2,830	8.0	22,640	"	87.50	1,981,000
(Persian)	1960	775	4.4	3,410	Ton	100.00	341,000
	1959	709	8.0	5,672	"	92.50	524,660
(Other Muskmelons)	1960	1,400	8.0	11,200	Ton	90.00	1,008,000
	1959	1,021	8.0	8,168	"	99.85	815,575
(Watermelons)	1960	1,700	12.5	21,250	Ton	17.50	371,875
	1959	1,630	14.0	22,820	"	23.00	524,860



VEGETABLE CROPS: ACREAGE, PRODUCTION, AND VALUE, 1959-60

Crop	Year	Harvested acres	Production		Unit	Value	
			Per acre	Total		Per unit	Total
<u>Onion</u> (Total)	1960	300	15.0	4,500	Ton	30.00	\$ 135,000
	1959	530	17.5	9,275	"	30.00	278,250
<u>Peas, green</u> (Total)	1960	2,500	2.1	5,250	Ton	71.00	372,750
	1959	2,700	1.5	4,050	"	81.00	328,050
<u>Peppers, Bell</u> (Total)	1960	850	10.7	9,095	Ton	79.00	718,505
	1959	623	6.0	3,738	"	165.00	616,770
<u>Pumpkins</u> (Total)	1960	200	12.0	2,400	Ton	15.00	36,000
	1959	230	10.0	2,300	"	16.00	36,800
<u>Spinach</u> (Total)	1960	1,950	7.1	13,845	Ton	22.50	311,512
	1959	1,841	7.0	12,887	"	23.25	299,623
<u>Squash</u> (Total)	1960	200	10.0	2,000	Ton	22.00	44,000
	1959	450	10.0	4,500	"	20.00	90,000
<u>Sweet Potatoes</u> (Total)	1960	511	3.3	1,686	Ton	160.00	269,760
	1959	407	3.5	1,425	"	160.00	228,000
<u>Tomatoes</u> (Fresh (Total)	1960	4,600	7.0	32,200	Ton	96.00	3,091,200
	1959	6,400	7.0	44,800	"	155.00	6,944,000
(Ripes to Cannery from "fresh fields)	1960	---	3.5	13,300	Ton	23.00	305,900
	1959	---	5.0	32,000	"	21.50	688,000
(Cannery	1960	3,500	16.0	56,000	Ton	23.00	1,288,000
	1959	2,990	15.0	44,850	"	21.50	964,275
<u>Turnips</u>	*1960	---	---	---	Ton	---	---
	1959	72	9.0	648	"	22.50	14,580
<u>Misc. Vegetables</u>	1960	900	---	---	Acre	150.00	135,000
	1959	800	---	---	"	150.00	120,000
TOTAL (Revised)	1960	34,230	XXX	XXX	XXX	XXX	13,201,767
	1959	34,685	XXX	XXX	XXX	XXX	17,930,391

\*Figures not available

FRUIT & NUT CROPS: ACREAGE, PRODUCTION, AND VALUE, 1959-60

Crop	Year	Harvested acres	Production		Unit	Value	
			Per acre	Total		Per unit	Total
<u>Almonds</u>	1960	6,511	.641	4,173	Ton	\$520.00	\$ 2,169,960
	1959	6,467	1.10	7,114	"	440.00	3,130,160
<u>Apricots (Total)</u>	1960	2,449	8.33	20,400	Ton	----	1,738,562
	1959	2,364	8.74	20,652	"	----	1,862,550
(Canned)	1960	----	----	15,390	Ton	90.00	1,385,100
	1959	----	----	13,902	"	100.00	1,390,200
(Frozen)	1960	----	----	110	Ton	90.00	9,900
	1959	----	----	125	"	100.00	12,500
(Juice)	1960	----	----	4,350	Ton	60.00	261,000
	1959	----	----	4,625	"	70.00	323,750
(Dried)	1960	----	----	100	Ton	560.00	56,000
	1959	----	----	140	"	740.00	103,600
(Pits)	1960	----	----	625	Ton	42.50	26,562
	1959	----	----	650	"	50.00	32,500
<u>Bushberries</u> (Ollalie)	1960	32	5.0	160	Ton	280.00	44,800
	1959	67**	5.9	100.3**	"	160.00	160,481
(Boysen & Young- berries)	1960	617	4.4	2,715	Ton	280.00	760,200
	1959	860	4.9	4,214	"	130.00	547,820
<u>Cherries</u>	*1960	----	----	----	Ton	-----	-----
	1959	35	2.29	80	"	360.00	28,800
<u>Grapes (Total)</u> All	1960	15,152	----	118,503	Ton	-----	4,292,602
	1959	14,771	----	119,150	"	-----	4,956,221
(Raisin varieties (Total))	1960	6,592	7.5	49,440	Ton	-----	1,539,870
	1959	6,359	8.3	52,779	"	-----	2,139,350
(Fresh market)	1960	----	----	150	Ton	60.00	9,000
	1959	----	----	150	"	62.00	9,300
(Dried - Green Wt. Natural Thompsons)	1960	----	----	400	Ton	60.00	24,000
	1959	----	----	400	"	55.00	22,000
(Golden bleached Thompson's Green Weight)	1960	----	----	6,000	Ton	40.00	240,000
	1959	----	----	5,220	"	42.00	219,240

\*Figures not available  
\*\*Only 17 acres harvested

FRUIT & NUT CROPS: ACREAGE, PRODUCTION, AND VALUE, 1959-60

Crop	Year	Harvested acres	Production			Value	
			Per acre	Total	Unit	Per unit	Total
(Canned)	1960	---	---	650	Ton	58.00	\$ 37,700
	1959	---	---	650	"	53.00	34,450
(Crushed)	1960	---	---	40,262	Ton	35.00	1,409,170
	1959	---	---	46,359	"	40.00	1,854,360
(Table Varieties (Total))	1960	583	9.0	5,247	Ton	---	190,492
	1959	583	9.1	5,305	"	---	221,567
(Fresh Market)	1960	---	---	80	Ton	56.00	4,480
	1959	---	---	60	"	65.00	3,900
(Crushed)	1960	---	---	5,167	Ton	36.00	186,012
	1959	---	---	5,245	"	41.50	217,667
(Wine Varieties (Total))	1960	7,977	---	63,816	Ton	---	2,562,240
	1959	7,829	7.8	61,066	"	---	2,595,304
(Fresh Market)	1960	---	---	3,200	Ton	43.00	137,600
	1959	---	---	4,503	"	42.50	191,377
(Crushed)	1960	---	---	60,616	Ton	40.00	2,424,640
	1959	---	---	56,563	"	42.50	2,403,927
<u>Nectarines</u> (Total)	1960	348	---	797	Ton	84.00	66,948
	1959	295	---	903	"	95.00	85,785
<u>Olives</u> (Total)	1960	272	---	90	Ton	55.00	4,950
	1959	271	---	44	"	70.00	3,080
<u>Peaches, Clings</u> (Total)	1960	16,060	12.4	199,144	Ton	56.95	11,341,250
	1959	17,572	11.08	194,723	"	---	11,311,264
<u>Peaches, Freestone</u> (Total)	1960	3,354	12.5	41,925	Ton	---	1,677,000
	1959	3,206	5.83	18,690	"	---	1,071,695
<u>Strawberries</u> (Total)	1960	270	5.3	1,431	Ton	278.00	397,818
	1959	253	6.0	1,518	"	250.00	379,500
<u>Walnuts</u>	1960	11,801	.421	4,968	Ton	510.00	2,533,680
	1959	11,417	.369	4,213	"	480.00	2,022,240
TOTAL	1960	56,866	XXX	XXX	XXX	XXX	25,027,770
	1959	57,578	XXX	XXX	XXX	XXX	25,559,596

NURSERY PRODUCTS: PRODUCTION AREA, SALES, AND VALUE, 1959-60

Item	Year	Production area		Quantity sold by Producers	Unit	Value	
		House sq. ft.	Field acres			Per unit	Total
<u>Nursery Crops</u>							
(Deciduous fruit & nut trees)	1960	xxx	45	590,368	Plants		\$ 330,335
	1959	xxx	80	479,617	"		334,794
(Grapevines)	1960	xxx	10	238,840	Plants		14,840
	1959	xxx	10	330,000	"		20,000
(Rose plants)	1960	xxx	131	1,940,000	Plants		660,000
	1959	xxx	200	2,895,000	"		1,023,000
(Small fruit plants)	1960	xxx	30	5,000,000	Plants		48,000
	1959	xxx	60	14,507,000	"		203,385
(Vegetable plants)	1960	xxx	12	3,872,900	Plants		17,695
	1959	xxx	7	2,520,000	"		14,569
(Ornamental trees & shrubs <u>a/</u> )	1960	xxx	10	307,708	Plants		138,050
	1959	xxx	45	329,855	"		125,550
(Bedding plants)	1960	3,000	xxx	2,000	Flats		3,000
	1959	xxx	3,000	2,000	Plants	1.50	3,000
(Cut green decoratives <u>a/</u> )	1960	xxx	25	60,000	Bunches	.55	33,165
	1959	xxx	34	95,200	"	.55	52,360
(Indoor decoratives <u>a/</u> )	1960	48,650	xxx	180,300	Plants		54,085
	1959	48,650	28	180,300	"		54,085
TOTAL	1960	XXX	XXX	XXX	XXXX		1,299,170
	1959	XXX	XXX	XXX	XXXX		1,830,743

a/ Includes broadleaf evergreens, coniferous evergreens, deciduous shade trees, and deciduous shrubs.

LIVESTOCK AND POULTRY: PRODUCTION AND VALUE, 1959-60

	Year	Production		Unit	Value	
		No. of head	Total liveweight		Per unit	Total
<u>Cattle and calves</u>						
(Beef)	1960	57,000	484,000	cwt.	23.00	\$ 11,132,000
	*1959	61,000	488,000	"	25.00	12,200,000
(Dairy)	1960	47,000	180,000	cwt.	10.00	1,800,000
	1959	xxx	xxx	xxx	xxx	xxx
<u>Sheep and lambs</u>						
(Revised)	1960	8,850	10,274	cwt.	16.50	169,520
	1959	10,500	12,600	"	17.40	219,200
<u>Hogs and pigs</u>						
	1960	8,400	12,600	cwt.	17.00	214,200
	1959	7,500	11,250	"	16.70	187,875
<u>Horses and mules</u>						
(Revised)	1960	3,150	xxx	Head	150.00	472,500
	1959	3,026	xxx	"	150.00	453,900
<u>Broilers and fryers</u>						
	1960	5,112,000	18,403,200	Lbs.	18.3¢	3,367,786
	1959	2,976,000	10,118,400	"	17.25¢	1,745,424
<u>Other chickens</u>						
	1960	1,604,515	7,220,318	Lbs.	9.11¢	657,771
	1959	1,000,000	4,500,000	"	7.7¢	346,500
<u>Chicks</u>						
	1960	26,136,000	xxx	Each	13.7¢	3,580,632
	1959	21,988,154	xxx	"	.14¢	3,078,342
<u>Turkeys, heavy</u>						
	1960	1,544,000	30,725,600	Lbs.	24.86¢	7,638,384
	1959	957,900	18,870,630	"	24.4¢	4,604,434
<u>Turkeys, poults</u>						
	1960	4,889,000	xxx	Each	58.0¢	2,835,620
	1959	3,717,000	xxx	"	.55¢	2,044,350
<u>Rabbits</u>						
	1960	16,000	64,000	Lbs.	.24¢	15,360
	1959	99,000	396,000	"	.25¢	99,000
<u>TOTAL</u>						
	1960	XXX	XXX	XXX	XXX	31,883,773
	1959	XXX	XXX	XXX	XXX	24,979,025

LIVESTOCK AND POULTRY PRODUCTS: PRODUCTION AND VALUE, 1959-60

	Year	Production	Unit	Per unit	Total
<u>Milk</u>					
Market	1960	3,757,094	cwt.	4.19	15,760,000
(Revised)	1959	3,716,216	"	4.24	15,774,000
Manufacturing	1960	2,959,143	cwt.	3.22	9,539,000
(Revised)	1959	2,856,702	"	3.30	9,440,000

\*No breakdown between beef and dairy

LIVESTOCK AND POULTRY: PRODUCTION AND VALUE, 1959-60

	Year	Production	Unit	Per unit	Total
<u>Eggs, chicken</u>					
(Market)	1960	34,787,250	Doz.	33.4¢	\$ 11,618,942
	1959	22,916,666	"	29.2¢	6,691,666
<u>Eggs, turkey</u>					
(Hatching)	1960	4,188,500	Each	25.7¢	1,076,445
	1959	3,489,652	"	25.3¢	882,882
TOTAL	1960	xxxx	xxxx	xxxx	37,994,387
(Revised)	1959	xxxx	xxxx	xxxx	32,788,548

JANUARY 1 INVENTORIES OF LIVESTOCK AND POULTRY, 1960-61  
(in number of head)

	January 1, 1960	January 1, 1961
<u>Cattle and calves</u>		
Milk cows 2 years and over	(Revised) 92,500	87,000
Cattle and calves on feed	(Revised) 75,500	73,600
<u>Sheep and lambs</u>	12,500	11,600
<u>Hogs and pigs</u>	7,500	8,250
<u>Horses and mules</u>	3,150	3,307
<u>Hens and pullets of laying age</u>	1,250,000	1,400,000

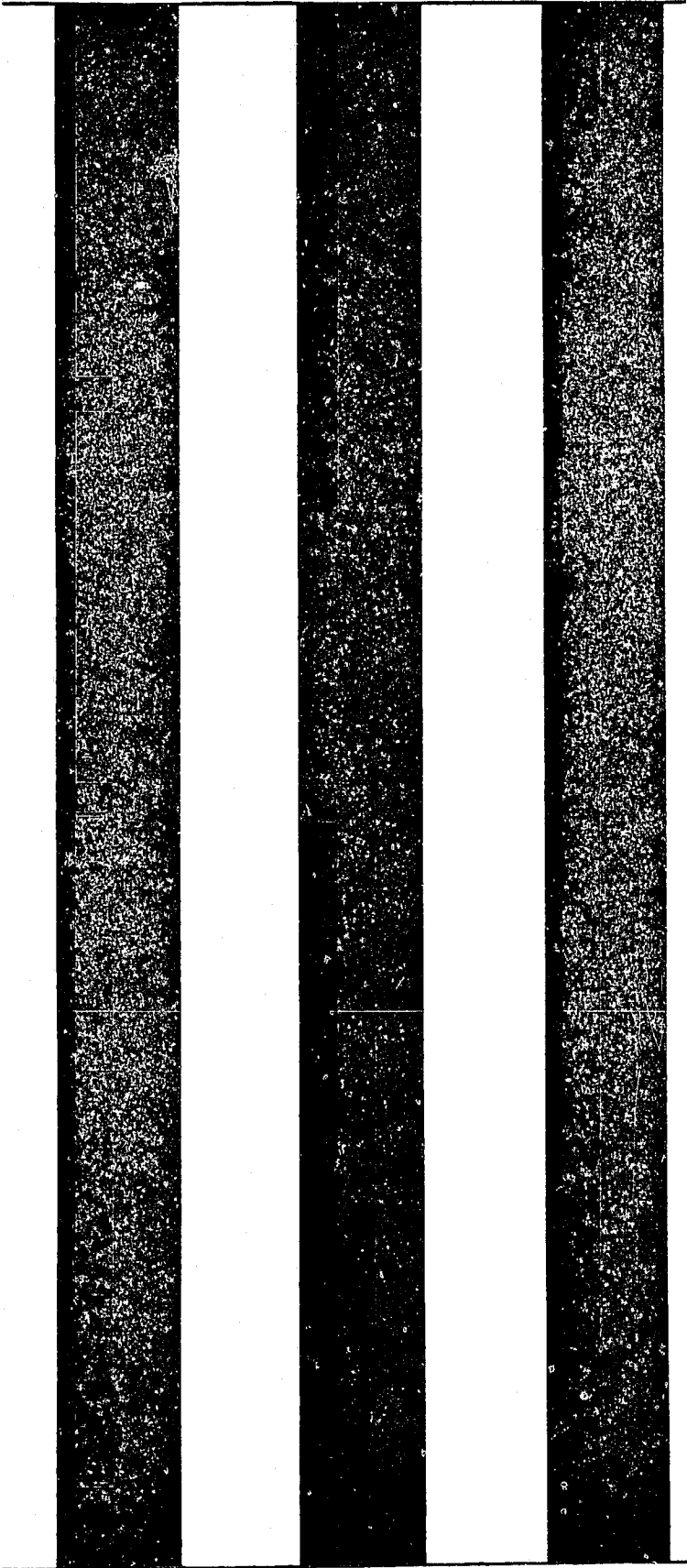
APIARY PRODUCTS: PRODUCTION AND VALUE, 1959-60

	Year	Production	Unit	Value	
		Total		Per unit	Total
<u>Honey</u>	1960	610,000	Lbs.	.12	\$ 73,200
	1959	572,400	"	.095	54,378
<u>Beeswax</u>	1960	11,666	Lbs.	.42	4,900
	1959	9,540	"	.42	4,007
<u>Package bees</u>	1960	2,735	Lbs.	.67½	1,846
	*1959	xxx	xxx	xxx	xxx
<u>Pollination</u>	1960	10,000	Colony	2.50	25,000
	1959	10,000	"	2.70	27,000
TOTAL	1960	xxx	xxx	xxx	104,946
	1959	xxx	xxx	xxx	85,385

\*Figures not available

\* S U M M A R Y \*

<u>ITEM</u>		<u>ACREAGE</u>	<u>ESTIMATED VALUE</u>
Field Crops	1960	745,100	\$ 27,173,717
	1959	754,770	26,262,499
Seed Crops	1960	6,515	1,059,161
	1959	9,050	991,250
Vegetable Crops (Revised)	1960	34,230	13,201,767
	1959	34,685	17,930,391
Fruit and Nut Crops	1960	56,866	25,027,770
	1959	57,578	25,559,596
Nursery Products	1960		1,299,170
	1959		1,830,743
Livestock and Poultry (Revised)	1960		31,883,773
	1959		24,979,025
Livestock and Poultry Products (Revised)	1960		37,994,387
	1959		32,788,548
Apiary Products	1960		104,946
	1959		85,385
		<hr/>	
	1960	842,711	137,744,691
(Revised)	1959	856,083	130,427,437

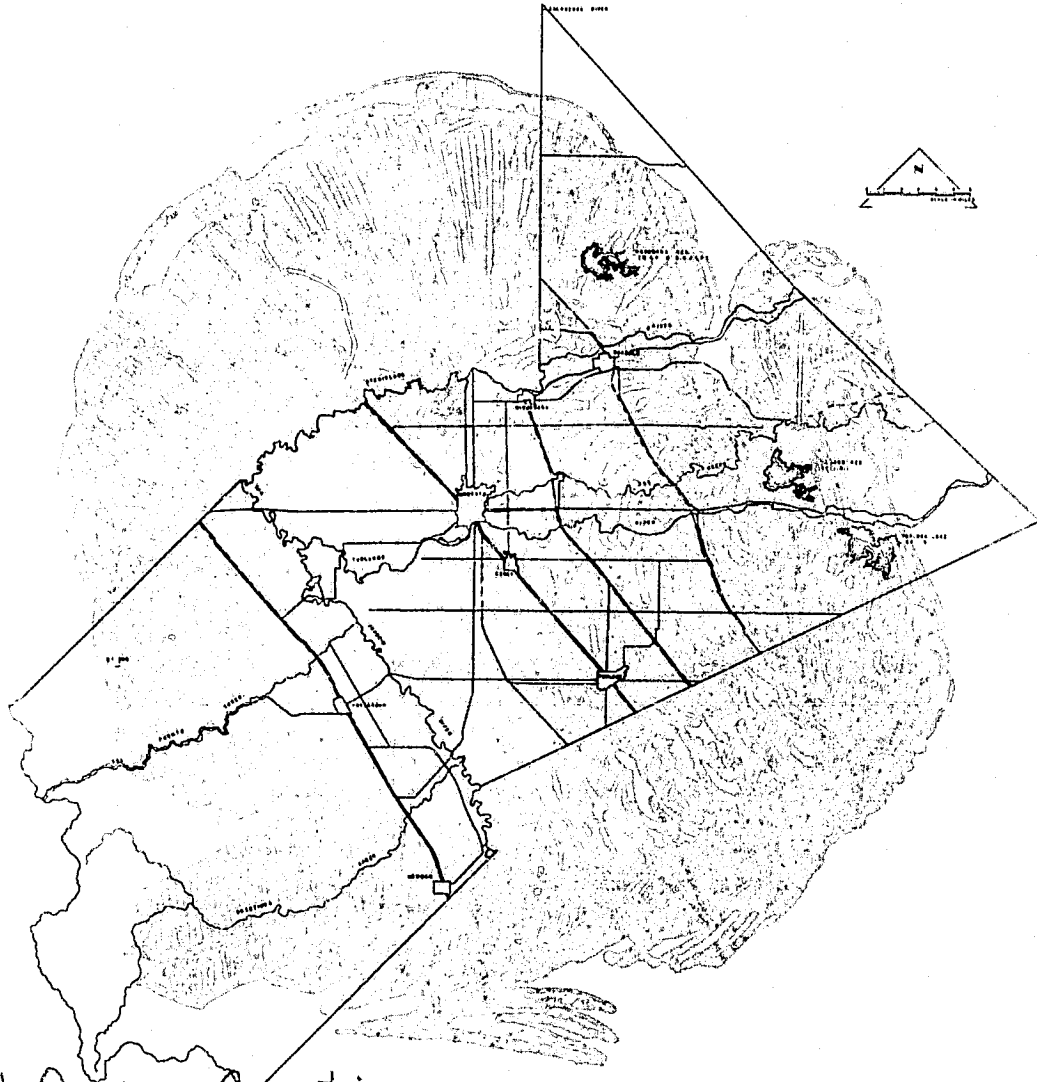


1961



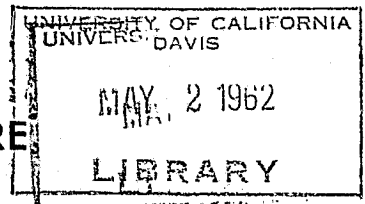
P. 3/ V.F.

# 1961 AGRICULTURAL CROP REPORT



California. Counties

STANISLAUS COUNTY  
DEPARTMENT OF AGRICULTURE  
P. O. BOX 2015, MODESTO, CALIFORNIA



STANISLAUS COUNTY  
DEPARTMENT OF AGRICULTURE

M I L O M. S C H R O C K  
AGRICULTURAL COMMISSIONER

A N N U A L C R O P R E P O R T  
FOR YEAR 1961

Compiled by  
FRANK E. HAYES  
DEPUTY AGRICULTURAL COMMISSIONER

Cover design by  
HUGH SINCLAIR  
WILLIAM RUDHMAN  
Cover make-up  
RICHARD LANG

\* \* \* \*

B O A R D O F S U P E R V I S O R S

ROBERT W. FAHEY, CHAIRMAN	DISTRICT 1
JOE DOMECCQ	DISTRICT 2
CHAS. A. BRINK	DISTRICT 3
FRANCIS RUGGIERI	DISTRICT 4
JAMES J. FRANZEN	DISTRICT 5

\* \* \* \*

C. E. D I X O N  
CHIEF ADMINISTRATIVE OFFICER

TO THE STATE DIRECTOR OF AGRICULTURE  
THE HONORABLE BOARD OF SUPERVISORS  
THE CHIEF ADMINISTRATIVE OFFICER

Gentlemen:

In accordance with the provisions of Section 65.5 of the Agricultural Code, herewith is submitted the 1961 Agricultural Crop Report for Stanislaus County.

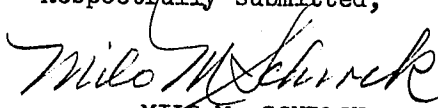
This report shows the bearing and non-bearing acreage of the permanent crops (fruits, nuts and grapes). A complete new survey has just been completed, however the new figures are not being used as they do not include the acreage pulled last fall which produced a part of the crop here reported. Also the tabulation of the figures are still incomplete at this time.

The figures used in this report represent gross income from production and not the net income to the producer. To get the net income the cost of producing and packing must be deducted.

In studying this report it will be noted that poultry and poultry products are now the leading industry in the county. Also, it will be noted Stanislaus County again produced a larger gross agricultural income in spite of three consecutive dry years.

We wish to express our appreciation for the cooperation and assistance of various agencies such as irrigation districts, cooperatives, local business concerns, producers and others who have made this report possible. Especially the members of the Agricultural Extension Service Staff and the Agricultural Commissioners Staff.

  
J. VERNON PATTERSON  
County Director of Extension

Respectfully submitted,  
  
MILLO M. SCHROCK  
County Agricultural Commissioner

## FIELD CROPS

Alfalfa - - Acreage decreased slightly due to prospects of the third dry year in a row. Prices were down slightly resulting in a small decrease in gross income. Aphids were not a serious problem, and control measures were not required until late in the season. Over-all it was a poor year with much of the hay remaining unsold.

Dry Beans - - Generally it was a good year for beans with an increase in total acreage and favorable prices, except for blackeyes. Yields were much the same except for blackeyes and small limas, which showed a small decrease.

Blackeye acreage was up about 18%, yields and prices were down, resulting in net decrease in gross revenue of about 12%.

Baby lima acreage increased about 20%, yields slightly down, but prices somewhat better resulting in an increase in gross income.

Large lima acreage increased. Production was stable, prices were slightly better and gross income was up.

Green lima production was up about 10% with better prices giving a much better gross income.

Grain - - All grain acreage was down, due in part to inadequate rainfall and prospects for another dry year. Barley yields and prices were down, gross income down. Oat yields down, prices up, and gross income down. Rice production and revenue down.

Field Corn - - Shell corn production dropped drastically the past year. Acreage decreased 50% with a small decrease in production. Gross income was down, silage acreage decreased slightly, but yields and prices remained much the same.

Cotton - - Although a small item, showed a more favorable production rate and a slight increase in gross income.

Irrigated Pasture - - Acreage increased slightly due to new areas outside the irrigation districts being brought under irrigation.

Sugar Beets - - Acreage increased from 2,850 to 4,775 acres. Yields and prices were down slightly but gross income increased almost to the million dollar mark.

Over-all field crops showed a decline in total gross income. This was probably due to prolonged drought conditions coupled with a shift in acreages on the west side to tree crops. The anticipated water shortage resulted in many acres of second crops not being planted. Two extended hot spells, June and August, were reflected in lower yields of most crops.

## SEED PRODUCTION

Alfalfa - - Certified acreage was reduced again. Yields were not significantly better. Price was a little better, but gross income was lower. Common alfalfa fared a little better. The increase was in uncertified Lahontan and Moapa hay fields which were dried up for seed production in anticipation of water shortage late in the season. Price slightly better and gross income up some.

Peas - - Some acreage increase along with slight production increase, resulted in almost doubling the yield. Prices slightly lower still gave a favorable gross income increase.

Red Clover - - Acreage and production decreased, resulting in gross income 50% lower than 1960.

## VEGETABLE CROPS

Tomatoes - - Cannery acreage up from 1960. Prices were much more favorable. A smaller acreage was planted to green shipping tomatoes. Prices were up slightly, altogether tomato income was up in spite of total acreage being lower.

Watermelons - - Watermelons again were much the same as in previous years. Acreage constant, prices a little better, yields about the same. Over-all income up slightly.

Cantaloupes - - Acreages down considerably. Yields were somewhat better, but prices were off enough to lower gross income.

Honeydews - - Acreages down slightly, yields and prices a little better. Income much the same as 1960.

Other melons - - Acreages down. Persian yields up a little. Other melons down a little. Prices on all varieties down, gross income down from last year.

Peas - - Acreages almost double those of 1960. Yields about the same. Slight increase in price resulted in almost 100% increase in gross revenue.

Spinach - - Acreages slightly lower. Yields up, prices slightly up. Total production about the same. Gross income up slightly.

Lima Beans Green - - Acreage up slightly, yields about the same with prices a little better. Gross income somewhat better. A good year for freezer beans.

Onions - - Acreage and yields were down. Prices a little better. Income down slightly over 1960.

Lettuce - - Further reduction in lettuce acreage. Prices down and yields up slightly. Spring lettuce has gone out in this area.

Peppers - - A considerable increase in bell and other pepper acreage this past year. Yields were down somewhat, but a favorable increase in price resulted in a substantial increase in gross revenue from peppers.

Cole Crops - - Cole crop production remains fairly constant, although acreages of different crops fluctuates somewhat. Prices were stable and production constant. Gross income fairly stable.

#### FRUIT AND NUT CROPS

Almonds - - Almond production was up over 1960. Although not as high as the record 1959 crop. Prices on the average were lower than 1960, but still good enough to bring the gross income significantly higher than last year.

Apricots - - Apricot production was down from last year. Yields were considerably lower, due to low production on new acreage coming into bearing. Prices were lower except on dried fruit resulting in lower gross income.

Bushberries - - Ollalie acreage and production more or less constant. Prices slightly better resulting in higher gross income.

Boysenberry acreage and production roughly the same as last year. Prices somewhat better. Gross income up slightly.

Grapes - - Grape income on the whole was much better than 1960. Raisin varieties were up in price and production except for golden bleached Thompsons. Market varieties were fairly stable. The big increase in revenue was due to increased prices paid for grapes for crushing.

Clingstone Peaches - - 1961 was a record income year for cling peaches. Total production was up and prices were very favorable resulting in a considerable increase in gross income.

Freestone Peaches - - Income from freestones was down from 1960. Yields were down some. Prices were slightly better, but over-all it was not too good a year for freestones.

Nectarines - - Nectarines showed a considerable increase in gross income. The heavy planting of newer varieties 4 or 5 years back is reflected in increased production of good quality fruit. Although prices were somewhat lower, total income was up over 100%.

Strawberries - - Strawberry acreage has gone up slightly again. Production slightly better, prices lower, over-all result a good increase in gross income.

Walnuts - - Gross income dropped off slightly. Production slightly better, but prices down enough to result in a net decrease in gross income.

Fruits and Nuts as a group accounted for a good share of the increase in over-all gross income.

## LIVESTOCK AND POULTRY

Beef Cattle - - Inventory of cattle and calves on feed on January 1, 1962 shows a slight increase over 1961. Production was up about 2%.

Swine - - Hog numbers are still showing a slight increase. Prices were up a small amount reflecting in a small increase in gross income.

Sheep - - Further reduction in numbers continues. This is due to lower prices and less returns to growers.

Horses and Mules - - Shetland Ponies have shown quite an increase resulting in higher gross income. Horse production has remained fairly steady. Mules still remain very few in number.

Dairying - - Dairy inventory is down from 1960. Both market and manufacturing milk show increases in volume. Market milk showing the largest increase. Dairying is now second to poultry in Stanislaus County.

Poultry - - The Poultry industry ranks first in income for 1961, a position held by dairy industry for many years. Although prices were somewhat lower in 1961, gross production in most items was up. Gross revenue was up.

ACREAGE ESTIMATES OF STANISLAUS COUNTY FRUIT AND NUT CROPS  
1961

by Stanislaus County Department of Agriculture  
Milo M. Schrock, Agricultural Commissioner

<u>CROP</u>	<u>BEARING ACRES</u>	<u>*NON-BEARING</u>
<u>ALMONDS</u>		
Davey - - - - -	77	458
Drake - - - - -	324	17
IXL - - - - -	178	---
Jordonola - - - - -	348	5
Mission - - - - -	1,980	393
Ne Plus Ultra - - - - -	751	116
Nonpareil - - - - -	3,057	1,475
Peerless - - - - -	51	5
Other Almonds - - - - -	41	73
TOTAL ALMONDS - - - - - 1961	6,807	2,542
1960	6,511	2,799
<u>APRICOTS</u>		
Blenheim-Royal - - - - -	182	75
Moorpark-Hemskirke - - - - -	5	---
Tilton - - - - -	2,710	1,114
Other Apricots - - - - -	1	37
TOTAL APRICOTS - - - - - 1961	2,898	1,226
1960	2,449	1,207
<u>CHERRIES</u>		
Bing - - - - -	38	24
Black Republican - - - - -	2	1
Lambert - - - - -	---	10
Royal Ann - - - - -	35	11
Tartarian - - - - -	3	2
TOTAL CHERRIES - - - - - 1961	78	48
1960	52	75
<u>CHESTNUTS</u> - - - - -		
	5	---
<u>FIGS</u>		
Black - - - - -	28	---
Calimyrna - - - - -	1	---
Kadota - - - - -	15	---
TOTAL FIGS - - - - - 1961	44	---
1960	44	---
<u>GRAPES, RAISIN</u>		
Muscat - - - - -	87	---
Thompson Seedless - - - - -	6,982	334
TOTAL RAISIN VARIETIES - 1961	7,069	334
1960	6,592	809

\*1961 Plantings were not completed in time for inclusion in the non-bearing acreage.



<u>CROP</u>		<u>BEARING ACRES</u>	<u>NON-BEARING</u>
<u>GRAPES, TABLE</u>			
Concord	- - - - -	3	---
Emperor	- - - - -	97	---
Malaga	- - - - -	349	---
Red Malaga	- - - - -	41	---
Ribier	- - - - -	48	---
Tokay	- - - - -	19	---
Other Table Grapes	- - - - -	26	---
TOTAL TABLE VARIETIES	- - - 1961	583	---
	1960	583	---
<u>GRAPES, WINE</u>			
Alicante Bouschet	- - - - -	630	3
Burger	- - - - -	33	---
Carignane	- - - - -	3,891	87
Feher Szagos	- - - - -	34	---
Franken Riesling	- - - - -	15	---
French Columbard	- - - - -	81	---
Grenache	- - - - -	1,428	402
Mission	- - - - -	576	181
Palomino-Chasselas	- - - - -	802	4
Petite Sirah	- - - - -	7	---
Salvador	- - - - -	141	---
Valdepenas	- - - - -	276	26
Zinfandel	- - - - -	270	---
Other Wine Grapes	- - - - -	111	---
TOTAL WINE VARIETIES	- - - 1961	8,295	703
	1960	7,977	1,000
<u>NECTARINES</u>			
Early Le Grand	- - - - -	8	---
Freedom	- - - - -	10	---
Gower	- - - - -	8	---
Late Le Grand	- - - - -	25	---
Le Grand	- - - - -	128	---
Quetta	- - - - -	16	---
Red Grand	- - - - -	16	---
John Rivers	- - - - -	11	1
Sun Grand	- - - - -	91	---
Other Nectarines	- - - - -	86	15
TOTAL NECTARINES	- - - 1961	399	16
	1960	348	67
<u>OLIVES</u>			
Ascolano	- - - - -	1	---
Manzanillo	- - - - -	104	---
Mission	- - - - -	164	---
Sevillano	- - - - -	2	---
Other Olives	- - - - -	1	---
TOTAL OLIVES	- - - 1961	272	---
	1960	272	---

CROPBEARING ACRESNON-BEARINGPEACHES, CLING

Andora - - - - -	502	3
Carolyn - - - - -	266	50
Corona - - - - -	519	82
Cortez - - - - -	1,938	48
Dixon - - - - -	914	942
Fortuna - - - - -	1,482	81
Gaume - - - - -	1,521	219
Giblin - - - - -	26	---
Gomes-Stuart - - - - -	1,606	57
Halford - - - - -	4,472	1,200
Howard - - - - -	37	---
Johnson - - - - -	71	---
Palora - - - - -	1,467	339
Peak - - - - -	966	34
Phillips - - - - -	38	---
Shasta - - - - -	212	29
Sims - - - - -	114	3
Sowell - - - - -	54	204
Stanford - - - - -	184	37
Starn - - - - -	435	410
Sullivan - - - - -	220	23
Vivian - - - - -	1,085	345
Williams - - - - -	36	---
Wiser - - - - -	121	162
Other Cling Peaches - - - - -	258	470
TOTAL CLING PEACHES - 1961	18,544	4,738
1960	16,060	5,571

PEACHES, FREESTONE

Elberta - - - - -	3,060	150
J. H. Hale - - - - -	119	1
Kirkman Gem - - - - -	31	5
Lovell - - - - -	161	3
Muir - - - - -	29	10
Red Haven - - - - -	12	6
Rio Oso Gem - - - - -	258	7
Other Freestone Peaches - - - - -	80	166
TOTAL FREESTONE PEACHES 1961	3,750	348
1960	3,354	752

<u>CROP</u>		<u>BEARING ACRES</u>	<u>*NON-BEARING</u>
<u>PEACHES</u> (Continued)			
	TOTAL ALL PEACHES - - -		
	1961	22,294	5,086
	1960	19,414	6,323
<u>PEARS</u>	- - - - - 1961	6	211
	1960	6	211
<u>PECANS</u>	- - - - - 1961	23	---
	1960	23	---
<u>PERSIMMONS</u>	- - - - - 1961	15	---
	1960	15	---
<u>PLUMS</u>	- - - - - 1961	29	3
	1960	29	3
<u>POMEGRANATES</u>	- - - - - 1961	9	---
	1960	9	---
<u>QUINCES</u>	- - - - - 1961	3	1
	1960	2	2
<u>WALNUTS</u>			
Blackmer	- - - - -	63	26
Concord	- - - - -	96	---
Eureka	- - - - -	3,303	900
Franquette	- - - - -	3,999	269
Hartley	- - - - -	1,935	1,435
Mayette	- - - - -	592	7
Payne	- - - - -	2,135	692
Waterloo	- - - - -	175	129
Other Walnuts	- - - - -	45	136
Seedlings	- - - - -	54	49
	TOTAL ENGLISH WALNUTS - -		
	1961	12,397	3,643
	1960	11,801	4,239

\*1961 Planting acreage not available in time for inclusion in non-bearing acreage estimate.

FIELD CROPS: ACREAGE, PRODUCTION, AND VALUE, 1960-61

Crop	Year	Harvested acres	Production		Value		
			Per acre	Total	Unit	Per unit	Total
<u>Barley</u>	1961	42,000	1.00	42,000	Ton	41.00	\$ 1,720,000
	1960	53,000	1.10	58,300	"	41.20	2,402,000
<u>Beans, dry edible</u>							
(Total)	1961	36,900	.77	28,305	Ton	197.00	5,575,000
	1960	32,900	.79	26,130	"	196.00	5,122,000
(Blackeyes)	1961	7,800	.60	4,680	Ton	130.00	608,000
	1960	6,400	.65	4,160	"	175.00	728,000
(Baby Limas)	1961	7,200	1.0	7,200	Ton	160.00	1,152,000
	1960	6,000	1.10	6,600	"	154.00	1,016,000
(Large Limas)	1961	10,900	.75	8,175	Ton	285.00	2,330,000
	1960	10,200	.75	7,650	"	270.00	2,066,000
(Other Varieties)	1961	11,000	.75	8,250	Ton	180.00	1,485,000
	1960	10,300	.75	7,720	"	170.00	1,312,000
<u>Corn</u>	1961	2,500	1.1	2,750	Ton	49.00	135,000
	1960	5,000	1.20	6,000	"	49.00	294,000
<u>Cotton Lint</u> (Revised)	1961	104	850 a/	177	Bale b/	.360 c/	31,860
	1960	100	684 a/	145	" b/	.336 c/	24,400
<u>Cottonseed</u>	1961	---	---	72	Ton	50.86	3,660
	1960	---	---	78	"	44.00	3,430
<u>Hay</u>							
(Alfalfa)	1961	63,000	7.05	444,000	Ton	22.00	9,768,000
	1960	66,000	6.60	436,000	"	23.00	10,028,000
(Grain)	1961	16,000	2.0	32,000	Ton	17.00	544,000
	1960	16,000	1.70	27,200	"	20.00	544,000
(Wild)	1961	1,000	1.50	1,500	Ton	16.00	24,000
	1960	1,000	.80	800	"	20.00	16,000
<u>Oats</u>	1961	5,000	.70	3,500	Ton	48.00	168,000
	1960	5,300	.80	4,240	"	46.00	195,000
<u>Pasture &amp; Range</u>							
(Irrigated pasture)	1961	90,000	---	---	Acre	45.00	4,050,000
	1960	86,000	---	---	"	45.00	3,870,000
(Sudan Grass)	1961	3,570	---	---	Acre	30.00	107,000
	1960	4,060	---	---	"	30.00	122,000
(Range)	1961	425,000	---	---	Acre	4.00	1,700,000
	1960	430,000	---	---	"	4.00	1,720,000

a/ Pounds  
b/ 500 lb. gross wt.  
c/ Per pound

FIELD CROPS: ACREAGE, PRODUCTION, AND VALUE, 1960-61

Crop	Year	Harvested acres	Production			Value	
			Per acre	Total	Unit	Per unit	Total
<u>Rice</u> (Revised)	1961	1,750	2.25	3,940	Ton	89.00	\$ 351,000
	1960	2,190	2.00	4,380	"	93.00	407,000
<u>Silage</u> (Corn)	1961	21,000	12.00	252,000	Ton	5.00	1,260,000
	1960	21,600	12.00	259,000	"	5.00	1,295,000
<u>Sorghum Grain</u>	1961	4,000	1.75	7,000	Ton	43.00	301,000
	1960	2,900	1.50	4,350	"	40.00	174,000
<u>Straw</u> (Grain)	1961	---	---	5,200	Ton	10.00	52,000
	1960	---	---	6,300	"	10.00	63,000
<u>Wheat</u>	1961	452	1.42	642	Ton	63.00	40,400
	1960	600	1.30	780	"	60.00	46,800
<u>Sugar Beets</u>	1961	4,775	17.4	82,900	Ton	12.00	995,000
	1960	2,850	20.50	58,400	"	12.50	730,000
<u>Misc. Field Crops</u>	1961	1,100	---	---	Acre	100.00	110,000
	1960	1,300	---	---	"	100.00	130,000
TOTAL (Revised)	1961	718,150	---	---	---	---	\$26,935,920
	1960	745,100	---	---	---	---	\$27,186,630

SEED CROPS: ACREAGE, PRODUCTION, AND VALUE, 1960-61

<u>Alfalfa</u> (Certified)	1961	1,327	550	730,000	Lbs.	.40	292,000
	1960	1,780	525	934,000	"	.365	341,000
(Common)	1961	1,810	418	756,000	Lbs.	.29	219,000
	1960	1,000	600	600,000	"	.28	168,000
<u>Peas</u>	1961	1,500	3,070	4,600,000	Lbs.	.05	230,000
	1960	1,100	2,400	2,640,000	"	.065	172,000
<u>Red Clover</u>	1961	652	375	245,000	Lbs.	.40	98,000
	1960	1,330	525	698,000	"	.28	195,000

SEED CROPS: ACREAGE, PRODUCTION, AND VALUE, 1960-61

<u>Misc. Field and Vegetable Crops</u>	1961	1,535	---	---	Acre	72.00	\$ 110,520
	1960	1,300	---	---	"	140.00	182,000
TOTAL	1961	6,824	---	---	---	---	\$ 949,520
	1960	6,515	---	---	---	---	\$1,058,000

VEGETABLE CROPS: ACREAGE, PRODUCTION, AND VALUE, 1960-61

Crop	Year	Harvested acres	Production		Value		
			Per acre	Total	Unit	Per unit	Total
<u>Beans, Green Lima</u>	1961	7,700	1.32	10,200	Ton	151.00	\$ 1,540,000
	1960	7,500	1.35	10,100	"	145.00	1,464,000
<u>Broccoli</u>	1961	108	2.5	270	Ton	140.00	37,800
	1960	200	3.00	600	"	140.00	84,000
<u>Carrots</u>	1961	325	20.0	6,500	Ton	20.00	130,000
	1960	280	18.0	5,040	"	20.00	101,000
<u>Cauliflower</u>	1961	470	4.5	2,115	Ton	130.00	275,000
	1960	400	5.00	2,000	"	130.00	260,000
<u>Corn, sweet</u>	1961	200	4.0	800	Ton	98.00	78,000
	1960	550	4.0	2,200	"	80.00	176,000
<u>Lettuce, Head</u>	1961	485	10.0	4,850	Ton	62.00	301,000
	1960	650	7.0	4,550	"	76.00	346,000
<u>Melons</u>							
(Cantaloupe)	1961	715	7.8	5,577	Ton	80.00	446,000
	1960	1,300	3.8	4,940	"	110.00	543,000
(Honeydews)	1961	2,942	7.9	23,282	Ton	75.50	1,758,000
	1960	3,900	6.5	25,400	"	70.00	1,778,000
(Persian)	1961	575	5.8	3,335	Ton	87.00	290,000
	1960	775	4.4	3,410	"	100.00	341,000
(Other Muskmelons)	1961	720	6.6	4,752	Ton	87.00	413,000
	1960	1,400	8.0	11,200	"	90.00	1,008,000
(Watermelons)	1961	1,620	12.5	20,250	Ton	22.50	455,000
	1960	1,700	12.5	21,200	"	17.50	371,000

VEGETABLE CROPS: ACREAGE, PRODUCTION, AND VALUE, 1960-61

Crop	Year	Harvested acres	Production		Unit	Value	
			Per acre	Total		Per unit	Total
<u>Onions</u>	1961	200	13.0	2,600	Ton	44.00	\$ 114,400
	1960	300	15.0	4,500	"	30.00	135,000
<u>Peas, green</u>	1961	4,480	2.09	9,360	Ton	71.80	672,000
	1960	2,500	2.1	5,250	"	71.00	373,000
<u>Peppers, Bell</u>	1961	1,150	9.5	10,900	Ton	105.00	1,144,500
	1960	850	10.7	9,100	"	79.00	719,000
<u>Pumpkins</u>	1961	380	21.4	8,140	Ton	11.00	89,500
	1960	200	12.0	2,400	"	15.00	36,000
<u>Spinach</u>	1961	1,650	8.06	13,300	Ton	23.90	318,000
	1960	1,950	7.1	13,800	"	22.50	310,000
<u>Squash</u>	1961	75	10.0	750	Ton	35.00	26,000
	1960	200	10.0	2,000	"	22.00	44,000
<u>Sweet Potatoes</u>	1961	500	3.5	1,750	Ton	150.00	263,000
	1960	511	3.3	1,690	"	160.00	270,000
<u>Tomatoes</u> (Total)	1961	7,840	15.6	122,820	Ton	41.40	5,085,000
	1960	8,100	12.5	101,500	"	46.20	4,685,000
(Fresh	1961	2,440	7.0	17,080	Ton	112.00	1,913,000
	1960	4,600	7.0	32,200	"	96.00	3,091,000
(Ripes to Cannery from fresh fields)	1961	---	3.5	8,540	Ton	30.00	256,000
	1960	---	3.5	13,300	"	23.00	306,000
(Cannery	1961	5,400	18.0	97,200	Ton	30.00	2,916,000
	1960	3,500	16.0	56,000	"	23.00	1,288,000
<u>Misc. Vegetables</u>	1961	900	---	---	Acre	150.00	135,000
	1960	900	---	---	"	150.00	135,000
TOTAL (Revised)	1961	33,035	---	---	---	---	\$13,571,600
	1960	34,230	---	---	---	---	\$13,179,000

FRUIT & NUT CROPS: ACREAGE, PRODUCTION, AND VALUE, 1960-61

Crop	Year	Production			Value		
		Bearing acres	Per acre	Total	Unit	Per unit	Total
<u>Almonds</u> (Revised)	1961	6,807	.782	5,320	Ton	460.00	\$2,447,000
	1960	6,511	.641	4,170	"	520.00	2,168,000
<u>Apricots</u> (Total)	1961	2,898	5.86	17,000	"	80.85	1,744,400
	1960	2,449	8.33	20,410	"	83.90	1,712,900
(Canned	1961	---	---	15,800	"	80.00	1,264,000
	1960	---	---	15,400	"	90.00	1,386,000
(Frozen	1961	---	---	600	"	64.00	38,400
	1960	---	---	110	"	90.00	9,900
(Juice	*1961	---	---	---	"	---	---
	1960	---	---	4,350	"	60.00	261,000
(Dried	1961	---	---	120	"	600.00	72,000
	1960	---	---	100	"	560.00	56,000
(Apricot pits	1961	---	---	600	"	40.00	24,000
	1960	---	---	625	"	42.50	26,600
<u>Bushberries</u> (Ollalie	1961	31	6.5	202	"	232.00	46,800
	1960	32	5.0	160	"	280.00	44,800
<u>Boysen &amp; Youngberries</u>	1961	644	4.3	2,770	"	320.00	886,000
	1960	617	4.4	2,710	"	280.00	759,000
<u>Cherries</u>	1961	78	2.0	156	"	260.00	40,600
	*1960	---	---	---	"	---	---
<u>Grapes</u> (Total) All	1961	15,947	7.82	124,650	"	50.19	6,256,500
	1960	15,152	7.69	116,550	"	38.40	4,473,180
(Raisin varieties (Total)	1961	7,069	7.5	53,000	"	38.68	2,050,100
	1960	6,592	7.21	47,500	"	36.20	1,720,700
(Fresh market	1961	---	---	280	"	80.00	22,400
	1960	---	---	150	"	60.00	9,000
(Dried - green Wt. Natural Thompsons	1961	---	---	600	"	47.87	28,700
	1960	---	---	400	"	60.00	24,000
(Golden bleached Thompsons Green Weight	1961	---	---	4,050	"	32.00	130,000
	1960	---	---	6,000	"	40.00	240,000

\*Figures not available



FRUIT & NUT CROPS: ACREAGE, PRODUCTION, AND VALUE, 1960-61

Crop	Year	Production			Value		
		Bearing acres	Per acre	Total	Unit	Per unit	Total
(Canned)	1961	---	---	1,000	Ton	70.00 \$	70,000
	1960	---	---	650	"	58.00	37,700
(Crushed)	1961	---	---	47,100	"	38.20	1,799,000
	1960	---	---	40,300	"	35.00	1,410,000
(Table Varieties (Total))	1961	583	9.0	5,250	"	39.70	208,400
	1960	583	9.0	5,250	"	36.30	190,480
(Fresh Market)	1961	---	---	180	"	80.00	14,400
	1960	---	---	80	"	56.00	4,480
(Crushed)	1961	---	---	5,070	"	38.20	194,000
	1960	---	---	5,170	"	36.00	186,000
(Wine Varieties (Total))	1961	8,295	8.0	66,400	"	60.21	3,998,000
	1960	7,977	8.0	63,800	"	40.20	2,562,000
(Fresh Market)	1961	---	---	2,895	"	65.00	188,000
	1960	---	---	3,200	"	43.00	138,000
(Crushed)	1961	---	---	63,500	"	60.00	3,810,000
	1960	---	---	60,600	"	40.00	2,424,000
<u>Nectarines</u>	1961	400	6.24	2,496	"	67.50	168,000
	1960	348	2.29	797	"	84.00	66,900
<u>Olives</u> (Revised)	1961	272	.84	229	"	155.00	35,500
	1960	272	.66	180	"	104.00	18,800
<u>Peaches, Clings</u>	*1961	18,546	11.4	212,000	"	67.34	14,276,000
	1960	16,060	12.4	199,000	"	57.00	11,343,000
<u>Peaches, Freestone</u>	1961	3,750	9.87	37,000	"	43.00	1,591,000
	1960	3,354	12.5	41,900	"	40.00	1,676,000
<u>Strawberries</u>	1961	350	5.68	1,988	"	269.00	535,000
	1960	270	5.3	1,430	"	278.00	398,000
<u>Walnuts</u>	1961	11,803	.43	5,075	"	480.00	2,436,000
	1960	11,801	.421	4,970	"	510.00	2,535,000
<u>Misc. Fruit &amp; Nuts</u>	1961	156	---	---	Acre	300.00	47,000
	*1960	---	---	---	"	---	---
TOTAL (Revised)	1961	61,682	---	---	---	---	30,163,800
	1960	56,866	---	---	---	---	25,222,180

\*Includes pickles.

†Not available.

NURSERY PRODUCTS: PRODUCTION AREA, SALES, AND VALUE 1960-61

Item	Year	Production area		Quantity sold by Producers	Unit	Value		
		House sq. ft.	Field acres			Per unit	Total	
<b><u>Nursery Crops</u></b>								
(Deciduous fruit & nut trees)	1961	---	105	1,240,000	Plants	.387	\$ 480,000	
	1960	---	45	590,000	"	.559	330,000	
(Grapevines)	1961	---	12	281,000	Plants	.056	15,800	
	1960	---	10	239,000	"	.062	14,800	
(Rose plants)	1961	---	25	254,000	Plants	.382	97,000	
	1960	---	131	1,940,000	"	.340	660,000	
(Small fruit plants)	1961	---	15	4,000,000	Plants	.014	56,000	
	1960	---	30	5,000,000	"	.0096	48,000	
(Vegetable plants)	1961	---	15	4,016,000	Plants	.0065	26,100	
	1960	---	12	3,873,000	"	.0046	17,700	
(Ornamental trees & shrubs <u>a/</u> )	1961	---	15	326,000	Plants	.402	131,000	
	1960	---	10	308,000	"	.448	138,000	
(Bedding plants)	1961	3,000	---	2,000	Flats	1.35	2,700	
	1960	3,000	---	2,000	"	1.50	3,000	
(Cut Green decoratives)	1961	---	10	40,000	Bunches	.55	22,000	
	1960	---	25	60,000	"	.55	33,200	
(Indoor decoratives)	1961	43,560	---	113,000	Plants	.588	66,500	
	1960	48,650	---	180,000	"	.301	54,100	
TOTAL	1961	---	---	---	---	---	\$ 897,100	
	1960	---	---	---	---	---	\$ 1,298,800	

a/ Includes broadleaf evergreens, coniferous evergreens, deciduous shade trees, and deciduous shrubs.

LIVESTOCK AND POULTRY: PRODUCTION AND VALUE, 1960-61

	Year	Production		Unit	Value	
		No. of head	Total liveweight		Per unit	Total
<u>Cattle and calves</u>						
(Beef)	1961	58,140	494,000	cwt.	23.00	\$ 11,362,000
	1960	57,000	484,000	"	23.00	11,132,000
(Dairy)	1961	47,000	180,000	cwt.	10.00	1,800,000
	1960	47,000	180,000	"	10.00	1,800,000
<u>Sheep and lambs</u>						
	1961	8,300	9,545	cwt.	15.00	143,000
	1960	8,850	10,300	"	16.50	170,000
<u>Hogs and pigs</u>						
	1961	8,650	12,975	cwt.	17.25	224,000
	1960	8,400	12,600	"	17.00	214,000
<u>Horses and mules</u>						
(Revised)	1961	1,200	---	Head	250.00	300,000
	1960	3,150	---	"	150.00	472,000
<u>Broilers and fryers</u>						
	1961	5,952,000	21,784,000	Lbs.	.151	3,289,000
	1960	5,112,000	18,403,000	"	.183	3,368,000
<u>Other chickens</u>						
	1961	1,700,000	7,650,000	Lbs.	.069	528,000
	1960	1,605,000	7,220,000	"	.091	658,000
<u>Chicks</u>						
	1961	27,421,000	---	Each	.135	3,702,000
	1960	26,136,000	---	"	.137	3,581,000
<u>Turkeys, heavy</u>						
	1961	1,576,000	30,732,000	Lbs.	.183	5,623,000
	1960	1,544,000	30,726,000	"	.249	7,651,000
<u>Turkeys, poults</u>						
	1961	4,844,000	---	Each	.569	2,756,000
	1960	4,889,000	---	"	.58	2,836,000
<u>Rabbits</u>						
	1961	20,000	90,000	Lbs.	.228	20,520
	1960	16,000	64,000	"	.24	15,400
<hr/>						
TOTAL	1961	---	---	---	---	\$ 29,747,520
(Revised)	1960	---	---	---	---	\$ 31,897,400

LIVESTOCK AND POULTRY PRODUCTS: PRODUCTION AND VALUE, 1960-61

	Year	Production	Unit	Per unit	Total
<u>Milk</u>					
Market	1961	3,917,000	cwt.	4.17	\$ 16,334,000
(Revised)	1960	3,766,000	"	4.21	15,855,000
<u>Manufacturing</u>					
(Revised)	1961	3,038,000	cwt.	3.36	10,208,000
	1960	2,967,000	"	3.22	9,554,000

LIVESTOCK AND POULTRY PRODUCTS: PRODUCTION AND VALUE, 1960-61

	Year	Production	Unit	Per unit	Total
<u>Eggs, chicken</u>					
(Market)	1961	38,266,000	Doz.	.306	\$ 11,709,000
	1960	34,787,000	"	.334	11,619,000
<u>Eggs, turkey</u>					
(Hatching)	1961	5,770,000	Each	.26	1,500,000
	1960	4,188,000	"	.257	1,076,000
TOTAL	1961	---	---	---	\$ 39,751,000
(Revised)	1960	---	---	---	\$ 38,104,000

JANUARY 1 INVENTORIES OF LIVESTOCK AND POULTRY, 1961-62  
(in number of head)

	January 1, 1961	January 1, 1962
<u>Cattle and calves</u>		
Milk cows 2 years and over	87,000	85,000
Cattle and calves on feed	73,600	75,100
<u>Sheep and lambs</u>	11,600	11,000
<u>Hogs and pigs</u>	8,250	8,500
<u>Hens and pullets of laying age</u> (Revised)	1,932,000	2,125,200
<u>Turkey Breeding hens</u>	* ---	115,400

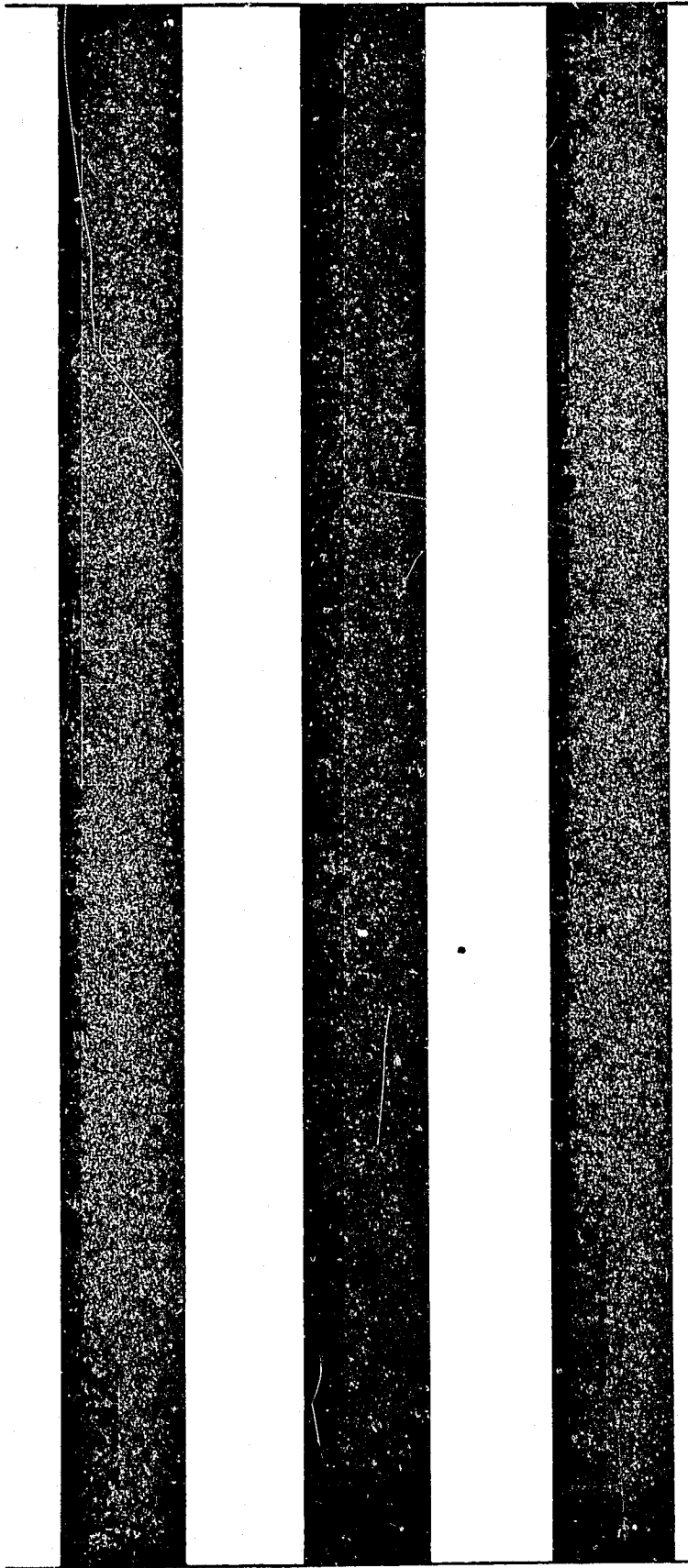
\* Not available.

APIARY PRODUCTS: PRODUCTION AND VALUE, 1960-61

	Year	Production		Value	
		Total	Unit	Per unit	Total
<u>Honey</u>	1961	666,000	Lbs.	.13	\$ 86,600
	1960	610,000	"	.12	73,200
<u>Beeswax</u>	1961	6,600	Lbs.	.43	2,800
	1960	11,700	"	.42	4,910
<u>Package Bees</u>	1961	608	Lbs.	1.00	600
	1960	2,740	"	.675	1,850
<u>Pollination</u>	1961	10,000	Colony	2.50	25,000
	1960	10,000	"	2.50	25,000
TOTAL	1961	---	---	---	115,000
	1960	---	---	---	104,960

\* S U M M A R Y \*

<u>ITEM</u>		<u>ACREAGE</u>	<u>ESTIMATED VALUE</u>
Field Crops	1961	718,150	\$ 26,935,920
	(Revised) 1960	745,100	27,186,630
Seed Crops	1961	6,824	949,520
	1960	6,515	1,058,000
Vegetable Crops	1961	33,035	13,571,600
	(Revised) 1960	34,230	13,179,000
Fruit & Nut Crops	1961	61,682	30,163,800
	(Revised) 1960	56,866	25,222,180
Nursery Products	1961	---	897,100
	1960	---	1,298,800
Livestock and Poultry	1961	---	29,747,520
	(Revised) 1960	---	31,897,400
Livestock and Poultry Products	1961	---	39,751,000
	(Revised) 1960	---	38,104,000
Apiary Products	1961	---	115,000
	1960	---	104,960
	1961	819,691	\$ 142,131,460
	(Revised) 1960	842,711	\$ 138,050,970



1962

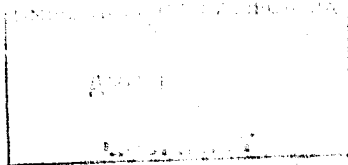
Ref. No.

*Calif. Institute*

1962

STANISLAUS

COUNTY



AGRICULTURAL

CROP

REPORT

DEPARTMENT OF AGRICULTURE  
P. O. BOX 2015, MODESTO, CALIFORNIA

STANISLAUS COUNTY  
DEPARTMENT OF AGRICULTURE

M I L O M. S C H R O C K  
AGRICULTURAL COMMISSIONER

A N N U A L C R O P R E P O R T  
FOR YEAR 1962

Compiled by  
FRANK E. HAYES  
DEPUTY AGRICULTURAL COMMISSIONER

\* \* \* \*

Cover make-up  
RICHARD LANG

\* \* \* \*

B O A R D O F S U P E R V I S O R S

JAMES J. FRANZEN, CHAIRMAN	DISTRICT 5
JOE DOMECC	DISTRICT 2
CHAS. A. BRINK	DISTRICT 3
FRANCIS RUGGIERI	DISTRICT 4
ROBERT W. FAHEY	DISTRICT 1

\* \* \* \*

C. E. D I X O N  
CHIEF ADMINISTRATIVE OFFICER



TO THE STATE DIRECTOR OF AGRICULTURE  
THE HONORABLE BOARD OF SUPERVISORS  
THE CHIEF ADMINISTRATIVE OFFICER

Gentlemen:

In compliance with the requirements of Section 65.5 of the Agricultural Code, we herewith submit the 1962 Agriculture Crop Report for Stanislaus County.

In this report are the bearing and nonbearing acreages of all of our permanent crops. These acreage figures are the results of the completely new survey which was made during 1961. The figures presented include new plantings and pullouts as of January 1, 1963.

We would like to state, the figures used in this report represent gross income from production and not the net income to the producer. To get the net income, the cost of producing and packing must be deducted.

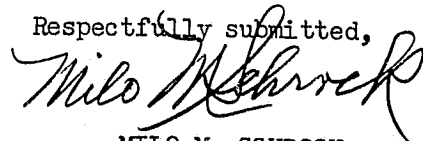
It will be noted in this report the largest single item is for market milk, which had a gross income value of \$17,700,000. We have made every attempt to make this report as accurate as possible.

We wish to express our appreciation for the cooperation and assistance of various agencies such as irrigation districts, cooperatives, local business concerns, producers and others who have made this report possible. Especially the members of the Agricultural Extension Service Staff and the Agricultural Commissioners Staff.



VERNON PATTERSON  
County Director of Extension

Respectfully submitted,



MILO M. SCHROCK  
County Agricultural Commissioner

## FIELD CROPS

Alfalfa - - Acreage declined again a small amount. Yields and prices were both somewhat better resulting in a larger gross income. Aphids posed no real problem and at the end of the season hay prices were on the upgrade.

Dry Beans - - All beans were down in gross income. Blackeyes were down the most in acreage but were slightly better price wise. Limas were up slightly in acreage but down in price. Other beans were much the same in yield and acreage but down enough in price to result in a lower income.

Grain - - Wheat and oats were down in acreage. Yield and prices are fluctuating. Other grains up in acreage. Milo and rice were up considerably in acreage. Prices were somewhat better. Overall gross was about the same.

Field Corn - - Shell corn at lowest production in years. Prices were better, but gross income down. Silage corn continues to increase in income. Acreage remains fairly steady but yields and prices a little better.

Cotton - - A small item but production somewhat better. Acreage decreased slightly as well as gross income.

Irrigated Pasture - - A small decrease in acreage due to shift of land to other use.

Sugar Beets - - Acreage decreased almost 25%. Yields and prices were a little better resulting in only a slight loss in gross income.

Field crops generally showed a small decline in gross income. Again this was due to anticipated drouth and shift to other crops. With prospects of a normal or near normal water supply, production may be more favorable in 1963.

## SEED PRODUCTION

Alfalfa - - Certified acreage made a small gain in acreage. Production nearly the same as in 1961. Prices were somewhat better resulting in a small increase in gross income. Common alfalfa including uncertified varieties decreased in acreage. Prices were up a little with overall gross income up some.

Peas - - Pea acreage about the same. Yields were down. Prices stable resulting in a considerable decrease in gross income.

Red Clover - - Acreage decreased again, yields were down some and prices a little better. Overall gross income down some.

Miscellaneous - - Cucurbit seeds enjoyed a good year resulting in a larger gross income.

## VEGETABLE CROPS

As a whole vegetable crops had a lower gross income. Acreages were up but prices were down enough to result in overall decrease in gross income.

Tomatoes - - Cannery acreage continues to show an increase. Green shipping acreage continues to decline. Price and production of greens both increased, raising income from shipping. A sizeable increase in cannery acreage offset a lower price resulting in a higher gross income. Overall, the tomato income shows a favorable increase over 1961.

Watermelons - - Watermelon income showed a slight decline due to lower yields and much smaller acreage planted. Prices were favorable as a result. Gross income down overall.

Cantaloupes - - Gross income down slightly over 1961 due to lower prices and yields, although a considerable increase in acreage was seen.

Honeydews - - Acreage stable, yields slightly better but prices were sufficiently lower to result in a lower gross income.

Other melons - - Persians were up in gross income. Acreage and yields up. Prices lower but a gain in gross income. Other melons declined in acreage and price sufficiently to offset slightly better yields.

Peas - - Acreage and yield down slightly coupled with a lower price resulting in a lower gross income.

Spinach - - Lower acreage and a small price decline offset a slightly better yield resulting in a lower gross income.

Lima Beans Green - - Acreage and yields declined slightly. A small increase in price wasn't enough to offset this decline. Gross income slightly lower.

Onions - - A slight increase in acreage plus much better yields gave a considerable increase in gross income. Prices stable.

Lettuce - - Head lettuce acreage continues to decrease. Yields fairly constant but prices somewhat better. Gross income slightly lower.

Peppers - - Peppers showed a considerable decline in gross income. Acreage fell off nearly 50%. Yields were slightly better but prices were much lower. Gross income down nearly 50%.

Cole Crops - - Acreages and yield fairly stable. Prices nearly constant. Gross income much the same as in 1961.

## FRUIT AND NUT CROPS

At first glance there seems to be a drop in acreage in all tree crops except for walnuts. This is due to more accurate acreage figures. The quadrennial survey of permanent plantings was completed too late for inclusion in the 1961 crop report. The figures available included some pullouts since the last survey which were not accounted for. The 1962 figures should be taken as the correct figures. Fruits and nuts accounted for a large share of the increase in gross revenue.

Almonds - - Production and prices are both up resulting in a gross income increase for 1962.

Apricots - - 1962 was a good year for apricots. Production and prices were both up giving a substantial increase in gross income.

Bushberries - - Ollalie showed a slight increase in gross income. Acreage wise they were up, price wise down.

Boysenberry - - Boysenberry and youngberries were fairly stable as to acreage and yield. Prices were down some resulting in a decrease in gross income.

Grapes - - Acreage and production fairly constant. A slight decrease in price resulted in a small decrease in gross income.

Clingstone Peaches - - Gross income was down slightly. This was due primarily to a slight decrease in prices. Production and acreage remained about the same.

Freestone Peaches - - Income about the same as 1961. The decrease in acreage was not as large as indicated. Yields and prices were up slightly.

Nectarines - - Yields and prices a little more favorable. Acreage down, but again this is not the true picture. Income much the same overall.

Strawberries - - Acreage down around 50%. Yield and prices down slightly. Income somewhat reduced.

Walnuts - - Acreage and yields up. Price somewhat less, but overall a considerable increase in gross income. A good walnut year. Quality down somewhat due to husk fly injury.

Pears - - Pears will become a significant source of income in 1963. A considerable acreage will come into bearing. In 1962, 100 tons of pears were marketed to the cannery. These are included in Miscellaneous for 1962.

## LIVESTOCK AND POULTRY

Beef Cattle - - The industry continues to show a steady increase. Inventory up slightly. Prices and production both favorable.

Swine - - A slight increase each year, with stable prices resulting in a small increase in gross income.

Sheep - - Sheep numbers continue to decrease. Prices were considerably better in 1962 resulting in an increase in gross income.

Horses and Mules - - Horse numbers, including ponies, show a small steady increase. Prices are a little more favorable resulting in a small increase in gross income.

Dairying - - Milk cow inventory continues to decrease slightly. This is due to Grade B producers going out of production. Market milk continues on the increase. This is the largest single item of income for the year 1962.

Poultry - - As a whole, poultry income was up slightly from 1961. Eggs continue on the increase. Slaughter birds were slightly down in income.

1962 PERMANENT CROP ACREAGES - COMPLETED RESURVEY

<u>CROP</u>		<u>BEARING ACRES</u>	<u>NON-BEARING</u>	<u>TOTAL</u>
<u>ALMONDS</u>				
Davey	-----	198	321	
Drake	-----	279	24	
IXL	-----	177	2	
Jordonola	-----	323	11	
Merced	-----	1	479	
Mission	-----	1848	669	
Ne Plus Ultra	-----	638	329	
Nonpareil	-----	3291	2597	
Peerless	-----	45	29	
Other Almonds	-----	14	34	
TOTAL ALMONDS	1962	6,814	4,495	11,309
	*1961	6,346	4,541	10,887
<u>APRICOTS</u>				
Blenheim-Royal	-----	222	110	
Moorpark-Hemskirke	-----	4	---	
Tilton	-----	3162	2022	
Other	-----	1	---	
TOTAL APRICOTS	1962	3,389	2,132	5,521
	*1961	2,831	2,514	5,345
<u>CHERRIES</u>				
Bing	-----	48	76	
Black Republican	-----	1	---	
Black Tartarian	-----	3	3	
Lambert	-----	4	7	
Royal Ann	-----	28	30	
Van	-----	---	8	
Other	-----	---	1	
TOTAL CHERRIES	1962	84	125	209
	*1961	66	123	189
<u>FIGS</u>				
Black	-----	32	---	
Kadota	-----	17	---	
TOTAL FIGS	1962	49	---	49
<u>GRAPES, RAISIN</u>				
Muscat	-----	72	19	
Thompson Seedless	-----	7756	844	
TOTAL RAISIN VARIETIES	1962	7,828	863	8,691
	*1961	7,085	1,621	8,706

\*Revised

<u>CROP</u>	<u>BEARING ACRES</u>	<u>NON-BEARING</u>	<u>TOTAL</u>
<u>GRAPES, TABLE</u>			
Emperor - - - - -	50	---	
Malaga - - - - -	299	---	
Red Malaga - - - - -	27	---	
Ribier - - - - -	47	---	
Rose de Peru - - - - -	6	---	
Tokay - - - - -	7	---	
Other - - - - -	80	---	
TOTAL TABLE GRAPES 1962	<u>516</u>	---	<u>516</u>
*1961	479	37	516

<u>GRAPES, WINE</u>			
Alicante Bouschet - - - - -	484	2	
Burger - - - - -	33	---	
Carignane - - - - -	3854	321	
Columbard - - - - -	---	29	
Feher Szagos - - - - -	34	---	
Franken Riesling - - - - -	8	---	
French Columbard - - - - -	100	19	
Golden Chasselas - - - - -	169	---	
Grand Noir - - - - -	10	---	
Grenache - - - - -	2117	340	
Malvoisies - - - - -	49	---	
Mission - - - - -	768	175	
Palomino - - - - -	713	16	
Salvador - - - - -	140	---	
Semillon - - - - -	8	---	
Valdepenas - - - - -	302	34	
Zinfandel - - - - -	270	5	
Other - - - - -	87	55	
TOTAL WINE GRAPES 1962	<u>9,146</u>	<u>996</u>	<u>10,142</u>
*1961	8,345	1,577	9,922
TOTAL ALL GRAPES 1962	17,490	1,859	19,349
*1961	15,909	3,235	19,144

<u>NECTARINES</u>			
Freedom - - - - -	2	---	
Le Grand - - - - -	39	7	
Early Le Grand - - - - -	20	---	
Late Le Grand - - - - -	24	3	
Quetto - - - - -	2	---	
Red Grand - - - - -	25	1	
Sun Grand - - - - -	33	2	
Early Sun Grand - - - - -	41	---	
Other - - - - -	65	50	
TOTAL NECTARINES 1962	<u>251</u>	<u>63</u>	<u>314</u>
*1961	232	94	326

\* Revised

<u>CROP</u>		<u>BEARING ACRES</u>	<u>NON-BEARING</u>	<u>TOTAL</u>
<u>OLIVES</u>				
Ascolano	- - - - -	1	13	
Manzanillo	- - - - -	89	---	
Mission	- - - - -	145	---	
Serillano	- - - - -	1	---	
TOTAL OLIVES	1962	<u>236</u>	<u>13</u>	<u>249</u>
	*1961	242	13	255

<u>PEACHES, CLING</u>				
Andora	- - - - -	468	17	
Carolyn	- - - - -	266	118	
Carona	- - - - -	509	108	
Cortez	- - - - -	1908	27	
Dixon	- - - - -	1165	969	
Fortuna	- - - - -	1396	45	
Gaume	- - - - -	1593	296	
Giblin	- - - - -	17	---	
Gomes-Stuart	- - - - -	1574	90	
Halford	- - - - -	4493	1263	
Howard	- - - - -	36	4	
Johnson	- - - - -	44	---	
Libbee	- - - - -	5	---	
Loadel	- - - - -	---	89	
Palora	- - - - -	1247	338	
Peak	- - - - -	834	82	
Phillips	- - - - -	25	---	
Shasta	- - - - -	198	36	
Sims	- - - - -	90	---	
Sowell	- - - - -	62	74	
Stanford	- - - - -	188	23	
Starn	- - - - -	492	508	
Sullivan	- - - - -	181	37	
Vivian	- - - - -	1179	86	
Walton	- - - - -	3	---	
Williams	- - - - -	22	---	
Wiser	- - - - -	141	276	
Other	- - - - -	336	438	
TOTAL CLING PEACHES	1962	<u>18,472</u>	<u>4,924</u>	<u>23,396</u>
	*1961	17,945	5,679	23,624

<u>PEACHES, FREESTONE</u>				
Early Elberta	- - - - -	16	1	
Elberta	- - - - -	2770	384	
J. H. Hale	- - - - -	46	---	
Lovell	- - - - -	101	---	
Muir	- - - - -	25	2	
Red Globe	- - - - -	8	2	
Red Haven	- - - - -	8	---	
Rio Oso Gem	- - - - -	156	39	
Other	- - - - -	77	12	
TOTAL FREESTONE PEACHES	1962	<u>3,207</u>	<u>440</u>	<u>3,647</u>
	*1961	3,116	648	3,764



<u>CROP</u>		<u>BEARING ACRES</u>	<u>NON-BEARING</u>	<u>TOTAL</u>
TOTAL ALL PEACHES	1962	21,679	5,364	27,043
	1961	21,061	6,327	27,388
<u>PEARS</u>				
	Bartlett - - - - -	20	477	
	Winter Nelis - - - - -	-----	6	
	Other - - - - -	-----	20	
TOTAL PEARS	1962	<u>20</u>	<u>503</u>	<u>523</u>
	*1961	2	320	322
<u>PECANS</u>	- - - - - 1962	15	---	15
<u>PERSIMMONS</u>	- - - - - 1962	12	---	12
<u>PLUMS</u>	- - - - - 1962	42	11	53
	*1961	36	13	49
<u>POMEGRANATES</u>	- - - - - 1962	8	---	8
<u>PRUNES</u>	- - - - - 1962	1	40	41
	*1961	1	---	1
<u>WALNUTS</u>				
	Blackmer - - - - -	55	16	
	Concord - - - - -	72	---	
	Eureka - - - - -	3311	1306	
	Franquette - - - - -	3949	323	
	Hartley - - - - -	2268	2785	
	Mayette - - - - -	505	3	
	Nugget - - - - -	-----	206	
	Payne - - - - -	2259	922	
	Waterloo - - - - -	175	139	
	Other - - - - -	41	111	
	Seedling - - - - -	12	63	
TOTAL WALNUTS	1962	<u>12,617</u>	<u>5,874</u>	<u>18,521</u>
	*1961	12,166	5,998	18,164

\* Revised

FIELD CROPS: ACREAGE, PRODUCTION, AND VALUE, 1961-62

Crop	Year	Harvested acres	Production			Value	
			Per acre	Total	Unit	Per unit	Total
<u>Barley</u>	1962	42,500	.80	34,000	Ton	43.00	\$1,530,000
	1961	42,000	1.00	42,000	"	41.00	1,720,000
<u>Beans, dry edible</u>							
(Total)							
	1962	35,400	.78	27,680	Ton	173.01	4,789,000
	1961	36,900	.77	28,305	"	197.00	5,575,000
(Blackeyes)							
	1962	6,100	.60	3,660	Ton	150.00	549,000
	1961	7,800	.60	4,680	"	130.00	608,000
(Baby Limas)							
	1962	7,300	1.0	7,300	Ton	140.00	1,022,000
	1961	7,200	1.0	7,200	"	160.00	1,152,000
(Large Limas)							
	1962	11,000	.76	8,360	Ton	220.00	1,839,000
	1961	10,900	.75	8,175	"	285.00	2,330,000
(Other Varieties)							
	1962	11,000	.76	8,360	Ton	165.00	1,379,000
	1961	11,000	.75	8,250	"	180.00	1,485,000
<u>Corn</u>							
	1962	2,000	1.1	2,200	Ton	50.00	110,000
	1961	2,500	1.1	2,750	"	49.00	135,000
<u>Cotton Lint</u>							
	1962	89	890 a/	158 Bale	b/	.355 c/	28,100
	1961	104	850 a/	177 "	b/	.360 c/	31,900
<u>Cottonseed</u>							
	1962			60	Ton	51.00	3,060
	1961			72	"	50.86	3,660
<u>Hay</u>							
(Alfalfa)							
	1962	60,000	7.10	426,000	Ton	23.50	10,011,000
	1961	63,000	7.05	444,000	"	22.00	9,768,000
(Grain)							
	1962	14,000	2.0	28,000	Ton	20.00	560,000
	1961	16,000	2.0	32,000	"	17.00	544,000
(Wild)							
	1962	1,000	1.50	1,500	Ton	17.00	25,500
	1961	1,000	1.50	1,500	"	16.00	24,000
<u>Oats</u>							
	1962	4,000	1.0	4,000	Ton	45.00	180,000
	1961	5,000	.70	3,500	"	48.00	168,000
<u>Pasture &amp; Range</u>							
(Irrigated pasture)							
	1962	88,000			Acre	45.00	3,960,000
	1961	90,000			"	45.00	4,050,000
(Sudan Grass)							
	1962	3,900			Acre	30.00	117,000
	1961	3,570			"	30.00	107,000
(Range)							
	1962	424,000			Acre	4.00	1,696,000
	1961	425,000			"	4.00	1,700,000

a/ Pounds  
b/ 500 lb. gross wt.  
c/ Per pound

FIELD CROPS: ACREAGE, PRODUCTION, AND VALUE, 1961-62

Crop	Year	Harvested acres	Production		Unit	Value	
			Per acre	Total		Per unit	Total
<u>Rice</u>	1962	2,123	2.4	5,095	Ton	95.00 \$	484,000
	1961	1,750	2.25	3,940	"	89.00	351,000
<u>Silage</u> (Corn)	1962	21,000	12.5	263,000	Ton	5.50	1,447,000
	1961	21,000	12.00	252,000	"	5.00	1,260,000
<u>Sorghum Grain</u>	1962	5,000	1.80	9,000	Ton	43.00	387,000
	1961	4,000	1.75	7,000	"	43.00	301,000
<u>Straw</u> (Grain)	1962	---	---	4,000	Ton	10.00	40,000
	1961	---	---	5,200	"	10.00	52,000
<u>Wheat</u>	1962	150	1.42	213	Ton	71.40	15,000
	1961	452	1.42	642	"	63.00	40,400
<u>Sugar Beets</u>	1962	3,420	20.75	70,965	Ton	13.00	923,000
	1961	4,775	17.4	82,900	"	12.00	995,000
<u>Misc. Field Crops</u>	1962	1,000	---	---	Acre	95.00	95,000
	1961	1,100	---	---	"	100.00	110,000
TOTAL	1962	707,582	---	---	---	---	26,400,660
	(Revised) 1961	718,150	---	---	---	---	26,935,960

SEED CROPS: ACREAGE, PRODUCTION, AND VALUE, 1961-62

<u>Alfalfa</u> (Certified)	1962	1,389	560	777,800 Lbs.	.45	350,000
	1961	1,327	550	730,000 "	.40	292,000
(Common)	1962	1,735	400	694,000 Lbs.	.32	222,000
	1961	1,810	418	756,000 "	.29	219,000
<u>Peas</u>	1962	1,500	2,200	3,300,000 Lbs.	.05	165,000
	1961	1,500	3,070	4,600,000 "	.05	230,000
<u>Red Clover</u>	1962	430	370	159,000 Lbs.	.46	73,000
	1961	652	375	245,000 "	.40	98,000

SEED CROPS: ACREAGE, PRODUCTION, AND VALUE, 1961-62

<u>Misc. Field and Vegetable Crops</u>	1962	2,875	---	---	Acre	75.00	\$ 216,000
	1961	1,535	---	---	"	72.00	110,520
TOTAL	1962	7,929	---	---	---	---	1,026,000
	1961	6,824	---	---	---	---	949,520

VEGETABLE CROPS: ACREAGE, PRODUCTION, AND VALUE, 1961-62

Crop	Year	Harvested acres	Production			Value	
			Per acres	Total	Unit	Per unit	Total
<u>Beans, Green Lima</u>	1962	6,880	1.28	8,810	Ton	152.00	\$1,339,000
	1961	7,700	1.32	10,200	"	151.00	1,540,000
<u>Broccoli</u>	1962	69	2.25	155	Ton	140.00	21,700
	1961	108	2.5	270	"	140.00	37,800
<u>Carrots</u>	1962	387	20.0	7,740	Ton	20.00	155,000
	1961	325	20.0	6,500	"	20.00	130,000
<u>Cauliflower</u>	1962	604	3.8	2,295	Ton	130.00	298,000
	1961	470	4.5	2,115	"	130.00	275,000
<u>Corn, sweet</u>	1962	50	4.0	200	Ton	75.00	15,000
	1961	200	4.0	800	"	98.00	78,000
<u>Lettuce, Head</u>	1962	426	10.0	4,260	Ton	70.00	298,000
	1961	485	10.0	4,850	"	62.00	301,000
<u>Melons</u>							
(Cantaloupe)	1962	1,320	5.9	7,788	Ton	53.00	413,000
	1961	715	7.8	5,577	"	80.00	446,000
(Honeydews)	1962	2,969	8.0	23,752	Ton	60.00	1,425,000
	1961	2,942	7.9	23,282	"	75.50	1,758,000
(Persian)	1962	695	6.0	4,170	Ton	82.50	344,000
	1961	575	5.8	3,335	"	87.00	290,000
(Other Muskmelons)	1962	686	6.8	4,665	Ton	80.00	373,000
	1961	720	6.6	4,752	"	87.00	413,000
(Watermelons)	1962	925	12.0	11,100	Ton	27.50	305,000
	1961	1,620	12.5	20,250	"	22.50	455,000

VEGETABLE CROPS: ACREAGE, PRODUCTION, AND VALUE, 1961-62

Crop	Year	Harvested acres	Production			Value	
			Per acre	Total	Unit	Per unit	Total
<u>Onions</u>	1962	203	20.0	4,060	Ton	44.00	\$ 178,000
	1961	200	13.0	2,600	"	44.00	114,000
<u>Peas, green</u>	1962	4,120	1.75	7,210	Ton	68.00	490,000
	1961	4,480	2.09	9,360	"	71.80	672,000
<u>Peppers, Bell</u>	1962	638	12.0	7,656	Ton	83.00	635,000
	1961	1,150	9.5	10,900	"	105.00	1,145,000
<u>Pumpkins</u>	1962	390	20.5	7,990	Ton	9.20	73,600
	1961	380	21.4	8,140	"	11.00	89,500
<u>Spinach</u>	1962	1,310	9.08	11,900	Ton	23.40	278,000
	1961	1,650	8.06	13,300	"	23.90	318,000
<u>Squash</u>	1962	57	10.0	570	Ton	20.00	11,400
	1961	75	10.0	750	"	35.00	26,000
<u>Sweet Potatoes</u>	1962	644	2.0	1,288	Ton	140.00	180,000
	1961	500	3.5	1,750	"	150.00	263,000
<u>Tomatoes</u> (Total)	1962	8,135	16.5	134,200	Ton	40.95	5,495,000
	1961	7,840	15.6	122,820	"	41.40	5,085,000
(Fresh	1962	2,000	7.2	14,400	Ton	152.77	2,200,000
	1961	2,440	7.0	17,080	"	112.00	1,913,000
(Ripes to Cannery from fresh fields)	1962	---	4.9	9,800	Ton	27.50	270,000
	1961	---	3.5	8,540	"	30.00	256,000
(Cannery	1962	6,135	18.0	110,000	Ton	27.50	3,025,000
	1961	5,400	18.0	97,200	"	30.00	2,916,000
<u>Misc. Vegetables</u>	1962	800	---	---	Acre	175.00	140,000
	1961	900	---	---	"	150.00	135,000
TOTAL	1962	31,308	---	---	---	---	\$12,467,700
	(Revised) 1961	33,035	---	---	---	---	\$13,571,300

FRUIT & NUT CROPS: ACREAGE, PRODUCTION, AND VALUE, 1961-62

Crop	Year	Bearing acres	Production		Value		
			Per acre	Total	Unit	Per unit	Total
<u>Almonds</u>	1962	6,346	.885	5,620	Ton	550.00	\$3,091,000
	1961	6,807	.782	5,320	"	460.00	2,447,000
<u>Apricots</u> (Total)	1962	2,831	7.9	22,468	Ton	110.20	2,476,000
	1961	2,898	5.86	17,000	"	80.85	1,374,000
(Canned)	1962	---	---	17,900	Ton	113.00	2,025,000
	1961	---	---	15,800	"	80.00	1,264,000
(Frozen)	1962	---	---	500	Ton	128.00	64,000
	1961	---	---	600	"	64.00	38,400
(Juice)	1962	---	---	3,300	Ton	90.00	297,000
	*1961	---	---	---		---	---
(Dried)	1962	---	---	96	Ton	940.00	90,200
	1961	---	---	120	"	600.00	72,000
<u>Bushberries</u> (Total)	1962	700	5.07	3,552	Ton	226.43	804,000
	1961	675	4.40	2,972	"	313.86	933,000
(Ollalie)	1962	52	6.0	312	Ton	190.00	59,300
	1961	31	6.5	202	"	232.00	46,800
<u>Boysen &amp; Youngberries</u>	1962	648	5.0	3,240	Ton	230.00	745,000
	1961	644	4.3	2,770	"	320.00	886,000
<u>Cherries</u>	1962	66	1.5	99	Ton	240.00	23,760
	1961	78	2.0	156	"	260.00	40,600
<u>Grapes</u> (Total all)	1962	15,909	7.81	124,208	Ton	47.41	5,887,700
	(Revised) 1961	15,947	7.82	124,650	"	50.19	6,257,000
(Raisin Varieties (Total))	1962	7,085	7.5	53,137	Ton	45.03	2,392,700
	1961	7,069	7.5	53,000	"	38.68	2,050,000
(Fresh Market)	*1962	---	---	---		---	---
	1961	---	---	280	Ton	80.00	22,400
(Dried-green Wt. (Natural Thompsons)	1962	---	---	600	Ton	50.50	30,300
	1961	---	---	600	"	47.87	28,700
(Golden bleached (Thompsons (Green Weight)	1962	---	---	5,200	Ton	41.92	218,000
	1961	---	---	4,050	"	32.00	130,000

\* Figures not available

## FRUIT &amp; NUT CROPS: ACREAGE, PRODUCTION, AND VALUE, 1961-62

Crop	Year	Bearing acres	Production		Value		
			Per acre	Total	Unit	Per unit	Total
(Canned)	1962	---	---	1,175	Ton	65.00 \$	76,400
	1961	---	---	1,000	"	70.00	70,000
(Crushed)	1962	---	---	46,162	Ton	44.80	2,068,000
	1961	---	---	47,100	"	38.20	1,799,000
(Table Varieties (Revised)(Total))	1962	479	9.0	4,311	Ton	43.70	188,000
	1961	583	9.0	5,250	"	39.70	208,000
(Fresh Market)	1962	---	---	---	---	---	---
	1961	---	---	180	Ton	80.00	14,400
(Crushed)	1962	---	---	4,311	Ton	43.70	188,000
	1961	---	---	5,070	"	38.20	194,000
(Wine Varieties (Total))	1962	8,345	8.0	66,760	Ton	49.54	3,307,000
	1961	8,295	8.0	66,400	"	60.21	3,998,000
(Fresh Market (1))	1962	---	---	5,563	Ton	50.00	278,000
	1961	---	---	2,895	"	65.00	188,000
(Crushed (2))	1962	---	---	61,197	Ton	49.50	3,029,000
	1961	---	---	63,500	"	60.00	3,810,000
<u>Nectarines</u>	1962	232	6.50	1,508	Ton	71.08	107,000
	1961	400	6.24	2,496	"	67.50	168,000
<u>Olives</u>	1962	242	.83	202	Ton	204.00	41,200
	1961	272	.84	229	"	155.00	35,500
<u>Peaches, Clings*</u>	1962	18,299	11.5	211,000	Ton	63.93	13,490,000
	1961	18,546	11.4	212,000	"	67.34	14,276,000
<u>Peaches, Freestone</u>	1962	3,116	10.3	32,100	Ton	44.00	1,412,000
	1961	3,750	9.87	37,000	"	43.00	1,591,000
<u>Strawberries</u>	1962	172	5.00	860	Ton	240.00	206,000
	1961	350	5.68	1,988	"	269.00	535,000
<u>Walnuts</u>	1962	12,166	.70	8,516	Ton	460.00	3,917,000
	1961	11,803	.43	5,075	"	480.00	2,436,000
Misc. Fruit & Nuts +	1962	122	---	---	Ac.	325.00	39,700
	1961	156	---	---	"	300.00	47,000
TOTAL (Revised)	1962	60,201	---	---	--	---	31,495,360
	1961	61,682	---	---	--	---	30,140,100

\* Cling Peach Association Estimate

+ Includes Figs, Pomegranates, Persimmons, Pecans, Pears and Plums

(1) On the vine price

(2) Delivered to winery

NURSERY PRODUCTS: PRODUCTION AREA, SALES, AND VALUE 1961-62

Item	Year	Production area		Quantity sold by Producers	Unit	Value		
		House sq. ft.	Field acres			Per unit	Total	
<u>Nursery Crops</u>								
(Deciduous fruit & nut trees)	1962	---	87.5	907,476	Plants	.636	\$ 577,000	
	1961	---	105.0	1,240,000	"	.387	480,000	
(Grapevines)	1962	---	50	446,244	Plants	.065	29,000	
	1961	---	12	281,000	"	.056	15,800	
(Rose Plants)	1962	---	198.5	2,975,000	Plants	.265	78,800	
	1961	---	25.0	254,000	"	.382	97,000	
(Small fruit plants)	1962	---	15	5,500,000	Plants	.014	77,000	
	1961	---	15	4,000,000	"	.014	56,000	
(Vegetable plants)	1962	---	15	2,615,000	Plants	.006	15,700	
	1961	---	15	4,016,000	"	.0065	26,100	
(Ornamental trees & shrubs <u>a/</u> )	1962	---	37	326,352	Plants	.405	132,000	
	1961	---	15	326,000	"	.402	131,000	
(Bedding plants)	1962	3,000	---	2,000	Flats	1.50	3,000	
	1961	3,000	---	2,000	"	1.35	2,700	
(Cut Green decoratives)	1962	---	24	44,000	Bunches	.55	24,200	
	1961	---	10	40,000	"	.55	22,000	
(Indoor decoratives)	1962	64,200	---	129,000	Plants	1.05	136,000	
	1961	43,560	---	113,000	"	.588	66,500	
(Misc. Nursery stock)	1962	---	1	43,560	Sq.Ft.	.05	2,180	
	1961	---	---	---	---	---	---	
TOTAL	1962	---	---	---	---	---	\$1,074,880	
	1961	---	---	---	---	---	897,100	

a/ Includes broadleaf evergreens, coniferous evergreens, deciduous shade trees, and deciduous shrubs.



LIVESTOCK AND POULTRY: PRODUCTION AND VALUE, 1961-62

	Year	Production		Unit	Value	
		No. of head	Total liveweight		Per unit	Total
<u>Cattle and calves</u>	1962	60,200	511,700	cwt.	24.00	12,281,000
(Beef)	1961	58,140	494,000	"	23.00	11,362,000
(Dairy)	1962	60,000	260,000	cwt.	13.00	3,380,000
	1961	47,000	180,000	"	10.00	1,800,000
<u>Sheep and lambs</u>	1962	7,800	8,970	cwt.	20.00	179,000
	1961	8,300	9,545	"	15.00	143,000
<u>Hogs and pigs</u>	1962	8,700	13,050	cwt.	17.25	225,000
	1961	8,650	12,975	"	17.25	224,000
<u>Horses and mules</u>	1962	1,300	---	Head	275.00	358,000
	1961	1,200	---	"	250.00	300,000
<u>Broilers and fryers</u>	1962	5,104,000	18,885,000	Lbs.	.162	3,059,000
	1961	5,952,000	21,784,000	"	.151	3,289,000
<u>Other chickens</u>	1962	1,865,000	8,393,000	Lbs.	.08	671,000
	1961	1,700,000	7,650,000	"	.069	528,000
<u>Chicks</u>	1962	27,475,000	---	each	.137	3,764,000
	1961	27,421,000	---	"	.135	3,702,000
<u>Turkeys, heavy</u>	1962	1,560,000	30,675,000	Lbs.	.207	6,329,000
	1961	1,576,000	30,732,000	"	.183	5,623,000
<u>Turkeys, poults</u>	1962	4,989,000	---	each	.556	2,774,000
	1961	4,844,000	---	"	.569	2,756,000
<u>Rabbits</u>	1962	20,000	90,000	Lbs.	.228	20,500
	1961	20,000	90,000	"	.228	20,500
TOTAL	1962	---	---	---	---	\$33,040,500
(Revised)	1961	---	---	---	---	29,747,500

LIVESTOCK AND POULTRY PRODUCTS: PRODUCTION AND VALUE, 1961-62

	Year	Production	Unit	Per unit	Total
<u>Milk</u>	1962	4,232,000	cwt.	4.19	17,732,000
Market (Revised)	1961	3,897,000	"	4.21	16,406,000
Manufacturing	1962	3,119,000	cwt.	3.21	10,012,000
(Revised)	1961	3,030,000	"	3.32	10,060,000

LIVESTOCK AND POULTRY PRODUCTS: PRODUCTION AND VALUE, 1961-62

	Year	Production	Unit	Per unit	Total
<u>Eggs, chicken</u> (Market)	1962	43,739,000	Doz.	.2775	\$ 12,138,000
	1961	38,266,000	"	.306	11,709,000
<u>Eggs, turkey</u> (Hatching)	1962	5,359,000	each	.23	1,233,000
	1961	5,770,000	"	.26	1,500,000
TOTAL (Revised)	1962	---	---	---	\$ 41,115,000
	1961	---	---	---	39,675,000

JANUARY 1 INVENTORIES OF LIVESTOCK AND POULTRY, 1962-63  
(in number of head)

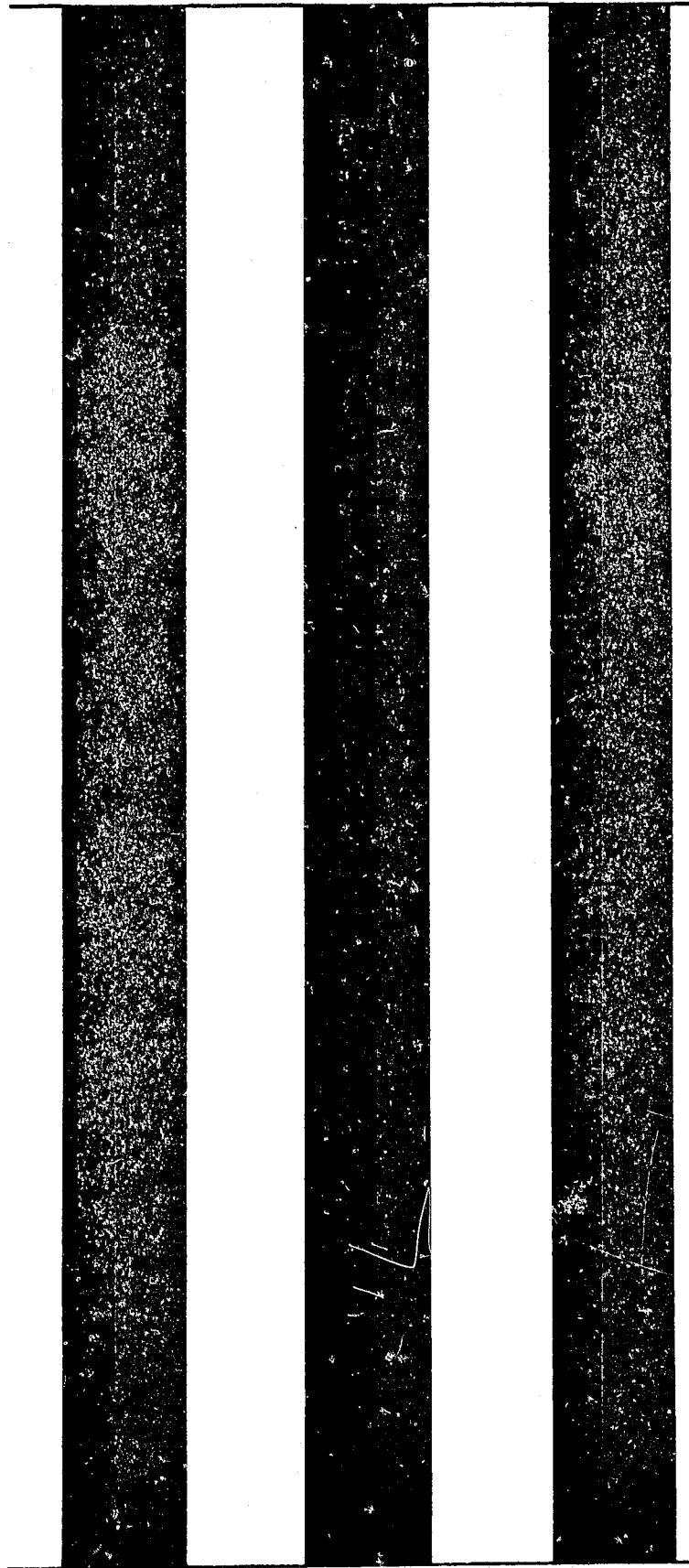
	January 1, 1962	January 1, 1963
<u>Cattle and calves</u>		
(Milk cows 2 years and over)	85,000	80,000
(Cattle and calves on feed)	75,100	77,100
<u>Sheep and lambs</u>	11,000	10,400
<u>Hogs and pigs</u>	8,500	8,500
<u>Hens and pullets of laying age</u>	2,125,000	2,338,000
<u>Turkey Breeding hens</u>	115,000	74,000

APIARY PRODUCTS: PRODUCTION AND VALUE, 1961-62

	Year	Production		Value	
		Total	Unit	Per unit	Total
<u>Honey</u>	1962	806,000	Lbs.	.133	\$ 107,000
	1961	666,000	"	.130	86,600
<u>Beeswax</u>	1962	15,000	Lbs.	.436	6,540
	1961	6,600	"	.430	2,800
<u>Package Bees</u>	1962	3,000	Lbs.	.560	1,680
	1961	608	"	1.00	600
<u>Pollination</u>	1962	10,000	Colony	2.00	20,000
	1961	10,000	"	2.50	25,000
TOTAL	1962	---	---	---	\$ 135,220
	1961	---	---	---	115,000

\* S U M M A R Y \*

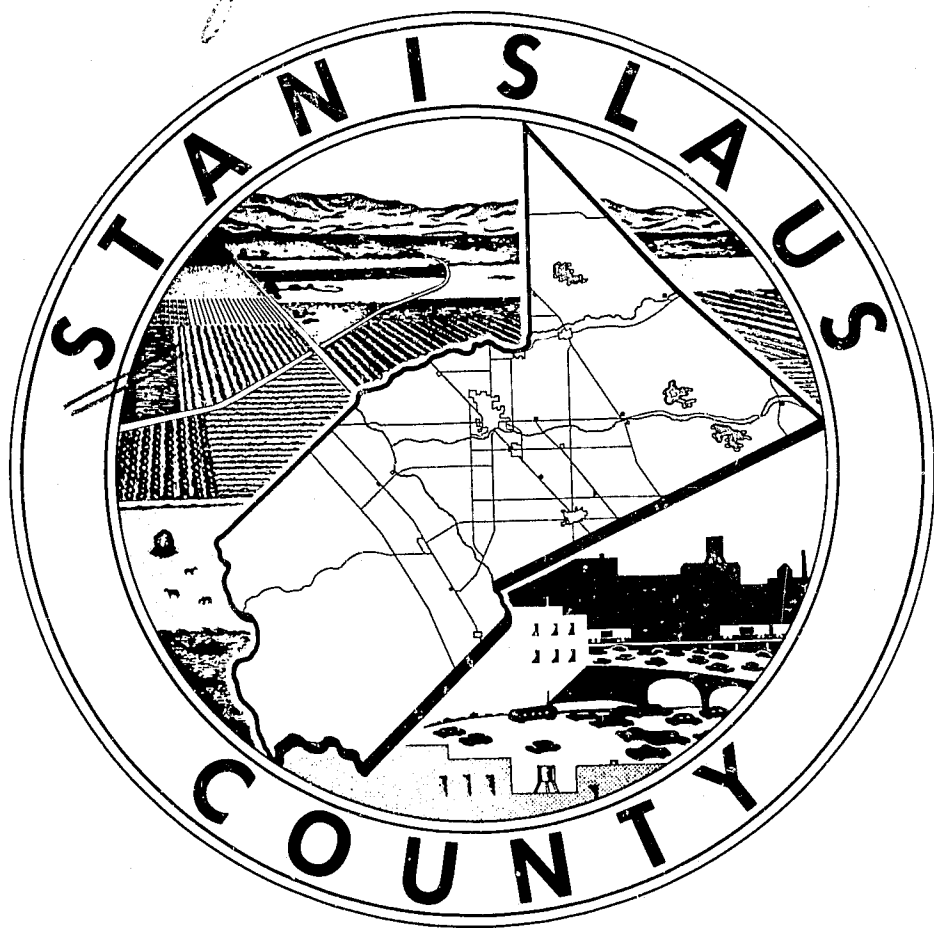
<u>ITEM</u>		<u>ACREAGE</u>	<u>ESTIMATED VALUE</u>
Field Crops	1962	707,150	26,400,660
	1961	718,150	26,935,960
Seed Crops	1962	7,929	1,026,000
	1961	6,824	949,520
Vegetable Crops	1962	31,308	12,467,700
	1961	33,035	13,571,300
Fruit & Nut Crops (Revised)	1962	60,201	31,495,360
	1961	61,682	30,140,100
Nursery Products	1962	---	1,074,880
	1961	---	897,100
Livestock and Poultry	1962	---	33,040,500
	1961	---	29,747,500
Livestock & Poultry Products (Revised)	1962	---	41,115,000
	1961	---	39,675,000
Apiary Products	1962	---	135,220
	1961	---	115,000
Total (Revised)	1962	806,588	146,755,320
	1961	819,691	142,031,480



1963

1962 V.F.

*Calif. Counties*



UNIVERSITY OF CALIFORNIA  
 DAVIS  
 APR 10 1964  
 LIBRARY

**1963**

*Annual*

# **AGRICULTURAL CROP REPORT**

DEPARTMENT OF AGRICULTURE  
 P. O. BOX 2015 - MODESTO, CALIFORNIA

STANISLAUS COUNTY  
DEPARTMENT OF AGRICULTURE

M I L O M . S C H R O C K  
AGRICULTURAL COMMISSIONER

A N N U A L C R O P R E P O R T  
FOR YEAR 1963

Compiled by  
FRANK E. HAYES  
DEPUTY AGRICULTURAL COMMISSIONER

\* \* \* \*

Cover make-up  
RICHARD LANG

\* \* \* \*

B O A R D O F S U P E R V I S O R S

JAMES J. FRANZEN	DISTRICT 5
JOE DOMEQ, CHAIRMAN	DISTRICT 2
CHAS. A. BRINK	DISTRICT 3
FRANCIS RUGGIERI, VICE CHAIRMAN	DISTRICT 4
ROBERT W. FAHEY	DISTRICT 1

\* \* \* \*

C. E. D I X O N  
CHIEF ADMINISTRATIVE OFFICER

TO THE STATE DIRECTOR OF AGRICULTURE  
THE HONORABLE BOARD OF SUPERVISORS  
THE CHIEF ADMINISTRATIVE OFFICER

Gentlemen:

We are pleased to present the 1963 Agricultural Crop Report as required by Section 65.5 of the Agricultural Code.

Again this year the report shows the acreages of bearing and non-bearing permanent crops. These include a tabulation of all new plantings and pullouts to January 1, 1964.

The values shown represent gross value of production and do not represent net income received by the farmers.

It will be noted this report shows the largest total value of crops and livestock ever reported in the history of Stanislaus County.

We wish to express appreciation for the cooperation and assistance of all individuals who contributed to this report and especially to the members of the Agricultural Extension Staff and the Agricultural Commissioners Staff.

Respectfully submitted,



VERNON PATTERSON  
Stanislaus County  
Director of Extension



MILO M. SCHROCK  
Stanislaus County  
Agricultural Commissioner

## FIELD CROPS

Alfalfa - - The 1963 season showed another slight decrease in acreage. Yields averaged slightly less but prices were considerably better, resulting in a considerable increase in gross income. There was no real pest control problems encountered for the year and the alfalfa picture looks much brighter.

Dry Beans - - Total acreage declined slightly but over-all gross revenue was up. This was due primarily to increased acreage and prices for blackeyes. Small limas increased in acreage and yield giving an increase in gross income. Large limas declined in acreage, yields up slightly, price was the same. Gross income was down. Other beans (presumably freezer type green limas) decreased in acreage, although yields were better and prices slightly better, resulting in a decrease in gross income.

Grain - - Barley, rice and milo were down slightly in acreage. Wheat gained in acreage. Oats the same. Yields and prices fluctuating. Over-all gross income up.

Field Corn - - Shell corn acreage up 20%. Yield and price both better resulting in increase in gross income. Silage corn acreage stable. Prices slightly better, yields much the same. Over-all gross income was up.

Cotton - - Nearly a 50% reduction in acreage, coupled with a drop in yield, resulted in a considerable drop in gross income in spite of prices being better.

Irrigated pasture - - Decline in acreage continues. Rent stable.

Sugar Beets - - A better than 20% acreage increase, coupled with a better yield, resulted in a considerable gain in gross income in spite of a small decrease in prices.

Field crops over-all showed a sizeable increase in gross income in spite of a small drop in acreage. This acreage drop is due to shift of production to other crops such as orchards on westside. Generally prices and yields were more favorable in 1963.

## SEED PRODUCTION

Alfalfa - - Certified alfalfa acreage nearly doubled in 1963. Production was better but prices were a little lower. Gross income from certified and non-certified varieties were up.

Peas - - Pea acreage declined some. Yield up slightly. Gross income down slightly.

Red Clover - - Acreage slightly higher. Yields up considerably. Prices somewhat lower, resulting in a 100% increase in gross income.

Miscellaneous - - Acreage down. Income per acre more favorable, but total gross income down.



## VEGETABLE CROPS

Vegetable crops accounted for a small increase in total gross income. Acreage declined slightly but most prices were better.

Tomatoes - - Cannery acreage increased again. Yields were better but prices slightly lower. Total cannery income up from 1962. Green tomato acreage decreased. Prices were lower resulting in a decrease in fresh market income. Over-all tomatoes were down slightly in gross income.

Watermelons - - Acreage up, yields and prices down. Gross income down slightly.

Cantaloupes - - Acreage down, yield and prices more favorable. Gross income was lower than 1962.

Honeydews - - Acreage down slightly, yields and prices slightly higher resulting in a small increase in gross returns.

Other melons - - Persian acreage decreased, yields lower, price slightly better. Gross returns down 30%. Other melons were down slightly in acreage. Yields and prices were a little better resulting in a slight increase in gross income.

Peas - - Acreage and yield nearly constant. Prices a little better resulting in a slight increase in gross returns.

Spinach - - Acreage and yields down. Prices stable resulting in a slight decrease in gross income.

Lima Beans Green - - Acreage decreased about 1/3 from 1962. Yields slightly better but prices down. Over-all gross income lower.

Onions - - Acreage decreased 25%. Yields the same but prices were lower. Gross income down.

Lettuce - - Head lettuce acreage up about 50%. Yields stable, price a little lower but gross income up significantly.

Peppers - - Acreage about double 1962. Yields were better but prices lower because of shift of acreage from shipping to dehydrating usage. Over-all income up about 1/3.

Cole Crops - - Acreages up. Yields more favorable. Prices were more or less stable resulting in a substantial increase in gross returns.

## FRUIT AND NUT CROPS

All tree fruits except olives show a large increase in acreage. This is due to new acreages reaching the bearing age. Apricots, almonds and walnut plantings continue heavy on the westside. This results in a drop in field crop and vegetable crop acreages from this area. Berry acreages continue to decrease. Fruits and nuts account for a considerable portion of the increase of total gross income for the year 1963.

Almonds - - Acreage and yield both increases. Prices were down some but total gross income was up.

Apricots - - Acreage and yield were up. Prices down. Gross income was still up due to increase in total production.

Bushberries - - Ollalie and blackberry acreage almost nil. Yields down, prices up. Gross income down. Boysenberries down in yield and acreage. Prices somewhat better, but gross income down.

Grapes - - Total revenue declined. The grape marketing order termination plus increase in yields forced prices down.

Clingstone Peaches - - In spite of predictions of a poor crop, cling peaches did well in 1963. Yields and prices were somewhat better. A considerable increase in gross income.

Freestone Peaches - - Yields and prices both better. Gross income up.

Nectarines - - Fairly stable. Prices were a little better resulting in an increase in gross returns.

Strawberries - - Acreage again declined. Yields lower but prices a little better. Gross income down some.

Walnuts - - Acreage and yields up. Prices down. Some orchards had a lot of small nuts but over-all an increase in gross returns.

Pears - - Practically no crop for 1963. No fruit was set. Income very small. Included in miscellaneous for 1963.

## LIVESTOCK AND POULTRY

Beef Cattle - - The industry continues to grow slowly but prices in 1963 were a little lower. Gross income fell slightly.

Swine - - Numbers stable in 1963. Prices a little less favorable. Gross income down.

Sheep - - Slight decrease in numbers in 1963. Prices a little lower. Gross income lower. Wool prices picked up for first time in 1963.

Horses and Mules - - The size of horse herds shows a steady increase. Prices stable. Gross income up slightly.

Dairying - - Milk cow inventory continues to decline. Market milk continues to increase but manufacturing milk decreases. Prices stable. Milk is still the number one income producer for a single item.

Poultry and Poultry Products - - Poultry income continues to increase. Turkey income was down slightly but chickens were up. Eggs continue their upward trend. Part of the increase in egg income is due to inclusion of hatching eggs for the first time in 1963.

1963 PERMANENT CROP ACREAGES - COMPLETED RESURVEY

<u>CROP</u>		<u>BEARING ACRES</u>	<u>NON-BEARING</u>	<u>TOTAL</u>
<u>ALMONDS</u>				
Davey	- - - - -	393	128	
Drake	- - - - -	273	24	
IXL	- - - - -	158	2	
Jordonola	- - - - -	323	11	
Merced	- - - - -	1	716	
Mission	- - - - -	1948	641	
Ne Plus Ultra	- - - - -	662	323	
Nonpareil	- - - - -	3846	2596	
Peerless	- - - - -	45	29	
Other Almonds	- - - - -	18	54	
TOTAL ALMONDS	1963	<u>7,667</u>	<u>4,521</u>	<u>12,191</u>
	1962	6,814	4,495	11,309
<u>APRICOTS</u>				
Blenheim-Royal	- - - - -	247	80	
Moorpark-Hemskirke	- - - - -	4	---	
Tilton	- - - - -	3681	1902	
Other	- - - - -	---	4	
TOTAL APRICOTS	1963	<u>3,932</u>	<u>1,986</u>	<u>5,918</u>
	1962	3,389	2,132	5,521
<u>CHERRIES</u>				
Bing	- - - - -	50	64	
Black Republican	- - - - -	1	---	
Black Tartarian	- - - - -	3	3	
Lambert	- - - - -	4	7	
Royal Ann	- - - - -	28	30	
Van	- - - - -	---	10	
Other	- - - - -	---	3	
TOTAL CHERRIES	1963	<u>86</u>	<u>117</u>	<u>203</u>
	1962	84	125	209
<u>FIGS</u>				
Black	- - - - -	32	---	
Kadota	- - - - -	12	---	
TOTAL FIGS	1963	<u>44</u>	<u>---</u>	<u>44</u>
	1962	49	---	49
<u>GRAPES, RAISIN</u>				
Muscat	- - - - -	86	5	
Thompson Seedless	- - - - -	8312	236	
TOTAL RAISIN VARIETIES	1963	<u>8,398</u>	<u>241</u>	<u>8,639</u>
	1962	7,828	863	8,691

<u>CROP</u>	<u>BEARING ACRES</u>	<u>NON-BEARING</u>	<u>TOTAL</u>
<u>GRAPES, TABLE</u>			
Emperor - - - - -	50	---	
Malaga - - - - -	282	---	
Ribier - - - - -	47	---	
Rose de Peru - - - - -	6	---	
Tokay - - - - -	7	---	
Other - - - - -	80	---	
TOTAL TABLE GRAPES 1963	<u>472</u>	<u>---</u>	<u>472</u>
1962	516		516

<u>GRAPES, WINE</u>			
Alicante Bouschet - - - - -	454	2	
Burger - - - - -	33	---	
Carignane - - - - -	3884	318	
Columbard - - - - -	---	32	
Feher Szagos - - - - -	34	---	
Franken Riesling - - - - -	8	---	
French Columbard - - - - -	119	27	
Golden Chasselas - - - - -	169	---	
Grand Noir - - - - -	10	---	
Grenache - - - - -	2373	128	
Malvoisie - - - - -	49	---	
Mission - - - - -	890	55	
Palomino - - - - -	713	20	
Royalty - - - - -	3	193	
Rubired - - - - -	---	20	
Salvador - - - - -	140	---	
Semillon - - - - -	8	---	
Valdepenas - - - - -	317	67	
Zinfandel - - - - -	270	5	
Other - - - - -	87	91	
TOTAL WINE GRAPES 1963	<u>9,561</u>	<u>958</u>	<u>10,519</u>
1962	9,146	996	10,142
TOTAL ALL GRAPES 1963	18,431	1,199	19,630
1962	17,490	1,859	19,349

<u>NECTARINES</u>			
Freedom - - - - -	2	---	
Le Grand - - - - -	40	6	
Early Le Grand - - - - -	20	---	
Late Le Grand - - - - -	27	---	
Quetto - - - - -	2	---	
Red Grand - - - - -	26	---	
Sun Grand - - - - -	33	5	
Early Sun Grand - - - - -	41	---	
Other - - - - -	80	35	
TOTAL NECTARINES 1963	<u>271</u>	<u>46</u>	<u>317</u>
1962	251	63	314

<u>CROP</u>		<u>BEARING ACRES</u>	<u>NON-BEARING</u>	<u>TOTAL</u>
<u>OLIVES</u>				
Ascolano	- - - - -	1	13	
Manzanillo	- - - - -	89	---	
Mission	- - - - -	144	---	
Sevillano	- - - - -	1	---	
TOTAL OLIVES	1963	<u>235</u>	<u>13</u>	<u>248</u>
	1962	236	13	249

<u>PEACHES, CLING</u>				
Andora	- - - - -	412	3	
Carolyn	- - - - -	271	217	
Carson	- - - - -	132	177	
Corona	- - - - -	528	177	
Cortez	- - - - -	1818	11	
Dixon	- - - - -	1565	746	
Fortuna	- - - - -	1367	13	
Gaume	- - - - -	1564	265	
Giblin	- - - - -	14	---	
Gomes-Stuart	- - - - -	1457	106	
Halford	- - - - -	4857	1121	
Howard	- - - - -	36	10	
Johnson	- - - - -	24	---	
Libbee	- - - - -	5	---	
Loadel	- - - - -	5	140	
McKnight	- - - - -	144	166	
Palora	- - - - -	1352	262	
Peak	- - - - -	770	73	
Phillips	- - - - -	25	---	
Shasta	- - - - -	197	41	
Sims	- - - - -	88	---	
Sowell	- - - - -	65	72	
Stanford	- - - - -	196	9	
Starn	- - - - -	661	513	
Sullivan	- - - - -	187	56	
Vivian	- - - - -	1222	21	
Walton	- - - - -	9	2	
Williams	- - - - -	18	---	
Wiser	- - - - -	217	338	
Other	- - - - -	154	174	
TOTAL CLING PEACHES	1963	<u>19,360</u>	<u>4,713</u>	<u>24,073</u>
	1962	18,472	4,924	23,396

<u>PEACHES, FREESTONE</u>				
July Elberta	- - - - -	16	1	
Elberta	- - - - -	2958	212	
J. H. Hale	- - - - -	45	---	
Lovell	- - - - -	91	---	
Muir	- - - - -	27	---	
Red Globe	- - - - -	8	2	
Red Haven	- - - - -	8	---	
Rio Oso Gem	- - - - -	164	34	
Other	- - - - -	64	27	
TOTAL FREESTONE PEACHES	1963	<u>3,381</u>	<u>276</u>	<u>3,657</u>
	1962	3,207	440	3,647

<u>CROP</u>		<u>BEARING ACRES</u>	<u>NON-BEARING</u>	<u>TOTAL</u>	
	TOTAL ALL PEACHES	1963	22,741	4,989	27,730
		1962	21,679	5,364	27,043
<u>PEARS</u>					
	Bartlett	1963	104	569	
	Winter Nelis	1962	6	---	
	Other		---	20	
	TOTAL PEARS	1963	110	589	699
		1962	20	503	523
<u>PECANS</u>		1963	15	1	16
		1962	15	---	15
<u>PERSIMMONS</u>		1963	12	---	12
		1962	12	---	12
<u>PISTACHIO NUTS</u>		1963	1	---	1
		1962	---	1	1
<u>PLUMS</u>		1963	48	5	53
		1962	42	11	53
<u>POMEGRANATES</u>		1963	8	---	8
		1962	8	---	8
<u>PRUNES</u>		1963	1	41	42
		1962	1	40	41
<u>WALNUTS</u>					
	Ashley		---	69	
	Blackmer		55	16	
	Concord		72	---	
	Eureka		3480	1274	
	Franquette		3998	244	
	Hartley		2621	2607	
	Mayette		495	3	
	Nugget		---	212	
	Payne		2740	556	
	Placentia		6	---	
	Waterloo		188	135	
	Other		35	94	
	Seedling		12	84	
	TOTAL WALNUTS	1963	13,702	5,294	18,996
		1962	12,647	5,874	18,521

FIELD CROPS: ACREAGE, PRODUCTION, AND VALUE, 1962-63

Crop	Year	Harvested acres	Production			Value		
			Per acre	Total	Unit	Per unit	Total	
Barley	1963	39,000	1.1	42,900	Ton	45.40	\$1,948,000	
	Rev. 1962	42,500	.80	34,000	"	45.00	1,530,000	
<u>Beans, dry edible</u>	1963	34,700	.91	31,610	Ton	179.70	5,683,000	
	(Total 1962)	35,400	.78	27,680	"	173.01	4,789,000	
(Blackeyes	1963	8,200	.80	6,560	Ton	200.00	1,312,000	
	1962	6,100	.60	3,660	"	150.00	549,000	
(Baby Limas	1963	8,500	1.2	10,200	Ton	140.00	1,428,000	
	1962	7,300	1.0	7,300	"	140.00	1,022,000	
(Large Limas	1963	9,000	.85	7,650	Ton	220.00	1,683,000	
	1962	11,000	.76	8,360	"	220.00	1,839,000	
(Other varieties	1963	9,000	.80	7,200	Ton	175.00	1,260,000	
	1962	11,000	.76	8,360	"	165.00	1,379,000	
<u>Corn</u>	1963	2,500	2.0	5,000	Ton	52.00	260,000	
	1962	2,000	1.1	2,200	"	50.00	110,000	
<u>Cotton Lint</u>	1963	55	802 <u>a/</u>	88	Bale <u>b/</u>	.363 <u>c/</u>	16,000	
	1962	89	890 <u>a/</u>	158	" <u>b/</u>	.355 <u>c/</u>	28,100	
<u>Cottonseed</u>	1963			36	Ton	42.00	1,520	
	1962			60	"	51.00	3,060	
<u>Hay</u>	(Alfalfa	1963	58,000	7.0	406,000	Ton	26.00	10,556,000
		1962	60,000	7.10	426,000	"	23.50	10,011,000
(Grain	1963	14,000	2.0	28,000	Ton	22.00	616,000	
	1962	14,000	2.0	28,000	"	20.00	560,000	
(Wild	1963	1,000	1.50	1,500	Ton	20.00	30,000	
	1962	1,000	1.50	1,500	"	17.00	25,500	
<u>Oats</u>	1963	4,000	.8	3,200	Ton	48.40	155,000	
	1962	4,000	1.0	4,000	"	45.00	180,000	
<u>Pasture &amp; Range</u>	(Irrigated pasture	1963	82,000	---	---	Acre	45.00	3,690,000
		1962	88,000	---	---	"	45.00	3,960,000
(Sudan Grass	1963	3,400	---	---	Acre	30.00	102,000	
	1962	3,900	---	---	"	30.00	117,000	
(Range	1963	420,000	---	---	Acre	4.00	1,680,000	
	1962	424,000	---	---	"	4.00	1,696,000	

a/ Pounds  
b/ 500 lb. gross wt.  
c/ Per pound



FIELD CROPS: ACREAGE, PRODUCTION, AND VALUE, 1962-63

Crop	Year	Harvested acres	Production		Unit	Value	
			Per acre	Total		Per unit	Total
<u>Rice</u>	1963	2,100	2.0	4,200	Ton	101.00 \$	424,000
	1962	2,123	2.4	5,095	"	95.00	484,000
<u>Silage</u> (Corn)	1963	21,500	12.5	269,000	Ton	6.00	1,614,000
	1962	21,000	12.5	263,000	"	5.50	1,447,000
<u>Sorghum Grain</u>	1963	4,300	2.0	8,600	Ton	45.00	387,000
	1962	5,000	1.80	9,000	"	43.00	387,000
<u>Straw</u> (Grain)	1963	---	---	4,000	Ton	10.00	40,000
	1962	---	---	4,000	"	10.00	40,000
<u>Wheat</u>	1963	500	.75	375	Ton	64.00	24,000
	1962	150	1.42	213	"	71.40	15,000
<u>Sugar Beets</u>	1963	4,250	21.6	91,800	Ton	12.00	1,102,000
	1962	3,420	20.75	70,965	"	13.00	923,000
<u>Misc. Field Crops</u>	1963	1,000	---	---	Acre	100.00	100,000
	1962	1,000	---	---	"	95.00	95,000
<b>TOTAL</b>	1963	692,305	---	---	---	---	28,428,520
	1962	707,582	---	---	---	---	26,400,660

SEED CROPS: ACREAGE, PRODUCTION, AND VALUE, 1962-63

<u>Alfalfa</u> (Certified)	1963	2,470	600	1,482,000	Lbs.	.37	548,000
	1962	1,389	560	777,800	"	.45	350,000
(Common)	1963	1,040	500	520,000	Lbs.	.315	164,000
	1962	1,735	400	694,000	"	.32	222,000
<u>Peas</u>	1963	1,060	2,280	2,416,000	Lbs.	.05	121,000
	1962	1,500	2,200	3,300,000	"	.05	165,000
<u>Red Clover</u>	1963	540	698	377,000	Lbs.	.40	151,000
	1962	430	370	159,000	"	.46	73,000

SEED CROPS: ACREAGE, PRODUCTION, AND VALUE, 1962-63

<u>Misc. Field and Vegetable Crops</u>	1963	1,800	---	---	Acre	95.00	171,000
	1962	2,875	---	---	"	75.00	216,000
TOTAL	1963	6,910	---	---	---	---	1,155,000
	1962	7,929	---	---	---	---	1,026,000

VEGETABLE CROPS: ACREAGE, PRODUCTION, AND VALUE, 1962-63

Crop	Year	Harvested acres	Production		Value		
			Per acres	Total	Unit	Per unit	Total
<u>Beans, Green Lima</u>	1963	4,470	1.50	6,720	Ton	143.00	\$ 961,000
	1962	6,880	1.28	8,810	"	152.00	1,339,000
<u>Broccoli</u>	1963	338	2.50	845	Ton	130.00	110,000
	1962	69	2.25	155	"	140.00	21,700
<u>Carrots</u>	1963	195	22.0	4,290	Ton	20.00	86,000
	1962	387	20.0	7,740	"	20.00	155,000
<u>Cauliflower</u>	1963	612	4.5	2,750	Ton	130.00	358,000
	1962	604	3.8	2,295	"	130.00	298,000
<u>Corn, sweet</u>	1963	50	4.1	205	Ton	75.00	15,400
	1962	50	4.0	200	"	75.00	15,000
<u>Lettuce, head</u>	1963	650	10.0	6,500	Ton	60.00	390,000
	1962	426	10.0	4,260	"	70.00	298,000
<u>Melons</u>							
(Cantaloupe)	1963	845	7.9	6,675	Ton	55.50	370,000
	1962	1,320	5.9	7,788	"	53.00	413,000
(Honeydews)	1963	2,598	8.9	23,122	Ton	66.00	1,526,000
	1962	2,969	8.0	23,752	"	60.00	1,425,000
(Persian)	1963	450	5.0	2,250	Ton	85.00	191,000
	1962	695	6.0	4,170	"	82.50	344,000
(Other Muskmelons)	1963	629	7.0	4,400	Ton	87.50	385,000
	1962	686	6.8	4,665	"	80.00	373,000
(Watermelons)	1963	1,140	10.6	12,100	Ton	25.05	303,000
	1962	925	12.0	11,100	"	27.50	305,000

VEGETABLE CROPS: ACREAGE, PRODUCTION, AND VALUE, 1962-63

Crop	Year	Harvested acres	Production		Unit	Value	
			Per acre	Total		Per unit	Total
<u>Onions</u>	1963	156	20.0	3,125	Ton	32.00 \$	100,000
	1962	203	20.0	4,060	"	44.00	178,000
<u>Peas, green</u>	1963	4,100	1.75	7,170	Ton	70.00	502,000
	1962	4,120	1.75	7,210	"	68.00	490,000
<u>Peppers, Bell</u>	1963	1,240	14.6	18,100	Ton	48.40	876,000
	1962	638	12.0	7,656	"	83.00	635,000
<u>Pumpkins</u>	1963	135	18.5	2,500	Ton	11.80	29,500
	1962	390	20.5	7,990	"	9.20	73,600
<u>Spinach</u>	1963	1,300	8.46	11,000	Ton	23.40	257,000
	1962	1,310	9.08	11,900	"	23.40	278,000
<u>Squash</u>	1963	29	15.0	435	Ton	13.62	5,920
	1962	57	10.0	570	"	20.00	11,400
<u>Sweet Potatoes</u>	1963	953	3.0	2,860	Ton	130.00	372,000
	1962	644	2.0	1,288	"	140.00	180,000
<u>Tomatoes (Total)</u>	1963	8,730	16.7	147,000	Ton	36.44	5,320,000
	1962	8,135	16.5	134,200	"	40.95	5,495,000
(Fresh	1963	1,600	8.0	12,800	Ton	150.00	1,920,000
	1962	2,000	7.2	14,400	"	152.77	2,200,000
(Ripes to Cannery from fresh fields)	1963	---	1.4	1,410	Ton	25.20	35,500
	1962	---	4.9	9,800	"	27.50	270,000
(Cannery	1963	7,130	18.6	132,620	Ton	25.42	3,365,000
	1962	6,135	18.0	110,000	"	27.50	3,025,000
<u>Misc. Vegetables</u>	1963	1,330	---	---	Acre	375.00	499,000
	1962	800	---	---	"	175.00	140,000
TOTAL	1963	29,950	---	---	---	---	12,656,820
	1962	31,308	---	---	---	---	12,467,700

FRUIT & NUT CROPS: ACREAGE, PRODUCTION, AND VALUE, 1962-63

Crop	Year	Bearing acres	Production		Unit	Value	
			Per acre	Total		Per unit	Total
<u>Almonds</u>	1963	7,667	.89	6,820	Ton	510.00	\$ 3,478,000
	1962	6,346	.885	5,620	"	550.00	3,091,000
<u>Apricots</u> (Total)	1963	3,932	10.1	39,700	Ton	83.55	3,317,000
	1962	2,831	7.9	22,468	"	110.20	2,476,000
(Canned)	1963	---	---	24,200	Ton	90.00	2,178,000
	1962	---	---	17,900	"	113.00	2,025,000
(Frozen)	1963	---	---	1,000	Ton	90.00	90,000
	1962	---	---	500	"	128.00	64,000
(Juice)	1963	---	---	13,000	Ton	70.00	910,000
	1962	---	---	3,300	"	90.00	297,000
(Dried)	1963	---	---	180	Ton	770.00	139,000
	1962	---	---	96	"	940.00	90,200
<u>Bushberries</u> (Total)	1963	512	4.84	2,480	Ton	275.85	684,100
	1962	700	5.07	3,552	"	226.43	804,000
(Ollalie & Blackberries)	1963	16	5.9	95	Ton	222.00	21,100
	1962	52	6.0	312	"	190.00	59,300
<u>Boysen &amp; Youngberries</u>	1963	496	4.8	2,385	Ton	278.00	663,000
	1962	648	5.0	3,240	"	230.00	745,000
<u>Cherries</u>	1963	86	1.0	86	Ton	270.00	23,200
	1962	66	1.5	99	"	240.00	23,760
<u>Grapes</u> (Total all)	1963	18,434	8.00	147,530	Ton	36.54	5,390,000
	1962	15,909	7.81	124,208	"	47.41	5,887,700
(Raisin Varieties (Total))	1963	8,398	8.7	73,000	Ton	34.85	2,544,000
	1962	7,085	7.5	53,137	"	45.03	2,392,700
(Fresh Market	* 1963	---	---	---	---	---	---
	* 1962	---	---	---	---	---	---
(Dried green wt. (Natural Thompsons)	1963	---	---	650	Ton	35.00	22,800
	1962	---	---	600	"	50.50	30,300
(Golden bleached (Thompsons)	1963	---	---	6,300	Ton	34.00	214,000
	1962	---	---	5,200	"	41.92	218,000

\*Figures not available

FRUIT & NUT CROPS: ACREAGE, PRODUCTION, AND VALUE, 1962-63

Crop	Year	Bearing acres	Production		Unit	Value	
			Per acre	Total		Per unit	Total
(Canned	1963	---	---	7,610	Ton	50.00 \$	380,000
	1962	---	---	1,175	"	65.00	76,400
(Crushed	1963	---	---	58,400	Ton	33.00	1,927,000
	1962	---	---	46,162	"	44.80	2,068,000
(Table Varieties	1963	472	6.0	2,830	Ton	39.19	111,000
	1962	479	9.0	4,311	"	43.70	188,000
(Fresh Market	1963	---	---	105	Ton	200.00	21,000
	1962	---	---	---	---	---	---
(Crushed	1963	---	---	2,725	Ton	33.00	89,900
	1962	---	---	4,311	"	43.70	188,000
(Wine Varieties (Total)	1963	9,564	7.5	71,700	Ton	38.15	2,735,000
	1962	8,345	8.0	66,760	"	49.54	3,307,000
(Fresh Market (1)	1963	---	---	4,830	Ton	40.00	193,000
	1962	---	---	5,563	"	50.00	278,000
(Crushed (2)	1963	---	---	66,900	Ton	38.00	2,542,000
	1962	---	---	61,197	"	49.50	3,029,000
<u>Nectarines</u>	1963	271	6.5	1,760	Ton	72.73	128,000
	1962	232	6.50	1,508	"	71.08	107,000
<u>Olives</u>	1963	235	.80	188	Ton	205.00	38,500
	1962	242	.83	202	"	204.00	41,200
<u>Peaches, Clings*</u>	1963	18,946	12.6	239,000	Ton	69.33	16,570,000
	1962	18,299	11.5	211,000	"	63.93	13,490,000
<u>Peaches, Freestone</u>	1963	3,381	10.7	36,300	Ton	45.56	1,654,000
	1962	3,116	10.3	32,100	"	44.00	1,412,000
<u>Strawberries</u>	1963	130	4.5	585	Ton	260.00	152,000
	1962	172	5.00	860	"	240.00	206,000
<u>Walnuts</u>	1963	13,702	.72	9,860	Ton	440.00	4,338,000
	1962	12,166	.70	8,516	"	460.00	3,917,000
<u>Misc. Fruits &amp; Nuts*</u>	1963	237	---	---	Acre	330.00	78,200
	1962	122	---	---	"	325.00	39,700
TOTAL	1963	67,533	---	---	---	---	35,851,000
	1962	60,201	---	---	---	---	31,495,360

\* Cling Peach Association Estimate

+ Includes Figs, Pomegranates, Persimmons, Pecans, Pears and Plums

(1) On the vine price

(2) Delivered to winery

NURSERY PRODUCTS: PRODUCTION AREA, SALES, AND VALUE 1962-63

Item	Year	Production area		Quantity sold by Producers	Unit	Value		
		House sq. ft.	Field acres			Per unit	Total	
<b>Nursery Crops</b>								
(Deciduous fruit & nut trees	1963	---	130	1,040,000	Plants	.673	\$	700,000
	1962	---	88	907,476	Plants	.636		577,000
(Grapevines	1963	---	40	345,000	Plants	.07		24,200
	1962	---	50	446,000	Plants	.065		29,000
(Rose Plants	1963	---	21	309,000	Plants	.272		84,200
	Rev. 1962	---	198	2,975,000	Plants	.265		788,000
(Small fruit plants	1963	---	14	4,592,000	Plants	.012		55,020
	1962	---	15	5,500,000	Plants	.014		77,000
(Vegetable plants	1963	---	7	1,372,000	Plants	.006		8,230
	1962	---	15	2,615,000	Plants	.006		15,700
(Ornamental trees & shrubs <u>a/</u>	1963	---	33	281,000	Plants	.498		140,000
	1962	---	37	326,352	Plants	.405		132,000
(Indoor decoratives	1963	70,000	---	173,000	Plants	.76		132,000
	1962	64,200	---	129,000	Plants	1.05		136,000
(Misc. Nursery stock <u>b/</u>	1963	---	40	---	Acre	1505.00		60,200
	Rev. 1962	---	25	---	Acre	1175.00		29,380
TOTAL	1963	---	---	---	---	---		\$1,203,850
	Rev. 1962	---	---	---	---	---		1,784,080

a/ Includes broadleaf evergreens, coniferous evergreens, deciduous shade trees, and deciduous shrubs.

b/ Includes bedding plants, cut green decoratives and turf.

LIVESTOCK AND POULTRY: PRODUCTION AND VALUE, 1962-63

	Year	Production		Unit	Value	
		No. of head	Total liveweight		Per unit	Total
<u>Cattle and calves</u>	1963	62,000	527,000	cwt.	22.00	\$ 11,594,000
(Beef)	1962	60,200	511,700	"	24.00	12,281,000
(Dairy)	1963	60,000	260,000	cwt.	12.50	3,250,000
	1962	60,000	260,000	"	13.00	3,380,000
<u>Sheep and lambs</u>	1963	7,410	8,522	cwt.	18.00	154,000
	1962	7,800	8,970	"	20.00	179,000
<u>Hogs and pigs</u>	1963	8,700	13,050	cwt.	16.00	209,000
	1962	8,700	13,050	"	17.25	225,000
<u>Horses and mules</u>	1963	1,700	---	Head	275.00	468,000
	1962	1,300	---	"	275.00	358,000
<u>Broilers and fryers</u>	1963	7,284,000	25,816,000	Lbs.	.158	4,092,000
	1962	5,104,000	18,885,000	"	.162	3,059,000
<u>Other chickens</u>	1963	1,921,000	8,644,000	Lbs.	.08	692,000
	1962	1,865,000	8,393,000	"	.08	671,000
<u>Chicks</u>	1963	29,325,000	---	each	.131	3,842,000
	1962	27,475,000	---	"	.137	3,764,000
<u>Turkeys, heavy</u>	1963	1,500,000	29,502,000	Lbs.	.215	6,343,000
(Revised)	1962	1,560,000	30,675,000	"	.207	6,350,000
<u>Turkeys, poults</u>	1963	4,962,000	---	each	.567	2,813,000
	1962	4,989,000	---	"	.556	2,774,000
<u>Rabbits</u>	1963	19,000	85,500	Lbs.	.208	17,500
	1962	20,000	90,000	"	.228	20,500
TOTAL	1963	---	---	---	---	\$ 33,474,500
(Revised)	1962	---	---	---	---	33,061,500

LIVESTOCK AND POULTRY PRODUCTS: PRODUCTION AND VALUE, 1962-63

	Year	Production	Unit	Per unit	Total
<u>Milk</u>	1963	4,464,000	cwt.	4.13	18,436,000
Market (Revised)	1962	4,248,000	"	4.13	17,544,000
Manufacturing	1963	3,053,000	cwt.	3.22	9,831,000
(Revised)	1962	3,180,000	"	3.22	10,240,000

LIVESTOCK AND POULTRY PRODUCTS: PRODUCTION AND VALUE, 1962-63

	Year	Production	Unit	Per unit	Total
Eggs, chicken (Market)	1963	48,800,000	Doz.	.2859	13,952,000
	1962	43,739,000	"	.2775	12,138,000
(Hatching)	1963	2,791,000	Doz.	.718	2,005,000
	1962	---	---	---	---
Eggs, turkey (Hatching)	1963	6,565,000	each	.24	1,576,000
	1962	5,359,000	each	.23	1,233,000
Wool	1963	180,000	lbs.	.42	75,600
	* 1962	---	---	---	---
TOTAL	1963	---	---	---	45,875,600
	* 1962	---	---	---	41,155,000

JANUARY 1 INVENTORIES OF LIVESTOCK AND POULTRY, 1963-64  
(in number of head)

	January 1, 1963	January 1, 1964
<u>Cattle and calves</u>		
(Milk cows 2 years and over)	Rev. 86,100	85,000
(Cattle and calves on feed)	77,100	79,400
<u>Sheep and lambs</u>	10,400	9,880
<u>Hogs and pigs</u>	8,500	8,700
<u>Hens and pullets of laying age</u>	2,338,000	2,400,000
<u>Turkey Breeding hens</u>	74,000	100,000

\* Not available



APIARY PRODUCTS: PRODUCTION AND VALUE, 1962-63

	Year	Production		Value	
		Total	Unit	Per unit	Total
<u>Honey</u>	1963	752,000	Lbs.	.150	\$ 113,000
	1962	806,000	"	.133	107,000
<u>Beeswax</u>	1963	12,500	Lbs.	.430	5,360
	1962	15,000	"	.436	6,540
<u>Package Bees</u>	1963	1,550	Lbs.	.800	1,240
	1962	3,000	"	.560	1,630
<u>Queen Bees</u>	1963	175	Each	1.25	219
	* 1962	---	---	---	---
<u>Pollination</u>	1963	10,000	Colony	2.50	25,000
	1962	10,000	"	2.00	20,000
TOTAL	1963	---	---	---	\$ 144,819
	1962	---	---	---	135,220

\* Not available

\* S U M M A R Y \*

<u>ITEM</u>		<u>ACREAGE</u>	<u>ESTIMATED VALUE</u>
Field Crops	1963	692,305	28,428,520
	(Revised) 1962	707,150	26,400,660
Seed Crops	1963	6,910	1,155,000
	1962	7,929	1,026,000
Vegetable Crops	1963	29,950	12,656,820
	1962	31,308	12,467,700
Fruit & Nut Crops	1963	67,533	35,851,000
	1962	60,201	31,495,360
Nursery Products	1963	---	1,203,850
	(Revised) 1962	---	1,784,080
Livestock & Poultry	1963	---	33,474,500
	(Revised) 1962	---	33,061,500
Livestock & Poultry Products	1963	---	45,875,600
	(Revised) 1962	---	41,155,000
Apiary Products	1963	---	144,819
	1962	---	135,220
Total	1963	796,698	158,790,109
	(Revised) 1962	806,588	147,525,520