



**AgEcon** SEARCH  
RESEARCH IN AGRICULTURAL & APPLIED ECONOMICS

*The World's Largest Open Access Agricultural & Applied Economics Digital Library*

**This document is discoverable and free to researchers across the globe due to the work of AgEcon Search.**

**Help ensure our sustainability.**

Give to AgEcon Search

AgEcon Search

<http://ageconsearch.umn.edu>

[aesearch@umn.edu](mailto:aesearch@umn.edu)

*Papers downloaded from **AgEcon Search** may be used for non-commercial purposes and personal study only. No other use, including posting to another Internet site, is permitted without permission from the copyright owner (not AgEcon Search), or as allowed under the provisions of Fair Use, U.S. Copyright Act, Title 17 U.S.C.*

California Department of Food and Agriculture

Agricultural Commissioners' Crop Reports

# Santa Clara County

1975-1980

California County Agricultural Commissioners' Reports from the California Department of Food and Agriculture. This collection consists of annual crop and livestock data from each of the 58 California Counties. The collection covers 1915-1981; digitization of the rest of the collection is forthcoming.

This digitization project was funded by the Giannini Foundation of Agricultural Economics,  
<http://giannini.ucop.edu/>.

The work was completed by the staff of the Giannini Foundation Library, University of California, Berkeley, <http://are.berkeley.edu/library/>. **Please contact the Library to consult the originals.**

1975

# County of Santa Clara Agricultural Crop Report 1975

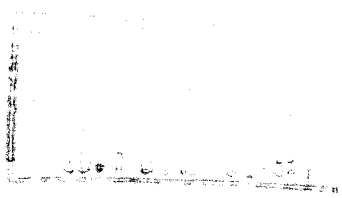




TABLE OF CONTENTS

	<u>PAGE</u>
Fruit and Nuts	1
Bushberries and Strawberries	1
Vegetable Crops	1
Seed Crops	3
Field Crops	3
Nursery Products - Cut Flowers	4
Nursery Products - Nursery Stock	4
Apiary Products	5
Livestock and Poultry	5
Livestock and Poultry Products	6
Inventories of Livestock and Poultry	6
Comparative Figures of Agricultural Values	7
Acreage Trend of Fruit and Nut Crops	8
Comparative Acreages of Major Fruit and Nut Crops of North County and South County	9

SANTA CLARA COUNTY  
DEPARTMENT OF AGRICULTURE

FRUIT AND NUTS

ITEM	YEAR	HARVESTED ACREAGE	PRODUCTION		UNIT	VALUE	
			PER ACRE	TOTAL		PER UNIT	TOTAL
Apricots	1975	2,819	4.86	13,700	Ton	\$ 300.	\$ 4,110,000
	1974	3,162	3.659	11,570	Ton	350.	4,071,000
Cherries	1975	1,021	2.92	2,980	Ton	610.	1,818,000
	1974	1,122	2.389	2,630	Ton	590.	1,579,000
Grapes	1975	2,334	3.33	7,770	Ton	205.	1,593,000
	1974	2,390	3.556	8,500	Ton	220.	1,870,000
Pears	1975	1,774	7.16	12,700	Ton	129.	1,638,000
	1974	1,894	7.76	14,692	Ton	168.	2,471,000
Prunes	1975	8,342	1.39	11,600	Ton	385.	4,466,000
	1974	9,907	1.302	12,900	Ton	460.	5,954,000
Walnuts	1975	3,704	0.648	2,400	Ton	470.	1,128,000
	1974	4,001	0.665	2,660	Ton	400.	1,064,000
Miscellaneous- Fruit, Nuts & Prickly Pears	1975	390			Ton		600,000
	1974	400			Ton		700,000
TOTALS	1975	20,384					\$15,353,000
	1974	22,876					17,709,000

BUSHBERRIES AND STRAWBERRIES

ITEM	YEAR	HARVESTED ACREAGE	PRODUCTION		UNIT	VALUE	
			PER ACRE	TOTAL		PER UNIT	TOTAL
Bushberries	1975	10	4.50	45	Ton	300.	\$ 13,500
	1974	16	4.31	69	Ton	750.	51,600
Strawberries	1975	360	19.5	7,020	Ton	517.	3,629,000
	1974	373	19.22	7,170	Ton	492.	3,526,000
TOTALS	1975	372					\$ 3,642,500
	1974	389					3,577,600

VEGETABLE CROPS

ITEM	YEAR	HARVESTED ACREAGE	PRODUCTION		UNIT	VALUE	
			PER ACRE	TOTAL		PER UNIT	TOTAL
Anise	1975	10	8.75	88	Ton	180.	\$ 15,800
	1974	7	7.88	55	Ton	178.	9,800
Beans, Snap	1975	335	4.57	1,530	Ton	370.	566,000
	1974	325	1.98	645	Ton	265.	171,000
Broccoli	1975	50	2.60	130	Ton	280.	36,400
	1974	95	2.80	266	Ton	280.	74,000

SANTA CLARA COUNTY  
DEPARTMENT OF AGRICULTURE

VEGETABLE CROPS - CONTINUED

ITEM	YEAR	HARVESTED ACREAGE	PRODUCTION		UNIT	VALUE	
			PER ACRE	TOTAL		PER UNIT	TOTAL
Cabbage	1975	70	9.20	644	Ton	80.	\$ 51,500
	1974	110	11.2	1238	Ton	90.	211,000
Cauliflower	1975	55	4.00	220	Ton	240.	52,000
	1974	55	4.26	234	Ton	235.	55,000
Chinese Vegetables	1975	660	18.0	11,900	Ton	100.	1,190,000
	1974	600	15.0	9,000	Ton	113.	1,020,000
Corn	1975	240	5.58	1,340	Ton	160.	214,000
	1974	165	4.73	780	Ton	155.	121,000
Cucumbers	1975	1,240	14.0	17,400	Ton	120.	2,088,000
	1974	1,020	12.62	12,870	Ton	114.	1,468,000
Endive	1975	40	9.00	360	Ton	120.	43,200
	1974	55	8.75	480	Ton	98.	47,000
Garlic	1975	500	5.20	2,600	Ton	382.	993,000
	1974	420	4.5	1,890	Ton	340.	643,000
Lettuce, Head	1975	625	10.7	6,690	Ton	116.	776,000
	1974	45	10.32	465	Ton	92.	43,000
Leaf	1975	390	5.79	2,260	Ton	173.	391,000
	1974	470	5.72	2,688	Ton	164.	440,000
Romaine	1975	90	15.9	1,430	Ton	66.	94,400
	1974	115	17.28	1,987	Ton	61.	122,000
Mushrooms	1975	55	86.0	4,730	Ton	1,340.	6,338,000
	1974	51	76.98	3,926	Ton	1,240.	4,868,000
Mustard Greens	1975	50	4.30	215	Ton	240.	51,600
	1974	50	3.5	175	Ton	200.	35,000
Onions	1975	505	22.6	11,400	Ton	200.	2,280,000
	1974	530	22.5	11,925	Ton	190.	1,193,000
Peppers, Bell	1975	860	9.50	8,170	Ton	152.	1,242,000
	1974	1,130	12.94	14,625	Ton	138.	2,019,000
Peppers, Chili & Wax	1975	315	6.51	2,050	Ton	370.	758,000
	1974	360	8.5	3,060	Ton	280.	857,000
Spinach	1975	80	5.60	448	Ton	300.	134,000
	1974	80	6.3	504	Ton	270.	136,000
Squash	1975	105	7.80	819	Ton	162.	133,000
	1974	100	8.81	880	Ton	167.	147,000



## SANTA CLARA COUNTY

## DEPARTMENT OF AGRICULTURE

## VEGETABLE CROPS - CONTINUED

ITEM	YEAR	HARVESTED ACREAGE	PRODUCTION		UNIT	VALUE	
			PER ACRE	TOTAL		PER UNIT	TOTAL
Tomatoes	1975	85	19.1	1,620	Ton	\$ 230.	\$ 373,000.
Fresh	1974	110	18.7	2,060	Ton	205.	422,000.
Processed	1975	8,500	24.9	212,000	Ton	55.	11,660,000.
	1974	8,000	26.0	208,000	Ton	55.	11,440,000.
Cherry	1975	70	22.6	1,580	Ton	340.	537,000.
	1974	30	16.5	495	Ton	480.	238,000.
Misc. Vegetables 1/	1975	700			Ton		800,000.
	1974	660			Ton		700,000.
TOTALS	1975	15,617					\$ 30,818,700.
	1974	14,583					26,379,800.

1/ Not reported separately to avoid disclosure of confidential business data.

## SEED CROPS

CROP	YEAR	HARVESTED ACREAGE	PRODUCTION TONS	TOTAL
Flower & Vegetable Seed	1975	1,362	464	\$ 1,036,000.
	1974	2,120	768	1,518,000.

## FIELD CROPS

ITEM	YEAR	HARVESTED ACREAGE	PRODUCTION		UNIT	VALUE	
			PER ACRE	TOTAL		PER UNIT	TOTAL
Barley	1975	1,000	1.1	1,100	Ton	\$ 85.	\$ 93,500.
	1974	400	1.1	440	Ton	95.	41,800.
Oats	1975	700	1.7	1,190	Ton	80.	95,000.
Hay, Alfalfa	1975	230	5.2	1,200	Ton	60.	72,000.
	1974	250	5.2	1,300	Ton	70.	91,000.
Grain	1975	6,350	0.99	6,300	Ton	80.	504,000.
	1974	6,400	1.9	12,200	Ton	45.	549,000.
Other	1975	4,000	0.5	2,000	Ton	40.	80,000.
	1974	4,000	0.5	2,000	Ton	35.	70,000.
Pasture & Range Improved	1975	3,500			Acre	35.	122,000.
	1974	3,500			Acre	35.	122,000.
Irrigated	1975	1,500			Acre	150.	225,000.
	1974	1,500			Acre	150.	225,000.
Range	1975	220,000			Acre	6.	1,320,000.
	1974	220,000			Acre	6.	1,320,000.
Sugar Beets	1975	2,120	31.0	65,700	Ton	28.	1,840,000.
	1974	500	25.0	11,500	Ton	55.	632,500.
TOTALS	1975						\$ 4,351,500.
	1974						3,051,300.

SANTA CLARA COUNTY  
DEPARTMENT OF AGRICULTURE

NURSERY PRODUCTS - CUT FLOWERS

	YEAR	PRODUCTION AREA		SOLD BY PRODUCERS	UNIT	VALUE	
		HOUSE SQ. FT.	FIELD ACRES			PER UNIT	TOTAL
Aster	1975		78.	16,380,000	Bloom	\$ .044	\$ 721,000.
	1974		78.	16,380,000	Bloom	.03	491,000.
Carnations	1975	3,513,000		63,234,000	Bloom	.08	5,059,600.
Standard	1974	3,592,000		64,643,000	Bloom	.05	3,232,000.
Miniature	1975	287,000		642,000	Bunch	1.08	693,000.
	1974	267,000		595,000	Bunch	1.05	625,000.
Chrysanthemums	1975						
Standard		15,796,000		47,390,000	Bloom	.22	10,426,000.
Other Types		5,660,000		16,980,000	Bloom	.15	2,547,000.
Pompon		10,404,000		6,763,000	Bunch	.79	5,343,000.
Total		31,860,000					18,316,000.
Chrysanthemums	1974						
Standard		16,588,000		49,782,000	Bloom	.192	9,554,000.
Other Types		5,442,000		16,326,000	Bloom	.14	2,286,000.
Pompon		9,949,000		6,467,000	Bunch	.78	5,044,000.
Total		31,979,000					16,884,000.
Roses	1975	269,000		2,995,000	Bloom	.113	338,000.
Standard	1974	248,000		3,302,000	Bloom	.115	380,000.
Miniature	1975	78,000		951,000	Bloom	.068	64,700.
	1974	30,000		728,000	Bloom	.067	49,000.
Miscellaneous 1/	1975						101,000.
	1974						102,000.
TOTALS	1975						\$ 25,292,700.
	1974						21,763,000.

1/ Includes Acacia, Eucalyptus, Stephanotis, Bells of Ireland, Snapdragons, Statice, etc.

NURSERY PRODUCTS - NURSERY STOCK

CROP	YEAR	PRODUCTION AREA		QUANTITY SOLD BY PRODUCERS	UNIT	VALUE	
		HOUSE SQ. FT.	FIELD ACRES			PER UNIT	TOTAL
Bedding Plants	1975	415,000	7.0	354,000	Var.	Var.	\$ 734,000.
	1974	517,000	11.0	785,000	Var.	Var.	1,900,000.
Christmas Trees	1975		243.0	25,000	Trees	8.67	217,000.
	1974		192.5	19,000	Trees	8.15	155,000.
Ornamental Trees, Boses & Shrubs	1975	144,000	95.0	1,040,000	Plants	Var.	2,861,000.
	1974	118,500	114.0	886,000	Plants	Var.	3,044,000.
Miscellaneous 1/	1975	502,000	15.0	8,703,000	Plants	Var.	1,606,000.
	1974						1,038,000.
TOTALS	1975						\$ 5,418,000.
	1974						6,137,000.

1/ Includes indoor decoratives, Propagative materials, Vegetable plants, and Herbaceous Perennials.

SANTA CLARA COUNTY  
DEPARTMENT OF AGRICULTURE

APIARY PRODUCTS

ITEM	YEAR	PRODUCTION	UNIT	VALUE		TOTAL
				PER UNIT		
Honey	1975	145,000	Lbs.	\$ .40	\$	58,000.
	1974	87,000	Lbs.	.45		39,000.
Bees Wax	1975	1,800	Lbs.	1.10		2,000.
	1974	1,450	Lbs.	1.25		1,800.
TOTALS	1975				\$	60,000.
	1974					40,800.

LIVESTOCK AND POULTRY

ITEM 1/	YEAR	NUMBER OF HEAD	PRODUCTION	UNIT	VALUE	TOTAL
			TOTAL LIVELIGHT		PER UNIT	
Cattle and Calves	1975	16,300	87,400	Cwt.	\$ 30.	\$ 2,622,000.
	1974	19,300	83,000	Cwt.	45.	3,735,000.
Breeding Stock	1975	235		Each	451.	106,000.
	1974	230		Each	540.	124,000.
Sheep and Lambs	1975	340	340	Cwt.	47.	16,000.
	1974	650	650	Cwt.	44.	28,600.
Hogs and Pigs	1975	380	556	Cwt.	65.	36,100.
	1974	170	290	Cwt.	30.	8,700.
Broilers & Fryers	1975	34,000	136,000	Lbs.	.235	32,000.
	1974	32,000	131,000	Lbs.	.235	30,800.
Other Chickens	1975	430,000	1,720,000	Lbs.	.048	82,600.
	1974	384,000	1,536,000	Lbs.	.056	86,000.
TOTALS	1975					\$ 2,894,700.
	1974					4,013,100.

1/ Livestock figures are based on average weight and average selling price of all animals. Figures show only local net weight gain of animals originally purchased from out of County.

SANTA CLARA COUNTY  
DEPARTMENT OF AGRICULTURE

LIVESTOCK AND POULTRY

ITEM	YEAR	PRODUCTION	UNIT	VALUE	
				PER UNIT	TOTAL
Milk	1975	968,000	Cwt.	\$ 9.18	\$ 8,886,000
Market	1974	846,000	Cwt.	8.34	7,056,000
Manufacturing	1975	4,580	Cwt.	7.14	32,700
	1974	11,600	Cwt.	6.79	78,800
Wool	1975	8,000	Lbs.	.50	4,000
	1974	7,700	Lbs.	.30	2,300
Eggs, Chicken <u>1/</u>	1975	12,056,000	Doz.	.44	5,305,000
	1974	11,329,000	Doz.	.45	5,100,000
TOTALS	1975				\$14,227,700
	1974				12,237,100

1/ Includes market and farm retail eggs.

INVENTORIES OF LIVESTOCK AND POULTRY  
(In Number of Head)

ITEM	January 1, 1975	January 1, 1976
Milk Cows & Heifers that have calved	8,700	8,200
Other Cattle and Calves	26,000	25,400
Total	34,700	33,600
Sheep and Lambs	1,200	840
Hogs and Pigs	130	210
Hens and Pullets of Laying age	728,000	800,000

## SANTA CLARA COUNTY

## DEPARTMENT OF AGRICULTURE

## COMPARATIVE FIGURES OF AGRICULTURAL VALUES

	<u>1945</u>	<u>1960</u>	<u>1970</u>	<u>1974</u>	<u>1975</u>
Bearing Acres Fruits, Nuts, All Berries	100,770	66,453	38,614	23,265	20,756
Vegetable Acreage	16,573	14,220	15,615	14,583	15,617
Fruit, Nut, Berry Crops	\$ 39,870,475	\$ 49,451,475	\$ 16,060,600	\$ 21,286,600	\$ 18,995,500
Vegetable Crops	6,788,581	8,624,480	13,869,700	26,379,800	30,818,700
Livestock, Poultry and Products	14,947,712	17,050,595	16,281,550	16,250,200	17,122,400
Field Crops and Apiary	2,574,203	3,053,975	2,037,300	3,092,100	4,411,500
Nursery Stock, Cut Flowers and Seed	1,075,000	13,122,985	17,287,200	29,418,000	31,746,700
<b>TOTALS</b>	<b>\$ 65,255,971.</b>	<b>\$ 91,303,510.</b>	<b>\$ 65,536,350.</b>	<b>\$ 96,426,700.</b>	<b>\$103,094,800.</b>

SANTA CLARA COUNTY  
DEPARTMENT OF AGRICULTURE

ACREAGE TRENDS

TOTAL BEARING AND NON-BEARING ACREAGE OF PRINCIPAL CROPS*	1960	1965	1970	1974	1975	1975 Loss or Gain
Apricots	12,096	7,832	5,276	3,171	2,828	- 343
Cherries	3,994	2,522	1,942	1,229	1,085	- 144
Pears	6,912	5,819	4,202	1,974	1,855	- 119
Grapes	3,859	3,369	2,694	2,437	2,394	- 43
Prunes	33,940	28,769	19,408	9,934	8,370	-1,564
Walnuts, English	8,918	7,501	5,498	4,049	3,746	- 303
Misc. Tree Crops (Apples, Peaches, B. Walnuts & Other)	578	919	706	524	493	- 31
<b>TOTAL ACREAGE OF ALL TREES AND VINES</b>	<b>70,297</b>	<b>56,731</b>	<b>39,726</b>	<b>23,318</b>	<b>20,778</b>	<b>-2,547</b>
Strawberries	1,480	287	330	373	362	
New Plantings of Trees & Vines	1,025	289	80	109	26	
Number of Orchard & Vineyard Parcels	5,919	4,506	3,461	2,078	1,869	

\* Excludes Bushberries and Prickly Pears

SANTA CLARA COUNTY  
DEPARTMENT OF AGRICULTURE

ACREAGE OF MAJOR FRUIT AND NUT CROPS  
NORTH COUNTY VS. SOUTH COUNTY\*

		1975	
		<u>Non-Bearing</u>	<u>Bearing</u>
Apricots	N Co	9	2,364
	S Co	0	455
	Total	9	2,819
Cherries, Bing	N Co	16	274
	S Co	19	341
	Total	35	615
Cherries, Royal Ann	N Co	7	144
	S Co	17	187
	Total	24	331
Cherries, All	N Co	24	444
	S Co	40	577
	Total	64	1,021
Grapes	N Co	45	770
	S Co	15	1,564
	Total	60	2,334
Pears, Bartlett	N Co	13	825
	S Co	0	1,430
	Total	13	2,255
Pears, All	N Co	81	1,166
	S Co	0	608
	Total	81	1,774
Prunes, French	N Co	25	2,221
	S Co	3	5,462
	Total	28	7,683
Prunes, Imperial	N Co	0	31
	S Co	0	344
	Total	0	375
Prunes, Sugar	N Co	0	14
	S Co	0	268
	Total	0	282
Prunes, All	N Co	25	2,268
	S Co	3	6,074
	Total	28	8,342
Walnuts	N Co	31	1,467
	S Co	11	2,237
	Total	42	3,704

---

		<u>Non-Bearing</u>	<u>Bearing</u>
TOTALS OF ABOVE	North County	215	8,479
	South County	69	11,515

\* Town of Coyote is used as the dividing point between North County and South County.

1976





# Agricultural Crop Report 1976

County of Santa Clara

County of Santa Clara  
California

March 8, 1977

TO: MR. JAMES G. YOUDE, ACTING DIRECTOR, CALIFORNIA DEPARTMENT OF  
FOOD AND AGRICULTURE AND THE HONORABLE BOARD OF SUPERVISORS OF  
THE COUNTY OF SANTA CLARA:

GERALDINE STEINBERG, CHAIRPERSON  
DOMINIC L. CORTESE                      RODNEY DIRIDON  
DAN MC CORQUODALE                      SIG SANCHEZ

AND

MR. WILLIAM SIEGAL, COUNTY EXECUTIVE

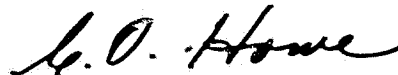
In accordance with the provisions of Section 2279 of the  
California Agricultural Code, I am pleased to submit this 1976  
Annual Agricultural Crop Report of the acreage, production and  
valuation of the agricultural crops and products produced in the  
County of Santa Clara.

It must be emphasized that this report reflects a gross return  
and in no way represents the actual profit to the producer.

I wish to express my sincere appreciation for the cooperation  
and assistance of all individuals and organizations who so willingly  
cooperated with this department in contributing the information  
necessary to make this report possible.

To all members of my staff, I express my sincere thanks for  
their diligent and conscientious effort in obtaining and compiling  
the information for this report.

Respectfully submitted,



C. O. HOWE  
AGRICULTURAL COMMISSIONER

TABLE OF CONTENTS

	<u>PAGE</u>
Fruit and Nuts	1
Bushberries and Strawberries	1
Vegetable Crops	1
Seed Crops	3
Field Crops	3
Nursery Products - Cut Flowers	4
Nursery Products - Nursery Stock	4
Apiary Products	5
Livestock and Poultry	5
Livestock and Poultry Products	6
Inventories of Livestock and Poultry	6
Comparative Figures of Agricultural Values	7
Acreage Trend of Fruit and Nut Crops	8
Comparative Acreages of Major Fruit and Nut Crops of North County and South County	9

SANTA CLARA COUNTY  
DEPARTMENT OF AGRICULTURE

ITEM	YEAR	HARVESTED ACREAGE	PRODUCTION		UNIT	VALUE	
			PER ACRE	TOTAL		PER UNIT	TOTAL
Apples	1976	2,120	4.10	8,690	Ton	\$ 290.	\$ 2,520,000
	1975	2,819	4.86	13,700	Ton	300.	4,110,000
Cherries	1976	825	3.60	2,970	Ton	615.	1,827,000
	1975	1,021	2.92	2,980	Ton	610.	1,818,000
Grapes	1976	2,155	3.30	7,110	Ton	215.	1,529,000
	1975	2,334	3.33	7,770	Ton	205.	1,593,000
Pears	1976	1,537	9.00	13,800	Ton	110.	1,518,000
	1975	1,774	7.16	12,700	Ton	129.	1,635,000
Prunes	1976	5,685	1.06	6,030	Ton	400.	2,412,000
	1975	8,342	1.39	11,600	Ton	385.	4,465,000
Walnuts	1976	2,900	0.40	1,160	Ton	650.	754,000
	1975	3,704	0.648	2,400	Ton	470.	1,128,000
Miscellaneous Fruit, Nuts & Prickly Pears	1976	340			Ton		700,000
	1975	390			Ton		600,000
TOTALS	1976	15,562					\$11,260,000
	1975	20,384					15,353,000

BUSHBERRIES AND STRAWBERRIES

ITEM	YEAR	ACREAGE	PER ACRE	TOTAL	UNIT	PER UNIT	TOTAL
Bushberries	1976	10	4.00	40	Ton	\$ 320.	\$ 12,800
	1975	10	4.50	45	Ton	300.	13,500
Strawberries	1976	350	19.50	6,820	Ton	630.	4,297,000
	1975	360	19.50	7,020	Ton	517.	3,629,000
TOTALS	1976	360					\$ 4,309,000
	1975	370					3,642,500

VEGETABLE CROPS

ITEM	YEAR	ACREAGE	PER ACRE	TOTAL	UNIT	PER UNIT	TOTAL
Asparagus	1976	10	8.00	80	Ton	175.	\$ 14,000
	1975	10	8.75	88	Ton	180.	15,800
Beans, Snap	1976	50	4.50	225	Ton	445.	100,000
	1975	335	4.57	1,530	Ton	370.	566,000
Brussels Sprouts	1976	10	2.00	20	Ton	250.	5,000
	1975	50	2.60	130	Ton	280.	36,400

SANTA CLARA COUNTY  
DEPARTMENT OF AGRICULTURE

VEGETABLE CROPS - CONTINUED

ITEM	YEAR	PRODUCTION		UNIT	VALUE		
		HARVESTED ACREAGE	PER ACRE TOTAL		PER UNIT	TOTAL	
Cabbage	1976	90	10.00	900	Ton	110.	\$ 99,000
	1975	70	9.20	644	Ton	80.	51,520
Cauliflower	1976	60	6.00	360	Ton	190.	68,400
	1975	55	4.00	220	Ton	240.	52,800
Chinese Vegetables	1976	800	14.0	11,200	Ton	120.	1,344,000
	1975	660	18.0	11,900	Ton	100.	1,190,000
Corn	1976	260	5.00	1,300	Ton	170.	221,000
	1975	240	5.58	1,340	Ton	160.	214,400
Cucumbers	1976	1,350	15.5	20,900	Ton	150.	2,715,000
	1975	1,240	14.0	17,400	Ton	120.	2,088,000
Eggplant	1976	30	7.00	210	Ton	145.	30,450
	1975	40	9.00	360	Ton	120.	43,200
Garlic	1976	650	5.70	3,700	Ton	370.	1,369,000
	1975	500	5.70	2,850	Ton	382.	993,000
Lettuce, Head	1976	900	9.0	8,100	Ton	155.	1,255,500
	1975	625	10.7	6,675	Ton	116.	775,050
Leaf	1976	400	5.5	2,200	Ton	265.	583,000
	1975	330	5.79	2,260	Ton	173.	391,000
Romaine	1976	80	17.0	1,360	Ton	85.	115,600
	1975	90	15.9	1,430	Ton	66.	94,380
Mushrooms	1976	70	87.0	6,030	Ton	1,400.	8,442,000
	1975	55	86.0	4,730	Ton	1,340.	6,338,200
Mustard Greens	1976	140	4.0	560	Ton	275.	154,000
	1975	50	4.30	215	Ton	240.	51,600
Onions	1976	300	18.5	5,550	Ton	95.	527,250
	1975	505	22.6	11,400	Ton	200	2,280,000
Peppers, Bell	1976	800	9.50	7,600	Ton	170.	1,292,000
	1975	860	9.50	8,170	Ton	152.	1,242,000
Peppers, Chili 5 Max	1976	400	7.5	3,000	Ton	350.	1,050,000
	1975	315	6.51	2,050	Ton	370.	758,500
Spinach	1976	80	7.0	560	Ton	340.	190,400
	1975	80	5.60	448	Ton	300.	134,400
Squash	1976	300	7.50	2,250	Ton	190.	428,000
	1975	105	7.80	819	Ton	162.	133,000

SANTA CLARA COUNTY  
DEPARTMENT OF AGRICULTURE

VEGETABLE CROPS - CONTINUED

ITEM	YEAR	PRODUCTION			UNIT	VALUE	
		HARVESTED ACREAGE	PER ACRE	TOTAL		PER UNIT	TOTAL
Tomatoes Fresh	1976	110	13.5	1,480	Ton	\$ 350.	\$ 518,000
	1975	85	19.1	1,620	Ton	230.	378,000
Processed	1976	7,100	17.5	124,000	Ton	47.	5,828,000
	1975	8,500	24.9	212,000	Ton	55.	11,660,000
Cherry	1976	60	22.0	1,320	Ton	190.	250,800
	1975	70	22.6	1,580	Ton	140.	221,200
Misc. Vegetables 1/	1976	1,200			Ton		900,000
	1975	700			Ton		500,000
TOTALS	1976	15,250					\$27,716,800
	1975	15,617					13,819,200

1/ Not reported separately to avoid disclosure of confidential business data.

SEED CROPS

CROP	YEAR	HARVESTED ACREAGE	PRODUCTION TONS	TOTAL
Flower & Vegetable Seed	1976	960	300	\$ 200,000
	1975	1,362	450	1,030,000

FIELD CROPS

ITEM	YEAR	PRODUCTION			UNIT	VALUE	
		HARVESTED ACREAGE	PER ACRE	TOTAL		PER UNIT	TOTAL
Barley	1976	170	.58	99	Ton	\$ 96.	\$ 9,504
	1975	1,000	1.1	1,100	Ton	85.	94,500
Hay, Alfalfa	1976	265	5.10	1,350	Ton	89.	120,000
	1975	230	5.2	1,200	Ton	60.	72,000
Grain	1976	3,770	0.515	1,940	Ton	70.	135,800
	1975	6,350	0.99	6,300	Ton	80.	504,000
Pasture & Range Improved	1976	3,500			Acre	35.	122,500
	1975	3,500			Acre	35.	122,500
Irrigated	1976	1,500			Acre	200.	300,000
	1975	1,500			Acre	150.	225,000
Range	1976	220,000			Acre	2.	440,000
	1975	220,000			Acre	6.	1,320,000
Sugar Beets	1976	2,140	38.	81,300	Ton	20.	1,626,000
	1975	2,120	31.	65,700	Ton	28.	1,841,600
TOTALS	1976	231,345					\$ 2,819,500
	1975	239,400					4,176,500

SANTA CLARA COUNTY

DEPARTMENT OF AGRICULTURE

NURSERY PRODUCTS - CUT FLOWERS

	YEAR	PRODUCTION AREA		SOLD BY PRODUCERS	UNIT	VALUE	
		HOUSE SQ. FT.	FIELD ACRES			PER UNIT	TOTAL
Aster	1976		40	8,400,000	Bloom	\$ .055	\$ 462,000
	1975		78	16,380,000	Bloom	.044	721,000
Carnations	1976	3,582,000		64,476,000	Bloom	.085	5,480,000
Standard	1975	3,513,000		63,234,000	Bloom	.08	5,059,000
Miniature	1976	281,000		627,000	Bunch	1.40	878,000
	1975	287,000		642,000	Bunch	1.08	693,000
Chrysanthemums	1976						
Standard		12,437,000		37,311,000	Bloom	.23	8,697,000
Other Types		6,578,000		19,764,000	Bloom	.18	3,558,000
Pompon		9,488,000		6,167,000	Bunch	1.05	6,475,000
Total		28,513,000					18,730,000
Chrysanthemums	1975						
Standard		15,796,000		47,330,000	Bloom	.22	10,413,000
Other Types		5,660,000		16,950,000	Bloom	.17	2,882,000
Pompon		10,404,000		6,763,000	Bunch	.75	5,072,000
Total		31,860,000					18,367,000
Roses	1976	341,000		4,340,000	Bloom	.12	520,000
Standard	1975	269,000		2,935,000	Bloom	.113	334,000
Miniature	1976	15,000		993,000	Bloom	.077	76,000
	1975	78,000		951,000	Bloom	.068	64,000
Miscellaneous 1/	1976						4,000
	1975						100,000
TOTALS	1976						\$ 27,000,000
	1975						23,200,000

1/ Includes Azalea, Eucalyptus, Stephanotis, Yarrow, Gypsophila, Iris, Statice, etc.

NURSERY PRODUCTS - NURSERY STOCK

CROP	YEAR	PRODUCTION AREA		QUANTITY SOLD BY PRODUCERS	UNIT	VALUE	
		HOUSE SQ. FT.	FIELD ACRES			PER UNIT	TOTAL
Bedding Plants	1976	125,000	10.0	342,000	Var.	Var.	\$ 600,000
	1975	415,000	7.0	354,000	Var.	Var.	334,000
Christmas Trees	1976		275.	28,000	Trees	9.10	254,800
	1975		243.0	25,000	Trees	8.67	217,000
Ornamental Trees, Roses & Shrubs	1976	105,000	100.	815,000	Plants	Var.	1,014,000
	1975	144,000	95.0	1,040,000	Plants	Var.	1,260,000
Miscellaneous 1/	1976	1,194,000	21.	6,332,000	Plants	Var.	1,210,000
	1975	502,000	15.0	8,703,000	Plants	Var.	1,200,000
TOTALS	1976						\$ 3,040,000
	1975						3,418,000

1/ Includes indoor decoratives, Propagative materials, Vegetable plants, and Herbaceous Perennials.

SANTA CLARA COUNTY  
DEPARTMENT OF AGRICULTURE

APIARY PRODUCTS

ITEM	YEAR	PRODUCTION	UNIT	VALUE	
				PER UNIT	TOTAL
Honey	1976	100,000	Lbs.	\$ .40	\$ 40,000
	1975	145,000	Lbs.	.40	58,000
Bees Wax	1976	2,000	Lbs.	1.10	2,200
	1975	1,800	Lbs.	1.10	1,980
TOTALS	1976				\$ 42,200
	1975				60,000

LIVESTOCK AND POULTRY

ITEM <sup>1/</sup>	YEAR	NUMBER OF HEAD	PRODUCTION	UNIT	VALUE	
			TOTAL LIVENEIGHT		PER UNIT	TOTAL
Cattle & Calves	1976	17,500	93,200	Cwt. \$ 30.	\$ 2,790,000	
	1975	16,300	87,400	Cwt. 30.	2,612,000	
Breeding Stock	1976	775		Ea. 415.	321,000	
	1975	215		Ea. 451.	96,900	
Sheep & Lamb	1976	850	820	Cwt. 51.	41,820	
	1975	340	340	Cwt. 47.	16,000	
Hogs & Pigs	1976	515	370	Cwt. 40.	14,800	
	1975	350	356	Cwt. 65.	23,140	
Chickens	1976	365,000	1,450,000	Lbs. .077	110,000	
	1975	410,000	1,720,000	Lbs. .045	77,000	
TOTALS	1976	382,040			\$ 3,147,000	
	1975	427,255			2,808,000	

<sup>1/</sup> Livestock figures are based on average weight and average selling price of all animals. Figures show only local net weight gain of animals originally purchased from out of County.



SANTA CLARA COUNTY  
DEPARTMENT OF AGRICULTURE

LIVESTOCK AND POULTRY

ITEM	YEAR	PRODUCTION	UNIT	VALUE	
				PER UNIT	TOTAL
Milk	1976	850,000	Cwt.	\$ 9.29	\$ 7,876,000
Market	1975	968,000	Cwt.	9.18	8,888,000
Manufacturing	1976	4,400	Cwt.	7.95	35,000
	1975	4,550	Cwt.	7.14	32,500
Eggs	1976	7,500	Lbs.	.70	5,250
	1975	8,000	Lbs.	.50	4,000
Broiler Chickens <u>1/2</u>	1976	13,310,000	Doz.	.55	7,320,500
	1975	12,035,000	Doz.	.44	5,295,000
TOTALS	1976				\$ 15,396,000
	1975				14,117,000

1/2 In retail market and farm retail eggs.

INVENTORIES OF LIVESTOCK AND POULTRY  
(In Number of Head)

ITEM	January 1, 1976	January 1, 1975
Milk cows & Heifers that have calved	8,700	7,241
Other cattle and Calves	23,400	19,600
Total	32,100	26,841
Sheep and Lambs	840	2,010
Pigs and Pigs	210	223
Hens and Pullets of Laying age	800,000	800,000

SANTA CLARA COUNTY  
DEPARTMENT OF AGRICULTURE

COMPARATIVE FIGURES OF AGRICULTURAL VALUES

	<u>1960</u>	<u>1970</u>	<u>1974</u>	<u>1975</u>	<u>1976</u>
Bearing Acres Fruits, Nuts, All Berries	66,453	38,614	23,265	20,756	15,922
Available Acreage	14,220	15,615	14,583	15,617	15,270
Fruit, Nut, Berry Crops	\$ 49,451,475	\$ 16,060,600	\$ 21,286,600	\$ 18,995,500	\$ 15,569,500
Available Crops	8,624,480	13,869,700	26,379,800	30,818,700	27,718,800
Livestock, Poultry and Bees etc.	17,030,595	16,231,550	16,350,700	17,122,400	18,603,250
Field Crops and Aquatic	3,033,975	2,037,300	3,022,100	4,411,500	2,796,100
Nursery Stock, Cut Flowers and Seed	13,112,985	17,287,200	23,418,000	31,746,700	32,659,500
<b>TOTALS</b>	<b>\$ 91,303,510.</b>	<b>\$ 65,536,350.</b>	<b>\$ 96,426,700.</b>	<b>\$103,074,800.</b>	<b>\$ 97,147,450.</b>

SANTA CLARA COUNTY  
DEPARTMENT OF AGRICULTURE

ACREAGE TRENDS

TOTAL BEARING AND NON-BEARING ACREAGE OF PRINCIPAL CROPS*	1965	1970	1974	1975	1976	1976 Loss or Gain
Apples	7,832	5,276	3,171	2,828	2,178	- 650
Cherries	2,522	1,942	1,229	1,085	912	- 173
Pears	5,819	4,202	1,974	1,855	1,649	- 206
Grapes	3,369	2,694	2,437	2,394	2,240	- 154
Prunes	28,769	19,408	9,934	8,370	5,805	-2,565
Walnuts, English	7,501	5,498	4,049	3,746	2,984	- 762
Misc. Tree Crops Apples, Peaches, Black Walnut and Other	919	706	524	493	509	+ 16
<b>TOTAL ACREAGE OF ALL TREES AND VINES</b>	<b>56,731</b>	<b>39,726</b>	<b>23,318</b>	<b>20,771</b>	<b>16,277</b>	<b>-4,494</b>
Strawberries	287	310	373	362	350	
New Plantings of Trees and Vines	289	80	109	26	62	

\* Excludes Bushberries and Prickly Pears

1976

		<u>Non-Bearing</u>	<u>Bearing</u>
Apples	N Co	14	1,395
	S Co	44	725
	Total	58	2,120
Cherries, Bing	N Co	37	184
	S Co	31	317
	Total	68	501
Cherries, Royal Ann	N Co	8	79
	S Co	1	173
	Total	9	252
Cherries, All	N Co	51	288
	S Co	35	538
	Total	86	826
Grapes	N Co	64	700
	S Co	21	1,455
	Total	85	2,155
Pears, Bartlett	N Co	37	782
	S Co	28	494
	Total	65	1,256
Pears, All	N Co	84	1,043
	S Co	28	494
	Total	112	1,537
Prunes, French	N Co	19	1,913
	S Co	99	3,539
	Total	118	5,452
Prunes, Imperial	N Co	0	19
	S Co	2	95
	Total	2	114
Prunes, Sugar	N Co	0	14
	S Co	0	122
	Total	0	136
Prunes, All	N Co	18	1,945
	S Co	102	3,740
	Total	120	5,685
Walnuts	N Co	35	1,299
	S Co	49	1,601
	Total	84	2,900

		<u>Non-Bearing</u>	<u>Bearing</u>
TOTALS OF ABOVE	North County	266	6,670
	South County	279	8,553

\* Town of Coyote is used as the dividing point between North County and South County.



1977

DOCUMENTS  
STACKS

# County of Santa Clara

## Agricultural Crop Report

### 1977

LIBRARY USE ONLY

LIBRARY USE ONLY

UNIVERSITY OF CALIFORNIA  
DAVIS  
JUN 12 1978  
GOVT. DOCS. - LIBRARY

County of Santa Clara  
California

March 10, 1978

TO: RICHARD ROMINGER, DIRECTOR, CALIFORNIA DEPARTMENT OF FOOD  
AND AGRICULTURE AND THE HONORABLE BOARD OF SUPERVISORS OF  
THE COUNTY OF SANTA CLARA:

RODNEY DIRIDON, CHAIRPERSON  
DAN MC CORQUODALE SIG SANCHEZ  
DOMINIC L. CORTESE GERALDINE STEINBERG

AND

MR. WILLIAM SIEGAL, COUNTY EXECUTIVE

In accordance with the provisions of Section 2279 of the California Agricultural Code, I am pleased to submit this 1977 Annual Agricultural Crop Report of the acreage, production and valuation of the agricultural crops and products produced in the County of Santa Clara.

It must be emphasized that this report reflects a gross return and in no way represents the actual profit to the producer.

I wish to express my sincere appreciation for the cooperation and assistance of all individuals and organizations who so willingly cooperated with this department in contributing the information necessary to make this report possible.

To all members of my staff, I express my sincere thanks for their diligent and conscientious effort in obtaining and compiling the information for this report.

Respectfully submitted,

  
C.O. HOWE  
AGRICULTURAL COMMISSIONER

COH:dd

PERSONNEL

SAN JOSE OFFICE

C. O. HOWE, AGRICULTURAL COMMISSIONER

GORDON G. SPENCER, ASSISTANT AGRICULTURAL COMMISSIONER

DEPUTY AGRICULTURAL COMMISSIONERS

Roger B. Bibb                      Martial Cottle, Acting  
Eric C. Winkler

AGRICULTURAL INSPECTORS

Jim Ashikawa  
Doreen Bass  
Stan Caplan  
John Castro  
Joe Ferrari  
Lorna Galli  
Steve Gilmore

Mark Guerra  
Dave Haskell  
Raul Perez  
Donald W. Schamberger  
Konrad Slaughter  
Kermit Winn  
Larry Yasasaki

Kathy Strickler, Office Assistant

Debbie Dionne and Sandra Gauny, Clerical

SAN MARTIN OFFICE

DEPUTY AGRICULTURAL COMMISSIONER

James Jones, Acting

AGRICULTURAL INSPECTORS

Tom Auser  
Al Aubrey  
John Ballard

Larry DellaBitta  
Mike Norton

Margaret Heeter, Clerical



TABLE OF CONTENTS

	<u>PAGE</u>
Fruit and Nuts	1
Bushberries and Strawberries	1
Vegetable Crops	1
Seed Crops	3
Field Crops	3
Nursery Products - Cut Flowers	4
Nursery Products - Nursery Stock	4
Apiary Products	5
Livestock and Poultry	5
Livestock and Poultry Products	6
Inventories of Livestock and Poultry	6
Comparative Figures of Agricultural Values	7
Acreage Trend of Fruit and Nut Crops	8.
Comparative Acreages of Major Fruit and Nut Crops of North County and South County	9

SANTA CLARA COUNTY  
DEPARTMENT OF AGRICULTURE

FRUITS AND NUTS

ITEM	YEAR	HARVESTED		PRODUCTION		VALUE	
		ACREAGE	PER ACRE	TOTAL	UNIT	PER UNIT	TOTAL
Apricots	1977	1,955	3.97	7,760	Ton	\$ 295.	\$ 2,289,000
	1976	2,120	4.10	8,690	Ton	290.	2,520,000
Cherries	1977	874	1.66	1,450	Ton	790.	1,146,000
	1976	825	3.60	2,970	Ton	615.	1,827,000
Grapes	1977	2,186	2.46	5,380	Ton	425.	2,286,000
	1976	2,155	3.30	7,110	Ton	215.	1,529,000
Pears	1977	1,513	9.50	14,370	Ton	119.	1,711,000
	1976	1,537	9.00	13,800	Ton	110.	1,511,000
Prunes	1977	5,189	1.14	5,910	Ton	500.	2,955,000
	1976	5,685	1.06	6,030	Ton	400	2,412,000
Walnuts	1977	2,816	0.50	1,405	Ton	760.	1,068,000
	1976	2,900	0.40	1,160	Ton	650.	754,000
Miscellaneous Fruit, Nuts & Prickly Pears	1977	300					660,000
	1976	340					700,000
TOTALS	1977	14,833					12,114,000
	1976	15,562					11,260,000

BUSHBERRIES AND STRAWBERRIES

ITEM	YEAR	ACREAGE	PER ACRE	TOTAL	UNIT	PER UNIT	TOTAL
Bushberries	1977	7	4.00	28	Ton	\$ 310.	\$ 8,680
	1976	10	4.00	45	Ton	320.	12,800
Strawberries	1977	290	15.50	4,500	Ton	560.	2,520,000
	1976	350	19.50	6,820	Ton	630.	4,297,000
TOTALS	1977	297					2,528,680
	1976	360					4,309,800

VEGETABLE CROPS

ITEM	YEAR	ACREAGE	PER ACRE	TOTAL	UNIT	PER UNIT	TOTAL
Anise	1977	10.	10.00	100.	Ton	140.	14,000
	1976	10.	8.00	80.	Ton	175.	14,000
Beans, Snap	1977	70.	4.50	315.	Ton	500.	158,000
	1976	50.	4.50	225.	Ton	445.	100,000

SANTA CLARA COUNTY  
DEPARTMENT OF AGRICULTURE

VEGETABLE CROPS - CONTINUED

ITEM	YEAR	PRODUCTION		VALUE			
		HARVESTED ACREAGE	PER ACRE	TOTAL	UNIT	PER UNIT	TOTAL
Cabbage	1977	60	12.50	750	Ton	130.	\$ 97,500
	1976	90	10.00	900	Ton	110.	99,000
Cauliflower	1977	80	4.50	360	Ton	240.	86,400
	1976	60	6.00	360	Ton	190.	68,400
Celery	1977	80	20.60	1,650	Ton	140.	231,000
Chinese Vegetables	1977	750	14.25	10,690	Ton	140.	1,497,000
	1976	800	14.00	11,200	Ton	120.	1,344,000
Corn	1977	145	5.00	725	Ton	160.	116,000
	1976	260	5.00	1,300	Ton	170.	221,000
Cucumbers	1977	1,300	14.00	18,200	Ton	135.	2,457,000
	1976	1,350	15.50	20,900	Ton	130.	2,717,000
Endive	1977	20	7.50	150	Ton	240.	36,000
	1976	30	7.00	210	Ton	145.	30,450
Garlic	1977	470	5.00	2,350	Ton	460.	1,081,000
	1976	650	5.70	3,700	Ton	370.	1,369,000
Lettuce, Head	1977	1,000	11.50	11,500	Ton	140.	1,610,000
	1976	900	9.00	8,100	Ton	155.	1,256,000
Leaf	1977	250	6.50	1,620	Ton	240.	389,000
	1976	400	5.50	2,200	Ton	265.	583,000
Romaine	1977	85	11.25	955	Ton	120.	115,000
	1976	80	17.00	1,360	Ton	85.	116,000
Mushrooms	1977	70	95.00	6,650	Ton	1,600.	10,640,000
	1976	70	87.00	6,090	Ton	1,400.	8,526,000
Mustard Greens	1977	80	5.50	440	Ton	150.	66,000
	1976	140	4.00	560	Ton	275.	154,000
Onions	1977	400	20.00	8,000	Ton	90.	720,000
	1976	300	18.50	5,550	Ton	95.	527,000
Peppers, Bell	1977	1,200	10.80	13,000	Ton	180.	2,340,000
	1976	800	9.50	7,600	Ton	170.	1,292,000
Peppers, Chili & Wax	1977	450	8.10	3,650	Ton	400.	1,460,000
	1976	400	7.50	3,000	Ton	350.	1,050,000
Spinach	1977	80	6.90	552	Ton	280.	155,000
	1976	80	7.00	560	Ton	340.	190,000
Squash	1977	85	9.00	765	Ton	220.	168,000
	1976	300	7.50	2,250	Ton	190.	428,000

SANTA CLARA COUNTY  
DEPARTMENT OF AGRICULTURE

VEGETABLE CROPS - CONTINUED

ITEM	YEAR	PRODUCTION			UNIT	VALUE	
		HARVESTED ACREAGE	PER ACRE	TOTAL		PER UNIT	TOTAL
Tomatoes	1977	115	14.0	1,610	Ton	\$ 350.	\$ 567,500
	1976	110	13.5	1,485	Ton	350.	524,250
Processed	1977	7,500	27.0	202,000	Ton	55.	11,110,000
	1976	7,100	17.5	124,000	Ton	47.	5,827,000
Cherry	1977	25	21.0	525	Ton	500.	262,500
	1976	20	22.0	440	Ton	250.	110,000
Misc. vegetables <u>1/</u>	1977	500					1,000,000
	1976	1,200					2,400,000
<b>TOTALS</b>	<b>1977</b>	<b>14,915</b>					<b>25,417,500</b>
	<b>1976</b>	<b>16,210</b>					<b>17,271,250</b>

1/ Not reported separately to avoid disclosure of confidential business data.

SEED CROPS

CROP	YEAR	HARVESTED ACREAGE	PRODUCTION TONS	TOTAL
Flower & Vegetable Seed	1977	225	275	\$ 1,125
	1976	200	100	200

FIELD CROPS

ITEM	YEAR	PRODUCTION			UNIT	VALUE	
		HARVESTED ACREAGE	PER ACRE	TOTAL		PER UNIT	TOTAL
Barley	1977	1,410	1.02	1,440	Ton	\$ 81.	\$ 116,640
	1976	170	.57	99	Ton	96.	9,504
Hay, Alfalfa	1977	324	3.24	1,052	Ton	58.	61,016
	1976	255	5.10	1,300	Ton	89.	115,650
Grain	1977	7,350	0.95	6,980	Ton	55.	383,900
	1976	3,770	0.52	1,940	Ton	70.	135,800
Pasture & Range	1977	3,500			Acre	31.	108,500
	1976	3,500			Acre	31.	108,500
Pasture & Range	1977	1,500			Acre	270.	405,000
	1976	1,500			Acre	200.	300,000
Range	1977	210,000			Acre	2.	420,000
	1976	210,000			Acre	2.	420,000
Sugar Beets	1977	1,298	31.00	40,200	Ton	22.	884,400
	1976	2,140	28.00	60,000	Ton	20.	1,200,000
<b>TOTALS</b>	<b>1977</b>	<b>235,264</b>					<b>2,317,010</b>
	<b>1976</b>	<b>231,345</b>					<b>2,259,500</b>

DELAWARE COUNTY  
DEPARTMENT OF AGRICULTURE

NURSERY PRODUCTS - CUT FLOWERS

YEAR	HOUSE SQ. FT.	FIELD ACRES	SOLD BY PRODUCERS	UNIT	VALUE	
					PER UNIT	TOTAL
1977		34	7,100,000	Bloom	\$ .070	\$ 497,000
1976		40	6,400,000	Bloom	.055	452,000
1977	3,400,000		61,334,000	Bloom	.075	4,675,000
1976	3,100,000		64,476,000	Bloom	.085	5,480,000
1977	350,000		814,000	Bunch	1.35	1,094,000
1976	241,000		627,000	Bunch	1.40	878,000
1977	10,200,000		30,784,000	Bloom	.23	7,051,000
1976	7,072,000		21,214,000	Bloom	.18	3,816,000
	13,107,000		8,520,000	Bunch	.90	7,668,000
	10,441,000					18,569,000
1977	12,437,000		37,311,000	Bloom	.23	8,581,000
1976	6,388,000		19,764,000	Bloom	.18	3,555,000
	9,453,000		6,167,000	Bunch	1.05	6,475,000
	28,513,000					18,615,000
1977	296,000		3,572,000	Bloom	.12	429,000
1976	341,000		4,340,000	Bloom	.12	521,000
1977	22,000		675,000	Bloom	.07	47,250
1976	36,000		993,000	Bloom	.075	74,475
1977						93,000
1976						93,000
TOTALS						25,414,400
						26,122,000

Includes: Acacia, Eucalyptus, Stephanotis, Yarrow, Gypsophila, Iris, Statice, etc.

NURSERY PRODUCTS - NURSERY STOCK

YEAR	PRODUCTION AREA		QUANTITY SOLD BY PRODUCERS	UNIT	VALUE	
	HOUSE SQ. FT.	FIELD ACRES			PER UNIT	TOTAL
1977	178,000	13.0	495,000	Flats	Various	\$ 690,000
1976	125,000	10.0	342,000	Flats	Various	601,000
1977		207.0	13,000	Tree	10.25	133,000
1976		275.0	28,000	Tree	9.10	255,000
1977	191,000	97.0	931,000	Plant	Various	3,041,000
1976	105,000	100.0	815,000	Plant	Various	3,174,000
1977	1,198,525	12.0	446,000	Plant	Various	2,078,000
1976	1,194,000	21.0	6,332,000	Plant	Various	1,810,000
TOTALS						6,142,000
						5,840,000

Includes: Solis, Decoratives, Propagative materials, Vegetable plants and Perennials

SANTA CLARA COUNTY  
DEPARTMENT OF AGRICULTURE

APIARY PRODUCTS

ITEM	YEAR	PRODUCTION	UNIT	VALUE	
				PER UNIT	TOTAL
Honey	1977	60,000	Lbs.	\$ .45	\$ 27,000
	1976	100,000	Lbs.	.40	40,000
Bees Wax	1977	1,000	Lbs.	1.50	1,500
	1976	2,000	Lbs.	1.10	2,200
TOTALS	1977				28,700
	1976				42,200

LIVESTOCK AND POULTRY

ITEM <sup>1/</sup>	YEAR	NUMBER OF HEAD	PRODUCTION	UNIT	VALUE	
			TOTAL LIVENEIGHT		PER UNIT	TOTAL
Cattle & Calves	1977	15,421	73,000	Cwt.	\$ 39.	\$ 2,847,300
	1976	17,900	93,275	Cwt.	36.	3,378,000
Breeding Stock	1977	215		Ea.	175.	37,625
	1976	775		Ea.	415.	321,125
Sheep & Lambs	1977	910	800	Cwt.	48.	38,400
	1976	850	820	Cwt.	51.	41,820
Hogs & Pigs	1977	515	1,010	Cwt.	62.	62,620
	1976	515	370	Cwt.	40.	14,800
Chickens	1977	355,000	1,420,000	Lbs.	0.08	113,600
	1976	355,000	1,450,000	Lbs.	0.075	110,000
TOTALS	1977	372,051				3,104,410
	1976	355,040				3,847,000

<sup>1/</sup> Livestock figures are based on average weight and average selling price of all animals. Figures show only local net weight gain of animals originally purchased from out of County.

SANTA CLARA COUNTY  
DEPARTMENT OF AGRICULTURE

LIVESTOCK AND POULTRY

ITEM	YEAR	QUANTITY	UNIT	VALUE PER UNIT	TOTAL
Market	1977	714,000	Cwt.	\$ 9.74	\$ 7,344,000
	1978	650,000	Cwt.	9.20	7,896,000
Manufacturing	1977	None	Lbs.	None	None
	1978	3,500	Cwt.	7.70	35,000
Eggs	1977	5,000	Lbs.	.50	2,500
	1978	7,500	Lbs.	.70	5,250
Ducks	1977	12,510,000	Doz.	.44	5,755,000
	1978	11,310,000	Doz.	.55	7,320,000
TOTAL	1977				13,101,500
	1978				15,256,250

Values are market and farm retail rates.

INVENTORIES OF LIVESTOCK AND POULTRY  
(In Number of Heads)

ITEM	January 1, 1977	January 1, 1978
Cows & Heifers that have calved	7,240	5,027
Cattle and Calves	14,600	17,482
	21,840	22,509
Sheep and Lambs	2,010	1,148
Pigs and Pigs	275	210
Chickens - Pullets of Laying Age	500,000	710,000

SANTA CLARA COUNTY  
DEPARTMENT

CULTURE

COMPARATIVE FIGURES OF AGRICULTURAL VALUES

	<u>1960</u>	<u>1970</u>	<u>1975</u>	<u>1976</u>	<u>1977</u>
Bearing Acres Fruits, Nuts, All Berries	64,453	38,614	20,756	15,922	15,130
Vegetable Acreage	14,220	15,615	15,617	15,250	14,925
Fruit, Nut, Berry Crops	\$ 49,451,475	\$ 16,060,600	\$ 18,995,500	\$ 15,569,800	\$ 14,642,680
Vegetable Crops	8,624,480	13,869,700	30,818,700	27,718,800	36,048,900
Livestock, Poultry and Products	17,050,595	16,281,550	17,122,400	18,603,250	16,205,900
Field Crops and Apiary	3,053,975	2,037,300	4,411,500	2,796,100	2,345,800
Nursery Stock, Cut Flowers and Seed	13,122,985	17,287,200	31,746,700	32,659,500	32,035,200
<b>TOTALS</b>	<b>\$ 91,303,510.</b>	<b>\$ 65,536,350.</b>	<b>\$ 103,034,800.</b>	<b>\$ 97,347,450.</b>	<b>\$ 101,278,480.</b>



SANTA CLARA COUNTY  
DEPARTMENT OF AGRICULTURE

ACREAGE TRENDS

TOTAL BEARING AND NON- BEARING ACREAGE OF PRINCIPAL CROPS 1/	<u>1950</u>	<u>1960</u>	<u>1970</u>	<u>1976</u>	<u>1977</u>	<u>1977 LOSS OR GAIN</u>
Apples	16,511	12,096	5,276	2,178	1,990	- 188
Cherries	3,544	3,994	1,942	912	1,156	+ 244
Pears	7,160	6,912	4,202	1,649	1,642	- 7
Grapes	5,626	3,859	2,694	2,240	2,212	- 28
Prunes	47,708	33,940	19,408	5,805	5,297	- 508
Walnuts, English	9,619	8,918	5,498	2,984	2,884	- 100
Misc. Tree Crops (Apples, Peaches, Plums, Black Walnuts and Other)		578	706	509	449	- 60
TOTAL ACREAGE OF ALL TREES AND VINES		70,297	39,726	16,277	15,631	- 647
Strawberries	1,947	1,480	330	350	290	
New Plantings of Trees and Vines		1,025	80	62	239	

1/ Excludes bushberries and Prickly Pears.

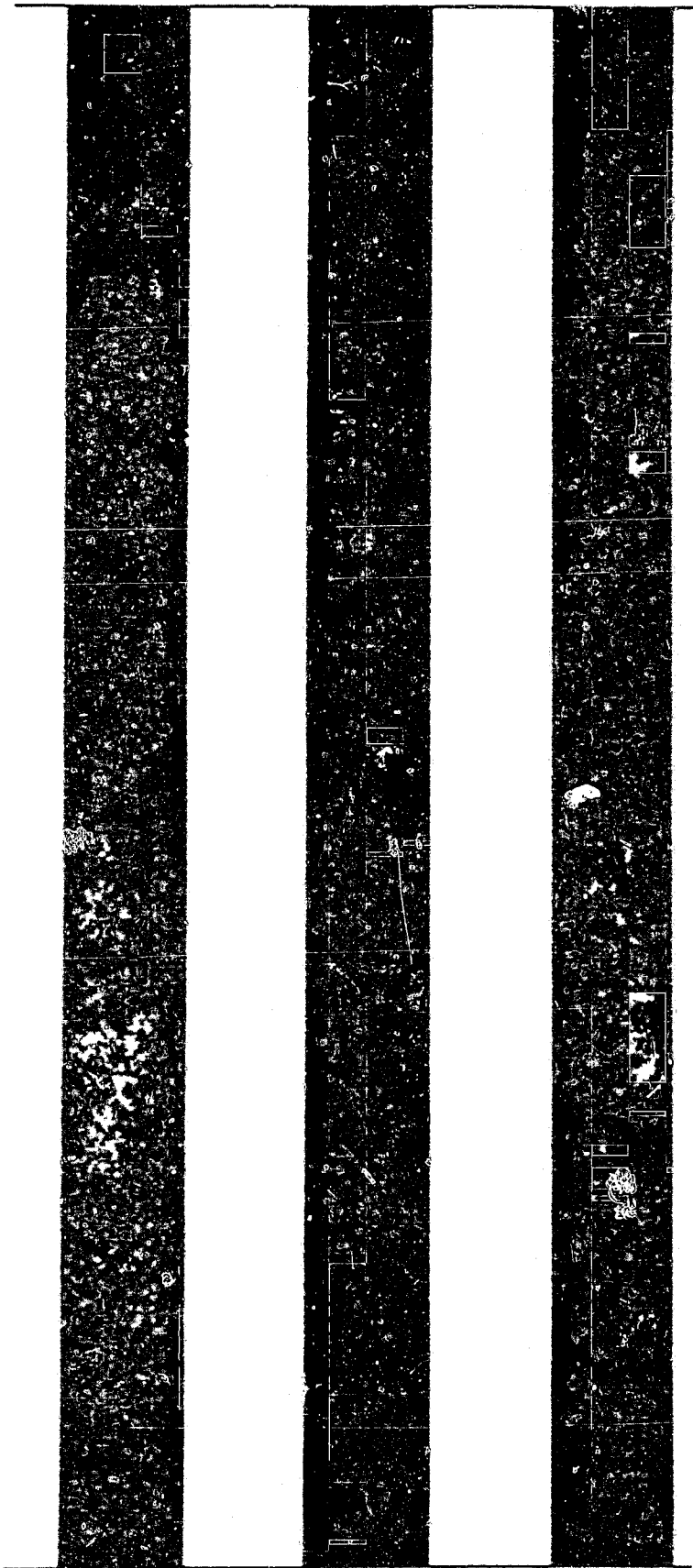
SANTA CLARA COUNTY  
DEPARTMENT OF AGRICULTURE

ACREAGE OF MAJOR FRUIT AND NUT CROPS  
NORTH COUNTY VS. SOUTH COUNTY

		<u>Non-Bearing</u>	<u>Bearing</u>
Apricots	N Co	17	1,510
	S Co	18	445
	Total	35	1,955
Cherries, Bing	N Co	21	207
	S Co	239	316
	Total	260	524
Cherries, Royal Ann	N Co	2	101
	S Co	1	173
	Total	3	274
Cherries, All	N Co	27	337
	S Co	255	537
	Total	282	874
Grapes	N Co	15	733
	S Co	8	1,453
	Total	23	2,186
Pears, Bartlett	N Co	55	673
	S Co	27	542
	Total	82	1,215
Pears, All	N Co	101	972
	S Co	27	541
	Total	128	1,513
Prunes, French	N Co	19	1,189
	S Co	87	3,757
	Total	106	4,946
Prunes, Imperial	N Co	0	11
	S Co	0	81
	Total	0	92
Prunes, Sugar	N Co	0	10
	S Co	0	142
	Total	0	152
Prunes, All	N Co	19	1,200
	S Co	87	3,981
	Total	106	5,189
Walnuts	N Co	25	1,129
	S Co	43	1,687
	Total	68	2,816

		<u>Non-Bearing</u>	<u>Bearing</u>
TOTALS OF ABOVE	North County	207	5,889
	South County	441	8,644

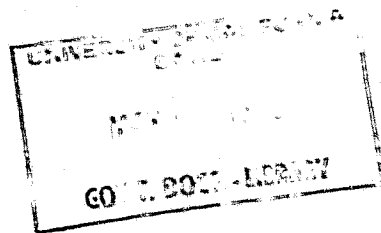
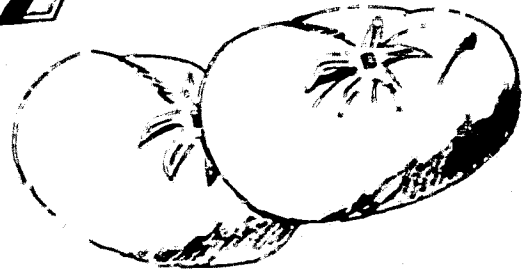
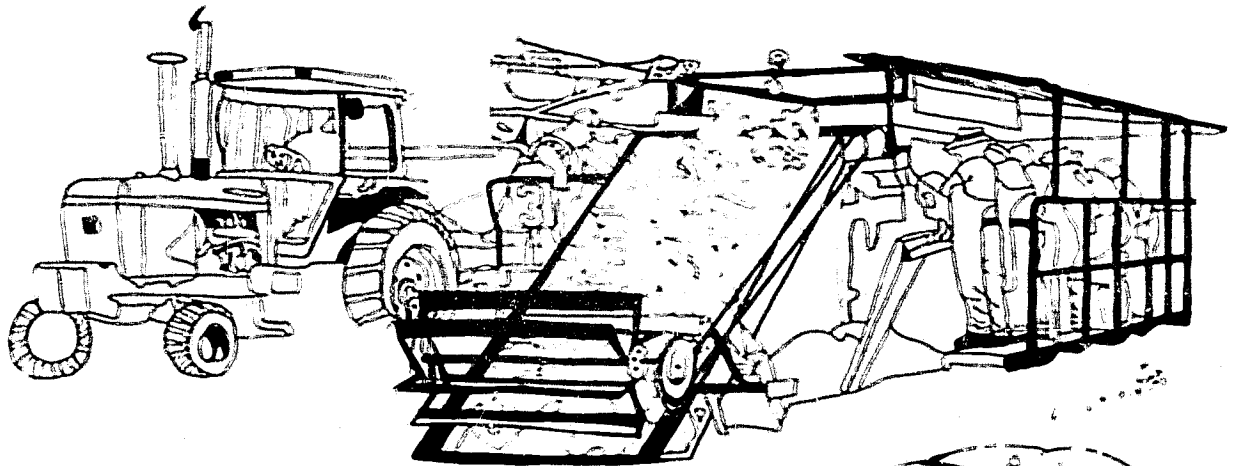
\* Town of Coyote is used as the dividing point between North County and South County.



1978

# Agricultural Crop Report 1978

County of Santa Clara



County of Santa Clara  
California

March 1, 1979

TO: RICHARD ROMINGER, DIRECTOR, CALIFORNIA DEPARTMENT OF FOOD  
AND AGRICULTURE AND THE HONORABLE BOARD OF SUPERVISORS OF  
THE COUNTY OF SANTA CLARA:

DOMINIC L. CORTESE, CHAIRPERSON

DAN MC CORQUODALE  
RODNEY DIRIDON

GERALDINE STEINBERG  
SUSANNE WILSON

AND

MR. WILLIAM SIEGEL, COUNTY EXECUTIVE

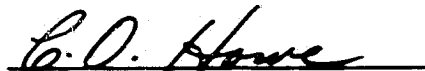
In accordance with the provisions of Section 2279 of the California Agricultural Code, I am pleased to submit this 1978 Annual Agricultural Crop Report of the acreage, production and valuation of the agricultural crops and products produced in the County of Santa Clara.

It must be emphasized that this report reflects a gross return and in no way represents the actual profit to the producer.

I wish to express my sincere appreciation for the cooperation and assistance of all individuals and organizations who so willingly cooperated with this department in contributing the information necessary to make this report possible.

To all members of my staff, I express my sincere thanks for their diligent and conscientious effort in obtaining and compiling the information for this report.

Respectfully submitted,

  
C. O. Howe  
Agricultural Commissioner

COH:ji

**P E R S O N N E L**

**SAN JOSE OFFICE**

**C. O. HOWE, AGRICULTURAL COMMISSIONER**

**GORDON G. SPENCER, ASSISTANT AGRICULTURAL COMMISSIONER**

**DEPUTY AGRICULTURAL COMMISSIONERS**

**Roger B. Bibb                      Martial Cottle  
Eric C. Winkler**

**AGRICULTURAL INSPECTORS**

<b>Jim Ashikawa</b>	<b>Mark Guerra</b>
<b>Doreen Bass</b>	<b>Raul Perez</b>
<b>Steve Burton</b>	<b>Sandy Ploetz</b>
<b>Stan Caplan</b>	<b>Donald W. Schamberger</b>
<b>John Castro</b>	<b>Konrad Slaughter</b>
<b>Joe Ferrari</b>	<b>Kermit Winn</b>
<b>Steve Gilmore</b>	<b>Larry Yamasaki</b>

**Kathryn Bacon, Office Assistant  
Debbie Dionne and Judy Inman, Clerical**

**MORGAN HILL OFFICE**

**AGRICULTURAL INSPECTORS**

<b>Tom Auser</b>	<b>Larry DellaBitta</b>
<b>Al Awbrey</b>	<b>Jim Jones</b>
<b>John Ballard</b>	

**Margaret Heeter, Clerical**

**Cover illustration by Robert Worthington II**

TABLE OF CONTENTS

	<u>PAGE</u>
Fruit and Nuts	1
Bushberries and Strawberries	1
Vegetable Crops	1
Seed Crops	3
Field Crops	3
Nursery Products - Cut Flowers	4
Nursery Products - Nursery Stock	4
Apiary Products	5
Livestock and Poultry	5
Livestock and Poultry Products	6
Inventories of Livestock and Poultry	6
Comparative Figures of Agricultural Values	7
Acreage Trend of Fruit and Nut Crops	8
Comparative Acreages of Major Fruit and Nut Crops of North County and South County	9

SANTA CLARA COUNTY  
DEPARTMENT OF AGRICULTURE

FRUITS AND NUTS

ITEM	YEAR	HARVESTED		PRODUCTION		VALUE	
		ACREAGE	PER ACRE	TOTAL	UNIT	PER UNIT	TOTAL
Apricots	1978	1,676	3.02	5,060	Ton	\$ 350.	\$ 1,771,000
	1977	1,955	3.97	7,760	Ton	295.	2,289,000
Cherries	1978	855	0.50	430	Ton	1,170.	503,000
	1977	874	1.66	1,450	Ton	790.	1,146,000
Grapes	1978	2,072	2.66	5,510	Ton	535.	2,948,000
	1977	2,186	2.46	5,380	Ton	425.	2,286,000
Kiwi	1978	15	1.00	15	Ton	280.	4,200
Pears	1978	1,284	6.16	7,910	Ton	186.	1,471,000
	1977	1,513	9.50	14,370	Ton	119.	1,710,000
Prunes	1978	4,439	0.60	2,665	Ton	625.	1,666,000
	1977	5,189	1.14	5,910	Ton	500.	2,955,000
Walnuts	1978	2,504	0.43	1,075	Ton	1,380.	1,484,000
	1977	2,816	0.50	1,405	Ton	760.	1,068,000
Miscellaneous Fruits, Nuts & Prickly Pears	1978	266					500,000
	1977	300					660,000
TOTALS	1978	13,111					10,347,200
	1977	14,833					12,114,000

BUSHBERRIES AND STRAWBERRIES

ITEM	YEAR	ACREAGE	PER ACRE	TOTAL	UNIT	PER UNIT	TOTAL
Bushberries	1978	4	4.00	16	Ton	\$2,100.	\$ 33,600
	1977	7	4.00	28	Ton	310.	8,680
Strawberries	1978	250	18.50	4,630	Ton	530.	2,454,000
	1977	290	15.50	4,500	Ton	560.	2,520,000
TOTALS	1978	254					2,487,600
	1977	297					2,528,680

VEGETABLE CROPS

ITEM	YEAR	ACREAGE	PER ACRE	TOTAL	UNIT	PER UNIT	TOTAL
Anise	1978	None	None	None	Ton	None	None
	1977	10	10.00	100	Ton	140.	14,000
Beans, Snap	1978	15	4.00	60	Ton	430.	25,800
	1977	70	4.50	315	Ton	500.	158,000



SANTA CLARA COUNTY  
DEPARTMENT OF AGRICULTURE

VEGETABLE CROPS - CONTINUED

ITEM	YEAR	HARVESTED ACREAGE	PRODUCTION		UNIT	VALUE	
			PER ACRE	TOTAL		PER UNIT	TOTAL
Cabbage	1978	35	12.5	440	Ton	\$ 160.	\$ 70,400
	1977	60	12.5	750	Ton	130.	97,500
Cauliflower	1978	190	7.0	1,330	Ton	220.	293,000
	1977	80	4.5	360	Ton	240.	86,400
Celery	1978	None	None	None	Ton	None	None
	1977	80	20.6	1,650	Ton	140.	231,000
Chinese Vegetables	1978	660	15.5	10,200	Ton	140.	1,428,000
	1977	750	14.25	10,690	Ton	140.	1,497,000
Corn	1978	120	5.0	600	Ton	180.	108,000
	1977	145	5.0	725	Ton	160.	116,000
Cucumbers	1978	1,150	14.0	16,100	Ton	160.	2,576,000
	1977	1,300	14.0	18,200	Ton	135.	2,457,000
Endive	1978	15	6.0	90	Ton	280.	25,200
	1977	20	7.5	150	Ton	240.	36,000
Garlic	1978	590	5.0	2,950	Ton	575.	1,696,000
	1977	470	5.0	2,350	Ton	460.	1,081,000
Lettuce, Head	1978	775	13.0	10,000	Ton	150.	1,500,000
	1977	1,000	11.5	11,500	Ton	140.	1,610,000
Leaf	1978	410	6.0	2,460	Ton	320.	787,000
	1977	250	6.5	1,620	Ton	240.	389,000
Romaine	1978	70	9.0	630	Ton	180.	113,000
	1977	85	11.25	955	Ton	120.	115,000
Mushrooms	1978	80	87.0	6,960	Ton	1,760.	12,250,000
	1977	70	95.0	6,650	Ton	1,600.	10,640,000
Mustard Greens	1978	25	7.0	175	Ton	320.	56,000
	1977	80	5.5	440	Ton	150.	66,000
Onions	1978	300	19.0	5,700	Ton	140.	798,000
	1977	400	20.0	8,000	Ton	90.	720,000
Peppers, Bell	1978	1,150	9.0	10,400	Ton	185.	1,924,000
	1977	1,200	10.8	13,000	Ton	180.	2,340,000
Peppers, Chili & Wax	1978	400	9.0	3,600	Ton	390.	1,404,000
	1977	450	8.1	3,650	Ton	400.	1,460,000
Spinach	1978	125	6.0	750	Ton	340.	255,000
	1977	80	6.9	552	Ton	280.	155,000
Squash	1978	20	9.0	180	Ton	320.	57,600
	1977	85	9.0	765	Ton	220.	168,000

\*To Miscellaneous

SANTA CLARA COUNTY  
DEPARTMENT OF AGRICULTURE

VEGETABLE CROPS - CONTINUED

ITEM	YEAR	HARVESTED ACREAGE	PRODUCTION		UNIT	VALUE	
			PER ACRE	TOTAL		PER UNIT	TOTAL
Tomatoes	1978	50	16.0	800	Ton	\$ 240.	\$ 192,000
Fresh	1977	115	14.0	1,610	Ton	360.	580,000
Processed	1978	5,520	26.5	146,000	Ton	54.	7,884,000
	1977	7,500	27.0	202,000	Ton	55.	11,110,000
Cherry	1978	30	22.0	660	Ton	480.	317,000
	1977	25	21.0	525	Ton	500.	262,000
Misc. Vegetables 1/	1978	1,300					1,685,000
	1977	600					660,000
<b>TOTALS</b>	1978	13,030					35,445,000
	1977	14,925					36,048,900

1/ Not reported separately to avoid disclosure of confidential business data.

SEED CROPS

CROP	YEAR	HARVESTED ACREAGE	PRODUCTION TONS	TOTAL
Flower & Vegetable	1978	1,310	630	\$ 725,000
Seed	1977	625	275	479,000

FIELD CROPS

ITEM	YEAR	HARVESTED ACREAGE	PRODUCTION		UNIT	VALUE	
			PER ACRE	TOTAL		PER UNIT	TOTAL
Barley	1978	730	1.10	800	Ton	\$ 91.	\$ 73,000
	1977	1,412	1.09	1,540	Ton	81.	125,000
Hay, Alfalfa	1978	250	3.80	950	Ton	63.	60,000
	1977	324	3.34	1,082	Ton	58.	63,000
Grain	1978	6,240	1.70	10,600	Ton	41.	435,000
	1977	7,250	0.96	6,960	Ton	55.	383,000
Pasture & Range							
Improved	1978	3,500			Acre	35.	122,000
	1977	3,500			Acre	35.	122,000
Irrigated	1978	1,500			Acre	200.	300,000
	1977	1,500			Acre	200.	300,000
Range	1978	220,000			Acre	6.	1,320,000
	1977	220,000			Acre	2.	440,000
Sugar Beets	1978	615	30.60	18,800	Ton	25.	470,000
	1977	1,298	31.00	40,200	Ton	22.	884,000
<b>TOTALS</b>	1978	232,835					2,780,000
	1977	235,284					2,317,000

## SANTA CLARA COUNTY

## DEPARTMENT OF AGRICULTURE

## NURSERY PRODUCTS - CUT FLOWERS

	YEAR	HOUSE		FIELD		SOLD BY PRODUCERS	UNIT	VALUE	
		SQ. FT.	ACRES	ACRES	ACRES			PER UNIT	TOTAL
Aster	1978			26		5,460,000	Bloom	\$ .090	\$ 491,000
	1977			34		7,140,000	Bloom	.070	500,000
Carnations									
Standard	1978	3,489,000				62,802,000	Bloom	.080	5,024,000
	1977	3,463,000				62,334,000	Bloom	.075	4,675,000
Miniature	1978	506,000				1,128,000	Bunch	1.50	1,692,000
	1977	365,000				814,000	Bunch	1.35	1,099,000
Chrysanthemums	1978								
Standard		12,626,000				37,877,000	Bloom	.24	9,090,000
Other Types		8,604,000				25,812,000	Bloom	.17	4,388,000
Pompon		12,419,000				8,072,000	Bunch	.90	7,265,000
Total		33,649,000							20,743,000
Chrysanthemum	1977								
Standard		10,262,000				30,789,000	Bloom	.23	7,082,000
Other Types		7,072,000				21,214,000	Bloom	.18	3,819,000
Pompon		13,107,000				8,520,000	Bunch	.90	7,668,000
Total		30,441,000							18,569,000
Roses									
Standard	1978	301,000				3,948,000	Bloom	.16	632,000
	1977	296,000				3,572,000	Bloom	.12	429,000
Miniature	1978	23,000				693,000	Bloom	.11	76,200
	1977	22,000				675,000	Bloom	.07	47,200
Miscellaneous <sup>1/</sup>	1978								90,000
	1977								95,000
TOTALS	1978								28,748,200
	1977								25,414,200

<sup>1/</sup> Includes Acacia, Agapanthus, Daisy, Yarrow, Gypsophila, Iris, Statice, etc.

## NURSERY PRODUCTS - NURSERY STOCK

CROP	YEAR	PRODUCTION AREA		QUANTITY SOLD BY PRODUCERS	UNIT	VALUE	
		HOUSE SQ. FT.	FIELD ACRES			PER UNIT	TOTAL
Bedding Plants	1978	280,000	3.0	563,000	Flats	Various	\$ 1,064,000
	1977	178,000	13.0	495,000	Flats	Various	890,000
Christmas Trees	1978		169.0	20,400	Tree	10.60	216,000
	1977		207.0	13,000	Tree	10.25	133,000
Ornamental Trees, Roses & Shrubs	1978	64,800	135.0	967,000	Plant	Various	4,501,000
	1977	191,000	97.0	991,000	Plant	Various	3,041,000
Miscellaneous <sup>1/</sup>	1978	741,000	23.0	7,917,000	Plant	Various	3,100,000
	1977	1,198,625	12.0	5,944,000*	Plant	Various	2,078,000
TOTALS	1978						8,881,000
	1977						6,142,000

<sup>1/</sup> Includes indoor decoratives, Propagative materials, Vegetable plants and Herbaceous Perennials.

\* Correction

SANTA CLARA COUNTY  
DEPARTMENT OF AGRICULTURE

APIARY PRODUCTS

ITEM	YEAR	PRODUCTION	UNIT	VALUE PER UNIT	TOTAL
Honey	1978	180,000	Lbs.	\$ .50	\$90,000
	1977	60,000	Lbs.	.45	27,000
Bees Wax	1978	3,000	Lbs.	1.80	5,400
	1977	1,000	Lbs.	1.80	1,800
TOTALS	1978				95,400
	1977				28,800

LIVESTOCK AND POULTRY

ITEM 1/	YEAR	NUMBER OF HEAD	PRODUCTION TOTAL LIVELWEIGHT	UNIT	VALUE PER UNIT	TOTAL
Cattle & Calves	1978	12,100	61,100	Cwt.	\$ 50.	\$3,055,000
	1977	15,421	73,000	Cwt.	39.	2,847,000
Breeding Stock	1978	50		Ea.	280.	14,000
	1977	215		Ea.	175.	37,600
Sheep & Lambs	1978	1,210	665	Cwt.	92.	61,200
	1977	910	880	Cwt.	48.	42,200
Hogs & Pigs	1978	None	None	Cwt.	None	None
	1977	515	1,030	Cwt.	62.	64,000
Chickens	1978	335,000	1,420,000	Lbs.	0.065	92,300
	1977	355,000	1,420,000	Lbs.	0.08	113,600
TOTALS	1978	368,360				3,222,500
	1977	372,059				3,104,400

1/ Livestock figures are based on average weight and average selling price of all animals. Figures show only local net weight gain of animals originally purchased from out of County.

SANTA CLARA COUNTY  
DEPARTMENT OF AGRICULTURE

LIVESTOCK AND POULTRY

ITEM	YEAR	PRODUCTION	UNIT	VALUE PER UNIT	TOTAL
Milk	1978	750,000	Cwt.	\$10.26	\$ 7,695,000
Market	1977	754,000	Cwt.	9.74	7,344,000
Manufacturing	1978	6,000	Cwt.	8.48	50,900
	1977	None	Cwt.	None	None
Wool	1978	None	Lbs.	None	None
	1977	5,000	Lbs.	.50	2,500
Eggs, Chicken <u>1/</u>	1978	13,480,000	Doz.	.46	6,201,000
	1977	12,510,000	Doz.	.46	5,755,000
TOTALS	1978				13,946,900
	1977				13,101,500

1/ Includes market and farm retail eggs.

INVENTORIES OF LIVESTOCK AND POULTRY  
(In Number of Head)

ITEM	January 1, 1978	January 1, 1979
Milk Cows & Heifers that have calved	5,027	6,050
Other Cattle & Calves	<u>17,482</u>	<u>17,210</u>
Total	22,509	23,260
Sheep & Lambs	1,148	900
Hogs & Pigs	210	None
Hens & Pullets of Laying Age	710,000	617,000

SANTA CLARA COUNTY  
DEPARTMENT OF AGRICULTURE

COMPARATIVE FIGURES OF AGRICULTURAL VALUES

	<u>1960</u>	<u>1970</u>	<u>1975</u>	<u>1977</u>	<u>1978</u>
Bearing Acres Fruits, Nuts, All Berries	64,453	38,614	20,756	15,130	13,365
Vegetable Acreage	14,220	15,615	15,617	14,925	13,030
Fruit, Nut, Berry Crops	\$ 49,451,475	\$ 16,060,600	\$ 18,995,500	\$ 14,642,680	\$ 12,834,800
Vegetable Crops	8,624,480	13,869,700	30,818,700	36,048,900	35,445,000
Livestock, Poultry and Products	17,050,595	16,281,550	17,122,400	16,205,900	17,169,400
Field Crops and Apiary	3,053,975	2,037,300	4,411,500	2,345,800	2,875,400
Nursery Stock, Cut Flowers and Seed	13,122,985	17,287,200	31,746,700	32,035,200	38,354,200
<b>TOTALS</b>	<b>\$ 91,303,510</b>	<b>\$ 65,536,350</b>	<b>\$103,094,800</b>	<b>\$101,278,480</b>	<b>\$106,678,800</b>

SANTA CLARA COUNTY  
DEPARTMENT OF AGRICULTURE

ACREAGE TRENDS

TOTAL BEARING AND NON-  
BEARING ACREAGE OF  
PRINCIPAL CROPS <sup>1/</sup>

	<u>1950</u>	<u>1960</u>	<u>1970</u>	<u>1977</u>	<u>1978</u>	<u>1978 LOSS OR GAIN</u>
Apples	16,511	12,096	5,276	1,990	1,703	- 287
Cherries	3,544	3,994	1,942	1,156	1,133	- 23
Kiwis	0	0	0	0	15	+ 15
Pears	7,160	6,912	4,202	1,642	1,404	- 238
Grapes	6,626	3,859	2,694	2,212	2,083	- 129
Prunes	47,708	33,940	19,408	5,297	4,520	- 777
Walnuts, English	9,619	8,918	5,498	2,884	2,530	- 354
Misc. Tree Crops (Apples, Peaches, Plums, Black Walnuts and Other)		578	706	449	242	- 207
TOTAL ACREAGE OF ALL TREES AND VINES		70,297	39,726	15,630	13,630	-2,000
Strawberries	1,947	1,480	330	290	250	
New Plantings of Trees and Vines		1,025	80	239	7	

<sup>1/</sup> Excludes bushberries and Prickly Pears.

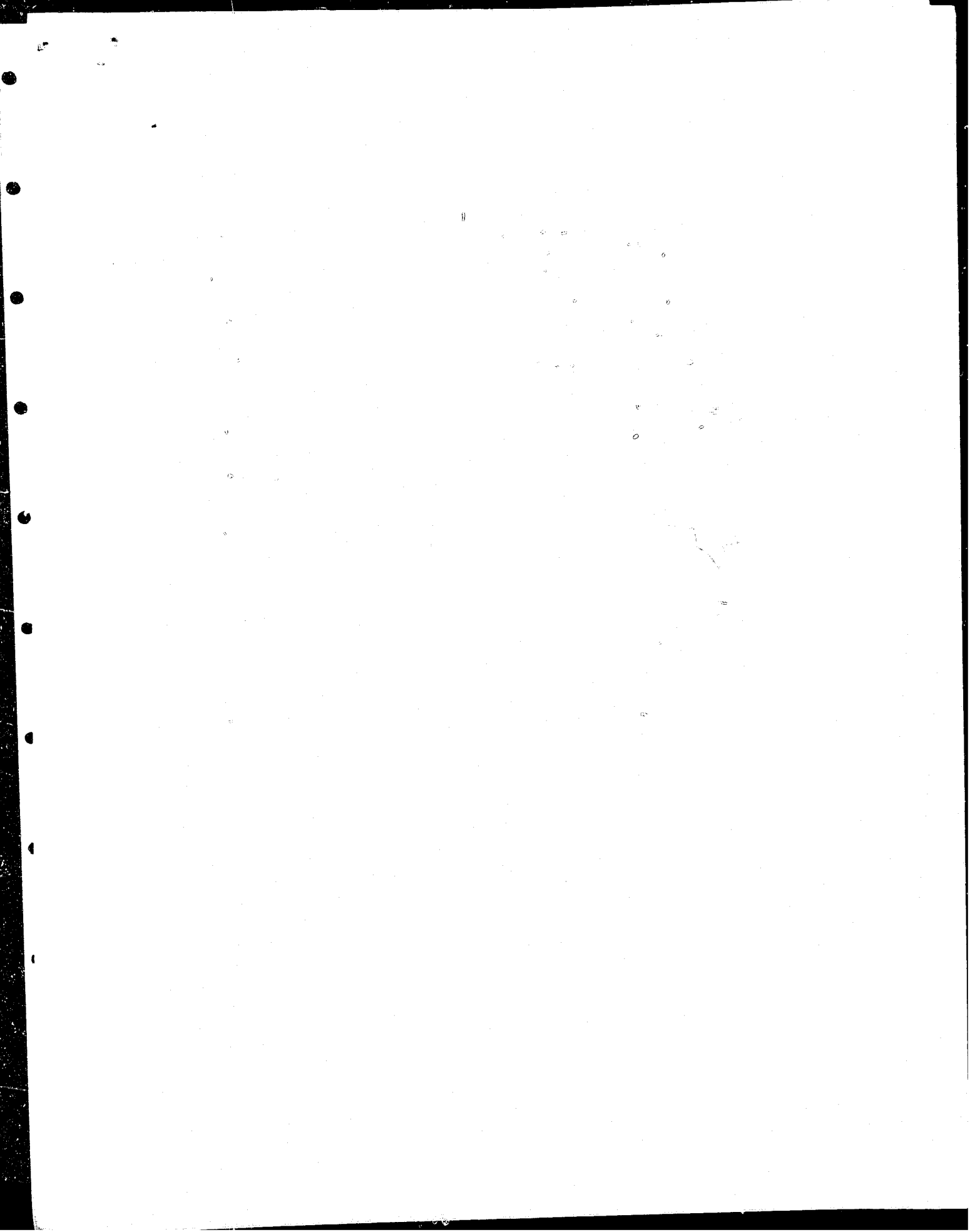
		<u>Non-Bearing</u>	<u>Bearing</u>
Apricots	N Co	14	1,254
	S Co	13	422
	Total	27	1,676
Cherries, Bing	N Co	19	199
	S Co	283	313
	Total	302	512
Cherries, Royal Ann	N Co	2	98
	S Co	1	171
	Total	3	269
Cherries, All	N Co	23	323
	S Co	255	332
	Total	278	855
Grapes	N Co	11	720
	S Co	0	1,352
	Total	11	2,072
Pears, Bartlett	N Co	48	576
	S Co	28	480
	Total	76	1,056
Pears, All	N Co	92	804
	S Co	28	480
	Total	120	1,284
Prunes, French	N Co	19	1,034
	S Co	60	3,193
	Total	79	4,227
Prunes, Imperial	N Co	0	6
	S Co	2	68
	Total	2	74
Prunes, Sugar	N Co	0	9
	S Co	0	128
	Total	0	137
Prunes, All	N Co	19	1,049
	S Co	62	3,390
	Total	81	4,439
Walnuts	N Co	15	835
	S Co	11	1,669
	Total	26	2,504

		<u>Non-Bearing</u>	<u>Bearing</u>
TOTALS OF ABOVE	North County	174	4,985
	South County	369	7,845

\* Town of Coyote is used as the dividing point between North County and South County.



1979



THE UNIVERSITY OF CHICAGO  
DEPARTMENT OF CHEMISTRY  
5301 SOUTH CAMPUS DRIVE  
CHICAGO, ILLINOIS 60637  
TEL: 773-936-3700  
FAX: 773-936-3701  
WWW: WWW.CHEM.UCHICAGO.EDU

County of Santa Clara  
California

March 3, 1980

TO: RICHARD ROMINGER, DIRECTOR, CALIFORNIA DEPARTMENT OF FOOD  
AND AGRICULTURE AND THE HONORABLE BOARD OF SUPERVISORS OF  
THE COUNTY OF SANTA CLARA:

DAN MC CORQUODALE, CHAIRPERSON

DOMINIC L. CORTESE  
RODNEY DIRIDON

GERALDINE STEINBERG  
SUSANNE WILSON

AND

MR. WILLIAM SIEGEL, COUNTY EXECUTIVE


In accordance with the provisions of Section 2279 of the  
California Agricultural Code, I am pleased to submit this 1979  
Annual Agricultural Crop Report of the acreage, production and  
valuation of the agricultural crops and products produced in the  
County of Santa Clara.

It must be emphasized that this report reflects a gross return  
and in no way represents the actual profit to the producer.

I wish to express my sincere appreciation for the cooperation  
and assistance of all individuals and organizations who so willingly  
cooperated with this department in contributing the information  
necessary to make this report possible.

To all members of my staff, I express my sincere thanks for  
their diligent and conscientious effort in obtaining and compiling  
the information for this report.

Respectfully submitted,

  
C.O. Howe  
Agricultural Commissioner

COH:lf

P E R S O N N E L

SAN JOSE OFFICE

C.O. HOWE, AGRICULTURAL COMMISSIONER

GORDON G. SPENCER, ASSISTANT AGRICULTURAL COMMISSIONER

DEPUTY AGRICULTURAL COMMISSIONERS

Roger B. Bibb                      Martial Cottle  
Eric C. Winkler

AGRICULTURAL INSPECTORS

Jim Ashikawa                      Steve Gilmour  
Doreen Bass                      Mark Guerra  
Steve Burton                      Raul Perez  
Stan Caplan                      Donald W. Schamberger  
John Castro                      Konrad Slaughter  
Joe Ferrari                      Kermit Winn  
Larry Yamasaki

Lori Ford, Office Assistant  
Debbie Dionne and Judy Inman, Clerical

MORGAN HILL OFFICE

AGRICULTURAL INSPECTORS

Tom Auser                      Larry DellaBitta  
Al Awbrey                      Jim Jones  
John Ballard

Margaret Heeter, Clerical

## TABLE OF CONTENTS

	<u>PAGE</u>
Fruit and Nuts	1
Bushberries and Strawberries	1
Vegetable Crops	1
Seed Crops	3
Field Crops	3
Nursery Products - Cut Flowers	4
Nursery Products - Nursery Stock	4
Apiary Products	5
Livestock and Poultry	5
Livestock and Poultry Products	6
Inventories of Livestock and Poultry	6
Comparative Figures of Agricultural Values	7
Leading Agricultural Products	7
Acreage Trend of Fruit and Nut Crops	8
Comparative Acreages of Major Fruit and Nut Crops of North County and South County	9

SANTA CLARA COUNTY  
DEPARTMENT OF AGRICULTURE

FRUITS AND NUTS

ITEM	YEAR	HARVESTED		PRODUCTION		VALUE	
		ACREAGE	PER ACRE	TOTAL	UNIT	PER UNIT	TOTAL
Apricots	1979	1,596	4.00	6,380	Ton	\$ 465.	\$ 2,967,000.
	1978	1,576	3.02	5,060	Ton	350.	1,771,000.
Cherries	1979	862	5.70	4,910	Ton	900.	4,419,000.
	1978	855	0.50	430	Ton	1,170.	503,000.
Grapes	1979	2,010	3.00	6,030	Ton	455.	2,744,000.
	1978	2,072	2.66	5,510	Ton	535.	2,948,000.
Kivi	1979	15	1.00	15	Ton	1,500.	22,500.
	1978	15	1.00	15	Ton	280.	4,200.
Pears	1979	1,155	8.60	9,930	Ton	165.	1,638,000.
	1978	1,284	6.16	7,910	Ton	186.	1,471,000.
Prunes	1979	3,989	1.00	3,990	Ton	780.	3,112,000.
	1978	4,439	0.60	2,665	Ton	625.	1,666,000.
Walnuts	1979	2,236	0.53	1,180	Ton	760.	897,000.
	1978	2,504	0.43	1,075	Ton	1,380.	1,484,000.
Miscellaneous	1979	265					950,000.
Fruit, Nuts & Prickly Pears	1978	266					500,000.
TOTALS	1979	12,128					16,749,500.
	1978	13,111					10,347,200.

BUSHBERRIES AND STRAWBERRIES

ITEM	YEAR	ACREAGE	PER ACRE	TOTAL	UNIT	PER UNIT	TOTAL
Bushberries	1979	6	3.50	21	Ton	\$ 2,090.	\$ 43,900.
	1978	4	4.00	16	Ton	2,100.	33,600.
Strawberries	1979	300	19.50	5,850	Ton	630.	3,686,000.
	1978	250	18.50	4,630	Ton	530.	2,454,000.
TOTALS	1979	306					3,729,900.
	1978	254					2,487,600.

VEGETABLE CROPS

ITEM	YEAR	ACREAGE	PER ACRE	TOTAL	UNIT	PER UNIT	TOTAL
Beans, Snap	1979	25	4.00	100	Ton	\$ 390.	\$ 39,000.
	1978	15	4.00	60	Ton	430.	25,800.

SANTA CLARA COUNTY  
DEPARTMENT OF AGRICULTURE

VEGETABLE CROPS - CONTINUED

ITEM	YEAR	HARVESTED		PRODUCTION		VALUE	
		ACREAGE	PER ACRE	TOTAL	UNIT	PER UNIT	TOTAL
Cabbage	1979	45	11.0	495	Ton	\$ 150.	\$ 74,200.
	1978	35	12.5	440	Ton	160.	70,400.
Cauliflower	1979	275	8.5	2,340	Ton	190.	445,000.
	1978	190	7.0	1,330	Ton	220.	293,000.
Chinese Vegetables	1979	650	15.0	9,750	Ton	150.	1,462,000.
	1978	660	15.5	10,200	Ton	140.	1,428,000.
Corn	1979	180	5.0	900	Ton	200.	180,000.
	1978	120	5.0	600	Ton	180.	108,000.
Cucumbers	1979	850	15.0	12,800	Ton	150.	1,920,000.
	1978	1,150	14.0	16,100	Ton	160.	2,576,000.
*Endive	1979	None	None	None	Ton	None	None
	1978	15	6.0	90	Ton	280.	25,200.
Garlic	1979	520	5.5	2,860	Ton	350.	1,001,000.
	1978	590	5.0	2,950	Ton	575.	1,696,000.
Lettuce, Head	1979	780	10.0	7,800	Ton	150.	1,170,000.
	1978	775	13.0	10,000	Ton	150.	1,500,000.
Leaf	1979	350	8.0	2,800	Ton	220.	616,000.
	1978	410	6.0	2,460	Ton	320.	787,000.
*Romaine	1979	None	None	None	Ton	None	None
	1978	70	9.0	630	Ton	180.	113,000.
Mushrooms	1979	93	83.0	7,720	Ton	1,880.	14,514,000.
	1978	80	87.0	6,960	Ton	1,760.	12,250,000.
Mustard Greens	1979	25	7.0	175	Ton	450.	78,800.
	1978	25	7.0	175	Ton	320.	56,000.
Onions	1979	380	18.0	6,840	Ton	130.	889,000.
	1978	300	19.0	5,700	Ton	140.	798,000.
Peppers, Bell	1979	1,450	9.5	13,800	Ton	190.	2,622,000.
	1978	1,150	9.0	10,400	Ton	185.	1,924,000.
Peppers, Chili & Wax	1979	420	6.5	2,730	Ton	440.	1,201,000.
	1978	400	9.0	3,600	Ton	390.	1,404,000.
Spinach	1979	130	5.5	715	Ton	340.	243,000.
	1978	125	6.0	750	Ton	340.	255,000.
Squash	1979	35	7.0	245	Ton	280.	68,600.
	1978	20	9.0	180	Ton	320.	57,600.

\* To Miscellaneous



## SANTA CLARA COUNTY

## DEPARTMENT OF AGRICULTURE

## VEGETABLE CROPS - CONTINUED

ITEM	YEAR	HARVESTED ACREAGE	PRODUCTION		UNIT	VALUE	
			PER ACRE	TOTAL		PER UNIT	TOTAL
Tomatoes Fresh	1979	110	17.5	1,920	Ton	\$ 285.	\$ 547,000.
	1978	50	16.0	800	Ton	240.	192,000.
Processed	1979	5,000	28.0	140,000	Ton	55.	7,700,000.
	1978	5,520	26.5	146,000	Ton	54.	7,884,000.
Cherry	1979	15	25.0	375	Ton	320.	120,000.
	1978	30	22.0	660	Ton	480.	317,000.
Misc. Vegetables <sup>1/</sup>	1979	1,500					2,850,000.
	1978	1,300					1,685,000.
TOTALS	1979	12,833					37,740,600.
	1978	13,030					35,445,000.

<sup>1/</sup> Not reported separately to avoid disclosure of confidential business data.

## SEED CROPS

CROP	YEAR	HARVESTED ACREAGE	PRODUCTION TONS	TOTAL
Flower & Vegetable Seed	1979	1,280	650	\$ 1,322,000.
	1978	1,310	630	725,000.

## FIELD CROPS

ITEM	YEAR	HARVESTED ACREAGE	PRODUCTION		UNIT	VALUE	
			PER ACRE	TOTAL		PER UNIT	TOTAL
Barley	1979	795	1.09	870	Ton	\$ 105.	\$ 91,400.
	1978	730	1.10	800	Ton	91.	73,000.
Hay, Alfalfa	1979	250	5.50	1,380	Ton	90.	124,000.
	1978	250	3.80	950	Ton	63.	60,000.
Hay, Grain	1979	3,520	1.70	5,980	Ton	54.	323,000.
	1978	6,240	1.70	10,600	Ton	41.	435,000.
Pasture & Range Improved	1979	3,500			Acre	35.	122,000.
	1978	3,500			Acre	35.	122,000.
Irrigated	1979	1,500			Acre	200.	300,000.
	1978	1,500			Acre	200.	300,000.
Range	1979	220,000			Acre	8.	1,760,000.
	1978	220,000			Acre	6.	1,320,000.
Sugar Beets	1979	980	31.00	30,400	Ton	27.	821,000.
	1978	615	30.60	18,800	Ton	25.	470,000.
TOTALS	1979	230,545					3,541,400.
	1978	232,835					2,780,000.

SANTA CLARA COUNTY  
DEPARTMENT OF AGRICULTURE

NURSERY PRODUCTS - CUT FLOWERS

	YEAR	AREA		SOLD BY PRODUCERS	UNIT	VALUE	
		HOUSE SQ. FT.	FIELD ACRES			PER UNIT	TOTAL
Asters	1979		26	5,460,000	Bloom	\$ .100	\$ 546,000.
	1978		26	5,460,000	Bloom	.090	491,000.
Carnations							
Standard	1979	3,430,000		61,740,000	Bloom	.085	5,248,000.
	1978	3,489,000		62,802,000	Bloom	.080	5,024,000.
Miniature	1979	514,000		1,130,000	Bunch	1.40	1,582,000.
	1978	506,000		1,128,000	Bunch	1.50	1,692,000.
Chrysanthemums	1979						
Standard		11,488,000		34,464,000	Bloom	.24	8,271,000.
Other Types		9,688,000		29,064,000	Bloom	.17	4,941,000.
Pompon		13,765,000		8,947,000	Bunch	.95	8,500,000.
Total		34,941,000					21,712,000.
Chrysanthemums	1978						
Standard		12,626,000		37,877,000	Bloom	.24	9,090,000.
Other Types		8,604,000		25,812,000	Bloom	.17	4,388,000.
Pompon		12,419,000		8,072,000	Bunch	.90	7,265,000.
Total		33,649,000					20,743,000.
Roses							
*Standard	1979		None	None	Bloom	None	None
	1978		301,000	3,948,000	Bloom	.16	632,000.
*Miniature	1979		None	None	Bloom	None	None
	1978		23,000	693,000	Bloom	.11	76,200.
Miscellaneous 1/	1979						665,000.
	1978						90,000.
TOTALS	1979						29,753,000.
	1978						28,748,200.

1/ Includes Agapanthus, Gypsophila, Iris, Roses, Statice, Yarrow, etc.

\* To Miscellaneous

NURSERY PRODUCTS - NURSERY STOCK

CROP	YEAR	PRODUCTION AREA		QUANTITY SOLD BY PRODUCERS	UNIT	VALUE	
		HOUSE SQ. FT.	FIELD ACRES			PER UNIT	TOTAL
Bedding Plants	1979	270,000	3.0	552,000	Flats	Various	\$ 1,158,000.
	1978	280,000	3.0	563,000	Flats	Various	1,064,000.
Christmas Trees	1979		166.0	19,600	Tree	13.60	267,000.
	1978		169.0	20,400	Tree	10.60	216,000.
Ornamental Trees,	1979	80,000	113.0	1,048,000	Plant	Various	5,217,000.
Roses & Shrubs	1978	64,800	135.0	967,000	Plant	Various	4,501,000.
Miscellaneous 1/	1979	685,000	23.0	1,412,000	Plant	Various	3,130,000.
	1978	741,000	23.0	7,917,000	Plant	Various	3,100,000.
TOTALS	1979						9,772,000.
	1978						8,881,000.

1/ Includes indoor decoratives, Propagative materials, Vegetable plants and Herbaceous Perennials.

SANTA CLARA COUNTY  
DEPARTMENT OF AGRICULTURE

APIARY PRODUCTS

ITEM	YEAR	PRODUCTION	UNIT	VALUE PER UNIT	TOTAL
HONEY	1979	176,000	Lbs.	\$ .65	\$ 114,000.
	1978	180,000	Lbs.	.50	90,000.
Bees Wax	1979	3,200	Lbs.	1.80	5,760.
	1978	3,000	Lbs.	1.80	5,400.
TOTALS	1979				119,760.
	1978				95,400.

LIVESTOCK AND POULTRY

ITEM 1/	YEAR	NUMBER OF HEAD	PRODUCTION TOTAL LIVEWEIGHT	UNIT	VALUE PER UNIT	TOTAL
Cattle & Calves	1979	18,000	87,500	Cwt.	\$ 60.	\$5,250,000.
	1978	12,100	61,100	Cwt.	50.	3,055,000.
Breeding Stock	1979	90		Ea.	620.	55,800.
	1978	50		Ea.	280.	14,000.
Sheep & Lambs	1979	1,400	1,060	Cwt.	70.	74,200.
	1978	1,210	665	Cwt.	92.	61,200.
Hogs & Pigs	1979	500	1,000	Cwt.	46.	46,000.
	1978	None	None	Cwt.	None	None
Chickens	1979	355,000	1,420,000	Lbs.	0.100	142,000.
	1978	335,000	1,420,000	Lbs.	0.065	92,300.
TOTALS	1979	374,990				5,568,000.
	1978	368,360				3,222,500.

1/ Livestock figures are based on average weight and average selling price of all animals. Figures show only local net weight gain of animals originally purchased from our county.

SANTA CLARA COUNTY  
DEPARTMENT OF AGRICULTURE

LIVESTOCK AND POULTRY

ITEM	YEAR	PRODUCTION	UNIT	VALUE	
				PER UNIT	TOTAL
Milk	1979	731,000	Cwt.	\$ 11.50	\$ 8,406,000.
Market	1978	750,000	Cwt.	10.26	7,695,000.
Manufacturing	1979	None	Cwt.	None	None
	1978	6,000	Cwt.	8.48	50,900.
Wool	1979	None	Lbs.	None	None
	1978	None	Lbs.	None	None
Eggs, Chicken 1/	1979	13,462,000	Doz.	.51	6,866,000.
	1978	13,480,000	Doz.	.46	6,201,000.
TOTALS	1979				15,272,000.
	1978				13,946,900.

1/ Includes market and farm retail eggs.

INVENTORIES OF LIVESTOCK AND POULTRY  
(In Number of Head)

ITEM	January 1, 1979	January 1, 1980
Milk Cows & Heifers that have calved	6,050	6,330
Other Cattle and Calves	17,210	18,800
Total	23,260	25,130
Sheep and Lambs	900	1,400
Hogs and Pigs	None	500
Hens and Pullets of Laying Age	617,000	697,000

SANTA CLARA COUNTY  
DEPARTMENT OF AGRICULTURE

COMPARATIVE FIGURES OF AGRICULTURAL VALUES

	<u>1960</u>	<u>1970</u>	<u>1975</u>	<u>1978</u>	<u>1979</u>
Rearing Acres Fruits, Nuts, All Berries	64,453	38,614	20,756	13,365	12,434
Vegetable Acreage	14,220	15,615	15,617	13,030	12,833
Fruit, Nut, Berry Crops	\$ 49,451,475	\$ 16,060,600	\$ 18,995,500	\$ 12,834,800	\$ 20,479,400
Vegetable Crops	8,624,480	13,869,700	30,818,700	35,445,000	37,740,600
Livestock, Poultry and Products	17,050,595	16,281,550	17,122,400	17,169,400	20,840,000
Field Crops and Apiary	3,053,975	2,037,300	4,411,500	2,875,400	3,661,160
Nursery Stock, Cut Flowers and Seed	13,122,985	17,287,200	31,746,700	38,354,200	40,847,000
<b>TOTALS</b>	<b>\$ 91,303,510</b>	<b>\$ 65,536,350</b>	<b>\$ 103,094,800</b>	<b>\$ 106,678,800</b>	<b>\$ 123,568,160</b>

LEADING AGRICULTURAL PRODUCTS IN SANTA CLARA COUNTY

<u>1979</u>	<u>1978</u>
AGRICULTURAL PRODUCT	AGRICULTURAL PRODUCT
VALUE 1/	VALUE 1/
1. Cut Flowers	1. Cut Flowers
\$ 29,753,000	\$ 28,748,200
2. Mushrooms	2. Mushrooms
14,514,000	12,250,000
3. Nursery Stock	3. Nursery Stock
9,772,000	8,888,000
4. Milk	4. Tomatoes - Processing
8,406,000	7,884,000
5. Tomatoes - Processing	5. Milk - All
7,700,000	7,745,900
6. Eggs - Chicken	6. Eggs - Chicken
6,866,000	6,201,000
7. Cattle & Calves	7. Cattle & Calves
5,250,000	3,055,000
8. Cherries	8. Grapes
4,419,000	2,948,000
9. Strawberries	9. Cucumbers
3,686,000	2,576,000
10. Prunes	10. Strawberries
3,112,000	2,454,000

1/ Based on value of quantity harvested for crops and on value of quantity marketed for livestock and poultry products.

TOTAL BEARING AND NON-  
BEARING ACREAGE OF  
PRINCIPAL CROPS 1/

	<u>1950</u>	<u>1960</u>	<u>1970</u>	<u>1978</u>	<u>1979</u>	<u>1979</u> <u>LOSS OR GAIN</u>
Apricots	16,511	12,096	5,276	1,703	1,625	- 78
Cherries	3,544	3,994	1,942	1,133	1,169	+ 36
Grapes	5,626	3,859	2,694	2,083	2,023	- 60
Kiwi	0	0	0	15	15	0
Pears	7,160	6,912	4,202	1,404	1,258	- 146
Prunes	47,708	33,940	19,408	4,520	4,047	- 473
Walnuts, English	9,619	8,918	5,498	2,530	2,254	- 276
Misc. Tree Crops (Apples, Peaches, Plums, Black Walnuts and Others)		578	706	242	245	+ 3
<b>TOTAL ACREAGE OF ALL TREES AND VINES</b>		<b>70,297</b>	<b>39,726</b>	<b>13,630</b>	<b>12,636</b>	<b>- 994</b>
Strawberries	1,947	1,480	330	250	300	
New Plantings of Trees and Vines		1,025	80	7	53	


1/ Excludes Bushberries and Prickly Pears.

		<u>Non-Bearing</u>	<u>Bearing</u>
Apricots	N Co	19	1,172
	S Co	10	424
	Total	29	1,596
Cherries, Bing	N Co	8	209
	S Co	278	314
	Total	286	523
Cherries, Royal Ann	N Co	0	92
	S Co	1	168
	Total	1	260
Cherries, All	N Co	9	329
	S Co	298	533
	Total	307	862
Grapes	N Co	13	723
	S Co	0	1,287
	Total	13	2,010
Pears, Bartlett	N Co	35	505
	S Co	27	462
	Total	62	967
Pears, All	N Co	77	694
	S Co	26	461
	Total	103	1,155
Prunes, French	N Co	19	891
	S Co	39	2,904
	Total	58	3,795
Prunes, Imperial	N Co	0	7
	S Co	1	64
	Total	1	71
Prunes, Sugar	N Co	0	9
	S Co	0	114
	Total	0	123
Prunes, All	N Co	19	907
	S Co	39	3,082
	Total	58	3,989
Walnuts, English	N Co	7	620
	S Co	11	1,616
	Total	18	2,236

---

		<u>Non-Bearing</u>	<u>Bearing</u>
TOTALS OF ABOVE	North County	144	4,445
	South County	384	7,403

\* Town of Coyote is used as the dividing point between North County and South County.

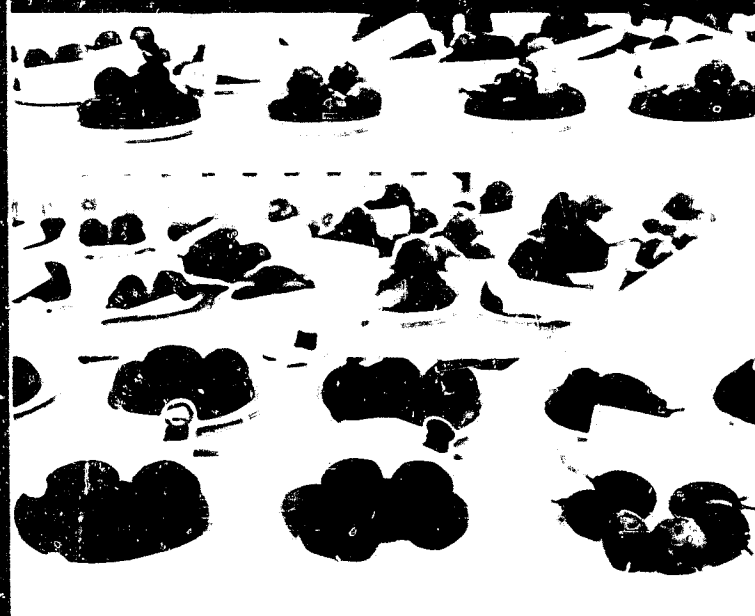
A vertical strip with a dark, textured background and a central white band. The strip is oriented vertically and appears to be a scan of a document page. The dark background has a grainy, speckled appearance, while the central white band is relatively clean and bright. The strip is positioned on the left side of the page.

1980



# 1980 AGRICULTURAL CROP REPORT

COUNTY OF SANTA CLARA



#### About the Cover:

located on the cover scene of Santa Clara County, some of the first fruit was found growing in China in 1847. Commercial plantings were established in New Zealand after 1900. Plants of an improved New Zealand strain were introduced at the United States Department of Agriculture station in Chicago in 1912. The first commercial plantings in Santa Clara County were in 1912 and 1913. Since then, it has become a new and important fruit crop. Growers are typically planted from one to two acres.

They come into full production when they are about 10 years old. Commercial vineyards contain one male for every three female plants. In the spring three or four beehives per acre are placed for pollination. The fruit is full sized in August but is still immature. When it contains 6-8% sugar it can be harvested, and this usually occurs in late October. Mature fruit can be stored for four to six months, provided the temperature is held at 31-32 degrees Fahrenheit. When in storage, the starch changes to sugar so a fruit may contain 12 to 15% sugar when eaten. Firm fruit will ripen at room temperature if placed in a plastic bag. Adding an apple will hasten ripening. This fruit is high in vitamin C and iron. Its enzymes make it good for the digestion and an effective meat tenderizer.

Do you recognize it? It has many names — Chinese Goose Pear, Monkey Peach, and Yang Tao, but the name in common usage is the kiwifruit!

Prepared by: Len Pacheco, Office of Visitor Services  
Photography by: Barbara Don, USA Photography

In May, and the kiwifruit vines are blooming.  
The fruit is being set (set = to)  
The fruit is ready in August and the kiwifruit is large enough to discuss.  
The kiwifruit is a green fruit, ready to eat in November.

County of Santa Clara  
California

March 3, 1981

TO: RICHARD ROMINGER, DIRECTOR, CALIFORNIA DEPARTMENT OF FOOD  
AND AGRICULTURE AND THE HONORABLE BOARD OF SUPERVISORS OF  
THE COUNTY OF SANTA CLARA:

ROD DIRIDON, CHAIRPERSON

ZOE LOFGREN  
DAN MCCORQUODALE

BECKY MORGAN  
SUSANNE WILSON

AND

MR. WILLIAM SIEGEL, COUNTY EXECUTIVE


In accordance with the provisions of Section 2279 of the California Agricultural Code, I am pleased to submit this 1980 Annual Agricultural Crop Report of the acreage, production and valuation of the agricultural crops and products produced in the County of Santa Clara.

It must be emphasized that this report reflects a gross return and in no way represents the actual profit to the producer.

I wish to express my sincere appreciation for the cooperation and assistance of all individuals and organizations who so willingly cooperated with this department in contributing the information necessary to make this report possible.

To all members of my staff, I express my sincere thanks for their diligent and conscientious effort in obtaining and compiling the information for this report.

Respectfully submitted,

  
C.O. Howe  
Agricultural Commissioner

CCH:dd

P E R S O N N E L

SAN JOSE OFFICE

C.O. HOWE, AGRICULTURAL COMMISSIONER

GORDON G. SPENCER, ASSISTANT AGRICULTURAL COMMISSIONER

DEPUTY AGRICULTURAL COMMISSIONERS

Roger B. Bibb                      Martial Cottle  
Eric C. Winkler

AGRICULTURAL INSPECTORS

Jim Ashikawa	Mark Guerra
Doreen Bass	Rod Jone
Bob Bertram	Stan Maggi
Stan Caplan	Loretta Malonzo
John Castro	Donald W. Schamberger
Joe Ferrari	Kermit Winn
Steve Gilmour	Larry Yamasaki

Lori Ford, Office Assistant  
Debbie Dicne and Glenda DiDenti, Clerical

MORGAN HILL OFFICE

AGRICULTURAL INSPECTORS

Tom Auser	John Ballard
Al Awbrey	Steve Burton
Jim Jones	

Margaret Heeter, Clerical

TABLE OF CONTENTS

	<u>PAGE</u>
Fruit and Nuts	1
Bushberries and Strawberries	1
Vegetable Crops	2
Seed Crops	3
Field Crops	3
Nursery Products - Cut Flowers	4
Nursery Products - Nursery Stock	4
Apiary Products	5
Livestock and Poultry	5
Livestock and Poultry Products	6
Inventories of Livestock and Poultry	6
Comparative Figures of Agricultural Values	7
Leading Agricultural Products	7
Acreage Trend of Fruit and Nut Crops	8
Comparative Acreages of Major Fruit and Nut Crops of North County and South County	9

TABLE OF CONTENTS

	<u>PAGE</u>
Fruit and Nuts	1
Bushberries and Strawberries	1
Vegetable Crops	2
Seed Crops	3
Field Crops	3
Nursery Products - Cut Flowers	4
Nursery Products - Nursery Stock	4
Apiary Products	5
Livestock and Poultry	5
Livestock and Poultry Products	6
Inventories of Livestock and Poultry	6
Comparative Figures of Agricultural Values	7
Leading Agricultural Products	7
Acreage Trend of Fruit and Nut Crops	8
Comparative Acreages of Major Fruit and Nut Crops of North County and South County	9

SANTA CLARA COUNTY  
DEPARTMENT OF AGRICULTURE

FRUITS AND NUTS

ITEM	YEAR	HARVESTED		PRODUCTION		VALUE	
		ACREAGE	PER ACRE	TOTAL	UNIT	PER UNIT	TOTAL
Apricots	1980	1,552	2.50	3,880	Ton	\$ 560.	\$ 2,173,000.
	1979	1,596	4.00	6,380	Ton	465.	2,967,000.
Cherries	1980	734	1.50	1,100	Ton	925.	1,018,000.
	1979	862	5.70	4,910	Ton	900.	4,419,000.
Grapes	1980	1,716	3.00	5,150	Ton	460.	2,369,000.
	1979	2,010	3.00	6,030	Ton	455.	2,744,000.
Kiwi	1980	26	2.50	65	Ton	2,350.	153,000.
	1979	15	1.00	15	Ton	1,500.	22,500.
Pears	1980	939	5.80	5,450	Ton	160.	872,000.
	1979	1,155	8.60	9,930	Ton	165.	1,638,000.
Prunes	1980	3,577	1.40	5,010	Ton	665.	3,332,000.
	1979	3,989	1.00	3,990	Ton	780.	3,112,000.
Walnuts	1980	2,051	0.50	1,025	Ton	800.	820,000.
	1979	2,236	0.53	1,180	Ton	760.	897,000.
Miscellaneous Fruit, Nuts & Prickly Pears	1980	256					830,000.
	1979	265					950,000.
TOTALS	1980	10,851					11,567,000.
	1979	12,128					16,749,500.

BUSHBERRIES AND STRAWBERRIES

ITEM	YEAR	ACREAGE	PER ACRE	TOTAL	UNIT	PER UNIT	TOTAL
Bushberries	1980	9	3.00	27	Ton	\$3,330.	\$ 89,900.
	1979	6	3.50	21	Ton	2,090.	43,900.
Strawberries	1980	290	19.00	5,510	Ton	610.	3,361,000.
	1979	300	19.50	5,850	Ton	630.	3,686,000.
TOTALS	1980	299					3,450,900.
	1979	306					3,729,900.

SANTA CLARA COUNTY  
DEPARTMENT OF AGRICULTURE

VEGETABLE CROPS

ITEM	YEAR	PRODUCTION		UNIT	VALUE		
		HARVESTED ACREAGE	PER ACRE		TOTAL	PER UNIT	TOTAL
Beans, Snap	1980	50	4.50	225	Ton	\$ 370.	\$ 83,200.
	1979	25	4.00	100	Ton	390.	39,000.
Cabbage	1980	150	9.00	1,350	Ton	130.	176,000.
	1979	45	11.00	495	Ton	150.	74,200.
Cauliflower	1980	340	4.00	1,360	Ton	420.	571,000.
	1979	275	8.50	2,340	Ton	190.	445,000.
Chinese Vegetables	1980	500	16.00	8,000	Ton	140.	1,120,000.
	1979	650	15.00	9,750	Ton	150.	1,462,000.
Corn	1980	340	4.50	1,530	Ton	220.	337,000.
	1979	180	5.00	900	Ton	200.	180,000.
Cucumbers	1980	1,300	13.00	16,900	Ton	150.	2,535,000.
	1979	850	15.00	12,800	Ton	150.	1,920,000.
Garlic	1980	740	5.00	3,700	Ton	525.	1,942,000.
	1979	520	5.50	2,860	Ton	350.	1,001,000.
Lettuce, Head	1980	1,610	9.00	14,500	Ton	185.	2,682,000.
	1979	780	10.00	7,800	Ton	150.	1,170,000.
Leaf	1980	335	8.00	2,680	Ton	230.	616,000.
	1979	350	8.00	2,800	Ton	220.	616,000.
Mushroom	1980	94	86.00	8,080	Ton	1,860.	15,029,000.
	1979	93	83.00	7,720	Ton	1,880.	14,514,000.
Mustard Greens	1980	55	6.00	330	Ton	400	132,000.
	1979	25	7.00	175	Ton	450.	78,800.
Onions	1980	310	18.00	5,580	Ton	150.	837,000.
	1979	380	18.00	6,840	Ton	130.	889,000.
Peppers, Bell	1980	1,500	10.00	15,000	Ton	280.	4,200,000.
	1979	1,450	9.50	13,800	Ton	190.	2,622,000.
Peppers, Chili & Wax	1980	340	6.50	2,210	Ton	445.	983,000.
	1979	420	6.50	2,730	Ton	440.	1,201,000.
Spinach	1980	150	5.00	750	Ton	375.	281,000.
	1979	130	5.50	715	Ton	340.	243,000.
Squash	1980	70	7.00	490	Ton	245.	120,000.
	1979	35	7.00	245	Ton	280.	68,600.



SANTA CLARA COUNTY  
DEPARTMENT OF AGRICULTURE

VEGETABLE CROPS - CONTINUED

ITEM	YEAR	HARVESTED		PRODUCTION		VALUE	
		ACREAGE	PER ACRE	TOTAL	UNIT	PER UNIT	TOTAL
Tomatoes	1980	180	14.0	2,520	Ton	\$ 295.	\$ 743,000.
Fresh	1979	110	17.5	1,920	Ton	285.	547,000.
Processed	1980	4,500	29.0	131,000	Ton	48.	6,288,000.
	1979	5,000	28.0	140,000	Ton	55.	7,700,000.
Cherry	1980	60	23.0	1,380	Ton	575.	794,000.
	1979	15	25.0	375	Ton	320.	120,000.
Misc.	1980	1,000					3,225,000.
Vegetables <sup>1/</sup>	1979	1,500					2,850,000.
TOTALS	1980	13,624					42,694,200.
	1979	12,833					37,740,600.

<sup>1/</sup> NOT REPORTED SEPARATELY TO AVOID DISCLOSURE OF CONFIDENTIAL BUSINESS DATA.

SEED CROPS

CROP	YEAR	HARVESTED ACREAGE	PRODUCTION TONS	TOTAL
Flower & Vegetable Seed	1980	1,300	660	\$ 1,424,000.
	1979	1,280	650	1,322,000.

FIELD CROPS

ITEM	YEAR	HARVESTED		PRODUCTION		VALUE	
		ACREAGE	PER ACRE	TOTAL	UNIT	PER UNIT	TOTAL
Barley	1980	1,090	1.50	1,640	Ton	\$ 125.	\$ 205,000.
	1979	795	1.09	870	Ton	105.	91,400.
Hay, Alfalfa	1980	270	5.00	1,350	Ton	85.	115,000.
	1979	250	5.50	1,380	Ton	90.	124,000.
Hay, Grain	1980	5,380	2.00	10,800	Ton	80.	864,000.
	1979	3,520	1.70	5,980	Ton	54.	323,000.
Pasture & Range							
Improved	1980	3,700			Acre	35.	132,000.
	1979	3,500			Acre	35.	122,000.
Irrigated	1980	1,500			Acre	200.	300,000.
	1979	1,500			Acre	200.	300,000.
Range	1980	220,000			Acre	8.	1,760,000.
	1979	220,000			Acre	8.	1,760,000.
Sugar Beets	1980	2,890	28.00	80,900	Ton	30.	2,427,000.
	1979	980	31.00	30,400	Ton	27.	821,000.
TOTALS	1980	234,630					5,793,000.
	1979	239,545					3,541,400.

SANTA CLARA COUNTY  
DEPARTMENT OF AGRICULTURE

NURSERY PRODUCTS - CUT FLOWERS

CATEGORIES	YEAR	HOUSE SQ. FT.	FIELD ACRES	SOLD BY PRODUCERS	UNIT	VALUE	TOTAL
						PER UNIT	
Anemone	1980		16	3,360,000	Bloom	\$ .105	\$ 353,000.
	1979		26	5,460,000	Bloom	.100	546,000.
Antirrhinum	1980	3,054,000		54,972,000	Bloom	.090	4,947,000.
	1979	3,430,000		61,740,000	Bloom	.085	5,248,000.
Antirrhinum	1980	593,000		1,324,000	Bunch	1.50	1,986,000.
	1979	514,000		1,130,000	Bunch	1.40	1,582,000.
Antirrhinum	1980	Standard	9,632,000	28,896,000	Bloom	.26	7,513,000.
		Other Types	8,601,000	25,803,000	Bloom	.18	4,644,000.
Antirrhinum		Barren	12,086,000	7,856,000	Bunch	1.10	8,642,000.
Total		30,319,000					20,799,000.
Antirrhinum	1979	Standard	11,488,000	34,464,000	Bloom	.24	8,271,000.
		Other Types	9,688,000	29,064,000	Bloom	.17	4,941,000.
Antirrhinum		Barren	13,765,000	8,947,000	Bunch	.95	8,300,000.
Total		34,941,000					21,712,000.
Miscellaneous 1/	1980						694,000.
	1979						665,000.
TOTALS	1980						28,779,000.
	1979						29,753,000.

1/ Includes Agapanthus, Gypsophila, Iris, Roses, Statice, Yarrow, etc.

NURSERY PRODUCTS - NURSERY STOCK

CATEGORIES	YEAR	PRODUCTION HOUSE SQ. FT.	AREA FIELD ACRES	QUANTITY SOLD BY PRODUCERS	UNIT	VALUE	TOTAL
						PER UNIT	
Decorative Plants	1980	250,000	9.0	665,000	Flats	Various	\$ 1,916,000.
	1979	270,000	3.0	552,000	Flats	Various	1,158,000.
Decorative Trees	1980		224.0	18,800	Tree	15.70	295,000.
	1979		176.0	19,600	Tree	13.60	267,000.
Decorative Trees	1980	5,750	179.0	1,154,000	Plant	Various	1,510,000.
Shrubs & Shrubs	1979	80,000	113.0	1,048,000	Plant	Various	5,217,000.
Miscellaneous 1/	1980	869,000	31.0	1,744,000	Plant	Various	3,535,000.
	1979	685,000	23.0	1,412,000	Plant	Various	3,130,000.
TOTALS	1980						13,557,000.
	1979						9,772,000.

1/ Includes Indoor Decoratives, Propagative Materials, Vegetable Plants and Herbaceous Perennials.

SANTA CLARA COUNTY  
DEPARTMENT OF AGRICULTURE

APIARY PRODUCTS

ITEM	YEAR	PRODUCTION	UNIT	VALUE	
				PER UNIT	TOTAL
Honey	1980	95,000	Lbs.	\$ 1.10	\$ 104,000.
	1979	176,000	Lbs.	.65	114,000.
Bees Wax	1980	1,550	Lbs.	1.90	2,940.
	1979	3,200	Lbs.	1.80	5,760.
TOTALS	1980				106,940.
	1979				119,760.

LIVESTOCK AND POULTRY

ITEM 1/	YEAR	NUMBER OF HEAD	PRODUCTION	UNIT	VALUE	TOTAL
			TOTAL LIVEWEIGHT		PER UNIT	
Cattle & Calves	1980	12,700	69,000	Cwt.	\$ 90.	\$6,210,000.
	1979	18,000	87,500	Cwt.	60.	5,250,000.
Breeding Stock	1980	580		Ea.	900.	522,000.
	1979	90		Ea.	620.	55,800.
Sheep & Lambs	1980	950	950	Cwt.	75.	71,000.
	1979	1,400	1,060	Cwt.	70.	74,200.
Hogs & Pigs	1980	990	1,700	Cwt.	60.	102,000.
	1979	500	1,000	Cwt.	46.	46,000.
Chickens	1980	486,000	1,944,000	Lbs.	0.06	117,000.
	1979	355,000	1,420,000	Lbs.	0.10	142,000.
TOTALS	1980	501,220				7,022,000.
	1979	374,990				5,568,000.

1/ Livestock figures are based on average weight and average selling price of all animals. Figures show only local net weight gain of animals originally purchased from our county.

SANTA CLARA COUNTY  
DEPARTMENT OF AGRICULTURE

LIVESTOCK AND POULTRY

ITEM	YEAR	PRODUCTION	UNIT	VALUE PER UNIT	TOTAL
Milk	1980	649,000	Cwt.	\$ 13.15	\$ 8,534,000.
Market	1979	731,000	Cwt.	11.50	8,406,000.
Manufacturing	1980	None	Cwt.	None	None
	1979	None	Cwt.	None	None
Eggs	1980	None	Lbs.	None	None
	1979	None	Lbs.	None	None
Eggs, Shelved 1/	1980	13,402,000	Doz.	.49	6,567,000.
	1979	13,462,000	Doz.	.51	6,866,000.
TOTALS	1980				15,101,000.
	1979				15,272,000.

1/ Includes market and farm retail eggs.

INVENTORIES OF LIVESTOCK AND POULTRY  
(In Number of Head)

ITEM	January 1, 1980	January 1, 1981
Milk Cows & Heifers that have calved	6,330	4,580
Other Cattle and Calves	18,800	18,300
Total	25,130	22,880
Sheep and Lambs	1,400	1,200
Hogs and Pigs	500	450
Cocks and Pullets of Laying Age	697,000	622,000

SANTA CLARA COUNTY  
DEPARTMENT OF AGRICULTURE

COMPARATIVE FIGURES OF AGRICULTURAL VALUES

	<u>1960</u>	<u>1970</u>	<u>1975</u>	<u>1979</u>	<u>1980</u>
Planting Acres Fruits, Nuts, All Berries	64,453	38,614	20,756	12,434	11,150
Planting Acres	14,220	15,615	15,617	12,833	13,624
Value of Fruits, Nuts, and Berries	\$ 49,431,475	\$ 16,060,600	\$ 18,995,500	\$ 20,472,400	\$ 15,017,900
Value of Vegetables	5,624,480	13,869,700	30,818,700	37,740,600	42,594,200
Value of Fruit and Vegetable Crops	11,050,595	16,281,550	17,122,400	20,840,000	22,123,000
Value of All Crops	3,053,975	2,037,300	4,411,500	3,661,160	5,899,940
Value of Livestock and Poultry	13,112,985	17,237,200	31,746,700	40,847,000	44,260,020
TOTALS	\$41,303,510	\$67,536,350	\$103,094,800	\$123,568,160	\$129,995,040

LEADING AGRICULTURAL PRODUCTS IN SANTA CLARA COUNTY

<u>1960</u>		<u>1979</u>	
AGRICULTURAL PRODUCT	VALUE 1/	AGRICULTURAL PRODUCT	VALUE 1/
1. Cut Flowers	\$ 28,779,000	1. Cut Flowers	\$ 29,753,000
2. Mushrooms	15,029,000	2. Mushroom	14,514,000
3. Nursery Stock	13,557,000	3. Nursery Stock	9,772,000
4. Milk	8,524,000	4. Milk	8,406,000
5. Tomatoes - Processing	6,367,000	5. Tomatoes - Processing	7,700,000
6. Eggs - Chicken	6,288,000	6. Eggs - Chicken	6,866,000
7. Cattle & Calves	5,210,000	7. Cattle & Calves	5,250,000
8. Cherries	4,200,000	8. Cherries	4,419,000
9. Strawberries	3,361,000	9. Strawberries	3,686,000
10. Prunes	3,332,000	10. Prunes	3,112,000

1/ - on value of quantity harvested for crops and on value of quantity marketed for livestock and poultry products.

SANTA CLARA COUNTY  
DEPARTMENT OF AGRICULTURE

ACREAGE TRENDS

TOTAL BEARING AND NON-BEARING ACREAGE OF PRINCIPAL CROPS 1/

	<u>1950</u>	<u>1960</u>	<u>1970</u>	<u>1979</u>	<u>1980</u>	<u>1980 LOSS OR GAIN</u>
Apples	16,511	12,096	5,276	1,625	1,582	- 43
Cherries	3,544	3,994	1,942	1,169	1,027	- 142
Grapes	5,626	3,859	2,694	2,023	1,724	- 299
Kwila	0	0	0	15	38	+ 23
Pears	7,160	6,912	4,202	1,258	1,000	- 258
Prunes	47,708	33,940	19,408	4,047	3,604	- 443
Walnuts, English	9,619	8,918	5,498	2,254	2,070	- 184
Misc. Tree Crops (Apples, Peaches, Plums, Black Walnut and Others)		678	706	245	190	- 55
<b>TOTAL ACREAGE OF ALL TREES AND VINES</b>		<b>70,297</b>	<b>39,726</b>	<b>12,636</b>	<b>11,235</b>	<b>-1,401</b>
Strawberries	1,947	1,480	330	300	290	
New Plantings of Trees and Vines		1,025	80	53	27	

1/ Exclude: Buckberries and Prickly Pears.

SANTA CLARA COUNTY  
DEPARTMENT OF AGRICULTURE

ACREAGE OF MAJOR FRUIT AND NUT CROPS  
NORTH COUNTY VS. SOUTH COUNTY\*

		<u>Non-Bearing</u>	<u>Bearing</u>
Apricots	N Co	15	1,073
	S Co	15	479
	Total	30	1,552
Cherries, Bing	N Co	8	168
	S Co	259	294
	Total	267	462
Cherries, Royal Ann	N Co	0	55
	S Co	5	150
	Total	5	205
Cherries, All	N Co	10	244
	S Co	283	490
	Total	293	734
Grapes	N Co	8	715
	S Co	0	1,001
	Total	8	1,716
Pears, Bartlett	N Co	21	433
	S Co	32	373
	Total	53	806
Pears, All	N Co	24	566
	S Co	32	373
	Total	61	939
Prunes, French	N Co	3	737
	S Co	21	2,689
	Total	24	3,426
Prunes, Imperial	N Co	0	7
	S Co	1	61
	Total	1	68
Prunes, Suzar	N Co	0	9
	S Co	0	75
	Total	0	84
Prunes, All	N Co	3	752
	S Co	24	2,825
	Total	27	3,577
Walnuts, English	N Co	6	539
	S Co	13	1,512
	Total	19	2,051

---

TOTALS OF ABOVE		<u>Non-Bearing</u>	<u>Bearing</u>
	North County	71	3,889
	South County	367	6,680

\*Town of Coyote is used as the dividing point between North County and South County.

SANTA CLARA COUNTY  
DEPARTMENT OF AGRICULTURE  
1555 DEERTRAIL DRIVE  
SAN JOSE, CALIFORNIA 95128

THIRD CLASS MAIL

University of California - Library  
ATTN: Government Documents Librarian  
Davis, CA, 95616