



**AgEcon** SEARCH  
RESEARCH IN AGRICULTURAL & APPLIED ECONOMICS

*The World's Largest Open Access Agricultural & Applied Economics Digital Library*

**This document is discoverable and free to researchers across the globe due to the work of AgEcon Search.**

**Help ensure our sustainability.**

Give to AgEcon Search

AgEcon Search

<http://ageconsearch.umn.edu>

[aesearch@umn.edu](mailto:aesearch@umn.edu)

*Papers downloaded from **AgEcon Search** may be used for non-commercial purposes and personal study only. No other use, including posting to another Internet site, is permitted without permission from the copyright owner (not AgEcon Search), or as allowed under the provisions of Fair Use, U.S. Copyright Act, Title 17 U.S.C.*

California Department of Food and Agriculture

Agricultural Commissioners' Crop Reports

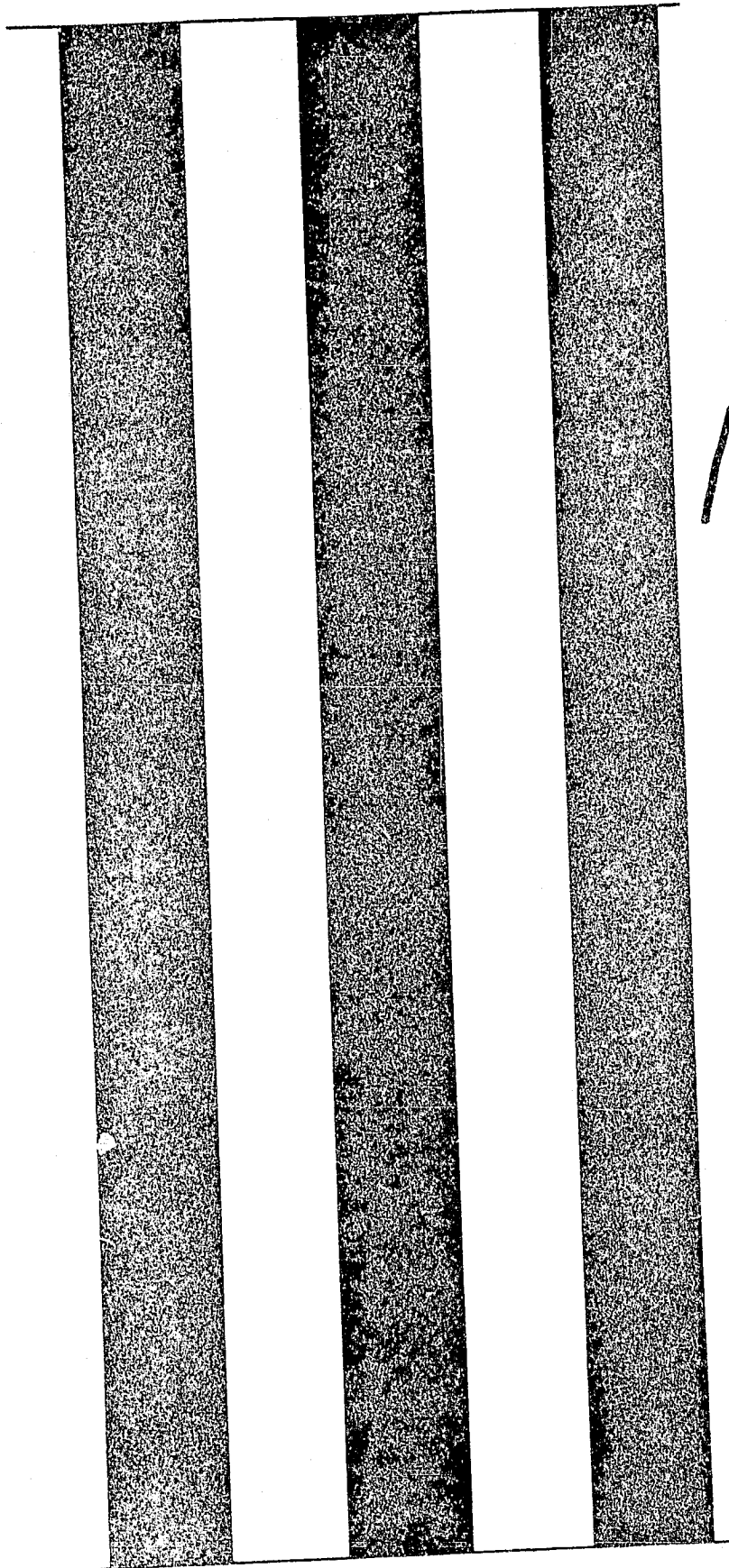
# Santa Barbara County

1961-1971

California County Agricultural Commissioners' Reports from the California Department of Food and Agriculture. This collection consists of annual crop and livestock data from each of the 58 California Counties. The collection covers 1915-1981; digitization of the rest of the collection is forthcoming.

This digitization project was funded by the Giannini Foundation of Agricultural Economics,  
<http://giannini.ucop.edu/>.

The work was completed by the staff of the Giannini Foundation Library, University of California, Berkeley, <http://are.berkeley.edu/library/>. **Please contact the Library to consult the originals.**



1961

Ref V.F.

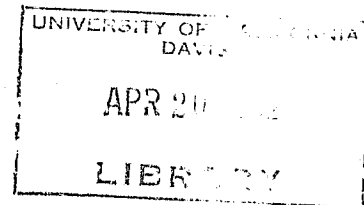


# Agricultural Crop Report

## 1961

DEPARTMENT OF AGRICULTURE  
SANTA BARBARA COUNTY, CALIFORNIA

California Counties



TO CHARLES PAUL, Director, California State Department of Agriculture, and the Honorable Board of Supervisors of Santa Barbara County, California.

The acreages shown in this report are the planted acres of fruit and nut crops and harvested acres of field and vegetable crops. The gross value shown is the F.O.B. value at first shipping point, which includes the cost of harvesting, grading and packaging, as well as the cost of production. This report does NOT indicate returns or profits to the producers or farmers. It does, however, show the amount of new wealth contributed by agriculture to the economy of Santa Barbara County. Agriculture continues to be an important segment in the economy of Santa Barbara County despite the continued increasing urbanization in some areas. The effects of the third year in succession of below normal rainfall is shown in the reduced acreage and yields of many crops, particularly those that are dry farmed. Low rainfall also seriously affected range condition which is reflected in the livestock figures.

My sincere thanks are extended to the many individuals, companies and organizations for their very fine cooperation in making available the necessary data from which this Crop Report is compiled.

Walter S. Cummings  
Agricultural Commissioner

NURSERY PRODUCTS: Production Area, Sales and Value 1960-61

ITEM	Year	PRODUCTION AREA		QUANTITY			VALUE	
		Sq. Ft.	Acres	Sold by Producers	Unit	Per Unit	Total	
CITRUS AND SUBTROPICAL	1961	4,000	5	20,200	Plant	\$ 2.04	\$ 41,200.	
	1960	700	5	21,600	Plant	2.18	47,100.	
ORNAMENTAL TREES AND SHRUBS	1961	65,300	71				762,000.	
	1960	22,000	51				737,000.	
HERBACEOUS PERENNIALS	1961	944,000	54				544,000.	
	1960	876,000	54				382,000.	
INDOOR DECORATIVE PLANTS	1961	649,000					509,000.	
	1960	664,000					536,000.	
MISCELLANEOUS	1961	2,000	3				5,000.	
	1960	4,100	5				9,100.	
TOTAL NURSERY STOCK	1961	1,664,300	133				\$1,861,200.	
	1960	1,566,800	115				\$1,711,200.	
CUT FLOWERS	1961	1,538,876	416				\$1,353,000.	
	1960	1,519,876	359				\$1,144,000.	

FRUIT AND NUT CROPS: Acreage, Production, Value 1960-1961

CROP	Year	PRODUCTION				VALUE		
		Planted Acreage	Bearing Acreage	Per Acre	Total	Unit	Per Unit	Total
AVOCADOS	1961	1,683	1,389	2.5	3,470	Ton	\$ 414.70	\$ 1,439,000.
	1960	1,646	1,260	2.95	3,720	Ton	220.00	818,000.
LEMONS, TOTAL	1961	7,652	6,999	12.3	86,200	Ton	97.80	8,431,000.
	1960	8,413	7,395	12.9	95,300	Ton	76.70	7,311,000.
Market	1961				62,000	Ton	121.50	7,534,000.
	1960				52,700	Ton	127.00	6,693,000.
Processing	1961				24,200	Ton	37.00	897,000.
	1960				42,600	Ton	14.50	618,000.
ORANGES	1961	80	73	4.11	300	Ton	120.75	36,200.
	1960	81	76	6.06	461	Ton	97.80	45,100.
STRAWBERRIES	1961		821	13.9	11,410	Ton	308.30	3,518,000.
	1960		798	10.9	8,740	Ton	345.00	3,013,000.
Market	1961				5,710	Ton	406.50	2,321,000.
	1960				3,870	Ton	416.00	1,610,000.
Processing	1961				5,700	Ton	210.00	1,197,000.
	1960				4,870	Ton	288.00	1,403,000.
WALNUTS	1961	2,267	1,949	.328	640	Ton	560.00	358,000.
	1960	2,390	2,044	.494	1,010	Ton	581.00	587,000.
MISCELLANEOUS	1961		74					30,000.
	1960		88					58,000.
TOTAL	1961	11,682	11,305					\$13,812,200.
	1960	12,530	11,661					\$11,832,100.

SEED CROPS: Acreage, Production, Value 1960-1961

CROP	Year	PRODUCTION			VALUE		
		Harvested Acreage	Per Unit	Total	Unit	Per Unit	Total
BEAN, SEED	1961	3,152	.879	2,773	Ton	\$ 266.00	\$ 738,000.
	1960	4,310	.822	3,540	Ton	220.00	779,000.
FLOWER SEED	1961	2,153					2,150,000.
	1960	2,220					2,002,000.
MUSTARD	1961	205	.117	24	Ton	100.00	2,400.
	1960	1,640	.67	1,100	Ton	170.00	187,000.
VEGETABLE SEED	1961	119					92,800.
	1960	63					31,500.
MISCELLANEOUS	1961	200					15,200.
	1960	100					4,300.
TOTAL	1961	5,829					\$2,998,400.
	1960	8,333					\$3,003,800.

VEGETABLE CROPS: Acreage, Production, Value 1960-1961

CROP	Year	PRODUCTION			VALUE		
		Harvested Acreage	Per Acre	Total	Unit	Per Unit	Total
ANISE	1961	95	10.5	1,000	Ton	\$ 75.50	\$ 75,500.
	1960	108	10.6	1,140	Ton	82.00	93,500.
ARTICHOKES, TOTAL	1961	1,210	2.57	3,114	Ton	143.50	447,000.
	1960	1,250	2.34	2,930	Ton	148.00	433,000.
Market	1961			3,069	Ton	145.00	445,000.
	1960			2,830	Ton	150.00	424,000.
Frozen	1961			45	Ton	44.40	2,000.
	1960			100	Ton	90.00	9,000.
BEANS							
Lima, Frozen	1961	2,680	1.62	4,342	Ton	155.00	673,000.
	1960	2,310	1.57	3,630	Ton	142.00	515,000.
BROCCOLI, TOTAL	1961	8,350	3.26	27,265	Ton	144.10	3,928,000.
	1960	7,640	3.38	25,800	Ton	145.00	3,737,000.
Market	1961			12,405	Ton	154.90	1,922,000.
	1960			13,900	Ton	155.00	2,154,000.
Frozen	1961			14,860	Ton	135.00	2,006,000.
	1960			11,900	Ton	133.00	1,583,000.
BRUSSELS SPROUTS	1961	56	4.45	249	Ton	409.60	102,000.
	1960	--	--	--	--	--	--
CABBAGE, TOTAL	1961	306	9.33	2,854	Ton	47.48	135,500.
	1960	451	7.94	3,580	Ton	59.00	211,000.
Market	1961	246	7.94	1,954	Ton	62.40	122,000.
	1960	451	7.94	3,580	Ton	59.00	211,000.
Processing	1961	60	15.0	900	Ton	15.00	13,500.
	1960	--	--	--	--	--	--
CARROTS	1961	1,450	22.3	32,380	Ton	39.30	1,273,500.
	1960	1,190	16.5	19,600	Ton	44.40	870,000.
CAULIFLOWER, TOTAL	1961	1,950	4.48	8,736	Ton	163.20	1,426,000.
	1960	1,920	6.03	11,580	Ton	131.00	1,512,000.
Market	1961			6,862	Ton	171.20	1,175,000.
	1960			10,100	Ton	133.00	1,343,000.
Frozen	1961			1,874	Ton	133.90	251,000.
	1960			1,480	Ton	114.00	169,000.
CELERY	1961	1,420	24.2	34,382	Ton	60.60	2,084,000.
	1960	2,230	18.6	41,500	Ton	63.00	2,614,000.
CORN, SWEET	1961	30	4.3	130	Ton	150.00	19,500.
	1960	60	4.2	252	Ton	167.00	42,100.

## VEGETABLE CROPS: Acreage, Production, Value 1960-1961 (Continued)

CROP	Year	Harvested Acreage	PRODUCTION			VALUE	
			Per Acre	Total	Unit	Per Unit	Total
CUCUMBERS	1961	30	11.2	336	Ton	\$ 99.40	\$ 33,400.
	1960	33	13.3	439	Ton	106.00	46,500.
ENDIVE	1961	288	6.12	1,763	Ton	114.00	201,000.
	1960	502	6.12	3,070	Ton	128.00	393,000.
LETTUCE	1961	4,740	8.18	38,765	Ton	64.70	2,508,000.
	1960	4,130	9.27	38,300	Ton	65.60	2,512,000.
PEAS, TOTAL	1961	932	1.7	1,486	Ton	84.68	134,300.
	1960	403	1.5	604	Ton	109.00	65,600.
Market	1961			177	Ton	165.50	29,300.
	1960			154	Ton	192.00	29,600.
Frozen	1961			1,309	Ton	80.00	105,000.
	1960			450	Ton	80.00	36,000.
PEPPERS, BELL	1961	38	6.1	232	Ton	150.00	34,800.
	1960	72	7.24	521	Ton	80.80	42,100.
PEPPERS, CHILI	1961	5	6.6	33	Ton	263.60	8,700.
	1960	44	6.89	303	Ton	178.00	53,900.
PEPPERS, DRY	1961	752	1.53	1,152	Ton	381.00	439,000.
	1960	860	1.38	1,190	Ton	350.00	416,000.
POTATOES	1961	2,740	14.15	38,770	Ton	47.00	1,822,000.
	1960	2,460	14.5	35,700	Ton	74.50	2,660,000.
ROMAINE	1961	163	12.67	2,066	Ton	62.40	129,000.
	1960	88	10.6	933	Ton	42.30	39,500.
TOMATOES, TOTAL	1961	908	14.13	12,830	Ton	38.50	494,000.
	1960	1,460	9.34	13,640	Ton	37.10	506,000.
Market	1961			1,530	Ton	101.30	155,000.
	1960			3,140	Ton	82.40	259,000.
Processing	1961			11,300	Ton	30.00	339,000.
	1960			10,500	Ton	23.50	247,000.
SQUASH, MATURE	1961	48	14.69	705	Ton	35.30	24,900.
	1960	54	15.2	821	Ton	32.70	26,800.
MISCELLANEOUS	1961	185					114,000.
	1960	355					<u>222,000.</u>
TOTAL	1961	28,376					\$ 16,107,100.
	1960	27,600					\$ 17,011,000.



FIELD CROPS: Acreage, Production, Value 1960-1961

CROP	Year	PRODUCTION				VALUE	
		Harvested Acreage	Per Acre	Total	Unit	Per Unit	Total
BARLEY	1961	6,150	.517	3,180	Ton	\$ 45.60	\$ 145,000.
	1960	12,000	.728	8,740	Ton	43.00	376,000.
BEANS, TOTAL	1961	8,239	.714	5,896	Ton	283.70	1,672,800.
	1960	12,289	.681	8,367	Ton	221.00	1,845,700.
Baby Limas	1961	375	.29	112	Ton	180.00	20,200.
	1960	649	.474	308	Ton	160.00	49,300.
Small Whites	1961	1,537	.597	919	Ton	225.00	207,000.
	1960	1,350	1.01	1,360	Ton	160.00	218,000.
Pinks	1961	360	.772	278	Ton	200.00	55,600.
	1960	512	.65	333	Ton	175.00	58,300.
Limas	1961	4,147	.896	3,716	Ton	313.00	1,163,000.
	1960	4,320	.975	4,210	Ton	286.00	1,204,000.
Garbanzos	1961	649	.231	150	Ton	180.00	27,000.
	1960	5 090	.387	1,970	Ton	140.00	276,000.
Fordhook	1961	1,076	.646	696	Ton	280.00	195,000.
	1960	341	.5	170	Ton	220.00	37,400.
Miscellaneous	1961	95	.263	25	Ton	200.00	5,000.
	1960	27	.6	16	Ton	169.00	2,700.
HAY, ALFALFA	1961	11,400	8.68	99,000	Ton	24.00	2,376,000.
	1960	10,200	7.89	80,500	Ton	30.00	2,415,000.
HAY, GRAIN	1961	12,570	.914	11,500	Ton	30.00	345,000.
	1960	12,500	1.52	19,000	Ton	35.00	665,000.
OATS	1961	735	.391	288	Ton	50.00	14,400.
	1960	1,520	.508	772	Ton	48.00	37,100.
PASTURE, IRRIGATED	1961	4,950				50.00	248,000.
	1960	4,550				40.00	182,000.
PASTURE, Other	1961	505,000				2.00	1,010,000.
	1960	500,000				2.50	1,250,000.
SILAGE, CORN	1961	3,070	29.9	91,740	Ton	9.00	826,000.
	1960	2,510	31.	77,800	Ton	10.50	817,000.
SORGHUM GRAIN	1961	100	2.5	250	Ton	40.00	10,000.
	1960	100	2.76	276	Ton	40.00	11,000.
STRAW	1961	125	1.88	235	Ton	20.00	4,700.
	1960	665	1.65	1,100	Ton	15.00	16,500.
SUGAR BEETS	1961	2,597	21.24	55,168	Ton	13.70	756,000.
	1960	2,860	21.2	60,600	Ton	14.50	879,000.
WHEAT	1961	694	.195	139	Ton	65.00	9,000.
	1960	1,880	.5	940	Ton	60.00	56,400.
MISCELLANEOUS	1961	3,000					97,600.
	1960	925					41,800.
TOTAL	1961	558,630					\$ 7,514,500.
	1960	561,969					\$ 8,592,500.

LIVESTOCK AND POULTRY: Production and Value 1960-1961

ITEM	Year	PRODUCTION		Unit	VALUE	
		No. of Head	Total Liveweight		Per Unit	Total
CATTLE AND CALVES	1961	88,300	654,000	Cwt.	\$ 22.03	\$ 14,411,000.
	1960	104,000	783,000	Cwt.	21.80	17,069,000.
SHEEP AND LAMBS	1961	1,600	1,800	Cwt.	8.25	14,900.
	1960	5,150	4,640	Cwt.	8.15	37,800.
HOGS AND PIGS	1961	2,269	4,100	Cwt.	17.85	73,200.
	1960	2,760	5,870	Cwt.	17.50	103,000.
BROILERS AND FRYERS	1961	348,000	1,096,000	Lb.	.18	202,000.
	1960	516,000	1,671,000	Lb.	.17	284,000.
OTHER CHICKENS	1961	86,900	284,000	Lb.	.07	21,600.
	1960	107,000	375,000	Lb.	.07	26,200.
TURKEYS	1961	103,800	2,130,300	Lb.	.18	375,000.
	1960	50,500	1,086,000	Lb.	.26	282,000.
MISCELLANEOUS	1961					77,000.
	1960					37,300.
TOTAL	1961					\$ 15,174,700.
	1960					\$ 17,839,300.

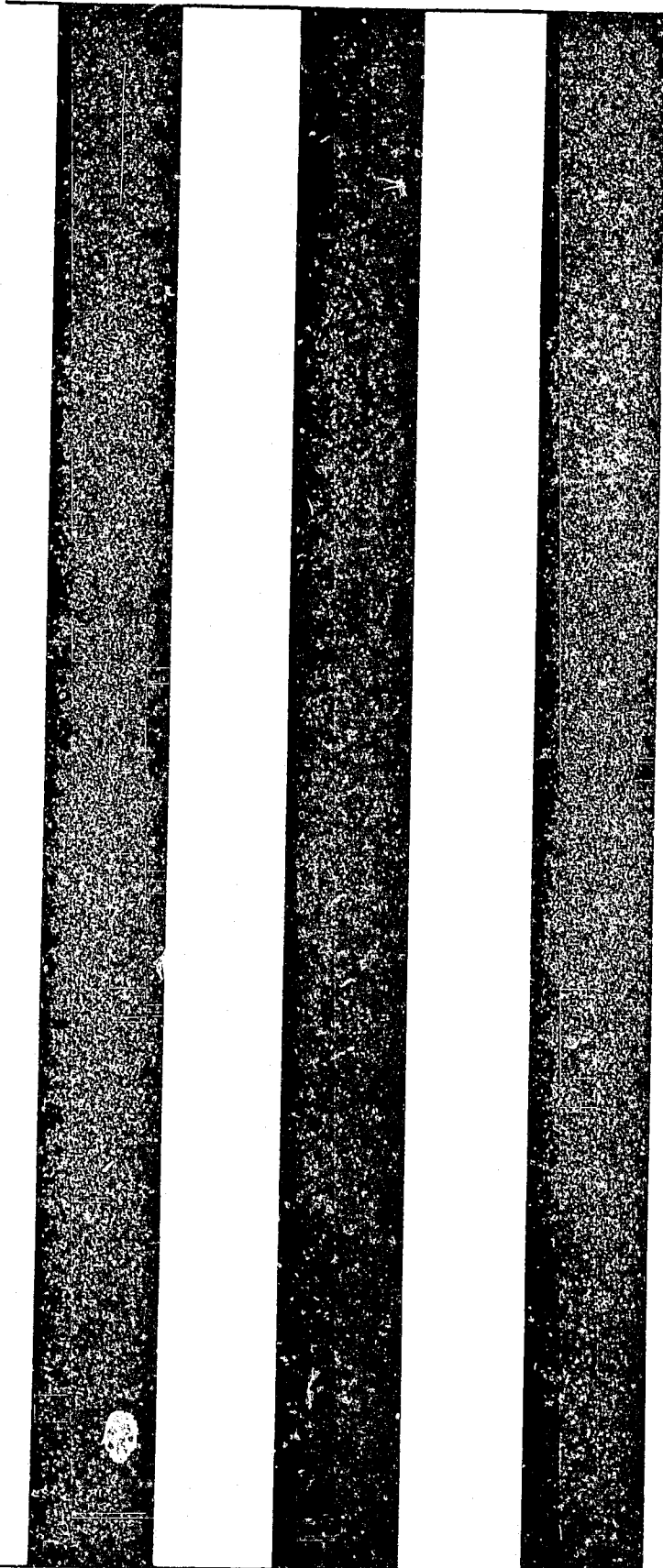
LIVESTOCK AND POULTRY PRODUCTS: Production and Value 1960-1961

ITEM	Year	PRODUCTION	Unit	VALUE	
				Per Unit	Total
MILK, TOTAL	1961	919,530	Cwt.	\$ 5.23	\$ 4,810,800.
	1960	886,600	Cwt.	5.26	4,661,300.
Market	1961	913,000	Cwt.	5.25	4,793,000.
	1960	870,000	Cwt.	5.30	4,611,000.
Manufacturing	1961	6,530	Cwt.	2.73	17,800.
	1960	16,600	Cwt.	3.03	50,300.
WOOL	1961	8,488	Lb.	.37	3,100.
	1960	10,000	Lb.	.38	3,800.
EGGS, CHICKEN	1961	3,916,000	Doz.	.39	1,527,000.
	1960	2,854,000	Doz.	.41	1,170,000.
MISCELLANEOUS	1961				25,000.
	1960				72,500.
TOTAL	1961				\$ 6,365,900.
	1960				\$ 5,907,600.

S U M M A R Y

	Year	Acreage	§ F.O.B. Value
FRUIT AND NUT CROPS	1961	11,682	\$ 13,812,200.
	1960	12,530	11,832,100.
VEGETABLE CROPS	1961	28,376	16,107,100.
	1960	27,600	17,011,000.
FIELD CROPS	1961	558,630	7,514,500.
	1960	561,969	8,592,500.
NURSERY PRODUCTS	1961	133	1,861,200.
	1960	115	1,711,200.
CUT FLOWERS	1961	416	1,353,000.
	1960	359	1,144,000.
SEED CROPS	1961	5,829	2,998,400.
	1960	8,333	3,003,800.
LIVESTOCK and POULTRY	1961		15,174,700.
	1960		17,839,300.
LIVESTOCK and POULTRY PRODUCTS	1961		6,365,900.
	1960		5,907,600.
TOTAL	1961	605,066	\$ 65,187,000.
	1960	610,906	\$ 67,041,500.

§ This is NOT the farm value but includes value after being graded,  
packed and sold in Santa Barbara County points.



1962

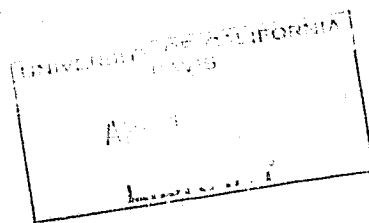
Stacks-  
Pambox

Calif. Agriculture



# Agricultural Crop Report

## 1962



DEPARTMENT OF AGRICULTURE  
SANTA BARBARA COUNTY, CALIFORNIA

TO CHARLES PAUL, Director, California State Department of Agriculture, and the Honorable Board of Supervisors of Santa Barbara County, California.

The acreages shown in this report are the planted and bearing acres of fruit and nut crops and harvested acres of field and vegetable crops. The 1962 acreages of fruits and nuts have been adjusted as a result of a resurvey of these crops during the year. The gross value shown is the F.O.B. value at first point of sale, which includes the cost of harvesting, grading and packaging, as well as the cost of production. All value figures have been rounded. This report does NOT indicate returns or profits to the producer or farmer. It does, however, show the amount of new wealth contributed by agriculture to the economy of Santa Barbara County. The total value of agricultural production reached an all time high in 1962 even in the face of continued urbanization of farm lands.

My sincere thanks are extended to the many individuals, companies, and organizations for their very fine cooperation in making available the necessary data from which this Crop Report is compiled.

Walter S. Cummings  
Agricultural Commissioner

NURSERY PRODUCTS: Production area, Sales and Value 1961-62

ITEM	Year	PRODUCTION AREA		QUANTITY		VALUE	
		House Sq. Ft.	Field Acres	Sold by Producers	Unit	Per Unit	Total
CITRUS AND SUBTROPICAL	1962	6,800		6,555		\$ 2.25	\$ 14,700.
	1961	4,000	5	20,200	Plant	2.04	41,200.
ORNAMENTAL TREES AND SHRUBS	1962	77,600	80				775,000.
	1961	65,300	71				762,000.
HERBACEOUS PERENNIALS	1962	943,840	53				353,000.
	1961	944,000	54				394,000.
INDOOR DECORATIVE PLANTS	1962	1,286,900					521,000.
	1961	1,629,000					509,000.
MISCELLANEOUS	1962	2,000	5				8,000.
	1961	2,000	3				5,000.
TOTAL NURSERY STOCK	1962	2,317,140	138				\$ 1,671,700.
	1961	2,644,300	133				\$ 1,711,200.
CUT FLOWERS	1962	1,562,220	474				\$ 1,502,000.
	1961	1,538,876	416				\$ 1,353,000.

FRUIT AND NUT CROPS: Acreage, Production, Value 1961-62

CROP	Year	ACREAGE		PRODUCTION			VALUE	
		Planted	Bearing	Per Acre	Total	Unit	Per Unit	Total
AVOCADOS	1962	1,974	1,329	3.5	4,700	Ton	\$ 240.00	\$ 1,280,000.
	1961	1,683	1,389	2.5	3,470	Ton	414.70	1,439,000.
LEMONS, TOTAL	1962	6,662	6,191	12.	74,398	Ton	88.93	6,616,000.
	1961	7,652	6,999	12.3	86,200	Ton	97.80	8,431,000.
Market	1962				43,056	Ton	130.00	5,597,000.
	1961				62,000	Ton	121.50	7,534,000.
Processing	1962				31,342	Ton	32.50	1,019,000.
	1961				24,200	Ton	37.00	897,000.
ORANGES	1962	87	61	6.55	400	Ton	125.00	50,000.
	1961	80	73	4.11	300	Ton	120.75	36,200.
STRAWBERRIES, TOTAL	1962	827	827	12.95	10,710	Ton	327.54	3,508,000.
	1961	821	821	13.9	11,410	Ton	308.30	3,518,000.
Market	1962				6,450	Ton	392.00	2,528,000.
	1961				5,710	Ton	406.50	2,321,000.
Processing	1962				4,260	Ton	230.00	980,000.
	1961				5,700	Ton	210.00	1,197,000.
WALNUTS	1962	1,797	1,619	.817	1,324	Ton	550.00	728,000.
	1961	2,267	1,949	.328	640	Ton	560.00	358,000.
MISCELLANEOUS	1962	199	135					50,000.
	1961	195	130					30,000.
TOTAL	1962	11,546	10,162					\$ 12,080,000.
	1961	12,698	11,361					\$ 13,812,200.

SEED CROPS: Acreage, Production, Value 1961-62

CROP	Year	Harvested Acreage	PRODUCTION		VALUE		
			Per Acre	Total	Unit	Per Unit	Total
BEAN, SEED	1962	3,535	.837	2,962	Ton	\$ 260.00	\$ 771,000.
	1961	3,152	.879	2,773	Ton	266.00	738,000.
FLOWER SEED	1962	1,938					1,976,000.
	1961	2,153					2,150,000.
MUSTARD	1962	95	1.24	118	Ton	148.00	17,000.
	1961	205	.117	24	Ton	100.00	2,400.
VEGETABLE SEED	1962	74					80,000.
	1961	119					92,800.
MISCELLANEOUS	1962	220					65,000.
	1961	200					15,200.
TOTAL	1962	5,862					\$ 2,909,000.
	1961	5,829					\$ 2,998,400.

VEGETABLE CROPS: Acreage, Production, Value 1961-62

CROP	Year	Harvested Acreage	PRODUCTION			VALUE	
			Per Acre	Total	Unit	Per Unit	Total
ANISE	1962	86	8.67	746	Ton	\$ 93.00	\$ 69,400.
	1961	95	10.5	1,000	Ton	75.50	75,500.
ARTICHOKES, TOTAL	1962	1,038	3.12	3,244	Ton	185.17	600,700.
	1961	1,210	2.57	3,114	Ton	143.50	447,000.
Market	1962			3,225	Ton	186.00	600,000.
	1961			3,069	Ton	145.00	445,000.
Frozen	1962			19	Ton	37.00	700.
	1961			45	Ton	44.00	2,000.
BEANS							
Lima, Frozen	1962	2,750	1.5	4,126	Ton	160.00	660,000.
	1961	2,680	1.62	4,342	Ton	155.00	673,000.
BROCCOLI, TOTAL	1962	8,401	2.96	24,899	Ton	143.70	3,578,000.
	1961	8,350	3.26	27,265	Ton	144.10	3,928,000.
Market	1962			10,854	Ton	155.00	1,682,000.
	1961			12,405	Ton	154.90	1,922,000.
Frozen	1962			14,045	Ton	135.00	1,896,000.
	1961			14,860	Ton	135.00	2,006,000.
BRUSSELS SPROUTS	1962	33	4.45	147	Ton	300.00	44,100.
	1961	56	4.45	249	Ton	409.60	102,000.
CABBAGE, TOTAL	1962	378	11.57	4,372	Ton	54.89	240,100.
	1961	306	9.33	2,854	Ton	47.48	135,500.
Market	1962	298	9.27	2,764	Ton	78.00	216,000.
	1961	246	7.94	1,954	Ton	62.40	122,000.
Processing	1962	80	20.0	1,608	Ton	15.00	24,100.
	1961	60	15.0	900	Ton	15.00	13,500.
CARROTS	1962	1,559	20.0	31,208	Ton	49.99	1,560,000.
	1961	1,450	22.3	32,380	Ton	39.30	1,273,500.
CAULIFLOWER, TOTAL	1962	836	5.4	4,529	Ton	159.64	723,000.
	1961	1,950	4.48	8,736	Ton	163.20	1,426,000.
Market	1962			3,615	Ton	172.06	622,000.
	1961			6,862	Ton	171.20	1,175,000.
Frozen	1962			914	Ton	110.50	101,000.
	1961			1,874	Ton	133.90	251,000.
CELERY	1962	1,006	27.0	27,164	Ton	59.50	1,616,000.
	1961	1,420	24.2	34,382	Ton	60.60	2,084,000.
CORN, SWEET	1962	28	2.0	57	Ton	140.35	8,000.
	1961	30	4.3	130	Ton	150.00	19,500.



## VEGETABLE CROPS: Acreage, Production, Value 1961-62 (Continued)

CROP	Year	PRODUCTION			VALUE		
		Harvested Acreage	Per Acre	Total	Unit	Per Unit	Total
CUCUMBERS	1962	30	7.0	211	Ton	\$ 87.00	\$ 18,400.
	1961	30	11.2	336	Ton	99.40	33,400.
ENDIVE	1962	296	5.95	1,760	Ton	126.14	222,000.
	1961	288	6.12	1,763	Ton	114.00	201,000.
LETTUCE	1962	3,650	9.53	34,800	Ton	59.57	2,073,000.
	1961	4,740	8.18	38,765	Ton	64.70	2,508,000.
PEAS, TOTAL	1962	347	1.6	562	Ton	111.21	62,500.
	1961	932	1.7	1,486	Ton	84.68	134,300.
Market	1962			47	Ton	234.00	11,000.
	1961			177	Ton	165.50	29,300.
Frozen	1962			515	Ton	100.00	51,500.
	1961			1,309	Ton	80.00	105,000.
PEPPERS, BELL	1962	45	8.2	370	Ton	52.00	19,200.
	1961	38	6.1	232	Ton	150.00	34,800.
PEPPERS, DRY	1962	900	1.5	1,350	Ton	520.00	702,000.
	1961	752	1.53	1,152	Ton	381.00	439,000.
POTATOES	1962	2,643	16.99	44,897	Ton	46.24	2,076,000.
	1961	2,740	14.15	38,770	Ton	47.00	1,822,000.
ROMAINE	1962	117	8.1	944	Ton	55.00	52,000.
	1961	163	12.67	2,066	Ton	62.40	129,000.
TOMATOES, TOTAL	1962	1,086	9.75	10,584	Ton	62.64	663,000.
	1961	908	14.13	12,830	Ton	38.50	494,000.
Market	1962			3,384	Ton	138.60	469,000.
	1961			1,530	Ton	101.30	155,000.
Processing	1962			7,200	Ton	27.00	194,000.
	1961			11,300	Ton	30.00	339,000.
SQUASH, MATURE	1962	57	13.77	785	Ton	26.50	20,800.
	1961	48	14.69	705	Ton	35.30	24,900.
MISCELLANEOUS	1962	268					160,000.
	1961	190					122,700.
TOTAL	1962	25,556					\$ 15,168,200.
	1961	28,376					\$ 16,107,100.

FIELD CROPS: Acreage, Production, Value 1961-62

CROP	Year	PRODUCTION				VALUE	
		Harvested Acreage	Per Acre	Total	Unit	Per Unit	Total
BARLEY	1962	14,322	.844	12,094	Ton	\$ 46.00	\$ 556,000.
	1961	6,150	.517	3,180	Ton	45.60	145,000.
BEANS, TOTAL	1962	12,329	.966	11,919	Ton	204.47	2,437,100.
	1961	8,239	.714	5,896	Ton	283.70	1,672,800.
Baby Limas	1962	627	.83	520	Ton	150.00	78,000.
	1961	375	.29	112	Ton	180.00	20,200.
Small Whites	1962	1,838	1.018	1,872	Ton	170.00	318,000.
	1961	1,537	.597	919	Ton	225.00	207,000.
Pinks	1962	489	.918	449	Ton	190.00	85,300.
	1961	360	.772	278	Ton	200.00	55,600.
Limas	1962	7,134	1.057	7,544	Ton	210.00	1,584,000.
	1961	4,147	.896	3,716	Ton	313.00	1,163,000.
Garbanzos	1962	1,691	.665	1,126	Ton	260.00	293,000.
	1961	649	.231	150	Ton	180.00	27,000.
Fordhook	1962	359	.752	270	Ton	200.00	54,000.
	1961	1,076	.646	696	Ton	280.00	195,000.
Miscellaneous	1962	191	.722	138	Ton	180.00	24,800.
	1961	95	.263	25	Ton	200.00	5,000.
HAY, ALFALFA	1962	12,522	8.6	107,723	Ton	25.00	2,693,000.
	1961	11,400	8.68	99,000	Ton	24.00	2,376,000.
HAY, GRAIN	1962	15,105	1.8	27,189	Ton	26.00	707,000.
	1961	12,570	.914	11,500	Ton	30.00	345,000.
OATS	1962	694	.769	534	Ton	50.00	26,700.
	1961	735	.391	288	Ton	50.00	14,400.
PASTURE, IRRIGATED	1962	8,453				50.00	423,000.
	1961	4,950				50.00	248,000.
PASTURE, OTHER	1962	483,000				4.00	1,932,000.
	1961	505,000				2.00	1,010,000.
SILAGE, CORN	1962	2,447	30.0	73,410	Ton	9.00	661,000.
	1961	3,070	29.9	91,740	Ton	9.00	826,000.
STRAW	1962	60	1.8	108	Ton	20.00	2,200.
	1961	125	1.88	235	Ton	20.00	4,700.
SUGAR BEETS	1962	2,269	22.03	49,978	Ton	14.27	713,000.
	1961	2,597	21.24	55,168	Ton	13.70	756,000.
WHEAT	1962	2,520	.515	1,300	Ton	70.00	91,000.
	1961	694	.195	139	Ton	65.00	9,000.
MISCELLANEOUS	1962	3,520					128,000.
	1961	3,100					107,600.
TOTAL	1962	557,241					\$ 10,370,000.
	1961	558,630					7,514,500.

LIVESTOCK AND POULTRY: Production and Value, 1961-62

ITEM	Year	PRODUCTION		Unit	VALUE	
		No. of Head	Total Liveweight		Per Unit	Total
CATTLE AND CALVES	1962	98,823	795,900	Cwt.	\$ 23.16	\$ 18,433,000.
	1961	88,300	654,000	Cwt.	22.03	14,411,000.
SHEEP AND LAMBS	1962	1,865	2,107	Cwt.	11.30	23,800.
	1961	1,600	1,800	Cwt.	8.25	14,900.
HOGS AND PIGS	1962	1,234	2,893	Cwt.	18.50	53,500.
	1961	2,269	4,100	Cwt.	17.85	73,200.
BROILERS AND FRYERS	1962	80,400	221,100	Lbs.	.35	77,400.
	1961	348,000	1,056,000	Lbs.	.18	202,000.
OTHER CHICKENS	1962	135,517	542,068	Lbs.	.06	32,500.
	1961	86,900	284,000	Lbs.	.07	21,600.
TURKEYS	1962	93,000	1,808,000	Lbs.	.21	380,000.
	1961	103,800	2,130,300	Lbs.	.18	375,000.
MISCELLANEOUS	1962					95,000.
	1961					77,000.
TOTAL	1962					\$ 19,095,200.
	1961					\$ 15,174,700.

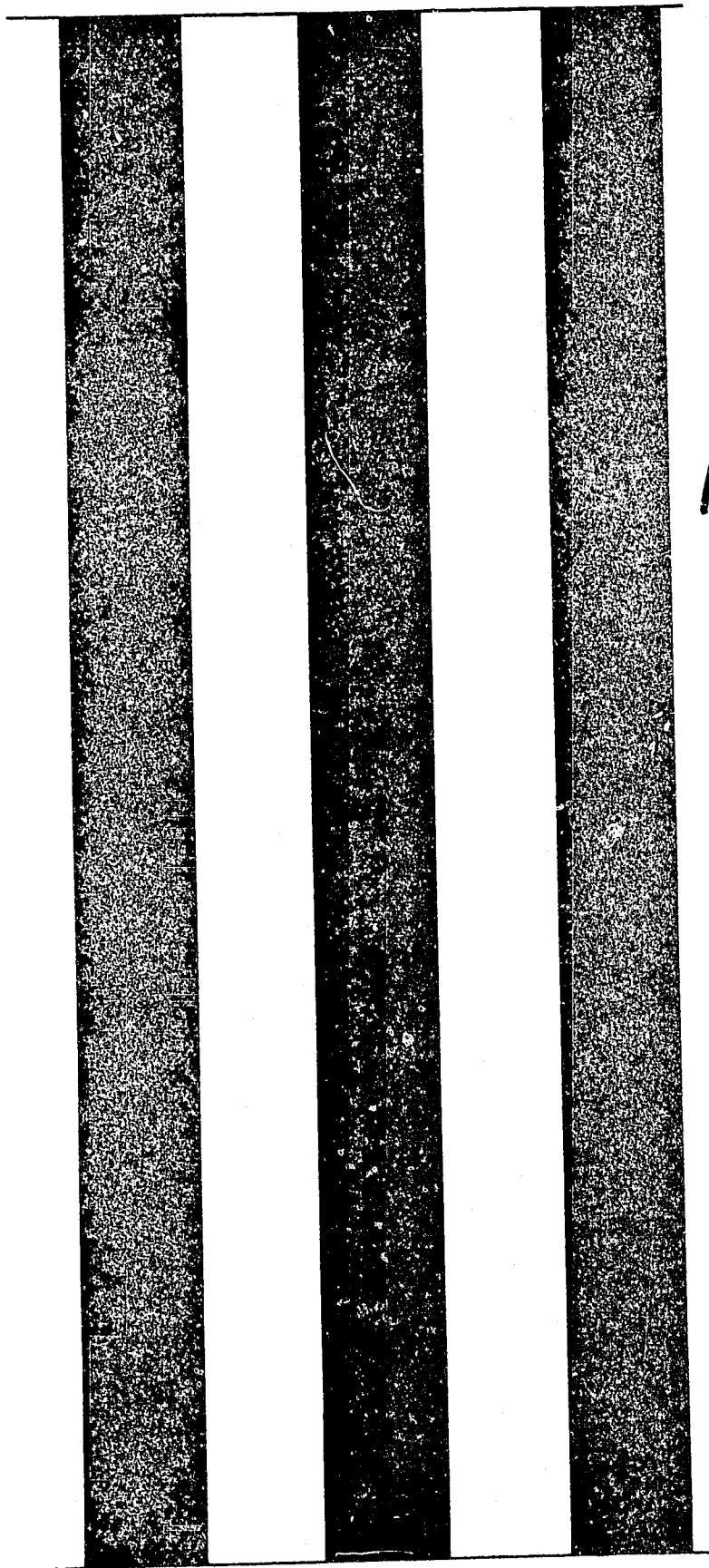
LIVESTOCK AND POULTRY PRODUCTS: Production and Value 1961-62

ITEM	Year	PRODUCTION	Unit	VALUE	
				Per Unit	Total
MILK, TOTAL (Prelim.)	1962	938,650	Cwt.	\$ 5.34	\$ 5,009,000.
	(Revised) 1961	919,120	Cwt.	5.23	4,806,000.
Market	1962	937,000	Cwt.	5.34	5,004,000.
	1961	911,000	Cwt.	5.25	4,783,000.
Manufacturing	1962	1,650	Cwt.	3.04	5,000.
	1961	8,120	Cwt.	2.81	23,000.
EGG	1962	7,494	Lbs.	.52	3,900.
	1961	8,488	Lbs.	.37	3,100.
EGGS, CHICKEN	1962	4,169,039	Doz.	.36	1,501,000.
	1961	3,916,000	Doz.	.39	1,527,000.
MISCELLANEOUS	1962				65,000.
	1961				25,000.
TOTAL	1962				\$ 6,578,900.
	1961				\$ 6,361,100.

S U M M A R Y

	Year	Acreage	§ F. O. B. Value
FRUIT AND NUT CROPS	1962	11,546	\$ 12,080,000.
	1961	12,698	13,812,200.
VEGETABLE CROPS	1962	25,556	15,168,200.
	1961	28,376	16,107,100.
FIELD CROPS	1962	557,241	10,370,000.
	1961	558,630	7,514,500.
NURSERY PRODUCTS	1962	133	1,671,700.
	1961	133	1,711,200.
CUT FLOWERS	1962	474	1,502,000.
	1961	416	1,353,000.
SEED CROPS	1962	5,862	2,909,000.
	1961	5,829	2,998,400.
LIVESTOCK AND POULTRY	1962		19,095,200.
	1961		15,174,700.
LIVESTOCK AND POULTRY PRODUCTS	1962		6,578,900.
	1961		6,361,100.
TOTAL	1962	600,817	\$ 69,375,000.
	1961	606,082	\$ 65,032,200.

§ This is NOT the farm value but includes value after being graded, packed and sold in Santa Barbara County points.

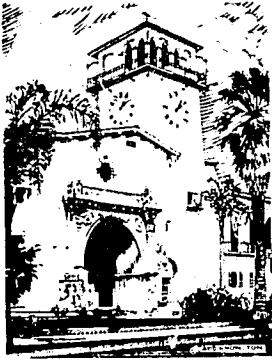


1963



Agricultural Crop  
Report  
**1963**

DEPARTMENT OF AGRICULTURE  
SANTA BARBARA COUNTY, CALIFORNIA



COUNTY OF SANTA BARBARA  
CALIFORNIA  
DEPARTMENT OF AGRICULTURE

WALTER S CUMMINGS  
AGRICULTURAL COMMISSIONER

ROGER W ALLEN  
MARCUS E CRAVENS  
DEPUTY COMMISSIONERS

118 EAST FIGUEROA STREET  
SANTA BARBARA CALIFORNIA  
WOODLAND 6-1611 EXT 274  
PO BOX 127

Mr. Charles Paul, Director  
State of California  
Department of Agriculture  
and  
The Honorable Board of Supervisors  
Santa Barbara County

Gentlemen:

The acreages shown in this report are the planted and bearing acres of fruit and nut crops and harvested acres of field and vegetable crops. The gross value shown is the F.O.B. value at first point of sale, which includes the cost of harvesting, grading and packaging, as well as the cost of production. Most acreage and all production and value figures have been rounded. This report does NOT indicate returns or profits to the producer or farmer. It does, however, show the amount of new wealth contributed by agriculture to the economy of Santa Barbara County. The total value of agricultural production continued at a high level even in the face of continued urbanization of farm lands.

My sincere thanks are extended to the many individuals, companies, and organizations for their very fine cooperation in making available the necessary data from which this crop report is compiled.

Sincerely yours,

Walter S. Cummings  
Agricultural Commissioner

VEGETABLE CROPS: Acreage, Production, Value 1962-63

Crop	Year	Harvested Acreage	Production			Value	
			Per Acre	Total	Unit	Per Unit	Total
Anise	1963	95	8.6	820	Ton	\$ 90.00	\$ 73,800.
	1962	86	8.67	746	Ton	93.00	69,400.
Artichokes	1963	810	3.3	2,670	Ton	205.00	547,000.
	1962	1,038	3.12	3,244	Ton	185.17	600,700.
Beans: Lima, Frozen	1963	1,760	1.8	3,170	Ton	161.00	510,000.
	1962	2,750	1.5	4,126	Ton	160.00	660,000.
Broccoli, Total	1963	11,000	3.04	33,400	Ton	138.05	4,611,000.
	1962	8,401	2.96	24,899	Ton	143.70	3,578,000.
Market	1963			10,400	Ton	147.00	1,520,000.
	1962			10,854	Ton	155.00	1,682,000.
Frozen	1963			23,000	Ton	134.00	3,082,000.
	1962			14,045	Ton	135.00	1,896,000.
Cabbage	1963	375	10.5	3,940	Ton	58.80	232,000.
	1962	378	11.57	4,372	Ton	54.89	240,100.
Carrots	1963	980	18.4	18,000	Ton	52.00	936,000.
	1962	1,559	20.0	31,208	Ton	49.99	1,560,000.
Cauliflower, Total	1963	940	5.2	4,910	Ton	160.69	789,000.
	1962	838	5.4	4,529	Ton	159.64	723,000.
Market	1963			3,850	Ton	170.00	655,000.
	1962			3,615	Ton	172.06	622,000.
Frozen	1963			1,060	Ton	126.00	134,000.
	1962			914	Ton	110.50	101,000.
Celery	1963	900	26.9	24,200	Ton	68.00	1,646,000.
	1962	1,006	27.0	27,164	Ton	59.50	1,616,000.
Endive	1963	350	5.8	2,030	Ton	120.00	243,000.
	1962	296	5.95	1,760	Ton	126.14	222,000.
Lettuce	1963	3,360	8.0	26,900	Ton	62.00	1,668,000.
	1962	3,650	9.53	34,800	Ton	59.57	2,073,000.
Peas, Total	1963	400	1.6	642	Ton	72.88	46,790.
	1962	347	1.6	562	Ton	111.21	62,500.
Market	1963			32	Ton	221.50	7,090.
	1962			47	Ton	234.00	11,000.
Frozen	1963			610	Ton	65.00	39,700.
	1962			515	Ton	100.00	51,500.
Peppers, Dry	1963	1,330	1.2	1,600	Ton	525.00	840,000.
	1962	900	1.5	1,350	Ton	520.00	702,000.



VEGETABLE CROPS (Cont.)

Crop	Year	Harvested Acreage	Production			Value	
			Per Acre	Total	Unit	Per Unit	Total
Potatoes	1963	2,170	14.0	30,400	Ton	\$ 60.00	\$ 1,824,000.
	1962	2,643	16.99	44,897	Ton	46.24	2,076,000.
Romaine	1963	225	12.0	2,720	Ton	45.00	122,000.
	1962	117	8.1	944	Ton	55.00	52,000.
Tomatoes, Total	1963	425	5.34	2,270	Ton	98.19	222,000.
	1962	1,086	9.75	10,584	Ton	62.64	663,000.
Market	1963			1,440	Ton	140.00	202,000.
	1962			3,384	Ton	138.60	469,000.
Processing	1963			830	Ton	25.00	20,800.
	1962			7,200	Ton	27.00	194,000.
Squash, Mature	1963	55	14.1	775	Ton	27.00	20,900.
	1962	57	13.77	785	Ton	26.50	20,800.
Miscellaneous	1963	645					357,700.
	1962	268					249,700.
TOTAL	1963	25,894					\$14,689,990.
	1962	25,556					\$15,168,200.

NURSERY PRODUCTS: Production area, Sales and Value 1962-63

Item	Year	Production Area		Quantity		Value	
		House Sq.Ft.	Field Acres	Sold By Producers	Unit	Per Unit	Total
Citrus and Subtropical	1963	12,700	1	12,330	Plant	\$2.30	\$ 28,400.
	1962	6,800		6,550	Plant	2.25	14,700.
Ornamental Trees and Shrubs	1963	184,680	84				750,000.
	1962	77,600	80				775,000.
Herbaceous Perennials	1963	959,662	58				413,000.
	1962	943,840	53				253,000.
Indoor Decorative	1963	1,139,600					397,000.
	1962	1,286,900					531,000.
Miscellaneous	1963	6,000	2				26,000.
	1962	2,000	5				8,000.
TOTAL	1963	2,302,642	145				\$1,714,400.
	1962	2,317,140	138				\$1,671,700.
Cut Flowers	1963	2,390,590	545				\$1,300,000.
	1962	1,562,220	475				\$1,502,000.

LIVESTOCK AND POULTRY: Production and Value 1962-63

Item	Year	Production			Value	
		No. of Head	Total Liveweight	Unit	Per Unit	Total
Cattle and Calves	1963	85,100	677,000	Cwt.	\$ 21.50	\$14,550,000.
	1962	98,823	795,900	Cwt.	23.16	18,433,000.
Sheep and Lambs	1963	830	915	Cwt.	18.60	17,000.
	1962	1,865	2,107	Cwt.	11.30	23,800.
Hogs and Pigs	1963	3,000	6,550	Cwt.	18.00	118,000.
	1962	1,234	2,893	Cwt.	18.50	53,500.
Broilers and Fryers	1963	29,400	95,600	Lbs.	.17	16,300.
	1962	80,400	221,100	Lbs.	.35	77,400.
Other Chickens	1963	190,000	665,000	Lbs.	.07	46,600.
	1962	135,517	542,068	Lbs.	.06	32,500.
Turkeys	1963	89,500	2,209,000	Lbs.	.23	508,000.
	1962	93,000	1,808,000	Lbs.	.21	380,000.
Miscellaneous	1963					250,000.
	1962					95,000.
TOTAL	1963					\$15,511,900.
	1962					\$10,095,200.

LIVESTOCK AND POULTRY PRODUCTS: Production and Value 1962-63

Item	Year	Production	Unit	Value	
				Per Unit	Total
Milk, Total (Prelim.) (Revised)	1963	925,260	Cwt.	\$ 5.19	\$ 4,799,600.
	1962	934,440	Cwt.	5.32	4,968,200.
Market	1963	924,000	Cwt.	5.19	4,796,000.
	1962	933,000	Cwt.	5.32	4,964,000.
Manufacturing	1963	1,260	Cwt.	2.86	3,600.
	1962	1,440	Cwt.	2.92	4,200.
Wool	1963	7,500	Lbs.	0.50	3,750.
	1962	7,494	Lbs.	0.52	3,900.
Eggs, Chicken	1963	4,621,000	Doz.	0.34	1,571,000.
	1962	4,169,039	Doz.	0.36	1,501,000.
Miscellaneous	1963				40,000.
	1962				65,000.
TOTAL	1963				\$ 6,414,350.
	1962				\$ 6,538,100.

FIELD CROPS: Acreage, Production, Value 1962-63

Crop	Year	Harvested Acreage	Production		Unit	Value	
			Per Acre	Total		Per Unit	Total
Barley	1963	11,100	1.	11,100	Ton	\$ 48.00	\$ 533,000.
	1962	14,322	.844	12,094	Ton	46.00	556,000.
Beans, Total	1963	15,100	.813	12,280	Ton	216.94	2,664,000.
	1962	12,329	.966	11,919	Ton	204.47	2,437,100.
Baby Limas	1963	755	.85	645	Ton	146.00	94,200.
	1962	627	.83	520	Ton	150.00	78,000.
Small Whites	1963	2,600	1.	2,600	Ton	170.00	442,000.
	1962	1,838	1.018	1,872	Ton	170.00	318,000.
Pinks	1963	470	.85	400	Ton	180.00	72,000.
	1962	489	.918	449	Ton	190.00	85,300.
Limas	1963	6,930	.9	6,240	Ton	235.00	1,466,000.
	1962	7,134	1.057	7,544	Ton	210.00	1,584,000.
Garbanzos	1963	3,900	.5	1,950	Ton	255.00	497,000.
	1962	1,691	.665	1,126	Ton	260.00	293,000.
Fordhook	1963	325	1.15	375	Ton	210.00	78,800.
	1962	359	.752	270	Ton	200.00	54,000.
Miscellaneous	1963	120	.6	70	Ton	200.00	14,000.
	1962	191	.722	138	Ton	180.00	24,800.
Hay, Alfalfa	1963	11,500	8.2	94,300	Ton	30.00	2,829,000.
	1962	12,522	8.6	107,723	Ton	25.00	2,693,000.
Hay, Grain	1963	14,100	2.	28,200	Ton	28.00	790,000.
	1962	15,105	1.8	27,189	Ton	26.00	707,000.
Oats	1963	920	.75	690	Ton	50.00	34,500.
	1962	694	.769	534	Ton	50.00	26,700.
Pasture, Irrigated	1963	7,000				50.00	350,000.
	1962	8,453				50.00	423,000.
Pasture, Other	1963	487,000				4.00	1,948,000.
	1962	483,000				4.00	1,932,000.
Silage, Corn	1963	2,800	30.	84,000	Ton	10.00	840,000.
	1962	2,447	30.	73,410	Ton	9.00	661,000.
Straw	1963	300	1.6	480	Ton	20.00	9,600.
	1962	60	1.8	108	Ton	20.00	2,200.
Sugar Beets	1963	2,320	23.7	55,000	Ton	15.75	866,000.
	1962	2,269	22.03	49,978	Ton	14.27	713,000.

FIELD CROPS (Cont.)

Crop	Year	Harvested Acreage	Production			Value	
			Per Acre	Total	Unit	Per Unit	Total
Wheat	1963	2,690	.5	1,350	Ton	\$ 70.00	\$ 94,500.
	1962	2,520	.515	1,300	Ton	70.00	91,000.
Miscellaneous	1963	3,500					141,000.
	1962	3,520					128,000.
TOTAL	1963	558,330					\$ 11,099,600.
	1962	557,241					\$ 10,370,000.

FRUIT AND NUT CROPS: Acreage, Production, Value 1962-63

Crop	Year	Acreage		Production			Value	
		Planted	Bearing	Per Acre	Total	Unit	Per Unit	Total
Avocados	1963	2,047	1,432	2.0	2,860	Ton	\$ 268.00	\$ 766,000.
	1962	1,974	1,329	3.5	4,700	Ton	240.00	1,128,000.
Lemons, Total	1963	6,477	6,163	9.4	57,700	Ton	135.47	7,816,500.
	1962	6,662	6,191	12.0	74,398	Ton	88.93	6,616,000.
Market	1963				42,800	Ton	160.00	6,848,000.
	1962				43,056	Ton	130.00	5,597,000.
Processing	1963				14,900	Ton	65.00	968,500.
	1962				31,342	Ton	32.50	1,019,000.
Oranges	1963	82	57	8.0	455	Ton	180.00	81,900.
	1962	87	61	6.55	400	Ton	125.00	50,000.
Strawberries, Total	1963	820	820	12.97	10,640	Ton	358.55	3,815,000.
	1962	827	827	12.95	10,710	Ton	327.54	3,508,000.
Market	1963				6,570	Ton	440.00	2,891,000.
	1962				6,450	Ton	392.00	2,528,000.
Processing	1963				4,070	Ton	227.00	924,000.
	1962				4,260	Ton	230.00	980,000.
Walnuts	1963	1,738	1,637	.51	840	Ton	460.00	386,000.
	1962	1,797	1,619	.817	1,324	Ton	550.00	728,000.
Miscellaneous	1963	188	126					60,000.
	1962	199	135					50,000.
TOTAL	1963	11,352	10,235					\$12,925,400.
	1962	11,546	10,162					\$12,080,000.

SEED CROPS: Acreage, Production, Value 1962-63

Crop	Year	Harvested Acreage	Production			Value	
			Per Acre	Total	Unit	Per Unit	Total
Bean, Seed	1963	3,940	.9	3,550	Ton	\$ 280.00	\$ 994,000.
	1962	3,535	.837	2,962	Ton	260.00	771,000.
Flower Seed	1963	1,720					2,064,000.
	1962	1,938					1,976,000.
Mustard	1963	240	.5	120	Ton	150.00	18,000.
	1962	95	1.24	118	Ton	148.00	17,000.
Vegetable Seed	1963	100					100,000.
	1962	74					80,000.
Miscellaneous	1963	330					43,000.
	1962	220					65,000.
TOTAL	1963	6,330					\$ 3,111,500.
	1962	5,862					\$ 2,909,000.

S U M M A R Y  
1962-1963

	Year	Acreage	\$ F.O.B. Value
Fruit and Nut Crops	1963	11,352	\$ 12,925,400.
	1962	11,546	12,080,000.
Vegetable Crops	1963	25,894	14,689,990.
	1962	25,556	15,168,200.
Field Crops	1963	558,330	11,099,600.
	1962	557,241	10,370,000.
Nursery Products	1963	145	1,714,400.
	1962	138	1,671,700.
Cut Flowers	1963	543	1,366,000.
	1962	474	1,502,000.
Seed Crops	1963	6,330	3,218,000.
	1962	5,862	2,909,000.
Livestock and Poultry	1963		15,511,900.
	1962		19,095,200.
Livestock and Poultry Products	1963		6,414,350.
	1962		6,538,100.
TOTAL	1963	602,594	\$ 66,929,640.
	1962	600,817	\$ 69,334,200.

This is NOT the farm value but includes value after being graded, packed and sold in Santa Barbara County points.

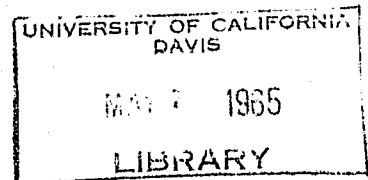


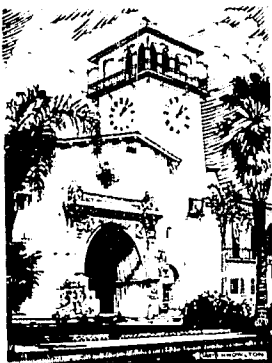
1964



Agricultural Crop  
Report  
**1964**

DEPARTMENT OF AGRICULTURE  
SANTA BARBARA COUNTY, CALIFORNIA





COUNTY OF SANTA BARBARA  
CALIFORNIA  
DEPARTMENT OF AGRICULTURE

WALTER S. CUMMINGS  
AGRICULTURAL COMMISSIONER

ROGER W. ALLEN  
MARCUS E. CRAVENS  
DEPUTY COMMISSIONERS

4580 CALLE REAL  
SANTA BARBARA, CALIFORNIA 93102  
TELEPHONES: 967-0137 - 967-0138  
P.O. BOX 127

Mr. Charles Paul, Director  
State Department of Agriculture  
and  
The Honorable Board of Supervisors  
Santa Barbara County

Gentlemen:

The acreages shown in this report are the planted and bearing acres of fruit and nut crops and the harvested acres of field and vegetable crops. Most acreage and all production and value figures have been rounded. Some of the figures from the 1963 crop report have been revised and are indicated by \*. The gross value shown is the F.O.B. value at first point of sale, which includes the cost of harvesting, grading and packaging, as well as the cost of production. This report does NOT indicate returns or profits to the producer or farmer. It does, however, show the amount of new wealth contributed by agriculture to the economy of Santa Barbara County. The total value of agricultural production reached an all time high in 1964 of \$71,282,120. This was accomplished mainly by increased production per acre. The total acreage in farm lands continued to decrease as urbanization of such lands continued, particularly in the south coastal area of the county.

My sincere thanks are extended to the many individuals, companies, and organizations for their fine cooperation in making available the necessary data from which this crop report is compiled.

Sincerely yours,

Walter S. Cummings  
Agricultural Commissioner



VEGETABLE CROPS: Acreage, Production, Value 1963-64

Crop	Year Harvested	Harvested Acreage	Production		Unit	Value	
			Per Acre	Total		Per Unit	Total
Anise	1964	50	9.4	470	Ton	\$ 93.00	\$ 43,700.
	1963	95	8.6	820	Ton	90.00	73,800.
Artichokes	1964	900	3.3	2,950	Ton	209.00	617,000.
	1963	810	3.3	2,670	Ton	205.00	547,000.
Beans: Lima, Frozen	1964	2,100	1.7	3,570	Ton	160.00	571,000.
	1963	1,760	1.8	3,170	Ton	161.00	510,000.
Broccoli, Total	1964	8,909	3.22	28,700	Ton	144.29	4,141,000.
	1963	11,000	3.04	33,400	Ton	138.05	4,611,000.
Market	1964			13,300	Ton	155.00	2,062,000.
	1963			10,400	Ton	147.00	1,529,000.
Frozen	1964			15,400	Ton	135.00	2,079,000.
	1963			23,000	Ton	134.00	3,082,000.
Cabbage	1964	460	10.4	4,780	Ton	62.80	300,000.
	1963	375	10.5	3,940	Ton	58.80	232,000.
Carrots	1964	1,100	22.1	24,300	Ton	54.00	1,312,000.
	1963	980	18.4	18,000	Ton	52.00	936,000.
Cauliflower, Total	1964	1,310	5.78	7,580	Ton	171.50	1,300,000.
	1963	940	5.2	4,910	Ton	160.69	789,000.
Market	1964			5,660	Ton	185.00	1,047,000.
	1963			3,850	Ton	170.00	655,000.
Frozen	1964			1,920	Ton	132.00	253,000.
	1963			1,060	Ton	126.00	134,000.
Celery	1964	990	27.3	27,000	Ton	78.00	2,106,000.
	1963	900	26.9	24,200	Ton	68.00	1,646,000.
Endive	1964	290	5.7	1,650	Ton	144.50	238,000.
	1963	350	5.8	2,030	Ton	120.00	243,000.
Lettuce	1964	2,740	9.5	26,000	Ton	62.50	1,625,000.
	1963	3,360	8.0	26,900	Ton	62.00	1,668,000.
Peas, Total	1964	560	1.5	828	Ton	91.43	75,700.
	1963	400	1.6	642	Ton	72.88	46,790.
Market	1964			78	Ton	248.70	19,400.
	1963			32	Ton	221.50	7,090.
Frozen	1964			750	Ton	75.00	56,300.
	1963			610	Ton	65.00	39,700.
Peppers, Dry	1964	890	1.0	890	Ton	530.00	472,000.
	1963	1,330	1.2	1,600	Ton	525.00	840,000.

VEGETABLE CROPS Continued

Crop	Year Harvested	Harvested Acreage	Production		Unit	Value	
			Per Acre	Total		Per Unit	Total
Potatoes	1964	2,550	17.1	43,600	Ton	\$ 70.00	\$3,052,000.
	1963	2,170	14.0	30,400	Ton	60.00	1,824,000.
Romaine	1964	310	11.8	3,660	Ton	49.80	182,000.
	1963	225	12.0	2,720	Ton	45.00	122,000.
Tomatoes	1964	170	8.0	1,360	Ton	135.00	184,000.
	1963	425	5.3	2,270	Ton	98.19	222,800.
Squash, Mature	1964	30	17.0	510	Ton	30.00	15,300.
	1963	55	14.1	775	Ton	27.00	20,900.
Miscellaneous	1964	830					400,000.
	1963	645					357,700.
TOTAL	1964	24,189					\$16,634,700.
	1963	25,894					\$14,689,990.

NURSERY PRODUCTS: Production area, Sales and Value 1963-64

Item	Year	Production Area		Quantity	Unit	Value	
		House Sq.Ft.	Field Acres	Sold By Producers		Per Unit	Total
Citrus and Subtropical	1964	17,300		10,858	Plt	\$ 2.25	\$ 24,400.
	1963	12,700	1	12,330	Plt	2.30	28,400.
Ornamental Trees and Shrubs	1964	161,000	83				748,000.
	1963	184,680	84				750,000.
Herbaceous Perennials	1964	922,000	72				440,000.
	1963	959,662	58				413,000.
Indoor Decorative	1964	1,070,000					552,000.
	1963	1,139,600					497,000.
Miscellaneous	1964	91,500	2				43,000.
	1963	6,000	2				26,000.
TOTAL	1964	2,261,800	157				\$1,807,400.
	1963	2,302,642	145				\$1,714,400.
Cut Flowers	1964	1,874,000	451				\$1,922,000.
	1963	2,390,590	545				\$1,366,000.

FIELD CROPS: Acreage, Production, Value 1963-64

Crop	Year Harvested	Acreage	Production		Unit	Value	
			Per Acre	Total		Per Unit	Total
Barley	1964	8,810	.55	4,850	Ton	\$ 47.50	\$ 230,000.
	1963	11,100	1.	11,100	Ton	48.00	533,000.
Beans, Total	1964	11,169	.63	7,052	Ton	244.51	1,724,280.
	1963	15,100	.813	12,280	Ton	216.94	2,664,000.
Baby Limas	1964	200	.5	100	Ton	140.00	14,000.
	1963	755	.85	645	Ton	146.00	94,200.
Small Whites	1964	1,300	.8	1,040	Ton	204.00	212,000.
	1963	2,600	1.	2,600	Ton	170.00	442,000.
Pinks	1964	165	.65	107	Ton	175.00	18,700.
	1963	470	.85	400	Ton	180.00	72,000.
Limas	1964	6,140	.8	4,910	Ton	253.00	1,242,000.
	1963	6,930	.9	6,240	Ton	235.00	1,466,000.
Garbanzos	1964	3,270	.25	817	Ton	270.00	221,000.
	1963	3,900	.5	1,950	Ton	255.00	497,000.
Fordhook	1964	62	1.	62	Ton	220.00	13,700.
	1963	325	1.15	375	Ton	210.00	78,800.
Miscellaneous	1964	32	.5	16	Ton	180.00	2,880.
	1963	120	.6	70	Ton	200.00	14,000.
Hay, Alfalfa	1964	11,300	8.	90,400	Ton	27.00	2,441,000.
	1963	11,500	8.2	94,300	Ton	30.00	2,829,000.
Hay, Grain	1964	13,000	1.	13,000	Ton	25.00	325,000.
	1963	14,100	2.	28,200	Ton	28.00	790,000.
Oats	1964	865	.5	459	Ton	53.00	24,300.
	1963	920	.75	690	Ton	50.00	34,500.
Pasture, Irrigated	1964	8,070				50.00	404,000.
	1963	7,000				50.00	350,000.
Pasture, Other	1964	588,000				3.50	2,058,000.
	1963	*587,000				4.00	*2,348,000.
Silage, Corn	1964	2,900	33.	95,700	Ton	10.00	950,000.
	1963	2,800	30.	84,000	Ton	10.00	840,000.
Straw	1964	160	.5	80	Ton	21.00	1,680.
	1963	300	1.6	480	Ton	20.00	9,600.
Sugar Beets	1964	4,500	24.2	109,000	Ton	11.60	1,264,000.
	1963	2,320	23.7	55,000	Ton	*12.50	*688,000.

FIELD CROPS Continued

Crop	Year Harvested	Acreage	Production		Unit	Value	
			Per Acre	Total		Per Unit	Total
Wheat	1964	400	.3	120	Ton	\$ 68.00	\$ 8,160.
	1963	2,690	.5	1,350	Ton	70.00	94,500.
Miscellaneous	1964	4,740					208,000.
	1963	3,500					141,000.
TOTAL	1964	653,914				\$	9,638,420.
	1963	*658,330				* \$	11,321,600.

\* Revised

FRUIT AND NUT CROPS: Acreage, Production, Value 1963-64

Crop	Year	Acreage		Production			Value	
		Planted	Bearing	Per Acre	Total	Unit	Per Unit	Total
Avocados	1964	2,213	1,622	3.57	5,790	Ton	\$262.00	\$ 1,517,000.
	1963	*2,127	*1,502	1.9	2,860	Ton	268.00	766,000.
Lemons, Total	1964	6,281	6,078	13.1	79,400	Ton	93.79	7,447,000.
	1963	6,477	6,163	9.4	57,700	Ton	135.47	7,816,500.
Market	1964				44,000	Ton	125.00	5,500,000.
	1963				42,800	Ton	160.00	6,848,000.
Processing	1964				35,400	Ton	55.00	1,947,000.
	1963				14,900	Ton	65.00	968,500.
Oranges	1964	87	67	9.2	620	Ton	190.00	118,000.
	1963	82	57	8.0	455	Ton	180.00	81,900.
Strawberries, Total	1964	718	718	17.5	12,580	Ton	378.62	4,763,000.
	1963	820	820	12.97	10,640	Ton	358.55	3,815,000.
Market	1964				7,610	Ton	443.00	3,371,000.
	1963				6,570	Ton	440.00	2,891,000.
Processing	1964				4,970	Ton	280.00	1,392,000.
	1963				4,070	Ton	227.00	924,000.
Walnuts	1964	1,904	1,799	.58	1,040	Ton	455.00	473,000.
	1963	*1,849	*1,748	.48	840	Ton	460.00	386,000.
Miscellaneous	1964	117	60					66,000.
	1963	*130	*86					60,000.
TOTAL	1964	11,320	10,352					\$14,384,000.
	1963	*11,485	*10,376					\$12,925,400.

\*Revised

LIVESTOCK AND POULTRY: Production and Value, 1963-64

Item	Year	Production		Unit	Value	
		No. of Head	Total Liveweight		Per Unit	Total
Cattle and Calves	1964	96,800	745,000	Cwt.	\$ 20.40	\$ 15,198,000.
	1963	85,100	677,000	Cwt.	21.50	14,556,000.
Sheep and Lambs	1964	20,484	20,700	Cwt.	16.75	347,000.
	1963	830	915	Cwt.	18.60	17,000.
Hogs and Pigs	1964	3,200	6,280	Cwt.	17.50	110,000.
	1963	3,000	6,550	Cwt.	18.00	118,000.
Broilers and Fryers	1964	26,500	86,100	Lbs.	.18	15,500.
	1963	29,400	95,600	Lbs.	.17	16,300.
Other Chickens	1964	194,000	776,000	Lbs.	.06	46,600.
	1963	190,000	665,000	Lbs.	.07	46,600.
Turkeys	1964	91,000	1,783,000	Lbs.	.21	374,000.
	1963	89,500	2,209,000	Lbs.	.23	508,000.
Miscellaneous	1964					100,000.
	1963					250,000.
TOTAL	1964					\$ 16,191,100.
	1963					\$ 15,511,900.

LIVESTOCK AND POULTRY PRODUCTS: Production and Value, 1963-64

Item	Year	Production	Unit	Value	
				Per Unit	Total
Milk, Total (Prelim.) (Revised)	1964	892,378	Cwt.	\$ 5.24	\$ 4,675,500.
	1963	915,310	Cwt.	5.19	4,747,900.
Market	1964	892,000	Cwt.	5.24	4,674,000.
	1963	914,000	Cwt.	5.19	4,744,000.
Manufacturing	1964	378	Cwt.	3.97	1,500.
	1963	1,310	Cwt.	2.98	3,900.
Wool	1964	250,000	Lbs.	0.42	105,000.
	1963	7,500	Lbs.	0.50	3,750.
Eggs, Chicken	1964	6,007,000	Doz.	0.33	1,982,000.
	1963	4,621,000	Doz.	0.34	1,571,000.
Miscellaneous	1964				41,000.
	1963				40,000.
TOTAL	1964				\$ 6,803,500.
	1963				\$ 6,414,350.

SEED CROPS: Acreage, Production, Value 1963-64

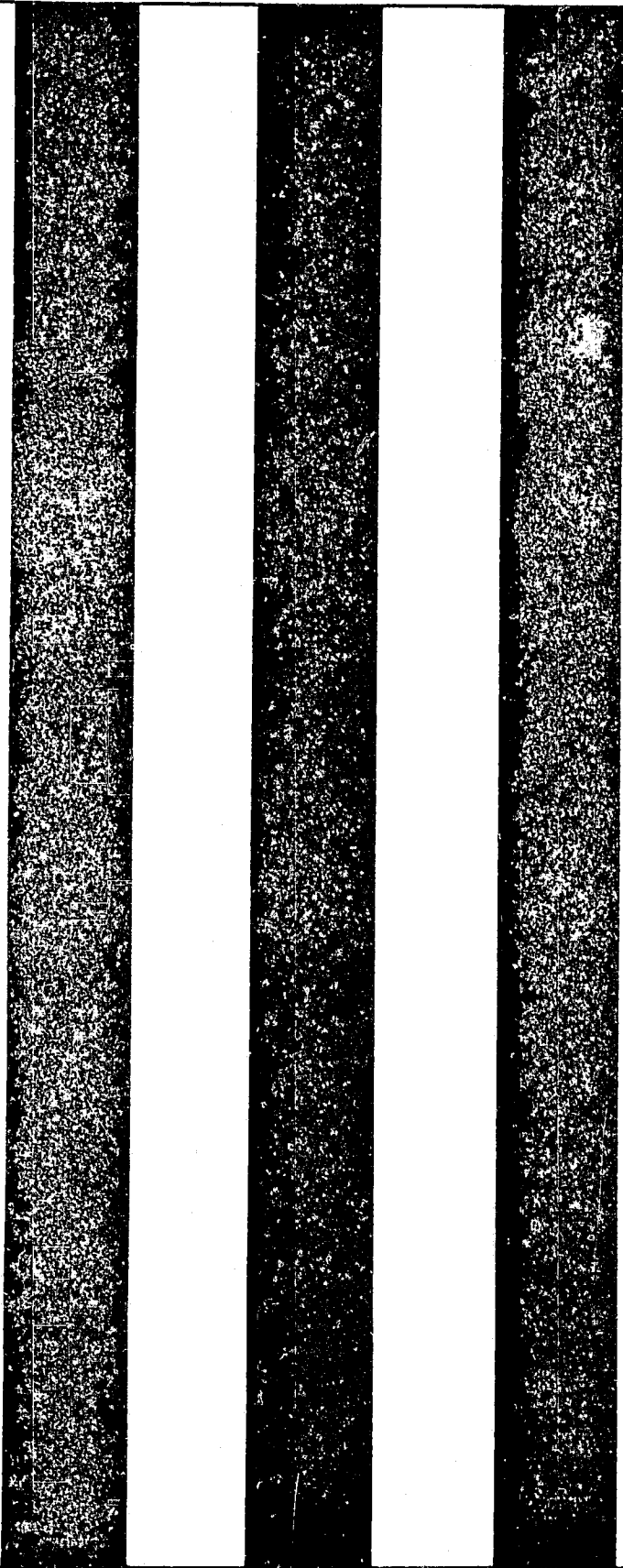
Crop	Year	Harvested Acreage	Production		Unit	Value	
			Per Acre	Total		Per Unit	Total
Bean, Seed	1964	6,680	.75	5,010	Ton	\$ 275.00	\$1,378,000.
	1963	3,940	.9	3,550	Ton	280.00	994,000.
Flower Seed	1964	1,950					2,291,000.
	1963	1,720					2,064,000.
Mustard	1964	180	.35	63	Ton	190.00	12,000.
	1963	240	.5	120	Ton	150.00	18,000.
Vegetable Seed	1964	130					104,000.
	1963	100					100,000.
Alfalfa Seed	1964	680	.23	156	Ton	660.00	103,000.
	1963	320	.2	64	Ton	640.00	41,000.
Miscellaneous	1964	365					13,000.
	1963	10					1,000.
TOTAL	1964	9,985					\$3,901,000.
	1963	6,330					\$3,218,000.

S U M M A R Y  
1963-64

	Year	Acreage	∅ F.O.B. Value
Fruit and Nut Crops	1964	11,329	\$14,384,000.
	1963	*11,485	12,925,400.
Vegetable Crops	1964	24,189	16,634,700.
	1963	25,894	14,689,990.
Field Crops	1964	653,914	9,638,420.
	1963	*658,330	*11,321,600.
Nursery Products	1964	157	1,807,400.
	1963	145	1,714,400.
Cut Flowers	1964	451	1,922,000.
	1963	543	1,366,000.
Seed Crops	1964	9,985	3,901,000.
	1963	6,330	3,218,000.
Livestock and Poultry	1964		16,191,100.
	1963		15,511,900.
Livestock and Poultry Products	1964		6,803,500.
	1963		6,414,350.
TOTAL	1964	700,025	\$71,282,120.
	1963	*702,727	*\$67,161,640.

\*Revised

∅ This is NOT the farm value but includes value after being graded, packed and sold in Santa Barbara County points.

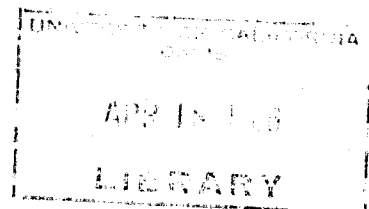
Three vertical black bars of varying widths are positioned on the left side of the page. The bars are solid black and extend from near the top to near the bottom of the page. The middle bar is the narrowest, while the two outer bars are wider and have a slightly grainy texture.

1965



Agricultural Crop  
Report  
**1965**

DEPARTMENT OF AGRICULTURE  
SANTA BARBARA COUNTY, CALIFORNIA





Mr. Charles Paul, Director  
State Department of Agriculture  
and  
The Honorable Board of Supervisors  
Santa Barbara County

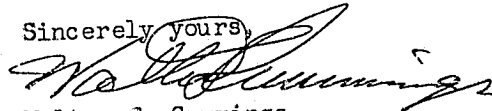
Gentlemen:

The acreages shown in this report are the planted and bearing acres of fruit and nut crops and the harvested acres of field and vegetable crops. Most acreage and all production and value figures have been rounded. Some of the figures from the 1964 crop report have been revised and are indicated by \*. The gross value shown is the F.O.B. value at first point of sale, which includes the cost of harvesting, grading and packaging, as well as the cost of production. This report does NOT indicate returns or profits to the producer or farmer. It does, however, show the amount of new wealth contributed by agriculture to the economy of Santa Barbara County. The total value of agricultural production reached an all time high in 1965 of \$78,806,250. It is estimated by economists that this income would produce an economic impact of \$300,000,000 to the total economy. Agriculture continues to be one of the basic factors in the economy of Santa Barbara County.

The farmers in 1965 were confronted with an extremely confused and expensive labor problem, caused by the ending of the Bracero program. Serious labor shortages and inefficient labor resulted in reduced production of some crops. Over 100 acres of strawberries were disced under without being picked due to lack of labor to harvest them. Many growers spent considerable time and money trying to recruit labor as far away as Texas, Mississippi, and Arkansas. The turnover of agricultural labor was tremendous. These factors plus the inefficiency of much of the labor force resulted in greatly increasing the cost of production of many crops.

My sincere thanks are extended to the many individuals, companies, organizations and the State Department of Agriculture for their fine cooperation in making available the necessary data from which this crop report is compiled.

Sincerely yours,



Walter S. Cummings  
Agricultural Commissioner  
County of Santa Barbara

VEGETABLE CROPS: Acreage, Production, Value 1964-65

Crop	Year	Harvested Acreage	Production		Unit	Value	
			Per Acre	Total		Per Unit	Total
Anise	1965	69	13.1	904	Ton \$	100.00 \$	90,400.
	1964	50	9.4	470	Ton \$	93.00 \$	43,700.
Artichokes	1965	735	3.3	2,430	Ton	175.00	425,000.
	1964	900	3.3	2,950	Ton	209.00	617,000.
Beans: Lima, Frozen	1965	2,460	1.5	3,690	Ton	163.00	602,000.
	1964	2,100	1.7	3,570	Ton	160.00	571,000.
Broccoli, Total	1965	8,400	3.62	30,400	Ton	162.14	4,929,000.
	1964	8,909	3.22	28,700	Ton	144.29	4,141,000.
Market	1965			16,200	Ton	173.40	2,809,000.
	1964			13,300	Ton	155.00	2,062,000.
Frozen	1965			14,200	Ton	149.00	2,120,000.
	1964			15,400	Ton	135.00	2,079,000.
Cabbage	1965	610	13.18	8,040	Ton	63.80	513,000.
	1964	460	10.4	4,780	Ton	62.80	300,000.
Carrots	1965	1,630	20.0	32,600	Ton	65.00	2,119,000.
	1964	1,100	22.1	24,300	Ton	54.00	1,312,000.
Cauliflower, Total	1965	1,020	6.22	6,349	Ton	189.69	1,203,600.
	1964	1,310	5.78	7,580	Ton	171.50	1,300,000.
Market	1965			5,740	Ton	193.00	1,108,000.
	1964			5,660	Ton	185.00	1,047,000.
Frozen	1965			609	Ton	157.00	95,600.
	1964			1,920	Ton	132.00	253,000.
Celery	1965	1,220	27.0	33,000	Ton	80.00	2,640,000.
	1964	990	27.3	27,000	Ton	78.00	2,106,000.
Endive	1965	200	9.75	1,950	Ton	150.00	293,000.
	1964	290	5.7	1,650	Ton	144.50	238,000.
Lettuce	1965	2,880	10.63	30,600	Ton	90.25	2,762,000.
	1964	2,740	9.5	26,000	Ton	62.50	1,625,000.
Peas, Frozen	1965	428	1.4	600	Ton	81.50	48,900.
	1964	500	1.5	750	Ton	75.00	56,300.
Peppers, Dry	1965	693	.97	672	Ton	525.00	353,000.
	1964	890	1.0	890	Ton	530.00	472,000.
Potatoes	1965	2,470	18.34	45,300	Ton	60.50	2,741,000.
	1964	2,550	17.1	43,600	Ton	70.00	3,052,000.

VEGETABLE CROPS Continued

Crop	Year	Harvested Acreage	Production		Unit	Value	
			Per Acre	Total		Per Unit	Total
Romaine	1965	482	15.8	7,620	Ton \$	55.75 \$	425,000.
	1964	310	11.8	3,660	Ton \$	49.80 \$	182,000.
Tomatoes	1965	190	7.0	1,330	Ton	180.00	239,000.
	1964	170	8.0	1,360	Ton	135.00	184,000.
Miscellaneous	1965	817					488,000.
	1964	920					434,700.
TOTAL	1965	24,304					\$19,871,900.
	1964	24,189					\$16,634,700.

FIELD CROPS: Acreage, Production, Value 1964-65

Crop	Year	Harvested Acreage	Production		Unit	Value	
			Per Acre	Total		Per Unit	Total
Barley	1965	11,400	.69	7,870	Ton \$	47.10 \$	371,000.
	1964	8,810	.55	4,850	Ton \$	47.50 \$	230,000.
Beans, Total	1965	12,085	.82	9,856	Ton	259.74	2,559,980.
	1964	11,169	.63	7,052	Ton	244.51	1,724,280.
Small Whites	1965	2,820	.9	2,540	Ton	250.00	635,000.
	1964	1,300	.8	1,040	Ton	204.00	212,000.
Pinks	1965	300	.63	189	Ton	205.00	38,800.
	1964	165	.65	107	Ton	175.00	18,700.
Limas	1965	6,230	.9	5,610	Ton	262.00	1,470,000.
	1964	6,140	.8	4,910	Ton	253.00	1,242,000.
Garbanzos	1965	2,700	.55	1,490	Ton	275.00	410,000.
	1964	3,270	.25	817	Ton	270.00	221,000.
Fordhooks	1965	25	.8	20	Ton	225.00	4,500.
	1964	62	1.0	62	Ton	220.00	13,700.
Miscellaneous	1965	10	.65	7	Ton	240.00	1,680.
	1964	232	.5	116	Ton	145.50	16,880.
Hay, Alfalfa	1965	10,200	8.1	82,600	Ton	26.00	2,148,000.
	1964	11,300	8.0	90,400	Ton	27.00	2,441,000.
Hay, Grain	1965	13,500	1.65	22,300	Ton	24.00	535,000.
	1964	13,000	1.0	13,000	Ton	25.00	325,000.

FIELD CROPS Continued

Crop	Year	Harvested Acreage	Production		Unit	Value	
			Per Acre	Total		Per Unit	Total
Oats	1965	1,520	.6	912	Ton \$	49.00 \$	44,700.
	1964	865	.5	459	Ton \$	53.00 \$	24,300.
Pasture, Irrigated	1965	7,650				50.00	383,000.
	1964	8,070				50.00	404,000.
Pasture, Other	1965	580,000				3.50	2,030,000.
	1964	588,000				3.50	2,058,000.
Silage, Corn	1965	2,400	33.5	80,400	Ton	10.00	804,000.
	1964	2,900	33.	95,700	Ton	10.00	950,000.
Sugar Beets	1965	3,050	21.3	65,000	Ton	11.50	748,000.
	1964	4,500	24.2	109,000	Ton	11.60	1,264,000.
Wheat	1965	4,060	.26	1,060	Ton	50.00	53,000.
	1964	* 2,930	* .2	* 590	Ton	*48.00	* 28,300.
Miscellaneous	1965	3,780					242,700.
	1964	4,900					209,680.
TOTAL	1965	649,645					\$ 9,919,380.
	1964	*656,444					*\$ 9,658,560.

\* Revised

FRUIT AND NUT CROPS: Acreage, Production, Value 1964-65

Crop	Year	Acreage		Production		Unit	Value	
		Planted	Bearing	Per Acre	Total		Per Unit	Total
Avocados	1965	2,281	1,679	3.32	5,570	Ton	\$ 520.00	\$ 2,896,000.
	1964	2,213	1,622	3.57	5,790	Ton	\$ 262.00	\$ 1,517,000.
Lemons, total	1965	5,764	5,564	10.7	59,700	Ton	122.18	7,294,000.
	1964	6,281	6,078	13.1	79,400	Ton	93.79	7,447,000.
Market	1965				42,500	Ton	153.00	6,503,000.
	1964				44,000	Ton	125.00	5,500,000.
Processing	1965				17,200	Ton	46.00	791,000.
	1964				35,400	Ton	55.00	1,947,000.
Oranges	1965	94	69	6.0	414	Ton	135.00	55,900.
	1964	87	67	9.2	620	Ton	190.00	118,000.

FRUIT AND NUT CROPS Continued

Crop	Year	Acreage		Production		Unit	Value	
		Planted	Bearing	Per Acre	Total		Per Unit	Total
Strawberries, Total	1965	682	682	14.3	9,770	Ton	\$ 423.95	\$ 4,142,000.
	1964	718	718	17.5	12,580	Ton	\$ 378.62	\$ 4,763,000.
Market	1965				6,020	Ton	470.00	2,829,000.
	1964				7,610	Ton	443.00	3,371,000..
Processing	1965				3,750	Ton	350.00	1,313,000.
	1964				4,970	Ton	280.00	1,392,000.
Walnuts	1965	1,840	1,701	.55	939	Ton	425.00	399,000.
	1964	1,904	1,799	.58	1,040	Ton	455.00	473,000.
Miscellaneous	1965	118	47					60,400.
	1964	117	68					66,000.
TOTAL	1965	10,779	9,742					\$14,847,300.
	1964	11,320	10,352					\$14,384,000.

NURSERY PRODUCTS: Production Area, Sales and Value 1964-65

	Year	Production Area		Quantity Sold By Producers	Unit	Value	
		House Sq.Ft.	Field Acres			Per Unit	Total
Citrus and Subtropical	1965	6,750		12,100	Plt	\$ 2.30	\$ 27,800.
	1964	17,300		10,858	Plt	\$ 2.25	\$ 24,400.
Ornamental Trees and Shrubs	1965	201,000	103				880,000.
	1964	161,000	83				748,000.
Herbaceous Perennials	1965	930,300	23				398,000.
	1964	922,000	72				440,000..
Indoor Decorative	1965	1,070,000					576,000.
	1964	1,070,000					552,000.
Miscellaneous	1965	103,500					47,000.
	1964	91,500	2				43,000.
TOTAL	1965	2,311,550	126				\$ 1,928,800.
	1964	2,261,800	157				\$ 1,807,400.
Cut Flowers	1965	1,999,000	535				\$ 2,034,000.
	1964	1,874,000	451				\$ 1,922,000.

LIVESTOCK AND POULTRY: Production and Value, 1964-65

Item	Year	Production		Unit	Value	
		No. of Head	Total Liveweight		Per Unit	Total
Cattle and Calves	1965	101,000	812,000	Cwt.	\$ 22.40	\$ 18,189,000.
	1964	96,800	745,000	Cwt.	\$ 20.40	\$ 15,198,000.
Sheep and Lambs	1965	8,300	8,900	Cwt.	17.50	156,000.
	1964	20,484	20,700	Cwt.	16.75	347,000.
Hogs and Pigs	1965	4,380	7,890	Cwt.	20.70	163,000.
	1964	3,200	6,280	Cwt.	17.50	110,000.
Broilers and Fryers	1965	15,500	50,400	Lbs.	.18	9,070.
	1964	26,500	86,100	Lbs.	.18	15,500.
Other Chickens	1965	155,000	620,000	Lbs.	.05	31,000.
	1964	194,000	776,000	Lbs.	.06	46,600.
Turkeys	1965	108,000	2,559,000	Lbs.	.22	563,000.
	1964	91,000	1,783,000	Lbs.	.21	374,000.
Miscellaneous	1965					95,000.
	1964					100,000.
TOTAL	1965					\$ 19,206,070.
	1964					\$ 16,191,100.

LIVESTOCK AND POULTRY PRODUCTS: Production and Value, 1964-65

	Year	Production	Unit	Value	
				Per Unit	Total
Milk, Total (Prelim.)	1965	954,760	Cwt.	\$ 5.17	\$ 4,933,800.
	1964	*907,495	Cwt.	*\$5.25	\$ *4,763,800.
Market	1965	953,000	Cwt.	5.17	4,927,000.
	1964	*907,000	Cwt.	*5.25	*4,762,000.
Manufacturing	1965	1,760	Cwt.	3.86	6,800.
	1964	* 495	Cwt.	*3.64	* 1,800.
Wool	1965	71,000	Lbs.	0.43	30,500.
	1964	250,000	Lbs.	0.42	105,000.
Eggs, Chicken	1965	6,762,000	Doz.	0.32	2,164,000.
	1964	6,007,000	Doz.	0.33	1,982,000.
Miscellaneous	1965				93,000.
	1964				41,000.
TOTAL	1965				\$ 7,221,300.
	1964				\$ *6,891,800.

\* Revised

SEED CROPS: Acreage, Production, Value 1964-65

	Year	Harvested Acreage	Production		Unit	Value	
			Per Acre	Total		Per Unit	Total
Bean, Seed	1965	7,460	.66	4,920	Ton	\$ 280.00	\$ 1,378,000.
	1964	6,680	.75	5,010	Ton	\$ 275.00	\$ 1,378,000.
Flower Seed	1965	2,410					2,269,000.
	1964	1,950					2,291,000.
Mustard	1965	144	.5	72	Ton	215.00	15,500.
	1964	180	.35	63	Ton	190.00	12,000.
Vegetable Seed	1965	63					41,000.
	1964	130					104,000.
Alfalfa Seed	1965	450	.2	90	Ton	680.00	61,200.
	1964	680	.23	156	Ton	660.00	103,000.
Miscellaneous	1965	300					12,800.
	1964	365					13,000.
TOTAL	1965	10,827					\$ 3,777,500.
	1964	9,985					\$ 3,901,000.

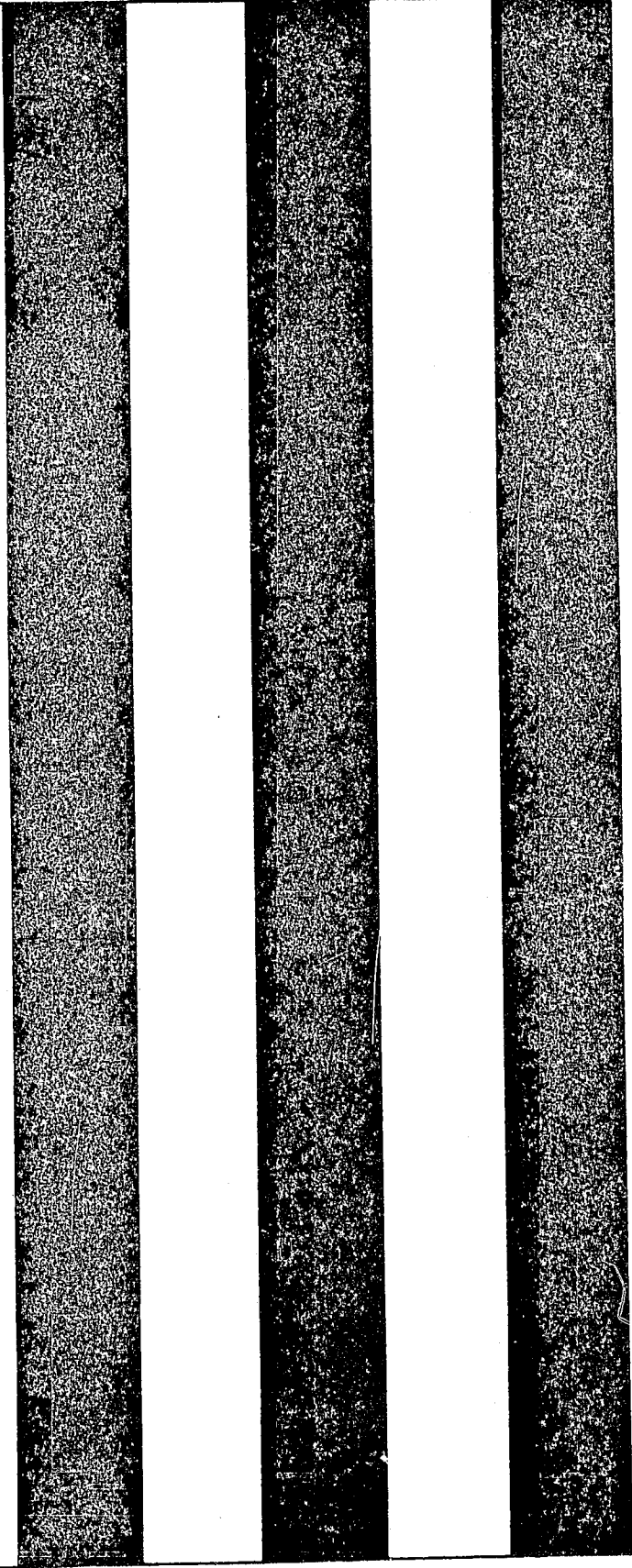
S U M M A R Y

1964-65

	Year	Acreage	∅ F.O.B. Value
Fruit and Nut Crops	1965	10,779	\$14,847,300.
	1964	11,320	\$14,384,000.
Vegetable Crops	1965	24,304	19,871,900.
	1964	24,189	16,634,700.
Field Crops	1965	649,645	9,919,380.
	1964	*656,444	* 9,658,560.
Nursery Products	1965	126	1,928,800.
	1964	157	1,807,400.
Cut Flowers	1965	535	2,034,000.
	1964	451	1,922,000.
Seed Crops	1965	10,827	3,777,500.
	1964	9,985	3,901,000.
Livestock and Poultry	1965		19,206,070.
	1964		16,191,100.
Livestock and Poultry Products	1965		7,221,300.
	1964		* 6,891,800.
TOTAL	1965		\$78,806,250.
	1964		*\$71,390,560.

\* Revised

∅ This is NOT the farm value but includes value after being graded, packed and sold in Santa Barbara County points.



1966



Calif. Santa Barbara County. Agr.  
Commissioner.  
Report (annual) 1966.



# Agricultural Crop Report **1966**

DEPARTMENT OF AGRICULTURE  
SANTA BARBARA COUNTY, CALIFORNIA

LIBRARY

Mr. Carl Coke, Director  
California State Department of Agriculture  
and

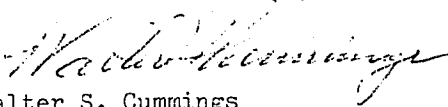
The Honorable Board of Supervisors of Santa Barbara County  
Daniel G. Grant, Chairman  
George H. Clyde                      Curtis Tunnell  
Joe J. Callahan                      F. H. Beattie

Gentlemen:

The acreages shown in this report are the planted and bearing acres of fruit and nut crops and the harvested acres of field and vegetable crops. Most acreage and all production and value figures have been rounded. Some of the figures from the 1965 crop report have been revised and are indicated by \*. The gross value shown is the F.O.B. value at first point of sale, which includes the cost of harvesting, grading and packaging, as well as the cost of production. This report does NOT indicate returns or profits to the producer or farmer. It does, however, show the amount of new wealth contributed by agriculture to the economy of Santa Barbara County. The total value of agricultural production reached an all time high in 1966 of \$85,147,840. It is estimated by economists that this income would produce an economic impact of over \$300,000,000 to the total economy. Agriculture continues to be one of the basic factors in the economy of Santa Barbara County.

My sincere thanks are extended to the many individuals, companies, organizations and the State Department of Agriculture for their fine cooperation in making available the necessary data from which this crop report is compiled.

Sincerely yours,

  
Walter S. Cummings  
Agricultural Commissioner  
County of Santa Barbara

1966

VEGETABLE CROPS: Acreage, Production, Value 1965-66

Crop	Year	Harvested Acreage	Production		Unit	Value	
			Per Acre	Total		Per Unit	Total
Onion	1966	44	13.0	570	Ton	\$ 99.80	\$ 56,200
	1965	69	13.1	904	Ton	\$ 100.00	\$ 90,400
Artichokes	1966	542	3.1	1,680	Ton	165.00	277,000
	1965	735	3.3	2,430	Ton	175.00	425,000
Beans, Lima, Frozen	1966	2,680	1.7	4,560	Ton	180.00	821,000
	1965	2,460	1.5	3,690	Ton	163.00	602,000
Broccoli, Total	1966	9,500	3.2	30,360	Ton	169.99	5,161,000
	1965	8,400	3.62	30,400	Ton	162.14	4,929,000
Market	1966			6,860	Ton	200.00	1,372,000
	1965			16,200	Ton	173.40	2,809,000
Frozen	1966			23,500	Ton	161.25	3,789,000
	1965			14,200	Ton	149.00	2,120,000
Cabbage	1966	783	9.7	7,600	Ton	94.00	714,000
	1965	610	13.18	8,040	Ton	63.80	513,000
Carrots	1966	2,530	19.0	48,100	Ton	70.00	3,367,000
	1965	1,630	20.0	32,600	Ton	65.00	2,119,000
Cauliflower, Total	1966	1,420	4.44	6,310	Ton	180.67	1,140,000
	1965	1,020	6.22	6,349	Ton	189.57	1,213,000
Market	1966			3,640	Ton	196.00	713,000
	1965			5,740	Ton	193.00	1,108,000
Frozen	1966			2,670	Ton	160.00	427,000
	1965			609	Ton	157.00	95,600
Celery	1966	1,120	27.1	30,400	Ton	105.00	3,192,000
	1965	1,220	27.0	33,000	Ton	80.00	2,640,000
Endive	1966	297	12.0	3,560	Ton	166.00	591,000
	1965	200	9.75	1,950	Ton	150.00	293,000
Lettuce	1966	2,600	13.8	35,900	Ton	102.00	3,662,000
	1965	2,880	10.63	30,600	Ton	90.25	2,762,000
Peas, Frozen	1966	None		None		None	None
	1965	428	1.4	600	Ton	81.50	48,900
Peppers, Dry	1966	700	1.5	1,050	Ton	540.00	567,000
	1965	693	.97	672	Ton	525.00	353,000
Potatoes	1966	2,590	16.1	41,700	Ton	48.80	2,035,000
	1965	2,470	18.34	45,300	Ton	60.50	2,741,000

VEGETABLE CROPS Continued

Crop	Year	Harvested Acreage	Production		Unit	Value	
			Per Acre	Total		Per Unit	Total
Romaine	1966	348	18.6	6,470	Ton	\$ 66.50	\$ 430,000
	1965	482	15.8	7,620	Ton	\$ 55.75	\$ 425,000
Tomatoes, Fresh and Canning	1966	900	13.4	12,100	Ton	53.31	645,000
	1965	190	7.0	1,330	Ton	180.00	239,000
Miscellaneous	* 1966	1,270					728,000
	* 1965	817					488,000
TOTAL	1966	27,324					\$ 23,386,900
	1965	24,304					\$ 19,871,900

\*Includes Brussels Sprouts, Cucumbers, Green Peppers, Parsley, Turnips, Parsnips, Spinach, Pumpkins, Sweet Corn and other miscellaneous vegetables.

FIELD CROPS: Acreage, Production, Value 1965-66

Crop	Year	Harvested Acreage	Production		Unit	Value	
			Per Acre	Total		Per Unit	Total
Barley	1966	9,500	.91	8,650	Ton	\$ 49.00	\$ 424,000
	1965	11,400	.69	7,870	Ton	\$ 47.10	\$ 371,000
Beans, Total	1966	13,967	.78	10,917	Ton	273.94	2,990,350
	1965	12,085	.82	9,856	Ton	259.74	2,559,980
Baby Limas	1966	156	1.0	156	Ton	200.00	31,200
	1965	--	--	--		--	--
Small Whites	1966	3,000	1.0	3,000	Ton	175.00	525,000
	1965	2,820	.9	2,540	Ton	250.00	635,000
Pinks	1966	200	1.2	240	Ton	150.00	36,000
	1965	300	.63	189	Ton	205.00	38,800
Limas	1966	5,940	.95	5,640	Ton	342.00	1,929,000
	1965	6,230	.9	5,610	Ton	262.00	1,470,000
Garbanzos	1966	4,600	.4	1,840	Ton	250.00	460,000
	1965	2,700	.55	1,490	Ton	275.00	410,000
Fordhooks	1966	--	--	--		--	--
	1965	25	.8	20	Ton	225.00	4,500
Miscellaneous	1966	71	.58	41	Ton	228.00	9,350
	1965	10	.65	7	Ton	240.00	1,680
Hay, Alfalfa	1966	10,100	3.0	80,800	Ton	30.00	2,424,000
	1965	10,200	8.1	82,600	Ton	26.00	2,148,000

FIELD CROPS Continued

Crop	Year	Harvested Acreage	Production		Unit	Value	
			Per Acre	Total		Per Unit	Total
Hay, Grain	1966	13,200	1.46	19,300	Ton	\$ 28.00	\$ 540,000
	1965	13,500	1.65	22,300	Ton	\$ 24.00	\$ 535,000
Oats	1966	414	.65	270	Ton	48.00	13,000
	1965	1,520	.6	912	Ton	49.00	44,700
Pasture, Irrigated	1966	7,800				50.00	390,000
	1965	7,650				50.00	383,000
Pasture, Other	1966	575,000				1.75	2,156,000
	1965	580,000				3.50	2,030,000
Silage, Corn	1966	1,740	32.1	55,900	Ton	10.00	559,000
	1965	2,400	33.5	80,400	Ton	10.00	804,000
Sugar Beets	+ 1966	1,530	27.1	41,500	Ton	13.40	556,000
	* 1965	3,050	21.3	65,000	Ton	11.90	774,000
Wheat	1966	3,500	.42	1,470	Ton	53.00	77,900
	* 1965	3,000	.45	1,350	Ton	50.00	67,500
Miscellaneous	1966	3,370					212,000
	1965	3,720					240,700
TOTAL	1966	640,121					\$ 10,342,450
	* 1965	642,585					\$ 10,229,880

† Preliminary

\* Revised

FRUIT AND NUT CROPS: Acreage, Production, Value 1965-66

Crop	Year	Acreage		Production		Unit	Value	
		Planted	Bearing	Per Acre	Total		Per Unit	Total
Avocados	1966	2,296	1,670	4.09	6,830	Ton	\$ 265.00	\$ 1,810,000
	1965	2,281	1,679	3.32	5,570	Ton	\$ 520.00	\$ 2,896,000
Lemons, Total	1966	5,429	5,197	11.7	60,900	Ton	126.75	7,719,000
	1965	5,764	5,564	10.7	59,700	Ton	122.18	7,294,000
Market	1966				41,000	Ton	164.00	6,724,000
	1965				42,500	Ton	153.00	6,503,000
Processing	1966				19,900	Ton	50.00	995,000
	1965				17,200	Ton	46.00	791,000
Oranges	1966	103	67	4.0	270	Ton	120.00	32,400
	1965	94	69	6.0	414	Ton	135.00	55,900

FRUIT AND NUT CROPS Continued

Crop	Year	Acreage		Production			Value	
		Planted	Bearing	Per Acre	Total	Unit	Per Unit	Total
Strawberries, Total	1966	544	544	12.8	6,940	Ton	\$ 426.80	\$2,952,000
	1965	682	682	14.3	9,770	Ton	\$ 423.95	\$4,142,000
Market	1966				4,200	Ton	490.00	2,058,000
	1965				6,020	Ton	470.00	2,809,000
Processing	1966				2,740	Ton	330.00	904,000
	1965				3,750	Ton	350.00	1,312,000
Walnuts	1966	1,779	1,646	.64	1,050	Ton	450.00	473,000
	* 1965	1,340	1,701	.57	964	Ton	432.00	418,000
Miscellaneous	1966	186	160					169,000
	1965	118	47					60,400
TOTAL	1966	10,327	9,284					\$15,165,400
	1965	10,779	9,742					\$14,861,300

\* Revised

NURSERY PRODUCTS: Production Area, Sales and Value 1965-66

	Year	Production Area		Quantity Sold by Producers	Unit	Value	
		House Sq. Ft.	Field Acres			Per Unit	Total
Citrus and Subtropical	1966	37,600		19,800	plt.	\$ 2.25	\$ 44,600
	1965	6,750		12,100	plt.	\$ 2.30	\$ 27,800
Ornamental Trees and Shrubs	1966	335,000	119				1,121,000
	1965	201,000	103				890,000
Herbaceous Perennials	1966	907,000					295,000
	* 1965	917,000	7				331,000
Indoor Decorative	1966	1,440,000	8				300,000
	* 1965	1,083,000	16				693,000
Miscellaneous	1966	96,000	6				67,000
	1965	103,500					47,000
TOTAL	1966	2,815,600	133				\$ 2,315,600
	1965	2,311,250	126				\$ 1,928,800

\* Revised

Cut Flowers	1966	2,366,000	519				\$ 2,554,000
	1965	1,999,000	535				\$ 2,074,000

LIVESTOCK AND POULTRY: Production and Value, 1965-66

Item	Year	Production		Unit	Value	
		No. of Head	Total Liveweight		Per Unit	Total
Cattle and Calves	1966	108,919	870,000	Cwt	\$ 24.30	\$21,165,000
	1965	101,000	812,000	Cwt	\$ 22.40	\$18,189,000
Wool and Lambs	1966	9,130	10,000	Cwt	17.00	170,000
	1965	8,300	8,900	Cwt	17.50	156,000
Pigs and Pigs	1966	5,040	8,600	Cwt	25.20	217,000
	1965	4,380	7,890	Cwt	20.70	163,000
Broilers and Fryers	1966	20,300	66,000	Lbs.	0.19	12,500
	1965	15,500	50,400	Lbs.	0.18	9,070
Other Chickens	1966	89,400	358,000	Lbs.	0.08	23,600
	1965	155,000	620,000	Lbs.	0.05	31,000
Turkeys	1966	114,000	2,424,000	Lbs.	0.25	606,000
	1965	102,000	2,559,000	Lbs.	0.22	563,000
Miscellaneous	1966					121,000
	1965					25,000
TOTAL	1966					\$22,320,100
	1965					\$19,206,070

LIVESTOCK AND POULTRY PRODUCTS: Production and Value, 1965-66

	Year	Production	Unit	Value	
				Per Unit	Total
Milk, Total	1966	867,050	Cwt	\$ 5.36	\$ 4,650,800
	* 1965	939,030	Cwt	\$ 5.14	\$ 4,823,590
Market	1966	863,000	Cwt	5.37	4,634,000
	* 1965	937,000	Cwt	5.14	4,816,000
Manufacturing	1966	4,050	Cwt	4.15	16,800
	* 1965	2,030	Cwt	3.74	7,500
Wool	1966	66,000	Lbs.	0.49	32,300
	1965	71,000	Lbs.	0.43	30,500
Eggs, Chicken	1966	6,750,000	Doz.	0.38	2,565,000
	1965	6,762,000	Doz.	0.32	2,164,000
Miscellaneous	1966				65,000
	1965				23,000
TOTAL	1966				\$ 7,313,100
	* 1965				\$ 7,111,090

\* Revised

SEED CROPS: Acreage, Production, Value 1965-66

	Year	Harvested Acreage	Production			Value	
			Per Acre	Total	Unit	Per Unit	Total
Bean, Seed	1966	6,850	.73	5,000	Ton	\$ 350.00	\$ 1,750,000
	1965	7,460	.66	4,920	Ton	\$ 280.00	\$ 1,378,000
Flower Seed	1966	2,220					1,887,000
	1965	2,410					2,200,000
Mustard	1966	37	.5	19	Ton	215.00	4,090
	1965	144	.5	72	Ton	215.00	15,500
Vegetable Seed	1966	50					32,500
	1965	63					41,000
Alfalfa Seed	1966	310	.27	84	Ton	670.00	56,300
	1965	450	.2	90	Ton	680.00	61,200
Miscellaneous	1966	320					14,400
	1965	300					12,800
TOTAL	1966	9,787					\$ 3,744,290
	1965	10,827					\$ 3,777,500

S U M M A R Y  
1965-66

	Year	Acreage	F.O.B. Value
Fruit and Nut Crops	1966	10,337	\$ 13,165,400
	* 1965	10,779	\$ 14,864,300
Vegetable Crops	1966	27,324	23,386,900
	1965	24,304	19,871,900
Field Crops	1966	640,121	10,348,450
	* 1965	648,585	9,959,880
Nursery Products	1966	133	2,315,600
	* 1965	126	1,928,800
Cut Flowers	1966	519	2,554,000
	1965	535	2,034,000
Seed Crops	1966	9,787	3,744,290
	1965	10,827	3,777,500
Livestock and Poultry	1966		22,320,100
	1965		19,206,070
Livestock and Poultry Products	1966		7,313,100
	* 1965		7,111,090
TOTAL	1966	688,221	\$ 85,147,840
	* 1965	695,156	\$ 78,753,540

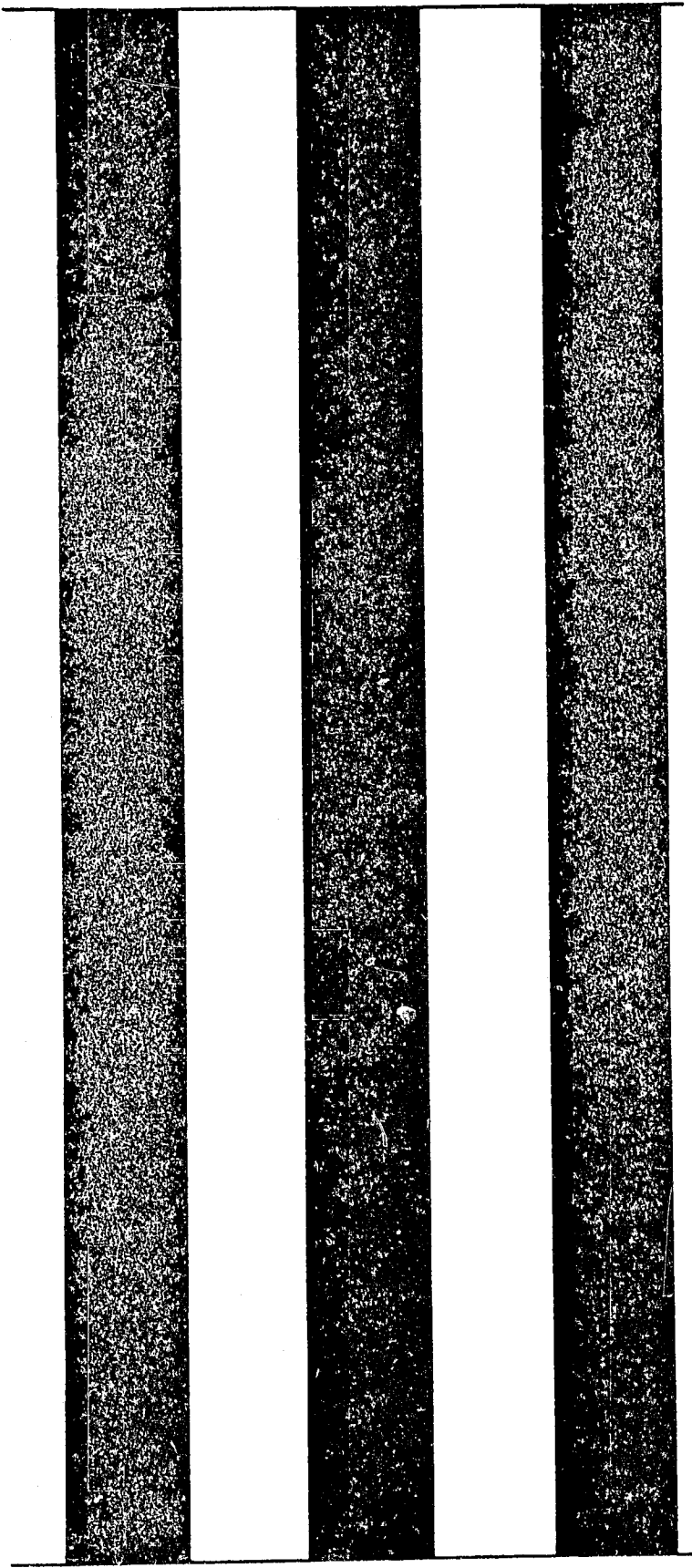
\* Revised



DEPARTMENT OF CULTURE  
P.O. BOX 147  
SANTA CRUZ, CALIFORNIA



Government Documents Department  
University of California Library  
Davis, California 95616

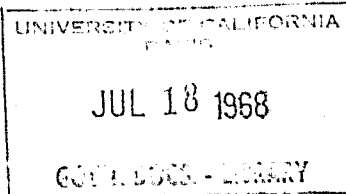


1967



Agricultural Crop  
Report  
**1967**

DEPARTMENT OF AGRICULTURE  
SANTA BARBARA COUNTY, CALIFORNIA



Mr. Earl Coke, Director  
California State Department of Agriculture

The Honorable Board of Supervisors of Santa Barbara County

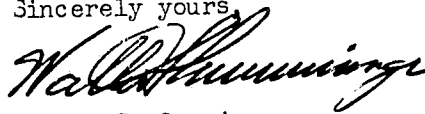
Curtis Tunnell, Chairman  
George H. Clyde                      Daniel G. Grant  
Joe J. Callahan                      F. H. Beattie

Gentlemen:

The acreages shown in this report are the planted and bearing acres of fruit and nut crops and the harvested acres of field and vegetable crops. Most acreage and all production and value figures have been rounded. Some of the figures from the 1966 crop report have been revised and are indicated by \*. The gross value shown is the F.O.B. value at first point of sale, which includes the cost of harvesting, grading and packaging, as well as the cost of production. This report does NOT indicate returns or profits to the producer or farmer. Farm production expenses have continued to climb, particularly in labor-sensitive crops resulting in lower net farm income. It does, however, show the amount of new wealth contributed by agriculture to the economy of Santa Barbara County. The total value of agricultural production reached an all time high in 1967 of \$28,129,060. Agriculture continues to be one of the basic factors in the economy of Santa Barbara County.

My sincere thanks are extended to the many individuals, companies, organizations and the State Department of Agriculture for their fine cooperation in making available the necessary data from which this crop report is compiled.

Sincerely yours,



Walter S. Cummings  
Agricultural Commissioner

1967

VEGETABLE CROPS: Acreage, Production, Value 1966-67

Crop	Year	Harvested Acreage	Production		Unit	Value	
			Per Acre	Total		Per Unit	Total
Anise	1967	52	6.5	338	Ton	\$ 136.00	\$ 46,000
	1966	44	13.0	570	Ton	\$ 99.80	\$ 56,900
Artichokes	1967	330	3.4	1,120	Ton	188.00	211,000
	1966	542	3.1	1,680	Ton	165.00	277,000
Beans, Lima, Frozen	1967	2,450	1.8	4,410	Ton	178.00	785,000
	1966	2,680	1.7	4,560	Ton	180.00	821,000
Broccoli, Total	1967	9,870	3.0	29,880	Ton	160.74	4,795,000
	1966	9,500	3.2	30,360	Ton	169.99	5,161,000
Market	1967			7,970	Ton	192.00	1,530,000
	1966			6,860	Ton	200.00	1,372,000
Frozen	1967			21,910	Ton	149.00	3,265,000
	1966			23,500	Ton	161.25	3,789,000
Cabbage	1967	780	15.9	12,400	Ton	84.00	1,042,000
	1966	783	9.7	7,600	Ton	94.00	714,000
Carrots	1967	1,730	13.5	23,400	Ton	75.00	1,755,000
	1966	2,530	19.0	48,100	Ton	70.00	3,367,000
Cauliflower, Total	1967	1,400	5.33	7,470	Ton	211.91	1,583,000
	1966	1,420	4.44	6,310	Ton	180.67	1,140,000
Market	1967			5,240	Ton	234.00	1,226,000
	1966			3,640	Ton	196.00	713,000
Frozen	1967			2,230	Ton	160.00	357,000
	1966			2,670	Ton	160.00	427,000
Celery	1967	940	26.9	25,300	Ton	95.00	2,404,000
	1966	1,120	27.1	30,400	Ton	105.00	3,192,000
Endive	1967	160	12.0	1,920	Ton	174.00	334,000
	1966	297	12.0	3,560	Ton	166.00	591,000
Lettuce	1967	2,920	13.6	39,800	Ton	125.00	4,975,000
	1966	2,600	13.8	35,900	Ton	102.00	3,662,000
Peppers, Dry	1967	730	1.5	1,110	Ton	550.00	611,000
	1966	700	1.5	1,050	Ton	540.00	567,000
Potatoes	1967	2,030	16.2	32,900	Ton	46.50	1,530,000
	1966	2,590	16.1	41,700	Ton	48.80	2,035,000

VEGETABLE CROPS Continued

Crop	Year	Harvested Acreage	Production		Unit	Value	
			Per Acre	Total		Per Unit	total
Tomatoe	1967	410	20.3	8,330	Ton \$	71.50 \$	596,000
	1966	348	18.6	6,470	Ton \$	66.50 \$	430,000
Tomatoes, Fresh and Canning	1967	1,030	24.5	25,200	Ton	39.00	983,000
	1966	900	13.4	12,100	Ton	53.31	615,000
Miscellaneous	* 1967	1,110					764,000
	* 1966	1,270					728,000
Total	1967	25,942					\$22,414,000
	1966	27,324					\$23,386,900

\*Includes Brussels Sprouts, Cucumbers, Green Peppers, Parsley, Turnips, Parsnips, Spinach, Pumpkins, Sweet Corn and other miscellaneous vegetables.

FIELD CROPS: Acreage, Production, Value 1966-67

Crop	Year	Harvested Acreage	Production		Unit	Value	
			Per Acre	Total		Per Unit	total
Barley	1967	12,100	1.1	13,300	Ton \$	47.00 \$	625,000
	1966	9,500	0.91	8,650	Ton \$	49.00 \$	424,000
Beans, Total	1967	14,560	0.85	12,348	Ton	363.65	4,490,400
	* 1966	13,967	0.78	10,917	Ton	323.67	3,533,500
Baby Limas	1967	115	0.5	58	Ton	280.00	16,200
	1966	156	1.0	156	Ton	200.00	31,200
Small Whites	1967	2,490	0.9	2,240	Ton	242.00	542,000
	1966	3,000	1.0	3,000	Ton	175.00	525,000
Limas	1967	8,430	0.94	7,920	Ton	426.00	3,374,000
	* 1966	5,940	0.95	5,640	Ton	438.00	2,470,000
Garbanzos	1967	2,680	0.5	1,340	Ton	212.00	284,000
	1966	4,600	0.4	1,840	Ton	250.00	460,000
Fardhooks	1967	570	1.0	570	Ton	380.00	217,000
	1966	--	--	--	--	--	--
Miscellaneous	1967	275	0.8	220	Ton	260.00	57,200
	* 1966	271	1.0	270	Ton	175.00	47,300
Hay, Alfalfa	1967	10,200	7.8	79,600	Ton	31.00	2,468,000
	1966	10,100	8.0	80,800	Ton	30.00	2,424,000

FIELD CROPS Continued

Crop	Year	Harvested Acreage	Production		Unit	Value	
			Per Acre	Total		Per Unit	Total
Hay, Grain	1967	11,900	1.9	22,600	Ton	\$ 29.00	\$ 655,000
	1966	13,200	1.46	19,300	Ton	\$ 28.00	\$ 540,000
Oats	1967	1,210	0.9	1,090	Ton	52.00	56,700
	1966	414	0.65	270	Ton	48.00	13,000
Pasture, Irrigated	1967	8,250				50.00	412,000
	1966	7,800				50.00	390,000
Pasture, Other	1967	575,000				3.80	2,185,000
	1966	575,000				3.75	2,156,000
Silage, Corn	1967	1,560	30.0	46,800	Ton	10.00	468,000
	1966	1,740	32.1	55,900	Ton	10.00	559,000
Sugar Beets	+ 1967	2,270	25.9	58,800	Ton	14.42	848,000
	* 1966	1,530	27.1	41,500	Ton	13.83	574,000
Wheat	1967	6,470	0.45	2,910	Ton	54.00	157,000
	1966	3,500	0.42	1,470	Ton	53.00	77,900
Miscellaneous	1967	4,210					270,000
	1966	3,370					218,000
Total	+ 1967	647,730					\$12,635,100
	* 1966	640,121					\$10,909,400

+ Preliminary

\* Revised

FRUIT AND NUT CROPS: Acreage, Production, Value 1966-67

Crop	Year	Acreage		Production		Unit	Value	
		Planted	Bearing	Per Acre	Total		Per Unit	Total
Avocados	1967	2,524	1,877	4.0	9,200	Ton	\$ 220.00	\$ 2,024,000
	1966	2,296	1,670	3.1	6,830	Ton	\$ 265.00	\$ 1,810,000
Lemons, total	1967	5,213	4,950	13.5	67,000	Ton	111.09	7,443,000
	1966	5,429	5,197	11.7	60,900	Ton	126.75	7,719,000
Market	1967				38,500	Ton	160.00	6,160,000
	1966				41,000	Ton	164.00	6,724,000
Processing	1967				28,500	Ton	45.00	1,283,000
	1966				19,900	Ton	50.00	995,000
Oranges	1967	105	70	4.4	315	Ton	130.00	41,000
	1966	103	67	4.0	270	Ton	120.00	32,400

FRUIT AND NUT CROPS Continued

Crop	Year	Acreage		Production		Unit	Value	
		Planted	Bearing	Per Acre	Total		Per Unit	Total
Strawberries, Total	1967	630	630	16.0	10,080	Ton	\$ 435.50	\$ 4,390,000
	1966	544	544	12.8	6,440	Ton	\$ 426.80	\$ 2,962,000
Market	1967				7,860	Ton	478.00	3,757,000
	1966				1,200	Ton	490.00	2,059,000
Processing	1967				2,220	Ton	285.00	633,000
	1966				2,740	Ton	330.00	904,000
Walnuts	1967	1,651	1,536	.66	1,020	Ton	500.00	510,000
	1966	1,779	1,646	.64	1,050	Ton	450.00	473,000
Miscellaneous	1967	201	181					150,000
	1966	186	160					169,000
Total	1967	10,324	9,244					\$14,558,000
	1966	10,337	9,284					\$13,165,400

NUSSERY PRODUCTS: Production Area, Sale and Value 1966-67

Item	Year	Production Area		Quantity Sold By Producers	Unit	Value	
		House Sq. Ft.	Field Acres			Per Unit	Total
Citrus and Subtropical	1967	7,560		10,300	Plt	\$ 2.25	\$ 23,200
	1966	37,600		19,800	Plt	\$ 2.25	\$ 44,600
Ornamental Trees and Shrubs	1967	322,000	110				1,121,000
	1966	335,000	119				1,111,000
Herbaceous Perennials	1967	907,000					318,000
	1966	907,000					293,000
Indoor Decorative	1967	1,571,000	18				937,000
	1966	1,440,000	8				800,000
Miscellaneous	1967	92,000	--				97,400
	1966	96,000	6				67,000
Total	1967	2,906,560	128				\$ 2,496,600
	1966	2,815,600	133				\$ 2,315,600
Cut Flowers	1967	2,433,000	405				\$ 2,821,000
	1966	2,366,000	519				\$ 2,554,000



LIVESTOCK AND POULTRY: Production and Value, 1966-67

Item	Year	Production		Unit	Value	
		No. of Head	Total Liveweight		Per Unit	Total
Cattle and Calves	1967	110,000	880,000	Cwt	\$ 24.50	\$ 21,560,000
	1966	109,000	870,000	Cwt	\$ 24.30	\$ 21,165,000
Sheep and Lambs	1967	7,540	7,940	Cwt	17.05	135,000
	1966	9,130	10,000	Cwt	17.00	170,000
Hogs and Pigs	1967	3,300	5,250	Cwt	23.75	125,000
	1966	5,040	8,600	Cwt	25.20	217,000
Broilers and Fryers	1967	22,300	72,000	Lbs	0.22	16,100
	1966	20,300	66,000	Lbs	0.19	12,500
Other Chickens	1967	260,000	1,040,000	Lbs	0.05	52,000
	1966	89,400	358,000	Lbs	0.08	28,600
Turkeys	1967	132,000	2,827,000	Lbs	0.22	622,000
	1966	114,000	2,424,000	Lbs	0.25	606,000
Miscellaneous	1967					50,000
	1966					121,000
Total	1967					\$ 22,560,100
	1966					\$ 22,320,100

LIVESTOCK AND POULTRY PRODUCTS: Production and Value 1966-67

Item	Year	Production	Unit	Value	
				Per Unit	Total
Milk, Total	+ 1967	879,170	Cwt	\$ 5.45	\$ 4,789,460
	* 1966	886,800	Cwt	\$ 5.28	\$ 4,679,600
Market	+ 1967	877,000	Cwt	5.45	4,780,000
	* 1966	884,000	Cwt	5.28	4,668,000
Manufacturing+	1967	2,170	Cwt	4.36	9,460
	* 1966	2,800	Cwt	4.13	11,600
Wool	1967	88,400	Lbs	0.45	39,800
	1966	66,000	Lbs	0.49	32,300
Eggs, Chicken	1967	6,146,000	Doz	0.34	2,090,000
	1966	6,750,000	Doz	0.38	2,565,000
Miscellaneous	1967				78,000
	1966				65,000
Total	+ 1967				\$ 6,997,260
	* 1966				\$ 7,341,900

+ Preliminary

\* Revised

SEED CROPS: Acreage, Production, Value 1966-67

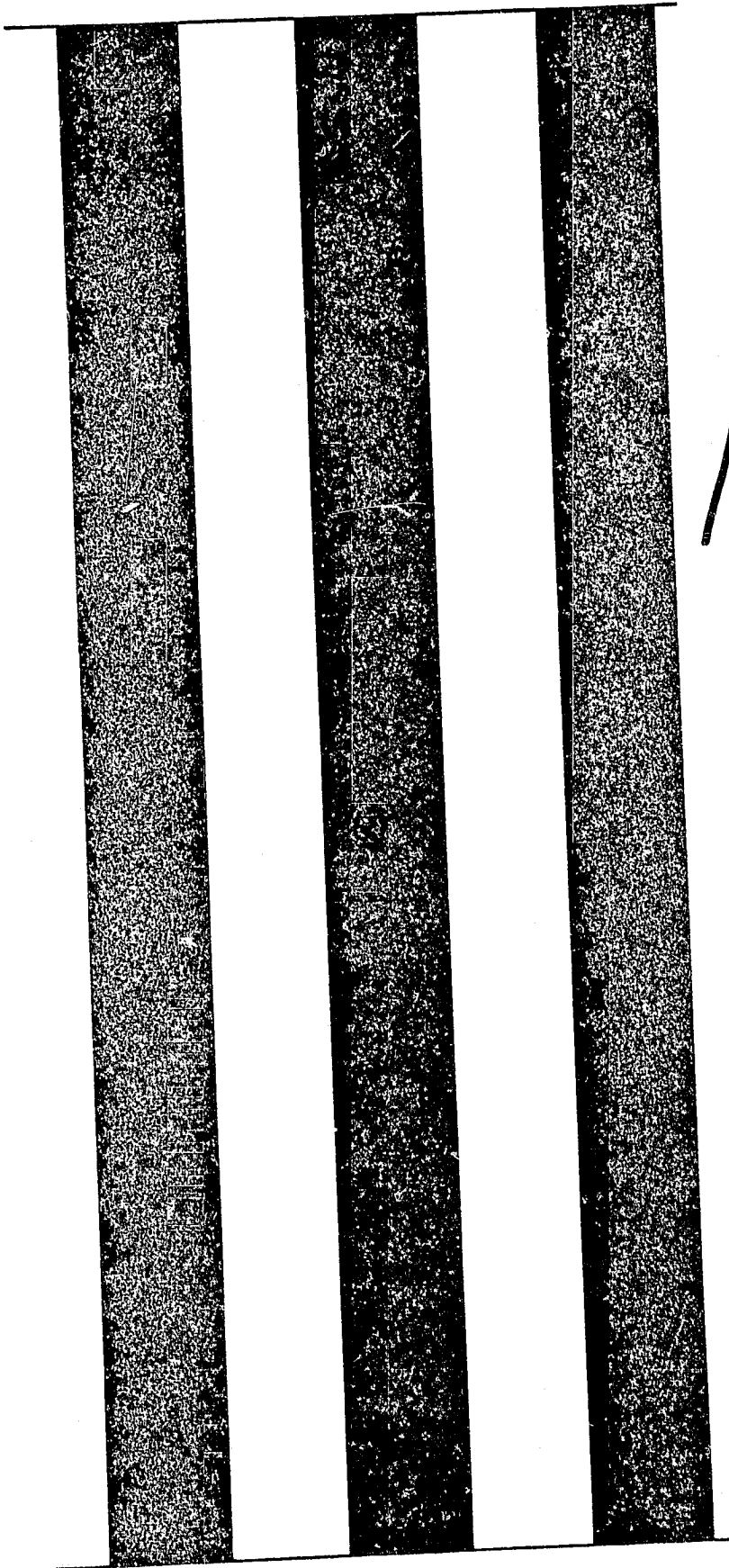
Crop	Year	Harvested Acreage	Production		Unit	Value	
			Per Acre	Total		Per Unit	Total
Bean, Seed	1967	6,410	0.9	5,770	Ton	\$ 360.00	\$ 2,077,000
	1966	6,850	0.73	5,000	Ton	\$ 350.00	\$ 1,750,000
Flower Seed	1967	1,700					1,402,000
	1966	2,220					1,887,000
Mustard	1967	390	0.4	160	Ton	220.00	35,200
	1966	37	0.5	19	Ton	215.00	4,070
Vegetable Seed	1967	100					48,000
	1966	50					32,500
Alfalfa Seed	1967	280	0.38	106	Ton	800.00	84,800
	1966	310	0.27	84	Ton	670.00	56,300
Miscellaneous	1967	--					--
	1966	320					14,400
Total	1967	8,880					\$ 3,647,000
	1966	9,787					\$ 3,744,290

S U M M A R Y  
1966-67

	Year	Acreage	F.O.B. Value
Fruit and Nut Crops	1967	10,324	\$ 14,558,000
	1966	10,337	\$ 13,165,400
Vegetable Crops	1967	25,942	22,414,000
	1966	27,324	23,386,900
Field Crops	+ 1967	647,730	12,635,100
	* 1966	640,121	10,909,400
Nursery Products	1967	195	2,496,600
	* 1966	198	2,315,600
Cut Flowers	1967	461	2,821,000
	* 1966	573	2,554,000
Seed Crops	1967	8,880	3,647,000
	1966	9,787	3,744,290
Livestock and Poultry	1967		22,560,100
	1966		22,320,100
Livestock and Poultry Products	+ 1967		6,997,260
	* 1966		7,341,900
Total	+ 1967	693,532	\$ 88,129,060
	* 1966	688,340	\$ 85,737,590

+ Preliminary

\* Revised



1968

Calif. Santa Barbara Co. Agricultural  
Commissioner.  
Report. (Annual). 1968.



# Agricultural Crop Report

**1968**

UNIVERSITY OF CALIFORNIA  
DAVIS  
MAY 1 1969  
GOVT. DOCS. - LIBRARY

DEPARTMENT OF AGRICULTURE  
SANTA BARBARA COUNTY, CALIFORNIA

Mr. Jerry W. Fielder, Director  
California Department of Agriculture  
and  
The Honorable Board of Supervisors of Santa Barbara County

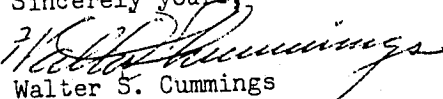
F. H. Beattie, Chairman  
George H. Clyde                      Daniel G. Grant  
Joe J. Callahan                      Curtis Tunnell

Gentlemen:

The acreages shown in this report are the planted and bearing acres of fruit and nut crops and the harvested acres of field and vegetable crops. The 1968 acreages of fruit and nut crops have been adjusted as a result of a resurvey during the year by the State Department of Agriculture. Most of the harvested acreage and all production and value figures have been rounded. Some of the figures from the 1967 crop report have been revised and are indicated by \*. The gross value shown is the F.O.B. value at first point of sale which includes the cost of harvesting, grading and packaging as well as the cost of production. This report does NOT indicate returns or profits to the producer or farmer. Farm production expenses have continued to climb, particularly in labor-sensitive crops resulting in lower net farm income. It does, however, show the amount of new wealth contributed by agriculture to the economy of Santa Barbara County. The total value of agricultural production reached an all time high in 1968 of \$90,295,460. Agriculture continues to be one of the basic factors in the economy of Santa Barbara County.

My sincere thanks are extended to the many individual, organizations, companies and the State Department of Agriculture for their fine cooperation in making available the necessary data from which this crop report is compiled.

Sincerely yours,

  
Walter S. Cummings  
Agricultural Commissioner

1968

VEGETABLE CROPS: Acreage, Production, Value 1967-1968

Crop	Year	Harvested Acreage	Production		Unit	Value	
			Per Acre	Total		Per Unit	total
Anise	1968	46	7.1	327	Ton	\$ 142.00	\$ 46,400
	1967	52	6.5	338	Ton	\$ 136.00	\$ 46,000
Artichokes	1968	375	4.0	1,500	Ton	191.00	286,000
	1967	330	3.4	1,120	Ton	188.00	211,000
Beans, Lima, Frozen	1968	2,600	1.6	4,160	Ton	180.00	749,000
	1967	2,450	1.8	4,410	Ton	178.00	785,000
Broccoli, Total	1968	9,000	4.5	40,500	Ton	156.81	6,351,000
	1967	9,870	3.0	29,880	Ton	160.74	4,795,000
Market	1968			4,800	Ton	200.00	960,000
	1967			7,970	Ton	192.00	1,530,000
Frozen	1968			35,700	Ton	151.00	5,391,000
	1967			21,910	Ton	149.00	3,265,000
Cabbage	1968	670	18.1	12,100	Ton	87.00	1,053,000
	1967	780	15.9	12,400	Ton	84.00	1,042,000
Carrots	1968	1,670	14.6	24,400	Ton	70.00	1,702,000
	1967	1,730	13.5	23,400	Ton	75.00	1,755,000
Cauliflower, Total	1968	1,580	5.25	8,300	Ton	204.22	1,695,000
	1967	1,400	5.33	7,470	Ton	211.91	1,583,000
Market	1968			5,150	Ton	225.00	1,159,000
	1967			5,240	Ton	234.00	1,226,000
Frozen	1968			3,150	Ton	170.00	536,000
	1967			2,230	Ton	160.00	357,000
Celery	1968	1,070	27.1	29,000	Ton	90.00	2,610,000
	1967	940	26.9	25,300	Ton	95.00	2,404,000
Endive	1968	132	12.0	1,580	Ton	172.00	272,000
	1967	160	12.0	1,920	Ton	174.00	334,000
Lettuce	1968	4,010	13.0	52,100	Ton	80.00	4,168,000
	1967	2,920	13.6	39,800	Ton	125.00	4,975,000
Peppers, Dry	1968	800	1.8	1,440	Ton	551.00	793,000
	1967	730	1.5	1,110	Ton	550.00	611,000
Potatoes	1968	2,110	16.3	34,400	Ton	48.50	1,662,000
	1967	2,030	16.2	32,900	Ton	46.50	1,530,000
Romaine	1968	310	19.5	6,040	Ton	60.00	362,000
	1967	410	20.3	8,330	Ton	71.50	596,000

VEGETABLE CROPS Continued

Crop	Year	Harvested Acreage	Production		Unit	Value	
			Per Acre	Total		Per Unit	Total
Tomatoes, Fresh and Canning	1968	1,470	19.0	27,900	Ton \$	35.80 \$	999,000
	1967	1,030	24.5	25,200	Ton \$	39.00 \$	983,000
Miscellaneous	* 1968	1,450					850,000
	* 1967	1,110					764,000
TOTAL	1968	27,293					\$23,610,400
	1967	25,942					\$22,414,000

\* Includes Brussels Sprouts, Cucumbers, Green Peppers, Parsley, Turnips, Sweet Corn, Parsnips, Spinach, Pumpkins and other miscellaneous vegetables.

FIELD CROPS: Acreage, Production, Value 1967-1968

Crop	Year	Harvested Acreage	Production		Unit	Value	
			Per Acre	Total		Per Unit	Total
Barley	1968	10,100	0.8	8,080	Ton \$	46.00 \$	372,000
	1967	12,100	1.1	13,300	Ton \$	47.00 \$	625,000
Beans, Total	1968	14,980	0.66	9,845	Ton	297.28	2,926,700
	1967	14,560	0.85	12,348	Ton	363.65	4,490,400
Baby Limas	1968	175	0.46	80	Ton	146.00	11,700
	1967	115	0.50	58	Ton	280.00	16,200
Small Whites	1968	2,770	0.89	2,460	Ton	230.00	566,000
	1967	2,490	0.90	2,240	Ton	242.00	542,000
Limas	1968	8,470	0.7	5,930	Ton	330.00	1,957,000
	1967	8,430	0.94	7,920	Ton	426.00	3,374,000
Garbanzos	1968	2,990	0.3	900	Ton	294.00	265,000
	1967	2,680	0.5	1,340	Ton	212.00	284,000
Fordhooks	1968	375	1.0	375	Ton	280.00	105,000
	1967	570	1.0	570	Ton	380.00	217,000
Miscellaneous	1968	200	0.5	100	Ton	220.00	22,000
	1967	275	0.8	220	Ton	260.00	57,200
Hay, Alfalfa	1968	10,300	8.0	82,400	Ton	28.50	2,348,000
	1967	10,200	7.8	79,600	Ton	31.00	2,468,000
Hay, Grain	1968	12,000	1.8	21,600	Ton	28.00	605,000
	1967	11,900	1.9	22,600	Ton	29.00	655,000

FIELD CROPS Continued

Crop	Year	Harvested Acreage	Production		Unit	Value	
			Per Acre	Total		Per Unit	Total
Oats	1968	620	0.5	310	Ton	\$ 51.50	\$ 16,000
	1967	1,210	0.9	1,090	Ton	\$ 52.00	\$ 56,700
Pasture, Irrigated	1968	8,460				60.00	508,000
	1967	8,250				50.00	412,000
Pasture, Other	1968	575,000				4.00	2,300,000
	1967	575,000				3.80	2,185,000
Silage, Corn	1968	1,260	30.0	37,800	Ton	10.00	378,000
	1967	1,560	30.0	46,800	Ton	10.00	468,000
Sugar Beets	+ 1968	3,430	30.0	103,000	Ton	14.50	1,494,000
	1967	2,270	25.9	58,800	Ton	14.42	848,000
Wheat	1968	3,970	0.21	830	Ton	49.00	40,700
	1967	6,470	0.45	2,910	Ton	54.00	157,000
Miscellaneous	1968	4,400					290,000
	1967	4,210					270,000
TOTAL	1968	644,520					\$11,278,400
	1967	647,730					\$12,635,100
+ Preliminary							

FRUIT AND NUT CROPS: Acreage, Production, Value 1967-1968

Crop	Year	Acreage		Production		Unit	Value	
		Planted	Bearing	Per Acre	Total		Per Unit	Total
Avocados	** 1968	2,540	1,760	2.8	4,930	Ton	\$ 464.00	\$ 2,288,000
	1967	2,520	1,880	4.9	9,200	Ton	\$ 220.00	\$ 2,024,000
Lemons, Total	** 1968	4,690	4,470	12.8	57,200	Ton	148.16	8,475,000
	1967	5,213	4,950	13.5	67,000	Ton	111.09	7,443,000
Market	1968				39,000	Ton	190.00	7,410,000
	1967				38,500	Ton	160.00	6,160,000
Processing	1968				18,200	Ton	58.50	1,065,000
	1967				28,500	Ton	45.00	1,283,000
Oranges	** 1968	100	59	4.7	280	Ton	184.00	51,500
	1967	105	70	4.4	315	Ton	130.00	41,000



FRUIT AND NUT CROPS Continued

Crop	Year	Acreage		Production		Unit	Value	
		Planted	Bearing	Per Acre	Total		Per Unit	Total
Strawberries, Total	1968	600	600	17.0	10,200	Ton	\$ 453.73	\$ 4,628,000
	1967	630	630	16.0	10,080	Ton	\$ 435.50	\$ 4,390,000
Market	1968				7,540	Ton	508.00	3,830,000
	1967				7,860	Ton	478.00	3,757,000
Processing	1968				2,660	Ton	300.00	798,000
	1967				2,220	Ton	285.00	633,000
Walnuts	** 1968	1,910	1,780	0.41	730	Ton	580.00	423,000
	1967	1,651	1,536	0.66	1,020	Ton	500.00	510,000
Miscellaneous	** 1968	190	170					175,000
	1967	201	181					150,000
TOTAL	** 1968	10,030	8,839					\$16,040,500
	1967	10,324	9,244					\$14,558,000

\*\* New acreage survey by State

NURSERY PRODUCTS: Production Area, Sales and Value 1967-1968

Item	Year	Production Area		Quantity Sold By Producers	Unit	Per Unit	Total
		House Sq. Ft.	Field Acres				
Citrus and Subtropical	1968	6,500	1	8,700	Plt	\$ 2.50	\$ 21,800
	1967	7,560		10,300	Plt	\$ 2.25	\$ 23,200
Ornamental Trees and Shrubs	1968	402,000	77				964,000
	1967	329,000	110				1,121,000
Herbaceous Perennials	1968	360,000	6				303,000
	* 1967	407,000	5				318,000
Indoor Decorative, Total	1968	1,605,000					1,094,000
	* 1967	1,571,000					937,000
Potted Mums	1968						381,000
Orchid Plants	1968						336,000
Miscellaneous	1968						377,000
Miscellaneous	1968	180,000	1				213,000
	1967	92,000					97,400
TOTAL	1968	2,553,500	85				\$ 2,595,800
	* 1967	2,406,560	115				\$ 2,496,600
Cut Flowers	1968	3,737,000	630				\$ 4,599,000
	1967	2,433,000	405				\$ 2,821,000
Carnations	1968						639,000
Chrysanthemums	1968						580,000
Orchids	1968						1,536,000
Miscellaneous	1968						1,844,000

\* Revised

LIVESTOCK AND POULTRY: Production and Value 1967-1968

Item	Year	Production		Unit	Value	
		No. of Head	Total Liveweight		Per Unit	Total
Cattle and Calves	1968	102,000	820,000	Cwt	\$ 25.30	\$ 20,746,000
	1967	110,000	880,000	Cwt	\$ 24.50	\$ 21,560,000
Sheep and Lambs	1968	7,930	8,100	Cwt	18.50	150,000
	1967	7,540	7,940	Cwt	17.05	135,000
Hogs and Pigs	1968	1,240	1,650	Cwt	28.00	46,200
	1967	3,300	5,250	Cwt	23.75	125,000
Broilers & Fryers	1968	23,500	76,400	Lbs	0.24	18,300
	1967	22,300	72,000	Lbs	0.22	16,100
Other Chickens	1968	162,000	729,000	Lbs	0.07	51,000
	1967	260,000	1,040,000	Lbs	0.05	52,000
Turkeys	1968	90,000	2,036,000	Lbs	0.23	468,000
	1967	132,000	2,827,000	Lbs	0.22	622,000
Miscellaneous	1968					45,000
	1967					50,000
TOTAL	1968				\$	21,524,500
	1967				\$	22,560,100

LIVESTOCK AND POULTRY PRODUCTS: Production, Value 1967-1968

Item	Year	Production	Unit	Value	
				Per Unit	Total
Milk, Total	+ 1968	851,239	Cwt	\$ 5.66	\$ 4,818,060
	* 1967	861,760	Cwt	\$ 5.43	\$ 4,677,320
Market	+ 1968	851,000	Cwt	5.66	4,817,000
	* 1967	860,000	Cwt	5.43	4,670,000
Manufacturing <sup>+</sup>	+ 1968	239	Cwt	4.45	1,060
	* 1967	1,760	Cwt	4.16	7,320
Wool	1968	94,300	Lbs	0.47	44,300
	1967	88,400	Lbs	0.45	39,800
Eggs, Chicken	1968	6,560,000	Doz	0.35	2,296,000
	1967	6,146,000	Doz	0.34	2,090,000
Miscellaneous	1968				50,000
	1967				78,000
TOTAL	+ 1968			\$	7,208,360
	* 1967			\$	6,885,120

+ Preliminary

\* Revised

SEED CROPS: Acreage, Production, Value 1967-1968

Crop	Year	Harvested Acreage	Production		Unit	Value	
			Per Acre	Total		Per Unit	Total
Bean, Seed	1968	5,730	0.8	4,580	Ton	\$ 355.00	\$ 1,626,000
	1967	6,410	0.9	5,770	Ton	\$ 360.00	\$ 2,077,000
Flower Seed	1968	1,760					1,672,000
	1967	1,700					1,402,000
Vegetable Seed	1968	213					98,500
	1967	100					48,000
Miscellaneous	1968	980					42,000
	1967	670					120,000
TOTAL	1968	8,683					\$ 3,438,500
	1967	8,880					\$ 3,647,000

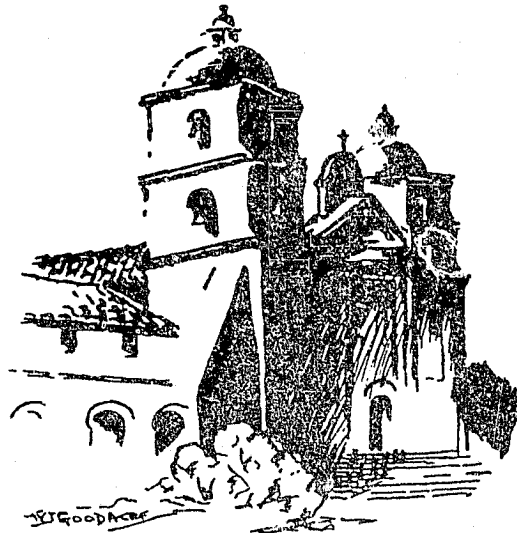
S U M M A R Y  
1967-1968

	<u>Year</u>	<u>Acreage</u>	<u>Total</u>
Fruit and Nut Crops	1968	10,030	\$16,040,500
	1967	10,324	\$14,558,000
Vegetable Crops	1968	27,263	23,610,400
	1967	25,942	22,414,000
Field Crops	1968	644,520	11,278,400
	1967	647,730	12,635,100
Nursery Products	1968	144	2,595,800
	1967	170	2,496,600
Cut Flowers	1968	716	4,599,000
	1967	461	2,821,000
Seed Crops	1968	8,683	3,438,500
	1967	8,880	3,647,000
Livestock and Poultry	1968		21,524,500
	1967		22,560,100
Livestock and Poultry Products	+ 1968		7,208,360
	* 1967		6,885,120
TOTAL	1968	691,356	\$90,295,460
	1967	693,507	\$88,016,920

+ Preliminary  
\* Revised

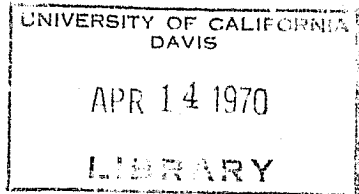
Three vertical black bars of varying widths are positioned on the left side of the page. The bars are solid black and extend from the top to the bottom of the page. The middle bar is the narrowest, while the two outer bars are wider and of equal width.

1969



# Agricultural Crop Report

1969



DEPARTMENT OF AGRICULTURE  
SANTA BARBARA COUNTY, CALIFORNIA

Mr. Jerry W. Fielder, Director  
California Department of Agriculture  
and  
The Honorable Board of Supervisors of Santa Barbara County

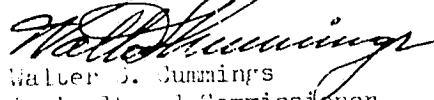
George H. Clyde, Chairman  
Joe J. Callahan                      Daniel G. Grant  
F. H. Beattie                         Curtis Lunnell

Gentlemen:

The acreages shown in this report are the planted and bearing acres of fruit and nut crops and the harvested acres of field and vegetable crops. Most of the harvested acreage and all production and value figures have been rounded. Some of the figures from the 1968 crop report have been revised and are indicated by \*. The gross value shown is the F.O.B. value at first point of sale which includes the cost of harvesting, grading and packaging as well as the cost of production. This report does NOT indicate returns or profits to the producer or farmer. Farm production expenses have continued to climb, particularly in labor-sensitive crops resulting in lower net farm income. It does, however, show the amount of new wealth contributed by agriculture to the economy of Santa Barbara County. The total value of agricultural production reached an all time high in 1969 of \$92,911,150. Agriculture continues to be one of the basic factors in the economy of Santa Barbara County.

My sincere thanks are extended to the many individual, organizations, companies and the State Department of Agriculture for their fine cooperation in making available the necessary data from which this crop report is compiled.

Sincerely yours,

  
Walter S. Cummings  
Agricultural Commissioner

1969

VEGETABLE CROPS: Acreage, Production, Value 1968-1969

Crop	Year	Harvested Acreage	Production		Unit	Value	
			Per Acre	Total		Per Unit	Total
Artichokes	1969	320	4.4	1,410	Ton	\$ 269.00	\$ 379,000
	1968	375	4.0	1,500	Ton	\$ 191.00	\$ 286,000
Beans, Lima, Frozen	1969	2,000	1.5	3,000	Ton	190.00	570,000
	1968	2,600	1.6	4,160	Ton	180.00	749,000
Broccoli, Total	1969	8,100	3.8	31,000	Ton	161.29	5,000,000
	1968	9,000	4.5	40,500	Ton	156.81	6,351,000
Market	1969			2,700	Ton	227.00	613,000
	1968			4,800	Ton	200.00	960,000
Frozen	1969			28,300	Ton	155.00	4,387,000
	1968			35,700	Ton	151.00	5,391,000
Cabbage	1969	480	18.0	8,640	Ton	68.00	588,000
	1968	670	18.1	12,100	Ton	87.00	1,053,000
Carrots	1969	1,230	15.0	18,400	Ton	80.00	1,472,000
	1968	1,670	14.6	24,400	Ton	70.00	1,708,000
Cauliflower	1969	1,530	5.8	8,830	Ton	209.29	1,848,000
	1968	1,580	5.3	8,300	Ton	204.22	1,695,000
Market	1969			5,180	Ton	230.00	1,191,000
	1968			5,150	Ton	225.00	1,159,000
Frozen	1969			3,650	Ton	180.00	657,000
	1968			3,150	Ton	170.00	536,000
Celery	1969	780	27.0	21,100	Ton	120.00	2,532,000
	1968	1,070	27.1	29,000	Ton	90.00	2,610,000
Endive	1969	60	9.0	540	Ton	177.00	95,600
	1968	132	12.0	1,580	Ton	172.00	272,000
Lettuce	1969	4,280	12.0	51,400	Ton	75.00	3,855,000
	1968	4,010	13.0	52,100	Ton	80.00	4,168,000
Peppers, Dry	1969	760	1.4	1,060	Ton	595.00	631,000
	1968	800	1.8	1,440	Ton	551.00	793,000
Potatoes	1969	2,430	18.0	43,700	Ton	52.00	2,272,000
	1968	2,110	16.3	34,400	Ton	48.50	1,668,000
Romaine	1969	200	18.0	3,600	Ton	73.00	263,000
	1968	310	19.5	6,040	Ton	60.00	362,000
Tomatoes, Fresh and Canning	1969	1,200	23.5	28,200	Ton	30.30	854,000
	1968	1,470	19.0	27,900	Ton	35.80	999,000

VEGETABLE CROPS Continued

Crop	Year	Harvested Acreage	Production		Unit	Value	
			Per Acre	Total		Per Unit	Total
**Miscellaneous	1969	1,600					\$ 1,107,000
	* 1968	1,496					\$ 896,400

\*\* Includes Anise, Brussels Sprouts, Cucumbers, Green Peppers, Parsley, Turnips, Sweet Corn, Parsnips, Spinach, Pumpkins, Squash and other miscellaneous vegetables.

* Revised							
TOTAL	1969	24,970					\$21,466,600
	1968	27,293					\$23,610,400

FIELD CROPS: Acreage, Production, Value 1968-1969

Crop	Year	Harvested Acreage	Production		Unit	Value	
			Per Acre	Total		Per Unit	Total
Barley	1969	9,900	0.9	8,910	Ton	\$ 50.00	\$ 446,000
	1968	10,100	0.8	8,080	Ton	\$ 46.00	\$ 372,000
Beans, total	1969	12,670	0.85	10,724	Ton	240.61	2,580,300
	1968	14,980	0.66	9,845	Ton	297.28	2,926,700
Baby Limas	1969	110	0.9	99	Ton	175.00	17,300
	1968	175	0.46	80	Ton	146.00	11,700
Small Whites	1969	2,490	1.0	2,490	Ton	205.00	510,000
	1968	2,770	0.89	2,460	Ton	230.00	566,000
Limas	1969	6,300	0.9	5,700	Ton	250.00	1,425,000
	1968	8,470	0.7	5,930	Ton	330.00	1,957,000
Garbanzos	1969	3,310	0.6	1,990	Ton	260.00	517,000
	1968	2,990	0.3	900	Ton	294.00	265,000
Fordhooks	1969	310	1.1	340	Ton	260.00	88,400
	1968	375	1.0	375	Ton	280.00	105,000
Miscellaneous	1969	150	0.7	105	Ton	215.00	22,600
	1968	200	0.5	100	Ton	220.00	22,000
Hay, Alfalfa	1969	12,000	8.0	96,000	Ton	29.50	2,832,000
	1968	10,300	8.0	82,400	Ton	28.50	2,348,000
Hay, Grain	1969	11,100	2.2	24,000	Ton	29.00	696,000
	1968	12,000	1.8	21,600	Ton	28.00	605,000
Oats	1969	1,520	0.6	910	Ton	52.00	47,300
	1968	620	0.5	310	Ton	51.50	16,000



FIELD CROPS Continued

Crop	Year	Harvested Acreage	Production		Unit	Value	
			Per Acre	Total		Per Unit	Total
Pasture, Irrigated	1969	9,540				\$ 60.00	\$ 572,000
	1968	8,460				\$ 60.00	\$ 508,000
Pasture, Other	1969	575,000				4.00	2,300,000
	1968	575,000				4.00	2,300,000
Silage, Corn	1969	1,050	30.0	31,500	Ton	10.00	315,000
	1968	1,260	30.0	37,800	Ton	10.00	378,000
Sugar Beets	1969	5,040	21.5	108,000	Ton	13.90	1,501,000
	1968	3,430	30.0	103,000	Ton	14.50	1,494,000
Wheat	1969	4,000	0.4	1,600	Ton	50.00	80,000
	1968	3,970	0.21	830	Ton	49.00	40,700
Miscellaneous	1969	4,200					280,000
	1968	4,400					290,000
TOTAL	1969	646,020					\$11,649,600
	1968	644,520					\$11,278,400

FRUIT AND NUT CROPS: Acreage, Production, Value 1968-1969

Crop	Year	Acreage		Production		Unit	Value	
		Planted	Bearing	Per Acre	Total		Per Unit	Total
Avocados	1969	2,670	1,920	4.3	8,330	Ton	\$ 340.00	\$ 2,832,000
	1968	2,540	1,760	2.8	4,930	Ton	\$ 464.00	\$ 2,288,000
Lemons, Total	1969	4,450	4,160	13.5	56,300	Ton	168.38	9,480,000
	1968	4,690	4,470	12.8	57,200	Ton	148.16	8,475,000
Market	1969				37,900	Ton	221.00	8,376,000
	1968				39,000	Ton	190.00	7,410,000
Processing	1969				18,400	Ton	60.00	1,104,000
	1968				18,200	Ton	58.50	1,065,000
Oranges	1969	110	80	3.0	240	Ton	150.00	36,000
	1968	100	59	4.7	280	Ton	184.00	51,500
Strawberries, Total	1969	580	580	18.6	10,790	Ton	481.28	5,193,000
	1968	600	600	17.0	10,200	Ton	453.73	4,628,000
Market	1969				8,780	Ton	516.00	4,530,000
	1968				7,540	Ton	508.00	3,830,000
Processing	1969				2,010	Ton	330.00	663,000
	1968				2,660	Ton	300.00	798,000

FRUIT AND NUT CROPS Continued

Crop	Year	Acreage		Production		Unit	Value	
		Planted	Bearing	Per Acre	Total		Per Unit	Total
Walnuts	1969	1,920	1,830	0.8	1,460	Ton	\$ 492.00	\$ 712,000
	1968	1,910	1,780	0.4	730	Ton	\$ 580.00	\$ 423,000
Miscellaneous	1969	200	170					150,000
	1968	190	170					175,000
TOTAL	1969	9,930	8,740					\$18,409,000
	1968	10,030	8,839					\$16,040,500

NURSERY PRODUCTS: Production Area, Sales and Value 1968-1969

Item	Year	Production Area		Quantity Sold By Producers	Unit	Value	
		House Sq. Ft.	Field Acres			Per Unit	Total
Citrus and Subtropical	1969	6,500	1	5,200	Plt	\$ 2.50	\$ 13,000
	1968	6,500	1	8,700	Plt	\$ 2.50	\$ 21,800
Ornamental Trees and Shrubs	1969	390,000	63				730,000
	1968	402,000	77				964,000
Herbaceous Perennials	1969	65,000	7				138,000
	* 1968	160,000	6				203,000
Indoor Decorative Total	1969	1,784,000					1,297,000
	1968	1,605,000					1,094,000
Potted Mums	1969						410,000
	1968						381,000
Orchid Plants	1969						291,000
	1968						336,000
Miscellaneous	1969						596,000
	1968						377,000
Miscellaneous	1969	352,000	1				381,000
	* 1968	380,000	1				313,000
* Revised							
TOTAL	1969	2,597,500	72				\$ 2,559,000
	1968	2,553,000	85				\$ 2,595,800
Cut Flowers, Total	1969	4,100,000	460				\$ 4,945,000
	1968	3,737,000	630				\$ 4,599,000
Carnations	1969						713,000
	1968						639,000
Chrysanthemums	1969						600,000
	1968						580,000
Orchids	1969						1,710,000
	1968						1,536,000
Miscellaneous	1969						1,922,000
	1968						1,844,000

LIVESTOCK AND POULTRY: Production and Value 1968-1969

Item	Year	Production		Unit	Value	
		No. of Head	Total Liveweight		Per Unit	Total
Cattle and Calves	1969	100,000	812,000	Cwt	\$ 27.80	\$22,574,000
	1968	102,000	820,000	Cwt	\$ 25.30	\$20,746,000
Sheep and Lambs	1969	9,000	9,030	Cwt	20.60	186,000
	1968	7,930	8,100	Cwt	18.50	150,000
Hogs and Pigs	1969	1,260	1,980	Cwt	27.50	54,400
	1968	1,240	1,650	Cwt	28.00	46,200
Broilers & Fryers	1969	12,100	39,300	Lbs	0.26	10,200
	1968	23,500	76,400	lbs	0.24	18,300
Other Chickens	1969	160,000	704,000	Lbs	0.08	56,300
	1968	162,000	729,000	lbs	0.07	51,000
Turkeys	1969	68,000	1,500,000	Lbs	0.24	360,000
	1968	90,000	2,036,000	Lbs	0.23	468,000
Miscellaneous	1969					10,000
	1968					45,000
TOTAL	1969					\$23,280,900
	1968					\$21,524,500

LIVESTOCK AND POULTRY PRODUCTS: Production, Value 1968-1969

Item	Year	Production	Unit	Value	
				Per Unit	Total
Milk, Total	+ 1969	846,450	Cwt	\$ 5.77	\$ 4,882,950
	* 1968	863,280	Cwt	\$ 5.66	\$ 4,886,320
Market	+ 1969	846,000	Cwt	5.77	4,881,000
	* 1968	863,000	Cwt	5.66	4,885,000
Manufacturing+	1969	450	Cwt	4.34	1,950
	* 1968	280	Cwt	4.73	1,320
Wool	1969	101,000	Lbs	0.48	48,500
	1968	94,300	Lbs	0.47	44,300
Eggs, Chicken	1969	6,115,000	Doz	0.37	2,263,000
	1968	6,560,000	Doz	0.35	2,296,000
Miscellaneous	1969				75,000
	1968				50,000
TOTAL	1969				\$ 7,269,450
	1968				\$ 7,276,620

+ Preliminary  
\* Revised

SEED CROPS: Acreage, Production, Value 1968-1969

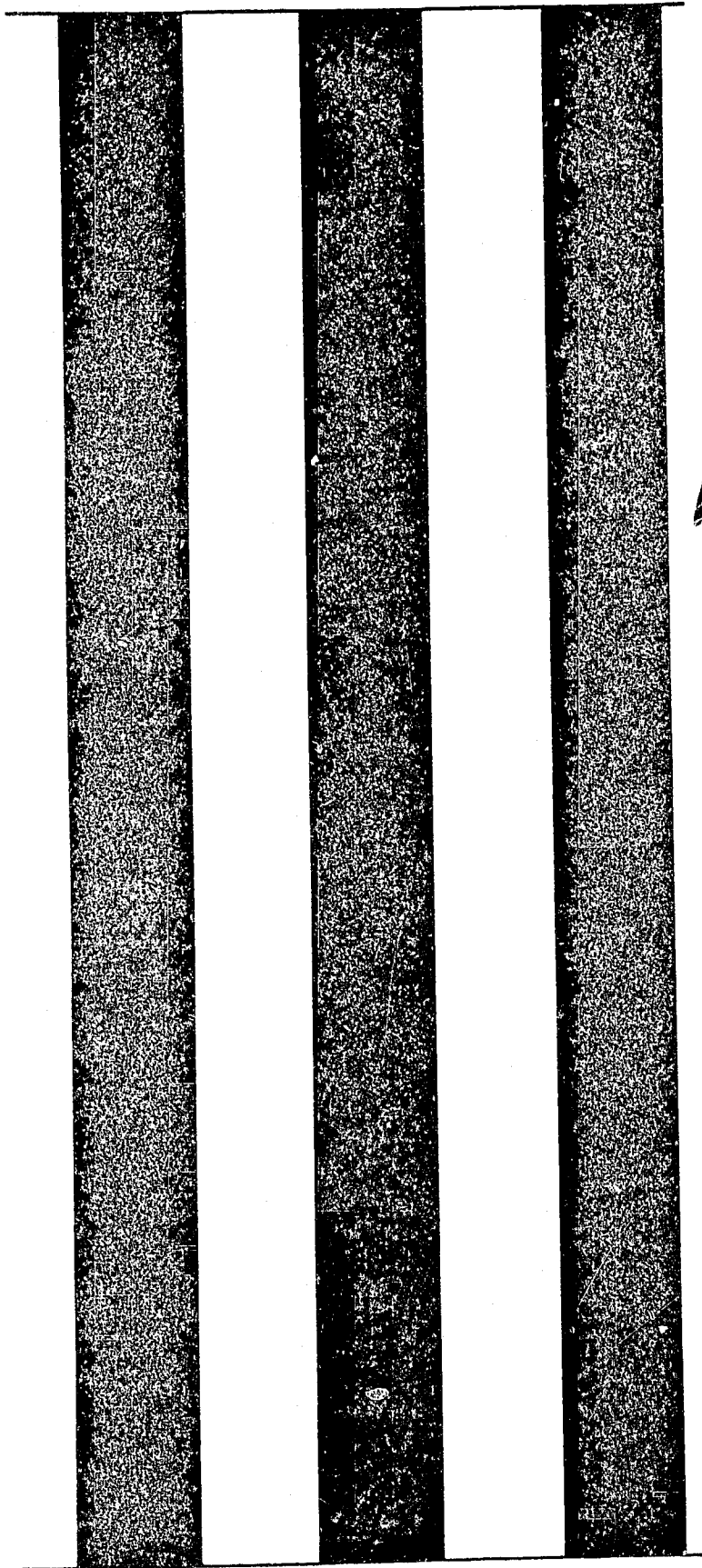
Crop	Year	Harvested Acreage	Production		Unit	Value	
			Per Acre	Total		Per Unit	Total
Bean, Seed	1969	4,530	0.9	4,080	Ton	\$ 350.00	\$ 1,428,000
	1968	5,730	0.8	4,580	Ton	\$ 355.00	\$ 1,626,000
Flower Seed	1969	1,670					1,670,000
	1968	1,760					1,672,000
Vegetable Seed	1969	210					97,600
	1968	213					98,500
Miscellaneous	1969	1,470					136,000
	1968	980					42,000
TOTAL	1969	7,880					\$ 3,331,600
	1968	8,683					\$ 3,438,500

S U M M A R Y  
1968-1969

	Year	Acreage	Total
Fruit and Nut Crops	1969	9,930	\$18,409,000
	1968	10,030	\$16,040,500
Vegetable Crops	1969	24,970	21,466,600
	1968	27,263	23,610,400
Field Crops	1969	646,020	11,649,600
	1968	644,520	11,278,400
Nursery Products	1969	132	2,559,000
	1968	144	2,595,800
Cut Flowers	1969	554	4,945,000
	1968	716	4,599,000
Seed Crops	1969	7,880	3,331,600
	1968	8,683	3,438,500
Livestock and Poultry	1969		23,280,900
	1968		21,524,500
Livestock and Poultry Products	+ 1969		7,269,450
	* 1968		7,276,620
TOTAL	1969	689,486	\$92,911,150
	1968	691,356	\$90,363,720

+ Preliminary

\* Revised



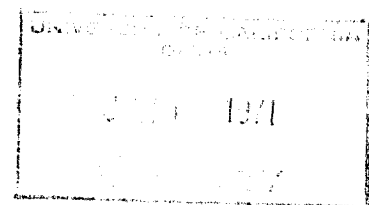
1970

Department of Agriculture  
Santa Barbara County  
Report (1970), 1970



# Agricultural Crop Report 1970

DEPARTMENT OF AGRICULTURE  
SANTA BARBARA COUNTY, CALIFORNIA



Mr. Jerry W. Fielder, Director  
California Department of Agriculture  
and  
The Honorable Board of Supervisors of Santa Barbara County

Daniel G. Grant, Chairman  
F. H. Beattie                      Curtis Tunnell  
C. F. Catterlin                    George H. Clyde

Gentlemen:

The acreages shown in this report are the planted and bearing acres of fruit and nut crops and the harvested acres of field and vegetable crops. Most of the harvested acreage and all production and value figures have been rounded. Some of the figures from the 1969 crop report have been revised and are indicated by \*. The gross value shown is the F.O.B. value at first point of sale which includes the cost of harvesting, grading and packaging as well as the cost of production. This report does NOT indicate returns or profits to the producer or farmer. It does, however, show the amount of new wealth contributed by agriculture to the economy of Santa Barbara County. Farm production expenses have continued to climb, particularly in labor-sensitive crops, resulting in lower net farm income. The total value of agricultural production reached an all time high in 1970 of \$97,364,380. Agriculture continues to be one of the basic factors in the economy of Santa Barbara County.

My sincere thanks are extended to the many individual, organizations, companies and the State Department of Agriculture for their fine cooperation in making available the necessary data from which this crop report is compiled.

Sincerely yours,



Walter S. Cummings  
Agricultural Commissioner

1970

VEGETABLE CROPS: Acreage, Production, Value 1969-1970

Crop	Year	Harvested Acreage	Production		Unit	Value	
			Per Acre	Total		Per Unit	Total
Artichokes	1970	320	4.3	1,380	Ton	\$ 245.00	\$ 338,000
	1969	320	4.4	1,410	Ton	\$ 269.00	\$ 379,000
Beans, Lima, Frozen	1970	700	1.4	980	Ton	175.00	172,000
	1969	2,000	1.5	3,000	Ton	190.00	570,000
Broccoli, Total	1970	8,540	3.9	33,590	Ton	162.64	5,463,000
	1969	8,100	3.8	31,000	Ton	161.29	5,000,000
Market	1970			2,590	Ton	230.25	596,000
	1969			2,700	Ton	227.00	613,000
Frozen	1970			31,000	Ton	157.00	4,867,000
	1969			28,300	Ton	155.00	4,387,000
Cabbage	1970	870	17.7	15,400	Ton	64.00	986,000
	1969	480	18.0	8,640	Ton	68.00	588,000
Carrots	1970	2,210	21.9	48,400	Ton	50.00	2,420,000
	1969	1,230	15.0	18,400	Ton	80.00	1,472,000
Cauliflower	1970	1,550	6.1	9,480	Ton	205.59	1,949,000
	1969	1,530	5.8	8,830	Ton	209.29	1,848,000
Market	1970			5,430	Ton	232.00	1,260,000
	1969			5,180	Ton	230.00	1,191,000
Frozen	1970			4,050	Ton	170.00	689,000
	1969			3,650	Ton	180.00	657,000
Celery	1970	1,000	26.7	26,700	Ton	111.25	2,970,000
	1969	780	27.0	21,100	Ton	120.00	2,532,000
Endive	1970	70	10.3	720	Ton	147.25	106,000
	1969	60	9.0	540	Ton	177.00	95,600
Lettuce	1970	5,630	12.3	69,250	Ton	92.00	6,371,000
	1969	4,280	12.0	51,400	Ton	75.00	3,855,000
Peppers, Dry	1970	670	1.8	1,210	Ton	569.00	689,000
	1969	760	1.4	1,060	Ton	595.00	631,000
Potatoes	1970	2,330	18.0	41,900	Ton	55.00	2,305,000
	1969	2,430	18.0	43,700	Ton	52.00	2,272,000
Romaine	1970	230	24.6	5,660	Ton	74.35	421,000
	1969	200	18.0	3,600	Ton	73.00	263,000
Tomatoes, Fresh and Canning	1970	840	20.2	17,000	Ton	30.00	510,000
	1969	1,200	23.5	28,200	Ton	30.30	854,000



VEGETABLE CROPS Continued

Crop	Year	Harvested Acreage	Production		Unit	Value	
			Per Acre	Total		Per Unit	Total
Miscellaneous	1970	1,680					\$ 1,230,000
	1969	1,600					\$ 1,107,000
TOTAL	1970	26,640					\$25,930,000
	1969	24,970					\$21,466,600

FIELD CROPS: Acreage, Production, Value 1969-1970

Crop	Year	Harvested Acreage	Production		Unit	Value	
			Per Acre	Total		Per Unit	Total
Barley	1970	10,600	0.7	7,420	Ton	\$ 44.75	\$ 332,000
	1969	9,900	0.9	8,910	Ton	\$ 50.00	\$ 446,000
Beans, Total	1970	10,830	0.6	6,845	Ton	266.66	1,825,300
	1969	12,670	0.9	10,724	Ton	240.61	2,580,000
Small Whites	1970	850	1.0	850	Ton	240.00	204,000
	1969	2,490	1.0	2,490	Ton	205.00	510,000
Limas	1970	6,580	0.7	4,610	Ton	260.00	1,199,000
	1969	6,300	0.9	5,700	Ton	250.00	1,425,000
Garbanzos	1970	3,150	0.4	1,260	Ton	310.00	391,000
	1969	3,310	0.6	1,990	Ton	260.00	517,000
Miscellaneous	1970	250	0.5	125	Ton	250.50	31,300
	1969	570	0.9	544	Ton	235.85	128,300
Hay, Alfalfa	1970	12,100	7.5	90,211	Ton	32.00	2,886,000
	1969	12,000	8.0	96,000	Ton	29.00	2,832,000
Hay, Grain	1970	13,500	1.8	24,300	Ton	34.00	826,000
	1969	11,100	2.2	24,000	Ton	29.00	696,000
Oats	1970	1,170	0.6	700	Ton	55.57	38,900
	1969	1,520	0.6	910	Ton	52.00	47,300
Pasture, Irrigated	1970	9,480				60.00	569,000
	1969	9,540				60.00	572,000
Pasture, Other	1970	575,000				3.75	2,160,000
	1969	575,000				4.00	2,300,000
Silage, Corn	1970	910	30.7	27,900	Ton	10.50	293,000
	1969	1,050	30.0	31,500	Ton	10.00	315,000
Sugar Beets	1970	4,770	24.3	116,000	Ton	15.38	1,784,000
	1969	5,040	21.5	108,000	Ton	15.90	1,501,000

FIELD CROPS Continued

Crop	Year	Harvested Acreage	Production		Unit	Value	
			Per Acre	Total		Per Unit	Total
Wheat	1970	2,250	0.2	450	Ton	\$ 48.00	\$ 21,600
	1969	4,000	0.4	1,600	Ton	\$ 50.00	\$ 80,000
Miscellaneous	1970	3,360					175,000
	1969	4,200					280,000
TOTAL	1970	643,970					\$10,910,800
	1969	646,020					\$11,649,600

FRUIT AND NUT CROPS: Acreage, Production, Value 1969-1970

Crop	Year	Acreage		Production		Unit	Value	
		Planted	Bearing	Per Acre	Total		Per Unit	Total
Avocados	1970	2,770	2,070	3.2	6,540	Ton	\$ 720.00	\$ 4,709,000
	1969	2,670	1,920	4.3	8,330	Ton	\$ 340.00	\$ 2,832,000
Lemons, Total	1970	4,460	4,100	11.8	52,400	Ton	166.28	8,713,000
	1969	4,450	4,160	13.5	56,300	Ton	168.38	9,480,000
Market	1970				33,900	Ton	224.00	7,594,000
	1969				37,900	Ton	221.00	8,376,000
Processing	1970				18,500	Ton	60.50	1,119,000
	1969				18,400	Ton	60.00	1,104,000
Oranges	1970	110	80	5.0	400	Ton	137.50	55,000
	1969	110	80	3.0	240	Ton	150.00	36,000
Strawberries, Total	1970	550	550	19.8	10,890	Ton	424.89	4,627,000
	1969	580	580	18.6	10,790	Ton	481.28	5,193,000
Market	1970				7,120	Ton	480.50	3,421,000
	1969				8,780	Ton	516.00	4,530,000
Processing	1970				3,770	Ton	320.00	1,206,000
	1969				2,010	Ton	330.00	663,000
Walnuts	1970	1,910	1,860	0.5	900	Ton	450.00	405,000
	1969	1,920	1,830	0.8	1,460	Ton	492.00	718,000
Miscellaneous	1970	238	170					160,000
	1969	200	170					150,000
TOTAL	1970	10,038	8,830					\$18,669,000
	1969	9,930	8,740					\$18,409,000

NURSERY PRODUCTS: Production Area, Sales and Value 1969-1970

Item	Year	Production Area		Quantity Sold By Producers	Unit	Value	
		House Sq. Ft.	Field Acres			Per Unit	Total
Citrus and Subtropical	1970	7,100	1	10,400	Plt	2.75 \$	28,600
	1969	6,500	1	5,200	Plt	2.50 \$	13,000
Ornamental Trees and Shrubs	1970	416,000	68				796,000
	1969	390,000	63				730,000
Herbaceous Perennials	1970	105,000	5				198,000
	1969	65,000	7				138,000
Indoor Decorative Total	1970	1,959,000					1,504,000
	1969	1,784,000					1,297,000
Orchid Plants	1970						371,000
	1969						291,000
Miscellaneous	1970						1,133,000
	1969						1,006,000
Miscellaneous	1970	620,000					514,000
	1969	352,000	1				381,000
TOTAL	1970	3,107,100	74				\$ 3,040,600
	1969	2,597,500	72				\$ 2,559,000
<hr/>							
Cut Flowers, Total	1970	3,856,000	475				\$ 5,197,000
	*1969	4,100,000	556				\$ 4,945,000
Carnations	1970						1,039,000
	1969						713,000
Chrysanthemums	1970						787,000
	1969						600,000
Orchids	1970						1,816,000
	1969						1,710,000
Miscellaneous	1970						1,555,000
	1969						1,922,000

\* Revised

LIVESTOCK AND POULTRY: Production and Value 1969-1970

Item	Year	Production		Unit	Value	
		No. of Head	Total Liveweight		Per Unit	Total
Cattle and Calves	1970	101,000	772,000	Cwt \$	28.50	\$22,002,000
	1969	100,000	812,000	Cwt \$	27.80	\$22,574,000
Sheep and Lambs	1970	8,719	8,830	Cwt	21.18	187,000
	1969	9,000	9,030	Cwt	20.60	186,000
Hogs and Pigs	1970	1,530	2,360	Cwt	28.00	66,100
	1969	1,260	1,980	Cwt	27.50	54,400
Other Chickens	1970	212,000	890,000	Lbs	0.10	89,000
	1969	160,000	704,000	Lbs	0.08	56,300
Turkeys	1970	79,900	1,723,000	Lbs	0.21	364,000
	1969	68,000	1,500,000	Lbs	0.24	360,000
Miscellaneous	1970					40,000
	1969					50,200
TOTAL	1970					\$22,748,100
	1969					\$23,280,900

LIVESTOCK AND POULTRY PRODUCTS: Production, Value 1969-1970

Item	Year	Production	Unit	Value	
				Per Unit	Total
Milk, Total	+ 1970	717,210	Cwt \$	5.86	\$ 4,202,880
	* 1969	825,370	Cwt \$	5.75	\$ 4,745,660
Market	+ 1970	717,000	Cwt	5.86	4,202,000
	* 1969	825,000	Cwt	5.75	4,744,000
Manufacturing+	1970	210	Cwt	4.17	880
	* 1969	370	Cwt	4.48	1,660
Wool	1970	90,700	Lbs	0.36	32,700
	1969	101,000	Lbs	0.48	48,500
Eggs, Chicken	1970	6,197,000	Doz	0.38	2,355,000
	1969	6,115,000	Doz	0.37	2,263,000
Miscellaneous	1970				50,000
	1969				75,000
TOTAL	1970				\$ 6,640,580
	1969				\$ 7,132,160

+ Preliminary  
\* Revised

SEED CROPS: Acreage, Production, Value 1969-1970

Crop	Year	Harvested Acreage	Production		Unit	Value	
			Per Acre	Total		Per Unit	Total
Bean, Seed	1970	6,100	0.8	4,890	Ton	\$ 345.00	\$ 1,687,000
	1969	4,530	0.9	4,080	Ton	\$ 350.00	\$ 1,428,000
Flower Seed	1970	1,850					2,220,000
	1969	1,670					1,670,000
Vegetable Seed	1970	250					150,000
	1969	210					97,600
Mustard	1970	1,260	0.4	504	Ton	210.00	106,000
	1969	400	0.5	200	Ton	220.00	44,000
Miscellaneous	1970	1,030					65,300
	1969	1,070					92,000
TOTAL	1970	10,490					\$ 4,228,300
	1969	7,880					\$ 3,331,600

S U M M A R Y  
1969-1970

	Year	Acreage	F.O.B Value
Fruit and Nut Crops	1970	10,038	\$ 18,669,000
	1969	9,930	\$ 18,409,000
Vegetable Crops	1970	26,640	25,930,000
	1969	24,970	21,466,600
Field Crops	1970	643,970	10,910,800
	1969	646,020	11,649,600
Nursery Products	1970	145	3,040,600
	1969	132	2,559,000
Cut Flowers	1970	564	5,197,000
	1969	556	4,945,000
Seed Crops	1970	10,490	4,228,300
	1969	7,880	3,331,600
Livestock and Poultry	1970		22,748,100
	1969		23,280,900
Livestock and Poultry Products	+1970		6,640,580
	*1969		7,132,160
TOTAL	1970	691,847	\$ 97,364,380
	*1969	689,488	\$ 92,773,860
+ Preliminary			
* Revised			

Three vertical black bars of varying widths are positioned on the left side of the page. The bars are solid black and extend from near the top to near the bottom of the page. The middle bar is the narrowest, while the two outer bars are wider and of similar width to each other.

1971



Agricultural Crop  
Report  
**1971**

DEPARTMENT OF AGRICULTURE  
SANTA BARBARA COUNTY / CALIFORNIA

Please retain my name on the mailing list for Agricultural Crop Reports

Name .....

Address .....

ZIP .....

No. copies desired \_\_\_\_\_ Signed .....

If this is not returned, your name will be removed from the list to receive next year's Agricultural Crop Report.

Department of Agriculture  
130 East Victoria Street  
Santa Barbara, CA 93101



Mr. Jerry W. Fielder, Director  
California Department of Agriculture  
and  
The Honorable Board of Supervisors of Santa Barbara County


Curtis Funnell, Chairman  
George H. Clyde  
Charles F. Catterlin  
Daniel G. Grant  
Francis H. Beattie

Gentlemen:

The acreages shown in this report are the planted and bearing acres of fruit and nut crops and the harvested acres of field and vegetable crops. Most of the harvested acreage and all production and value figures have been rounded. Some of the figures from the 1970 crop report have been revised and are indicated by \*. The gross value shown is the F.O.B. value at first point of sale which includes the cost of harvesting, grading and packaging as well as the cost of production. This report does NOT indicate returns or profits to the producer or farmer. It does, however, show the amount of new wealth contributed by agriculture to the economy of Santa Barbara County. Farm production expenses have continued to climb, particularly in labor-sensitive crops, resulting in lower net farm income. The total value of agricultural production reached an all time high in 1971 of \$108,081,800. Agriculture continues to be one of the basic factors in the economy of Santa Barbara County.

My sincere thanks are extended to the many individuals, organizations, companies and the State Department of Agriculture for their fine cooperation in making available the necessary data from which this crop report is compiled.

Sincerely yours,

  
Walter S. Cummings  
Agricultural Commissioner

1971

VEGETABLE CROPS: Acreage, Production, Value 1970-1971

Crop	Year	Harvested Acreage	Production		Unit	Value	
			Per Acre	Total		Per Unit	Total
Artichokes	1971	340	5.4	1,830	Ton	\$ 306.00	\$ 560,000
	1970	320	4.3	1,380	Ton	\$ 245.00	\$ 338,000
Beans, Lima, Frozen	1971	1,190	1.6	1,960	Ton	180.00	353,000
	1970	700	1.4	980	Ton	175.00	172,000
Broccoli, Total	1971	10,600	4.0	42,560	Ton	178.69	7,605,000
	1970	8,540	3.9	33,590	Ton	162.64	5,463,000
Market	1971			8,460	Ton	250.00	2,115,000
	1970			2,590	Ton	230.25	596,000
Frozen	1971			34,100	Ton	161.00	5,490,000
	1970			31,000	Ton	157.00	4,867,000
Cabbage	1971	830	18.4	15,300	Ton	84.00	1,284,000
	1970	870	17.7	15,400	Ton	64.00	986,000
Carrots	1971	2,940	18.2	53,700	Ton	90.00	4,815,000
	1970	2,210	21.9	48,400	Ton	50.00	2,420,000
Cauliflower	1971	1,890	5.6	10,660	Ton	216.51	2,308,000
	1970	1,550	6.1	9,480	Ton	205.59	1,949,000
Market	1971			5,290	Ton	261.60	1,384,000
	1970			5,430	Ton	232.00	1,260,000
Frozen	1971			5,370	Ton	172.00	924,000
	1970			4,050	Ton	170.00	689,000
Celery	1971	1,220	29.5	36,000	Ton	141.75	5,103,000
	1970	1,000	26.7	26,700	Ton	111.25	2,970,000
Corn, sweet	1971	250	10.4	2,600	Ton	133.45	347,000
	1970	220	9.5	2,100	Ton	119.50	251,000
Endive	1971	42	10.5	440	Ton	217.25	95,600
	1970	70	10.3	720	Ton	147.25	106,000
Lettuce	1971	5,970	12.8	76,400	Ton	104.30	7,969,000
	1970	5,630	12.3	69,250	Ton	92.00	6,371,000
Peppers, Dry	1971	650	1.1	715	Ton	580.00	415,000
	1970	670	1.8	1,210	Ton	569.00	689,000
Potatoes	1971	2,370	17.6	41,700	Ton	50.30	2,098,000
	1970	2,330	18.0	41,900	Ton	55.00	2,305,000
Romaine	1971	390	21.0	8,190	Ton	65.00	532,000
	1970	230	24.6	5,660	Ton	74.35	421,000

VEGETABLE CROPS Continued

Crop	Year	Harvested Acreage	Production		Unit	Value	
			Per Acre	Total		Per Unit	Total
Tomatoes, Fresh and Canning	1971	380	20.3	7,710	Ton	\$ 40.00	\$ 308,000
	1970	840	20.2	17,000	Ton	\$ 30.00	\$ 510,000
Miscellaneous	1971	1,720					990,000
	1970	1,460					979,000
Total	1971	30,782					\$ 34,782,600
	1970	26,640					\$ 25,930,000

FIELD CROPS: Acreage, Production, Value 1970-1971

Crop	Year	Harvested Acreage	Production		Unit	Value	
			Per Acre	Total		Per Unit	Total
Barley	1971	6,560	0.8	5,250	Ton	\$ 57.00	\$ 299,000
	1970	10,600	0.7	7,420	Ton	\$ 44.75	\$ 332,000
Beans, Total	1971	11,900	0.6	6,650	Ton	357.89	2,380,000
	1970	10,830	0.6	6,845	Ton	266.66	1,825,300
Small Whites	1971	1,170	0.8	920	Ton	305.00	280,000
	1970	850	1.0	850	Ton	240.00	204,000
Limas	1971	5,960	0.6	3,580	Ton	360.00	1,289,000
	1970	6,580	0.7	4,610	Ton	260.00	1,199,000
Garbanzos	1971	3,970	0.4	1,590	Ton	400.00	636,000
	1970	3,150	0.4	1,260	Ton	310.00	391,000
Miscellaneous	1971	800	0.7	560	Ton	312.50	175,000
	1970	250	0.5	125	Ton	250.50	31,300
Hay, Alfalfa	1971	10,400	7.8	78,000	Ton	35.00	2,730,000
	1970	12,100	7.5	90,211	Ton	32.00	2,886,000
Hay, Grain	1971	15,000	1.6	24,000	Ton	34.00	816,000
	1970	13,500	1.8	24,300	Ton	34.00	826,000
Oats	1971	260	0.8	210	Ton	58.00	12,200
	1970	1,170	0.6	700	Ton	55.57	38,900
Pasture, Irrigated	1971	9,290				60.00	557,000
	1970	9,480				60.00	569,000
Pasture, Other	1971	575,000				3.75	2,160,000
	1970	575,000				3.75	2,160,000
Silage, Corn	1971	1,140	30.0	34,200	Ton	10.50	359,000
	1970	910	30.7	27,900	Ton	10.50	293,000

FIELD CROPS Continued

Crop	Year	Harvested Acreage	Production		Unit	Value	
			Per Acre	Total		Per Unit	Total
Sugar Beets	1971	4,730	23.0	109,000	Ton	\$ 14.45	\$ 1,576,000
	1970	4,770	24.3	116,000	Ton	\$ 15.38	\$ 1,784,000
Wheat	1971	5,280	0.3	1,580	Ton	57.00	90,100
	1970	2,250	0.2	450	Ton	48.00	21,600
Miscellaneous	1971	3,550					209,000
	1970	3,360					280,000
Total	1971	643,110					\$10,453,900
	1970	643,970					\$10,910,800

FRUIT AND NUT CROPS: Acreage, Production, Value 1970-1971

Crop	Year	Acreage		Production		Unit	Value	
		Planted	Bearing	Per Acre	Total		Per Unit	Total
Avocados	1971	2,800	2,255	6.8	15,400	Ton	\$ 450.00	\$ 6,930,000
	1970	2,770	2,070	3.2	6,540	Ton	\$ 720.00	\$ 4,709,000
Lemons, Total	1971	4,151	3,758	13.3	49,000	Ton	178.04	8,724,000
	1970	4,460	4,100	11.8	52,400	Ton	166.28	8,713,000
Market	1971				33,100	Ton	232.60	7,679,000
	1970				33,900	Ton	224.00	7,594,000
Processing	1971				15,900	Ton	65.75	1,045,000
	1970				18,500	Ton	60.50	1,119,000
Oranges	1971	98	87	4.7	410	Ton	100.00	41,000
	1970	110	80	5.0	400	Ton	137.50	55,000
Strawberries, Total	1971	540	540	17.7	9,580	Ton	420.15	4,025,000
	1970	550	550	19.8	10,890	Ton	424.89	4,627,000
Market	1971				7,900	Ton	450.00	3,555,000
	1970				7,120	Ton	480.50	3,421,000
Processing	1971				1,680	Ton	280.00	470,000
	1970				3,770	Ton	320.00	1,206,000
Walnuts	1971	1,849	1,836	0.7	1,300	Ton	395.00	514,000
	1970	1,910	1,860	0.5	900	Ton	450.00	405,000
Miscellaneous	1971	995	260					256,000
	1970	238	170					160,000
Total	1971	10,433	8,736					\$20,490,000
	1970	10,038	8,830					\$18,669,000

NURSERY PRODUCTS: Production Area, Sales and Value 1970-1971

Item	Year	Production Area		Quantity Sold By Producers	Unit	Value	
		House Sq. Ft.	Field Acres			Per Unit	Total
Citrus and Subtropical	1971	7,100	1	11,500	Plt \$	2.75 \$	31,600
	1970	7,100	1	10,400	Plt \$	2.75 \$	28,600
Ornamental Trees and Shrubs	1971	368,000	74				876,000
	1970	416,000	68				796,000
Herbaceous Perennials	1971	78,200	5				155,000
	1970	105,000	5				198,000
Indoor Decorative Total	1971	2,453,000					1,055,000
	1970	1,959,000					1,504,000
Orchid Plants	1971						563,000
	1970						371,000
Miscellaneous	1971						492,000
	1970						1,006,000
Miscellaneous	1971	542,000	12				516,000
	1970	620,000					514,000
Total	1971	3,448,300	92			\$	2,633,600
	1970	3,107,100	74			\$	3,040,600
Cut Flowers, Total	1971	4,822,000	281			\$	5,742,000
	1970	3,856,000	475			\$	5,197,000
Carnations	1971						707,000
	1970						1,039,000
Chrysanthemums	1971						1,294,000
	1970						787,000
Orchids	1971						1,886,000
	1970						1,816,000
Miscellaneous	1971						1,855,000
	1970						1,555,000

LIVESTOCK AND POULTRY: Production and Value 1970-1971

Item	Year	Production		Unit	Value	
		No. of Head	Total Liveweight		Per Unit	Total
Cattle and Calves	1971	97,300	740,000	Cwt	\$ 30.00	\$22,200,000
	1970	101,000	772,000	Cwt	\$ 28.50	\$22,002,000
Sheep and Lambs	1971	8,680	9,860	Cwt	20.40	201,000
	1970	8,719	8,830	Cwt	21.18	187,000
Hogs and Pigs	1971	1,810	2,390	Cwt	23.30	55,700
	1970	1,530	2,360	Cwt	28.00	66,100
Other Chickens	1971	188,000	846,000	Lbs	0.07	59,200
	1970	212,000	890,000	Lbs	0.10	89,000
Turkeys	1971	70,000	1,568,000	Lbs	0.22	345,000
	1970	79,900	1,723,000	Lbs	0.21	364,000
Miscellaneous	1971					35,000
	1970					40,000
Total	1971					\$22,895,900
	1970					\$22,748,100

LIVESTOCK AND POULTRY PRODUCTS: Production, Value 1970-1971

Item	Year	Production	Unit	Value	
				Per Unit	Total
Milk, Total	+1971	736,210	Cwt	\$ 6.07	\$ 4,469,000
	*1970	736,210	Cwt	\$ 5.86	\$ 4,313,960
Market	+1971	736,000	Cwt	6.07	4,468,000
	*1970	736,000	Cwt	5.86	4,313,000
Manufacturing	+1971	210	Cwt	4.69	1,000
	*1970	210	Cwt	4.57	960
Wool	1971	76,900	Lbs	0.36	28,000
	1970	90,700	Lbs	0.36	32,700
Eggs, Chicken	1971	6,768,000	Doz	0.33	2,233,000
	1970	6,197,000	Doz	0.38	2,355,000
Miscellaneous	1971				45,000
	1970				50,000
Total	1971				\$ 6,775,000
	1970				\$ 6,751,660

+ Preliminary

\* Revised

SEED CROPS: Acreage, Production, Value 1970-1971

Crop	Year	Harvested Acreage	Production		Unit	Value	
			Per Acre	Total		Per Unit	Total
Bean, Seed	1971	5,750	0.8	4,600	Ton	\$ 355.00	\$ 1,633,000
	1970	6,100	0.8	4,890	Ton	\$ 345.00	\$ 1,687,000
Flower Seed	1971	1,590					2,209,000
	1970	1,850					2,220,000
Vegetable Seed	1971	440					278,000
	1970	250					212,000
Miscellaneous	1971	1,780					189,000
	1970	2,290					171,300
Total	1971	9,556					\$ 4,308,800
	1970	10,490					\$ 4,286,300

S U M M A R Y  
1970-1971

	Year	Acreage	F.O.B Value
Fruit and Nut Crops	1971	10,433	\$ 20,490,000
	1970	10,038	\$ 18,669,000
Vegetable Crops	1971	30,782	34,782,600
	1970	26,640	25,930,000
Field Crops	1971	643,110	10,453,900
	1970	643,970	10,910,800
Nursery Products	1971	200	2,633,600
	1970	145	3,040,600
Cut Flowers	1971	395	5,742,000
	1970	564	5,197,000
Seed Crops	1971	9,556	4,308,800
	1970	10,490	4,286,300
Livestock and Poultry	1971		22,895,900
	1970		22,748,100
Livestock and Poultry Products	+ 1971		6,775,000
	* 1970		6,751,660
Total	1971	694,476	\$108,081,800
	1970	691,847	\$ 97,533,460

+ Preliminary

\* Revised

SEED CROPS: Acreage, Production, Value 1970-1971

Crop	Year	Harvested Acreage	Production		Unit	Value	
			Per Acre	Total		Per Unit	Total
Bean, Seed	1971	5,750	0.8	4,600	Ton	\$ 355.00	\$ 1,633,000
	1970	6,100	0.8	4,890	Ton	\$ 345.00	\$ 1,687,000
Flower Seed	1971	1,590					2,209,000
	1970	1,850					2,220,000
Vegetable Seed	1971	440					278,000
	1970	250					212,000
Miscellaneous	1971	1,780					189,000
	1970	2,290					171,300
Total	1971	9,556					\$ 4,308,800
	1970	10,490					\$ 4,286,300

S U M M A R Y  
1970-1971

	Year	Acreage	F.O.B Value
Fruit and Nut Crops	1971	10,433	\$ 20,490,000
	1970	10,038	\$ 18,669,000
Vegetable Crops	1971	30,782	34,782,600
	1970	26,640	25,930,000
Field Crops	1971	643,110	10,453,900
	1970	643,970	10,910,800
Nursery Products	1971	200	2,633,600
	1970	145	3,040,600
Cut Flowers	1971	395	5,742,000
	1970	564	5,197,000
Seed Crops	1971	9,556	4,308,800
	1970	10,490	4,286,300
Livestock and Poultry	1971		22,895,900
	1970		22,748,100
Livestock and Poultry Products	+ 1971		6,775,000
	* 1970		6,751,660
Total	1971	694,476	\$108,081,800
	1970	691,847	\$ 97,533,460

+ Preliminary

\* Revised