



AgEcon SEARCH
RESEARCH IN AGRICULTURAL & APPLIED ECONOMICS

The World's Largest Open Access Agricultural & Applied Economics Digital Library

This document is discoverable and free to researchers across the globe due to the work of AgEcon Search.

Help ensure our sustainability.

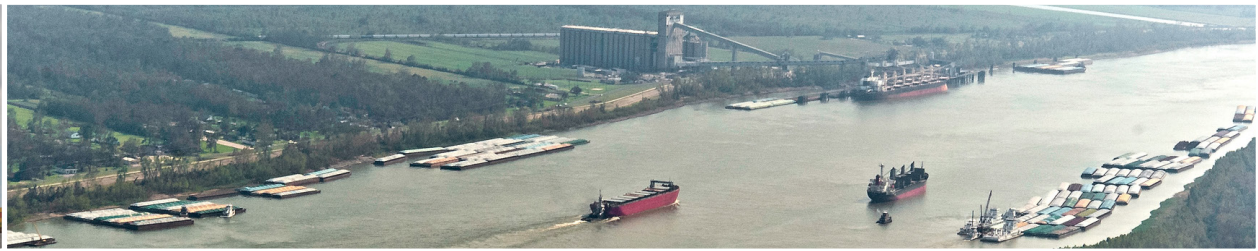
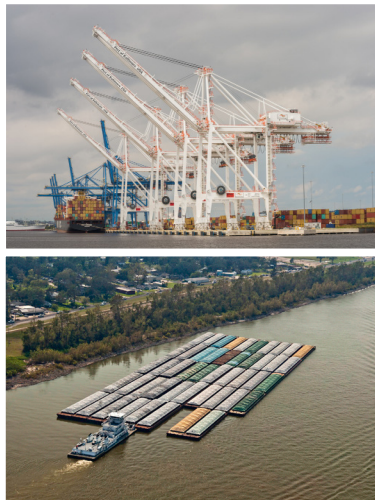
Give to AgEcon Search

AgEcon Search

<http://ageconsearch.umn.edu>

aesearch@umn.edu

*Papers downloaded from **AgEcon Search** may be used for non-commercial purposes and personal study only. No other use, including posting to another Internet site, is permitted without permission from the copyright owner (not AgEcon Search), or as allowed under the provisions of Fair Use, U.S. Copyright Act, Title 17 U.S.C.*



A Reliable Waterway System Is Important to Agriculture

A publication of the Agricultural Marketing Service • www.ams.usda.gov/services/transportation-analysis • FEBRUARY 2022

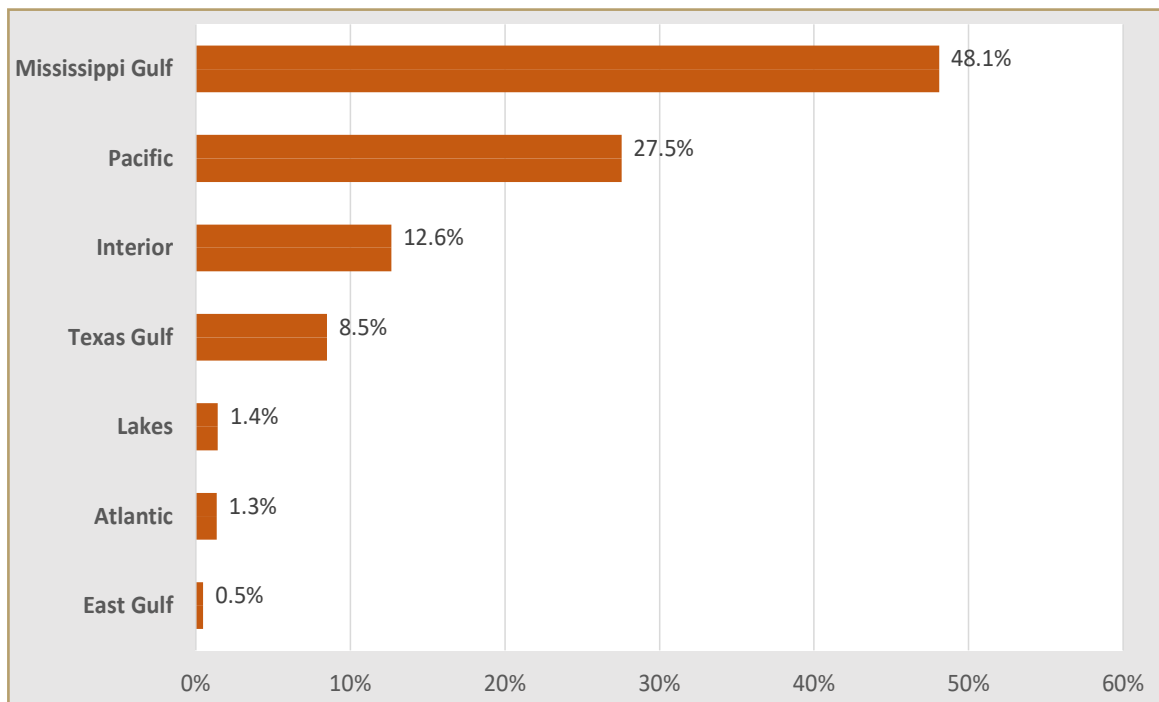
Overview

- U.S. agriculture is expected to contribute \$10.5 billion to the U.S. balance of trade in fiscal year (FY) 2022.¹
- All U.S. exports are forecast to reach \$175.5 billion. Imports are forecast to reach \$165.0 billion in FY 2022.²
- In addition to forestry and fishery products, critical farm inputs (such as fertilizer, feed, and fuel) move on the waterway system.³
- In calendar year 2019, U.S. agricultural exports of \$142 billion generated an additional \$161.4 billion in the U.S. economy and supported 1,102,000 jobs. The farm sector’s share of the income supported by agricultural exports was 25.5 percent.⁴
- In 2019, every \$1 billion of U.S. agricultural exports required approximately 7,784 full-time civilian jobs throughout the economy. U.S. agricultural exports in 2019 required a total of 1,102,000 such jobs.⁵
- In 2020, 166.9 million metric tons (mmt) of agricultural exports and 40.5 mmt of agricultural imports were waterborne.⁶
- Exporters, importers, and domestic shippers depend on maintaining the authorized depths and widths of ports, waterways, locks, and dams.⁷
- The Harbor Maintenance Tax (HMT) was created by the Water Resources Development Act of 1986. HMT is a 0.125 percent ad valorem tax on the value of imports and certain domestic waterborne cargo deposited in the Harbor Maintenance Trust Fund (HMTF) for harbor maintenance and dredging.⁸
- Estimated FY 2019 HMT receipts and investment interest were \$1.8 billion, and congressional appropriations from the HMTF were \$1.5 billion, yielding an estimated year-end balance of \$9.5 billion.⁹
- Commercial vessels engaged in waterborne transportation in the inland waterways system generate revenues and investment interest from a tax on diesel fuel of 29 cents per gallon. The tax is deposited in the Inland Waterways Trust Fund (IWTF) to finance the Federal costs of authorized locks and dams projects.¹⁰
- During FY 2021, the funding for the U.S. Army Corps of Engineers (USACE) was \$7.8 billion, with \$113 million appropriated from IWTF. Congress lowered the required IWTF contribution from 50 percent to 35 percent for construction projects funded from FY 2021 through FY 2031, thereby increasing the general fund share to 65 percent.¹¹

Grain Exports

- Based on the October 2021 estimates for marketing year (MY) 2021/22, the United States is projected to export 22 percent of the grain it produced. This will include 53 percent of wheat, 48 percent of rice, 44 percent of soybeans, and 18 percent of corn.¹²
- The Mississippi River, Texas Gulf, and East Gulf ports accounted for 57 percent of grains inspected and/or weighed for export in calendar year 2020, nearly 81.2 mmt.¹³
- Pacific Northwest (PNW) ports accounted for 28 percent of grains inspected and/or weighed for export in 2020, nearly 39 mmt.¹⁴
- The October 2021 estimates for MY 2021/22 exports include:¹⁵
 - Corn—71.9 mmt
 - Soybeans—58.0 mmt
 - Wheat—23.81 mmt
 - Soybean meal—13.1 mmt
 - Rice—2.9 mmt
 - Soybean oil—0.8 mmt

Grains Inspected and/or weighed for export by region and port area, 2020, by share of total metric tons*



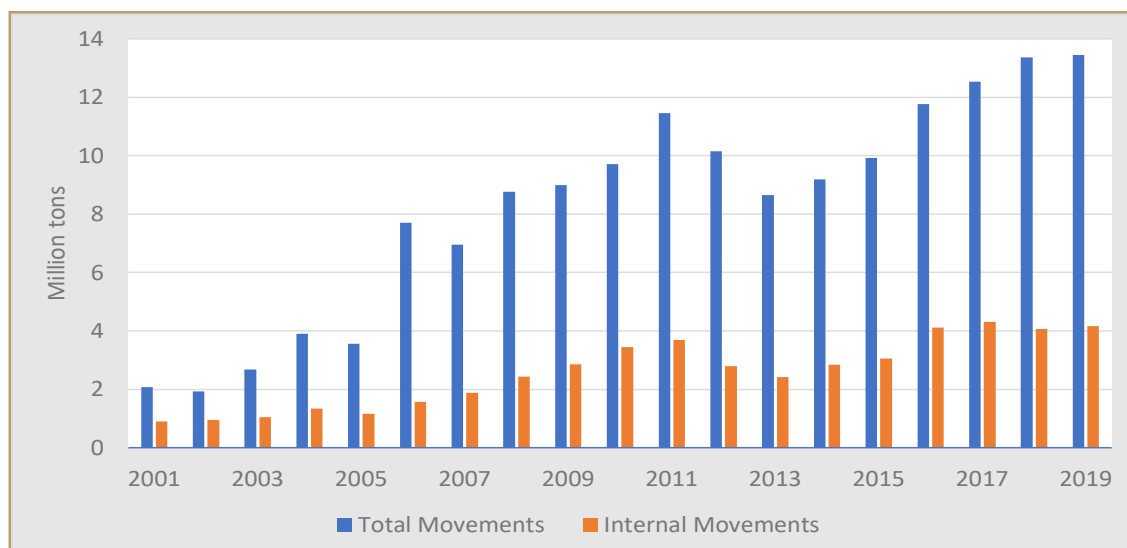
*136.5 million metric tons

Source: USDA, Agricultural Marketing Service.

Ethanol, Corn Production, Fertilizer, and Barge Traffic

- U.S. ethanol operating production at 209 refineries is over 17.4 billion gallons per year.¹⁶
- More than 1.3 billion gallons of ethanol were exported in calendar year 2020.¹⁷
- Major multimodal ethanol terminals include Albany, NY; Baltimore, MD; Chicago, IL; Houston, TX; Linden, Newark, and Sewaren, NJ; Mount Vernon, IN; New Orleans, LA; Sauget, IL; Providence, RI; and Tampa, FL.¹⁸
- About 90 percent of ethanol is transported by train or truck. The remaining 10 percent is mainly transported by barge.¹⁹
- Over 324 million gallons of ethanol were moved by tanker and barge between Petroleum Administration for Defense Districts (PADD) in calendar year 2020, from PADD 2 Midwest to PADD 3 Gulf Coast and from PADD 3 to PADD 1C Lower Atlantic.²⁰
- Barges also move some of the fertilizer needed to grow corn to produce ethanol, as well as some of the distillers' grains, an ethanol byproduct used for animal feed.²¹ A bushel of corn yields 2.7 gallons of ethanol and 17.5 pounds of distillers' grains.²²
- Nearly 11.0 mmt of distillers' grains were exported in calendar year 2020.²³
- USDA estimates an area of 85.1 million corn acres harvested in October 2021 yielded (in MY 2021/22) 176.5 bushels per acre—amounting to 5.2 billion bushels, or 35 percent of the total corn supply. This crop will be converted to ethanol and byproducts including distillers' grains, corn gluten feed, corn gluten meal, and corn oil.²⁴
- Corn is the largest user of nitrogen in terms of application rates per acre, total acres treated, and total applications.²⁵
- In 2019, U.S. waterways carried more than 41.9 million tons (38.0 mmt) of fertilizer movements. Of this total, 16.8 million tons (15.2 mmt) moved by barge through the inland waterways.²⁶

Ethanol movements on the U.S. waterways

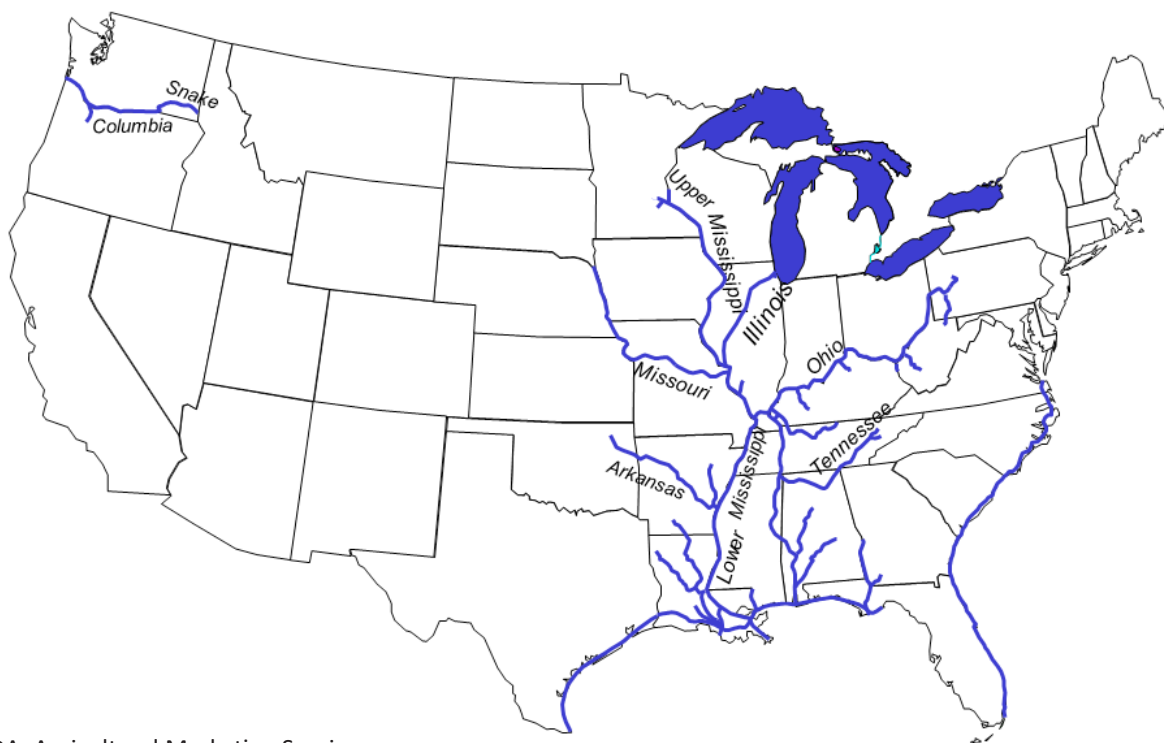


Source: U.S. Census Bureau Trade Data

Barge and Rail Competition

- In calendar year 2020, barges carried over 40 million short tons (36.3 mmt) of corn, wheat, and soybeans downbound through Mississippi Locks 27, Ohio Locks and Dam 52, and Arkansas Lock and Dam 1.²⁷
- In 2020, the U.S. waterways carried 305.2 million tons (276.9 mmt) of food and farm products, including 200.8 million tons (182.2 mmt) of grain and oilseeds.²⁸
- In 2020, a total of 37,611 grain barges were unloaded in the New Orleans port region, showing that an additional 12,227 grain barges entered the river below these locks.²⁹
- Railroads sent 317,564 carloads, approximately 35.2 million short tons (31.9 mmt) of U.S. grain, to ports in 2020.³⁰
- Railroads consider barge rates and the spread between U.S. Gulf and Pacific Northwest ocean vessel freight rates, and price their services accordingly.³¹
- USDA's *Transportation of U.S. Grains, A Modal Share Analysis, 1978-2019 Update* shows that barges moved 49 percent of all grain exports in 2019 and railroads moved 38 percent.³²
- Barges moved 48 percent of corn, 62 percent of soybeans, 28 percent of wheat, and 47 percent of all grains to export grain elevators in 2019.³³
- In 2019, railroads moved 33 percent of corn, 29 percent of soybeans, 60 percent of wheat, and 38 percent of all grains to export locations.³⁴
- Studies have shown that, without barge competition, agricultural shippers pay higher rail transportation costs, the farther they are from an inland waterway.³⁵

Agriculturally significant waterways

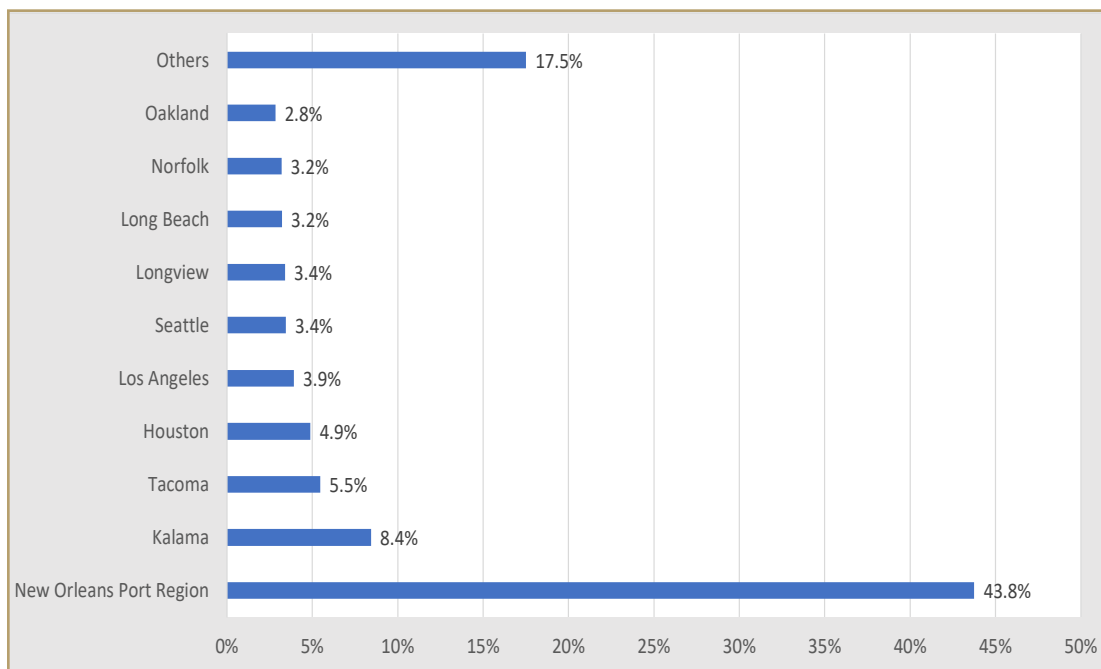


Source: USDA, Agricultural Marketing Service.

Top U.S. Ports for Agricultural Exports

- In calendar year 2020, U.S. bulk and containerized waterborne agricultural exports totaling 166.9 mmt were valued at \$120.0 billion. Of the total exports (39.1 mmt), 23 percent were moved in containers. During the same period, containers were used to transport 7.5 percent of total U.S. waterborne grain exports.³⁶
- In 2020, the top five U.S. bulk agricultural export destination countries were China, Japan, Mexico, Columbia, and Philippines.³⁷
- The top five U.S. ports for bulk and containerized agricultural exports in 2020 were the New Orleans Port Region, LA; Kalama and Tacoma, WA; Houston, TX; and Los Angeles, CA. In terms of containerized exports, the top five ports were Los Angeles, Long Beach, and Oakland, CA; Norfolk, VA; and Tacoma, WA.³⁸

Top U.S. ports for waterborne agricultural exports, 2020

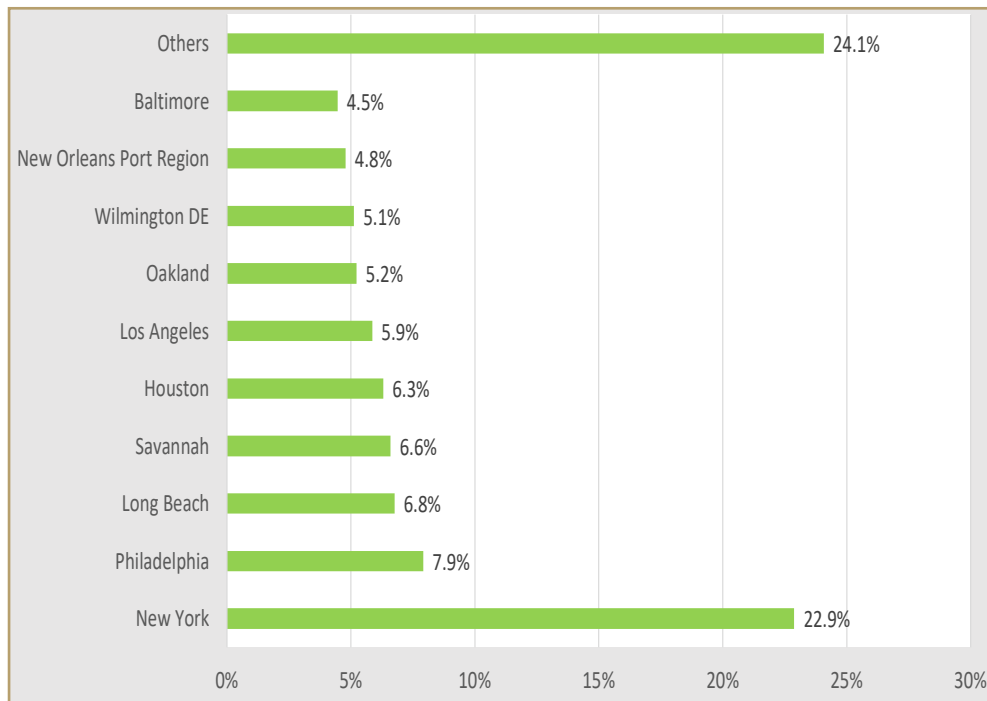


Source: PIERS, formerly known as the Port Import Export Reporting Service.

Top U.S. Ports for Agricultural Imports

- In calendar year 2020, U.S. bulk and containerized waterborne agricultural imports totaled 50.6 mmt valued at \$113.0 billion, of which 80 percent of the total imports (40.5 mmt) were moved in containers.³⁹
- The top five U.S. ports for bulk and containerized agricultural imports in 2020 were New York, NY; Philadelphia, PA; Long Beach, CA; Savannah, GA; and Houston, TX. In terms of containerized imports, the top five ports were New York, NY; Philadelphia, PA; and Long Beach, Los Angeles, and Oakland, CA.⁴⁰

Top U.S. ports for waterborne agricultural imports, 2020



Source: PIERS.

Harbor Channel and Inland Waterway Draft Issues

- Inadequate channel depths and widths due to drought and sedimentation (shoaling) can lead to higher transportation costs, as barges and vessels may be loaded to less than capacity because of low water.⁴¹
- The number of barges in a tow may be reduced to the available channel width, and one-way, or daytime-only traffic restrictions may be imposed.⁴²
- In these cases, more barges and vessels and additional time may be required to ship a given weight of commodities.⁴³
- There have been extended periods in which low river levels, shoaling, and reduced channel widths impeded barged grain movements and access to shallow draft ports.⁴⁴
- At a 9-foot draft, a typical U.S. barge size is 195 feet by 35 feet, which holds up to 1,500 short tons (1,360.8 metric tons (mt)) of cargo;⁴⁵ for each foot of reduced draft, the barge loses about 200 short tons (181.4 mt) of capacity.⁴⁶

- When harbor channels are at less than authorized depths, S-Class container vessels lose 3,840 tons (3,483.6 mt) of cargo capacity per foot;⁴⁷ Panamax bulk grain carriers lose 2,148 tons (1,948.6 mt) per foot;⁴⁸ and the largest Great Lakes vessels lose almost 3,200 tons (2,903.0 mt) per foot.⁴⁹
- The ongoing dredging project led by USACE and the State of Louisiana to deepen the shipping channel from the Gulf of Mexico to Baton Rouge from a depth of 45 feet (13.7 meters) to 50 feet (15.2 meters) aims to reap an average annual benefit of \$96.8 million to the Nation's economy, with a benefit-to-cost ratio of about 5.47 to 1.⁵⁰

Effects of Temporary Closures on Costs, Receipts, and the Federal Budget

- U.S. exporters compete based on world prices.⁵¹
- Temporary closures and restrictions on traffic in harbors and channels can occur because of high water, storm debris, drought, shoaling, groundings, natural disasters, human-made disasters, slowdowns, strikes, and lockouts. These impediments can lead to congestion, delays, spoilage, diversion to other modes and ports, higher transportation costs, reduced farm income, and lost sales.^{52,53,54,55}
- Higher transportation costs can result in lower cash bids in interior markets.⁵⁶
- U.S. exporters may be unable to pass on higher transportation costs, as customers can purchase similar products from other countries.⁵⁷
- In contrast, U.S. importers may be able to pass on higher transportation costs to their customers.^{58,59}
- Users of railroads and highways face congestion, constrained capacity, and driver and equipment shortages.^{60,61,62}
- USACE maintains authorized depths and widths of channels, locks, and dams. This maintenance moderates the effects of congestion, provides resiliency, and enhances recovery after transportation disruptions.⁶³
- USACE works to maintain operable navigation channels through accelerated dredging, rock removal, river training structures to remove sediment, strategic management of water releases from reservoirs, routinely scheduled surveys, and close collaboration with channel users and the U.S. Coast Guard on river conditions.⁶⁴
- Important partners in a reliable waterway system include:
 - U.S. Coast Guard, which provides security, aids to navigation, and implements vessel traffic safety restrictions.⁶⁵
 - National Oceanic and Atmospheric Administration, which provides nautical charts and maps, marine weather and river level information, surveys after disruptions, and marine debris removal.⁶⁶
 - Maritime Administration, which promotes the development and maintenance of an adequate, well-balanced, U.S. merchant marine and marine highways.
 - Saint Lawrence Seaway Development Corporation, which promotes use of the Seaway and maintains and operates the two U.S. Seaway locks and vessel traffic control in areas of the St. Lawrence River and Lake Ontario, in collaboration with its Canadian partner, the St. Lawrence Seaway Management Corporation.
 - Federal Maritime Commission (FMC), which regulates oceanborne transportation to ensure a competitive and reliable international ocean transportation supply system that supports the U.S. economy. FMC also protects the public from unfair and deceptive practices.

Want To Know More? Try These Publications:

STUDIES, STATEMENTS, LEGISLATION, AND REPORTS ON MODAL SHARE, COMPETITION, AND MULTIMODAL INFRASTRUCTURE INVESTMENT

Chang, K.L., P.A. Caffarelli, J. Gastelle, and A. Taylor. May 18, 2017. "Inland Ports Help Reduce Traffic Congestion," *Grain Transportation Report*, USDA, Agricultural Marketing Service.

<https://www.ams.usda.gov/sites/default/files/media/GTR051817.pdf#page=2>

Chang, K.L., April 22, 2021. "Importance of Navigation on the Upper Mississippi River System to the Grain Industry. USDA, Agricultural Marketing Service," *Grain Transportation Report*. USDA, Agricultural Marketing Service.

<https://www.ams.usda.gov/sites/default/files/media/GTR04222021.pdf#page=2>

Chang, K.L., June 17, 2021. "The Water Resources Development Act and Appropriations for the U.S. Waterways Commercial Navigation System," *Grain Transportation Report*. USDA, Agricultural Marketing Service.

<https://www.ams.usda.gov/sites/default/files/media/GTR06172021.pdf#page=2>

Chang, K.L., P.A. Caffarelli, and J. Gastelle. October 2021. *Transportation of U.S. Grains: A Modal Share Analysis*, USDA, Agricultural Marketing Service.

https://www.ams.usda.gov/sites/default/files/media/TransportationofUSGrainsModalShare1978_2019.pdf

Federal Maritime Commission. July 2015. *U.S. Container Port Congestion and Related International Supply Chain Issues: Causes, Consequences and Challenges*. https://www.fmc.gov/assets/1/Page/PortForumReport_FINALwebAll.pdf

Federal Register. September 2021. *America's Supply Chains and the Transportation Industrial Base*. National Archives.

<https://www.federalregister.gov/documents/2021/09/16/2021-19974/americas-supply-chains-and-the-transportation-industrial-base>

GAO. July 26, 2017. *Inland Harbors: The Corps of Engineers Should Assess Existing Capabilities to Better Inform Dredging Decisions*, GAO-17- 635, Government Accountability Office (GAO). <https://www.gao.gov/assets/690/686127.pdf>

Informa Economics. May 2018. *Impact on Crops and Product Export Flows of Dredging the Lower Mississippi River to 50 Feet*. (Prepared for Soy Transportation Coalition.)

<http://www.soytransportation.org/newsroom/STCLowerMississippiRiver50-FootDraftStudy.pdf>

Inland Waterways Trust Fund. February 2018. IF 10020. Congressional Research Service.

<https://crsreports.congress.gov/product/details?prodcode=IF10020>

Institute for Water Resources. "Value to the Nation." U.S. Army Corps of Engineers. Last Retrieved. December 1, 2021.

<https://www.iwr.usace.army.mil/Missions/Value-to-the-Nation/Navigation/>

Martin Associates. July 2018. *Economic Impacts of Maritime Shipping in the Great Lakes-St. Lawrence Region*.

https://greatlakes-seaway.com/wp-content/uploads/2019/10/eco_impact_full.pdf

NASDA. September 2016. Agriculture Infrastructure. NASDA Policy Statement. 10.1. Agricultural Transportation. National Association of State Departments of Agriculture (NASDA).

<https://www.nasda.org/policy/nasda-policy-statements/agriculture-infrastructure#agriculture-transportation>

Salin, D. September 2018. *Brazil Soybean Transportation* (quarterly), USDA, Agricultural Marketing Service.

<https://www.ams.usda.gov/sites/default/files/media/Brazil2ndQuarter2018.pdf>

Salin, D. February 2020. *United States–South America Ocean Grain Freight Spreads* (Summary), USDA, Agricultural Marketing Service.

<https://www.ams.usda.gov/sites/default/files/media/OceanGrainFreightSpreadsUpdate.pdf>

Salin, D. August 2021. *Soybean Transportation Guide: Brazil 2020*, USDA, Agricultural Marketing Service.
<https://www.ams.usda.gov/sites/default/files/media/BrazilSoybeanTransportationGuide2020.pdf>

Salin, D. November 2021. *Brazil Soybean Transportation* (quarterly), USDA, Agricultural Marketing Service.
https://www.ams.usda.gov/sites/default/files/media/Brazil_Quarter3_2021.pdf

Soy Transportation Coalition. November 30, 2021. *Top 10 Most Wanted List of Infrastructure Priorities*. Transportation and Infrastructure. Last retrieved.
<https://soygrowers.com/news-releases/soy-transportation-coalition-releases-top-10-wanted-list-infrastructure-priorities/>

Specialist in Transportation Policy. December 21, 2017. *Federal Freight Policy: In Brief*. Congressional Research Service. R44367.
https://www.everycrsreport.com/files/20171221_R44367_b51e2043595f5b0f21b1858aa2aa3ecb10d9b435.pdf

Texas A&M Transportation Institute. April 2018. *Predictable Funding for Locks and Dams*. (Prepared for Soy Transportation Coalition.)
http://www.soytransportation.org/newsroom/PredictableFundingForLocksAndDams_FinalReport-4-16-18.pdf

Transportation Research Board. Special Report 315. *Funding and Managing the U.S. Inland Waterways System: What Policymakers Need to Know*. <http://www.trb.org/Main/Blurbs/172741.aspx>

U.S. Army Corps of Engineers. February 27, 2017. *U.S. Army Corps of Engineers: Water Resource Authorizations, Appropriations, and Activities*. R41243.
<https://www.google.com/search?q=Army+Corps+of+Engineers%3A+Water+Resource+Authorizations%2C+Appropriations%2C+and+Activities>

U.S. Army Corps of Engineers. April 2018. *Mississippi River Ship Channel, Gulf to Baton Rouge, LA. Integrated General Reevaluation Report And Supplemental Environmental Impact Statement*. Mississippi Valley Division. New Orleans District. Final Report Update.
<https://hdl.handle.net/11681/34635>

U.S. Army Corps of Engineers. December 2020. *Capital Investment Strategy (CIS) of 2020*.
<https://www.iwr.usace.army.mil/Portals/70/docs/IWUB/Inland%20Waterways%20Capital%20Investment%20Strategy%20Report%202020%20Final%20Transmitted%20to%20Congress%204Jan21.pdf?ver=zAvoCiOFncpHG9WgP4JU2g%3d%3d>

U.S. Army Corps of Engineers. December 2020. Investment Program Action Team. Five-Year Review and Update of the Inland and Intracoastal Waterways Twenty-Year Capital Investment Strategy.
<https://www.iwr.usace.army.mil/Portals/70/docs/IWUB/Inland%20Waterways%20Capital%20Investment%20Strategy%20Report%202020%20Final%20Transmitted%20to%20Congress%204Jan21.pdf?ver=zAvoCiOFncpHG9WgP4JU2g%3d%3d>

University of Arkansas, December 2021. *A Modal Comparison of Domestic Freight Transportation Effects on The General Public: 2001–2019*. https://martrec.uark.edu/research/completedprojects/tti_modal_final_acc.pdf

USDA, Office of the Chief Economist. July 2021. *America's Farmers: Resilient Throughout the COVID Pandemic*.
<https://www.usda.gov/media/blog/2020/09/24/americas-farmers-resilient-throughout-covid-pandemic>

USDA, Agriculture Agricultural Marketing Service. Continually updated. *Agricultural Transportation Open Data Platform*.
<https://agtransport.usda.gov/>

USDOT. January 2017. *Beyond Traffic: 2045 Final Report*. System Implications. Marine. pp. 172-176. U.S. Department of Transportation.
https://www.transportation.gov/sites/dot.gov/files/docs/BeyondTraffic_tagged_508_final.pdf

USDOT. March 30, 2021. Port Performance Freight Statistics Program. U.S. Department of Transportation, Bureau of Transportation Statistics. <https://www.bts.gov/ports>

White House (The). February 12, 2018. *Legislative Outline for Rebuilding Infrastructure in America*. <https://www.transportation.gov/briefing-room/legislative-outline-rebuilding-infrastructure-america>

DISRUPTIONS TO NAVIGATION AND TEMPORARY CLOSURES

Caffarelli, P. and A. Sparger. November 2017. *Analysis of Grain Basis Behavior During Transportation Disruptions* (report summary), USDA, Agricultural Marketing Service. <http://dx.doi.org/10.9752/TS215.11-2017>

Inland and Intracoastal Waterways: Primer and Issues for Congress. July 2020. Congressional Research Service. <https://crsreports.congress.gov/product/pdf/IF/IF11593>

Kelly, N. December 2019. “Barge Traffic Disruptions and Their Effects on Shipping Costs in Agricultural Freight Corridors,” *Grain Transportation Report*, USDA, Agricultural Marketing Service. <https://www.ams.usda.gov/sites/default/files/media/BargeTrafficDisruptions.pdf>

Kelly, N. December 2019. “River Transportation and the Broiler Industry in North Alabama: A Descriptive Analysis,” *Grain Transportation Report*. USDA, Agricultural Marketing Service. <https://www.ams.usda.gov/sites/default/files/media/RiverTransportationinNorthAlabama.pdf>

Marathon, N. and M. Chang. October 5, 2017. “Low Water Impacts on Barge Navigation,” *Grain Transportation Report*, USDA, Agricultural Marketing Service. <https://www.ams.usda.gov/sites/default/files/media/GTR100517.pdf#page=2>

Marathon, N. and M. Chang. March 15, 2018. “Flooding Disrupts Barge Traffic and Raises Rates,” *Grain Transportation Report*, USDA, Agricultural Marketing Service. <http://dx.doi.org/10.9752/TS056.03-15-2018>

U.S. Army Corps of Engineers. Waterborne Commerce of the United States (WCUS) Ports and Waterways Web Tool. U.S. Army Corps of Engineers, Waterborne Commerce Statistics Center. <http://cwbi-ndc-nav.s3-website-us-east-1.amazonaws.com/files/wcsc/webpub/#/>

USDOT. October 2017. The Impacts of Unscheduled Lock Outages. Submitted to the National Waterways Foundation and the U.S. Department of Transportation’s Maritime Administration by the Center for Transportation Research, the University of Tennessee and Vanderbilt Engineering Center for Transportation and Operational Resiliency, Vanderbilt University. https://www.marad.dot.gov/wp-content/uploads/pdf/low-res-Lock-Outage-NWF_FINAL_REPORT-2017-002.pdf

U.S. Department of Homeland Security. May 2020. Identifying Critical Infrastructure During COVID-19. Washington, DC: U.S. Department of Homeland Security, Cybersecurity and Infrastructure Security Agency. <https://www.cisa.gov/identifying-critical-infrastructure-during-covid-19>.

Walters, L., T. Wade, and S. Suttles. 2020. Food and Agricultural Transportation Challenges Amid the COVID-19 Pandemic. *Choices* 35(3). Agricultural & Applied Economics Association. https://www.choicesmagazine.org/UserFiles/file/cmsarticle_752.pdf

Washington Council on International Trade. February 22, 2016. *The Economic Costs of the 2014-2015 West Coast Port Slowdown on Washington State*. <https://wsfb.com/wp-content/uploads/2016/04/WCIT-Port-Delay-Economic-Impact-Report.pdf>

Yu, T.E, B.C. English and R.J. Menard. September 2016. *Economic Impacts Analysis of Inland Waterway Disruption on the Transport of Corn and Soybeans*, Staff Report #AE16-08, University of Tennessee, Department of Agricultural and

Endnotes

NOTE:

Consistent with established practices, this report only considers those trade actions which are in place or have had formal announcement of effective dates as of the time of publication of the monthly [World Agricultural Supply and Demand Estimates](#) on October 12, 2021 and the quarterly [Outlook for U.S. Agricultural Trade](#) on November 23, 2021. Further, unless a formal end date is specified, this report also assumes such actions are in place throughout the time period covered by these forecasts.

¹ Kenner, B., J. Hui, and D. Russell. November 23, 2021. Outlook for U.S. Agricultural Trade, AES-118. USDA, Economic Research Service and USDA, Foreign Agricultural Service.
<https://www.ers.usda.gov/publications/pub-details/?pubid=102734>

² Ibid.

³ U.S. Army Corps of Engineers, Navigation Data Center, Waterborne Commerce Statistics Center.
<https://www.iwr.usace.army.mil/about/technical-centers/wcsc-waterborne-commerce-statistics-center/>

⁴ USDA/ERS Agricultural Trade Multiplier/2019 Data Overview. August 5, 2021.
<https://www.ers.usda.gov/data-products/agricultural-trade-multipliers/2019-data-overview/>

⁵ Ibid.

⁶ PIERS <https://ihsmarkit.com/products/piers.html>, a brand name of a service formerly known as the Port Import Export Reporting Service.

⁷ *Study of Rural Transportation Issues*, Chapter 12: Barge Transportation (pdf) and Chapter 14: Ocean Transportation (pdf). USDA and U.S. Department of Transportation, April 2010.
<https://www.ams.usda.gov/services/transportation-analysis/rti>

⁸ Corps of Engineers—Civil Works, Appendix, The Budget for Fiscal Year 2022. The White House, May 28, 2021.
<https://www.govinfo.gov/app/collection/budget/2022>

⁹ Ibid.; *Full Utilization of The Harbor Maintenance Trust Fund Act*. 116 Congress, House of Representatives, Rept.116-136. Part 1. July 2, 2019. <https://www.congress.gov/116/crpt/hrpt136/CRPT-116hrpt136.pdf>

¹⁰ U.S. Corps of Engineers—Civil Works. Fiscal Year 2021- Budget of the U.S. Government. The White House. February 10, 2020. <https://www.govinfo.gov/content/pkg/BUDGET-2021-BUD/pdf/BUDGET-2021-BUD-22.pdf>

¹¹ U.S. Army Corps of Engineers: FY2021 Appropriations, Congressional Research Service, IF11462, March 24, 2021.
<https://crsreports.congress.gov/product/pdf/IF/IF11462/5>

¹² U.S. Army Corps of Engineers: FY2021 Appropriations, Congressional Research Service, IF11462, March 24, 2021.
<https://crsreports.congress.gov/product/pdf/IF/IF11462/5>

¹³ *World Agricultural Supply and Demand Estimates (WASDE)* – 617. USDA, Office of the Chief Economist, Agricultural Marketing Service, Farm Service Agency, Economic Research Service, and Foreign Agricultural Service, October 12, 2021. <https://www.usda.gov/oce/commodity/wasde/wasde1021.pdf>

¹⁴ Ibid.

¹⁵ *World Agricultural Supply and Demand Estimates, WASDE* – 617. U.S. Dept. of Agriculture, Office of the Chief Economist, Agricultural Marketing Service, Farm Service Agency, Economic Research Service, and Foreign Agricultural Service, October 12, 2021. <https://www.usda.gov/oce/commodity/wasde/wasde1021.pdf>

¹⁶ *Ethanol Biorefinery Locations*. November 3, 2021. Renewable Fuels Association. <https://ethanolrfa.org/ethanol-101/where-is-ethanol-made>

¹⁷ U.S. Census Bureau Trade Data compiled on the Global Agricultural Trade System by the USDA, Foreign Agricultural Service. <https://apps.fas.usda.gov/gats/default.aspx>

¹⁸ *OPIS/STALSBY Petroleum Terminal Encyclopedia*, 2018 edition. Oil Price Information Service. <https://www.opisnet.com/product/directories/opisstalsby-petroleum-terminal-encyclopedia/>

¹⁹ *Ethanol Production and Distribution*. U.S. Dept. of Energy, Alternative Fuels Data Center. https://www.afdc.energy.gov/fuels/ethanol_production.html

²⁰ Table 59: Movements of Crude Oil and Petroleum Products by Tanker and Barge Between PAD Districts. Petroleum Supply Monthly. U.S. Energy Information Administration. <https://www.eia.gov/petroleum/supply/monthly/>

²¹ U.S. Army Corps of Engineers. Navigation Data Center. Waterborne Commerce Statistics Center. <https://www.iwr.usace.army.mil/about/technical-centers/wcsc-waterborne-commerce-statistics-center/>

²² *Biofuels Data Sources, Conversion Factors*, USDA, Economic Research Service, January 5, 2018. <https://www.ers.usda.gov/about-ers/partnerships/strengthening-statistics-through-the-icars/biofuels-data-sources/>

²³ U.S. Census Bureau Trade Data compiled on the Global Agricultural Trade System by the USDA, Foreign Agricultural Service. <https://apps.fas.usda.gov/gats/default.aspx>

²⁴ *World Agricultural Supply and Demand Estimates, WASDE* – 581. USDA, Office of the Chief Economist, Agricultural Marketing Service, Farm Service Agency, Economic Research Service, Foreign Agricultural Service, October 12, 2021. <https://www.usda.gov/oce/commodity/wasde/wasde0918.pdf>.

²⁵ Ribaldo, Marc, Michael Livingston, and James Williamson. Nitrogen Management on U.S. Corn Acres, 2001-10, EB-20. USDA, Economic Research Service, November 2012. https://www.ers.usda.gov/webdocs/publications/42865/33561_eb20.pdf?v=41228

²⁶ U.S. Army Corps of Engineers. Navigation Data Center. Waterborne Commerce Statistics Center. <https://www.iwr.usace.army.mil/About/Technical-Centers/WCSC-Waterborne-Commerce-Statistics-Center-2/>

²⁷ Lock Performance Monitoring System, Tonnage Report. U.S. Army Corps of Engineers. Web. <http://corpslocks.usace.army.mil/lpwb/f?p=121:1:0>. Mississippi River Locks 27, also known as Chain of Rocks Locks, Granite City, IL, is the last lock for downbound barges on the Mississippi River. For purposes of measuring downbound tonnages on the Ohio River, the U.S. Army Corps of Engineers collects data at Locks and Dam 52, Brookport, IL, because it is strategically located on the Ohio River near the junction of the Tennessee and Cumberland Rivers. Locks and Dam 53, Grand Chain, IL, is technically the last lock on the Ohio River. Arkansas River Lock and Dam 1, also known as Norrell Lock, Tichnor, AR, is the last lock on the Arkansas River, but traffic must use the White River to connect with the Mississippi River. On the White River, Montgomery Point Lock and Dam, near Tichnor, AR, is used only during low water conditions.

²⁸ U.S. Army Corps of Engineers. Navigation Data Center. Waterborne Commerce Statistics Center. <https://www.iwr.usace.army.mil/About/Technical-Centers/WCSC-Waterborne-Commerce-Statistics-Center-2/>

²⁹ U.S. Dept. of Agriculture, Agricultural Marketing Service. *Grain Transportation Report*. Figure 12. Grain Barges for Export in New Orleans Region. <https://www.ams.usda.gov/services/transportation-analysis/gtr>

³⁰ U.S. Dept. of Agriculture, Agricultural Marketing Service. *Grain Transportation Report*. Table 3. Rail Deliveries to Port (carloads). April 26, 2018. <https://www.ams.usda.gov/services/transportation-analysis/gtr>

³¹ *Study of Rural Transportation Issues*, Chapter 6: Rail Competition and its Importance to Agriculture (pdf). U.S. Dept. of Agriculture and U.S. Dept. of Transportation, April 2010. <https://www.ams.usda.gov/services/transportation-analysis/rti>

³² Chang, Kuo-Liang “Matt”, Peter Caffarelli, Gastelle, Jesse Gastelle. *Transportation of U.S. Grains: A Modal Share Analysis*, October 2019. U.S. Dept. of Agriculture, Agricultural Marketing Service. https://www.ams.usda.gov/sites/default/files/media/TransportationofUSGrainsModalShare1978_2019.pdf

³³ Ibid.

³⁴ Ibid.

³⁵ *Study of Rural Transportation Issues*, Chapter 6: Rail Competition and its Importance to Agriculture (pdf). U.S. Dept. of Agriculture and U.S. Dept. of Transportation, April 2010. <https://www.ams.usda.gov/services/transportation-analysis/rti>

³⁶ Calculated by USDA using data obtained from PIERS <https://ihsmarkit.com/products/piers.html>, a brand name of a service formerly known as the Port Import Export Reporting Service.

³⁷ Ibid.

³⁸ Ibid.

³⁹ Ibid.

⁴⁰ Ibid.

⁴¹ Marathon, Nick and Kuo-Liang “Matt” Chang. *Low Water Impacts on Barge Navigation*. U.S. Dept. of Agriculture, Agricultural Marketing Service. *Grain Transportation Report*. October 5, 2017. <https://www.ams.usda.gov/sites/default/files/media/GTR100517.pdf#page=2>

⁴² Ibid.

⁴³ Ibid.

⁴⁴ Inland Harbors: The Corps of Engineers Should Assess Existing Capabilities to Better Inform Dredging Decisions. GAO-17-635. Government Accountability Office. July 26, 2017. <https://www.gao.gov/assets/690/686127.pdf>

⁴⁵ Study of Rural Transportation Issues, U.S. Department of Agriculture. Agricultural Marketing Services. A report in response to Section 6206 of the Food, Conservation, and Energy Act of 2008. Chapter 12. April. 2010. <https://www.ams.usda.gov/sites/default/files/media/RTIReportChapter12.pdf>

⁴⁶ Draft Table, Cargo In Short Tons. FMT Dry Cargo. October 14, 2014. <http://fmtdrycargo.com/wp-content/uploads/2015/07/B0207-212.pdf>

⁴⁷ America's Ports and Intermodal Transportation System. U.S. Dept. of Transportation, Maritime Administration. January 2009. <http://www.glmri.org/downloads/Ports&IntermodalTransport.pdf>

⁴⁸ Ibid.

⁴⁹ Dredging Crisis. Lake Carriers' Association. News and Issues. Position Papers. January 11, 2018. <http://www.lcaships.com/category/position-papers/>

⁵⁰ 50-foot dredging depth proposed for parts of lower Mississippi River. NOLA.com. Latest update: July 2021.

⁵¹ USDA Agricultural Projections to 2027. U.S. Dept. of Agriculture. Office of the Chief Economist, World Agricultural Outlook Board. Prepared by the Interagency Agricultural Projections Committee. Long-term Projections Report OCE-2018-1, 117 pp. February 2018. <https://www.ers.usda.gov/publications/pub-details/?pubid=87458>

⁵² Caffarelli, Peter and Adam Sparger, Analysis of Grain Basis Behavior during Transportation Disruptions (Summary), U.S. Department of Agriculture, Agricultural Marketing Service, November 2017. <https://www.ams.usda.gov/sites/default/files/media/AnalysisofGrainBasisBehaviorTransportationDisruptionsSummary.pdf>

⁵³ Marathon, Nick and Kuo-Liang "Matt" Chang. Flooding Disrupts Barge Traffic and Raises Rates. U.S. Dept. of Agriculture, Agricultural Marketing Service. Grain Transportation Report. March 15, 2018. <http://dx.doi.org/10.9752/TS056.03-15-2018>

⁵⁴ "Effects on Agriculture of a Closure of West Coast Port Facilities," United States District Court for the Northern District of California, San Francisco Headquarters, United States of America, Plaintiff, v. Pacific Maritime Association, and International Longshore and Warehouse Union, Defendants, Declaration of Ann M. Veneman, Secretary of Agriculture, October 7, 2002.

⁵⁵ Did the West Coast Port Dispute Contribute to the First-Quarter GDP Slowdown? Amiti, Mary, Tyler Bodine-Smith, Michele Cavallo, and Logan Lewis. Federal Reserve Bank of New York. Liberty Street Economics. IFDP Notes. July 2, 2015. <http://libertystreeteconomics.newyorkfed.org/2015/07/did-the-west-coast-port-dispute-contribute-to-the-first-quarter-gdp-slowdown.html>

⁵⁶ Caffarelli, Peter and Adam Sparger, Analysis of Grain Basis Behavior during Transportation Disruptions (Summary), U.S. Dept. of Agriculture, Agricultural Marketing Service, November 2017. <http://dx.doi.org/10.9752/TS215.11-2017>

⁵⁷ Caffarelli, Peter and Adam Sparger, Recent Grain Disappearance Suggests Increased Demand for Truck Transportation, U.S. Dept. of Agriculture, Agricultural Marketing Service, Grain Transportation Report. February 1, 2018. <http://dx.doi.org/10.9752/TS056.02-01-2018>

⁵⁸ Rehkamp, Sarah and Patrick Canning. Accounting for Direct and Embedded Imports in the U.S. Food and Beverage Dollar. U.S. Dept. of Agriculture, Economic Research Service. Amber Waves. July 6, 2015.
<https://www.ers.usda.gov/amber-waves/2015/july/accounting-for-direct-and-embedded-imports-in-the-us-food-and-beverage-dollar/>

⁵⁹ U.S. Department of Transportation. Beyond Traffic: 2045 Final Report. January 2017.
https://www.transportation.gov/sites/dot.gov/files/docs/BeyondTraffic_tagged_508_final.pdf

⁶⁰ U.S. Army Corps of Engineers, Missions, Civil Works, Navigation. <http://www.usace.army.mil/Missions/Civil-Works/Navigation/>

⁶¹ Ibid.

⁶² U.S. Coast Guard, Missions, Marine Transportation System Management Program.
<https://www.dco.uscg.mil/Our-Organization/Assistant-Commandant-for-Prevention-Policy-CG-5P/Marine-Transportation-Systems-CG-5PW/>

⁶³ U.S. Dept. of Commerce, National Oceanic and Atmospheric Administration, About Our Agency.
<http://www.noaa.gov/about-our-agency>

⁶⁴ U.S. Dept. of Transportation. Maritime Administration. About Us. <https://www.marad.dot.gov/about-us/>

⁶⁵ U.S. Dept. of Transportation, Saint Lawrence Seaway Development Corporation, About Us.
<https://www.seaway.dot.gov/about/what-does-slsdc-do/>

⁶⁶ Federal Maritime Commission. About the Federal Maritime Commission.
https://www.fmc.gov/about/about_fmc.aspx

PREFERRED CITATION

Chang, Kuo-Liang. *A Reliable Waterway System Is Important to Agriculture*. February 2022. U.S. Dept. of Agriculture, Agricultural Marketing Service. Web. <<http://dx.doi.org/10.9752/TS050.02-2022>>

Photo credits: USDA

USDA is an equal opportunity provider, employer, and lender.