



AgEcon SEARCH
RESEARCH IN AGRICULTURAL & APPLIED ECONOMICS

The World's Largest Open Access Agricultural & Applied Economics Digital Library

This document is discoverable and free to researchers across the globe due to the work of AgEcon Search.

Help ensure our sustainability.

Give to AgEcon Search

AgEcon Search
<http://ageconsearch.umn.edu>
aesearch@umn.edu

*Papers downloaded from **AgEcon Search** may be used for non-commercial purposes and personal study only. No other use, including posting to another Internet site, is permitted without permission from the copyright owner (not AgEcon Search), or as allowed under the provisions of Fair Use, U.S. Copyright Act, Title 17 U.S.C.*

United States
Department of
Agriculture



Center for Nutrition
Policy and Promotion

Miscellaneous
Publication
Number 1528-2008

Expenditures on Children by Families, 2008



**Lino, Mark & Carlson, Andrea. (2009). *Expenditures on Children by Families, 2008*.
U.S. Department of Agriculture, Center for Nutrition Policy and Promotion.
Miscellaneous Publication No. 1528-2008.**

Abstract

Since 1960, the U.S. Department of Agriculture has provided estimates of expenditures on children from birth through age 17. This technical report presents the most recent estimates for husband-wife and single-parent families using data from the 2005-06 Consumer Expenditure Survey, updated to 2008 dollars using the Consumer Price Index. Data and methods used in calculating annual child-rearing expenses are described. Estimates are provided for major components of the budget by age of child, family income, and region of residence. For the overall United States, annual child-rearing expense estimates ranged between \$11,610 and \$13,480 for a child in a two-child, married-couple family in the middle-income group. Adjustment factors for number of children in the household are also provided. Results of this study should be of use in developing State child support and foster care guidelines, as well as in family educational programs.

The publication appears on our Web site at www.cnpp.usda.gov.

The U.S. Department of Agriculture (USDA) prohibits discrimination in all its programs and activities on the basis of race, color, national origin, age, disability and where applicable, sex, marital status, familial status, parental status, religion, sexual orientation, genetic information, political beliefs, reprisal, or because all or part of an individual's income is derived from any public assistance program. (Not all prohibited bases apply to all programs.) Persons with disabilities who require alternative means for communication of program information (Braille, large print, audiotape, etc.) should contact USDA's TARGET Center at (202) 720-2600 (voice and TDD). To file a complaint of discrimination, write to USDA, Director, Office of Civil Rights, 1400 Independence Avenue, S.W., Washington, D.C. 20250-9410, or call (800) 795-3272 (voice) or (202) 720-6382 (TDD). USDA is an equal opportunity provider and employer.

July 2009

Expenditures on Children by Families, 2008

Mark Lino, PhD
Andrea Carlson, PhD

U.S. Department of Agriculture
Center for Nutrition Policy and Promotion

Miscellaneous Publication
Number 1528-2008

July 2009

Table of Contents

	Page no.
Executive Summary	iii
Expenditures on Children by Families, 2008	1
Estimating and Allocating Expenditures on Children	1
Data Used	1
Determining Food, Transportation, Health Care, Clothing, Child Care and Education, and Miscellaneous Expenses on Children	4
Determining Housing Expenses on Children	9
Results	10
Husband-Wife Families	10
Single-Parent Families	14
Adjustments for Older Children and Household Size	15
Alternative Estimates of Expenditures on Children	18
Estimating Future Costs	20
Expenditures Not Included	22
References	24

Expenditures on Children by Families, 2008

Executive Summary

Since 1960, the U.S. Department of Agriculture (USDA) has provided estimates of annual expenditures on children from birth through age 17. This technical report presents the 2008 estimates for husband-wife and single-parent families. Results are shown in tables 1-7 at the end of this report. Expenditures are provided by age of children, household income level, major budgetary component (housing, food, etc.), and region (for husband-wife families).

Methods

Data used to estimate expenditures on children are from the 2005-06 Consumer Expenditure Survey—Interview portion (CE). Administered by the U.S. Census Bureau, U.S. Department of Commerce, under contract with the Bureau of Labor Statistics (BLS), U.S. Department of Labor, this survey is the most comprehensive source of information on household expenditures available at the national level. The sample consisted of 11,800 husband-wife households and 3,350 single-parent households and was weighted to reflect the U.S. population of interest by using BLS weighting methods.

The CE collects overall household expenditure data for some budgetary components (housing, food, transportation, health care, and miscellaneous goods and services) and child-specific expenditure data for other components (clothing, child care, and education). Child-specific expenses were allocated directly to children. Food and health care expenses were allocated to children based on findings from Federal surveys on children's budget shares. Family-related transportation expenses and miscellaneous expenses were allocated by using a per capita method. This method is preferable over a marginal cost method that measures child-rearing expenditures as the difference in expenses between equivalent couples with and without children. The average cost of an additional bedroom approach was used to estimate housing expenses on a child.

Although based on the 2005-06 CE, the expense estimates were updated to 2008 dollars by using the Consumer Price Index (CPI) for specific budgetary components: 2005 expenditure and income data were first converted to 2006 dollars to complete the analysis and then the results were updated to 2008 dollars.

Selected Results

- Child-rearing expenses vary considerably by household income level. For a child in a two-child, husband-wife family, annual expenses ranged from \$8,330 to \$9,450, on average, (depending on age of the child) for households with before-tax income less than \$56,870, from \$11,610 to \$13,480 for households with before-tax income between \$56,870 and \$98,470, and from \$19,250 to \$22,960 for households with before-tax income more than \$98,470.
- As a proportion of total child-rearing expenses, housing accounted for the largest share across income groups, comprising 32 to 35 percent of total expenses on a child in a two-child, husband-wife family. For families in the middle-income group, food and child care/education (for those with the expense) were the next largest average expenditures on a child, each accounting for 16 percent of child-rearing expenses.
- Annual expenditures on children generally increased with age of the child. This fact was the same for both husband-wife and single-parent families.
- Overall annual child-rearing expenses were highest for husband-wife families in the urban Northeast, followed by families in the urban West and urban Midwest; families in the urban South and rural areas had the lowest child-rearing expenses.
- Compared with expenditures on each child in a two-child, husband-wife family, expenditures by husband-wife households with one child average 25 percent more on the single child and expenditures by households with three or more children average 22 percent less on each child.
- Child-rearing expense patterns of single-parent households with a before-tax income less than \$56,870 were 7 percent lower than those of husband-wife households in the same income group. Most single-parent households were in this income group (compared with about one-third of husband-wife families).

Other Expenditures on Children

Expenditures for major budgetary components estimated in this study consisted of direct parental expenses made on children through age 17. These expenditures exclude college costs and other parental expenses on children after age 17. In addition, expenditures on children made by people outside the household and by the government are not included. Indirect costs involved in child rearing by parents (time costs and foregone earnings and career opportunities) are also not included in the estimates.

Expenditures on Children by Families, 2008

The U.S. Department of Agriculture (USDA) has provided estimates of expenditures on children from birth through age 17 since 1960. These estimates may be used in developing State child support guidelines and foster care payments, as well as in family education programs. This report presents 2008 estimated child-rearing expenses by husband-wife and single-parent families. The figures for 2008 are shown in tables 1-7 at the end of this report. The 2008 USDA estimates are not directly comparable to previous estimates (U.S. Department of Agriculture, 1981; Lino, 2008) because of changes in methods.

For husband-wife families, child-rearing expenses are for three income groups and for single-parent families, two income groups. To adjust partially for price differentials and varying patterns of expenditures, USDA also provides estimates for husband-wife families in various regions, as well as the United States overall. For single-parent families, estimates are provided only for the United States overall because of limitations in sample size. For all families, expenditures on children are estimated for the major budgetary components: Housing, food, transportation, clothing, health care, child care and education, and miscellaneous goods and services (entertainment, personal care items, etc.).

This report presents the USDA methodology for deriving expenditures on children and the results. First, data used in determining child-rearing expenditures will be described. These data contain overall household expenditures for some budgetary components and child-specific expenditures for other components. Overall household expenditures must be allocated among family members to determine expenses on children. Second, the allocation methods used by USDA will be explained, along with general estimation techniques. Third, an overview of the results will be given. Fourth, how the USDA estimates on child-rearing expenses compare with the results of alternative methodologies on estimating child-rearing expenses will be discussed. The report ends with an explanation of how future child-rearing expenses may be determined and a discussion on other expenses on children not included in this report.

Estimating and Allocating Expenditures on Children

Data Used

Since 1960, the first year USDA produced child-rearing expense estimates, the Consumer Expenditure Survey (CE) has been used as the basis for the estimates. The CE is also used in alternative methodologies on estimating child-rearing expenses. CE data are the most comprehensive source of information on household expenditures available at the national level, containing expenditure data for housing, food, transportation, clothing, health care, child care and education, and miscellaneous goods and services (the box below describes the specific items in each expenditure component).

Categories of Household Expenditures

Housing expenses consist of shelter (mortgage payments, property taxes, or rent; maintenance and repairs; and insurance), utilities (gas, electricity, fuel, cell/telephone, and water), and house furnishings and equipment (furniture, floor coverings, major appliances, and small appliances). Mortgage payments included principal and interest payments. Overall, principal payments constituted 15 percent of overall housing expenses.

Food expenses consist of food and nonalcoholic beverages purchased at grocery, convenience, and specialty stores, including purchases with Food Stamp Program (now the Supplemental Nutrition Assistance Program) benefits; dining at restaurants; and household expenditures on school meals.

Transportation expenses consist of the monthly payments on vehicle loans, down payments, gasoline and motor oil, maintenance and repairs, insurance, and public transportation (including airline fares).

Clothing expenses consist of children's apparel such as diapers, shirts, pants, dresses, and suits; footwear; and clothing services such as dry cleaning, alterations, and repair.

Health care expenses consist of medical and dental services not covered by insurance, prescription drugs and medical supplies not covered by insurance, and health insurance premiums not paid by an employer or other organization. Medical services include those related to physical and mental health.

Child care and education expenses consist of day care tuition and supplies; baby-sitting; and elementary and high school tuition, books, fees, and supplies. Books, fees, and supplies may be for private or public schools.

Miscellaneous expenses consist of personal care items (haircuts, toothbrushes, etc.), entertainment (portable media players, sports equipment, televisions, computers, etc.), and reading materials (nonschool books, magazines, etc.).

USDA's latest estimates are based on data from the 2005-06 CE—Interview Survey component. Administered by the U.S. Census Bureau, U.S. Department of Commerce, under contract with the Bureau of Labor Statistics (BLS), U.S. Department of Labor, the CE collects information on characteristics, income, and expenditures of consumer units. For this study, the terms households and families are used for consumer units. During most of 2005-06, about 7,000 to 7,800 households were interviewed each quarter, bringing the total number of interviews in each year's survey to over 28,000. Due to the rotating sample design of the Interview Survey, each sample household could be interviewed up to four consecutive quarters over the 2-year period. Households report expenditures for the 3 months prior to the interview month. Since the households interviewed each quarter are deemed an independent sample by BLS, the 3-month expenditures they report may be annualized (U.S. Department of Labor, 2007) for analytical purposes.

Child-rearing expenses of 11,800 husband-wife and 3,350 single-parent families where the parents were ages 20 to 60 were examined. These households had at least one child of their own, age 17 or under, in the household, and there were no other related or unrelated people present in the household except their own children. Most single-parent families (85 percent) were headed by a woman. BLS methods were used to weight all data to reflect the U.S. population of interest.

Although based on 2005-06 data, the expense estimates were updated to 2008 dollars by using the Consumer Price Index (CPI). Expenditure and income data for 2005 were first converted to 2006 dollars, analysis was undertaken, and then the resulting estimations were updated to 2008 dollars. Income levels of households were updated to 2008 dollars by using the all-items category of the CPI, and expenditures were updated by using the CPI for the corresponding budgetary component (i.e., the CPIs for housing, food, etc.). Regional CPIs were used to update the regional estimates to 2008 dollars.

Although the CE provides the best available data for estimating spending on children, it has its limitations. The CE contains overall household expenditure data for some budgetary components (housing, food, transportation, health care, and miscellaneous goods and services) and child-specific expenditure data for other components (children's clothing, child care, and education). Thus, to estimate child-rearing expenses, these household-level expenditures must be allocated among family members. The next sections describe the methodology used by USDA to allocate these household expenditures. Two different models were used, one to determine food, transportation, health care, clothing, child care and education, and miscellaneous expenses on children, and the other to determine housing expenses on children.

Determining Food, Transportation, Health Care, Clothing, Child Care and Education, and Miscellaneous Expenses on Children

For these budgetary components, multivariate analyses were used to estimate household and child-specific expenditures. These analyses controlled for income level, family size, and age of the younger child so that estimates could be made for families with these varying characteristics. The estimation model, conducted separately for husband-wife and single-parent households, for the overall United States was:

$$(1) E_i = f(Y, HS, CA)$$

where:

E_i = household expenditures on a particular budgetary component (food, transportation, health care, children's clothing, child care and education, and miscellaneous goods and services)

Y = household before-tax income (divided into three groups for husband-wife families: < \$56,870, \$56,870 to \$98,470, and > \$98,470 in 2008 dollars, and two groups for single-parent families: <\$56,870 and \$56,870 or more in 2008 dollars)

HS = number of children in the household (divided into three groups: 1 child, 2 children, and 3 or more children)

CA = age of the younger child (divided into six age groups: 0-2, 3-5, 6-8, 9-11, 12-14, and 15-17)

For the regional estimates of expenditures on children in husband-wife households, the model was:

$$(2) E_i = f(Y, HS, CA, RG)$$

where E_i through CA are the same as before and

RG = region (divided into five regions: urban Northeast, urban South, urban Midwest, urban West, and rural areas)

Ordinary Least Squares analysis was used to estimate expenditures on food, transportation, child care and education, and miscellaneous goods and services. Tobit analysis was used to estimate expenditures on health care and children's clothing because although most households had an expenditure on these budgetary components, over 10 percent reported zero expenses. Because of these zero expenditures, tobit analysis yields statistically better (unbiased) estimates than does Ordinary Least Squares analysis. The procedure outlined by McDonald and Moffitt (1980) was used to transform the estimates resulting from the tobit analysis into dollars. The coefficients of the estimates were used to calculate the expenditures for the budgetary components for each income group, age of the younger child, and region (for husband-wife families) for a two-child family. Households with two children were selected as the standard because two children was the average for husband-wife and single-parent families in 2005-06 based on CE data. Age of the older child was not controlled for because the focus was on the younger child and by doing so, results would only be applicable to families with an older child in a certain age category. It was therefore assumed the distribution of age ranges of the older child was similar across families. Also, additional analysis focused on the older child (see "Adjustments for Older Children and Household Size" section). Typically, the older child was 3 to 4 years older than the younger child and under age 18.

The three income groups of husband-wife households (before-tax income under \$56,870, between \$56,870 and \$98,470, and over \$98,470 in 2008 dollars) were determined by dividing the sample of husband-wife families for the overall United States into equal thirds. Income intervals were used to be consistent with previous USDA studies. These three income groups will be referred to as the lower (although most families in this group are above the poverty threshold), middle, and higher income groups. Income groups of single-parent households (before-tax income under \$56,870 and \$56,870 and over in 2008 dollars) were selected to correspond with the income groups used for husband-wife households for comparison purposes, that is, to see how child-rearing expenditures differed between husband-wife and single-parent households in the same income group. This income includes child-support payments. The two higher income groups used with husband-wife families were combined in the case of single-parent families because only 15 percent of these households had a before-tax income of \$56,870 and over.

Estimates were made for six age categories of younger children (0-2, 3-5, 6-8, 9-11, 12-14, and 15-17 years) because spending on children differs by age of the child. These age categories approximate the different stages of childhood and have historically been used. The focus was on the younger child in a household because the older child was sometimes over age 17. If the older child had been selected as the household member of interest, expenditures may be different. Also, if households with one or three or more children had been selected, per-child expenditures would reflect the differences in family size. As the number of children in a family increases, the allocation of resources among children changes. To adjust expenditures for the older child and number of children, see discussion beginning on page 15.

For husband-wife families, estimates are provided for the urban Northeast, urban South, urban Midwest, urban West, and rural areas overall, as well as for the overall United States. Urban areas are defined as Metropolitan Statistical Areas (MSAs) and other places of 2,500 or more people outside an MSA; rural areas are places of fewer than 2,500 people outside an MSA. Sample sizes were not sufficient to conduct regional analysis for single-parent families.

Once the expenditures on the budgetary components were estimated, they were allocated to children. The allocation methods varied by budgetary component and are described below.

Clothing. The CE collects data on how much families are spending on children's shoes, pants, dresses, and so on. Hence, estimated expenditures for clothing may be readily assigned to children. It was assumed these expenses were equally allocated to each child in the two-child household. CE data on children's clothing expenditures were for children age 15 and under. For the estimates, it was assumed the clothing expenditures of a 16- or 17-year-old were similar to those of a 15-year-old; thus, these older teenagers were assigned the expenditures of a 15-year-old. Also, expenditures for clothing services (dry cleaning, alterations, etc.), which account for a smaller proportion of total clothing expenses, were estimated for the overall household and allocated on a per capita basis among household members.

Child care and education. Child care and education was the only budgetary component for which about half of all households reported no expenditure. Expenditure on this budgetary component rose with household income level: for husband-wife families, 31 percent in the lower income group had this expenditure, compared with 45 and 56 percent in the middle and higher income groups; for single-parent families, the percentages were 34 and 44 percent for the lower and higher income groups. Previous USDA estimates of child care/education expenses on a child consisted of households with the expense as well as households without the expense. However, to be more applicable to families, this update included only those families with the expense. For families without child care/education expenses, this budgetary component would amount to zero; therefore, total expenditures on a child should be adjusted to account for this.

As with clothing, estimated expenditures for child care/education in the CE were only for the children in the household so may be readily assigned to them. It was assumed these expenses were equally allocated to each child in the two-child household. For preschool children, most of this budgetary-component expenditure is for child care, whereas for older children, most of this expenditure is for education (a major reason the two components are combined; otherwise, many age categories would have a negligible expense either for one or the other). The child care figures include families with part-time child care on a regular or irregular basis; therefore, they appear low when compared with those with full-time care. For more detailed analysis of average weekly child care expenses for families with the expense, see U.S. Census Bureau (2008). It should be noted that by only including households with child care/education expenses, the total expenses on a child as a result of summing the budgetary components may be over-estimated because those with child care/education expenses may have to draw from other child-rearing budgetary components (e.g., housing, transportation, miscellaneous) to pay for it.

Food. Although the CE did not collect expenditures on food by family member, data from the 2008 USDA food plans (U.S. Department of Agriculture, 2008) are used to calculate the shares of total household food expenses spent on children. These shares were used to apportion household food expenses by age of the household member, household size, and income. The USDA food plans are based on household food use and individual intake, as well as food expenditure data. The food plans also reflect the cost of a nutritious diet, which accounts for food costs, nutritional needs, and consumption behavior. These food budget shares, as derived from the USDA food plans, were applied to estimated household food expenditures to determine food expenses on children. The food budget shares ranged between 17 to 25 percent for a child in a two-child, husband-wife family and 25 to 34 percent for a child in a two-child, single-parent family (these shares being higher for a three-person household). Food budget shares generally increased with the age of the child and did not vary much by household income level.

Health care. Like food, expenditures on health care by family members were not collected by the CE. Data from other sources—in this case, the U.S. Department of Health and Human Service’s 2005 Medical Expenditure Panel Survey—show the share of household out-of-pocket health care expenses spent on children. These shares were used to apportion family health care expenses by age of the household member, household size, and income. The Medical Expenditure Panel Survey is a nationally representative longitudinal survey that collects detailed information on health care utilization and expenditures, health insurance, and health status, as well as a wide variety of social, demographic, and economic characteristics for the civilian noninstitutionalized population. (See Bernard, 2007, for more information about this survey, as well as for out-of-pocket expenditures on health care.)

These health care budget shares, as derived from the survey, were applied to estimated household health care expenditures to determine health care expenses on children. The health care budget shares ranged between 16 to 25 percent for a child in a two-child, husband-wife family and 24 to 33 percent for a child in a two-child, single-parent family (these shares again being higher for a three-person household). Health care budget shares generally increased with the age of the child and did not vary much by household income level. As an example of how health care expenditures were calculated on a 6- to 8-year-old, who is the younger child in a husband-wife, two-child household in the middle-income group, overall household health care expenditures were estimated from the multivariate analysis to be \$4,722 in 2008 dollars for this family type. Based on the Medical Expenditure Panel Survey, the health care budget share for this 6- to 8-year-old was figured to be 18 percent. Thus, health care expenditures on the 6- to 8-year-old were estimated to be \$850 ($=\$4,722 \times 0.18$).

Transportation. Transportation expenses related only to family-related activities were examined when determining child-rearing transportation expenses. These activities accounted for 59 percent of total transportation, according to a U.S. Department of Transportation study (Hu & Reuscher, 2004). Other transportation expenses, mainly those due to employment, as well as some household maintenance, are not related directly to expenses on children so these types of transportation expenses were excluded.

Unlike data for food and health care, no other data show the share of transportation expenses associated with child rearing. Hence, to allocate these expenses, the per capita method was used to determine family-related transportation expenses on a child by allocating in equal proportions the expenses among household members. One of the first studies on child-rearing expenses also used the per capita approach to allocate transportation expenses among family members (Dublin & Lotka, 1946). The per capita method for allocating transportation does not account for some families driving larger vehicles because of children, likely leading to underestimates of transportation expenses on children. Although the per capita method has its limitations, these were judged less severe than those of alternative approaches (see the “Alternative Estimates of Expenditures on Children” section of this report). For a child in a two-child, husband-wife family, the per capita method (factoring in only family-related travel) resulted in approximately 15 percent of total transportation expenses being allocated to the child; for a child in a two-child, single-parent family, 20 percent.

Miscellaneous expenses. As with expenditures on transportation, no other data show the share of miscellaneous expenses (personal care items, such as haircuts, toothbrushes, etc.; entertainment, such as portable media players, sports equipment, computers, etc.; and reading materials, such as nonschool books, magazines, etc.) attributed to child rearing. Therefore, the per capita method was used to apportion miscellaneous expenses among family members. For many of the goods and services in this budgetary component, such as fees and admissions, videos, and personal care items, the per capita method is reasonable because such goods and services are likely to be equally shared by family members.

Determining Housing Expenses on Children

An ideal method to estimate housing expenses on a child is to track families over time and see how their housing expenses change as children are added to the household. One would expect families to increase their housing expenditures as they move to larger residences to accommodate children. Child-related housing costs could therefore be calculated by utilizing these additional costs. Unfortunately, no existing data set collects this information. CE data have annual family housing expenses. So, to determine child-rearing housing expenses, one must use this information.

Based on the rationale that over time the presence of a child in a home does not affect the number of kitchens or living rooms, but does affect the number of bedrooms (analysis of CE data confirmed this), the average cost of an additional bedroom approach was used to estimate housing expenses on a child in husband-wife and single-parent households. Previously, a per capita approach was used by USDA to estimate children’s housing expenses, where housing expenses were assigned to household members in equal proportions. Because more data on housing characteristics have been made available in the CE survey over time, this average cost of an additional bedroom approach was developed. Specifically, this approach calculates child-rearing housing expenses as the extra housing costs associated with an additional bedroom in a home for families with children and in each income interval. Multivariate analysis was used

to determine the average additional costs by regressing housing expenditures on the number of bedrooms in a home controlling for income level. The analysis was conducted separately for husband-wife and single-parent families. Housing expenses were adjusted to account for regional variation in the case of husband-wife families.

Because most families with children resided in a three- or four-bedroom home, housing expenses on a child were calculated as the average additional cost of one (but not both) of these bedrooms. It was assumed that children in a two-child family do not share a bedroom. With this method, housing expenses on a child include the costs of utilities and furniture associated with the additional bedroom. These expenses also do not vary by age of the child because costs due to the bedroom would not be expected to differ much by age.

The average cost of an additional bedroom approach is a conservative estimate of housing expenses on children because it does not account fully for the fact that some families pay more for housing to live in a community with good schools or other amenities for children. Part of this expense is captured in the cost of the additional bedroom, but parents may be spending more on their own housing to live in certain communities than they would without children. In addition, it is a conservative estimate because it does not account fully for parents' purchasing of a home with a larger yard, a playroom, or child-specific furnishings in other rooms of the home because of children in the household; however, data on these housing characteristics are limited.

A variation of the average cost of an additional bedroom approach that could account for these factors (better schools, larger yards, etc.) would be to compare the extra housing expenses due to an additional bedroom of couples with children with the expenses of couples without children. Initial estimates based on this variation resulted in slightly higher housing expenses on a child than reported here. This approach was ultimately not used because of difficulties in establishing a comparison group of childless families not composed of "empty nest" households at various income levels.

In addition, it is likely that younger couples without children buy larger houses in anticipation of having children. Comparing the expenditures of these couples with those of similar couples with children could lead to underestimates of housing expenditures on children because couples without children have incorporated possible future children in their housing expenditures. For single-parent households, selection of a comparison group is difficult. Single individuals (with no children) would include many people spending more on housing because they do not have child-rearing obligations. Using the housing expense difference between these people and single-parent families could lead to severe underestimates of housing expenditures on children in single-parent families.

Results

Complete estimates of child-rearing expenditures by husband-wife and single-parent families are contained in tables 1-7 at the end of this report. The following sections discuss major findings regarding these child-rearing expenditures.

Husband-Wife Families

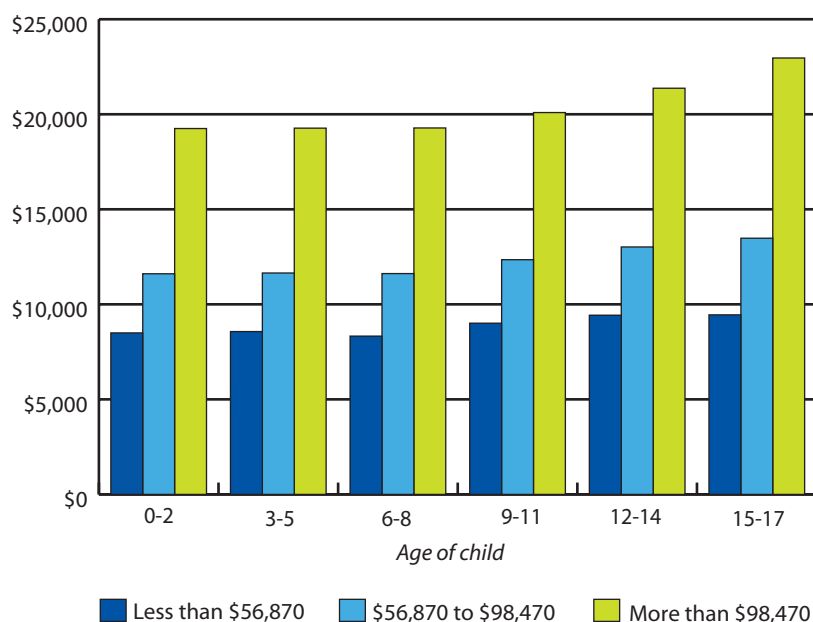
Child-Rearing Expenses and Household Income Are Positively Related

In 2008, estimated annual average expenses on the younger child in two-child, husband-wife families increased as income level rose (fig. 1). Depending on age of the child, annual expenses ranged from \$8,330 to \$9,450 for families with a before-tax income less than \$56,870, from \$11,610 to \$13,480 for families with a before-tax income between \$56,870 and \$98,470, and from \$19,250 to \$22,960 for families with a before-tax income more than \$98,470.

On average, households in the lowest income group spent 24 percent of their before-tax income on a child; those in the middle-income group, 16 percent; and those in the highest group, 12 percent. The range among these percentages would be narrower if after-tax income were considered.

The amount spent on a child by families in the highest income group, on average, was more than twice the amount spent by families in the lowest income group. This amount varied by budgetary component. In general, expenses on a child for goods and services considered to be necessities (e.g., food and clothing) did not vary as much as those considered to be discretionary (e.g., miscellaneous expenses) among households in the three income groups.

Figure 1. Family expenditures on a child, by income level and age of child,¹ 2008



¹U.S. average for the younger child in husband-wife families with two children.

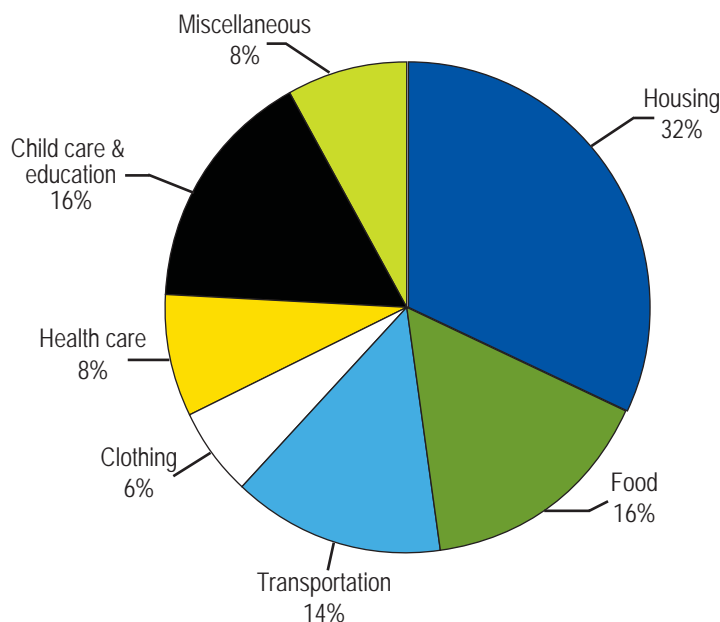
Housing Is the Largest Expense on a Child

Housing accounted for the largest share of total child-rearing expenses. Figure 2 demonstrates this for the younger child in husband-wife, middle-income families with two children. Based on expenses incurred among all age groups, housing accounted for 33 percent of child-rearing expenses for a child in the lowest income group, 32 percent in the middle-income group, and 35 percent in the highest income group.

As previously discussed, child care and education was the only budgetary component for which many households had a zero expenditure and the others had a positive expenditure. The USDA estimates include only families with expenditures on this budgetary component. For the highest income group (for households with the expense), child care and education was the second largest expenditure on a child, accounting for 22 percent of child-rearing expenses. A family is more likely to be in this higher income group with an additional earner and consequently more likely to incur child care expenses. For the other income groups, child care and education accounted for 13 to 16 percent of total child-rearing expenses (again, for households with the expense). It should be noted for lower income families, child care may be provided by relatives or friends at no cost due to affordability issues.

Food was the second largest expense on a child for families in the lowest income group, accounting for 18 percent of total expenditures. Food and child care/education were nearly tied for the second largest expense on a child for families in the middle-income group, each accounting for 16 percent of total expenditures (again, for households with child care/education expenses). For the highest income group, food accounted for 12 percent of child-rearing expenses. Transportation made up 12 to 14 percent of total child-rearing expenses over the income groups.

Figure 2. Expenditure shares on a child from birth through age 17 as a percentage of total child rearing expenditures,¹ 2008



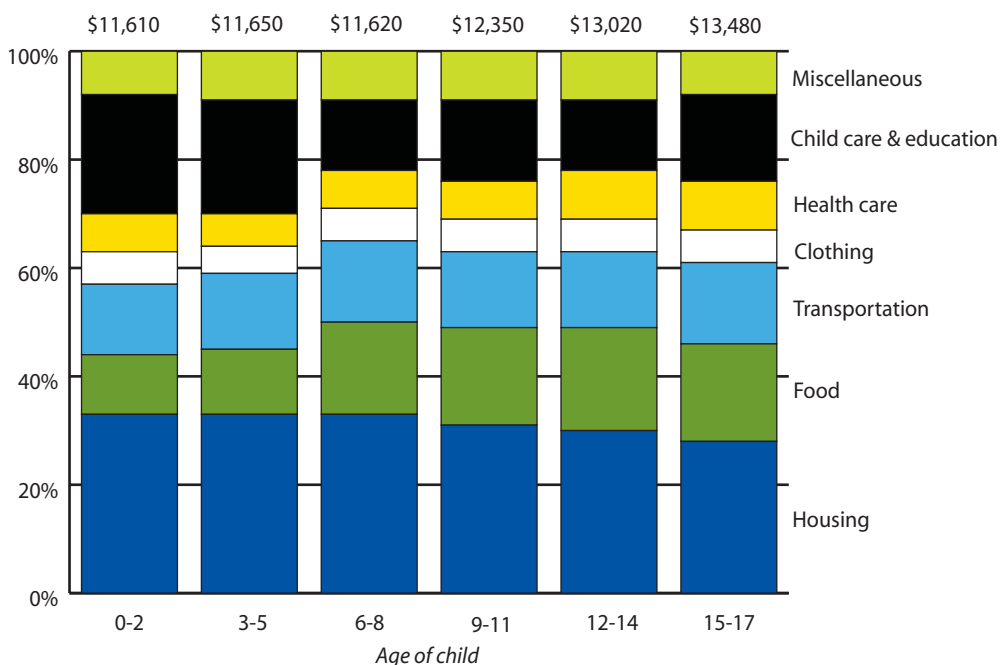
¹U.S. average for the younger child in middle-income, husband-wife families with two children. Child care and education expenses only for families with expense.

Across the three income groups, miscellaneous goods and services accounted for 7 to 9 percent of child-rearing expenses; clothing (excluding gifts or hand-me-downs), 5 to 7 percent, and health care, 5 to 8 percent. Expenditures for health care consist of out-of-pocket expenses only (including insurance premiums not paid by an employer or other organizations) and not that portion covered by health insurance. Annual expenditures on clothing for teens, as based on the CE data, are similar to the findings of another survey of annual spending on teen apparel (PiperJaffray, 2008).

Expenses Increase as a Child Ages

Expenditures on a child in husband-wife families were generally lower in the younger age categories and higher in the older age categories. Figure 3 depicts this for families in the middle-income group. This relationship held across income groups. For all three income groups, food, transportation, clothing, and health care expenses on a child generally increased as the child grew older. As children age, they have greater nutritional needs so consume more food. Transportation expenses were highest for a child age 15 to 17, when he or she would start driving. Child care and education expenses were generally highest for a child under age 6. Most of this expense may be attributed to child care at this age.

Figure 3. Total expenses and expenditure shares on a child (as a percentage of total child-rearing expenditures), by age of child,¹ 2008

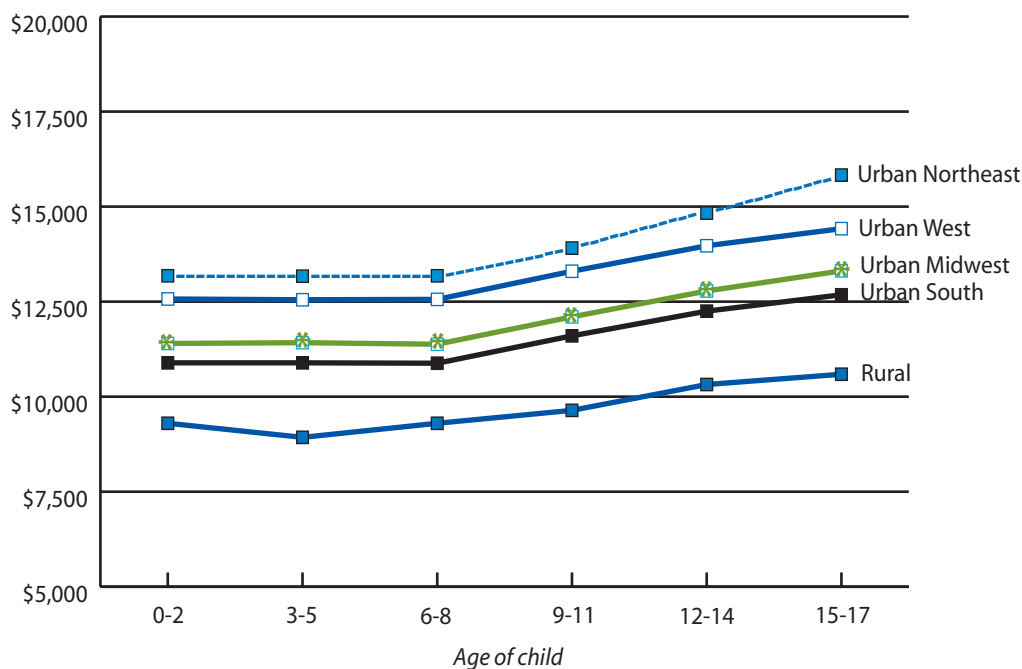


¹U.S. average for the younger child in middle-income, husband-wife families with two children. Child care and education expenses only for families with expense.

Child-Rearing Expenses Are Highest in the Urban Northeast

Child-rearing expenses in the regions of the country reflect patterns observed in the overall United States for husband-wife families: In each region, expenses on a child increased with household income level and typically with age of the child. Figure 4 shows total child-rearing expenses by region and age of a child for the younger child in middle-income, two-child families. Overall, child-rearing expenses were highest in the Urban Northeast, followed by the Urban West and Urban Midwest. Child-rearing expenses were lowest in the urban South and rural areas. Much of the regional difference in expenses on a child was related to housing costs and child care and education expenses. Total housing expenses on a child were highest in the Urban West and Urban Northeast and lowest in rural areas. Child care and education expenses were highest for families in the Urban Northeast. Child-rearing transportation expenses were highest for families in the urban West and rural areas. This likely reflects the longer traveling distances in these areas.

Figure 4. Family expenditures on a child, by region and age of child,¹ 2008



¹Regional averages for the younger child in middle-income, husband-wife families with two children.

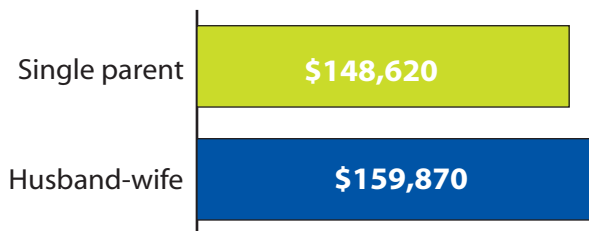
Single-Parent Families

Expenses on a child in single-parent families generally followed the same pattern as expenses on a child in husband-wife families: Expenses increased as household income level rose; housing, food, and child care/education (for those with the expense) accounted for the largest budgetary shares; and more was spent as children aged. An interesting question is, “How do child-rearing expenses of single-parent families compare with those of husband-wife families?”

Figure 5 presents a comparison of estimated expenditures on a younger child in a two-child, husband-wife and single-parent household with a before-tax income less than \$56,870; as previously discussed, 85 percent of single-parent families and 33 percent of husband-wife families were in this lower income group and this income included child support payments. Total expenditures on a child up to age 18 were, on average, 7 percent lower in single-parent households than in husband-wife households. But more single-parent than husband-wife families were in the bottom range of this income group. Average income for single-parent families in the lower income group was \$25,220, compared with \$36,380 for husband-wife families. Because single-parent families have one less potential earner, their total household income is lower and child-rearing expenses consume a greater percentage of income.

For single parents, the estimates only cover out-of-pocket child-rearing expenditures made by the parent who has primary care of the child. The estimates do not include child-related expenditures made by the parent without primary care or by others, such as grandparents. The parent with whom the child does not reside the majority of the time may incur transportation, food, and entertainment expenses during visitation days and maintain a larger living unit because the child stays with him or her on weekends. The noncustodial parent could also contribute to the child’s clothing and health care expenses. Although it would be ideal to include these expenditures, such expenditures could not be estimated from the CE data. Overall expenses paid by both parents on a child in a single-parent household, therefore, are likely to be greater than this study’s estimates.

Figure 5. Family expenditures on a child, by single-parent and husband-wife households,¹ 2008



¹U.S. average for the younger child in two-child families with before-tax income below \$56,870.

Adjustments for Older Children and Household Size

The estimates of expenses on children thus far represent expenditures on the younger children in a husband-wife and single-parent household with two children. Expenses on the older child may be different for the two family types. To determine the extent of this difference and how expenditures may be adjusted to estimate expenses on an older child, the USDA methodology to estimate expenditures on children was essentially repeated with the focus on an older child in each family type. Household income and region of residence (in the case of husband-wife households) were not controlled for, so findings apply to all families. The sample was smaller than that used for the principal analysis, since only households with all children age 17 or under were selected because the older child could not be over this age. The sample was weighted to reflect the U.S. population of interest.

It was found that tables 1-6 reflect total expenditures on an older child in a husband-wife, two-child family, as well as on a younger child. Therefore, annual expenditures on children in a husband-wife, two-child family may be estimated by summing the total expenses for the specific age categories of the two children. For example, annual expenditures on a younger child age 11 and an older child age 16 in a husband-wife, two-child family in the middle-income group for the overall United States would be \$25,830 ($=\$12,350 + \$13,480$) (table 8).

Unlike husband-wife families, single-parent households with two children spend about 3 percent less on the older child than on the younger child at a specific age category. This reduced spending was largely due to less being spent on transportation and miscellaneous goods and services for the older child. Older children in single-parent families may be able to take less expensive public transportation than be driven by the parent in a car and forgo some items that the younger child has. Also, some of these expenses may be covered by others not residing in the home. Therefore, annual expenditures on children in a single-parent, two-child family may be estimated from table 7 by: (1) taking the age category of the older child and adjusting the total expenses downward by 3 percent, and then (2) summing the total expenses for the specific age categories of the two children. For example, annual expenditures on a younger child age 8 and an older child age 16 in a single-parent, two-child family in the lower income group for the overall United States would be \$16,420 ($=\$8,010 + (\$8,670 \times .97)$) (table 8). It should be noted that for specific budgetary components, annual expenses on an older child in husband-wife and single-parent families varied, compared with those on a younger child in a two-child family.

The estimates should also be adjusted if a household has only one child or more than two children. Families will spend more or less on a child, depending on the number of other children in the household (income being spread over fewer or more children) and as a result of economies of scale. To derive these adjustments, the USDA methodology to estimate expenditures on children was replicated for both husband-wife and single-parent families with one child and three or more children. The maximum number of children was restricted to three or more because only a small percentage of families had four or more children. Household income and region of residence (in the case of husband-wife households) were not

Table 8. Estimated annual expenditures on one, two, or three children by husband-wife and single-parent families, overall United States, 2008

Husband-wife family*

Annual expenditure

One-child household

Age of child	
2	$\$11,610 \times 1.25 = \$14,510$
5	$11,650 \times 1.25 = 14,560$
8	$11,620 \times 1.25 = 14,530$
11	$12,350 \times 1.25 = 15,440$
14	$13,020 \times 1.25 = 16,280$
17	$13,480 \times 1.25 = 16,850$

Two-child household

Age of younger child	Age of older child	
2	16	$\$11,610 + \$13,480 = \$25,090$
5	16	$11,650 + 13,480 = 25,130$
8	16	$11,620 + 13,480 = 25,100$
11	16	$12,350 + 13,480 = 25,830$
14	16	$13,020 + 13,480 = 26,500$
15	16	$13,480 + 13,480 = 26,960$

Three-child household

Age of youngest child	Age of older children	
2	13,16	$(\$11,610 + \$13,020 + \$13,480) \times .78 = \$29,730$
5	13,16	$(11,650 + 13,020 + 13,480) \times .78 = 29,760$
8	13,16	$(11,620 + 13,020 + 13,480) \times .78 = 29,730$
11	13,16	$(12,350 + 13,020 + 13,480) \times .78 = 30,300$
12	13,16	$(13,020 + 13,020 + 13,480) \times .78 = 30,830$

*Estimates are for husband-wife families with 2008 before-tax income between \$56,870 and \$98,470.

Single-parent family**

Annual expenditure

One-child household

Age of child	
2	$\$7,330 \times 1.29 = \$9,460$
5	$8,100 \times 1.29 = 10,450$
8	$8,010 \times 1.29 = 10,330$
11	$8,520 \times 1.29 = 10,990$
14	$8,910 \times 1.29 = 11,490$
17	$8,670 \times 1.29 = 11,180$

Two-child household

Age of younger child	Age of older child	
2	16	$\$7,330 + (\$8,670 \times .97) = \$15,740$
5	16	$8,100 + (8,670 \times .97) = 16,510$
8	16	$8,010 + (8,670 \times .97) = 16,420$
11	16	$8,520 + (8,670 \times .97) = 16,930$
14	16	$8,910 + (8,670 \times .97) = 17,320$
15	16	$8,670 + (8,670 \times .97) = 17,080$

Three-child household

Age of youngest child	Age of older children	
2	13,16	$(\$7,330 + (\$8,910 \times .97) + (\$8,670 \times .97)) \times .77 = \$18,770$
5	13,16	$(8,100 + (8,910 \times .97) + (8,670 \times .97)) \times .77 = 19,370$
8	13,16	$(8,010 + (8,910 \times .97) + (8,670 \times .97)) \times .77 = 19,300$
11	13,16	$(8,520 + (8,910 \times .97) + (8,670 \times .97)) \times .77 = 19,690$
12	13,16	$(8,910 + (8,910 \times .97) + (8,670 \times .97)) \times .77 = 19,990$

**Estimates are for single-parent families with 2008 before-tax income less than \$56,870.

controlled for, so findings apply to all families. For families with three or more children, the possibility of children sharing a bedroom was factored in by examining the number of bedrooms and number of children in the household.

Compared with expenditures for each child in a husband-wife, two-child family, husband-wife households with one child spend an average of 25 percent more on the single child, and those with three or more children spend an average of 22 percent less on each child. For single-parent families, those with one child spend an average of 29 percent more on the single child than on a child in a two-child family, and those with three or more children spend an average of 23 percent less on each child. As families have more children, the children can share a bedroom, clothing and toys can be handed down to younger children, food can be purchased in larger and more economical packages, and private schools or child care centers may offer sibling discounts.

Therefore, to estimate annual overall expenditures on an only child by using data in tables 1-7, 25 percent should be added to the total expense for each age category for husband-wife families and 29 percent should be added to the total expense for each age category for single-parent families. To estimate expenses on three or more children in husband-wife families, 22 percent should be subtracted from the total expense for each child's age category and these totals should be summed. For single-parent families with three or more children, 23 percent should be subtracted from the total expense for each child's age category (after adjusting the expenses on the older children downward) and these totals should be summed. These percentages may be more or less for a particular budgetary component for both family types. As family size increases, costs per child for food decrease less than for housing and transportation. Much housing space is used in common, and car trips can serve more than one child.

As an example of adjustments needed for different numbers of children, consider total expenses on children in husband-wife families with one, two, and three children (presented in table 8 for a household with before-tax income between \$56,870 and \$98,470). In the example, the age of the older child is 16 in the two-child household and the ages of the older children are 13 and 16 in the three-child household. As can be seen, less is spent per child as family size increases. The estimated annual expense on a child age 2 with no siblings is \$14,510; for two children ages 2 and 16, \$25,090; and for three children ages 2, 13, and 16, \$29,730. Table 8 also shows the expenditure adjustments needed for children in single-parent families with one, two, and three children and with a before-tax income below \$56,870. The major difference in the mechanics of the adjustment for single-parent, compared with husband-wife households, is that the expenses on older children need to be adjusted downward by 3 percent.

Alternative Estimates of Expenditures on Children

The USDA methodology to estimate child-rearing expenses is based on several steps:

(1) assigning child-specific expenses (clothing, child care, and education) in the CE data to children, (2) allocating household-level expenses based on findings from authoritative research (food and health care) or on a per capita basis (transportation and miscellaneous items), and (3) calculating housing expenses by using an average cost of an additional bedroom approach.

An alternative method to estimate expenditures on children is a marginal cost method. The marginal cost method measures expenditures on children as the difference in expenses between families with children and equivalent families without children. While there is no generally accepted equivalency measure in the economics literature, two of the most commonly used are the Engel and Rothbarth approaches. The Engel approach assumes that if two families spend an equal percentage of their total expenditures on food, they are equally well-off.

The Rothbarth approach assumes that if two families spend an equal amount on luxuries (e.g., alcohol, tobacco, entertainment, and sweets) and have the same level of savings, they are equally well-off. (See U.S. Department of Health and Human Services, 1990, for more detailed information on these two approaches.)

One limitation of the Engel and Rothbarth estimators is that they are not true marginal cost approaches. A true marginal cost approach examines additional expenditures a family makes because of the presence of a child in the household—how much more the family spends on housing, food, and other items because of the child. A true marginal cost approach would track the same sample of families over time. Marginal cost approaches, as implemented, do not do this. They examine two different sets of families, those with children and those without children, at one point in time. Hence, the term “marginal cost approach” is somewhat of a misnomer.

Another limitation with the marginal cost approach is that it does not consider substitution effects. It assumes parents do not alter their expenditures on themselves after a child is added to a household. This could lead to problems when applying the marginal cost method to individual budgetary components. For example, many families may reduce the number of high-cost vacations they take once they have children. However, with the marginal cost method, transportation expenses of these families without children would be compared with expenses of families with children, likely leading to underestimates of transportation expenses on a child.

These problems with the marginal cost method are likely more severe if used to calculate miscellaneous expenses on a child. Published data show entertainment expenses, one of the major components of the miscellaneous category, were greater for husband-wife couples without children than for husband-wife families with young children (U.S. Department of Labor, 2008). Using the marginal cost method in this case could lead to the questionable result of having negative entertainment expenditures on a child. The household entertainment expenses of husband-wife couples without children were about the same as those of husband-wife families with an oldest child over age 18 living in the household, suggesting a miniscule expenditure on a child (U.S. Department of Labor, 2008).

Since 2000, several studies have estimated child-rearing expenses by using both the Engel and Rothbarth estimators and applying them to Consumer Expenditure Survey data. Table 9 shows the child-rearing expense estimates of these studies for husband-wife families by number of children and as a percentage of total family expenditures; these studies estimated child-rearing expenses as a percentage of total expenditures and did not examine expenses by budgetary component. It should be noted that the Rothbarth method was usually implemented by using only adult clothing as the equivalency method so is not a full implementation of the Rothbarth approach.

Table 9. Average percent of household expenditures attributable to children in husband-wife families, by estimator and number of children

Number of children	One	Two	Three
	<i>Percent</i>		
Estimator			
Engel (2001) ¹	30	44	52
Rothbarth (2001) ¹	26	36	42
Engel (2004) ²	22	38	53
Rothbarth (2006) ³	25	37	44
Engel (2008) ⁴	21	31	38
Rothbarth (2008) ⁴	32	47	57
Average of above	26	39	48
USDA (2009)	27	40	47

¹From Judicial Council of California (2001).

²From McCaleb, Macpherson, Norrbin, MacDonald, and Feng (2004).

³From Policy Studies Inc. (2006).

⁴From McCaleb, Macpherson, and Norrbin (2008).

What is striking is the range in estimates resulting from the various studies. For one child, the estimates ranged between 21 to 32 percent of household expenditures being spent on the child; for two children, 31 to 47 percent; and for three children, 38 to 57 percent (an almost 20 percentage point difference). When using the marginal cost method in estimating expenditures on children, a researcher's choice of an equivalency scale is crucial because different measures yield different results. Even using the same equivalency measure can result in different estimates, depending on the years of data used and model specification. For example, the 2006 study based on the Rothbarth estimator found that for two-child families, 37 percent of total family expenditures went to goods and services for children (Policy Studies Inc., 2006), while the 2008 study based on the Rothbarth estimator found that 47 percent of expenditures went to goods and services for two children (McCaleb et al., 2008).

So, how do the USDA child-rearing expense estimates compare with the results of these studies? Table 9 presents the USDA (2009) estimates. Because the studies implementing the Engel and Rothbarth techniques usually did not include personal insurance and pension contributions in

total household expenditures, when calculating the USDA child-rearing expenses as a percentage of total household expenditures, these two budgetary components were not included. Also, the marginal cost methods include families with child care/education expenses and families without child care/education expenses and do not include mortgage principal payments, so the USDA estimates in table 9 are based on average child care/education expenses for all husband-wife families, including those without the expense, and do not include mortgage principal, which constitutes about 15 percent of overall housing expenses. This differs from the USDA child-rearing expenditure estimates in tables 1-7, where mortgage principal payments are included in housing expenses and where child care/education expenses are only for families incurring the expense.

For husband-wife families with one child, USDA estimates 27 percent of total family expenditures are spent on the child; for two children, 40 percent; and for three children, 47 percent. These percentages are very near the averages of the various studies using the Engel and Rothbarth approaches. One factor the various approaches have in common is that expenditures on children do not increase proportionately as the number of children increases; expenditures on two children are less than twice as much as those on one child.

Estimating Future Costs

The estimates presented so far represent household expenditures on a child of a certain age in 2008. What would be the total expenses on a child born in 2008 through age 17, factoring in inflation? To estimate these expenses over time, future price changes need to be incorporated. To do this, a future cost formula is used:

$$C_f = C_p (1 + i)^n$$

Where:

C_f = projected future annual dollar expenditure on a child of a particular age

C_p = present (2008) annual dollar expenditure on a child of a particular age

i = projected annual inflation (or deflation) rate

n = number of years from present until child will reach a particular age

An example of estimated future expenditures on the younger child in a husband-wife family with two children is presented in table 10. The example assumes a child is born in 2008 and reaches age 17 in the year 2025, and the average annual inflation rate over this time is 3.05 percent (the average annual inflation rate over the past 20 years) (U.S. Department of Labor, 2009). As can be seen, total family expenses on a child through age 17 would be \$210,340 for households in the lowest income group, \$291,570 for those in the middle, and \$483,750 for those in the highest income group. In 2008 dollar values, these figures would be \$159,870, \$221,190, and \$366,660, respectively.

Inflation rates other than 3.05 percent could be used in the formula if inflation projections change. Also, it is somewhat unrealistic to assume that households remain in one income category as a child grows older. For most families, income rises over time, so a family may move from one income group to another. In addition, such inflation projections assume child-rearing expenditures change only with inflation. Parental expenditure patterns also change over time.

Table 10. Estimated annual expenditures* on a child born in 2008, by income group, overall United States

Year	Age	Income group		
		Lowest	Middle	Highest
2008	<1	\$8,500	\$11,610	\$19,250
2009	1	8,760	11,960	19,840
2010	2	9,030	12,330	20,440
2011	3	9,380	12,750	21,090
2012	4	9,660	13,140	21,730
2013	5	9,960	13,540	22,390
2014	6	9,980	13,920	23,090
2015	7	10,280	14,340	23,790
2016	8	10,590	14,780	24,520
2017	9	11,810	16,180	26,330
2018	10	12,170	16,680	27,130
2019	11	12,540	17,190	27,960
2020	12	13,520	18,670	30,650
2021	13	13,940	19,240	31,580
2022	14	14,360	19,830	32,540
2023	15	14,830	21,150	36,030
2024	16	15,280	21,800	37,130
2025	17	15,750	22,460	38,260
Total		\$210,340	\$291,570	\$483,750

*Estimates are for the younger child in husband-wife families with two children and assume an average annual inflation rate of 3.05 percent.

Expenditures Not Included

Expenditures estimated in this study consisted of direct parental expenses made on children through age 17 for seven major budgetary components. These expenditures exclude costs related to prenatal health care. The expenditures also exclude costs made on children after age 17. One of the largest of these expenses is the cost of a college education. The College Board (2009) estimated that in 2008-2009, annual average (enrollment-weighted) tuition and fees were \$6,585 at 4-year public colleges (in-State tuition) and \$25,143 at 4-year private (nonprofit) colleges; annual room and board was \$7,748 at 4-year public colleges and \$8,989 at 4-year private colleges. For 2-year colleges in 2008-2009, annual average tuition and fees were \$2,402 at public colleges. Other parental expenses on children after age 17 could include those associated with children living at home or if children do not live at home, gifts and other contributions to them. Expenses related to life insurance on parents are not included in the estimates. Although these expenses are not made directly on children, it is likely that they are primarily incurred for the benefit of children.

The estimates do not include all government expenditures on children. Examples of excluded expenses would be public education, Medicaid, and subsidized school meals. The actual expenditures on children (by parents and the government), therefore, would be higher than reported in this study, especially for children in the lowest income group. Expenditures on children made by people not in the household, such as grandparents and other relatives, were also not factored in. Indirect costs involved in child rearing were not included in the estimates. Although these costs are typically more difficult to measure than direct expenditures, they may be substantial. The time involved in rearing children is considerable and has a cost attached to it. A recent study found that the imputed value of parental time spent on children exceeded the direct cash expenditures on them (Folbre, 2008). In addition, to care for children, current earnings and future career opportunities may be diminished because of job choice or reduced time in the labor force for one or both parents. These situations also have a cost attached to them.

Expenditures on Children: 1960 vs. 2008

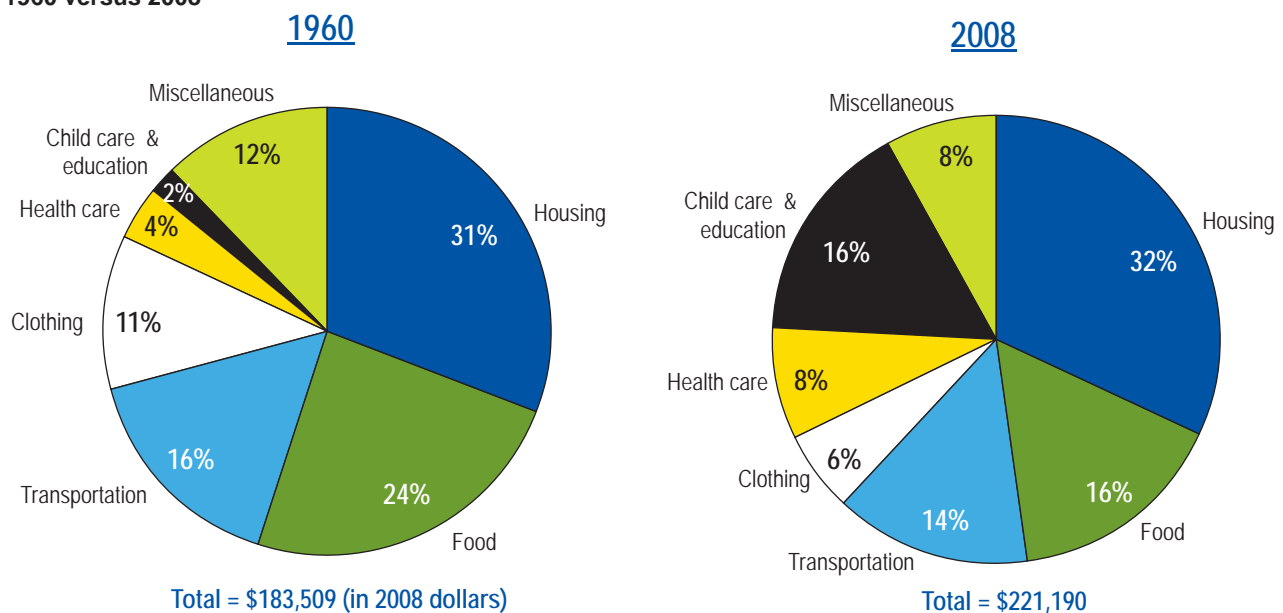
The United States Department of Agriculture first provided estimates of child-rearing expenditures in 1960. The current estimates are not precisely comparable to previous estimates because of methodology changes; for example, housing expenses are now determined by using the average cost of an additional bedroom as opposed to a per capita approach, and food expenses are now based on what households spend as opposed to a suggested standard. Although these types of methodological changes exist, a general comparison is possible.

In 1960, average expenditures on a child in a middle-income, husband-wife family amounted to \$25,229, or \$183,509 in 2008 dollars (figure). By 2008, these estimated expenditures climbed 21 percent in real terms to \$221,190 (assuming a family had child care and education expenses on a child). Housing was the largest expense on a child in both time periods and increased in real terms over this time. Food was also the second largest expense on a child in both time periods (it tied with child care/education in 2008), but decreased in real terms. Changes in agriculture over the past 50 years have resulted in family food budgets being a lower percentage of household income. Transportation expenses on a child increased slightly in real terms from 1960 to 2008.

Clothing and miscellaneous expenses on a child decreased as a percentage of total child-rearing expenses and in real terms from 1960 to 2008. Reduced real expenses on children's clothing is somewhat of a surprise given the popularity of many designer clothing items today; however, it is likely that technological changes and globalization have made clothing less expensive in real terms. The growth in real terms of housing and other expenses on a child may be the cause of the decline in miscellaneous expenses on a child, which are often seen as discretionary.

Health care expenses on a child doubled as a percentage of total child-rearing costs, as well as increasing in real terms, from 1960 to 2008. The dramatic rise in health care costs over time has received widespread attention. Perhaps the most striking change in child-rearing expenses over time relates to child care and education expenses. It should be noted that in 1960, child care/education expenses included families with and without the expense. Even so, these expenses grew from 2 percent of total child-rearing expenditures in 1960 (for families with and without the expense) to 16 percent (for families with the expense) in 2008. Much of this growth is likely related to child care. In 1960, child care costs were negligible, mainly consisting of in-the-home babysitting. Since then, the labor force participation of women has greatly increased, leading to the need for more child care. Child-rearing expense estimates were not provided for single-parent families in 1960, likely because of the small percentage of children residing in such households at the time.

Figure. Expenditures on a child from birth through age 17, total expenses and budgetary component shares, 1960 versus 2008¹



¹U.S. average for a child in middle-income, husband-wife families.

References

- Bernard, D. (2007). *Out-of-Pocket Expenditures on Health Care among the Nonelderly Population, 2004*. (Statistical Brief #159). Agency for Healthcare Research and Quality, Rockville, MD: Department of Health and Human Services.
- Dublin, L.I. & Lotka, A.J. (1946). *The Money Value of a Man*. New York City, NY: Ronald Press.
- Folbre, N. (2008). *Valuing Children: Rethinking the Economics of the Family*. Cambridge, MA: Harvard University Press.
- The College Board. (2009). *Trends in College Pricing 2008*. Retrieved January 30, 2009, from <http://www.collegeboard.org>.
- Hu, P.S & Reuscher, T.R. (2004). *Summary of Travel Trends: 2001 National Household Travel Survey*. Washington, DC: U.S. Department of Transportation, Federal Highway Administration.
- Judicial Council of California. (2001). *Review of Statewide Uniform Child Support Guideline*. Retrieved March 27, 2009 at <http://www.courtinfo.ca.gov/programs/cfcc/pdffiles/ChildSupport-2001UniformChildSupportGuideline.pdf>.
- Lino, M. (2008). *Expenditures on Children by Families, 2007*. U.S. Department of Agriculture, Center for Nutrition Policy and Promotion. (Miscellaneous Publication Number 1528-2007).
- McCaleb, T.S., Macpherson, D.A., Norrbin, S.C., MacDonald, L.C., & Feng, L. (2004). *Review and Update of Florida's Child Support Guidelines*. Report to the Florida Legislature, March 5, 2004.
- McCaleb, T.S., Macpherson, D.A., & Norrbin, S.C. (2008). *Review and Update of Florida's Child Support Guidelines*. Report to the Florida Legislature, November 17, 2008.
- McDonald, J.F. & Moffitt, R.A. (1980). The uses of Tobit analysis. *The Review of Economics and Statistics*, 62(2), 318-321.
- PiperJaffray. (2008). Teen survey reports slight increase in fashion spending. Retrieved October 14, 2008, from http://www.piperjaffray.com/2col_largerright.aspx?id=1088.
- Policy Studies Inc. (Venohr, J., Betson, D., Price, D., Zoller, M., & Washington, L.) (2006). *State of Oregon Child Support Guidelines Review: Updated Obligation Scales and Other Considerations*. Submitted to Department of Justice, Division of Child Support on June 26, 2006.

U.S. Census Bureau. (2008). *Who's Minding the Kids? Child Care Arrangements: Spring 2005*. Detailed Tables. Retrieved October 29, 2008, from <http://www.census.gov/population/socdemo/child/ppl-2005/tab06.xls>.

U.S. Department of Agriculture, Agricultural Research Service. (1981). *USDA Estimates of the Cost of Raising a Child: A Guide to Their Use and Interpretation*. (Miscellaneous Publication No. 1411).

U.S. Department of Agriculture, Center for Nutrition Policy and Promotion. (2008). *Official USDA Food Plans: Cost of Food at Home at Four Levels, U.S. Average, March 2008*. Alexandria, VA.

U.S. Department of Health and Human Services, Office of the Assistant Secretary for Planning and Evaluation. (1990). *Estimates of Expenditures on Children and Child Support Guidelines*.

U.S. Department of Labor, Bureau of Labor Statistics. (2007). *2005 Consumer Expenditure Interview Survey Public Use Microdata Documentation*.

U.S. Department of Labor, Bureau of Labor Statistics. (2008). *Composition of Consumer Unit: Average Annual Expenditures and Characteristics, Consumer Expenditure Survey, 2006*. Retrieved November 5, 2008, from <http://www.bls.gov/cex/2006/Standard/cucomp.pdf>.

U.S. Department of Labor, Bureau of Labor Statistics. (2009). *Consumer Price Index*. Retrieved January 22, 2009, from <ftp://ftp.bls.gov/pub/special.requests/cpi/cpi.ai.txt>.

Table 1. Estimated annual expenditures on a child by husband-wife families, overall United States, 2008

Age of child	Total expense	Housing	Food	Transportation	Clothing	Health care	Child care and education ^a	Miscellaneous ^b
Before-tax income: Less than \$56,870 (Average = \$36,380)								
0 - 2	\$8,500	\$2,950	\$1,090	\$1,080	\$620	\$570	\$1,780	\$410
3 - 5	8,570	2,950	1,190	1,130	490	540	1,670	600
6 - 8	8,330	2,950	1,610	1,240	560	600	750	620
9 - 11	9,010	2,950	1,850	1,250	570	650	1,130	610
12 - 14	9,430	2,950	2,010	1,360	670	990	770	680
15 - 17	9,450	2,950	2,000	1,510	710	920	790	570
Total (0 - 17)	\$159,870	\$53,100	\$29,250	\$22,710	\$10,860	\$12,810	\$20,670	\$10,470
Before-tax income: \$56,870 to \$98,470 (Average = \$76,520)								
0 - 2	\$11,610	\$3,870	\$1,310	\$1,550	\$740	\$770	\$2,500	\$870
3 - 5	11,650	3,870	1,400	1,600	600	730	2,390	1,060
6 - 8	11,620	3,870	1,970	1,720	670	850	1,460	1,080
9 - 11	12,350	3,870	2,250	1,720	690	910	1,840	1,070
12 - 14	13,020	3,870	2,420	1,830	820	1,280	1,660	1,140
15 - 17	13,480	3,870	2,410	1,980	880	1,210	2,100	1,030
Total (0 - 17)	\$221,190	\$69,660	\$35,280	\$31,200	\$13,200	\$17,250	\$35,850	\$18,750
Before-tax income: More than \$98,470 (Average = \$172,330)								
0 - 2	\$19,250	\$7,010	\$1,790	\$2,350	\$1,020	\$890	\$4,440	\$1,750
3 - 5	19,270	7,010	1,880	2,400	860	850	4,330	1,940
6 - 8	19,280	7,010	2,470	2,510	940	980	3,410	1,960
9 - 11	20,090	7,010	2,800	2,520	980	1,040	3,790	1,950
12 - 14	21,370	7,010	3,000	2,630	1,140	1,470	4,100	2,020
15 - 17	22,960	7,010	2,990	2,780	1,240	1,390	5,640	1,910
Total (0 - 17)	\$366,660	\$126,180	\$44,790	\$45,570	\$18,540	\$19,860	\$77,130	\$34,590

Estimates are based on 2005-06 Consumer Expenditure Survey data updated to 2008 dollars by using the Consumer Price Index. For each age category, the expense estimates represent average child-rearing expenditures for each age (e.g., the expense for the 3-5 age category, on average, applies to the 3-year-old, the 4-year-old, or the 5-year-old). The Total (0 - 17) row represents the expenditure sum of all ages (0, 1, 2, 3, ...17) in 2008 dollars. The figures represent estimated expenses on the younger child in a two-child family.

Estimates are about the same for the older child, so to calculate expenses for two children, figures should be summed for the appropriate age categories. To estimate expenses for an only child, multiply the total expense for the appropriate age category by 1.25. To estimate expenses for each child in a family with three or more children, multiply the total expense for each appropriate age category by 0.78.

For expenses on all children in a family, these totals should be summed.

^a Includes only families with Child care and education expenses.

^b Includes personal care items, entertainment, and reading materials.

Table 2. Estimated annual expenditures on a child by husband-wife families, urban Northeast, 2008

Age of child	Total expense	Housing	Food	Transportation	Clothing	Health care	Child care and education ^a	Miscellaneous ^b
Before-tax income: Less than \$56,790 (Average = \$36,330)								
0 - 2	\$9,990	\$3,490	\$1,150	\$1,020	\$670	\$510	\$2,730	\$420
3 - 5	10,020	3,490	1,250	1,070	530	480	2,580	620
6 - 8	9,790	3,490	1,690	1,180	600	540	1,650	640
9 - 11	10,490	3,490	1,950	1,190	620	590	2,020	630
12 - 14	11,160	3,490	2,110	1,300	740	890	1,930	700
15 - 17	11,780	3,490	2,100	1,440	800	830	2,540	580
Total (0 - 17)	\$189,690	\$62,820	\$30,750	\$21,600	\$11,880	\$11,520	\$40,350	\$10,770
Before-tax income: \$56,790 to \$98,330 (Average = \$76,420)								
0 - 2	\$13,180	\$4,580	\$1,370	\$1,500	\$800	\$700	\$3,360	\$870
3 - 5	13,170	4,580	1,460	1,550	640	660	3,210	1,070
6 - 8	13,180	4,580	2,050	1,670	720	780	2,290	1,090
9 - 11	13,910	4,580	2,340	1,670	750	830	2,650	1,090
12 - 14	14,830	4,580	2,520	1,780	900	1,170	2,720	1,160
15 - 17	15,830	4,580	2,510	1,930	980	1,100	3,690	1,040
Total (0 - 17)	\$252,300	\$82,440	\$36,750	\$30,300	\$14,370	\$15,720	\$53,760	\$18,960
Before-tax income: More than \$98,330 (Average = \$172,100)								
0 - 2	\$21,330	\$8,290	\$1,840	\$2,300	\$1,080	\$820	\$5,260	\$1,740
3 - 5	21,320	8,290	1,930	2,350	910	780	5,120	1,940
6 - 8	21,330	8,290	2,540	2,460	990	900	4,190	1,960
9 - 11	22,150	8,290	2,880	2,470	1,040	960	4,560	1,950
12 - 14	23,650	8,290	3,080	2,580	1,230	1,350	5,100	2,020
15 - 17	25,780	8,290	3,070	2,720	1,350	1,280	7,160	1,910
Total (0 - 17)	\$406,680	\$149,220	\$46,020	\$44,640	\$19,800	\$18,270	\$94,170	\$34,560

Estimates are based on 2005-06 Consumer Expenditure Survey data updated to 2008 dollars by using the regional Consumer Price Index. For each age category, the expense estimates represent average child-rearing expenditures for each age (e.g., the expense for the 3-5 age category, on average, applies to the 3-year-old, the 4-year-old, or the 5-year-old). The Total (0 - 17) row represents the expenditure sum of all ages (0, 1, 2, 3, ...17) in 2008 dollars. The figures represent estimated expenses on the younger child in a two-child family. Estimates are about the same for the older child, so to calculate expenses for two children, figures should be summed for the appropriate age categories. To estimate expenses for an only child, multiply the total expense for the appropriate age category by 1.25. To estimate expenses for each child in a family with three or more children, multiply the total expense for each appropriate age category by 0.78. For expenses on all children in a family, these totals should be summed.

The Northeast region consists of Connecticut, Maine, Massachusetts, New Hampshire, New Jersey, New York, Pennsylvania, Rhode Island, and Vermont.

^a Includes only families with Child care and education expenses.

^b Includes personal care items, entertainment, and reading materials.

Table 3. Estimated annual expenditures on a child by husband-wife families, urban West, 2008

Age of child	Total expense	Housing	Food	Transportation	Clothing	Health care	Child care and education ^a	Miscellaneous ^b
Before-tax income: Less than \$56,860 (Average = \$36,370)								
0 - 2	\$9,350	\$3,540	\$1,150	\$1,170	\$660	\$520	\$1,770	\$540
3 - 5	9,380	3,540	1,250	1,220	520	490	1,620	740
6 - 8	9,170	3,540	1,690	1,340	590	550	700	760
9 - 11	9,850	3,540	1,940	1,340	610	600	1,070	750
12 - 14	10,270	3,540	2,100	1,450	720	910	730	820
15 - 17	10,350	3,540	2,100	1,590	770	840	800	710
Total (0 - 17)	\$175,110	\$63,720	\$30,690	\$24,330	\$11,610	\$11,730	\$20,070	\$12,960
Before-tax income: \$56,860 to \$98,450 (Average = \$76,510)								
0 - 2	\$12,570	\$4,650	\$1,370	\$1,650	\$790	\$710	\$2,400	\$1,000
3 - 5	12,550	4,650	1,460	1,700	630	670	2,250	1,190
6 - 8	12,560	4,650	2,050	1,820	710	790	1,330	1,210
9 - 11	13,300	4,650	2,340	1,820	730	850	1,700	1,210
12 - 14	13,970	4,650	2,520	1,940	870	1,190	1,520	1,280
15 - 17	14,420	4,650	2,510	2,080	950	1,120	1,950	1,160
Total (0 - 17)	\$238,110	\$83,700	\$36,750	\$33,030	\$14,040	\$15,990	\$33,450	\$21,150
Before-tax income: More than \$98,450 (Average = \$172,300)								
0 - 2	\$20,780	\$8,420	\$1,840	\$2,450	\$1,070	\$830	\$4,310	\$1,860
3 - 5	20,760	8,420	1,930	2,500	900	790	4,160	2,060
6 - 8	20,800	8,420	2,530	2,620	990	920	3,240	2,080
9 - 11	21,600	8,420	2,870	2,620	1,030	980	3,610	2,070
12 - 14	22,860	8,420	3,070	2,730	1,210	1,380	3,910	2,140
15 - 17	24,430	8,420	3,070	2,870	1,320	1,300	5,420	2,030
Total (0 - 17)	\$393,690	\$151,560	\$45,930	\$47,370	\$19,560	\$18,600	\$73,950	\$36,720

Estimates are based on 2005-06 Consumer Expenditure Survey data updated to 2008 dollars by using the regional Consumer Price Index. For each age category, the expense estimates represent average child-rearing expenditures for each age (e.g., the expense for the 3-5 age category, on average, applies to the 3-year-old, the 4-year-old, or the 5-year-old). The Total (0 - 17) row represents the expenditure sum of all ages (0, 1, 2, 3, ...17) in 2008 dollars. The figures represent estimated expenses on the younger child in a two-child family. Estimates are about the same for the older child, so to calculate expenses for two children, figures should be summed for the appropriate age categories. To estimate expenses for an only child, multiply the total expense for the appropriate age category by 1.25. To estimate expenses for each child in a family with three or more children, multiply the total expense for each appropriate age category by 0.78. For expenses on all children in a family, these totals should be summed.

The Western region consists of Alaska, Arizona, California, Colorado, Hawaii, Idaho, Montana, Nevada, New Mexico, Oregon, Utah, Washington, and Wyoming.

^a Includes only families with Child care and education expenses.

^b Includes personal care items, entertainment, and reading materials.

Table 4. Estimated annual expenditures on a child by husband-wife families, urban Midwest, 2008

Age of child	Total expense	Housing	Food	Transportation	Clothing	Health care	Child care and education ^a	Miscellaneous ^b
Before-tax income: Less than \$56,670 (Average = \$36,250)								
0 - 2	\$8,400	\$2,850	\$1,030	\$1,020	\$610	\$540	\$1,890	\$460
3 - 5	8,420	2,850	1,120	1,070	470	510	1,740	660
6 - 8	8,180	2,850	1,530	1,190	540	570	820	680
9 - 11	8,850	2,850	1,780	1,190	550	610	1,190	680
12 - 14	9,310	2,850	1,930	1,300	660	930	890	750
15 - 17	9,450	2,850	1,920	1,450	700	870	1,030	630
Total (0 - 17)	\$157,830	\$51,300	\$27,930	\$21,660	\$10,590	\$12,090	\$22,680	\$11,580
Before-tax income: \$56,670 to \$98,120 (Average = \$76,250)								
0 - 2	\$11,400	\$3,750	\$1,250	\$1,500	\$730	\$730	\$2,520	\$920
3 - 5	11,420	3,750	1,340	1,560	580	690	2,380	1,120
6 - 8	11,380	3,750	1,900	1,680	650	810	1,450	1,140
9 - 11	12,100	3,750	2,170	1,680	680	870	1,820	1,130
12 - 14	12,780	3,750	2,340	1,790	810	1,220	1,670	1,200
15 - 17	13,310	3,750	2,340	1,940	880	1,140	2,170	1,090
Total (0 - 17)	\$217,170	\$67,500	\$34,020	\$30,450	\$12,990	\$16,380	\$36,030	\$19,800
Before-tax income: More than \$98,120 (Average = \$171,710)								
0 - 2	\$18,890	\$6,780	\$1,720	\$2,310	\$1,000	\$850	\$4,430	\$1,800
3 - 5	18,870	6,780	1,810	2,370	830	810	4,280	1,990
6 - 8	18,880	6,780	2,390	2,480	920	940	3,360	2,010
9 - 11	19,690	6,780	2,720	2,490	960	1,000	3,730	2,010
12 - 14	20,960	6,780	2,910	2,600	1,130	1,400	4,060	2,080
15 - 17	22,590	6,780	2,900	2,750	1,240	1,320	5,640	1,960
Total (0 - 17)	\$359,640	\$122,040	\$43,350	\$45,000	\$18,240	\$18,960	\$76,500	\$35,550

Estimates are based on 2005-06 Consumer Expenditure Survey data updated to 2008 dollars by using the regional Consumer Price Index. For each age category, the expense estimates represent average child-rearing expenditures for each age (e.g., the expense for the 3-5 age category, on average, applies to the 3-year-old, the 4-year-old, or the 5-year-old). The Total (0 - 17) row represents the expenditure sum of all ages (0, 1, 2, 3, ...17) in 2008 dollars. The figures represent estimated expenses on the younger child in a two-child family. Estimates are about the same for the older child, so to calculate expenses for two children, figures should be summed for the appropriate age categories. To estimate expenses for an only child, multiply the total expense for the appropriate age category by 1.25. To estimate expenses for each child in a family with three or more children, multiply the total expense for each appropriate age category by 0.78. For expenses on all children in a family, these totals should be summed.

The Midwest region consists of Illinois, Indiana, Iowa, Kansas, Michigan, Minnesota, Missouri, Nebraska, North Dakota, Ohio, South Dakota, and Wisconsin.

^a Includes only families with Child care and education expenses.

^b Includes personal care items, entertainment, and reading materials.

Table 5. Estimated annual expenditures on a child by husband-wife families, urban South, 2008

Age of child	Total expense	Housing	Food	Transportation	Clothing	Health care	Child care and education ^a	Miscellaneous ^b
Before-tax income: Less than \$57,070 (Average = \$36,510)								
0 - 2	\$7,960	\$2,660	\$1,080	\$1,030	\$620	\$540	\$1,730	\$300
3 - 5	7,980	2,660	1,180	1,080	490	500	1,580	490
6 - 8	7,740	2,660	1,600	1,200	550	560	660	510
9 - 11	8,440	2,660	1,850	1,210	570	610	1,030	510
12 - 14	8,860	2,660	2,010	1,320	680	930	680	580
15 - 17	8,890	2,660	2,000	1,460	720	860	730	460
Total (0 - 17)	\$149,610	\$47,880	\$29,160	\$21,900	\$10,890	\$12,000	\$19,230	\$8,550
Before-tax income: \$57,070 to \$98,820 (Average = \$76,800)								
0 - 2	\$10,890	\$3,490	\$1,300	\$1,520	\$740	\$730	\$2,360	\$750
3 - 5	10,890	3,490	1,390	1,570	590	690	2,210	950
6 - 8	10,880	3,490	1,970	1,690	670	800	1,290	970
9 - 11	11,600	3,490	2,250	1,690	690	860	1,660	960
12 - 14	12,250	3,490	2,420	1,810	820	1,210	1,470	1,030
15 - 17	12,680	3,490	2,420	1,950	890	1,140	1,870	920
Total (0 - 17)	\$207,570	\$62,820	\$35,250	\$30,690	\$13,200	\$16,290	\$32,580	\$16,740
Before-tax income: More than \$98,820 (Average = \$172,950)								
0 - 2	\$18,170	\$6,320	\$1,770	\$2,320	\$1,020	\$850	\$4,270	\$1,620
3 - 5	18,150	6,320	1,860	2,380	850	800	4,120	1,820
6 - 8	18,170	6,320	2,460	2,490	930	930	3,200	1,840
9 - 11	18,970	6,320	2,790	2,500	970	990	3,570	1,830
12 - 14	20,220	6,320	2,990	2,610	1,150	1,400	3,850	1,900
15 - 17	21,760	6,320	2,980	2,760	1,250	1,320	5,340	1,790
Total (0 - 17)	\$346,320	\$113,760	\$44,550	\$45,180	\$18,510	\$18,870	\$73,050	\$32,400

Estimates are based on 2005-06 Consumer Expenditure Survey data updated to 2008 dollars by using the regional Consumer Price Index. For each age category, the expense estimates represent average child-rearing expenditures for each age (e.g., the expense for the 3-5 age category, on average, applies to the 3-year-old, the 4-year-old, or the 5-year-old). The total (0 - 17) row represents the expenditure sum of all ages (0, 1, 2, 3, ...17) in 2008 dollars. The figures represent estimated expenses on the younger child in a two-child family. Estimates are about the same for the older child, so to calculate expenses for two children, figures should be summed for the appropriate age categories. To estimate expenses for an only child, multiply the total expense for the appropriate age category by 1.25. To estimate expenses for each child in a family with three or more children, multiply the total expense for each appropriate age category by 0.78. For expenses on all children in a family, these totals should be summed.

The Southern region consists of Alabama, Arkansas, Delaware, District of Columbia, Florida, Georgia, Kentucky, Louisiana, Maryland, Mississippi, North Carolina, Oklahoma, South Carolina, Tennessee, Texas, Virginia, and West Virginia.

^a Includes only families with Child care and education expenses.

^b Includes personal care items, entertainment, and reading materials.

Table 6. Estimated annual expenditures on a child by husband-wife families, Rural areas, 2008

Age of child	Total expense	Housing	Food	Transportation	Clothing	Health care	Child care and education ^a	Miscellaneous ^b
Before-tax income: Less than \$57,090 (Average = \$36,520)								
0 - 2	\$7,080	\$1,810	\$960	\$1,170	\$600	\$570	\$1,600	\$370
3 - 5	6,730	1,810	1,050	1,220	470	540	1,070	570
6 - 8	6,910	1,810	1,450	1,340	540	600	580	590
9 - 11	7,180	1,810	1,690	1,340	550	640	560	590
12 - 14	7,760	1,810	1,840	1,450	650	980	370	660
15 - 17	7,920	1,810	1,830	1,600	690	910	540	540
Total (0 - 17)	\$130,740	\$32,580	\$26,460	\$24,360	\$10,500	\$12,720	\$14,160	\$9,960
Before-tax income: \$57,090 to \$98,850 (Average = \$76,820)								
0 - 2	\$9,300	\$2,380	\$1,190	\$1,650	\$720	\$770	\$1,760	\$830
3 - 5	8,930	2,380	1,280	1,710	570	730	1,230	1,030
6 - 8	9,300	2,380	1,820	1,820	640	850	740	1,050
9 - 11	9,640	2,380	2,090	1,830	670	910	720	1,040
12 - 14	10,320	2,380	2,260	1,940	790	1,270	570	1,110
15 - 17	10,590	2,380	2,250	2,090	850	1,200	820	1,000
Total (0 - 17)	\$174,240	\$42,840	\$32,670	\$33,120	\$12,720	\$17,190	\$17,520	\$18,180
Before-tax income: More than \$98,850 (Average = \$173,000)								
0 - 2	\$14,760	\$4,310	\$1,660	\$2,460	\$990	\$890	\$2,740	\$1,710
3 - 5	14,350	4,310	1,750	2,510	830	850	2,200	1,900
6 - 8	14,790	4,310	2,320	2,630	910	980	1,720	1,920
9 - 11	15,180	4,310	2,640	2,630	940	1,040	1,700	1,920
12 - 14	16,240	4,310	2,830	2,750	1,110	1,460	1,790	1,990
15 - 17	17,080	4,310	2,830	2,890	1,200	1,380	2,600	1,870
Total (0 - 17)	\$277,200	\$77,580	\$42,090	\$47,610	\$17,940	\$19,800	\$38,250	\$33,930

Estimates are based on 2005-06 Consumer Expenditure Survey data updated to 2008 dollars by using the population size Consumer Price Index. For each age category, the expense estimates represent average child-rearing expenditures for each age (e.g., the expense for the 3-5 age category, on average, applies to the 3-year-old, the 4-year-old, or the 5-year-old). The Total (0 - 17) row represents the expenditure sum of all ages (0, 1, 2, 3, ...17) in 2008 dollars. The figures represent estimated expenses on the younger child in a two-child family. Estimates are about the same for the older child, so to calculate expenses for two children, figures should be summed for the appropriate age categories. To estimate expenses for an only child, multiply the total expense for the appropriate age category by 1.25. To estimate expenses for each child in a family with three or more children, multiply the total expense for each appropriate age category by 0.78. For expenses on all children in a family, these totals should be summed.

Rural areas are places of fewer than 2,500 people outside a Metropolitan Statistical Area.

^a Includes only families with Child care and education expenses.

^b Includes personal care items, entertainment, and reading materials.

Table 7. Estimated annual expenditures on a child by single-parent families, overall United States, 2008

Age of child	Total expense	Housing	Food	Transportation	Clothing	Health care	Child care and education ^a	Miscellaneous ^b
Before-tax income: Less than \$56,870 (Average = \$25,220)								
0 - 2	\$7,330	\$2,800	\$1,310	\$630	\$400	\$470	\$1,220	\$500
3 - 5	8,100	2,800	1,290	850	320	550	1,690	600
6 - 8	8,010	2,800	1,720	940	330	610	840	770
9 - 11	8,520	2,800	1,890	980	390	560	1,180	720
12 - 14	8,910	2,800	2,020	1,040	410	850	970	820
15 - 17	8,670	2,800	2,130	1,040	440	840	770	650
Total (0 - 17)	\$148,620	\$50,400	\$31,080	\$16,440	\$6,870	\$11,640	\$20,010	\$12,180
Before-tax income: \$56,870 or more (Average = \$103,200)								
0 - 2	\$15,810	\$5,800	\$1,950	\$1,760	\$580	\$890	\$3,210	\$1,620
3 - 5	16,600	5,800	1,950	1,990	490	990	3,670	1,710
6 - 8	16,780	5,800	2,510	2,080	510	1,080	2,920	1,880
9 - 11	17,570	5,800	2,820	2,120	590	1,010	3,390	1,840
12 - 14	18,490	5,800	2,890	2,180	640	1,420	3,620	1,940
15 - 17	19,270	5,800	3,030	2,180	710	1,410	4,370	1,770
Total (0 - 17)	\$313,560	\$104,400	\$45,450	\$36,930	\$10,560	\$20,400	\$63,540	\$32,280

Estimates are based on 2005-06 Consumer Expenditure Survey data updated to 2008 dollars by using the Consumer Price Index. For each age category, the expense estimates represent average child-rearing expenditures for each age (e.g., the expense for the 3-5 age category, on average, applies to the 3-year-old, the 4-year-old, or the 5-year-old). The Total (0 - 17) row represents the expenditure sum of all ages (0, 1, 2, 3, ...17) in 2008 dollars. The figures represent estimated expenses on the younger child in a single-parent, two-child family. For estimated expenses on the older child, multiply the total expense for the appropriate age category by 0.97. To estimate expenses for two children, the expenses on the younger child and older child after adjusting the expense on the older child downward should be summed for the appropriate age categories. To estimate expenses for an only child, multiply the total expense for the appropriate age category by 1.29. To estimate expenses for each child in a family with three or more children, multiply the total expense for each appropriate age category by 0.77 after adjusting the expenses on the older children downward. For expenses on all children in a family, these totals should be summed.

^a Includes only families with Child care and education expenses.

^b Includes personal care items, entertainment, and reading materials.

**U.S. Department of Agriculture
Center for Nutrition Policy and Promotion
3101 Park Center Drive, Suite 1034
Alexandria, VA 22302**

**703-305-7600
www.cnpp.usda.gov**