



AgEcon SEARCH
RESEARCH IN AGRICULTURAL & APPLIED ECONOMICS

The World's Largest Open Access Agricultural & Applied Economics Digital Library

This document is discoverable and free to researchers across the globe due to the work of AgEcon Search.

Help ensure our sustainability.

Give to AgEcon Search

AgEcon Search
<http://ageconsearch.umn.edu>
aesearch@umn.edu

*Papers downloaded from **AgEcon Search** may be used for non-commercial purposes and personal study only. No other use, including posting to another Internet site, is permitted without permission from the copyright owner (not AgEcon Search), or as allowed under the provisions of Fair Use, U.S. Copyright Act, Title 17 U.S.C.*

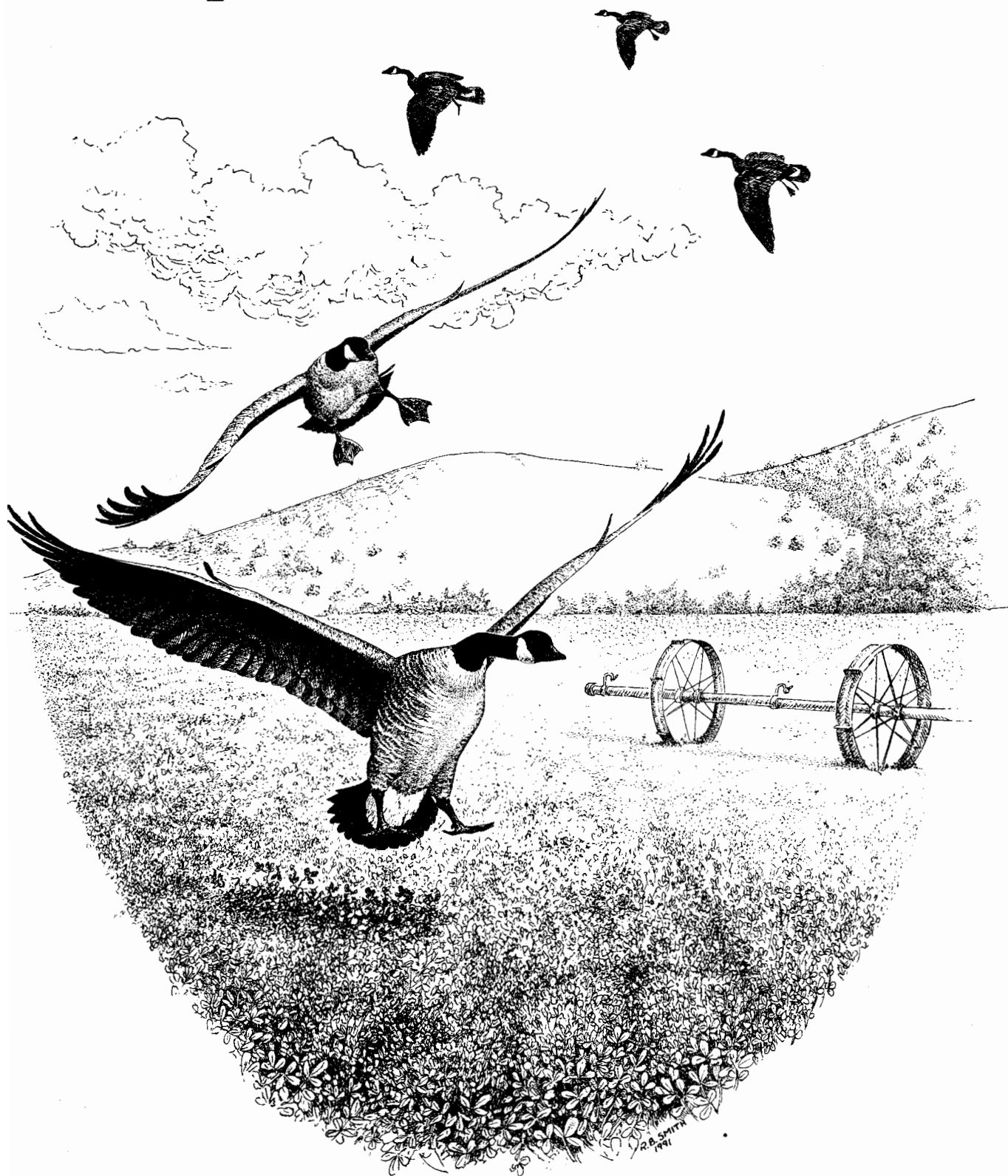
California Department of Food and Agriculture

Agricultural Commissioners' Crop Reports

Los Angeles County

1990-1991, & 1993-1994

1990 Crop and Livestock Report



County of Los Angeles
Agricultural Commissioner/Weights & Measures Department



COUNTY OF LOS ANGELES

Department of
Agricultural Commissioner
and Weights and Measures

3400 La Madera Avenue
El Monte, California 91732

William A. Edwards
Chief Deputy

E. Leon Spaugy
Agricultural Commissioner/
Director of Weights and Measures

1990 CROP AND LIVESTOCK REPORT

Agriculture in Los Angeles County remained constant with slight to moderate gains in most areas. The combined gross value of Fruit, Nut, Field, Vegetable, and Nursery Crops were up by 2%, although total agricultural value declined 6.5%. A significant factor resulting in the drop was a decline in the production and price of poultry.

Strong strawberry prices along with increased production resulted in a 32% rebound for this crop despite a reduction in acreage. Avocados joined the one million dollar crop category as a result of increases in production acreage.

Gross value increased for Fruits and Nuts by 12%, for Field Crops by 14%, for Nursery Products by 3%, for Cut Flowers by 3%, and for Apiary, Livestock and Poultry Products by 60%.

Vegetable Crop gross value decreased by 30%. Lower dry onion prices, along with the loss of a large table greens grower, were major contributors in this decline.

Christmas tree production rebounded with increased acreage, production, and higher prices resulting in a total gross value of \$954,000, an increase of 62%.

The new Sustainable Agriculture Section indicates the continued hazard of exotic pests. High levels of interception reflect Los Angeles County's energetic exclusion program.

Crop production in Los Angeles County remains healthy and on an even keel in most areas. Livestock and Poultry production decreased in 1990 as a result of increased pressure from urbanization and a reduction in ranchers.

E. Leon Spaugy
Agricultural Commissioner/
Director of Weights and Measures

Patrick Ryan, F.V.M., M.P.H.
Department of Health Services

*'It is a comfortable feeling to know that
you stand on your own ground. Land is
about the only thing that can't fly away.'*

Anthony Trollope 1815-1882

Cover design by Ray Smith





MILLION DOLLAR CROPS

1. Ornamental Trees and Shrubs	\$149,053,000	10. Dairy Cattle	4,165,000
2. Eggs	28,174,000	11. Ground Covers	4,091,000
3. Bedding Plants	16,585,000	12. Strawberries	3,643,000
4. Chickens	9,775,000	13. Indoor Flowering Plants	1,942,000
5. Dry Onions	9,700,000	14. Beef Cattle	1,924,000
6. Alfalfa Hay	6,782,000	15. Table Greens	1,774,000
7. Indoor Foliage Plant	6,460,000	16. Sweet Corn	1,319,000
8. Milk	5,682,000	17. Avocados	1,000,000
9. Peaches	4,849,000		

SUMMARY



<u>Commodity</u>	<u>1988</u>	<u>1989</u>	<u>1990</u>
Fruit and Nuts	\$10,620,500	\$10,100,800	\$11,287,000
Vegetable Crops	26,007,600	26,201,200	18,438,000
Nursery Products	167,289,000	180,478,000	181,040,000
Cut Flowers	2,970,900	1,293,100	1,659,000
Field Crops	9,133,500	7,351,600	8,350,000
Livestock and Poultry	60,789,500	63,268,100	18,285,000
Apiary, Livestock, and Poultry Products	<u>18,734,200</u>	<u>24,559,500</u>	<u>34,941,400</u>
Subtotal	\$295,545,200 *	\$313,252,300 *	274,000,400*
Forest Products	<u>27,000</u>	<u>308,700**</u>	<u>274,000</u>
Grand Total	\$295,572,200	\$313,561,000**	\$274,274,400

* Figures given are gross values. U.S.D.A. payments are not included.

** Revised figure

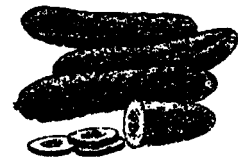


Fruit and Nut Crops

Crop	Year	Acreage	Production		Unit	Per Unit	Value		
			Per Acre	Total			Per Unit	Total	
Strawberries	1990	173	19.4	4,520	Ton	\$806	\$3,643,000		
	1989	216	17.4	3,758	Ton	\$736	\$2,765,900		
Peaches (Freestone)	1990	815 *	8.5	7,028	Ton	690	4,849,000		
	1989	800 *	9.0	7,200	Ton	780	5,616,000		
Avocados	1990	295	1.00	410	Ton	2,440	1,000,000		
	1989	90	0.50	45	Ton	2,031	91,400		
Misc.	1990	606	Includes pears, lemons, figs,					1,795,000	
	1989	512	and other fruits and nuts.					1,627,500	
TOTAL	1990	1,889 **					\$11,287,000		
	1989	1,618 **					\$10,100,800		

* Bearing acreage only.

** Includes non bearing peach acreage.



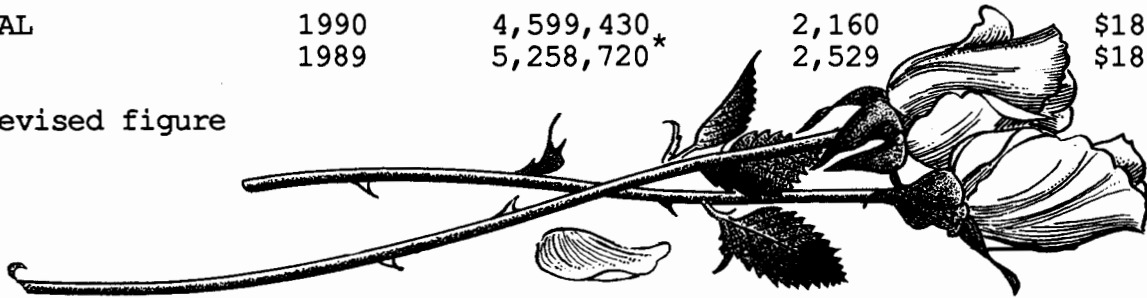
Vegetable Crops

Crop	Year	Acreage	Production		Unit	Per Unit	Value		
			Per Acre	Total			Per Unit	Total	
Dry Onions	1990	1,550	25	38,800	Ton	\$250.00	\$ 9,700,000		
	1989	1,675	27.0	45,225	Ton	\$280.00	\$12,663,000		
Table Greens	1990	383	Includes oriental specialties					1,774,000	
	1989	720	and leaf lettuce.					2,591,500	
Sweet Corn	1990	415	9.5	3,233	Ton	408	1,319,000		
	1989	290	5.75	1,668	Ton	433	722,200		
Vine Crops	1990	59	Includes squash, watermelons,					197,000	
	1989	53	and other melons.					126,900	
Root Vegetable	1990	220	Includes turnips, beets, and					798,000	
	1989	171	carrots					454,300	
Miscellaneous	1990	299	Includes radishes, parsley,					4,650,000	
	1989	645	mushrooms, herbs, and sprouts					5,711,200	
TOTAL	1990	2,926					\$18,438,000		
	1989	3,554					\$26,201,200		

Nursery Products

Item	Year	House Sq. Ft.	Field Acres	Total
Ornamental Trees and Shrubs	1990	2,487,000	1,760	\$149,053,000
	1989	2,415,700*	2,024	\$148,800,000
Bedding Plants	1990	886,000	117	16,585,000
	1989	1,008,000	113	19,100,000
Indoor Plants, Foliage	1990	299,000	25.7	6,460,000
	1989	570,000	40	2,515,000
Ground Covers	1990	693,000	33.6	4,091,000
	1989	899,150	68	4,495,000
Indoor Plants Flowering	1990	150,000	10.8	1,942,000
	1989	234,000	21	1,705,000
Miscellaneous	1990	84,430	213	2,909,000
	1989	131,870	263	3,863,000
Includes vegetable plants, orchids, cacti, and sod.				
TOTAL	1990	4,599,430	2,160	\$181,040,000
	1989	5,258,720*	2,529	\$180,478,000

* Revised figure



Cut Flowers and Decoratives

Item	Year	House Sq. Ft.	Field Acres	Quantity Sold	Unit Per Unit	Total
Christmas Trees	1990		140	30,200	Tree \$31.60	\$954,000
	1989		77	19,500	Tree \$30.25	\$589,900
Carnations (standard)	1990		6	976,425	Bloom .23	225,000
	1989	180,000	6	2,386,250	Bloom .18	429,500
Chrysanthemums	1990	12,000	2.8			149,000
	1989	0	3.5			2,200
Miscellaneous	1990	53,500	86	Includes <u>Strelitzia</u> ,		331,000
	1989	0	79.5	<u>Gypsophila</u> , and all other cut flowers.		271,500
TOTAL	1990	65,500	235			\$1,659,000
	1989	180,000	166			\$1,293,100

Field Crops

Crop	Year	Acreage	Production		Unit	Value	
			Per Acre	Total		Per Unit	Total
Alfalfa Hay	1990	6,211	8.00	53,400	Ton	\$127	\$6,782,000
	1989	6,300	8.00	50,400	Ton	\$125	\$6,300,000
Rangeland	1990	237,700					708,000
	1989	240,000					620,000
Barley	1990	486	2.00	1055	Ton	100	106,000
	1989	250	.25	63	Ton	50	3,100
Grain Hay	1990	900	2.50	2,250	Ton	95	214,000
	1989	1,100	2.50	2,750	Ton	90	247,500
Miscellaneous	1990	1,086 *	Includes irrigated pasture and				540,000
	1989	450 *	grazing privileges on stubble.				181,000
TOTAL	1990	8,683 **					\$8,350,000
	1989	8,100 **					\$7,351,600

* Excluding stubble.

** Excluding rangeland.



Forest Products

Item	Year	Production	Unit	Price	Value
Firewood	1990	968	Cord	\$30.00	\$29,000
	1989	2,000	Cord	\$15.00	\$30,000
Timber	1990	245,200	Board ft.	\$1.00	\$245,000
	1989	278,700 **	Board ft.	\$1.00	\$278,700
TOTAL	1990				\$274,000
	1989				\$308,700

* Figures obtained from Franchise Tax Board, represent harvested timber for lumber.

** Revised figure



Livestock and Poultry

Species	Year	Production	Total Live		Unit	Per Unit	Value		
			Weight				Total		
Chickens	1990	13,576,356	81,458,136		Lb.	\$.12	\$ 9,775,000		
	1989	22,904,146	118,061,559		Lb.	\$.35	\$41,321,500		
Horses	1990	Category discontinued							
	1989	29,853			Head	400		11,941,200	
Dairy Cattle	1990	3,204				1300		4,165,000	
	1989	4,210	42,100		Cwt.	120		5,052,000	
		Includes feeder calves and cull cows.							
Beef Cattle	1990	2,960			Head	650.00		1,924,000	
	1989	3,699			Head	532.00		1,967,868	
		Includes calves and heifers.							
Hogs	1990	5,953	8,930		Cwt.	58.40		522,000	
	1989	9,157	13,736		Cwt.	46.30		636,000	
Sheep	1990	6,490	9,735		Cwt.	21.00		204,000	
	1989	18,993	28,486		Cwt.	22.50		640,935	
Miscellaneous	1990	Includes ducks, rabbits, and						1,695,000	
	1989	goats.						1,745,600	
TOTAL	1990							\$18,285,000	
	1989							\$63,268,100	



Apiary, Livestock, and Poultry Products

Item	Year	Production	Unit	Per Unit	Total
Eggs	1990	42,051,129	Doz.	\$.67	\$28,174,000
	1989	27,424,000	Doz.	\$.66	\$18,099,800
Milk	1990	467,288	Cwt.	12.16	5,682,000
	1989	605,300	Cwt.	12.39	7,500,000
Pollination	1990	18,000	Hive	35.00	630,000
	1989	20,063		26.00	521,600
Honey	1990	635,900		.55	350,000
	1989	401,320		.61	244,800
Wool	1990	122,077		.83	101,000
	1989	138,373		1.38	191,000
Beeswax	1990	4,000	Lb.	1.10	4,400
	1989	4,000	Lb.	1.10	4,400
TOTAL	1990				\$34,941,400
	1989				\$26,561,600

County of Los Angeles Sustainable Agriculture Reporting

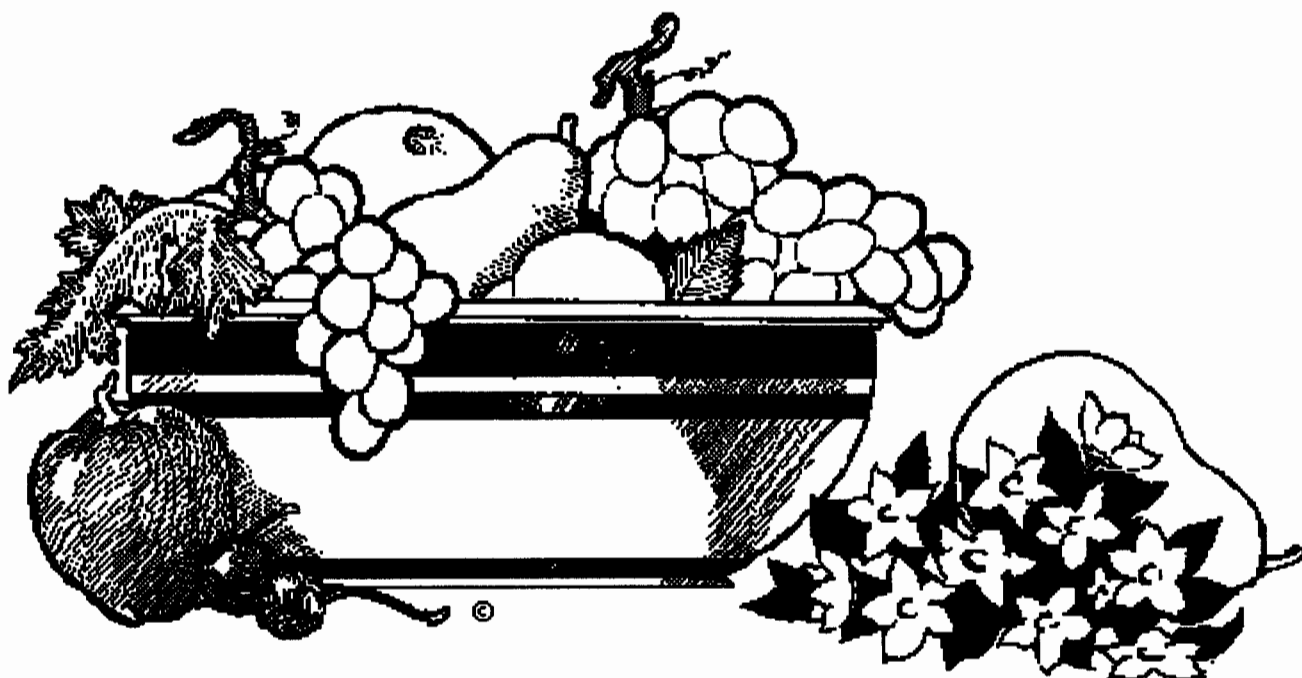
Organic Farming Statistics 1990

<u>Crop</u>	<u>Estimated Acres</u>	<u>Crop</u>	<u>Estimated Acres</u>
Asian pears	5	Herbs	34
Apples	4	Beans	5
Cherries	21	Tomatoes	2
Nectarines	5	Vegetables	2
Peaches	8	Vegetables (Oriental)	1
Pears	5	Lettuce (Specialty)	3

13 Commodities

7 Farms

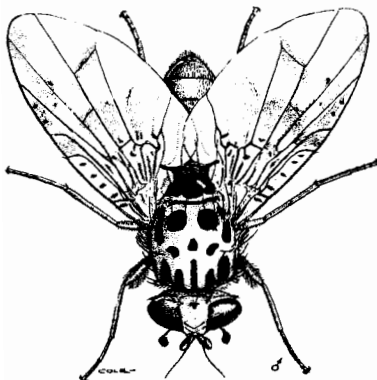
97 Acres



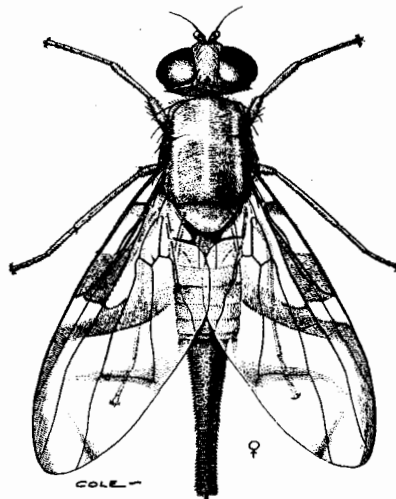
Pest Detection Activities

<u>Pest</u>	<u>Number of Pest Detection/Eradication Traps</u>	<u>Scope of Program</u>
Mediterranean Fruit Fly	200**/17,700	26 Detections
Mexican Fruit Fly	4,528/1,797	8 Detections
Oriental Fruit Fly	4,739/975	18 Detections
Melon Fruit Fly	2,211/653	1 Detection
Peach Fruit Fly	4,739/55	1 Detection
Gypsy Moth	3,071/400	3 Detections
Japanese Beetle	2,309/0	1 Detections 13 Detections (Los Angeles International Airport)
European Corn Borer	17/0	0
European Pine Shoot Moth	33/0	0
Khapra Beetle	556/0	0
TOTAL	17,664 Traps/21,580 Traps	71 Detections

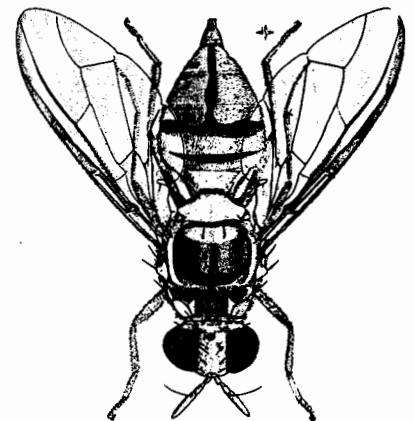
** CDFA placed out additional traps.



Mediterranean Fruit Fly



Mexican Fruit Fly



Oriental Fruit Fly

Pest Eradication Activities

<u>Pest</u>	<u>Method</u>	<u>Scope of Program</u>
Mediterranean Fruit Fly	Aerial Treatments Steriles Released Fruit Removal Reg./Soil/Bait Treatments Exclusion	105 Treatments/536 sq miles 5.25 Billion Released --- 3,008 Properties 954 sq miles/746,982 lbs Fruit Seized
Oriental Fruit Fly	Male Annihilation Treatments	24 Treatments
Melon Fruit Fly	None	-
Gypsy Moth	None	-
Peach Fruit Fly (Dacus zonatus)	None	-
Mexican Fruit Fly	Aerial Treatments Steriles Released Ground Bait Treatments	7 Treatments 338 Million Released 188 Treatments
Alligatorweed	Herbicide Treatment	23.52 Acres Treated
Halogeton	Mechanical Control	150 sq. ft. Treated

Biological Control Activities

<u>Pest</u>	<u>Agent/Mechanism</u>	<u>Scope of Program</u>
Ash White Fly	<u>Encarsia inaron</u> Parasitic wasp (Israeli strain)	22 Parasitoid Release Sites
Mediterranean Fruit Fly	(Steriles)	5.25 Billion Sterile Fruit Flies Released
Mexican Fruit Fly	(Steriles)	338 Million Sterile Fruit Flies Released

Pest Exclusion Activities

<u>Pest Exclusion Violations Issued</u>	<u>Number of Violations Issued</u>
Citrus Pests	45
Caribbean Fruit Fly	62
Cherry Fruit Fly	2
Sweet Potato Weevil	4
Peach Yellow/Red Suture	11
Nut Tree Pests	10
Ozonium Root Rot	14
European Corn Borer	5
Persimmon Root Borer	5
Plum Curculio/Apple, Blueberry Maggot	30
Burrowing Nematode	34
Corn/Sugarcane Borer	2
Walnut/Pecan Pests	10
Cedar Apple Rust	3
European Pine Shoot Moth	64
Peach Rosette Disease	2
Cereal Leaf Beetle	5
West Indian Sugarcane Root Borer	2
Japanese Beetle	9
Hydrilla	2
Soybean Cyst Nematode	6
Live Insect/No Permit	1
Gypsy Moth	1
Citrus Canker	7

Pest Exclusion Activities

<u>Pest Exclusion Violations Issued</u>	<u>Number of Violations Issued</u>
Imported Fire Ant	6
Infested/Presume Infested	533
Markings	149
Chestnut Bark/Oak Wilt Disease	2
Unauthorized Movement of Quarantine Hold	1
Failure to Hold Plant Material For Inspection	27
Foreign Fruits and Vegetables	2
Fruits and Vegetables From Hawaii	10
Tephritid Fruit Fly	2
Mediterranean Fruit Fly	3

Total	1,072



Pest Exclusion Activities

<u>Pest Intercepted</u> Common Name <u>Genus species</u>	<u>Material</u>	<u>Source</u> [*]	<u>Scope of Program Pest Interceptions</u>
Spiraling Whitefly <u>Aleurodicus dispersus</u>	Ti Leaves, Produce Nursery Stock	P.O./FX/LAX/NURS	85
Coconut Scale <u>Aspidiotus destructor</u>	Cut Flowers	LAX/NURS	5
Red Wax Scale <u>Ceroplastes rubens</u>	Produce, Cut Flowers Nursery Stock	FX/LAX/NURS	8
Florida Wax Scale <u>Ceroplastes floridensis</u>	Nursery Stock	NURS	2
Green Garden Looper <u>Chrysodeixis eriosoma</u>	Produce, Nursery Stock	LAX/NURS	4
Green Scale <u>Coccus viridis</u>	Cut Flowers	LAX	5
Slender Soft Scale <u>Coccus acutissimus</u>	Cut Flowers	LAX	1
Beetle Roach <u>Diploptera dytiscoides</u>	Cut Flowers	LAX	1
Leafhopper <u>Empoasca sp.</u>	Cut Flowers	LAX	1
Quack Grass <u>Agropyron repens</u>	Lawn Seed	NURS	1
Oriental Scale <u>Aonidiella orientalis</u>	Nursery Stock	NURS	2
Snail "B" Rated <u>Bradybaena similaris</u>	Nursery Stock	LAX/NURS	7
Soil Mealybug <u>Geococcus coffeae</u>	Nursery Stock	NURS	1
Mining Scale <u>Howardia biclavis</u>	Nursery Stock	P.O./FX/NURS	9
Acuminate Scale <u>Kilifia acuminata</u>	Cut Flowers	LAX	2

Pest Exclusion Activities

<u>Pest Intercepted</u>	<u>Material</u>	<u>Source*</u>	<u>Scope of Program</u>
Common Name <u>Genus species</u>			Pest <u>Interceptions</u>
Carpenter Ant <u>Camponotus abdominalis floridanus</u>	Nursery Stock	NURS	1
An Ant "Q" Rated <u>Brachymermymx sp.</u>	Nursery Stock	NURS	1
Little Fire Ant <u>Ochetomyrmex auropunctata</u>	Nursery Stock	NURS	1
Tropical Palm Scale <u>Hemiberlesia palmae</u>	Nursery Stock	NURS	1
An Armyworm <u>Spodoptera sp.</u>	Live Plants	LAX	1
Canada Thistle <u>Cirsium arvense</u>	Seed	NURS	1
A Slug "Q" Rated <u>Philomycus sp.</u>	Nursery Stock	NURS	2
Barnacle Scale <u>Ceroplastes cirripidiformis</u>	Cut Flowers	LAX	1
Purple Mustard <u>Chorispora tenella</u>	Grass Seed	NURS	2
A Lygaeid Bug <u>Ischnodemus sp.</u>	Cut Flowers	LAX	1
Black Thread Scale <u>Ischnaspis longirostris</u>	Cut Flowers	LAX	1
Serrated Tussock <u>Nassella trichotoma</u>	Seed	TRUCK	1
A Slug "Q" Rated <u>Veronicella sp.</u>	Cut Flowers	LAX	3
A Snail "Q" Rated <u>Subulina octona</u>	Nursery Stock	NURS	2
A Scale "Q" Rated <u>Opuntiaspis carinata</u>	Nursery Stock	NURS	1

Pest Exclusion Activities

<u>Pest Intercepted</u> Common Name <u>Genus species</u>	<u>Material</u>	<u>Source</u> *	<u>Scope of Program</u> Pest <u>Interceptions</u>
A Snail "Q" Rated <u>Opeas sp.</u>	Cut Flowers	LAX	1
Orchid Weevil <u>Orchidophilus sp.</u>	Cut Flowers	LAX	1
Big Headed Ant <u>Pheidole megacephala</u>	Cut Flowers	P.O./LAX	9
Sansevieria Scale <u>Parlatoria proteus</u>	Nursery Stock	NURS	2
Boxwood Scale <u>Pinnaspis buxi</u>	Nursery Stock	LAX/NURS	12
Lesser Snow Scale <u>Pinnaspis strachani</u>	Nursery Stock	P.O./FX/LAX/NURS	91
Lycopodium Mealybug <u>Pseudococcus nr. lycopodii</u>	Lycopodium	P.O./FX/LAX	17
Green Shield Scale <u>Pulvinaria psidii</u>	Ginger leaf, Ti Leaf	LAX/NURS	52
Elisae mealybug <u>Pseudococcus elisae</u>	Cut Flowers	LAX/NURS	2
Magnolia White Scale <u>Pseudaulacaspis cockerelli</u>	Nursery Stock Produce, Cut Flowers	LAX/NURS	217
Palm Scale <u>Palmicultor palmarum</u>	Cut Flowers	LAX/NURS	2
Torpedo Bug <u>Siphanta acuta</u>	Ti leaves	LAX/NURS	2
Red Imported Fire Ant <u>Solenopsis invicta</u>	Nursery Stock	NURS/TRUCK	7
An Ant "Q" Rated <u>Technomyrex albipes</u>	Cut Flowers, Produce	LAX	5
Papaya Fruit Fly <u>Toxotrypana curvicauda</u>	Produce	MARKET	1

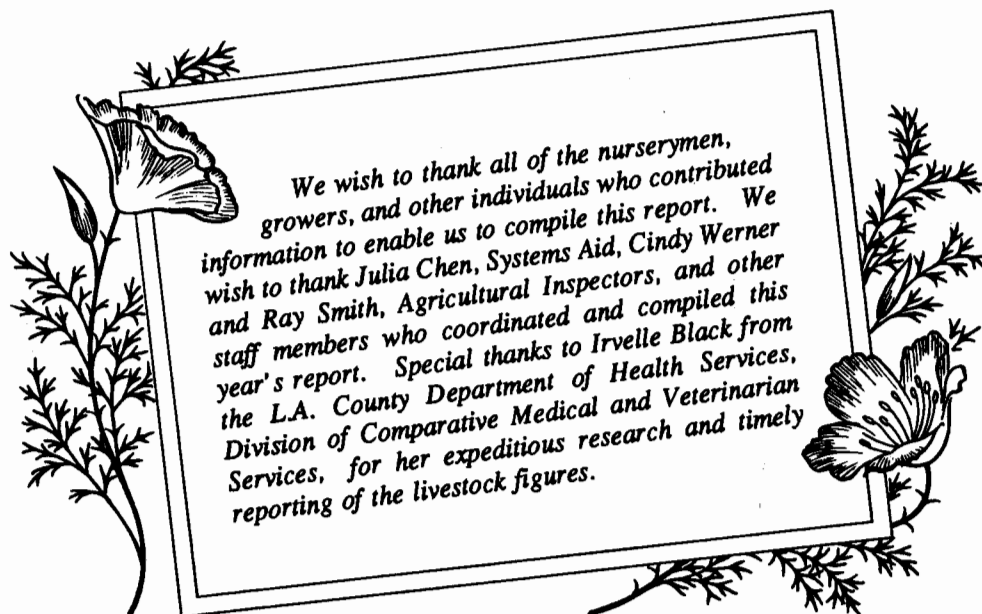
Pest Exclusion Activities

<u>Pest Intercepted</u> Common Name <u>Genus species</u>	<u>Material</u>	<u>Source</u> *	<u>Scope of Program</u> Pest <u>Interceptions</u>
An Ant "Q" Rated <u>Tapinoma melanocephalum</u>	Cut Flowers	LAX	2
A Slug "Q" Rated <u>Veronicella leydigi</u>	Produce	LAX/NURS	3
A Leafhopper <u>Sophonia rubifasciata</u>	Cut Flowers, Produce, Nurs Stock	FX/LAX/NURS	5
A Scale "Q" Rated <u>Philephedra tuberculosa</u>	Nursery Stock	NURS	1
Bag Worm <u>Thyridopteryx ephemeraeformis</u>	Nursery Stock	NURS	1
Burrowing Nematode <u>Radopholus similis</u>	Nursery Stock	NURS	1
A Snail "Q" Rated <u>Zachrysia provisorica</u>	Nursery Stock	LAX/NURS	7
A Longhorn Beetle <u>Sybra alternans</u>	Produce (Herbs)	LAX	1
Croton Whitefly <u>Orchamoplatus mammaeferus</u>	Cut Flowers	LAX	1
A Beetle "Q" Rated <u>Anomala sp.</u>	Nursery Stock	HOMEOWNER	1
A Weevil "Q" Rated <u>Oxydema sp.</u>	Nursery Stock	NURS	1
Coccidae Family "Q" Rated Scale	Produce	LAX	1
Fulgoridae Family "Q" Rated Torpedo Bug	Cut Flowers	LAX	1
Muscidae Family "Q" Rated Fly	Nursery Stock	NURS	1
Microlepidoptera "Q" Rated Micromoths	Cut Flowers	LAX	1

Pest Exclusion Activities

<u>Pest Intercepted</u> Common Name <u>Genus species</u>	<u>Material</u>	<u>Source</u> *	<u>Scope of Program</u> Pest <u>Interceptions</u>
Nirvaninae Subfamily A Leafhopper	Ti Leaves	LAX	1
Typhlocybinae Subfamily A Leafhopper Nymph	Produce	LAX	1
Pseudococcidae Family "Q" Rated Mealybug	Cut Flowers	P.O./LAX/NURS	4
Tortricidae Family "Q" Rated Moth Larva	Produce	LAX	1
Tettigonidae Family "Q" Rated Katydid Eggs	Cut Flowers	LAX	1
Typhlobycinae Family "Q" Rated leafhopper	Cut Flowers	P.O./LAX	2
Noctuidae Family "Q" Rated Moth	Cut Flowers	LAX	1
Unknown Eggs (insect)	Cut Flowers	LAX	1
Total			----- 615

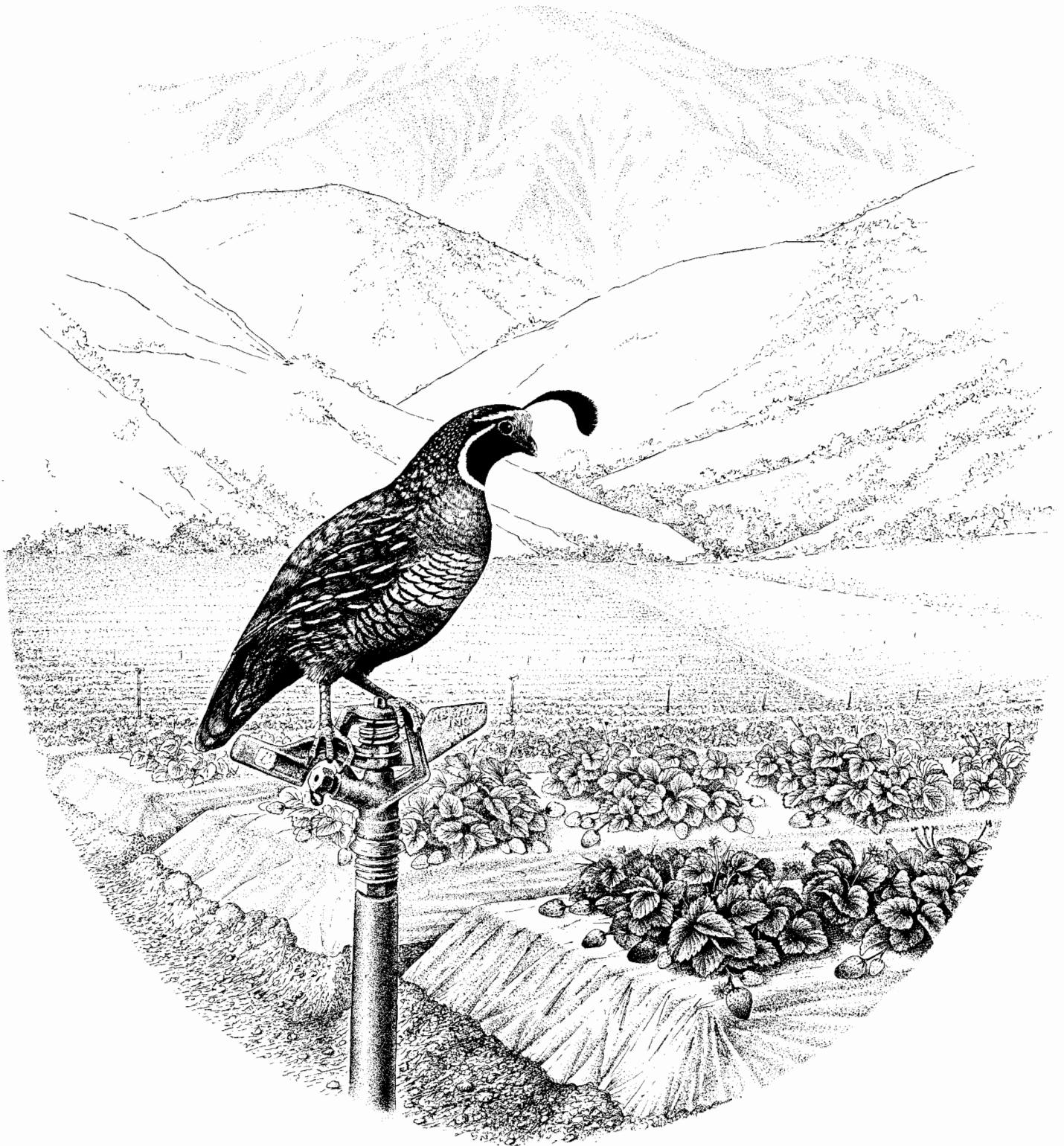
*Source: P.O. = Post Office, FX = Federal Express
LAX = Los Angeles International Airport
NURS = Nurseries



***Los Angeles County Agricultural Commissioner/
Weights & Measures Department
3400 La Madera Avenue
El Monte, California 91732***



1991 Crop and Livestock Report



County of Los Angeles
Agricultural Commissioner/Weights & Measures Department



E. Leon Spaugy
Agricultural Commissioner/
Director of Weights and Measures

COUNTY OF LOS ANGELES

Department of
Agricultural Commissioner
and Weights and Measures

3400 La Madera Avenue
El Monte, California 91732

William A. Edwards
Chief Deputy

1991 CROP AND LIVESTOCK REPORT

Los Angeles County agriculture continued to hold its own in spite of the very tough economic and drought conditions of 1991. Gross production decreased slightly from the revised 1990 gross figure of \$238,027,400 down to \$235,867,000 for 1991.

Fruit and Nut crops showed an increase of \$1,233,000, up by 11%. This was attributed to the "March Miracle" of heavy spring rains, favorable growing conditions and increased berry acreage along with good market prices. Vegetable crops, likewise, increased markedly over the 1990 season with gross returns up \$4,626,000, an increase of 25%. Ideal weather during the onion growing season combined with a strong market was a major factor in this increase.

Nursery Products is the largest cash crop in Los Angeles County. Production turned slightly downward, losing \$6,449,000 from 1990. The recession economy, slow housing starts, drought and higher water bills all contributed to this 4% decrease. Cut flowers increased by \$904,000, representing a 54% increase over the previous year. This major increase was the result of additional Christmas tree acreage and corresponding sales. The general trend for cut flowers was increased profits.

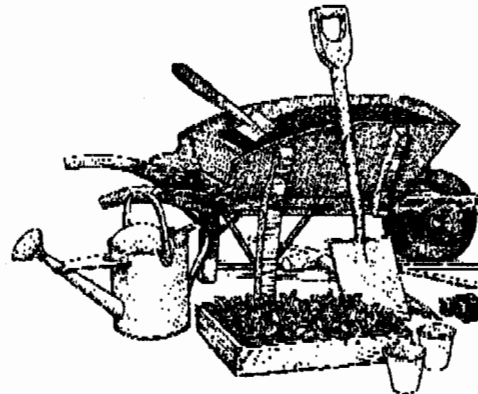
Field Crops dipped by \$984,000, down 12%, as a result of low hay prices and decreased dryland grain plantings due to the continuing drought. Apiary production soared with one of its best years. Honey production revenue was up by \$1,240,000 representing an increase of 354% over the previous year. Heavy spring rains and abundant forage for the bees made for ideal production conditions.

Despite economic conditions and the continuing drought, Los Angeles County Agriculture remains stable and continues to show strength. Overall, areas of decreased production were offset by increased production in others.

E. Leon Spaugy
Agricultural Commissioner/
Director of Weights and Measures

"Genius will live and thrive without training, but it does not the less reward the watering-pot and pruning-knife."

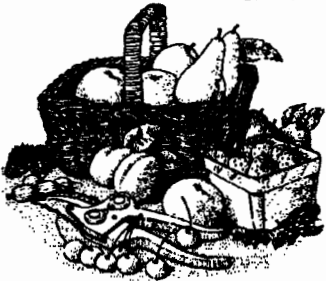
Margaret Fuller Ossoli 1810-1850



The Department would like to recognize and thank Raymond Smith for sharing his talent to create this year's distinctive and professional pen-and-ink cover art. Ray has volunteered many hours drawing the beautiful crop report covers for the past three years.

MILLION DOLLAR CROPS

1. Ornamental Trees and Shrubs	\$113,521,000	9. Ground Cover	3,624,000
2. Bedding Plants	22,395,000	10. Dairy Cattle	3,482,000
3. Dry Onions	13,182,000	11. Christmas Trees	1,591,000
4. Alfalfa Hay	5,556,000	12. Honey	1,590,000
5. Peaches	5,448,000	13. Table Greens	1,451,000
6. Milk	5,328,000	14. Beef Cattle	1,262,000
7. Strawberries	4,637,000	15. Sweet Corn	1,216,000
8. Indoor Plants, Foliage	4,125,000	16. Eggs	1,071,000



SUMMARY

Commodity	1989	1990	1991
Fruit & Nuts	\$10,287,400 *	\$11,287,000	\$12,520,000
Vegetable Crops	26,201,200	18,438,000	23,064,000
Nursery Products	180,478,000	181,040,000	174,591,000
Cut Flowers	1,293,100	1,659,000	2,563,000
Field Crops	7,351,600	8,350,000	7,366,000
Livestock and Poultry	63,268,100	8,946,000 *	6,650,000
Apiary, Livestock, and Poultry Products	26,561,000 *	8,033,400 *	8,903,000 +
Subtotal	<u>\$315,441,000 *</u>	<u>\$237,753,400 *</u>	<u>\$235,657,000</u>
Forest Products	308,700	274,000	210,000
Grand Total	<u>\$315,749,700 *</u>	<u>\$238,027,400 *</u>	<u>\$235,867,000</u>

* Revised figure

+ Does not include wool total

Figures given are gross values. U.S.D.A. payments are not included.



Fruit and Nut Crops

Crop	Year	Acreage	Production		Unit	Per Unit	Value	
			Per Acre	Total			Per Unit	Total
Strawberries	1991	203	29.90	6,070	Ton	\$764	\$4,637,000	
	1990	173	26.13 *	4,520	Ton	\$806	\$3,643,000	
Peaches (Freestone)	1991	705	12.00	8,460	Ton	644	5,448,000	
	1990	815	8.62 *	7,028	Ton	690	4,849,000	
Avocados	1991	250	.94	235	Ton	1,391	327,000	
	1990	295	1.40 *	413 *	Ton	2,421*	1,000,000	
Cherries	1991	140	.80	112	Ton	1,700	190,000	
Miscellaneous	1991	424						1,918,000
	1990	606	Includes citrus, nectarines, and other fruits and nuts.					1,795,000
TOTAL	1991	1,722						\$12,520,000
	1990	1,889						\$11,287,000

* Revised Figure



Vegetable Crops



Crop	Year	Acreage	Production		Unit	Per Unit	Value	
			Per Acre	Total			Per Unit	Total
Dry Onions	1991	1,690	30	50,700	Ton	\$260	\$13,182,000	
	1990	1,550	25	38,800	Ton	\$250	\$9,700,000	
Sweet Corn	1991	360	8.20	2,952	Ton	412	1,216,000	
	1990	415	7.79*	3,233	Ton	408	1,319,000	
Table Greens	1991	405						1,451,000
	1990	383	Includes oriental specialties and leaf lettuce.					1,774,000
Vine crops	1991	133						368,000
	1990	59	Includes squash, watermelons, and other melons.					197,000
Root Vegetables	1991	53	Includes turnips, beets, and carrots.					166,000
	1990	220						798,000
Miscellaneous	1991	342	Includes radishes, parsley, mushrooms, herbs, & sprouts.					6,681,000
	1990	299						4,650,000
TOTAL	1991	2,983						\$23,064,000
	1990	2,926						\$18,438,000

Nursery Products

Item	Year	House Sq. Ft.	Field Acres	Total
Ornamental Trees and Shrubs	1991	4,306,000	1,847	\$113,521,000
	1990	2,487,000	1,760	\$149,053,000
Bedding Plants	1991	284,000	163	22,395,000
	1990	886,000	117	16,585,000
Indoor Plants Foliage	1991	633,000	2.2	4,125,000
	1990	299,000	25.7	6,460,000
Ground Covers	1991	744,000	26.5	3,624,000
	1990	693,000	33.6	4,091,000
Indoor Plants Flowering	1991	345,000	10.0	499,000
	1990	150,000	10.8	1,942,000
Miscellaneous	1991	108,000	995	30,427,000
	1990	84,430	213	2,909,000
Includes vegetables plants, orchids, cacti, and sod				
TOTAL	1991	6,420,000	3,043.7	\$174,591,000
	1990	4,599,430	2,160.0	\$181,040,000

Cut Flowers and Decoratives

Item	Year	House Sq. Ft.	Field Acres	Quantity Sold	Unit	Per Unit	Value Total
Christmas Trees	1991		233	51,995	Tree	\$30.60	\$1,591,000
	1990		140	30,200	Tree	\$31.60	\$ 954,000
Carnations (standard)	1991		6	1,274,500	Bloom	.22	280,000
	1990		6	976,425	Bloom	.23	225,000
Chrysanthemums	1991	167,000	.75				155,000
	1990	167,000*	0*				149,000
Miscellaneous	1991	26,840	90				537,000
	1990	19,800*	87*				331,000
					Includes <u>Strelitzia</u> , <u>Gypsophila</u> , and all other cut flowers.		
TOTAL	1991	193,840	329.75				\$2,563,000
	1990	186,800*	233 *				\$1,659,000

* Revised Figure

Field Crops

Crop	Year	Acreage	Production		Unit	Value		
			Per Acre	Total		Per Unit	Total	
Alfalfa Hay	1991	5,768	8.6	49,605	Ton	\$112	\$5,556,000	
	1990	6,211	8.6+	53,400	Ton	\$127	\$6,782,000	
Grain Hay	1991	950	1.8	1,710	Ton	85	145,000	
	1990	900	2.5	2,250	Ton	95	214,000	
Barley	1991	See Miscellaneous						
	1990	486	2.17+	1,055	Ton	100	106,000	
Miscellaneous	1991	1,756*	Includes irrigated pasture and grazing privileges on stubble					710,000
	1990	1,086*						540,000
Rangeland	1991	381,000						955,000
	1990	237,700						708,000
TOTAL	1991	8,474**						\$7,366,000
	1990	8,683**						\$8,350,000

* Excluding stubble.

** Excluding rangeland.

+ Revised Figure

Forest Products

Item	Year	Production	Unit	Price	Value
Firewood	1991	498	Cord	\$30.00	\$15,000
	1990	968	Cord	\$30.00	\$29,000
Timber	1991	Miscellaneous Products			195,000
	1990				245,000
TOTAL	1991				\$210,000
	1990				\$274,000

* Figures obtained from State Board of Equalization, Timber Tax System.

Field Crops

Crop	Year	Acreage	Production		Unit	Value		
			Per Acre	Total		Per Unit	Total	
Alfalfa Hay	1991	5,768	8.6	49,605	Ton	\$112	\$5,556,000	
	1990	6,211	8.6+	53,400	Ton	\$127	\$6,782,000	
Grain Hay	1991	950	1.8	1,710	Ton	85	145,000	
	1990	900	2.5	2,250	Ton	95	214,000	
Barley	1991	See Miscellaneous						
	1990	486	2.17+	1,055	Ton	100	106,000	
Miscellaneous	1991	1,756*	Includes irrigated pasture and grazing privileges on stubble					710,000
	1990	1,086*						540,000
Rangeland	1991	381,000						955,000
	1990	237,700						708,000
TOTAL	1991	8,474**						\$7,366,000
	1990	8,683**						\$8,350,000

* Excluding stubble.

** Excluding rangeland.

+ Revised Figure

Forest Products

Item	Year	Production	Unit	Price	Value
Firewood	1991	498	Cord	\$30.00	\$15,000
	1990	968	Cord	\$30.00	\$29,000
Timber	1991	Miscellaneous Products			195,000
	1990				245,000
TOTAL	1991				\$210,000
	1990				\$274,000

* Figures obtained from State Board of Equalization, Timber Tax System.

Livestock and Poultry

Species	Year	Production	Total Live Weight	Unit	Value		
					Per Unit	Total	
Chickens	1991	1,007,568 *	5,037,840	Lb.	.03+	\$151,000	
	1990	1,454,559	7,272,795 *	Lb.	.06 *	\$436,000 *	
Dairy Cattle	1991	2,854		Head	1,220	3,482,000	
	1990	3,204		Head	1,300	4,165,000	
Includes feeder calves & cull cows							
Beef Cattle	1991	2,812	19,684	Cwt.	64.10	1,262,000	
	1990	2,960		Head	650.00	1,924,000	
Includes calves & heifers							
Hogs	1991	2,855	4,283	Cwt.	57.90	248,000	
	1990	5,953	8,930	Cwt.	58.40	522,000	
Sheep	1991	5,623	8,435	Cwt.	17.90	151,000	
	1990	6,490	9,735	Cwt.	21.00	204,000	
Miscellaneous	1991	Includes ducks, rabbits, and goats					1,356,000
	1990						1,695,000
Total	1991						\$6,650,000
	1990						\$8,946,000 *

* Revised figure + 1991 Preliminary figure, California Agricultural Statistics Service

Apiary, Livestock, and Poultry Products

Item	Year	Production	Unit	Value		
				Per Unit	Total	
Honey	1991	3,179,500	Lb.	.50	\$1,590,000	
	1990	635,900	Lb.	.55	\$350,000	
Pollination	1991	27,000	Hive	33.50	904,000	
	1990	18,000	Hive	35.00	630,000	
Beeswax	1991	10,000	Lb.	1.00	10,000	
	1990	4,000	Lb.	1.10	4,400	
Milk	1991	471,069	Cwt.	11.31	5,328,000	
	1990	467,288	Cwt.	12.16	5,682,000	
Wool	1991	112,872	Lb.	Not Available	Not Available	
	1990	122,077	Lb.	.83	101,000	
Eggs	1991	1,575,000 *	Doz.	.68	1,071,000 *	
	1990	1,890,000	Doz.	.67	1,266,000 +	
Total	1991					\$8,903,000 *
	1990					\$8,033,400



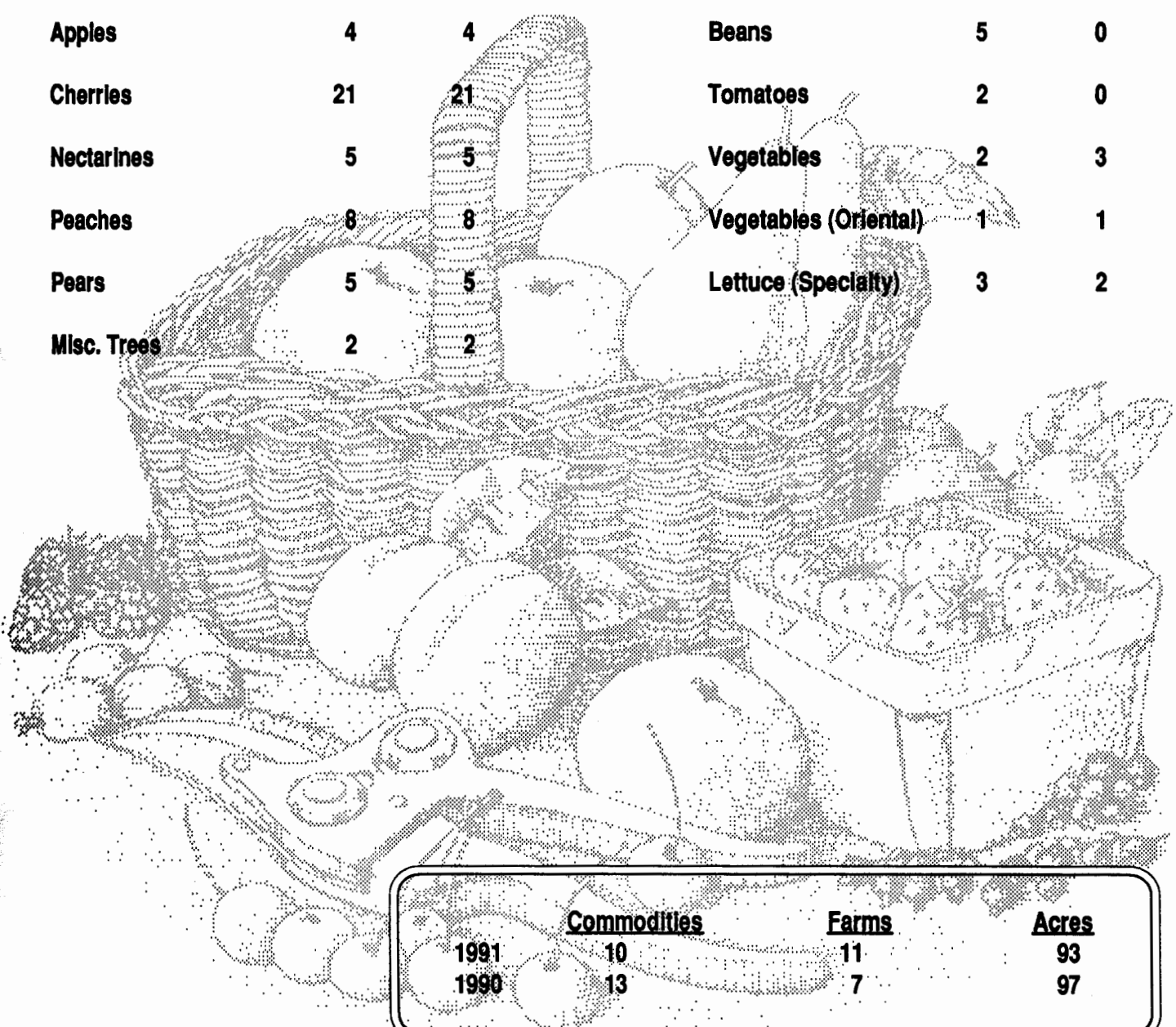
+ Doesn't include wool total * Revised Figure

County of Los Angeles

Sustainable Agriculture Reporting

Organic Farming Statistics 1991

Crop	Estimated Acres		Crop	Estimated Acres	
	1990	1991		1990	1991
Asian pears	5	5	Herbs	34	37
Apples	4	4	Beans	5	0
Cherries	21	21	Tomatoes	2	0
Nectarines	5	5	Vegetables	2	3
Peaches	8	8	Vegetables (Oriental)	1	1
Pears	5	5	Lettuce (Specialty)	3	2
Misc. Trees	2	2			

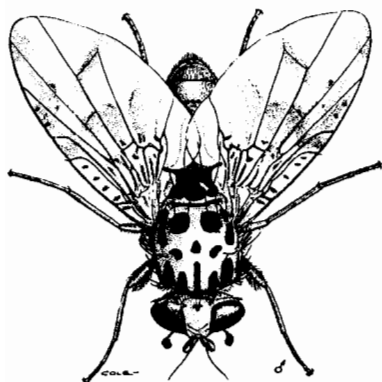


	<u>Commodities</u>	<u>Farms</u>	<u>Acres</u>
1991	10	11	93
1990	13	7	97

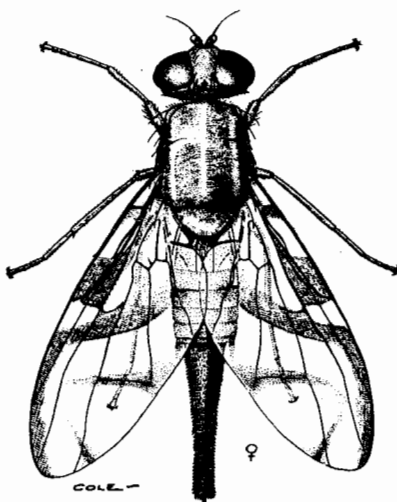
Pest Detection Activities

Pest	Number of Traps		Scope of Programs
	Pest Detection	Pest Eradication	
Mediterranean Fruit Fly	9,223	12,523	26 Detections
Mexican Fruit Fly	4,824	2,253	19 Detections
Oriental Fruit Fly	4,924	221	21 Detections
Melon Fruit Fly	4,730	0	0 Detections
Guava Fruit Fly	4,924	23	1 Detection
Gypsy Moth	3,161	300	1 Detection
Japanese Beetle	2,398	168	5 Detections (Los Angeles International Airport)
European Corn Borer	17	0	0 Detections
European Pine Shoot Moth	32	0	0 Detections
Khapra Beetle	482	0	0 Detections
TOTAL	34,715	15,488	73 Detections

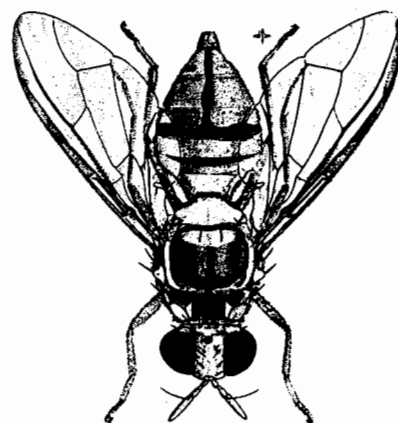
** CDFA places out additional traps.



Mediterranean Fruit Fly



Mexican Fruit Fly



Oriental Fruit Fly

Pest Eradication Activities

Pest	Method	Scope of Program
Mediterranean Fruit Fly	Steriles Released Reg./Soil/Bait Treatments Exclusion - Quarantine	168.5 Million Released 4,046 Properties 46 Sq. Miles/8,210 Lbs. Fruit Seized
Oriental Fruit Fly	Male Annihilation Treatments	4 Treatment Areas
Mexican Fruit Fly	Steriles Released Bait Treatments	25.5 Million Released 3,982 Treatments
Alligatorweed	Foliar Exclusion -Quarantine Herbicide Treatment	59 Sq. Miles 15.5 Acres Treated
Halogeton	Mechanical Control	50 Sq. Ft. Treated

Biological Control Activities

Pest	Agent/Mechanism	Scope of Programs
Ash Whitefly	<u>Encarsia inaron</u> Parasitic wasp (Israeli strain)	155 Parasitoid Release Sites
Mediterranean Fruit Fly	(Steriles)	168.5 Million Sterile Fruit Flies Released
Mexican Fruit Fly	(Steriles)	25.5 Million Sterile Fruit Flies Released

Pest Exclusion Activities

Pest Exclusion Violations Issued	Number of Violations Issued
Citrus Pests	41
Caribbean Fruit Fly	88
Cherry Fruit Fly	4
Sweet Potato Weevil	6
Peach Yellow/Red Suture	4
Nut Tree Pests	1
Ozonium Root Rot	22
European Corn Borer	21
Plum Curculio/Apple, Blueberry Maggot	69
Burrowing Nematode	30
Corn/Sugarcane Borer	3
Walnut/Pecan Pests	12
Cedar Apple Rust	14
European Pine Shoot Moth	2
Peach Rosette Disease	1
Cereal Leaf Beetle	15
West Indian Sugarcane Root Borer	3
Japanese Beetle	17
Hydrilla	1
Soybean Cyst Nematode	19
Citrus Canker	37
Imported Fire Ant	5
Infested/Presume Infested	514
Markings	119
Chestnut Bark/Oak Wilt Disease	4
Failure to Hold Plant Material For Inspection	111
Foreign Fruits and Vegetables	12
Fruits and Vegetables From Hawaii	4
Total	1,179

Pest Exclusion Activities

<u>Pest Intercepted</u> Common Name <u>Genus species</u>	<u>Material</u>	<u>Source*</u>	<u>Scope of Program Pest Interceptions</u>
Giant African Snail <u>Achatina fulica</u>	Taro Leaves	LAX	1
Chinese Rose Beetle <u>Adoretus sininus</u>	Basil	LAX	1
Black Whitefly <u>Aleurocathus prob woglumi</u>	Kaffir Lime Leaves	TRUCK	1
Spiraling Whitefly <u>Aleurodicus dispersus</u>	Ti Leaves, Produce Nursery Stock	P.O./FX/LAX/NURS	36
A Whitefly <u>Aleurotrachelus sp.</u>	Ficus	NURS/TRUCK	1
A Leafroller <u>Amorbia sp.</u>	Basil	LAX	1
Oriental Beetle <u>Anomala orientalis</u>	Ti	TRUCK	1
Ant <u>Anoplolepis longipes</u>	Cut Foliage	LAX	3
Coconut Scale <u>Aspidiotus destructor</u>	Cut Flowers	LAX/NURS	8
Oriental Fruit Fly <u>Batrocera dorsalis</u>	Inside Box; Herbs	LAX	1
Snail "B" Rated <u>Bradybaena similaris</u>	Nursery Stock	LAX/NURS	18
Carpenter Ant <u>Camponotus sp.</u>	Nursery Stock	NURS	1
Florida Wax Scale <u>Ceroplastes floridensis</u>	Nursery Stock	NURS	2

Pest Exclusion Activities

<u>Pest Intercepted</u> Common Name <u>Genus species</u>	<u>Material</u>	<u>Source*</u>	<u>Scope of Program</u> Pest <u>Interceptions</u>
Red Wax Scale <u>Ceroplastes rubens</u>	Produce, Cut Flowers Nursery Stock	FX/LAX/NURS	2
Green Garden Looper <u>Chrysodeixis eriosoma</u>	Produce, Nursery Stock	LAX/NURS	15
Leafhopper Larva Cicadellidae Family	Ti	LAX	1
Scale "Q" Rated Coccidae Family	Produce	LAX	1
Green Scale <u>Coccus viridis</u>	Cut Flowers	LAX	2
Slender Soft Scale <u>Coccus acutissimus</u>	Cut Flowers	LAX	5
Longhorned Beetle <u>Curtomerus pilicornis</u>	Basil	LAX	1
Sweet Potato Weevil <u>Cylas formicarius</u>	Sweet Potato	SUPERMARKET	6
Schefflera Whitefly <u>Dialeurodes</u> sp.	Cut Flowers	LAX	1
Male Armored Scale Diaspididae Family	Longan	SUPERMARKET	1
Scarab Beetle Dynastinae Subfamily	Chrysalidocarpus	TRUCK	1
Leafhopper <u>Empoasca</u> sp.	Cut Flowers	LAX	1
Looper Geometridae Family	Mint	LAX	1

Pest Exclusion Activities

<u>Pest Intercepted</u> Common Name Genus species	<u>Material</u>	<u>Source*</u>	<u>Scope of Program</u> Pest Interceptions
Leafhopper Gyponinae Subfamily	Basil	LAX	1
A Snail Helicidae Family	Thyme	LAX	1
Mining Scale <u>Howardia biclavis</u>	Nursery Stock	P.O./FX/NURS	23
Acuminate Scale <u>Kilifia acuminata</u>	Cut Flowers	LAX	1
A Mealybug <u>Maconellicoceus birsutus</u>	Nephelum	SUPERMARKET	1
Micromoths "Q" Rated Microlepidoptera Order	Cut Flowers	LAX	1
A Bug Miridae Family	Basil	LAX	1
Southern Green Stink Bug <u>Nezara viridula</u>	Lalot	LAX	3
Little Fire Ant <u>Ochetomyrmex auropunctata</u>	Nursery Stock	NURS	1
Mirid Bug <u>Orthotylus</u> sp.	Orchid	LAX	2
A Weevil "Q" Rated <u>Oxydema</u> sp.	Nursery Stock	NURS	1
Sansevieria Scale <u>Parlatoria proteus</u>	Cycas	NURS	2
Big Headed Ant <u>Pheidole megacephala</u>	Cut Flowers	P.O./LAX	18

Pest Exclusion Activities

<u>Pest Intercepted</u> Common Name <u>Genus species</u>	<u>Material</u>	<u>Source*</u>	<u>Scope of Program</u> Pest <u>Interceptions</u>
Boxwood Scale <u>Pinnaspis buxi</u>	Nursery Stock	LAX/NURS	3
Lesser Snow Scale <u>Pinnaspis strachani</u>	Nursery Stock	P.O./FX/LAX/NURS	17
A Looper Plusiinae Subfamily	Basil	LAX	1
Bug Eggs poss Hemiptera Order	Cut Flowers	LAX	1
A Snail poss <u>Monacha</u> sp.	Rosemary	LAX	1
Leafhopper Eggs poss Cicadellidae Family	Nursery Stock	LAX	2
Magnolia White Scale <u>Pseudaulacaspis cockerelli</u>	Nursery Stock Produce, Cut Flowers	LAX/NURS	151
Elisae Mealybug <u>Pseudococcus elisae</u>	Cut Flowers	LAX/NURS	7
Mealybug "Q" Rated Pseudococcidae Family	Cut Flowers	P.O./LAX/NURS	2
Lycopodium Mealybug <u>Pseudococcus</u> nr. <u>lycopodii</u>	Lycopodium	P.O./FX/LAX	11
Green Shield Scale <u>Pulvinaria psidii</u>	Ginger Leaves Ti Leaves	LAX/NURS	32
A Moth <u>Pyrausta</u> sp.	Basil	LAX	1
Hibiscus Mealybug <u>Rhizoecus hibisci</u>	Rhapis	LAX	1

Pest Exclusion Activities

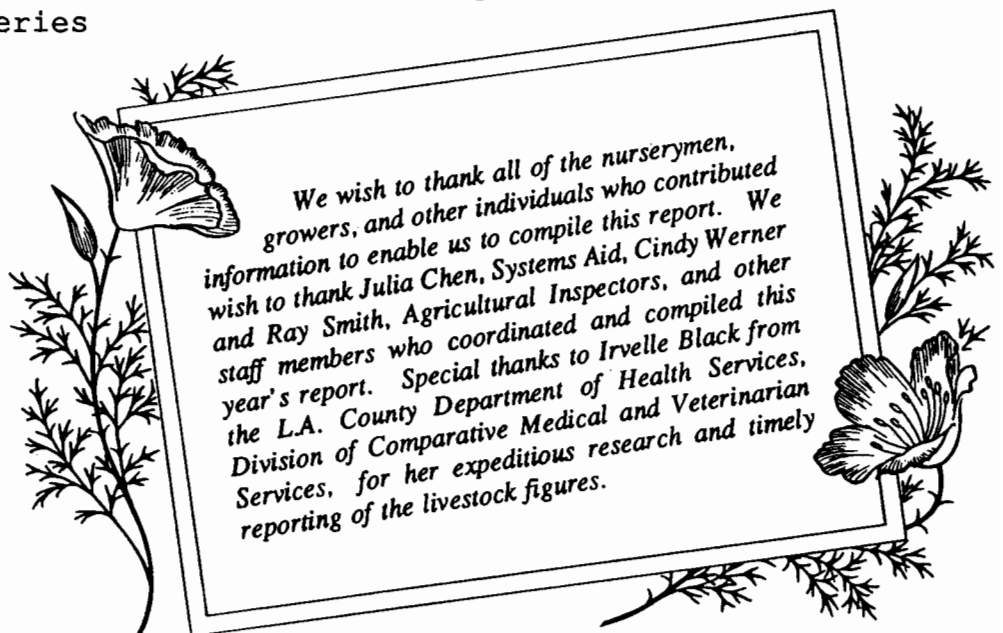
<u>Pest Intercepted</u> Common Name Genus species	<u>Material</u>	<u>Source*</u>	<u>Scope of Program</u> Pest Interceptions
Torpedo Bug <u>Siphanta acuta</u>	Ti Leaves	LAX/NURS	2
Fire Ant <u>Solenopsis</u> sp.	Cut Flowers	LAX	1
Red Imported Fire Ant <u>Solenopsis invicta</u>	Nursery Stock, Hen Eggs, Wooden Pallets	NURS/TRUCK	7
Moth Larva <u>Spodoptera</u> poss. <u>latifascia</u>	Thyme	LAX	1
A Leafhopper <u>Sophonia rubifascia</u>	Nursery Stock, Produce, Cut Flowers	FX/LAX/NURS	20
A Longhorn Beetle <u>Sybra alternans</u>	Produce (Herbs)	LAX	5
An Ant "Q" Rated <u>Tapinoma melanocephalum</u>	Cut Flowers	LAX	2
An Ant "Q" Rated <u>Technomyrex albipes</u>	Cut Flowers, Produce	LAX	5
A Katydid "Q" Rated Tettigonidae Family	Cut Flowers	LAX	2
Thrips (larvae) Thysanoptera Order	Orchid	LAX	1
A Slug <u>Veronicella floridana</u>	Schefflera	TRUCK	1
A Slug "Q" Rated <u>Veronicella leydigi</u>	Produce	LAX/NURS	1
A Slug "Q" Rated <u>Veronicella</u> sp.	Cut Flowers	LAX	11

Pest Exclusion Activities

<u>Pest Intercepted</u> Common Name <u>Genus species</u>	<u>Material</u>	<u>Source*</u>	<u>Scope of Program</u> Pest <u>Interceptions</u>
Bark Beetle <u>Xyleborus</u> sp.	Cut Flowers	LAX	1
A Moth Yponomeutoidea Superfamily	Monstera	LAX	1
A Snail "Q" Rated <u>Zachrysia provisoria</u>	Nursery Stock	LAX/NURS	8
Unknown Eggs (insect)	Cut Flowers	LAX	1
Quack Grass <u>Agropyron repens</u>	Lawn Seed	NURS	1
Purple Mustard <u>Chorispora tenella</u>	Grass Seed	NURS	2

Total **472**

* Source: P.O. - Post Office, FX = Federal Express
LAX - Los Angeles International Airport
MURS - Nurseries



***Los Angeles County Agricultural Commissioner/
Weights & Measures Department
3400 La Madera Avenue
El Monte, California 91732***



LOS ANGELES COUNTY

AGRICULTURAL COMMISSIONER /
WEIGHTS AND MEASURES DEPARTMENT

CROP AND LIVESTOCK REPORT



1993



COUNTY OF LOS ANGELES

Department of
Agricultural Commissioner
and Weights and Measures

E. Leon Spaugy
Agricultural Commissioner/
Director of Weights and Measures

3400 La Madera Avenue
El Monte, California 91732

Cato R. Fiksdal
Chief Deputy

1993 Crop and Livestock Report

Henry J. Voss, Director
California Department of Food and Agriculture

and

The Honorable Board of Supervisors
County of Los Angeles

It is with pleasure that I submit the 1993 Crop and Livestock Report on the acreage, yield, and gross value of agricultural commodities produced in Los Angeles County.

The overall gross value of agricultural crops and products for 1993 was \$214,010,713, a 6.42% increase from the 1992 total of \$201,087,100.

Nursery Products, the leading gross value commodity category, decreased 2.9% due to the closure of two major nurseries and a slower economy last year. Decreases were also experienced in Cut Flowers (8.2%) and Forest Products (12.7%). However, significant increases were seen in Fruit and Nut Crops (49.12%), Vegetable Crops (22.68%), Field Crops (54.53%), Livestock and Poultry (45.26%), and Apiary, Livestock, and Poultry Products (15.02%), primarily due to increases in production and prices in these categories.

Respectfully submitted,

E. Leon Spaugy
Agricultural Commissioner/
Director of Weights and Measures



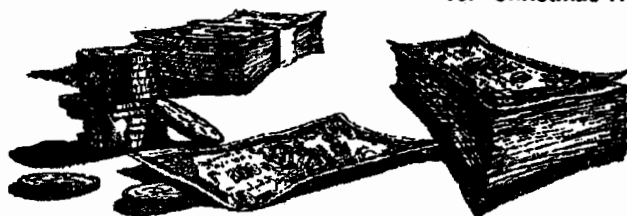
*'It is a comfortable feeling to know that
you stand on your own ground.
Land is about the only thing that can't fly away.'*

Anthony Trollope 1815-1882

This report was possible only through the cooperation of all the nurserymen, growers, governmental and private agencies, and others who provided the information necessary for its production. A special acknowledgement and thank you to staff members Raymond Smith, for the pen-and-ink crop report cover, and to Miguel Angel Gonzalez and Julia Chen, for the report layout and for compiling and computerizing the statistics.

MILLION DOLLAR CROPS

1. Ornamental Trees and Shrubs	\$106,420,280	7. Dairy Cattle	4,349,800
2. Bedding Plants	20,327,140	8. Strawberries	4,256,016
3. Dry Onions	16,278,210	9. Milk	4,022,000
4. Peaches	11,513,211	10. Ground Covers	3,668,484
5. Indoor Plants, Foliage	8,050,781	11. Honey	2,149,850
6. Alfalfa Hay	6,410,297	12. Rangeland	1,711,336
		13. Christmas Trees	1,473,580



SUMMARY

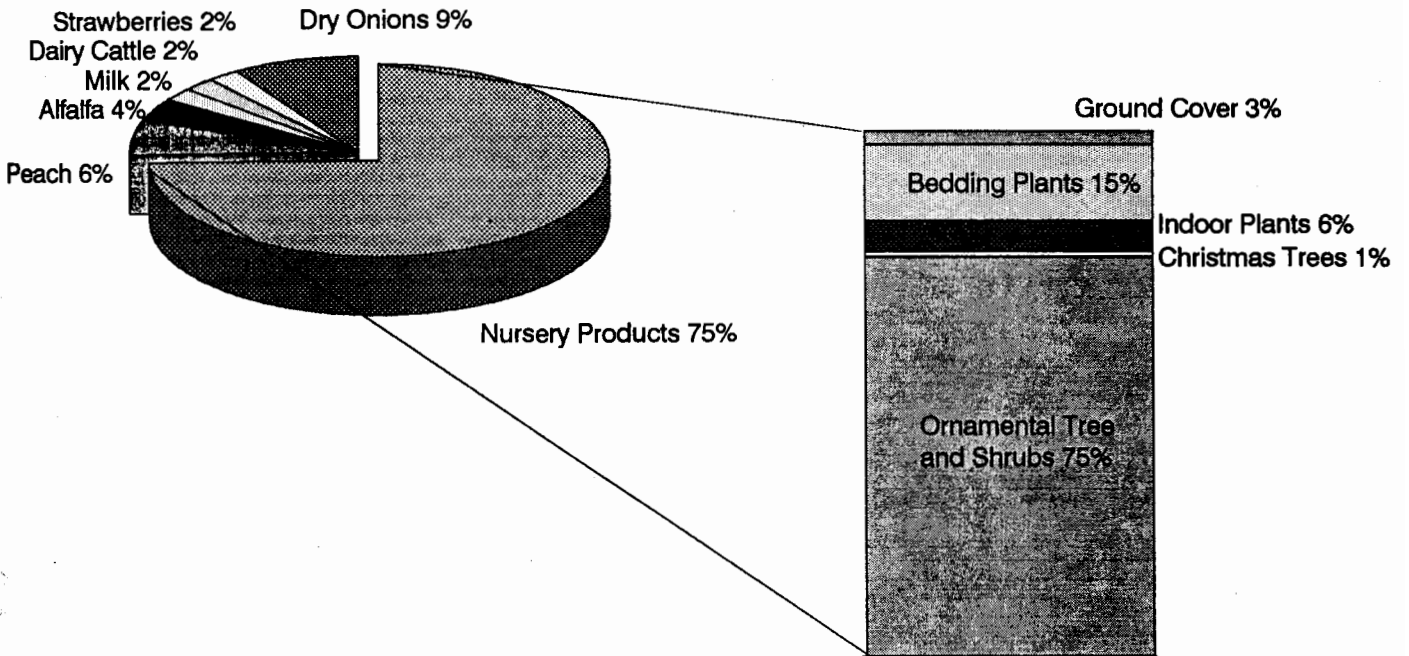
<u>Commodity</u>	<u>1991</u>	<u>1992</u>	<u>1993</u>
Fruit & Nuts	\$12,520,000	\$13,550,000	\$20,205,805
Vegetable Crops	23,064,000	16,956,500	20,802,750
Nursery Products	151,591,000 *	149,104,000	144,835,163
Cut Flowers	2,563,000	2,432,000	2,232,417
Field Crops	7,366,000	6,802,600	10,512,096
Livestock and Poultry	6,650,000	4,635,200	6,733,256
Apiary, Livestock, and Poultry Products	8,903,000 +	7,389,400 *	8,499,450
Subtotal	\$212,657,000 *	\$200,869,700	\$213,820,937
Forest Products	210,000	217,400	189,776
Grand Total	\$212,867,000 *+	\$201,087,100	\$214,010,713

* Revised figure

+ Does not include wool total

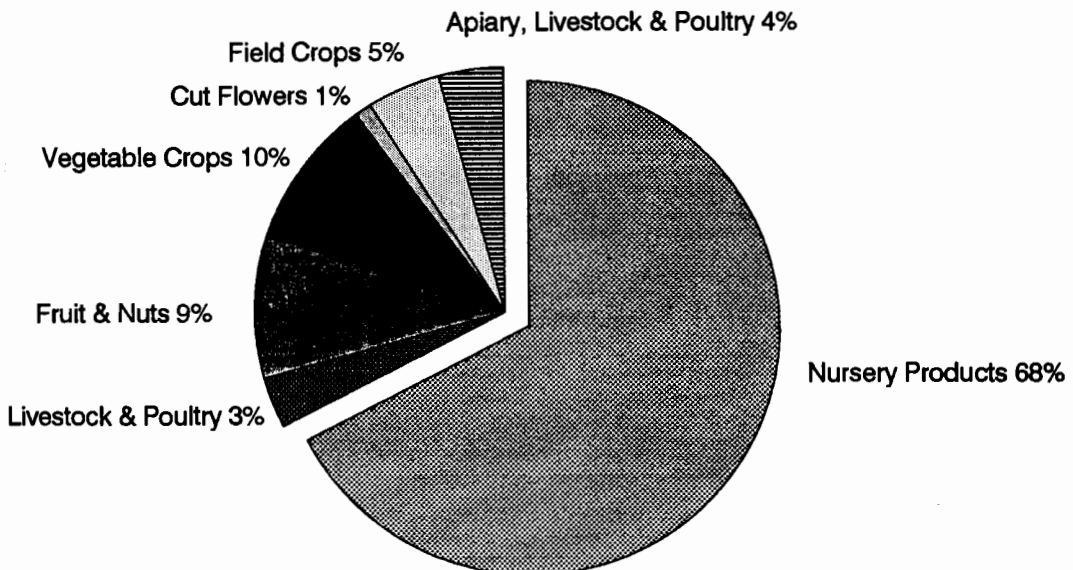
Figures given are gross values. U.S.D.A. payments are not included.

LEADING CROPS RELATIVE GROSS VALUE



CROP VALUE SUMMARY

Total Value \$214,010,713



Fruit and Nut Crops

Crop	Year	Acreage	Production		Unit	Value		
			Per Acre	Total		Per Unit	Total	
Strawberries	1993	335	15.10	5,054	Ton	\$842	\$4,256,016	
	1992	350*	15.00*	5,250	Ton	\$649	\$3,407,000	
Peaches (Freestone)	1993	738	18.88	13,932	Ton	826	11,513,211	
	1992	728	11.90	8,663	Ton	827	7,164,000	
Avocados	1993	240	1.56	378	Ton	938	354,120	
	1992	250	.79	197	Ton	884	174,000	
Cherries	1993	140	1.75	245	Ton	2,000	490,000	
	1992	140	1.00	140	Ton	1,900	266,000	
Miscellaneous	1993	486	Includes citrus, nectarines, and other fruits and nuts.					3,592,458
	1992	408						2,539,000
TOTAL	1993	1,941						\$20,205,805
	1992	1,717						\$13,550,000



* Revised figure

Vegetable Crops

Crop	Year	Acreage	Production		Unit	Value		
			Per Acre	Total		Per Unit	Total	
Dry Onions	1993	1,564	27.4	42,884	Ton	\$380	\$16,278,210	
	1992	1,665	25	41,625	Ton	\$320	\$13,320,000	
Sweet Corn	1993	165	8.20	1,005	Ton	581	583,542	
	1992	285	6.13	1,747	Ton	423	739,000	
Table Greens	1993	265	Includes oriental specialties and leaf lettuce.					1,757,750
	1992	238						673,000
Vine Crops	1993	166	Includes pumpkins, melons and tomatoes.					769,572
	1992	198						406,000
Root Vegetables	1993	16	Includes beets and carrots.					45,408
	1992	7						30,500
Miscellaneous	1993	69	Includes herbs and bean sprouts.					1,368,268
	1992	88						1,788,000
TOTAL	1993	2,245						\$20,802,750
	1992	2,481						\$16,956,500

Nursery Products

Item	Year	House Sq. Ft.	Field Acres	Total
Ornamental Trees and Shrubs	1993	4,296,318	1,850	\$106,420,280
	1992	4,867,000	1,942	\$105,111,000
Bedding Plants	1993	2,008,200	110	20,327,140
	1992	576,000	188	23,636,000
Indoor Plants Follage	1993	1,205,140	6.0	8,050,781
	1992	851,000	16.7	8,744,000
Ground Covers	1993	780,110	35.1	3,668,484
	1992	883,000	35.3	3,920,000
Indoor Plants Flowering	1993	254,265	1	1,365,559
	1992	523,000	0	833,000
Miscellaneous	1993	78,967	246	5,002,919
	1992	206,000	372	6,860,000
Includes vegetable plants, orchids, cacti, and sod				
TOTAL	1993	8,623,000	2,248.1	\$144,835,163
	1992	7,906,000	2,554.0	\$149,104,000

Cut Flowers and Decoratives

Item	Year	House Sq. Ft.	Field Acres	Quantity Sold	Unit	Per Unit	Value Total
Christmas Trees	1993		214	49,823	Tree	\$29.50	\$1,473,580
	1992		228	62,167	Tree	\$25.83	\$1,606,000
Carnations (Standard)	1993		6	794,950	Bloom	.21	166,130
	1992		4	801,000	Bloom	.21	168,000
Chrysanthemums	1993	99,248	3				167,070
	1992	167,000	4.5				160,000
Miscellaneous	1993	33,928	66				425,637
	1992	43,260	78				498,000
Includes <i>Strelitzia</i> , <i>Gypsophila</i> , and all other cut flowers.							
TOTAL	1993	133,176	285.43				\$2,232,417
	1992	210,260	314.50				\$2,432,000



Field Crops

Crop	Year	Acreage	Production		Unit	Value	
			Per Acre	Total		Per Unit	Total
Alfalfa Hay	1993	5,532	8.05	44,518	Ton	\$144	\$6,410,297
	1992	5,222	8.45	44,126	Ton	\$105	\$4,633,000
Grain Hay	1993	1,779	2.51	4,463	Ton	127	565,511
	1992	1,374	1.6	2,198	Ton	90	198,000
Barley	1993	672	2.51	1,685	Ton	101	169,386
	1992	3,402	.43	1,463	Ton	111	162,000
Miscellaneous	1993	1,922 *					1,655,566
	1992	1,306 *					497,000
				Value includes wheat grain, irrigated pasture and grazing privileges on stubble			
Rangeland	1993	230,229					1,711,336
	1992	225,229					1,257,000
TOTAL	1993	9,634 **					\$10,512,096
	1992	12,804 **					\$6,802,600

* Excluding stubble.

** Excluding rangeland.

Forest Products

Item	Year	Production	Unit	Price	Value
Firewood	1993	618	Cord	\$32.00	\$19,776
	1992	576	Cord	\$32.00	\$18,400
Timber	1993				170,000 *
	1992				199,000
				Miscellaneous Products	
TOTAL	1993				\$189,776
	1992				\$217,400

* Figures obtained from State Board of Equalization, Timber Tax System.

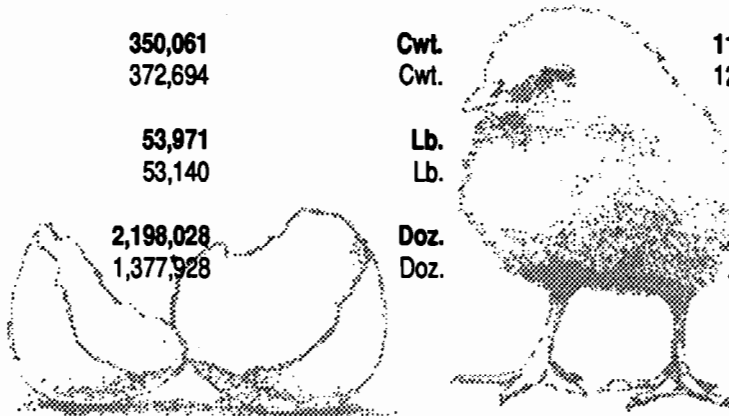
Livestock and Poultry

Species	Year	Production	Total Live Weight	Unit	Value	
					Per Unit	Total
Chickens	1993	981,100	4,905,500	Lb.	.025	\$123,000
	1992	942,000	4,710,000	Lb.	.02	\$94,200
Dairy Cattle	1993	3,346		Head	1,300	4,349,800
	1992	2,193		Head	1,290	2,829,000
Includes feeder calves & cull cows						
Beef Cattle	1993	3,321	23,247	Cwt.	64.60	1,502,000
	1992	2,166	15,162	Cwt.	59.10	896,000
Includes calves & heifers						
Hogs	1993	4,038	6,057	Cwt.	50.10	303,456
	1992	4,826	7,239	Cwt.	47.10	341,000
Sheep	1993	4,285	6,368	Cwt.	27.30	174,000
	1992	4,827	7,241	Cwt.	22.50	163,000
Miscellaneous	1993					281,000
	1992					312,000
Includes ducks, rabbits, and goats						
Total	1993					\$6,733,256
	1992					\$4,635,200

Apiary, Livestock, and Poultry Products

Item	Year	Production	Unit	Per Unit	Value	
					Total	
Honey	1993	5,657,500	Lb.	.38	\$2,149,850	
	1992	2,855,000	Lb.	.47	\$1,342,000	
Pollination	1993	32,000	Hive	35.50	1,136,000	
	1992	24,500	Hive	31.75	778,000	
Beewas	1993	14,000	Lb.	1.20	16,800	
	1992	12,500	Lb.	1.25	15,600	
Milk	1993	350,061	Cwt.	11.49	4,022,000	
	1992	372,694	Cwt.	12.26	4,569,000	
Wool	1993	53,971	Lb.	.42	22,800	
	1992	53,140	Lb.	.73	38,800	
Eggs	1993	2,198,028	Doz.	.524	1,152,000	
	1992	1,377,928	Doz.	.469	646,000*	
Total	1993				\$8,499,450	
	1992				\$7,389,400*	

* Revised Figure



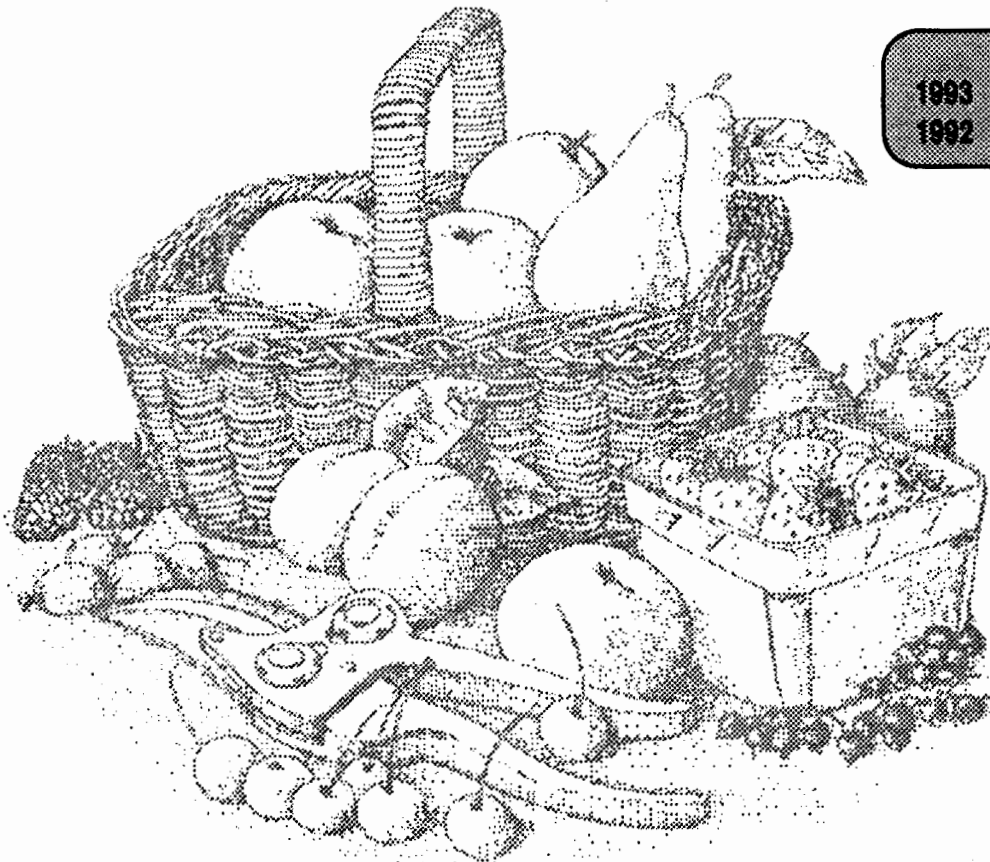
County of Los Angeles

Sustainable Agriculture Reporting

Organic Farming Statistics 1993

Crop	Estimated Acres		Crop	Estimated Acres	
	1992	1993		1992	1993
Apples	6	6	Nectarines	5	5
Avocado	-	4	Asian Pears	5	7
Peaches	9	9	Pears	5	5
Herbs (including sprouts)	51	48	Vegetables (including oriental & lettuce)	23	25
Cherries	19	19	Misc. Trees	14	15

	Farms	Acres
1993	20	143
1992	10	137



Pest Detection Activities

Pest	Number of Traps		Scope of Programs
	Pest Detection	Pest Eradication	
Mediterranean Fruit Fly	7,576	47,340	311 Detections
Mexican Fruit Fly	4,920	1,060	20 Detections
Oriental Fruit Fly	4,941	250	38 Detections
Melon Fruit Fly	4,941	0	0 Detections
Guava Fruit Fly	4,941	50	2 Detections
Gypsy Moth/Asian Gypsy Moth	3,546	100	2 Detection
Japanese Beetle	3,618	674	1 Detections (LAX)
European Corn Borer	17	0	0 Detections
European Pine Shoot Moth	32	0	0 Detections
Khapra Beetle	478	0	0 Detections
TOTAL	35,010	49,474	374 Detections

Pest Eradication Activities

Pest	Method	Scope of Program
Mediterranean Fruit Fly	Steriles Released Reg./Soil/Bait Treatments Exclusion - Quarantine	16,819.83 Million Released 6,519 Properties 915 Sq. Miles/ 244,870 Lbs. Fruit Seized
Oriental Fruit Fly	Male Annihilation Treatments	1 Treatment Area
Mexican Fruit Fly	Steriles Released Bait Treatments Exclusion - Quarantine	237 Million Released/ 630 Properties Treated 63 Sq. Miles
Alligatorweed	Gross Area Inspected Herbicide Treatment (Net Area)	1,417 Acres .46 Acres Treated
Halogeton	Mechanical Control	0 Sq. Ft. Treated

Biological Control Activities

Pest	Agent/Mechanism	Scope of Programs
Mediterranean Fruit Fly	(Steriles)	16,819.83 Million Sterile Fruit Flies Released
Mexican Fruit Fly	(Steriles)	237 Million Sterile Fruit Flies Released

Pest Exclusion Activities

Pest Exclusion Violations Issued

Number of Violations Issued

Citrus Pests	105
Caribbean Fruit Fly	99
Cherry Fruit Fly	2
Sweet Potato Weevil	14
Peach Yellows/Red Suture	1
Nut Tree Pests	1
Ozonium Root Rot	48
European Corn Borer	15
Plum Curculio/Apple, Blueberry Maggot	65
Burrowing Nematode	28
Corn/Sugarcane Borer	3
Walnut/Pecan Pests	2
Cedar Apple Rust	4
European Pine Shoot Moth	1
Peach Rosette Disease	2
Cereal Leaf Beetle	4
West Indian Sugarcane Root Borer	3
Japanese Beetle	15
Hydrilla	4
Soybean Cyst Nematode	16
Citrus Canker	18
Imported Fire Ant	3
Infested/Presume Infested	429
Markings	142
Chestnut Bark/Oak Wilt Disease	2
Failure to Hold Plant Material For Inspection	3
Foreign Fruits and Vegetables	5
Fruits and Vegetables From Hawaii	2
Total	1,036

Pest Exclusion Activities

<u>Pest Intercepted</u> Common Name/ <i>Genus Species</i>	<u>Material</u>	<u>Source*</u>	<u>Scope of Program</u> <u>Pest Interceptions</u>
Bean weevil <u>Acanthoscelides</u> sp.	Tillandsia	QUA	1
Albopicta scale <u>Acutaspis albopicta</u>	Palm	QUA	1
Chinese Rose Beetle <u>Adoretus sinicus</u>	Basil	QUA	1
Spiraling whitefly <u>Aleurodicus dispersus</u>	Herbs, Ti	QUA	18
Lantana whitefly <u>Aleuropleurocelus</u> nr <u>oblanceolatus</u>	Lantana	NSY	1
Woolly whitefly <u>Aleurothrixus floccosus</u>	Citrus	PUBLIC, NSY	17
Mexican leafroller <u>Amorbia emigratella</u>	Ginger	QUA	2
Mexican fruit fly <u>Anastrepha ludens</u>	Misc. fruits	FF SURVEY	15
Q-rated ant <u>Anoplolepis longipes</u>	Cut flowers, Ginger	QUA	19
California red scale <u>Aonidiella auranti</u>	Citrus, palm	QUA, PUBLIC	2
Coffee bean weevil <u>Araecerus fasciculatus</u>	Basil	QUA	2
Coconut scale <u>Aspidiotus destructor</u>	Palms	QUA	7
Slant-faced grasshopper <u>Atractomorpha ambigua</u>	Basil	QUA	1
Guava fruit fly <u>Bactrocera correcta</u>	Avocado	FF SURVEY	2

Pest Exclusion Activities

<u>Pest Intercepted</u> Common Name/ <u>Genus Species</u>	<u>Material</u>	<u>Source*</u>	<u>Scope of Program</u> <u>Pest Interceptions</u>
Oriental fruit fly <u>Bactrocera dorsalis</u>	Misc. fruits	QUA, FF SURVEY	44
B-rated snail <u>Bradybaena similaris</u>	Palms, ficus, winged beans	QUA	22
Florida carpenter ant <u>Camponotus abdominalis</u>	Teddy bears, ginger	QUA	2
Medfly <u>Ceratitis capitata</u>	Misc. fruits	FF SURVEY	212
Florida red scale <u>Ceroplastes floridensis</u>	Ginger, phoenix	QUA	3
Red wax scale <u>Ceroplastes rubens</u>	Neanthe bella	QUA, NSY	2
Tortoise beetle <u>Chelymopha cribraria</u>	Herbs	QUA	1
Green garden looper <u>Chrysodeixus eriosoma</u>	Basil	QUA	7
Black stink bug <u>Coptosoma xanthogramma</u>	Ginger	QUA	1
Formosan termite <u>Coptotermes formosanus</u>	Ginger	QUA	1
Privet thrips <u>Dendrothrips ornatus</u>	Lilac	QUA	1
Cloudy winged whitefly <u>Dialeurodes citrifolii</u>	Citrus	NSY	1
Q-rated leafhopper <u>Empoasca solana</u>	Herbs	QUA	1
Giant mealybug <u>Ferrisia virgata</u> or nr	Ginger	QUA	1

Pest Exclusion Activities

<u>Pest Intercepted</u> Common Name/ <u>Genus Species</u>	<u>Material</u>	<u>Source*</u>	<u>Scope of Program</u> <u>Pest Interceptions</u>
Coffee root mealybug <u>Geococcus coffeae</u>	Kentia palm	QUA	1
Mirid bug <u>Halticus chrysolepis</u> or nr	Basil	QUA	2
Tropical palm scale <u>Hemiberlesia palmae</u>	Aechmea	QUA	1
Mining scale <u>Howardia biclavis</u>	<u>Ficus benjamina</u>	QUA	3
Glassy scale <u>Inglisia vitrea</u>	Ginger	QUA	1
Acuminate scale <u>Kilifia acuminata</u>	Philodendron	QUA	1
B-rated snail <u>Lamellaxis</u> sp.	Phoenix	QUA	2
Gypsy moth <u>Lymantria dispar</u>	Ornamental tree, bird bath	QUA, GM SURVEY	3
Borrower bug <u>Microporus</u> sp.	Ginger	QUA	1
Tahitian coconut weevil <u>Myocalandra taitensis</u>	Herbs	QUA	1
Southern green stink bug <u>Nezara viridula</u>	Basil, herbs	QUA	4
Lygaeid bug <u>Nysius</u> sp.	Cut flowers	QUA	1
B-rated snail <u>Opeas</u> sp.	Phoenix	QUA	6
Orchid weevil <u>Orchidophilus alterrinus</u>	Bamboo	QUA	1

Pest Exclusion Activities

<u>Pest Intercepted</u> Common Name/ <u>Genus Species</u>	<u>Material</u>	<u>Source*</u>	<u>Scope of Program</u> <u>Pest Interceptions</u>
Weevil <u>Oxydema sp.</u>	Cut flowers	QUA	1
Nesting whitefly <u>Paraleyrodes minei</u>	Plumeria, Citrus	NSY, PUBLIC	3
Lygaeid bug <u>Paromius longulus</u>	Spanish moss	QUA	1
Big headed ant <u>Pheidole megacephala</u>	Cut flowers, Basil	QUA	46
Chafer <u>Phyllophaga sp.</u>	<u>Sarracenia sp.</u>	QUA	2
Boxwood scale <u>Pinnaspis buxi</u>	Cut flowers	QUA	3
Lesser snow scale <u>Pinnaspis strachani</u>	Areca palm, ginger	QUA	12
Uniloba scale <u>Pinnaspis uniloba</u>	Alyxia	QUA	1
Japanese beetle <u>Popillia japonica</u>	Ivy	JB SURVEY	2
Pyriform scale <u>Protopulvinaria pyriformis</u>	Tropical vine	NSY	3
Magnolia white scale <u>Pseudaulacaspis cockerelli</u>	Cycas	QUA, NSY	60
Trilobe scale <u>Pseudaonidia trilobitiformis</u>	Ficus	QUA	3
Green shield scale <u>Pulvinaria psidii</u>	Gardenia, ficus	QUA, NSY	12
Soil mealybug <u>Rhizoecus hibisci</u>	Palms	QUA	8

Pest Exclusion Activities

<u>Pest Intercepted</u> Common Name/ <u>Genus Species</u>	<u>Material</u>	<u>Source*</u>	<u>Scope of Program</u> <u>Pest Interceptions</u>
Burrowing bug <u>Rhytidiporus indentatus</u>	Phoenix	QUA	1
False powder post beetle <u>Synoxylon conigerum</u>	Wood	PUBLIC	1
Torpedo bug egg mass <u>Siphanta acuta</u>	Protea	QUA, PUBLIC	2
Red imported fire ant <u>Solenopsis invicta</u>	Nursery stock, frozen chickens	QUA	9
Q-rated leafhopper <u>Sophonia rufofascia</u>	Ti, cut flowers	QUA	15
Cut worm <u>Spodoptera latifascia</u>	Ravenea	QUA	1
Lace bug <u>Stephanitis sp.</u>	Unknown	QUA	1
Long-horned beetle <u>Sybra alternans</u>	Herbs	QUA	6
Black headed ant <u>Tapinoma melanocephalum</u>	Cut flowers, kitchen	QUA, PUBLIC	7
White footed ant <u>Technomyrmex albipes</u>	Cut flowers	QUA	41
Stink bug <u>Thyanta custator</u>	Basil	QUA	1
Slug <u>Veronicella sp.</u>	Taro	QUA	7
Camaenid snail <u>Zachrysia provisoria</u>	Cycas, phoenix	QUA	6
Total			715

* Source: P. O. - Post Office
LAX - Los Angeles International Airport

FX - Federal Express
NSY - Nursery

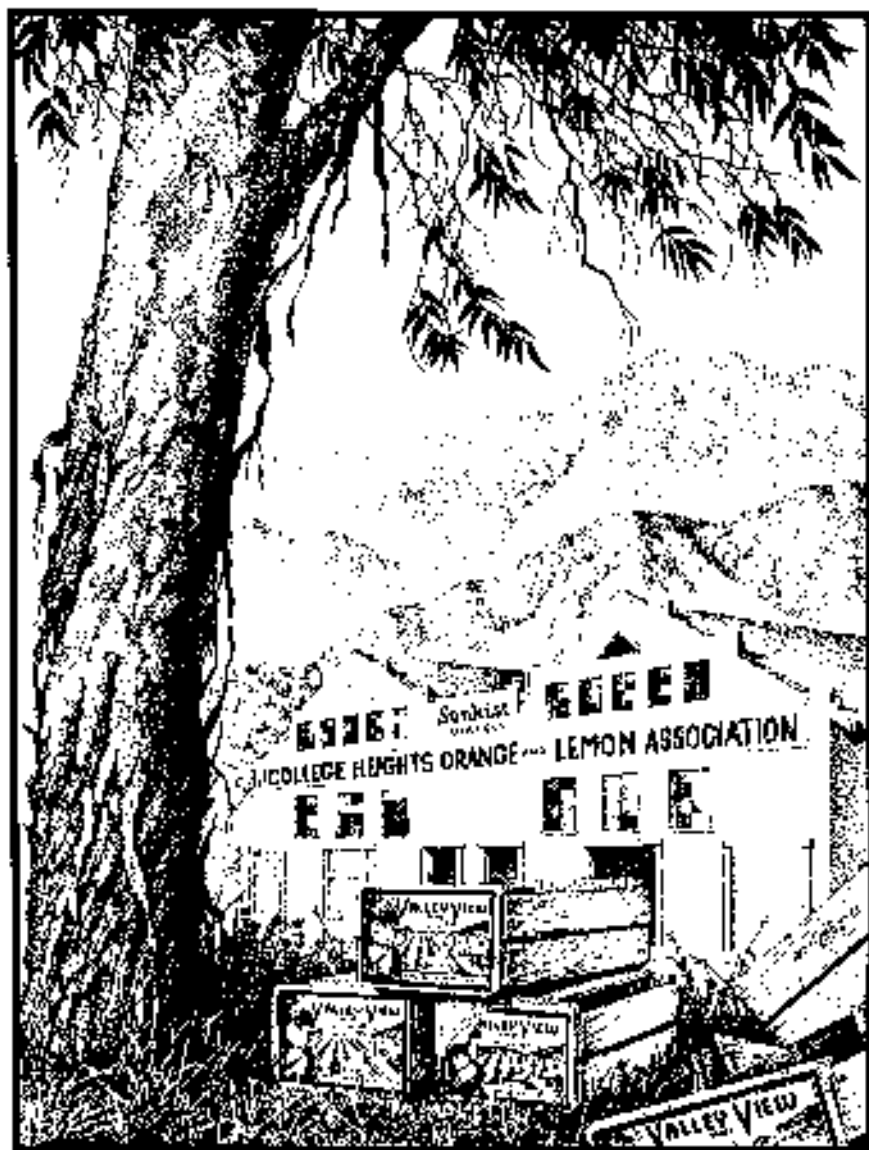
QUA - Quarantine

***Los Angeles County Agricultural Commissioner/
Weights & Measures Department
3400 La Madera Avenue
El Monte, California 91732***



LOS ANGELES COUNTY

AGRICULTURAL COMMISSIONER /
WEIGHTS AND MEASURES DEPARTMENT



1994

CROP AND LIVESTOCK REPORT



COUNTY OF LOS ANGELES

Department of
Agricultural Commissioner
and Weights and Measures

3400 La Madera Avenue
El Monte, California 91732

E. Leon Spaugy
Agricultural Commissioner/
Director of Weights and Measures

Cato R. Fikedal
Chief Deputy

1994 Crop and Livestock Report

Henry J. Voss, Secretary
California Department of Food and Agriculture

and

The Honorable Board of Supervisors
County of Los Angeles

In accordance with the provisions of Section 2272 and 2279 of the California Food and Agricultural Code, it is with pleasure that I submit the **1994 Crop and Livestock Report** on the acreage, yield, and gross value of agricultural commodities produced in Los Angeles County.

The overall gross value of agricultural crops and products for 1994 was \$216,114,112, a 0.98% increase from the 1993 total of \$214,010,713.

Nursery Products continues as the leading gross value commodity category with an increase of 4.75%. Increases also occurred in *Apiary, Livestock and Poultry Products* (7.69%); and *Livestock and Poultry* (8.94%). Decreases were experienced in *Cut Flowers* (14.95%); *Forest Products* (6.5%); *Fruit and Nut Crops* (11.37%); *Vegetable Crops* (9.45%); and *Field Crops* (13.64%). Most of these decreases were due to a reduction in the per unit value of the crop. Total acreage increased slightly for *Fruit and Nut Crops* and *Nursery Products*; decreases occurred in *Vegetable Crops* and *Cut Flowers*.

Respectfully submitted,

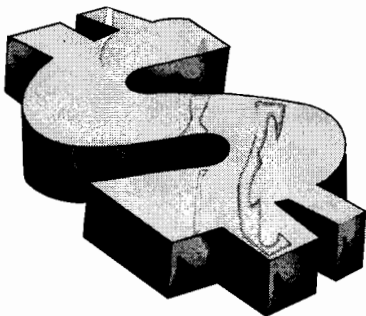
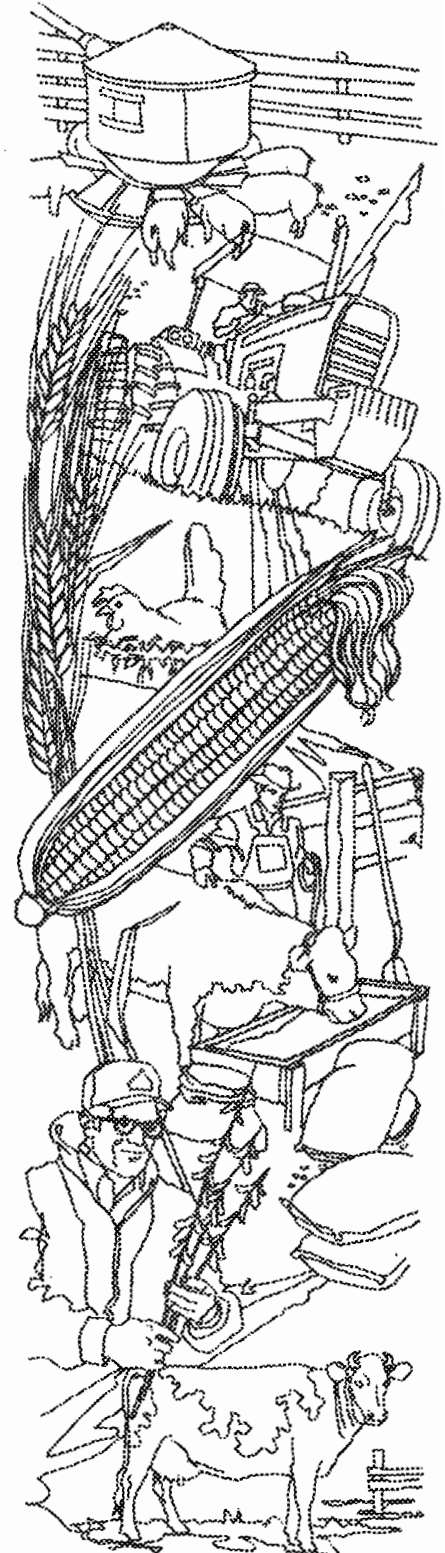
E. Leon Spaugy
Agricultural Commissioner/
Director of Weights and Measures

*"When tillage begins, other arts follow. The farmers, therefore,
are the founders of human civilization."*

Daniel Webster Jan 13, 1840

MILLION DOLLAR CROPS

1. Ornamental Trees and Shrubs	\$99,094,568
2. Bedding Plants	29,675,700
3. Dry Onions	12,720,000
4. Indoor Plants, Foliage	12,095,304
5. Peaches	10,700,000
6. Alfalfa Hay	6,690,040
7. Dairy Cattle	4,325,300
8. Milk	4,273,391
9. Ground Covers	3,761,848
10. Strawberries	2,705,386
11. Honey	2,280,000
12. Nectarines	2,200,000
13. Eggs	1,527,195
14. Rangeland	1,400,000
15. Beef Cattle	1,232,321
16. Pollination	1,029,000



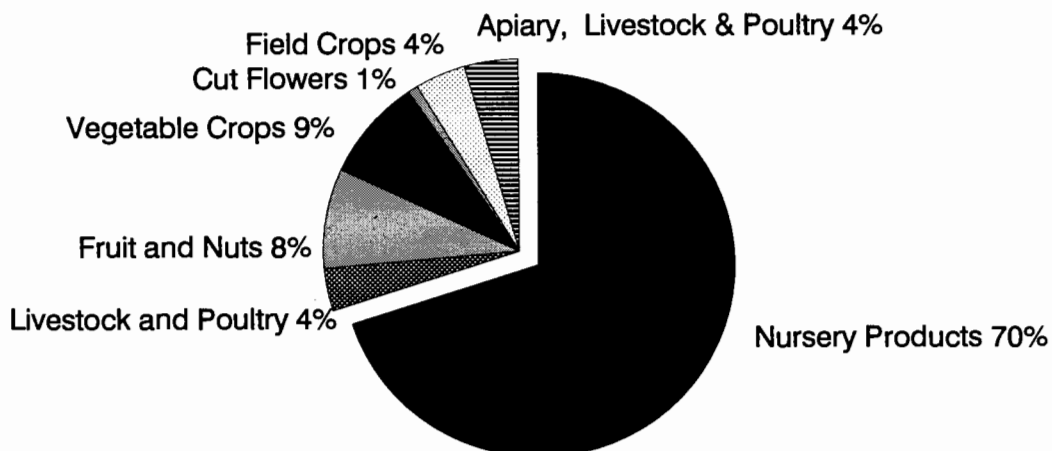
SUMMARY

<u>Commodity</u>	<u>1992</u>	<u>1993</u>	<u>1994</u>
Fruit and Nuts	\$13,550,000	\$20,205,805	\$17,908,041
Vegetable Crops	16,956,500	20,802,750	18,836,679
Nursery Products	149,104,000	144,835,163	151,726,383
Cut Flowers	2,432,000	2,232,417	1,898,573
Field Crops	6,802,600	10,512,096	9,078,067
Livestock and Poultry	4,635,200	6,733,256	7,335,447
Apiary, Livestock, and Poultry Products	<u>7,389,400</u> *	<u>8,499,450</u>	<u>9,153,507</u>
Subtotal	200,869,700	213,820,937	215,936,697
Forest Products	<u>217,400</u>	<u>189,776</u>	<u>177,415</u>
Grand Total	\$201,087,100	\$214,010,713	\$216,114,112

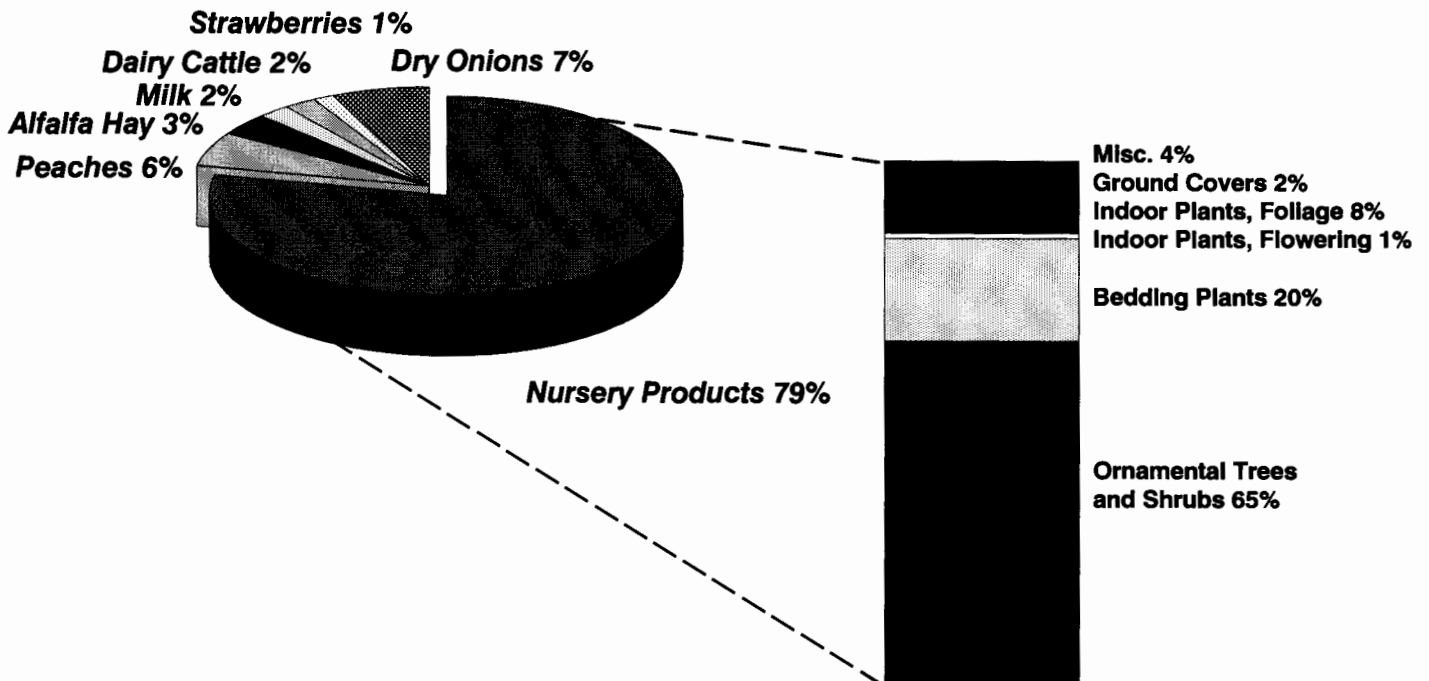
* Revised figure

CROP VALUE SUMMARY

Total Value \$216,114,112



LEADING CROPS RELATIVE GROSS VALUE



Nursery Products

Item	Year	House Sq. Ft.	Field Acres	Total
Ornamental Trees and Shrubs	1994	5,135,162	1,765.2	\$99,094,568
	1993	4,296,318	1,850	\$106,420,280
Bedding Plants	1994	2,608,890	269.3	29,675,700
	1993	2,008,200	110	20,327,140
Indoor Plants, Foliage	1994	942,060	13.8	12,095,304
	1993	1,205,140	6.0	8,050,781
Ground Covers	1994	873,670	45.9	3,761,848
	1993	780,110	35.1	3,668,484
Indoor Plants, Flowering	1994	308,984	12.6	1,633,465
	1993	254,265	1	1,365,559
Miscellaneous	1994	84,280	281.2	5,465,498
	1993	78,967	246	5,002,919
Includes vegetable plants, orchids, cacti, and sod.				
TOTAL	1994	9,953,046	2,388.0	\$151,726,383
	1993	8,623,000	2,248.1	\$144,835,163

Vegetable Crops

Crop	Year	Acreage	Production		Unit	Value		
			Per Acre	Total		Per Unit	Total	
Dry Onions	1994	1,346	26.24	35,325	Ton	\$361	\$12,720,000	
	1993	1,564	27.40	42,884	Ton	380	\$16,278,210	
Sweet Corn	1994	205	4.88	1,001	Ton	431	431,425	
	1993	165	8.20	1,005	Ton	581	583,542	
Table Greens	1994	220	Includes oriental specialties and leaf lettuce.					1,690,413
	1993	265						1,757,750
Vine Crops	1994	254	Includes pumpkins, melons and tomatoes.					1,338,969
	1993	166						769,572
Root Vegetables	1994	21	Includes beets and carrots.					85,099
	1993	16						45,408
Miscellaneous	1994	123	Includes herbs and bean sprouts.					2,570,774
	1993	69						1,368,268
TOTAL	1994	2,169					\$18,836,680	
	1993	2,245					\$20,802,750	

Fruit and Nut Crops

Crop	Year	Acreage	Production		Unit	Value		
			Per Acre	Total		Per Unit	Total	
Strawberries	1994	359	9.90	3,554	Ton	\$761	\$2,705,386	
	1993	335	15.10	5,054	Ton	\$842	\$4,256,016	
Peaches (Freestone)	1994	720	18.06	13,000	Ton	823	10,700,000	
	1993	738	18.88	13,932	Ton	826	11,513,211	
Nectarines	1994	110	20.00	2,200	Ton	1,000	2,200,000	
Avocados	1994	158	1.83	290	Ton	1,119	324,260	
	1993	240	1.56	378	Ton	938	354,120	
Cherries	1994	140	1.50	210	Ton	2,000	420,000	
	1993	140	1.75	245	Ton	2,000	490,000	
Miscellaneous	1994	594	Includes citrus, and other fruits and nuts.					1,558,395
	1993	486						3,592,458
TOTAL	1994	2,081					\$17,908,041	
	1993	1,941					\$20,205,805	

Cut Flowers and Decoratives

Item	Year	House Sq. Ft.	Field Acres	Quantity Sold	Unit	Per Unit	Value Total
Christmas Trees	1994		171	30,693	Tree	\$30.50	\$936,048
	1993		214	49,823	Tree	\$29.50	\$1,473,580
Carnations (Standard)	1994		4.5	750,800	Bloom	.22	164,098
	1993		6	794,950	Bloom	.21	166,130
Chrysanthemums	1994		4				110,345
	1993	99,248	3				167,070
Miscellaneous	1994	98,328	81.75	Includes <u>Strelitzia</u> , <u>Gypsophila</u> , and all other cut flowers.			688,082
	1993	33,928	66				425,637
TOTAL	1994	98,328	261.25				\$1,898,573
	1993	133,176	285.43				\$2,232,417



Field Crops

Crop	Year	Acreage	Production		Unit	Value		
			Per Acre	Total		Per Unit	Total	
Alfalfa Hay	1994	5,565	8.34	46,394	Ton	\$144	\$6,690,040	
	1993	5,532	8.05	44,518	Ton	\$144	\$6,410,297	
Grain Hay	1994	2,450	2.0	4,900	Ton	107	526,400	
	1993	1,779	2.51	4,463	Ton	127	565,511	
Barley	1994	1,387	.73	1,006	Ton	102	102,761	
	1993	672	2.51	1,685	Ton	101	169,386	
Miscellaneous	1994	886	Value includes wheat grain, irrigated pasture and grazing privileges on stubble.					358,866
	1993	1,922 *						1,655,566
Rangeland	1994	240,000						1,400,000
	1993	230,229						1,711,336
TOTAL	1994	10,288 **						\$9,078,067
	1993	9,634 **						\$10,512,096

* Excluding stubble.

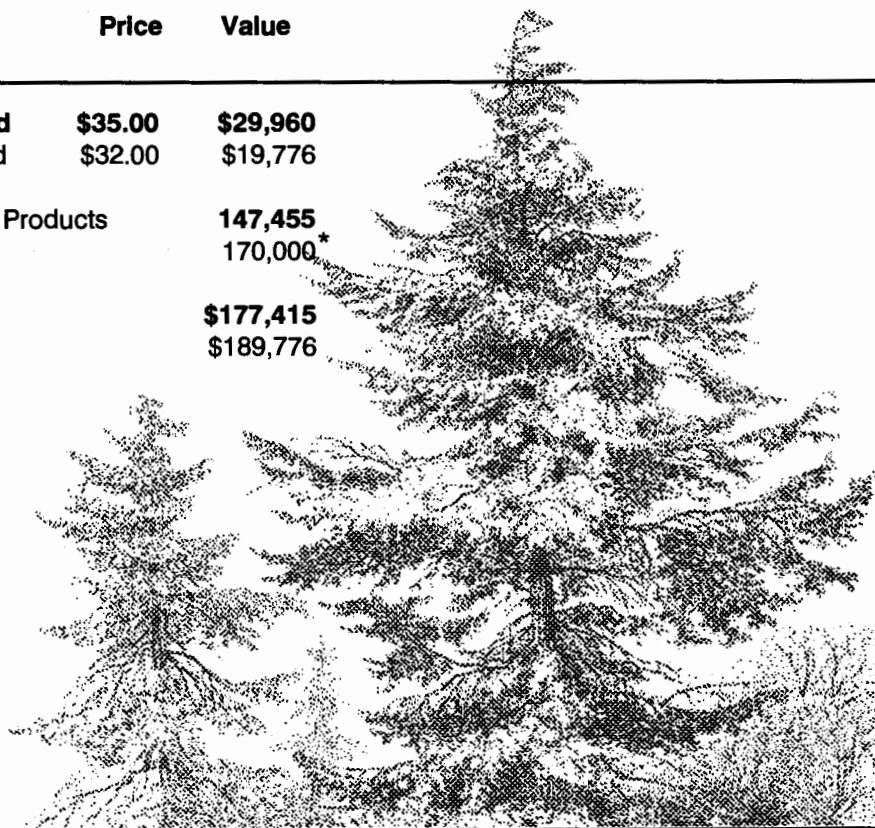
** Excluding rangeland.

Forest Products

Item	Year	Production	Unit	Price	Value
Firewood	1994	856	Cord	\$35.00	\$29,960
	1993	618	Cord	\$32.00	\$19,776
Timber	1994	Miscellaneous Products			147,455
	1993				170,000*
TOTAL	1994				\$177,415
	1993				\$189,776

* Figures obtained from State Board of Equalization, Timber Tax System.

429 Acres Reforested.



Livestock and Poultry

Species	Year	Production	Total Live Weight	Unit	Value	
					Per Unit	Total
Chickens	1994	1,036,264	6,424,837	Lb.	\$0.19	\$122,072
	1993	981,100	4,905,500	Lb.	\$0.25	\$123,000
Dairy Cattle	1994	3,340		Head	1,295	4,325,300
	1993	3,346		Head	1,300	4,349,800
Includes feeder calves & cull cows						
Beef Cattle	1994	3,067	21,469	Cwt.	57.40	1,232,321
	1993	3,321	23,247	Cwt.	64.60	1,502,000
Includes calves & heifers						
Hogs	1994	3,635	5,453	Cwt.	46.70	254,655
	1993	4,038	6,057	Cwt.	50.10	303,456
Sheep	1994	3,516	5,274	Cwt.	28.10	148,199
	1993	4,285	6,368	Cwt.	27.30	174,000
Miscellaneous	1994					1,252,900
	1993					281,000
Includes ostriches, ducks, rabbits, and goats.						
Total	1994					\$7,335,447
	1993					\$6,733,256

Apiary, Livestock, and Poultry Products

Item	Year	Production	Unit	Per Unit	Value	
					Per Unit	Total
Honey	1994	4,750,000	Lb.	\$.48		\$2,280,000
	1993	5,657,500	Lb.	\$.38		\$2,149,850
Pollination	1994	28,000	Hive	36.75		1,029,000
	1993	32,000	Hive	35.50		1,136,000
Beewax	1994	11,000	Lb.	1.4		15,400
	1993	14,000	Lb.	1.20		16,800
Milk	1994	352,590	Cwt.	12.12		4,273,391
	1993	350,061	Cwt.	11.49		4,022,000
Wool	1994	45,980	Lb.	.62		28,521
	1993	53,971	Lb.	.42		22,800
Eggs	1944	3,356,472	Doz.	.455		1,527,195
	1993	2,198,028	Doz.	.524		1,152,000
Total	1944					\$9,153,507
	1993					\$8,499,450

County of Los Angeles Sustainable Agriculture Reporting

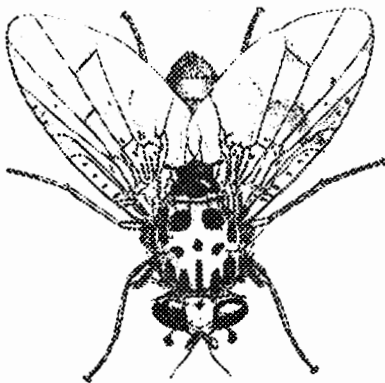
Organic Farming Statistics 1994

Crop	Estimated Acres		Crop	Estimated Acres	
	1993	1994		1993	1994
Apples	6	7	Nectarines	5	5
Avocados	4	4	Asian Pears	7	7
Peaches	9	9	Pears	5	5
Herbs (Including sprouts)	48	50	Vegetables (Including oriental & lettuce)	25	27
Cherries	19	19	Misc. Trees	15	15

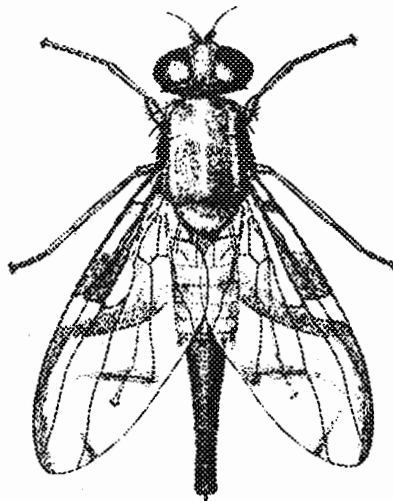
	<u>Farms</u>	<u>Acres</u>
1994	21	148
1993	20	143

Pest Detection Activities

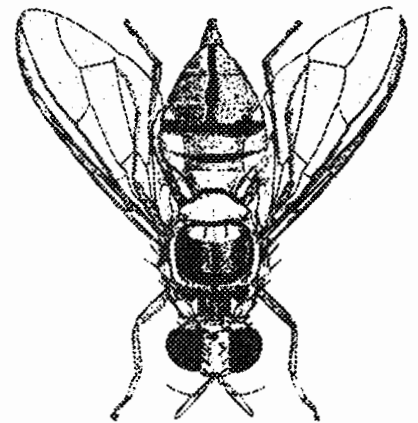
Pest	Number of Traps		Scope of Programs
	Pest Detection	Pest Eradication	
Mediterranean Fruit Fly	5,300	0	5 Detections
Mexican Fruit Fly	4,920	500	0 Detection
Oriental Fruit Fly	4,941	237	14 Detections
Melon Fruit Fly	4,941	284	1 Detections
Guava Fruit Fly	4,941	125	5 Detections
Gypsy Moth/Asian Gypsy Moth	3,546	200	2 Detections
Japanese Beetle	3,618	674	1 Detection (LAX)
European Corn Borer	17	0	0 Detection
European Pine Shoot Moth	32	0	0 Detection
Khapra Beetle	478	0	0 Detection
Africanized Honey Bee	42	1	0 Detection
TOTAL	32,776	2,021	28 Detections



Mediterranean Fruit Fly



Mexican Fruit Fly



Oriental Fruit Fly

Pest Eradication Activities

Pest	Method	Scope of Program
Mediterranean Fruit Fly	Steriles Released Reg./Soil/Bait Treatments Exclusion - Quarantine	19,838.46 Million Released 159 Properties 915 Sq. Miles/ 512,278 Lbs. Fruit Seized
Guava Fruit Fly	Male Annihilation Treatments	1 Treatment Area
Oriental Fruit Fly	Male Annihilation Treatments	1 Treatment Area
Mexican Fruit Fly	Steriles Released Exclusion - Quarantine	485.43 Million Released/ 63 Sq. Miles
Alligatorweed	Gross Area Inspected Herbicide Treatment (Net Area)	2,572.5 Acres 1,969 Sq. Ft. Treated
Halogeton	Mechanical Control	400 Sq. Ft. Treated

Biological Control Activities

Pest	Agent/Mechanism	Scope of Programs
Mediterranean Fruit Fly	(Steriles)	19,838.46 Million Sterile Fruit Flies Released
Mexican Fruit Fly	(Steriles)	485.43 Million Sterile Fruit Flies Released

Pest Exclusion Activities

Pest Exclusion Violations Issued

Number of Violations Issued

Citrus Pests	103
Caribbean Fruit Fly	92
Cherry Fruit Fly	3
Sweet Potato Weevil	15
Peach Yellow/Red Suture	1
Nut Tree Pests	1
Ozonium Root Rot	37
European Corn Borer	19
Plum Curculio/Apple, Blueberry Maggot	66
Burrowing Nematode	31
Corn/Sugarcane Borer	3
Walnut/Pecan Pests	7
Cedar Apple Rust	5
European Pine Shoot Moth	1
Peach Rosette Disease	1
Cereal Leaf Beetle	5
West Indian Sugarcane Root Borer	3
Japanese Beetle	17
Hydrilla	2
Soybean Cyst Nematode	17
Citrus Canker	21
Imported Fire Ant	5
Infested/Presume Infested	413
Markings	139
Chestnut Bark/Oak Wilt Disease	7
Failure to Hold Plant Material For Inspection	12
Foreign Fruits and Vegetables	9
Fruits and Vegetables From Hawaii	6

Total

1,041

Pest Exclusion Activities

<u>Pest Intercepted</u> <u>Common Name/Genus Species</u>	<u>Material</u>	<u>Source*</u>	<u>Scope of Program</u> <u>Pest Interceptions</u>
Leafhopper (larva) <i>Acopsis</i> sp. or nr.	Produce	Qua	1
Spiraling whitefly <i>Aleurodicus dispersus</i>	Herbs, Taro, Ti	Qua	5
Woolly whitefly <i>Aleurothrixus floccosus</i>	Ash, Citrus, Guava	Public Det, Nsy	10
Ant <i>Anoplolepis longipes</i>	Bamboo	Qua	1
California red scale <i>Aonidiella aurantii</i>	Sago palm	Qua	1
Coffee bean weevil <i>Araecerus fasciculatus</i>	Cut flowers	Qua	1
Coconut scale <i>Aspidiotus destructor</i>	Areca palm	Qua	6
Looper <i>Autographa</i> sp.	Herbs	Qua	1
Melon fruit fly <i>Bacterocera cucurbitae</i>	Citrus (lemon)	Det	1
Oriental fruit fly <i>Bacterocera dorsalis</i>	Apple, Citrus, Loquat, Guava	Det	15
Guava fruit fly <i>Bactrocera correcta</i>	Fig, Guava, Peach	Det	5
Bamboo pit scale <i>Bambusaspis miliaris</i>	Bamboo	Qua	1
Snail <i>Bradybaena similaris</i>	Aquatic plants, Palms, Citrus, Ficus, Basil	Qua	59
Medfly <i>Ceratitis capitata</i>	Citrus spp., Guava, Peach	Det	5
Red wax scale <i>Ceroplastes rubens</i>	<i>Schefflera</i>	Qua	2

Pest Exclusion Activities

<u>Pest Intercepted</u> <u>Common Name/Genus Species</u>	<u>Material</u>	<u>Source*</u>	<u>Scope of Program</u> <u>Pest Interceptions</u>
Wax scale <i>Ceroplastes rusci</i>	<i>Ravenea rivularis</i>	Qua	1
Green garden looper <i>Chrysodeixis eriosoma</i>	Basil, Produce	Qua	4
Planthopper <i>Clastoptera sp.</i>	Basil	Qua	1
Green scale <i>Coccus viridis</i>	Ginger	Qua	1
Weevil <i>Curculio sp.</i>	Nut	Qua	1
Snail <i>Euglandina rosea</i>	Herbs	Qua	1
Coffee root mealybug <i>Geococcus coffeae</i>	Rhapis	Qua	2
Soil mealybug <i>Geococcus coffeae</i>	<i>Chamaedorea</i>	Qua	2
Cockroach <i>Graptoblatta notulata</i>	Orchids	Qua	1
Glassy-winged leafhopper <i>Homalodisca coagulata</i>	Tree	Public	1
Mining scale <i>Howardia biclavis</i>	Ficus, Plumeria	Qua	11
Black thread scale <i>Ischnaspis longirostris</i>	Areca palm	Qua	1
Snail <i>Lamellaxis sp.</i>	<i>Cycas revoluta</i>	Qua	2
Moth <i>Lineodes sp.</i>	Produce	Qua	2
Gypsy moth <i>Lymantria dispar</i>	Furniture, Ornamental tree	Qua, Det	4

Pest Exclusion Activities

<u>Pest Intercepted</u> <u>Common Name/Genus Species</u>	<u>Material</u>	<u>Source*</u>	<u>Scope of Program</u> <u>Pest Interceptions</u>
Lygaeid bug <i>Nysius</i> sp.	Basil, Produce	Qua	2
Snail <i>Opeas</i> sp. or near	Palms	Qua	3
Orchid weevil <i>Orchidophilus alternatus</i>	Ti	Qua	1
Ensign scale <i>Orthezia tillandsiae</i>	Spanish moss	Qua	1
Mirid bug <i>Orthotylus perkinsi</i>	Cut flowers, Ginger	Qua	2
Weevil <i>Oxydema</i> sp.	Ginger	Qua	2
Palm mealybug <i>Palmicultor palmarum</i>	<i>Neodypsis</i>	Qua	1
Nesting whitefly <i>Paraleyrodes minei</i>	Melaleuca, Citrus, Avocado	Nsy, Public	7
Big headed ant <i>Pheidole megacephala</i>	Basil, Cycas, Herbs, Cut flowers	Qua	9
Boxwood scale <i>Pinnaspis buxi</i>	Areca Palm, Ti	Qua	6
Lesser snow scale (dead) <i>Pinnaspis strachani</i>	Palm frond, <i>Cocos plumosa</i>	Qua	2
Lesser snow scale <i>Pinnaspis strachani</i>	Areca palm, Cut flowers	Qua	12
Pyriform scale <i>Protopulvinaria pyriformis</i>	Eugenia, Gardenia	Nsy, Public	3
Trilobe scale <i>Pseudaonidia trilobitiformis</i>	Areca palm	Qua	1
Magnolia white scale <i>Pseudaulacaspis cockerelli</i>	Cut flowers, Palms	Qua, Nsy	54

Pest Exclusion Activities

<u>Pest Intercepted</u> <u>Common Name/Genus Species</u>	<u>Material</u>	<u>Source*</u>	<u>Scope of Program</u> <u>Pest Interceptions</u>
Aglaonema mealybug <i>Pseudococcus</i> sp.	<i>Schefflera</i>	Qua	1
Green shield scale <i>Pulvinaria psidii</i>	Cut flowers, Ficus	Qua, Det, Nsy	8
Soil mealybug <i>Rhizoecus americanus</i>	Palms, Rhapis, Ficus	Qua	26
False powderpost beetle <i>Sinoxylon anale</i>	Pallets	Public	1
RIFA <i>Solenopsis invicta</i>	Herbs, Palms, Trailer	Qua	5
Fire ant <i>Solenopsis</i> sp.	Yucca	Qua	1
Two spotted leafhopper <i>Sophonia rufofascia</i>	Cut flowers, Herbs, Ti	Qua	4
Black headed ant <i>Tapinoma melanocephalum</i>	Rhapis	Qua	1
White footed ant <i>Technomyrmex albipes</i>	Cut flowers, Basil	Qua	26
Lantana lace bug <i>Teleonemia scrupulosa</i>	<i>Lantana camara</i>	Pub	1
Slug <i>Vaginulus plebeius</i>	<i>Dracaena</i>	Qua	1
Slug <i>Veronicella</i>	<i>Cycas revoluta</i> , <i>Musa</i> , <i>Dracaena</i> , Taro, <i>Aralia</i>	Qua	7
Cuban snail <i>Zachrysis provisoria</i>	Ficus, <i>Cycas</i> , <i>Dracaena</i>	Qua	11
Total			348

***Source:** Det: Detection Nsy: Nursery Qua: Quarantine



This report was possible only through the cooperation of all the nurserymen, growers, governmental and private agencies, and others who provided the information necessary for its production. A special acknowledgement and thank you to staff members Raymond Smith, for the pen-and-ink crop report cover, and to Miguel Angel Gonzalez and Julia Chen, for the report layout and for compiling and computerizing the statistics.



**Los Angeles County Agricultural Commissioner /
Weights and Measures Department
3400 La Madera Avenue
El Monte, California 91732**

