



AgEcon SEARCH
RESEARCH IN AGRICULTURAL & APPLIED ECONOMICS

The World's Largest Open Access Agricultural & Applied Economics Digital Library

This document is discoverable and free to researchers across the globe due to the work of AgEcon Search.

Help ensure our sustainability.

Give to AgEcon Search

AgEcon Search

<http://ageconsearch.umn.edu>

aesearch@umn.edu

*Papers downloaded from **AgEcon Search** may be used for non-commercial purposes and personal study only. No other use, including posting to another Internet site, is permitted without permission from the copyright owner (not AgEcon Search), or as allowed under the provisions of Fair Use, U.S. Copyright Act, Title 17 U.S.C.*

California Department of Food and Agriculture

Agricultural Commissioners' Crop Reports

Lake County

2010-2014



Lake County Department of Agriculture

2010 Crop Report



First day on the job.



COUNTY OF LAKE

Department of Agriculture

Department of Weights & Measures

883 Lakeport Blvd.

Lakeport CA 95453

Phone: (707) 263-0217

FAX: (707) 263-1052

July 25, 2011

Karen Ross, Secretary

California Department of Food and Agriculture

And

The Honorable Board of Supervisors of Lake County

It is my pleasure to present the Lake County Agricultural Report for the year 2010 in accordance with sections 2272 and 2279 of the California Agriculture Code. The gross value of Lake County agricultural production for 2010 was \$64,272,494. This is a decrease of 2% from 2009. This decrease is primarily due to declines in the wine grape and nursery industries.. **This report represents gross agricultural receipts and does not reflect production costs or net income to the producers.**

The gross value of wine grapes was \$35,619,806, a decrease of 7% from 2009. The total tonnage harvested increased by 2% and the total grape acreage was 8,383, an increase of 170 acres. The tons per acre were relatively unchanged; however, the price per ton decreased by 9%.

In 2010, the gross value of pears was \$19,086,251, an increase of 13% from 2009. The total production decreased 9% and total pear acreage was 2,138. Overall, prices per ton increased 25% and tonnage decreased 9%.

The gross value of walnuts was \$2,857,760, an increase of 20% from 2009 while production increased 3%. The price per ton increased 16% and acreage increased to 3,235 acres.

Increases were noted in miscellaneous fruit (6%), vegetable crops (1%), livestock and poultry products (80%), and forest products (207%). Livestock production decreased 10%, nursery production and field crops decreased by 16% each.

The gross value of pears in this report represents the value of the pears after they are packed and processed. The figures do not indicate the value of the pears at the time of harvest or the gross income of the producers. The gross values of all other commodities in this report represent the value of each commodity at the time of harvest.

I would like to thank our Deputy Agricultural Commissioner, Kris Eutenier, and our Secretary, Kristi Elsemore, for their efforts in compiling the information, providing the photographs, and working on the layout of the 2010 Crop Report. I wish to express my appreciation to the many individuals and organizations who contributed to making this report possible.

Respectfully submitted,

Steven Hajik

Steve Hajik

Agricultural Commissioner

Fruit and Nut Crops							
Commodity	Market Type	Year	Production (Tons)	Yield (Tons/Acre)	Returns (\$/Ton) ¹	Gross Value ¹	Bearing Acres
Wine Grapes							
Whites		2010	13,650	5	\$915 AVG	\$12,494,772	2,732
		2009	12,806	4.9	\$1,008 AVG	\$12,908,198	2,600
Reds		2010	18,488	3.5	\$1,250 AVG	\$23,125,034	5,207
		2009	18,817	3.6	\$1,357 AVG	\$25,542,222	5,115
Total All Wine Grapes		2010	32,138	4	\$1,108 AVG	\$35,619,806	7,939
		2009	31,623	4.1	\$1,216	\$38,450,420	7,715
Pears							
Bartlett² (Including Red)	Fresh	2010	19,728	17.8	\$729.00 AVG	\$14,384,780	
		2009	17,219 ⁵		\$640.00 AVG	\$11,020,160	
	Cannery	2010	11,669		\$253.00 AVG	\$2,955,010	
		2009	14,786 ⁵		\$239.00 AVG	\$3,533,854	
	Bi-Products⁴	2010	3,562		\$110.00 AVG	\$392,256	
		2009	4,468 ⁵		\$75.00 AVG	\$335,100	
Total Bartlett		2010	34,959	17.8	\$507.00 AVG	\$17,732,046	2048
		2009	36,473	17.5	\$408.00 AVG	\$14,889,114	2078
All Others² (Includes: Asian, Bosc, Comice & Seckel)	Fresh	2010	1,338		\$1,002.00 AVG	\$1,340,160	
		2009	1,930		\$796.00 AVG	\$1,536,272	
	Bi-Products⁴	2010	208		\$67.00 AVG	\$14,045	
		2009	817		\$27.00 AVG	\$22,054	
Total Other Red Bartlett 2009		2010	1,546	11.9	\$876.00 AVG	\$1,354,205	70
		2009	2,747	18.3	\$567.00 AVG	\$1,558,326	87
		2009	801	22.9	\$499.00 AVG	\$399,747	43
Total All Pears		2010	36,505	16.8	\$523.00 AVG	\$19,086,251	2,118
		2009	40,021	18.1	\$419.00 AVG	\$16,847,187	2,165
Walnuts							
Irrigated Walnuts		2010	809	0.7	\$2,120 AVG	\$1,714,656	1,240
		2009	785	0.9	\$1,820 AVG	\$1,428,700	858
Non-Irrigated Walnuts		2010	539	0.3	\$2,120 AVG	\$1,143,104	1,860
		2009	523	0.3	\$1,820 AVG	\$951,860	1,742
Total All Walnuts		2010	1,348	0.4	\$2,120 AVG	\$2,857,760	3,100
		2009	1,308	0.5	\$1,820 AVG	\$2,380,560	2,600
Miscellaneous Fruit and Nuts							
Olives		2010	27	1	\$400.00 AVG	\$10,800	27
Miscellaneous³		2010				\$48,641	12
		2009				\$55,870	17
Total Miscellaneous						\$59,441	39
Total All Fruits and Nuts		2010				\$57,623,258	13,196
		2009				\$57,734,037	12,497

¹ This is gross value and does not represent net return to the producer.

³ Includes Apples, Peaches, Strawberries and Melons.

² This is the FOB price which includes processing and Packing Costs.

⁴ Baby food was added to Bi-Products in 2009.

⁵ Red Bartlett numbers not included, see total below.

Fruit and Nut Acreage

Crop		Bearing Acres	Non-Bearing Acres	Total
Pears	Bartlett	2,048	20	2,068
	All Other	70	0	70
	Total	2,118	20	2,138
Wine Grapes	Reds	5,207	181	2,913
	Whites	2,732	262	5,469
	Total	7,939	443	8,382
Walnuts		3,100	135	3,235
Olives		27	5	32
Miscellaneous ¹		12	0	12
Total		13,196	603	13,799

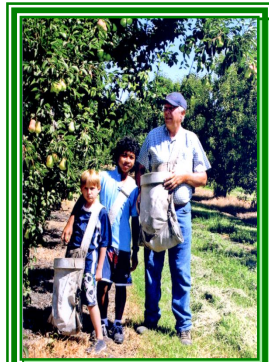
¹ Includes apples, peaches, strawberries, and melons.



"Fresh from grandma's tree."

Nursery Production

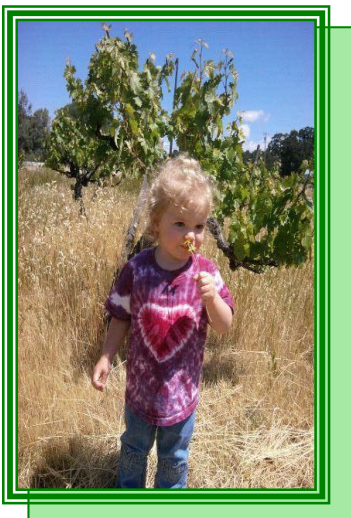
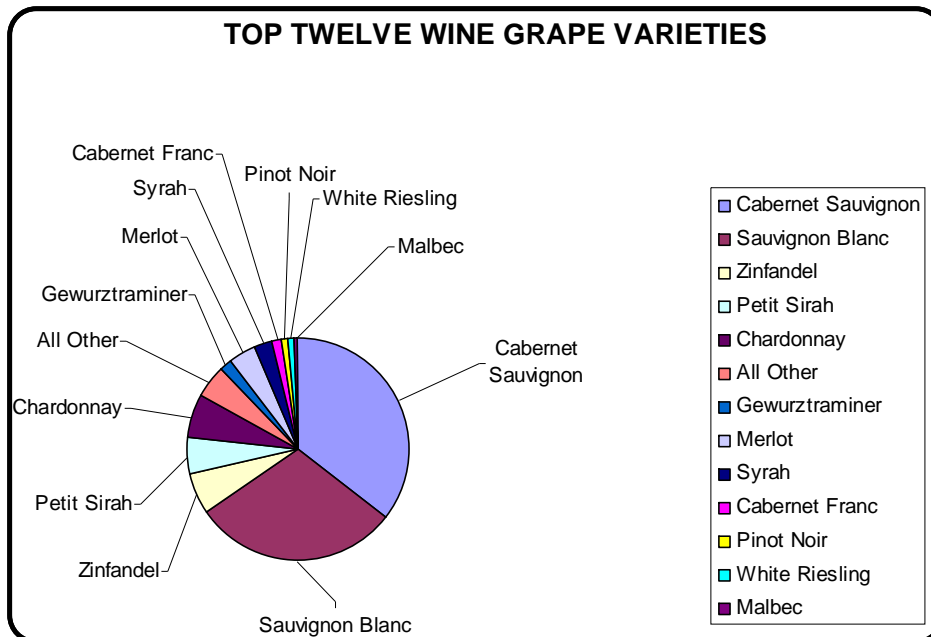
Year	Greenhouse (sq.ft.)	Field Acres	Value
2010	76,000	58	\$2,961,178
2009	76,350	73.5	\$3,533,133



"Farming is a family affair."

Top Wine Grape Varieties

Red and White	Returns/Tons	Production Tons	Total Value
Cabernet Sauvignon	\$1,287.07	11,393.3	\$14,663,975
Sauvignon Blanc	\$855.20	9608.7	\$ 8,217,360
Zinfandel	\$1,216.90	1,906.4	\$ 2,319,898
Petite Syrah	\$1,353.63	1,707.9	\$ 2,311,865
Chardonnay	\$901.80	2,091.6	\$ 1,886,205
Gewurztraminer	\$1,550.00	647.1	\$ 1,003,005
Merlot	\$797.42	1,223.9	\$ 975,962
Syrah	\$911.78	916.2	\$ 835,373
Cabernet Franc	\$1,433.76	414.8	\$ 594,724
Pinot Noir	\$1,577.40	220.8	\$ 348,290
White Riesling	\$1,607.91	301.4	\$ 321,868
Malbec	\$1,566.09	186.1	\$ 291,449
All Other Varieties	Varies	1,519.7	\$ 1,849,832



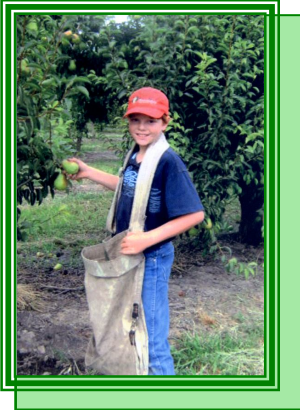
"It's fun in the vineyard."

All Other Grape Varieties (1% or Less) Includes:		
Carignane	Nebbiolo	Muscat Blanc
Primitivo	Muscat Orange	Viognier
Grenache	Counoise	Pinot Gris
Barbera	Sauvignon Musque	Semillon
Mataro	Touriga Nacional	Roussanne
Souzao	Trousseau	Pinot Blanc
Tinta Cao	Granache Blanc	Vermentino
Albarino	Marsanne	Petite Verdote
Tempranillo	Sangiovese	Montepulciano

Vegetable Crops

Commodity	Year	Acres	Value
Miscellaneous Vegetables ¹	2010	23	\$195,336
	2009	35	\$193,288

¹ Includes pumpkins, beans, sweet corn, garlic, herbs, peas, potatoes, squash, potatoes, etc.



"Hey dad, I think they're ready."



"Grandma's home canned pears. Yum!."

Organic¹ Farm Statistics

2010 Crops	Number of Farms	Acres	Value
Walnuts	61	1,778.00	
Wine Grapes	18	547.00	
Miscellaneous Vegetables	13	19.00	
Nursery	2	1.00	
Field, Seed and Pasture	6	50.00	
Miscellaneous Fruit	8	5.00	
Pears	5	100.00	
Total	113	2,500.00	\$4,024,813

¹ Registered Organic with the Lake County agricultural Commissioner

Commodity	Acres	Value
Organic Walnuts	1,778.00	\$942,051

Field & Seed Crops

Commodity	Year	Acreage	Returns (\$/Acre)	Value
Irrigated Pasture	2010	800	\$100.00	\$80,000
	2009	800	\$100.00	\$80,000
Range	2010	90,000	\$4.50	\$405,000
	2009	90,000	\$4.50	\$405,000
Miscellaneous ¹	2010	2,487		\$873,000
	2009	3,172		\$1,135,576
Total	2010	93,287		\$1,358,000
	2009	93,972		\$1,620,576

¹ Includes Wild Rice, Oat Hay, Alfalfa, Grass Hay, Hops and Grain.



"Okay, now put it right here."

Timber Harvest¹

Commodity	Year	MBF ²	Value ³
Miscellaneous	2010	3552	\$207,730.00
	2009	0	\$0.00

¹ Values furnished by the California State Board of Equalization

² Quantity of Timber cut and scaled (Thousand Board Feet)

³ Value of timber immediately before being cut.

Livestock Production

Commodity	Year	Number of Head	Total CWT ¹ (Live WT)	\$/CWT	Value
Cattle and Calves	2010	3,100	16,698	\$102	\$1,703,196
	2009	2,797	22,376	\$84.68	\$1,894,800
Miscellaneous ²	2010				\$42,056
	2009				\$35,856
Total	2010				\$1,745,252
	2009				\$1,971,212

¹ CWT = 100 lbs

² Includes goats, sheep, hogs, rabbits and meat poultry

Livestock and Poultry Products

Commodity	Year	Value
Miscellaneous ¹	2010	\$181,740
	2009	\$101,715

¹ Includes eggs, cheese, wool, honey and manure



"Just me and my buddy, dreaming of that blue ribbon."

Sustainable Agriculture Report

Biological Control

Pest	Agent/Mechanism	Scope of Program
Bull Thistle	Gall Fly	Widely Distributed
Italian Thistle	Seed Head Weevil	Generally Distributed
Klamath Weed	Klamath Weed Beetle	Widely Distributed
Yellow Star Thistle	Gall Fly	Widely Distributed
	Seed Head Weevil	Generally Distributed
	Flower Weevil	Generally Distributed
	Hairy Weevil	Generally Distributed
	Peacock Fly	Widely Distributed
Red Gum Lerp Psyllid	Wasp	Widely Distributed
Puncture Vine	Stem Boring Weevil	Generally Distributed

Pest Eradication

The following pests were under active control and eradication during the year: Dalmatian Toadflax, Scotch Thistle, Plumeless Thistle, Artichoke Thistle, Purple Star Thistle, Oblong Spurge, Canada Thistle, Skeleton Weed, Dyers Toad and Hydrilla.

Hydrilla is a CDFA program supported by the Lake County Department of Agriculture

Pest Exclusion

Packages Profiled	Program Hours	Rejected Packages
2,137	999	1

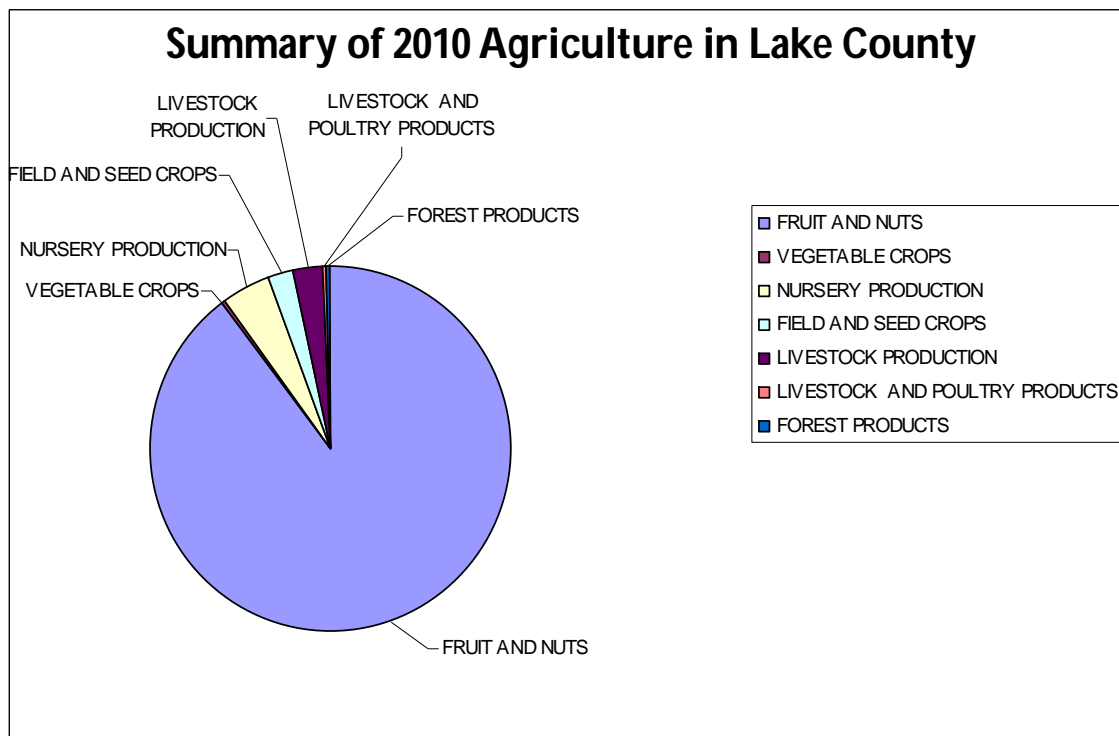
Pest Detection

Grapevine Mealy Bug			European Grapevine Moth		
Traps Deployed	Program Hours		Traps Deployed	Program Hours	
170	136		363	803	
Exotic Insect Pests			Glassy Winged Sharpshooter Nursery Shipments		
Traps Deployed	Program Hours		Number of Inspections	Program Hours	
294	1,584		40	175.5	
Light Brown Apple Moth			Glassy Winged Sharpshooter Trapping		
Traps Deployed	Nursery traps	Program Hours	Traps Deployed	Nursery traps	Program Hours
103	20	215	103	20	589.5

Exotic pests include Mediterranean Fruit Fly, Oriental Fruit Fly, Melon Fly, Japanese Beetle and Gypsy moth

Summary of Production for 2010

Commodity	Year	Value
Fruit and Nuts	2010	\$57,623,258
	2009	\$57,734,037
Field and Seed Crops	2010	\$1,358,000
	2009	\$1,620,576
Livestock Production	2010	\$1,745,252
	2009	\$197,212
Forest products	2010	\$207,730
	2009	\$0
Vegetable Crops	2010	\$195,336
	2009	\$193,288
Livestock and Poultry Products	2010	\$181,740
	2009	\$101,715
Nursery Production	2010	\$2,961,178
	2009	\$3,533,133
Total	2010	\$64,272,494
	2009	\$65,153,961



Lake County Board of Supervisors

District 1: Jim Comstock

District 2: Jeff Smith

District 3: Denise Rushing

District 4: Anthony Farrington

District 5: Rob Brown



Lake County Agricultural Staff 2010



Top row left to right: Lynn Eutenier, Drew Tritchler, Craig Wetherbee, Steven Hajik, Steve Woods.
Bottom row left to right: Kristine Eutenier, Katherine Blyleven, Kristi Elsemore, Alice McCombs.

Agricultural Commissioner, Sealer of Weights and Measures

Steven Hajik

Deputy Agricultural Commissioner, Deputy Sealer of Weights and Measures

Kristine Eutenier

Agricultural Biologists, Weights and Measures Inspectors

Andrew Tritchler

Katherine Blyleven

Craig Wetherbee

Secretary

Kristi Elsemore

Agricultural Aides, Insect Trappers

Lynn Eutenier

Steve Woods

Alice McCombs

Federal Wildlife Services Staff

Larry Johnson

Greg Wamsley



Lake County Department of Agriculture

2011 Crop Report



Photo: Lyons Ranch on Gaddy Lane



COUNTY OF LAKE
Department of Agriculture
Department of Weights & Measures
883 Lakeport Blvd.
Lakeport CA 95453
Phone: (707) 263-0217
Fax: (707) 263-1052

STEVEN HAJIK
Agricultural Commissioner
Sealer of Weights & Measures

July 17, 2012

Karen Ross, Secretary
California Department of Food and Agriculture
And
The Honorable Board of Supervisors of Lake County

It is my pleasure to present the Lake County Agricultural Report for the year 2011 in accordance with sections 2272 and 2279 of the California Agriculture Code. The gross value of Lake County agricultural production for 2011 was \$66,824,284. This is an increase of 4% from 2010. This increase is primarily due to increases in the wine grape and walnut industries. **This report represents gross agricultural receipts and does not reflect production costs or net income to the producers.**

The gross value of wine grapes was \$39,993,333, an increase of 12% from 2010. The total tonnage harvested increased by 6% and the total grape acreage was 8,338, a decrease of 44 acres. The tons per acre were relatively unchanged; however, the price per ton increased by 6%.

In 2011, the gross value of pears was \$18,977,108, a decrease of 1% from 2010. The total production increased by 7,770 tons and total pear acreage was 2,170. Overall, prices per ton decreased 18% and tonnage increased 21%.

The gross value of walnuts was \$3,105,000, an increase of 8% from 2010 while production decreased 8%. The price per ton increased 18% and acreage increased to 3,525 acres.

Increases were noted in vegetable crops (51%), livestock production (12%), field crops (9%), and miscellaneous fruit (3%). There were decreases in forest products (78%), nursery production (73%), and livestock and poultry products (38%).

The gross value of pears in this report represents the value of the pears after they are packed and processed. The figures do not indicate the value of the pears at the time of harvest or the gross income of the producers. The gross values of all other commodities in this report represent the value of each commodity at the time of harvest.

I would like to thank our Deputy Agricultural Commissioner, Kris Eutenier, Craig Wetherbee, Agricultural Biologist II, and our Secretary, Kristi Elsemore, for their efforts in compiling the information, providing the photographs, and working on the layout of the 2011 Crop Report. I wish to express my appreciation to the many individuals and organizations who contributed to making this report possible.

Respectfully submitted,

Steven Hajik

Steve Hajik
Agricultural Commissioner

Fruit and Nut Crops							
Commodity	Market Type	Year	Production (Tons)	Yield (Tons/Acre)	Returns ¹ (\$/Ton) AVG	Gross Value ²	Bearing Acres
Wine Grapes							
Whites		2011	12,883	4.5	\$937	\$12,071,371	2,853
		2010	13,650	5.0	\$915	\$12,494,772	2,732
Reds		2011	21,121	4.0	\$1,322	\$27,921,962	5,331
		2010	18,488	3.5	\$1,250	\$23,125,034	5,207
Total All Wine Grapes		2011	34,004	4.1	\$1,176	\$39,993,333	8,184
		2010	32,138	4.0	\$1,108	\$35,619,806	7,939
Pears³							
Bartlett (Including Red)	Fresh	2011	21,910		\$638	\$13,978,580	
		2010	19,728		\$729	\$14,384,780	
	Cannery	2011	14,075		\$220	\$3,096,500	
		2010	11,669		\$253	\$2,955,010	
	By-products	2011	6,015		\$61	\$366,915	
		2010	3,562		\$110	\$392,256	
Total Bartlett		2011	42,000	20.5	\$406	\$17,441,995	2,048
		2010	34,959	17.8	\$507	\$17,732,046	2,048
All Others (Includes: Asian, Bosc, Comice & Seckel)	Fresh	2011	1,719		\$883	\$1,517,877	
		2010	1,338		\$1,002	\$1,340,160	
	By-products	2011	556		\$31	\$17,236	
		2010	208		\$67	\$14,045	
Total Other		2011	2,275	20.7	\$675	\$1,535,113	110
		2010	1,546	11.9	\$876	\$1,354,205	70
Total All Pears		2011	44,275	20.5	\$429	\$18,977,108	2,158
		2010	36,505	16.8	\$523	\$19,086,251	2,118
Walnuts							
Irrigated Walnuts		2011	773	0.6	\$2,500	\$1,932,500	1,288
		2010	809	0.7	\$2,120	\$1,714,656	1,240
Non-Irrigated Walnuts		2011	469	0.24	\$2,500	\$1,172,500	1,932
		2010	539	0.3	\$2,120	\$1,143,104	1,860
Total All Walnuts		2011	1,242	0.4	\$2,500	\$3,105,000	3,220
		2010	1,348	0.4	\$2,120	\$2,857,760	3,100
Miscellaneous Fruit and Nuts							
Olives		2011	29	1.0	\$510	\$14,790	29
		2010	27	1.0	\$400	\$10,800	27
Miscellaneous⁴		2011				\$46,616	18
		2010				\$48,641	12
Total Miscellaneous		2011				\$61,406	47
Total All Fruits and Nuts		2011				\$62,136,847	13,609
		2010				\$57,623,258	13,196

¹ Average price per ton is calculated from gross value. Values in 'Total' lines represent weighted averages.

² Gross value does not represent net return to the producer.

³ Pear gross values include processing and packaging costs.

⁴ Includes apples, peaches, strawberries and melons.

Fruit and Nut Acreage

Crop		Bearing Acres	Non-Bearing Acres	Total Acres
Pears	Bartlett	2,048	12	2,060
	All Other	110	0	110
	Total	2,158	12	2,170
Wine Grapes	Reds	5,331	129	5,460
	Whites	2,853	25	2,878
	Total	8,184	154	8,338
Walnuts		3,220	305	3,525
Olives		29	5	34
Miscellaneous ¹		18	0	18
Total		13,609	476	14,085

¹ Includes apples, peaches, strawberries, and melons.



Photo: Hill Creek Ranch along Highway 29 near Kelseyville

Nursery Production

Year	Greenhouse (sq.ft.)	Field Acres	Value
2011	18,000	22	\$793,107
2010	76,000	58	\$2,961,178

Top Wine Grape Varieties

Red and White	Production Tons	Average Returns/Ton ¹	Total Value
Cabernet Sauvignon	13,938	\$1,366	\$19,036,242
Sauvignon Blanc	9,605	\$909	\$8,733,458
Petite Syrah	1,786	\$1,400	\$2,500,263
Zinfandel	1,891	\$1,148	\$2,170,447
Chardonnay	1,454	\$929	\$1,351,327
Syrah	1,039	\$1,133	\$1,177,031
Merlot	1,082	\$910	\$984,321
Gewurztraminer	520	\$1,551	\$806,620
All Other Varieties *	2,689	Varies	\$3,233,624

¹ Return/Ton calculated from Total Value and Production Tons. Rounded to nearest whole dollar.

* All Other Grape Varieties (1% or less) Includes:

Cinsaut	Counoise	Muscat Blanc	Pinot Blanc
Primitivo	Sauvignon Musque	Viognier	Vermentino
Grenache	Touriga Nacional	Pinot Gris	Grenache Blanc
Barbera	Trousseau	Semillon	Albarino
Mataro	Souzao	Petit Verdot	Marsanne
Nebbiolo	Malbec	Roussanne	
Muscat Orange	Tinta Cao	Tempranillo	

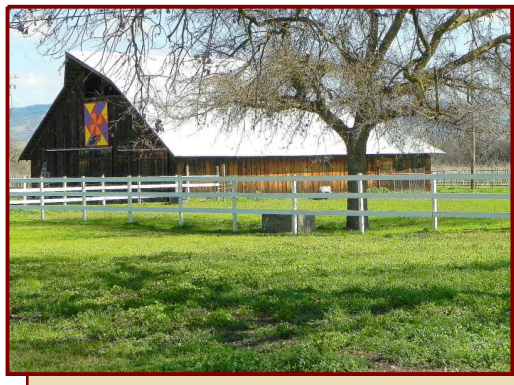
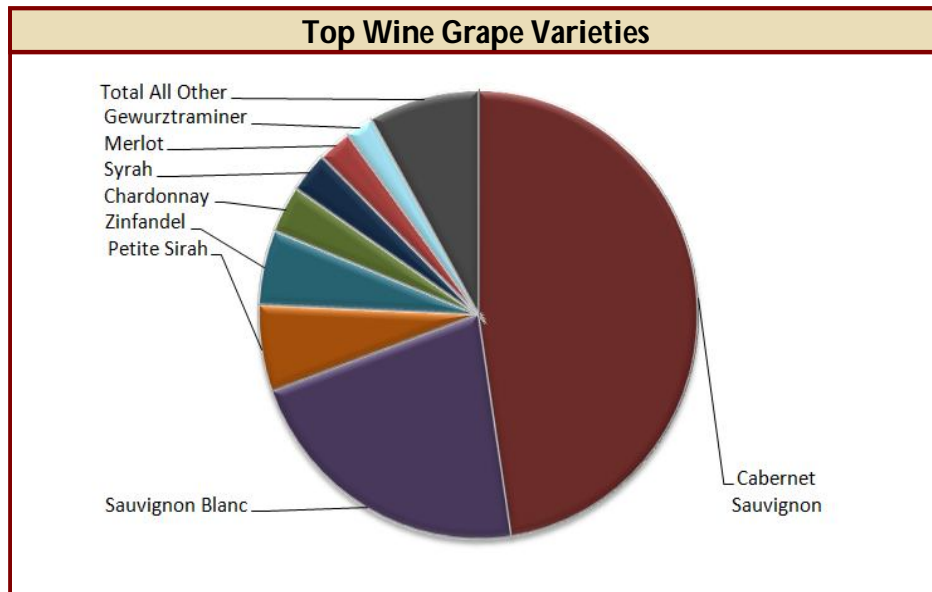


Photo: Gaddy Ranch on Soda Bay Road in Kelseyville

Organic¹ Farm Statistics

2011 Crops	Number of Farms	Acres	Value
Walnuts	63	1,588	
Wine Grapes	20	659	
Miscellaneous Vegetables	14	13	
Field, Seed and Pasture	4	440	
Miscellaneous Fruit	9	5	
Pears	4	121	
Olives	3	7	
Poultry	1	4	
Total	118	2,837	\$4,546,335

¹ Registered Organic with the Lake County Agricultural Commissioner

Organic Walnuts	63	1,588	\$1,115,401
------------------------	-----------	--------------	--------------------



Photo: Saderlund Ranch on Renfro Drive, Kelseyville. Built circa 1900.

Vegetable Crops

Commodity	Year	Acres	Value
Miscellaneous Vegetables	2011	20	\$295,894
	2010	23	\$195,336

¹ Includes pumpkins, beans, sweet corn, garlic, wheat grass, herbs, peas, potatoes, squash, etc.

Field & Seed Crops

Commodity	Year	Acreage	Returns (\$/Acre)	Value
Irrigated Pasture	2011	700	\$100	\$70,000
	2010	800	\$100	\$80,000
Range	2011	90,000	\$5.00	\$450,000
	2010	90,000	\$4.50	\$405,000
Miscellaneous ¹	2011	2,363	Varies	\$960,300
	2010	2,487	Varies	\$873,000
Total	2011	93,063		\$1,480,300
	2010	93,972		\$1,358,000

¹ Includes wild rice, oat hay, alfalfa, grass hay, hops and grain.



Timber Harvest¹

Commodity	Year	MBF ²	Value ³
Miscellaneous	2011	362	\$45,915
	2010	3,552	\$207,730

¹ Values furnished by California State Board of Equalization.

² Quantity of timber cut and scaled (thousand board feet).

³ Value of timber immediately before being cut.

Livestock Production

Commodity	Year	Number of Head	Total CWT (Live WT)	\$/CWT ²	Value
Cattle and Calves	2011	3,200	17,199	\$110	\$1,891,890
	2010	3,100	16,698	\$102	\$1,703,196
Miscellaneous ¹	2011				\$67,210
	2010				\$42,056
Total	2011				\$1,959,100
	2010				\$1,745,252

¹ Includes goats, sheep, hogs, rabbits and meat poultry

² CWT = 100 lbs.



Livestock and Poultry Products

Commodity	Year	Value
Miscellaneous ¹	2011	\$113,121
	2010	\$181,740

¹ Includes eggs, cheese, wool, honey and manure



Sustainable Agriculture Report

Biological Control

Pest	Agent/Mechanism	Scope of Program
Bull Thistle	Gall Fly	Widely Distributed
Italian Thistle	Seed Head Weevil	Generally Distributed
Klamath Weed	Klamath Weed Beetle	Widely Distributed
Yellow Star Thistle	Gall Fly	Widely Distributed
	Seed Head Weevil	Generally Distributed
	Flower Weevil	Generally Distributed
	Hairy Weevil	Generally Distributed
	Peacock Fly	Widely Distributed
Red Gum Lerp Psyllid	Wasp	Widely Distributed
Puncture Vine	Stem Boring Weevil	Generally Distributed

Pest Eradication

The following pests were under active control and eradication during the year: Dalmatian Toadflax, Scotch Thistle, Plumeless Thistle, Artichoke Thistle, Purple Star Thistle, Oblong Spurge, Canada Thistle, Skeleton Weed, Dyers Woad and Hydrilla.

Hydrilla is a CDFA program supported by the Lake County Department of Agriculture

Pest Exclusion

Pest Exclusion inspections are conducted daily.

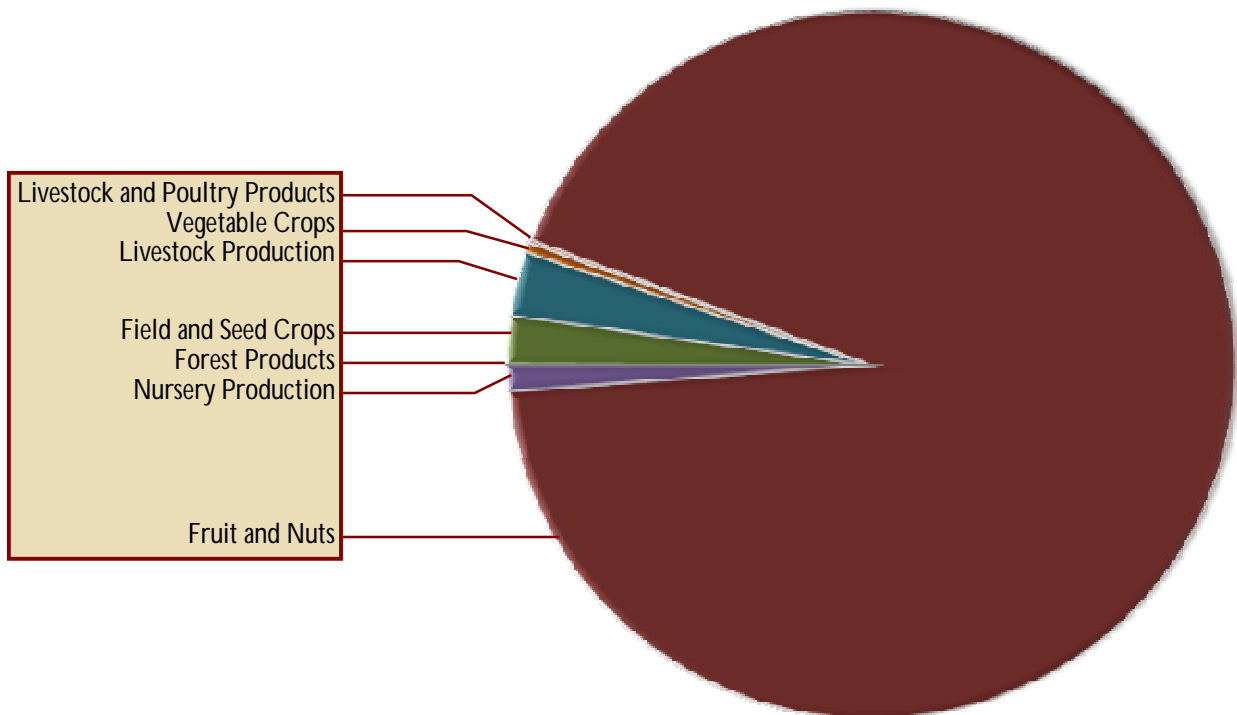
Inspections	Packages Inspected	Program Hours
256	993	326.5

Pest Detection

Grapevine Mealy Bug			European Grapevine Moth		
Traps Deployed	Program Hours		Traps Deployed	Program Hours	
172	125		367	872	
Exotic Insect Pests			Glassy Winged Sharpshooter Nursery Shipments		
Traps Deployed	Program Hours		Number of Inspections	Program Hours	
294	946		17	57	
Light Brown Apple Moth			Glassy Winged Sharpshooter Trapping		
Traps Deployed	Nursery traps	Program Hours	Traps Deployed	Nursery traps	Program Hours
103	20	134	103	20	620

Summary of Production for 2011

Commodity	Year	Value
Fruit and Nuts	2011	\$62,136,847
	2010	\$57,623,258
Field and Seed Crops	2011	\$1,480,300
	2010	\$1,358,000
Livestock Production	2011	\$1,959,100
	2010	\$1,745,252
Forest products	2011	\$45,915
	2010	\$207,730
Vegetable Crops	2011	\$295,894
	2010	\$195,336
Livestock and Poultry Products	2011	\$113,121
	2010	\$181,740
Nursery Production	2011	\$793,107
	2010	\$2,961,178
Total	2011	\$66,824,284
	2010	\$64,272,494

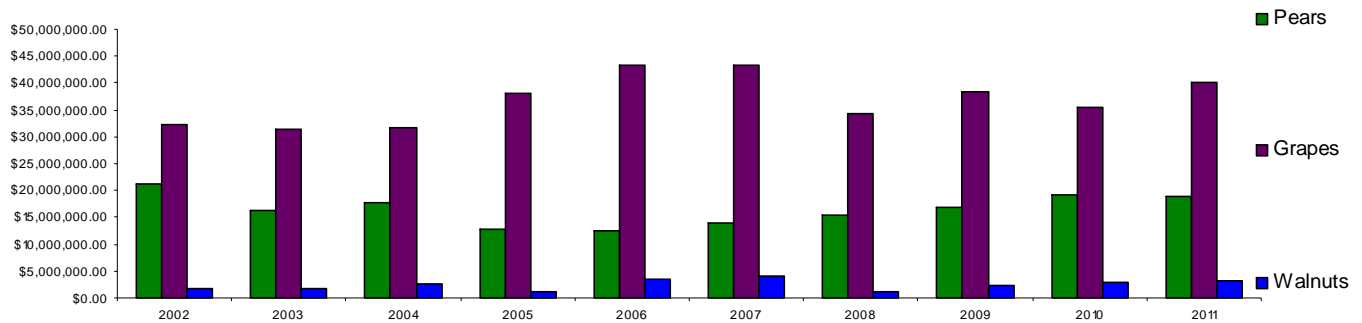


5 Year Value Comparison

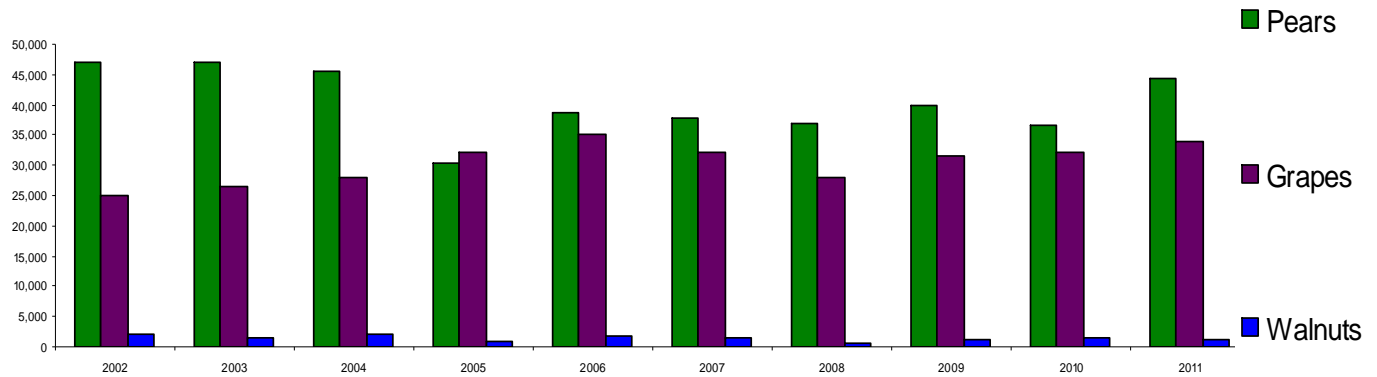
Year	Fruit & Nut	Livestock Production	Livestock & Poultry Product	Nursery Production	Vegetable Production	Field & Seed Crops	Total Value ¹
2011	\$62,136,847	\$1,959,100	\$113,121	\$793,107	\$295,894	\$1,480,300	\$66,824,284
2010	\$57,623,258	\$1,745,252	\$181,740	\$2,961,178	\$195,336	\$1,358,000	\$64,272,494
2009	\$57,734,037	\$1,971,212	\$101,715	\$3,533,133	\$193,288	\$1,620,576	\$65,153,961
2008	\$51,062,217	\$1,895,400	\$250,739	\$5,774,193	\$219,767	\$1,984,500	\$61,186,816
2007	\$61,595,000	\$2,512,537	\$146,105	\$5,112,004	\$235,500	\$2,266,375	\$72,670,221

¹ Total value includes Forest Products when applicable.

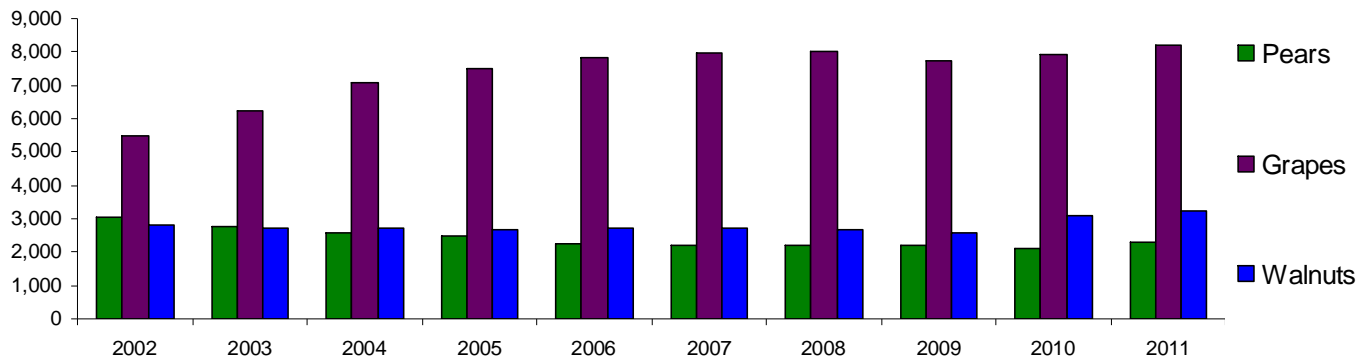
10 Year Crop Value Comparison



10 Year Crop Tonnage Comparison



10 Year Crop Acreage Comparison



Lake County Quilt Trail

The Quilt Trail project places painted squares on visible barns and buildings in Lake County. It's an agricultural and tourism project designed to promote and celebrate our community pride.

The photos we have included in this report show a few of the many squares already in place. We have chosen some of the older family farms and well known businesses in Lake County to showcase. If you find yourself in Lake County, take some time to follow the trail and see what you'll discover. The map and descriptions of the locations can be found online at www.lakecountyquilttrail.com.



Photos (Clockwise from Top-Left): Stokes Ladder Company (One of only a handful of American made ladders), Adobe Creek Pear Packing Shed, Old Brick Tavern on Main Street in Kelseyville (Established in 1872), Mount Konocti Winery.

Lake County Board of Supervisors

District 1: Jim Comstock

District 2: Jeff Smith

District 3: Denise Rushing

District 4: Anthony Farrington

District 5: Rob Brown



Universities attended by
Agricultural Staff

Agricultural Commissioner

Sealer of Weights and Measures

Steven Hajik

Agricultural Biologists

Weights and Measures Inspectors

Drew Tritchler

Katherine Blyleven

Craig Wetherbee

Secretary

Kristi Elsemore

Wildlife Services Staff

Larry Johnson

Greg Wamsley

Deputy Agricultural Commissioner

Deputy Sealer of Weights and Measures

Kristine Eutenier

Agricultural Aides

(Insect Trappers)

Lynn Eutenier

Steve Woods

Alice McCombs



Lake County Department of Agriculture

2012 CROP REPORT





COUNTY OF LAKE

Department of Agriculture

Department of Weights & Measures

883 Lakeport Blvd.

Lakeport CA 95453

Phone: (707) 263-0217

FAX: (707) 263-1052

STEVEN HAJIK

Agricultural Commissioner

Sealer of Weights & Measures

August 13, 2013

Karen Ross, Secretary

California Department of Food and Agriculture

And

The Honorable Board of Supervisors of Lake County

It is my pleasure to present the Lake County Agricultural Report for the year 2012 in accordance with sections 2272 and 2279 of the California Agriculture Code. The gross value of Lake County agricultural production for 2012 was \$84,842,411. This is an increase of 27% from 2011. This increase is primarily due to increases in the wine grape, pear, and walnut industries. **This report represents gross agricultural receipts and does not reflect production costs or net income to the producers.**

The gross value of wine grapes was \$47,879,568, an increase of 20% from 2011. The total tonnage harvested increased by 3% and the total grape acreage was 8,392, an increase of 54 acres. The tons per acre increased slightly; however, the price per ton increased by 15%.

In 2012, the gross value of pears was \$24,128,000, an increase of 27% from 2011. The total production decreased by 7,388 tons, but the price per ton increased by 50%. The total pear acreage was 2,141, a decrease of 28 acres.

The gross value of walnuts was \$6,534,400, an increase of 110% from 2011 and production increased 64%. The price per ton increased 27% and acreage increased to 3,671 acres.

Increases were noted in nursery production (82%), livestock production (22%), field crops (26%), miscellaneous fruit (100%), and livestock and poultry products (31%). The only decrease was in forest products (83%).

The gross value of pears in this report represents the value of the pears after they are packed and processed. The figures do not indicate the value of the pears at the time of harvest or the gross income of the producers. The gross values of all other commodities in this report represent the value of each commodity at the time of harvest.

I would like to thank our Deputy Agricultural Commissioner, Kris Eutenier and our Secretary, Kristi Elsemore, for their efforts in compiling the information, providing the photographs, and working on the layout of the 2012 Crop Report. I wish to express my appreciation to the many individuals and organizations who contributed to making this report possible.

Respectfully submitted,

Steven Hajik

Steve Hajik

Agricultural Commissioner

FRUIT AND NUT CROPS

COMMODITY	MARKET TYPE	YEAR	PRODUCTION (TONS)	YIELD (TONS / ACRE)	RETURNS \$ / Ton ^{1,4}	GROSS VALUE ¹	BEARING ACRES
WINE GRAPES							
WHITES		2012	12,632	4.5	\$1,063	\$13,427,816	2,844
		2011	12,883	4.5	\$937	\$12,071,371	2,853
REDS		2012	22,184	4.2	\$1,553	\$34,451,752	5,312
		2011	21,121	4	\$1,322	\$27,921,962	5,331
TOTAL ALL WINE GRAPES		2012	34,816	4.3	\$1,375	\$47,879,568	8,156
		2011	34,004	4.1	1,176	\$39,993,333	8,184
PEARS							
BARTLETT ² INCLUDING RED	FRESH	2012	21,527		\$869	\$18,704,533	
		2011	21,910		\$638	\$13,978,580	
	CANNERY	2012	11,184		\$326	\$3,651,321	
		2011	14,075		\$220	\$3,096,500	
	BY- PRODUCTS	2012	2,890		\$170	\$491,701	
		2011	6,015		\$61	\$366,915	
TOTAL BARTLETT		2012	35,601	17.6	\$642	\$22,847,555	2,020
		2011	42,000	20.5	\$406	\$17,441,995	2,048
All Other ² (INCLUDES; ASIAN, BOSCH, COMICE, SECKEL)	FRESH	2012	1,030		\$1,231	\$1,268,185	
		2011	1,719		\$883	\$1,517,877	
	BY-PRODUCTS	2012	256		\$48	\$12,260	
		2011	556		\$31	\$17,236	
TOTAL OTHER		2012	1,286	11.7	\$996	\$1,280,445	110
		2011	2,275	20.7	\$675	\$1,535,113	110
TOTAL ALL PEARS		2012	36,887	17.3	\$654	\$24,128,000	2,130
		2011	44,275	20.5	\$429	\$18,977,108	2,158
WALNUTS							
TOTAL ALL WALNUTS		2012	2,042	0.62	\$3,200	\$6,534,400	3,291
		2011	1,242	0.40	\$2,500	\$3,105,000	3,220
MISCELLANEOUS FRUITS & NUTS							
Olives		2012	42	1	\$425	\$26,850	39
		2011	29	1	\$400	\$10,800	27
MISCELLANEOUS ³		2012				\$66,000	16
		2011				\$46,616	18
TOTAL MISCELLANEOUS		2012				\$92,850	55
		2011				\$46,616	18
TOTAL ALL FRUIT AND NUTS		2012				\$78,634,818	13,632
		2011				\$62,136,847	13,609

¹ THIS IS GROSS VALUE AND DOES NOT REPRESENT NET RETURN TO THE PRODUCER.

² THIS IS THE FOB PRICE WHICH INCLUDES PROCESSING AND PACKING COSTS.

³ INCLUDES APPLES, PEACHES, STRAWBERRIES, MELONS

⁴ Numbers are weighted averages

Fruit and Nut Acreage				
Crop		Bearing Acres	Non- Bearing Acres	Total
Pears	Bartlett	2,020	12	2,032
	All Other Pears	110	0	110
	Total	2,130	12	2,142
Wine Grapes	Whites	2,844	67	2,911
	Reds	5,312	169	5,481
	Total	8,156	236	8,392
Walnuts		3,291	380	3,671
Olives		39	20	59
Miscellaneous ¹		16	0	16
TOTAL		13,632	648	14,280

¹ Includes Apples, Peaches, Strawberries, Melons, Etc



NURSERY PRODUCTION			
YEAR	GREENHOUSE SQ. FEET	FIELD ACRES	VALUE
2012	18,300	38	\$1,443,295
2011	18,000	22	\$793,107

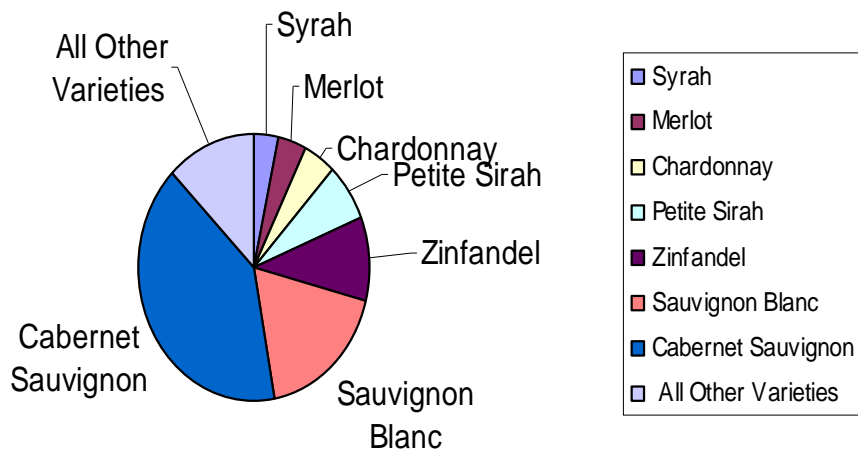
TOP WINE GRAPE VARIETIES

VARIETY	TONS	RETURNS/ TON	TOTAL RETURNS
Syrah	1,256	\$1,317	\$1,654,415
Merlot	1,595	\$1,201	\$1,915,595
Chardonnay	1,768	\$1,211	\$2,139,859
Petite Sirah	2,118	\$1,551	\$3,285,483
Zinfandel	3,239	\$1,518	\$4,916,043
Sauvignon Blanc	8,592	\$1,005	\$8,635,061
Cabernet Sauvignon	11,992	\$1,615	\$19,366,919
All Other Varieties	4,256	Varies	\$5,966,193

ALL OTHER WINE GRAPE VARIETIES

Mataro	Primitivo	Trousseau	Vermentino
Tempranillo	Roussane	Counoise	Carignane
Petit Verdot	Marsanne	Gamay	Nebbiolo
Grenache	Barbera	Pinot Blanc	Souzao
Sauvignon Musque	Viognier	Touriga Nacional	Tina Cao
Tinta Madeira	Albarino	Alicante Bouschet	Carmenere
Gewurztraminer	Malbec	White Riesling	Cabernet Franc
Pinot Noir	Semillon	Muscat Blanc	Pinot Gris

Top Wine Grape Varieties

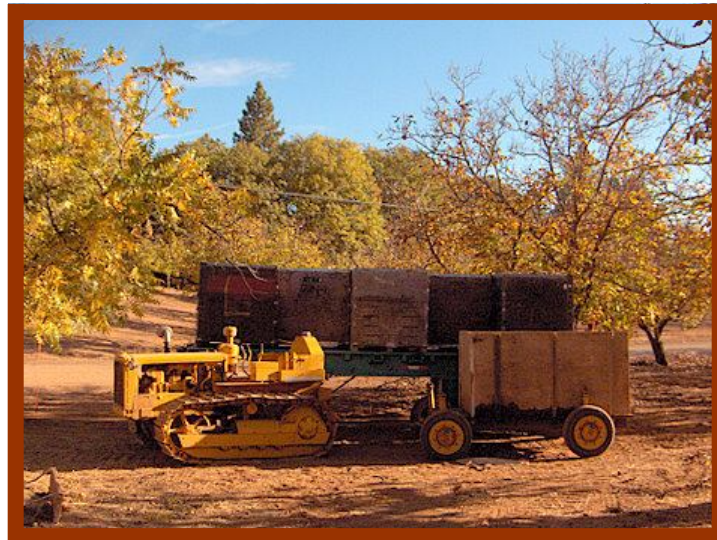


ORGANIC ¹ FARMING STATISTICS

CROPS 2012	NUMBER OF FARMS	ACRES	VALUE
WALNUTS	55	1,860	
WINE GRAPES	19	682	
MISCELLANEOUS VEGETABLES	13	16	
PEARS	4	134	
MISCELLANEOUS FRUIT	5	3	
FIELD, SEED AND PASTURE	2	19	
OLIVES	1	5	
POULTRY	1	4	
TOTAL	100	2,723	\$ 4,553,657

¹ REGISTERED ORGANIC WITH THE LAKE COUNTY AGRICULTURAL COMMISSIONER

ORGANIC WALNUTS	ACRES	VALUE
	1,860	\$1,101,384



VEGETABLE CROPS

COMMODITY	YEAR	ACRES	VALUE
MISCELLANEOUS VEGETABLES ¹	2012	30	\$344,182
	2011	20	\$295,894

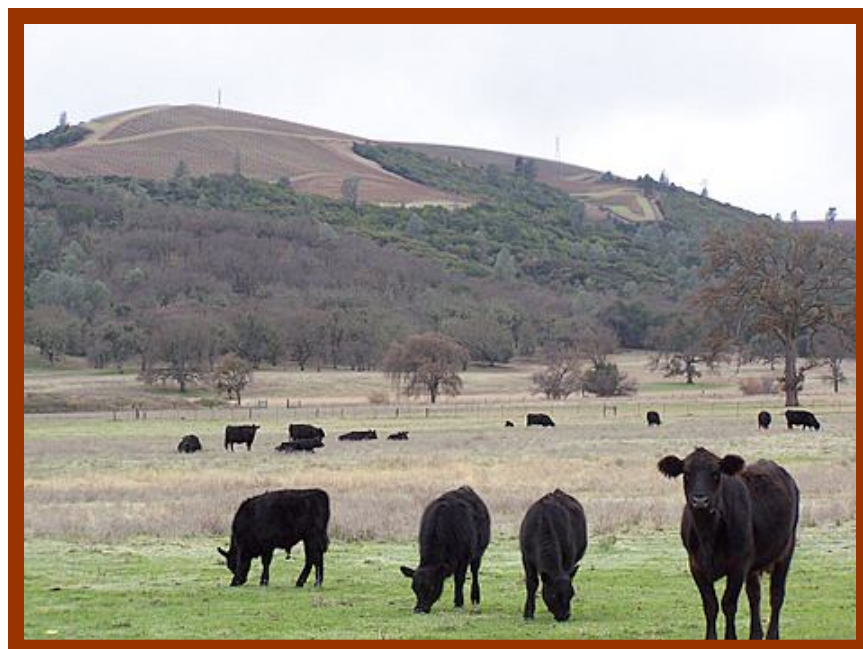
¹ INCLUDES PUMPKINS, BEANS, SWEET CORN, GARLIC, HERBS, PEAS, POTATOES, SQUASH, TOMATOES, ETC.

LIVESTOCK PRODUCTION

COMMODITY	YEAR	NO. OF HEAD	TOTAL CWT ¹ (LIVE WT.)	\$ PER CWT	VALUE
CATTLE AND CALVES	2012	3,220	17,388	\$125	\$2,173,500
	2011	3,200	17,199	\$110.00	\$1,891,890
MISCELLANEOUS²	2012				\$217,055
	2011				\$67,210
TOTALS	2012				\$2,390,555
	2011				\$1,959,100
¹ CWT = 100 LBS					
² INCLUDES GOATS, SHEEP, HOGS, RABBITS, MEAT CHICKENS, AND OTHER MEAT BIRDS					

LIVESTOCK AND POULTRY PRODUCTS

	YEAR				Value
MISCELLANEOUS¹	2012				\$149,321
	2011				\$113,121
¹ INCLUDES EGGS, CHEESE, WOOL, HONEY AND MANURE					

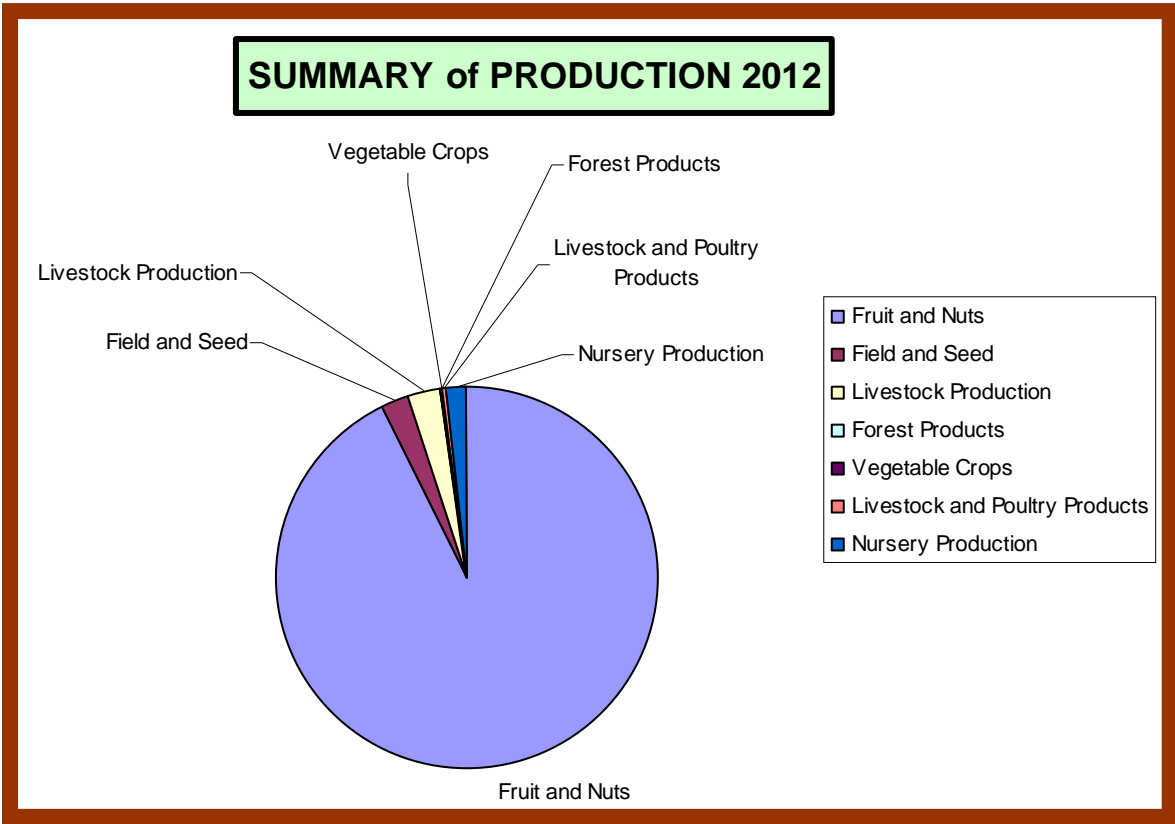


FIELD AND SEED CROPS				
COMMODITY	YEAR	ACREAGE	\$ / UNIT	VALUE
IRRIGATED PASTURE	2012	700	\$100.00	\$70,000
	2011	700	\$100.00	\$70,000
RANGE	2012	90,000	\$4.50	\$405,000
	2011	90,000	\$5.00	\$450,000
MISCELLANEOUS ¹	2012	1,939	Varies	\$1,397,340
	2011	2,363	Varies	\$960,300
¹ INCLUDES WILD RICE, OAT HAY, ALFALFA, GRASS HAY, HOPS AND GRAIN				
TOTAL	2012	92,639		\$1,872,340
	2011	93,063		\$1,480,300



TIMBER HARVEST ¹			
ITEM	YEAR	MBF ²	VALUE ³
TIMBER YIELD	2012	56	\$7,900
	2011	362	\$45,915
¹ Values furnished by the California State Board of Equalization			
² Quantity of timber cut and scaled (Thousand Board Feet)			

Summary of Production		
Fruit and Nuts	2012	\$78,634,818
	2011	\$62,136,847
Field and Seed	2012	\$1,872,340
	2011	\$1,480,300
Livestock Production	2012	\$2,390,555
	2011	\$1,959,100
Forest Products	2012	\$7,900
	2011	\$45,915
Vegetable Crops	2012	\$344,182
	2011	\$295,894
Livestock and Poultry Products	2012	\$149,321
	2011	\$113,121
Nursery Production	2012	\$1,443,295
	2011	\$793,107
Total	2012	\$84,842,411
	2011	\$66,824,284



SUSTAINABLE AGRICULTURE REPORT

BIOLOGICAL CONTROL

BIOLOGICAL CONTROL IS THE DELIBERATE USE OF NATURAL ENEMIES TO SUPPRESS OR MANAGE PEST POPULATIONS AT ACCEPTABLE LEVELS.

PEST	AGENT / MECHANISM	SCOPE OF PROGRAM
BULL THISTLE	GALL FLY	WIDELY DISTRIBUTED
ITALIAN THISTLE	SEED HEAD WEEVIL	WIDELY DISTRIBUTED
KLAMATH WEED	KLAMATH WEED BEETLE	WIDELY DISTRIBUTED
YELLOW STAR THISTLE	SEED HEAD WEEVIL	WIDELY DISTRIBUTED
	GALL FLY	WIDELY DISTRIBUTED
	FLOWER WEEVIL	WIDELY DISTRIBUTED
	HAIRY WEEVIL	WIDELY DISTRIBUTED
	PEACOCK FLY	WIDELY DISTRIBUTED
RED GUM LERP PSYLLID	WASP	WIDELY DISTRIBUTED
PUNCTURE VINE	STEM BORING WEEVIL	WIDELY DISTRIBUTED

PEST ERADICATION

THE FOLLOWING PESTS WERE UNDER ACTIVE CONTROL AND ERADICATION DURING THE YEAR: DALMATIAN TOADFLAX, SCOTCH THISTLE, PLUMELESS THISTLE, ARTICHOKE THISTLE, PURPLE STAR THISTLE, OBLONG SPURGE, CANADA THISTLE, HYDRILLA*, SKELETON WEED AND DYERS WOAD * Hydrilla is a CDFA program

EXOTIC INSECT PESTS ¹

URBAN TRAPS	PROGRAM HOURS
291	800

¹ INCLUDES TRAPS FOR MEDITERRANEAN FRUIT FLY, ORIENTAL FRUIT FLY, MELON FLY, GYPSY MOTH, AND JAPANESE BEETLE

GLASSY-WINGED SHARPSHOOTER TRAPPING

URBAN TRAPS	NURSERY TRAPS	PROGRAM HOURS
103	15	398.5

GLASSY-WINGED SHARPSHOOTER NURSERY SHIPMENT INSPECTIONS

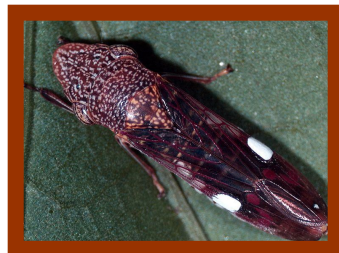
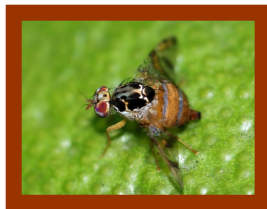
NUMBER OF INSPECTIONS	PROGRAM HOURS
30	61

LIGHT BROWN APPLE MOTH

TRAPS DEPLOYED	NURSERY TRAPS	PROGRAM HOURS
103	13	105

EUROPEAN GRAPEVINE MOTH

TRAPS DEPLOYED	PROGRAM HOURS
37	144.5

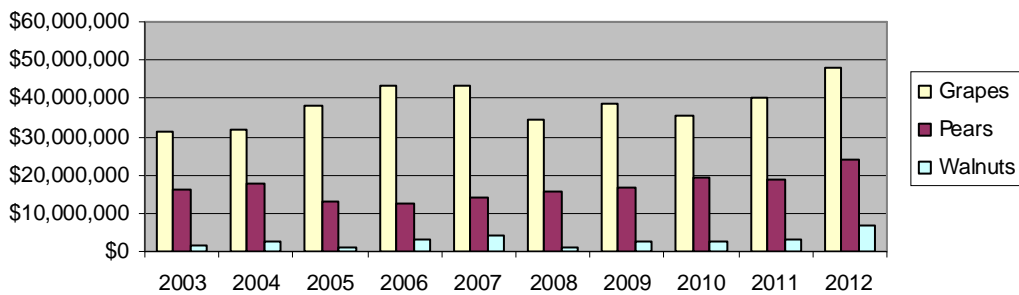


5 Year Value Comparison

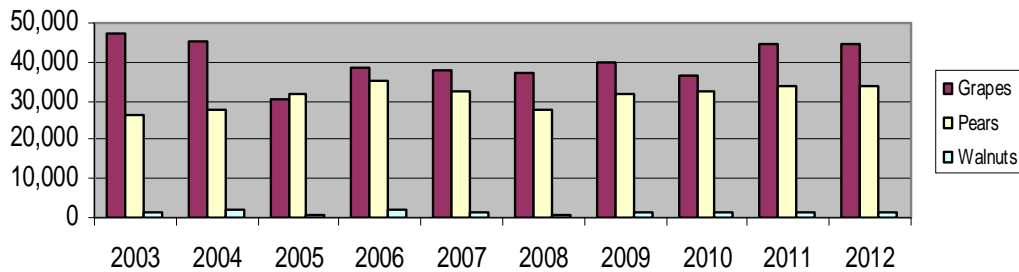
Year	Fruit & Nut	Livestock Production	Livestock & Poultry Products	Nursery Production	Vegetable Production	Field & Seed Crops	Total Value ¹
2012	\$78,634,818	\$2,390,555	\$149,321	\$1,443,295	\$344,182	\$1,872,340	\$84,842,411
2011	\$62,136,847	\$1,959,100	\$113,121	\$793,107	\$295,894	\$148,300	\$66,824,284
2010	\$57,623,258	\$1,745,252	\$181,740	\$2,961,178	\$195,336	\$1,658,000	\$64,272,494
2009	\$57,734,037	\$1,971,212	\$101,715	\$3,533,133	\$193,288	\$1,620,576	\$65,153,961
2008	\$51,062,217	\$1,895,400	\$250,739	\$5,774,193	\$219,767	\$1,984,500	\$61,186,816

¹ Total value includes Forest products when applicable.

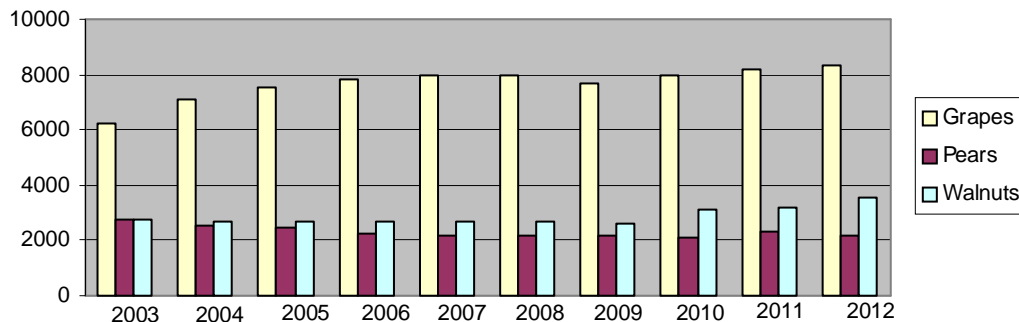
10 Year Value Comparison



10 Year Crop Tonnage Comparison



10 Year Acreage Comparison



Lake County Board of Supervisors

District 1: Jim Comstock

District 2: Jeff Smith

District 3: Denise Rushing

District 4: Anthony Farrington

District 5: Rob Brown



Agricultural Commissioner

Sealer of Weights and Measures

Steven Hajik

Deputy Agricultural Commissioner

Deputy Sealer of Weights and Measures

Kristine Eutenier

Agricultural Biologists

Weights and Measures Inspectors

Drew Tritchler

Katherine Blyleven

Craig Wetherbee

Secretary

Kristi Elsemore

Wildlife Services Staff

Larry Johnson

Matt Campbell

Agricultural Aides

(Insect Trappers)

Lynn Eutenier

Steve Woods

Alice McCombs



Lake County

Department of agriculture



2013

Crop report



COUNTY OF LAKE
Department of Agriculture
Department of Weights & Measures
883 Lakeport Blvd.
Lakeport CA 95453
Phone: (707) 263-0217
FAX: (707) 263-1052

STEVEN HAJIK
Agricultural Commissioner
Sealer of Weights & Measures

June 24, 2014

Karen Ross, Secretary

California Department of Food and Agriculture

And

The Honorable Board of Supervisors of Lake County

It is my pleasure to present the Lake County Agricultural Report for the year 2013 in accordance with sections 2272 and 2279 of the California Agriculture Code. The gross value of Lake County agricultural production for 2013 was \$96,173,111. This is an increase of 13% from 2012. This increase can be attributed to the increasing value of the wine grape industry. **This report represents gross agricultural receipts and does not reflect production costs or net income to the producers.**

The gross value of wine grapes was \$61,340,390, an increase of 28% from 2012. The total tonnage harvested increased by 25% and the total grape acreage was 8,718, an increase of 326 acres. The tons per acre increased by 25%, and the average price per ton increased slightly.

In 2013, the gross value of pears was \$21,788,051, a decrease of 10% from 2012. The total production increased by 3,189 tons, but the price per ton decreased by 8%. The total pear acreage was 2,020, a decrease of 37 acres.

The gross value of walnuts was \$6,327,090, a decrease of 3% from 2012 and production decreased 15%. The price per ton increased 13% and acreage decreased to 3,533 acres.

Increases were noted in livestock production (14%), field crops (18%), miscellaneous fruit (20%), vegetables (19%), and lumber (2,300%). Decreases were noted in nursery production (35%) and livestock and poultry products (9%).

The gross value of pears in this report represents the value of the pears after they are packed and processed. The figures do not indicate the value of the pears at the time of harvest or the gross income of the producers. The gross values of all other commodities in this report represent the value of each commodity at the time of harvest.

I would like to thank our Deputy Agricultural Commissioner, Kris Eutenier, for her efforts in compiling the information, providing the photographs, and working on the layout of the 2013 Crop Report. I wish to express my appreciation to the many individuals and organizations who contributed to making this report possible.

Respectfully submitted,

Steven Hajik

Steve Hajik

Agricultural Commissioner

FRUIT AND NUT CROPS

COMMODITY	MARKET TYPE	YEAR	PRODUCTION (TONS)	YIELD (TONS / ACRE)	RETURNS \$ / Ton ^{1,4}	GROSS VALUE ¹	BEARING ACRES
WINE GRAPES							
WHITES		2013	18,301	6.3	\$1,087	\$19,893,187	2,907
		2012	12,632	4.5	\$1,063	\$13,427,816	2,844
REDS		2013	25,319	4.7	\$1,637	\$41,447,203	5,346
		2012	22,184	4.2	\$1,553	\$34,451,752	5,312
TOTAL ALL WINE GRAPES		2013	43,620	5.3	\$1,407	\$61,340,390	8,253
		2012	34,816	4.3	\$1,375	\$47,879,568	8,156
PEARS							
BARTLETT ² INCLUDING RED	FRESH	2013	19,517		\$801	\$15,633,117	
		2012	21,527		\$869	\$18,704,533	
	CANNERY	2013	11,614		\$294	\$3,409,565	
		2012	11,184		\$326	\$3,651,321	
	BY- PRODUCTS & Juice	2013	6,509		\$268	\$1,744,442	
		2012	2,890		\$170	\$491,701	
TOTAL BARTLETT		2013	37,640	19.0	\$553	\$20,787,124	1,983
		2012	35,601	17.6	\$642	\$22,847,555	2,020
All Other ² (INCLUDES; ASIAN, BOSCH, COMICE, SECK- EL)	FRESH	2013	1,108		\$887	\$983,320	
		2012	1,030		\$1,231	\$1,268,185	
	BY-PRODUCTS	2013	328		\$54	\$17,607	
		2012	256		\$48	\$12,260	
TOTAL OTHER		2013	1,436	13.0	\$697	\$1,000,927	110
		2012	1,286	11.7	\$996	\$1,280,445	110
TOTAL ALL PEARS		2013	39,076	18.7	\$558	\$21,788,051	2,093
		2012	36,887	17.3	\$654	\$24,128,000	2,130
WALNUTS							
TOTAL ALL WALNUTS		2013	1,743	0.52	\$3,630	\$6,327,090	3,300
		2012	2,042	0.62	\$3,200	\$6,534,400	3,291
MISCELLANEOUS FRUITS & NUTS							
Olives		2013	50	1	\$550	\$27,500	50
		2012	42	1	\$425	\$26,850	39
MISCELLANEOUS ³		2013				\$84,379	25
		2012				\$66,000	16
TOTAL MISCELLANEOUS		2013				\$111,879	75
		2012				\$92,850	55
TOTAL ALL FRUIT AND NUTS		2013				\$89,567,410	13,721
		2012				78,634,818	13,632

¹ THIS IS GROSS VALUE AND DOES NOT REPRESENT NET RETURN TO THE PRODUCER.

² THIS IS THE FOB PRICE WHICH INCLUDES PROCESSING AND PACKING COSTS.

³ INCLUDES APPLES, PEACHES, STRAWBERRIES, MELONS

⁴ Numbers are weighted averages

FRUIT AND NUT ACREAGE

CROP		Bearing Acres	Non-Bearing Acres	Total
PEARS	Bartlett	1,983	12	1,995
	All Other Pears	110	0	110
	Total	2,093	12	2,105
WINE GRAPES	Whites	2,907	83	2,990
	Reds	5,346	382	5,728
	Total	8,253	465	8,718
WALNUTS		3,300	233	3,533
OLIVES		50	20	70
MISCELLANEOUS ¹		25	0	25
TOTAL		13,721	730	14,451

¹Includes Apples, Peaches, Strawberries, Melons, Etc.

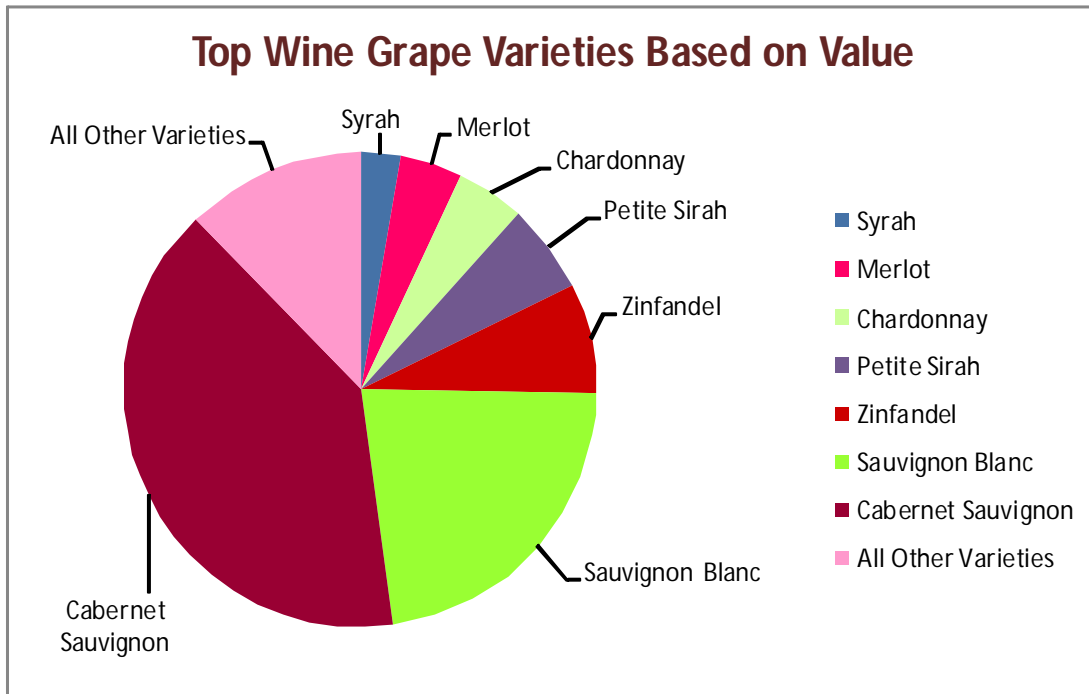


NURSERY PRODUCTION

YEAR	GREENHOUSE SQ. FEET	FIELD ACRES	VALUE
2013	17,650	38	\$940,458
2012	18,300	38	\$1,443,295

TOP WINE GRAPE VARIETIES

VARIETY	TONS	RETURNS / TONS	TOTAL RETURNS
Syrah	1,186	\$1,403	\$1,664,991
Merlot	2,083	\$1,260	\$2,625,521
Chardonnay	2,337	\$1,195	\$2,793,876
Petite Syrah	2,345	\$1,606	\$3,767,091
Zinfandel	3,040	\$1,487	\$4,521,236
Sauvignon Blanc	13,065	\$1,057	\$13,819,746
Cabernet Sauvignon	14,120	\$1,725	\$24,359,164
All Other Varieties	5,444	varies	\$7,788,765



ALL OTHER WINE GRAPE VARIETIES

Cabernet Franc	Albarino	Mataro	Roussanne
Carignane	Gewurztraminer	Petit Verdot	Sauvignon Musque
Charbono	Grenache Blanc	Pinot Noir	Semillon
Malbec	Pinot Gris	Primitivo	Vermentino
Counoise	Muscat Blanc	Sangiovese	Viognier
Gamay	Muscat Orange	Souzao	White Riesling
Grenache	Pinot Blanc	Tempranillo	Tinta Cao
Marsanne	Trousseau	Tinta Madeira	Touriga Nacional

LIVESTOCK PRODUCTION

COMMODITY	YEAR	NO. OF HEAD	TOTAL CWT ¹ (LIVE WT)	VALUE PER CWT	VALUE
CATTLE AND CALVES	2013	3,240	15,876	\$160	\$2,540,160
	2012	3,220	17,388	\$125	\$2,173,500
MISCELLANEOUS ²	2013				\$178,823
	2012				\$217,055
TOTALS	2013				\$2,718,983
	2012				\$2,390,555

¹ CWT = 100 POUNDS

² INCLUDES GOATS, SHEEP, HOGS, RABBITS, MEAT CHICKENS, AND OTHER MEAT BIRDS



LIVESTOCK AND POULTRY PRODUCTS

COMMODITY	YEAR	NO. OF HEAD	TOTAL CWT ¹ (LIVE WT)	VALUE PER CWT	VALUE
MISCELLANEOUS ¹	2013				\$135,685
	2012				\$149,321

¹ INCLUDES EGGS, CHEESE, WOOL, HONEY AND MANURE

ORGANIC ¹ FARMING STATISTICS

CROPS 2013	NUMBER OF FARMS	ACRES	VALUE
WALNUTS	66	1,788	
WINE GRAPES	22	719	
MISCELLANEOUS VEGETABLES	16	22	
PEARS	7	190	
MISCELLANEOUS FRUIT	7	4	
OLIVES	3	8	
POULTRY and EGGS	5	5	
TOTAL	126	2,736	\$6,144,726

¹ REGISTERED ORGANIC WITH THE LAKE COUNTY AGRICULTURAL COMMISSIONER

ORGANIC WALNUTS	ACRES	VALUE
	1,788	\$1,854,743



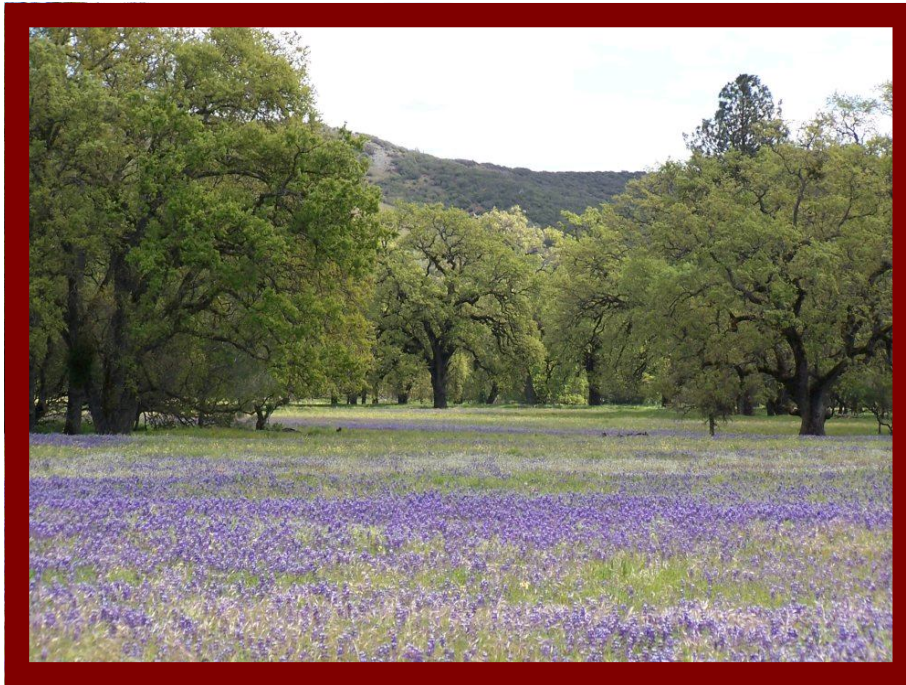
VEGETABLE CROPS

COMMODITY	YEAR	ACRES	VALUE
MISCELLANEOUS VEGETABLES ¹	2013	32	\$411,255
	2012	30	\$344,182

¹ INCLUDES PUMPKINS, BEANS, SWEET CORN, GARLIC, HERBS, PEAS, POTATOES, SQUASH, TOMATOES, ETC.

FIELD AND SEED CROPS

COMMODITY	YEAR	ACREAGE	RETURNS (\$ ACRE)	VALUE
IRRIGATED PASTURE	2013	700	\$100	\$70,000
	2012	700	\$100	\$70,000
RANGE	2013	90,000	\$6.00	\$540,000
	2012	90,000	\$4.50	\$405,000
MISCELLANEOUS ¹	2013	2,089	VARIES	\$1,607,400
	2012	1,939	VARIES	\$1,397,340
TOTAL				
	2013	92,789		\$2,217,400
	2012	92,639		\$1,872,340
¹ INCLUDES WILD RICE, OAT HAY, ALFALFA, GRASS HAY, HOPS, AND GRAINS				



TIMBER HARVEST ¹

ITEM	YEAR	MBF ¹	VALUE ²
TIMBER YIELD	2013	966	\$181,920
	2012	56	\$7,900
¹ Values furnished by the California State Board of Equaliza on			
² Quani ty of mber cut and scaled (Thousand Board Feet)			

SUSTAINABLE AGRICULTURE REPORT

BIOLOGICAL CONTROL

BIOLOGICAL CONTROL IS THE DELIBERATE USE OF NATURAL ENEMIES TO SUPPRESS OR MANAGE PEST POPULATIONS AT ACCEPTABLE LEVELS.

PEST	AGENT / MECHANISM	SCOPE OF PROGRAM
BULL THISTLE	GALL FLY	Established
ITALIAN THISTLE	SEED HEAD WEEVIL	Established
KLAMATH WEED	KLAMATH WEED BEETLE	Established
YELLOW STARTHISTLE	SEED HEAD WEEVIL	Established
	GALL FLY	
	FLOWER WEEVIL	
	HAIRY WEEVIL	
RED GUM LERP PSYLLID	WASP	Established
PUNCTURE VINE	STEM BORING WEEVIL	Established

PEST ERADICATION

THE FOLLOWING PESTS WERE UNDER ACTIVE CONTROL AND ERADICATION DURING THE YEAR: DALMATIAN TOADFLAX, SCOTCH THISTLE, PLUMELESS THISTLE, ARTICHOKE THISTLE, PURPLE STAR THISTLE, OBLONG SPURGE, CANADA THISTLE, SKELETON WEED, DYERS WOAD, STINKWORT, GOATS RUE AND HYDRILLA*.

* HYDRILLA IS A CDFA PROGRAM.

EXOTIC INSECT PESTS ¹

URBAN TRAPS		PROGRAM HOURS
291		703

¹ INCLUDES TRAPS FOR MEDITERRANEAN FRUIT FLY, ORIENTAL FRUIT FLY, MELON FLY, GYPSY MOTH AND JAPANESE BEETLE

GLASSY-WINGED SHARPSHOOTER TRAPPING

URBAN TRAPS	NURSERY TRAPS	PROGRAM HOURS
103	15	333

GLASSY-WINGED SHARPSHOOTER NURSERY SHIPMENT INSPECTIONS

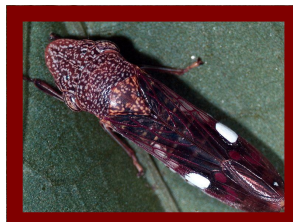
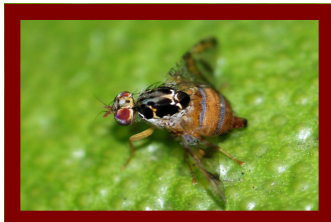
NUMBER OF INSPECTIONS		PROGRAM HOURS
17		31

LIGHT BROWN APPLE MOTH

TRAPS DEPLOYED	NURSERY TRAPS	PROGRAM HOURS
103	13	59.5

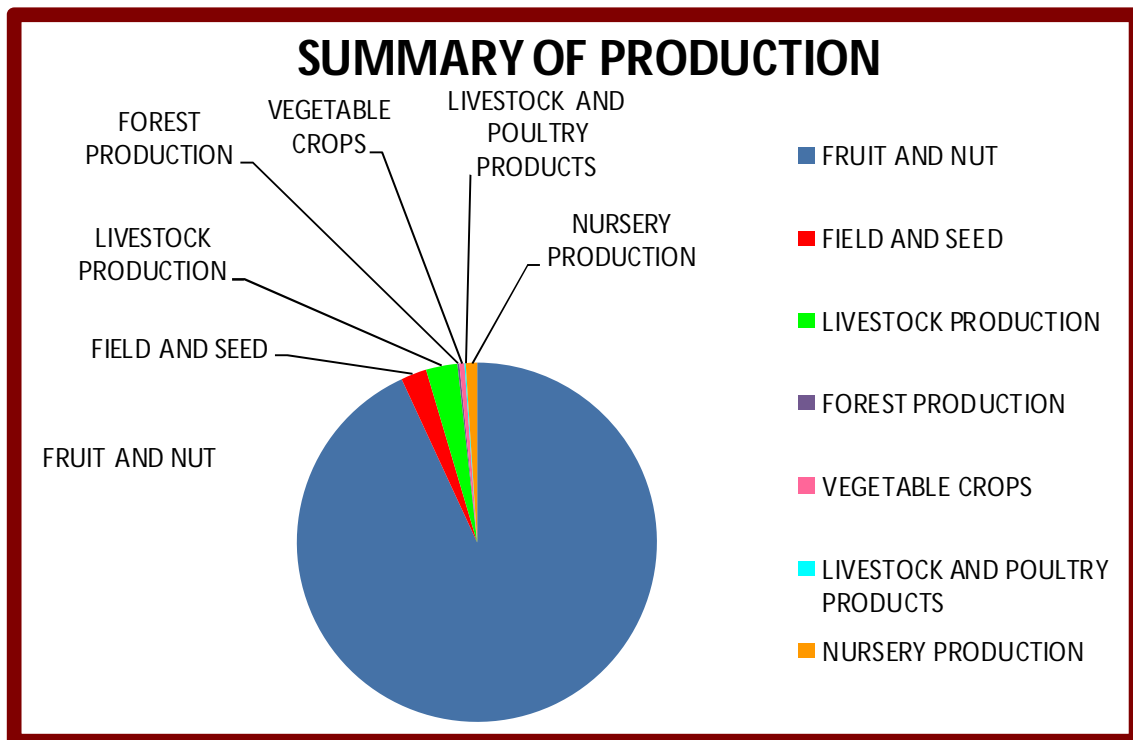
EUROPEAN GRAPEVINE MOTH

TRAPS DEPLOYED		PROGRAM HOURS
37		115



SUMMARY OF PRODUCTION

FRUIT AND NUT	2013	\$89,567,410
	2012	\$78,634,818
FIELD AND SEED	2013	\$2,217,400
	2012	\$1,872,340
LIVESTOCK PRODUCTION	2013	\$2,718,983
	2012	\$2,390,555
FOREST PRODUCTION	2013	\$181,920
	2012	\$7,900
VEGETABLE CROPS	2013	\$411,255
	2012	\$344,182
LIVESTOCK AND POULTRY PRODUCTS	2013	\$135,685
	2012	\$149,321
NURSERY PRODUCTION	2013	\$940,458
	2012	\$1,443,295
TOTAL	2013	\$96,173,111
	2012	\$84,842,411

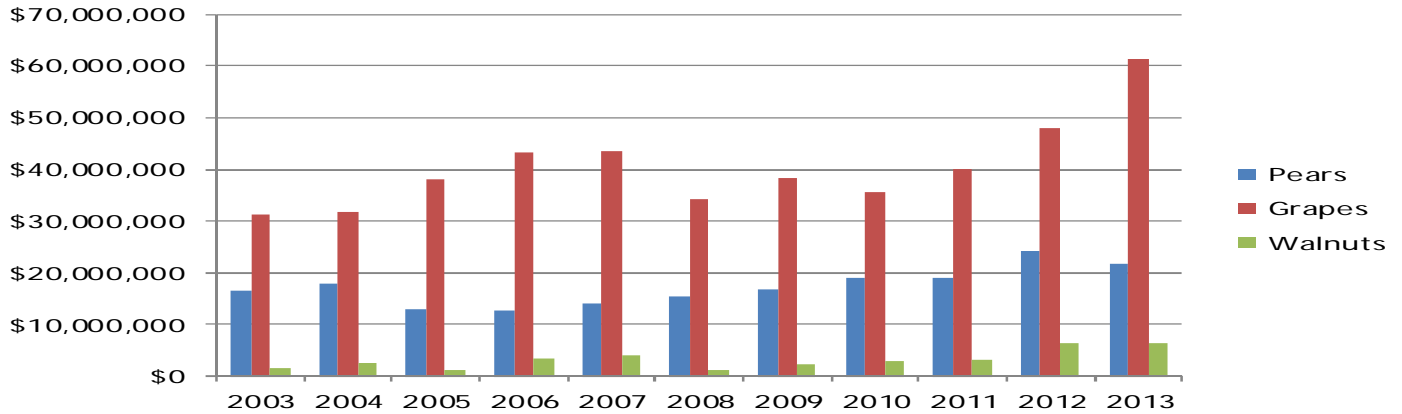


5 Year Value Comparison

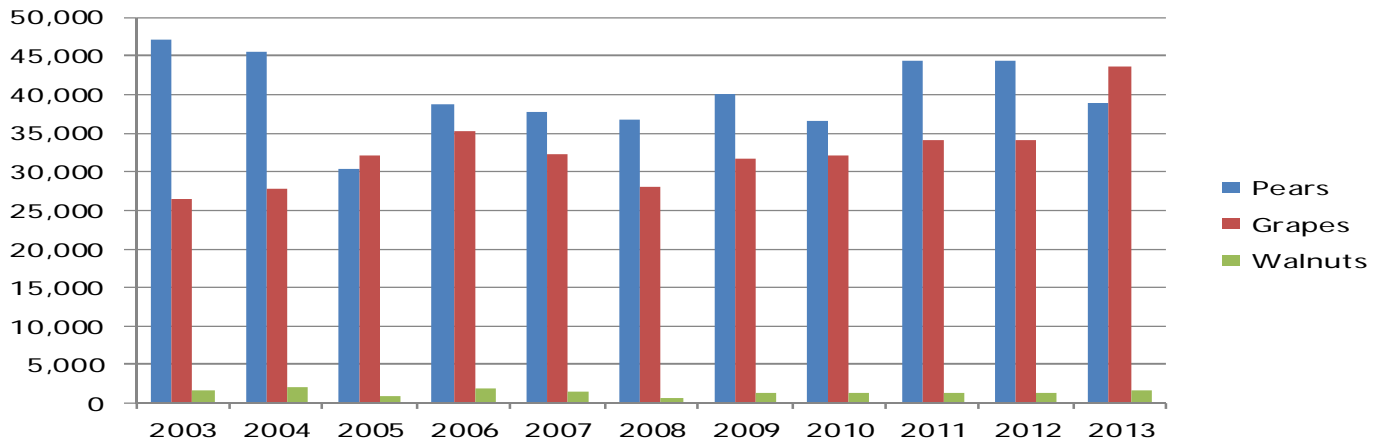
Year	Fruit & Nut	Livestock Production	Livestock & Poultry Products	Nursery Production	Vegetable Production	Field & Seed Crops	Total Value ¹
2013	\$89,567,410	\$2,718,983	\$135,685	\$940,458	\$411,255	\$2,217,400	\$96,173,111
2012	\$78,634,818	\$2,390,555	\$149,321	\$1,443,295	\$344,182	\$1,872,340	\$84,842,411
2011	\$62,136,847	\$1,959,100	\$113,121	\$793,107	\$295,894	\$1,480,300	\$66,824,284
2010	\$57,623,258	\$1,745,252	\$181,740	\$2,961,178	\$195,336	\$1,358,000	\$64,272,494
2009	\$57,734,037	\$1,971,212	\$101,715	\$3,533,133	\$193,288	\$1,620,576	\$65,153,961

¹ Total value includes Forest products when applicable.

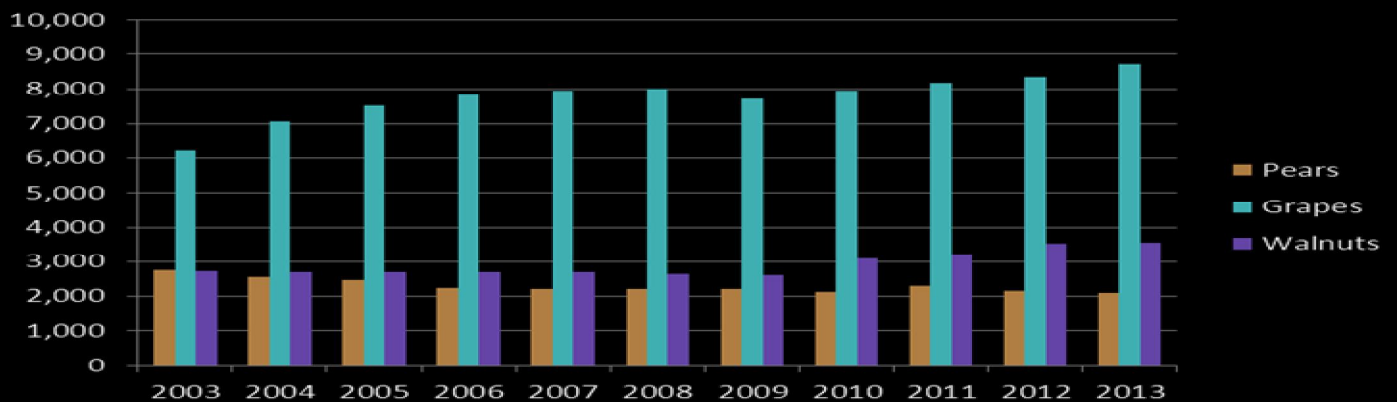
10 Year Value Comparison



10 Year Crop Tonnage Comparison



10 Year Acreage Comparison



Lake County Board of Supervisors

District 1: Jim Comstock

District 2: Jeff Smith

District 3: Denise Rushing

District 4: Anthony Farrington

District 5: Rob Brown



Agricultural Commissioner

Sealer of Weights and Measures

Steven Hajik

Deputy Agricultural Commissioner

Deputy Sealer of Weights and Measures

Kris ne Eutenier

Secretary

Kris Elsemore

Agricultural Biologists

Weights and Measures Inspectors

Drew Tritchler

Katherine Blyleven

Sam Upton

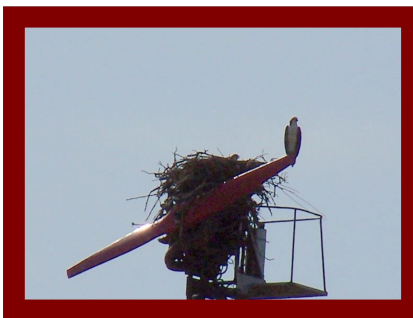
Agricultural Aides

(Insect Trappers)

Alice McCombs

Wayne Shaffer

Steve Woods



Wildlife Services Staff

Larry Johnson

Tony Lombardi



Lake County
Department of Agriculture



2014

Crop Report



COUNTY OF LAKE
Department of Agriculture
Department of Weights & Measures
883 Lakeport Blvd.
Lakeport CA 95453
Phone: (707) 263-0217
FAX: (707) 263-1052

STEVEN HAJIK
Agricultural Commissioner
Sealer of Weights & Measures

October 20, 2015

Karen Ross, Secretary

California Department of Food and Agriculture

And

The Honorable Board of Supervisors of Lake County

It is my pleasure to present the Lake County Agricultural Report for the year 2014 in accordance with sections 2272 and 2279 of the California Agriculture Code. The gross value of Lake County agricultural production for 2014 was \$93,096,266. This is a decrease of 3% from 2013. This decrease can be attributed to a decline in the value of the wine grape and pear industries. **This report represents gross agricultural receipts and does not reflect production costs or net income to the producers.**

The gross value of wine grapes was \$58,866,795, a decrease of 4% from 2013. The total tonnage decreased by 11% and the total grape acreage was 8,782, an increase of 64 acres. The tons per acre decreased by 9% and the average price per ton increased by 8%.

In 2014, the gross value of pears was \$20,736,719, a decrease of 5% from 2013. The total production decreased by 7,130 tons, but the price per ton increased by 14%. The total pear acreage was 2,073.

The gross value of walnuts was \$6,732,000, an increase of 7% from 2013 and production decreased by 14%. The price per ton increased by 22% and acreage increased to 3,932.

Increases were noted in nursery production (1%), field crops (18%), livestock and poultry products (1%), and timber (210%). Decreases were noted in miscellaneous fruit (19%), vegetables (30%) and livestock production (15%).

The gross value of pears in this report represents the value of the pears after they are packed and processed. The figures do not indicate the value of the pears at the time of harvest or the gross income of the producers. The gross values of all other commodities in this report represent the value of each commodity at the time of harvest.

I would like to thank our Deputy Agricultural Commissioner, Kris Eutenier, for her efforts in compiling the information, providing the photographs, and working on the layout of the 2014 Crop Report. I wish to express my appreciation to the many individuals and organizations who contributed to making this report possible.

Respectfully submitted,

Steven Hajik

Steven Hajik

Agricultural Commissioner

2014 FRUIT AND NUT CROPS

COMMODITY	MARKET TYPE	YEAR	PRODUCTION (TONS)	YIELD (TONS / ACRE)	RETURNS \$ / Ton ^{1,4}	GROSS VALUE ¹	BEARING ACRES
WINE GRAPES							
WHITES		2014	16,467	5.7	\$1,108	\$18,252,244	2,914
		2013	18,301	6.3	\$1,087	\$19,893,187	2,907
REDS		2014	22,206	4.3	\$1,829	\$40,614,551	5,156
		2013	25,319	4.7	\$1,637	\$41,447,203	5,346
TOTAL ALL WINE GRAPES		2014	38,673	4.8	\$1,522	\$58,866,795	8,070
		2013	43,620	5.3	\$1,407	\$61,340,390	8,253
PEARS							
BARTLETT ² INCLUDING RED	FRESH	2014	16,224		\$929	15,069,083	
		2013	19,517		\$801	\$15,633,117	
	CANNERY	2014	8,147		\$342	\$2,786,713	
		2013	11,614		\$294	\$3,409,565	
	BY- PRODUCTS & Juice	2014	6,294		\$273	\$1,719,472	
		2013	6,509		\$268	\$1,744,442	
TOTAL BARTLETT		2014	30,665	15.6	\$638	\$19,575,268	1,963
		2013	37,640	19.0	\$553	\$20,787,124	1,983
All Other ² (INCLUDES; ASIAN, BOSC, COMICE, SECK- EL)	FRESH	2014	1,026		\$1,114	\$1,142,840	
		2013	1,108		\$887	\$983,320	
	BY-PRODUCTS	2014	256		\$73	\$18,611	
		2013	328		\$54	\$17,607	
TOTAL OTHER		2014	1,282	11.6	\$906	\$1,161,451	110
		2013	1,436	13.0	\$697	\$1,000,927	110
TOTAL ALL PEARS		2014	31,946	15.4	\$649	\$20,736,719	2,073
		2013	39,076	18.7	\$558	\$21,788,051	2,093
WALNUTS							
TOTAL ALL WALNUTS		2014	1,496	.40	\$4,500	\$6,732,000	3,700
		2013	1,743	0.52	\$3,630	\$6,327,090	3,300
MISCELLANEOUS FRUITS & NUTS							
Olives		2014	65	1	\$550	\$35,750	65
		2013	50	1	\$550	\$27,500	50
MISCELLANEOUS ³		2014				\$55,122	19
		2013				\$84,379	25
TOTAL MISCELLANEOUS		2014				\$90,872	84
		2013				\$111,879	75
TOTAL ALL FRUIT AND NUTS		2014				\$86,426,386	13,927
		2013				\$89,567,410	13,721

¹ THIS IS GROSS VALUE AND DOES NOT REPRESENT NET RETURN TO THE PRODUCER.

² THIS IS THE FOB PRICE WHICH INCLUDES PROCESSING AND PACKING COSTS.

³ INCLUDES APPLES, PEACHES, STRAWBERRIES, MELONS

⁴ Numbers are weighted averages

FRUIT AND NUT ACREAGE

CROP		Bearing Acres	Non-Bearing Acres	Total
PEARS	Bartlett	1,963	7	1,970
	All Other Pears	110	0	110
	Total	2,073	7	2,080
WINE GRAPES	Whites	2,914	87	3,001
	Reds	5,156	625	5,781
	Total	8,070	712	8,782
WALNUTS		3,700	232	3,932
OLIVES		65	10	75
MISCELLANEOUS ¹		19	0	19
TOTAL		13,927	961	14,888

¹Includes Apples, Peaches, Strawberries, Melons, Etc.



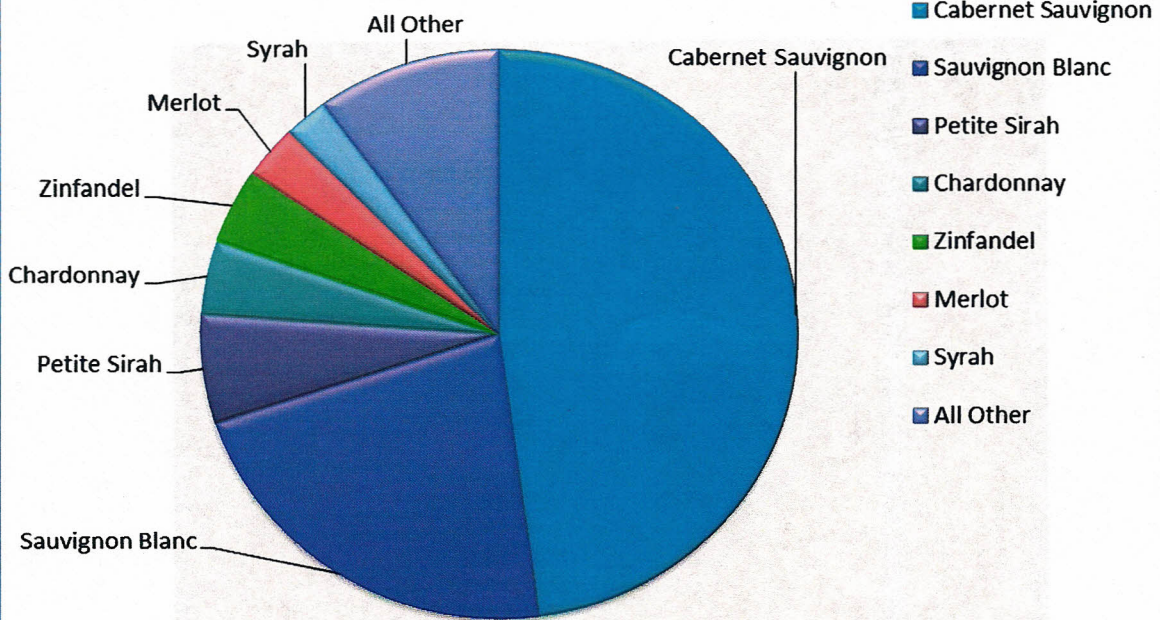
NURSERY PRODUCTION

YEAR	GREENHOUSE SQ. FEET	FIELD ACRES	VALUE
2014	17,050	37.2	\$941,566
2013	17,650	38	\$940,458

Top Wine Grape Varieties

Variety	Tons Crushed	Weighted Average Returns	Total
Cabernet Sauvignon	14,025	\$2,010	\$28,189,511
Sauvignon Blanc	11,966	\$1,085	\$12,983,522
Petite Sirah	2,138	\$1,704	\$3,643,597
Chardonnay	2,134	\$1,175	\$2,507,514
Zinfandel	1,656	\$1,489	\$2,465,569
Merlot	1,386	\$1,300	\$1,802,039
Syrah	988	\$1,392	\$1,375,734
All Other	4,380	VARIES	\$5,899,309

Top Wine Varieties Based On Value



Aglianico	Vementino	Marsanne	Primitivo
Carmenere	Albarino	Counoise	Roussane
Nebbiolo	Carignane	Muscat Orange	Barbera
Tinta Cao	Souzao	Touriga Nacional	Mataro
Tinta Madeira	Grenache Blanc	Pinot Blanc	Grenache
Trousseau	Petit Verdot	Sangiovese	Tempranillo
White Riesling	Gewurztraminer	Sauvignon Musque	Muscat Blanc
Pinot Noir	Viognier	Semillon	Malbec
Cabernet Franc			

LIVESTOCK PRODUCTION

COMMODITY	YEAR	NO. OF HEAD	TOTAL CWT ¹ (LIVE WT)	VALUE PER CWT	VALUE
CATTLE AND CALVES	2014	2,400	11,760	\$185	\$2,175,600
	2013	3,240	15,876	\$160	\$2,540,160
MISCELLANEOUS ²	2014				\$130,955
	2013				\$178,823
TOTALS	2014				\$2,306,555
	2013				\$2,718,983

¹ CWT = 100 POUNDS

² INCLUDES GOATS, SHEEP, HOGS, RABBITS, MEAT CHICKENS, AND OTHER MEAT BIRDS



LIVESTOCK AND POULTRY PRODUCTS

	YEAR			VALUE
MISCELLANEOUS ¹	2014			\$137,760
	2013			\$135,685

¹ INCLUDES EGGS, CHEESE, WOOL, HONEY AND MANURE

ORGANIC ¹ FARMING STATISTICS

CROPS 2014	NUMBER OF FARMS	ACRES	VALUE
WALNUTS	42	1,598	
WINE GRAPES	16	465	
MISCELLANEOUS VEGETABLES	9	7	
PEARS	3	159	
MISCELLANEOUS FRUIT	2	1	
OLIVES	3	15	
POULTRY AND EGGS	2		
GRAINS ²	2	16	
TOTAL	79	2,214	\$ 4,954,873

¹ REGISTERED ORGANIC WITH THE LAKE COUNTY AGRICULTURAL COMMISSIONER

² ORGANIC GRAINS, INCLUDING HOPS

ORGANIC WALNUTS	ACRES	VALUE
	1,598.00	\$1,460,098



VEGETABLE CROPS

COMMODITY	YEAR	ACRES	VALUE
MISCELLANEOUS VEGETABLES ¹	2014	24	\$286,309
	2013	32	\$411,255

¹ INCLUDES PUMPKINS, BEANS, SWEET CORN, GARLIC, HERBS, PEAS, POTATOES, SQUASH, TOMATOES, ETC.

FIELD AND SEED CROPS

COMMODITY	YEAR	ACREAGE	RETURNS	VALUE
			(\$ ACRE)	
IRRIGATED PASTURE	2014	700	\$100	\$70,000
	2013	700	\$100	\$70,000
RANGE	2014	90,000	\$8.00	\$720,000
	2013	90,000	\$6.00	\$540,000
MISCELLANEOUS ¹	2014	2,500	VARIES	\$1,810,000
	2013	2,089	VARIES	\$1,607,400
TOTAL	2014	93,200		\$2,600,000
	2013	92,789		\$2,217,400

¹ INCLUDES WILD RICE, OAT HAY, ALFALFA, GRASS HAY, HOPS, AND GRAINS



TIMBER HARVEST ¹

ITEM	YEAR	MBF ¹	VALUE ²
TIMBER YIELD	2014	1721	\$397,690
	2013	966	\$181,920

¹ Values furnished by the California State Board of Equalization

² Quantity of timber cut and scaled (Thousand Board Feet)

SUSTAINABLE AGRICULTURE REPORT

BIOLOGICAL CONTROL

BIOLOGICAL CONTROL IS THE DELIBERATE USE OF NATURAL ENEMIES TO SUPPRESS OR MANAGE PEST POPULATIONS AT ACCEPTABLE LEVELS.

PEST	AGENT / MECHANISM	SCOPE OF PROGRAM
BULL THISTLE	GALL FLY	Established
ITALIAN THISTLE	SEED HEAD WEEVIL	Established
KLAMATH WEED	KLAMATH WEED BEETLE	Established
YELLOW STAR THISTLE	SEED HEAD WEEVIL	Established
	GALL FLY	
	FLOWER WEEVIL	
	HAIRY WEEVIL	
RED GUM LERP PSYLLID	WASP	Established
PUNCTURE VINE	STEM BORING WEEVIL	Established

PEST ERADICATION

THE FOLLOWING PESTS WERE UNDER ACTIVE CONTROL AND ERADICATION DURING THE YEAR: DALMATIAN TOADFLAX, SCOTCH THISTLE, PLUMELESS THISTLE, ARTICHOKE THISTLE, PURPLE STAR THISTLE, OBLONG SPURGE, CANADA THISTLE, SKELETON WEED, DYERS WOAD, STINKWORT, GOATS RUE AND HYDRILLA*.

* HYDRILLA IS A CDFA PROGRAM.

EXOTIC INSECT PESTS ¹

URBAN TRAPS	PROGRAM HOURS
291	530

¹ INCLUDES TRAPS FOR MEDITERRANEAN FRUIT FLY, ORIENTAL FRUIT FLY, MELON FLY, GYPSY MOTH AND JAPANESE BEETLE

GLASSY-WINGED SHARPSHOOTER TRAPPING

URBAN TRAPS	NURSERY TRAPS	PROGRAM HOURS
103	15	411

GLASSY-WINGED SHARPSHOOTER NURSERY SHIPMENT INSPECTIONS

NUMBER OF INSPECTIONS	PROGRAM HOURS
6	14.5

LIGHT BROWN APPLE MOTH

TRAPS DEPLOYED	NURSERY TRAPS	PROGRAM HOURS
103	13	31.5

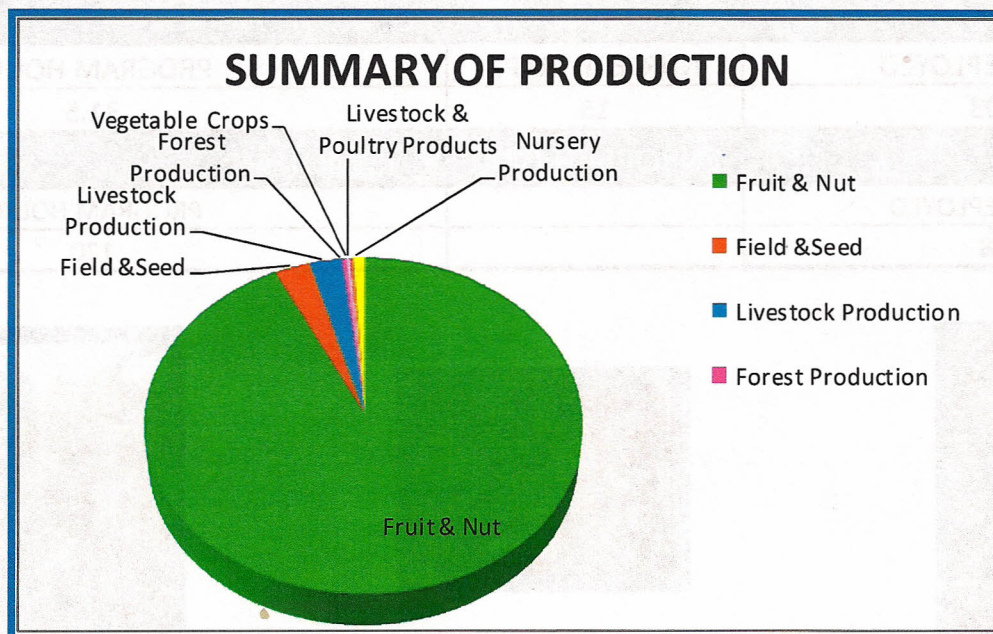
EUROPEAN GRAPEVINE MOTH

TRAPS DEPLOYED	PROGRAM HOURS
38	120



SUMMARY OF PRODUCTION

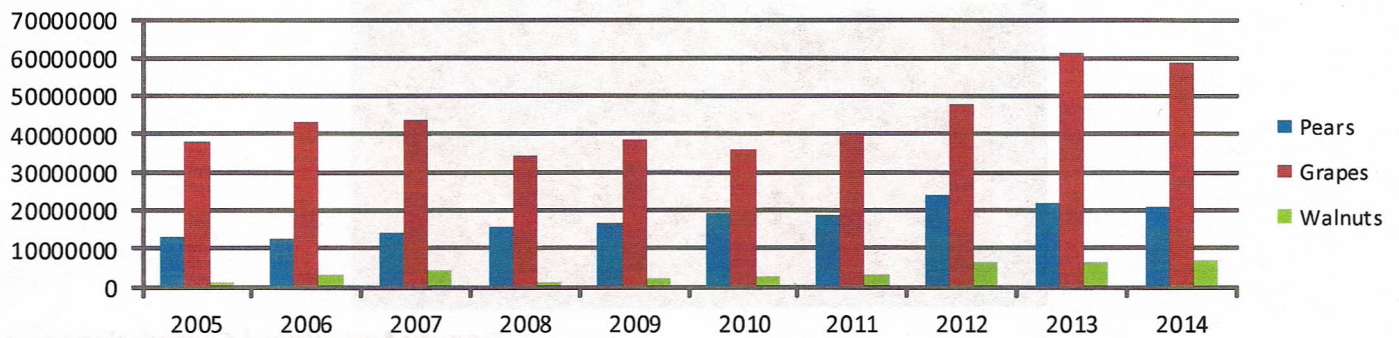
FRUIT AND NUT	2014	\$86,426,386
	2013	\$89,567,410
FIELD AND SEED	2014	\$2,600,000
	2013	\$2,217,400
LIVESTOCK PRODUCTION	2014	\$2,306,555
	2013	\$2,718,983
FOREST PRODUCTION	2014	\$397,690
	2013	\$181,920
VEGETABLE CROPS	2014	\$286,309
	2013	\$411,255
LIVESTOCK AND POULTRY PRODUCTS	2014	\$137,760
	2013	\$135,685
NURSERY PRODUCTION	2014	\$941,566
	2013	\$940,458
TOTAL	2014	\$93,096,266
	2013	\$96,173,111



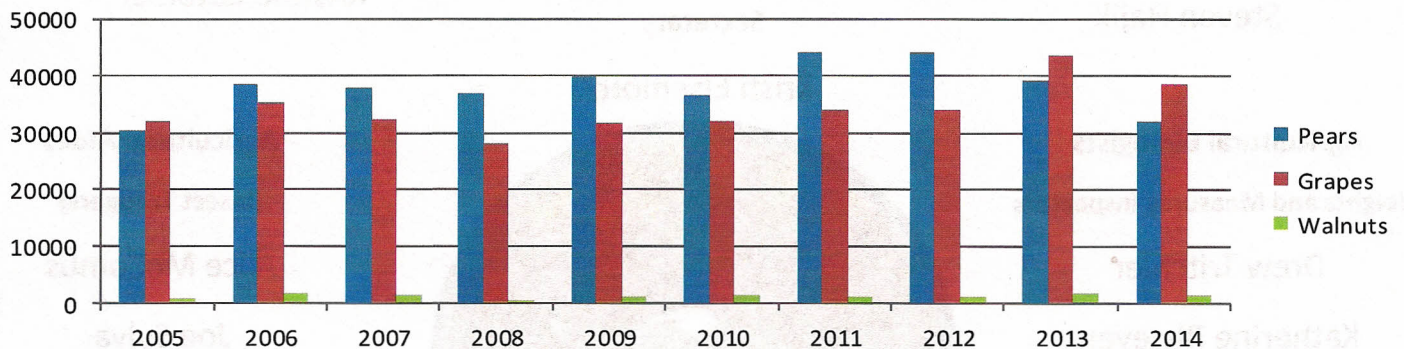
5 Year Value Comparison

Year	Fruit & Nut	Livestock Production	Livestock & Poultry Products	Nursery Production	Vegetable Production	Field & Seed Crops	Timber	Total Value ¹
2014	\$86,426,386	\$2,306,555	\$137,760	\$941,566	\$286,309	\$2,600,000	\$397,690	\$93,096,266
2013	\$89,567,410	\$2,718,983	\$135,685	\$940,458	\$411,255	\$2,217,400	\$181,920	\$96,173,111
2012	\$78,634,818	\$2,390,555	\$149,321	\$1,443,295	\$344,182	\$1,872,340	\$7,900	\$84,842,411
2011	\$62,136,847	\$1,959,100	\$113,121	\$793,107	\$295,894	\$148,300	\$45,915	\$66,824,284
2010	\$57,623,258	\$1,745,252	\$181,740	\$2,961,178	\$195,336	\$1,658,000	\$207,730	\$64,272,494

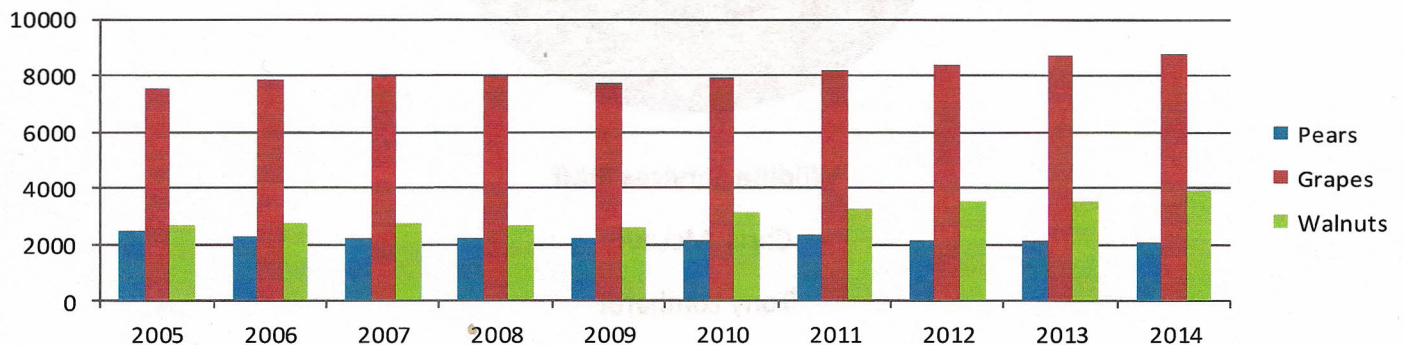
10 YEAR VALUE COMPARISON



10 YEAR CROP TONNAGE COMPARISON



10 YEAR ACREAGE COMPARISON



2014 Lake County Board of Supervisors

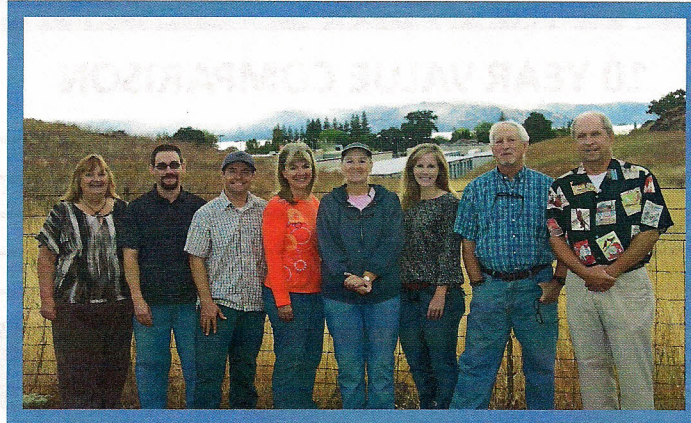
District 1: Jim Comstock

District 2: Jeff Smith

District 3: Denise Rushing

District 4: Anthony Farrington

District 5: Rob Brown



Agricultural Commissioner

Sealer of Weights and Measures

Steven Hajik

Deputy Agricultural Commissioner

Deputy Sealer of Weights and Measures

Kristine Eutenier

Secretary

Kristi Elsemore

Agricultural Biologists

Weights and Measures Inspectors

Drew Tritchler

Katherine Blyleven

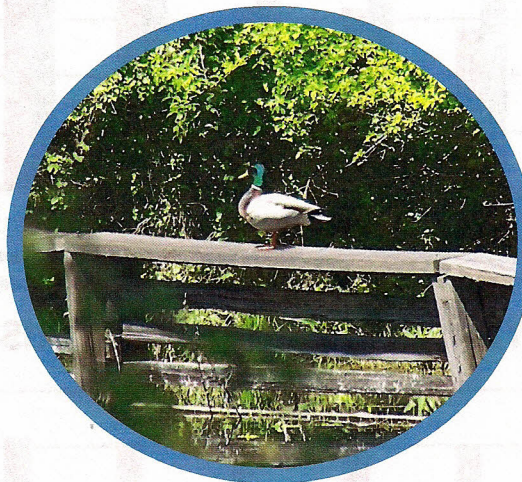
Sam Upton

Agricultural Aides

(Insect Trappers)

Alice McCombs

Joe Sylva



Wildlife Services Staff

Chris McLaury

Tony Lombardi