



AgEcon SEARCH
RESEARCH IN AGRICULTURAL & APPLIED ECONOMICS

The World's Largest Open Access Agricultural & Applied Economics Digital Library

This document is discoverable and free to researchers across the globe due to the work of AgEcon Search.

Help ensure our sustainability.

Give to AgEcon Search

AgEcon Search

<http://ageconsearch.umn.edu>

aesearch@umn.edu

*Papers downloaded from **AgEcon Search** may be used for non-commercial purposes and personal study only. No other use, including posting to another Internet site, is permitted without permission from the copyright owner (not AgEcon Search), or as allowed under the provisions of Fair Use, U.S. Copyright Act, Title 17 U.S.C.*

California Department of Food and Agriculture

Agricultural Commissioners' Crop Reports

Lake County

2005-2009



**LAKE COUNTY
2005
CROP REPORT**



A.G Kawamura, Secretary
California Department of Food and Agriculture
And
The Honorable Board of Supervisors of Lake County

August 29, 2006

Gentlemen:

It is my pleasure to present the Lake County Agricultural Report for the year 2005 in accordance with Sections 2272 and 2279 of the California Agriculture Code. The gross value of Lake County agricultural production for 2005 was \$61,542,811; this is almost unchanged from 2004. The increase in the value of wine grapes countered decreases in all other agricultural categories except livestock and poultry products. **This report represents gross agricultural receipts and does not reflect production costs or net income to the producers.**

The gross value of wine grapes increased 17% in 2005. The total tonnage harvested increased by 13% and the grape acreage increased 3%. In addition, the tons per acre and the price per ton also increased .

In 2005, the gross value of pears decreased 28%. The total production decreased 38% and total pear acreage was reduced by 75 acres. Overall, prices per ton were up 15% from the previous year.

The gross value of walnuts decreased 44% from 2004. Total production decreased by 60%, the price per ton increased 29%, and the acreage remained virtually unchanged. Decreases in pear and walnut production in 2005 were due to inclement weather during critical times in the growing season.

There were decreases in the following agricultural categories:

Forest products (52%), nursery products (12%) livestock production (8%) vegetable production (4%) and field crops (2%) . Livestock and poultry products increased 4% in value. The decline in field crops was due to excessive rainfall in the spring.

The gross value of pears in this report represents the value of the pears after they are packed and processed. The figures do not indicate the value of the pears at the time of harvest or the gross income of the producers. The gross values of all other commodities in this report represent the value of each commodity at the time of harvest.

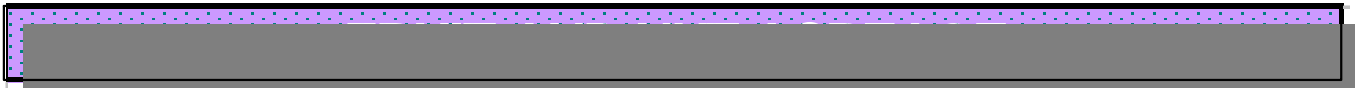
I would like to thank our staff Biologists Kris Eutenier and Dana Thibeau for their efforts in compiling the information, providing the photographs, and working on the layout of the 2005 Crop Report. I wish to express my appreciation to the many individuals and organizations who contributed to making this report possible.

Respectfully submitted,

Steve Hajik
Agricultural Commissioner

COMMODITY	MARKET TYPE	YEAR	PRODUCTION (Tons)	YIELD (Tons/Acre)	RETURNS \$/Ton ¹	GROSS VALUE ¹	BEARING ACRES
WINE GRAPES							
Whites		2005	11,882	5.1	\$842	\$10,008,900	2,314
		2004	9,620	4.3	\$822	\$7,911,244	2,256
Reds		2005	20,113	3.9	\$1,399	\$28,140,200	5,204
		2004	18,252	3.8	\$1,306	\$23,839,411	4,820
TOTAL ALL WINE GRAPES		2005	31,995	4.3	\$1,192	\$38,149,100	7,518
		2004	27,872	3.9	\$1,139	\$31,751,000	7,076
PEARS							
Bartlett Including Red	Fresh	2005	11,060		\$776	\$8,581,000	
		2004	22,783		\$566	\$12,902,000	
	Cannery	2005	12,987		\$218	\$2,829,000	
		2004	17,343		\$192	\$3,332,000	
	Baby Food	2005	809		\$69	\$55,900	
		2004	1,449		\$72	\$103,700	
	By-products ²	2005	3,876		\$34	\$130,800	
		2004	5,857		\$67	\$390,800	
Total Bartlett		2005	28,732	12.3	\$404	\$11,597,000	2,330
		2004	47,432	19.9	\$353	\$16,729,000	2,383
Winter & Asian (Includes Bosc, Comice, Seckel)	Fresh	2005	948		\$911	\$864,000	
		2004	1,173		\$640	\$751,000	
	By-products	2005	227		\$20	\$4,535	
		2004	205		\$20	\$4,100	
Total Winter & Asian		2005	1,175	11.3	\$739	\$869,000	104
		2004	1,378	11.2	\$548	\$755,000	123
Red Pears other than Bartlett (Starkrimson)	Fresh	2005	334		\$1,167	\$390,072	
		2004	503		\$684	\$344,000	
	By-products	2005	149		\$54	\$8,086	
		2004	205		\$12	\$2,440	
Total Reds		2005	483	10.1	\$824	\$398,200	48
		2004	708	13.9	\$489	\$346,400	51
TOTAL ALL PEARS		2005	30,390	12.2	\$423	\$12,864,000	2,482
		2004	49,518	19.4	\$360	\$17,830,000	2,557
WALNUTS							
Irrigated Walnuts		2005	456	0.48	\$1,756	\$800,700	950
		2004	555	0.98	\$1,243	\$689,900	565
Non-Irrigated Walnuts		2005	367	0.21	\$1,756	\$645,000	1,745
		2004	1,529	0.71	\$1,243	\$1,901,000	2,141
TOTAL ALL WALNUTS		2005	823	0.31	\$1,756	\$1,445,700	2,695
		2004	2,084	0.77	\$1,243	\$2,590,900	2,706
MISCELLANEOUS FRUITS & NUTS							
MISCELLANEOUS FRUITS & NUTS ³		2005				\$142,241	86
		2004				\$244,000	218
TOTAL ALL FRUIT		2005				\$52,601,000	12,781
		2004				\$52,416,000	12,557

¹This is gross value and does not represent net return to the producer.



CROP		BEARING ACRES	NON-BEARING ACRES	TOTAL
PEARS	BARTLETT	2,330	0	2,330
	WINTER & ASIAN	104	3	107
	REDS	48	0	48
	TOTAL	2,482	3	2,485
WINE GRAPES	WHITES	2,314	433	2,747
	REDS	5,204	578	5,782
	TOTAL	7,518	1,011	8,529
WALNUTS		2,695	77	2,772
MISCELLANEOUS ¹		86		86
TOTAL		12,781	1,091	13,872

¹Includes apples, peaches, strawberries, melons, dried fruits, olives, etc.

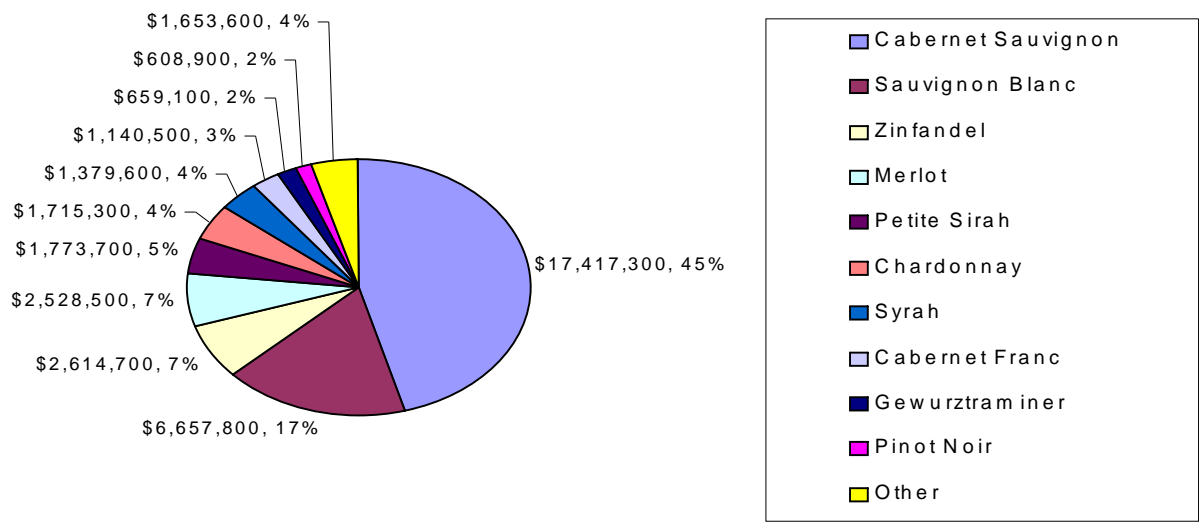


Variety	Production (Tons)	Returns (\$/Ton)	Gross Value
Cabernet Sauvignon	11,431	\$1,524	\$17,417,300
Sauvignon Blanc	7,885	\$844	\$6,657,800
Zinfandel	2,621	\$998	\$2,614,700
Merlot	2,263	\$1,117	\$2,528,500
Petite Sirah	1,296	\$1,368	\$1,773,700
Chardonnay	2,034	\$843	\$1,715,300
Syrah	1,167	\$1,182	\$1,379,600
Cabernet Franc	593	\$1,924	\$1,140,500
Gewurztraminer	824	\$800	\$659,100
Pinot Noir	300	\$2,030	\$608,900
Muscat Blanc	370	\$1,114	\$412,400
Semillon	390	\$764	\$298,000
Petit Verdot	126	\$1,360	\$171,600
Viognier	125	\$1,275	\$159,200
Malbec	84	\$1,627	\$137,300
Barbera	74	\$1,542	\$114,400
Tempranillo	51	\$1,683	\$85,000
Other	362	\$763	\$275,800
Total	31,995	\$1,192	\$38,149,100





TOP 10 WINE GRAPE VARIETIES





The Life of a Lake County Pear From Blossom to Market



BLOSSOMS

PETAL FALL



FRUIT SET



TURN DOWN



MATURE RIPE PEARS



SPRING TIME
FROST PROTECTION
WIND OR SPRINKLERS



WINTER TIME
PEARS NEED ABOUT 1000
HOURS OF COLD TIME



WINTER AND EARLY SPRING
TREES ARE PRUNED



WHEN THE PRESSURE IS BE-
TWEEN 18 AND 20 LBS, AND
SUGAR IS AROUND 10 PERCENT
BRIX,
PEARS ARE READY TO HARVEST



PEARS ARE PICKED
BY HAND, TO AVOID
BRUISING



PEARS ARE READY TO
TRANSFER FROM ORCHARD
TO PACKING SHED





**BIN DUMP
PEARS GO THROUGH
WASH, THEN ON TO SORTING**

**SORTING TABLE
SORTED FOR FRESH PACK,
CANNERY, BABY FOOD AND CULLS**



**SORTING AND
RESORTING FOR
CANNERY, BABYFOOD
AND CULLS**

**PACKED BINS
READY FOR CANNERY,
AND BABY FOOD**



**SIZER, SORTS BY WEIGHT OR
SIZE SO PACKED BOXES
HAVE THE SAME SIZE PEARS**

**HAND WRAPPED AND PACKED, OR
MACHINE TIGHT FILL PACK**



**PACKED BOXES
READY FOR FINAL
SORTING BY SIZE
ON TO PALLETS**

**PALLETS READY
FOR COLD
STORAGE AND
SHIPMENT TO
MARKET**



LAKE COUNTY PEAR HISTORY



1962 Pear Orchards in Kelseyville.
Gaddy Lane towards Kelseyville town.
Field's and Benson's Orchards on right

Pear orchards 1962
Merrit Road on left, towards Hwy 29
Hansen Orchard in foreground



Weed spraying



Aerial Spraying of Pears, Walnuts



Original Agricultural Office in Kelseyville



Weed Spraying by Agricultural Dept. 1960's



1938 Laughin Place, steaming pear trees for coddling moth larvae



New Agricultural Office in Lakeport, 1973-4

Don Eutenier, Farmer and

Pres. of Farm Bureau (doing the ribbon cutting).

Junior Wilds, Farmer and Supervisor, (white jacket, in front)

Chet Hemstreet, Farm Advisor (back right)

Charles Geoble, Agricultural Commissioner (back left)

HISTORICAL FACTS ABOUT LAKE COUNTY PEAR INDUSTRY

The first pears were planted in Lake County in the 1880's. The industry was viable by 1919 with a crop of 800 tons from 700 planted acres.

By 1930 there were 6,000 planted acres, with a production of 19,000 tons.

By 1964 there were 4,800 planted acres producing 62,500 tons.

The highest production year was 1982 with 86,754 tons from 5,480 acres.

The lowest production year was 1932 with just .63 tons per acre, producing 4,030 total tons.

2004 there were 2,557 planted acres with a production of 49,518 tons.

One of the oldest pear trees in Lake County, the "Grandfather Tree" located on the Henderson Ranch on Gaddy Lane, Kelseyville. Planted in the late 1800's. Shown by Diane Henderson



COMMODITY	YEAR	GREENHOUSE SQUARE FEET	FIELD ACRES	\$ VALUE
NURSERY ¹	2005	76,000	85	\$3,644,400
	2004	70,800	78	\$4,124,100

¹Includes turf and cut flowers

ITEM	YEAR	MBF ²	VALUE ³
Timber Yield	2005	100	\$29,520
	2004	486	\$62,530

¹Values furnished by the California State Board of Equalization

²Quantity of timber cut and scaled (Thousand Board Feet)

³Value of timber immediately before cutting



COMMODITY	YEAR	ACREAGE	UNIT	\$/UNIT	\$ VALUE
IRRIGATED PASTURE	2005	2,000	Acre	\$120.00	\$240,000
	2004	1,675	Acre	\$110.40	\$184,920
RANGE	2005	90,000	Acre	\$7.00	\$630,000
	2004	90,000	Acre	\$5.00	\$450,000
MISCELLANEOUS ¹	2005	3,624	Acre		\$1,398,058
	2004	2,874	Acre		\$1,450,000
TOTALS	2005	95,624			\$2,268,058
	2004	96,068			\$2,320,000

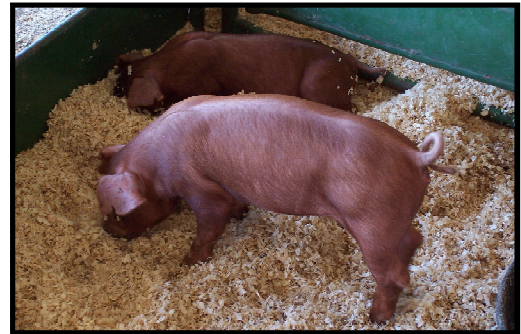
¹Includes alfalfa, oat hay, grass hay, wild rice.



COMMODITY	YEAR	NO. OF HEAD	TOTAL CWT ¹ (LIVE WT.)	\$ PER CWT	VALUE
CATTLE AND CALVES	2005	3,618	28,941	\$90.50	\$2,619,100
	2004	3,982	31,858	\$88.20	\$2,809,911
MISCELLANEOUS ²	2005				\$45,946
	2004				\$80,900
TOTALS	2005				\$2,665,000
	2004				\$2,891,000

¹CWT = 100 lbs.

²Includes goats, sheep, hogs, and rabbits.



COMMODITY	YEAR	\$ VALUE
MISCELLANEOUS ¹	2005	\$152,510
	2004	\$145,800

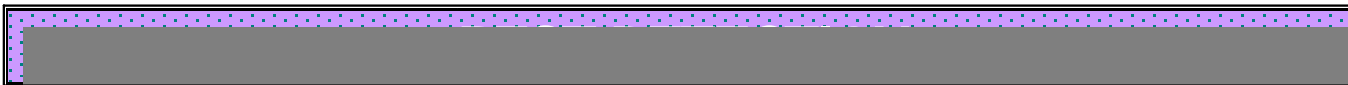
¹Includes apiary, eggs, cheese, and wool





COMMODITY	YEAR	ACRES	VALUES
Miscellaneous Vegetables ¹	2005	21	\$182,323
	2004	50	\$200,000

¹Includes pumpkins, beans, sweet corn, garlic, herbs, peas, potatoes, squash, tomatoes, etc.



TRAPS DEPLOYED	PROGRAM HOURS
85	612 (Up 250%)



URBAN TRAPS	PROGRAM HOURS
302	1595 (Up 40%)

¹Includes traps for Mediterranean Fruit Fly, Oriental Fruit Fly, Melon Fly, Gypsy Moth and Japanese Beetle



URBAN TRAPS	CROPLAND/NURSERY TRAPS	PROGRAM HOURS
110	63	926



NUMBER OF INSPECTIONS	PROGRAM HOURS
98	481.5



BIOLOGICAL CONTROL

Biological Control is the deliberate use of natural enemies to suppress or manage pest populations at acceptable levels.

PEST	AGENT/MECHANISM	SCOPE OF PROGRAM
Bull Thistle	Gall Fly	2 Sites, unknown establishment
Italian Thistle	Seed Head Weevil	Generally distributed
Klamath Weed	Klamath Weed Beetle	Widely distributed
Yellow Starthistle	Seed Head Weevil	Widely distributed
	Gall Fly	2 Sites
	Flower Weevil	1 Site
	Hairy Weevil	Becoming generally distributed
	Peacock Fly	Generally distributed
Red Gum Lerp Psyllid	Wasp (<i>Psyllaephagus bliteus</i>)	1 Site, well established
Puncture Vine	Stem Boring Weevil	Generally distributed

PEST ERADICATION

The following pests were under active control and eradication during the year: Dalmatian Toadflax, Scotch Thistle, Plumeless Thistle, Artichoke Thistle, Purple Starthistle, Oblong Spurge, Canada Thistle, Hydrilla*. *Hydrilla is a CDFA program supported by the Lake County Agriculture Department.

PEST EXCLUSION

Pest exclusion inspections are conducted daily at Post Offices and the U.P.S. terminal

PACKAGES PROFILED	PACKAGES INSPECTED	PACKAGES REJECTED
2579	590	0

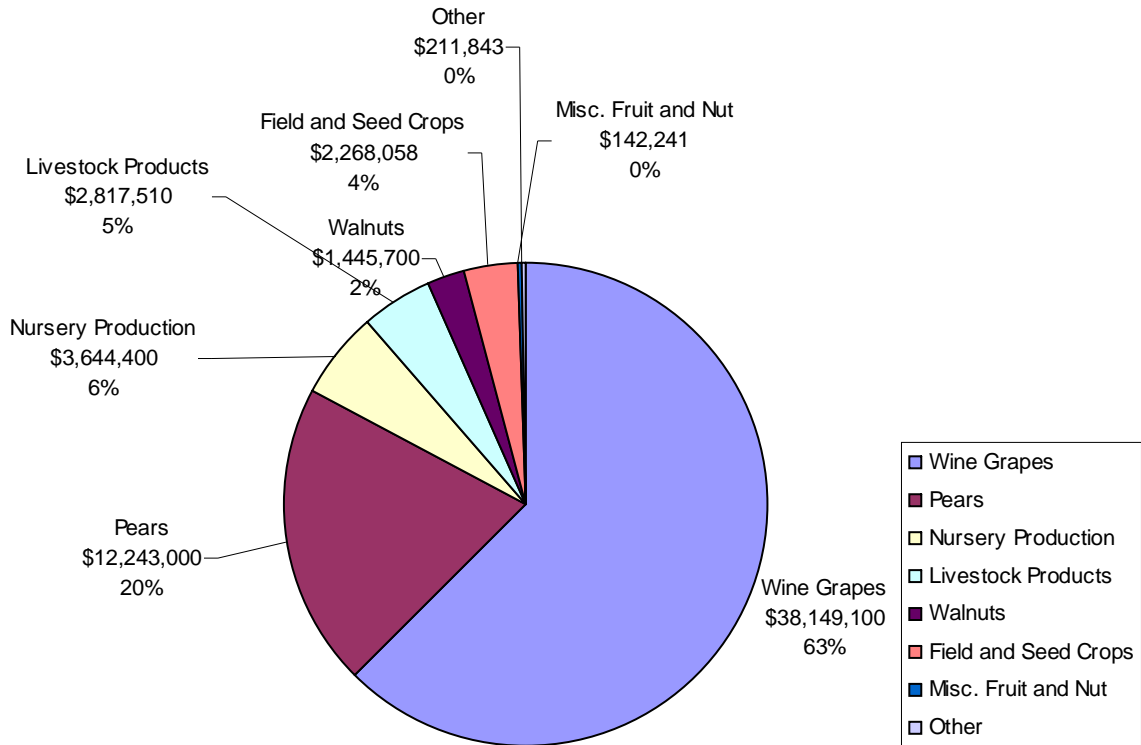
ORGANIC¹ FARMING STATISTICS

CROPS	NUMBER OF FARMS	ACRES
Walnuts	74	1748
Wine Grapes	10	221
Misc. Fruit	8	173
Misc. Vegetables	7	34
Nursery	2	3
Apples	3	5
Pears	7	64
TOTAL	111	2248

¹Registered organic with the Lake County Agricultural Commissioner



2005 AGRICULTURAL PRODUCTION BY COMMODITY



COMMODITY CLASS	YEAR	VALUE
FRUITS AND NUTS	2005	\$52,601,000
	2004	\$52,416,000
LIVESTOCK PRODUCTION	2005	\$2,665,000
	2004	\$2,891,000
LIVESTOCK & POULTRY PRODUCTS	2005	\$152,510
	2004	\$146,700
NURSERY PRODUCTION	2005	\$3,644,400
	2004	\$4,124,100
VEGETABLE CROPS	2005	\$182,323
	2004	\$200,000
FIELD CROPS	2005	\$2,268,058
	2004	\$1,676,000
FOREST PRODUCTS	2005	\$29,520
	2004	\$62,530
GRAND TOTAL	2005	\$61,542,811
	2004	\$61,516,000

LAKE COUNTY BOARD OF SUPERVISORS

Ed Robey, District 1
Jeff Smith, District 2
Gary Lewis, District 3
Anthony Farrington, District 4
Rob Brown, District 5

AGRICULTURAL COMMISSIONER
SEALER OF WEIGHTS & MEASURES

Steve Hajik

DEPUTY AGRICULTURAL COMMISSIONER
DEPUTY SEALER OF WEIGHTS & MEASURES

Chuck Morse

AGRICULTURAL BIOLOGISTS

Andrew Tritchler
Kristine Eutenier
Dana Thibeau
Denise Patrick

AGRICULTURAL AIDES

Marcy Harrison, Secretary
Tonja Dailey, Office Assistant

Lynn Eutenier
Kristi Bloomquist

FEDERAL WILDLIFE SERVICES STAFF

Scott Young
Greg Wamsley

COLOR PHOTOGRAPHY BY Kris Eutenier

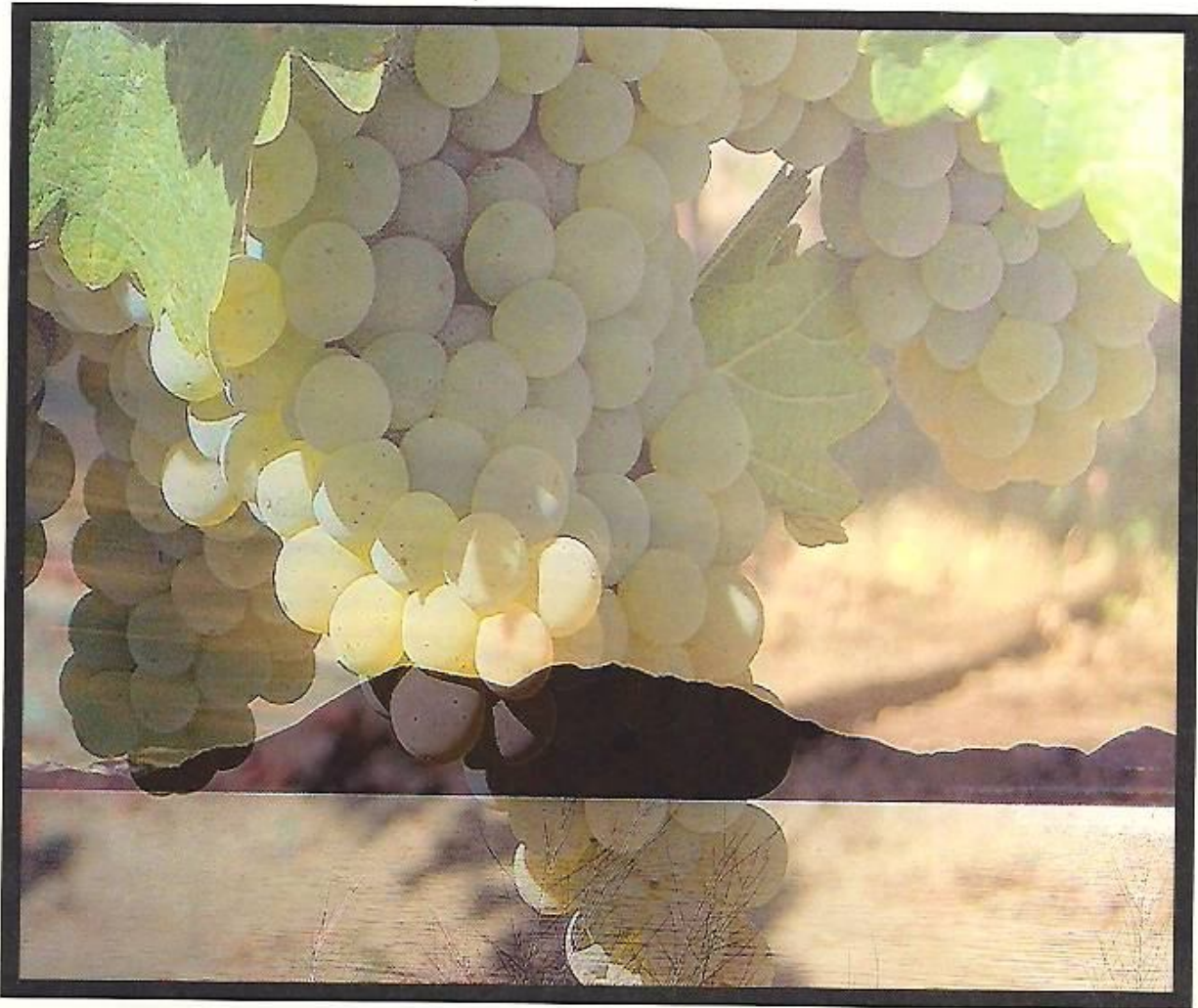
Left to Right

Kristine Eutenier, Biologist III, Wts. & Meas. III
Chuck Morse, Deputy Commissioner
Andrew Tritchler, Biologist III, Wts. & Meas. III
Steve Hajik, County Commissioner
Dana Thibeau, Biologist III, Wts. & Meas. III
Denise Patrick, Biologist III, Wts. & Meas. III



LAKE COUNTY

CROP REPORT



2006



COUNTY OF LAKE
Department of Agriculture
Department of Weights & Measures
883 Lakeport Blvd.
Lakeport CA 95453
Phone: (707) 263-0217
FAX: (707) 263-1052

STEVEN HAJIK
Agricultural Commissioner
Sealer of Weights & Measures

September 25, 2007

Mr. A.G. Kawamura, Secretary
California Department of Food and Agriculture
And
The Honorable Board of Supervisors of Lake County

It is my pleasure to present the Lake County Agricultural Report for the year 2006 in accordance with sections 2272 and 2279 of the California Agriculture Code. The gross value of Lake County agricultural production for 2006 was \$68,766,520. This is an increase of 11% from 2005. This increase is primarily due to significantly higher receipts for wine grapes and walnuts. **This report represents gross agricultural receipts and does not reflect production costs or net income to the producers.**

The gross value of wine grapes increased 12% in 2006. The total tonnage harvested increased by 9% and the total grape acreage decreased 2%. In addition, the tons per acre and the price per ton increased.

In 2006, the gross value of pears decreased 2% from 2005. The total production increased 21% and total pear acreage was reduced by 242 acres. Overall, prices per ton declined 23% from the previous year. Approximately 25% of the pear crop was never packed due to a labor shortage.

The gross value of walnuts and production tons increased 130% from 2005. The price per ton and acreage remained virtually unchanged.

Increases were noted in forest products (over 1,000%), nursery production (18%), and vegetable crops (33%). Decreases were noted in field crops (7%), livestock production (14%), and livestock and poultry products (12%).

The gross value of pears in this report represents the value of the pears after they are packed and processed. The figures do not indicate the value of the pears at the time of harvest or the gross income of the producers. The gross values of all other commodities in this report represent the value of each commodity at the time of harvest.

I would like to thank our staff Biologists Kris Eutenier and Dana Thibeau for their efforts in compiling the information, providing the photographs, and working on the layout of the 2006 Crop Report. I wish to express my appreciation to the many individuals and organizations who contributed to making this report possible.

Respectfully submitted,

Steve Hajik
Agricultural Commissioner

FRUIT AND NUT CROPS

COMMODITY	MARKET TYPE	YEAR	PRODUCTION TONS	YIELD TONS / ACRE	RETURNS \$/ TON ¹	GROSS VALUE ¹	BEARING ACRES	
WINE GRAPES								
WHITES		2006	14,722	6.0	\$903	\$13,290,300	2,447	
		2005	11,882	5.1	\$842	\$10,008,900	2,314	
REDS		2006	20,431	3.8	\$1,464	\$29,914,300	5,395	
		2005	20,113	3.9	\$1,399	\$28,140,200	5,204	
TOTAL ALL WINE GRAPES		2006	35,153	4.5	\$1,229	\$43,204,600	7,842	
		2005	31,995	4.3	\$1,192	\$38,149,100	7,518	
PEARS								
BARTLETT INCLUDING RED	FRESH	2006	16,426		\$504	\$8,285,000		
		2005	11,060		\$776	\$8,581,000		
	CANNERY	2006	14,553		\$202	\$2,941,000		
		2005	12,987		\$218	\$2,829,000		
	BABY FOOD	2006	2,160		\$37	\$80,400		
		2005	809		\$69	\$55,900		
	BY- PRODUCTS ²	2006	2,969		\$3	\$8,900		
		2005	3,876		\$34	\$130,800		
	TOTAL BARTLETT		2006	36,108	17.3	\$313	\$11,315,000	2,092
			2005	28,732	12.3	\$404	\$11,597,000	2,330
WINTER & ASIAN (INCLUDES BOSCO, COMICE, SECKEL)	FRESH	2006	1,154		\$678	\$782,313		
		2005	948		\$911	\$864,000		
	BY-PRODUCTS	2006	547		\$1	\$248		
		2005	227		\$20	\$4,535		
TOTAL WINTER & ASIAN		2006	1,701	16.2	\$460	\$783,000	105	
		2005	1,175	11.3	\$739	\$869,000	104	
RED PEARS OTHER THAN BARTLETT (STARKRIMSON)	FRESH	2006	554		\$920	\$510,221		
		2005	334		\$1,167	\$390,072		
	BY- PRODUCTS	2006	271		\$34	\$9,129		
		2005	149		\$54	\$8,086		
TOTAL REDS		2006	826	19.2	\$629	\$519,400	43	
		2005	483	10.1	\$824	\$398,200	48	
TOTAL ALL PEARS ⁴		2006	38,635	17.2	\$327	\$12,617,000	2,240	
		2005	30,390	12.2	\$423	\$12,864,000	2,482	
WALNUTS								
IRRIGATED WALNUTS		2006	1,047	1.10	\$1,755	\$1,837,500	952	
		2005	456	0.5	\$1,756	\$800,700	950	
NON-IRRIGATED WALNUTS		2006	864	0.49	\$1,755	\$1,515,000	1,750	
		2005	367	0.2	\$1,756	\$645,000	1,745	
TOTAL ALL WALNUTS		2006	1,911	0.71	\$1,755	\$3,352,900	2,702	
		2005	823	0.3	\$1,756	\$1,445,700	2,695	
MISCELLANEOUS FRUITS & NUTS								
MISCELLANEOUS ³		2006				\$142,241	86	
		2005				\$142,241	86	
TOTAL ALL FRUIT AND NUTS		2006				\$59,317,000	12,870	
		2005				\$52,601,000	12,781	

¹ THIS IS GROSS VALUE AND DOES NOT REPRESENT NET RETURN TO THE PRODUCER.

² INCLUDES DRIED PEARS ³ INCLUDES APPLES, PEACHES, STRAWBERRIES, MELONS, AND DRIED FRUITS

⁴ BASED ON CROP ESTIMATE, ABOUT 25% WAS NOT HARVESTED DUE TO LACK OF LABOR

FRUIT AND NUT ACREAGE

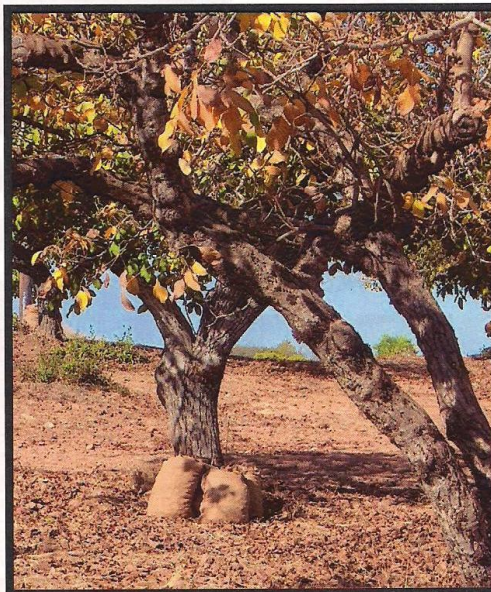
CROP		BEARING ACRES	NON-BEARING ACRES	TOTAL
PEARS	BARTLETT	2,092	0	2,092
	WINTER & ASIAN	105	3	108
	REDS	43	0	43
	TOTAL	2,240	3	2,243
WINE GRAPES	WHITES	2,447	280	2,727
	REDS	5,395	223	5,618
	TOTAL	7,842	503	8,345
WALNUTS		2,702	150	2,852
MISCELLANEOUS ¹		86	0	86
TOTAL		12,870	656	13,526

¹ INCLUDES APPLES, PEACHES, STRAWBERRIES, MELONS, DRIED FRUITS, OLIVES, ETC.



Bartlett Pear Blossoms

Harvested Walnuts
ready for transport to dryer





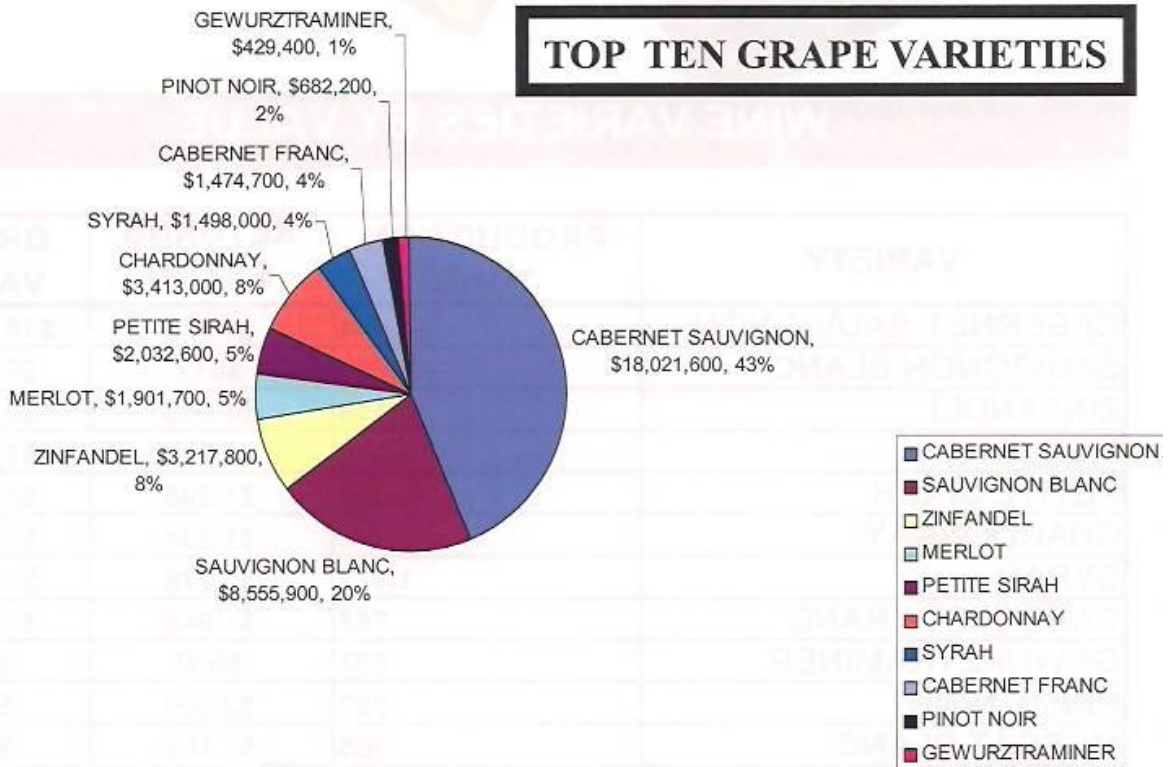
WINE VARIETIES BY VALUE

VARIETY	PRODUCTION TONS	RETURNS \$/ TON	GROSS VALUE
CABERNET SAUVIGNON	11,444	\$1,575	\$18,021,600
SAUVIGNON BLANC	10,531	\$812	\$8,555,900
ZINFANDEL	3,116	\$1,033	\$3,217,800
MERLOT	1,572	\$1,210	\$1,901,700
PETITE SIRAH	1,454	\$1,398	\$2,032,600
CHARDONNAY	2,448	\$1,394	\$3,413,000
SYRAH	1,172	\$1,278	\$1,498,000
CABERNET FRANC	757	\$1,948	\$1,474,700
GEWURZTRAMINER	537	\$800	\$429,400
PINOT NOIR	227	\$3,000	\$682,200
MUSCAT BLANC	365	\$1,102	\$402,300
SEMILLON	254	\$751	\$190,700
PETIT VERDOT	176	\$1,512	\$265,500
VIOGNIER	76	\$1,335	\$102,000
MALBEC	190	\$1,649	\$312,500
BARBERA	96	\$1,440	\$137,600
TEMPRANILLO	69	\$1,806	\$123,900
WHITE RIESLING	111	\$1,297	\$144,000
GRENACHE	78	\$1,700	\$131,900
OTHER	482	\$347	\$167,300
TOTAL	35,153	\$1,229	\$43,204,600



Vineyard at the foot of
Mount Konocti

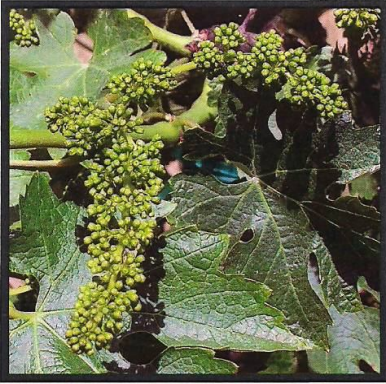
TOP TEN GRAPE VARIETIES



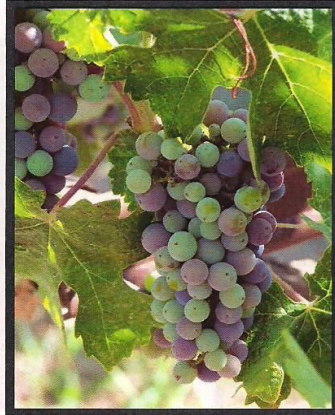
Fall vineyard, above Red Hills



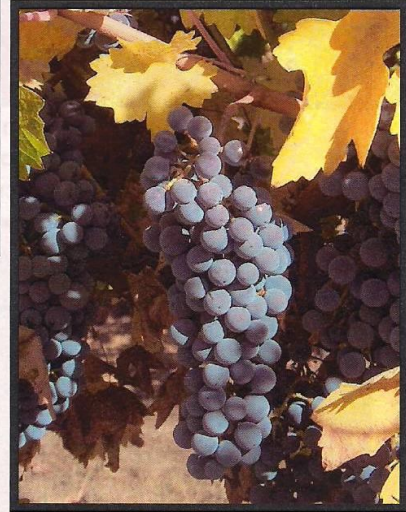
STAGES OF GRAPE DEVELOPMENT



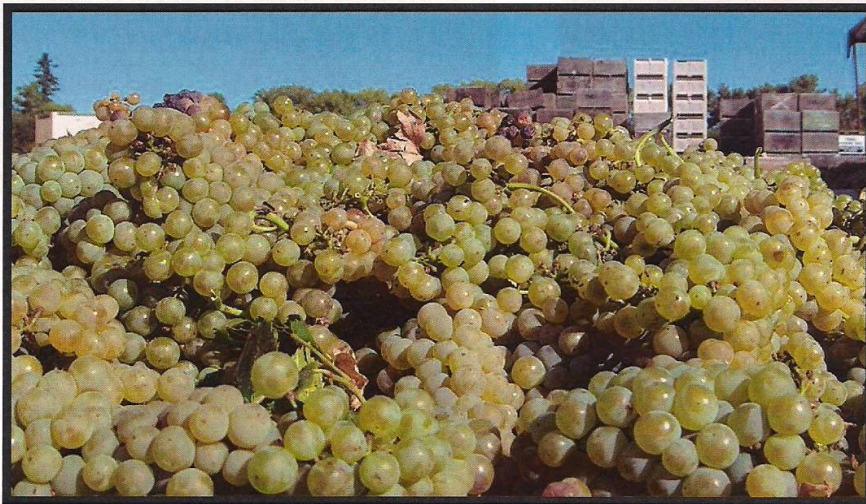
Berry Set



Veraison

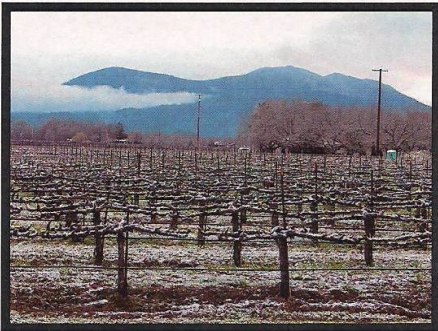


Maturity

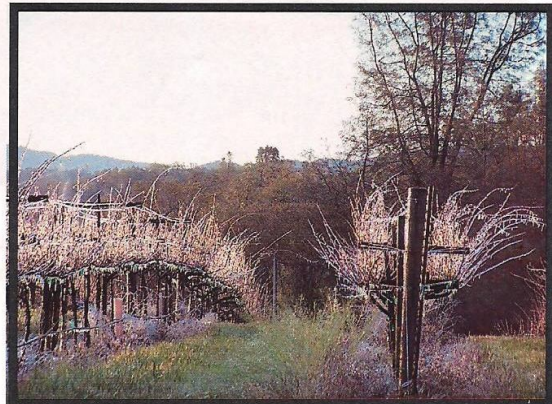


Harvest

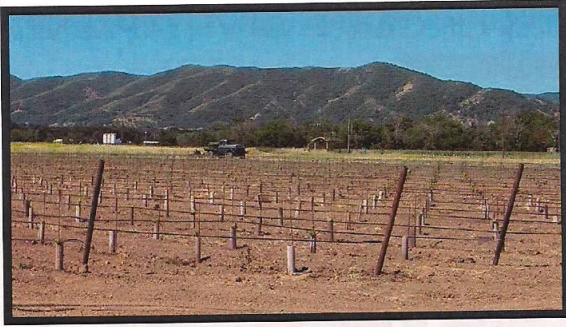
Frost Protection



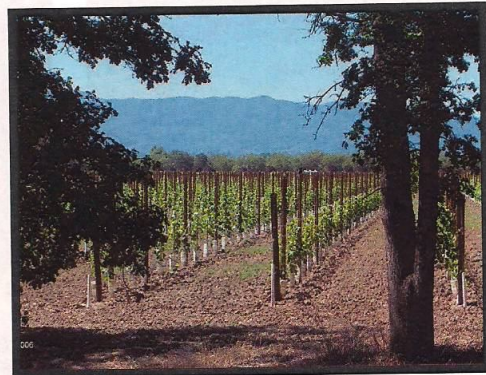
Winter Time Dormant



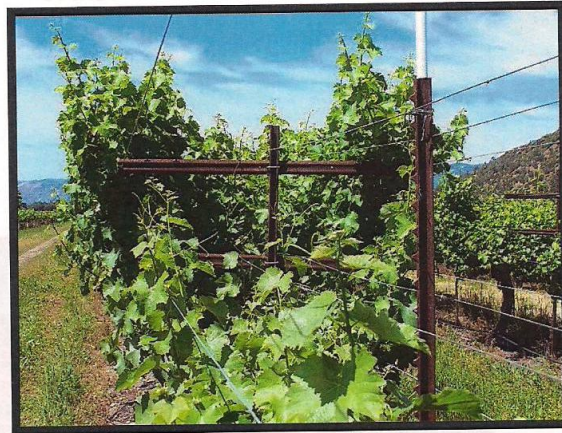
VINEYARD CARE



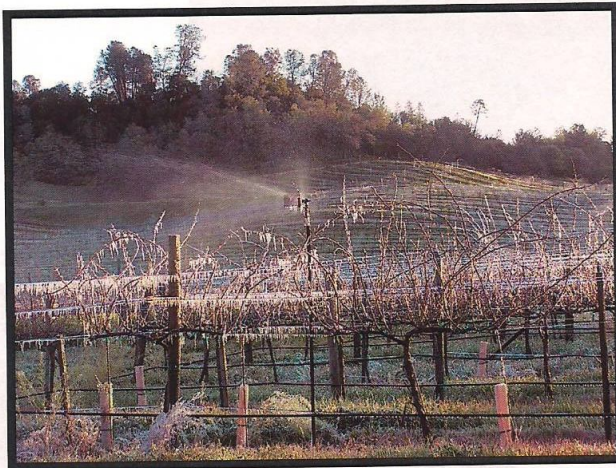
Newly planted vineyard; grow tubes or cartons are used for young plant protection.



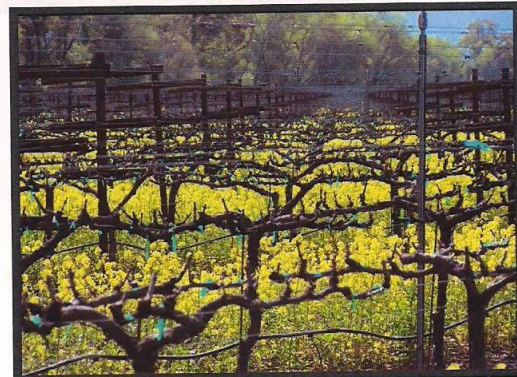
Vines are pruned during the winter and early spring.



One type of trellis: this system allows more sunlight into the center of the canopy.

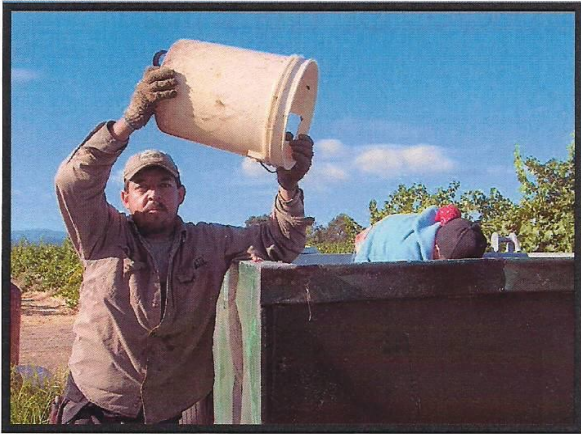


Frost protection is required in the Spring and Fall. As long as water is being added to the ice, or the temperature rises to melt the ice, the vines won't freeze inside the coating of ice



During the Spring, mustard or other cover crops grow in the vineyard rows.

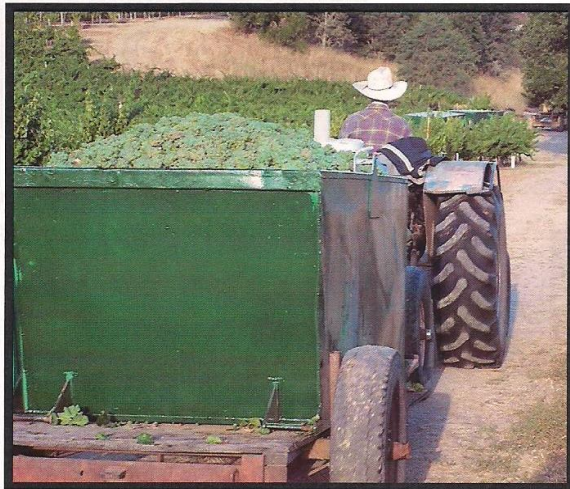
HARVEST



Grapes are handpicked and loaded in gondolas.



The gondola is moved to keep up with the picking crew. At this time leaves are removed as much as possible.



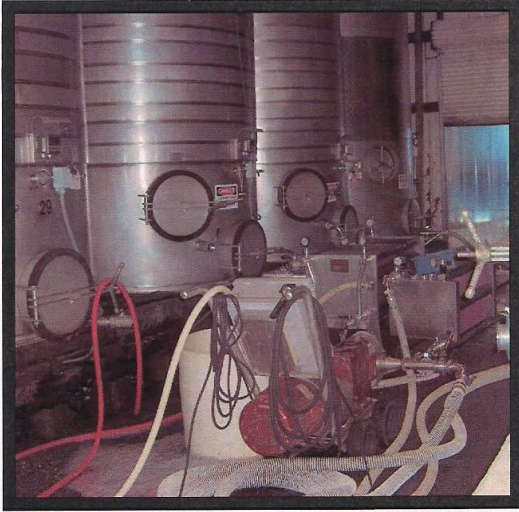
Fully loaded gondola goes to the loading area.



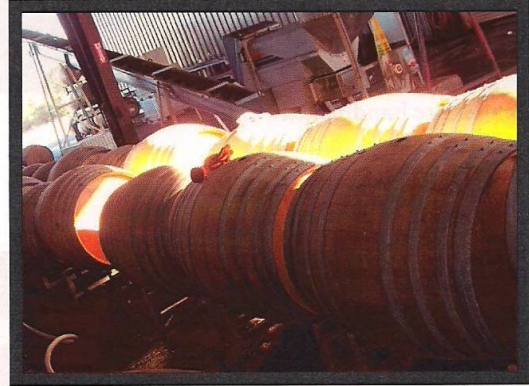
Loading gondolas for delivery to the winery



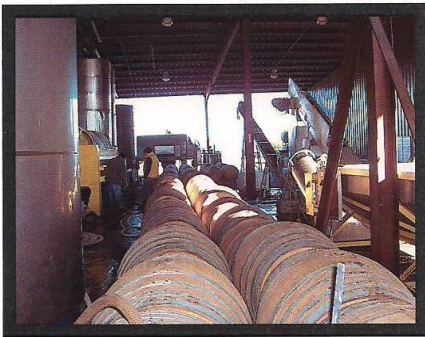
MAKING OF THE WINE



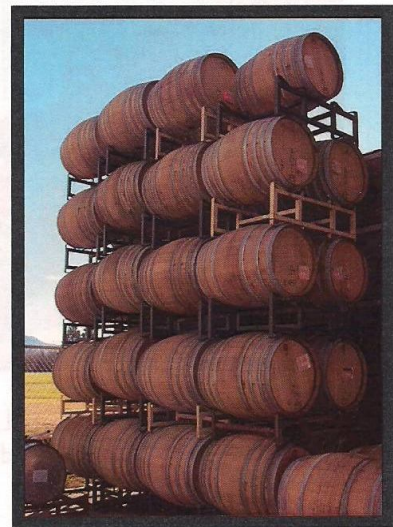
Cooled tanks, with a filtering system where yeast is added . Then futher filtering and aging takes place. Some wines are kept in the steel tanks until ready for bottling.



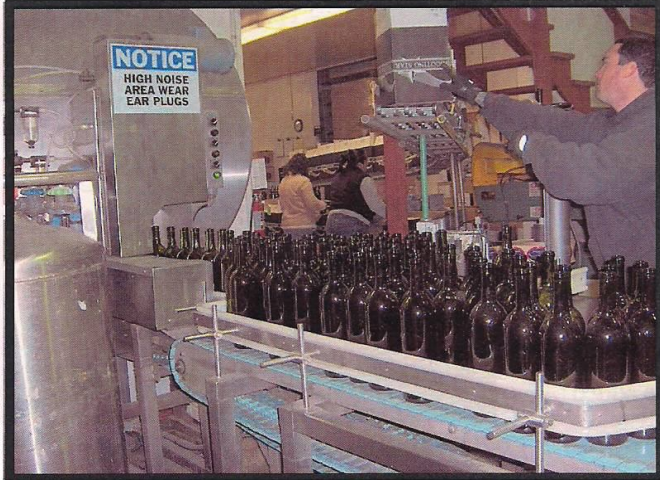
Mostly reds are aged in oak barrels, but some whites are also given some time in oak.



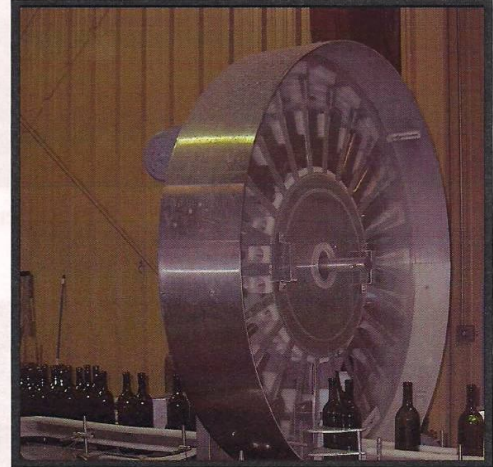
Barrels waiting to be filled



THE BOTTLING LINE



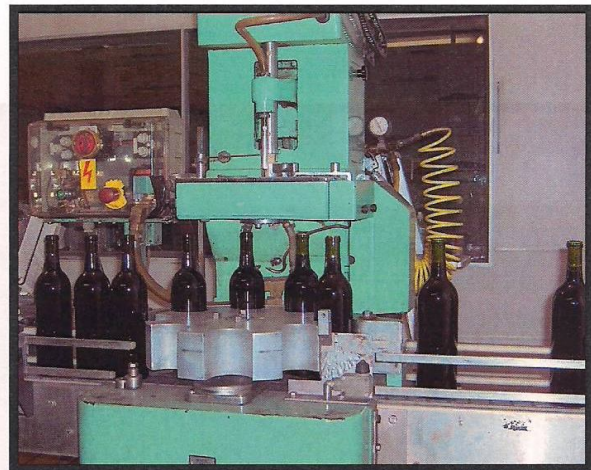
New bottles are taken from the boxes and loaded on the belt at the beginning of the bottling line.



Empty bottles are being cleaned and readied for filling.



Bottles being filled with wine



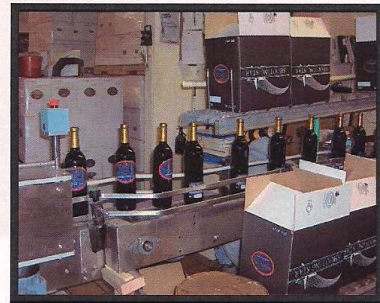
Corks being put in filled bottles



Foil covers are added



Labels
finish the bottling
task

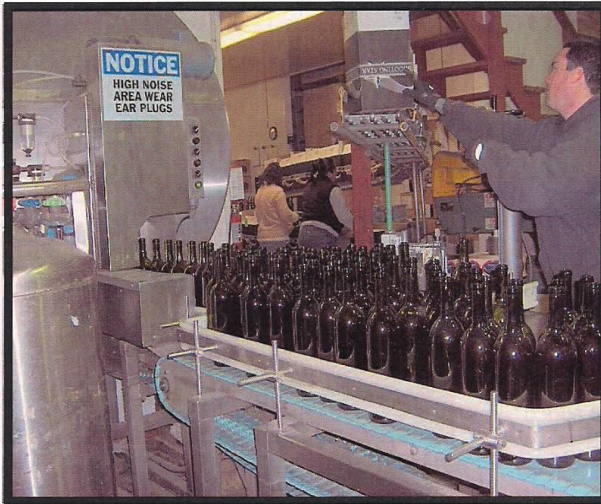


Filled and finished bottles
head back to waiting boxes

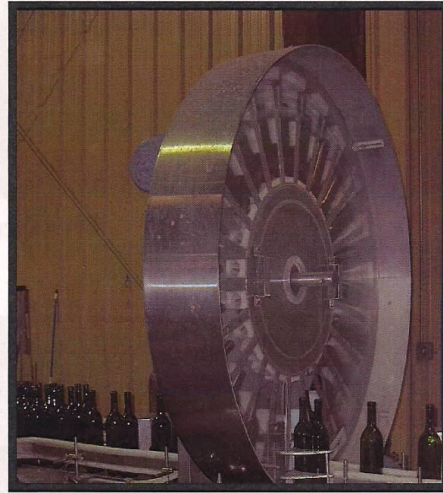


Finished product
on display
ready for purchase

THE BOTTLING LINE



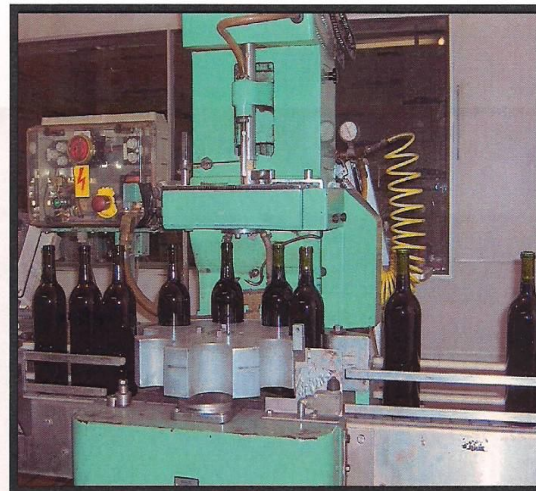
New bottles are taken from the boxes and loaded on the belt at the beginning of the bottling line.



Empty bottles are being cleaned and readied for filling.



Bottles being filled with wine

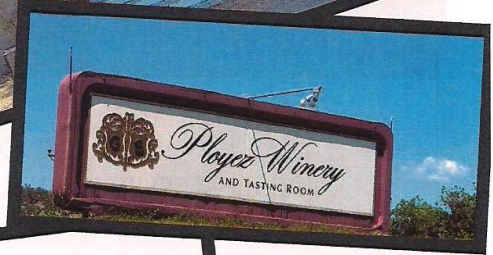
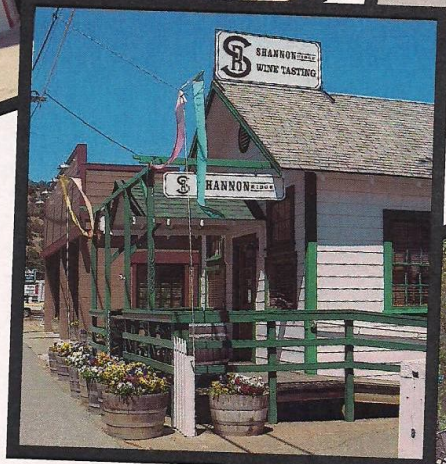
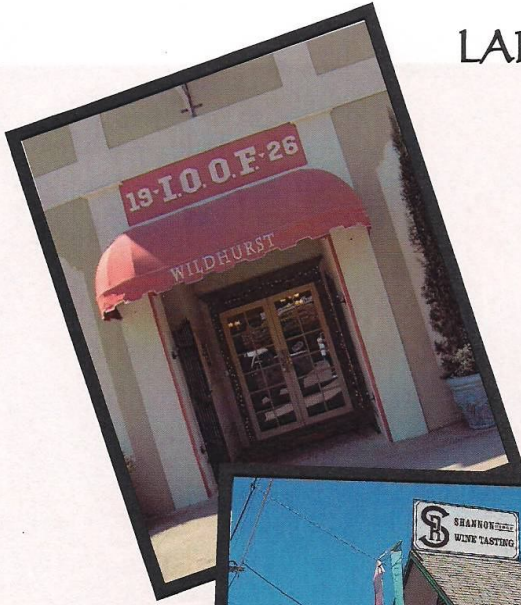


Corks being put in filled bottles



LAKE COUNTY WINES OF 2006
PRESENTED BY WINERIES USING ALL LAKE COUNTY GRAPES

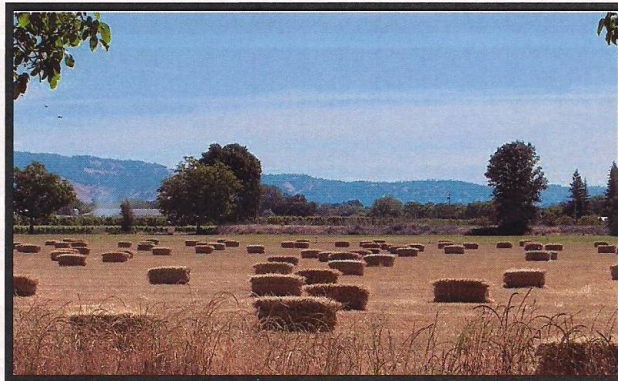
LAKE COUNTY WINERIES



FIELD AND SEED CROPS

COMMODITY	YEAR	ACREAGE	UNIT	\$/UNIT	VALUE
IRRIGATED PASTURE	2006	2,000	ACRE	\$ 120.00	\$ 240,000.00
	2005	2,000	ACRE	\$ 120.00	\$ 240,000.00
RANGE	2006	90,000	ACRE	\$ 7.00	\$ 630,000.00
	2005	90,000	ACRE	\$ 7.00	\$ 630,000.00
MISCELLANEOUS ¹	2006	2,200	ACRE		\$ 1,250,000.00
	2005	3,624	ACRE		\$ 1,398,058.00
TOTALS	2006	94,200			\$ 2,120,000.00
	2005	95,624			\$ 2,268,058.00

¹ INCLUDES ALFALFA, OAT HAY, GRASS HAY, WILD RICE



Oat hay, harvested, ready for storage

NURSERY PRODUCTION

COMMODITY	YEAR	GREENHOUSE SQUARE FEET	FIELD ACRES	VALUE
NURSERY ¹	2006	75,900	74.6	4,318,395.00
	2005	76,000	85	\$ 3,644,400.00

¹ INCLUDES TURF AND CUT FLOWERS

TIMBER HARVEST¹

ITEM	YEAR	MBF ²	VALUE ³
TIMBER YIELD	2006	928	\$ 339,069
	2005	100	\$ 29,520

¹ VALUES FURNISHED BY THE CALIFORNIA STATE BOARD OF EQUALIZATION

² QUANTITY OF TIMBER CUT AND SCALED (THOUSAND BOARD FEET)

³ VALUE OF TIMBER IMMEDIATELY BEFORE CUTTING

VEGETABLE CROPS

COMMODITY	YEAR	ACRES	VALUE
MISCELLANEOUS VEGETABLES ¹	2006	50	\$ 242,355.00
	2005	21	\$ 182,323.00

¹ INCLUDES PUMPKINS, BEANS, SWEET CORN, GARLIC, HERBS, PEAS, POTATOES, SQUASH, TOMATOES, ETC.



LIVESTOCK PRODUCTION

COMMODITY	YEAR	NO. OF HEAD	TOTAL CWT ¹ (LIVE WT.)	\$ PER CWT	VALUE
CATTLE AND CALVES	2006	3,515	28,123	\$80.00	\$2,249,900
	2005	3,618	28,941	\$90.50	\$2,619,100
MISCELLANEOUS ²	2006				\$45,946
	2005				\$80,900
TOTALS	2006				\$2,296,000
	2005				\$2,665,000

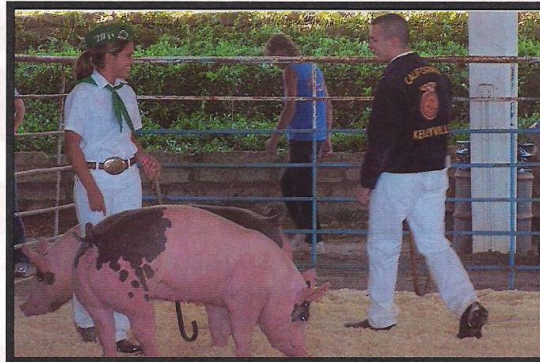
¹ CWT = 100 LBS

² INCLUDES GOATS, SHEEP, HOGS AND RABBITS

LIVESTOCK AND POULTRY PRODUCTS

COMMODITY	YEAR	VALUE
MISCELLANEOUS ¹	2006	\$ 133,701.00
	2005	\$ 152,510.00

¹ INCLUDES APIARY, EGGS, CHEESE AND WOOL



4H and FFA Show and Sale at the Fair

SUSTAINABLE AGRICULTURE REPORT

BIOLOGICAL CONTROL

BIOLOGICAL CONTROL IS THE DELIBERATE USE OF NATURAL ENEMIES TO SUPPRESS OR MANAGE PEST POPULATIONS AT ACCEPTABLE LEVELS.

PEST	AGENT / MECHANISM	SCOPE OF PROGRAM
BULL THISTLE	GALL FLY	2 SITES, UNKNOWN ESTABLISHMENT
ITALIAN THISTLE	SEED HEAD WEEVIL	GENERALLY DISTRIBUTED
KLAMATH WEED	KLAMATH WEED BEETLE	WIDELY DISTRIBUTED
YELLOW STARHISTLE	SEED HEAD WEEVIL	WIDELY DISTRIBUTED
	GALL FLY	2 SITES, UNKNOWN ESTABLISHMENT
	FLOWER WEEVIL	1 SITE
	HAIRY WEEVIL	BECOMING GENERALLY DISTRIBUTED
	PEACOCK FLY	GENERALLY DISTRIBUTED
RED GUM LERP PSYLLID	WASP (<i>Psyllaephagus bliteus</i>)	4 SITES, Unknown Establishment
PUNCTURE VINE	STEM BORING WEEVIL	1 SITE, WELL ESTABLISHED
		GENERALLY DISTRIBUTED

PEST ERADICATION

THE FOLLOWING PESTS WERE UNDER ACTIVE CONTROL AND ERADICATION DURING THE YEAR: DALMATIAN TOADFLAX, SCOTCH THISTLE, PLUMELESS THISTLE, ARTICHOKE THISTLE, PURPLE STARHISTLE, OBLONG SPURGE, CANADA THISTLE, HYDRILLA*, *HYDRILLA IS A CDFA PROGRAM SUPPORTED BY THE LAKE COUNTY AGRICULTURE DEPARTMENT.

PEST EXCLUSION

PEST EXCLUSION INSPECTIONS ARE CONDUCTED DAILY AT POST OFFICES AND THE U.P.S. TERMINAL

PACKAGES PROFILED	PACKAGES INSPECTED	PACKAGES REJECTED
2966	563	8

ORGANIC¹ FARMING STATISTICS

CROPS	NUMBER OF FARMS	ACRES
WALNUTS	73	1538
WINE GRAPES	7	126
MISC. FRUIT	8	37
MISC. VEGETABLES	7	13
NURSERY	2	10
APPLES	3	3
PEARS	4	51
TOTAL	104	1778

¹ REGISTERED ORGANIC WITH THE LAKE COUNTY AGRICULTURAL COMMISSIONER

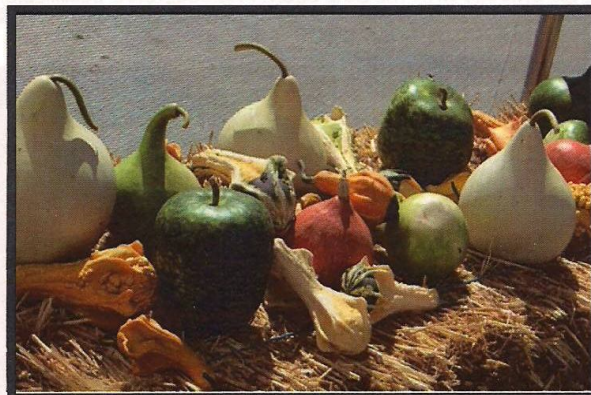


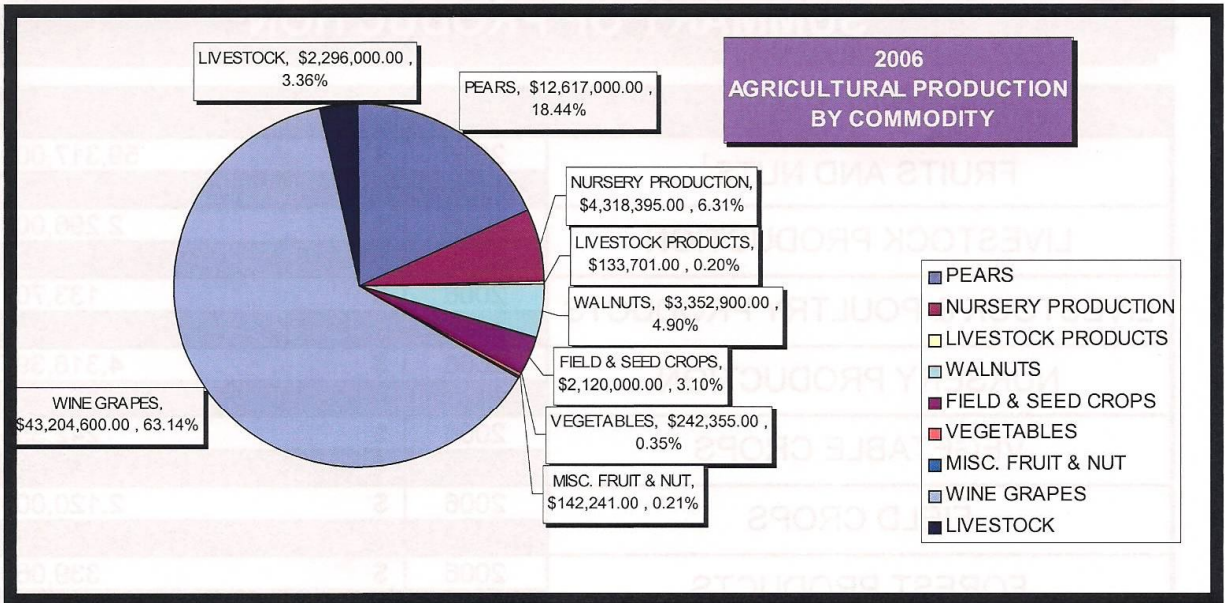
County Insect Trappers



Checking for Glassy-winged Sharp-shooter

PEST DETECTION		
VINE MEALY BUG		
TRAPS DEPLOYED	PROGRAM HOURS	
95	383	
EXOTIC INSECT PESTS ¹		
URBAN TRAPS	PROGRAM HOURS	
297	1403.5	
¹ INCLUDES TRAPS FOR MEDITERRANEAN FRUIT FLY, ORIENTAL FRUIT FLY, MELON FLY, GYPSY MOTH AND JAPANESE BEETLE		
GLASSY-WINGED SHARPSHOOTER TRAPPING		
URBAN TRAPS	NURSERY TRAPS	PROGRAM HOURS
110	33	756
GLASSY-WINGED SHARPSHOOTER NURSERY SHIPMENT INSPECTIONS		
NUMBER OF INSPECTIONS	PROGRAM HOURS	
87	502.5	





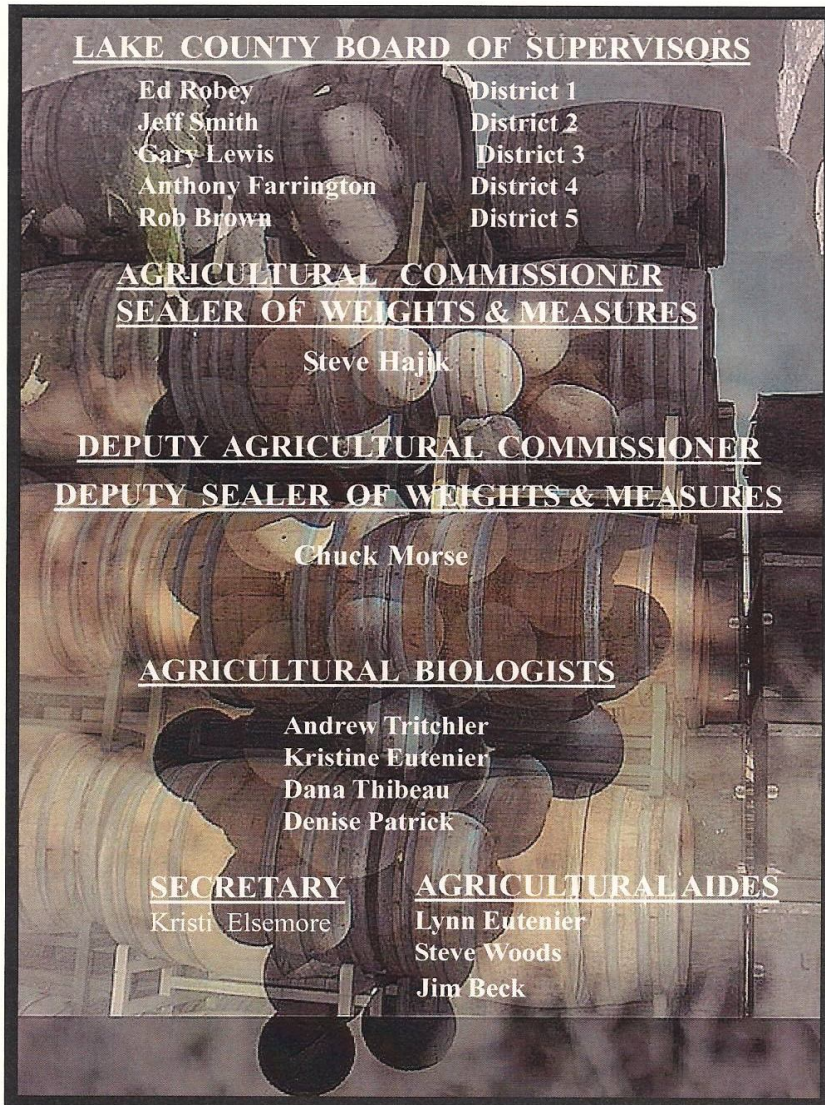
SUMMARY OF PRODUCTION

COMMODITY CLASS	YEAR	VALUE
FRUITS AND NUTS ¹	2006	\$ 59,317,000.00
	2005	\$ 52,601,000.00
LIVESTOCK PRODUCTION	2006	\$ 2,296,000.00
	2005	\$ 2,665,000.00
LIVESTOCK & POULTRY PRODUCTS	2006	\$ 133,701.00
	2005	\$ 152,510.00
NURSERY PRODUCTION	2006	\$ 4,318,395.00
	2005	\$ 3,644,400.00
VEGETABLE CROPS	2006	\$ 242,355.00
	2005	\$ 182,323.00
FIELD CROPS	2006	\$ 2,120,000.00
	2005	\$ 2,268,058.00
FOREST PRODUCTS	2006	\$ 339,069.00
	2005	\$ 29,520.00
GRAND TOTAL	2006	\$ 68,766,520.00
	2005	\$ 61,542,811.00

¹ INCLUDES, GRAPES, PEARS, WALNUTS AND MISCELLANEOUS FRUIT AND NUTS



Sunrise over Mt. Konocti



FEDERAL WILDLIFE SERVICES STAFF

Greg Wamsley

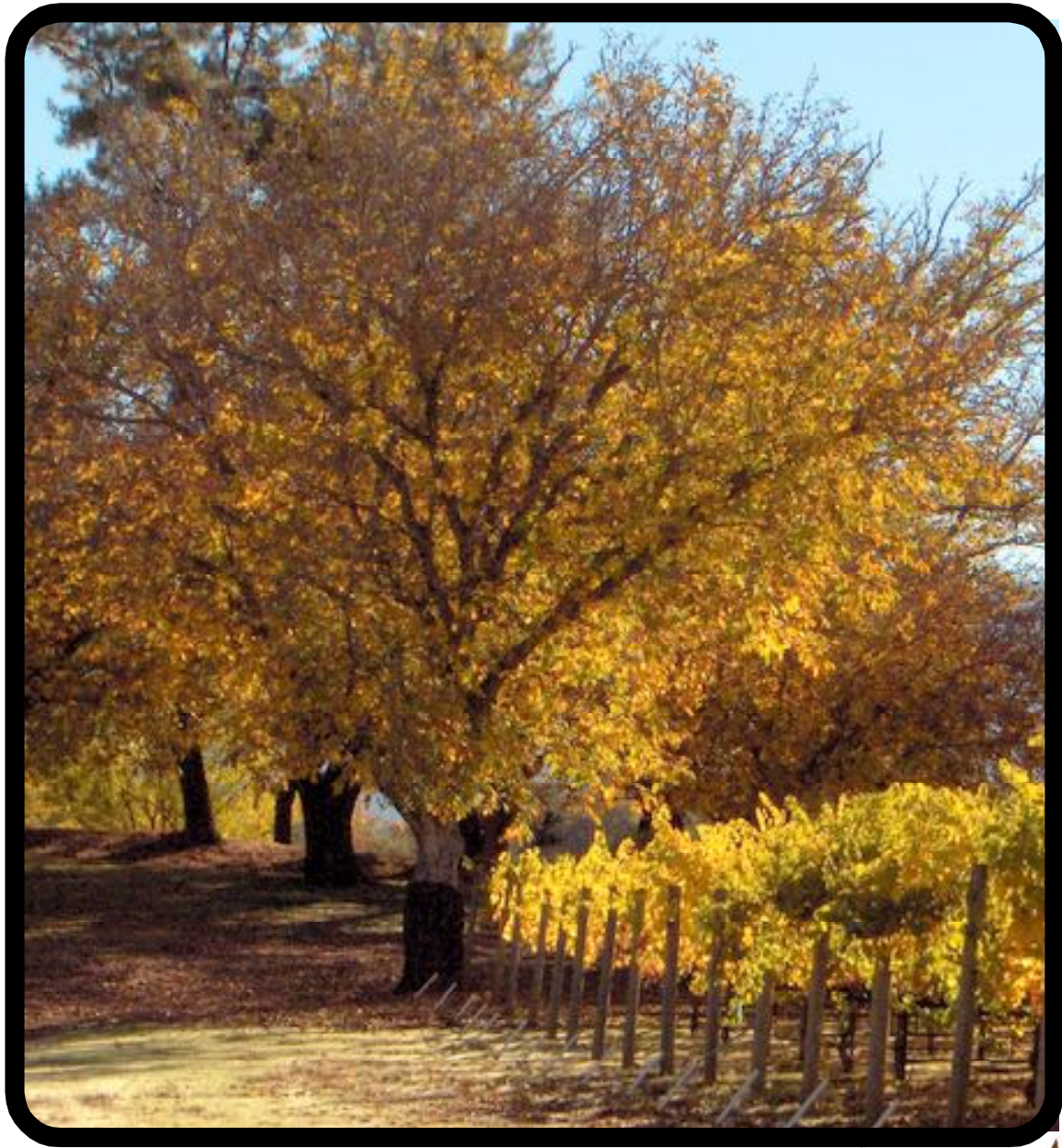
Larry Johnson

The 2006 Lake County Staff

Left to Right
Steve Woods, Andrew Tritchler,
Steve Hajik, Dana Thibeau, Kristi Elsemore,
Kristine Eutenier, Denise Patrick,
Chuck Morse, Lynn Eutenier

PHOTOGRAPHY BY Kris Eutenier





LAKE COUNTY

2007

CROP REPORT



letter

COMMODITY	MARKET TYPE	YEAR	PRODUCTION (Tons)	YIELD (Tons/Acre)	RETURNS \$/Ton1	GROSS VALUE1	BEARING ACRES
WINE GRAPES							
Whites		2007	13,980.5	5.6	\$939.29	\$13,131,700.00	2,494
		2006	11,881.8	5.1	\$842.37	\$10,008,900.00	2,447
Reds		2007	22,340.9	4.1	\$1,357.04	\$30,317,600.00	5,455
		2006	20,113.3	3.9	\$1,399.08	\$28,140,200.00	5,395
TOTAL ALL WINE GRAPES		2007	36,321.4	4.6	\$1,196.25	\$43,449,300.00	7,949
		2006	31,995.1	4.3	\$1,192.34	\$38,149,100.00	7,842
PEARS							
Bartlett Including Red	Fresh	2007	17,593.0		\$526.08	\$9,255,000.00	
		2006	16,426.0		\$504.00	\$8,285,000.00	
	Cannery	2007	14,709.0		\$210.81	\$3,101,000.00	
		2006	14,553.0		\$271.00	\$39,647.00	
	Baby Food	2007	1,282.0		\$54.92	\$70,400.00	
		2006	2,160.0		\$37.00	\$80,400.00	
By-products	2007	2,476.0		\$31.16	\$77,200.00		
	2006	2,969.0	3,932.0	\$4,895.00	\$5,858.00		
Total Bartlett		2007	36,060.0	17.4	\$346.76	\$12,504,000.00	2,078
		2006	36,108.0	17.3	\$232.94	\$8,411,000.00	2,092
Winter & Asian (Includes Bosc, Comice, Seckel)	Fresh	2007	716.3		\$1,191.07	\$853,104.62	
		2006	1,154.0		\$678.00	\$782,313.00	
	By-products	2007	314.6		\$17.15	\$5,395.64	
		2006	547.0		\$1.00	\$248.00	
Total Winter & Asian		2007	1,030.9	11.8	\$833.26	\$859,000.00	87
		2006	1,701.0	16.2	\$460.06	\$782,561.00	105
Red Pears other than Bartlett (Starkrimson)	Fresh	2007	488.2		\$1,248.32	\$609,477.43	
		2006	554.0		\$920.00	\$510,221.00	
	By-products	2007	168.0		\$17.41	\$2,925.12	
		2006	271.0		\$34.00	\$9,129.00	
Total Reds		2007	656.3	15.3	\$933.15	\$612,400.00	43
		2006	825.0	19.2	\$629.52	\$519,350.00	43
TOTAL ALL PEARS		2007	37,747.2	17.1	\$370.23	\$13,975,000.00	2,208
		2006	38,635.0	17.2	\$327.00	\$12,617,000.00	2,240
WALNUTS							
Irrigated Walnuts		2007	761.6	0.8	\$2,914.00	\$2,219,300.00	952
		2006	1,047.2	1.1	\$1,754.67	\$1,837,500.00	952
Non-Irrigated Walnuts		2007	622.1	0.4	\$2,914.00	\$1,813,000.00	1,750
		2006	863.6	0.5	\$1,754.67	\$1,515,000.00	1,750
TOTAL ALL WALNUTS		2007	1,383.7	0.5	\$2,914.00	\$4,032,200.00	2,702
		2006	1,910.8	0.7	\$1,754.67	\$3,352,900.00	2,702
MISCELLANEOUS FRUITS & NUTS							
MISCELLANEOUS		2007				\$138,400.00	70
TOTAL ALL PEARS		2007	37,747.2	17.1	\$370.23	\$13,975,000.00	2,208
		2006	38,635.0	17.2	\$327.00	\$12,617,000.00	2,240
WALNUTS							
Irrigated Walnuts		2007	761.6	0.8	\$2,914.00	\$2,219,300.00	952
		2006	1,047.2	1.1	\$1,754.67	\$1,837,500.00	952
Non-Irrigated Walnuts		2007	622.1	0.4	\$2,914.00	\$1,813,000.00	1,750
		2006	863.6	0.5	\$1,754.67	\$1,515,000.00	1,750
TOTAL ALL WALNUTS		2007	1,383.7	0.5	\$2,914.00	\$4,032,200.00	2,702
		2006	1,910.8	0.7	\$1,754.67	\$3,352,900.00	2,702
MISCELLANEOUS FRUITS & NUTS							
MISCELLANEOUS FRUITS & NUTS ²		2007				\$138,400.00	70
		2006				\$142,241.00	86
TOTAL ALL FRUIT & NUT CROPS		2007				\$61,595,000.00	12,929
		2006				\$59,317,000.00	12,781

CROP		BEARING ACRES	NON-BEARING ACRES	TOTAL
PEARS	BARTLETT	2,078	4	2,082
	WINTER & ASIAN	87	0	87
	REDS	43	0	43
	TOTAL	2,208	4	2,212
WINE GRAPES	WHITES	2,494	280	2,774
	REDS	5,455	116	5,571
	TOTAL	7,949	396	8,345
WALNUTS		2,702	150	2,852
MISCELLANEOUS ¹		70		70
TOTAL		12,929	550	13,479

¹Includes apples, peaches, strawberries, melons, dried fruits, olives, etc.

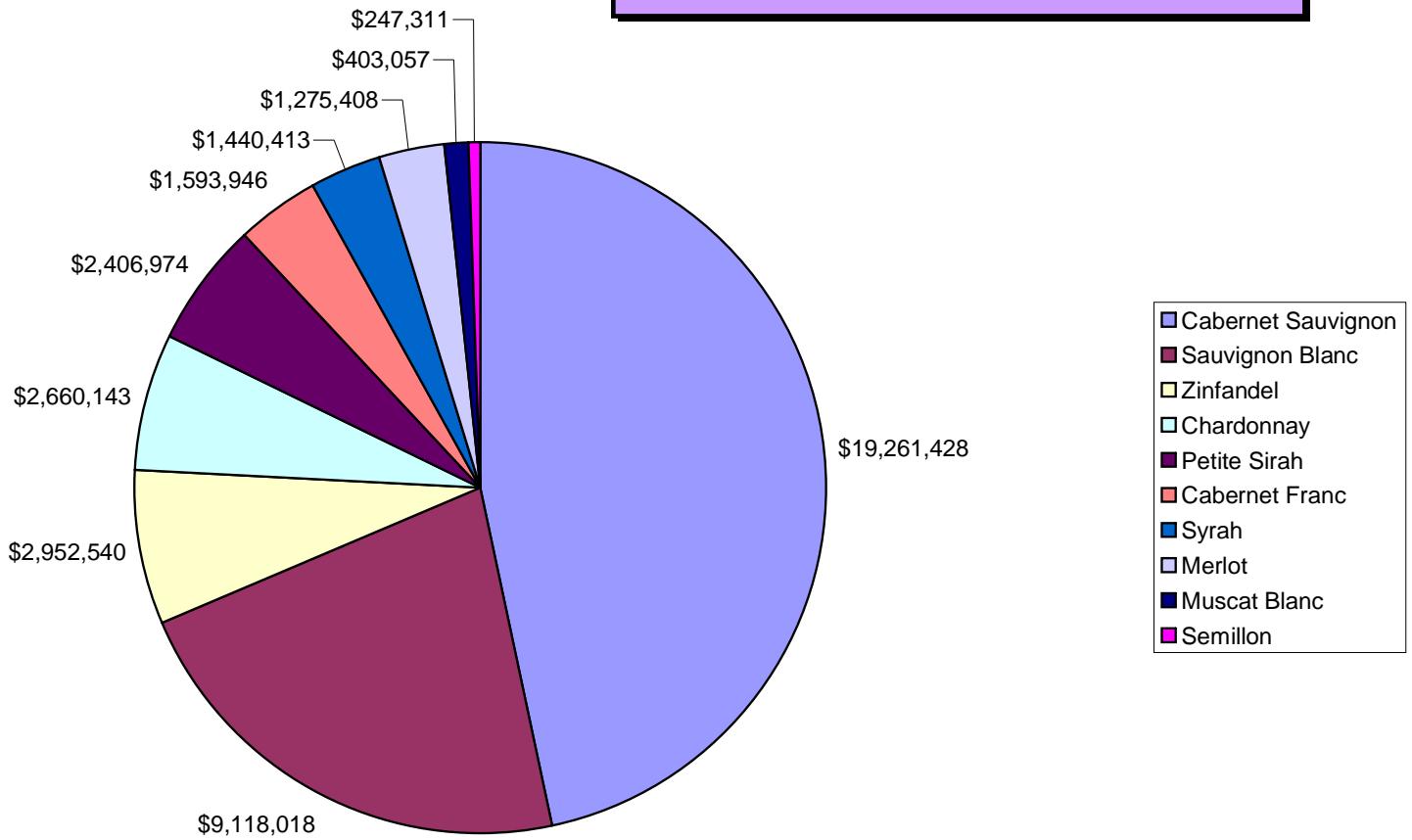


WINE VARIETIES BY VALUE

Variety	Production (Tons)	Returns/Ton	Gross Value
Cabernet Sauvignon	13,750.6	\$1,400.77	\$19,261,428
Sauvignon Blanc	10,314.5	\$884.00	\$9,118,018
Zinfandel	2,455.6	\$1,202.37	\$2,952,540
Chardonnay	1,992.9	\$1,334.81	\$2,660,143
Petite Sirah	1,662.7	\$1,447.63	\$2,406,974
Cabernet Franc	872.1	\$1,827.71	\$1,593,946
Syrah	1,192.0	\$1,208.40	\$1,440,413
Merlot	1,633.4	\$780.83	\$1,275,408
Muscat Blanc	349.6	\$1,152.91	\$403,057
Semillon	263.7	\$937.85	\$247,311
Pinot Noir	86.2	\$2,772.67	\$239,004
Pinot Gris	182.3	\$1,291.18	\$235,382
Petit Verdot	129.0	\$1,640.98	\$211,686
Malbec	120.7	\$1,747.32	\$210,902
Tempranillo	94.1	\$2,030.28	\$191,049
White Riesling	139.8	\$1,253.74	\$175,273
Viognier	136.2	\$1,279.47	\$174,264
Primitivo	88.1	\$1,659.99	\$146,245
Grenache	73.2	\$1,833.46	\$134,209
Other	784.7	\$474.07	\$372,006
TOTAL	36,321.4	\$1,196.24	\$43,449,258

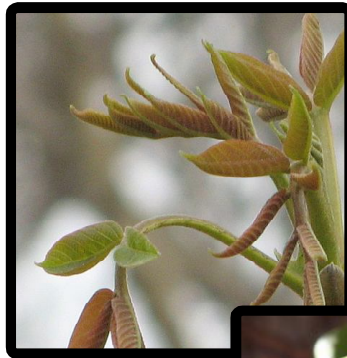


TOP 10 WINE GRAPE VARIETIES





Walnut Catkins



Walnuts Growing in Husks



Walnut Husks Starting to Split Open to Reveal the Walnut Inside



Walnut Husk Opening, Ready To Drop The Walnut



Walnut Free of Husk, Ready For Drying

Seasons of a Walnut Orchard



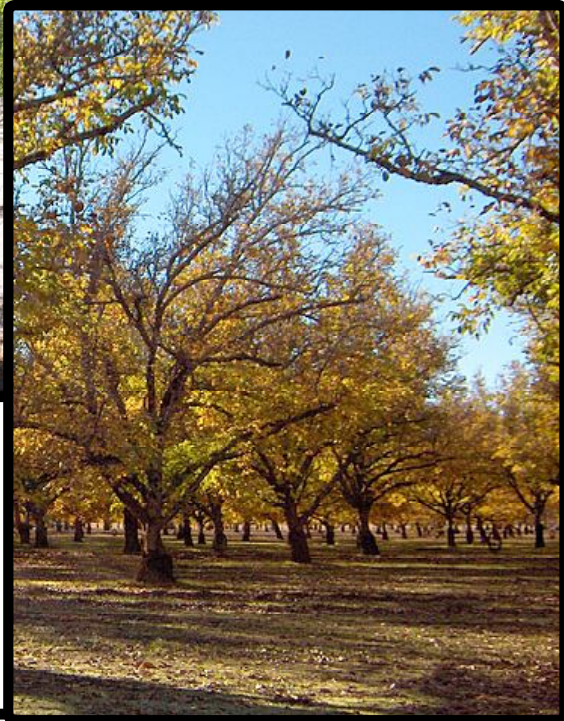
Young Orchard



Spring with Wild Flowers



Summer, Wild Turkeys Enjoying the Shade



Fall Color and Harvest Time



Winter Snow and the Trees are at Rest

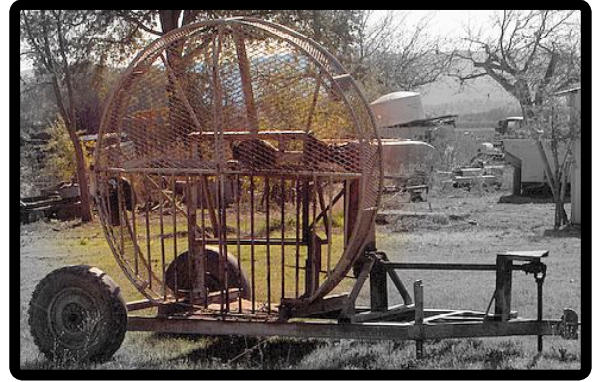


Walnut Pruning in the Winter

Equipment for Harvest



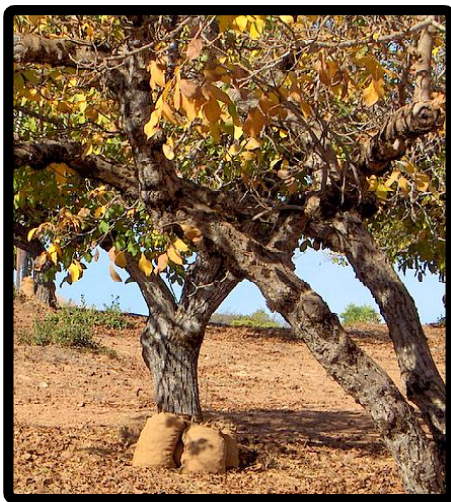
Tree shaker: grabs the tree trunk and shakes at a high frequency to knock the nuts to the ground.



Leaf blower: blows leaves away from the nuts so they can be either hand picked or mechanically picked.



Mechanical picker: picks up the nuts and drops them into a bin



Some nuts are hand picked. They are put into bags then dumped into bins.



Bins are put on trailers then taken to a walnut dryer.

At the Drying Shed



Walnuts are brought into a dryer in burlap bags or bins



Picked nuts being dumped into hopper

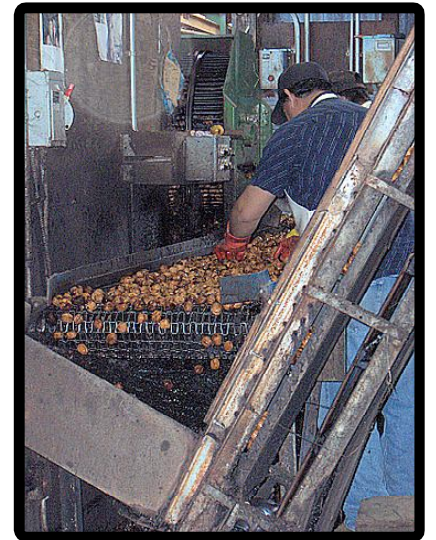
Nuts being cleaned of debris



After debris is removed, nuts are rolled to remove the remaining hulls and any small debris



Sorting cleaned nuts



Nuts going to dryer



Debris and cull nuts hauled away

LAKE COUNTY WALNUT PIE



Lake County Walnut Pie
Beat 3 eggs, add 1/2 cup brown sugar
Melt 1/4 cup butter and add with 1 cup corn syrup
Mix with the egg mixture
Stir in 2 cups walnuts, pieces and halves
Pour into 9 inch pie shell
Bake at 425 degrees for 10 minutes
then lower to 350 til crust is browned, 20-25 mins.



ENJOY !

This page is dedicated to the memory of Lucille Hill
who did so much for the Lake County walnut industry.

Year	Greenhouse Sq. Feet	Field Acres	Value
2007	69,900	77.1	\$5,112,004
2006	75,900	74.6	\$4,318,395

ITEM	YEAR	MBF²	VALUE³
Timber Yield	2007	3,684	\$802,700
	2006	928	\$339,069

¹Values furnished by the California State Board of Equalization
²Quantity of timber cut and scaled (Thousand Board Feet)
³Value of timber immediately before cutting

Commodity	Year	Acreage	Unit	\$ / Unit	Value
Irrigated Pasture	2007	1,800	Acre	\$ 100.00	\$ 180,000.00
	2006	2,000		\$ 120.00	\$ 240,000.00
Range	2007	90,000	Acre	\$ 5.00	\$ 450,000.00
	2006	90,000		\$ 7.00	\$ 630,000.00
Miscellaneous	2007	2,100	Acre		\$ 1,636,375.00
	2006	2,200			\$ 1,250,000.00
Includes Wild rice, oat hay, alfalfa, grass hay					
Total	2007	93,900			\$ 2,266,375.00
	2006	94,200			\$ 2,120,000.00

COMMODITY	YEAR	NO. OF HEAD	TOTAL CWT ¹ (LIVE WT.)	\$ PER CWT	VALUE
CATTLE AND CALVES	2007	3,151	25,206	\$97.85	\$2,466,300
	2006	3,515	28,123	\$80.00	\$2,249,900
MISCELLANEOUS ²	2007				\$46,237
	2006				\$45,946
TOTALS	2007				\$2,512,537
	2006				\$2,296,000

¹CWT = 100 lbs.

²Includes goats, sheep, hogs, and rabbits.



	Year	Value
Miscellaneous ¹	2007	\$ 146,105.00
	2006	\$ 133,701.00

¹ Includes eggs and cheese

Commodity	Year	Acres	Value
Miscellaneous Vegetables ¹	2007	50	\$ 235,500.00
	2006	50	\$ 242,355.00

¹ Includes, beans, peas, tomatoes, squash, pumpkins, etc.



CROPS	NUMBER OF FARMS	ACRES
Walnuts	78	1708
Wine Grapes	7	126
Misc. Fruit	8	37
Misc. Vegetables	8	17
Nursery	2	10
Apples	3	3
Pears	3	33
Total	109	1934





Vine Mealy Bug

	Traps Deployed	Program Hours	
	99	428	

Exotic Insect Pests

	Urban Traps	Program Hours	
	297	1,140.75	

Glassy-Winged Sharpshooter Trapping

	Urban Traps	Nursery Traps	Program Hours
	109	33	1,034

Glassy-Winged Sharpshooter Nursery Shipment Inspections

	Number of Inspections	Program Hours
	100	243



Biological Control

Pest	Agent /Mechanism	Scope of Program
Bull thistle	Gall Fly	2 Sites, Unknown Establishment
Italian Thistle	Seed Head Weevil	Generally Distributed
Klamath Weed	Klamath Weed Beetle	Widely Distributed
Yellow Starthistle	Seed Head Weevil	Widely Distributed
	Gall Fly	2 Sites, Unknown Establishment
	Flower Weevil	1 site
	Hairy Weevil	Becoming Generally Distributed
	Peacock Fly	Generally Distributed
	Yst Rust	4 sites, Unknown Establishment
Red Gum Lerp Psyllid	Wasp (Psyllaephagus bliteus)	1 Site, Well Established
Puncture Vine	Stem Boring Weevil	Generally Distributed

Pest Eradication

The Following Pests were under active control and eradication during the year: Dalmatian Toadflax, Scotch Thistle, Plumless Thistle, Artichoke Thistle, Oblong Spurge, Canada Thistle, Purple Star Thistle, and Hydrilla. (Hydrilla is a CDFA program supported by the Lake County Agriculture Department.)

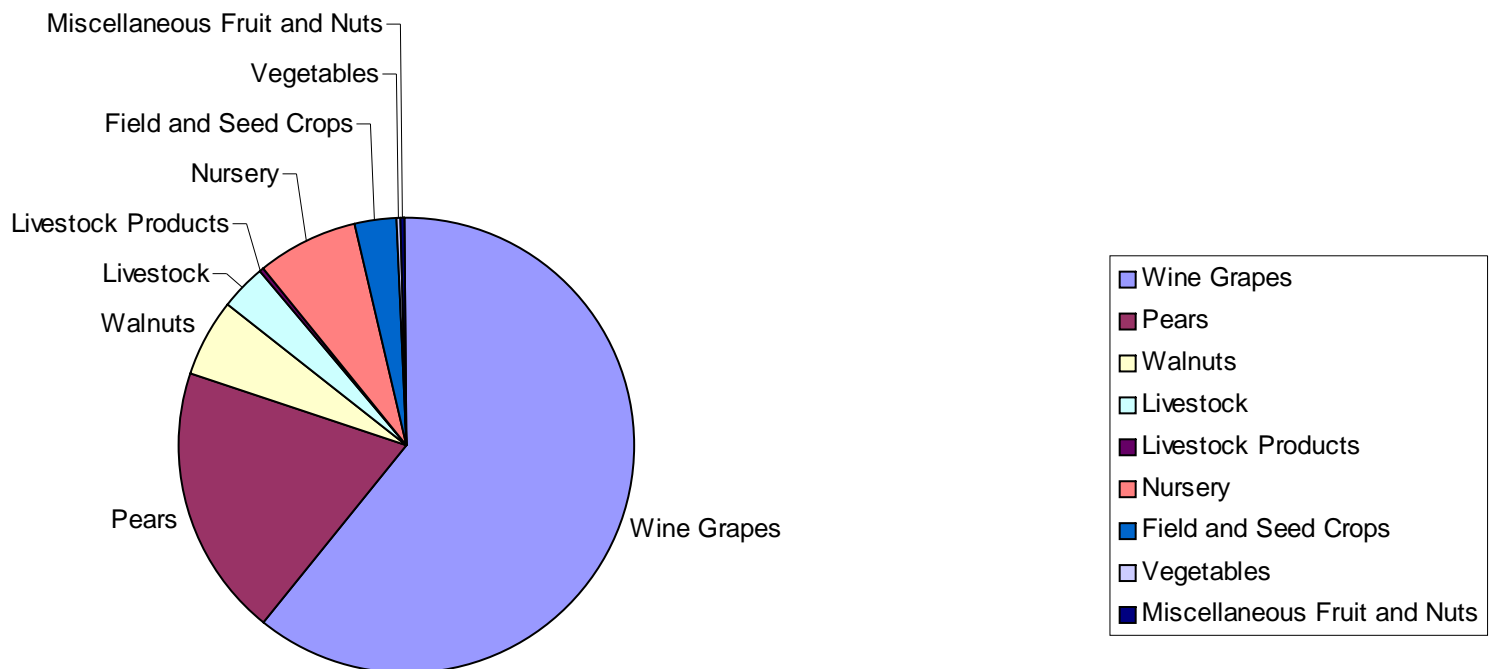
Pest Exclusion

Packages Profiled	2,945	Packages Inspected	468	Packages Rejected	1
-------------------	-------	--------------------	-----	-------------------	---

COMMODITY	YEAR	VALUE
FRUIT AND NUTS ¹	2007	\$ 61,595,000.00
	2006	\$ 59,317,000.00
LIVESTOCK PRODUCTION	2007	\$ 2,512,537.00
	2006	\$ 2,296,000.00
LIVESTOCK & POULTRY PRODUCTS	2007	\$ 146,105.00
	2006	\$ 133,701.00
NURSERY PRODUCTION	2007	\$ 5,112,004.00
	2006	\$ 4,318,395.00
VEGETABLE CROPS	2007	\$ 235,500.00
	2006	\$ 242,355.00
FIELD & SEED CROPS	2007	\$ 2,266,375.00
	2006	\$ 2,120,000.00
FOREST PRODUCTS	2007	\$ 802,700.00
	2006	\$ 339,069.00
GRAND TOTAL	2007	\$ 72,670,221.00
	2006	\$ 68,766,520.00

¹ Includes grapes, pears, walnuts and miscellaneous fruit and nuts

2007 Agricultural Production by Commodity



LAKE COUNTY BOARD OF SUPERVISORS

Ed Robey District 1
Jeff Smith District 2
Denise Rushing District 3
Anthony Farrington District 4
Rob Brown District 5

AGRICULTURAL COMMISSIONER
SEALER OF WEIGHTS & MEASURES

Steve Hajik

DEPUTY AGRICULTURAL COMMISSIONER
DEPUTY SEALER OF WEIGHTS & MEASURES

Chuck Morse

AGRICULTURAL BIOLOGISTS

Andrew Tritchler
Kristine Eutenier
Dana Thibeau

SECRETARY

Kristi Elsemore

FEDERAL WILDLIFE SERVICES STAFF

Greg Wamsley

Larry Johnson

AGRICULTURAL AIDES

Lynn Eutenier
Steve Woods

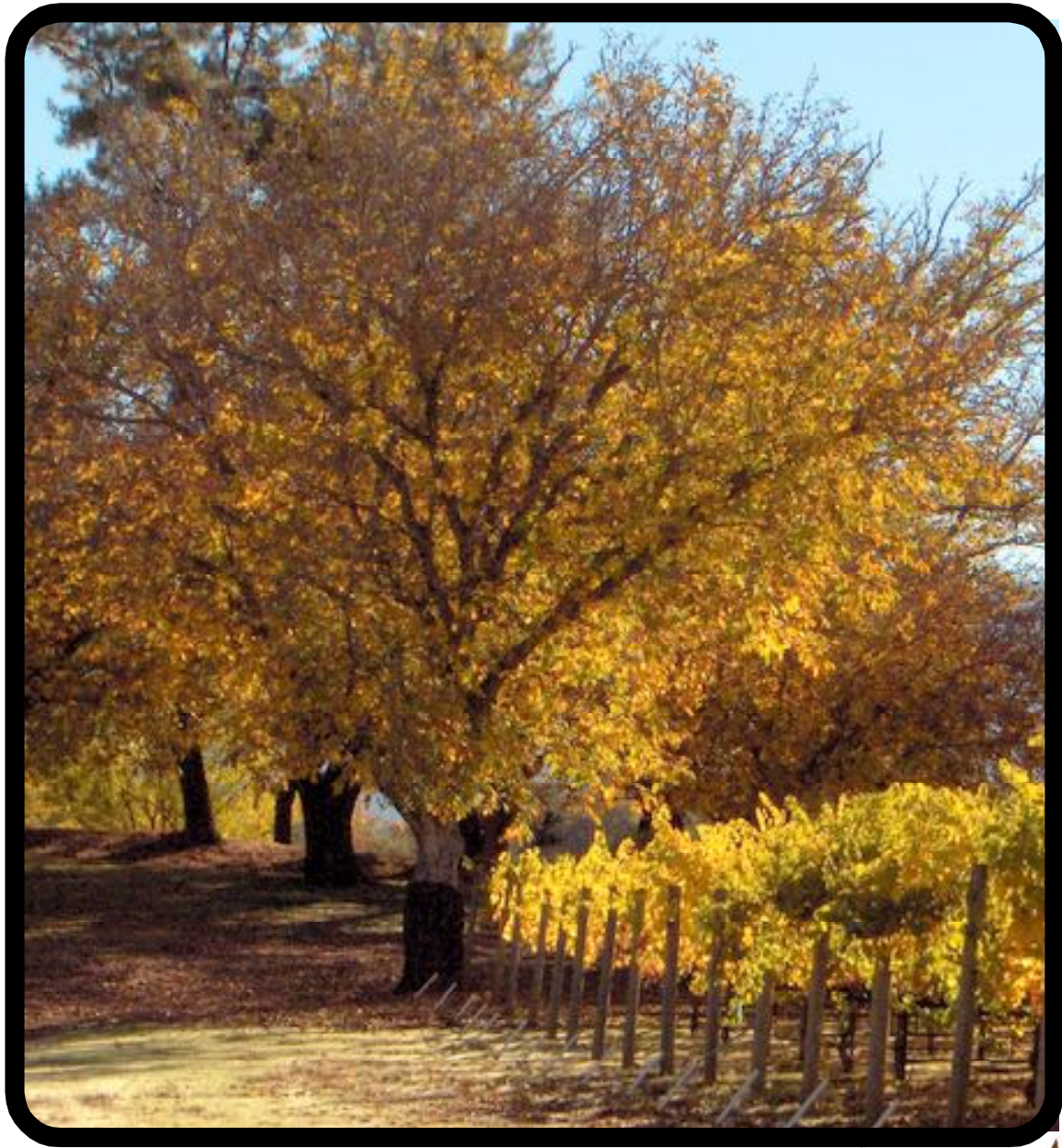


The 2007 Lake County Staff

Left to Right
Dana Thibeau, Andrew Tritchler, Kristi Elsemore, Steve Hajik, Kristine Eutenier, Chuck Morse



COUNTY OF LAKE



LAKE COUNTY

2007

CROP REPORT



letter

COMMODITY	MARKET TYPE	YEAR	PRODUCTION (Tons)	YIELD (Tons/Acre)	RETURNS \$/Ton1	GROSS VALUE1	BEARING ACRES
WINE GRAPES							
Whites		2007	13,980.5	5.6	\$939.29	\$13,131,700.00	2,494
		2006	11,881.8	5.1	\$842.37	\$10,008,900.00	2,447
Reds		2007	22,340.9	4.1	\$1,357.04	\$30,317,600.00	5,455
		2006	20,113.3	3.9	\$1,399.08	\$28,140,200.00	5,395
TOTAL ALL WINE GRAPES		2007	36,321.4	4.6	\$1,196.25	\$43,449,300.00	7,949
		2006	31,995.1	4.3	\$1,192.34	\$38,149,100.00	7,842
PEARS							
Bartlett Including Red	Fresh	2007	17,593.0		\$526.08	\$9,255,000.00	
		2006	16,426.0		\$504.00	\$8,285,000.00	
	Cannery	2007	14,709.0		\$210.81	\$3,101,000.00	
		2006	14,553.0		\$271.00	\$39,647.00	
	Baby Food	2007	1,282.0		\$54.92	\$70,400.00	
		2006	2,160.0		\$37.00	\$80,400.00	
By-products	2007	2,476.0		\$31.16	\$77,200.00		
	2006	2,969.0	3,932.0	\$4,895.00	\$5,858.00		
Total Bartlett		2007	36,060.0	17.4	\$346.76	\$12,504,000.00	2,078
		2006	36,108.0	17.3	\$232.94	\$8,411,000.00	2,092
Winter & Asian (Includes Bosc, Comice, Seckel)	Fresh	2007	716.3		\$1,191.07	\$853,104.62	
		2006	1,154.0		\$678.00	\$782,313.00	
	By-products	2007	314.6		\$17.15	\$5,395.64	
		2006	547.0		\$1.00	\$248.00	
Total Winter & Asian		2007	1,030.9	11.8	\$833.26	\$859,000.00	87
		2006	1,701.0	16.2	\$460.06	\$782,561.00	105
Red Pears other than Bartlett (Starkrimson)	Fresh	2007	488.2		\$1,248.32	\$609,477.43	
		2006	554.0		\$920.00	\$510,221.00	
	By-products	2007	168.0		\$17.41	\$2,925.12	
		2006	271.0		\$34.00	\$9,129.00	
Total Reds		2007	656.3	15.3	\$933.15	\$612,400.00	43
		2006	825.0	19.2	\$629.52	\$519,350.00	43
TOTAL ALL PEARS		2007	37,747.2	17.1	\$370.23	\$13,975,000.00	2,208
		2006	38,635.0	17.2	\$327.00	\$12,617,000.00	2,240
WALNUTS							
Irrigated Walnuts		2007	761.6	0.8	\$2,914.00	\$2,219,300.00	952
		2006	1,047.2	1.1	\$1,754.67	\$1,837,500.00	952
Non-Irrigated Walnuts		2007	622.1	0.4	\$2,914.00	\$1,813,000.00	1,750
		2006	863.6	0.5	\$1,754.67	\$1,515,000.00	1,750
TOTAL ALL WALNUTS		2007	1,383.7	0.5	\$2,914.00	\$4,032,200.00	2,702
		2006	1,910.8	0.7	\$1,754.67	\$3,352,900.00	2,702
MISCELLANEOUS FRUITS & NUTS							
MISCELLANEOUS		2007				\$138,400.00	70
TOTAL ALL PEARS		2007	37,747.2	17.1	\$370.23	\$13,975,000.00	2,208
		2006	38,635.0	17.2	\$327.00	\$12,617,000.00	2,240
WALNUTS							
Irrigated Walnuts		2007	761.6	0.8	\$2,914.00	\$2,219,300.00	952
		2006	1,047.2	1.1	\$1,754.67	\$1,837,500.00	952
Non-Irrigated Walnuts		2007	622.1	0.4	\$2,914.00	\$1,813,000.00	1,750
		2006	863.6	0.5	\$1,754.67	\$1,515,000.00	1,750
TOTAL ALL WALNUTS		2007	1,383.7	0.5	\$2,914.00	\$4,032,200.00	2,702
		2006	1,910.8	0.7	\$1,754.67	\$3,352,900.00	2,702
MISCELLANEOUS FRUITS & NUTS							
MISCELLANEOUS FRUITS & NUTS ²		2007				\$138,400.00	70
		2006				\$142,241.00	86
TOTAL ALL FRUIT & NUT CROPS		2007				\$61,595,000.00	12,929
		2006				\$59,317,000.00	12,781

CROP		BEARING ACRES	NON-BEARING ACRES	TOTAL
PEARS	BARTLETT	2,078	4	2,082
	WINTER & ASIAN	87	0	87
	REDS	43	0	43
	TOTAL	2,208	4	2,212
WINE GRAPES	WHITES	2,494	280	2,774
	REDS	5,455	116	5,571
	TOTAL	7,949	396	8,345
WALNUTS		2,702	150	2,852
MISCELLANEOUS ¹		70		70
TOTAL		12,929	550	13,479

¹Includes apples, peaches, strawberries, melons, dried fruits, olives, etc.

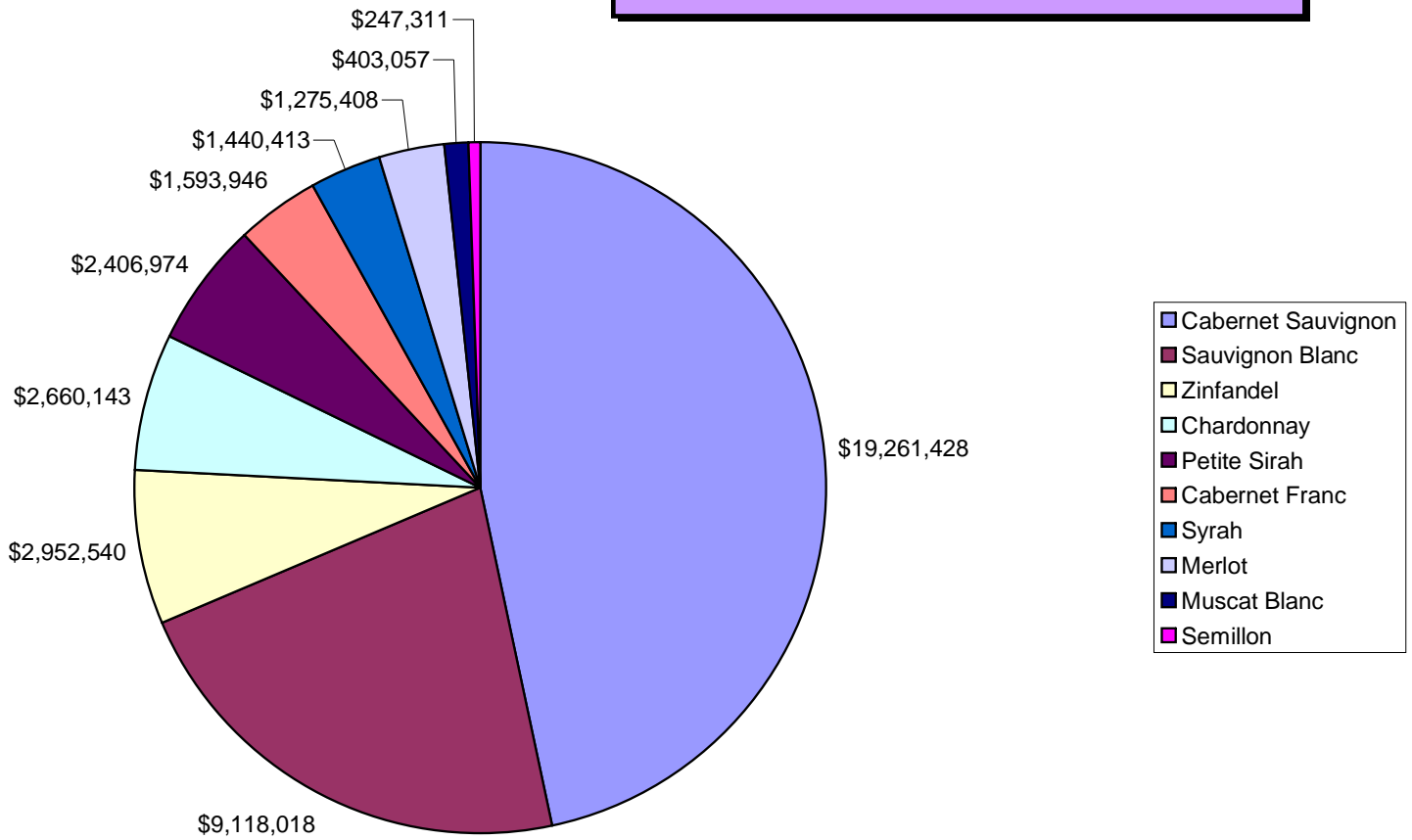


WINE VARIETIES BY VALUE

Variety	Production (Tons)	Returns/Ton	Gross Value
Cabernet Sauvignon	13,750.6	\$1,400.77	\$19,261,428
Sauvignon Blanc	10,314.5	\$884.00	\$9,118,018
Zinfandel	2,455.6	\$1,202.37	\$2,952,540
Chardonnay	1,992.9	\$1,334.81	\$2,660,143
Petite Sirah	1,662.7	\$1,447.63	\$2,406,974
Cabernet Franc	872.1	\$1,827.71	\$1,593,946
Syrah	1,192.0	\$1,208.40	\$1,440,413
Merlot	1,633.4	\$780.83	\$1,275,408
Muscat Blanc	349.6	\$1,152.91	\$403,057
Semillon	263.7	\$937.85	\$247,311
Pinot Noir	86.2	\$2,772.67	\$239,004
Pinot Gris	182.3	\$1,291.18	\$235,382
Petit Verdot	129.0	\$1,640.98	\$211,686
Malbec	120.7	\$1,747.32	\$210,902
Tempranillo	94.1	\$2,030.28	\$191,049
White Riesling	139.8	\$1,253.74	\$175,273
Viognier	136.2	\$1,279.47	\$174,264
Primitivo	88.1	\$1,659.99	\$146,245
Grenache	73.2	\$1,833.46	\$134,209
Other	784.7	\$474.07	\$372,006
TOTAL	36,321.4	\$1,196.24	\$43,449,258

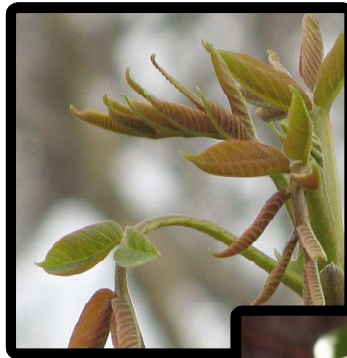


TOP 10 WINE GRAPE VARIETIES





Walnut Catkins



Walnuts Growing in Husks



Walnut Husks Starting to Split Open to Reveal the Walnut Inside



Walnut Husk Opening, Ready To Drop The Walnut



Walnut Free of Husk, Ready For Drying

Seasons of a Walnut Orchard



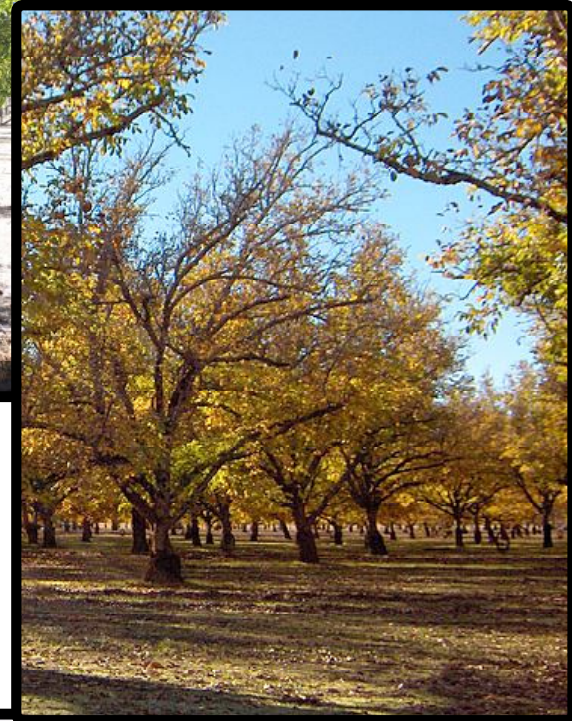
Young Orchard



Spring with Wild Flowers



Summer, Wild Turkeys Enjoying the Shade



Fall Color and Harvest Time



Winter Snow and the Trees are at Rest

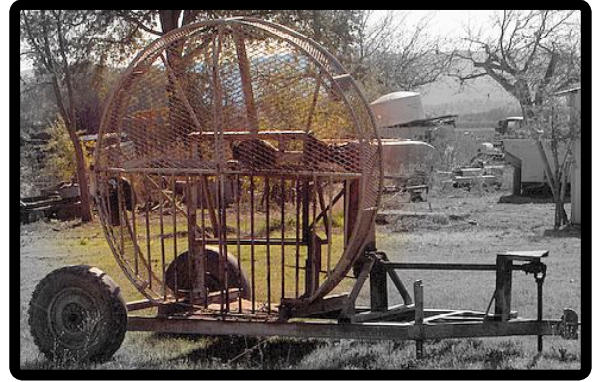


Walnut Pruning in the Winter

Equipment for Harvest



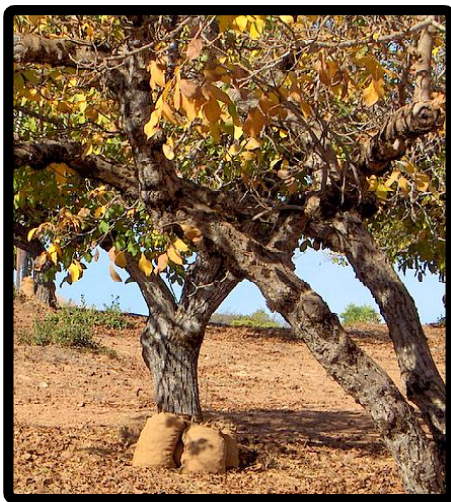
Tree shaker: grabs the tree trunk and shakes at a high frequency to knock the nuts to the ground.



Leaf blower: blows leaves away from the nuts so they can be either hand picked or mechanically picked.



Mechanical picker: picks up the nuts and drops them into a bin



Some nuts are hand picked. They are put into bags then dumped into bins.



Bins are put on trailers then taken to a walnut dryer.

At the Drying Shed



Walnuts are brought into a dryer in burlap bags or bins



Picked nuts being dumped into hopper

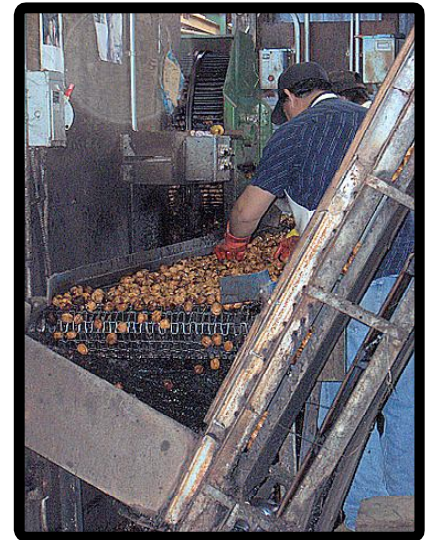
Nuts being cleaned of debris



After debris is removed, nuts are rolled to remove the remaining hulls and any small debris



Sorting cleaned nuts



Nuts going to dryer



Debris and cull nuts hauled away

LAKE COUNTY WALNUT PIE



Lake County Walnut Pie
Beat 3 eggs, add 1/2 cup brown sugar
Melt 1/4 cup butter and add with 1 cup corn syrup
Mix with the egg mixture
Stir in 2 cups walnuts, pieces and halves
Pour into 9 inch pie shell
Bake at 425 degrees for 10 minutes
then lower to 350 til crust is browned, 20-25 mins.



ENJOY !

This page is dedicated to the memory of Lucille Hill
who did so much for the Lake County walnut industry.

Year	Greenhouse Sq. Feet	Field Acres	Value
2007	69,900	77.1	\$5,112,004
2006	75,900	74.6	\$4,318,395

ITEM	YEAR	MBF²	VALUE³
Timber Yield	2007	3,684	\$802,700
	2006	928	\$339,069

¹Values furnished by the California State Board of Equalization
²Quantity of timber cut and scaled (Thousand Board Feet)
³Value of timber immediately before cutting

Commodity	Year	Acreage	Unit	\$ / Unit	Value
Irrigated Pasture	2007	1,800	Acre	\$ 100.00	\$ 180,000.00
	2006	2,000		\$ 120.00	\$ 240,000.00
Range	2007	90,000	Acre	\$ 5.00	\$ 450,000.00
	2006	90,000		\$ 7.00	\$ 630,000.00
Miscellaneous	2007	2,100	Acre		\$ 1,636,375.00
	2006	2,200			\$ 1,250,000.00
Includes Wild rice, oat hay, alfalfa, grass hay					
Total	2007	93,900			\$ 2,266,375.00
	2006	94,200			\$ 2,120,000.00

COMMODITY	YEAR	NO. OF HEAD	TOTAL CWT ¹ (LIVE WT.)	\$ PER CWT	VALUE
CATTLE AND CALVES	2007	3,151	25,206	\$97.85	\$2,466,300
	2006	3,515	28,123	\$80.00	\$2,249,900
MISCELLANEOUS ²	2007				\$46,237
	2006				\$45,946
TOTALS	2007				\$2,512,537
	2006				\$2,296,000

¹CWT = 100 lbs.

²Includes goats, sheep, hogs, and rabbits.



	Year	Value
Miscellaneous ¹	2007	\$ 146,105.00
	2006	\$ 133,701.00

¹ Includes eggs and cheese

Commodity	Year	Acres	Value
Miscellaneous Vegetables ¹	2007	50	\$ 235,500.00
	2006	50	\$ 242,355.00

¹ Includes, beans, peas, tomatoes, squash, pumpkins, etc.



CROPS	NUMBER OF FARMS	ACRES
Walnuts	78	1708
Wine Grapes	7	126
Misc. Fruit	8	37
Misc. Vegetables	8	17
Nursery	2	10
Apples	3	3
Pears	3	33
Total	109	1934



Vine Mealy Bug

		Traps Deployed	Program Hours		
		99	428		

Exotic Insect Pests

		Urban Traps	Program Hours		
		297	1,140.75		

Glassy-Winged Sharpshooter Trapping

	Urban Traps	Nursery Traps	Program Hours		
	109	33	1,034		

Glassy-Winged Sharpshooter Nursery Shipment Inspections

	Number of Inspections		Program Hours		
	100		243		

Biological Control

Pest	Agent /Mechanism	Scope of Program
Bull thistle	Gall Fly	2 Sites, Unknown Establishment
Italian Thistle	Seed Head Weevil	Generally Distributed
Klamath Weed	Klamath Weed Beetle	Widely Distributed
Yellow Starthistle	Seed Head Weevil	Widely Distributed
	Gall Fly	2 Sites, Unknown Establishment
	Flower Weevil	1 site
	Hairy Weevil	Becoming Generally Distributed
	Peacock Fly	Generally Distributed
	Yst Rust	4 sites, Unknown Establishment
Red Gum Lerp Psyllid	Wasp (<i>Psyllaephagus bliteus</i>)	1 Site, Well Established
Puncture Vine	Stem Boring Weevil	Generally Distributed

Pest Eradication

The Following Pests were under active control and eradication during the year: Dalmatian Toadflax, Scotch Thistle, Plumless Thistle, Artichoke Thistle, Oblong Spurge, Canada Thistle, Purple Star Thistle, and Hydrilla. (Hydrilla is a CDFA program supported by the Lake County Agriculture Department.)

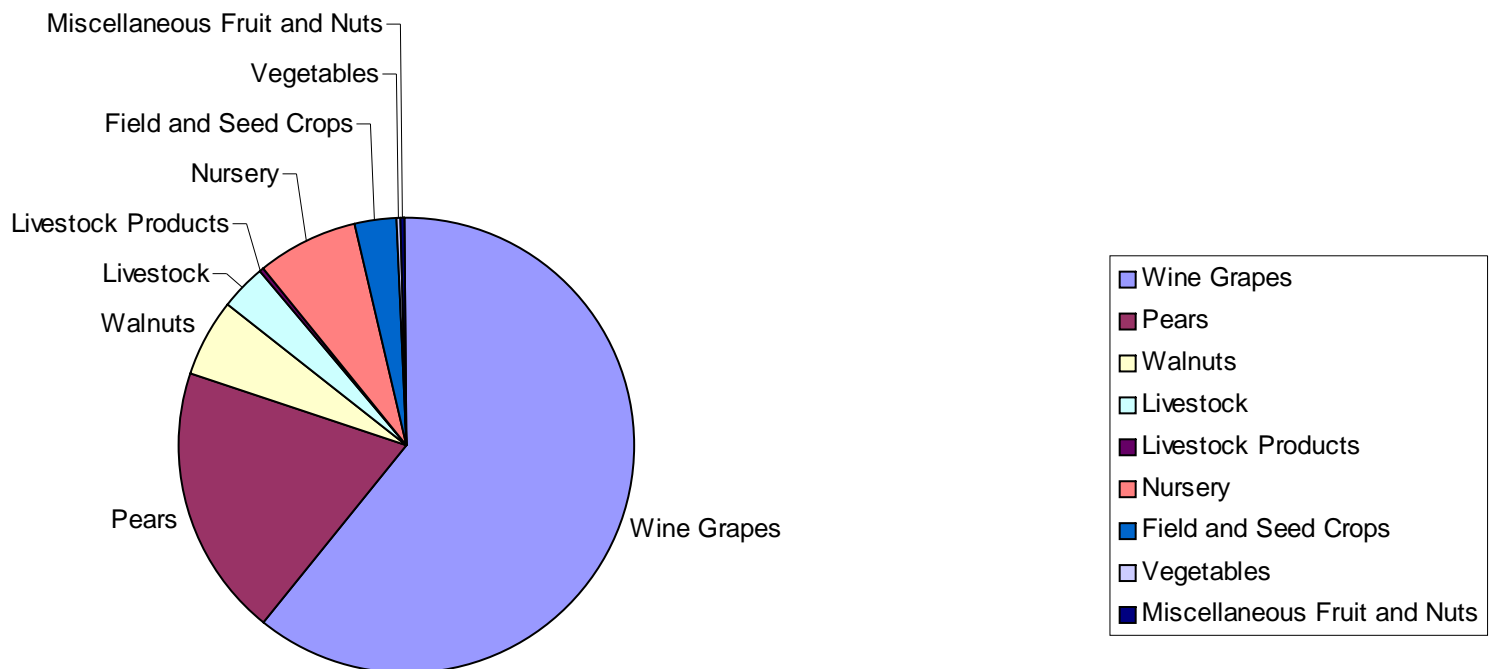
Pest Exclusion

Packages Profiled		Packages Inspected	Packages Rejected
2,945		468	1

COMMODITY	YEAR	VALUE
FRUIT AND NUTS ¹	2007	\$ 61,595,000.00
	2006	\$ 59,317,000.00
LIVESTOCK PRODUCTION	2007	\$ 2,512,537.00
	2006	\$ 2,296,000.00
LIVESTOCK & POULTRY PRODUCTS	2007	\$ 146,105.00
	2006	\$ 133,701.00
NURSERY PRODUCTION	2007	\$ 5,112,004.00
	2006	\$ 4,318,395.00
VEGETABLE CROPS	2007	\$ 235,500.00
	2006	\$ 242,355.00
FIELD & SEED CROPS	2007	\$ 2,266,375.00
	2006	\$ 2,120,000.00
FOREST PRODUCTS	2007	\$ 802,700.00
	2006	\$ 339,069.00
GRAND TOTAL	2007	\$ 72,670,221.00
	2006	\$ 68,766,520.00

¹ Includes grapes, pears, walnuts and miscellaneous fruit and nuts

2007 Agricultural Production by Commodity



LAKE COUNTY BOARD OF SUPERVISORS

Ed Robey District 1
Jeff Smith District 2
Denise Rushing District 3
Anthony Farrington District 4
Rob Brown District 5

AGRICULTURAL COMMISSIONER
SEALER OF WEIGHTS & MEASURES

Steve Hajik

DEPUTY AGRICULTURAL COMMISSIONER
DEPUTY SEALER OF WEIGHTS & MEASURES

Chuck Morse

AGRICULTURAL BIOLOGISTS

Andrew Tritchler
Kristine Eutenier
Dana Thibeau

SECRETARY

Kristi Elsemore

FEDERAL WILDLIFE SERVICES STAFF

Greg Wamsley

Larry Johnson

AGRICULTURAL AIDES

Lynn Eutenier
Steve Woods

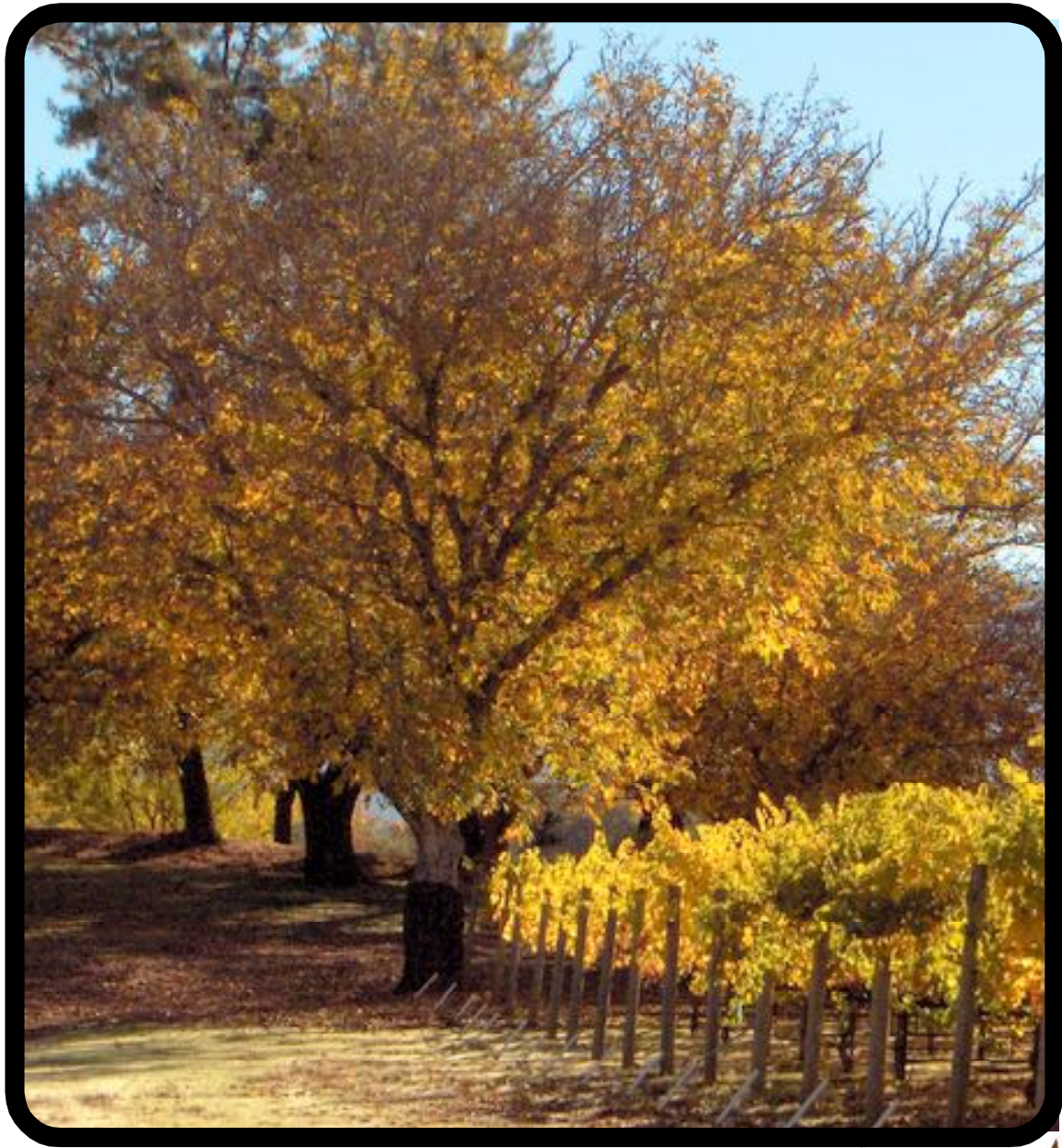


The 2007 Lake County Staff

Left to Right
Dana Thibeau, Andrew Tritchler, Kristi Elsemore, Steve Hajik, Kristine Eutenier, Chuck Morse



COUNTY OF LAKE



LAKE COUNTY

2007

CROP REPORT



letter

COMMODITY	MARKET TYPE	YEAR	PRODUCTION (Tons)	YIELD (Tons/Acre)	RETURNS \$/Ton1	GROSS VALUE1	BEARING ACRES
WINE GRAPES							
Whites		2007	13,980.5	5.6	\$939.29	\$13,131,700.00	2,494
		2006	11,881.8	5.1	\$842.37	\$10,008,900.00	2,447
Reds		2007	22,340.9	4.1	\$1,357.04	\$30,317,600.00	5,455
		2006	20,113.3	3.9	\$1,399.08	\$28,140,200.00	5,395
TOTAL ALL WINE GRAPES		2007	36,321.4	4.6	\$1,196.25	\$43,449,300.00	7,949
		2006	31,995.1	4.3	\$1,192.34	\$38,149,100.00	7,842
PEARS							
Bartlett Including Red	Fresh	2007	17,593.0		\$526.08	\$9,255,000.00	
		2006	16,426.0		\$504.00	\$8,285,000.00	
	Cannery	2007	14,709.0		\$210.81	\$3,101,000.00	
		2006	14,553.0		\$271.00	\$39,647.00	
	Baby Food	2007	1,282.0		\$54.92	\$70,400.00	
		2006	2,160.0		\$37.00	\$80,400.00	
By-products	2007	2,476.0		\$31.16	\$77,200.00		
	2006	2,969.0	3,932.0	\$4,895.00	\$5,858.00		
Total Bartlett		2007	36,060.0	17.4	\$346.76	\$12,504,000.00	2,078
		2006	36,108.0	17.3	\$232.94	\$8,411,000.00	2,092
Winter & Asian (Includes Bosc, Comice, Seckel)	Fresh	2007	716.3		\$1,191.07	\$853,104.62	
		2006	1,154.0		\$678.00	\$782,313.00	
	By-products	2007	314.6		\$17.15	\$5,395.64	
		2006	547.0		\$1.00	\$248.00	
Total Winter & Asian		2007	1,030.9	11.8	\$833.26	\$859,000.00	87
		2006	1,701.0	16.2	\$460.06	\$782,561.00	105
Red Pears other than Bartlett (Starkrimson)	Fresh	2007	488.2		\$1,248.32	\$609,477.43	
		2006	554.0		\$920.00	\$510,221.00	
	By-products	2007	168.0		\$17.41	\$2,925.12	
		2006	271.0		\$34.00	\$9,129.00	
Total Reds		2007	656.3	15.3	\$933.15	\$612,400.00	43
		2006	825.0	19.2	\$629.52	\$519,350.00	43
TOTAL ALL PEARS		2007	37,747.2	17.1	\$370.23	\$13,975,000.00	2,208
		2006	38,635.0	17.2	\$327.00	\$12,617,000.00	2,240
WALNUTS							
Irrigated Walnuts		2007	761.6	0.8	\$2,914.00	\$2,219,300.00	952
		2006	1,047.2	1.1	\$1,754.67	\$1,837,500.00	952
Non-Irrigated Walnuts		2007	622.1	0.4	\$2,914.00	\$1,813,000.00	1,750
		2006	863.6	0.5	\$1,754.67	\$1,515,000.00	1,750
TOTAL ALL WALNUTS		2007	1,383.7	0.5	\$2,914.00	\$4,032,200.00	2,702
		2006	1,910.8	0.7	\$1,754.67	\$3,352,900.00	2,702
MISCELLANEOUS FRUITS & NUTS							
MISCELLANEOUS		2007				\$138,400.00	70
TOTAL ALL PEARS		2007	37,747.2	17.1	\$370.23	\$13,975,000.00	2,208
		2006	38,635.0	17.2	\$327.00	\$12,617,000.00	2,240
WALNUTS							
Irrigated Walnuts		2007	761.6	0.8	\$2,914.00	\$2,219,300.00	952
		2006	1,047.2	1.1	\$1,754.67	\$1,837,500.00	952
Non-Irrigated Walnuts		2007	622.1	0.4	\$2,914.00	\$1,813,000.00	1,750
		2006	863.6	0.5	\$1,754.67	\$1,515,000.00	1,750
TOTAL ALL WALNUTS		2007	1,383.7	0.5	\$2,914.00	\$4,032,200.00	2,702
		2006	1,910.8	0.7	\$1,754.67	\$3,352,900.00	2,702
MISCELLANEOUS FRUITS & NUTS							
MISCELLANEOUS FRUITS & NUTS ²		2007				\$138,400.00	70
		2006				\$142,241.00	86
TOTAL ALL FRUIT & NUT CROPS		2007				\$61,595,000.00	12,929
		2006				\$59,317,000.00	12,781

CROP		BEARING ACRES	NON-BEARING ACRES	TOTAL
PEARS	BARTLETT	2,078	4	2,082
	WINTER & ASIAN	87	0	87
	REDS	43	0	43
	TOTAL	2,208	4	2,212
WINE GRAPES	WHITES	2,494	280	2,774
	REDS	5,455	116	5,571
	TOTAL	7,949	396	8,345
WALNUTS		2,702	150	2,852
MISCELLANEOUS ¹		70		70
TOTAL		12,929	550	13,479

¹Includes apples, peaches, strawberries, melons, dried fruits, olives, etc.

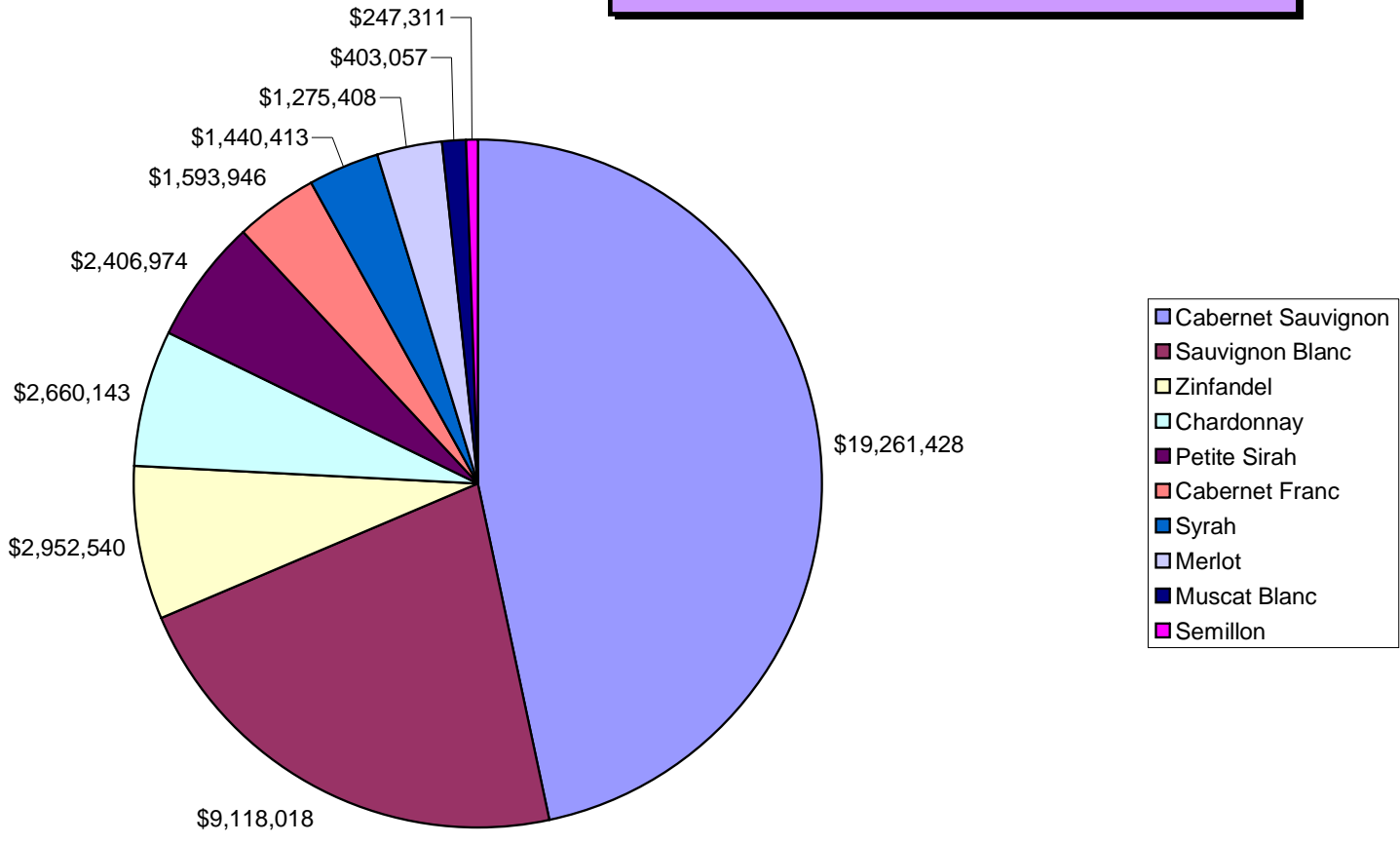


WINE VARIETIES BY VALUE

Variety	Production (Tons)	Returns/Ton	Gross Value
Cabernet Sauvignon	13,750.6	\$1,400.77	\$19,261,428
Sauvignon Blanc	10,314.5	\$884.00	\$9,118,018
Zinfandel	2,455.6	\$1,202.37	\$2,952,540
Chardonnay	1,992.9	\$1,334.81	\$2,660,143
Petite Sirah	1,662.7	\$1,447.63	\$2,406,974
Cabernet Franc	872.1	\$1,827.71	\$1,593,946
Syrah	1,192.0	\$1,208.40	\$1,440,413
Merlot	1,633.4	\$780.83	\$1,275,408
Muscat Blanc	349.6	\$1,152.91	\$403,057
Semillon	263.7	\$937.85	\$247,311
Pinot Noir	86.2	\$2,772.67	\$239,004
Pinot Gris	182.3	\$1,291.18	\$235,382
Petit Verdot	129.0	\$1,640.98	\$211,686
Malbec	120.7	\$1,747.32	\$210,902
Tempranillo	94.1	\$2,030.28	\$191,049
White Riesling	139.8	\$1,253.74	\$175,273
Viognier	136.2	\$1,279.47	\$174,264
Primitivo	88.1	\$1,659.99	\$146,245
Grenache	73.2	\$1,833.46	\$134,209
Other	784.7	\$474.07	\$372,006
TOTAL	36,321.4	\$1,196.24	\$43,449,258

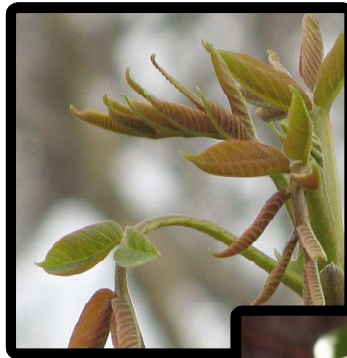


TOP 10 WINE GRAPE VARIETIES





Walnut Catkins



Walnuts Growing in Husks



Walnut Husks Starting to Split Open to Reveal the Walnut Inside



Walnut Husk Opening, Ready To Drop The Walnut



Walnut Free of Husk, Ready For Drying

Seasons of a Walnut Orchard



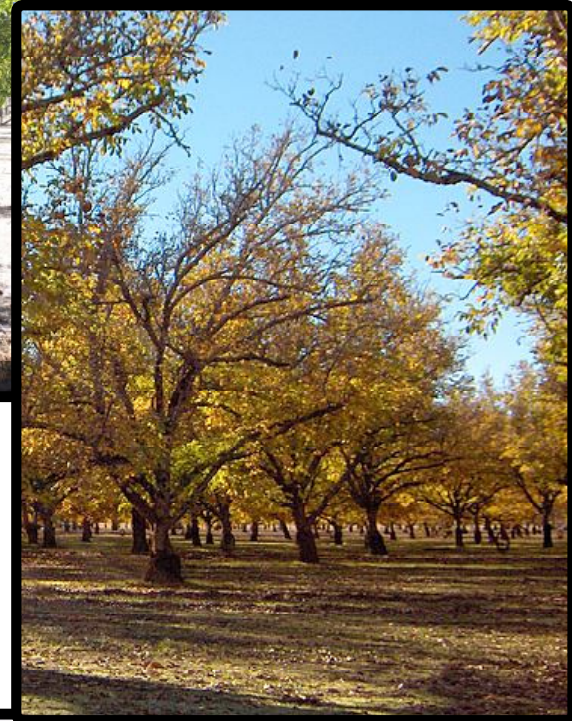
Young Orchard



Spring with Wild Flowers



Summer, Wild Turkeys Enjoying the Shade



Fall Color and Harvest Time



Winter Snow and the Trees are at Rest

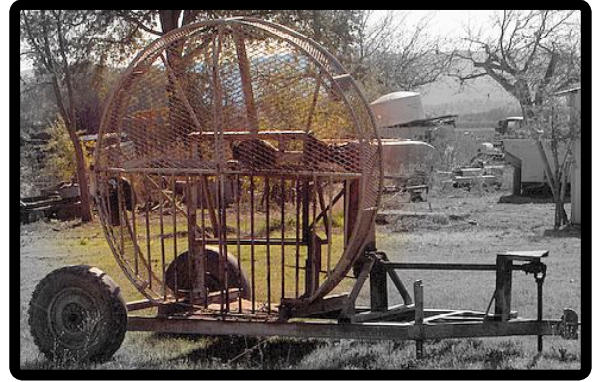


Walnut Pruning in the Winter

Equipment for Harvest



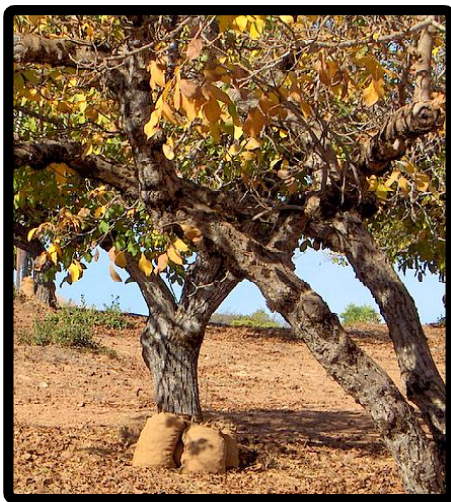
Tree shaker: grabs the tree trunk and shakes at a high frequency to knock the nuts to the ground.



Leaf blower: blows leaves away from the nuts so they can be either hand picked or mechanically picked.



Mechanical picker: picks up the nuts and drops them into a bin



Some nuts are hand picked. They are put into bags then dumped into bins.



Bins are put on trailers then taken to a walnut dryer.

At the Drying Shed



Walnuts are brought into a dryer in burlap bags or bins



Picked nuts being dumped into hopper

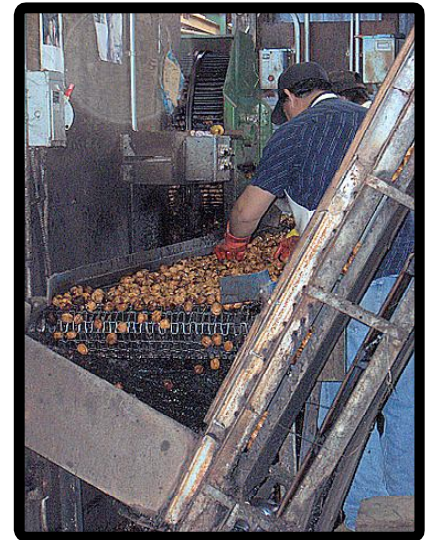
Nuts being cleaned of debris



After debris is removed, nuts are rolled to remove the remaining hulls and any small debris



Sorting cleaned nuts



Nuts going to dryer



Debris and cull nuts hauled away

LAKE COUNTY WALNUT PIE



Lake County Walnut Pie
Beat 3 eggs, add 1/2 cup brown sugar
Melt 1/4 cup butter and add with 1 cup corn syrup
Mix with the egg mixture
Stir in 2 cups walnuts, pieces and halves
Pour into 9 inch pie shell
Bake at 425 degrees for 10 minutes
then lower to 350 til crust is browned, 20-25 mins.



ENJOY !

This page is dedicated to the memory of Lucille Hill
who did so much for the Lake County walnut industry.

Year	Greenhouse Sq. Feet	Field Acres	Value
2007	69,900	77.1	\$5,112,004
2006	75,900	74.6	\$4,318,395

ITEM	YEAR	MBF²	VALUE³
Timber Yield	2007	3,684	\$802,700
	2006	928	\$339,069

¹Values furnished by the California State Board of Equalization
²Quantity of timber cut and scaled (Thousand Board Feet)
³Value of timber immediately before cutting

Commodity	Year	Acreage	Unit	\$ / Unit	Value
Irrigated Pasture	2007	1,800	Acre	\$ 100.00	\$ 180,000.00
	2006	2,000		\$ 120.00	\$ 240,000.00
Range	2007	90,000	Acre	\$ 5.00	\$ 450,000.00
	2006	90,000		\$ 7.00	\$ 630,000.00
Miscellaneous	2007	2,100	Acre		\$ 1,636,375.00
	2006	2,200			\$ 1,250,000.00
Includes Wild rice, oat hay, alfalfa, grass hay					
Total	2007	93,900			\$ 2,266,375.00
	2006	94,200			\$ 2,120,000.00

COMMODITY	YEAR	NO. OF HEAD	TOTAL CWT ¹ (LIVE WT.)	\$ PER CWT	VALUE
CATTLE AND CALVES	2007	3,151	25,206	\$97.85	\$2,466,300
	2006	3,515	28,123	\$80.00	\$2,249,900
MISCELLANEOUS ²	2007				\$46,237
	2006				\$45,946
TOTALS	2007				\$2,512,537
	2006				\$2,296,000

¹CWT = 100 lbs.

²Includes goats, sheep, hogs, and rabbits.



	Year	Value
Miscellaneous ¹	2007	\$ 146,105.00
	2006	\$ 133,701.00

¹ Includes eggs and cheese

Commodity	Year	Acres	Value
Miscellaneous Vegetables ¹	2007	50	\$ 235,500.00
	2006	50	\$ 242,355.00

¹ Includes, beans, peas, tomatoes, squash, pumpkins, etc.



CROPS	NUMBER OF FARMS	ACRES
Walnuts	78	1708
Wine Grapes	7	126
Misc. Fruit	8	37
Misc. Vegetables	8	17
Nursery	2	10
Apples	3	3
Pears	3	33
Total	109	1934



Vine Mealy Bug

	Traps Deployed	Program Hours		
	99	428		

Exotic Insect Pests

	Urban Traps	Program Hours		
	297	1,140.75		

Glassy-Winged Sharpshooter Trapping

	Urban Traps	Nursery Traps	Program Hours	
	109	33	1,034	

Glassy-Winged Sharpshooter Nursery Shipment Inspections

	Number of Inspections	Program Hours		
	100	243		

Biological Control

Pest	Agent /Mechanism	Scope of Program
Bull thistle	Gall Fly	2 Sites, Unknown Establishment
Italian Thistle	Seed Head Weevil	Generally Distributed
Klamath Weed	Klamath Weed Beetle	Widely Distributed
Yellow Starthistle	Seed Head Weevil	Widely Distributed
	Gall Fly	2 Sites, Unknown Establishment
	Flower Weevil	1 site
	Hairy Weevil	Becoming Generally Distributed
	Peacock Fly	Generally Distributed
	Yst Rust	4 sites, Unknown Establishment
Red Gum Lerp Psyllid	Wasp (<i>Psyllaephagus bliteus</i>)	1 Site, Well Established
Puncture Vine	Stem Boring Weevil	Generally Distributed

Pest Eradication

The Following Pests were under active control and eradication during the year: Dalmatian Toadflax, Scotch Thistle, Plumless Thistle, Artichoke Thistle, Oblong Spurge, Canada Thistle, Purple Star Thistle, and Hydrilla. (Hydrilla is a CDFA program supported by the Lake County Agriculture Department.)

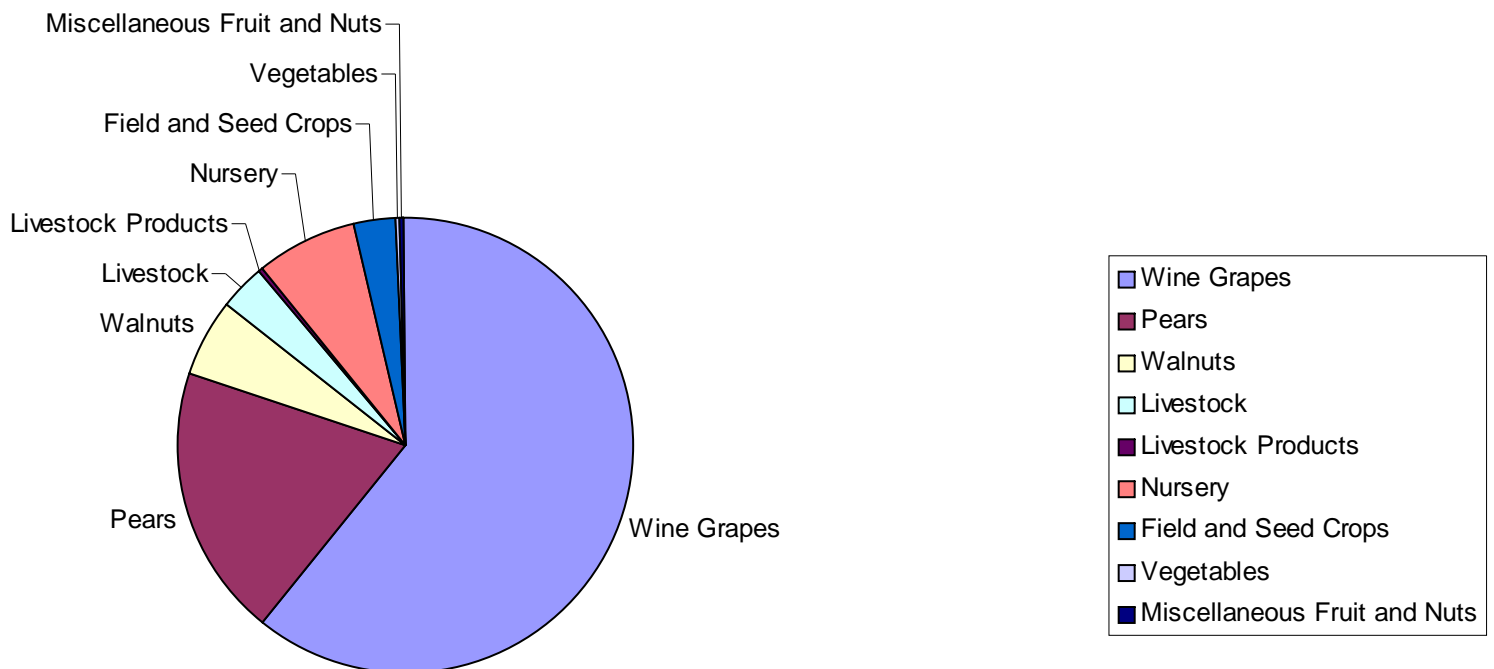
Pest Exclusion

Packages Profiled	2,945	Packages Inspected	468	Packages Rejected	1
-------------------	-------	--------------------	-----	-------------------	---

COMMODITY	YEAR	VALUE
FRUIT AND NUTS ¹	2007	\$ 61,595,000.00
	2006	\$ 59,317,000.00
LIVESTOCK PRODUCTION	2007	\$ 2,512,537.00
	2006	\$ 2,296,000.00
LIVESTOCK & POULTRY PRODUCTS	2007	\$ 146,105.00
	2006	\$ 133,701.00
NURSERY PRODUCTION	2007	\$ 5,112,004.00
	2006	\$ 4,318,395.00
VEGETABLE CROPS	2007	\$ 235,500.00
	2006	\$ 242,355.00
FIELD & SEED CROPS	2007	\$ 2,266,375.00
	2006	\$ 2,120,000.00
FOREST PRODUCTS	2007	\$ 802,700.00
	2006	\$ 339,069.00
GRAND TOTAL	2007	\$ 72,670,221.00
	2006	\$ 68,766,520.00

¹ Includes grapes, pears, walnuts and miscellaneous fruit and nuts

2007 Agricultural Production by Commodity



LAKE COUNTY BOARD OF SUPERVISORS

Ed Robey District 1
Jeff Smith District 2
Denise Rushing District 3
Anthony Farrington District 4
Rob Brown District 5

AGRICULTURAL COMMISSIONER
SEALER OF WEIGHTS & MEASURES

Steve Hajik

DEPUTY AGRICULTURAL COMMISSIONER
DEPUTY SEALER OF WEIGHTS & MEASURES

Chuck Morse

AGRICULTURAL BIOLOGISTS

Andrew Tritchler
Kristine Eutenier
Dana Thibeau

SECRETARY

Kristi Elsemore

FEDERAL WILDLIFE SERVICES STAFF

Greg Wamsley

Larry Johnson

AGRICULTURAL AIDES

Lynn Eutenier
Steve Woods

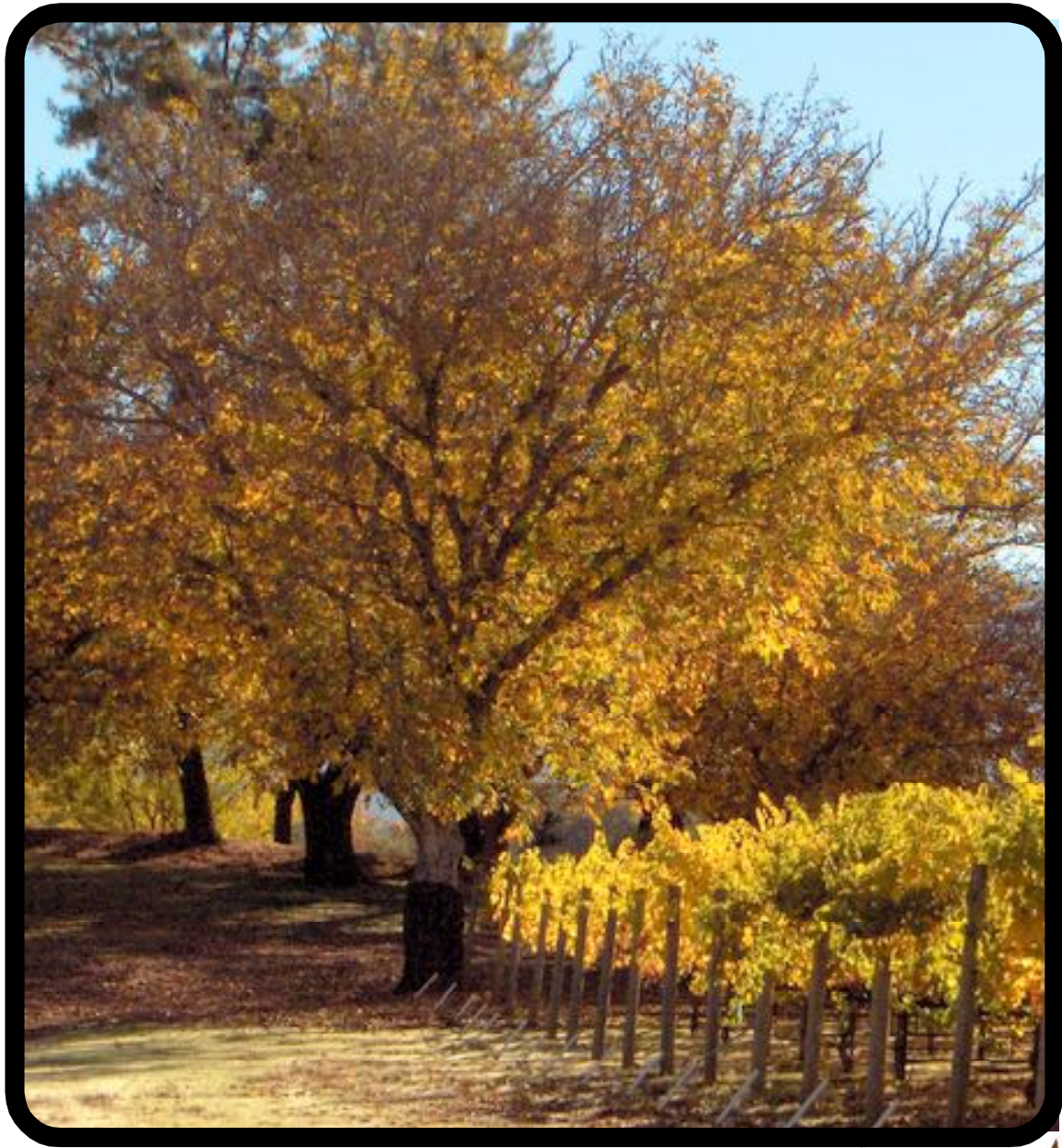


The 2007 Lake County Staff

Left to Right
Dana Thibeau, Andrew Tritchler, Kristi Elsemore, Steve Hajik, Kristine Eutenier, Chuck Morse



COUNTY OF LAKE



LAKE COUNTY

2007

CROP REPORT



letter

COMMODITY	MARKET TYPE	YEAR	PRODUCTION (Tons)	YIELD (Tons/Acre)	RETURNS \$/Ton1	GROSS VALUE1	BEARING ACRES
WINE GRAPES							
Whites		2007	13,980.5	5.6	\$939.29	\$13,131,700.00	2,494
		2006	11,881.8	5.1	\$842.37	\$10,008,900.00	2,447
Reds		2007	22,340.9	4.1	\$1,357.04	\$30,317,600.00	5,455
		2006	20,113.3	3.9	\$1,399.08	\$28,140,200.00	5,395
TOTAL ALL WINE GRAPES		2007	36,321.4	4.6	\$1,196.25	\$43,449,300.00	7,949
		2006	31,995.1	4.3	\$1,192.34	\$38,149,100.00	7,842
PEARS							
Bartlett Including Red	Fresh	2007	17,593.0		\$526.08	\$9,255,000.00	
		2006	16,426.0		\$504.00	\$8,285,000.00	
	Cannery	2007	14,709.0		\$210.81	\$3,101,000.00	
		2006	14,553.0		\$271.00	\$39,647.00	
	Baby Food	2007	1,282.0		\$54.92	\$70,400.00	
		2006	2,160.0		\$37.00	\$80,400.00	
By-products	2007	2,476.0		\$31.16	\$77,200.00		
	2006	2,969.0	3,932.0	\$4,895.00	\$5,858.00		
Total Bartlett		2007	36,060.0	17.4	\$346.76	\$12,504,000.00	2,078
		2006	36,108.0	17.3	\$232.94	\$8,411,000.00	2,092
Winter & Asian (Includes Bosc, Comice, Seckel)	Fresh	2007	716.3		\$1,191.07	\$853,104.62	
		2006	1,154.0		\$678.00	\$782,313.00	
	By-products	2007	314.6		\$17.15	\$5,395.64	
		2006	547.0		\$1.00	\$248.00	
Total Winter & Asian		2007	1,030.9	11.8	\$833.26	\$859,000.00	87
		2006	1,701.0	16.2	\$460.06	\$782,561.00	105
Red Pears other than Bartlett (Starkrimson)	Fresh	2007	488.2		\$1,248.32	\$609,477.43	
		2006	554.0		\$920.00	\$510,221.00	
	By-products	2007	168.0		\$17.41	\$2,925.12	
		2006	271.0		\$34.00	\$9,129.00	
Total Reds		2007	656.3	15.3	\$933.15	\$612,400.00	43
		2006	825.0	19.2	\$629.52	\$519,350.00	43
TOTAL ALL PEARS		2007	37,747.2	17.1	\$370.23	\$13,975,000.00	2,208
		2006	38,635.0	17.2	\$327.00	\$12,617,000.00	2,240
WALNUTS							
Irrigated Walnuts		2007	761.6	0.8	\$2,914.00	\$2,219,300.00	952
		2006	1,047.2	1.1	\$1,754.67	\$1,837,500.00	952
Non-Irrigated Walnuts		2007	622.1	0.4	\$2,914.00	\$1,813,000.00	1,750
		2006	863.6	0.5	\$1,754.67	\$1,515,000.00	1,750
TOTAL ALL WALNUTS		2007	1,383.7	0.5	\$2,914.00	\$4,032,200.00	2,702
		2006	1,910.8	0.7	\$1,754.67	\$3,352,900.00	2,702
MISCELLANEOUS FRUITS & NUTS							
MISCELLANEOUS		2007				\$138,400.00	70
TOTAL ALL PEARS		2007	37,747.2	17.1	\$370.23	\$13,975,000.00	2,208
		2006	38,635.0	17.2	\$327.00	\$12,617,000.00	2,240
WALNUTS							
Irrigated Walnuts		2007	761.6	0.8	\$2,914.00	\$2,219,300.00	952
		2006	1,047.2	1.1	\$1,754.67	\$1,837,500.00	952
Non-Irrigated Walnuts		2007	622.1	0.4	\$2,914.00	\$1,813,000.00	1,750
		2006	863.6	0.5	\$1,754.67	\$1,515,000.00	1,750
TOTAL ALL WALNUTS		2007	1,383.7	0.5	\$2,914.00	\$4,032,200.00	2,702
		2006	1,910.8	0.7	\$1,754.67	\$3,352,900.00	2,702
MISCELLANEOUS FRUITS & NUTS							
MISCELLANEOUS FRUITS & NUTS ²		2007				\$138,400.00	70
		2006				\$142,241.00	86
TOTAL ALL FRUIT & NUT CROPS		2007				\$61,595,000.00	12,929
		2006				\$59,317,000.00	12,781

CROP		BEARING ACRES	NON-BEARING ACRES	TOTAL
PEARS	BARTLETT	2,078	4	2,082
	WINTER & ASIAN	87	0	87
	REDS	43	0	43
	TOTAL	2,208	4	2,212
WINE GRAPES	WHITES	2,494	280	2,774
	REDS	5,455	116	5,571
	TOTAL	7,949	396	8,345
WALNUTS		2,702	150	2,852
MISCELLANEOUS ¹		70		70
TOTAL		12,929	550	13,479

¹Includes apples, peaches, strawberries, melons, dried fruits, olives, etc.

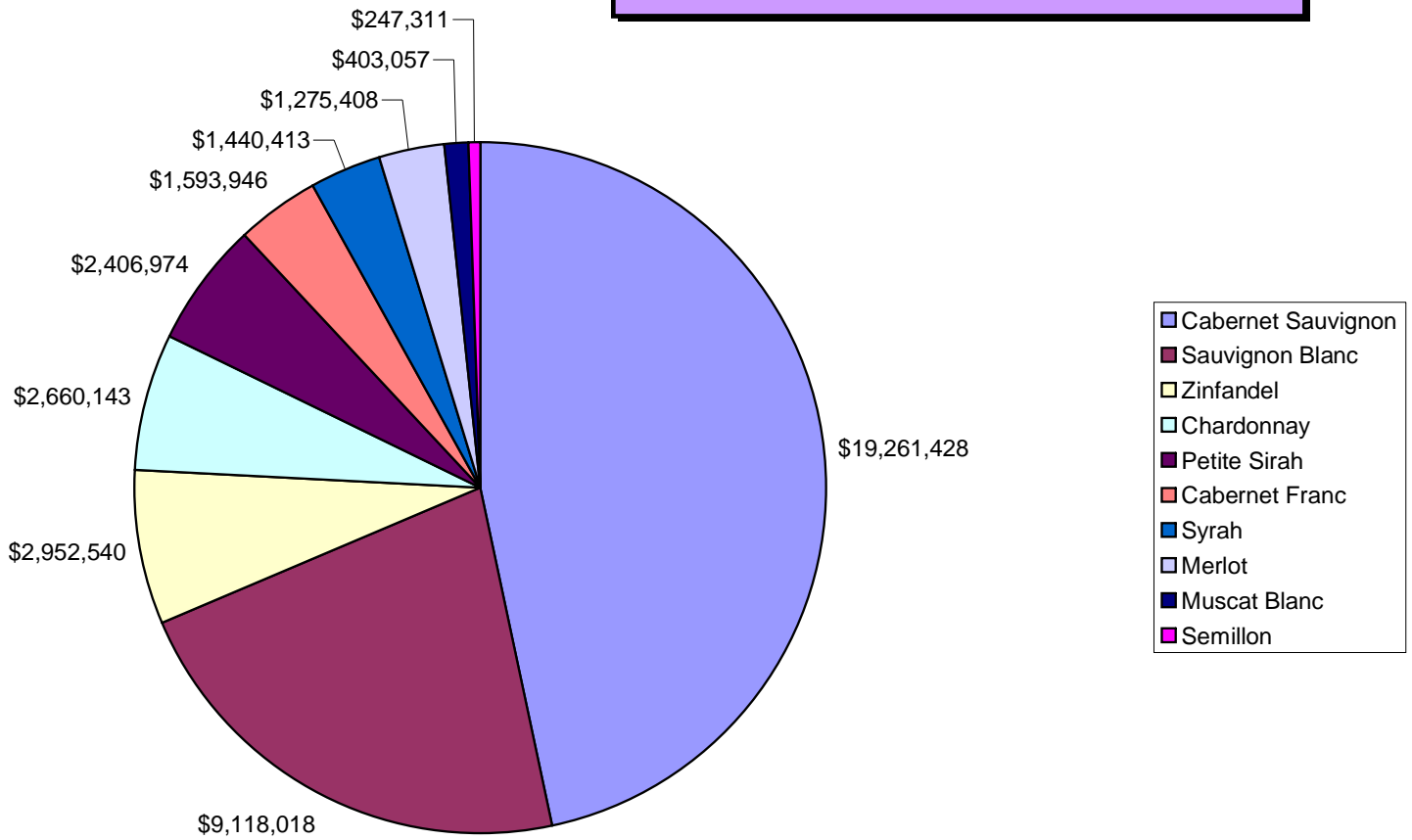


WINE VARIETIES BY VALUE

Variety	Production (Tons)	Returns/Ton	Gross Value
Cabernet Sauvignon	13,750.6	\$1,400.77	\$19,261,428
Sauvignon Blanc	10,314.5	\$884.00	\$9,118,018
Zinfandel	2,455.6	\$1,202.37	\$2,952,540
Chardonnay	1,992.9	\$1,334.81	\$2,660,143
Petite Sirah	1,662.7	\$1,447.63	\$2,406,974
Cabernet Franc	872.1	\$1,827.71	\$1,593,946
Syrah	1,192.0	\$1,208.40	\$1,440,413
Merlot	1,633.4	\$780.83	\$1,275,408
Muscat Blanc	349.6	\$1,152.91	\$403,057
Semillon	263.7	\$937.85	\$247,311
Pinot Noir	86.2	\$2,772.67	\$239,004
Pinot Gris	182.3	\$1,291.18	\$235,382
Petit Verdot	129.0	\$1,640.98	\$211,686
Malbec	120.7	\$1,747.32	\$210,902
Tempranillo	94.1	\$2,030.28	\$191,049
White Riesling	139.8	\$1,253.74	\$175,273
Viognier	136.2	\$1,279.47	\$174,264
Primitivo	88.1	\$1,659.99	\$146,245
Grenache	73.2	\$1,833.46	\$134,209
Other	784.7	\$474.07	\$372,006
TOTAL	36,321.4	\$1,196.24	\$43,449,258

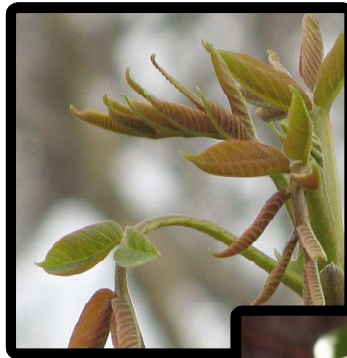


TOP 10 WINE GRAPE VARIETIES





Walnut Catkins



Walnuts Growing in Husks



Walnut Husks Starting to Split Open to Reveal the Walnut Inside



Walnut Husk Opening, Ready To Drop The Walnut



Walnut Free of Husk, Ready For Drying

Seasons of a Walnut Orchard



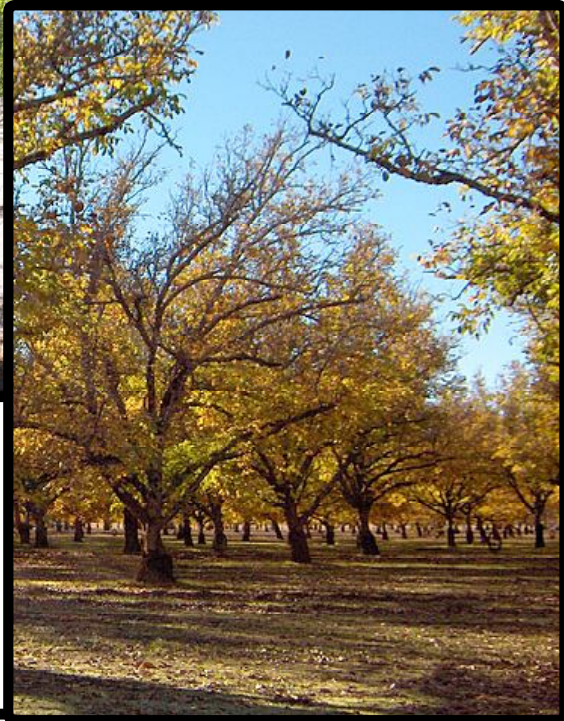
Young Orchard



Spring with Wild Flowers



Summer, Wild Turkeys Enjoying the Shade



Fall Color and Harvest Time



Winter Snow and the Trees are at Rest

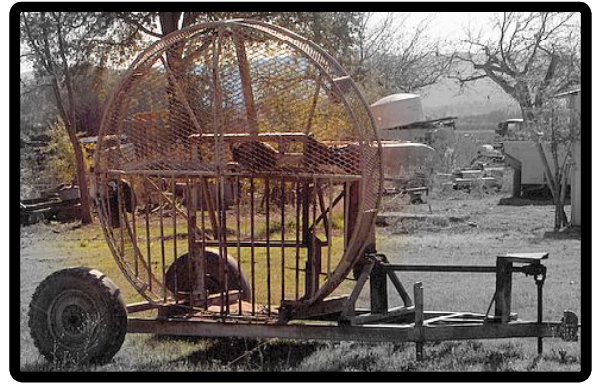


Walnut Pruning in the Winter

Equipment for Harvest



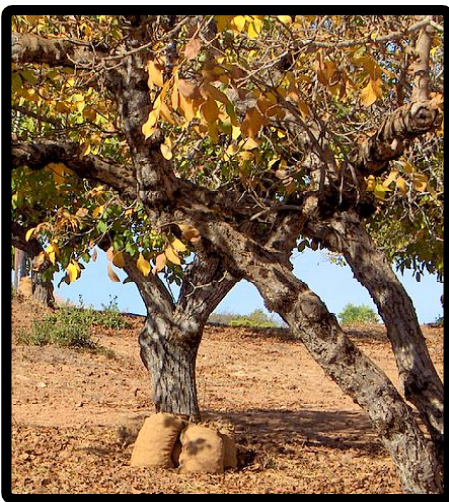
Tree shaker: grabs the tree trunk and shakes at a high frequency to knock the nuts to the ground.



Leaf blower: blows leaves away from the nuts so they can be either hand picked or mechanically picked.



Mechanical picker: picks up the nuts and drops them into a bin



Some nuts are hand picked. They are put into bags then dumped into bins.



Bins are put on trailers then taken to a walnut dryer.

At the Drying Shed



Walnuts are brought into a dryer in burlap bags or bins



Picked nuts being dumped into hopper

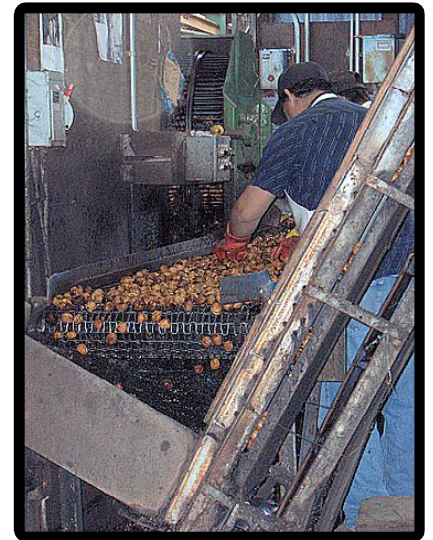
Nuts being cleaned of debris



After debris is removed, nuts are rolled to remove the remaining hulls and any small debris



Sorting cleaned nuts



Nuts going to dryer



Debris and cull nuts hauled away

LAKE COUNTY WALNUT PIE



Lake County Walnut Pie
Beat 3 eggs, add 1/2 cup brown sugar
Melt 1/4 cup butter and add with 1 cup corn syrup
Mix with the egg mixture
Stir in 2 cups walnuts, pieces and halves
Pour into 9 inch pie shell
Bake at 425 degrees for 10 minutes
then lower to 350 til crust is browned, 20-25 mins.



ENJOY !

This page is dedicated to the memory of Lucille Hill
who did so much for the Lake County walnut industry.

Year	Greenhouse Sq. Feet	Field Acres	Value
2007	69,900	77.1	\$5,112,004
2006	75,900	74.6	\$4,318,395

ITEM	YEAR	MBF²	VALUE³
Timber Yield	2007	3,684	\$802,700
	2006	928	\$339,069

¹Values furnished by the California State Board of Equalization
²Quantity of timber cut and scaled (Thousand Board Feet)
³Value of timber immediately before cutting

Commodity	Year	Acreage	Unit	\$ / Unit	Value
Irrigated Pasture	2007	1,800	Acre	\$ 100.00	\$ 180,000.00
	2006	2,000		\$ 120.00	\$ 240,000.00
Range	2007	90,000	Acre	\$ 5.00	\$ 450,000.00
	2006	90,000		\$ 7.00	\$ 630,000.00
Miscellaneous	2007	2,100	Acre		\$ 1,636,375.00
	2006	2,200			\$ 1,250,000.00
Includes Wild rice, oat hay, alfalfa, grass hay					
Total	2007	93,900			\$ 2,266,375.00
	2006	94,200			\$ 2,120,000.00

COMMODITY	YEAR	NO. OF HEAD	TOTAL CWT ¹ (LIVE WT.)	\$ PER CWT	VALUE
CATTLE AND CALVES	2007	3,151	25,206	\$97.85	\$2,466,300
	2006	3,515	28,123	\$80.00	\$2,249,900
MISCELLANEOUS ²	2007				\$46,237
	2006				\$45,946
TOTALS	2007				\$2,512,537
	2006				\$2,296,000

¹CWT = 100 lbs.

²Includes goats, sheep, hogs, and rabbits.



	Year	Value
Miscellaneous ¹	2007	\$ 146,105.00
	2006	\$ 133,701.00

¹ Includes eggs and cheese

Commodity	Year	Acres	Value
Miscellaneous Vegetables ¹	2007	50	\$ 235,500.00
	2006	50	\$ 242,355.00

¹ Includes, beans, peas, tomatoes, squash, pumpkins, etc.



CROPS	NUMBER OF FARMS	ACRES
Walnuts	78	1708
Wine Grapes	7	126
Misc. Fruit	8	37
Misc. Vegetables	8	17
Nursery	2	10
Apples	3	3
Pears	3	33
Total	109	1934



Vine Mealy Bug

	Traps Deployed	Program Hours		
	99	428		

Exotic Insect Pests

	Urban Traps	Program Hours		
	297	1,140.75		

Glassy-Winged Sharpshooter Trapping

	Urban Traps	Nursery Traps	Program Hours	
	109	33	1,034	

Glassy-Winged Sharpshooter Nursery Shipment Inspections

	Number of Inspections	Program Hours		
	100	243		

Biological Control

Pest	Agent /Mechanism	Scope of Program
Bull thistle	Gall Fly	2 Sites, Unknown Establishment
Italian Thistle	Seed Head Weevil	Generally Distributed
Klamath Weed	Klamath Weed Beetle	Widely Distributed
Yellow Starthistle	Seed Head Weevil	Widely Distributed
	Gall Fly	2 Sites, Unknown Establishment
	Flower Weevil	1 site
	Hairy Weevil	Becoming Generally Distributed
	Peacock Fly	Generally Distributed
	Yst Rust	4 sites, Unknown Establishment
Red Gum Lerp Psyllid	Wasp (<i>Psyllaephagus bliteus</i>)	1 Site, Well Established
Puncture Vine	Stem Boring Weevil	Generally Distributed

Pest Eradication

The Following Pests were under active control and eradication during the year: Dalmatian Toadflax, Scotch Thistle, Plumless Thistle, Artichoke Thistle, Oblong Spurge, Canada Thistle, Purple Star Thistle, and Hydrilla. (Hydrilla is a CDFA program supported by the Lake County Agriculture Department.)

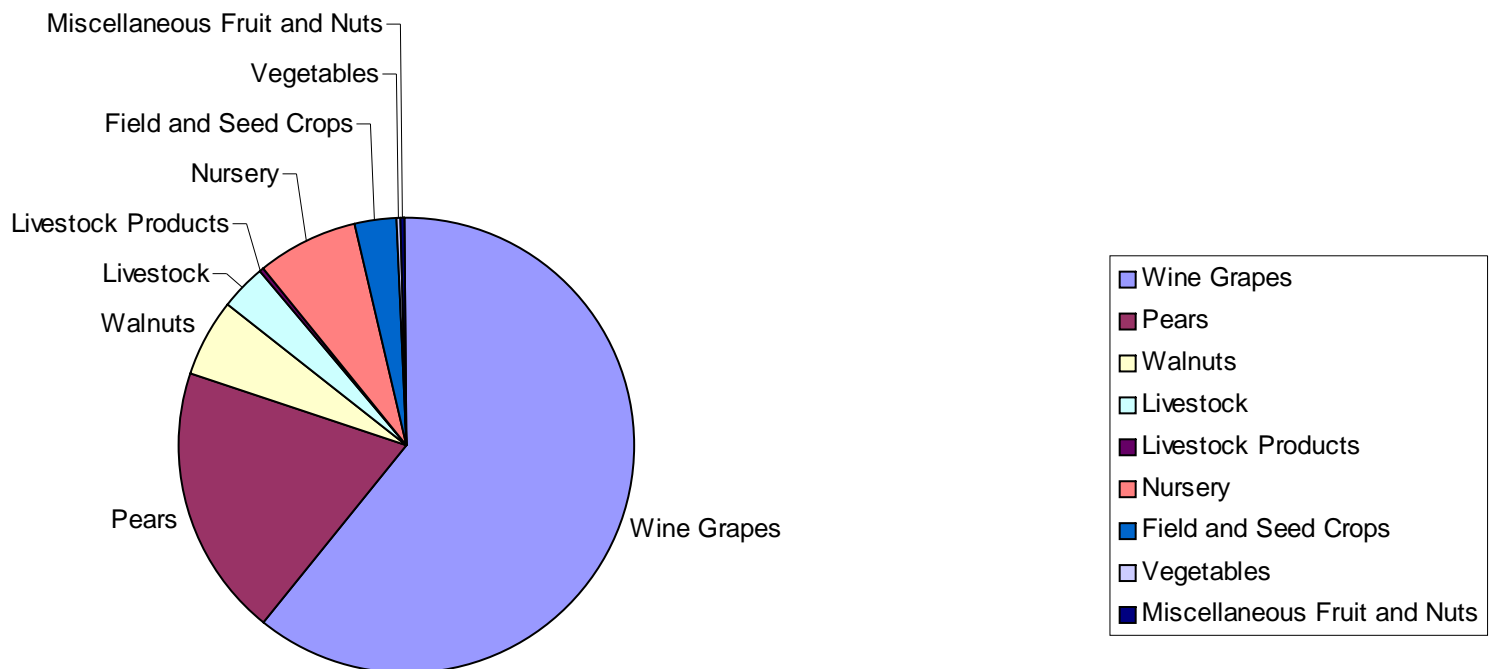
Pest Exclusion

Packages Profiled	2,945	Packages Inspected	468	Packages Rejected	1
-------------------	-------	--------------------	-----	-------------------	---

COMMODITY	YEAR	VALUE
FRUIT AND NUTS ¹	2007	\$ 61,595,000.00
	2006	\$ 59,317,000.00
LIVESTOCK PRODUCTION	2007	\$ 2,512,537.00
	2006	\$ 2,296,000.00
LIVESTOCK & POULTRY PRODUCTS	2007	\$ 146,105.00
	2006	\$ 133,701.00
NURSERY PRODUCTION	2007	\$ 5,112,004.00
	2006	\$ 4,318,395.00
VEGETABLE CROPS	2007	\$ 235,500.00
	2006	\$ 242,355.00
FIELD & SEED CROPS	2007	\$ 2,266,375.00
	2006	\$ 2,120,000.00
FOREST PRODUCTS	2007	\$ 802,700.00
	2006	\$ 339,069.00
GRAND TOTAL	2007	\$ 72,670,221.00
	2006	\$ 68,766,520.00

¹ Includes grapes, pears, walnuts and miscellaneous fruit and nuts

2007 Agricultural Production by Commodity



LAKE COUNTY BOARD OF SUPERVISORS

Ed Robey District 1
Jeff Smith District 2
Denise Rushing District 3
Anthony Farrington District 4
Rob Brown District 5

AGRICULTURAL COMMISSIONER
SEALER OF WEIGHTS & MEASURES

Steve Hajik

DEPUTY AGRICULTURAL COMMISSIONER
DEPUTY SEALER OF WEIGHTS & MEASURES

Chuck Morse

AGRICULTURAL BIOLOGISTS

Andrew Tritchler
Kristine Eutenier
Dana Thibeau

SECRETARY

Kristi Elsemore

FEDERAL WILDLIFE SERVICES STAFF

Greg Wamsley

Larry Johnson

AGRICULTURAL AIDES

Lynn Eutenier
Steve Woods



The 2007 Lake County Staff

Left to Right
Dana Thibeau, Andrew Tritchler, Kristi Elsemore, Steve Hajik, Kristine Eutenier, Chuck Morse



COUNTY OF LAKE

LAKE COUNTY



2008 CROP REPORT

FRUIT AND NUT CROPS

COMMODITY	MARKET TYPE	YEAR	PRODUCTION (TONS)	YIELD (TONS / ACRE)	RETURNS \$ / TON ¹	GROSS VALUE ¹	BEARING ACRES
WINE GRAPES							
WHITES		2008	10,962	4.4	\$957	\$10,490,578	2,518
		2007	13,981	5.6	\$939	\$13,131,700	2,494
REDS		2008	17,011	3.1	\$1,395	\$23,736,377	5,486
		2007	22,341	4.1	\$1,357	\$30,317,600	5,455
TOTAL ALL WINE GRAPES		2008	27,973	3.5	\$1,224	\$34,226,955	8,004
		2007	36,321	4.6	\$1,196	\$43,449,300	7,949
PEARS							
BARTLETT ² INCLUDING RED	FRESH	2008	16,252		\$660	\$10,726,320	
		2007	17,593		\$526	9255,000.00	
	CANNERY	2008	13,315		\$253	\$3,368,695	
		2007	14,709		\$211	\$3,101,000	
	BABY FOOD	2008	3,344		\$52	\$173,888	
		2007	1,282		\$55	\$70,400	
	BY- PRODUCTS	2008	2,542		\$37	\$94,054	
		2007	2,476		\$31	\$77,200	
TOTAL BARTLETT		2008	35,453	17.06	\$405	\$14,362,957	2,078
		2007	36,060	17.4	\$347	\$12,504,000	2,078
WINTER ² & ASIAN (INCLUDES BOSCH, COMICE, SECKEL)	FRESH	2008	697		\$844	\$588,268	
		2007	716		\$1,191	\$853,105	
	BY- PRODUCTS	2008	88		\$44	\$3,872	
		2007	315		\$17	\$5,396	
TOTAL WINTER & ASIAN		2008	785	9.02	\$754	\$592,140	87
		2007	1,031	11.8	\$833	\$859,000	
RED PEARS ² OTHER THAN BARTLETT (STARKRIMSON)	FRESH	2008	483		\$1,120	\$540,960	
		2007	488		\$1,248	\$609,477	
	BY- PRODUCTS	2008	138		\$92	\$12,696	
		2007	168		\$17	\$2,925	
TOTAL REDS		2008	621	14.44	\$892	\$553,656	43
		2007	656	15.3	\$933	\$612,400	43
TOTAL ALL PEARS		2008	36,859	16.69	\$421	\$15,508,753	2,208
		2007	37,747	17.1	\$370	\$13,975,000	2,208
WALNUTS							
IRRIGATED WALNUTS		2008	381	0.4	\$1,950	\$742,950	952
		2007	762	0.8	\$2,914	\$2,219,300	952
NON-IRRIGATED WALNUTS		2008	259	0.18	\$1,950	\$505,050	1,698
		2007	622	0.4	\$2,914	\$1,813,000	1,750
TOTAL ALL WALNUTS		2008	640	0.28	\$1,950	\$1,248,000	2,650
		2007	1,384	0.5	\$2,914	\$4,032,200	2,702
MISCELLANEOUS FRUITS & NUTS							
MISCELLANEOUS ³		2008				\$78,509	35.00
		2007				\$138,400	70
TOTAL ALL FRUIT AND NUTS		2008				\$51,062,217	12,897
		2007				\$61,595,000	12,929

¹ THIS IS GROSS VALUE AND DOES NOT REPRESENT NET RETURN TO THE PRODUCER.

² THIS IS THE FOB PRICE WHICH INCLUDES PROCESSING AND PACKING COSTS.

³ INCLUDES APPLES, PEACHES, STRAWBERRIES, MELONS, AND OLIVES

FRUIT AND NUT ACREAGE

CROP		BEARING ACRES	NON-BEARING ACRES	TOTAL
PEARS	BARTLETT	2,078	18	2096
	WINTER & ASIAN	87	0	87
	REDS	43	0	43
	TOTAL	2,208	18	2226
WINE GRAPES	WHITES	2,518	275	2793
	REDS	5,486	94	5580
	TOTAL	8,004	369	8373
WALNUTS		2,650	150	2800
MISCELLANEOUS ¹		35	32	67
TOTAL		12,897	569	13466

¹ INCLUDES APPLES, PEACHES, STRAWBERRIES, MELONS, DRIED FRUITS, OLIVES. ETC.



Pear Orchard in Kelseyville

NURSERY PRODUCTION

YEAR	GREENHOUSE SQ. FEET	FIELD ACRES	VALUE
2008	77,750	60	5,774,193
2007	69,900	77	5,112,004



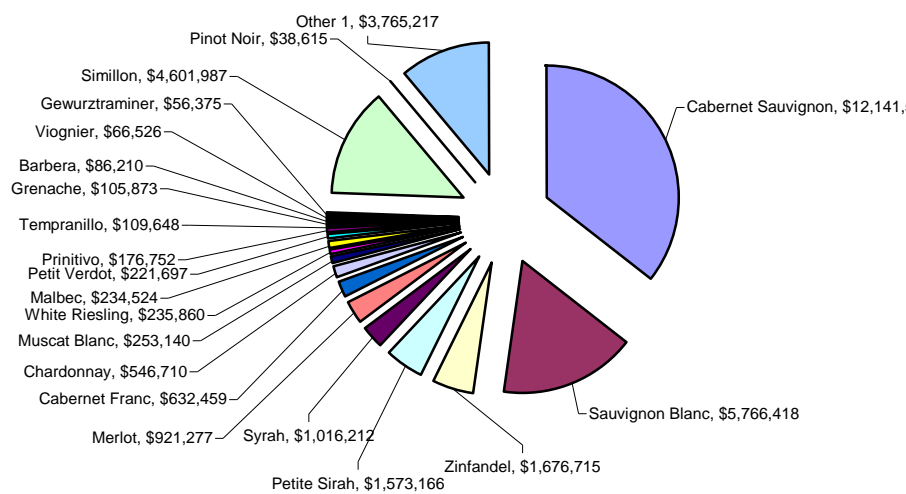


TOP WINE VARIETIES BY VALUE

Variety	Production (Tons)	Returns/Tons	Gross Value
Cabernet Sauvignon	8459.2	\$ 1,435.31	\$12,141,574
Sauvignon Blanc	6271.8	\$ 919.42	\$5,766,418
Zinfandel	1315.7	\$ 1,274.39	\$1,676,715
Petite Sirah	1057.1	\$ 1,488.19	\$1,573,166
Syrah	760.7	\$ 1,335.89	\$1,016,212
Merlot	1028.9	\$ 985.40	\$921,277
Cabernet Franc	377	\$ 1,677.61	\$632,459
Chardonnay	489.3	\$ 1,097.15	\$546,710
Muscat Blanc	224.7	\$ 1,126.57	\$253,140
White Riesling	171.1	\$ 1,378.49	\$235,860
Malbec	139.1	\$ 1,686.01	\$234,524
Petit Verdot	128.4	\$ 1,726.61	\$221,697
Prinitivo	130.9	\$ 1,701.17	\$176,752
Tempranillo	56.6	\$ 1,937.25	\$109,648
Grenache	59.2	\$ 1,788.40	\$105,873
Barbera	61.8	\$ 1,394.98	\$86,210
Viognier	47.5	\$ 1,400.55	\$66,526
Gewurztraminer	38.5	\$ 1,464.29	\$56,375
Simillon	38.9	\$ 1,183.03	\$4,601,987
Pinot Noir	25.3	\$ 1,526.29	\$38,615
Other ¹	7092.3	\$ 1,224.00	\$3,765,217
TOTAL	27974	\$ 1,224.00	\$34,226,955

¹ Other Returns/Tons is the averaged amount

Wine Varieties by Value



- Cabernet Sauvignon
- Sauvignon Blanc
- Zinfandel
- Petite Sirah
- Syrah
- Merlot
- Cabernet Franc
- Chardonnay
- Muscat Blanc
- White Riesling
- Malbec
- Petit Verdot
- Prinitivo
- Tempranillo
- Grenache
- Barbera
- Viognier
- Gewurztraminer
- Simillon
- Pinot Noir
- Other 1

VEGETABLE CROPS

COMMODITY	YEAR	ACRES	VALUE
MISCELLANEOUS VEGETABLES ¹	2008	35	\$219,767
	2007	50	\$235,500
¹ INCLUDES PUMPKINS, BEANS, SWEET CORN, GARLIC, HERBS, PEAS, POTATOES, SQUASH, TOMATOES, ETC.			



ORGANIC ¹ FARMING STATISTICS

CROPS	NUMBER OF FARMS	ACRES	VALUE
WALNUTS	63	1,595.00	
WINE GRAPES	11	356.00	
MISCELLANEOUS VEGETABLES	9	25.00	
NURSERY	2	0.50	
PEARS	3	52.00	
MISCELLANEOUS FRUIT	2	10.00	
TOTAL	90	2,038.50	\$2,331,562
¹ REGISTERED ORGANIC WITH THE LAKE COUNTY AGRICULTURAL COMMISSIONER			



FIELD AND SEED CROPS					
COMMODITY	YEAR	ACREAGE	UNIT	\$ / UNIT	VALUE
IRRIGATED PASTURE	2008	800	ACRE	\$ 100.00	\$80,000
	2007	1,800	ACRE	\$ 100.00	\$180,000
RANGE	2008	90,000	ACRE	\$ 5.00	\$450,000
	2007	90,000	ACRE	\$ 5.00	\$450,000
MISCELLANEOUS	2008	2,800	ACRE		\$1,454,500
	2007	2,100	ACRE		\$1,636,375
INCLUDES WILD RICE, OAT HAY, ALFALFA, GRASS HAY					
TOTAL	2008	93,600			\$1,984,500
	2007	93,900			\$2,266,375



Wild Rice Harvest

LIVESTOCK PRODUCTION

COMMODITY	YEAR	NO. OF HEAD	TOTAL CWT ¹ (LIVE WT.)	\$ PER CWT	VALUE
CATTLE AND CALVES	2008	2747	21976	\$ 84.62	\$1,859,600
	2007	3151	25206	\$ 97.85	\$2,466,300
MISCELLANEOUS ²	2008				\$35,800
	2007				\$46,237
TOTALS	2008				\$1,895,400
	2007				\$2,512,537
¹ CWT = 100 LBS					
² INCLUDES GOATS, SHEEP, HOGS, RABBITS AND MEAT CHICKENS.					

LIVESTOCK AND POULTRY PRODUCTS

	YEAR	VALUE
MISCELLANEOUS ¹	2008	\$250,739
	2007	\$146,105

TIMBER HARVEST ¹

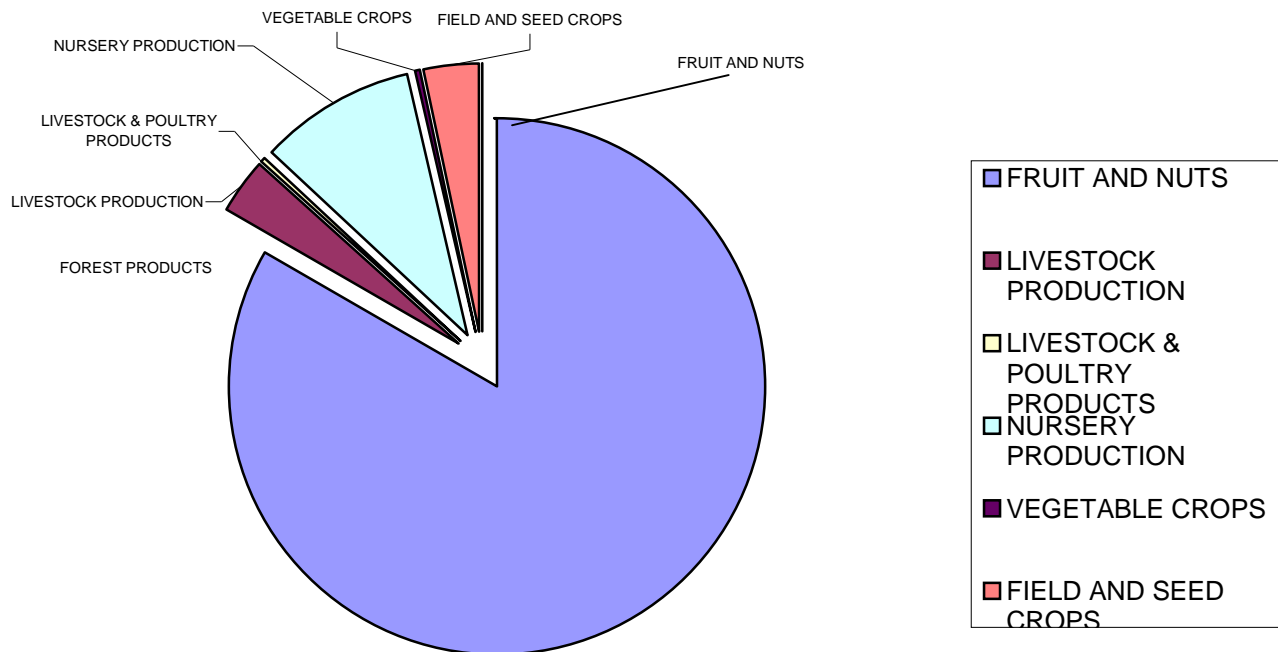
ITEM	YEAR	MBF ²	VALUE ³
Timber Yield	2008	0.0	0
	2007	3,684	\$ 802,700.00
¹ Values furnished by the California State Board of Equalization			
² Quantity of timber cut and scaled (Thousand Board Feet)			
³ Value of timber immediately before cutting			



SUMMARY OF PRODUCTION

COMMODITY	YEAR	VALUE
FRUIT AND NUTS	2008	\$51,062,217
	2007	\$61,595,000
LIVESTOCK PRODUCTION	2008	\$1,895,400
	2007	\$2,512,537
LIVESTOCK & POULTRY PRODUCTS	2008	\$250,739
	2007	\$146,105
NURSERY PRODUCTION	2008	\$5,774,193
	2007	\$5,112,004
VEGETABLE CROPS	2008	\$219,767
	2007	\$235,500
FIELD AND SEED CROPS	2008	\$1,984,500
	2007	\$2,266,375
FOREST PRODUCTS	2008	\$0
	2007	\$802,700
GRAND TOTAL	2008	\$61,186,816
	2007	\$72,670,221

Fruit and Nuts: Includes Grapes, Pears, Walnuts and Miscellaneous Fruit and Nuts



2008 AGRICULTURAL PRODUCTION BY COMMODITY

SUSTAINABLE AGRICULTURE REPORT

BIOLOGICAL CONTROL

BIOLOGICAL CONTROL IS THE DELIBERATE USE OF NATURAL ENEMIES TO SUPPRESS OR MANAGE PEST POPULATIONS AT ACCEPTABLE LEVELS.

PEST	AGENT / MECHANISM	SCOPE OF PROGRAM
BULL THISTLE	GALL FLY	2 SITES, UNKNOWN ESTABLISHMENT
ITALIAN THISTLE	SEED HEAD WEEVIL	GENERALLY DISTRIBUTED
KLAMATH WEED	KLAMATH WEED BEETLE	WIDELY DISTRIBUTED
YELLOW STARHISTLE	SEED HEAD WEEVIL	WIDELY DISTRIBUTED
	GALL FLY	2 SITES, UNKNOWN ESTABLISHMENT
	FLOWER WEEVIL	1 SITE
	HAIRY WEEVIL	BECOMING GENERALLY DISTRIBUTED
	PEACOCK FLY	GENERALLY DISTRIBUTED
	YST RUST	2 SITES
RED GUM LERP PSYLLID	WASP (<i>Psyllaephagus bliteus</i>)	1 SITE, WELL ESTABLISHED
PUNCTURE VINE	STEM BORING WEEVIL	GENERALLY DISTRIBUTED

PEST ERADICATION

THE FOLLOWING PESTS WERE UNDER ACTIVE CONTROL AND ERADICATION DURING THE YEAR: DALMATIAN TOADFLAX, SCOTCH THISTLE, PLUMELESS THISTLE, ARTICHOKE THISTLE, PURPLE STARHISTLE, OBLONG SPURGE, CANADA THISTLE, HYDRILLA*, SKELETON WEED

PEST EXCLUSION

PEST EXCLUSION INSPECTIONS ARE CONDUCTED DAILY

PACKAGES PROFILED	PACKAGES INSPECTED	PACKAGES REJECTED
2,676	561	1

PEST DETECTION

VINE MEALY BUG

TRAPS DEPLOYED	PROGRAM HOURS
125	310

EXOTIC INSECT PESTS ¹

URBAN TRAPS	PROGRAM HOURS
291	1,545

¹ INCLUDES TRAPS FOR MEDITERRANEAN FRUIT, ORIENTAL FRUIT FLY, MELON FLY, GYPSY MOTH, AND JAPANESE BEETLE

GLASSY-WINGED SHARPSHOOTER TRAPPING

URBAN TRAPS	NURSERY TRAPS	PROGRAM HOURS
103	17	680

GLASSY-WINGED SHARPSHOOTER NURSERY SHIPMENT INSPECTIONS

NUMBER OF INSPECTIONS	PROGRAM HOURS
66	294.5

LIGHT BROWN APPLE MOTH

TRAPS DEPLOYED	NURSERY TRAPS	PROGRAM HOURS
103	10	318.5

LAKE COUNTY BOARD OF SUPERVISORS

JIM COMSTOCK

JEFF SMITH

DENISE RUSHING

ANTHONY FARRINGTON

ROB BROWN

DISTRICT 1

DISTRICT 2

DISTRICT 3

DISTRICT 4

DISTRICT 5



Sunrise by Konocti

AGRICULTURAL COMMISSIONER, SEALER OF WEIGHTS & MEASURES

STEVE HAJIK

DEPUTY AGRICULTURAL COMMISSIONER, WEIGHTS AND MEASURES INSPECTOR III

KRISTINE EUTENIER

AGRICULTURAL BIOLOGISTS, WEIGHTS AND MEASURES INSPECTORS

ANDREW TRITCHLER

KATHERINE BLYLEVEN

SECRETARY

KRISTI ELSEMORE

FEDERAL WILDLIFE SERVICES STAFF

LARRY JOHNSON

GREG WAMSLEY

AGRICULTURAL AIDES

LYNN EUTENIER

STEVE WOODS

ALICE McCOMBS



2008 LAKE COUNTY STAFF

Lake County Staff: Upper Left to Right: Lynn Eutenier, Alice McCombs, Kristi Elsemore, Kris Eutenier, Steve Woods

Lower Left to Right: Katherine Blyleven, Andrew Tritchler, Steve Hajik

The 2008 Crop Report salutes the County's Farmer's Markets and Certified Growers



2009

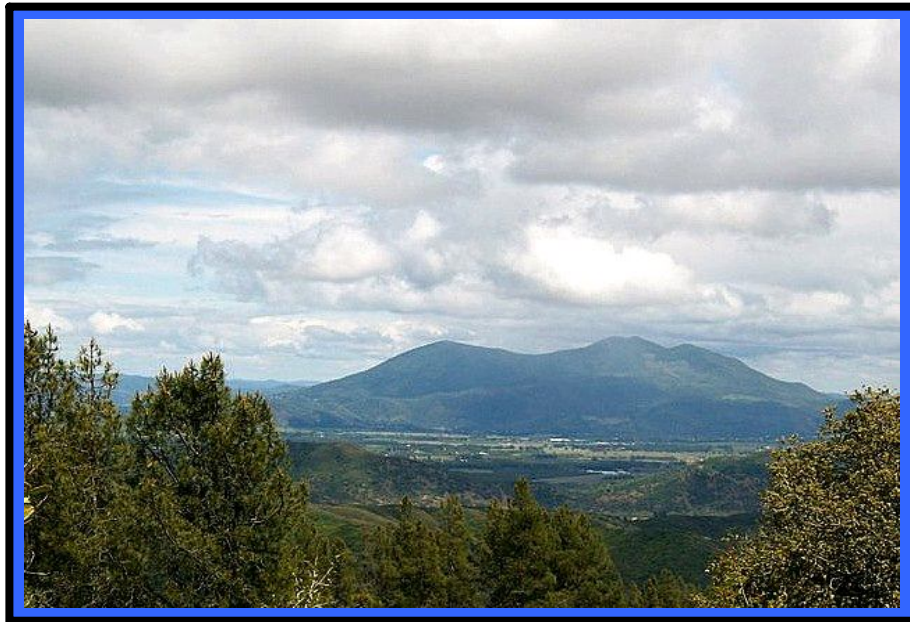
CROP REPORT

FRUIT AND NUT CROPS

COMMODITY	MARKET TYPE	YEAR	PRODUCTION (TONS)	YIELD (TONS / ACRE)	RETURNS \$ / TON ¹	GROSS VALUE ¹	BEARING ACRES
WINE GRAPES							
WHITES		2009	12,806	4.9	1,008 Avg	\$12,908,198	2,600
		2008	10,962	4.4	\$957	\$10,490,578	2,518
REDS		2009	18,817	3.6	\$1,357 Avg	\$25,542,222	5,115
		2008	17,011	3.1	\$1,395	\$23,736,377	5,486
TOTAL ALL WINE GRAPES		2009	31,623	4.1	\$1,216 AVG	\$38,450,420	7,715
		2008	27,973	3.5	\$1,224	\$34,226,955	8,004
PEARS							
BARTLETT ² INCLUDING RED	FRESH	2009	17,219		\$640	\$11,020,160	
		2008	16,252		\$660	\$10,726,320	
	CANNERY	2009	14,786		\$239	\$3,533,854	
		2008	13,315		\$253	\$3,368,695	
	BABY FOOD	2009	<i>included in By-products</i>				
		2008	3,344		\$52	\$173,888	
	BY-PRODUCTS	2009* ⁴	4,468		\$75	\$335,100	
		2008	2,542		\$37	\$94,054	
TOTAL BARTLETT		2009	36,473	17.55	408 avg	\$14,889,114	2,078
		2008	35,453	17.06	405 avg	\$14,362,957	2,078
WINTER ² & ASIAN (INCLUDES BOSCO, COMICE, SECKEL)	FRESH	2009	1,929.99		\$796	\$1,536,272	
		2008	697		\$844	\$588,268	
	BY-PRODUCTS	2009	816.81		\$27	\$22,054	
		2008	88		\$44	\$3,872	
TOTAL WINTER & ASIAN		2009	2,746.80	31.57	567 avg	\$1,558,326	87
		2008	785	9.02	754 avg	\$592,140	87
RED PEARS ² OTHER THAN BARTLETT (STARKRIMSON)	FRESH	2009	597.35		\$661	\$394,848	
		2008	483		\$1,120	\$540,960	
	BY-PRODUCTS	2009	204.13		\$24	\$4,899	
		2008	138		\$92	\$12,696	
TOTAL REDS		2009	801.48	18.64	499 avg	\$399,747	43
		2008	621	14.44	892 avg	\$553,656	43
TOTAL ALL PEARS		2009	40,021	18.13		\$16,847,187	2,208
		2008	36,859	16.69		\$15,508,753	2,208
WALNUTS							
IRRIGATED WALNUTS		2009	785	0.6	\$1,820	\$1,428,700	858
		2008	381	0.4	\$1,950	\$742,950	952
NON-IRRIGATED WALNUTS		2009	523	0.4	\$1,820	\$951,860	1,742
		2008	259	0.18	\$1,950	\$505,050	1,698
TOTAL ALL WALNUTS		2009	1,308	0.5	\$1,820	\$2,380,560	2,600
		2008	640	0.28	\$1,950	\$1,248,000	2,650
MISCELLANEOUS FRUITS & NUTS							
MISCELLANEOUS ³		2009				\$55,870	71
		2008				\$78,509	35
TOTAL ALL FRUIT AND NUTS		2009				\$57,734,037	12,594
		2008				\$51,062,217	12,897
¹ THIS IS GROSS VALUE AND DOES NOT REPRESENT NET RETURN TO THE PRODUCER.							
² THIS IS THE FOB PRICE WHICH INCLUDES PROCESSING AND PACKING COSTS.							
³ INCLUDES APPLES, PEACHES, STRAWBERRIES, MELONS, AND OLIVES							
⁴ Baby food was added into By-products in 2009, not a separate item							

FRUIT AND NUT ACREAGE					
CROP		BEARING ACRES	NON-BEARING ACRES	TOTAL	
PEARS	BARTLETT	2,078	10	2,088	
	WINTER & ASIAN	87	0	87	
	REDS	43	0	43	
	TOTAL	2,208	10	2,218	
WINE GRAPES	WHITES	2,600	295	2895	
	REDS	5,115	202	5317	
	TOTAL	7,715	497	8,212	
WALNUTS		2,600	150	2,750	
MISCELLANEOUS ¹		71	25	96	
TOTAL		12,594	909	13,276	

¹ INCLUDES APPLES, PEACHES, STRAWBERRIES, MELONS, DRIED FRUITS, OLIVES. ETC.



Mt. Konocti and the Big Valley Area

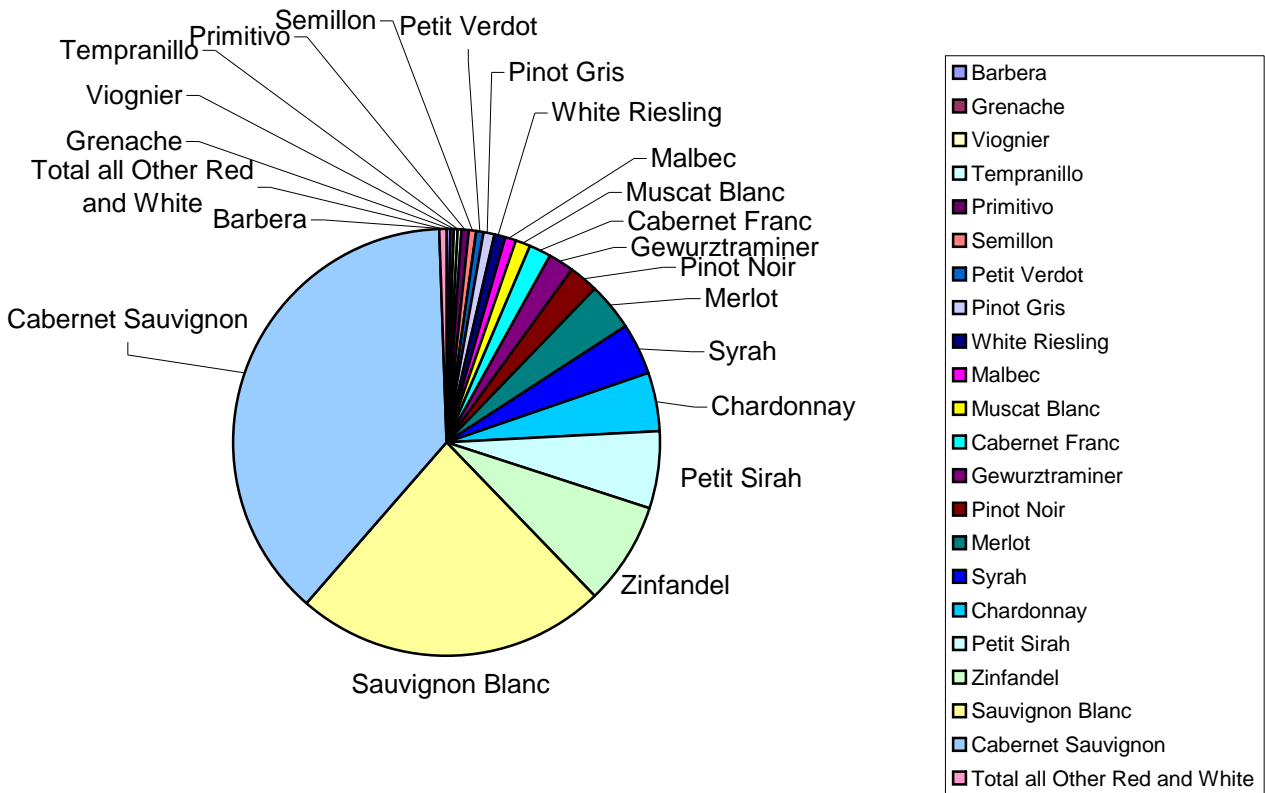
NURSERY PRODUCTION				
YEAR	GREENHOUSE SQ. FEET	FIELD ACRES	VALUE	
2009	76,350	73.5	\$ 3,533,133	
2008	77,750	60	\$ 5,774,193	



TOP WINE VARIETIES BY VALUE

Variety	Production (Tons)	Returns / Ton	Gross Value
Barbera	54.2	\$1,212.45	\$65,714.79
Grenache	79.4	\$1,328.53	\$105,485.28
Viognier	126.9	\$1,038.73	\$131,814.84
Tempranillo	97.3	\$1,644.39	\$159,999.15
Primitivo	73.3	\$2,245.66	\$164,606.88
Semillon	181.1	\$1,305.28	\$236,386.21
Petit Verdot	152.5	\$1,592.13	\$242,799.83
Pinot Gris	292.2	\$1,000.00	\$292,200.00
White Riesling	242.7	\$1,236.98	\$300,215.05
Malbec	193.7	\$1,763.72	\$341,632.56
Muscat Blanc	338.5	\$1,273.25	\$430,995.13
Cabernet Franc	438.3	\$1,533.85	\$672,286.46
Gewurztraminer	446	\$1,550.00	\$691,300.00
Pinot Noir	297.3	\$2,899.89	\$862,137.30
Merlot	1384.5	\$1,012.38	\$1,401,640.11
Syrah	1451.4	\$1,021.19	\$1,482,155.17
Chardonnay	1531.1	\$1,139.94	\$1,745,362.10
Petit Sirah	1522.7	\$1,464.21	\$2,229,552.57
Zinfandel	2496.1	\$1,197.27	\$2,988,505.65
Sauvignon Blanc	9575.1	\$942.56	\$9,025,106.26
Cabernet Sauvignon	10,523.90	\$1,398.11	\$14,713,569.00
Total all Other Red and White	105.7	\$13,518.20	\$166,956.19
Totals	31,603.90	AVG \$1,969.03	\$38,450,420

Variety by Value



VEGETABLE CROPS

COMMODITY	YEAR	ACRES	VALUE
MISCELLANEOUS VEGETABLES ¹	2009	35	\$193,288
	2008	35	\$219,767
<small>¹ INCLUDES PUMPKINS, BEANS, SWEET CORN, GARLIC, HERBS, PEAS, POTATOES, SQUASH, TOMATOES, ETC.</small>			



ORGANIC ¹ FARMING STATISTICS

CROPS	NUMBER OF FARMS	ACRES	VALUE
WALNUTS	62	1,746	
WINE GRAPES	14	336	
MISCELLANEOUS VEGETABLES	13	28	
NURSERY	2	1	
PEARS	4	82	
MISCELLANEOUS FRUIT	6	4	
FIELD, SEED AND PASTURE	2	12	
TOTAL	103	2,209	\$2,912,266
<small>¹ REGISTERED ORGANIC WITH THE LAKE COUNTY AGRICULTURAL COMMISSIONER</small>			



FIELD AND SEED CROPS					
COMMODITY	YEAR	ACREAGE	UNIT	\$ / UNIT	VALUE
IRRIGATED PASTURE	2009	800	ACRE	\$ 100.00	\$80,000
	2008	800	ACRE	\$ 100.00	\$80,000
RANGE	2009	90,000	ACRE	\$ 4.50	\$405,000
	2008	90,000	ACRE	\$ 5.00	\$450,000
MISCELLANEOUS ¹	2009	3172	ACRE	\$ 358.00	\$1,135,576
	2008	2,800	ACRE	\$ 519.00	\$1,453,200
¹ INCLUDES WILD RICE, OAT HAY, ALFALFA, GRASS HAY					
TOTAL	2009	93,972	ACRE		\$1,620,576
	2008	93,600	ACRE		\$1,984,500



OLD PHOTOS OF LAKE COUNTY

Date From 1938 -1960's



Weed Control Unknown Date



Steaming Pear Trees for Codling Moth 1938?



Aerial Spraying



Clear Lake



Kelseyville Pear Orchards, 1960's?



Big Valley, Kelseyville Area 1960?



Ag. Dept. Weed Control, 1960's

LIVESTOCK PRODUCTION

COMMODITY	YEAR	NO. OF HEAD	TOTAL CWT ¹ (LIVE WT.)	\$ PER CWT	VALUE
CATTLE AND CALVES	2009	2,797	22,376	\$ 84.68	\$1,894,800
	2008	2,747	21,976	\$ 84.62	\$1,859,600
MISCELLANEOUS ²	2009				\$35,856
	2008				\$35,800
TOTALS	2009				\$1,971,212
	2008				\$1,895,400
¹ CWT = 100 LBS					
² INCLUDES GOATS, SHEEP, HOGS, RABBITS AND MEAT CHICKENS.					

LIVESTOCK AND POULTRY PRODUCTS

	YEAR		VALUE
MISCELLANEOUS ¹	2009		\$101,715
	2008		\$250,739

¹ Includes Eggs, Cheese, Wool and Manure

TIMBER HARVEST ¹

ITEM	YEAR	MBF ²	VALUE ³
Timber Yield	2009	0	0
	2008	0	0
¹ Values furnished by the California State Board of Equalization			
² Quantity of timber cut and scaled (Thousand Board Feet)			
³ Value of timber immediately before cutting			

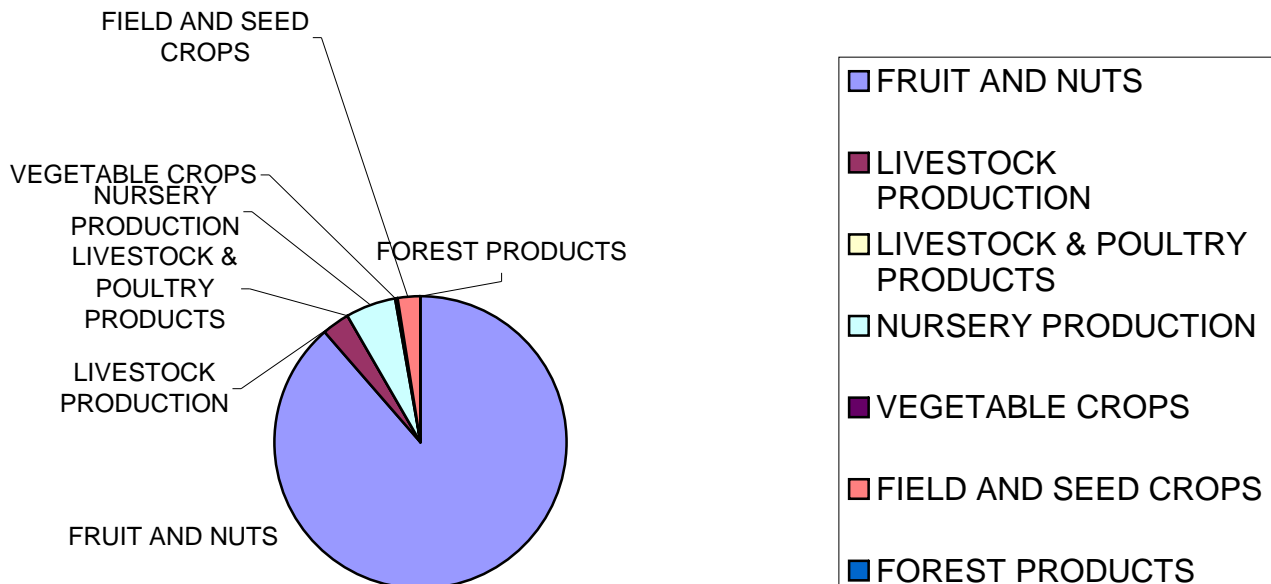


SUMMARY OF PRODUCTION

COMMODITY	YEAR	VALUE
FRUIT AND NUTS	2009	\$57,734,037
	2008	\$51,062,217
LIVESTOCK PRODUCTION	2009	\$1,971,212
	2008	\$1,895,400
LIVESTOCK & POULTRY PRODUCTS	2009	\$101,715
	2008	\$250,739
NURSERY PRODUCTION	2009	\$3,533,133
	2008	\$5,774,193
VEGETABLE CROPS	2009	\$193,288
	2008	\$219,767
FIELD AND SEED CROPS	2009	\$1,620,576
	2008	\$1,984,500
FOREST PRODUCTS	2009	\$0
	2008	\$0
GRAND TOTAL	2009	\$65,153,961
	2008	\$61,186,816

Fruit and Nuts: Includes Grapes, Pears, Walnuts and Miscellaneous Fruit and Nuts

Summary of Production



SUSTAINABLE AGRICULTURE REPORT

BIOLOGICAL CONTROL

BIOLOGICAL CONTROL IS THE DELIBERATE USE OF NATURAL ENEMIES TO SUPPRESS OR MANAGE PEST POPULATIONS AT ACCEPTABLE LEVELS.

PEST	AGENT / MECHANISM	SCOPE OF PROGRAM
BULL THISTLE	GALL FLY	2 SITES, UNKNOWN ESTABLISHMENT
ITALIAN THISTLE	SEED HEAD WEEVIL	GENERALLY DISTRIBUTED
KLAMATH WEED	KLAMATH WEED BEETLE	WIDELY DISTRIBUTED
YELLOW STAR THISTLE	SEED HEAD WEEVIL	WIDELY DISTRIBUTED
	GALL FLY	2 SITES, UNKNOWN ESTABLISHMENT
	FLOWER WEEVIL	1 SITE
	HAIRY WEEVIL	BECOMING GENERALLY DISTRIBUTED
	PEACOCK FLY	GENERALLY DISTRIBUTED
YELLOW STAR THISTLE RUST		2 SITES
RED GUM LERP PSYLLID	WASP (<i>Psyllaephagus bliteus</i>)	1 SITE, WELL ESTABLISHED
PUNCTURE VINE	STEM BORING WEEVIL	GENERALLY DISTRIBUTED

PEST ERADICATION

THE FOLLOWING PESTS WERE UNDER ACTIVE CONTROL AND ERADICATION DURING THE YEAR: DALMATIAN TOADFLAX, SCOTCH THISTLE, PLUMELESS THISTLE, ARTICHOKE THISTLE, PURPLE STAR THISTLE, OBLONG SPURGE, CANADA THISTLE, HYDRILLA*, SKELETON WEED

(Hydrilla is a CDFA program supported by the Lake County Agriculture Department.)

PEST EXCLUSION

PEST EXCLUSION INSPECTIONS ARE CONDUCTED DAILY

PACKAGES PROFILED	PACKAGES INSPECTED	PACKAGES REJECTED
2,252	683	0

PEST DETECTION

VINE MEALY BUG

TRAPS DEPLOYED	PROGRAM HOURS
130	178.5

EXOTIC INSECT PESTS ¹

URBAN TRAPS	PROGRAM HOURS
294	991

¹ INCLUDES TRAPS FOR MEDITERRANEAN FRUIT FLY, ORIENTAL FRUIT FLY, MELON FLY, GYPSY MOTH, AND JAPANESE BEETLE

GLASSY-WINGED SHARPSHOOTER TRAPPING

URBAN TRAPS	NURSERY TRAPS	PROGRAM HOURS
103	24	613.5

GLASSY-WINGED SHARPSHOOTER NURSERY SHIPMENT INSPECTIONS

NUMBER OF INSPECTIONS	PROGRAM HOURS
70	161

LIGHT BROWN APPLE MOTH

TRAPS DEPLOYED	NURSERY TRAPS	PROGRAM HOURS
103	20	187.5

LAKE COUNTY BOARD OF SUPERVISORS

JIM COMSTOCK	DISTRICT 1
JEFF SMITH	DISTRICT 2
DENISE RUSHING	DISTRICT 3
ANTHONY FARRINGTON	DISTRICT 4
ROB BROWN	DISTRICT 5



AGRICULTURAL COMMISSIONER, SEALER OF WEIGHTS & MEASURES

STEVE HAJIK

DEPUTY AGRICULTURAL COMMISSIONER, WEIGHTS AND MEASURES INSPECTOR III

KRISTINE EUTENIER

AGRICULTURAL BIOLOGISTS, WEIGHTS AND MEASURES INSPECTORS

ANDREW TRITCHLER
KATHERINE BLYLEVEN

SECRETARY

KRISTI ELSEMORE

FEDERAL WILDLIFE SERVICES STAFF

LARRY JOHNSON
GREG WAMSLEY

AGRICULTURAL AIDES

LYNN EUTENIER
STEVE WOODS
ALICE McCOMBS



2009 LAKE COUNTY STAFF

Lake County Staff: Upper Left to Right: Lynn Eutenier, Alice McCombs, Kristi Elsemore, Kris Eutenier, Steve Woods
Lower Left to Right: Katherine Blyleven, Andrew Tritchler, Steve Hajik