



AgEcon SEARCH
RESEARCH IN AGRICULTURAL & APPLIED ECONOMICS

The World's Largest Open Access Agricultural & Applied Economics Digital Library

This document is discoverable and free to researchers across the globe due to the work of AgEcon Search.

Help ensure our sustainability.

Give to AgEcon Search

AgEcon Search

<http://ageconsearch.umn.edu>

aesearch@umn.edu

*Papers downloaded from **AgEcon Search** may be used for non-commercial purposes and personal study only. No other use, including posting to another Internet site, is permitted without permission from the copyright owner (not AgEcon Search), or as allowed under the provisions of Fair Use, U.S. Copyright Act, Title 17 U.S.C.*

Governance Implications of Higher Levels of Unallocated Equity

Phil Kenkel, Oklahoma State Univ.

Mike Boland, University of Minnesota

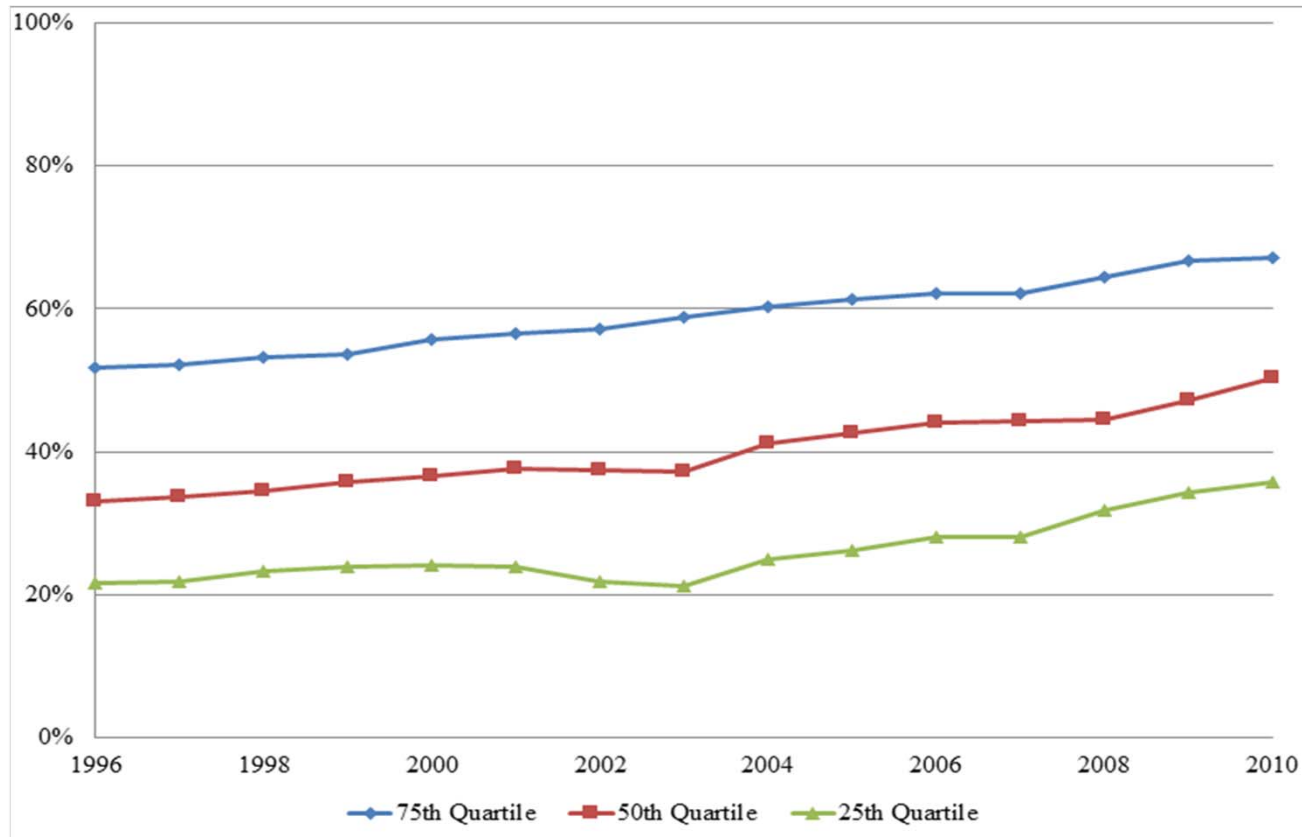
Background

- Cooperative equity structure is one of the most unique aspects of the business model
- Most U.S. agricultural cooperatives function under a structure of a small membership share and revolving equity distributed as patronage
- Consistent with “user owner” and “user benefit” principles

Origins of Unallocated Equity

- 1911: National Farmers Union suggested that it was permissible to retain a portion of profits as unallocated reserves
- 1922: IRS recognized that it was prudent to have a portion of equity as unallocated-typically interpreted as 10% total equity
- “User Benefit” principle relaxed and a new dimension of “User Owner” was created.

Recent Growth of Unallocated Equity



Unallocated income as a percentage of total equity for local farm supply and grain and oilseed marketing cooperatives, 1996 to 2010 (Boland 2012).

Driving Forces

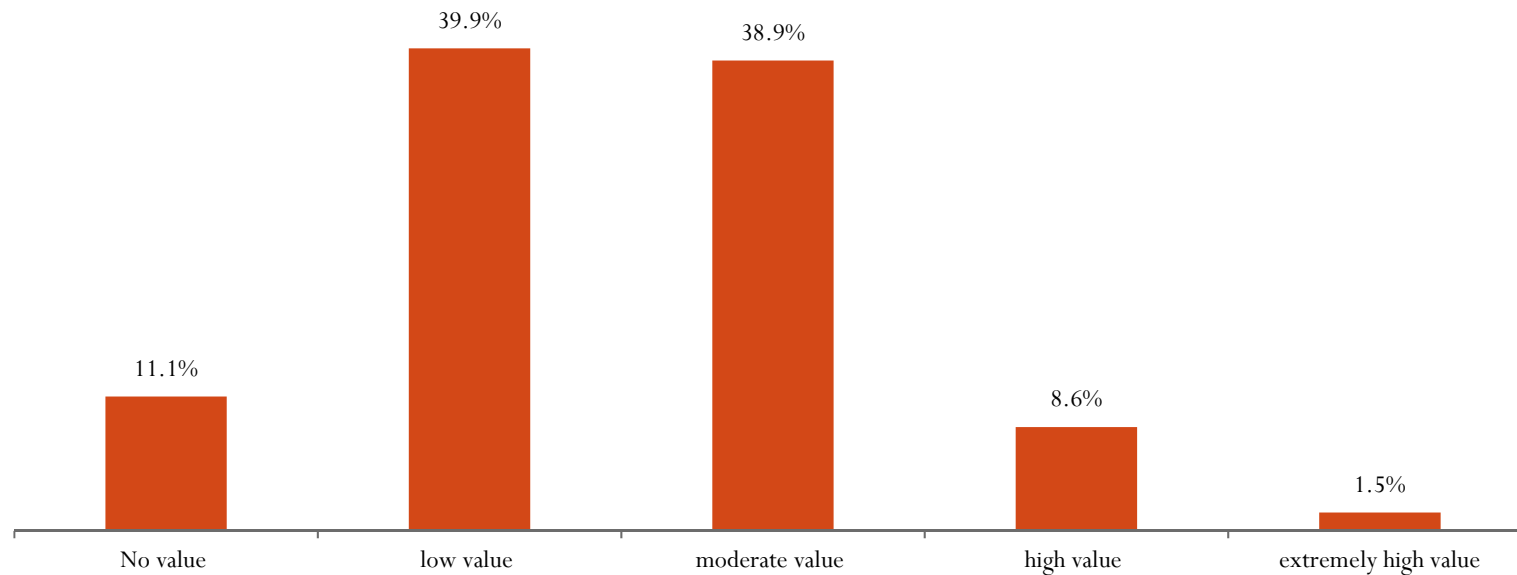
- Need to invest in new assets
 - Increase in crop yields
 - Changing cropping patterns
 - Parallel increase in crop inputs
- Section 199 Tax Credit
- Changing attitudes of the board of directors
 - Retaining regional patronage as unallocated
 - Retaining a higher portion of member-based profits as unallocated equity

Implications

- Balance sheet structure doesn't matter if members are satisfied with services and opportunity for future patronage
- One member-one vote system could enable inactive members to liquidate the cooperative to gain access to the unallocated equity
- Results of national survey suggest at least a moderate threat

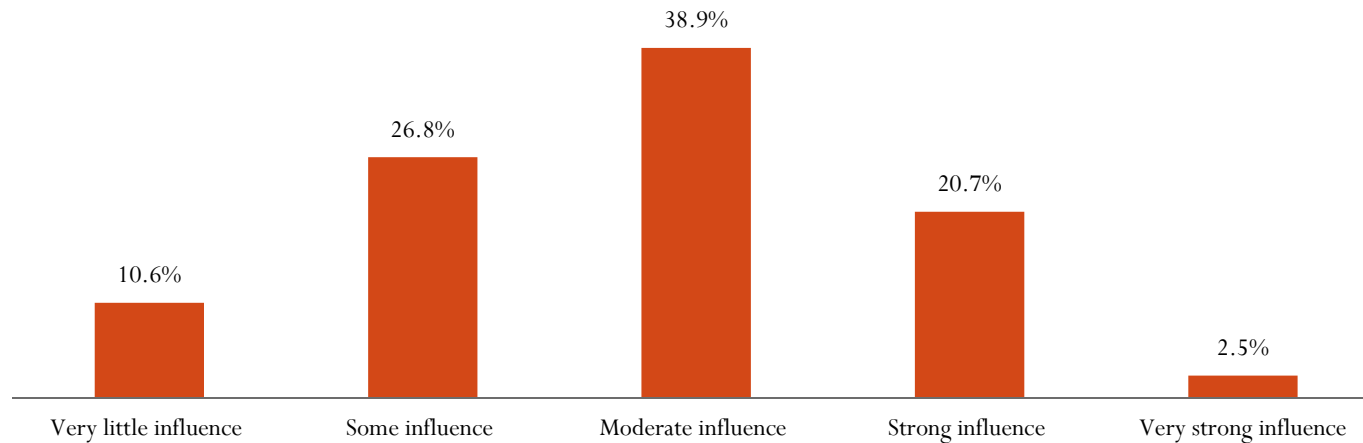
Around 50% Think Members Place Moderate to High Value on Allocated Equity

How Much Value Do You Think Members Place on Allocated Equity?



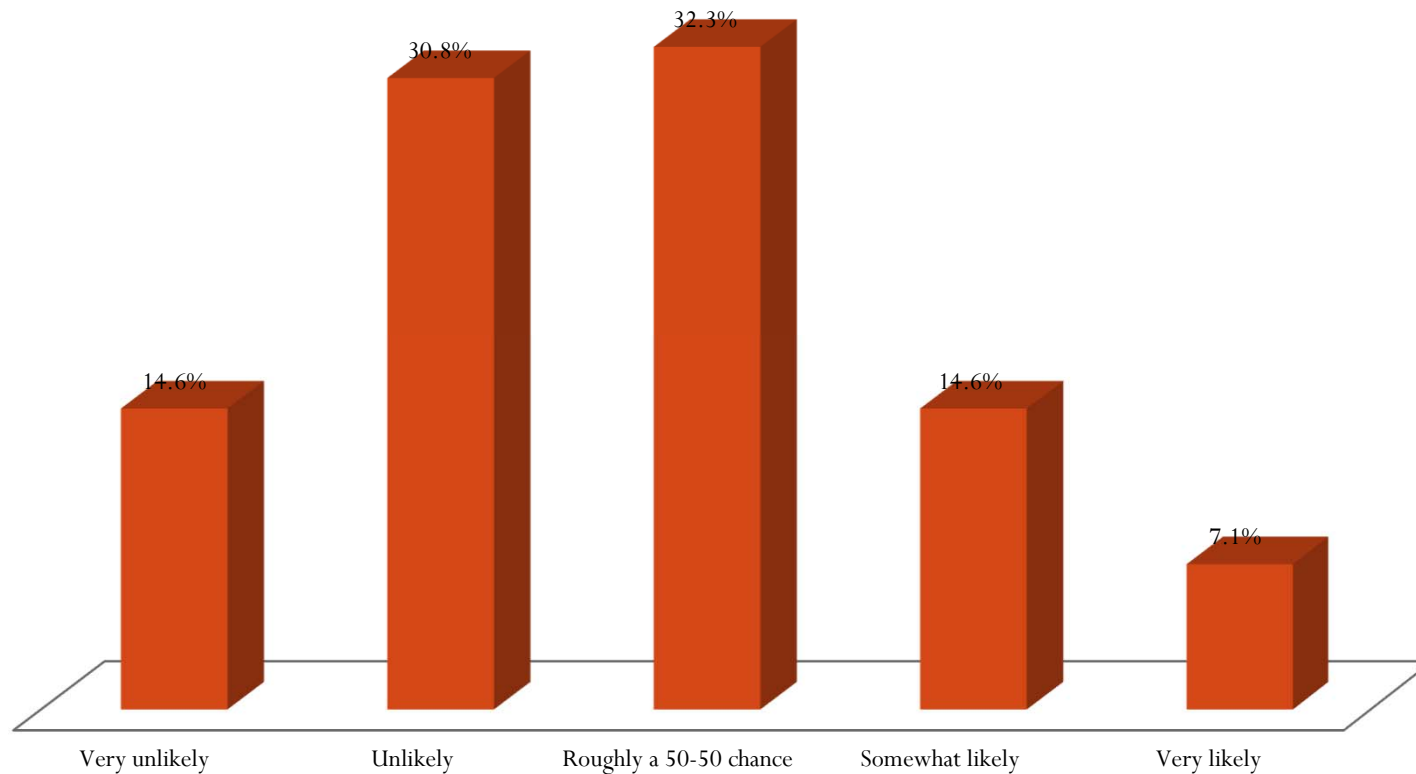
62% Think Allocated Equity Influences Involvement

How Much Does a Member's Allocated Equity Effect Their Decision to be Involved in Governance?



54% Thought That Members Would Sell at 200% Allocated

**Would Members Sell the Cooperative
for Twice the Value of Their Allocated Equity?**



Change in Business Philosophy

- Argument that members place little value on revolving equity
- Argument that members are most interested infrastructure and are willing to fund the next generation
- Other cooperative forms such as credit union operate without revolving equity
- Some family owned companies are controlled by members with small portion of total ownership capital

Other Possible Adjustments

- Retain future profits as allocated equity-possibly as nonqualified equity
- Pay dividends on allocated equity which are funded from non-member profits which would otherwise be retained as unallocated equity
- “Reallocate” a portion of the unallocated equity
- Create “indivisible reserves”- class of unallocated equity that cannot be distributed in liquidation but is instead used for new cooperative development or for cooperative organizations

Is “Reallocating” Possible?

- Have to be in the form of nonqualified since the 8 ½ month time period for a qualified distribution has expired
- Would have to demonstrate that the equity being reallocated came from member-based profits
- Would require the records to essentially recalculate patronage which might make it impractical to go back past the most recent few fiscal years
- No precedent that we know of

Indivisible Reserves

- ICA specifies IR as a component of its 3rd cooperative principle: “member economic participation.”
- Common in European cooperatives where retained indivisible reserves are tax deductible. Often mentioned in context of workers cooperatives
- Would require changes to Bylaws and possible Articles of Incorporation
- If members truly buy in to a permanent capital model then the indivisible reserve structure is logical.
- Are members really indifferent to property rights to equity capital?

Higher Unallocated Equity and Communication Efforts

- Make sure members “buy in” to the change
- Communicate the need for infrastructure re-investment
- Emphasize the value for future generations
- Explain the value of future patronage and use

Governance Changes: Voting

- Purge voter roles of inactive members
- Establish a threshold of annual business to maintain voting privileges- Example: \$5,000
- Increase the majority threshold for a special meeting and/or a motion to dissolve the cooperative
- Require two different membership votes with “cooling off period” for major actions
- Clarify when the board of directors has an obligation to take an outside offer to the membership

Governance Changes (continued)

- Define and communicate the procedures for distributing the residual value in liquidation
 - Active members during a specified look back period
 - Define requirements for active membership
 - Define a specific look back period. (some auditors suggest that 6 years is a minimum)
 - Those defined procedures reduce the incentive of inactive members to pursue liquidation

Board Succession

- Firms controlled by a smaller sub-set of active owners tend to yield more power to the CEO
- Places more emphasis on having the right talent in the board room
- Active process of director recruitment and nomination helps to prevent nominations from the floor
- Good time to address gender diversity and nomination and voting processes

Changing Board Election and Annual Meeting Format

- Call for director nominations months before the annual meeting
- Ballots, nominee statements and biography are mailed
- Director election results announced at annual meeting