



AgEcon SEARCH
RESEARCH IN AGRICULTURAL & APPLIED ECONOMICS

The World's Largest Open Access Agricultural & Applied Economics Digital Library

This document is discoverable and free to researchers across the globe due to the work of AgEcon Search.

Help ensure our sustainability.

Give to AgEcon Search

AgEcon Search

<http://ageconsearch.umn.edu>

aesearch@umn.edu

*Papers downloaded from **AgEcon Search** may be used for non-commercial purposes and personal study only. No other use, including posting to another Internet site, is permitted without permission from the copyright owner (not AgEcon Search), or as allowed under the provisions of Fair Use, U.S. Copyright Act, Title 17 U.S.C.*



GEORG-AUGUST-UNIVERSITÄT
GÖTTINGEN



Hedging against irrigation costs by means of index-based weather insurance

SCC-76 Annual Meeting

Pensacola, 30 March - 01 April 2017

Matthias Buchholz & Oliver Musshoff

Department of Agricultural Economics and Rural Development
University of Goettingen



1. Motivation & objectives
2. Case study area & data
3. Design & pricing of index-based weather insurance
4. Results
5. Conclusive remarks / future research



- Droughts during cropping season as major driver for yield uncertainty
- Irrigation can be considered as a straightforward on-farm instrument for hedging risks associated with the absence of precipitation (Buchholz & Musshoff 2014; Finger 2013; Garrido et al. 2006)
- Irrigation also involves high costs for farmers that are uncertain and vary substantially depending on the weather conditions



General purpose: Using index-based weather insurance to hedge against operating costs of irrigation in dry years?

- For agricultural insurance: Primary focus on hedging yield risks (e.g. Richards et al. 2004, Turvey 2001, Vedenov & Barnett 2004, Woodard & Garcia 2008)
- Studies that focus on hedging against volatile costs of agricultural inputs (irrigation) are rare (e.g. Mafoua & Turvey 2003)

- Major drawbacks of index insurance:

- Geographical basis risk
- Need for a valid underlying



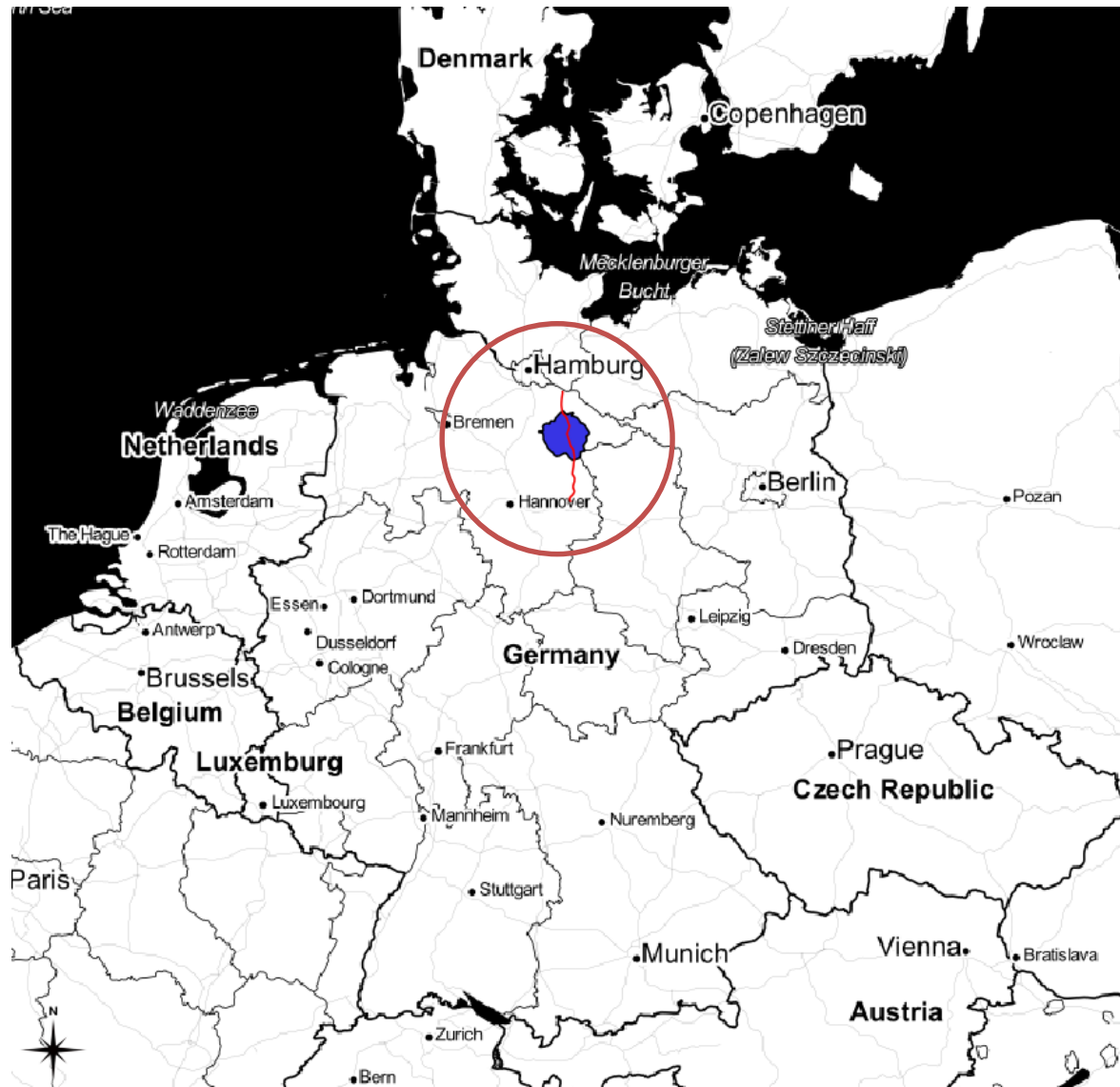
Gridded weather data
Climatic water balance

Improve
performance?

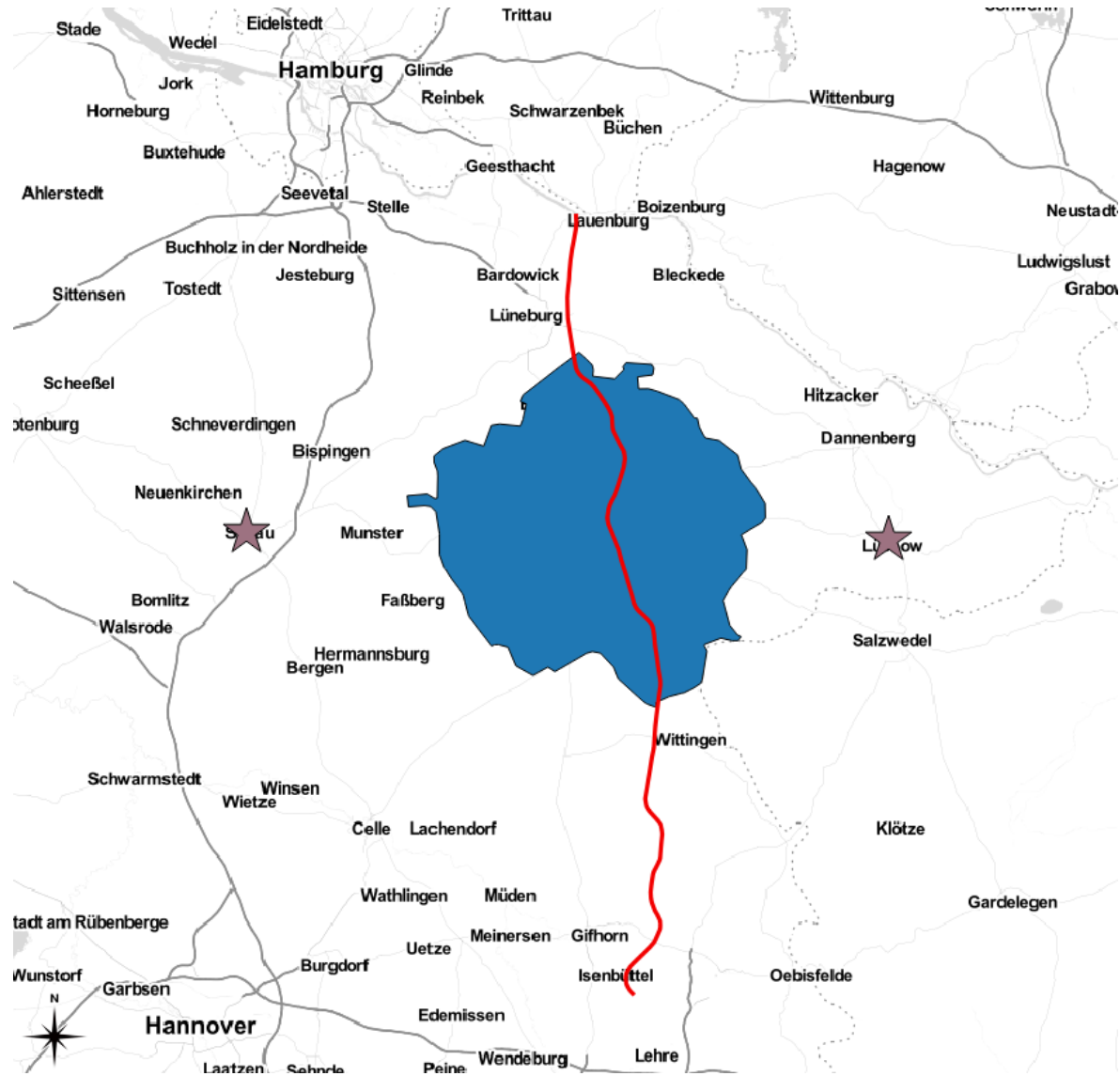


- Germany's major irrigation area
- Highly specialized cash crop farming despite poor soils
- Focus: Water user association with about 11,000 hectares of arable land
- Water withdrawals from the local channel 'Elbe-Seitenkanal'
- Aggregated water applications from 1980-2011 (Dachverband Elbe-Seitenkanal 2015)
- Irrigation systems are already installed
- Actual irrigation costs comprising pumping, labor and maintenance (not including overhead costs) amount to 0.2 €/m³

Case study area: Lower Saxony (northern Germany)



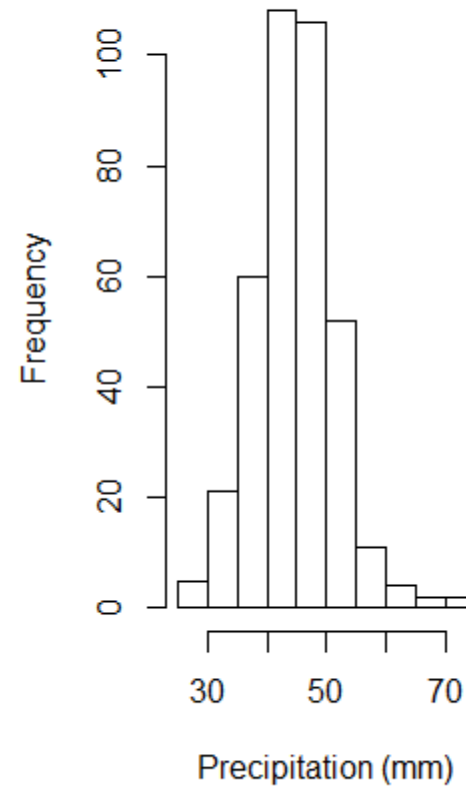
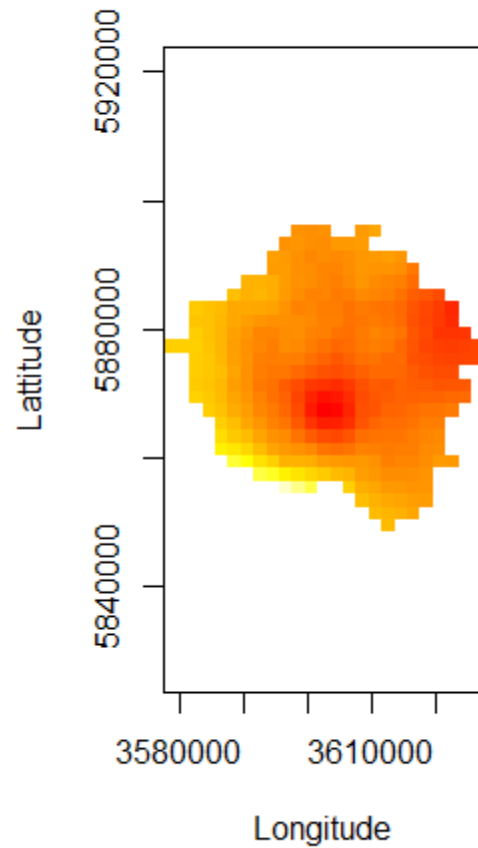
Station-based vs. regionalized gridded weather data





- Provided by German meteorological service (DWD 2015)
- Spatial resolution of 1 km x 1 km
- Gridded fields of weather variables are interpolated from station data
- Use of different multiple linear regression approaches depending on the specific weather variable and temporal resolution (Kaspar et al. 2013; Rauthe et al. 2013)
 - Estimation of background fields
 - Consideration of orographic parameters
 - Inverse distance weighting
 - Triangulation
 - Plausibility checks / Quality control

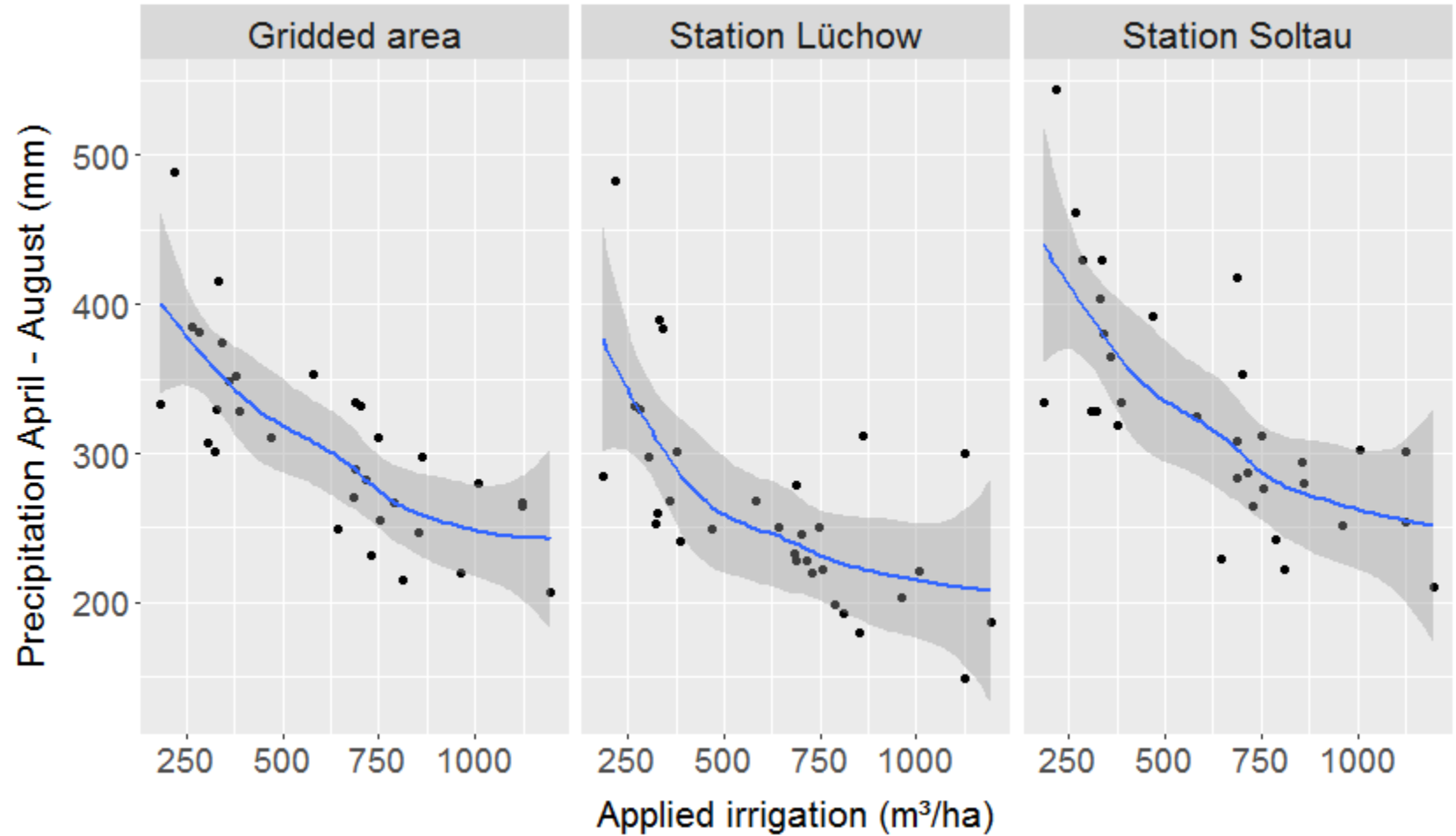
Example: Gridded accumulated precipitation June 2016 (in mm)



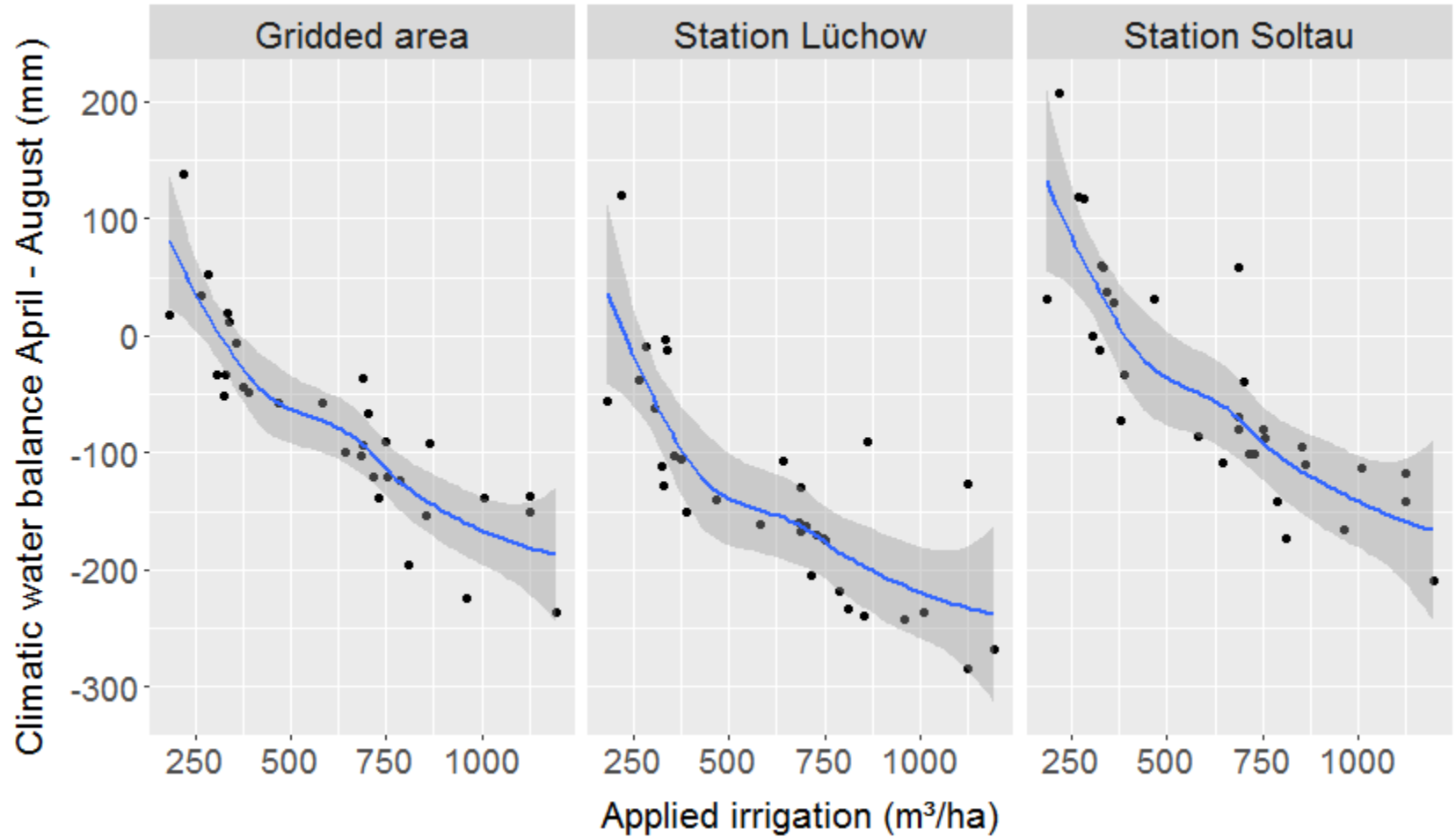
- Depends on specific crop
- Usually based on precipitation (R) and potential evapotranspiration over grass (ET_p):
- Definition: $WB = R - ET_p$
- ET_p derived from agrometeorological model AMBAV (Friesland & Löppmeier 2007)
- Appears to be more meaningful than traditional weather variables
- Not subject of irrigation actually applied in the field!

	Precipitation (R)	Climatic water balance (WB)
Accumulation period	April - August for station/area i	
Weather index	$R_{a,i} = \sum_{m=4}^8 R_m^{a,i}$	$WB_{a,i} = \sum_{m=4}^8 WB_m^{a,i}$
Payoff P	$P_{a,i}^R = \max(R_{a,i} - S_i^R, 0) \cdot V_i^R$	$P_{a,i}^{WB} = \max(WB_{a,i} - S_i^{WB}, 0) \cdot V_i^R$
Strike S & Tick-Size V	Adjusted to maximize risk reduction potential (using OptQuest routine)	
Loading	20 % load of the fair premium	

Results: Accumulated precipitation plotted against applied irrigation



Results: Climatic water balance plotted against applied irrigation



Estimates of a rank-order correlation analysis (according to Spearman):

Weather station / gridded area	Weather indices	
	Accumulated precipitation April-August	Climatic water balance April-August
Station Lüchow	-0.71***	-0.82***
Station Soltau	-0.78***	-0.88***
Gridded area	-0.78***	-0.91***

Note: *** p-value ≤ 0.001

Estimates reveal the % reduction in the standard deviation (SD) and upside semi-standard deviation (Semi-SD) of irrigation costs:

Weather station / gridded area	Weather indices			
	Accumulated precipitation April-August		Climatic water balance April-August	
	SD	Semi-SD	SD	Semi-SD
Station Lüchow	-28.51%	-22.42%	-41.82%	-35.31%
Station Soltau	-32.91%	-31.42%	-51.05%	-47.73%
Gridded area	-37.46%	-35.51%	-55.33%	-52.55%



- Index-based weather insurance has the potential to hedge against volatile irrigation costs
 - Aggregation level: Single farm vs. water user association?
 - Policy instrument?
- Weather indices based on the climatic water balance appears to increase hedging efficiency
- Regionalized gridded data may increase performance of index insurance:
 - Computational burden?
 - Data availability?
 - Use of remote sensing data?
- Adverse ecological effects on input demand: Substitute or compliment?

- Need for further empirical evidence (e.g. Dahlhaus & Finger 2016)
- Collect more data:
 - Effect of aggregation level?
- Make proper use of the whole ‘tool box’:
 - Temporal basis risk?
 - Choice of more sophisticated methods?
 - Look at extreme events (CVAR)
- Estimation of actual insurance demand

Thank you for your attention!



*“Climate is what we expect,
weather is what we get.”
(Mark Twain)*

Contact:
Dr. Matthias Buchholz
Department of Agricultural Economics and Rural Development
University of Goettingen, Germany
mbuchho@gwdg.de

- Buchholz, M., and O. Musshoff (2014), The role of weather derivatives and portfolio effects in agricultural water management, *Agricultural Water Management*, 146, 34–44.
- Dachverband Elbe-Seitenkanal (2014), Irrigated area and corresponding water applications from 1980-2011, Uelzen.
- Dalhaus, T & R. Finger (2016), Can gridded precipitation data and phenological observations reduce basis risk of weather index-based insurance?, *Weather, Climate, and Society*, 8(4), 409-419.
- Finger, R. (2013), Expanding risk consideration in integrated models – The role of downside risk aversion in irrigation decisions, *Environmental Modelling & Software*, 43(3), 169–172.
- Friesland H., Löpmeier F.J. (2007), The performance of the model AMBAV for evapotranspiration and soil moisture on Müncheberg data. In: Kersebaum K.C., Hecker J.M., Mirschel W., Wegehenkel M. (eds) Modelling water and nutrient dynamics in soil-crop systems. Springer, Dordrecht
- Garrido, A., P. Martín-Santos, and M. Llamas (2006), Groundwater irrigation and its implications for water policy in semiarid countries: the Spanish experience, *Hydrogeology Journal*, 14(3), 340–349, doi:10.1007/s10040-005-0006-z.
- German National Meteorological Service (2015), Time series of the climatic water balance in Lower Saxony from 1980-2011, Berlin.
- Kaspar, F, G. Müller-Westermeier, E. Penda, H. Mächel, K. Zimmermann, A. Kaiser-Weiss, and T. Deutschländer (2013), Monitoring of climate change in Germany – data, products and services of Germany's National Climate Data Centre, *Adv. Sci. Res*, 10, 99-106.
- Mafoua, E.K., Turvey, C.G. (2003), *Weather insurance to protect specialty crops against costs of irrigation in drought years*, paper prepared for presentation at the Annual Meeting of the American Agricultural Economics Association, July 27-30, Montreal.
- Rauthe, M, Steiner, H. and U. Mazurkiewicz (2013), A Central European precipitation climatology – Part I: Generation and validation of a high-resolution gridded daily data set (HYRAS), *Meteorologische Zeitschrift*, 22(3), 235-256.
- Richards, T.J., M.R. Manfredo, D.R. Sanders (2004), Pricing Weather Derivatives, *Am J Agric Econ*, 86(4), 1005-1017.
- Turvey, C.G., 2001. Weather derivatives for specific event risks in agriculture, *Review of Agricultural Economics*, 23, 333–351.
- Vedenov, D.V., Barnett, B.J., 2004. Efficiency of weather derivatives as primary crop insurance instruments, *Journal of Agricultural and Resource Economics*, 29, 387–403.
- Woodard, J. D., and P. Garcia (2008), Basis risk and weather hedging effectiveness, *Agricultural Finance Review*, 68(1), 99–117,

Estimates reveal % reduction in the standard deviation (SD) and upside semi-standard deviation (Semi-SD) of irrigation costs:

Weather station / gridded area	Weather / climate indices			
	Accumulated precipitation April-August		Climatic water balance April-August	
	SD	Semi-SD	SD	Semi-SD
Station Lüchow	-	-	-48.43%	-46.76%
Station Soltau	-	-	-44.42%	-47.19%
Gridded area	-	-	-56.24%	-63.67%
Farm site	-	-	-53.70%	-60.66%

Appendix: Histogram of applied irrigation from 1980-2011

