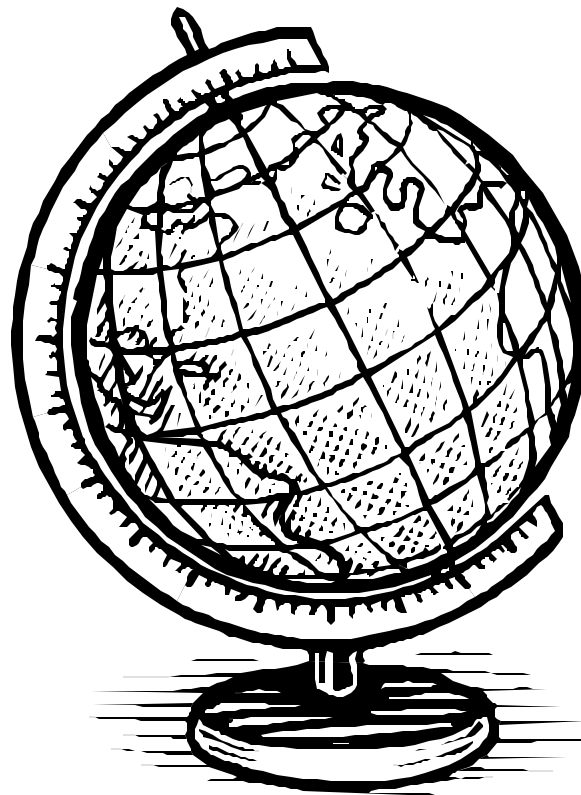


1999 OUTLOOK OF THE U.S. AND WORLD WHEAT INDUSTRIES, 1998-2008

Won W. Koo
Richard D. Taylor



Department of Agricultural Economics ! Agricultural Experiment Station
North Dakota State University ! Fargo, ND 58105-5636

ACKNOWLEDGMENTS

The authors extend appreciation to Timothy Petry, Andrew Swenson, and Joon Park for their constructive comments and suggestions. Special thanks go to Ms. Carol Jensen who helped prepare the manuscript.

We would be happy to provide a single copy of this publication free of charge. You can address your inquiry to: Carol Jensen, Department of Agricultural Economics, North Dakota State University, P.O. Box 5636, Fargo, ND, 58105-5636, Ph. 701-231-7441, Fax 701-231-7400, e-mail cjensen@ndsuxt.nodak.edu . This publication is also available electronically at this web site: <http://agecon.lib.umn.edu/ndsu.html>

NOTICE:

The analyses and views reported in this paper are those of the author. They are not necessarily endorsed by the Department of Agricultural Economics or by North Dakota State University.

North Dakota State University is committed to the policy that all persons shall have equal access to its programs, and employment without regard to race, color, creed, religion, national origin, sex, age, marital status, disability, public assistance status, veteran status, or sexual orientation.

Information on other titles in this series may be obtained from: Department of Agricultural Economics, North Dakota State University, P.O. Box 5636, Fargo, ND 58105. Telephone: 701-231-7441, Fax: 701-231-7400, or e-mail: cjensen@ndsuxt.nodak.edu.

Copyright © 1999 by Won W. Koo and Richard D. Taylor. All rights reserved. Readers may make verbatim copies of this document for non-commercial purposes by any means, provided that this copyright notice appears on all such copies.

TABLE OF CONTENTS

	<u>Page</u>
List of Tables	ii
List of Figures	iii
Abstract	iv
Highlights	v
Introduction	1
Outlook for the World Wheat Industry	1
United States	3
Canada	6
European Union	10
Australia	13
Argentina	13
Importing Countries	18
Asian Importers	18
Former Soviet Union	20
African Region	20
Latin America	20
Concluding Remarks	20
References	25
Appendix	27

LIST OF TABLES

<u>Table</u>		<u>Page</u>
1	Wheat Production, Consumption, Exports, and Carry-over Stocks in the United States	3
2	Wheat Production, Consumption, Exports, and Carry-over Stocks in Canada	6
3	Wheat Production, Consumption, Exports, and Carry-over Stocks in the European Union	10
4	Wheat Production, Consumption, Exports, and Carry-over Stocks in Australia	13
5	Wheat Production, Consumption, Exports, and Carry-over Stocks in Argentina	13
6	Imports of Common and Durum Wheat by Major Importing Countries	18

LIST OF FIGURES

<u>Figure</u>		<u>Page</u>
1	World Wheat Trade, 1996 to 2008	2
2	U.S. Wheat Export Prices, 1996 to 2008	4
3	U.S. Wheat Production, 1996 to 2008	5
4	U.S. Domestic Wheat Consumption, 1996 to 2008	7
5	U.S. Wheat Export, 1996 to 2008	8
6	U.S. Wheat Ending Stocks, 1996 to 2008	9
7	Canadian Western Red Spring Wheat Production and Utilization, 1996 to 2008	11
8	Canadian Western Amber Durum Wheat Production and Utilization, 1996 to 2008	12
9	E.U. Common Wheat Production and Utilization, 1996 to 2008	14
10	E.U. Durum Wheat Production and Utilization, 1996 to 2008	15
11	Australia Common Wheat Production and Utilization, 1996 to 2008	16
12	Argentina Common Wheat Production and Utilization, 1996 to 2008	17
13	Common Wheat Imports by Major Asian Countries, 1996 to 2008	19
14	Common and Durum Wheat Imports by Former Soviet Union, 1996 to 2008	21
15	Common and Durum Wheat Imports by Major African Countries, 1996 to 2008	22
16	Common and Durum Wheat Imports by Latin American Countries, 1996 to 2008	23

ABSTRACT

This report evaluates the U.S. and world wheat markets for the 1998-2008 period by using the World Wheat Policy Simulation Model. This analysis is based on a series of assumptions about general economic conditions, agricultural policies, the weather, and technological change.

Both the U.S. and world wheat economies are predicted to be optimistic for the next ten years. World demands for both common and durum wheat are expected to grow faster than world production of the two wheat classes, resulting in gradual increases in prices of the wheats. World trade volumes of both classes of wheat are expected to expand, but trade volume of durum wheat may grow faster than common wheat.

Key words: Common Wheat, Durum Wheat, Production, Exports, Consumption, Ending Stocks

HIGHLIGHTS

Total world wheat trade is projected to increase by 16.3% from 89.3 million metric tons in 1998 to 103.9 million metric tons in 2008.

Production of all wheat classes except durum wheat in the United States is predicted to increase for the 1998-2008 period mainly because of the large durum production in 1998. The largest increase in production occurs for U.S. white wheat, followed by HRW wheat.

U.S. consumption of durum wheat is expected to grow faster than consumption of other wheats for the 1998-2008 period, mainly because of the increasing popularity of pasta products in the United States.

U.S. common wheat exports are predicted to be strong for the 1998-2008 period while durum exports are predicted to decrease.

Production of both Canadian western red spring (CWRS) and western amber durum (CWAD) wheat is predicted to increase for the 1998-2008 period. However, CWAD wheat production will grow faster than CWRS wheat production.

Domestic consumption of CWRS and CWAD wheat is predicted to increase for the 1998-2008 period. CWRS wheat exports are projected to increase faster than CWAD wheat exports.

Common wheat production in the European Union (E.U.) is predicted to increase by 12.7% from 1998 to 2008, while durum wheat production increases by 0.4%. Exports of both wheat classes are predicted to decrease substantially.

Australia's wheat production will grow by 30.2% over the 1998-2008 period. Domestic wheat consumption will increase 1.7% from 5.3 million metric tons in 1998 to 5.4 million metric tons in 2008. Wheat exports also will increase substantially from 15.0 million metric tons in 1998 to 22.4 million metric tons in 2008.

Argentine wheat production is projected to increase 34.1% from 10.5 million metric tons in 1998 to 14.1 million metric tons in 2008. Domestic wheat consumption will increase 16.2% from 4.8 million metric tons to 5.6 million metric tons for the period. Wheat exports will increase substantially from 6.0 million metric tons in 1998 to 9.7 million metric tons in 2008.

For the 1998-2008 period, the United States will be the largest wheat exporter, followed by Canada. Australia will be the third largest exporter.

Most importing countries are predicted to increase their imports for both common and durum wheat. Among those countries, import demand for common wheat from China and Morocco will grow

faster than from other countries. Import demand for durum wheat from the Former Soviet Union, Algeria, Tunisia, and Venezuela is predicted to grow faster than common wheat.

1999 OUTLOOK OF THE U.S. AND WORLD WHEAT INDUSTRIES, 1998-2008

Won W. Koo and Richard D. Taylor*

INTRODUCTION

This report evaluates the U.S. and world wheat industries for the 1998-2008 period by using the World Wheat Policy Simulation Model developed by Benirschka and Koo. The outlook projection is based on an assumption that current farm and trade policies adopted by wheat exporting and importing countries are unchanged. Assumptions associated with macroeconomic variables, such as GDP growth rates, interest rates, inflation rates, exchange rates, and consumer price indices in the United States and other countries, are based on forecasts prepared by the WEFA Group and Project LINK. Average weather conditions and historical rates of technological change are also assumed to prevail during the projection period.

Wheat is a differentiated product. Substitution among wheat classes is imperfect, and consumer preferences differ among countries, suggesting that wheat characteristics are an important determinant of trade flows. The World Wheat Policy Simulation Model is a partial equilibrium model that distinguishes eight classes of wheat. The wheat classes are Argentine wheat, Australian soft wheat (ASW), Canadian western red spring (CWRS), Canadian western amber durum (CWAD) wheat, European Union (E.U.) common wheat, E.U. durum wheat, U.S. common wheat, and U.S. hard amber durum wheat. U.S. common wheat is further divided into four classes; hard red winter (HRW), hard red spring (HRS), soft red winter (SRW), and white wheat.

The model contains 5 exporting countries (Argentina, Australia, Canada, the United States, and the E.U.) and 13 importing countries and regions (Algeria, Brazil, China, Egypt, the Former Soviet Union (FSU), Japan, Mexico, Morocco, South Korea, Taiwan, Tunisia, Venezuela, and a Rest of the World region). The model simulates production, consumption, stocks, exports, and trade flows for wheat classes over a 10-year period. The model is solved for a set of equilibrium wheat prices in which demand for each wheat class equals supply for every year. The model is linked to the Food Agricultural Policy Research Institute (FAPRI) model and uses the predicted prices of all agricultural commodities, except wheat, from the model. The model is used to project supply and demand conditions for 1998 to 2008. Thus, 1999 is the base year of the simulation.

OUTLOOK FOR THE WORLD WHEAT INDUSTRY

Total world wheat trade is projected to increase by 16.3% from 89.3 million metric tons in 1998 to 103.9 million metric tons in 2008 (Figure 1). Except for E.U. common wheat and U.S. durum, trade of all wheat classes will increase for the 1998-2008 period. The E.U. exports will decrease, mainly because reductions in E.U. subsidies under WTO will make E.U. wheat production less competitive. Common wheat production in Argentina is predicted to increase faster than in other countries.

*Professor and research associate, respectively, in the Department of Agricultural Economics, North Dakota State University, Fargo.

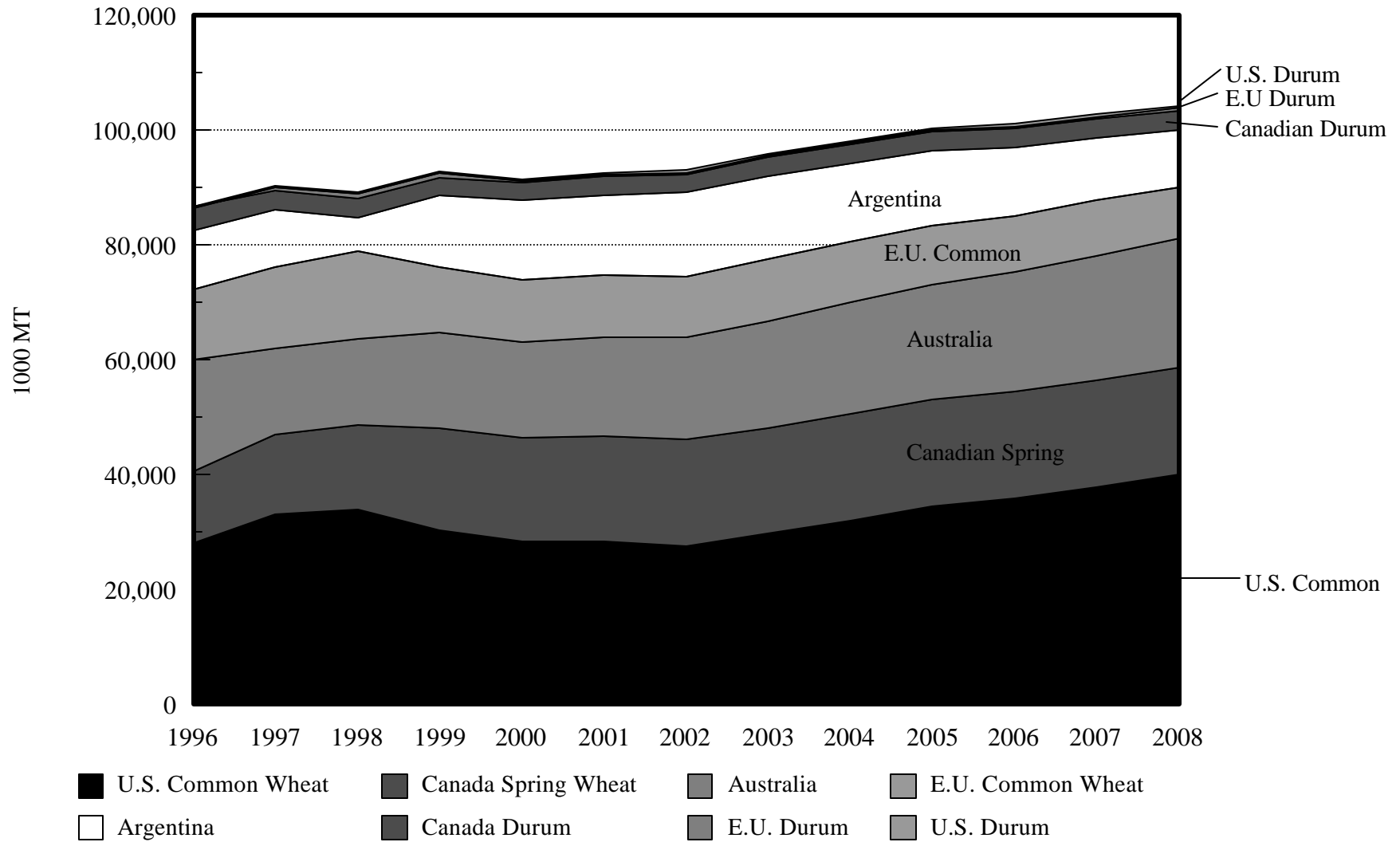


Figure 1. World Wheat Trade, 1996 to 2008

The wheat export price of U.S. common wheat is projected to increase gradually, 39.4%, from \$97.0 per metric ton in 1998 to \$135.2 per metric ton in 2008 (Figure 2). The price of U.S. durum wheat is projected to increase from \$105.8 per metric ton in 1998 to \$153.9 per metric ton in 2008.

United States

Table 1 shows wheat production, consumption, exports, and ending stocks in the United States. Total U.S. wheat production will grow by 15.5% from 1998 to 2008. Production of each class of wheat in 1998 is slightly smaller than the 3-year average production of the wheat class except for HRS and durum. For the 1998-2008 period, the largest increases in production occur for U.S. white wheat (19.9%), followed by HRW wheat (17.9%), and HRS (15.0%). U.S. SRW wheat production increases by only 8.7% and durum wheat production decreases 1.6%. However, durum wheat production in 2008 is larger than the 3-year average production. The United States had a large production of durum wheat in 1998. Changes in production of different classes of wheat are shown in Figure 3. For all classes of wheat, except for durum produced in the United States, production will increase throughout the forecast period.

Total wheat harvested area will increase from 69.2 million acres in 1998 to 75.8 million acres in 2008 and average yields will increase from 42.9 bushels per acre to 45.9 bushels per acre. Hard red spring wheat area will increase 2.2 million acres, and U.S. durum area will remain level.

Table 1. Wheat Production, Consumption, Exports, and Carry-over Stocks in the United States

	Average (1996-1998)	1998	2008	% Change (1998-2008)
-----thousand metric tons-----				
<u>Production</u>				
Common	64,749	63,189	73,083	15.7
White	9,364	9,068	10,874	19.9
SRW	13,284	12,144	13,204	8.7
HRW	25,951	25,226	29,737	17.9
HRS	15,949	16,751	19,269	15.0
Durum	2,873	3,113	3,064	-1.6
<u>Consumption</u>				
Common	28,852	29,014	31,937	10.1
Durum	2,372	2,354	2,694	14.4
<u>Exports</u>				
Common	31,676	33,877	40,084	18.3
Durum	390	381	372	-2.1
<u>Carry over</u>				
Common	13,463	14,000	13,550	-3.0
Durum	844	1,034	996	-3.7

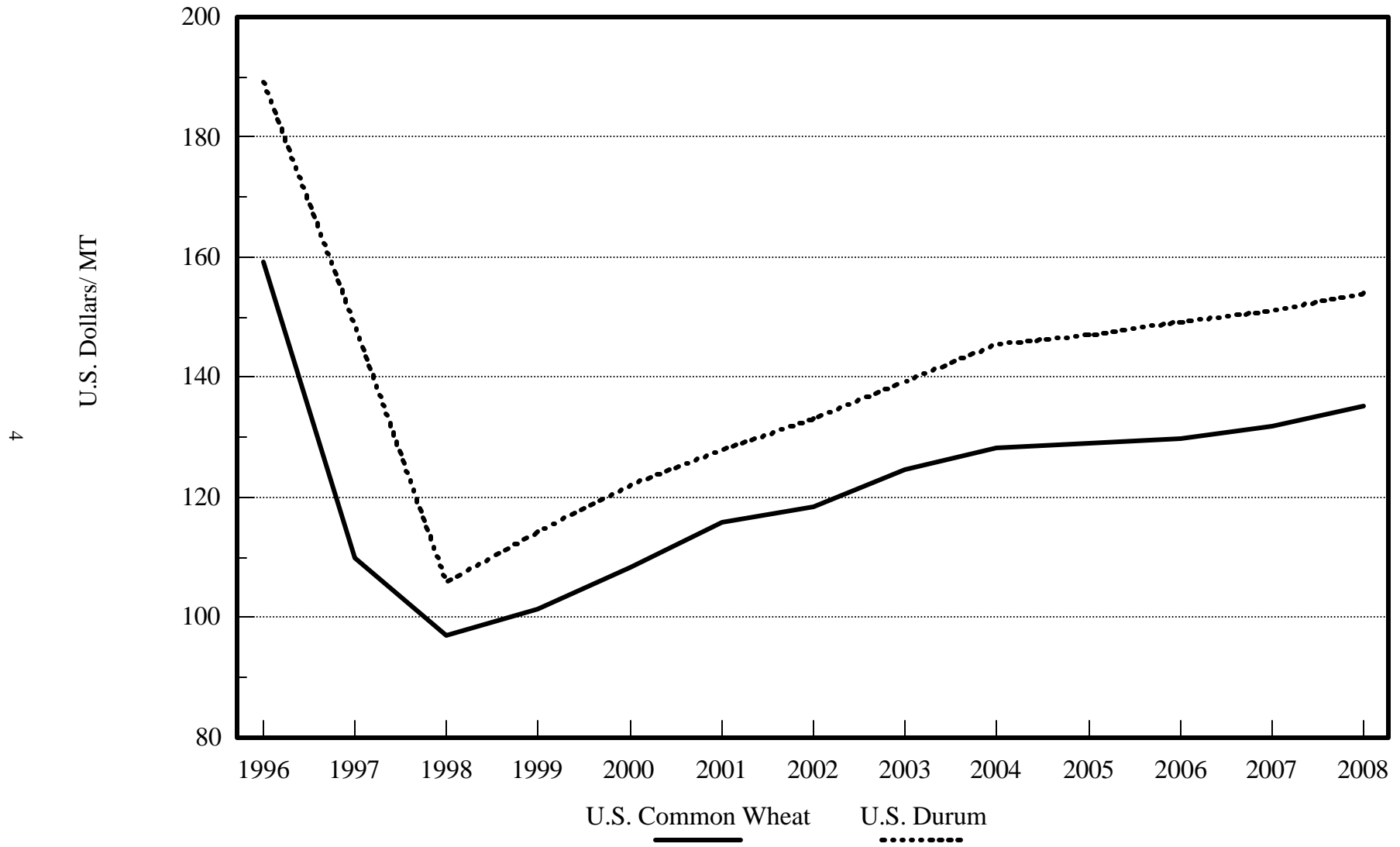


Figure 2. U.S. Wheat Export Prices, 1996 to 2008

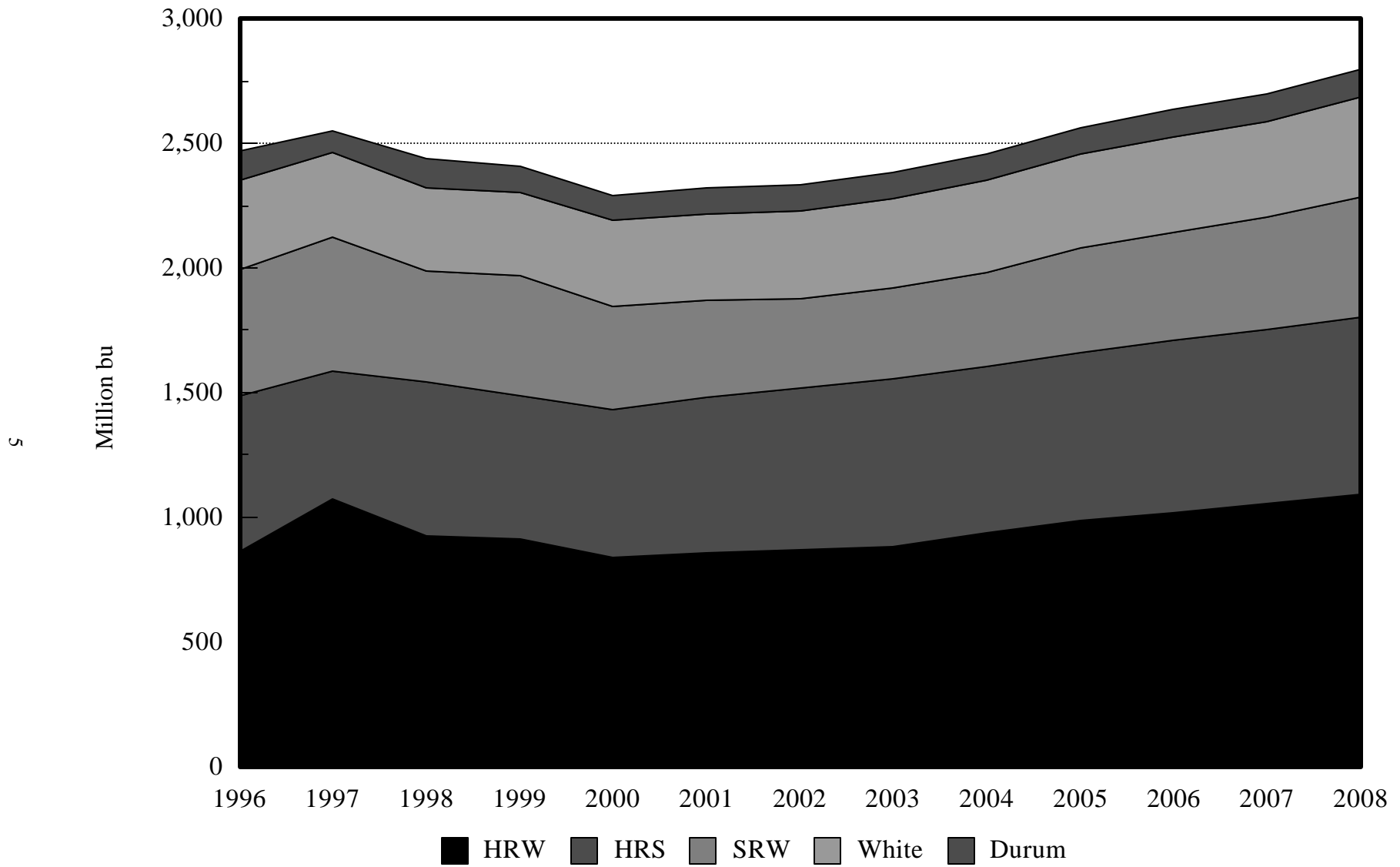


Figure 3. U.S. Wheat Production, 1996 to 2008

U.S. wheat consumption is projected to grow 10.1% for common wheat and 14.4% for U.S. durum wheat for the 1998-2008 period (Figure 4). Durum consumption is expected to grow faster because of the popularity of pasta products in the United States.

U.S. durum exports are projected to decrease 2.1% from 381 thousand metric tons in 1998 to 372 thousand metric tons to 2008, which is 4.6% lower than the 3-year average export from 1996 to 1998. Common wheat exports are predicted to increase gradually from 33.9 million metric tons in 1998 to 40.1 million metric tons in 2008 (Figure 5).

Ending stocks are expected to decrease for both common and durum wheat. Total ending stocks for common wheat are predicted to decrease by 3.0% from 1998 to 2008 and decrease 3.7% for durum wheat (Figure 6).

Canada

The predicted production, consumption, exports, and carry-over stocks of CWRS and CWAD wheat in 1998 are larger than the 3-year averages of the two wheat classes (Table 2). For the 1998-2008 period, Canadian WRS and WAD wheat production increase by 1.0% and 11.9%, respectively. Total area for WRS wheat decreases from 11.5 million hectares in 1998 to 11.1 million hectares in 2008, while WAD wheat area remains level at 1.8 million hectares.

Domestic consumption of WRS and WAD wheat will increase by 17.7% and 10.3%, respectively, for the 1998-2008 period. Canadian WRS wheat exports are projected to increase 26.1% by 2008. However, WAD wheat exports are predicted to increase by only 8.8% from 3.2 million metric tons in 1998 to 3.5 million metric tons by 2008.

Ending stocks are predicted to increase 15.0% for WRS wheat and decrease 1.0% for WAD wheat for the 1998-2008 period.

Table 2. Wheat Production, Consumption, Exports, and Carry-over Stocks in Canada

	Average (1996-1998)	1998	2008	% Change (1998-2008)
-----thousand metric tons-----				
<u>Production</u>				
WRS	25,279	26,565	26,829	1.0
WAD	4,231	4,152	4,648	11.9
<u>Consumption</u>				
WRS	6,899	6,940	8,169	17.7
WAD	1,056	1,072	1,183	10.3
<u>Exports</u>				
WRS	13,767	14,800	18,659	26.1
WAD	3,553	3,180	3,459	8.8
<u>Carry over</u>				
WRS	1,668	1,141	1,312	15.0
WAD	1,099	839	830	-1.0

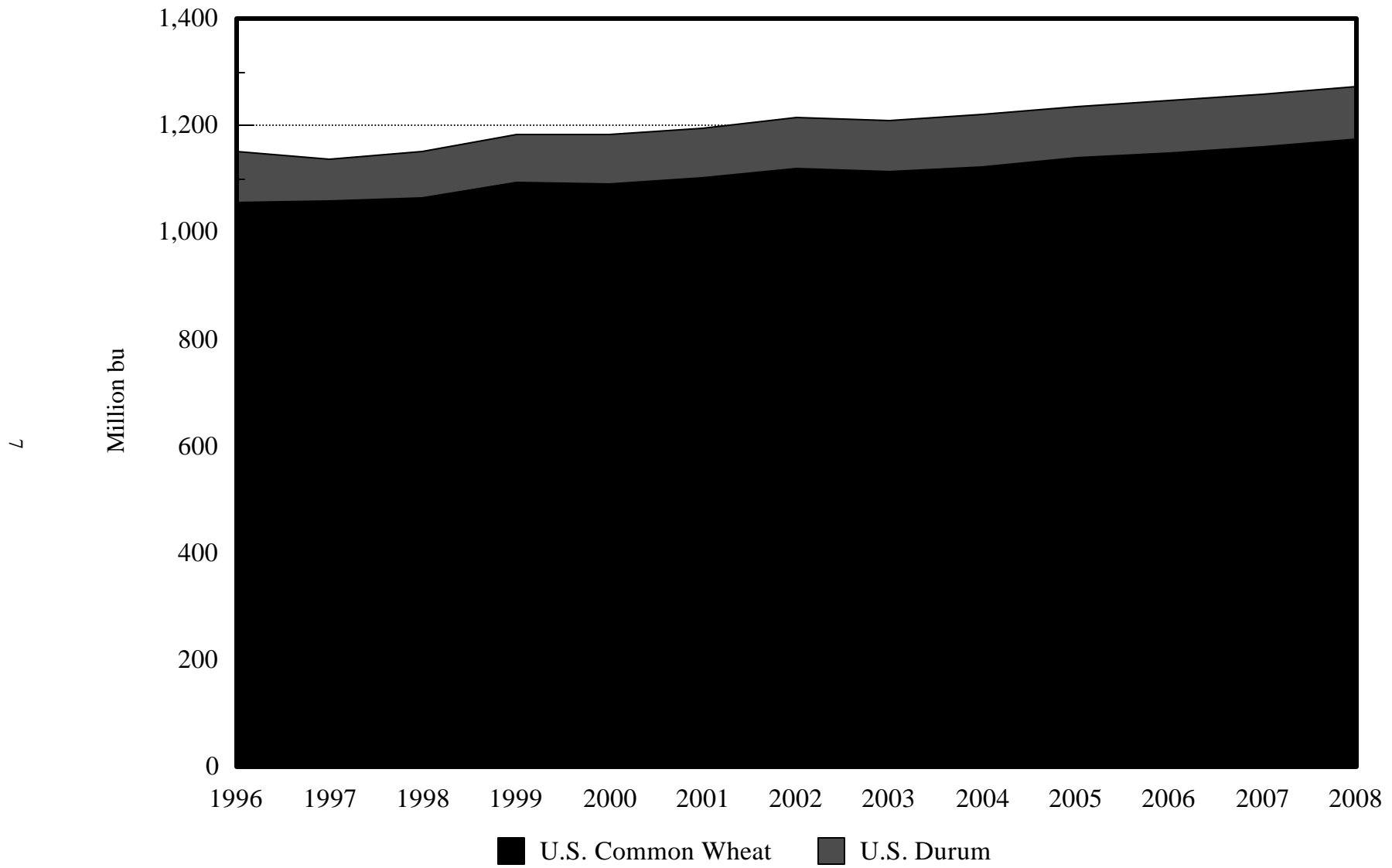


Figure 4. U.S. Domestic Wheat Consumption, 1996-2008

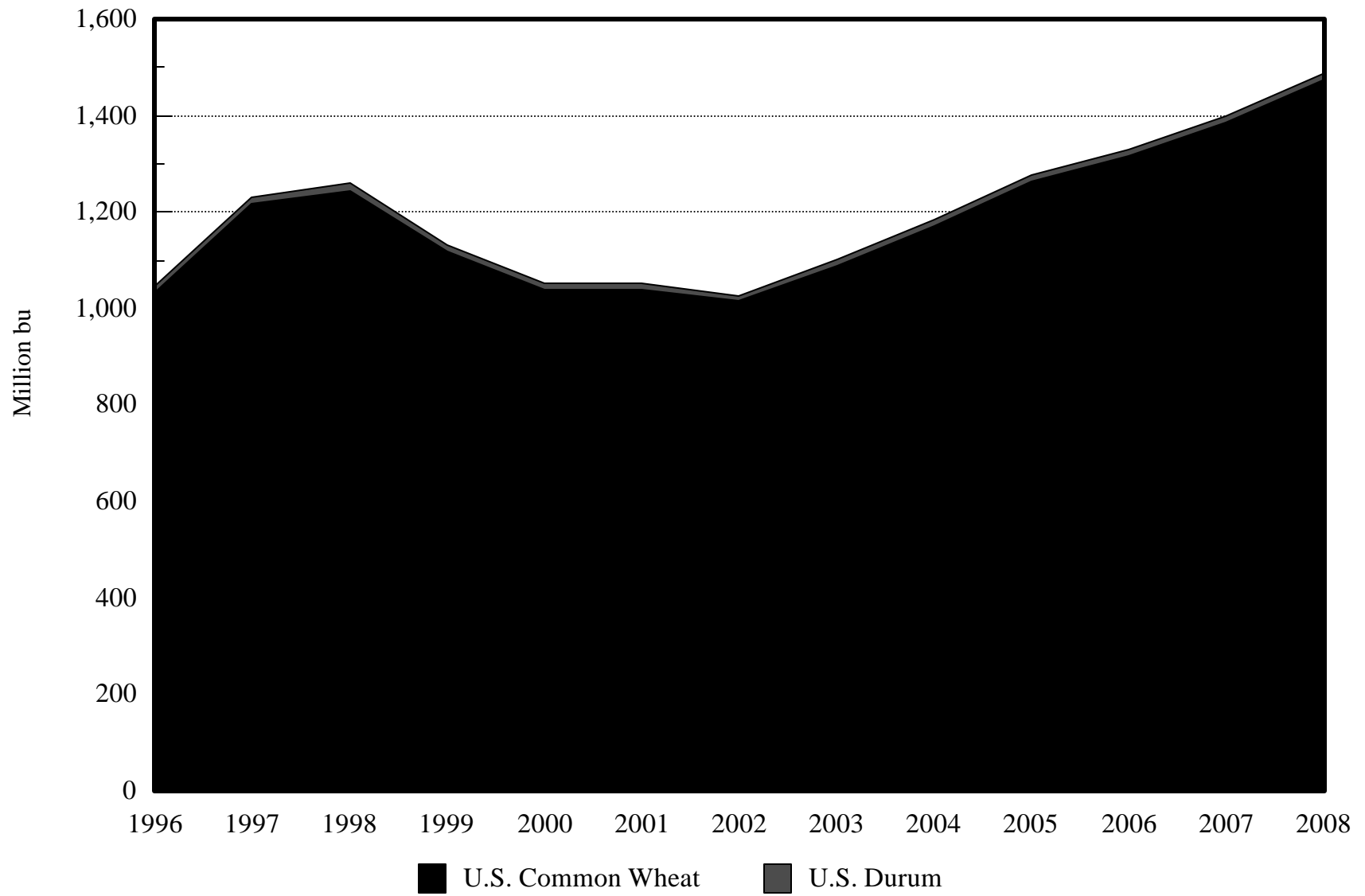


Figure 5. U.S. Wheat Exports, 1996 to 2008

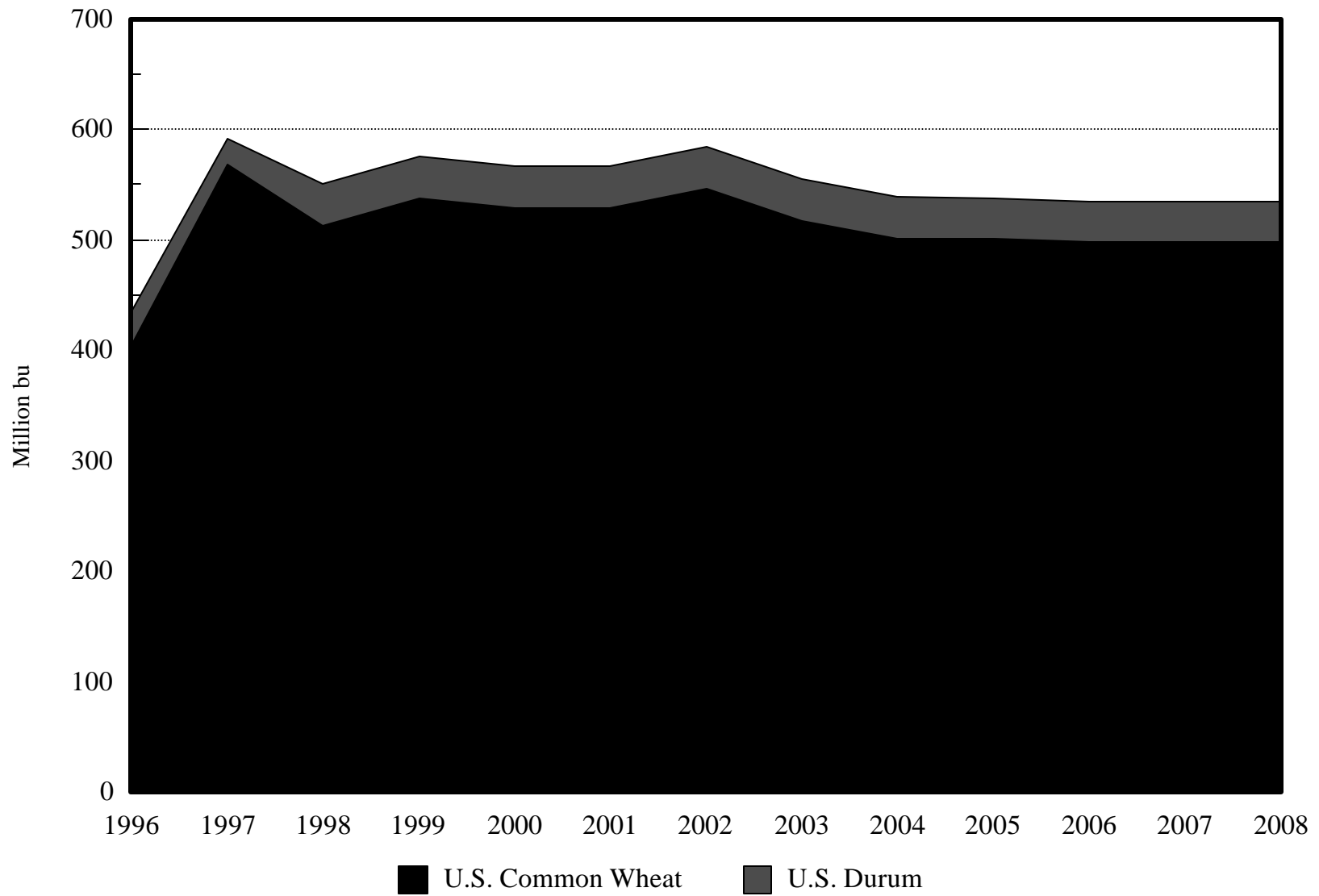


Figure 6. U.S. Wheat Ending Stocks, 1996 to 2008

Figure 7 shows changes in production, consumption, exports, and ending stocks of WRS wheat in Canada from 1996 to 2008. Consumption, exports, and ending stock of WRS wheat will increase gradually throughout the period. For WAD wheat, production, consumption, and exports will increase gradually. However, the rate of increase for production is slower than that for consumption and exports (Figure 8).

European Union

Table 3 presents production, consumption, exports, and ending stocks of common and durum wheat in the E.U. for the 1998-2008 period. Common wheat production in the E.U. will increase by 11.5% from 1998 to 2008, while durum wheat production will increase by only 1.6%.

Domestic consumption of common wheat is projected to increase 12.7% from 70.1 million metric tons in 1998 to 79.1 million metric tons in 2008. However, consumption of durum wheat is predicted to be unchanged. Exports of both wheat classes are predicted to decrease substantially: 42.1% for common wheat and 46.9% for durum wheat. Ending stocks for common wheat will increase, while those for durum wheat will decrease.

Table 3. Wheat Production, Consumption, Exports, and Carry-over Stocks in the European Union

	Average (1996-1998)	1998	2008	% Change (1998-2008)
-----thousand metric tons-----				
<u>Production</u>				
Common	84,080	80,055	89,262	11.5
Durum	8,061	8,132	8,259	1.6
<u>Consumption</u>				
Common	69,561	70,115	79,059	12.7
Durum	7,933	7,800	7,835	0.4
<u>Exports</u>				
Common	13,901	15,283	8,841	-42.1
Durum	333	800	425	-46.9
<u>Carry over</u>				
Common	14,684	11,841	13,271	12.1
Durum	1,578	2,533	1,612	-36.4

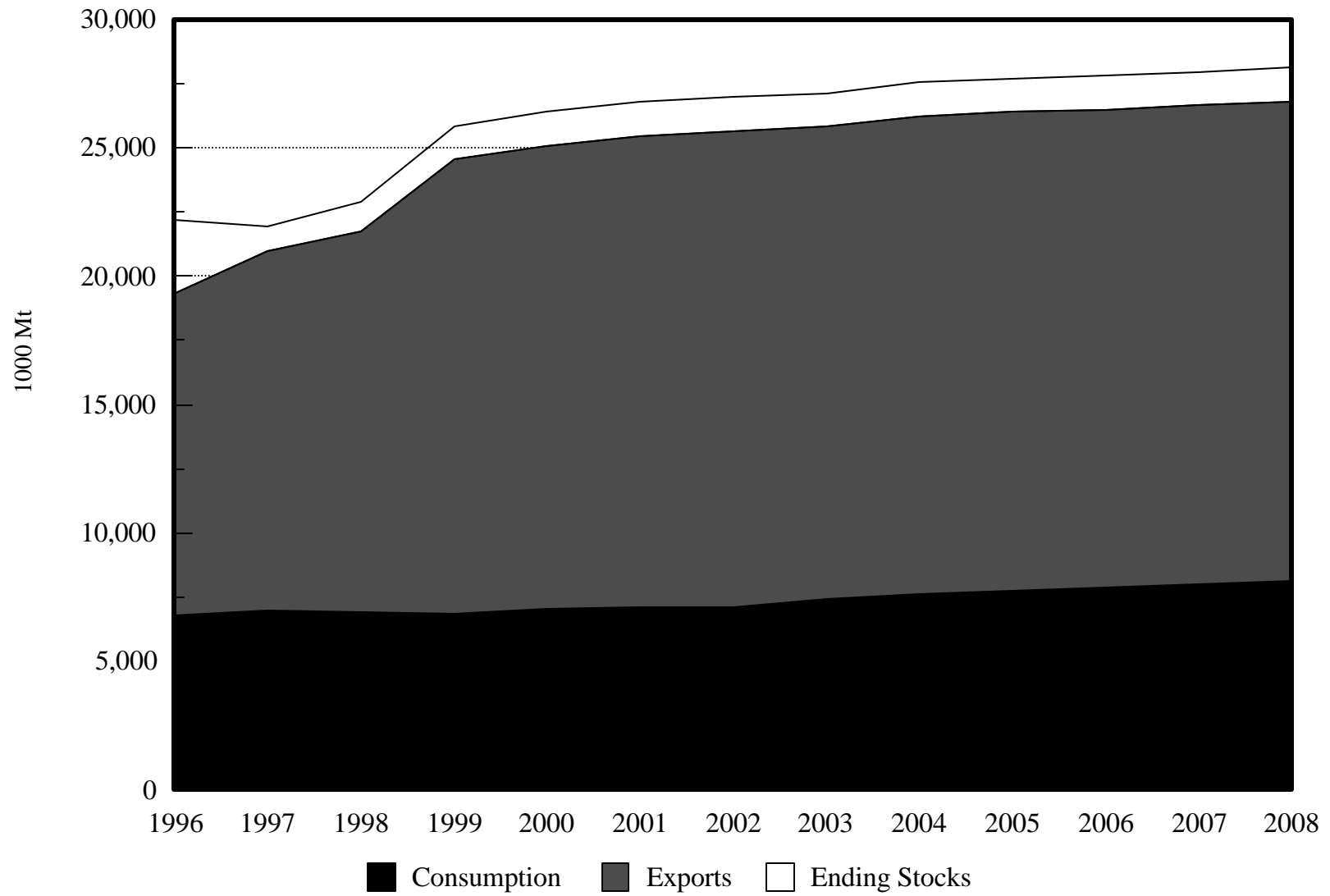


Figure 7. Canadian Western Red Spring Wheat Production and Utilization, 1996 to 2008

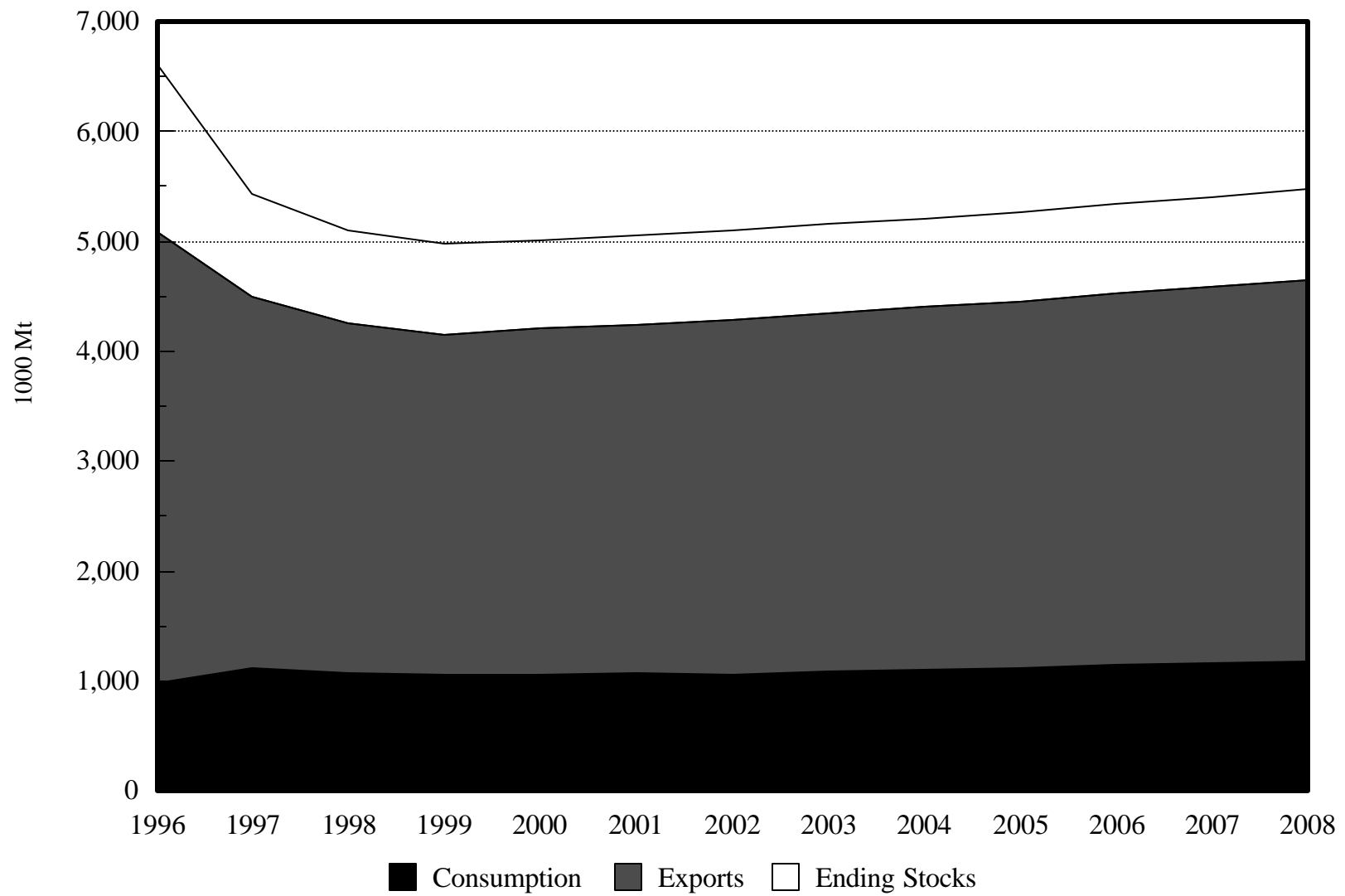


Figure 8. Canadian Western Amber Durum Wheat Production and Utilization, 1996 to 2008

Figures 9 and 10 show changes in production, consumption, exports, and ending stocks of common and durum wheat for the 1996-2008 period. For common wheat, production, consumption, and ending stocks will increase gradually, while exports will decrease. Production and consumption of durum wheat will increase for the period, while exports and ending stocks will remain unchanged.

Australia

Australia's wheat production is projected to grow by 30.2% over the 1998-2008 period (Table 4). Yields will increase gradually at the historical trend line, while wheat area will increase 23.1%. Domestic wheat consumption will increase 1.7% from 5.2 million metric tons in 1998 to 5.4 million metric tons in 2008. Wheat exports also will increase substantially from 15.0 million metric tons in 1998 to 22.4 million metric tons in 2008. Because of increases in domestic consumption and exports, ending stocks are predicted to decrease 17.3%. Figure 11 shows changes in consumption, exports, and ending stocks for the 1996-2008 period.

Table 4. Wheat Production, Consumption, Exports, and Carry-over Stocks in Australia

	Average (1996-1998)	1998	2008	% Change (1998-2008)
	-----thousand metric tons-----			
Production	21,705	22,035	28,691	30.2
Consumption	4,755	5,271	5,360	1.7
Exports	16,463	14,970	22,423	49.8
Carry over	2,987	3,998	3,307	-17.3

Argentina

Argentine production is projected to increase 34.1% from 10.5 million metric tons in 1998 to 14.1 million metric tons in 2008 (Table 5). Wheat area will increase from 5.1 million hectares in 1998 to 5.9 million hectares in 2008. Domestic wheat consumption will increase 16.2% from 4.8 million metric tons to 5.6 million metric tons. Wheat exports will increase substantially from 6.0 million metric tons in 1998 to 9.7 million metric tons in 2008, a 62.1% increase. Ending stocks also will increase 16.5%. Figure 12 shows changes in consumption, exports, and ending stocks for the 1996-2008 period.

Table 5. Wheat Production, Consumption, Exports, and Carry-over Stocks in Argentina

	Average (1996-1998)	1998	2008	% Change (1998-2008)
	-----thousand metric tons-----			
Production	13,735	10,481	14,051	34.1
Consumption	4,938	4,833	5,617	16.2
Exports	8,705	5,968	9,676	62.1
Carry over	640	400	466	16.5

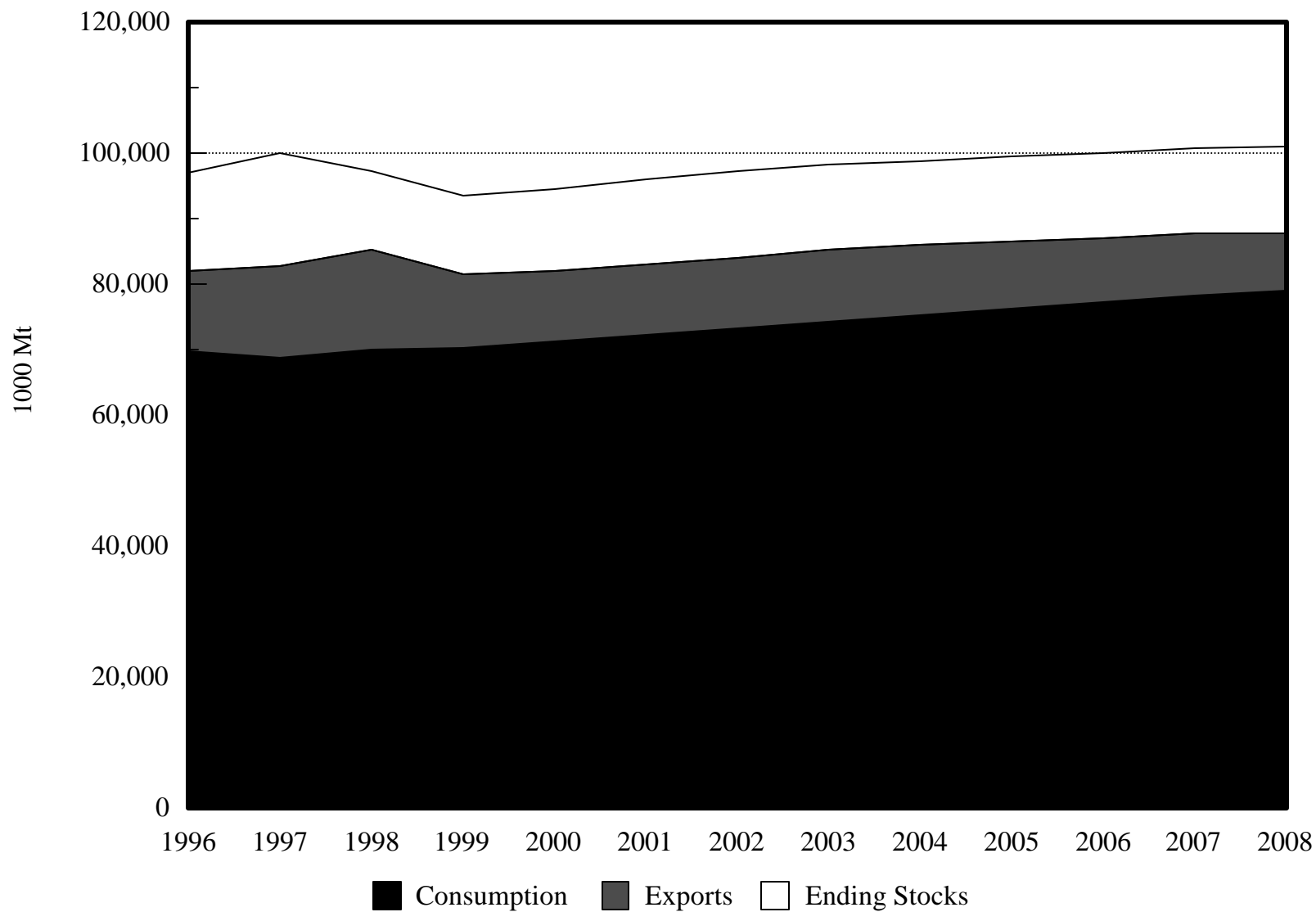


Figure 9. E.U. Common Wheat Production and Utilization, 1996 to 2008

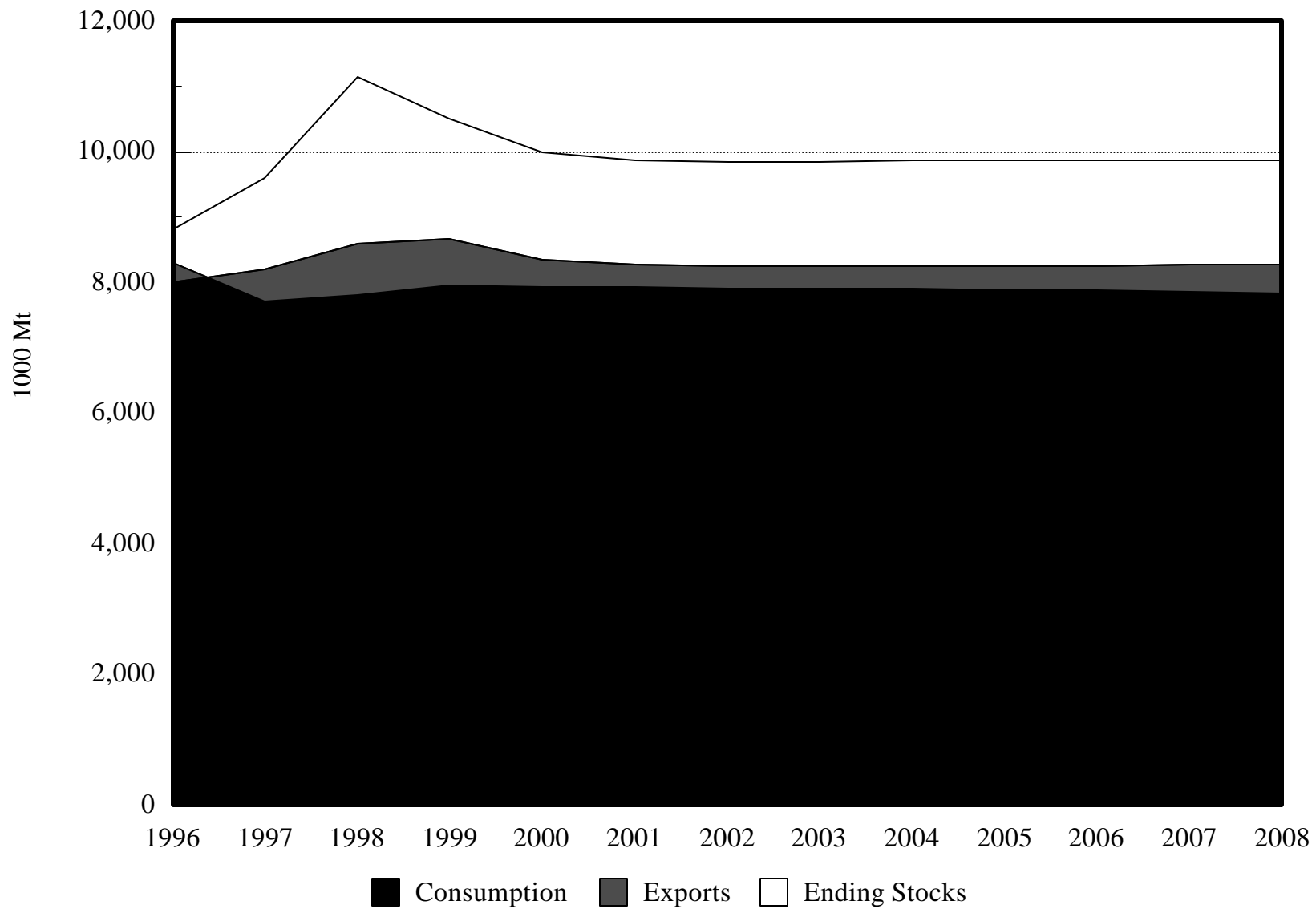


Figure 10. E.U. Durum Wheat Production and Utilization, 1996 to 2008

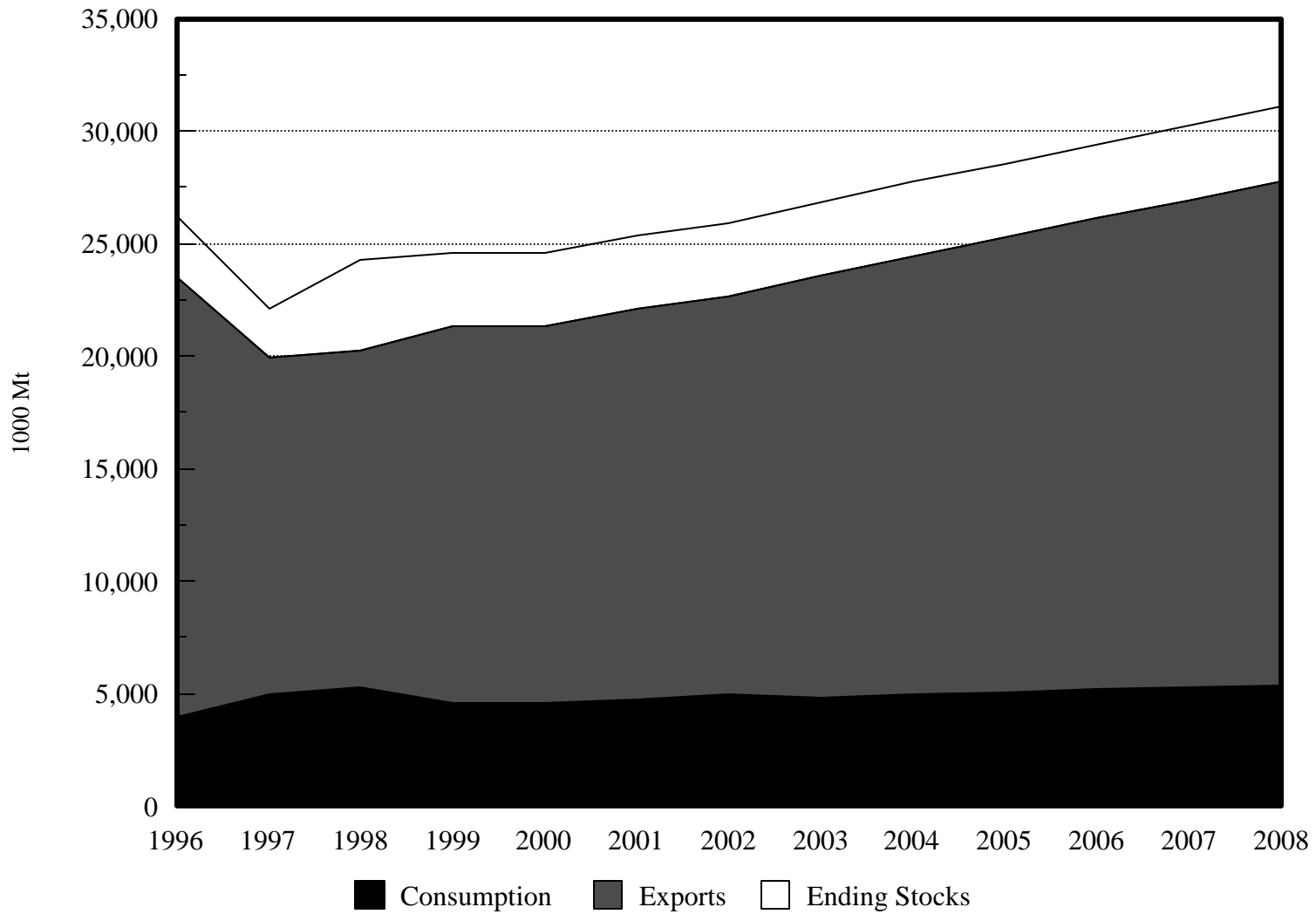


Figure 11. Australia Common Wheat Production and Utilization, 1996 to 2008

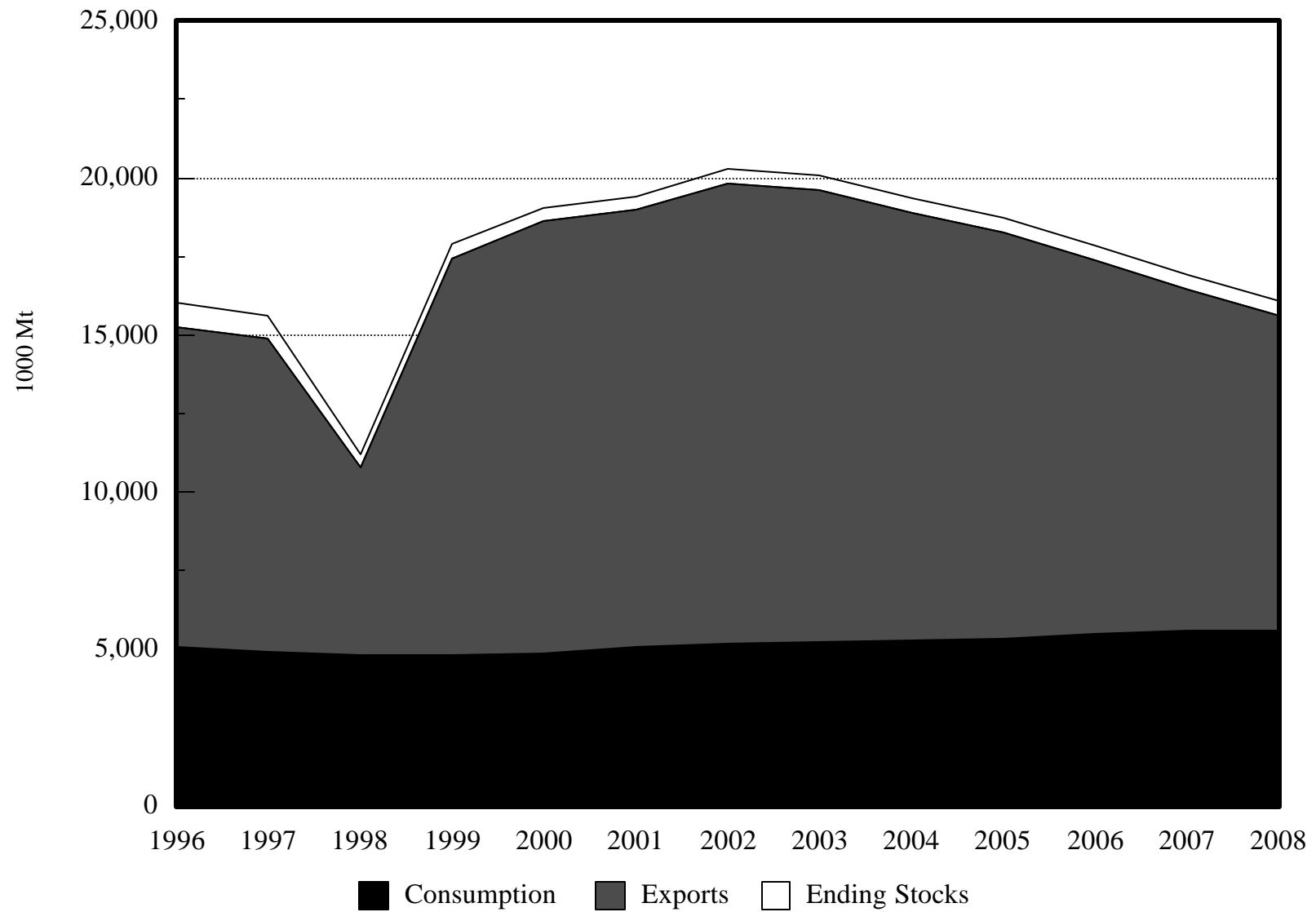


Figure 12. Argentina Common Wheat Production and Utilization, 1996 to 2008

Importing Countries

Importing countries are grouped into the Asian region (China, Japan, Korea, and Taiwan), the African region (Algeria, Egypt, Morocco, and Tunisia), Latin America (Mexico, Brazil, and Venezuela), and the FSU (Table 6).

Table 6. Imports of Common and Durum Wheat by Major Importing Countries

Wheat Class	Average (1996-98)	1998	2008	% Change (1998-2008)
-----thousand metric tons-----				
<u>Former Soviet Union</u>				
Common	2,483	3,050	3,075	0.8
Durum	20	20	25	25.0
<u>Southeast Asia Common Wheat</u>				
China	1,601	2,000	3,294	64.7
Korea	3,462	3,004	3,783	25.9
Japan	6,155	6,000	6,479	8.0
Taiwan	1,028	1,000	1,186	18.6
<u>North Africa</u>				
Algeria Common	2,983	3,100	3,627	17.0
Algeria Durum	1,750	1,500	2,201	46.8
Morocco Common	1,913	1,470	1,982	34.8
Egypt Common	7,182	7,400	8,296	12.1
Tunisia Common	932	800	919	14.9
Tunisia Durum	310	400	484	21.0
<u>Latin America</u>				
Brazil Common	5,728	5,918	6,774	14.5
Mexico Common	2,037	2,270	2,786	22.7
Venezuela Common	894	950	1,108	16.6
Venezuela Durum	332	325	424	30.5

Asian Importers

Asian imports of wheat are projected to increase 22.1% between 1998 and 2008. Chinese imports of common wheat are projected to increase 64.7% from 2.0 million metric tons to 3.3 million metric tons for the 1998-2008 period. Japan's, Korea's, and Taiwan's imports are projected to increase 8.0%, 25.9%, and 18.6%, respectively, for the 1998-2008 period (Figure 13).

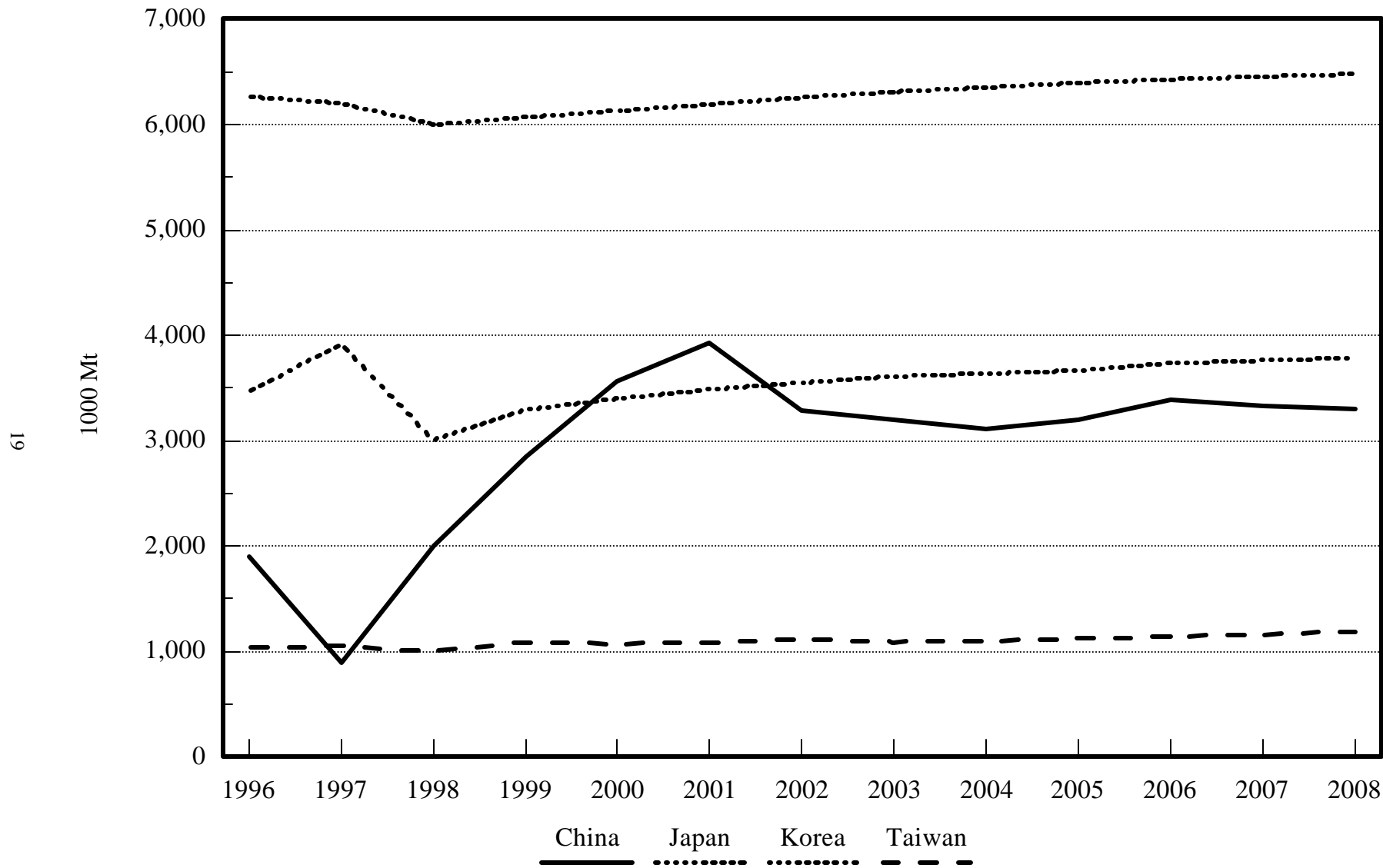


Figure 13. Common Wheat Imports by Major Asian Countries, 1996 to 2008

Former Soviet Union

Total imports of wheat are projected to increase by 0.8% between 1998 and 2008 in the FSU. Imports of durum wheat are projected to increase by 25.0%, while imports of common wheat are projected to increase 0.8% from 1998 to 2008 (Figure 14).

African Region

North African imports of wheat are projected to increase 19.4% between 1998 and 2008. Egyptian imports of common wheat are projected to increase 12.1% from 7.4 million metric tons to 8.3 million metric tons between 1998 and 2008. Algeria imports both common wheat and durum wheat. Algerian imports of common wheat are projected to increase 17.0% from 3.1 million metric tons in 1998 to 3.6 million metric tons in 2008, and durum wheat imports are projected to increase 46.8% from 1.5 million metric tons to 2.2 million metric tons. Morocco's imports of common wheat are projected to increase 34.8% from 1.5 million metric tons to 2.0 million metric tons. Tunisia imports both common wheat and durum wheat. Tunisian imports of common wheat are projected to increase 14.9% from 0.8 million metric tons to 0.9 million metric tons between 1998 and 2008. Its durum wheat imports are projected to increase 21.0% from 0.4 million metric tons to 0.5 million metric tons between 1998 and 2008 (Figure 15).

Latin America

Mexican imports are projected to increase 22.7% from 2.3 million metric tons to 2.8 million metric tons between 1998 and 2008. Venezuela imports both common and durum wheat. Common wheat imports are projected to increase 16.6% from 1.0 million metric tons in 1998 to 1.1 million metric tons in 2008, and durum wheat imports are projected to increase 30.5% from 0.3 million metric tons to 0.4 million metric tons (Figure 16). Brazilian imports are projected to increase 14.5% from 5.9 million metric tons in 1998 to 6.8 million metric tons in 2008.

CONCLUDING REMARKS

This report evaluates the U.S. and world wheat industries for the 1998-2008 period by using the World Wheat Policy Simulation Model which is operational at North Dakota State University. The baseline projections are based on a series of assumptions about the general economy, agricultural policies, the weather, and technological changes.

World wheat trade is projected to increase by 16.3% from 89.3 million metric tons in 1998 to 103.9 million metric tons in 2008. Common wheat trade is expected to grow faster than durum wheat trade. Because of the financial crisis in South and Southeast Asian countries, their import demand for common wheat is expected to be weak for the next two-three years, but it is expected to recover later in the forecast period.

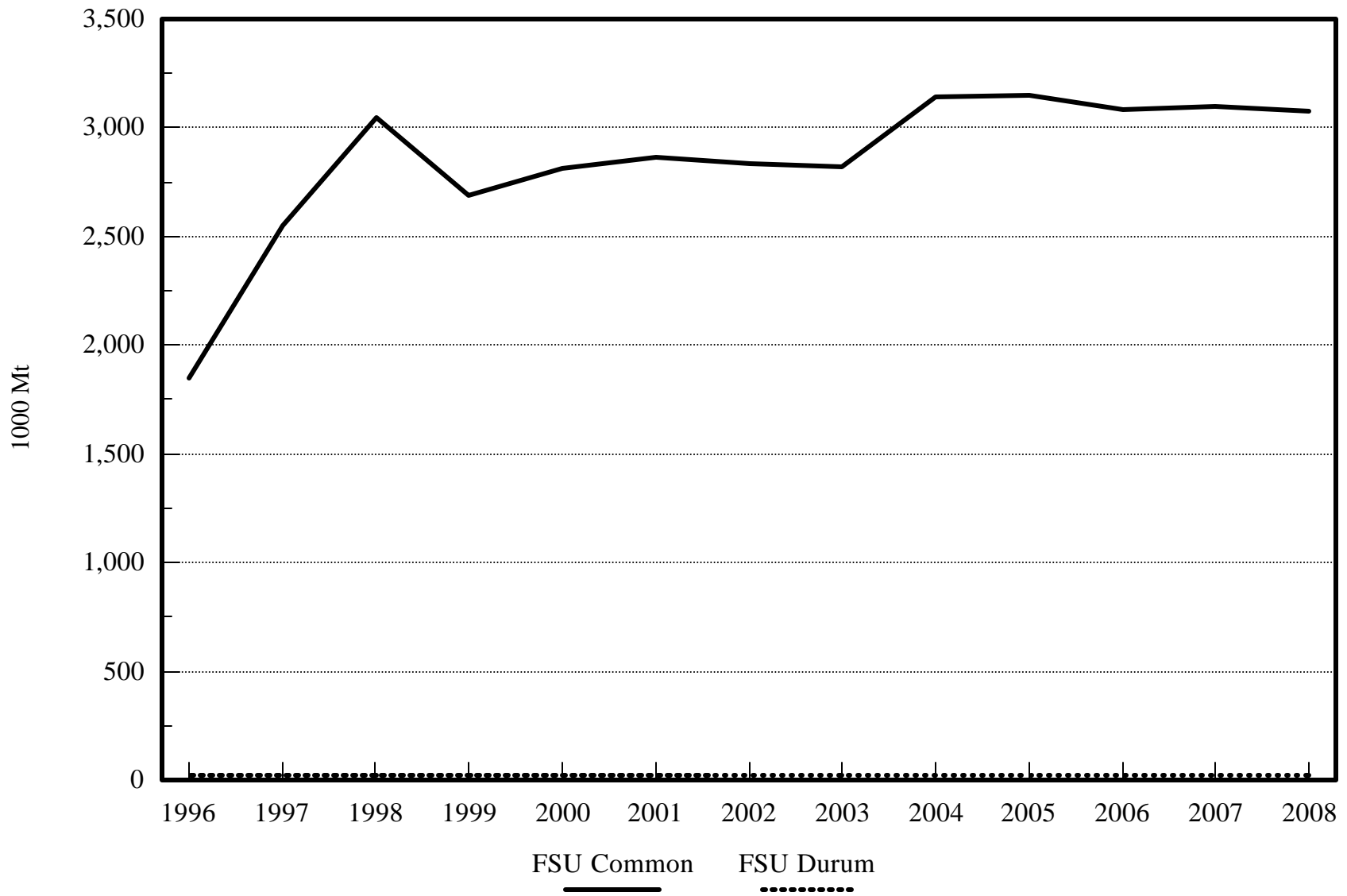


Figure 14. Common and Durum Wheat Imports by Former Soviet Union, 1996 to 2008

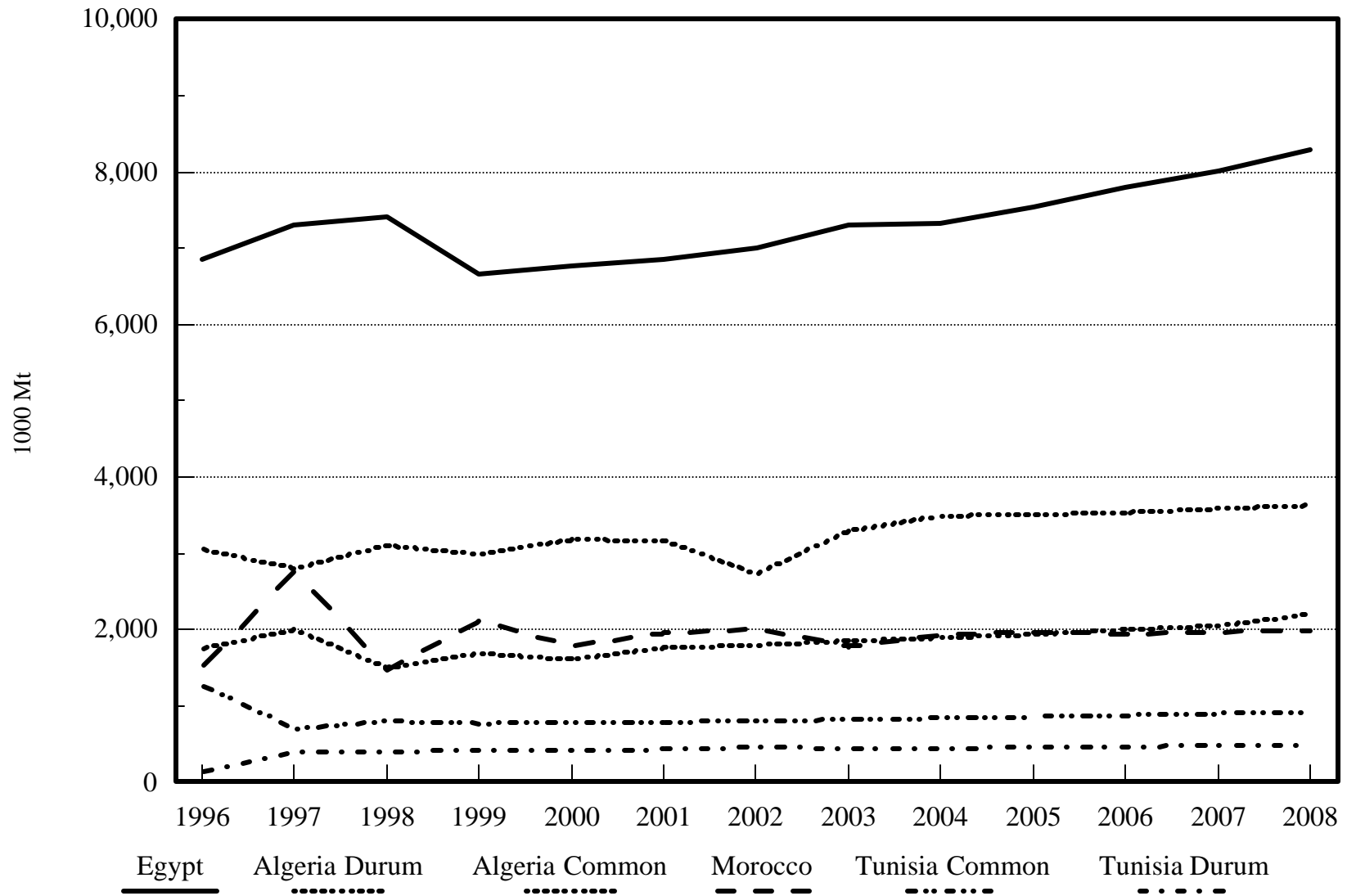


Figure 15. Common and Durum Wheat Imports by Major African Countries, 1996 to 2008

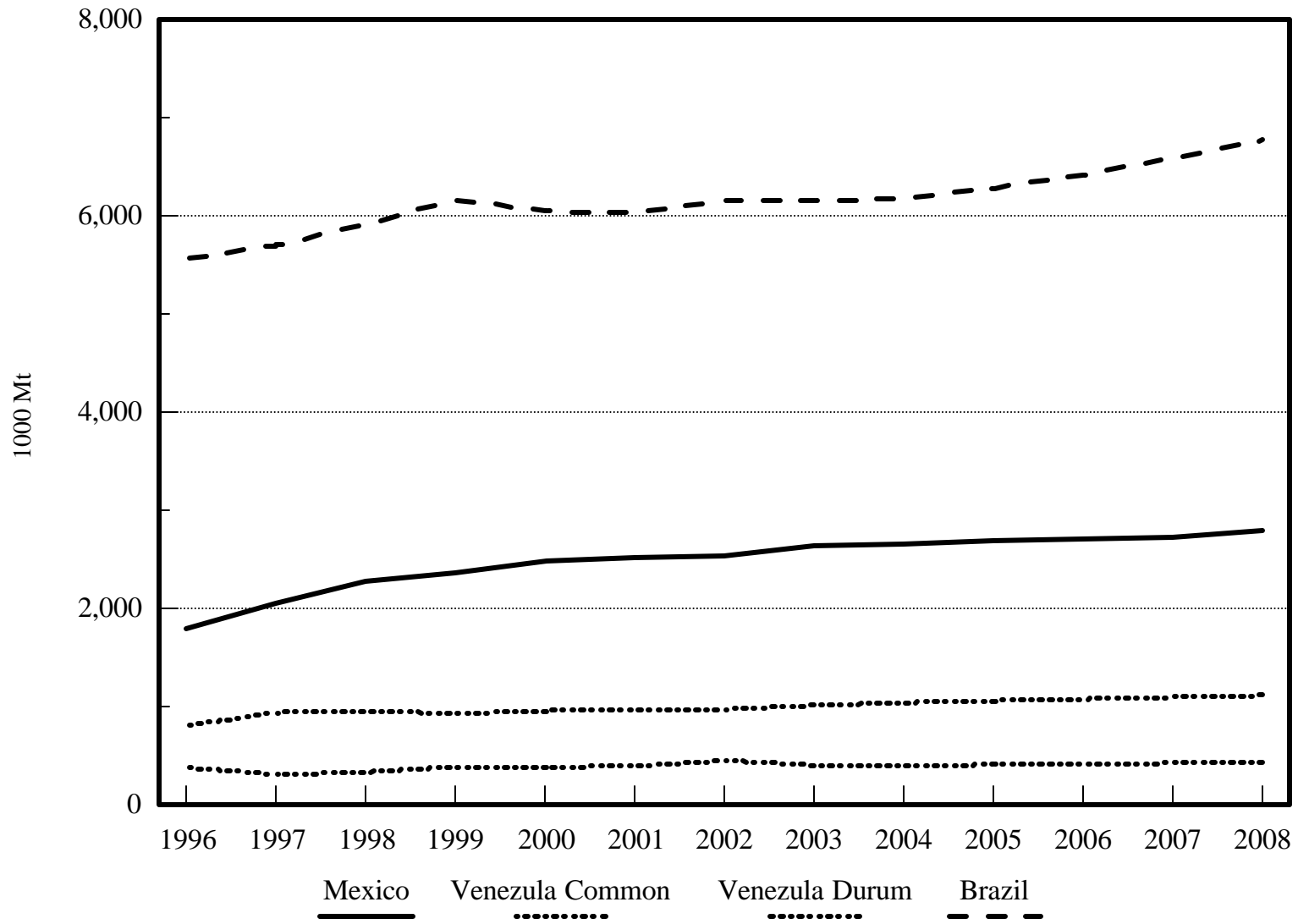


Figure 16. Common and Durum Wheat Imports by Latin American Countries, 1996 to 2008

All exporting countries except the E.U. are predicted to increase their production and exports of common wheat for the 1998-2008 period. World consumption of common wheat is expected to increase slightly faster than the world production, resulting in a gradual increase in the world price of common wheat. Production and exports of common wheat in Argentina are predicted to grow faster than those in other exporting countries. It is predicted that both common and durum wheat exports in the E.U. will decrease although its production will increase during the period. Some of the common wheat produced will be used as feed in the E.U.

The United States is expected to increase its common wheat production and exports, but decrease its production and exports of durum wheat. This is mainly due to the very high production of durum wheat in 1998.

Canada is expected to increase its common and durum wheat production and exports for the forecasting period, while the E.U. will decrease its production and exports. This implies that the E.U. will become less competitive in wheat production under the UR Agreement.

Common wheat demand in Southeast Asian countries is predicted to grow for the 1998-2008 period. China's imports for common wheat will grow faster than other countries in the region.

The FSU will increase its imports of durum wheat for the 1998-2008 period, but its import of common wheat is expected to remain level. The country will increase its domestic production of common wheat gradually for the forecasting period.

Egypt, the largest importer of common wheat in the North Africa region, will increase its imports of common wheat. Its imports will grow slower than other countries in the region. Import demand for both common and durum wheat in countries in the region will increase.

Import demands for common wheat in Brazil, Venezuela, and Mexico are expected to be strong for the 1998-2008 period. Import demand for durum wheat in Venezuela will be strong for the forecasting period.

REFERENCES

- Australian Wheat Board. *Annual Report 1993/94*. Melbourne, Australia, 1995.
- Australian Wheat Board. *Crop Report*. Melbourne, Australia, various years.
- Benirschka, Martin, and Won W. Koo. *World Wheat Policy Simulation Model: Description and Computer Program Documentation*. Department of Agricultural Economics, North Dakota State University, Fargo. December 1995.
- Canadian Wheat Board. *Grains from Western Canada 1993-94*. Winnipeg, Manitoba.
- Canadian Grain Council. *Canadian Grains Industry Statistical Handbook*. Winnipeg, Manitoba, various issues.
- Commission of the European Communities. *Agricultural Markets*. Brussels, various issues.
- Eurostat. *Agricultural Prices: Price Indices and Absolute Prices*. Luxembourg, various issues.
- Eurostat. *Agriculture: Statistical Yearbook*. Luxembourg, various issues.
- Food and Agricultural Policy Research Institute. *FAPRI 1997: U.S. Agricultural Outlook*. Staff Report #1-97. Iowa State University and University of Missouri-Columbia, January 1997.
- International Monetary Fund. *International Financial Statistics CD-ROM*. Washington, DC, September 1997.
- International Wheat Council. *World Grain Statistics*. London, UK, various issues.
- Statistics Canada. *Grain Trade of Canada*. Ottawa: Statistics Canada. Catalogue 22-201 Annual, various issues.
- U.S. Department of Agriculture, Agricultural Stabilization and Conservation Service. Program Data (computer files), Washington, DC, 1993.
- U.S. Department of Agriculture, Economic Research Service. *Wheat Situation and Outlook Report*. Washington, DC, various issues.
- U.S. Department of Agriculture, Economic Research Service. *Europe: International Agriculture and Trade Reports - Situation and Outlook Series*. Washington, DC, various issues.
- U.S. Department of Agriculture, Economic Research Service. *PS&D View* (computer files).

Appendix

1999 Baseline Solution

United States - Nominal Farm Prices (U.S. dollars/bushel)

	1996	1997	1998	1999	2000	2001	2002	2003	2004	2005	2006	2007	2008
HRS Wheat	4.28	3.05	2.69	2.82	3.02	3.21	3.3	3.46	3.57	3.58	3.6	3.67	3.76
HRW Wheat	4.33	2.99	2.64	2.76	2.95	3.15	3.22	3.39	3.49	3.51	3.53	3.59	3.68
SRW Wheat	4.21	2.99	2.66	2.78	2.96	3.16	3.23	3.38	3.48	3.5	3.51	3.57	3.66
White Wheat	4.6	3.34	2.89	3.12	3.31	3.45	3.59	3.75	3.86	3.87	3.9	3.96	4.05
Durum Wheat	5.16	4.05	2.88	3.11	3.32	3.48	3.62	3.79	3.96	4.00	4.06	4.11	4.19

United States - Wheat Area Planted (million acres)

	1996	1997	1998	1999	2000	2001	2002	2003	2004	2005	2006	2007	2008
HRS Wheat	19.1	18.5	18	18.1	18.5	19.2	19.6	20.1	19.7	19.8	20	20.1	20.2
HRW Wheat	35.8	34.2	32.5	33.1	30.6	31.1	31.2	31.4	33.1	34.4	35.3	36.2	37.1
SRW Wheat	11.8	10	10.1	10.6	9.1	8.4	7.6	7.6	7.8	8.5	8.7	8.9	9.5
White Wheat	5.3	5	5.4	5.4	5.4	5.4	5.5	5.5	5.6	5.6	5.7	5.7	5.8
Durum Wheat	3.6	3.3	3.2	3.1	3.1	3.1	3.1	3.1	3.1	3.2	3.2	3.2	3.2
All Wheat	75.6	71	69.2	70.3	66.7	67.2	67	67.7	69.3	71.5	72.9	74.1	75.8

United States - Wheat Yield (bushels/acre harvested)

	1996	1997	1998	1999	2000	2001	2002	2003	2004	2005	2006	2007	2008
Hard Red Spring	33.56	28.12	34.75	32.6	32.6	33.04	33.57	33.95	34.24	34.64	34.96	35.21	35.62
Hard Red Winter	29.63	38.79	35.21	33.9	33.8	34.03	34.34	34.67	35.01	35.35	35.68	36.02	36.36
Soft Red Winter	43.51	54.37	44.9	45.68	46.44	47.2	47.96	48.72	49.48	50.23	50.79	51.2	51.9
White	68.21	69.77	62.71	63.68	64.4	65.11	65.81	66.51	67.21	67.91	68.61	69.31	70.01
Durum	33.17	27.81	36.9	33.79	33.83	34.09	34.35	34.62	34.89	35.16	35.42	35.69	35.96
All Wheat	41.616	43.772	42.894	41.93	42.214	42.694	43.206	43.694	44.166	44.658	45.092	45.486	45.97

United-- States - Wheat Production (million bushels)

	1996	1997	1998	1999	2000	2001	2002	2003	2004	2005	2006	2007	2008
Hard Red Spring	630.7401	511.8965	615.492	580.619	593.4504	624.2181	647.4444	671.4767	663.7356	674.898	688.0128	696.3975	708.0116
Hard Red Winter	859.2107	1074.561	926.9033	908.8929	837.7668	857.2497	867.8405	881.7968	938.6531	984.9924	1020.198	1056.178	1092.654
Soft Red Winter	505.2033	535.0008	446.2342	476.4607	415.8423	390.1363	358.6641	364.3476	379.7689	420.1237	434.803	448.3891	485.1612
White	355.7288	343.2684	333.2159	338.37	342.1958	345.9685	356.1637	359.9521	370.354	374.2113	384.8198	388.7459	399.5611
Durum	116.1	86.2	114.4	103.1	103.5	104.6	105.7	106.8	107.9	109.1	110.2	111.4	112.6
All Wheat	2466.983	2550.926	2436.245	2407.443	2292.755	2322.173	2335.813	2384.373	2460.412	2563.325	2638.034	2701.111	2797.988

United States - Common Wheat Supply and Utilization (million bushels)

	1996	1997	1998	1999	2000	2001	2002	2003	2004	2005	2006	2007	2008
Carry-in Stocks	320.1	4028	568.1	513.2	538	529	528.1	546.1	517.8	501.1	500.5	497.8	497.6
Production	2350.883	2464.726	2321.845	2304.343	2189.255	2217.573	2230.113	2277.573	2352.512	2454.225	2527.834	2589.711	2685.388
Net Exports	1031	1216	1244.8	1118.8	1040.2	1040.1	1014.6	1090.2	1172.4	1263.1	1314.9	1386.1	1472.9
Consumption	1055.3	1059	1066.1	1093.7	1090.7	1101	1120.4	1112.9	1123.9	1139	1148.5	1160.4	1173.5
Food	788.8	795.8	803	809.6	816.4	825.3	834.7	843.3	852.7	862.5	871.8	881.7	890.9
Seed	91.5	89.2	90.7	87.3	87.1	86.8	88	90.3	93.5	95.5	97.5	99.8	104.6
Feed	175	173.9	172.5	196.8	187.2	188.8	197.7	179.3	117.7	181	179.2	178.9	178
Carry-out Stocks	402.8	568.1	513.2	538	529	528.1	546.1	517.8	501.1	500.5	497.8	497.6	497.9

United States - Common Wheat Stocks-to-Use Ratio (percent) and Per Capita Food Use (bushels)

	1996	1997	1998	1999	2000	2001	2002	2003	2004	2005	2006	2007	2008
Per Capita Food Use	2.97	2.97	2.97	2.97	2.97	2.98	2.99	3	3.01	3.02	3.02	3.03	3.04
Stocks-to-Use Ratio	38.16	53.65	48.14	49.19	48.5	47.97	48.74	46.53	44.59	43.94	43.34	42.88	42.43

United States - Durum --Wheat Supply and Utilization (million bushels)

	1996	1997	1998	1999	2000	2001	2002	2003	2004	2005	2006	2007	2008
Carry-in Stocks	26	31	24	38	38.3	38.1	37.9	37.8	37.6	37.4	37.2	37	36.8
Production	116.1	86.2	114.4	103.1	103.5	104.6	105.7	106.8	107.9	109.1	110.2	111.4	112.6
Net Exports	14	15	14	13.2	10.9	11.1	11	11.9	12.4	12.7	13	13.4	13.7
Consumption	97	78	86.5	89.6	92.8	93.6	94.9	95.1	95.7	96.6	97.4	98.2	99
Food	92.5	73.6	82.3	85.4	88.6	89.4	90.7	90.8	91.5	92.3	93.1	93.9	94.7
Seed	4.5	4.4	4.1	4.2	4.2	4.2	4.2	4.3	4.3	4.3	4.3	4.3	4.3
Carry-out Stocks	31	24	38	38.3	38.1	37.9	37.8	37.6	37.4	37.2	37	36.8	36.6

United States - Durum Wheat Stocks-to-Use Ratio (percent) and Per Capita Food Use (bushels)

	1996	1997	1998	1999	2000	2001	2002	2003	2004	2005	2006	2007	2008
Per Capita Food Use	0.35	0.28	0.3	0.31	0.32	0.32	0.32	0.32	0.32	0.32	0.32	0.32	0.32
Stocks-to-Use	31.96	30.77	43.93	42.79	41.09	40.52	39.78	39.51	39.05	38.5	38	37.5	37.01

United States - All Wheat Supply and Utilization (million bushels)

	1996	1997	1998	1999	2000	2001	2002	2003	2004	2005	2006	2007	2008
Carry-in Stocks	346.1	433.8	592.1	551.2	576.3	567.1	566.1	583.8	555.4	538.5	537.7	534.8	534.4
Production	2285.1	2526.5	2370.5	2340.4	2225.4	2244.8	2258.6	2281.7	2387.6	2510.5	2571	2657.8	2759.2
Net Exports	1045.1	1231.2	1258.7	1132	1051.1	1051.2	1025.6	1102.2	1184.9	1275.8	1327.9	1399.5	1486.6
Consumption	1152.3	1137	1152.6	1183.3	1183.5	1194.6	1215.3	1207.9	1219.6	1235.6	1245.9	1258.6	1272.5
Food	881.3	869.5	885.3	895	905	914.7	925.3	934.1	944.2	954.8	964.9	975.6	985.6
Seed	96	93.6	94.8	91.5	91.3	91.1	92.3	94.5	97.8	99.8	101.8	104.1	108.9
Feed	175	173.9	172.5	196.8	187.2	188.8	197.7	179.3	177.7	181	179.2	178.9	178
Carry-out Stocks	433.8	592.1	551.2	576.3	567.1	566.1	583.8	555.4	538.5	537.7	534.8	534.4	534.6

United States - All wheat Stocks-to-Use Ratio (percent) and Per Capita Food Use (bushels)

	1996	1997	1998	1999	2000	2001	2002	2003	2004	2005	2006	2007	2008
Per Capita Food Use	3.32	3.25	3.28	3.28	3.29	3.3	3.31	3.32	3.33	3.34	3.35	3.36	3.37
Stocks-to-Use Ratio	37.64	52.08	47.82	48.7	47.92	47.38	48.04	45.98	44.15	43.51	42.93	42.46	42.01

United States - Wheat Net Exports (1000 metric tons)

	1996	1997	1998	1999	2000	2001	2002	2003	2004	2005	2006	2007	2008
Common Wheat	28060.3	33093.6	33877.8	30449.7	28309.7	28306.6	27612.7	29671.2	31908.6	34375	35784.4	37724.8	40084.6
Durum Wheat	381	408.2	381	358.6	296	302.4	298.3	324.7	338	345.4	355	364.3	374.2

Canada - Nominal Wheat Export Prices (Canadian dollars/metric ton)

	1996	1997	1998	1999	2000	2001	2002	2003	2004	2005	2006	2007	2008
Common Wheat	305.09	187.26	158.26	174.82	201.97	199.15	178.6	230.58	237.4	230.79	238.37	241.77	247.6
Durum Wheat	305.76	276.78	181.11	189.55	207.4	205.7	186.91	237.62	249.36	245.11	250.27	251.95	255.18

Canada - Nominal Domestic Prices (Canadian dollars/metric ton)

	1996	1997	1998	1999	2000	2001	2002	2003	2004	2005	2006	2007	2008
Spring Wheat	315.04	172.02	120.08	139.41	169.5	167.09	145.25	202.88	211.15	204.64	213.79	218.37	225.67
Durum Wheat	290.83	259.87	150.05	158.86	175.34	174.37	158.02	204.28	215.55	212.37	217.74	219.96	223.61

Canada - Wheat Area Harvested (1000 hectares)

	1996	1997	1998	1999	2000	2001	2002	2003	2004	2005	2006	2007	2008
CWRS Wheat	10661	10298	11500	10639	10763	10881	10909	10935	11061	11083	11077	11104	11127
CWAD Wheat	2110	1820	1809	1711	1720	1728	1737	1745	1754	1763	1772	1781	1790
All Wheat	12771	12118	13309	12350	12483	12609	12646	12680	12815	12846	12849	12885	12916

Canada --Wheat Yield (metric tons/hectare)

	1996	1997	1998	1999	2000	2001	2002	2003	2004	2005	2006	2007	2008
CWRS Wheat	2.4	2.3	2.31	2.32	2.33	2.34	2.35	2.36	2.37	2.38	2.39	2.4	2.41
CWAD Wheat	2.2	2.15	2.24	2.24	2.25	2.25	2.25	2.25	2.25	2.25	2.25	2.25	2.25
All Wheat	2.37	2.28	2.31	2.31	2.32	2.33	2.34	2.35	2.35	2.36	2.37	2.38	2.39

Canada - Canadian Western Red Spring Wheat Supply and Utilization (1000 metric tons)

	1996	1997	1998	1999	2000	2001	2002	2003	2004	2005	2006	2007	2008
Carry-in Stocks	1151	2916	949	1141	1300	1301	1303	1304	1305	1307	1308	1309	1310
Production	25586	23685	26565	24702	25098	25481	25656	25824	26232	26393	26490	26664	26829
Net Exports	12500	14000	14800	17682	18064	18330	18516	18373	18600	18642	18602	18637	18659
Consumption	6790	6968	6940	6862	7033	7149	7138	7449	7631	7750	7887	8026	8169
Food	2259	2283	2308	2269	2302	2317	2269	2380	2428	2446	2473	2502	2532
Seed	1024	1150	1064	1079	1095	1103	1110	1128	1136	1140	1148	1156	1166
Feed	3507	3535	3568	3513	3636	3729	3759	3941	4067	4163	4265	4368	4471
Carry-out Stocks	2916	949	1141	1300	1301	1303	1304	1305	1307	1308	1309	1310	1312

Canada - Western Red Spring Wheat Stocks-to-Use Ratio (percent) Per Capita Food Use (kilograms)

	1996	1997	1998	1999	2000	2001	2002	2003	2004	2005	2006	2007	2008
Per Capita Food Use	75.49	75.49	75.49	74.204	73.72957	73.49229	71.25396	73.98638	74.8008	74.69623	74.85339	75.04628	75.25903
Stocks to Use Ratio	42.95	13.61	16.45	18.95	18.5	18.22	18.27	17.52	17.12	16.88	16.6	16.33	16.06

Canada - Canadian Western Amber Durum Wheat Supply and Utilization (1000 metric tons)

	1996	1997	1998	1999	2000	2001	2002	2003	2004	2005	2006	2007	2008
Carry-in Stocks	1973	1522	938	838	824	809	807	812	804	804	812	818	824
Production	4627	3913	4152	4139	4190	4240	4290	4340	4398	4459	4529	4588	4648
Net Exports	4094	3386	3180	3095	3142	3175	3234	3268	3293	3330	3375	3416	3459
Consumption	984	1111	1072	1058	1063	1067	1051	1080	1105	1121	1148	1166	1183
Food	157	158	160	182	171	176	196	174	170	175	177	179	181
Seed	127	127	120	120	121	122	122	123	123	124	125	125	126
Feed	700	827	792	455	471	470	433	484	502	503	507	511	516
Carry-out Stocks	1522	938	838	824	809	807	812	804	804	812	818	824	830

Canada - Western Amber Durum Wheat Stocks-to-Use Ratio (percent) Per Capita Food Use (kilograms)

	1996	1997	1998	1999	2000	2001	2002	2003	2004	2005	2006	2007	2008
Per Capita Food Use	5.23	5.23	5.23	5.9	5.48	5.57	6.15	5.4	5.23	5.34	5.35	5.37	5.39
Stocks to Use Ratio	154.67	84.37	78.14	108.65	105.93	105.1	108.03	102.99	101.2	101.38	101.22	101.02	100.79

Canada - All Wheat Supply and Utilization (1000 metric tons)

	1996	1997	1998	1999	2000	2001	2002	2003	2004	2005	2006	2007	2008
Carry-in Stocks	3123.9	4438.3	1886.155	1979.079	2123.564	2109.826	2109.185	2115.544	2108.725	2110.961	2120.287	2126.962	2134.615
Production	30213.4	27598.4	30717	28541.3	28959.02	29361.24	29556.09	29743.62	30171.12	30351.93	30469.06	30662.81	30847.77
Net Exports	16594	17386	17980	20777.07	21176.43	21445.14	21660.18	21520.81	21743.36	21791.39	21767.85	21813.23	21848.71
Consumption	7774	8079.357	8012	7619.75	7796.328	7916.749	7889.559	8229.626	8425.521	8551.219	8694.526	8841.925	8991.988
Food	2415.871	2440.996	2467.847	2451.858	2472.953	2492.89	2465.165	2553.431	2597.43	2620.791	2650.003	2681.02	2712.916
Seed	1151.4	1276.63	1183.691	1199.63	1216.208	1224.415	1232.541	1251.09	1259.076	1264.341	1272.912	1281.108	1291.507
Feed	4207.044	4361.731	4360.462	3968.262	4107.167	4199.445	4191.853	4425.105	4569.014	4666.088	4771.611	4879.797	4987.565
Carry-out Stocks	4438.3	1886.155	1979.079	2123.564	2109.826	2109.185	2115.544	2108.725	2110.961	2120.287	2126.962	2134.615	2141.678

Canada - All Wheat Stocks-to-Use Ratio (percent) Per Capita Food Use (kilograms)

	1996	1997	1998	1999	2000	2001	2002	2003	2004	2005	2006	2007	2008
Per Capita Food Use	80.72	80.72	80.72	79.32	79.21	79.06	77.41	79.39	80.03	80.03	80.2	80.42	80.65
Stocks to Use Ratio	57.09	23.35	24.7	27.87	27.06	26.64	26.81	25.62	25.05	24.8	24.46	24.14	23.82

Canada - Wheat Exports (1000 metric tons)

	1996	1997	1998	1999	2000	2001	2002	2003	2004	2005	2006	2007	2008
Common Wheat	12500	14000	14800	17681.59	18064.09	18330.16	18516.47	18373.23	18599.97	18641.85	18602.45	18636.77	18659.26
Durum Wheat	4094	3386	3180	3095	3112	3115	3144	3148	3143	3150	3165	3176	3189

European Union - Nominal Producer Prices (ECU/metric ton)

	1996	1997	1998	1999	2000	2001	2002	2003	2004	2005	2006	2007	2008
Common Wheat	150	117.6	115.7	125.4	126.59	127.49	128.37	129.26	130.93	132.74	134.29	135.65	137.49
Durum Wheat	165	165.9	160.7	150.78	156.95	158.49	158.85	158.91	158.89	158.86	158.84	158.82	158.82

European Union- Wheat Area-Harvested (1000 hectares)

	1996	1997	1998	1999	2000	2001	2002	2003	2004	2005	2006	2007	2008
Common Wheat	14216	14104	13365	13573	13668	13744	13818	13892	13966	14041	14116	14191	14266
Durum Wheat	2913	2900	3023	2957	3029	3050	3056	3058	3058	3057	3057	3056	3055
All Wheat	17129	17004	16388	16530	16697	16794	16875	16950	17024	17099	17173	17247	17321

European Union - Wheat Yield (metric tons/hectare)

	1996	1997	1998	1999	2000	2001	2002	2003	2004	2005	2006	2007	2008
Common Wheat	6.08	6.08	5.99	6.14	6.21	6.26	6.29	6.32	6.35	6.38	6.41	6.44	6.47
Durum Wheat	2.7	2.69	2.69	2.69	2.7	2.7	2.7	2.7	2.7	2.7	2.7	2.7	2.7
All Wheat	5.53	5.5	5.38	5.52	5.57	5.61	5.64	5.67	5.7	5.72	5.75	5.78	5.81

European Union - Common Wheat Supply and Utilization (1000 metric tons)

	1996	1997	1998	1999	2000	2001	2002	2003	2004	2005	2006	2007	2008
Carry-in Stocks	9651	15027	17183	11841	12028	12410	12819	13231	13143	12969	12982	13123	12968
Production	86433	85752	80055	82724.22	83623.86	84785.44	85657.22	86533.44	87128.35	88005.72	88650.3	89400.08	89262
Net Exports	12325	14095	15283	11301	10903.58	10824	10634	10911	10539.25	10175.14	9631.74	9653.04	8841.38
Consumption	69767	68801	70115	70256	71271	72296	73320	74342	75401	76358	77321	78245	79059
Food	37412	35016	35051	35174	35169	35170	35173	35174	35121	35063	35008	34909	34802
Feed	32355	33785	35063	35082	36102	37126	38147	39168	40280	41295	42313	43336	44257
Carry-out Stocks	15027	17183	11841	12028	12410	12819	13231	13143	12969	12982	13123	12968	13271

European Union - Common Wheat Stocks-to-Use Ratio (percent) Per Capita Food Use (kilograms)

	1996	1997	1998	1999	2000	2001	2002	2003	2004	2005	2006	2007	2008
Per Capita Food Use	100.01	93.29	93.29	93.53	93.42	93.33	93.24	93.16	93.01	92.86	92.71	92.55	92.35
Stocks to Use Ratio	21.54	24.97	16.89	16.88	17.15	17.44	17.73	17.35	16.89	16.67	16.63	16.22	16.39

European Union - Durum Wheat Supply and Utilization (1000 metric tons)

	1996	1997	1998	1999	2000	2001	2002	2003	2004	2005	2006	2007	2008
Carry-in Stocks	1585	800	1401	2533	1826	1650	1609	1603	1605	1607	1610	1612	1612
Production	8250	7801	8132	7967	8164	8224	8244	8251	8255	8256	8256	8257	8259
Net Exports	-300	500	800	723	415	350	341	343	358	371	383	404	425
Consumption	8300	7700	7800	7951	7925	7915	7909	7905	7894	7883	7871	7853	7835
Food	8300	7700	7800	7951	7925	7915	7909	7905	7894	7883	7871	7853	7835
Carry-out Stocks	800	1401	2533	1826	1650	1609	1603	1605	1607	1610	1612	1612	1612

European Union - Durum Wheat Stocks-to-Use Ratio - (percent) Per Capita Food Use (kilograms)

	1996	1997	1998	1999	2000	2001	2002	2003	2004	2005	2006	2007	2008
Per Capita Food Use	22.19	20.52	20.76	21.14	21.05	21	20.97	20.94	20.91	20.88	20.85	20.82	20.79
Stocks to Use Ratio	9.64	18.19	32.47	22.97	20.82	20.33	20.26	20.3	20.36	20.42	20.48	20.53	20.57

European Union - All Wheat Supply and Utilization (1000 metric tons)

	1996	1997	1998	1999	2000	2001	2002	2003	2004	2005	2006	2007	2008
Carry-in Stocks	11236	15827	18584	14374	13854	14060	14428	14834	14748	14576	14592	14735	14580
Production	94683	93553	88187	90691.22	91787.86	93009.44	93901.22	94784.44	95383.35	96261.72	96906.3	97657.08	97521
Net Exports	12025	14595	16083	12024	11318.58	11174	10975	11254	10897.25	10546.14	10014.74	10057.04	9266.38
Consumption	78067	76501	77915	78207	79196	80211	81229	82247	83295	84241	85192	86098	86894
Food	45712	42716	42851	43125	43094	43085	43082	43079	43015	42946	42879	42762	42637
Feed	32355	33785	35063	35082	36102	37126	38147	39168	40280	41295	42313	43336	44257
Carry-out Stocks	15827	18584	14374	13854	14060	14428	14834	14748	14576	14592	14735	14580	14883

European Union - All Wheat Stocks-to-Use Ratio (percent) Per Capita Food Use (kilograms)

	1996	1997	1998	1999	2000	2001	2002	2003	2004	2005	2006	2007	2008
Per Capita Food Use	122.19	113.81	114.06	114.67	114.47	114.34	114.21	114.09	113.92	113.74	113.56	113.36	113.14
Stocks to Use Ratio	20.27	24.29	18.45	17.49	17.51	17.72	17.97	17.63	17.21	17.02	16.98	16.61	16.76

Australia - Nominal Wheat Export Prices (Australian dollars/metric ton)

	1996	1997	1998	1999	2000	2001	2002	2003	2004	2005	2006	2007	2008
U.S. HRW	302.61	184.47	141.62	158.02	183.47	181.82	163.87	212.41	219.58	214.32	222.03	225.88	232.01
U.S. Durum	303.27	272.65	162.07	171.33	188.41	187.8	171.5	218.91	230.64	227.62	233.11	235.39	239.12

Australia - Nominal Domestic Prices (Australian dollars/metric ton)

	1996	1997	1998	1999	2000	2001	2002	2003	2004	2005	2006	2007	2008
Common Wheat	320	157	84	133.52	155.35	153.94	138.54	180.18	186.32	181.81	188.42	191.73	196.99

Australia - Wheat Area Harvested (1000 hectares), Yield (metric tons/hectare), and Production (1000 metric tons)

	1996	1997	1998	1999	2000	2001	2002	2003	2004	2005	2006	2007	2008
Area Harvested	11337	10311	11300	11402	11729	12002	12202	12456	12601	12796	13098	13292	13598
Yield	2.09	1.88	1.95	1.98	1.99	2.01	2.02	2.04	2.05	2.07	2.08	2.1	2.11
Production	23694	19385	22035	22575.96	23340.71	24124.02	24648.04	25410.24	25832.05	26487.72	27243.84	27913.2	28691.78

Australia - Wheat Supply and Utilization (1000 metric tons)

	1996	1997	1998	1999	2000	2001	2002	2003	2004	2005	2006	2007	2008
Carry-in Stocks	2537	2758	2204	3998	3248	3255	3261	3268	3275	3281	3288	3294	3301
Production	23694	19385	22035	22575.96	23340.71	24124.02	24648.04	25410.24	25832.05	26487.72	27243.84	28123.2	28691.78
Net Exports	19479	14939	14970	16706	16719	17330	17698	18719	19530	20182	20936	21659	22423
Consumption	3994	5000	5271	4614	4618	4750	4963	4850	4938	5092	5169	5267	5360
Food	2289	3201	3129	2774	2744	2819	2954	2825	2864	2953	2984	3030	3067
Feed	1705	1799	2142	1840	1874	1931	2010	2025	2074	2139	2185	2237	2294
Carry-out Stocks	2758	2204	3998	3248	3255	3261	3268	3275	3281	3288	3294	3301	3307

Australia - Wheat Stocks-to-Use Ratio (percent) and Per Capita Food Use (kilograms)

	1996	1997	1998	1999	2000	2001	2002	2003	2004	2005	2006	2007	2008
Per Capita Food Use	125.57	173.92	168.49	148.03	145.12	147.79	153.6	145.76	146.58	149.95	150.46	151.71	152.48
Stocks-to-Use Ratio	69.05	44.08	75.85	70.4	70.48	68.66	65.84	67.51	66.44	64.56	63.73	62.67	61.7

Argentina - Wheat Area Planted and Harvested (1000 hectares), Yield (metric tons/hectare), and Production (1000 metric tons)

	1996	1997	1998	1999	2000	2001	2002	2003	2004	2005	2006	2007	2008
Area Planted	7400	6100	5100	7087	7523	7700	7921	7872	7490	7161	6728	6274	5856
Area Harvested	7100	5700	4700	6647	7165	7229	7526	7372	7019	6715	6315	5896	5510
Yield	2.24	2.6	2.23	2.39	2.38	2.41	2.43	2.45	2.47	2.49	2.51	2.53	2.55
Production	15904	14820	10481	15886.33	17052.7	17421.89	18288.18	18061.4	17336.93	16720.35	15850.65	14916.88	14050.5

Argentina - Wheat-Supply and Utilization (1000 metric tons)

	1996	1997	1998	1999	2000	2001	2002	2003	2004	2005	2006	2007	2008
Carry-in Stocks	149	800	720	400	435	433	442	461	443	443	453	457	462
Production	15904	14820	10481	15886.33	17052.7	17421.89	18288.18	18061.4	17336.93	16720.35	15850.65	14916.88	14050.5
Net Exports	10167	9980	5968	12624.33	13737.7	13927.89	14646.18	14377.4	13623.93	12926.35	11937.65	10867.88	9975.5
Consumption	5083	4900	4833	4826	4882	5053	5183	5244	5274	5346	5462	5594	5617
Carry-out Stocks	800	720	400	435	433	442	461	443	443	453	457	462	466

Argentina - Wheat Stocks-to-Use Ratio (percent) and Per Capita Consumption(kilograms)

	1996	1997	1998	1999	2000	2001	2002	2003	2004	2005	2006	2007	2008
Per Capita Consumption	145.06	139.66	136	134.05	133.86	136.78	141.18	138.33	139.93	142.7	143.95	145.57	146.91
Stocks-to-Use Ratio	15.74	14.69	8.28	9.01	8.87	8.75	8.73	8.45	8.25	8.17	8.07	7.97	7.87

Algeria - Wheat Production (1000-metric tons)

	1996	1997	1998	1999	2000	2001	2002	2003	2004	2005	2006	2007	2008
Common Wheat	550	800	600	612	624.24	636.72	649.46	662.45	675.7	689.21	703	717.06	731.4
Durum Wheat	400	700	900	918	936.36	955.09	974.19	993.67	1013.55	1033.82	1054.49	1075.58	1097.09
All Wheat	950	1500	1500	1530	1560.6	1591.81	1623.65	1656.12	1689.24	1723.03	1757.49	1792.64	1828.49

Algeria - Per Capita Wheat Production (kilograms)

	1996	1997	1998	1999	2000	2001	2002	2003	2004	2005	2006	2007	2008
Common Wheat	18.85	26.83	19.7	19.69	19.67	19.65	19.65	19.65	19.65	19.65	19.67	19.69	19.7
Durum Wheat	13.71	23.48	29.56	29.53	29.5	29.47	29.47	29.47	29.47	29.47	29.5	29.53	29.56

Algeria - Per Capita Wheat imports (kilograms)

	1996	1997	1998	1999	2000	2001	2002	2003	2004	2005	2006	2007	2008
Common Wheat	102.3	91.96	99.71	96.13	100.13	97.77	82.51	97.63	101.53	99.86	98.91	98.37	97.72
Durum Wheat	58.7	65.68	48.25	54.21	50.66	54.24	54.34	54.92	54.95	55.2	55.93	56.21	59.32
	29.81261	30.45067	31.08808	31.09131	31.74437	32.4104	33.05618	33.71705	34.39399	35.07713	35.74798	36.4271	37.11733

Algeria- Wheat imports (1000 metric tons)

	1996	1997	1998	1999	2000	2001	2002	2003	2004	2005	2006	2007	2008
Common Wheat	3050	2800	3100	2988.63	3178.27	3168.64	2727.55	3291.74	3491.84	3503.07	3535.78	3583.17	3627.01
Durum Wheat	1750	2000	1500	1685.46	1608.17	1757.94	1796.273	1851.74	1889.949	1936.258	1999.385	2047.567	2201.8
All Wheat	4800	4800	4600	4674.09	4786.43	4926.58	4534.07	5174.49	5310.26	5449.5	5574.13	5701.77	5828.8

Brazil - Wheat Area Harvested (1000 hectares), Yield (metric tons/hectare), and Production (1000 metric tons)

	1996	1997	1998	1999	2000	2001	2002	2003	2004	2005	2006	2007	2008
Area Harvested	1833	1522	1400	1472	1545	1638	1670	1616	1661	1677	1643	1601	1545
Yield	1.74	1.58	1.68	1.61	1.61	1.61	1.61	1.61	1.61	1.61	1.61	1.61	1.62
Production	3189	2405	2352	2365	2483	2635	2688	2602	2676	2704	2651	2585	2495

Brazil - Wheat Supply and Utilization (100 metric tons)

	1996	1997	1998	1999	2000	2001	2002	2003	2004	2005	2006	2007	2008
Carry-in Stocks	861	576	541	590	551	527	519	522	502	492	488	482	477
Production	3189	2405	2352	2365	2483	2635	2688	2602	2676	2704	2651	2585	2495
Net Imports	5565	5700	5918	6166	6051	6030	6156	6153	6176	6286	6419	6587	6774
Consumption	8400	8135	8221	8570	8558	8673	8841	8775	8863	8993	9077	9179	9276
Carry-out Stocks	576	541	590	551	527	519	522	502	492	488	482	477	470

Brazil - Wheat Stocks-to-Use Ratio (percent) and Per Capita Consumption (kilograms)

	1996	1997	1998	1999	2000	2001	2002	2003	2004	2005	2006	2007	2008
Per Capita Consumption	50.28	48.16	48.16	49.61	49	49.12	49.57	48.71	48.71	48.94	48.96	49.06	49.14
Stocks-to-Use Ratio	6.86	6.65	7.18	6.43	6.16	5.98	5.91	5.72	5.55	5.43	5.31	5.19	5.07

Brazil - Wheat Exports (1000 metric tons)

	1996	1997	1998	1999	2000	2001	2002	2003	2004	2005	2006	2007	2008
Common Wheat	-5565	-5700	-5918	-6166	-6051	-6030	-6156	-6153	-6176	-6286	-6419	-6587	-6774
Durum Wheat	0	0	0	0	0	0	0	0	0	0	0	0	0

China - Wheat Area Harvested (1000 hectares), Yield (metric tons/hectare), and Production (1000 metric tons)

	1996	1997	1998	1999	2000	2001	2002	2003	2004	2005	2006	2007	2008
Area Harvested	29610	30057	29800	29757	29781	29881	29899	29793	29898	29958	29938	29918	29883
Yield	3.73	4.1	3.69	3.72	3.76	3.79	3.85	3.88	3.9	3.92	3.94	3.97	4
Production	110445	123234	109962	110696	111976.6	113249	115111.2	115596.8	116602.2	117435.4	117955.7	118774.5	119532

China - Wheat Supply and Utilization (1000 metric tons)

	1996	1997	1998	1999	2000	2001	2002	2003	2004	2005	2006	2007	2008
Carry-in Stocks	22695	24166	33366	28828	26107	24564	23837	23634	23110	22794	22674	22541	22433
Production	110445	123234	109962	110696	111976.6	113249	115111.2	115596.8	116602.2	117435.4	117955.7	118774.5	119532
Net Imports	1903	900	2000	2848	3559	3922	3292	3197	3115	3199	3389	3325	3294
Consumption	112603	115000	116500	116265	117079	117898	118606	119318	120033	120754	121478	122207	122940
Carry-out Stocks	24166	33366	28828	26107	24564	23837	23634	23110	22794	22674	22541	22433	22319

China - Wheat Stocks-to-Use Ratio (percent) and Per Capita Consumption (kilograms)

	1996	1997	1998	1999	2000	2001	2002	2003	2004	2005	2006	2007	2008
Per Capita Consumption	91.3	92.37	92.83	92	92	92	92	92	92	92	92	92	92
Stocks-to-Use Ratio	21.46	29.01	24.75	22.45	20.98	20.22	19.93	19.37	18.99	18.78	18.56	18.36	18.15

Egypt - Wheat Area Harvested (1000 hectares), Yield (metric tons/hectare), and Production (1000 metric tons)

	1996	1997	1998	1999	2000	2001	2002	2003	2004	2005	2006	2007	2008
Area Harvested	1016	1044	1050	1172	1161	1182	1179	1172	1202	1201	1202	1208	1211
Yield	5.74	5.6	5.71	5.68	5.66	5.66	5.66	5.68	5.7	5.73	5.77	5.81	5.86
Production	5730	5846	5996	6654	6574	6687	6677	6656	6854	6889	6933	7020	7096

Egypt - Wheat Supply and Utilization (1000 metric tons)

	1996	1997	1998	1999	2000	2001	2002	2003	2004	2005	2006	2007	2008
Carry-in Stocks	830	904	1076	1000	1125	1127	1129	1132	1134	1136	1139	1141	1143
Production	5730	5846	5996	6654	6574	6687	6677	6656	6854	6889	6933	7020	7096
Net Imports	6847	7300	7400	6660	6763	6850	7003	7308	7333	7541	7790	8011	8296
Consumption	12412	13150	13400	13188	13335	13535	13677	13962	14185	14427	14721	15029	15390
Carry-out Stocks	904	1076	1000	1125	1127	1129	1132	1134	1136	1139	1141	1143	1145

Egypt - Wheat Stocks-to-Use Ratio (percent) and Per Capita Consumption (kilograms)

	1996	1997	1998	1999	2000	2001	2002	2003	2004	2005	2006	2007	2008
Per Capita Consumption	205.63	213.83	213.96	206.66	205.25	204.66	203.15	203.91	203.7	203.72	204.59	205.58	207.2
Stocks-to-Use Ratio	7.28	8.18	7.46	8.53	8.45	8.34	8.27	8.12	8.01	7.89	7.75	7.61	7.44

Japan - Wheat Production (1000 metric tons)

	1996	1997	1998	1999	2000	2001	2002	2003	2004	2005	2006	2007	2008
Common Wheat	478	573	600	576	552.96	530.84	509.61	489.22	469.65	450.87	432.83	415.52	398.9

Japan - Per Capita Wheat Production (kilograms)

	1996	1997	1998	1999	2000	2001	2002	2003	2004	2005	2006	2007	2008
Common Wheat	3.81	4.66	4.76	4.56	4.37	4.19	4.01	3.85	3.69	3.54	3.4	3.26	3.13

Japan - Per Capita Wheat Imports (kilograms)

	1996	1997	1998	1999	2000	2001	2002	2003	2004	2005	2006	2007	2008
Common Wheat	49.81	49.2	47.52	48.04	48.44	48.8	49.26	49.61	49.89	50.2	50.45	50.66	50.86

Japan - Wheat imports (1000 metric tons)

	1996	1997	1998	1999	2000	2001	2002	2003	2004	2005	2006	2007	2008
Common Wheat	6264	6200	6000	6066	6129	6187	6257	6308	6350	6396	6427	6454	6479

South Korea - Per Capita Wheat Imports (kilograms)

	1996	1997	1998	1999	2000	2001	2002	2003	2004	2005	2006	2007	2008
Common Wheat	73.74	65	71.23	73.56	75.45	76.82	78.12	78.66	79.32	80.8	81.38	81.86	

South Korea - Wheat Imports (1000 metric tons)

	1996	1997	1998	1999	2000	2001	2002	2003	2004	2005	2006	2007	2008
Common Wheat	3465	3917	3004	3292	3399	3487	3550	3610	3635	3665	3734	3761	3783
Durum Wheat	0	0	0	0	0	0	0	0	0	0	0	0	0

Mexico - Wheat Area Harvested (1000 hectares), Yield (metric tons/hectare), and Production (1000 metric tons)

	1996	1997	1998	1999	2000	2001	2002	2003	2004	2005	2006	2007	2008
Area Harvested	809	810	800	809	818	823	823	831	836	838	840	843	845
Yield	3.84	4.32	4.13	3.95	3.88	3.87	3.9	3.94	3.99	4.05	4.12	4.18	4.24
Production	3107	3499	3304	3193	3173	3187	3208	3273	3338	3396	3459	3522	3585

Mexico - Wheat Supply and Utilization (1000 metric tons)

	1996	1997	1998	1999	2000	2001	2002	2003	2004	2005	2006	2007	2008
Carry-in Stocks	452	596	692	716	701	708	696	652	660	670	679	689	670
Production	3107	3499	3304	3193	3173	3187	3208	3273	3338	3396	3459	3522	3585
Net Imports	1792	2050	2270	2357	2483	2516	2525	2629	2655	2678	2710	2717	2786
Consumption	4756	5550	5550	5565	5649	5715	5776	5894	5984	6064	6159	6258	6361
Carry-out Stocks	596	692	716	701	708	696	652	660	670	679	689	670	680

Mexico - Wheat Stocks-to-Use Ratio (percent) and Per Capita Consumption (kilograms)

	1996	1997	1998	1999	2000	2001	2002	2003	2004	2005	2006	2007	2008
Stocks-to-Use Ratio	12.53	12.47	12.9	12.6	12.54	12.18	11.29	11.21	11.2	11.2	11.19	10.71	10.69
Per Capita Consumption	49.26	56.44	55.45	54.61	54.51	54.22	53.89	54.12	54.08	54	54.03	54.09	54.17

Morocco - Wheat Area Harvested (1000 hectares), Yield (metric tons/hectare), and Production (1000 metric tons)

	1996	1997	1998	1999	2000	2001	2002	2003	2004	2005	2006	2007	2008
Area Harvested	3213	2493	3100	2764	2895	2907	2956	3000	3028	3071	3113	3153	3194
Yield	1.84	0.93	1.42	1.33	1.37	1.38	1.4	1.41	1.43	1.45	1.46	1.48	1.49
Production	5912	2318	4402	3669	3967	4010	4131	4239	4328	4438	4550	4658	4769

Morocco - Wheat Supply and Utilization (1000 metric tons)

	1996	1997	1998	1999	2000	2001	2002	2003	2004	2005	2006	2007	2008
Carry-in Stocks	1600	880	1371	1399	1439	1392	1430	1499	1396	1419	1458	1465	1484
Production	5912	2318	4402	3669	3967	4010	4131	4239	4328	4438	4550	4658	4769
Net Imports	1504	2765	1470	2105	1789	1952	2014	1776	1928	1969	1942	1973	1982
Consumption	5256	5582	5693	5733	5804	5924	6075	6119	6232	6369	6485	6611	6738
Carry-out Stocks	880	1371	1399	1439	1392	1430	1499	1396	1419	1458	1465	1484	1497

Morocco - Wheat Stocks-to-Use-Ratio (percent) and Per Capita Consumption (kilograms)

	1996	1997	1998	1999	2000	2001	2002	2003	2004	2005	2006	2007	2008
Per Capita Consumption	189.98	197.79	197.79	195.49	194.4	194.93	196.34	194.45	194.76	195.7	196.13	196.79	197.42
Stocks-to-Use Ratio	16.74	24.56	24.58	25.1	23.98	24.13	24.68	22.82	22.77	22.9	22.58	22.44	22.22

Morocco - Wheat Exports (1000 metric tons)

	1996	1997	1998	1999	2000	2001	2002	2003	2004	2005	2006	2007	2008
Common Wheat	-1504	-2765	-1470	-2105	-1789	-1952	-2014	-1776	-1928	-1969	1942	-1973	-1982

Former Soviet Union - Wheat Production (1000 metric tons)

	1996	1997	1998	1999	2000	2001	2002	2003	2004	2005	2006	2007	2008
All Wheat	82055	60150	59650	60247	60849	61457	62379	63315	64265	65550	66861	68198	69562

Former Soviet Union - Per Capita Wheat Production (kilograms)

	1996	1997	1998	1999	2000	2001	2002	2003	2004	2005	2006	2007	2008
All Wheat	275.64	201.9	200.42	202.63	204.86	207.11	210.22	213.37	216.57	220.68	224.87	228.91	233.02

Former Soviet Union - Per Capita Wheat Imports (kilograms)

	1996	1997	1998	1999	2000	2001	2002	2003	2004	2005	2006	2007	2008
Common Wheat	6.21	8.57	10.26	9.04	9.47	9.67	9.62	9.5	10.58	10.6	10.36	10.39	10.3
Durum Wheat	0.07	0.07	0.07	0.07	0.07	0.07	0.07	0.08	0.08	0.08	0.08	0.08	0.08
All Wheat	6.28	8.63	10.33	9.11	9.54	9.74	9.69	9.57	10.66	10.68	10.44	10.47	10.38

Former Soviet Union - Wheat Net Imports (1000 metric tons)

	1996	1997	1998	1999	2000	2001	2002	2003	2004	2005	2006	2007	2008
Common Wheat	1850	2550	3050	2688	2813	2868	2835	2818	3139	3148	3082	3094	3075
Durum Wheat	20	20	20	21	21	22	22	22	23	23	24	24	25
All Wheat	1870	2570	3070	2708	2834	2890	2857	2840	3162	3172	3106	3119	3100

Tunisia - Wheat Production (1000 metric tons)

	1996	1997	1998	1999	2000	2001	2002	2003	2004	2005	2006	2007	2008
Common Wheat	92.8	95.58	98.45	99.44	100.43	101.43	102.45	103.47	104.51	105.55	106.61	107.67	108.75
Durum Wheat	1623	1671	1275	1287.75	1300.63	1320.14	1339.94	1360.04	1380.44	1401.15	1422.16	1443.49	1465.15
All Wheat	1715.8	1766.58	1373.45	1387.19	1401.06	1421.57	1442.39	1463.51	1484.95	1506.7	1528.77	1551.17	1573.9

Tunisia - Per Capita Wheat Production (kilograms)

	1996	1997	1998	1999	2000	2001	2002	2003	2004	2005	2006	2007	2008
Common Wheat	10.07	10.19	10.32	10.28	10.24	10.21	10.18	10.15	10.12	10.09	10.06	10.03	10.01
Durum Wheat	176.15	178.19	133.62	133.09	132.57	132.83	133.09	133.36	133.62	133.88	134.15	134.41	134.81

Tunisia - Per Capita Wheat Imports (kilograms)

	1996	1997	1998	1999	2000	2001	2002	2003	2004	2005	2006	2007	2008
Common Wheat	135.43	73.36	82.68	79.44	79.3	79.29	79.36	80.35	81.22	82	82.76	83.63	84.58
Durum Wheat	13.86	41.92	41.34	43.03	42.65	43.16	45.61	43.29	42.97	43.56	43.89	44.22	44.51

Tunisia - Wheat Imports (1000 metric tons)

	1996	1997	1998	1999	2000	2001	2002	2003	2004	2005	2006	2007	2008
Common Wheat	1270	700	800	769	778	788	799	819	839	858	877	898	919
Durum Wheat	130	400	400	416	418	429	459	442	444	456	465	475	484
All Wheat	1400	1100	1200	1185	1196	1217	1258	1261	1283	1314	1343	1373	1403

Taiwan - Per Capita Wheat Imports (kilograms)

	1996	1997	1998	1999	2000	2001	2002	2003	2004	2005	2006	2007	2008
Common Wheat	47.73	48	45.31	49.35	48.25	48.36	49.2	47.61	47.68	48.27	48.55	49.11	49.71

Taiwan - Wheat Imports (1000 metric tons)

	1996	1997	1998	1999	2000	2001	2002	2003	2004	2005	2006	2007	2008
Common Wheat	1035	1050	1000	1089	1074	1087	1115	1089	1100	1124	1140	1162	1186

Venezuela - Per Capita Wheat Imports (kilograms)

	1996	1997	1998	1999	2000	2001	2002	2003	2004	2005	2006	2007	2008
Common Wheat	35.48	40.52	40.51	39.37	39.67	39.71	38.92	39.88	40.28	40.31	40.32	40.38	40.42
Durum Wheat	16.41	13.04	13.86	16.1	15.53	15.85	17.84	15.64	15.08	15.36	15.41	15.44	15.45

Venezuela -- Wheat Imports (1000 metric tons)

	1996	1997	1998	1999	2000	2001	2002	2003	2004	2005	2006	2007	2008
Common Wheat	800	932	950	923	948	967	965	1006	1034	1052	1070	1089	1108
Durum Wheat	370	300	325	378	371	386	442	394	387	401	409	416	424
All Wheat	1170	1232	1275	1301	1319	1352	1407	1401	1421	1453	1479	1505	1532

Rest of the World - Wheat Exports (1000 metric tons)

	1996	1997	1998	1999	2000	2001	2002	2003	2004	2005	2006	2007	2008
Common Wheat	47187	49243	47936	50022	47928	48006	49709	51768	53097	54241	54250	55335	56020
Durum Wheat	1905	1574	2116	1676	1435	1232	1154	1226	1245	1230	1216	1222	1123
