



AgEcon SEARCH
RESEARCH IN AGRICULTURAL & APPLIED ECONOMICS

The World's Largest Open Access Agricultural & Applied Economics Digital Library

This document is discoverable and free to researchers across the globe due to the work of AgEcon Search.

Help ensure our sustainability.

Give to AgEcon Search

AgEcon Search

<http://ageconsearch.umn.edu>

aesearch@umn.edu

*Papers downloaded from **AgEcon Search** may be used for non-commercial purposes and personal study only. No other use, including posting to another Internet site, is permitted without permission from the copyright owner (not AgEcon Search), or as allowed under the provisions of Fair Use, U.S. Copyright Act, Title 17 U.S.C.*

PROCEEDINGS
OF THE
FIFTH INTERNATIONAL CONFERENCE
OF
AGRICULTURAL ECONOMISTS

HELD AT
MACDONALD COLLEGE
CANADA
21 AUGUST TO 28 AUGUST 1938

LONDON
OXFORD UNIVERSITY PRESS
HUMPHREY MILFORD
1939

SECTIONAL GROUP MEETINGS

IN addition to the main sessions of the Conference which are reported verbatim in this volume, six formal group sessions met to discuss special aspects of work in agricultural economics. The following are brief statements of the subjects discussed.

INTERNATIONAL USE OF AGRICULTURAL STATISTICS

C. E. Ladd, Dean of Agriculture, Cornell University, U.S.A., was chairman, and G. S. Dunnett, Imperial Economic Committee, London, England, opened the discussion by emphasizing the increasing use of agricultural statistics for international purposes and outlining the main deficiencies of available statistics for the purpose. The points raised by the opener and subsequent speakers were: The international use of agricultural statistics had been officially recognized since the International Institute of Agriculture was established early in the century. The available statistics had been improved, but the increasing and more detailed use of the statistics for agricultural and trade policy increased the significance of the deficiencies in compilation. Agricultural statistics were compiled primarily for national purposes, and, therefore, the methods, units, conversions, and so on were designed to suit the national conditions and requirements. Efforts to make statistics comparable and uniform from one country to another were subject to this essential difficulty. Greater emphasis should therefore be laid on getting accuracy and reliability in the national statistics and understandable statements of the methods adopted. Exporting countries pointed out that it was as important to them to get adequate statistics and analysis of consumption in the importing countries as to get the production statistics of those countries. The figures of *per capita* consumption for a whole country derived from estimates of 'disappearance' were insufficient in themselves for accurate estimation of trends.

Those taking part in the discussion in addition to the opener were: O. C. Stine, Bureau of Agricultural Economics, Washington, D.C., U.S.A.; T. W. Grindley, Dominion Bureau of Statistics, Ottawa, Canada; H. Krause, Berlin, Germany; V. P. Timoshenko, Food Research Institute, California, U.S.A.; C. Y. Hsiang, China; H. C. Taylor, Farm Foundation, Chicago, U.S.A.; R. L. Gillett, New York State, U.S.A.; R. Freund, Sweden; W. Sedorf, Göttingen,

Germany; P. H. Ferguson, Ottawa, Canada; S. A. Freifeld, International Institute of Agriculture, Rome, Italy; and A. Peterson, Washington, D.C., U.S.A.

RESEARCH IN FARM MANAGEMENT

H. C. M. Case, University of Illinois, U.S.A., was chairman. W. H. Senior, Department of Agriculture for Scotland, opened the meeting with an account of the conditions which influenced farm management research in Scotland and gave an outline of the organization by the Department of Agriculture and the three Agricultural Colleges. A. D. Imper, North of Scotland College of Agriculture, outlined the work in the academic centres under the Scottish scheme. S. C. Hudson, Department of Agriculture, Ottawa, Canada, dealt with the work in Canada; M. Rolfes, University of Berlin, Germany, with the German organization; E. G. Misner, Cornell University, U.S.A., with the work organized in New York State by Cornell University; M. L. Mosher, College of Agriculture, Illinois, U.S.A., with developments in the State of Illinois; A. W. Menzies Kitchin, School of Agriculture, Cambridge, England, with the system and projects in England; E. B. Hill, Michigan State College, U.S.A., with projects in the State of Michigan. From a more general point of view G. A. Pond, University of Minnesota, U.S.A., gave the results of an analysis of the methods used in farm management studies in U.S.A. in the previous five years; A. W. Ashby, University College of Wales, Aberystwyth, Wales, discussed the aim of farm management work in fitting farms into the general economic environment; and J. A. Hopkins, State College of Agriculture, Ames, Iowa, U.S.A., dealt with the importance of having representative data.

RESEARCH IN MARKETING

A. M. Shaw, Director, Marketing Service, Department of Agriculture, Ottawa, Canada, was chairman, and M. P. Rasmussen, Cornell University, U.S.A., opened the session with a general review of the problems of marketing research under the main headings of (a) the purposes of market research; (b) the general methods of approach; and (c) the difficulties encountered and their possible solutions. The main points introduced by the opener and taken up by other speakers were as follows: (1) There is a primary difficulty in getting reliable and fairly complete information which is largely confidential and has to be taken from the books of various competing firms. The integrity of the research worker is of paramount importance. Some later speakers pointed to the value of marketing

boards and regulating authorities for making knowledge of distribution available. (2) There is a danger of research projects being too big in order to cover a large field, with the result that the time taken with the field work and analysis throws the report of results so late that it has little more than historic interest. Studies might be broken up into small logical units which could be finished within a reasonable time. One speaker noted that the taking of a series of small segments ran the risk of leaving the whole picture incomplete. (3) There is a constant pressure to make market research subservient to marketing policies instead of determining the facts as they are. One speaker emphasized that since government and other agencies were operating forces necessary for furthering collective policies, it was all the more necessary that the academic institutions should preserve the balance by studying how the interests of the individuals were affected by policy as well as by the ordinary movements of the market. The needs of consumers, the requirements and the operation of the market, the movement of goods, and the reaction of the requirements of the market on producers were the basic field of market studies.

Those taking part in discussion in addition to the opener were: F. F. Lininger, Pennsylvania State College, U.S.A.; C. G. McBride, College of Agriculture, Columbus, Ohio, U.S.A.; R. C. Ashby, University of Illinois, U.S.A.; F. M. Clement, British Columbia University, Vancouver, Canada; Leland Spencer, Cornell University, New York State, U.S.A.; W. J. Tawse, Quebec Department of Agriculture, Canada; L. J. Norton, University of Illinois, U.S.A.; W. W. Fetrow, Farm Credit Administration, Washington, D.C., U.S.A.; Miss R. L. Cohen, Agricultural Economics Research Institute, Oxford, England; and W. B. Silcox, Extension Service, Department of Agriculture, Washington, D.C., U.S.A.

THE SIGNIFICANCE OF ECONOMIC EXTENSION WORK IN AGRICULTURAL EDUCATION

S. J. Chagnon, Director of Extension Service, Quebec Department of Agriculture, Canada, was chairman. H. M. Dixon, Agricultural Economics Extension Section, Division of Co-operative Extension, U.S. Department of Agriculture, Washington, D.C., U.S.A., opened the discussion with an outline of the aims and methods of the Economic Extension Service in U.S.A. In summary, the ultimate objective of the service was to reach as great a number of individual farmers as possible and to assist them with their economic problems, and the central theme running through the entire

programme had been : (1) to help farm people to get a higher income and maintain a high standard of rural life; (2) to base recommendations on facts and the best information available; (3) to correlate the economic phase of the work with the entire extension programme; and (4) to assist in formulating and carrying out agricultural action programmes involving economic problems. Accounts of extension work in various states and countries were given as follows : Germany by M. Rolfes, University of Berlin, Germany; Poland by S. Schmidt, University of Cracow, Poland; Hungary by I. Szladits, Department of Agriculture, Budapest, Hungary; Canada by W. M. Drummond, Ontario Agricultural College, Guelph, Ont., Canada; and the State of Illinois by J. B. Cunningham, University of Illinois, U.S.A. H. R. Varney, Vermont, U.S.A., spoke on the Place of Land Use in Economic Extension Work.

RURAL REHABILITATION AND RESETTLEMENT

J. I. Falconer, Department of Rural Economics, University of Ohio, U.S.A., was chairman, and the discussion was opened by C. C. Taylor, Bureau of Agricultural Economics, Washington, D.C., U.S.A., who spoke on the problems of the resettlement and rehabilitation programmes of the Federal Farm Security Administration and pointed out the social principles involved. A. W. Menzies Kitchin, School of Agriculture, Cambridge, England, gave a critical survey of land settlement policy in Great Britain. H. Krause, Berlin, Germany, raised the importance of part-time holdings for industrial workers illustrated by the developments which had resulted from industrialization in Württemberg and the Saar Basin in Germany and the deliberate efforts along a similar line by the Ford firm in U.S.A. S. Higginbottom, University of Allahabad, India, referred to attempts by the Government to shift population in India from densely populated to more sparsely populated areas. Others who took up various points raised by these speakers were : R. A. Griffin, U.S. Department of Agriculture, Washington, D.C., U.S.A.; A. W. Ashby, University College of Wales, Aberystwyth, Wales; and W. Seedorf, University of Göttingen, Germany.

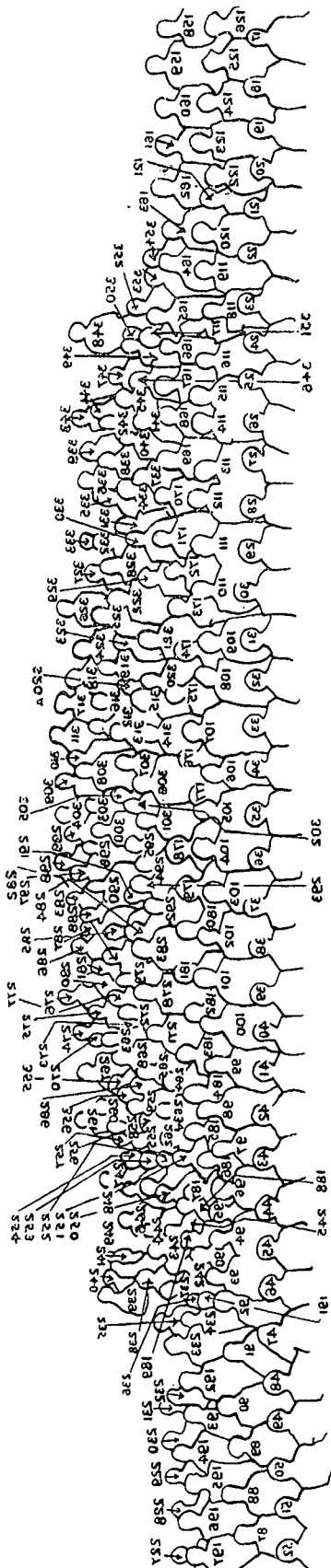
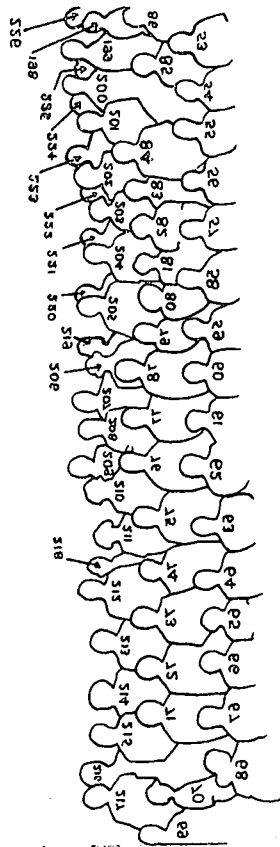
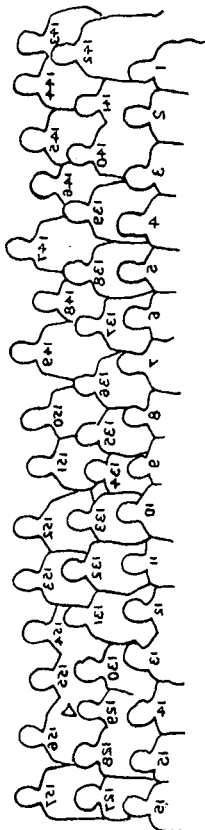
PRICE ANALYSIS

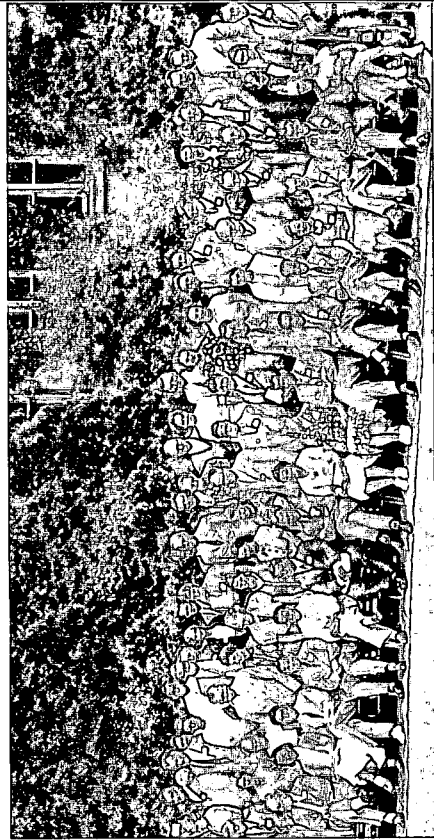
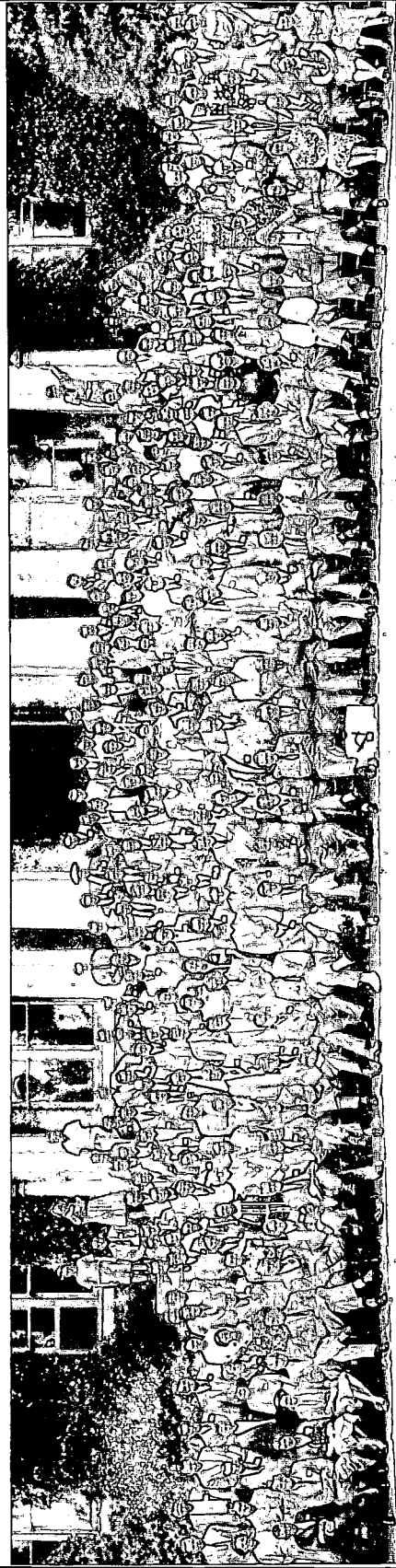
H. C. Taylor, Farm Foundation, Chicago, U.S.A., was chairman, and Elmer Working, University of Illinois, U.S.A., opened the discussion by dealing with some of the dangers associated with careless use of statistical techniques and by pointing to some of the 'frontiers' of price analysis. In a controlled economy there was necessity for

a greater emphasis on the analysis of effects of different price relationships. Under a condition of general governmental control, the effects of errors in interpretation may be much more serious than those resulting from faulty price analysis in a freely competitive economy. The discussion dealt mainly with detailed points of technique; the limitations encountered in certain types of analysis; and the validity of results from certain types of data. Those taking part in discussion in addition to the opener were: E. C. Hope, University of Saskatchewan, Canada; M. Ezekial, Agricultural Adjustment Administration, Washington, D.C., U.S.A.; Miss R. L. Cohen, Agricultural Economics Research Institute, Oxford, England; L. H. Bean, Agricultural Adjustment Administration, Washington, D.C., U.S.A.; H. Anderson, New York City, U.S.A.; A. B. Lewis, Farm Credit Administration, Washington, D.C., U.S.A.; V. P. Timoshenko, Food Research Institute, California, U.S.A.; and E. Jensen, Bureau of Agricultural Economics, Washington, D.C., U.S.A.

PHOTOGRAPH IDENTIFICATION

- | | | | | |
|----------------------------------------------------|--------------------------------------------|---------------------------------------------|----------------------------------------------|---------------------------------------------|
| 1. Geigel, Luis M. <i>Puerto Rico.</i> | 29. Skovgaard, K. K. <i>Denmark.</i> | 61. Schmutz, Mrs. C. <i>U.S.A.</i> | 91. Cockayne, Mrs. A. H. <i>New Zealand.</i> | 124. Clarke, G. B. <i>U.S.A.</i> |
| 2. Descartes, S. L. <i>Puerto Rico.</i> | 30. Young, E. C. <i>U.S.A.</i> | 62. Schmutz, D. C. <i>U.S.A.</i> | 92. Cockayne, A. H. <i>New Zealand.</i> | 125. Atkinson, Miss G. E. <i>Canada.</i> |
| 3. Youngblood, B. <i>U.S.A.</i> | 31. Lang, E. <i>Germany.</i> | 63. Major, T. G. <i>Canada.</i> | 94. Nelson, Mrs. Lowry. <i>U.S.A.</i> | 126. Shepherd, Miss M. <i>Canada.</i> |
| 4. Blaisdell, D. C. <i>U.S.A.</i> | 32. Booth, J. F. <i>Canada.</i> | 64. Dunnett, G. S. <i>United Kingdom.</i> | 95. Misner, Mrs. E. G. <i>U.S.A.</i> | 127. Hookham, Miss E. <i>Canada.</i> |
| 5. Fernandez y Fernandez, R. <i>Mexico.</i> | 33. Hobson, Asher. <i>U.S.A.</i> | 65. Waldron, M. E. <i>United Kingdom.</i> | 97. Lee, Schu Ching. <i>U.S.A.</i> | 128. Lininger, Jr. <i>U.S.A.</i> |
| 6. Bond, M. C. <i>U.S.A.</i> | 34. Meyer, K. <i>Berlin.</i> | 66. Grant, J. <i>United Kingdom.</i> | 98. Pierce, C. W. <i>U.S.A.</i> | 129. Lininger, Mrs. F. F. <i>U.S.A.</i> |
| 7. Gillett, R. L. <i>U.S.A.</i> | 35. Elmhirst, L. K. <i>United Kingdom.</i> | 67. Freifield, S. A. <i>Italy.</i> | 99. Beck, R. S. <i>U.S.A.</i> | 130. Lininger, F. F. <i>U.S.A.</i> |
| 8. Horning, F. J. <i>Canada.</i> | 36. Ladd, C. E. <i>U.S.A.</i> | 68. Ferguson, P. H. <i>Canada.</i> | 100. Varney, H. R. <i>U.S.A.</i> | 131. Ezekiel, Mordecai. <i>U.S.A.</i> |
| 9. Gagne, Charles. <i>Canada.</i> | 37. Ashby, A. W. <i>United Kingdom.</i> | 69. Ebling, W. H. <i>U.S.A.</i> | 102. Szladits, I. <i>Hungary.</i> | 132. Hope, E. C. <i>Canada.</i> |
| 10. Seelman-Eggebert, E. <i>Germany.</i> | 38. Schmidt, S. <i>Poland.</i> | 70. Haag, Mrs. H. M. <i>U.S.A.</i> | 103. Young, Mrs. H. N. <i>U.S.A.</i> | 133. Rutherford, J. B. <i>Canada.</i> |
| 11. Clement, F. M. <i>Canada.</i> | 39. Case, H. C. M. <i>U.S.A.</i> | 71. Hopper, W. C. <i>Canada.</i> | 104. Young, H. N. <i>U.S.A.</i> | 134. Fowke, V. C. <i>Canada.</i> |
| 12. Rolfes, M. <i>Germany.</i> | 40. Lattimer, J. E. <i>Canada.</i> | 72. Rasmussen, M. P. <i>U.S.A.</i> | 105. Spencer, Leland. <i>U.S.A.</i> | 135. Fowke, Mrs. V. C. <i>Canada.</i> |
| 13. von Schorlemer, Freiherr. <i>Germany.</i> | 41. Seedorf, W. <i>Germany.</i> | 73. Shaw, A. M. <i>Canada.</i> | 106. Spencer, Mrs. Leland. <i>U.S.A.</i> | 136. McArthur, I. S. <i>Canada.</i> |
| 14. Hood, K. <i>U.S.A.</i> | 42. Maxton, J. P. <i>United Kingdom.</i> | 74. Brittain, Mrs. W. H. <i>Canada.</i> | 107. Ahlgrimm, F. <i>Germany.</i> | 137. Silcox, W. B. <i>U.S.A.</i> |
| 15. Bronson, W. H. <i>U.S.A.</i> | 43. Currie, J. R. <i>United Kingdom.</i> | 75. Elvove, J. F. <i>U.S.A.</i> | 108. Higginbottom, Sam. <i>India.</i> | 138. Stout, W. B. <i>U.S.A.</i> |
| 16. Minderhoud, G. <i>Holland.</i> | 44. Monik, I. W. <i>Czechoslovakia.</i> | 76. Wibberley, G. P. <i>United Kingdom.</i> | 110. Leonard, H. W. <i>U.S.A.</i> | 139. Hornung, T. G. <i>U.S.A.</i> |
| 17. Scheltema, A. <i>Batavia, Java.</i> | 45. Antoniewski, S. <i>Poland.</i> | 77. Fetrow, Robert C. <i>U.S.A.</i> | 111. Taylor, H. B. <i>U.S.A.</i> | 140. Benton, A. H. <i>U.S.A.</i> |
| 18. Kitchin, A. W. <i>Menzies. United Kingdom.</i> | 46. Lamontagne, J. T. <i>Canada.</i> | 78. Filley, H. C. <i>U.S.A.</i> | 112. Getman, A. K. <i>U.S.A.</i> | 141. Wheeler, L. A. <i>U.S.A.</i> |
| 19. Currie, Mrs. J. R. <i>United Kingdom.</i> | 47. Summerby, R. <i>Canada.</i> | 79. Filley, Mrs. H. C. <i>U.S.A.</i> | 113. Jensen, Einer. <i>U.S.A.</i> | 142. Robinson, J. L. <i>U.S.A.</i> |
| 20. Shepherd, Mrs. C. Y. <i>Trinidad.</i> | 48. Toteff, A. U. <i>U.S.A.</i> | 80. Miss Filley. <i>U.S.A.</i> | 114. Hibbard, Mrs. B. H. <i>U.S.A.</i> | 143. Bowman, Chas. I. <i>U.S.A.</i> |
| 21. Shepherd, Dr. C. Y. <i>Trinidad.</i> | 49. Deering, Mrs. A. L. <i>U.S.A.</i> | 81. Miss Filley. <i>U.S.A.</i> | 115. Hibbard, B. H. <i>U.S.A.</i> | 144. Daugherty, M. M. <i>U.S.A.</i> |
| 22. Senior, W. H. <i>United Kingdom.</i> | 50. Deering, A. L. <i>U.S.A.</i> | 82. Johnson, Miss. E. A. <i>U.S.A.</i> | 116. Hobson, Mrs. Asher. <i>U.S.A.</i> | 145. Norton, L. J. <i>U.S.A.</i> |
| 23. Taylor, H. C. <i>U.S.A.</i> | 51. Lattimer, Mrs. J. E. <i>Canada.</i> | 83. Johnson, Mrs. E. C. <i>U.S.A.</i> | 117. Timoshenko, V. P. <i>U.S.A.</i> | 146. Norton, Mrs. L. J. <i>U.S.A.</i> |
| 24. Mann, A. R. <i>U.S.A.</i> | 52. Black, J. D. <i>U.S.A.</i> | 84. Johnson, E. C. <i>U.S.A.</i> | 118. Taylor, Miss E. <i>U.S.A.</i> | 147. Bell, E. W. <i>U.S.A.</i> |
| 25. Wilson, M. L. <i>U.S.A.</i> | 53. Sun, Miss D. C. H. <i>U.S.A.</i> | 85. Lawrence, Miss. <i>U.S.A.</i> | 119. Imper, A. D. <i>United Kingdom.</i> | 148. Bell, Mrs. E. W. <i>U.S.A.</i> |
| 26. Haataja, K. <i>Finland.</i> | 54. Pao-San-Ou. <i>China.</i> | 86. Johnson, Lois. <i>U.S.A.</i> | 120. Rokahr, Miss Mary. <i>U.S.A.</i> | 149. Bevan, L. A. <i>U.S.A.</i> |
| 27. Coke, J. <i>Canada.</i> | 55. Egoroff, P. P. <i>Bulgaria.</i> | 87. Lawrence, J. F. <i>U.S.A.</i> | 121. Lacy, Miss Mary G. <i>U.S.A.</i> | 150. Dubord, Henri. <i>Canada.</i> |
| 28. Windirsch, F. <i>Czechoslovakia.</i> | 56. Hsiang, Ching Yuen. <i>U.S.A.</i> | 87. Lawrence, Mrs. J. F. <i>U.S.A.</i> | 122. Sherman, Miss C. B. <i>U.S.A.</i> | 151. Boucher, G. F. <i>Canada.</i> |
| | 57. Gagnon, O. <i>Canada.</i> | 88. Burns, R. H. <i>U.S.A.</i> | 123. Korpela, E. <i>Finland.</i> | 152. Arsenaull, Lucien. <i>Canada.</i> |
| | 58. Gagnon, O. <i>Canada.</i> | 89. Burns, Mrs. R. H. <i>U.S.A.</i> | | 153. van der Merwe, C. <i>South Africa.</i> |
| | 59. Drummond, W. M. <i>Canada.</i> | 90. Carrigan, J. E. <i>U.S.A.</i> | | 154. Bourque, Lionel. <i>Canada.</i> |
| | 60. Drummond, Mrs. W. M. <i>Canada.</i> | | | 155. Hoffsommer, Harold. <i>U.S.A.</i> |
| | | | | 156. Doyle, Paul E. <i>Canada.</i> |





157. Cooper, Maurice R. *U.S.A.*
158. Richards, P. *U.S.A.*
159. Working, E. *U.S.A.*
160. Allbaugh, L. G. *U.S.A.*
161. Parent, N. *Canada.*
162. Lecuyer, R. *Canada.*
165. Talbot, E. J. *U.S.A.*
166. Talbot, Mrs. E. J. *U.S.A.*
167. Hertel, J. P. *U.S.A.*
168. Hertel, Mrs. J. P. *U.S.A.*
169. Reed, Mrs. D. W. *U.S.A.*
170. Reed, D. W. *U.S.A.*
171. Wilson, C. F. *Canada.*
172. Wilson, Mrs. C. F. *Canada.*
173. MacLellan, Miss M. E. *Canada.*
174. Niehaus, H. *Germany.*
175. Wolff, G. *Germany.*
176. Gabriel, H. S. *U.S.A.*
177. Gabriel, Mrs. H. S. *U.S.A.*
178. Vaughan, L. M. *U.S.A.*
179. Matzen, E. H. *U.S.A.*
180. van Wagenen, A. *U.S.A.*
181. Miller, H. I. *U.S.A.*
182. Hansas, A. J. *U.S.A.*
183. Ferguson, D. B. *U.S.A.*
184. Buchanan, M. F. *U.S.A.*
185. Ackerman, J. *U.S.A.*
186. Nelson, Lowry. *U.S.A.*
187. Tyler, H. S. *U.S.A.*
188. Bratton, Arthur. *U.S.A.*
189. Becker, C. *U.S.A.*
190. Misner, E. G. *U.S.A.*
191. Ballinger, R. A. *U.S.A.*
192. Hind, E. Cora. *Canada.*
193. Stanley, Miss L. *Canada.*
194. Christy, D. F. *U.S.A.*
195. Christy, Mrs. D. F. *U.S.A.*
196. Riley, C. W. *Canada.*
197. Riley, Mrs. C. W. *Canada.*
198. Chown, Mrs. W. F. *Canada.*
199. Chown, W. F. *Canada.*
200. Davison, W. *Canada.*
201. Davison, Mrs. W. *Canada.*
202. Duncan, J. F. *United Kingdom.*
203. Duncan, Mrs. J. F. *United Kingdom.*
204. Cohen, Miss R. *United Kingdom.*
205. McBride, C. G. *U.S.A.*
206. Jobson, Miss B. *United Kingdom.*
207. Jesness, O. B. *U.S.A.*
208. Bowman, Mrs. Chas. *U.S.A.*
209. Hart, V. B. *U.S.A.*
210. Hart, Mrs. V. B. *U.S.A.*
211. Ronk, Mrs. S. E. *U.S.A.*
212. Ronk, S. E. *U.S.A.*
213. Brown, A. H. *Canada.*
214. Peterson, Mrs. G. A. *U.S.A.*
215. Peterson, G. A. *U.S.A.*
216. Peters, K. A. H. *Holland.*
217. Haag, H. M. *U.S.A.*
218. Bond, M. C. *U.S.A.*
219. Roth, W. J. *U.S.A.*
220. Taylor, C. C. *U.S.A.*
221. Lewis, A. B. *U.S.A.*
222. Scoville, G. P. *U.S.A.*
223. Parsons, M. S. *U.S.A.*
224. Sharp, Mrs. M. *Canada.*
225. Chew, A. P. *U.S.A.*
226. Sharp, R. W. *Canada.*
227. Spence, C. C. *Canada.*
228. Coddington, Mrs. J. W. *U.S.A.*
229. Coddington, J. W. *U.S.A.*
230. Stewart, Alec. *Canada.*
231. Strang, Mrs. Marion *Canada.*
232. Cunningham, J. B. *U.S.A.*
233. Cunningham, Mrs. J. B. *U.S.A.*
234. Gilman, Mrs. Virgil. *U.S.A.*
235. Gilman, Virgil. *U.S.A.*
236. Parsons, Mrs. K. *U.S.A.*
237. Burdick, R. T. *U.S.A.*
238. Gabbard, L. P. *U.S.A.*
239. Evans, M. G. *U.S.A.*
242. Hitchcock, J. A. *U.S.A.*
243. Merchant, C. H. *U.S.A.*
244. Hare, H. R. *Canada.*
245. Krause, H. *Germany.*
246. Nyhus, Paul. *Argentina.*
247. Haythorne, Mrs. G. V. *Canada.*
248. Schruppf, W. E. *U.S.A.*
249. Rauchenstein, Mrs. E. *U.S.A.*
250. Freund, R. *Sweden.*
251. Underwood, F. L. *U.S.A.*
252. Rauchenstein, E. *U.S.A.*
253. Baudelin, Lillian. *U.S.A.*
254. McIntire, Smith. *U.S.A.*
256. Fetrow, Mrs. W. W. *U.S.A.*
257. Ladd, Mrs. C. E. *U.S.A.*
258. Bean, L. H. *U.S.A.*
259. Fetrow, W. W. *U.S.A.*
260. Johnston, Miss Islay. *Canada.*
261. Sim, R. A. *Canada.*
262. Warren, Mrs. Stanley. *U.S.A.*
263. Pond, Norman. *U.S.A.*
264. Love, H. M. *U.S.A.*
265. Berg, Herbert A. *U.S.A.*
266. Doneth, J. C. *U.S.A.*
267. Craig, G. H. *Canada.*
268. Wehrwein, G. S. *U.S.A.*
269. Stewart, Andrew. *Canada.*
270. Shaw, Miss A. *Canada.*
271. Kieffer, D. C. *U.S.A.*
272. Hill, E. B. *U.S.A.*
273. Pond, G. A. *U.S.A.*
274. Haythorne, G. V. *Canada.*
275. Craig, Mrs. G. H. *Canada.*
276. Pfeiderer, O. *Germany.*
277. Patterson, H. L. *Canada.*
278. Falconer, J. I. *U.S.A.*
279. Perregaux, E. A. *U.S.A.*
280. Anderson, Miss Elna. *U.S.A.*
281. Skey, B. P. *Canada.*
282. Elmhirst, Richard. *U.S.A.*
283. Elliott, F. F. *U.S.A.*
284. Munger, Miss. *U.S.A.*
285. Munger, H. B. *U.S.A.*
286. Anderson, Hilding. *U.S.A.*
287. Wilson, R. V. *U.S.A.*
288. Rossiter, W. *U.S.A.*
289. Rossiter, Mrs. F. J. *U.S.A.*
290. Nelson, Peter. *U.S.A.*
291. Munger, Mrs. H. B. *U.S.A.*
292. Hopkins, J. A. *U.S.A.*
293. Mosher, M. L. *U.S.A.*
294. Stine, O. C. *U.S.A.*
295. Hurt, Mrs. B. R. *U.S.A.*
296. Stover, H. J. *U.S.A.*
297. Williamson, P. S. *U.S.A.*
298. Rossiter, F. J. *U.S.A.*
299. Powell, W. *U.S.A.*
300. Saville, R. J. *U.S.A.*
301. Wilcox, W. W. *U.S.A.*
302. Hurt, B. R. *U.S.A.*
304. Blow, Thos. H. *U.S.A.*
305. Stockmann, G. *Germany.*
306. Griffin, R. A. *U.S.A.*
307. Curtiss, W. M. *U.S.A.*
309. Loveless, W. G. *U.S.A.*
310. Warren, S. *U.S.A.*
311. Hudson, S. C. *Canada.*
312. Greig, R. G. *U.S.A.*
313. Criswell, J. F. *U.S.A.*
314. Maakestad, W. T. *U.S.A.*
315. Wilmanns, W. *Germany.*
316. Raeburn, J. R. *United Kingdom.*
317. Ness, A. R. *Canada.*
318. Colon-Torres, R. *Puerto Rico.*
319. Roy, L. C. *Canada.*
320. Dixon, H. M. *U.S.A.*
320 A. Hull, J. T. *Canada.*
321. Morgan, W. E. *U.S.A.*
322. Carstens, Dr. *Germany.*
323. Johnston, J. *Eire.*
324. Griffin, S. *Canada.*
325. Tawse, W. J. *Canada.*
326. Kalbfleisch, W. *Canada.*
327. Heimpel, L. *Canada.*
328. von Bruhl, Graf. *Germany.*
329. Catherwood, Mrs. M. P. *U.S.A.*
330. Catherwood, M. P. *U.S.A.*
331. McGiffin, J. S. *Canada.*
332. Foster, M. *Canada.*
334. Gosselin, A. *Canada.*
335. Campbell, B. A. *Canada.*
336. Mackenroth, G. *Germany.*
337. Lemieux, O. *Canada.*
338. Parker, C. V. *Canada.*
339. Kirchoff, Mrs. *Canada.*
340. Wright, K. T. *U.S.A.*
341. White, O. H. *U.S.A.*
342. Collins, G. P. *U.S.A.*
343. Rosenbrock, D. *Germany.*
344. Koenig, K. *U.S.A.*
345. Lindsey, A. H. *U.S.A.*
346. Hurd, T. M. *U.S.A.*
347. May, C. O. *U.S.A.*
348. Peterson, A. G. *U.S.A.*
349. Creek, C. R. *U.S.A.*
353. Hedlund, G. W. *U.S.A.*
354. Beilby, O. J. *United Kingdom.*
355. de Wees, Miss Anne. *U.S.A.*
356. Bean, Mrs. Louis H. *U.S.A.*

REGISTER OF MEMBERS AND VISITORS PRESENT
 AT FIFTH INTERNATIONAL CONFERENCE OF
 AGRICULTURAL ECONOMISTS, MACDONALD
 COLLEGE, P.Q., CANADA

- ACKERMAN, JOSEPH. Urbana, Ill., U.S.A.
 AHLGRIMM, F. Berlin, Germany.
 ALLARD, H. J. Chester, Pa., U.S.A.
 ALLBAUGH, L. G., and Mrs. ALLBAUGH. Ames, Iowa, U.S.A.
 ALSENSTEIN, LEON, and Mrs. ALSENSTEIN. Havana, Cuba.
 ANDERSON, DON S., and Mrs. ANDERSON. Madison, Wisc., U.S.A.
 ANDERSON, Miss ELNA. Washington, D.C., U.S.A.
 ANDERSON, HILDING. New York, N.Y., U.S.A.
 ANTONIEWSKI, S. Warsaw, Poland.
 ARMSTRONG, P. C., and Mrs. ARMSTRONG. Montreal, P.Q., Canada.
 ASHBY, A. W., and Mrs. ASHBY, Aberystwyth, Wales.
 ASHBY, R. C. Urbana, Ill., U.S.A.
 ATHERTON, R. N., and Mrs. ATHERTON. Orono, Maine, U.S.A.
 ATKINSON, Miss. Ottawa, Ont., Canada.
 BALLINGER, R. A., and Mrs. BALLINGER. Baton Rouge, La., U.S.A.
 BARTON, H. Ottawa, Ont., Canada.
 BATEMAN, J. W. University, La., U.S.A.
 BEAN, L. H., and Mrs. BEAN. Washington, D.C., U.S.A.
 BECK, F. V. Canton, N.Y., U.S.A.
 BECK, R. S. Ithaca, N.Y., U.S.A.
 BEILBY, O. J. Oxford, England.
 BELL, E. W., and Mrs. BELL. Amherst, Mass., U.S.A.
 BENTON, A. H., and Mrs. BENTON. Washington, D.C., U.S.A.
 BERG, H. A., and Mrs. BERG. East Lansing, Mich., U.S.A.
 BEVAN, L. A., and Mrs. BEVAN. New Brunswick, N.J., U.S.A.
 BLACK, JOHN D. Cambridge, Mass., U.S.A.
 BLAISDELL, D. C. Washington, D.C., U.S.A.
 BLANFORD, CHARLES, and Mrs. BLANFORD. Ithaca, N.Y., U.S.A.
 BLIVEN, BRUCE. New York, N.Y., U.S.A.
 BLONDIN, E. Burlington, Vt., U.S.A.
 BLOW, T. H. St. Johnsbury, Vt., U.S.A.
 BOIS, H. C. Montreal, P.Q., Canada.
 BOND, M. C. Ithaca, N.Y., U.S.A.
 BOOTH, J. F., and Mrs. BOOTH. Ottawa, Ont., Canada.
 BOUCHER, G. P. Ottawa, Ont., Canada.
 BOURNE, E. R. Sheffield, Mass., U.S.A.
 BOWMAN, C. I., and Mrs. BOWMAN. Springfield, Mass., U.S.A.
 BRANNEN, C. O., and Mrs. BRANNEN. Fayetteville, Ark., U.S.A.
 BRATTON, C. A., Ithaca, N.Y., U.S.A.
 BRITTAIN, Mrs. W. H. Macdonald College, P.Q., Canada.
 BRONSON, W. H., and Mrs. BRONSON. Charlestown, Mass., U.S.A.
 BROWN, A. H. Ottawa, Ont., Canada.
 BROWN, A. H. Hayling Island, England.
 VON BRUHL, GRAF. Pforten, Germany.
 BURDICK, R. T. Fort Collins, Colo., U.S.A.
 BURNS, R. H., and Mrs. BURNS. Bangor, Maine, U.S.A.
 BURRITT, M. C., and Mrs. BURRITT. Buffalo, N.Y., U.S.A.
 CAMPBELL, B. A. Ottawa, Ont., Canada.
 CARRIGAN, J. E. Burlington, Vt., U.S.A.
 CARSTENS, Dr. Hohenheim, Germany.
 CASE, H. C. M. Urbana, Ill., U.S.A.
 CATHERWOOD, M. P., and Mrs. CATHERWOOD. Ithaca, N.Y., U.S.A.
 CHAGNON, S. J. Quebec, P.Q., Canada.

- CHEW, A. P. Washington, D.C., U.S.A.
CHOWN, W. F., and Mrs. CHOWN. Ottawa, Ont., Canada.
CHRISTY, D. F., and Mrs. CHRISTY. Washington, D.C., U.S.A.
CLARKE, G. B. Storrs, Conn., U.S.A.
CLEMENT, F. M. Vancouver, B.C., Canada.
COCKAYNE, A. H., and Mrs. COCKAYNE. Wellington, New Zealand.
CODDINGTON, J. W., and Mrs. CODDINGTON. College Park, Md., U.S.A.
COHEN, Miss RUTH. Oxford, England.
COKE, J., and Mrs. COKE. Ottawa, Ont., Canada.
COLLIER, G. W., and Mrs. COLLIER. Washington, D.C., U.S.A.
COLLINS, G. P. Urbana, Ill., U.S.A.
COLON-TORRES, R. Rio Piedras, Puerto Rico.
CONACHER, H. M. Edinburgh, Scotland.
COOPER, M. R. Washington, D.C., U.S.A.
CRAIG, G. H., and Mrs. CRAIG. Cambridge, Mass., U.S.A.
CRAIG, R. D. Ottawa, Ont., Canada.
CREEK, C. R. Amherst, Mass., U.S.A.
CRISWELL, J. F., and Mrs. CRISWELL. Raleigh, N.C., U.S.A.
CUMMINGS, ISABEL J. Ottawa, Ont., Canada.
CUNNINGHAM, J. B., and Mrs. CUNNINGHAM. Urbana, Ill., U.S.A.
CUNNINGHAM, L. C., and Mrs. CUNNINGHAM. Ithaca, N.Y., U.S.A.
CURRIE, J. R., and Mrs. CURRIE. Totnes, Devon, England.
CURTISS, W. M. Ithaca, N.Y., U.S.A.
DAUGHERTY, M. M., and Mrs. DAUGHERTY. Newark, Delaware, U.S.A.
DAVIS, JACKSON. New York, N.Y., U.S.A.
DAVISON, W., and Mrs. DAVISON. Blenheim, Ont., Canada.
DAWSON, C. A. Montreal, P.Q., Canada.
DEERING, A. L., and Mrs. DEERING. Orono, Maine, U.S.A.
DERMINE, PIERRE. Oka, P.Q., Canada.
DESCARTES, S. L. Puerto Rico.
DILLON, W. R. Montreal, P.Q., Canada.
DIXON, H. M. Washington, D.C., U.S.A.
DONETH, J. C. East Lansing, Mich., U.S.A.
DOW, G. F., and Mrs. DOW. Orono, U.S.A.
DOYLE, PAUL E. Montreal, P.Q., Canada.
DRUMMOND, W. M., and Mrs. DRUMMOND. Guelph, Ont., Canada.
DUBORD, H. Champlain, P.Q., Canada.
DUNCAN, J. F., and Mrs. DUNCAN. Airdrie, Scotland.
DUNNETT, G. S. London, England.
DURYEE, WM. B. New York, N.Y., U.S.A.
EBLING, W. H., and Mrs. EBLING. Madison, Wisc., U.S.A.
EGOROFF, P. P. Sofia, Bulgaria.
ELICKSON, J. C., and Mrs. ELICKSON. Washington, D.C., U.S.A.
ELLIOTT, F. F. Washington, D.C., U.S.A.
ELMHIRST, L. K. Totnes, Devon, England.
ELMHIRST, R. Chicago, Ill., U.S.A.
ELVOVE, J. F. Amherst, Mass., U.S.A.
EVANS, M. G. Washington, D.C., U.S.A.
EZEKIEL, M., and Mrs. EZEKIEL. Washington, D.C., U.S.A.
FALCONER, J. I., and Mrs. FALCONER. Columbus, Ohio, U.S.A.
FERGUSON, D. B. Ithaca, N.Y., U.S.A.
FERGUSON, P. H. Ottawa, Ont., Canada.
FERNANDEZ Y FERNANDEZ, R. Mexico City, Mexico.
FETROW, W. W., and Mrs. FETROW. Washington, D.C., U.S.A.
FILLEY, H. C., and Mrs. FILLEY. Lincoln, Nebraska, U.S.A.
FOWKE, V. C., and Mrs. FOWKE. Saskatoon, Sask., Canada.
FREIFELD, S. A. Rome, Italy.
FREUND, R. Appelviken, Sweden.
GABBARD, L. P. College Station, Texas, U.S.A.
GABRIEL, H. S., and Mrs. GABRIEL. Newark, Del., U.S.A.
GAGNE, C. Ste. Anne de la Pocatière, P.Q., Canada.
GAGNON, O. La Trappe, P.Q., Canada.

- GEAUGUE, E. P. San Francisco, Calif., U.S.A.
 GEIGEL, LOUIS M. Ithaca, N.Y., U.S.A.
 GEISZLER, G. N. Fargo, N.D., U.S.A.
 GETMAN, A. K. Albany, N.Y., U.S.A.
 GILLETT, R. L. Delmar, N.Y., U.S.A.
 GILMAN, VIRGIL, and Mrs. GILMAN. Washington, D.C., U.S.A.
 GORSKI, R. S. New York, N.Y., U.S.A.
 GRANT, JAMES. Oxford, England.
 GRAY, L. C. Washington, D.C., U.S.A.
 GREIG, R. G. Hudson, N.Y., U.S.A.
 GREST, E. G., and Mrs. GREST. Arlington, Va., U.S.A.
 GRIFFIN, R. A. Washington, D.C., U.S.A.
 GRIFFIN, S. E. Ottawa, Ont., Canada.
 GROVE, E. W. Washington, D.C., U.S.A.
 HAAG, H. M. Columbia, Mo., U.S.A.
 HAATAJA, K. Helsinki, Finland.
 HALLMAN, E. C. Waterloo, Ont., Canada.
 HANGAS, A. J. Ithaca, N.Y., U.S.A.
 HARE, H. R. Ottawa, Ont., Canada.
 HART, V. B., and Mrs. HART. Ithaca, N.Y., U.S.A.
 HARPER, F. A., and Mrs. HARPER. Ithaca, N.Y., U.S.A.
 HAYTHORNE, G. V., and Mrs. HAYTHORNE. Halifax, N.S., Canada.
 HEDLUND, G. W. Ithaca, N.Y., U.S.A.
 HERTEL, J. P., and Mrs. HERTEL. Ithaca, N.Y., U.S.A.
 HIBBARD, B. H., and Mrs. HIBBARD. Madison, Wisc., U.S.A.
 HIGGINBOTTOM, SAM. India.
 HILL, E. B., and Mrs. HILL. East Lansing, Mich., U.S.A.
 HIND, Dr. E. CORA. Winnipeg, Man., Canada.
 HITCHCOCK, J. A., and Mrs. HITCHCOCK. Burlington, Vt., U.S.A.
 HOBSON, Asher, and Mrs. HOBSON. Madison, Wisc., U.S.A.
 HODGE, C. H. Toronto, Ont., Canada.
 HOFFSOMER, H., and Mrs. HOFFSOMER. University, La., U.S.A.
 HOLE, ERLING, and Mrs. HOLE. Arlington, Va., U.S.A.
 HOOD, KENNETH. State College, Pa., U.S.A.
 HOOKHAM, Miss. Macdonald College, P.Q., Canada.
 HOPE, E. C. Saskatoon, Sask., Canada.
 HOPKINS, J. A. Ames, Iowa, U.S.A.
 HOPPER, W. C., and Mrs. HOPPER. Ottawa, Ont., Canada.
 HORNING, F. J., and Mrs. HORNING. Montreal, P.Q., Canada.
 HORNUNG, T. G., and Mrs. HORNUNG. Lafayette, Ind., U.S.A.
 HSIANG, CHING YUEN. Madison, Wisc., U.S.A.
 HUDSON, S. C. Ottawa, Ont., Canada.
 HULL, J. T. Winnipeg, Man., Canada.
 HURD, T. M. Ithaca, N.Y., U.S.A.
 HURT, B. R., and Mrs. HURT. Urbana, Ill., U.S.A.
 IMPER, A. D. Aberdeen, Scotland.
 JACKSON, GEO. Ottawa, Ont., Canada.
 JAMES, FRED. Ottawa, Ont., Canada.
 JARVIS, T. Ottawa, Ont., Canada.
 JENSEN, EINAR. Washington, D.C., U.S.A.
 JESNESS, O. B., and Mrs. JESNESS. St. Paul, Minn., U.S.A.
 JOBSON, Miss B. Airdrie, Scotland.
 JOHNSON, E. C., and Mrs. JOHNSON. Washington, D.C., U.S.A.
 JOHNSTON, Miss C. I. Ottawa, Ont., Canada.
 JOHNSTON, JOSEPH. Dublin, Eire.
 JONES, M. D., and Mrs. JONES. Orono, Maine, U.S.A.
 DE JONGH, T. W. New York, N.Y., U.S.A.
 KEEPPER, W. E. Ithaca, N.Y., U.S.A.
 KIEFFER, D. C., and Mrs. KIEFFER. Bethesda, Md., U.S.A.
 KIRCHOFF, Mrs. K. Montreal, P.Q., Canada.
 KITCHIN, A. W. MENZIES. Cambridge, England.
 KORPELA, E. Helsinki, Finland.
 KRAEMER, Jos. Upper Montclair, N.J., U.S.A.
 KRAUSE, H. Berlin, Germany.
 LACY, Miss M. G. Washington, D.C., U.S.A.
 LADD, C. E., and Mrs. LADD. Ithaca, N.Y., U.S.A.
 LADEJINSKY, W. Washington, D.C., U.S.A.

- LAMONTAGNE, J. T., and Mrs. LAMONTAGNE. Quebec, P.Q., Canada.
- LANG, EMIL. Königsberg, Pr., Germany.
- LATTIMER, J. E., and Mrs. LATTIMER. Macdonald College, P.Q., Canada.
- LAWRENCE, J. F., and Mrs. LAWRENCE. Lincoln, Nebraska, U.S.A.
- LECUYER, R. Quebec, P.Q., Canada.
- LEE, A. T. M., and Mrs. LEE. New Brunswick, N.J., U.S.A.
- LEE, J. L. Baton Rouge, La., U.S.A.
- LEE, SCHU-CHING. Madison, Wisc., U.S.A.
- LEITCH, A., and Mrs. LEITCH. Guelph, Ont., Canada.
- LEMIEUX, O. A., and Mrs. LEMIEUX. Ottawa, Ont., Canada.
- LEONARD, H. W., and Mrs. LEONARD. Lafayette, Ind., U.S.A.
- LEWIS, A. B., and Mrs. LEWIS. Washington, D.C., U.S.A.
- LEWIS, JOHN. Emsworth, Hants, England.
- LINDSEY, A. H. Amherst, Mass., U.S.A.
- LININGER, F. F., and Mrs. LININGER. State College, Pa., U.S.A.
- LÖHR, Dr. LUDWIG. Wien, Germany.
- LOVE, H. M. Blacksburg, Va., U.S.A.
- LOVELESS, W. Montpelier, Vt., U.S.A.
- LUCAS, B. F. Ithaca, N.Y., U.S.A.
- MAAKESTAD, W. T., and Mrs. MAAKESTAD. Ames, Iowa, U.S.A.
- MACKENROTH, G. Kiel, Germany.
- MAJOR, T. G. Ottawa, Ont., Canada.
- MANN, A. R. New York, N.Y., U.S.A.
- MANNING, E. S. Toronto, Ont., Canada.
- MARTIN, R. Montreal, P.Q., Canada.
- MASTER, O. Ottawa, Ont., Canada.
- MATZEN, E. H. Ithaca, N.Y., U.S.A.
- MAXTON, J. P. Oxford, England.
- MAY, CLYDE O. East Lansing, Mich., U.S.A.
- MERCHANT, C. H., and Mrs. MERCHANT. Orono, Maine, U.S.A.
- MERWE, C. VAN DER. Ithaca, N.Y., U.S.A.
- MEYER, K. Berlin, Germany.
- MILLER, H. I. Burlington, Vt., U.S.A.
- MILLER, R. E. Washington, D.C., U.S.A.
- MILLER, S. R. Orono, Maine, U.S.A.
- MINDERHOUD, G. Wageningen, Netherlands.
- MISNER, E. G. Ithaca, N.Y., U.S.A.
- MONIK, I. W. Praha, Czechoslovakia.
- MORGAN, W. E., and Mrs. MORGAN. College Station, Texas, U.S.A.
- MOSHER, M. L. Urbana, Ill., U.S.A.
- MUNGER, H. B., and Mrs. MUNGER. Springfield, Mass., U.S.A.
- MACCLELLAN, M. E. Ottawa, Ont., Canada.
- MCARTHUR, I. S. Ottawa, Ont., Canada.
- MCBRIDE, C. G. Columbus, Ohio, U.S.A.
- MCCONNELL, J. A., and Mrs. MCCONNELL. Ithaca, N.Y., U.S.A.
- MCDONALD, D. M. Montreal, P.Q., Canada.
- MCGIFFIN, J. S. Ottawa, Ont., Canada.
- MCINTIRE, SMITH C., and Mrs. MCINTIRE. Orono, Maine, U.S.A.
- MCKEE, D. Toronto, Ont., Canada.
- MCQUAT, L. C. Montreal, P.Q., Canada.
- MCWILLIAMS, R. C. St. Albans, Vt., U.S.A.
- NELSON, LOWRY, and Mrs. NELSON. St. Paul, Minn., U.S.A.
- NELSON, PETER. Stillwater, Okla., U.S.A.
- NICHOLLS, W. D., and Mrs. NICHOLLS. Lexington, Ky., U.S.A.
- NIEDERFRANK, D., and Mrs. NIEDERFRANK. Orono, Maine, U.S.A.
- NIEHAUS, H. Rostock, Germany.
- NORTON, L. J., and Mrs. NORTON. Urbana, Ill., U.S.A.
- NYHUS, P. Buenos Aires, Argentina.
- PACKARD, A. H. Burlington, Vt., U.S.A.
- PAO-SAN-OU. Kwangsi, China.
- PARENT, N. Quebec, P.Q., Canada.
- PARKER, C. V. Ottawa, Ont., Canada.
- PARSONS, K. H., and Mrs. PARSONS. Madison, Wisc., U.S.A.
- PARSONS, M. S., and Mrs. PARSONS. Washington, D.C., U.S.A.
- PATTERSON, H. L. Ottawa, Ont., Canada.
- PEARSON, F. A., and Mrs. PEARSON. Ithaca, N.Y., U.S.A.

- PERREGAUX, E. A. Storrs, Conn., U.S.A.
 PETERS, K. A. H., and Mrs. PETERS.
 Washington, D.C., U.S.A.
 PETERSON, A. G. Washington, D.C.,
 U.S.A.
 PETERSON, G. A., and Mrs. PETERSON.
 Washington, D.C., U.S.A.
 PFLEIDERER, O. Berlin, Germany.
 PIERCE, C. W. State College, Pa.,
 U.S.A.
 POND, G. A., and Mrs. POND. St.
 Paul, Minn., U.S.A.
 POWELL, W. Ithaca, N.Y., U.S.A.
 PROULX, A. Quebec, P.Q., Canada.

 RAEBURN, J. R. Oxford, England.
 RASMUSSEN, M. P., and Mrs. RAS-
 MUSEN. Ithaca, N.Y., U.S.A.
 RAUCHENSTEIN, EMIL., and Mrs.
 RAUCHENSTEIN. Washington, D.C.,
 U.S.A.
 REED, D. W., and Mrs. REED. Orono,
 Maine, U.S.A.
 REYBOLDS, J. B. Port Hope, Ont.,
 Canada.
 RICHARDS, A. E. Ottawa, Ont.,
 Canada.
 RICHARDS, P. Washington, D.C.,
 U.S.A.
 RILEY, C. W., and Mrs. RILEY.
 Guelph, Ont., Canada.
 ROBINSON, J. L., and Mrs. ROBINSON.
 Washington, D.C., U.S.A.
 ROKAHR, Miss MARY. Washington,
 D.C., U.S.A.
 ROLFES, M. Berlin, Germany.
 RONK, S. E., and Mrs. RONK. Spring-
 field, Mass., U.S.A.
 ROSENBROCK, D. Berlin, Germany.
 ROGERS, G. H. Kingston, Ont.,
 Canada.
 ROSSITER, F. J., and Mrs. ROSSITER.
 Washington, D.C., U.S.A.
 ROTH, W. J., and Mrs. ROTH.
 Washington, D.C., U.S.A.
 ROWE, J. B. Edmonton, Alta., Canada.
 RUTHERFORD, J. B. Ottawa, Ont.,
 Canada.

 SARGEANT, W. Barrie, Ont., Canada.
 SAVILLE, R. J. Baton Rouge, La.,
 U.S.A.
 SCHELTEMA, A. Batavia, Java.
 SCHMIDT, S. Krakow, Poland.
 SCHMUTZ, CLARENCE, and Mrs.
 SCHMUTZ. Ithaca, N.Y., U.S.A.

 VON SCHORLEMER-LIESER, FREIHERR.
 Lieser-Mosel, Germany.
 SCHRUMPF, W. E., and Mrs.
 SCHRUMPF. Orono, Maine, U.S.A.
 SHERMAN, Miss C. B. Washington,
 D.C., U.S.A.
 SCOVILLE, G. P., and Mrs. SCOVILLE.
 Ithaca, N.Y., U.S.A.
 SEEDORF, W. Göttingen, Germany.
 SEELMANN-EGGEBERT, E. Berlin, Ger-
 many.
 SENIOR, W. H. Edinburgh, Scotland.
 SHARP, M. W., and Mrs. SHARP.
 Winnipeg, Man., Canada.
 SHAW, A. M. Ottawa, Ont., Canada.
 SHEPHERD, C. Y., and Mrs. SHEP-
 HERD. Trinidad, B.W.I.
 SILCOX, W. B. Washington, D.C.,
 U.S.A.
 SKEY, B. P. Toronto, Ont., Canada.
 SKOVGAARD, K. K. København,
 Denmark.
 SPENCE, C. C. Saskatoon, Sask.,
 Canada.
 SPENCER, LELAND, and Mrs. SPENCER.
 Ithaca, N.Y., U.S.A.
 STANLEY, L. Washington, D.C.,
 U.S.A.
 STEWART, ALEX. Guelph, Ont.,
 Canada.
 STEWART, A. Edmonton, Alta.,
 Canada.
 STINE, O. C. Washington, D.C.,
 U.S.A.
 STOCKMANN, G. Tübingen, Germany.
 STOUT, W. B. Washington, D.C.,
 U.S.A.
 STOVER, H. J. Chicago, Ill., U.S.A.
 STRAIT, E. D., and Mrs. STRAIT.
 Springfield, Mass., U.S.A.
 SUMMERBY, R. Macdonald College,
 P.Q., Canada.
 SUN, Miss D. C. H. South Hadley,
 Mass., U.S.A.
 SWAINE, J. M. Ottawa, Ont., Canada.
 SWEET, C. Ottawa, Ont., Canada.
 SZLADITZ, IMRE. Budapest, Hungary.

 TALBOT, E. J., and Mrs. TALBOT.
 Laramie, Wyoming, U.S.A.
 TAYLOR, C. C. Washington, D.C.,
 U.S.A.
 TAYLOR, H. B. West Lafayette, Ind.,
 U.S.A.
 TAYLOR, H. C., and Miss TAYLOR.
 Chicago, Ill., U.S.A.

- TENNANT, J. L. Kingston, R.I., U.S.A.
- TETRO, R. C. Amherst, Mass., U.S.A.
- THOMSON, E. H., and Mrs. THOMSON. Springfield, Mass., U.S.A.
- TIMOSHENKO, V. P., Stanford University, Calif., U.S.A.
- TOTEFF, A. U. Sofia, Bulgaria.
- TRENT, D. P. Washington, D.C., U.S.A.
- TRUEMAN, H. L. Ottawa, Ont., Canada.
- TURGEON, L., and Mrs. TURGEON. Quebec, P.Q., Canada.
- TYLER, H. S. Ithaca, N.Y., U.S.A.
- UNDERWOOD, F. L. Blacksburg, Va., U.S.A.
- VARNEY, H. R., and Mrs. VARNEY. Burlington, Vt., U.S.A.
- VAUGHAN, L. M. Washington, D.C., U.S.A.
- VOORHIES, M. J., and Mrs. VOORHIES. University, La., U.S.A.
- WAGENEN, A. VAN. Ithaca, N.Y., U.S.A.
- WALDRON, M. E. Totnes, Devon, England.
- WALRATH, F. J. Knoxville, Tenn., U.S.A.
- WARREN, S. W., and Mrs. WARREN. Ithaca, N.Y., U.S.A.
- DE WEES, Miss ANNE. Washington, D.C., U.S.A.
- WEHRWEIN, G. S., and Mrs. WEHRWEIN. Madison, Wisc., U.S.A.
- WHEELER, L. A. Washington, D.C., U.S.A.
- WHITE, O. H. Ithaca, N.Y., U.S.A.
- WIBBERLEY, G. P. Aberystwyth, Wales.
- WILCOX, W. W. Ames, Iowa, U.S.A.
- WILLIAMSON, P. S. Ithaca, N.Y., U.S.A.
- WILMANN, W. Leipzig, Germany.
- WILSON, C. F., and Mrs. WILSON. Ottawa, Ont., Canada.
- WILSON, M. L. Washington, D.C., U.S.A.
- WILSON, R. V. CHICAGO, Ill., U.S.A.
- WINDIRSCH, F. Czechoslovakia.
- WOLFF, G. Berlin, Germany.
- WOOD, V. A. Ottawa, Ont., Canada.
- WORKING, E. J. Urbana, Ill., U.S.A.
- WRIGHT, KARL T. Ithaca, N.Y., U.S.A.
- WILMOT, W. H. Toronto, Ont., Canada.
- YOUNG, E. C. Lafayette, Ind., U.S.A.
- YOUNG, H. N., and Mrs. YOUNG. Blacksburg, Va., U.S.A.
- YOUNGBLOOD, B., and Mrs. YOUNGBLOOD. Washington, D.C., U.S.A.

INTERNATIONAL CONFERENCE OF AGRICULTURAL ECONOMISTS CONFERENCES

- First*, 1929: Dartington Hall, Totnes, Devon, England.
Second, 1930: Cornell University, Ithaca, New York State, U.S.A.
Third, 1934: Bad Eilsen, Schaumburg-Lippe, Germany.
Fourth, 1936: St. Andrews University, Fife, Scotland.
Fifth, 1938: Macdonald College, Ste Anne de Bellevue, P.Q., Canada.
-

THE International Conference of Agricultural Economists was inaugurated during the summer of 1929, when fifty economists from eleven countries met for two weeks at Dartington Hall, Devon, England, on the invitation of Mr. L. K. Elmhirst. The Second Conference was held in 1930 at Cornell University, U.S.A., and was attended by over 300 members and visitors, twenty countries being represented. At this meeting the formal Constitution was drawn up and approved. The Third Conference, held at Bad Eilsen, Germany, in 1934, was attended by 170 members, nineteen countries being represented. The Fourth Conference was held at St. Andrews, Scotland, when 219 members and visitors attended, of whom 127 were from twenty-one countries outside of the United Kingdom. The Fifth Conference, at Macdonald College, Canada, in 1938 was attended by 510 members from twenty-three countries.

The Conference has now a total membership of 476, with thirty-four National or Area Groups. Its representative character has been steadily growing since the first informal gathering in 1929, until it now embraces the majority of countries where the study of agricultural economics is pursued.

The object of the Conference is that of fostering development of the sciences of agricultural economics and of furthering the application of the results of economic investigation of agricultural processes and agricultural organization in the improvement of economic and social conditions relating to agriculture and rural life.

Membership shall consist of individuals who pay £1, Rm. 20, or \$5, or such sum as the President may reasonably declare to be the monetary equivalent of £1, for one Conference period (which shall

be the period from the end of one Conference to the end of the next). The majority of members are professional agricultural economists engaged in research, teaching, or public administration, but the membership is representative as well of a wide range of agricultural and economic interests. Applications may be made to the Secretary, who will put the applicant in touch with the appropriate national correspondent.

Meetings are held at intervals of two or three years, at a time and place determined by the Council. No two successive meetings can be held in the same country. The meetings afford a unique opportunity of personal intercourse with fellow-workers from all parts of the world.

The Proceedings consisting of papers and discussions at each Conference are published, and one copy free of charge is sent to each member. Extra copies may be purchased by members at reduced rates. Copies of the Proceedings of the First, Second, Third, Fourth, and Fifth Conferences are available on application to the Secretary, or to Dr. C. E. Ladd, Department of Agricultural Economics, Cornell University, Ithaca, N.Y., U.S.A.

AMENDED CONSTITUTION

NAME AND OBJECT

The name of the organization shall be The International Conference of Agricultural Economists.

The object of the Conference is that of fostering development of the sciences of agricultural economics and of furthering the application of the results of economic investigation of agricultural processes and agricultural organization in the improvement of economic and social conditions relating to agriculture and rural life.

MEETINGS

Meetings shall be held at a time and place determined by the Council. No two successive meetings shall be held in any one country.

MEMBERSHIP

Membership shall consist of individuals who pay £1, Rm. 20, or \$5, or such sum as the President may reasonably declare to be the monetary equivalent of £1, for each Conference period (which shall be the period from the end of one Conference to the end of the next).

Libraries, corporations, and similar institutions may become members if a duly accredited representative is appointed by each such institution.

The Conference on the recommendation of the Council may elect honorary life members.

NATIONAL OR AREA GROUPS

The members of the Conference in each country (or in a group of countries) may form a National (or Area) Group. Each such Group shall make provision for the election of a Chairman of the Group, and may provide for the appointment of a secretary of the Group, for each Conference period. The Chairman or secretary, as may be designated by the Group, shall be the correspondent of the Group.

EXECUTIVE OFFICERS

The Executive Officers shall be a President and a Secretary-Treasurer, both of whom shall be elected by the Council at a formally constituted meeting held during a Conference, and shall hold office for a period ending with the close of the next succeeding Conference. The Executive Committee, in the event of the inability of the President to fulfil his duties, shall elect an acting-President who shall hold office until the first session of the next Conference, at which time the Council shall elect a President of the Conference to hold office for the period of the meeting of that Conference.

HONORARY OFFICERS

The Conference on recommendation of the Council may elect Honorary Vice-Presidents for life.

COUNCIL

The Council shall consist of the Executive Officers as ex-officio members together with members of each National or Area Group as hereinafter provided.

(a) A National or Area Group having 5 or more members may elect one member of Council; having 10 and not exceeding 25 members, two members of Council; having over 25 and not exceeding 60 members, three members of Council; having over 60 members, four members of Council; the maximum number of members of Council for any electing Group shall be four.

(b) Members of the Council shall be elected and hold office for a Conference period.

(c) Method of election of Members of the Council shall be left to the discretion of each electing Group.

EXECUTIVE COMMITTEE

The Executive Committee shall consist of the two Executive Officers and the duly elected Chairmen of all National or Area Groups having five or more members.

The President of the Conference shall be the Chairman of the Executive Committee.

The Secretary of the Conference shall be the Secretary of the Executive Committee.

The acts of the Executive Committee shall be subject to the approval of the Council.

It shall be the duty of the Executive Committee to act for the Council between meetings of the Council.

*PROVISION FOR TEMPORARY ORGANIZATION
OF GROUPS*

Where no Group has been constituted the President may appoint a representative to canvass for members in the country or area and to make arrangements for the proper organization of a Group under the Constitution.

AMENDMENT OF CONSTITUTION

The Constitution may be amended by a majority vote at any Conference provided the amendment has previously received the approval of a majority of the Council.

LIST OF OFFICERS AND MEMBERS

(For 1936-8)

OFFICERS

President

ELMHIRST, L. K., Dartington Hall, Totnes, Devon, England.

Vice-Presidents

WARREN, Professor G. F., Department of Agricultural Economics and Farm Management, Cornell University, Ithaca, N.Y., U.S.A.

SERING, Geheimrat Professor Dr. M., Berlin-Dahlem, Luciusstrasse 9, Germany.

Secretary and Treasurer (Honorary)

CURRIE, J. R., Research Department (Economics), Dartington Hall, Totnes, Devon, England.

MEMBERS

AFRICA

UNION OF SOUTH AFRICA

Joint Correspondents:

LEPPAN, Professor H. D., Department of Agricultural Economics, University of Pretoria, Pretoria.

VAN DER POST, A. P., Division of Economics and Markets, Union Department of Agriculture, Pretoria.

BEYLEVELD, Dr. A. J., Division of Economics and Markets, Union Department of Agriculture, Pretoria.

GELDENHUYS, F. E., South African Legation, Piazza dell' Indipendenza 3, Rome, Italy.

STOKER, Professor J. F. W., Division of Economics and Markets, Union Department of Agriculture, Pretoria.

STOKER, Dr. H. M., Legation of the Union of South Africa, Berlin W. 35, Tiergartenstrasse 17a, Germany.

AMERICA

CANADA

Council:

ALLEN, Dr. W., Office of the Agricultural Commissioner, Canada House, Trafalgar Square, London, S.W. 1, England.

BOOTH, Dr. J. F., Economics Division, Marketing Service, Dominion Department of Agriculture, Ottawa, Ont.

LATTIMER, Professor J. E., Farm Economics Department, Macdonald College, Ste Anne de Bellevue, P.Q.

Correspondent:

BOOTH, Dr. J. F. (See above.)

AGRICULTURE, DOMINION DEPARTMENT OF, Main Library, Confederation Block, Ottawa, Ont. (Representative: A. L. SHAW.)

ARMSTRONG, P. C., Canadian Pacific Railway Company, Montreal, P.Q.

- BAIRD, W. W., Experimental Farm, Nappan, N.S.
BOIS, H. C., Rural Economics Branch, Department of Agriculture, Province of Quebec.
BOUCHARD, G., M.P., Ste Anne de la Pocatière, P.Q.
BOUCHER, G. P., Economics Division, Marketing Service, Dominion Department of Agriculture, Ottawa, Ont.
BRITISH COLUMBIA, THE UNIVERSITY OF (The Library), Vancouver, B.C.
CAIRNS, A., Wheat Advisory Committee, Bush House, London, W.C. 2, England.
CAMPBELL, B. A., Economics Division, Marketing Service, Dominion Department of Agriculture, Ottawa, Ont.
CANADIAN GOVERNMENT TRADE COMMISSIONER, 200 St. Vincent Street, Glasgow, C. 2, Scotland.
CANADIAN INDUSTRIES LIMITED (Fertilizer Division), P.O. Box 1260, Montreal, P.Q. (Representative: B. L. EMSLIE.)
CLEMENT, Dean F. M., Faculty of Agriculture, University of British Columbia, Vancouver, B.C.
COKE, J., Economics Division, Marketing Service, Dominion Department of Agriculture, Ottawa, Ont.
DILLON, R., The Royal Trust Company, Montreal, P.Q.
GAGNÉ, Professor C., Superior School of Agriculture, Ste Anne de la Pocatière, P.Q.
GRINDLEY, Dr. T. W., Agricultural Branch, Dominion Bureau of Statistics, Department of Trade and Commerce, Ottawa, Ont.
HARE, H. R., Economics Division, Marketing Service, Dominion Department of Agriculture, Ottawa, Ont.
HAYTHORNE, G. V., 108 Oxford Street, Cambridge, Mass., U.S.A.
HOPPER, Dr. W. C., Economics Division, Marketing Service, Dominion Department of Agriculture, Ottawa, Ont.
HORNING, T. J., c/o The Royal Bank of Canada, Montreal, P.Q.
HUDSON, S. C., Economics Division, Marketing Service, Dominion Department of Agriculture, Ottawa, Ont.
INNIS, Professor H. A., Department of Political Science, University of Toronto, Toronto, Ont.
LAROSE, F., Plantagenet, Ont.
LAUREYS, Dean H., School of Higher Commercial Studies, University of Montreal, Montreal, P.Q.
LONGLEY, Dr. W. V., College of Agriculture, Truro, N.S.
MACGIBBON, Dr. D. A., Board of Grain Commissioners, Winnipeg, Man.
MAJOR, T. G., Commercial Intelligence Service, Department of Trade and Commerce, Ottawa, Ont.
NATIONAL DAIRY COUNCIL OF CANADA, Ottawa, Ont. (Representative: A. C. FRASER.)
NATIONAL RESEARCH COUNCIL, THE, Ottawa, Ont. (Representative: Dr. R. NEWTON.)
PARKER, C. V., Economics Division, Marketing Service, Dominion Department of Agriculture, Ottawa, Ont.
PROSKIE, J., Economics Division, Marketing Service, Dominion Department of Agriculture, Ottawa, Ont.
RICHARDS, A. E., Economics Division, Marketing Service, Dominion Department of Agriculture, Ottawa, Ont.
RILEY, Professor C. W., Department of Agricultural Economics, Ontario Agricultural College, Guelph, Ont.
ROSENBERG, L., Regina, Sask.
RUTHERFORD, J. B., Agricultural Branch, Dominion Bureau of Statistics, Department of Trade and Commerce, Ottawa, Ont.
SHERMAN, Dr. CAROLINE B., Bureau of Agricultural Economics, United States Department of Agriculture, Washington, D.C., U.S.A.
STEWART, Professor A., Department of Political Economy, University of Alberta, Edmonton, Alta.
STRANGE, Major H. G. L., Searle Grain Company Limited, Winnipeg, Man.

List of Officers and Members

TODD, S. E., The Industrial and Development Council of Canadian Meat Packers, 200 Bay Street, Toronto, Ont.

WILSON, C. F., Agricultural Branch, Dominion Bureau of Statistics, Department of Trade and Commerce, Ottawa, Ont.

IBERO-AMERICA

Correspondent:

CHIAPA, Dr. L. N., Carrera 10/18-82, Bogota, Colombia.

GARCIA ARIAS, Dr. R., Argentine Embassy, 11 Lowndes Square, London, S.W. 1, England.

VESTBY, R. A.

MEXICO

FABILA, G., Primera Avenida No. 14, Colonia Anzures, Mexico, D.F.

UNITED STATES OF AMERICA

Council:

CASE, Professor H. C. M., Department of Agricultural Economics, College of Agriculture, University of Illinois, Urbana, Ill.

HOBSON, Professor A., University of Wisconsin, Madison, Wis.

LADD, Dean C. E., New York State Colleges of Agriculture and Home Economics, Cornell University, Ithaca, N.Y.

Correspondent:

LADD, Dean C. E. (See above.)

ALLBAUGH, L. G., State College, Ames, Iowa.

ANDERSON, D. S., Department of Agricultural Economics, University of Wisconsin, Madison, Wis.

ARNOLD, C. R., Production Credit Commission, Farm Credit Administration, Washington, D.C.

ASHBY, R. C., Department of Agricultural Economics, College of Agriculture, University of Illinois, Urbana, Ill.

BAKER, Dr. O. E., Bureau of Agricultural Economics, United States Department of Agriculture, Washington, D.C.

BENNETT, M. K., Food Research Institute, Stanford University, California.

BERG, H. A., University of Michigan, East Lansing, Mich.

BLACK, Professor J. D., Department of Economics, Harvard University, Cambridge, Mass.

BOALS, G. P., Office of the Agricultural Attaché, American Embassy, Berlin W. 9, Bellevue Strasse 8, Germany.

BOND, Professor M. C., Department of Agricultural Economics and Farm Management, Cornell University, Ithaca, N.Y.

BOSS, Dr. A., 1443 Raymond Avenue, St. Paul, Minn.

BOYLE, H. L., International Harvester Company, 180 North Michigan Avenue, Chicago, Ill.

BRANDT, Dr. K., Food Research Institute, Stanford University, California.

BRONSON, W. H., New England Milk Producers' Association, 51 Cornhill, Boston, Mass.

BRUMLEY, F. W., Louisiana State University, La.

BURDICK, Dr. R. T., Department of Economics and Sociology, Colorado State College, Fort Collins, Colo.

CINCINNATI, UNIVERSITY OF (The General Library), Cincinnati, Ohio. (Representative: E. A. HENRY.)

CLARKE, Professor G. B., Connecticut State College, Storrs, Conn.

- CLEVELAND PUBLIC LIBRARY, 325 Superior Avenue, N.E., Cleveland, Ohio. (Representative: The Librarian).
- CONNECTICUT STATE COLLEGE (Agricultural Economics Department), Storrs, Conn.
- CUNNINGHAM, Dr. L. C., Department of Agricultural Economics and Farm Management, Cornell University, Ithaca, N.Y.
- CURTISS, W. M., Department of Agricultural Economics and Farm Management, Cornell University, Ithaca, N.Y.
- DAUGHERTY, M. M., Agricultural Experiment Station, University of Delaware, Newark, Del.
- DEERING, Dean A. L., College of Agriculture, University of Maine, Orono, Me.
- DIXON, H. M., Agricultural Economics Extension, Extension Service, United States Department of Agriculture, Washington, D.C.
- EFFERSON, J. N., Department of Agricultural Economics and Farm Management, Cornell University, Ithaca, N.Y.
- GÉAUQUE, E. P., 712 Lake Street, San Francisco, Cal.
- GRIMES, Professor W. E., Kansas State Agricultural College, Manhattan, Kan.
- HART, Dr. V. B., Department of Agricultural Economics and Farm Management, Cornell University, Ithaca, N.Y.
- HEDLUND, G. W., Department of Agricultural Economics and Farm Management, Cornell University, Ithaca, N.Y.
- HUBBARD, Professor B. H., Department of Agricultural Economics, College of Agriculture, University of Wisconsin, Madison, Wis.
- HILL, Dr. E. B., Michigan State College, University of Michigan, East Lansing, Mich.
- HILL, Dr. F. F., Farm Credit Administration, Washington, D.C.
- HOBSON, L. G., Fourth District, Farm Credit Administration, Louisville, Ky.
- HOOD, K., Division of Agricultural Extension, School of Agriculture and Experiment Station, The Pennsylvania State College, State College, Pa.
- HOOD, R., National Co-operative Council, 1731 Eye Street, N.W., Washington, D.C.
- HURD, Dr. T. N., Department of Agricultural Economics and Farm Management, Cornell University, Ithaca, N.Y.
- JESNESS, Dr. O. B., Division of Agricultural Economics, University of Minnesota, St. Paul, Minn.
- JOHNSON, E. C., Farm Credit Administration, Washington, D.C.
- KENESTRICK, H. G., Agricultural Education Department, Ohio State University, Columbus, Ohio.
- KINDT, L. E., Agricultural Adjustment Administration, United States Department of Agriculture, Washington, D.C.
- KRAUSS, F. G., University of Hawaii, Honolulu, Hawaii.
- LEWIS, A. B., Department of Agricultural Economics and Farm Management, Cornell University, Ithaca, N.Y.
- MALLORY, L. de W., Embassy of the United States of America, Paris, France.
- MARQUIS, J. CLYDE, International Institute of Agriculture, Rome, Italy.
- MCBRIDE, C. G., Department of Rural Economics, College of Agriculture, Ohio State University, Columbus, Ohio.
- MENDUM, S. W., 214 Holly Avenue, Takoma Park, Washington, D.C.
- MERCHANT, Dr. C. H., Department of Agricultural Economics, Maine Agricultural Experiment Station, Orono, Me.
- MISNER, Dr. E. G., Department of Agricultural Economics and Farm Management, Cornell University, Ithaca, N.Y.
- MORGAN, Professor O. S., Schermerhorn Hall, School of Business, Columbia University, New York City, N.Y.
- MORTENSON, W. P., Department of Agricultural Economics, College of Agriculture, University of Wisconsin, Madison, Wis.
- MYERS, Professor W. I., Department of Agricultural Economics and Farm Management, Cornell University, Ithaca, N.Y.

List of Officers and Members

- NEBRASKA, THE UNIVERSITY OF (Office of the Librarian), Lincoln, Nebr. (Representative: MAUDE E. WISHERD.)
- NOBLE, C. V., University of Florida, Gainesville, Fla.
- NORTH-WESTERN UNIVERSITY, THE (The Library), 619 Clark Street, Evanston, Ill.
- POND, PROFESSOR G. A., Division of Agricultural Economics, University of Minnesota, St. Paul, Minn.
- POWELL, W., Department of Agricultural Economics and Farm Management, Cornell University, Ithaca, N.Y.
- PUERTO RICO, THE UNIVERSITY OF (Division of Agricultural Economics), College of Agriculture and Mechanic Arts, Rio Piedras, P.R., West Indies. (Representative: Dr. S. L. DESCARTES.)
- RASMUSSEN, M. P., Department of Agricultural Economics and Farm Management, Cornell University, Ithaca, N.Y.
- RAUCHENSTEIN, E., Bureau of Agricultural Economics, United States Department of Agriculture, Washington, D.C.
- RICHARDS, P., Bureau of Agricultural Economics, United States Department of Agriculture, Washington, D.C.
- RONK, S. E., Springfield Bank for Co-operatives, Springfield, Mass.
- ROSS, DR. H. A., c/o The Borden Company, 350 Madison Avenue, New York City, N.Y.
- SANDERS, J. T., Oklahoma A. and M. College, Stillwater, Okla.
- SAVILLE, PROFESSOR R. J., Louisiana State University, Baton Rouge, La.
- SCHULTZ, T. W., Department of Economics and Sociology, Iowa State College, Ames, Iowa.
- SPENCER, PROFESSOR L., Department of Agricultural Economics and Farm Management, Cornell University, Ithaca, N.Y.
- STEWART, C. L., Land Economics Department, University of Illinois, Urbana, Ill.
- STINE, DR. O. C., Division of Statistical and Historical Research, Bureau of Agricultural Economics, United States Department of Agriculture, Washington, D.C.
- TAYLOR, DR. H. C., Farm Foundation, 606 South Michigan Avenue, Chicago, Ill.
- TENNANT, PROFESSOR J. L., Rhode Island State College, Kingston, R.I.
- THOMSON, E. H., The Federal Land Bank of Springfield, Springfield, Mass.
- TOLLEY, H. R., Agricultural Adjustment Administration, Washington, D.C.
- ULREY, O., Department of Economics, Michigan State College, East Lansing, Mich.
- UNITED STATES DEPARTMENT OF AGRICULTURE, THE (Bureau of Agricultural Economics), Washington, D.C. (Representative: Miss M. G. LACY.)
- UTAH STATE AGRICULTURAL COLLEGE, Agricultural Experiment Station, Logan, Utah.
- WARREN, PROFESSOR G. F., Department of Agricultural Economics and Farm Management, Cornell University, Ithaca, N.Y. (*First Vice-President of the Conference.*)
- WARREN, DR. S. W., Department of Agricultural Economics and Farm Management, Cornell University, Ithaca, N.Y.
- WASHINGTON, THE STATE COLLEGE OF (Library), Pullman, Wash. (Representative: W. W. FOOTE.)
- WEAVER, PROFESSOR F. P., Department of Agricultural Economics, The Pennsylvania State College, Pa.
- WEHRWEIN, DR. G. S., Department of Agricultural Economics, University of Wisconsin, Madison, Wis.
- WHELPTON, P. K., Scripps Foundation for Research in Population Problems, Miami University, Oxford, Ohio.
- WICKENS, D. L., Division of Agricultural Finance, Bureau of Agricultural Economics, United States Department of Agriculture, Washington, D.C.
- WILLIAMSON, P. S., Department of Agricultural Economics and Farm Management, Cornell University, Ithaca, N.Y.
- WILSON, M. L., United States Department of Agriculture, Washington, D.C.
- YOUNG, DR. E. C., Purdue University, Lafayette, Ind.

ASIA

CHINA

Correspondent:

- CHANG, C. C., University of Nanking, Nanking.
BUCK, J. L., University of Nanking, Nanking.
CHIAO, C. M., Department of Agricultural Economics, University of Nanking, Nanking.
HSU, P. C., University of Nanking, Nanking.
KING, O., Department of Agricultural Economics, College of Agriculture and Forestry,
University of Nanking, Nanking.
LIANG, C. C., National Research Institute of Social Sciences, Academia Sinica, Nanking.
SWEN, W. Y., Department of Agricultural Economics, University of Nanking, Nanking.
 TSAI, T. Y., 1026 College Court, Madison, Wis., U.S.A.
YAO, H. S., Mass Education Movement, Tingshien, Hophi.

INDIA

Correspondent:

- GULERI, Professor J., Punjab Agricultural College and Research Institute, Lyallpur,
Punjab.
BANS, Dr. R. S., c/o Bank of Montreal, 9 Waterloo Place, Pall Mall, London, S.W. 1,
England.
BARVE, S. S., 525 Narayan, Poona 2, Bombay Presidency.
GHATGE, Professor M. B., Agricultural College, Poona, Bombay Presidency.
MUKERJEE, B., Woodlands, Badshabag, Lucknow, U.P.
PANJABI, K. L., c/o Lloyds Bank Ltd., 6 Pall Mall, London, S.W. 1, England.
SHIRNAME, Dr. T. G., Central Marketing Staff, Government of India, Old Delhi.

JAPAN

Correspondent:

- NASU, S., Department of Agriculture, Tokio Imperial University, Tokio.
KOBAYAKAWA, Professor K., Chosen Nokwai (Central Agricultural Association of
Chosen), Keijyo.
OKUDA, I., Institute of Agricultural Economics, Taihoku Imperial University Library,
Formosa.

PALESTINE

Correspondent:

- ELAZARI-VOLGANI, Professor I., Agricultural Experiment Station, Institute of Agri-
culture and Natural History, Rehoboth.
BRUTZKUS, Professor B., Jerusalem-Bechavia B, Alfassi Road 33.

AUSTRALASIA

AUSTRALIA

- CARVER, S. R. (Bureau of Statistics and Economics, Government of N.S.W.), P.O.
Box 22A, Sydney, N.S.W.
LOWNDES, A. G., Bank of New South Wales, Box 22A, G.P.O., Perth, W.A.
UNDER-SECRETARY, THE, Premier's Department, Sydney, N.S.W.

NEW ZEALAND

Correspondent:

- RIDDET, Professor W., Dairy Research Institute, Massey Agricultural College, Palmer-
ston North.
COCKAYNE, A. H., Department of Agriculture, Wellington.

EUROPE

BELGIUM

BAPTIST, Dr. G., Station d'Économie rurale de l'État, Rue Saint-Amand, 80, Gand.

BULGARIA

Council:

MOLLOFF, Professor Y. S., College of Agriculture, University of Sofia, Sofia.

Correspondent:

ANDERSON, Professor O. N., Statistical Institute for Economic Research, State University, Sofia IV, Shipka 6.

BULGARIAN ECONOMIC SOCIETY, Sofia, Levski 4.

DELEFF, N. S., College of Agriculture, University of Sofia, Sofia.

DOLINSKY, Professor N. V., Handelshochschule, Varna.

EGOROFF, P. (Statistical Institute for Economic Research, State University of Sofia, Sofia IV, Shipka 6), P.O. Box No. 366, Sofia.

KALAPCHIEFF, G. D., Department of Agricultural Economics, Faculty of Agriculture, University of Sofia, Sofia.

KOSTNER, Professor N., Banque Nationale de Bulgaria, Sofia.

MYSHAIKOV, Professor D., Sofia, Belcheff 34.

STATISTICAL INSTITUTE FOR ECONOMIC RESEARCH, STATE UNIVERSITY OF SOFIA, Sofia IV, Shipka 6.

TOTEFF, A. U., Sofia, St. Karadjia 18a.

UNION DES BANQUES POPULAIRES, Sofia.

VITANOFF, M. P., Department of Agricultural Economics, Faculty of Agriculture and Forestry, University of Sofia, Sofia.

WHIPPLE, C. E., Near East Foundation, Institute of Agricultural Economics, Faculty of Agriculture, University of Sofia, Sofia.

CZECHOSLOVAKIA

Correspondent:

BRDLIK, Dr. V. (Institute of Agricultural Accountancy and Economics of the Czechoslovak Republic), Praha XIX, Dejvice 1540.

BUČEK, Dr. F. (Institute of Agricultural Accountancy and Economics of the Czechoslovak Republic), Praha XIX, Dejvice, U. Nové Techniky 25.

ČESKOSLOVENSKA AKADEMIE ZEMĚDĚLSKA (Czechoslovak Academy of Agriculture), Praha XII, Slezska Ul. c. 7. (Representative: Dr. E. REICH.)

DOKLÁDAL, Professor Dr. J., Benešova Technika, Brno, Vevří 95.

HORAK, Dr. O. (Ministry of Agriculture), Praha XVII, 395.

KNESPL, Ing. J. (Institute of Agricultural Accountancy and Economics of the Czechoslovak Republic), Praha XVIII, Strešovice 320.

PATKA, Ing. E. (Institute of Agricultural Accountancy and Economics of the Czechoslovak Republic), Praha, Dejvice, Sadova 16.

WINDIRSCH, Dr. F., Reichenberg, Goethestrasse 5.

WORLICZEK, Professor Dr. C., Technical High School, Brno.

DENMARK

Council:

LARSEN, Professor O. H., Det landøkonomiske Driftsbureau, Gl. Kongevej 127¹, København V.

Correspondent:

LARSEN, Professor O. H. (See above.)

- ASMUSSEN, J., 22 Kristiansgade, København K.
JACOBSEN, A. P., Agricultural Commissioner to the Danish Government, Berlin, N.W. 40, Alsenstrasse 4, Germany.
KRISTENSEN, K. K., Foreningen af jydsk Landboforeninger, Ryesgade 9, Aarhus.
SKOVGAARD, Dr. K. K., Statens Planteavlskontor, Bolighedsvej 26, København V.
SØRENSEN, S., Agricultural Adviser to the Danish Government, 29 Pont Street, London, S.W. 1, England.

EIRE

Correspondent:

O'DONOVAN, J., 10 Airfield Road, Rathgar, Dublin.

FINLAND

Correspondent:

- LEHTINEN, A., Maneesinkatu 2, Helsinki. (Representing the Economic Defence Council.)
CENTRAL UNION OF AGRICULTURAL SOCIETIES, THE, Helsinki. (Representative: N. PUOLAKKA.)
FARM MANAGEMENT, THE INSTITUTE OF, Helsinki University, Helsinki. (Representative: Dr. R. PIHKALA.)
FARMERS' CENTRAL UNION, THE, Helsinki. (Representative: E. KORPELA.)
FOREST SCIENCE SOCIETY, THE. (Representative: Dr. E. SAARI, Ylioposts, Helsinki.)
HELSINKI, THE UNIVERSITY OF, Helsinki. (Representative: Dr. K. T. JUTILA.)
NATIONAL ECONOMICS SOCIETY, THE, Runebergerstreet 29, Helsinki. (Representative: Dr. K. HAATAJA.)
PELLERVO SOCIETY, THE (The Marketing Research Institute), Helsinki. (Representative: Dr. O. W. WILLANDT.)

FRANCE

Joint Correspondents:

- AUGÉ-LARIBÉ, Professor M., 138 Avenue de Wagram, Paris.
ROUILLY, A., Société agricole de comptabilité et de révision, 8 Rue d'Athènes, Paris 9e.
CAISSE NATIONALE DE CRÉDIT AGRICOLE, 5 Rue Casimir Perier, Paris. (Representative: L. TURDY.)

GERMANY

Council:

- VON DIETZE, Professor Dr. C., Freiburg i.B., Maria Theresiastrasse 13.
MEYER, Professor Dr. K., Berlin, W. 35, Bendlerstrasse 37. (Representative of Stabsamt des Reichsbauernführers.)
SEEDORF, Professor Dr. W. (Institut für landwirtschaftliche Betriebs- und Landarbeitslehre an der Georg-August-Universität), Göttingen, Nikolausberger Weg 11.

ZÖRNER, Professor Dr. H., Berlin-Lichterfelde-Ost, Schillerstrasse 12a.

Correspondent:

- WOLFF, Dr., Berlin, W. 35, Bendlerstrasse 37.
VON ARNIM, Graf N., Standesherrschaft Muskau, Muskau.
VON ARNIM, Graf A., Standesherrschaft Muskau, Muskau.
ASMIS, Dr., Berlin-Grunewald, Margaretenstrasse 5.
BERNDT, Professor Dr., Leipzig O. 5, Johannisalle 21.
BICKEL, I., Staatliche Lehr- und Forschungsanstalt für Gartenbau, Weihenstephan, Post Freising.

- BIOLOGISCHE REICHSANSTALT FÜR LAND- UND FORSTWIRTSCHAFT. (Representative: Dr. RIEHM, Berlin-Dahlem, Königin-Luise-Strasse 19.)
 VON BRISMARCK, Graf, Varzin, Krs. Schlawe, Pommern.
 VON BRÜHL, Graf, zu Pforfen (Niederlausitz).
 CARSTENS, Professor Dr., Landwirtschaftliche Hochschule Hohenheim, Hohenheim bei Stuttgart.
 VON DER DECKEN, Dr. H., Berlin-Frohnau, Lodystrasse 33.
 DEUTSCHES STICKSTOFF-SYNDIKAT G.m.b.H. (Representative: Dr. F. AHLGRIMM, I.G. Farbenindustrie, Berlin, N.W. 7, Neustädtische Kirchstrasse 9/10.)
 DRESCHER, Dr. L., Berlin-Lichterfelde, Geibelstrasse 3.
 EGGERT, E., Berlin-Schöneberg 1, Belzigerstrasse 72.
 VON FINCKENSTEIN, Graf Dr. H. W. FINCK, St. Vincent, Gilly/Waad, Switzerland.
 FOEDISCH, Professor Dr. F., Landmaschinen-Institut, Königsberg i.Pr., Tragheimer Kirchenstrasse 74.
 FREYTAG, Dr. K., Breitnau im Schwarzwald, Post Hintergarten.
 FROWEIN, A., Wuppertal-Elberfeld, Mellendahlerstrasse 70.
 VON GARNIER, E., Berlin-Charlottenburg 5, Am Luisenplatz.
 GARTNER, Professor Dr., Anstalt für Tierzucht der Thüringischen Landesuniversität, Jena, Hindenburgstrasse 3.
 GOERDELER, Dr. K., Oberbürgermeister a.D., Leipzig, W. 35, Kapitän-Haunstrasse 25.
 HANAU, Dr. A., Berlin-Zehlendorf, Ithweg 8.
 HANNOVERSCHE LANDESKREDITANSTALT, Hannover, Am Schiffgraben 2. (Representative: Dr. DRECHSLER.)
 HILGENSTOCK, Dr., Hannoversche Landeskreditanstalt, Hannover, Am Schiffgraben 2.
 INSTITUT FÜR KONJUNKTURFORSCHUNG, Berlin-Charlottenburg, Fasanenstrasse 6. (Representative: Geheimrat Professor Dr. WAGEMANN.)
 INSTITUT FÜR MÜLLEREI, Berlin, N. 65, Seestrasse 13. (Representative: Professor Dr. K. MOHS.)
 INSTITUT FÜR PFLANZENBAU UND PFLANZENZÜCHTUNG, Landwirtschaftliches Institut der Universität Leipzig. (Representative: Professor Dr. KNOLL, Leipzig, O. 5, Johannisallee 21.)
 INSTITUT FÜR TIERZUCHT UND MILCHWIRTSCHAFT DER UNIVERSITÄT Breslau, Breslau, Hansastrasse 25. (Representative: Professor Dr. ZORN.)
 INSTITUT FÜR TIERZÜCHTUNG UND HAUSTIERGENETIK DER FRIEDRICH-WILHELMS-UNIVERSITÄT BERLIN. (Representative: Dr. J. SCHMIDT, Berlin, N. 4, Invalidenstrasse 42.)
 INSTITUT FÜR TIERZÜCHTUNG UND ZÜCHTUNGSBIOLOGIE DER TECHNISCHEN HOCHSCHULE MÜNCHEN, München, Walther von Dyckplatz 1. (Representative: Professor Dr. HENSELER.)
 INSTITUT FÜR WELTWIRTSCHAFT UND SEEVERKEHR, Kiel, Düsternbrook 120/122. (Representative: Professor Dr. A. PREDÖHL.)
 INSTITUTSABTEILUNG FÜR WIRTSCHAFTSLEHRE DES LANDBAUS AM LANDWIRTSCHAFTLICHEN INSTITUT DER HESSISCHEN LANDESUNIVERSITÄT, Giessen, An der Hardt 3. (Representative: Professor Dr. B. PFAPP.)
 INSTITUT FÜR WIRTSCHAFTSLEHRE DES LANDBAUS AN DER ALBERTUS-UNIVERSITÄT, Königsberg i.Pr., Tragheimer Kirchenstrasse 83. (Representative: Professor Dr. E. LANG.)
 VON JANSON, G., Berlin, W. 50, Regensburgerstrasse 14a.
 JESSEN, Professor Dr. J., Berlin-Lichterfelde-West, Simonenstrasse 26.
 KALEMANN, W., Berlin-Südende, Halskestrasse 6.
 KAUTSKY, Dr. B., Kammer für Arbeiter und Angestellte in Wien, Wien 1, Ebendorferstrasse 7.
 KELLNER, Dr. E., Reichsarbeitsgemeinschaft 'Landw. Gewerbeforschung' im Forschungsdienst, Berlin, N. 4, Invalidenstrasse 42.
 KEMMER, Professor Dr. E., Institut für Obstbau, Berlin-Dahlem, Königin-Luise-Strasse 22.

- KIRSCH, Professor Dr. W., Tierzucht-Institut der Albertus-Universität, Königsberg i.Pr., Tragheimer Kirchenstrasse 83.
- KISKER, Dr. IDA, Halle, Westfalen.
- KRALLINGER, Professor Dr. H. F., Diplolandwirt, Breslau 16, Maxstrasse 8.
- KRAUSE, Dr. H., Berlin-Grünwald, Hohenzollerndamm 91.
- KREUTZ, Dr. H., Institut für Acker- und Pflanzenbau der Technischen Hochschule, München, Walther von Dyckplatz 1.
- KURON, Professor Dr. H., Institut für Bodenkunde, Berlin, N. 4, Invalidenstrasse 42.
- LANG, Professor Dr. E., Königsberg i.Pr., Mozartstrasse 12.
- LÜBKES, Dr. F., Deutsche Rentenbankkreditanstalt, Berlin, W. 8, Wilhelmstrasse 67.
- LUDOWICI, Dr. J. W., Siedlungsbeauftragter der N.S.D.A.P., München, Leopoldstrasse 17.
- MACKENROTH, Professor Dr. G., Institut für Weltwirtschaft, Kiel, Forstweg 45.
- VON DER MARWITZ, B., Friedersdorf, Post Seelow (Mark).
- MEHRENS, Dr. B., Berlin-Wannsee, Dreilindenstrasse 24/26.
- MENDELSON, Dr. F., Kammerdirektor i.R., Berlin-Dahlem, Miquelstrasse 40.
- MISERA, Dr. J. K., Berlin, N.W. 87, Siegmundshof 1.
- MITSCHERLICH, Professor Dr. A., Pflanzenbau-Institut der Universität, Königsberg i.Pr., Tragheimer Kirchenstrasse 74.
- MÜNZINGER, Professor Dr. A., Landwirtschaftliche Hochschule, Hohenheim bei Stuttgart.
- NEHRING, Dr. K., Landwirtschaftliche Versuchsstation, Rostock i.Meckl., Graf Lipperstrasse 1.
- NEUDE, Dr. H. F., jur. Ministerialrat, Kornitz über Gabersdorf, Bez. Breslau.
- NIEHAUS, Dr. H., Rostock, Schliemannstrasse 40.
- NIKLAS, Professor Dr. H., München 23, Kaiserstrasse 17.
- PELSHENKE, Professor, Institut für Backerei an der Versuchsanstalt für Getreideverarbeitung, Berlin, N. 65, Seestrasse 11.
- PFEIDERER, Dr. O., Volkswirtschaftliche Abteilung, Reichs-Kredit-Gesellschaft, Berlin, W. 8.
- PR. VERSUCHS- UND FORSCHUNGSANSTALT FÜR TIERZUCHT, Kraftborn, Kreis Breslau. (Representative: Professor TIEMANN.)
- VON QUAST, —, Rittmeister a.D., Vichel über Neustadt (Dosse).
- REICHSKURATORIUM FÜR TECHNIK IN DER LANDWIRTSCHAFT, Berlin, W. 9, Hermann-Göring-Strasse 2-3. (Representative: Dr. T. TROSCHER).
- REINHARDT, K., Rittergut Burgwerben bei Weissenfels a.S.
- RICHTER, Professor, Institut für Fütterungstechnik der Preussischen Versuchs- und Forschungsanstalt für Tierzucht, Kraftborn, Kreis Breslau.
- ROEMER, Professor Dr. T., Institut für Pflanzenbau und Pflanzenzüchtung der Universität Halle a.d. Saale, Ludwig-Wuchererstrasse 2.
- ROLFES, Dr. M., Berlin, N. 4, Invalidenstrasse 42.
- SACHSEN-ALTENBURG, G. M., Erbprinz, Schloss Hamborn über Paderborn.
- SCHARRER, Professor K., Agrikulturchemisches Institut der Ludwigs-Universität, Giessen, Braugasse 7a.
- VON SCHICKFUS, R., Regierungsrat i.R., Breslau, Güntherstrasse 6.
- SCHILLER, Dr. O., Berlin-Charlottenburg, Waitzstrasse 8.
- SCHINDLER, Dr. A., Harburg-Wilhelmsburg I, Akazienallee 12.
- VON SCHORLEMER-LIESER, Freiherr, Lieser/Mosel.
- SCHURNAN, Professor Dr. A., Institut für Agrarwesen und Agrarpolitik, Göttingen, Wohlerstrasse 3.
- SCHWEIGART, Dr. H., Obmann der Reichsarbeitsgemeinschaft 'Landw. Gewerbeforschung' im Forschungsdienst, Berlin, N. 4, Invalidenstrasse 42.
- SEELMANN-EGGEBERT, Dr. E., Deutsche Rentenbankkreditanstalt, Berlin, W. 8, Wilhelmstrasse 67.
- SEELMANN-EGGEBERT, Dr. W., Berlin-Dahlem, Arnimallee 11.
- SERING, Geheimrat Professor Dr. M., Berlin-Dahlem, Luciusstrasse 9. (*Second Vice-President of the Conference.*)

- SESSOUS, Dr., Institut für Pflanzenbau und Pflanzenzüchtung der Landesuniversität, Giessen, Senckenbergstrasse 17.
 SOLMSSEN, Dr. G., Berlin, W. 8, Mauerstrasse 35.
 STOCKMANN, Dr. G., Tübingen, Zollernstrasse 23.
 TANTZEN, T. J., Ministerpräsident a.D., Heering, Post Abbehausen, Oldenburg.
 TORNAU, Professor O., Göttingen, Goldgraben 8a.
 WALTER, Frau T., Berlin-Schöneberg, Feurigstrasse 4.
 WARMBOLD, Professor Dr. H., Reichsminister a.D., Berlin-Dahlem, Schumacherplatz 8.
 WENTZEL, O. C., Oberamtmann, Teutschenthal, Bezirk Halle a.d. Saale.
 VON WIETERSHEIM, A., Neuhof, Kreis Neumarkt, Schlesien.
 WILBRANDT, Dr. H., Guren Mahallesi 33, Ankara-Kavaklidere, Turkey.
 WILMANN, Professor Dr. W., Leipzig, O. 5, Johannisallee 23.
 VON WILMOWSKY, Freiherr T., Landrat a.D., Berlin, W. 9, Bellevuestrasse 16-18a.
 WOERMANN, Professor Dr. E., Direktor des Instituts für Landwirtschaftliche Betriebslehre (Landwirtschaftliches Institut), Halle a.d. Saale, Neuwerk 10.
 WÖHLBIER, Professor, Württembergische Landesversuchs-Anstalt für landw. Chemie (Landw. Versuchsstation), Hohenheim.
 VON ZASTROW, B., Berlin, W. 35, Matthäikirchplatz 5.

GREAT BRITAIN AND NORTHERN IRELAND

Council:

- ASHBY, Professor A. W., Department of Agricultural Economics, University College of Wales, Aberystwyth, Cardiganshire.
 BRIDGES, A., Agricultural Economics Research Institute, University of Oxford, Parks Road, Oxford.
 MAXTON, J. P., 3 Magpie Lane, Oxford.

Correspondent:

- CURRIE, J. R., Research Department (Economics), Dartington Hall, Wingett, Dartington, Totnes, Devon. (*Honorary Secretary and Treasurer of the Conference.*)
 AGRICULTURE FOR SCOTLAND, DEPARTMENT OF, 29 St. Andrew Square, Edinburgh 2. (Representative: W. H. SENIOR.)
 AVONCROFT COLLEGE, Stoke Prior, near Bromsgrove, Worcestershire. (Representative: J. DUDLEY.)
 BACON DEVELOPMENT BOARD, Neville House, Page Street, London, S.W. 1. (Representative: A. N. DUCKHAM.)
 BELL, E. A., 2 Miller Road, Ayr.
 BISSET, G. B., Agricultural Economics Department, University of Reading, 7 Redlands Road, Reading, Berkshire.
 DE BLANK, J., 73 Madeley Road, Ealing, London, W. 5.
 BLIGH, S. M., Cilmery Park, Builth Wells, R.S.O., Breconshire.
 BROWN, A. H., Northwood Farm, Hayling Island, Hampshire.
 CAMPBELL, Dr. R. M., New Zealand Government Offices, 415 Strand, London, W.C. 2.
 CARSLAW, Dr. R. MCG., School of Agriculture, University of Cambridge, Cambridge.
 COHEN, Miss R. L., Agricultural Economics Research Institute, University of Oxford, Parks Road, Oxford.
 COURTHOPE, Rt. Hon. Sir GEORGE L., Bart., M.P., Whiligh, Sussex.
 DALLAS, G., Strathclyde, Croyland Road, Wellingborough, Northamptonshire.
 DARLING, J. F., C.B.E., Hollycombe, Englefield Green, Surrey.
 DAVIES, J. LL., Milk Marketing Board, Thames House, Millbank, London, S.W. 1.
 DAVEY, Dr. C. V., Department of Agriculture and Horticulture, University of Bristol, Agricultural Advisory Office, 22 Berkeley Square, Bristol 8.
 DINSDALE, D. H., Department of Agriculture, University of Durham, King's College, Newcastle-upon-Tyne 2.
 DUNCAN, Miss F., Eden Cottage, Upper Largo, Lower Largo, Fifeshire.

- DUNCAN, J. F., Redroofs, Dalmaoulter, Airdrie, Lanarkshire.
- DUNNETT, G. S., Imperial Economic Committee, 2 Queen Anne's Gate Buildings, Dartmouth Street, London, S.W. 1.
- DYKES, G. M., South African Co-operative Deciduous Fruit Exchange Ltd., 11 Garrick Street, London, W.C. 2.
- ELMHIRST, L. K., Dartington Hall, Totnes, Devon. (*President of the Conference.*)
- ENFIELD, R. R., Economics Intelligence Division, Ministry of Agriculture and Fisheries, 10 Whitehall Place, London, S.W. 1.
- FORRESTER, Professor R. B., Department of Economics, University College of Wales, Aberystwyth, Cardiganshire.
- FRECHEVILLE, G., Windmill Hill Farm, Steeple Claydon, Buckinghamshire.
- GAVIN, W., C.B.E., Imperial Chemical House, London, S.W. 1.
- GILCHRIST, J., The West of Scotland Agricultural College, 6 Blythwood Square, Glasgow, C. 2.
- GRANT, J., 3 Magpie Lane, Oxford.
- HARKNESS, D. A. E., Ministry of Agriculture, Government of Northern Ireland, Stormont, Belfast, N.I.
- HARPER ADAMS AGRICULTURAL COLLEGE, Newport, Salop. (Representative: F. S. DENNIS.)
- HARRY, E. Ll., Department of Agricultural Economics, University College of Wales, Aberystwyth, Cardiganshire.
- HAY, A. (The Rubber-Growers' Association), Sunnyside, Writtle, Chelmsford, Essex.
- HEATH, A. E., C.M.G., Agent-General for New South Wales, Wellington House, 125 Strand, London, W.C. 2.
- HORACE PLUNKETT FOUNDATION, THE, 10 Doughty Street, London, W.C. 1. (Representative: Miss M. DIGBY.)
- HOWARD, Lady (LOUISE), 14 Liskcard Gardens, Blackheath, London, S.E. 3.
- HOWELL, J. PRYSE, Department of Agricultural Economics, University College of Wales, Aberystwyth, Cardiganshire.
- HENDERSON, R., Seale-Hayne Agricultural College, Newton Abbot, Devon.
- HINCKES, Captain R. T., Mansel House, Mansel Lacy, Herefordshire.
- HUGGINS, H. D., Department of Agriculture, British Guiana.
- IMPER, Dr. A. D., The North of Scotland College of Agriculture, Crown Mansions, 41½ Union Street, Aberdeen.
- JOBSON, Miss B., Redroofs, Dalmaoulter, Airdrie, Lanarkshire.
- JONES, A., Agricultural Advisory Department, University of Manchester, 12 Lime Grove, Manchester.
- JONES, E. L., Pigs Marketing Board for Northern Ireland, 36 Victoria Square, Belfast, N.I.
- JONES, W. H., Department of Agricultural Economics, University College of Wales, Aberystwyth, Cardiganshire.
- LLOYD, E. M. H., Food (Defence Plans) Department, Board of Trade, Great Westminster House, Horseferry Road, London, S.W. 1.
- LONG, W. H., Department of Agriculture, The University, Leeds 2.
- MACGREGOR, J. J., Harper Adams Agricultural College, Newport, Shropshire.
- MIDDLETON, Sir THOMAS H., K.C.I.E., K.B.E., C.B., Development Commission, 6a Dean's Yard, Westminster, S.W. 1.
- MILLAR, Miss E. C., Agricultural Economics Research Institute, University of Oxford, Parks Road, Oxford.
- MURRAY, Dr. K. A. H., Agricultural Economics Research Institute, University of Oxford, Parks Road, Oxford.
- O'HARA, P. J., Ministry of Agriculture, Government of Northern Ireland, Stormont, Belfast, N.I.
- ORR, J., Netherham, West Linton, Peeblesshire.
- ORWIN, C. S., Agricultural Economics Research Institute, University of Oxford, Parks Road, Oxford.

List of Officers and Members

- RAEBURN, J. R., Agricultural Economics Research Institute, University of Oxford, Parks Road, Oxford.
- RANKIN, A., The Scottish Agricultural Securities Corporation Ltd., 10 York Place, Edinburgh 1.
- REES, T. G., Research Department (Economics), Dartington Hall, Wingett, Dartington, Totnes, Devon.
- ROBERTS, C. W., Midland Agricultural College, Sutton Bonington, Loughborough, Leicestershire.
- ROBERTSON SCOTT, J. W., *The Countryman*, Idbury, Kingham, Oxfordshire.
- SCOTT, U. BALIOL, The British Management Council, Room 68, Armour House, St. Martin's-le-Grand, London, E.C. 1.
- SCOTT, Captain W. M., Millbank, Omagh, County Tyrone, N.I.
- SCOTTISH AGRICULTURAL ORGANIZATION SOCIETY LTD., 28 Rutland Street, Edinburgh 1. (Representative: C. J. M. CADZOW.)
- SHANKS, J., Ministry of Agriculture, Government of Northern Ireland, Stormont, Belfast, N.I.
- SHAXSON, E. S., Elsted Manor Farms, Midhurst, Sussex.
- SHEPHERD, Professor C. Y., The Imperial College of Tropical Agriculture, St. Augustine, Trinidad, British West Indies.
- TAYLOR, S., School of Agriculture, University of Cambridge, Cambridge.
- THOMAS, E., Agricultural Economics Department, University of Reading, 7 Redlands Road, Reading, Berkshire.
- WELLER, E. P., Gonville and Caius College, Cambridge.
- WELLS, Miss O. S., The Moors, Kegworth, Derbyshire.
- WIBBERLEY, G. P., Department of Agricultural Economics, University College of Wales, Aberystwyth, Cardiganshire.
- WITNEY, D., Department of Economics, Edinburgh and East of Scotland College of Agriculture, 13 George Square, Edinburgh 8.
- WYLLIE, J., South-Eastern Agricultural College, Wye, Ashford, Kent.

GREECE

Correspondent:

- EVELPIDI, Professor C., 'Économie Rurale', Mourouzi, 7, Athens.
- BOYADJOGLOU, Professor A.
- MOUSSOUROS, B. G.
- NEVROS, Dr. K., Société Anonyme Hellénique de Produits et Engrais Chimiques, Piræus.
- PAPANDREOU, Professor S.
- SIDERIS, Professor A.

HUNGARY

Council:

- IHRIG, Professor C., Mezőgazdaságpolitikai Intézet, Budapest IV, Szerb-utca 23.
- KENÉZ, Professor B., Budapest IV, Egyetem-tér 1-3.

Correspondent:

- VARGA, Dr. S., Hungarian Institute for Economic Research, Budapest V, Alkotmány-utca 8.
- BADICS, Dr. J., Budapest I, Tárnok-utca 2.
- BALOGH, H. E. ELEMÉR, Budapest, Balogh Tihamér-utca 3.
- BERNÁTH, H. E. STEPHEN, Budapest, Szabadság-tér 9.
- BORCSOK, A., Budapest X, Szabóky-utca 38.
- FARKAS, T., Alsobagod.
- FELLNER, Professor F., Budapest XI, Bere-utca 9.
- HOYOS, Count MAX, Budapest IV, Káplóny-utca 5.

JUHOS, Professor L., High School of Agriculture, Debrecen.
DE KONKOLY-THEGE, Dr. J., Budapest II, Keleti Károly-utca 7.
KOOS, Dr. M., Budapest V, Szabadság-tér 10.
KOOS, Dr. Z., Budapest V, Bálvány-utca 7.
LAKY, Professor D., Technical University, Budapest I, Műegyetemi-rakpart 3.
LEOPOLD, Professor L., Budapest, Somlói-utca 9.
MATTYASOVSKY, Professor N., Budapest V, Klotild-utca 15.
DE NAVRATIL, Professor A., Budapest IV, Apponyi-tér 1.
NIZSALOVSKY, Professor A., Budapest, Szemlőhegyi-utca 4/b.
NÖTEL, Dr. R., Budapest, Szemére-utca 6.
PRONAY, Baron GEORG, Budapest VIII, Trefort-utca 2.
REICHENBACH, Professor B., Budapest I, Naphegy-utca 59.
SURANYI-UNGER, Professor T., The University, Szeged.
SZABÓ, Professor G., Budapest XI, Bertalan-utca 1.
TAKACS, Dr. E., Budapest V, Kossuth Lajos-tér 11.
TÁTRAY, Dr. S., Pénzügyminisztérium, Budapest.
TELEKI, Count PAUL, Budapest V, Jozsef-tér 7.
THIRRING, Dr. L., Budapest II, Keleti Károly-utca 7.

INTERNATIONAL INSTITUTES

VON BÜLOW, F. W., Agricultural Service, International Labour Office, League of Nations, Geneva, Switzerland.
PAVLOVSKY, Dr. G., International Institute of Agriculture, Rome, Villa Umberto 1, Italy.

ITALY

Council:

SERPIERI, Professor A., Istituto Nazionale di Economia Agraria, Roma.

Correspondent:

LORENZONI, Professor G., Firenze, Via Scipione dei Ricci 24.

BRIZI, Professor A., R. Istituto superiore Agrario, Laboratorio di Economia rurale, Portici (Napoli).

ISTITUTO NAZIONALE DI ECONOMIA AGRARIA, Roma, Via Regina Elena 36.

TASSINARI, Professor G., Confederazione nazionale fascista degli Agricoltori, Roma, Via Vittorio Veneto, Palazzo Margherita.

LATVIA

Correspondent:

STARCS, Professor Dr. P., Latvijas Lauksaimniecības Kamera, Viestura Piemīņas Pili, Jelgavā.

AIZSILNIEKS, Dr. A., University of Latvia, Riga.

CEICHNERS, A., Dīka iela 18, Riga.

KANBERGS, A., Dziznavu iela 91, Riga.

KREISHMANIS, Professor P., Faculty of Agriculture, University of Latvia, Riga.

MARKUS, Professor R., Švarcmuīžas iela 3a, Riga.

PUNKA, A., Jelgavā.

RADZIŅŠ, Dr. B., Jelgavā.

NETHERLANDS

Council:

MINDERHOUD, Professor Dr. G., Landbouwhoogeschool, Wageningen.

SMIT, Ir. Chr. P. G. J., Den Haag, Wilhelmina van Pruizenstraat 53.

Correspondent:

SMIT, Ir. Chr. P. G. J. (See above.)

AARTSDIOCESANE R. K. BOEREN- EN TUINDERSBOND, Arnhem, Nieuwe Kraan, 29.

BLINK, G. J., De Boerdery (Duinrell), Wassenaar.

BRAKMAN, C., Wassenaar, Groot Hoefijzerlaan 38.

VAN DEN BRIEL, A. P., De Meern, Rijksstraatweg 109, Utrecht.

CENTRAAL BUREAU VOOR DE STATISTIEK, HET, Den Haag, Ostuinlaan 2.

DIJT, Dr. M. D., Haarlem, Ipenrodestraat 8.

GENERAL DIRECTOR FOR AGRICULTURE, THE, Den Haag.

VAN HAAREN, P. J., Noordbrabantsche Christelijke Boerenbond, Tilburg.

KLEYBURG, P. L., Wassenaar, Wittenburgerweg 44.

LOUWES, Ir. S. L., Wassenaar, Wittenburgerweg 118.

MOLHUYSEN, H., Kon. Ned. Landbouw Comite, Den Haag, Z.O., Buitensingel 234c.

SCHELTEMA, Dr. A. M. P. A., c/o Central Bureau of Statistics, Batavia, C., The Netherlands Indies.

STEVENS, Ir. C. G. P., Den Haag, Floris Grypstraat 27.

NORWAY

Correspondent:

BORGEDAL, Professor Dr. P., Norges Landbrukshøiskolen I Ås.

KGL. SELSKAP FOR NORGES VEL, DET, Bøndernes Hus, Oslo. (Representative: O. HERSONG.)

POLAND

Correspondent:

SCHMIDT, Dr. S., Krakow, Al. Mickiewicza 21.

BOGUSLAW, —, c/o Dr. S. Schmidt, Krakow, Al. Mickiewicza 21.

NOWICKE, Miss E., Warsaw, U.L. Danilowskiego, No. 45.

RADA NACZELNA ORGANIZACYJ ZIEMIANSKICH, Warsaw, Kredytowa 1.

TOWARZYSTWO EKONOMICZNE, Krakow, Golebia 20.

TOWARZYSTWO EKONOMISTOW I STATYSTYKOW, Warsaw.

WYDZIAŁ EKONOMIKI DROBNYCY GOSPODARSTW W. (Representative: Dr. S. ANTONIEWSKI, Warsaw, Senatorska 29.)

ZWIĄZEK IZB I ORGANIZACYJ ROLNICZYCH, RZECZYPOSPOLITEJ POLSKIEJ (The Union of Agricultural Chambers and Agricultural Organizations of the Polish Republic), Warsaw, Kopernika Nr. 30.

PORTUGAL

Correspondent:

BASTO, Professor E. A. LIMA, Instituto Superior de Agronomia, Lisboa.

ROUMANIA

Correspondent:

CORNĂȚEANU, Professor N. D., Sectia de Economie Rurală, Institutul de Cercetări Agronomice al României (Institute of Agricultural Research), Bulevardul Mărăști Nr. 61, Bucarest II.

CIULEI, Dr. Ing. Agr. Gh. St., Sectia de Economie Rurala, Institutul de Cercetări Agronomice al României, Bulevardul Mărăști No. 61, Bucarest II.

FRUNZĂNESCU, Dr. Ing. Agr. A., Bulevardul Elisabete 18, Bucarest.

IONESCU-SISEȘTI, Professor G., Department of Agriculture, Bucarest.

LUPAN, Dr. Ing. Agr. H., Str. Petre Liciu, No. 17, Bucarest.

NICOLAU, D. M., Royal Consulate General of Roumania in Canada, Montreal, P.Q., Canada.

POPOVICI-LUPA, Professor Dr. N. O., Str. Aviator Drosu 24, Bucarest.

SWEDEN

Correspondent:

BJÖRKMAN, Professor T., Kungl. Lantbruksakademien, Mästersamuelsgatan 47, Stockholm. (Representative of the Royal Swedish Academy of Agriculture.)

GENERAL AGRICULTURAL SOCIETY OF SWEDEN, Stockholm. (Representative: A. H. STENSGÅRD.)

STATE STATISTICAL OFFICE (Agricultural Statistical Bureau), Stockholm. (Representative: Dr. E. HØJER.)

SWEDISH AGRICULTURAL COLLEGE, Institute of Agricultural Economics, Uppsala. (Representative: Professor L. NANNESON.)

WOHLIN, Dr. N., Director-General of Customs, Stockholm.

SWITZERLAND

Correspondent:

LAUR, Professor Dr. E., L'Union Suisse des Paysans, Brougg (Argovie).

BOREL, Dr., L'Union Suisse des Paysans, Brougg (Argovie).

HOWALD, Dr., L'Union Suisse des Paysans, Brougg (Argovie).

SALIN, Professor E., Basel.

UNION OF SOVIET SOCIALIST REPUBLICS

Correspondent:

GORDEEV, Professôr G. S., Agricultural Academy of Temeriaseff, 6 Khimichka, K v. 1, Moscow 8.

YUGOSLAVIA

Correspondent:

FRANGEŠ, Dr. O., Zagreb, Kipni trg. 8.