



**AgEcon** SEARCH  
RESEARCH IN AGRICULTURAL & APPLIED ECONOMICS

*The World's Largest Open Access Agricultural & Applied Economics Digital Library*

**This document is discoverable and free to researchers across the globe due to the work of AgEcon Search.**

**Help ensure our sustainability.**

Give to AgEcon Search

AgEcon Search

<http://ageconsearch.umn.edu>

[aesearch@umn.edu](mailto:aesearch@umn.edu)

*Papers downloaded from **AgEcon Search** may be used for non-commercial purposes and personal study only. No other use, including posting to another Internet site, is permitted without permission from the copyright owner (not AgEcon Search), or as allowed under the provisions of Fair Use, U.S. Copyright Act, Title 17 U.S.C.*

# COSBAE VOICES

A Newsletter of the Committee on the Opportunities & Status of Blacks in Agricultural Economics

*COSBAE is a Section of Agricultural and Applied Economics Association*

Volume 4 Issue 1

July 2012

## Message From The Chair



William A. Amponsah, Chair

### Inside this issue:

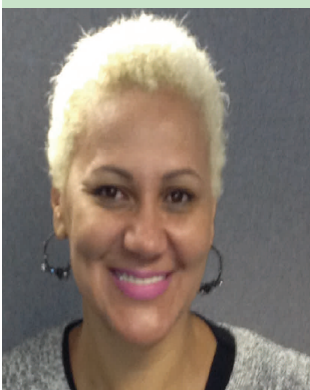
Message from the Chair |

Editor's Note |

Job Vacancies 3

Announcements 4

### Editor's Note



Blondel Brinkman, Editor

I am very excited to be a member of COSBAE and even more excited to be to have served as the secre-

*(Continued on page 2)*

What a distinct privilege and honor it has been for me to serve as the Chair of COSBAE for 2011-2012. First, I wish to express my thanks to the entire COSBAE membership for electing me to serve as your Chair. I also extend my most sincere appreciation to the current executive committee of COSBAE for co-laboring with me to make my term as Chair successful. Members of the Executive Committee have shown individual patience and willingness to cooperate on reaching consensus on just about every issue that has required their input. Certainly, it has been such a joyful and rich experience for me. I also take this opportunity to indicate the exceptional support services provided by the AAEA Business Office staff and other sister Sections in collaborating with our Section. Indeed, COSBAE is doing great!

A key goal that I set for this past year was to seek to increase our membership. Whereas older members may have retired and not as actively engaged in the profession as they used to be in the past, we must continue to encourage them to attend professional meetings and keep the integrity and historical accomplishments

William A. Amponsah

of COSBAE ongoing. There is so much to learn from them. On the other hand, there may be younger professionals and students who we must collectively engage and whose interests we must stimulate to swell our numbers. The COSBAE traditions and success stories must be passed on to them. Therefore, all of us must take responsibility in actively recruiting new members into COSBAE, encouraging them to participate in our activities, and suggesting interesting activities for COSBAE members to participate in.

This brings to mind a suggested new activity AAEA has put forward: the AAEA Symposia. This was highlighted by our Board Liaison during the annual meeting last year. Section Chairs are being encouraged by the AAEA Business Office to devote some time during their respective Section's Business meeting in Seattle to discuss the symposium activity and to encourage their members to consider submitting a proposal for consideration. For those who are not sure what the AAEA Symposia are about, you can find more information on the AAEA website (<http://www.aaea.org/meetings/protocol-for-new-aea-symposia>). Current AAEA President, Robert King, is a great advocate for the idea of AAEA sections taking the initiative to organize a symposium (see his column in the January/February issue of *Exchange* at <http://www.aaea.org/publications/the-exchange/newsletter-archives/januaryfebruary-2012>). You may also want to contact Jayson Lusk or Helen Jensen, who recently successfully organized a joint symposium with the EAAE on *Food Environment: The Effects of Context on Food Choice*. Logistical support is provided by the AAEA Business Office, while the organizing committee is responsible for ensuring the quality of the content and securing outside funding if needed to bring in plenary speakers, etc. Please come to the COSBAE Business meeting ready to discuss any potential proposal we may consider participating in. In Seattle, Washington, we have lined up several activities which would require your active participation in order for us to be successful. Of course, the primary activity is

*(Continued on page 2)*

## Message From The Chair

(Continued from page 1)

the Business meeting on the first day (Sunday, August 12, 12:00-2:00pm in Room 304 of the Washington Convention Center). You will be receiving further information about the agenda. However, if you desire to include any particular item on the agenda, please email it to my attention (at [vaampon-sah@georgiasouthern.edu](mailto:vaampon-sah@georgiasouthern.edu)). Please note that the election of next year's officers has already concluded and is no longer part of the Business meeting. We look forward to Carlisle Pemberton to assume the Chair of COSBAE with Daniel Rainey as Chair-Elect during the next academic year. During the recently concluded elections, Erika Styles was also elected as Secretary/Treasurer. Please join me in congratulating these fine folks and be ready to cooperate with them in keeping our COSBAE traditions alive. Following our Business meeting, we shall also host the COSBAE Reception (5:00-6:30pm) in the Boren Room of the Sheraton Seattle Hotel. It is the custom to invite all members and friends of COSBAE (including our students) to stop by and enjoy this period of socialization. The third activity is the track sessions.

The 2012 COSBAE Section track session information can be found in the preliminary program online at <http://www.aaea.org/2012am/preliminary-program/cosbae>. This year, we submitted and received approval of three track sessions, *Foreign Direct Investment and Agricultural Trade in Africa* (Monday, 1:00-2:30pm), *Radically Rethinking Agriculture in the Caribbean* (Monday, 4:30-6:00pm), and *Skills for Enhancing Rural/Limited Resource Enterprise Development* (Tuesday, 10:00-11:30am). The fourth activity is the COSBAE/CWAE Speaker Series Luncheon that takes place (Monday, August 13, 11:30am-1:00pm) in Room 3A of the Washington State Convention Center. This year, we continue the tradition of collaborating with our sister track session, CWAE, in holding the Luncheon. Professor William A. Masters (Tufts University) will be speaking on *Africa's Turn: How Demography, Policy and Technology are Transforming Life Prospects for African Women and Children*. We encourage all members and friends of COSBAE to include this activity when registering for the Seattle, Washington meeting. On behalf of COSBAE, I wish to extend our appreciation to Mr. Laurence Crane and the National Crop Insurance Services, Inc. of Overland Park, Kansas, our sponsors

of this year's Luncheon. Please keep in mind that as a member of COSBAE, you are also a custodian of the wonderful and proud legacy of professional accomplishments by our past members. Our challenge is to do greater exploits and pass on this exemplary legacy of success to the next generation. Recently, I was very delighted to read about the AAEA feature on one of our own, Andrew Muhammad (USDA/ERS). Even as we congratulate him, let us remind ourselves of how far we have come and challenge each other to keep the flame of professional accomplishments burning. We have so many opportunities to collaborate and strengthen our contributions to our profession through research, teaching, and extension programs nationally and internationally. There is no limit to unleashing our full potential! Again, thanks for trusting me with leadership of COSBAE for the past year. Please join me in thanking Blondel Brinkman and Gerald Nyambane for taking up the mantle to restore publication of the COSBAE Newsletter. I look forward to seeing all of you in Seattle, Washington in August.  
*William A. Amponsah*

## Editor's Note

(Continued from page 1)

tary/treasurer for the past three years. I will pass to baton to Erica Styles. Over the past years we have had several challenges but with some support from my employer, United States Department of Agriculture, Animal and Plant Health Inspection Service, we are now able to revive the newsletter and publish it once a year. Thanks to the previous editor Gerald Nyambane for providing a template and assisting me with the current publication. Gerald's predecessors also had significant input in the newsletter and we are very grateful. As our chair William A. Amponsah has so

eloquently tried to impress upon us, we have to keep the COSBAE legacy alive. One way we can do this is to keep the newsletter going. Another issue we have to consider is COSBAE's use of social media. AAEA is on Facebook and this seems to be the trend. Should we mirror AAEA and develop a Facebook page? I will be looking for your input at the business meeting in Seattle, Washington. I will be soliciting articles for the newsletter from my fellow members. We are moving to a once-per-year publication, in July just prior to the annual meetings. I am excited at the opportunity of making a contribution to the community as the newsletter editor. I bring

to the position a lot of energy and enthusiasm with the hope that the newsletter will continue to be an important forum for community members to exchange useful information. I must acknowledge my employer, the United States Department of Agriculture, Animal and Plant Health Inspection Service, Riverdale Maryland. They have allowed me to use their resources to work on COSBAE VOICES. I will also like to thank Andrew Muhammad, and Gerald Nyambane for their assistance in preparing this newsletter. Thank you!  
Dr. Blondel Brinkman

# Job Vacancies

## PURDUE UNIVERSITY

### West Lafayette, IN

Faculty Position in Climate Modeling  
(002563-2011)

**Requirements:** Purdue University in conjunction with the Purdue Climate Change Research Center (PCCRC) invites applications for a faculty appointment in the area of climate modeling. This is a full-time, tenure track assistant professor position with an appointment in the department or departments most appropriate for the successful candidate. The PCCRC serves as a focal point for interdisciplinary research on climate change and its ecological, social, economic, and political impacts, and it is a hub for cross-college collaborations at Purdue.

**Qualifications:** We seek a dynamic, broad-thinking scholar to establish an internationally recognized research group in the development of climate models and/or applications with the aim of better understanding the physical processes and feedbacks in the climate system. The successful candidate will also show promise of excellence in teaching and mentoring graduate and undergraduate students. Applicants are expected to have a Ph.D. degree in a related field by start of appointment. We are particularly interested in candidates excited to pursue interdisciplinary collaborations through the PCCRC. Established in 2004, the PCCRC is a collaborative, faculty-led center that brings together natural scientists, social scientists, and engineers in an integrative setting. Center faculty have a broad range of research interests that span spatial and temporal scales. The PCCRC is also engaged in ongoing efforts to bring climate science information to public and private decision makers, and opportunities exist for the successful candidate to participate in the center's many forms of formal and informal educational activities.

Purdue University has notable strengths and resources in computation science, simulation, and data mining through the CyberCenter and the Rosen Center for Advanced Computing. The Rosen Center for

Advanced Computing (RCAC) provides advanced computing resources and support services including access to leading-edge computational and data storage systems, as well as expertise in a broad range of high performance computing activities, to support the computationally-intensive research of Purdue faculty, staff and research partners nationwide.

**Application:** Applications are to be submitted online at <https://hiring.science.purdue.edu> and should include a cover letter, current CV (including a list of refereed publications and record of funding), 1-3 examples of research products (e.g., papers, technical reports, code), statement of research interests, statement of teaching interests including pedagogical philosophy, and the names and contact information of 3 referees. Initial review of applications will begin on January 2, 2012 but the position will remain open until a suitable pool of candidates is identified. Questions about the position should be directed to Otto C. Doering at [doering@purdue.edu](mailto:doering@purdue.edu). A background check will be required for employment in this position.

## U.S. DEPARTMENT of ENERGY

Interdisciplinary Industry Economist/Operations Research Analyst/Mathematical Statistician

OPEN PERIOD: Tuesday, July 03, 2012 to Wednesday, July 25, 2012

SERIES & GRADE: GS-0110/1515/1529-14

POSITION INFORMATION: Full-Time - Permanent

DUTY LOCATIONS: FEW vacancy(s) - Washington DC Metro Area, DC, US

WHO MAY BE CONSIDERED: OPEN TO ALL U.S. CITIZENS

The Department of Energy's (DOE's) overarching mission is to advance the national, economic, and energy security of the U.S. through scientific and technological innovation and the environmental cleanup of the national nuclear weapons complex.

With DOE you'll have the flexibility and freedom to explore a world of possibilities through a wealth of exciting and challenging career opportunities. By joining DOE, you can hone your career skills while helping to secure the U.S. future and make a real difference in the lives of Americans and people around the world. To learn more about the DOE, please visit our website the following link [DOE](#)

The office of The U. S. Energy Information Administration (EIA), is seeking a motivated and highly qualified candidate for an exciting full-time permanent position located in the Office of Integrated and International Energy Analysis, Analysis Integration Team in Washington D.C. The Office of Energy Analysis analyzes energy supply, demand, and prices including the impact of financial markets on energy markets; prepares reports on current and future energy use; analyzes the impact of energy policies; and develops advanced techniques for conducting energy information analyses. This Office also oversees the planning and execution of EIA's analysis and forecasting programs to ensure that EIA models, analyses, and projections meet the highest standards of relevance, reliability, and timeliness.

This position is established to provide a computer model developer and expert analyst to work with subject-expert analysts across the Office of Energy Analysis (OEA) to contribute to the development, maintenance, modification, and integration of computer models developed to analyze long-term international energy markets. The position requires using these models to (1) to help prepare projections of future energy market conditions and (2) to analyze the effects of alternative government policies. Job link:

<http://www.usajobs.gov/GetJob/ViewDetails/320505700>



## Announcements:

**COSBAE VOICES is sending out a call for articles for its 2013 Summer issue. The deadline for submitting articles to the editor is May 31, 2013. Please mark your calendars.**

## We're on the Web

<http://www.aaea.org/membership/sections/cosbae/>



## AAEA Contact Information

Agricultural & Applied Economics Association  
555 East Wells Street, Suite 1100  
Milwaukee, WI 53202  
Phone: (414) 918-3190  
Fax: (414) 276-3349  
Email: [info@aaea.org](mailto:info@aaea.org)

AAEA Staff  
**Kristin (Agard) Ouweneel**  
*Executive Director*  
[Kristin@aaea.org](mailto:Kristin@aaea.org)

**Adam DeMarie**  
*Program Manager*  
[Adam@aaea.org](mailto:Adam@aaea.org)

**Tess Heiderscheit**  
*Administrative Coordinator*  
[Theiderscheit@aaea.org](mailto:Theiderscheit@aaea.org)

**Brian Mondragón Jones**  
*Membership Manager*  
[Brian@aaea.org](mailto:Brian@aaea.org)

**Kristen Wright**  
*Meetings Manager*  
[Kwright@aaea.org](mailto:Kwright@aaea.org)

## About Our Organization...

COSBAE's mission is to encourage and promote the interests of black agricultural economics professionals within the AAEA structure and the broader agricultural community. Recognizing the importance of shared knowledge among all colleagues, COSBAE membership is open to all interested parties. Membership is \$10 per year. To join, please contact the AAEA office at [www.aaea.org](http://www.aaea.org).

## Meet the Members



Andrew Muhammad is a Senior Research Economist in the International Demand and Trade Branch, Market and Trade Economics Division of the Economic Research Service, U.S. Department of Agriculture. He joined ERS in 2010. From 2000 to 2006, he was an Assistant and Associate Professor in the College of Business at Southern University in Baton Rouge, Louisiana, and from 2006-2009, he was an Assistant and Associate professor in the Department of Agricultural Economics at Mississippi State University. Andrew served as COSBAE Chair, 2009 to 2010 and COSBAE Past Chair 2010 to 2011.

For more details follow this link:  
<http://blog.aaea.org/2012/02/member-profile-andrew-muhammad.html>

## Executive Committee

### Contact Information

**Chair (2011-2012)**  
William A. Amponsah  
912-478-5086  
[waamponsah@georgiasouthern.edu](mailto:waamponsah@georgiasouthern.edu)

**Chair (2012-2013)**  
**Carlisele Pemberton**  
868-662-2002 ext 83279  
[carlise.pemberton@sta.uwi.edu](mailto:carlise.pemberton@sta.uwi.edu)

**Chair Elect (2012-2013)**  
Ronald L. Rainey  
Phone: 501-671-2175  
[rrainey@uaex.edu](mailto:rrainey@uaex.edu)

**Secretary/Treasurer (2009-2012)**  
Blondel Brinkman  
301-851-3050  
[blondel.brinkman@aphis.usda.gov](mailto:blondel.brinkman@aphis.usda.gov)

**Secretary/Treasurer (2012-2015)**  
Erika Styles  
478-827-3134  
[stylese@fvsu.edu](mailto:stylese@fvsu.edu)