



AgEcon SEARCH
RESEARCH IN AGRICULTURAL & APPLIED ECONOMICS

The World's Largest Open Access Agricultural & Applied Economics Digital Library

This document is discoverable and free to researchers across the globe due to the work of AgEcon Search.

Help ensure our sustainability.

Give to AgEcon Search

AgEcon Search

<http://ageconsearch.umn.edu>

aesearch@umn.edu

*Papers downloaded from **AgEcon Search** may be used for non-commercial purposes and personal study only. No other use, including posting to another Internet site, is permitted without permission from the copyright owner (not AgEcon Search), or as allowed under the provisions of Fair Use, U.S. Copyright Act, Title 17 U.S.C.*

California Department of Food and Agriculture

Agricultural Commissioners' Crop Reports

Colusa County

2005-2009

California County Agricultural Commissioners' Reports from the California Department of Food and Agriculture. This collection consists of annual crop and livestock data from each of the 58 California Counties. The collection covers 1915-1981; digitization of the rest of the collection is forthcoming.

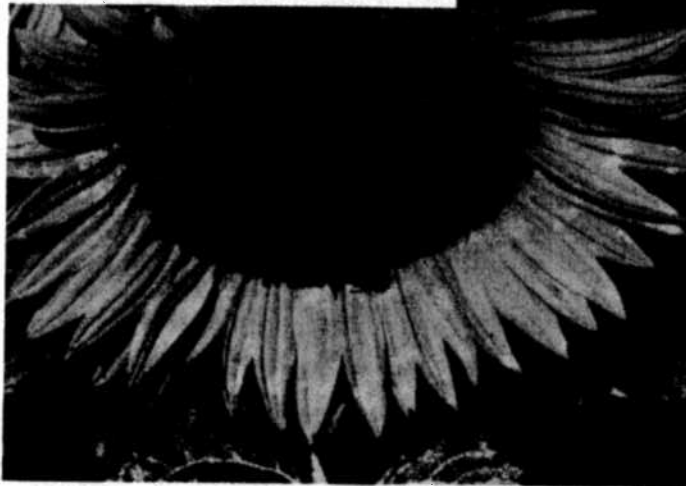
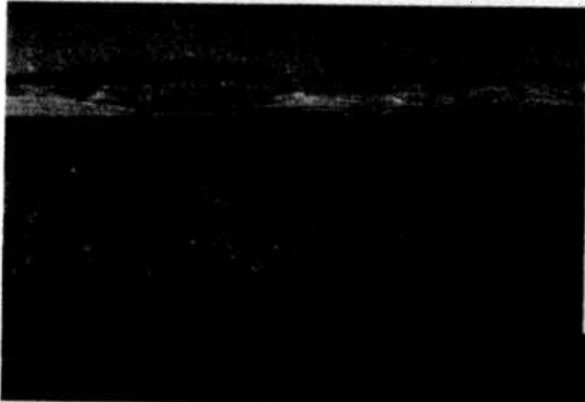
This digitization project was funded by the Giannini Foundation of Agricultural Economics, <http://giannini.ucop.edu/>.

The work was completed by the staff of the Giannini Foundation Library, University of California, Berkeley, <http://are.berkeley.edu/library/>. **Please contact the Library to consult the originals.**

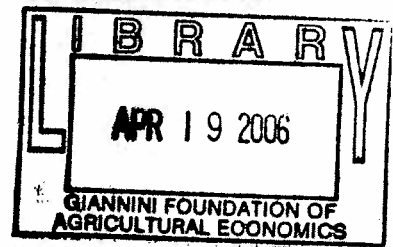
Colusa County, Calif.
Department of Agriculture *commissioner*

Agricultural

2005 Crop Report



Harry A. Krug
Agricultural Commissioner



COLUSA COUNTY
DEPARTMENT OF AGRICULTURE
HARRY A. KRUG
AGRICULTURAL COMMISSIONER/SEALER OF WEIGHTS AND MEASURES
100 SUNRISE BLVD., SUITE F
COLUSA, CA 95932
530-458-0580

TO: Mr. A. G. Kawamura, Secretary
California Department of Food and Agriculture
and The Honorable Board of Supervisors, Colusa County

In accordance with the provisions of Section 2279, of the California Food and Agricultural Code, I am pleased to submit the 2005 Colusa County Crop Report.

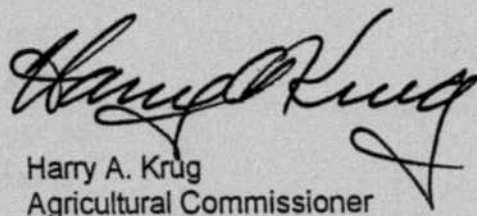
The 2005 crop year total county production value was \$392,677,000, which was a \$41,073,000 increase from 2004 and \$31,104,000 more than the prior all time record high of \$361,573,000 in 2003.

The county's largest crop, rice, had a slight increase in value from 2004 with a total 2005 value of \$124,963,000. This was due to an increase in production value from \$195.00 per ton to \$251.00 per ton in 2005 even though there was a decrease in acreage from 150,130 to 136,400. Almonds remained number two in county ranking, but making large strides towards rice, with a continued increase in overall 2005 value of \$121,968,000 from a 2004 value of \$77,555,000. This was a result of an increase in acreage, unit value and production. Processing tomatoes remained number three with a decreased value of \$42,818,000 compared to the 2004 value of \$44,251,000. This was a result of a decrease in production from 43.0 tons per acre in 2004 to 35.5 tons per acre in 2005. Cattle and Calves remained fourth with a value of \$13,257,000 in 2005 compared to \$12,870,000 in 2004. Seed crop production decreased from a total 2004 dollar value of \$41,571,000 to a 2005 value of \$31,901,000 due to acreage decreases in many of the seed crops, but there were increases in carrot, melon and sunflower seed production.

I must stress that these figures show gross values only, and do not reflect a net return to the producer.

I wish to thank everyone who contributed to this report. I also express appreciation to all of my staff, especially Lee Ann Price and Jon Richter who set up and compiled this report.

Respectfully submitted,


Harry A. Krug
Agricultural Commissioner

COLUSA COUNTY DEPARTMENT OF AGRICULTURE ANNUAL CROP REPORT 2005

2005 COUNTY BOARD OF SUPERVISORS

David G. Womble, Chairperson

Christy K. Scofield, District 1	Mark D. Marshall, District 3
Thomas A. Indrieri, District 2	Gary J. Evans, District 4

OFFICE PERSONNEL

Harry A. Krug	Agricultural Commissioner
Jon Richter	Deputy Agricultural Commissioner
Mary Anne Azevedo	Agricultural Biologist and Standards Officer III
R. Scott Kittle	Agricultural Biologist and Standards Officer III
Jack de Wit	Agricultural Biologist and Standards Officer III
David Brown	Agricultural Biologist and Standards Officer II
Thomas Moss	Agricultural Biologist and Standards Officer II
Casey Stafford	Agricultural Biologist and Standards Officer I
Renee McCormick	Fiscal Administrative Officer
Carla Hendy	Administrative Secretary
Julie Stone	Account Clerk II
Lee Ann Price	Office Assistant III

APIARY PRODUCTION AND VALUE 2005 - 2004

	YEAR	PRODUCTION	UNIT	PER UNIT	VALUE	
						TOTAL
HONEY ¹	2005	25,000	Lb.	\$0.70		\$18,000
	2004	21,000	Lb.	1.15		24,000
PACKAGE BEES ²	2005	6,000	Lb.	9.00		54,000
	2004	5,000	Lb.	8.00		40,000
POLLINATION ³	2005	54,000	Colony	72.00		3,888,000
	2004	45,500	Colony	49.00		2,230,000
QUEENS	2005	26,000	Each	10.00		260,000
	2004	22,500	Each	9.00		203,000
TOTAL	2005					\$4,220,000
	2004					2,497,000

¹ Honey produced by 16,700 colonies in 2005 and 13,400 colonies in 2004, owned by resident beekeepers.
² Includes bulk bees and nuclei.
³ Pollination colonies include all required to pollinate crops grown in Colusa County.

VEGETABLE CROPS

ACREAGE, PRODUCTION AND VALUE 2005 - 2004

CROPS	YEAR	ACREAGE		PRODUCTION			VALUE	
		HARVESTED	PER ACRE	TOTAL	UNIT	PER UNIT	TOTAL	
TOMATOES-PROCESSING	2005	23,650	35.5	839,575	Ton	\$51.00	\$42,818,000	
	2004	20,500	43.0	881,500	Ton	50.20	44,251,000	
MISCELLANEOUS	2005 ¹	79	-----	-----	-----	-----	75,000	
	2004 ²	380	-----	-----	-----	-----	1,043,000	
TOTAL	2005	23,729					\$42,893,000	
	2004	20,880					45,294,000	

¹ Includes bell pepper, cucumbers, melons, pumpkins, squash, sweet corn, tomatoes, turnip and watermelon.

² Includes honeydew melons, sweet corn, tomatoes and watermelon.

FRUIT AND NUT CROPS

ACREAGE, PRODUCTION AND VALUE 2005 - 2004

CROP	YEAR	ACREAGE		PRODUCTION			VALUE	
		HARVESTED	PER ACRE	TOTAL	UNIT	PER UNIT	TOTAL	
ALMONDS - MEATS	2005	26,400	0.84	22,176	Ton	\$5,500.00	\$121,968,000	
	2004	23,360	0.83	19,389	Ton	4,000.00	77,555,000	
ALMONDS - HULLS	2005	-----	-----	27,720	Ton	75.00	2,079,000	
	2004	-----	-----	24,240	Ton	75.00	1,818,000	
PRUNES	2005	1,625	1.20	1,950	Ton	1,400.00	2,730,000	
	2004	2,040	0.55	1,122	Ton	1,160.00	1,302,000	
WALNUTS - ENGLISH	2005	4,640	1.80	8,352	Ton	1,400.00	11,693,000	
	2004	4,590	1.42	6,518	Ton	1,040.00	6,779,000	
MISCELLANEOUS ¹	2005	3,550	-----	-----	-----	-----	14,732,000	
	2004	3,645	-----	-----	-----	-----	12,045,000	
TOTAL	2005	36,215					\$153,202,000	
	2004	33,635					99,499,000	

¹ Includes organic almonds, apples, apricots, black walnuts, wine grapes, olives, peaches, asian pears, pecans, persimmons and pistachios.

FIELD CROPS

ACREAGE, PRODUCTION AND VALUE 2005 - 2004

	YEAR	ACREAGE		PRODUCTION		VALUE	
		HARVESTED	PER ACRE	TOTAL	UNIT	PER UNIT	TOTAL
BARLEY	2005	200	1.10	220	Ton	\$90.00	\$20,000
	2004	400	1.50	600	Ton	95.00	57,000
BEANS - DRY	2005	6,050	0.88	5,324	Ton	720.00	3,833,000
	2004	4,370	1.00	4,370	Ton	660.00	2,884,000
CORN - GRAIN	2005	720	4.40	3,168	Ton	90.00	285,000
	2004	1,410	4.60	6,486	Ton	90.00	584,000
CORN - WHITE	2005	240	4.20	1,008	Ton	130.00	131,000
	2004	850	4.70	3,995	Ton	130.00	519,000
COTTON - LINT	2005	2,940	3.10	9,114	500#	340.00	3,099,000
	2004	4,820	3.30	15,906	500#	350.00	5,567,000
COTTON - SEED	2005	-----	-----	3,870	Ton	140.00	542,000
	2004	-----	-----	5,560	Ton	156.00	867,000
HAY - ALFALFA	2005	6,100	7.20	43,920	Ton	115.00	5,051,000
	2004	5,450	7.00	38,150	Ton	90.00	3,434,000
HAY - ALFALFA CUBE	2005	1,050	7.40	7,770	Ton	135.00	1,049,000
	2004	1,100	7.50	8,250	Ton	120.00	990,000
HAY - GRAIN ¹	2005	3,650	1.70	6,205	Ton	75.00	465,000
	2004	3,410	1.50	5,115	Ton	70.00	358,000
PASTURE - IRRIGATED	2005	800	-----	-----	Acre	125.00	100,000
	2004	850	-----	-----	Acre	125.00	106,000
PASTURE - DRYLAND	2005	190,000	-----	-----	Acre	8.00	1,520,000
	2004	190,000	-----	-----	Acre	7.50	1,425,000
PASTURE - STUBBLE ²	2005	-----	-----	-----	---	-----	120,000
	2004	-----	-----	-----	---	-----	100,000
RICE ³	2005	136,400	3.65	497,860	Ton	251.00	124,963,000
	2004	150,130	4.20	630,546	Ton	195.00	122,956,000
SAFFLOWER	2005	4,200	1.25	5,250	Ton	240.00	1,260,000
	2004	4,950	1.00	4,950	Ton	220.00	1,089,000
WHEAT	2005	13,500	1.70	22,950	Ton	100.00	2,295,000
	2004	24,200	2.50	60,500	Ton	102.00	6,171,000
MISCELLANEOUS	2005 ⁴	-----	-----	-----	---	-----	1,858,000
	2004 ⁵	-----	-----	-----	---	-----	2,146,000
TOTAL	2005	365,850					\$146,591,000
	2004	391,940					149,253,000

¹ Includes wheat, barley, oat, sudangrass and volunteer grain hay.

² Includes alfalfa, wheat and barley stubble.

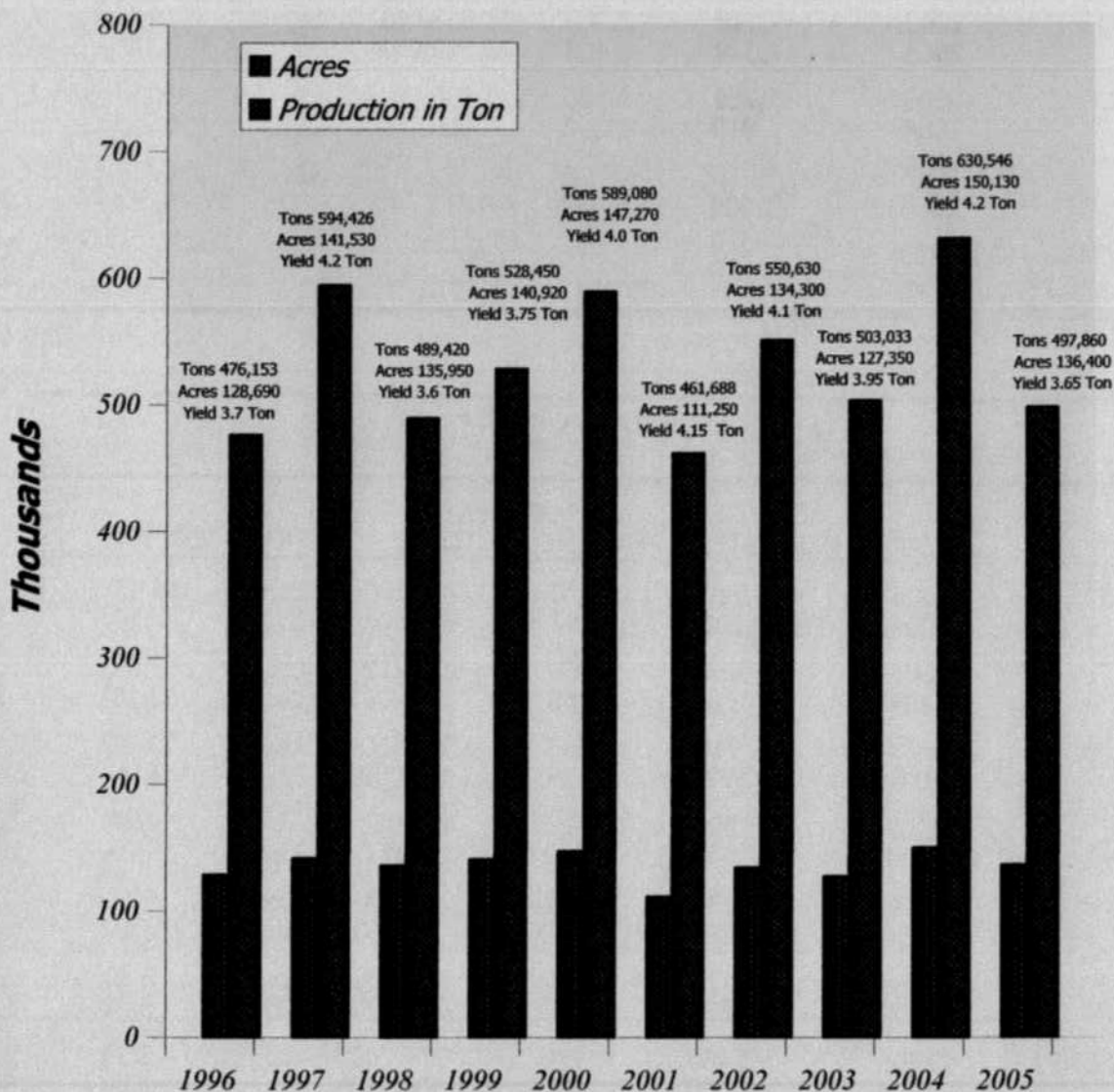
³ Includes all Farm Service Agency payments to growers.

⁴ Includes bean, rice and wheat straw and organic rice.

⁵ Includes bean, rice and wheat straw, ornamental gourds, sorghum grain

RICE 1996-2005

Total Acres/Total Production



SEED CROPS

ACREAGE, PRODUCTION AND VALUE 2005 - 2004

CROP	YEAR	ACREAGE		PRODUCTION		VALUE	
		HARVESTED	PER ACRE	TOTAL	UNIT	PER UNIT	TOTAL
BEANS	2005	500	1,760	880,000	Lb.	\$0.42	\$370,000
	2004	910	1,930	1,756,300	Lb.	0.38	667,000
RICE ¹	2005	7,110	7,300	51,903,000	Lb.	0.15	7,785,000
	2004	8,370	8,400	70,308,000	Lb.	0.14	9,843,000
SUNFLOWERS	2005	1,760	1,100	1,936,000	Lb.	1.15	2,226,000
	2004	810	1,210	980,100	Lb.	0.70	686,000
WHEAT	2005	0	0	0	Lb.	0.00	0
	2004	1,100	4,450	4,895,000	Lb.	0.06	294,000
MISCELLANEOUS	2005 ²	465	-----	-----	-----	-----	144,000
	2004 ³	2,010	-----	-----	-----	-----	831,000
TOTAL	2005	9,835					\$10,525,000
	2004	13,200					12,321,000

NON-CERTIFIED SEED CROPS

CROP	YEAR	ACREAGE		PRODUCTION		VALUE	
		HARVESTED	PER ACRE	TOTAL	UNIT	PER UNIT	TOTAL
CUCUMBERS	2005	4,230	170	719,100	Lb.	\$6.55	\$4,710,000
	2004	5,250	190	997,500	Lb.	7.20	7,182,000
MELONS	2005	650	365	237,250	Lb.	2.65	629,000
	2004	340	360	122,400	Lb.	2.15	263,000
ONIONS	2005	710	505	358,550	Lb.	19.20	6,884,000
	2004	640	625	400,000	Lb.	16.00	6,400,000
CARROTS	2005	590	305	179,950	Lb.	14.20	2,555,000
	2004	440	350	154,000	Lb.	9.00	1,386,000
PUMPKINS	2005	140	210	29,400	Lb.	9.10	268,000
	2004	235	330	77,550	Lb.	6.10	473,000
SQUASH	2005	1,170	280	327,600	Lb.	5.10	1,671,000
	2004	1,880	640	1,203,200	Lb.	5.80	6,979,000
WATERMELONS	2005	3,160	245	774,200	Lb.	3.70	2,865,000
	2004	4,700	320	1,504,000	Lb.	3.80	5,715,000
MISCELLANEOUS	2005 ⁴	1,065	-----	-----	-----	-----	1,794,000
	2004 ⁵	770	-----	-----	-----	-----	852,000
TOTAL	2005	11,715					\$21,376,000
	2004	14,255					29,250,000

¹ Includes all Farm Service Agency payments to growers.

² Asparagus, canola, cotton, safflower and sudangrass.

³ Asparagus, cotton, safflower, sudangrass and watermelon.

⁴ Includes beets, broccoli, brussel sprouts, burdock, cabbage, chard, collards, herbs, kale, mustard, parsley, peas, sudangrass, sunflowers, turnips, organic carrots, herbs, flowers and spices.

⁵ Includes beets, broccoli, brussel sprouts, burdock, cabbage, cauliflower, celery, chard, coriander, herbs, kale, kohlrabi, mustard, parsley, peas, peppers, radish, sudangrass, sunflowers, turnip, organic carrots, herbs, flowers and spices.

LIVESTOCK PRODUCTION AND VALUE 2005 - 2004

ITEMS	YEAR	NUMBER OF HEAD	LIVE WEIGHT	UNIT	VALUE	
					PER UNIT	TOTAL
CATTLE AND CALVES	2005	26,200	146,000	Cwt.	\$90.80	\$13,257,000
	2004	26,500	145,750	Cwt.	88.30	12,870,000
SHEEP AND LAMBS	2005	3,000	3,300	Cwt.	98.90	326,000
	2004	3,200	3,520	Cwt.	90.40	318,000
MISCELLANEOUS ¹	2005	-----	-----	----	-----	255,000
	2004	-----	-----	----	-----	268,000
TOTAL	2005					\$13,838,000
	2004					13,456,000

¹ Includes chickens, goats, hogs and quail.



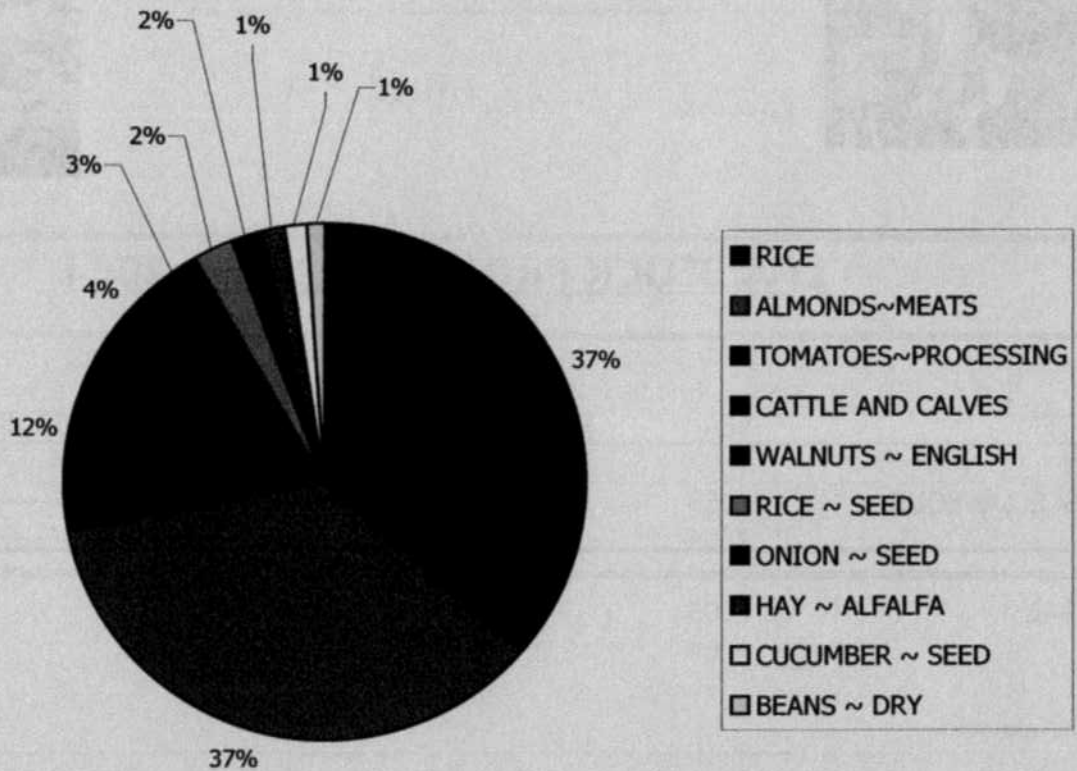
LIVESTOCK PRODUCTS 2005 - 2004

ITEMS	YEAR	PRODUCTION	UNIT	VALUE	
				PER UNIT	TOTAL
MISCELLANEOUS ¹	2005	-----	-----	-----	\$32,000
	2004	-----	-----	-----	34,000
TOTAL	2005				\$32,000
	2004				34,000

¹ Includes wool.

TEN LEADING FARM COMMODITIES 2005 - 2004

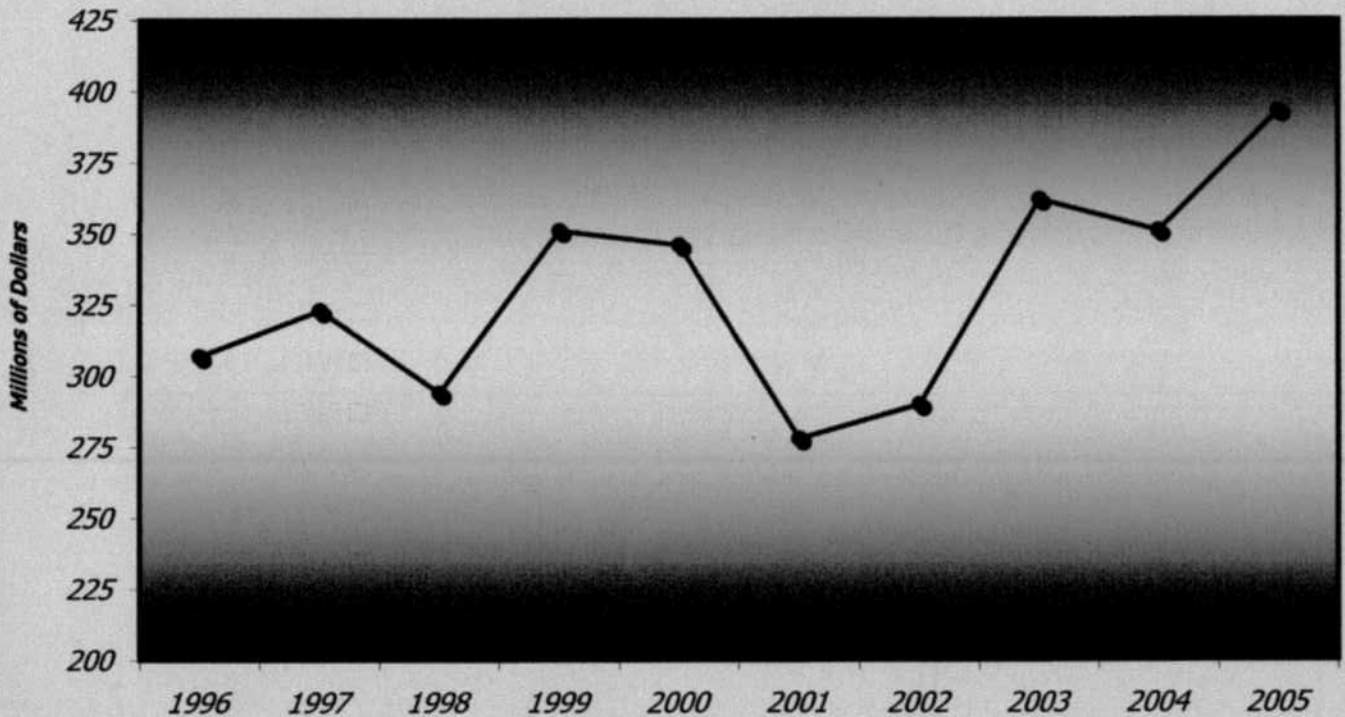
CROP	AMOUNT	2005	2004
RICE	\$124,963,000	1	1
ALMONDS ~ MEATS	121,968,000	2	2
TOMATOES ~ PROCESSING	42,818,000	3	3
CATTLE AND CALVES	13,257,000	4	4
WALNUTS ~ ENGLISH	11,693,000	5	8
RICE ~ SEED	7,785,000	6	5
ONION ~ SEED	6,884,000	7	9
HAY ~ ALFALFA	5,051,000	8	13
CUCUMBER ~ SEED	4,710,000	9	6
BEANS ~ DRY	3,833,000	10	14



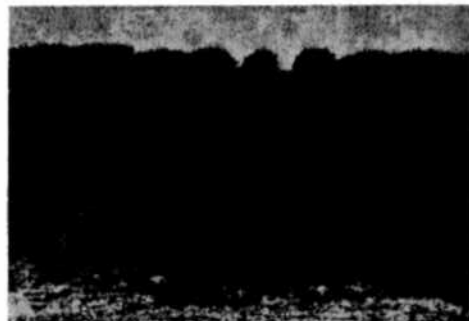
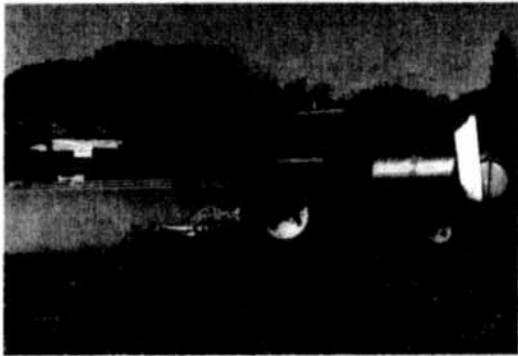
TEN YEAR COMPARISON 2005 - 1996

2005	GRAND TOTAL	\$392,677,000
2004	GRAND TOTAL	351,604,000
2003	GRAND TOTAL	361,573,000
2002	GRAND TOTAL	290,264,000
2001	GRAND TOTAL	277,826,000
2000	GRAND TOTAL	345,906,000
1999	GRAND TOTAL	351,278,000
1998	GRAND TOTAL	293,633,000
1997	GRAND TOTAL	322,922,000
1996	GRAND TOTAL	306,908,000

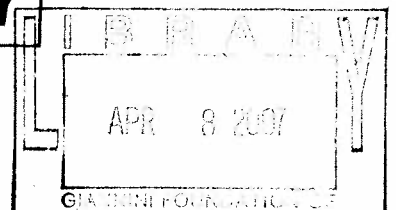
TEN YEAR COMPARISON



Colusa County, Calif. Department of Agriculture 2006^{Annual} Crop Report



Harry A. Krug
Agricultural Commissioner



COLUSA COUNTY
DEPARTMENT OF AGRICULTURE
HARRY A. KRUG
AGRICULTURAL COMMISSIONER/SEALER OF WEIGHTS AND MEASURES
100 SUNRISE BLVD., SUITE F
COLUSA, CA 95932
530-458-0580

TO: Mr. A. G. Kawamura, Secretary
California Department of Food and Agriculture
and The Honorable Board of Supervisors, Colusa County

In accordance with the provisions of Section 2279, of the California Food and Agricultural Code, I am pleased to submit the 2006 Colusa County Crop Report.

The 2006 crop year total county production value was \$422,675,000, which is an all time record high and surpasses the \$400,000,000 mark for the first time. The prior all time high was in 2005 at a value of \$392,677,000.

The county's largest crop, rice, had an increase in value from 2005 with a total 2006 value of \$164,596,000. This was due to an increase in acres, production and unit price. Almonds, second in county ranking, continues to gain on rice, with a continued increase in overall 2006 value of \$122,351,000. This was a result of an increase in acreage and production, but a decrease in unit value. Processing tomatoes remained third in ranking with a slight decrease in value of \$42,427,000 compared to the 2005 value of \$42,818,000. This was a result of a decrease in acreage and an increase in production and unit value. Walnuts, with a value of \$12,661,000 moved ahead of Cattle and Calves, with a value of \$12,181,000. Seed crop production remained fairly steady from a total 2005 dollar value of \$31,901,000 to a 2006 value of \$31,904,000. Onion seed had the largest increase with a value of \$9,612,000 compared to \$6,884,000 due to increase in acreage and production.

I must stress that these figures show gross values only, and do not reflect a net return to the producer.

I wish to thank everyone who contributed to this report. I also express appreciation to all of my staff, especially Lee Ann Price and Jon Richter who set up and compiled this report.

Respectfully submitted,



Harry A. Krug
Agricultural Commissioner

COLUSA COUNTY DEPARTMENT OF AGRICULTURE ANNUAL CROP REPORT 2006

2006 COUNTY BOARD OF SUPERVISORS

Christy K. Scofield, Chairperson

Thomas A. Indrieri, District 2

Gary J. Evans, District 4

Mark D. Marshall, District 3

David G. Womble, District 5

OFFICE PERSONNEL

Harry A. Krug	Agricultural Commissioner
Jon Richter	Assistant Agricultural Commissioner
Mary Anne Azevedo	Agricultural Biologist and Standards Officer III
R. Scott Kittle	Agricultural Biologist and Standards Officer III
Jack de Wit	Agricultural Biologist and Standards Officer III
David Brown	Agricultural Biologist and Standards Officer III
Thomas Moss	Agricultural Biologist and Standards Officer III
Brent Calloway	Agricultural Biologist and Standards Officer I
Renee McCormick	Fiscal Administrative Officer
Carla Hendy	Administrative Secretary II
Lee Ann Price	Account Clerk III
Julie Stone	Account Clerk II

APIARY

PRODUCTION AND VALUE 2006 - 2005

	YEAR	PRODUCTION	UNIT	PER UNIT	VALUE TOTAL
HONEY ¹	2006	10,000	Lb.	\$0.90	\$9,000
	2005	25,000	Lb.	0.70	18,000
PACKAGE BEES ²	2006	5,000	Lb.	10.00	50,000
	2005	6,000	Lb.	9.00	54,000
POLLINATION ³	2006	58,000	Colony	91.40	5,301,000
	2005	54,000	Colony	72.00	3,888,000
QUEENS	2006	19,000	Each	15.00	285,000
	2005	26,000	Each	10.00	260,000
TOTAL	2006				\$5,645,000
	2005				4,220,000

- 1 Honey produced by 17,400 colonies in 2006 and 16,700 colonies in 2005, owned by resident beekeepers.
- 2 Includes bulk bees and nuclei.
- 3 Pollination colonies include all required to pollinate crops grown in Colusa County.



VEGETABLE CROPS

ACREAGE, PRODUCTION AND VALUE 2006 - 2005

CROPS	ACREAGE		PRODUCTION		UNIT	VALUE	
	YEAR	HARVESTED	PER ACRE	TOTAL		PER UNIT	TOTAL
TOMATOES-PROCESSING	2006	18,400	37.8	695,520	Ton	\$61.00	\$42,427,000
	2005	23,650	35.5	839,575	Ton	51.00	42,818,000
MISCELLANEOUS	2006 ¹	85	-----	-----	-----	-----	92,000
	2005 ²	79	-----	-----	-----	-----	75,000
TOTAL	2006	18,485					\$42,519,000
	2005	23,729					42,893,000

¹ Includes bell pepper, cucumbers, melons, okra, peas, pumpkins, radish, squash, sweet corn, swiss chard, tomatoes, turnips and watermelon.

² Includes bell pepper, cucumbers, melons, pumpkins, squash, sweet corn, tomatoes, turnips and watermelon.



FRUIT AND NUT CROPS

ACREAGE, PRODUCTION AND VALUE 2006 - 2005

CROP	YEAR	ACREAGE		PRODUCTION		UNIT	VALUE	
		HARVESTED	PER ACRE	TOTAL	PER UNIT		TOTAL	
ALMONDS - MEATS	2006	28,600	0.93	26,598	Ton	\$4,200.00	\$111,712,000	
	2005	26,400	0.84	22,176	Ton	5,500.00	121,968,000	
ALMONDS - HULLS	2006	-----	-----	33,250	Ton	70.00	2,328,000	
	2005	-----	-----	27,720	Ton	75.00	2,079,000	
PRUNES	2006	1,650	1.90	3,135	Ton	1,300.00	4,076,000	
	2005	1,625	1.20	1,950	Ton	1,400.00	2,730,000	
WALNUTS - ENGLISH	2006	4,720	1.85	8,732	Ton	1,450.00	12,661,000	
	2005	4,640	1.80	8,352	Ton	1,400.00	11,693,000	
MISCELLANEOUS ¹	2006	3,180	-----	-----	-----	-----	11,852,000	
	2005	3,550	-----	-----	-----	-----	14,732,000	
TOTAL	2006	38,150					\$142,629,000	
	2005	36,215					153,202,000	

¹ Includes organic almonds, apples, apricots, asian pears, black walnuts, wine grapes, olives, nectarines, peaches, pecans, persimmons and pistachios and pomegranates.





FIELD CROPS

ACREAGE, PRODUCTION AND VALUE 2006 - 2005

	YEAR	ACREAGE		PRODUCTION		VALUE	
		HARVESTED	PER ACRE	TOTAL	UNIT	PER UNIT	TOTAL
BARLEY	2006	0	0.00	0	Ton	\$0.00	\$0
	2005	200	1.10	220	Ton	90.00	20,000
BEANS - DRY	2006	6,400	0.90	5,760	Ton	760.00	4,378,000
	2005	6,050	0.88	5,324	Ton	720.00	3,833,000
CORN - GRAIN	2006	410	4.20	1,722	Ton	100.00	172,000
	2005	720	4.40	3,168	Ton	90.00	285,000
CORN - WHITE	2006	0	0.00	0	Ton	0.00	0
	2005	240	4.20	1,008	Ton	130.00	131,000
COTTON - LINT	2006	2,720	2.60	7,072	500#	350.00	2,475,000
	2005	2,940	3.10	9,114	500#	340.00	3,099,000
COTTON - SEED	2006	-----	-----	3,005	Ton	180.00	541,000
	2005	-----	-----	3,870	Ton	140.00	542,000
HAY - ALFALFA	2006	7,050	6.50	45,825	Ton	110.00	5,041,000
	2005	6,100	7.20	43,920	Ton	115.00	5,051,000
HAY - ALFALFA CUBE	2006	950	6.60	6,270	Ton	130.00	815,000
	2005	1,050	7.40	7,770	Ton	135.00	1,049,000
HAY - GRAIN ¹	2006	3,100	1.90	5,890	Ton	75.00	442,000
	2005	3,650	1.70	6,205	Ton	75.00	465,000
PASTURE - IRRIGATED	2006	825	-----	-----	Acre	150.00	123,750
	2005	800	-----	-----	Acre	125.00	100,000
PASTURE - DRYLAND	2006	190,000	-----	-----	Acre	10.00	1,900,000
	2005	190,000	-----	-----	Acre	8.00	1,520,000
PASTURE - STUBBLE ²	2006	-----	-----	-----	---	-----	130,000
	2005	-----	-----	-----	---	-----	120,000
RICE ³	2006	142,600	4.05	577,530	Ton	285.00	164,596,000
	2005	136,400	3.65	497,860	Ton	251.00	124,963,000
SAFFLOWER	2006	3,840	1.00	3,840	Ton	265.00	1,018,000
	2005	4,200	1.25	5,250	Ton	240.00	1,260,000
WHEAT	2006	14,700	1.50	22,050	Ton	110.00	2,426,000
	2005	13,500	1.70	22,950	Ton	100.00	2,295,000
MISCELLANEOUS	2006 ⁴	-----	-----	-----	---	-----	2,774,000
	2005 ⁵	-----	-----	-----	---	-----	1,858,000
TOTAL	2006	372,595					\$186,831,750
	2005	365,850					146,591,000

¹ Includes wheat, barley, oat, sudangrass and volunteer grain hay.

² Includes alfalfa, wheat and barley stubble.

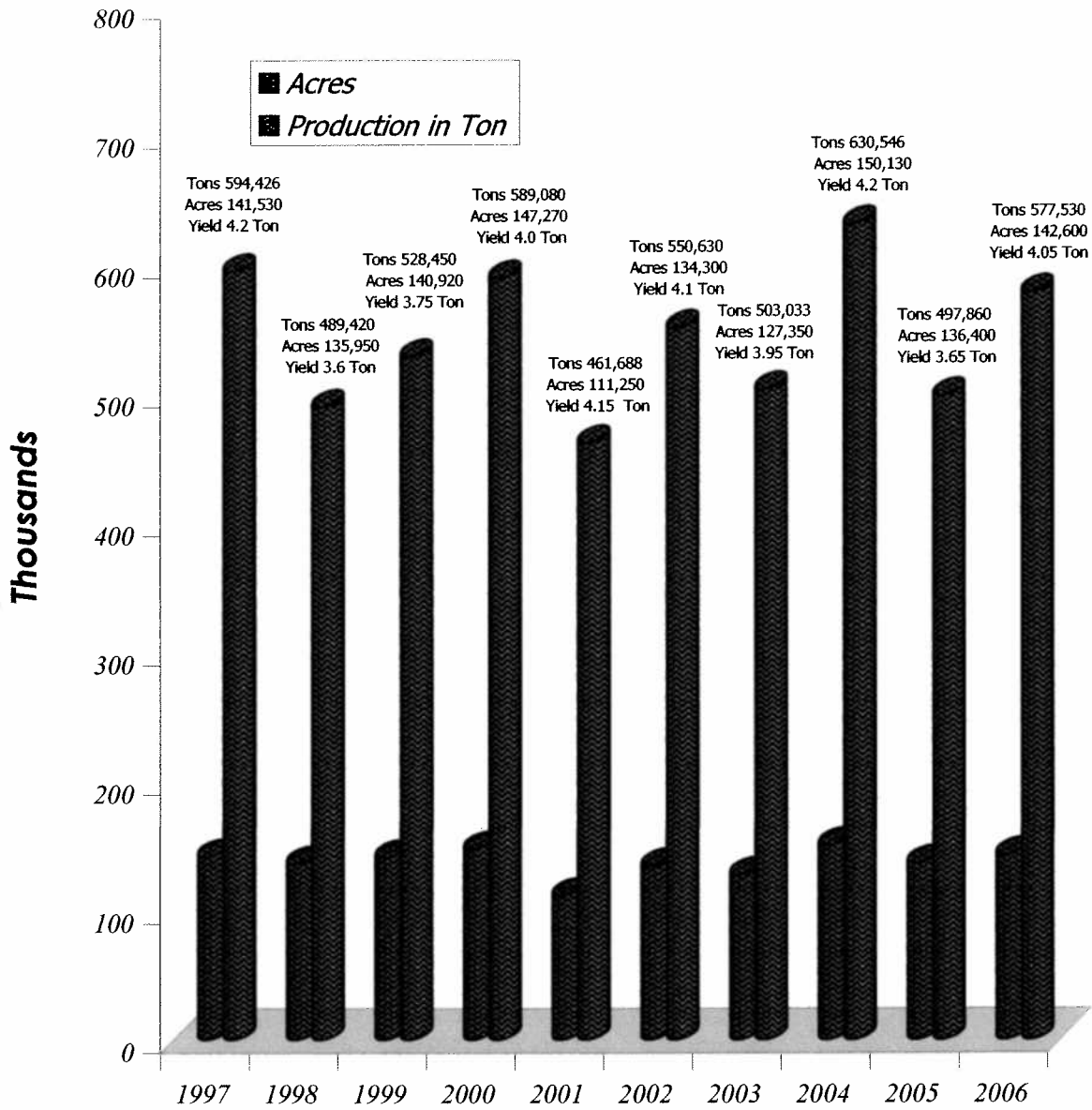
³ Includes all Farm Service Agency payments to growers.

⁴ Includes bean, rice, wheat straw, organic rice and sorghum grain.

⁵ Includes bean, rice, wheat straw and organic rice.

RICE 1997-2006

Total Acres/Total Production





SEED CROPS

ACREAGE, PRODUCTION AND VALUE 2006 - 2005

CROP	YEAR	ACREAGE		PRODUCTION		VALUE	
		HARVESTED	PER ACRE	TOTAL	UNIT	PER UNIT	TOTAL
BEANS	2006	330	1,780	587,400	Lb.	\$0.44	\$258,000
	2005	500	1,760	880,000	Lb.	0.42	370,000
RICE ¹	2006	6,550	7,900	51,745,000	Lb.	0.16	8,279,000
	2005	7,110	7,300	51,903,000	Lb.	0.15	7,785,000
SUNFLOWERS	2006	2,180	1,000	2,180,000	Lb.	0.80	1,744,000
	2005	1,760	1,100	1,936,000	Lb.	1.15	2,226,000
WHEAT	2006	120	300	36,000	Lb.	0.07	3,000
	2005	0	0	0	Lb.	0.00	0
MISCELLANEOUS	2006 ²	570	-----	-----	-----	-----	159,000
	2005 ³	465	-----	-----	-----	-----	144,000
TOTAL	2006	9,750					\$10,443,000
	2005	9,835					10,525,000

NON-CERTIFIED SEED CROPS

CROP	YEAR	ACREAGE		PRODUCTION		VALUE	
		HARVESTED	PER ACRE	TOTAL	UNIT	PER UNIT	TOTAL
CUCUMBERS	2006	2,040	260	530,400	Lb.	\$7.15	\$3,792,000
	2005	4,230	170	719,100	Lb.	6.55	4,710,000
MELONS	2006	505	440	222,200	Lb.	2.95	655,000
	2005	650	365	237,250	Lb.	2.65	629,000
ONIONS	2006	1,140	475	541,500	Lb.	17.75	9,612,000
	2005	710	505	358,550	Lb.	19.20	6,884,000
CARROTS	2006	300	225	67,500	Lb.	12.50	844,000
	2005	590	305	179,950	Lb.	14.20	2,555,000
PUMPKINS	2006	102	275	28,050	Lb.	7.10	199,000
	2005	140	210	29,400	Lb.	9.10	268,000
SQUASH	2006	975	320	312,000	Lb.	5.90	1,841,000
	2005	1,170	280	327,600	Lb.	5.10	1,671,000
WATERMELONS	2006	2,965	286	847,990	Lb.	3.25	2,756,000
	2005	3,160	245	774,200	Lb.	3.70	2,865,000
MISCELLANEOUS	2006 ⁴	1,810	-----	-----	-----	-----	1,762,000
	2005 ⁵	1,065	-----	-----	-----	-----	1,794,000
TOTAL	2006	9,837					\$21,461,000
	2005	11,715					21,376,000



¹ Includes all Farm Service Agency payments to growers.

² Asparagus, canola, cotton, safflower and sudangrass.

³ Asparagus, cotton, safflower, sudangrass and watermelon.

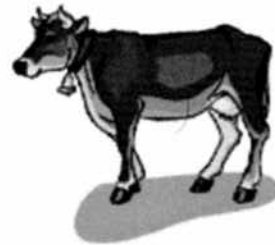
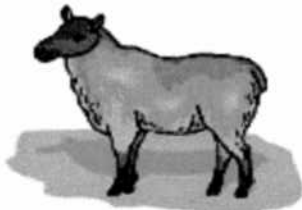
⁴ Includes beets, broccoli, brussel sprouts, burdock, cabbage, chard, collards, herbs, kale, mustard, parsley, peas, sudangrass, sunflowers, turnips, organic carrots, herbs, flowers and spices.

⁵ Includes beets, broccoli, brussel sprouts, burdock, cabbage, cauliflower, celery, chard, coriander, herbs, kale, kohlrabi mustard, parsley, peas, peppers, radish, sudangrass, sunflowers, turnip, organic carrots, flowers and spices.

LIVESTOCK PRODUCTION AND VALUE 2006 - 2005

ITEMS	YEAR	NUMBER OF HEAD	LIVE WEIGHT	UNIT	VALUE	
					PER UNIT	TOTAL
CATTLE AND CALVES	2006	24,800	136,400	Cwt.	\$89.30	\$12,181,000
	2005	26,200	146,000	Cwt.	90.80	13,257,000
SHEEP AND LAMBS	2006	2,600	2,860	Cwt.	85.00	243,000
	2005	3,000	3,300	Cwt.	98.90	326,000
MISCELLANEOUS ¹	2006	-----	-----	----	-----	695,000
	2005	-----	-----	----	-----	255,000
TOTAL	2006					\$13,119,000
	2005					13,838,000

¹ Includes chickens, goats, hogs and quail.



LIVESTOCK PRODUCTS 2006 - 2005

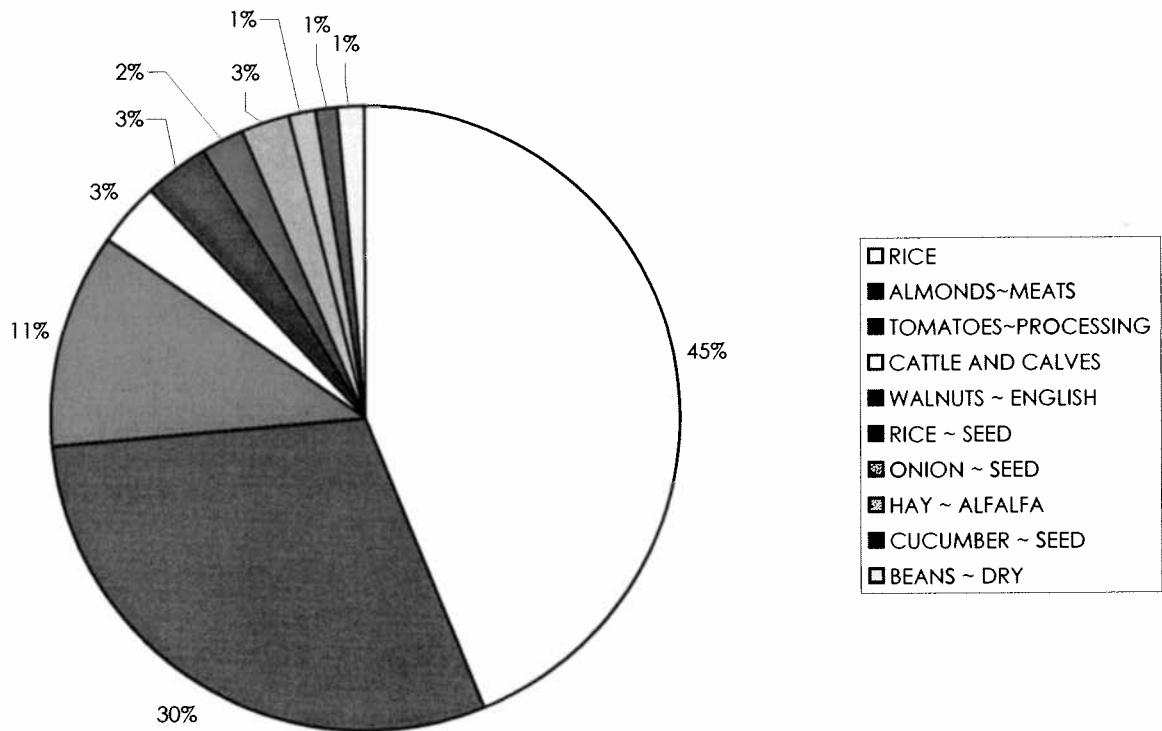
ITEMS	YEAR	PRODUCTION	UNIT	VALUE	
				PER UNIT	TOTAL
MISCELLANEOUS ¹	2006	-----	-----	-----	\$27,500
	2005	-----	-----	-----	32,000
TOTAL	2006				\$27,500
	2005				32,000

¹ Includes wool.



TEN LEADING FARM COMMODITIES 2006 - 2005

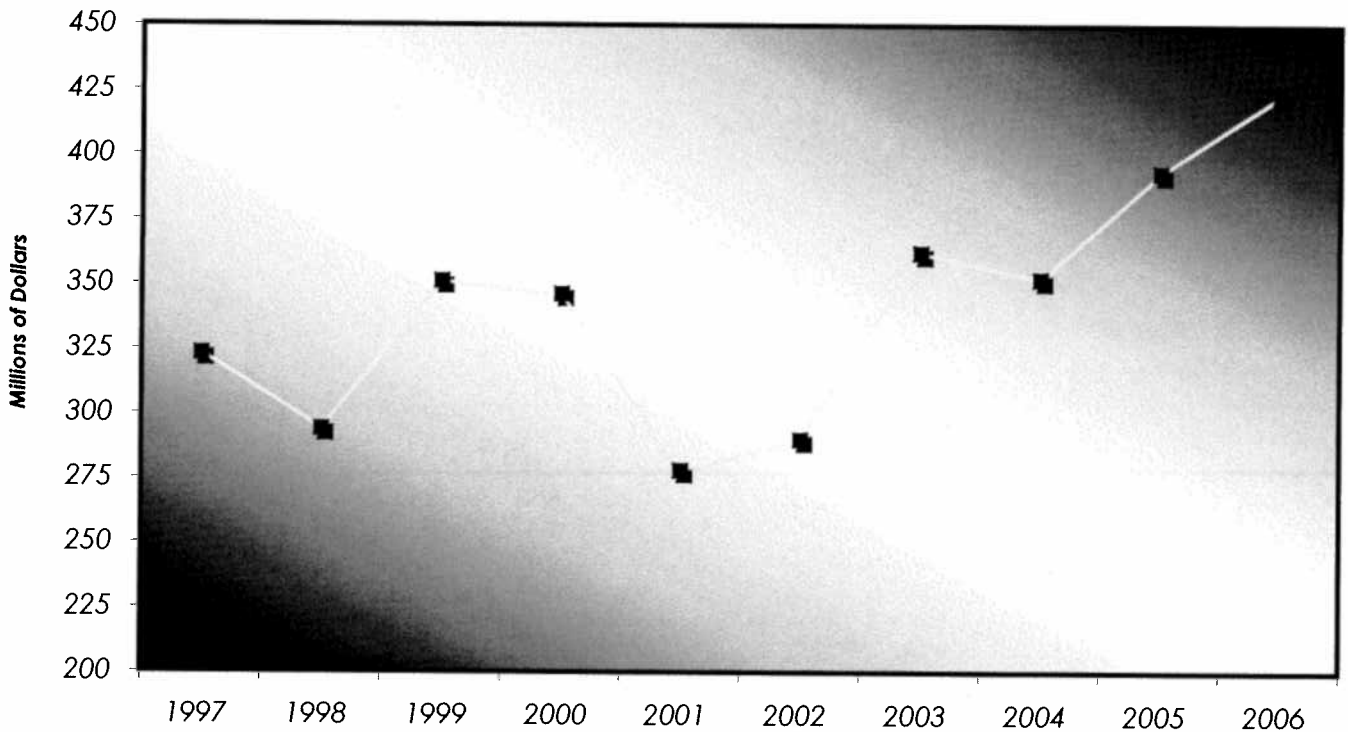
CROP	AMOUNT	2006	2005
RICE	\$164,596,000	1	1
ALMONDS ~ MEATS	111,712,000	2	2
TOMATOES ~ PROCESSING	42,427,000	3	3
WALNUTS ~ ENGLISH	12,661,000	4	5
CATTLE & CALVES	12,181,000	5	4
ONION ~ SEED	9,612,000	6	7
RICE ~ SEED	8,279,000	7	6
POLLINATION	5,301,000	8	10
HAY ~ ALFALFA	5,051,000	9	8
BEANS ~ DRY	3,833,000	10	11



TEN YEAR COMPARISON 2006 - 1997

2006	GRAND TOTAL	422,675,000
2005	GRAND TOTAL	392,677,000
2004	GRAND TOTAL	351,604,000
2003	GRAND TOTAL	361,573,000
2002	GRAND TOTAL	290,264,000
2001	GRAND TOTAL	277,826,000
2000	GRAND TOTAL	345,906,000
1999	GRAND TOTAL	351,278,000
1998	GRAND TOTAL	293,633,000
1997	GRAND TOTAL	322,922,000

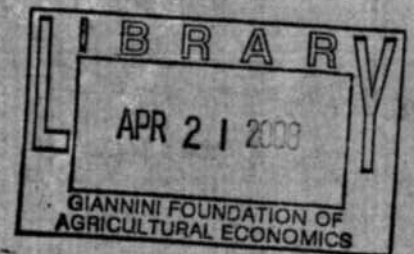
TEN YEAR COMPARISON



Colusa County, Calif. Agricultural
Commissioner
Department of Agriculture
2007
Annual Crop Report



Harry A. Krug
Agricultural Commissioner



COLUSA COUNTY
DEPARTMENT OF AGRICULTURE
HARRY A. KRUG
AGRICULTURAL COMMISSIONER/SEALER OF WEIGHTS AND MEASURES
100 SUNRISE BLVD., SUITE F
COLUSA, CA 95932
530-458-0580

TO: Mr. A. G. Kawamura, Secretary
California Department of Food and Agriculture
and The Honorable Board of Supervisors, Colusa County

In accordance with the provisions of Section 2279, of the California Food and Agricultural Code, I am pleased to submit the 2007 Colusa County Crop Report.

The 2007 crop year total county production value was \$484,525,000, which was another record high and exceeds last year's value of \$422,729,000.

The county's largest crop, rice, had an increase in value from 2006 with a total 2007 value of \$188,027,000. This was due to an increase in acres, production and unit price. Almonds, second in county ranking, continue to increase with a 2007 value of \$122,667,000. This was a result of an increase in acreage and production, but a decrease in unit value. Processing tomatoes remained third in ranking with a slight increase in value of \$45,634,000 compared to the 2006 value of \$42,427,000. This was a result of a decrease in acreage and an increase in production and unit value. Wheat and Corn made the top ten list with values of \$9,893,000 and \$6,163,000 respectively due to large increases in production acreage. Seed crop production remained fairly steady from a total 2006 dollar value of \$31,958,000 to a 2007 value of \$30,783,000. Rice seed had the largest increase with a value of \$12,325,000 compared to \$8,279,000 due to increase in acreage, production and unit value.

I must stress that these figures show gross values only, and do not reflect a net return to the producer.

I wish to thank everyone who contributed to this report. I also express appreciation to all of my staff, especially Jon Richter, Assistant Agricultural Commissioner, who compiled this report.

Respectfully submitted,


Harry A. Krug
Agricultural Commissioner

COLUSA COUNTY DEPARTMENT OF AGRICULTURE ANNUAL CROP REPORT 2007

2007 COUNTY BOARD OF SUPERVISORS

Mark D. Marshall, Chairperson

Kim Vann, District 1
Thomas Indrieri, District 2

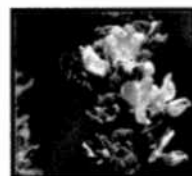
Gary J. Evans, District 4
Dan Yerxa, District 5

OFFICE PERSONNEL

Harry A. Krug	Agricultural Commissioner
Jon Richter	Assistant Agricultural Commissioner
Mary Anne Azevedo	Agricultural Biologist and Standards Officer III
R. Scott Kittle	Agricultural Biologist and Standards Officer III
Jack de Wit	Agricultural Biologist and Standards Officer III
David Brown	Agricultural Biologist and Standards Officer III
Thomas Moss	Agricultural Biologist and Standards Officer III
Brent Calloway	Agricultural Biologist and Standards Officer I
Renee McCormick	Fiscal Administrative Officer
Carla Hendy	Administrative Secretary II
Lee Ann Price	Account Clerk III
Jen Ziglar	Office Assistant

APIARY PRODUCTION AND VALUE 2007 - 2006

	YEAR	PRODUCTION	UNIT	PER UNIT	VALUE TOTAL
HONEY ¹	2007	12,000	Lb.	\$1.50	\$18,000
	2006	10,000	Lb.	0.90	9,000
PACKAGE BEES ²	2007	6,000	Lb.	10.00	60,000
	2006	5,000	Lb.	10.00	50,000
POLLINATION ³	2007	62,000	Colony	98.50	6,107,000
	2006	58,000	Colony	91.40	5,301,000
QUEENS	2007	39,000	Each	15.00	585,000
	2006	19,000	Each	15.00	285,000
TOTAL	2007				\$6,770,000
	2006				5,645,000



- 1 Honey produced by 17,100 colonies in 2007 and 17,400 colonies in 2006, owned by resident beekeepers.
- 2 Includes bulk bees and nuclei.
- 3 Pollination colonies include all required to pollinate crops grown in Colusa County.

VEGETABLE CROPS

ACREAGE, PRODUCTION AND VALUE 2007- 2006

CROPS	ACREAGE		PRODUCTION			VALUE	
	YEAR	HARVESTED	PER ACRE	TOTAL	UNIT	PER UNIT	TOTAL
TOMATOES-PROCESSING	2007	16,500	43.9	724,350	Ton	\$63.00	\$45,634,000
	2006	18,400	37.8	695,520	Ton	61.00	42,427,000
MISCELLANEOUS	2007 ¹	110	-----	-----	-----	-----	3,323,000
	2006 ²	85	-----	-----	-----	-----	92,000
TOTAL	2007	16,610					\$48,957,000
	2006	18,485					42,519,000

¹ Includes beans, bell pepper, cucumbers, melons, mushrooms, okra, peas, pumpkins, radish squash, sweet corn, swiss chard, tomatoes, turnips and watermelon.

² Includes bell pepper, cucumbers, melons, okra, peach, pumpkins, radish, squash, sweet corn, swiss chard, tomatoes, turnips and watermelon.



FRUIT AND NUT CROPS

ACREAGE, PRODUCTION AND VALUE 2007 - 2006

CROP	ACREAGE		PRODUCTION			VALUE	
	YEAR	HARVESTED	PER ACRE	TOTAL	UNIT	PER UNIT	TOTAL
ALMONDS - MEATS	2007	30,700	1.11	34,077	Ton	\$3,600.00	\$122,677,000
	2006	28,600	0.93	26,598	Ton	4,200.00	111,712,000
ALMONDS - HULLS	2007	-----	-----	42,600	Ton	90.00	3,834,000
	2006	-----	-----	33,250	Ton	70.00	2,328,000
PRUNES	2007	1,310	0.80	1,048	Ton	1,420.00	1,488,000
	2006	1,650	1.90	3,135	Ton	1,300.00	4,076,000
WALNUTS - ENGLISH	2007	4,760	1.60	7,616	Ton	2,100.00	15,994,000
	2006	4,720	1.85	8,732	Ton	1,450.00	12,661,000
MISCELLANEOUS ¹	2007	3,365	-----	-----	-----	-----	13,028,000
	2006	3,180	-----	-----	-----	-----	11,852,000
TOTAL	2007	40,135					\$157,021,000
	2006	38,150					142,629,000

¹ Includes organic almonds, apples, apricots, asian pears, black walnuts, wine grapes, olives, nectarines, peaches, pecans, persimmons, pistachios and pomegranates.



FIELD CROPS

ACREAGE, PRODUCTION AND VALUE 2007 - 2006

	YEAR	ACREAGE		PRODUCTION		VALUE	
		HARVESTED	PER ACRE	TOTAL	UNIT	PER UNIT	TOTAL
BARLEY	2007	620	1.50	930	Ton	\$160.00	\$149,000
	2006	0	0.00	0	Ton	0.00	0
BEANS - DRY	2007	6,100	1.10	6,710	Ton	820.00	5,502,000
	2006	6,400	0.90	5,760	Ton	760.00	4,378,000
CORN - GRAIN	2007	6,420	6.00	38,520	Ton	160.00	6,163,000
	2006	410	4.20	1,722	Ton	100.00	172,000
COTTON - LINT	2007	930	2.40	2,232	500#	370.00	826,000
	2006	2,720	2.60	7,072	500#	350.00	2,475,000
COTTON - SEED	2007	-----	-----	950	Ton	210.00	200,000
	2006	-----	-----	3,005	Ton	180.00	541,000
HAY - ALFALFA	2007	9,200	7.50	69,000	Ton	140.00	9,660,000
	2006	7,050	6.50	45,825	Ton	110.00	5,041,000
HAY - ALFALFA CUBE	2007	850	7.70	6,545	Ton	165.00	1,080,000
	2006	950	6.60	6,270	Ton	130.00	815,000
HAY - GRAIN ¹	2007	3,800	1.60	6,080	Ton	100.00	608,000
	2006	3,100	1.90	5,890	Ton	75.00	442,000
PASTURE - IRRIGATED	2007	950	-----	-----	Acre	150.00	142,500
	2006	825	-----	-----	Acre	150.00	123,750
PASTURE - DRYLAND	2007	190,000	-----	-----	Acre	10.00	1,900,000
	2006	190,000	-----	-----	Acre	10.00	1,900,000
PASTURE - STUBBLE ²	2007	-----	-----	-----	---	-----	165,000
	2006	-----	-----	-----	---	-----	130,000
RICE ³	2007	148,550	4.15	616,483	Ton	305.00	188,027,000
	2006	142,600	4.05	577,530	Ton	285.00	164,596,000
SAFFLOWER	2007	7,650	1.10	8,415	Ton	360.00	3,029,000
	2006	3,840	1.00	3,840	Ton	265.00	1,018,000
WHEAT	2007	22,900	2.40	54,960	Ton	180.00	9,893,000
	2006	14,700	1.50	22,050	Ton	110.00	2,426,000
MISCELLANEOUS ⁴	2007	-----	-----	-----	---	-----	3,382,000
	2006	-----	-----	-----	---	-----	2,774,000
TOTAL	2007	397,970					\$230,726,500
	2006	372,595					186,831,750

¹ Includes wheat, barley, oat, sudangrass and volunteer grain hay.

² Includes alfalfa, wheat and barley stubble.

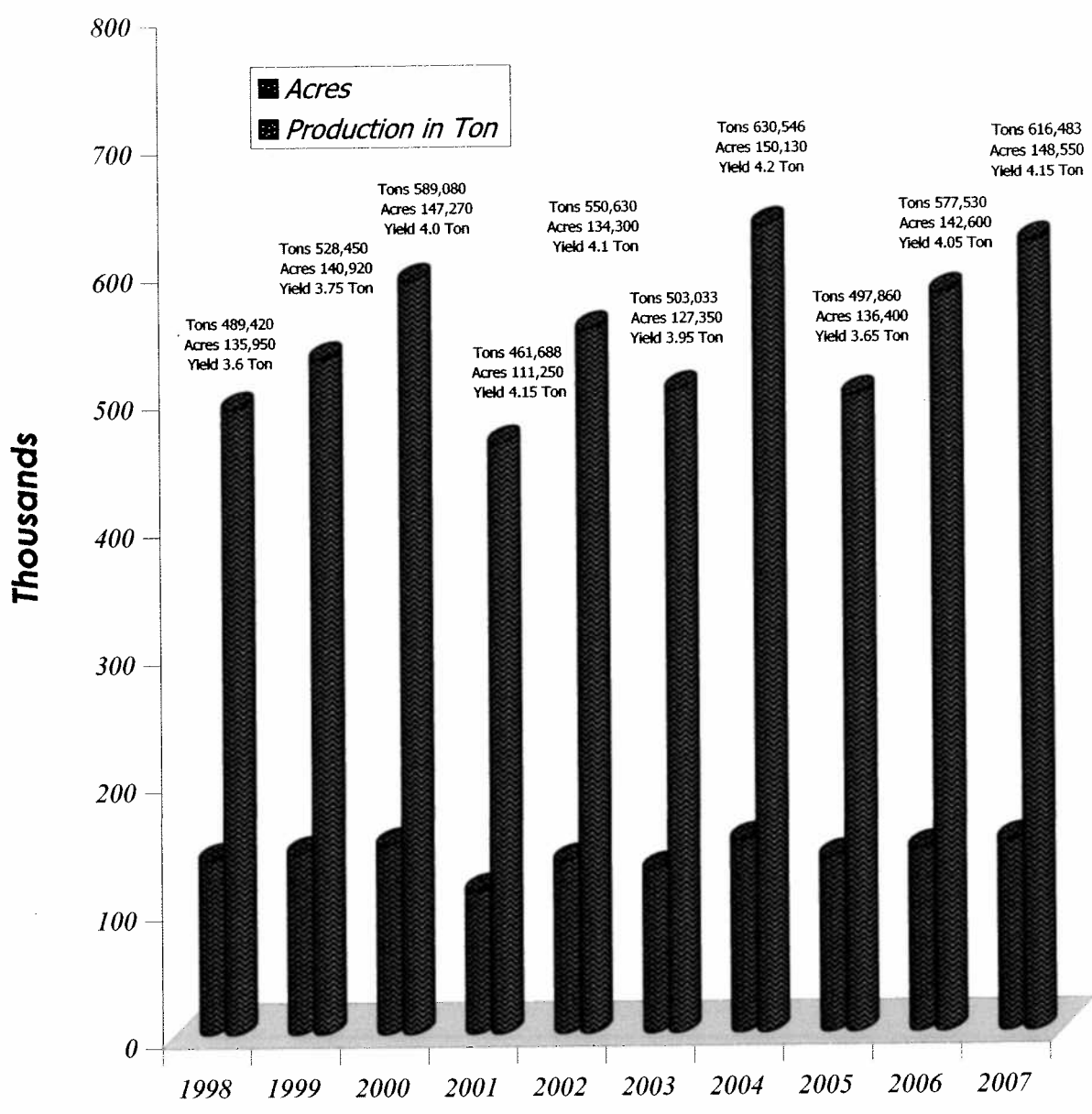
³ Includes all Farm Service Agency payments to growers.

⁴ Includes beans, rice, wheat straw, organic rice and sorghum grain.



RICE 1998-2007

TOTAL ACRES/TOTAL PRODUCTION



SEED CROPS

ACREAGE, PRODUCTION AND VALUE 2007 - 2006

CROP	YEAR	ACREAGE		PRODUCTION		VALUE	
		HARVESTED	PER ACRE	TOTAL	UNIT	PER UNIT	TOTAL
BEANS	2007	190	1,980	376,200	Lb.	\$0.48	\$181,000
	2006	330	1,780	587,400	Lb.	0.44	258,000
RICE ¹	2007	8,350	8,200	68,470,000	Lb.	0.18	12,325,000
	2006	6,550	7,900	51,745,000	Lb.	0.16	8,279,000
SUNFLOWERS	2007	1,790	1,610	2,881,900	Lb.	0.95	2,738,000
	2006	2,180	1,000	2,180,000	Lb.	0.80	1,744,000
WHEAT	2007	670	4,000	2,680,000	Lb.	0.10	268,000
	2006	120	3,000	360,000	Lb.	0.07	25,000
MISCELLANEOUS	2007 ²	490	-----	-----	-----	-----	181,000
	2006 ³	570	-----	-----	-----	-----	159,000
TOTAL	2007	11,490					\$15,693,000
	2006	9,750					10,465,000

NON-CERTIFIED SEED CROPS

CROP	YEAR	ACREAGE		PRODUCTION		VALUE	
		HARVESTED	PER ACRE	TOTAL	UNIT	PER UNIT	TOTAL
CUCUMBERS	2007	1,550	195	302,250	Lb.	\$8.25	\$2,494,000
	2006	2,040	260	530,400	Lb.	7.15	3,792,000
MELONS	2007	240	480	115,200	Lb.	2.15	248,000
	2006	505	440	222,200	Lb.	2.95	655,000
ONIONS	2007	890	305	271,450	Lb.	20.50	5,565,000
	2006	1,140	475	541,500	Lb.	17.75	9,612,000
CARROTS	2007	280	190	53,200	Lb.	16.50	878,000
	2006	300	225	67,500	Lb.	12.50	844,000
PUMPKINS	2007	90	350	31,500	Lb.	6.70	211,000
	2006	102	275	28,050	Lb.	7.10	199,000
SQUASH	2007	650	340	221,000	Lb.	6.80	1,503,000
	2006	975	320	312,000	Lb.	5.90	1,841,000
WATERMELONS	2007	1,550	325	503,750	Lb.	3.75	1,889,000
	2006	2,965	286	847,990	Lb.	3.25	2,756,000
MISCELLANEOUS	2007 ⁴	2,320	-----	-----	-----	-----	2,302,000
	2006 ⁵	1,810	-----	-----	-----	-----	1,794,000
TOTAL	2007	7,570					\$15,090,000
	2006	9,837					21,493,000

¹ Includes all Farm Service Agency payments to growers.

² Asparagus, cotton, safflower, watermelon.

³ Asparagus, cotton, safflower, sudangrass.

⁴ Beets, broccoli, brussel sprouts, burdock, cabbage, canola, cauliflower, chard, collards, gourds, herbs, kale, leeks, mustard, oats, organic carrots, herbs, flowers and spices, parsley, peas, sorghum, sudangrass, sunflowers, tomato, turnips, zinnia.

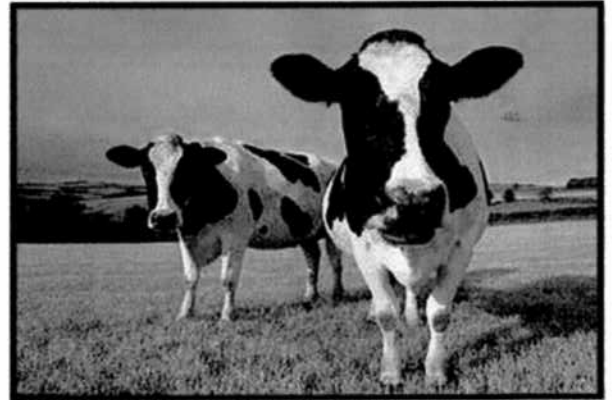
⁵ Includes beets, broccoli, brussel sprouts, burdock, cabbage, chard, collards, herbs, kale, mustard, parsley, peas, sudangrass, sunflowers, turnips, organic carrots, herbs, flowers and spices.

LIVESTOCK PRODUCTION AND VALUE 2007 - 2006

ITEMS	YEAR	NUMBER OF HEAD	LIVE WEIGHT	UNIT	VALUE	
					PER UNIT	TOTAL
CATTLE AND CALVES	2007	21,440	96,500	Cwt.	\$93.70	\$9,042,000
	2006	24,800	136,400	Cwt.	89.30	12,181,000
SHEEP AND LAMBS	2007	2,400	2,640	Cwt.	90.50	239,000
	2006	2,600	2,860	Cwt.	85.00	243,000
MISCELLANEOUS	2007 ¹	-----	-----	---	-----	962,000
	2006 ²	-----	-----	---	-----	695,000
TOTAL	2007					\$10,243,000
	2006					13,119,000

¹ Includes chickens, chukars, goats, hogs, pheasants and quail.

² Includes chickens, goats, hogs and quail.



LIVESTOCK PRODUCTS 2007 - 2006

ITEMS	YEAR	PRODUCTION	UNIT	VALUE	
				PER UNIT	TOTAL
MISCELLANEOUS ¹	2007	-----	-----	-----	\$24,500
	2006	-----	-----	-----	27,500
TOTAL	2007				\$24,500
	2006				27,500

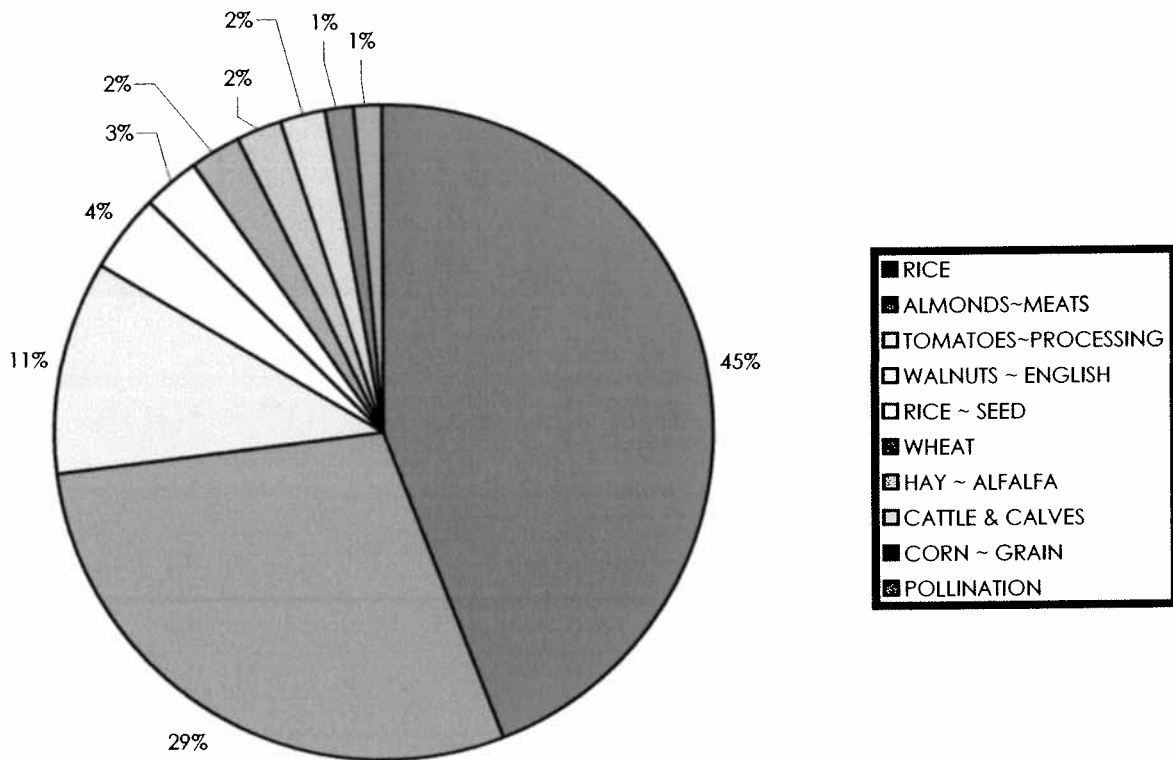
¹ Includes wool.





TEN LEADING FARM COMMODITIES 2007 - 2006

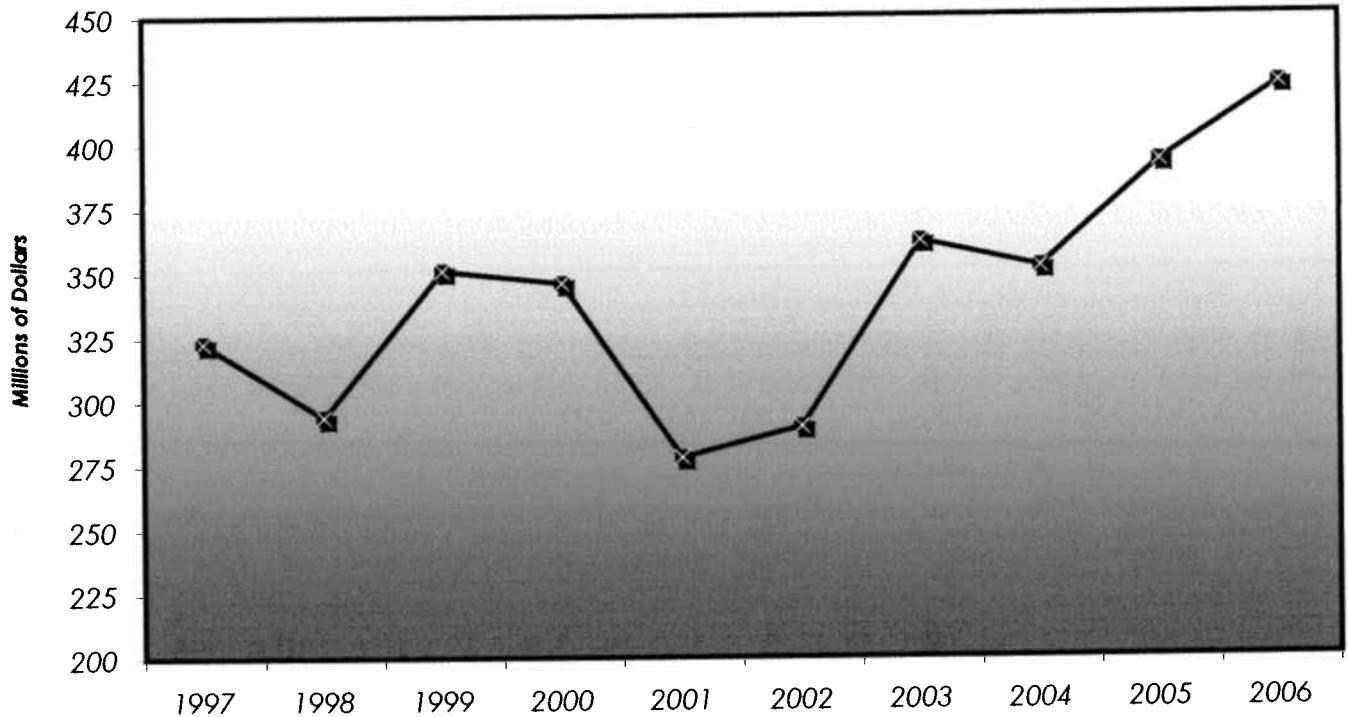
<u>CROP</u>	<u>AMOUNT</u>	<u>2007</u>	<u>2006</u>
RICE	\$188,027,000	1	1
ALMONDS ~ MEATS	122,677,000	2	2
TOMATOES ~ PROCESSING	45,634,000	3	3
WALNUTS ~ ENGLISH	15,994,000	4	4
RICE ~ SEED	12,325,000	5	7
WHEAT	9,893,000	6	15
HAY ~ ALFALFA	9,660,000	7	9
CATTLE & CALVES	9,042,000	8	5
CORN ~ GRAIN	6,163,000	9	23
POLLINATION	6,107,000	10	8



TEN YEAR COMPARISON 2007 - 1998

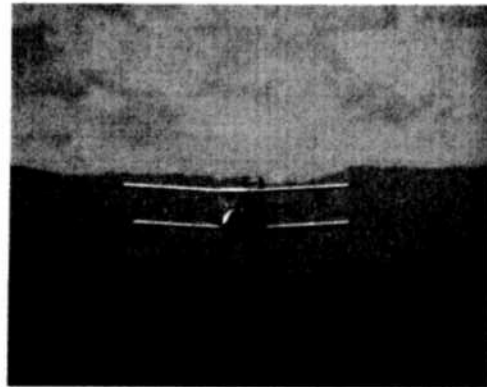
2007	GRAND TOTAL	484,525,000
2006	GRAND TOTAL	422,729,000
2005	GRAND TOTAL	392,677,000
2004	GRAND TOTAL	351,604,000
2003	GRAND TOTAL	361,573,000
2002	GRAND TOTAL	290,264,000
2001	GRAND TOTAL	277,826,000
2000	GRAND TOTAL	345,906,000
1999	GRAND TOTAL	351,278,000
1998	GRAND TOTAL	293,633,000

TEN YEAR COMPARISON

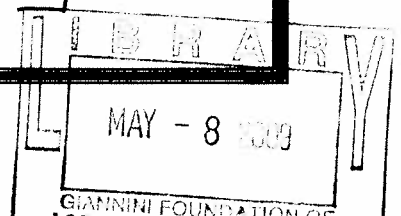


COLUSA COUNTY, Calif.
DEPARTMENT OF AGRICULTURE

2008
CROP REPORT



HARRY A. KRUG
AGRICULTURAL COMMISSIONER



COLUSA COUNTY
DEPARTMENT OF AGRICULTURE
HARRY A. KRUG
AGRICULTURAL COMMISSIONER/SEALER OF WEIGHTS AND MEASURES
100 SUNRISE BLVD., SUITE F
COLUSA, CA 95932
530-458-0580

TO: Mr. A. G. Kawamura, Secretary
California Department of Food and Agriculture
and The Honorable Board of Supervisors, Colusa County

In accordance with the provisions of Section 2279, of the California Food and Agricultural Code, I am pleased to submit the 2008 Colusa County Crop Report.

The agricultural economy in Colusa County continues to show strength. The 2008 crop year total county production value was \$662,644,000, which was another record high and far exceeds last year's value of \$484,525,000.

The county's largest crop, rice, had an increase in value from a 2007 value of \$188,027,000 to a total 2008 value of \$337,499,000. This was due to a slight increase in acres and production and a large increase in unit price from \$305 per ton to \$535 per ton. Almonds, second in county ranking, continue to increase with a 2008 value of \$132,225,000. This was a result of an increase in acreage and production, but a decrease in unit value. Processing tomatoes remained third in ranking with a slight decrease in value of \$43,993,000 compared to the 2007 value of \$45,634,000. This was a result of a decrease in acreage and a slight increase in production and unit value. Wheat moved from 6th to 5th ranking in the county with a value of \$17,646,000 compared to 2007 value of \$9,893,000. This was due to increases in acreage, production and unit value. Seed crop production increased from a total 2007 dollar value of \$30,783,000 to a 2008 value of \$47,193,000. Rice seed had the largest increase with a value of \$24,504,000 compared to \$12,325,000 due to increase in production and unit value.

I must stress that these figures show gross values only, and do not reflect a net return to the producer.

I wish to thank everyone who contributed to this report. I also express appreciation to all of my staff, especially Jon Richter, Assistant Agricultural Commissioner and Jen Sciortino, Office Assistant I, who compiled this report.

Respectfully submitted,



Harry A. Krug
Agricultural Commissioner

COLUSA COUNTY DEPARTMENT OF AGRICULTURE ANNUAL CROP REPORT 2008

2008 COUNTY BOARD OF SUPERVISORS

Thomas A. Indrieri, District 2, Chairperson

Kim Vann, District 1
Mark D. Marshall, District 3

Gary J. Evans, District 4
Denise J. Carter, District 5

OFFICE PERSONNEL

Harry A. Krug	Agricultural Commissioner
Jon Richter	Assistant Agricultural Commissioner
Mary Anne Azevedo	Agricultural Biologist and Standards Officer III
R. Scott Kittle	Agricultural Biologist and Standards Officer III
Jack de Wit	Agricultural Biologist and Standards Officer III
David Brown	Agricultural Biologist and Standards Officer III
Thomas Moss	Agricultural Biologist and Standards Officer III
Renee McCormick	Fiscal Administrative Officer
Carla Hendy	Administrative Secretary II
Lee Ann Price	Account Clerk III
Jen Sciortino	Office Assistant

APIARY

PRODUCTION AND VALUE 2008 - 2007

	YEAR	PRODUCTION	UNIT	PER UNIT	VALUE	
						TOTAL
HONEY ¹	2008	10,000	Lb.	\$1.50		\$15,000
	2007	12,000	Lb.	1.50		18,000
PACKAGE BEES ²	2008	5,500	Lb.	11.00		61,000
	2007	6,000	Lb.	10.00		60,000
POLLINATION ³	2008	65,000	Colony	110.00		7,150,000
	2007	62,000	Colony	98.50		6,107,000
QUEENS	2008	47,000	Each	15.00		705,000
	2007	39,000	Each	15.00		585,000
TOTAL	2008					\$7,931,000
	2007					6,770,000

¹ Honey produced by 16,400 colonies in 2008 and 17,100 colonies in 2007, owned by resident beekeepers.

² Includes bulk bees and nuclei.

³ Pollination colonies include all required to pollinate crops grown in Colusa County.

VEGETABLE CROPS
ACREAGE, PRODUCTION AND VALUE 2008- 2007

CROPS	ACREAGE		PRODUCTION		VALUE		TOTAL
	YEAR	HARVESTED	PER ACRE	TOTAL	UNIT	PER UNIT	
TOMATOES-PROCESSING	2008	13,940	44.2	616,148	Ton	\$71.40	\$43,993,000
	2007	16,500	43.9	724,350	Ton	63.00	45,634,000
MISCELLANEOUS	2008 ¹	135	-----	-----	-----	-----	3,360,000
	2007 ²	110	-----	-----	-----	-----	3,323,000
TOTAL	2008	14,075					\$47,353,000
	2007	16,610					48,957,000

¹ Includes beans, bell pepper, bokchoy, cucumbers, eggplant, kohlrabi, lettuce, melons, mushrooms, okra, peas, pumpkins, radish, squash, sweet corn, swiss chard, tomatoes, turnips and watermelon.

² Includes beans, bell pepper, cucumbers, melons, mushrooms, okra, peas, pumpkins, radish, squash, sweet corn, swiss chard, tomatoes, turnips and watermelon.

FRUIT AND NUT CROPS
ACREAGE, PRODUCTION AND VALUE 2008 - 2007

CROP	YEAR	ACREAGE		PRODUCTION		VALUE		TOTAL
		HARVESTED	PER ACRE	TOTAL	UNIT	PER UNIT		
ALMONDS - MEATS	2008	35,260	1.25	44,075	Ton	\$3,000.00	\$132,225,000	
	2007	30,700	1.11	34,077	Ton	3,600.00	122,677,000	
ALMONDS - HULLS	2008	-----	-----	55,080	Ton	90.00	4,957,000	
	2007	-----	-----	42,600	Ton	90.00	3,834,000	
PRUNES	2008	1,250	1.00	1,250	Ton	1,464.00	1,830,000	
	2007	1,310	0.80	1,048	Ton	1,420.00	1,488,000	
WALNUTS - ENGLISH	2008	5,100	1.75	8,925	Ton	1,200.00	10,710,000	
	2007	4,760	1.60	7,616	Ton	2,100.00	15,994,000	
MISCELLANEOUS	2008 ¹	3,530	-----	-----	-----	-----	12,460,000	
	2007 ²	3,365	-----	-----	-----	-----	13,028,000	
TOTAL	2008	45,140					\$162,182,000	
	2007	40,135					157,021,000	

¹ Includes organic almonds, apples, apricots, asian pears, black walnuts, wine grapes, olives, nectarines, peaches, pecans, persimmons, pistachios, pomegranates, pluots, plums, mandarins and strawberries.

² Includes organic almonds, apples, apricots, asian pears, black walnuts, wine grapes, olives, nectarines, peaches, pecans, persimmons, pistachios and pomegranates.

FIELD CROPS

ACREAGE, PRODUCTION AND VALUE 2008 - 2007

	YEAR	ACREAGE		PRODUCTION		VALUE	
		HARVESTED	PER ACRE	TOTAL	UNIT	PER UNIT	TOTAL
BARLEY	2008	710	1.30	923	Ton	\$200.00	\$185,000
	2007	620	1.50	930	Ton	160.00	149,000
BEANS - DRY	2008	4,390	0.90	3,951	Ton	1010.00	3,991,000
	2007	6,100	1.10	6,710	Ton	820.00	5,502,000
CORN - GRAIN	2008	2,750	6.10	16,775	Ton	170.00	2,852,000
	2007	6,420	6.00	38,520	Ton	160.00	6,163,000
COTTON - LINT	2008	0	0.00	0	500#	0.00	0
	2007	930	2.40	2,232	500#	370.00	826,000
COTTON - SEED	2008	-----	-----	-----	Ton	-----	-----
	2007	-----	-----	950	Ton	210.00	200,000
HAY - ALFALFA	2008	11,100	7.80	86,580	Ton	175.00	15,152,000
	2007	9,200	7.50	69,000	Ton	140.00	9,660,000
HAY - ALFALFA CUBE	2008	700	7.90	5,530	Ton	210.00	1,161,000
	2007	850	7.70	6,545	Ton	165.00	1,080,000
HAY - GRAIN ¹	2008	3,500	1.40	4,900	Ton	125.00	613,000
	2007	3,800	1.60	6,080	Ton	100.00	608,000
PASTURE - IRRIGATED	2008	1,000	-----	-----	Acre	160.00	160,000
	2007	950	-----	-----	Acre	150.00	142,500
PASTURE - DRYLAND	2008	190,000	-----	-----	Acre	10.00	1,900,000
	2007	190,000	-----	-----	Acre	10.00	1,900,000
PASTURE - STUBBLE ²	2008	-----	-----	-----	---	-----	-----
	2007	-----	-----	-----	---	-----	165,000
RICE ³	2008	150,200	4.20	630,840	Ton	535.00	337,499,000
	2007	148,550	4.15	616,483	Ton	305.00	188,027,000
SAFFLOWER	2008	7,750	1.00	7,750	Ton	490.00	3,798,000
	2007	7,650	1.10	8,415	Ton	360.00	3,029,000
WHEAT	2008	27,400	2.80	76,720	Ton	230.00	17,646,000
	2007	22,900	2.40	54,960	Ton	180.00	9,893,000
MISCELLANEOUS ⁴	2008	-----	-----	-----	---	-----	4,408,000
	2007	-----	-----	-----	---	-----	3,382,000
TOTAL	2008	399,500					\$389,365,000
	2007	397,040					230,726,500

¹ Includes wheat, barley, oat, sudangrass and volunteer grain hay.

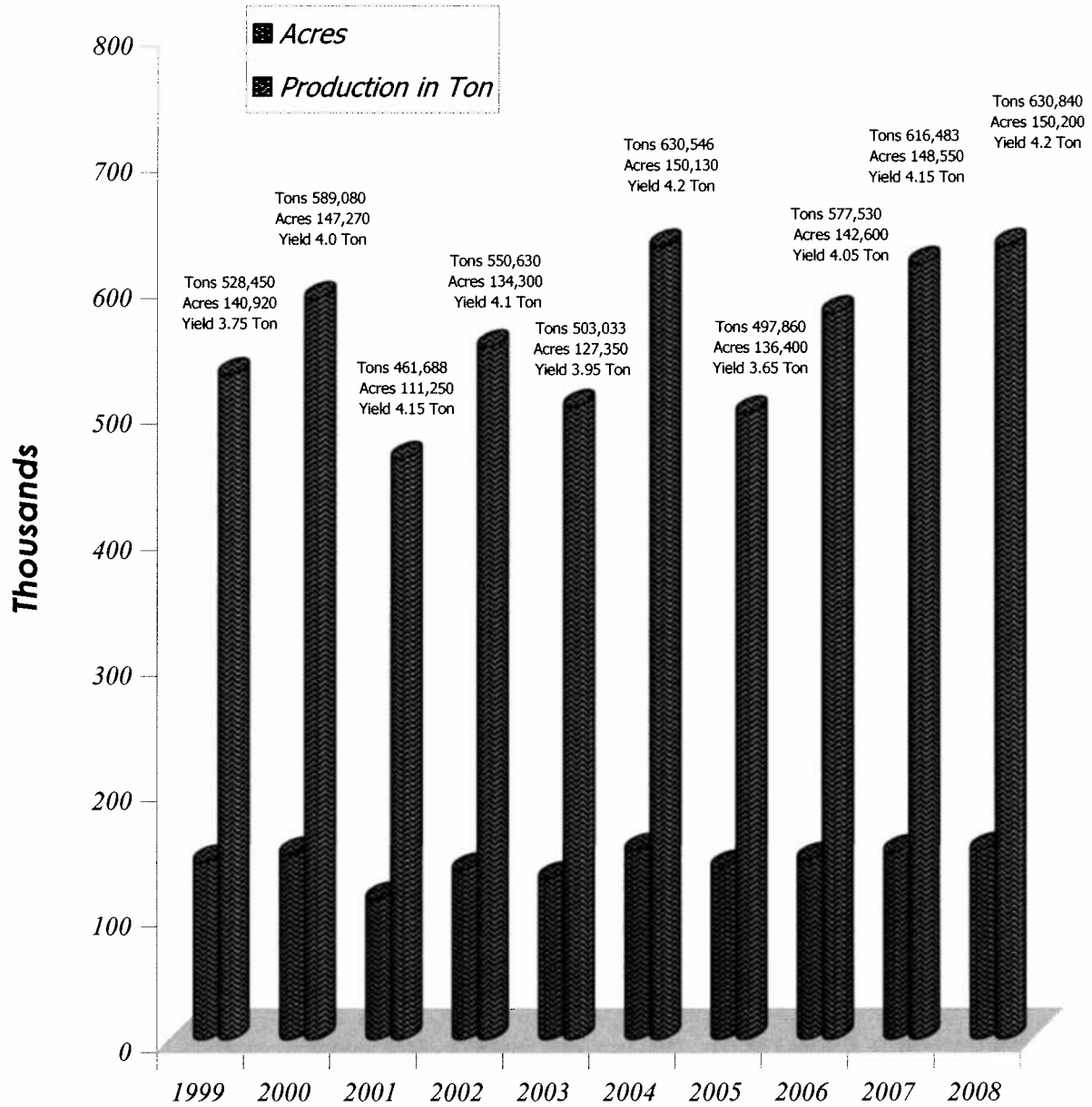
² Includes alfalfa, wheat and barley stubble.

³ Includes all Farm Service Agency payments to growers.

⁴ Includes beans, rice, wheat straw, cotton seed and lint, organic rice and sorghum grain.

RICE 1999-2008

Total Acres/Total Production



SEED CROPS

ACREAGE, PRODUCTION AND VALUE 2008 - 2007

CROP	YEAR	ACREAGE		PRODUCTION		VALUE	
		HARVESTED	PER ACRE	TOTAL	UNIT	PER UNIT	TOTAL
BEANS	2008	550	1,800	990,000	Lb.	\$0.58	\$574,000
	2007	190	1,980	376,200	Lb.	0.48	181,000
RICE ¹	2008	8,580	8,400	72,072,000	Lb.	0.34	24,504,000
	2007	8,350	8,200	68,470,000	Lb.	0.18	12,325,000
SUNFLOWERS	2008	1,780	1,320	2,349,600	Lb.	1.12	2,632,000
	2007	1,790	1,610	2,881,900	Lb.	0.95	2,738,000
WHEAT	2008	730	4,800	3,504,000	Lb.	0.12	420,000
	2007	670	4,000	2,680,000	Lb.	0.10	268,000
MISCELLANEOUS	2008 ²	1,080	-----	-----	----	-----	994,000
	2007 ³	490	-----	-----	----	-----	181,000
TOTAL	2008	12,720					\$29,124,000
	2007	11,490					15,693,000

NON-CERTIFIED SEED CROPS

CROP	YEAR	ACREAGE		PRODUCTION		VALUE	
		HARVESTED	PER ACRE	TOTAL	UNIT	PER UNIT	TOTAL
CUCUMBERS	2008	1,930	270	521,100	Lb.	\$12.25	\$6,383,000
	2007	1,550	195	302,250	Lb.	8.25	2,494,000
MELONS	2008	340	580	197,200	Lb.	3.25	641,000
	2007	240	480	115,200	Lb.	2.15	248,000
ONIONS	2008	1,130	50	56,500	Lb.	22.00	1,243,000
	2007	890	305	271,450	Lb.	20.50	5,565,000
CARROTS	2008	360	105	37,800	Lb.	17.50	662,000
	2007	280	190	53,200	Lb.	16.50	878,000
PUMPKINS	2008	290	420	121,800	Lb.	6.50	792,000
	2007	90	350	31,500	Lb.	6.70	211,000
SQUASH	2008	890	405	360,450	Lb.	7.40	2,667,000
	2007	650	340	221,000	Lb.	6.80	1,503,000
WATERMELONS	2008	2,200	260	572,000	Lb.	5.25	3,003,000
	2007	1,550	325	503,750	Lb.	3.75	1,889,000
MISCELLANEOUS ⁴	2008	1,950	-----	-----	----	-----	2,678,000
	2007	2,320	-----	-----	----	-----	2,302,000
TOTAL	2008	9,090					\$18,069,000
	2007	7,570					15,090,000

¹ Includes all Farm Service Agency payments to growers.

² Asparagus, corn, cotton, safflower, teffgrass, watermelon.

³ Asparagus, cotton, safflower, watermelon.

⁴ Beets, broccoli, brussel sprouts, burdock, cabbage, canola, cauliflower, chard, collards, gourds, herbs, kale, leeks, mustard, oats, organic carrots, herbs, flowers and spices, parsley, peas, sorghum, sudangrass, sunflowers, tomato, turnips, zinnia.

LIVESTOCK
PRODUCTION AND VALUE 2008 - 2007

ITEMS	YEAR	NUMBER OF HEAD	LIVE WEIGHT	UNIT	VALUE	
					PER UNIT	TOTAL
CATTLE AND CALVES	2008	20,400	77,520	Cwt.	\$92.90	\$7,202,000
	2007	21,440	96,500	Cwt.	93.70	9,042,000
SHEEP AND LAMBS	2008	2,200	2,420	Cwt.	91.30	221,000
	2007	2,400	2,640	Cwt.	90.50	239,000
MISCELLANEOUS ¹	2008	-----	-----	----	-----	1,175,000
	2007	-----	-----	----	-----	962,000
TOTAL	2008					\$8,598,000
	2007					10,243,000

¹ Includes chickens, chukars, goats, hogs, pheasants and quail.

LIVESTOCK PRODUCTS 2008 - 2007

ITEMS	YEAR	PRODUCTION	UNIT	VALUE	
				PER UNIT	TOTAL
MISCELLANEOUS ¹	2008	-----	-----	-----	\$22,000
	2007	-----	-----	-----	24,500
TOTAL	2008				\$22,000
	2007				24,500

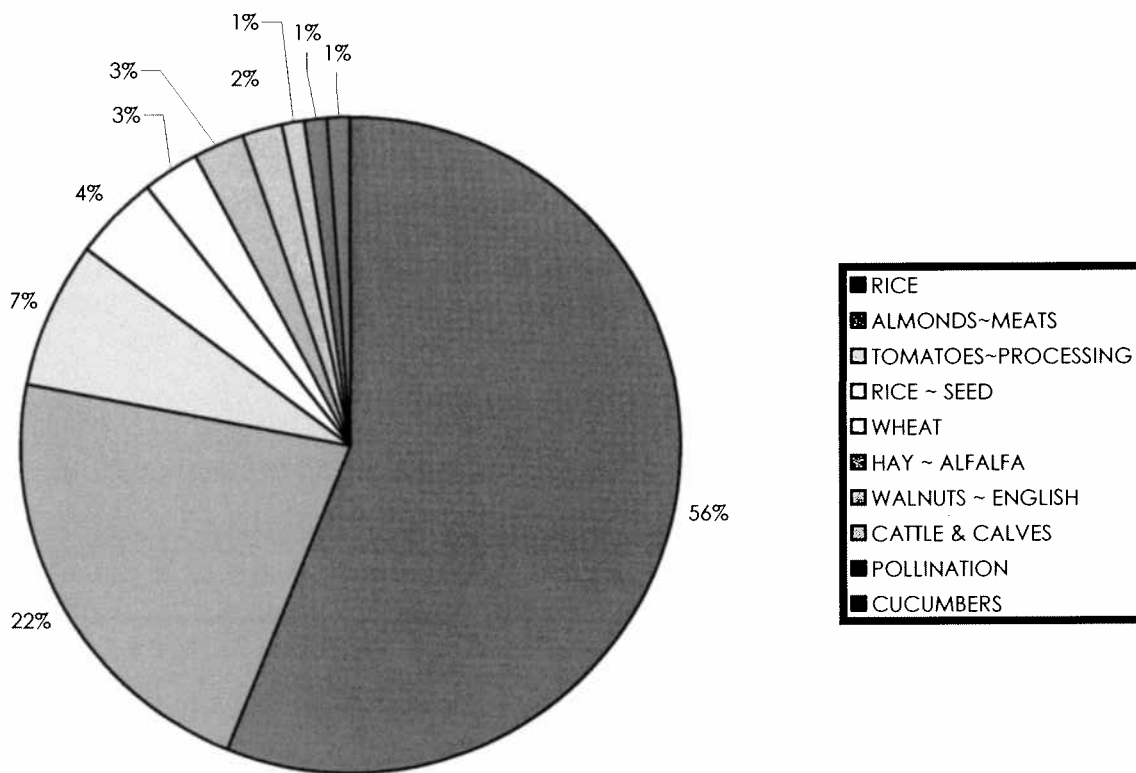
¹ Includes wool.



TEN LEADING FARM COMMODITIES

2008 - 2007

<u>CROP</u>	<u>AMOUNT</u>	<u>2008</u>	<u>2007</u>
RICE	\$337,499,000	1	1
ALMONDS ~ MEATS	132,225,000	2	2
TOMATOES ~ PROCESSING	43,993,000	3	3
RICE ~ SEED	24,504,000	4	5
WHEAT	17,646,000	5	6
HAY ~ ALFALFA	15,152,000	6	7
WALNUTS ~ ENGLISH	10,710,000	7	4
CATTLE & CALVES	7,202,000	8	8
POLLINATION	7,150,000	9	10
CUCUMBERS	6,383,000	10	16

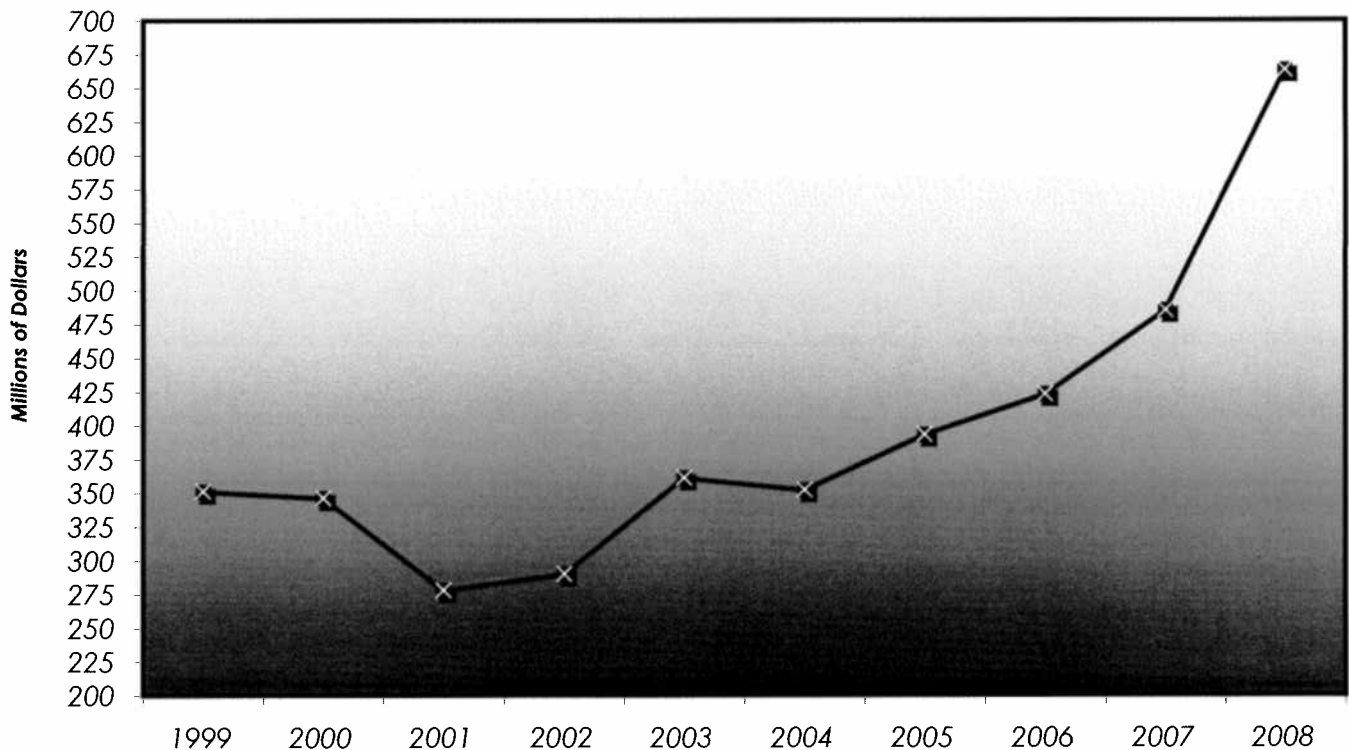


TEN YEAR COMPARISON

2008 - 1999

2008	GRAND TOTAL	662,644,000
2007	GRAND TOTAL	484,525,000
2006	GRAND TOTAL	422,729,000
2005	GRAND TOTAL	392,677,000
2004	GRAND TOTAL	351,604,000
2003	GRAND TOTAL	361,573,000
2002	GRAND TOTAL	290,264,000
2001	GRAND TOTAL	277,826,000
2000	GRAND TOTAL	345,906,000
1999	GRAND TOTAL	351,278,000

TEN YEAR COMPARISON



COLUSA COUNTY
DEPARTMENT OF AGRICULTURE
2009
CROP REPORT

COLUSA COUNTY
DEPARTMENT OF AGRICULTURE
HARRY A. KRUG
AGRICULTURAL COMMISSIONER/SEALER OF WEIGHTS AND MEASURES
100 SUNRISE BLVD., SUITE F
COLUSA, CA 95932
530-458-0580

TO: Mr. A. G. Kawamura, Secretary
California Department of Food and Agriculture
and The Honorable Board of Supervisors, Colusa County

In accordance with the provisions of Section 2279, of the California Food and Agricultural Code, I am pleased to submit the 2009 Colusa County Crop Report.

The agricultural economy in Colusa County took a slight downturn from the 2008 record year. The 2009 crop year total county production value was \$602,571,000, compared to 2008 record high value of \$662,644,000.

The county's largest crop, rice, had a decrease in value from a 2008 value of \$337,499,000 to a total 2009 value of \$243,459,000. This was due to a decrease in unit price from \$535 per ton to \$355 per ton. Almonds, second in county ranking, had a slight decrease with a 2009 value of \$128,699,000. This was a result of a decrease in almond meat production from 1.25 to 1.05 tons per acre. Processing tomatoes remained third in ranking but with a large increase in value of \$72,694,000 compared to the 2008 value of \$43,993,000. Walnuts also had an increase in value from a 2008 value of \$10,710,000 to a 2009 value of \$14,950,000. This was due to increases in acreage and unit value. Seed crop production continued to increase in total value from a total 2008 value of \$47,193,000 to a 2009 value of \$56,935,000. Onion seed had the largest increase with a value of \$5,755,000 in 2009 compared to \$1,243,000, which was due to poor pollination in 2008.

I must stress that these figures show gross values only, and do not reflect a net return to the producer.

I wish to thank everyone who contributed to this report. I also express appreciation to all of my staff, especially Jon Richter, Assistant Agricultural Commissioner and Lee Ann Price, Account Clerk, who compiled this report.

Respectfully submitted,

Harry A. Krug
Agricultural Commissioner

COLUSA COUNTY DEPARTMENT OF AGRICULTURE ANNUAL CROP REPORT 2009

2009 COUNTY BOARD OF SUPERVISORS

Gary Evans, District 4, Chairperson

Kim Dolbow Vann, District 1

Thomas A. Indrieri, District 2

Mark D. Marshall, District 3

Denise J. Carter, District 5

OFFICE PERSONNEL

Harry A. Krug

Agricultural Commissioner

Jon Richter

Assistant Agricultural Commissioner

Mary Anne Azevedo

Agricultural Biologist and Standards Officer III

R. Scott Kittle

Agricultural Biologist and Standards Officer III

Jack de Wit

Agricultural Biologist and Standards Officer III

David Brown

Agricultural Biologist and Standards Officer III

Thomas Moss

Agricultural Biologist and Standards Officer III

Renee McCormick

Fiscal Administrative Officer

Carla Hendy

Administrative Secretary II

Lee Ann Price

Account Clerk III

Jen Sciortino

Office Assistant

<h3 style="margin: 0;">APIARY PRODUCTION AND VALUE 2009 - 2008</h3>

	YEAR	PRODUCTION	UNIT	VALUE	
				PER UNIT	TOTAL
HONEY ¹	2009	14,000	Lb.	\$1.30	\$18,000
	2008	10,000	Lb.	\$1.50	15,000
PACKAGE BEES ²	2009	4,900	Lb.	12.00	59,000
	2008	5,500	Lb.	11.00	61,000
POLLINATION ³	2009	68,100	Colony	105.00	7,151,000
	2008	65,000	Colony	110.00	7,150,000
QUEENS	2009	42,000	Each	15.00	630,000
	2008	47,000	Each	15.00	705,000
TOTAL	2009				\$7,858,000
	2008				7,931,000

1 Honey produced by 15,600 colonies in 2009 and 16,400 colonies in 2008, owned by resident beekeepers.

2 Includes bulk bees and nuclei.

3 Pollination colonies include all required to pollinate crops grown in Colusa County.

VEGETABLE CROPS

ACREAGE, PRODUCTION AND VALUE 2009 - 2008

CROPS	ACREAGE		PRODUCTION		VALUE		TOTAL
	YEAR	HARVESTED	PER ACRE	TOTAL	UNIT	PER UNIT	
TOMATOES-PROCESSING	2009	18,440	48.4	892,496	Ton	\$81.45	\$72,694,000
	2008	13,940	44.2	616,148	Ton	71.40	43,993,000
MISCELLANEOUS ¹	2009	185	-----	-----	-----	-----	12,170,000
	2008	135	-----	-----	-----	-----	3,360,000
TOTAL	2009	18,625					\$84,864,000
	2008	14,075					47,353,000

¹ Includes beans, bell pepper, bokchoy, cucumbers, eggplant, kohlrabi, lettuce, melons, mushrooms, okra, peas, pumpkins, radish, squash, sweet corn, swiss chard, tomatoes, turnips and watermelon.



FRUIT AND NUT CROPS

ACREAGE, PRODUCTION AND VALUE 2009 - 2008

CROP	ACREAGE		PRODUCTION		VALUE		TOTAL
	YEAR	HARVESTED	PER ACRE	TOTAL	UNIT	PER UNIT	
ALMONDS - MEATS	2009	36,050	1.05	37,853	Ton	\$3,400.00	\$128,699,000
	2008	35,260	1.25	44,075	Ton	3,000.00	132,225,000
ALMONDS - HULLS	2009	-----	-----	47,400	Ton	80.00	3,792,000
	2008	-----	-----	55,080	Ton	90.00	4,957,000
PRUNES	2009	1,150	1.70	1,955	Ton	1,355.00	2,649,000
	2008	1,250	1.00	1,250	Ton	1,464.00	1,830,000
WALNUTS - ENGLISH	2009	6,400	1.60	10,240	Ton	1,460.00	14,950,000
	2008	5,100	1.75	8,925	Ton	1,200.00	10,710,000
MISCELLANEOUS ¹	2009	4,080	-----	-----	-----	-----	18,547,000
	2008	3,530	-----	-----	-----	-----	12,460,000
TOTAL	2009	47,680					\$168,637,000
	2008	45,140					162,182,000

¹ Includes organic almonds, apples, apricots, asian pears, black walnuts, wine grapes, olives, mandarins, nectarines, peaches, pecans, persimmons, pistachios, pluots, plums, pomegranates and strawberries.

FIELD CROPS

ACREAGE, PRODUCTION AND VALUE 2009 - 2008

	YEAR	ACREAGE		PRODUCTION		VALUE	
		HARVESTED	PER ACRE	TOTAL	UNIT	PER UNIT	TOTAL
BARLEY	2009	160	1.20	192	Ton	\$160.00	\$31,000
	2008	710	1.30	923	Ton	200.00	185,000
BEANS - DRY	2009	4,620	1.05	4,851	Ton	840.00	4,075,000
	2008	4,390	0.90	3,951	Ton	1010.00	3,991,000
CORN - GRAIN	2009	650	5.80	3,770	Ton	205.00	773,000
	2008	2,750	6.10	16,775	Ton	170.00	2,852,000
HAY - ALFALFA	2009	11,400	7.50	85,500	Ton	98.00	8,379,000
	2008	11,100	7.80	86,580	Ton	175.00	15,152,000
HAY - ALFALFA CUBE	2009	900	7.60	6,840	Ton	98.00	670,000
	2008	700	7.90	5,530	Ton	210.00	1,161,000
HAY - GRAIN ¹	2009	2,200	1.10	2,420	Ton	50.00	121,000
	2008	3,500	1.40	4,900	Ton	125.00	613,000
PASTURE - IRRIGATED	2009	900	-----	-----	Acre	150.00	135,000
	2008	1,000	-----	-----	Acre	160.00	160,000
PASTURE - DRYLAND	2009	180,000	-----	-----	Acre	10.00	1,800,000
	2008	190,000	-----	-----	Acre	10.00	1,900,000
RICE ²	2009	152,400	4.50	685,800	Ton	355.00	243,459,000
	2008	150,200	4.20	630,840	Ton	535.00	337,499,000
SAFFLOWER	2009	3,630	1.10	3,993	Ton	300.00	1,198,000
	2008	7,750	1.00	7,750	Ton	490.00	3,798,000
WHEAT	2009	20,450	2.65	54,193	Ton	182.00	9,863,000
	2008	27,400	2.80	76,720	Ton	230.00	17,646,000
MISCELLANEOUS	2009 ³	-----	-----	-----	----	-----	5,838,000
	2008 ⁴	-----	-----	-----	----	-----	4,408,000
TOTAL	2009	377,310					\$276,342,000
	2008	399,500					389,365,000



¹ Includes wheat, barley, oat, sudangrass and volunteer grain hay.

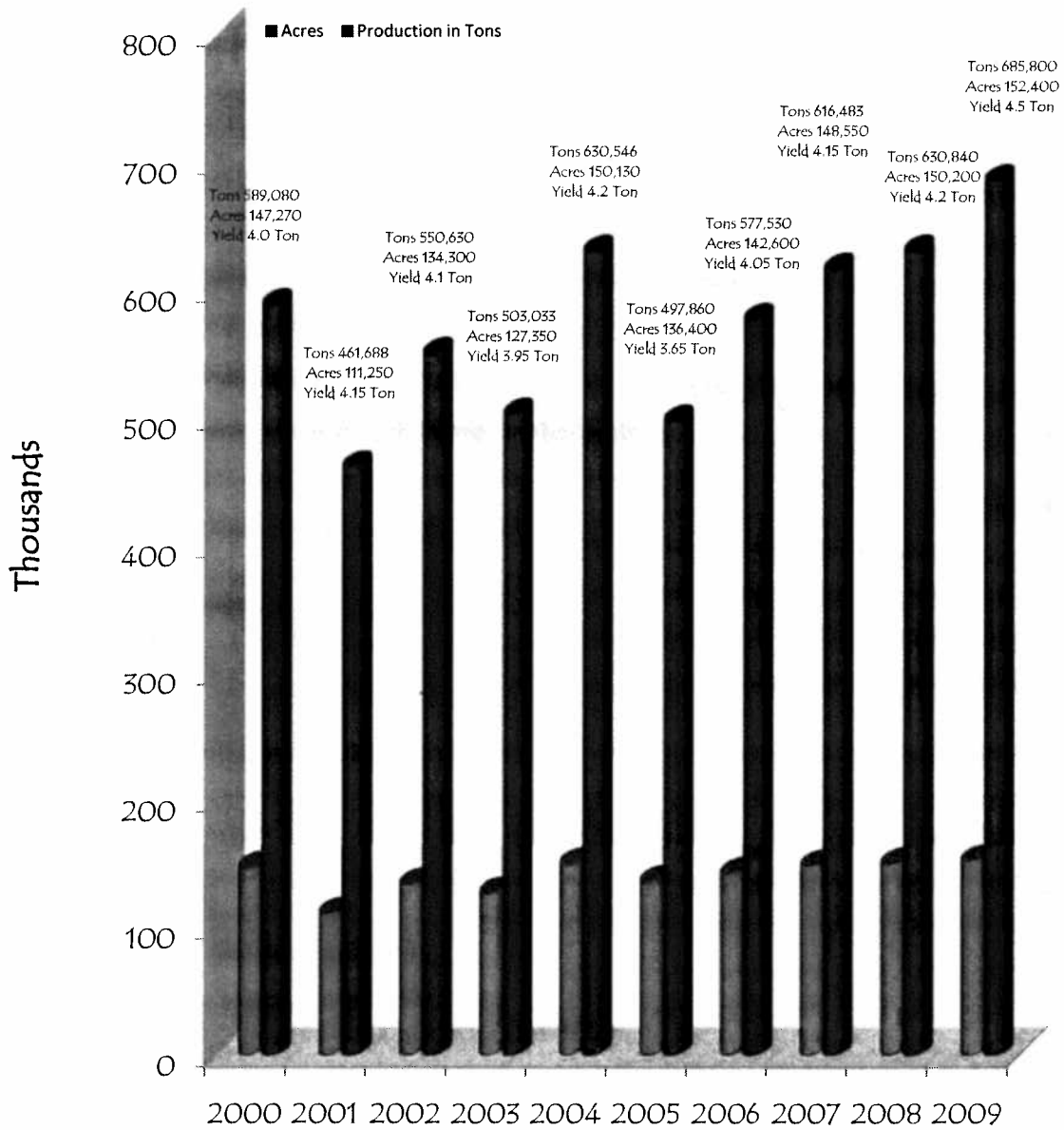
² Includes all Farm Service Agency payments to growers.

³ Includes alfalfa stubble, rice & wheat straw, organic beans, organic rice, sorghum grain, triticale and wild rice.

⁴ Includes beans, rice, wheat straw, cotton seed and lint, organic rice and sorghum grain.

RICE 2000-2009

Total Acres/Total Production



SEED CROPS
ACREAGE, PRODUCTION AND VALUE 2009 - 2008

CROP	YEAR	ACREAGE		PRODUCTION		VALUE	
		HARVESTED	PER ACRE	TOTAL	UNIT	PER UNIT	TOTAL
BEANS	2009	440	2,100	924,000	Lb.	\$0.52	\$480,000
	2008	550	1,800	990,000	Lb.	0.58	574,000
RICE ¹	2009	10,700	8,800	94,160,000	Lb.	0.26	24,482,000
	2008	8,580	8,400	72,072,000	Lb.	0.34	24,504,000
SUNFLOWERS	2009	3,850	1,400	5,390,000	Lb.	0.97	5,228,000
	2008	1,780	1,320	2,349,600	Lb.	1.12	2,632,000
WHEAT	2009	360	5,000	1,800,000	Lb.	0.10	180,000
	2008	730	4,800	3,504,000	Lb.	0.12	420,000
MISCELLANEOUS	2009 ²	140	-----	-----	-----	-----	226,000
	2008 ³	1,080	-----	-----	-----	-----	994,000
TOTAL	2008	15,490					\$30,596,000
	2007	12,720					29,124,000

NON-CERTIFIED SEED CROPS

CROP	YEAR	ACREAGE		PRODUCTION		VALUE	
		HARVESTED	PER ACRE	TOTAL	UNIT	PER UNIT	TOTAL
CUCUMBERS	2009	3,180	125	397,500	Lb.	\$14.90	\$5,923,000
	2008	1,930	270	521,100	Lb.	12.25	6,383,000
MELONS	2009	300	495	148,500	Lb.	3.85	572,000
	2008	340	580	197,200	Lb.	3.25	641,000
ONIONS	2009	380	650	247,000	Lb.	23.30	5,755,000
	2008	1,130	50	56,500	Lb.	22.00	1,243,000
CARROTS	2009	320	420	134,400	Lb.	13.85	1,861,000
	2008	360	105	37,800	Lb.	17.50	662,000
PUMPKINS	2009	130	670	87,100	Lb.	4.90	427,000
	2008	290	420	121,800	Lb.	6.50	792,000
SQUASH	2009	850	390	331,500	Lb.	7.65	2,536,000
	2008	890	405	360,450	Lb.	7.40	2,667,000
WATERMELONS	2009	1,800	268	482,400	Lb.	6.60	3,184,000
	2008	2,200	260	572,000	Lb.	5.25	3,003,000
MISCELLANEOUS	2009 ⁴	1,040	-----	-----	-----	-----	2,315,000
	2008 ⁵	1,950	-----	-----	-----	-----	2,678,000
TOTAL	2009	8,000					\$22,573,000
	2008	9,090					18,069,000

¹ Includes all Farm Service Agency payments to growers.

² Asparagus, corn, safflower, watermelon.

³ Asparagus, corn, safflower, teffgrass, watermelon.

⁴ Beets, broccoli, brussels sprouts, burdock, cabbage, canola, cauliflower, celery, chard, collards, eggplant, gourds, herbs, kale, leeks, mustard, oats, organic carrots, herbs, flowers and spices, okra, parsley, peas, sorghum, sudangrass, sunflowers, tomato, turnips, zinnia.

⁵ Beets, broccoli, brussel sprouts, burdock, cabbage, canola, cauliflower, chard, collards, gourds, herbs, kale, leeks, mustard, oats, organic carrots, herbs, flowers and spices, parsley, peas, sorghum, sudangrass, sunflowers, tomato,



turnips, zinnia.



LIVESTOCK PRODUCTION AND VALUE 2009 - 2008

ITEMS	YEAR	NUMBER OF HEAD	LIVE WEIGHT	UNIT	VALUE	
					PER UNIT	TOTAL
CATTLE AND CALVES	2009	19,300	71,410	Cwt.	\$94.10	\$6,720,000
	2008	20,400	77,520	Cwt.	92.90	7,202,000
SHEEP AND LAMBS	2009	2,100	2,310	Cwt.	88.40	204,000
	2008	2,200	2,420	Cwt.	91.30	221,000
MISCELLANEOUS ¹	2009	-----	-----	----	-----	992,000
	2008	-----	-----	----	-----	1,175,000
TOTAL	2009					\$7,916,000
	2008					8,598,000

¹ Includes chickens, chukars, goats, hogs, pheasants and quail.



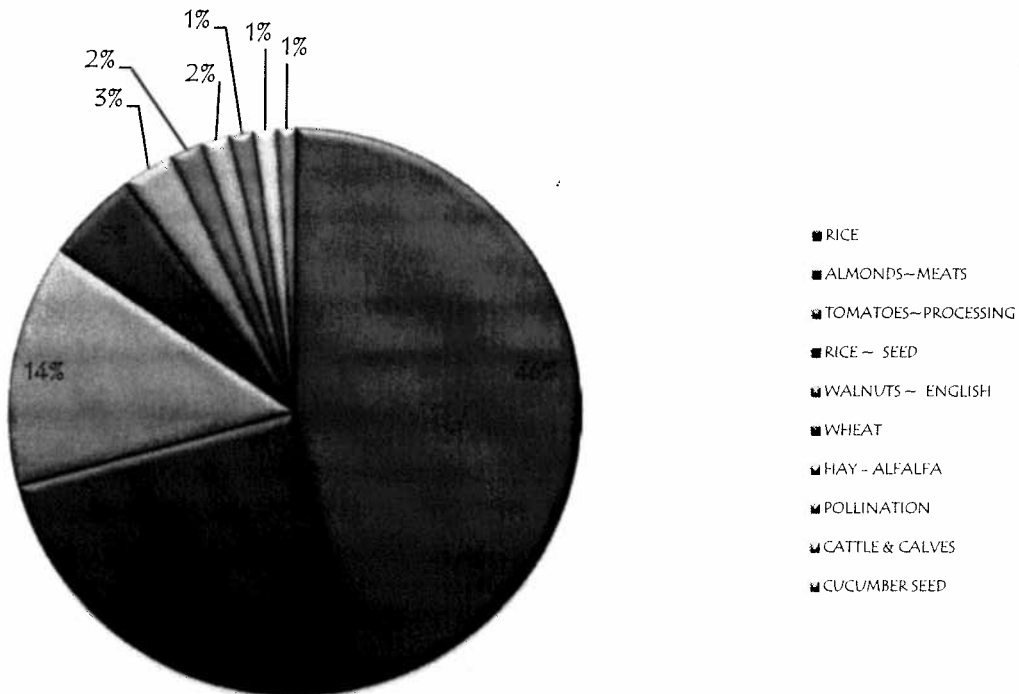
LIVESTOCK PRODUCTS 2009 - 2008

ITEMS	YEAR	PRODUCTION	UNIT	VALUE	
				PER UNIT	TOTAL
MISCELLANEOUS ¹	2009	-----	-----	-----	\$19,000
	2008	-----	-----	-----	22,000
TOTAL	2009				\$19,000
	2008				22,000

¹ Includes wool.

TEN LEADING FARM COMMODITIES 2009 - 2008

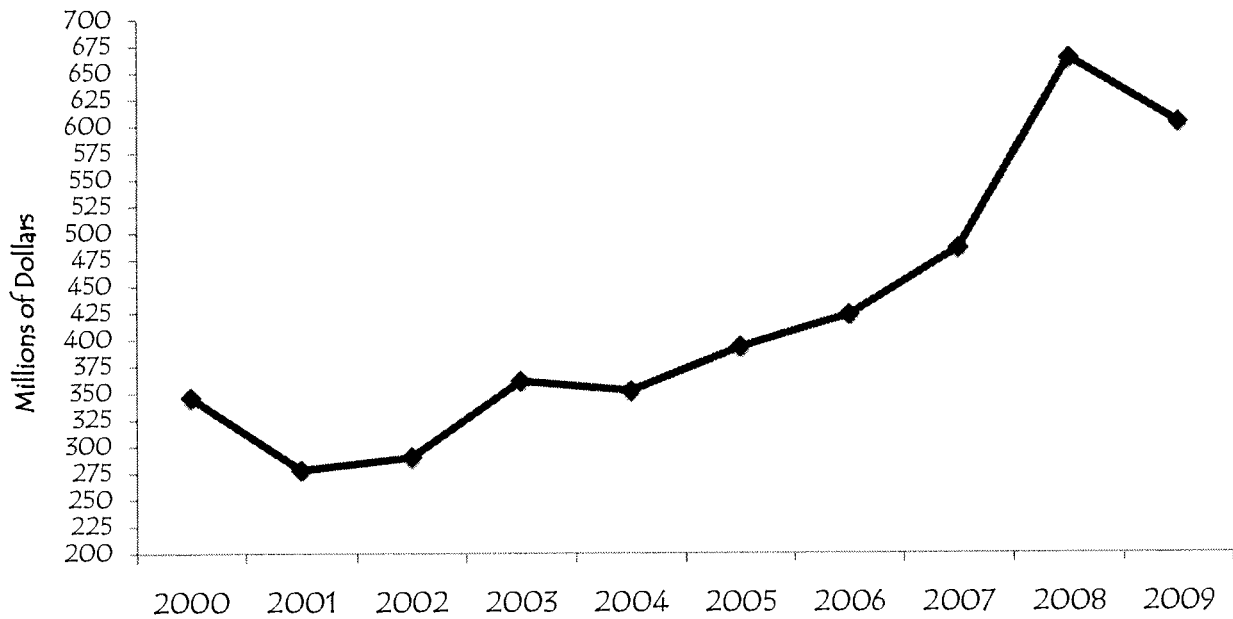
<u>CROP</u>	<u>AMOUNT</u>	<u>2009</u>	<u>2008</u>
RICE	\$243,459,000	1	1
ALMONDS ~ MEATS	128,699,000	2	2
TOMATOES ~ PROCESSING	72,694,000	3	3
RICE ~ SEED	28,248,000	4	4
WALNUTS ~ ENGLISH	14,950,000	5	7
WHEAT	9,863,000	6	5
HAY - ALFALFA	8,379,000	7	6
POLLINATION	7,151,000	8	9
CATTLE & CALVES	6,720,000	9	8
CUCUMBER SEED	5,923,000	10	10



TEN YEAR COMPARISON 2009 - 2000

2009	GRAND TOTAL	598,805,000
2008	GRAND TOTAL	662,644,000
2007	GRAND TOTAL	484,525,000
2006	GRAND TOTAL	422,729,000
2005	GRAND TOTAL	392,677,000
2004	GRAND TOTAL	351,604,000
2003	GRAND TOTAL	361,573,000
2002	GRAND TOTAL	290,264,000
2001	GRAND TOTAL	277,826,000
2000	GRAND TOTAL	345,906,000

TEN YEAR COMPARISON





Colusa County Commodities and Their Destinations

Colusa County exports these vegetable and flower seeds overseas:

Asparagus	Coriander	Parsley
Basil	Corn	Peas
Bean	Cucumber	Pepper
Broccoli	Dill	Pumpkin
Cabbage	Gourd	Radish
Calendula	Kale	Squash
Cantaloupe	Lettuce	Sunflower
Carrot	Melon	Tomato
Cauliflower	Mustard	Turnip
Chicory	Onion	Watermelon

Food crops that are exported overseas include:



	Almonds	Plums	Rice
Beans	Prunes	Wild Rice	



Importing countries that purchase commodities produced in Colusa County:

Argentina	Guatemala	Panama
Australia	Hong Kong	Papua New Guinea
Austria	Iceland	People's Republic of China
Bahrain	India	Peru
Belgium	Indonesia	Philippines
Belize	Israel	Poland
Brazil	Italy	Portugal
Canada	Jamaica	Republic of Korea
Canary Islands	Japan	Russian Federation
Chile	Jordan	Saipan
China	Kenya	Saudi Arabia
Colombia	Kuwait	Singapore
Cyprus	Lebanon	South Africa
Denmark	Lithuania	Spain
Dominican Republic	Malaysia	Sweden
Ecuador	Martinique	Switzerland
El Salvador	Mexico	Taiwan
Egypt	Micronesia	Tahiti
Finland	Netherlands	Thailand
France	New Caledonia	Trinidad & Tobago
Germany	New Zealand	Turkey
Ghana	Nicaragua	United Arab Emirates
Greece	Norway	United Kingdom
Guam	Pakistan	Venezuela

