



AgEcon SEARCH
RESEARCH IN AGRICULTURAL & APPLIED ECONOMICS

The World's Largest Open Access Agricultural & Applied Economics Digital Library

This document is discoverable and free to researchers across the globe due to the work of AgEcon Search.

Help ensure our sustainability.

Give to AgEcon Search

AgEcon Search

<http://ageconsearch.umn.edu>

aesearch@umn.edu

*Papers downloaded from **AgEcon Search** may be used for non-commercial purposes and personal study only. No other use, including posting to another Internet site, is permitted without permission from the copyright owner (not AgEcon Search), or as allowed under the provisions of Fair Use, U.S. Copyright Act, Title 17 U.S.C.*



**Overview of Economic Trends in South Carolina's
Council of Governments Regions,
2000-2005**

by

Daniel Eades
Research Associate
E.D.A. University Center for Economic Development
Clemson University, Clemson, South Carolina
www.clemson.edu/uced

UCED is a University Center Program of
The U.S. Department of Commerce
Economic Development Administration (E.D.A.)



Map of South Carolina
Council of Government
Regions

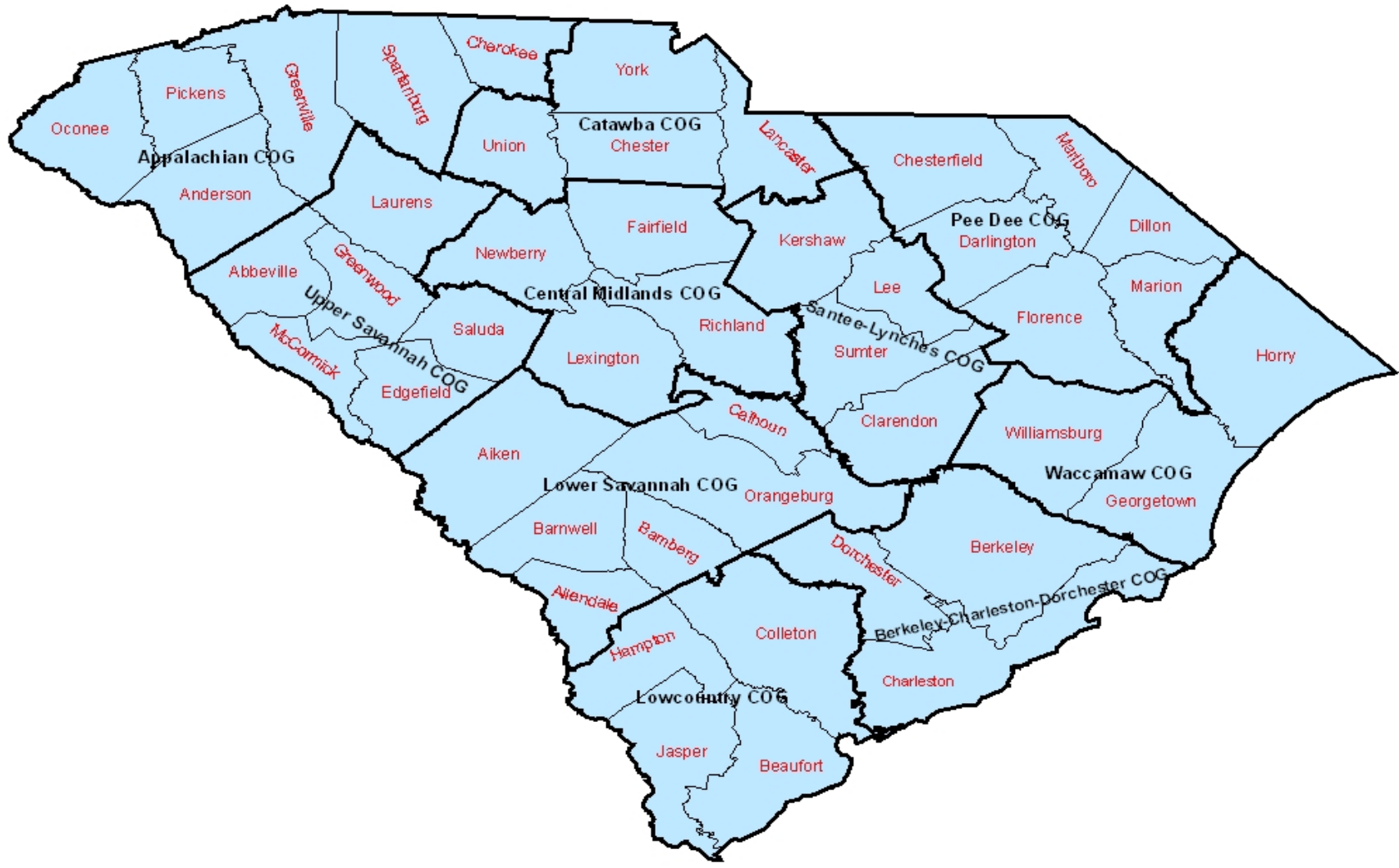
Establishments,
Employment, and
Unemployment Trends for
COGs, 2000-2005

Earnings Per Worker, Per
Capita Income, and
Median Household Income
Trends for COGs,
2000-2004

Patents, Small Business
Innovation Research
(SBIR), and Small
Business Technology
Transfers (SBTT) for
COGs, 2000-2005

County Level Data for
Economic Trends,
2000-2005

SOUTH CAROLINA COUNCIL OF GOVERNMENT REGIONS



A. Overview of Economic Trends in South Carolina's Councils of Governments Regions (COGs): Establishments and Employment, 2000-2005

From 2000 to 2004 the number of private establishments in South Carolina grew from 97,146 to 101,038, an increase of 4.0% (Table A.1). The state growth rate was slightly slower than the national growth rate of 4.5%. Growth in establishments was led by the Berkeley-Charleston-Dorchester (9.8%), Waccamaw (9.3%), and Lowcountry (7.6%) COGs. Additionally, the state and six of the ten COGs reported gains in establishments greater than the national rate of 1.8% for the period of 2003-2004 (Table A.1).

Trends in employment closely followed those exhibited by establishments. Both the nation and South Carolina experienced positive 2000-2005 employment growth of 3.5% and 1.9% respectively (Table A.2). Again, growth in the state was led by the Berkeley-Charleston-Dorchester (8.8%), Lowcountry (13.7%) and Waccamaw (12.6%) regions. The 2004 and 2005 period was a time of stronger employment growth. Nine of the ten COGs had positive growth and eight of the ten COGs outperformed the U.S. employment growth rate of 1.8%.

While the total number of individuals employed increased, employment in the manufacturing sector fell across all geographic areas. Between 2000 and 2005 the state reported a loss of nearly 82,500 manufacturing jobs, a decrease of 24% (Table A.3). National employment in manufacturing fell by 17.6% during the same period. The Appalachian COG, which contains the state's largest share of manufacturing employment, lost nearly 35,000 manufacturing jobs, 26.4% of the region's total, between 2000 and 2005. Other COG regions experiencing large percentage declines in manufacturing employment were Waccamaw (-38.1%), Upper Savannah (-29.5%), Santee-Lynches (-25.7%) and Pee Dee (-25%). Manufacturing job losses continued in the state between 2004 and 2005. However, four COGs (Berkeley-Charleston-Dorchester, Catawba, Central Midlands, and Lowcountry) reported small increases in manufacturing employment during this period.

Heavy losses in manufacturing jobs are a principal cause of the increase in the number of unemployed in South Carolina over the last five years. Between 2000 and 2005 the total number of unemployed persons in the state increased 100% from 70,820 to 141,780 (Table A.4). This is a dramatic increase in unemployed residents compared to the national increase of 33% over the same period. The Appalachian (124.6%), Catawba (119.4%), Santee-Lynches (102.2%), and Upper Savannah (110.6%) COGs all reported percentage increases in unemployed greater than the state. Only two COGs, Waccamaw (-1.3%) and Catawba (-5.6%), reported a decline in the number of unemployed from 2004 to 2005. No COGs were able to achieve the 6.8% decline in the unemployed observed nationally between 2004 and 2005.

South Carolina's unemployment rate, although lower than the U.S average in 2000, rose from 3.6% to 6.8% over the period 2000-2005 (Table A.5). The state rate held constant in 2004 and 2005 at 6.8%, but this rate remained above the national average of 5.1%. In 2005, unemployment rates were above the state average in Pee Dee (9.8%), Santee-Lynches (8.3%), Upper Savannah (7.9%), Catawba (7.6%), and Lower Savannah (7.6%) COG regions. COGs with the lowest unemployment rates included Berkeley-Charleston-Dorchester (5.4%), Central Midlands (5.7%), and Lowcountry (5.3%). Four regional councils (Appalachian, Catawba, Lowcountry, and Waccamaw) experienced decreases in their unemployment rates between 2004 and 2005. No COG regions reported unemployment rates below the national unemployment rate of 5.1% in 2005.

A. Establishments and Employment

Geographic Area	Year						Percent Change	
	A.1 Private Establishments							
	2000	2001	2002	2003	2004	2005	2000-2004	2003-2004
Appalachian COG	26344	26114	26401	26434	26916	--	2.2%	1.8%
B-C-D COG	14070	14198	14660	14952	15442	--	9.8%	3.3%
Catawba COG	6093	6084	6186	6264	6279	--	3.1%	0.2%
Central Midlands COG	15213	15251	15326	15480	15752	--	3.5%	1.8%
Lowcountry COG	5981	6068	6184	6301	6437	--	7.6%	2.2%
Lower Savannah COG	5611	5593	5606	5564	5632	--	0.4%	1.2%
Pee Dee COG	6894	6845	6900	6844	6838	--	-0.8%	-0.1%
Santee-Lynches COG	3824	3809	3833	3826	3906	--	2.1%	2.1%
Upper Savannah COG	3566	3458	3447	3453	3432	--	-3.8%	-0.6%
Waccamaw COG	9519	9573	9787	9973	10404	--	9.3%	4.3%
South Carolina	97146	96993	98330	99091	101038	--	4.0%	2.0%
U.S.	7070048	7095302	7200770	7254745	7387724	--	4.5%	1.8%

Source: U.S. Census Bureau, County Business Patterns. Available at: <http://www.census.gov/epcd/cbp/view/cbpview.html>

A. Establishments and Employment

Geographic Area	Year						Percent Change	
	A.2 Employment							
	2000	2001	2002	2003	2004	2005	2000-2005	2004-2005
Appalachian COG	520,210	501,300	490,100	491,520	497,170	499,700	-3.9%	0.5%
B-C-D COG	257,180	249,330	255,130	264,170	273,380	279,880	8.8%	2.4%
Catawba COG	143,330	140,400	139,120	139,190	140,650	144,490	0.8%	2.7%
Central Midlands COG	297,440	290,820	291,680	297,380	303,270	309,810	4.2%	2.2%
Lowcountry COG	82,160	80,180	82,780	85,050	87,900	93,440	13.7%	6.3%
Lower Savannah COG	130,410	126,250	126,770	128,480	130,000	133,060	2.0%	2.4%
Pee Dee COG	144,460	138,330	137,800	137,870	137,940	137,560	-4.8%	-0.3%
Santee-Lynches COG	88,890	85,180	84,360	86,820	87,950	89,550	0.7%	1.8%
Upper Savannah COG	98,990	95,230	92,120	92,220	93,030	94,850	-4.2%	2.0%
Waccamaw COG	138,960	135,260	137,950	143,960	148,550	156,400	12.6%	5.3%
South Carolina	1,902,030	1,842,290	1,837,770	1,866,680	1,899,810	1,938,740	1.9%	2.0%
U.S.	136,891,000	136,933,000	136,485,000	137,736,000	139,252,000	141,730,000	3.5%	1.8%

Source: South Carolina Employment Security Commission: Labor Force and Employment. Available at: <http://www.sces.org/LMI/data/labor-force/lf.asp>

A.3 Manufacturing Employment

	2000	2001	2002	2003	2004	2005	2000-2005	2004-2005
Appalachian COG	131,630	125,636	108,607	103,681	99,418	96,861	-26.4%	-2.6%
B-C-D COG	22,701	22,458	20,830	20,439	20,817	21,086	-7.1%	1.3%
Catawba COG	27,699	25,880	23,388	21,667	20,842	21,116	-23.8%	1.3%
Central Midlands COG	34,694	33,283	30,456	28,869	28,223	28,328	-18.3%	0.4%
Lowcountry COG	4,907	4,557	4,014	3,853	3,945	4,002	-18.4%	1.4%
Lower Savannah COG	26,188	24,721	22,623	21,808	21,655	21,247	-18.9%	-1.9%
Pee Dee COG	36,625	34,104	31,745	29,885	28,832	27,467	-25.0%	-4.7%
Santee-Lynches COG	19,868	18,174	16,547	16,492	15,781	14,768	-25.7%	-6.4%
Upper Savannah COG	25,387	23,865	20,591	18,498	18,293	17,908	-29.5%	-2.1%
Waccamaw COG	13,728	12,160	9,865	8,777	8,640	8,497	-38.1%	-1.7%
South Carolina	345,152	326,608	290,127	275,573	267,511	262,708	-23.9%	-1.8%
U.S.	17,263,000	16,441,000	15,259,000	14,510,000	14,315,100	14,232,000	-17.6%	-0.6%

Source: Bureau of Economic Analysis, Regional Economic Information System (REIS): TableCA25 Available at: <http://www.bea.gov/bea/regional/reis/>

A. Establishments and Employment

Geographic Area	Year	Percent Change
-----------------	------	----------------

A.4 Unemployment

	2000	2001	2002	2003	2004	2005	2000-2005	2004-2005
Appalachian COG	16,280	25,180	30,850	34,440	36,460	36,570	124.6%	0.3%
B-C-D COG	8,410	10,910	12,180	14,670	15,460	16,070	91.1%	3.9%
Catawba COG	5,420	8,370	10,830	12,680	12,600	11,890	119.4%	-5.6%
Central Midlands COG	9,600	12,730	14,410	17,170	18,290	18,730	95.1%	2.4%
Lowcountry COG	2,850	3,650	4,210	5,060	5,260	5,270	84.9%	0.2%
Lower Savannah COG	6,200	8,530	8,950	9,940	10,180	10,880	75.5%	6.9%
Pee Dee COG	7,960	10,710	11,430	14,030	14,570	15,030	88.8%	3.2%
Santee-Lynches COG	4,030	5,730	6,370	7,000	7,280	8,150	102.2%	12.0%
Upper Savannah COG	3,870	6,530	7,760	8,060	7,960	8,150	110.6%	2.4%
Waccamaw COG	6,230	8,480	9,200	10,890	11,200	11,050	77.4%	-1.3%
South Carolina	70,820	100,810	116,190	133,910	139,220	141,780	100.20%	1.8%
U.S.	5,692,000	6,801,000	8,378,000	8,774,000	8,149,000	7,591,000	33.4%	-6.8%

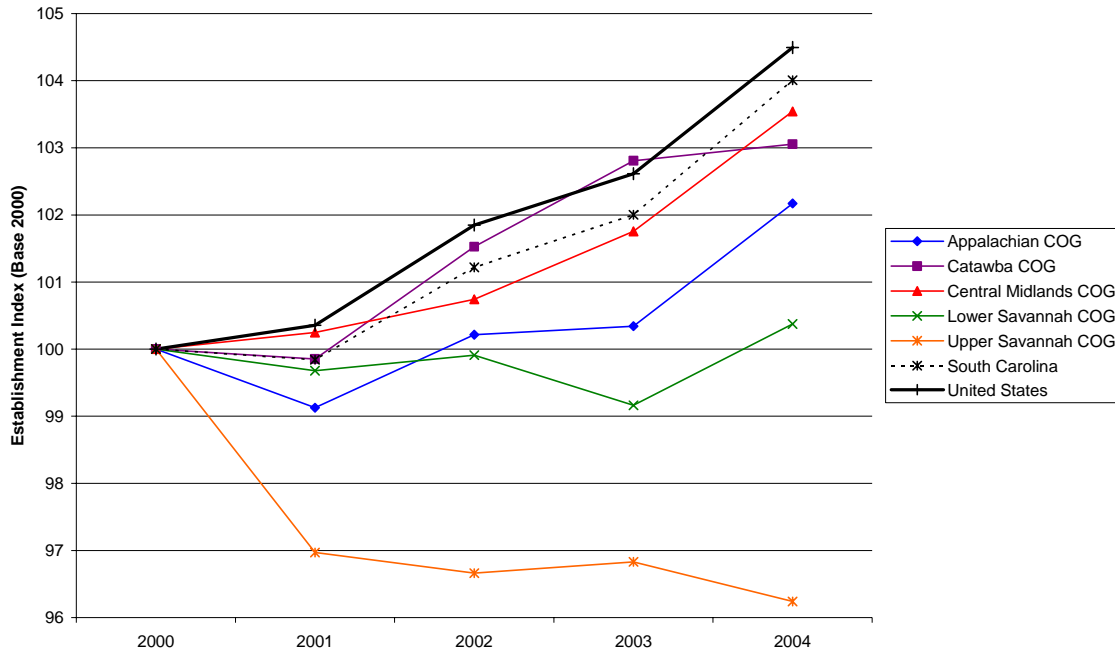
Source: South Carolina Employment Security Commission: Labor Force and Employment. Available at: <http://www.sces.org/LMI/data/labor-force/lf.asp>

A.5 Unemployment Rate

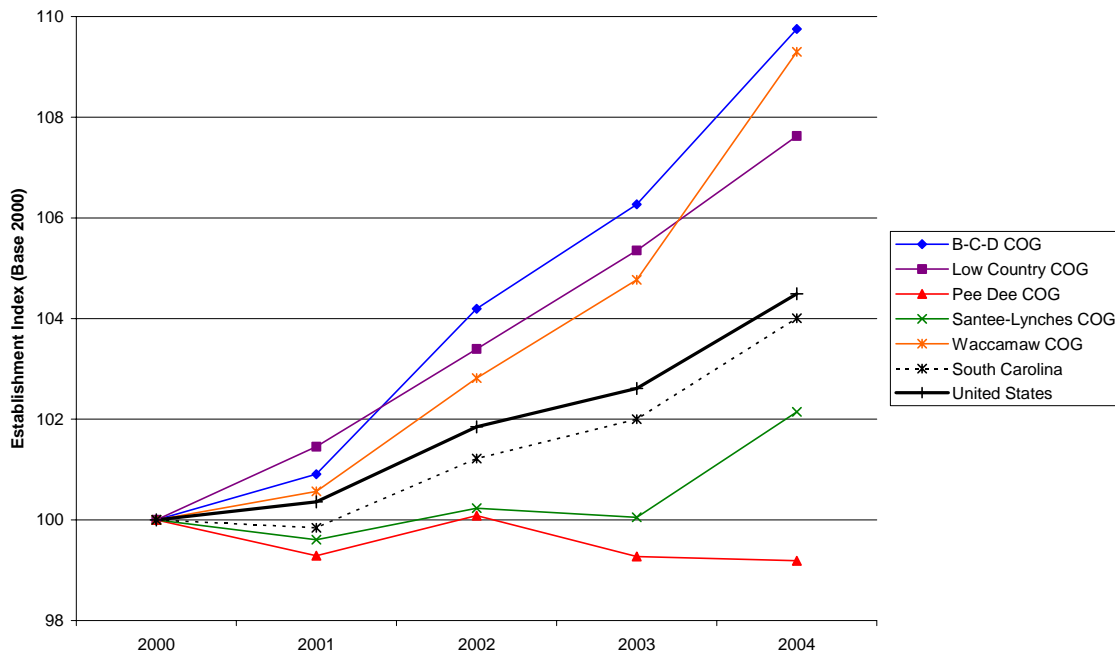
	2000	2001	2002	2003	2004	2005	2000-2005	2004-2005
Appalachian COG	3.0%	4.8%	5.9%	6.5%	6.8%	6.8%	124.7%	-0.2%
B-C-D COG	3.2%	4.2%	4.6%	5.3%	5.4%	5.4%	71.5%	1.4%
Catawba COG	3.6%	5.6%	7.2%	8.3%	8.2%	7.6%	108.7%	-7.5%
Central Midlands COG	3.1%	4.2%	4.7%	5.5%	5.7%	5.7%	82.3%	0.2%
Lowcountry COG	3.4%	4.4%	4.8%	5.6%	5.6%	5.3%	59.2%	-5.4%
Lower Savannah COG	4.5%	6.3%	6.6%	7.2%	7.3%	7.6%	66.5%	4.1%
Pee Dee COG	5.2%	7.2%	7.7%	9.2%	9.6%	9.8%	88.6%	3.1%
Santee-Lynches COG	4.3%	6.3%	7.0%	7.5%	7.6%	8.3%	92.3%	9.1%
Upper Savannah COG	3.8%	6.4%	7.8%	8.0%	7.9%	7.9%	110.3%	0.4%
Waccamaw COG	4.3%	5.9%	6.3%	7.0%	7.0%	6.6%	53.8%	-5.9%
South Carolina	3.6%	5.2%	5.9%	6.7%	6.8%	6.8%	88.9%	0.0%
U.S.	4.0%	4.7%	5.8%	6.0%	5.5%	5.1%	27.5%	-7.3%

Source: South Carolina Employment Security Commission: Labor Force and Employment. Available at: <http://www.sces.org/LMI/data/labor-force/lf.asp>

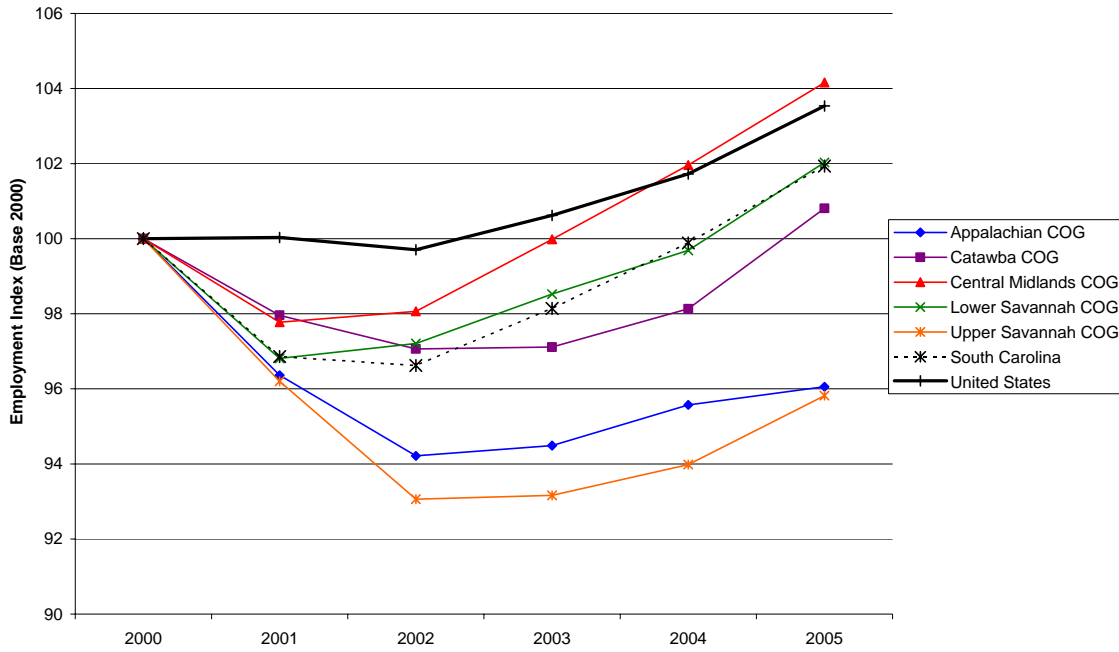
Private Establishment Trends: Regional Councils of Governments, South Carolina, and United States, 2000-2004



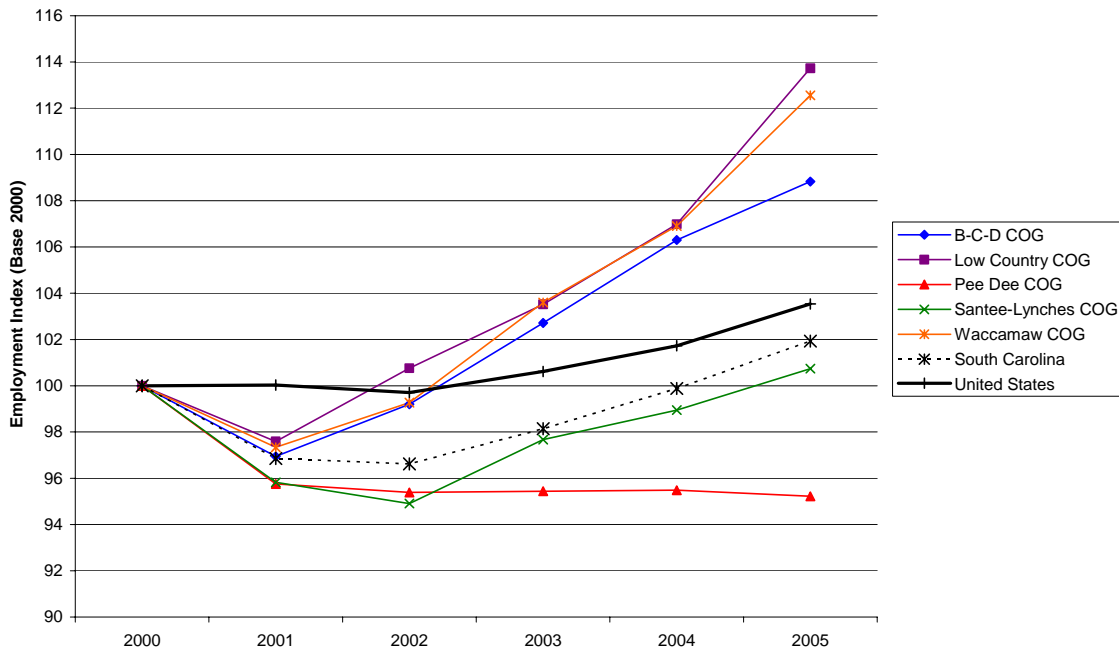
Private Establishment Trends: Regional Councils of Governments, South Carolina, and United States, 2000-2004



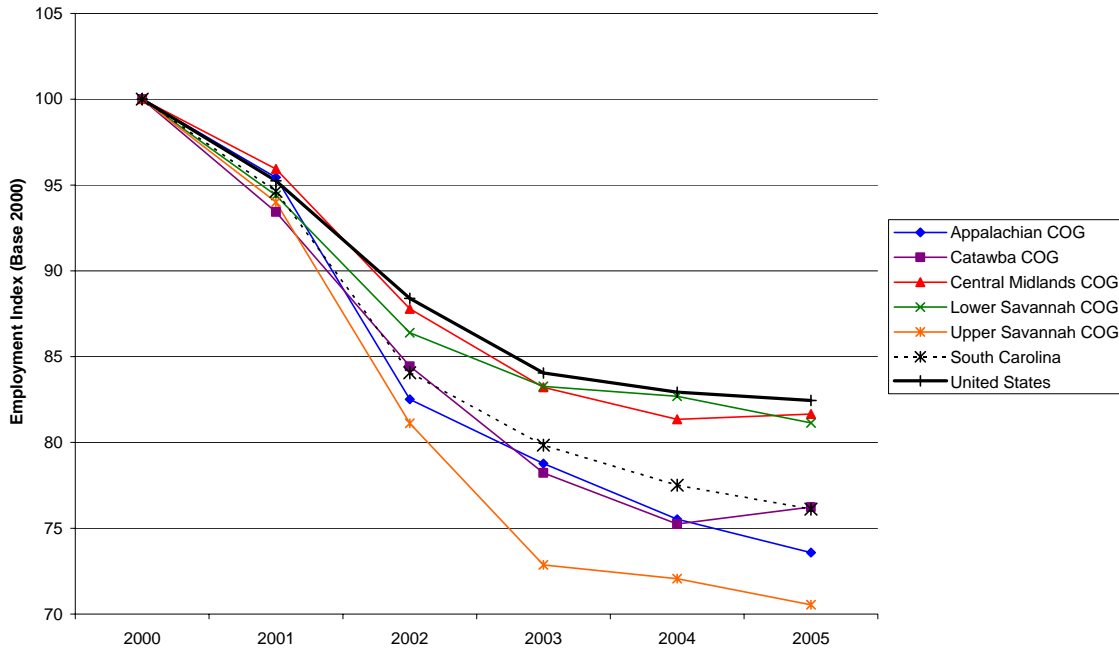
Employment Trends: Regional Councils of Governments, South Carolina, and United States, 2000-2005



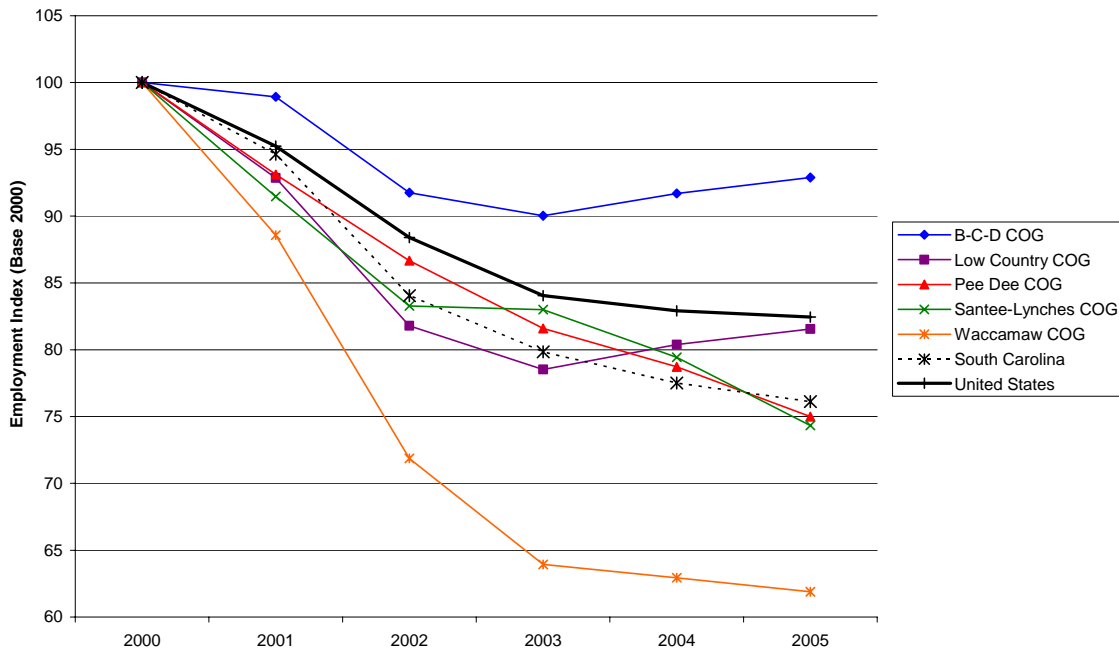
Employment Trends: Regional Councils of Governments, South Carolina, and United States, 2000-2005



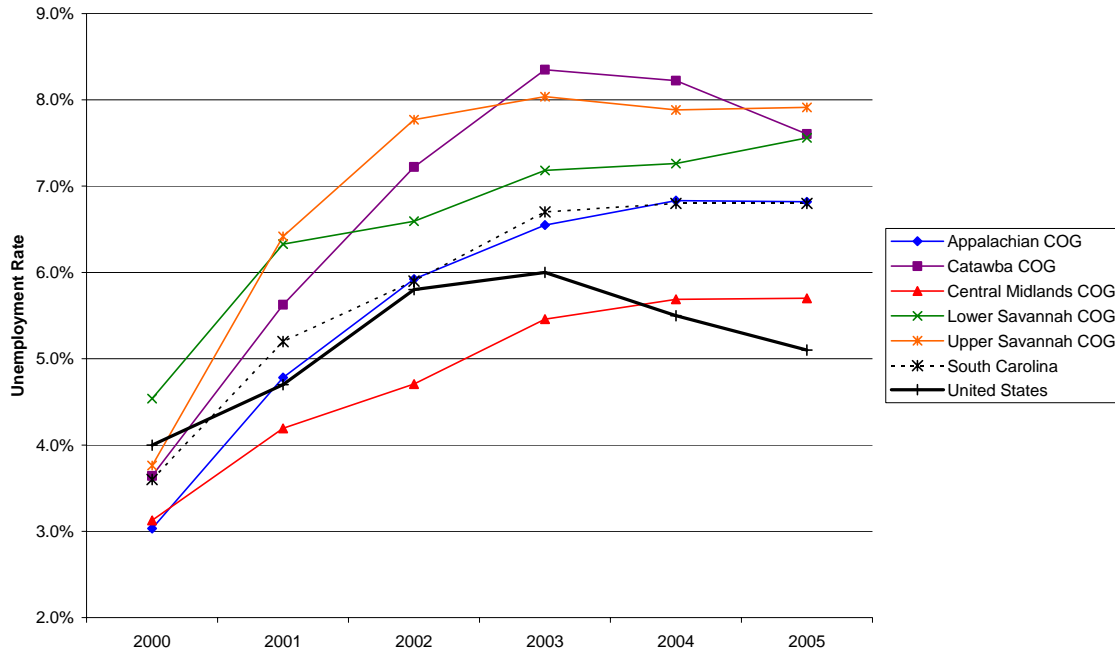
Manufacturing Employment Trends: Regional Councils of Governments, South Carolina, and United States, 2000-2005



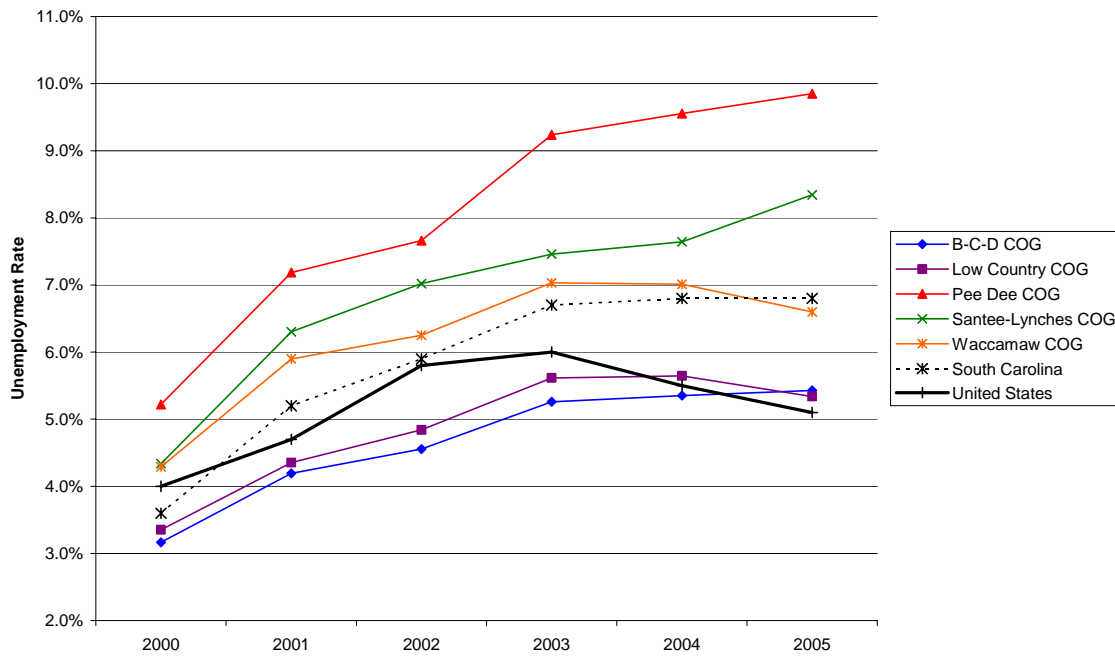
Manufacturing Employment Trends: Regional Councils of Governments, South Carolina, and United States, 2000-2005



Regional Councils of Governments, South Carolina, and United States Unemployment Rates, 2000-2005



Regional Councils of Governments, South Carolina, and United States Unemployment Rates, 2000-2005



B. Overview of Economic Trends in South Carolina's Councils of Governments Regions (COGs): Earnings and Income, 2000-2004

South Carolina's workforce experienced a 13.5% growth in earnings per worker between 2000 and 2004 (\$27,712 to \$31,447). The growth rate at the state level was greater than the national growth rate of 11.7%; however, 2004 state earnings per worker remained below the national average of \$38,798 (Table B.1). COGs with the highest earnings per worker in 2004 included Appalachian (\$33,029), Berkeley-Charleston-Dorchester (\$32,419), Central Midlands (\$32,678), and Lower Savannah (\$33,246). All of South Carolina's COG regions experienced positive growth in earnings per worker from 2000 to 2004. The largest increases were reported for the Berkeley-Charleston-Dorchester (17.2%), Santee-Lynches (15.3%), and Lowcountry (15%) regions.

Increases in earnings per worker translated into increased per capita incomes. The state per capita income grew 11.3%, from \$24,424 in 2000 to \$27,185 in 2004 (Table B.2). Per capita income for the nation grew at 10.7% during the same period. All COG regions experienced positive growth in per capita income between 2000 and 2004. The greatest percentage increases were observed in the Santee-Lynches (15.7%), Berkeley-Charleston-Dorchester (15.1%), and Lowcountry (14.5%) COGs. The highest per capita incomes for 2004 were reported in the Appalachian (\$27,610), Berkeley-Charleston-Dorchester (\$29,120), Central Midlands (\$29,876) and Lowcountry (\$30,846) COGs. Per capita incomes for the state and all COG regions remained below the national average of \$33,050 in 2004.

Changes in median household incomes were mixed across the state. The state (1.9%) and the Berkeley-Charleston-Dorchester (0.9%), Catawba (0.9%), and Pee Dee (0.2%) COGs experienced gains in median household income from 2000 to 2003. Seven COG regions [Appalachian (-0.6%), Central Midlands (-1.7%), Lowcountry (-0.2%), Lower Savannah (-0.7%), Santee-Lynches (-0.2%), Upper Savannah (-3.4%), and Waccamaw (-1.4%)] reported declines in median incomes over the period 2000-2003 (Table B.3). The highest median incomes in 2003 were reported in the Berkeley-Charleston-Dorchester (\$40,788), Catawba (\$40,016) and Central Midlands (\$41,170) regions; however, none of the COGs had median household incomes above the national average of \$43,318. Growth in median incomes over the last single year period (2002-2003) is encouraging. Over 50 percent of the COG regions grew at a rate faster than the national rate of 2.1% for this period.

Transfer payments in South Carolina and most of the COG regions grew at a higher rate between 2000 and 2004 than the national average of 33.7% (Table B.4). The state's growth rate during this period was 39.1%, and five COG regions experienced increases greater than the state average: Appalachian (40.1%), Berkeley-Charleston-Dorchester (40.5%), Catawba (42.5%), Lowcountry (42.8%), and Waccamaw (43.9%). Only the Upper Savannah (28.9%) region reported an increase in transfer payments at a rate lower than the national and state rates. Between 2003 and 2004 all COG regions reported growth in transfer payments of between 8% and 9% compared to the national rate of 6.2%.

South Carolina's poverty rate (13.8%) in 2003 was higher than the national rate of 12.5%; however, the state's rate grew at a slower pace than the rest of the nation between 2000 and 2003 (Table B.5). In addition, the state poverty rate declined in 2003 even as the poverty rate in the nation increased. The Catawba and Appalachian COG regions reported poverty rates of 12.5% and 12.3% in 2003, both equal to, or less than the national rate. With the exception of the Appalachian (1.0%), Catawba (2.7%), and Central Midlands (2.9%) regions, all COGs reduced their poverty rates between 2002 and 2003. Declines in poverty rates were greatest in the Lowcountry (-9.6%) and Waccamaw (-5.1%) COGs from 2002 to 2003.

B. Earnings and Income

Geographic Area	Year						Percent Change	
	B.2 Per Capita Personal Income							
	2000	2001	2002	2003	2004	2005	2000-2004	2003-2004
Appalachian COG	25,729	25,957	26,206	26,658	27,610	--	7.3%	3.6%
B-C-D COG	25,309	26,181	26,893	27,719	29,120	--	15.1%	5.1%
Catawba COG	23,518	24,080	24,821	25,370	26,452	--	12.5%	4.3%
Central Midlands COG	27,089	27,432	27,759	28,300	29,879	--	10.3%	5.6%
Lowcountry COG	26,946	28,350	28,333	29,162	30,846	--	14.5%	5.8%
Lower Savannah COG	22,207	22,982	23,489	24,012	25,043	--	12.8%	4.3%
Pee Dee COG	21,132	21,920	22,231	22,971	24,005	--	13.6%	4.5%
Santee-Lynches COG	20,519	21,131	21,735	22,503	23,742	--	15.7%	5.5%
Upper Savannah COG	21,276	21,748	21,529	21,734	22,974	--	8.0%	5.7%
Waccamaw COG	22,992	23,613	23,814	24,673	25,720	--	11.9%	4.2%
South Carolina	24,424	24,994	25,361	25,972	27,185	--	11.3%	4.7%
U.S.	29,845	30,574	30,810	31,484	33,050	--	10.7%	5.0%

Source: Bureau of Economic Analysis, Regional Economic Information System (REIS): TableCA31

Available at: <http://www.bea.gov/bea/regional/reis/>

B.3 Median Household Income

	2000	2001	2002	2003	2004	2005	2000-2003	2002-2003
Appalachian COG	39,604	38,737	38,596	39,355	--	--	-0.6%	2.0%
B-C-D COG	40,424	39,397	39,606	40,788	--	--	0.9%	3.0%
Catawba COG	39,671	38,799	39,092	40,016	--	--	0.9%	2.4%
Central Midlands COG	41,889	41,028	40,801	41,170	--	--	-1.7%	0.9%
Lowcountry COG	39,869	38,830	38,954	39,797	--	--	-0.2%	2.2%
Lower Savannah COG	33,878	32,943	33,034	33,625	--	--	-0.7%	1.8%
Pee Dee COG	31,167	30,376	30,343	31,240	--	--	0.2%	3.0%
Santee-Lynches COG	33,286	32,334	32,272	33,229	--	--	-0.2%	3.0%
Upper Savannah COG	34,085	33,000	32,757	32,927	--	--	-3.4%	0.5%
Waccamaw COG	34,981	33,607	33,443	34,488	--	--	-1.4%	3.1%
South Carolina	37,283	36,953	37,442	38,003	--	--	1.9%	1.5%
U.S.	41,990	42,228	42,409	43,318	--	--	3.2%	2.1%

Source: U.S. Census Bureau, Small Area Income and Poverty Estimates.

Available at: <http://www.census.gov/hhes/www/saipe/tables.html>

B. Earnings and Income

Geographic Area	Year						Percent Change	
	B.4 Transfer Payments							
	2000	2001	2002	2003	2004	2005	2000-2004	2003-2004
Appalachian COG	3,474,642	3,873,017	4,263,895	4,478,357	4,868,358	--	40.1%	8.7%
B-C-D COG	1,760,355	1,955,829	2,145,148	2,264,562	2,472,433	--	40.5%	9.2%
Catawba COG	991,425	1,110,791	1,237,547	1,311,576	1,412,789	--	42.5%	7.7%
Central Midlands COG	1,913,541	2,115,081	2,322,341	2,443,159	2,666,219	--	39.3%	9.1%
Lowcountry COG	747,165	829,533	912,778	982,800	1,066,831	--	42.8%	8.6%
Lower Savannah COG	1,198,395	1,322,818	1,436,734	1,509,248	1,628,476	--	35.9%	7.9%
Pee Dee COG	1,434,686	1,574,235	1,696,993	1,783,966	1,930,087	--	34.5%	8.2%
Santee-Lynches COG	794,313	881,889	964,766	1,014,295	1,108,770	--	39.6%	9.3%
Upper Savannah COG	851,460	949,625	1,000,711	1,006,884	1,097,736	--	28.9%	9.0%
Waccamaw COG	1,176,127	1,319,568	1,451,127	1,549,738	1,692,650	--	43.9%	9.2%
South Carolina	14,340,109	15,930,385	17,430,038	18,342,582	19,942,345	--	39.1%	8.7%
U.S.	1,018,106,000	1,117,218,000	1,219,954,000	1,282,540,000	1,361,666,000	--	33.7%	6.2%

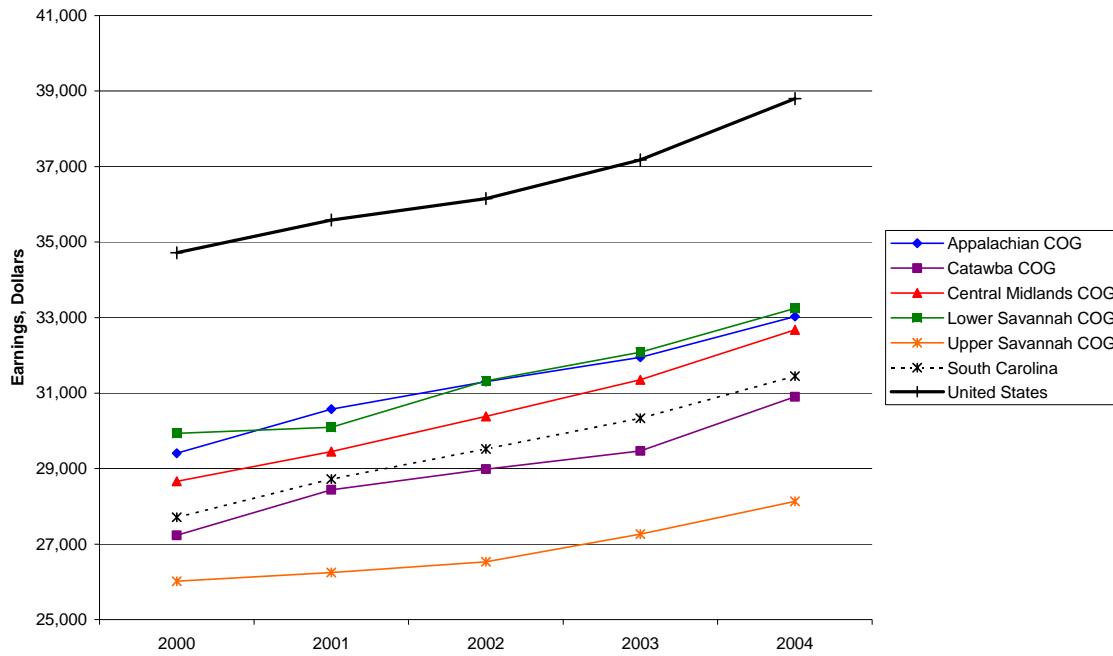
Source: Bureau of Economic Analysis, Regional Economic Information System (REIS): TableCA35
 Available at: <http://www.bea.gov/region/reis>

B.5 Poverty Rate

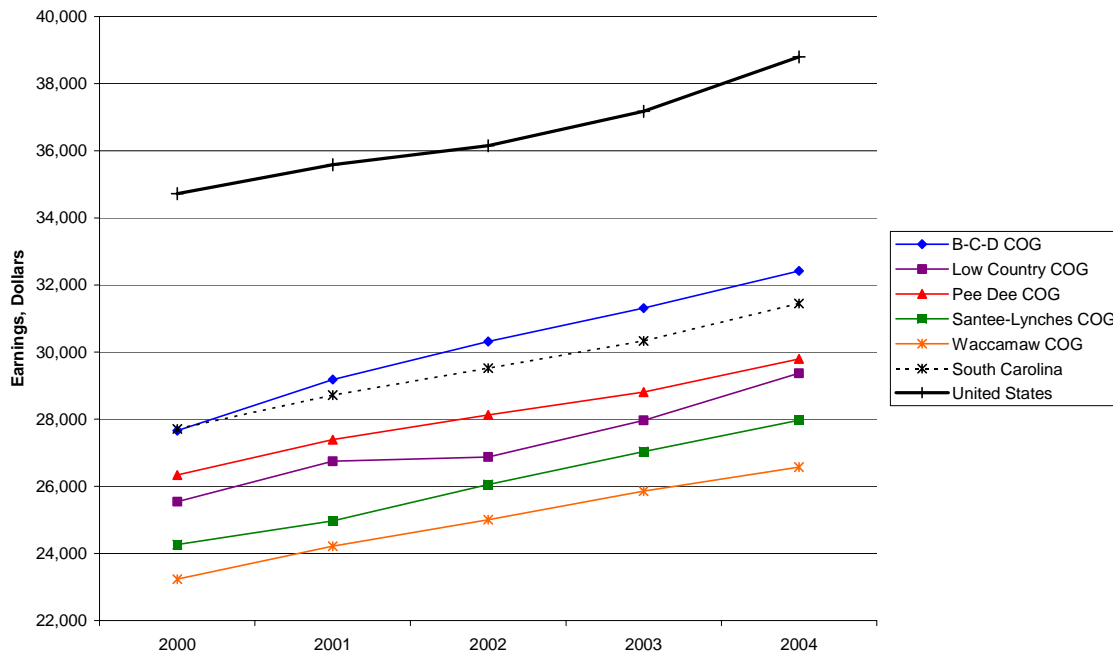
	2000	2001	2002	2003	2004	2005	2000-2003	2002-2003
Appalachian COG	10.4%	11.6%	12.2%	12.3%	--	--	17.7%	1.0%
B-C-D COG	12.4%	13.2%	13.2%	13.0%	--	--	4.1%	-1.6%
Catawba COG	10.9%	11.7%	12.2%	12.5%	--	--	15.5%	2.7%
Central Midlands COG	11.1%	12.0%	12.4%	12.7%	--	--	15.0%	2.9%
Lowcountry COG	14.2%	15.9%	15.7%	14.2%	--	--	-0.3%	-9.6%
Lower Savannah COG	15.9%	16.9%	16.9%	16.6%	--	--	4.2%	-1.9%
Pee Dee COG	17.9%	18.7%	18.5%	17.9%	--	--	0.4%	-2.8%
Santee-Lynches COG	15.6%	16.7%	16.8%	16.3%	--	--	4.5%	-3.2%
Upper Savannah COG	13.4%	15.0%	15.3%	14.6%	--	--	8.4%	-4.6%
Waccamaw COG	14.4%	15.8%	15.3%	14.5%	--	--	0.5%	-5.1%
South Carolina	12.8%	13.8%	14.0%	13.8%	--	--	7.8%	-1.4%
U.S.	11.3%	11.7%	12.1%	12.5%	--	--	10.6%	3.3%

Source: U.S. Census Bureau, Small Area Income and Poverty Estimates. Available at: <http://www.census.gov/hhes/www/saipe/tables.html>

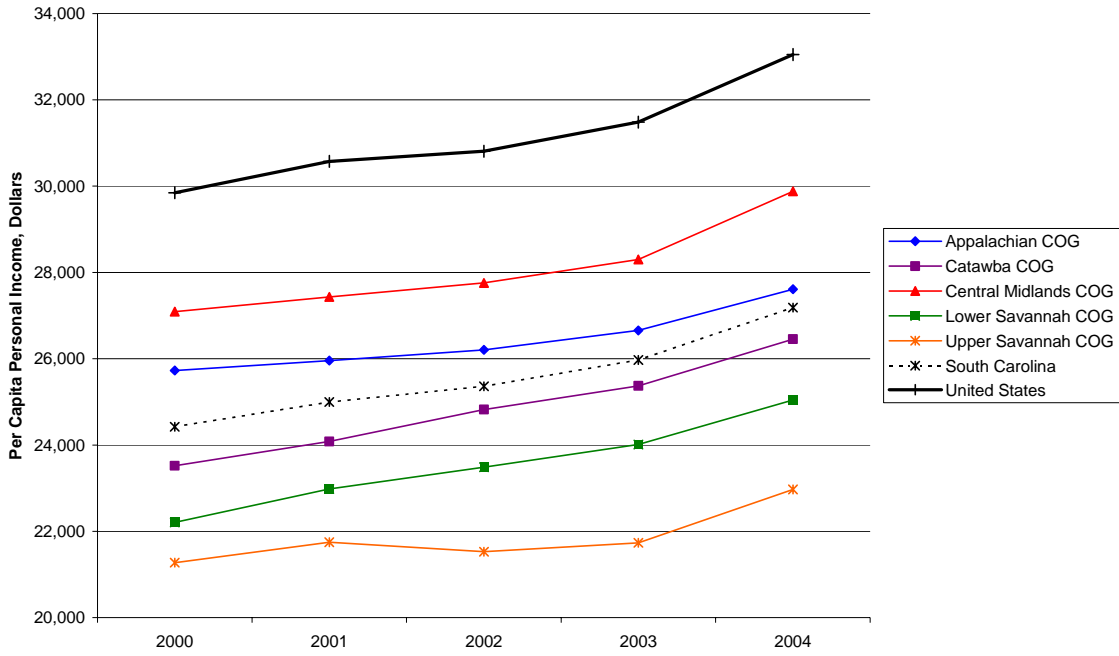
Earnings per Worker: Regional Councils of Governments, South Carolina, and United States, 2000-2004



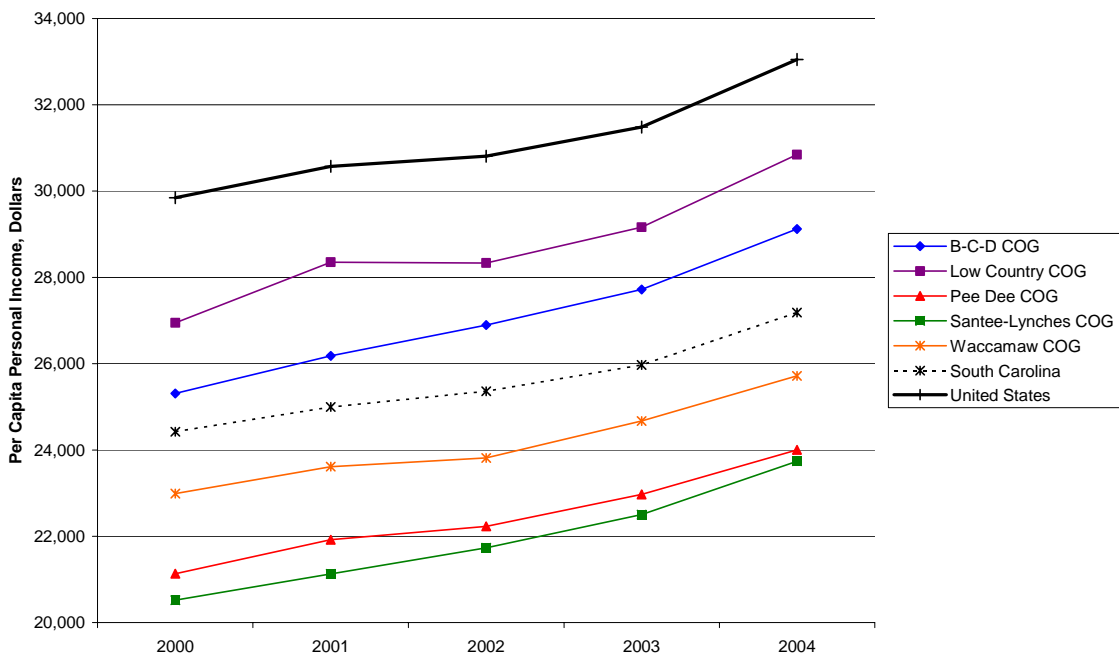
Earnings per Worker: Regional Councils of Governments, South Carolina, and United States, 2000-2004



Per Capita Personal Income: Regional Councils of Governments, South Carolina, and United States, 2000-2004



Per Capita Personal Income: Regional Councils of Governments, South Carolina, and United States, 2000-2004



C. Overview of Economic Trends in South Carolina's Councils of Governments Regions (COGs): Innovative Activity, 2000-2005

Between 2000 and 2005, South Carolina scientists and inventors received 7,771 patents (Table C.1). Much of this innovative activity (4,172 patents) was in the Appalachian COG. The Appalachian COG counties reported 13.5 patents per 10,000 employees in 2005; a number greater than both the state (5.9) and national (11.1) averages of patents per 10,000 employees (Table C.2). The remaining COGs reported between 2 to 4 patents per 10,000 employees. The number of patents decreased between 2000 and 2005 across all geographic areas with the exception of the Waccamaw and Appalachian COG regions. Waccamaw COG increased its total patents from 11 in 2000 to 37 in 2005, and patenting activity in the Appalachian COG region increased from 511 total patents in 2000 to 676 in 2005 (Table C.1).

Innovative activity also may be reflected in funding for Small Business Innovation Research (SBIR) and Small Business Technology Transfer (STTR) Program research award dollars. In 2005 the U.S. average for SBIR and STTR funding was \$14,715 per 1,000 employees. South Carolina received only \$6,042 of funding per 1,000 employees in 2005 (Table C.5). On the other hand, state SBIR and STTR funding has grown significantly (189%) between 2000 and 2005. The COGs receiving the largest dollar amounts per 1,000 employees, averaged over the past 6 years, include Berkeley-Charleston-Dorchester (\$8,916), Central Midlands (\$10,075), and Lowcountry (\$13,531) regions. Readers are encouraged to refer to Tables C.4 and C.5 for more information on SBIR and STTR awards because the funding is highly variable by region and year.

C. Innovative Activity

Geographic Area	Year						Percent Change	
C.1 Patents (Total)								
	2000	2001	2002	2003	2004	2005	2000-2005	2004-2005
Appalachian COG	511	661	783	815	726	676	32.3%	-6.9%
B-C-D COG	194	177	219	154	190	121	-37.6%	-36.3%
Catawba COG	77	73	93	66	52	52	-32.5%	0.0%
Central Midlands COG	146	147	105	125	131	95	-34.9%	-27.5%
Lowcountry COG	37	30	25	26	30	21	-43.2%	-30.0%
Lower Savannah COG	61	50	44	64	37	34	-44.3%	-8.1%
Pee Dee COG	113	87	72	72	80	69	-38.9%	-13.8%
Santee-Lynches COG	17	20	18	10	18	17	0.0%	-5.6%
Upper Savannah COG	18	12	29	20	23	17	-5.6%	-26.1%
Waccamaw COG	11	41	41	44	37	37	236.4%	0.0%
South Carolina	1,185	1,298	1,429	1,396	1,324	1,139	-3.9%	-14.0%
U.S.	176,082	184,046	184,418	187,047	181,319	157,740	-10.4%	-13.0%

Source: United States Patent and Trademark Office, Patent Electronic Business Center Available at: <http://www.uspto.gov/ebc/index.html>

C.2 Patents per 10,000 Employees

	2000	2001	2002	2003	2004	2005	2000-2005	2004-2005
Appalachian COG	9.8	13.2	16.0	16.6	14.6	13.5	37.7%	-7.4%
B-C-D COG	7.5	7.1	8.6	5.8	7.0	4.3	-42.7%	-37.8%
Catawba COG	5.4	5.2	6.7	4.7	3.7	3.6	-33.0%	-2.7%
Central Midlands COG	4.9	5.1	3.6	4.2	4.3	3.1	-37.5%	-29.0%
Lowcountry COG	4.5	3.7	3.0	3.1	3.4	2.2	-50.1%	-34.2%
Lower Savannah COG	4.7	4.0	3.5	5.0	2.8	2.6	-45.4%	-10.2%
Pee Dee COG	7.8	6.3	5.2	5.2	5.8	5.0	-35.9%	-13.5%
Santee-Lynches COG	1.9	2.3	2.1	1.2	2.0	1.9	-0.7%	-7.2%
Upper Savannah COG	1.8	1.3	3.1	2.2	2.5	1.8	-1.4%	-27.5%
Waccamaw COG	0.8	3.0	3.0	3.1	2.5	2.4	198.9%	-5.0%
South Carolina	6.2	7.0	7.8	7.5	7.0	5.9	-5.7%	-15.7%
U.S.	12.9	13.4	13.5	13.6	13.0	11.1	-13.5%	-14.5%

Source: United States Patent and Trademark Office, Patent Electronic Business Center Available at: <http://www.uspto.gov/ebc/index.html>

C. Innovative Activity

Geographic Area	Year					
C.3 SBIR/STTR Phase I and II Total Award						
	2000	2001	2002	2003	2004	2005
Appalachian COG	\$499,882	\$200,000	\$1,314,405	\$199,860	\$1,326,026	\$569,993
B-C-D COG	\$1,854,724	\$749,594	\$4,097,162	\$1,304,472	\$1,221,101	\$4,985,811
Catawba COG	\$0	\$0	\$0	\$99,955	\$69,588	\$509,807
Central Midlands COG	\$780,000	\$1,845,758	\$1,961,128	\$5,102,978	\$4,245,527	\$4,213,057
Lowcountry COG	\$772,425	\$3,136,523	\$139,644	\$899,878	\$1,242,614	\$584,999
Lower Savannah COG	\$69,914	\$0	\$0	\$99,852	\$0	\$0
Pee Dee COG	\$0	\$93,745	\$0	\$0	\$0	\$0
Santee-Lynches COG	\$0	\$0	\$0	\$0	\$100,000	\$750,000
Upper Savannah COG	\$0	\$273,375	\$499,998	\$926,630	\$185,746	\$99,622
Waccamaw COG	\$0	\$0	\$95,062	\$0	\$0	\$0
South Carolina	\$3,976,945	\$6,398,970	\$8,107,399	\$8,633,625	\$8,390,602	\$11,713,289
U.S.	\$1,108,787,548	\$1,222,097,359	\$1,591,478,031	\$1,861,050,297	\$2,223,301,340	\$2,085,560,074

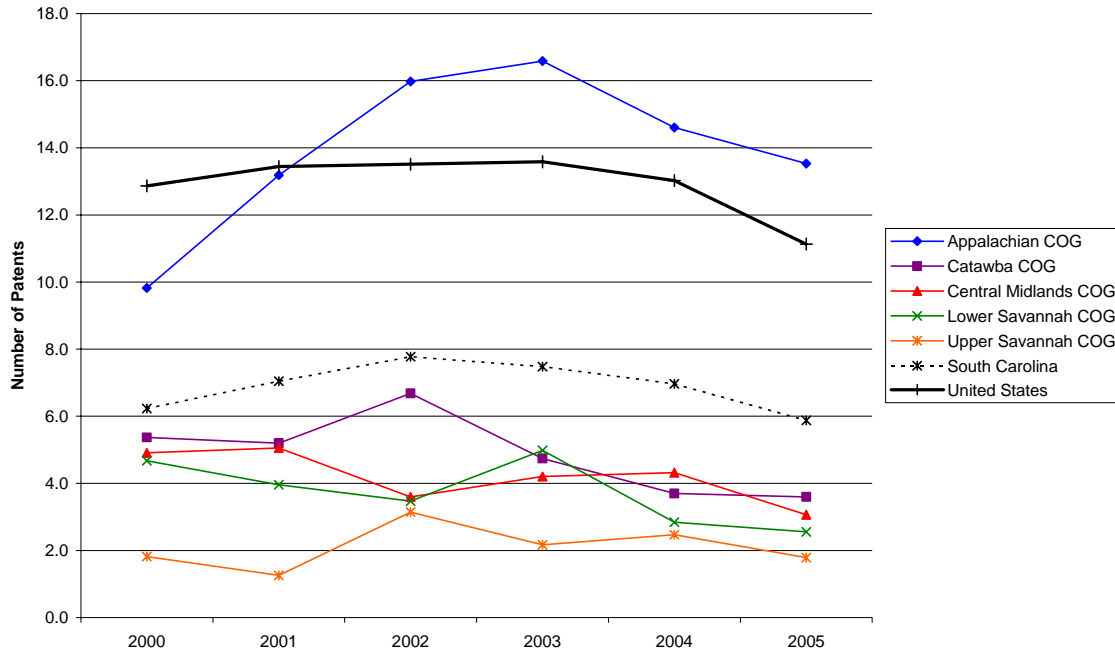
Source: U.S. Small Business Administration, Technology Resources Network Available at: http://tech-net.sba.gov/tech-net/public/dsp_search.cfm

C.4 SBIR/STTR Award per 1,000 Employees

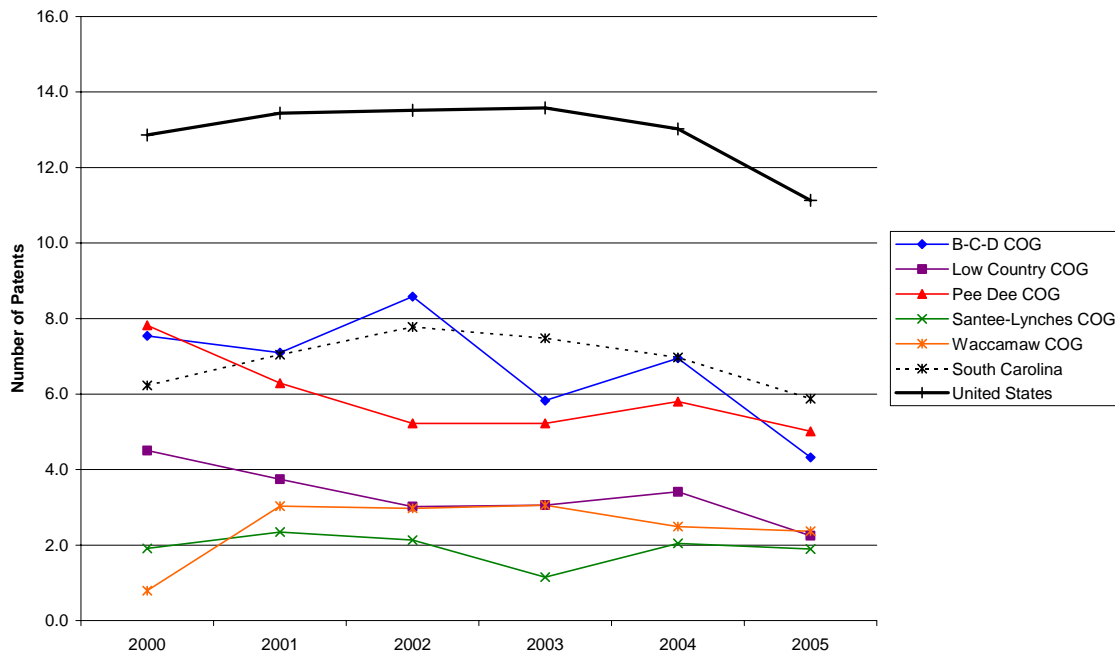
	2000	2001	2002	2003	2004	2005
Appalachian COG	\$961	\$399	\$2,682	\$407	\$2,667	\$1,141
B-C-D COG	\$7,212	\$3,006	\$16,059	\$4,938	\$4,467	\$17,814
Catawba COG	\$0	\$0	\$0	\$718	\$495	\$3,528
Central Midlands COG	\$2,622	\$6,347	\$6,724	\$17,160	\$13,999	\$13,599
Lowcountry COG	\$9,401	\$39,119	\$1,687	\$10,581	\$14,137	\$6,261
Lower Savannah COG	\$536	\$0	\$0	\$777	\$0	\$0
Pee Dee COG	\$0	\$678	\$0	\$0	\$0	\$0
Santee-Lynches COG	\$0	\$0	\$0	\$0	\$1,137	\$8,375
Upper Savannah COG	\$0	\$2,871	\$5,428	\$10,048	\$1,997	\$1,050
Waccamaw COG	\$0	\$0	\$689	\$0	\$0	\$0
South Carolina	\$2,091	\$3,473	\$4,412	\$4,625	\$4,417	\$6,042
U.S.	\$8,100	\$8,925	\$11,660	\$13,512	\$15,966	\$14,715

Source: U.S. Small Business Administration, Technology Resources Network Available at: http://tech-net.sba.gov/tech-net/public/dsp_search.cfm

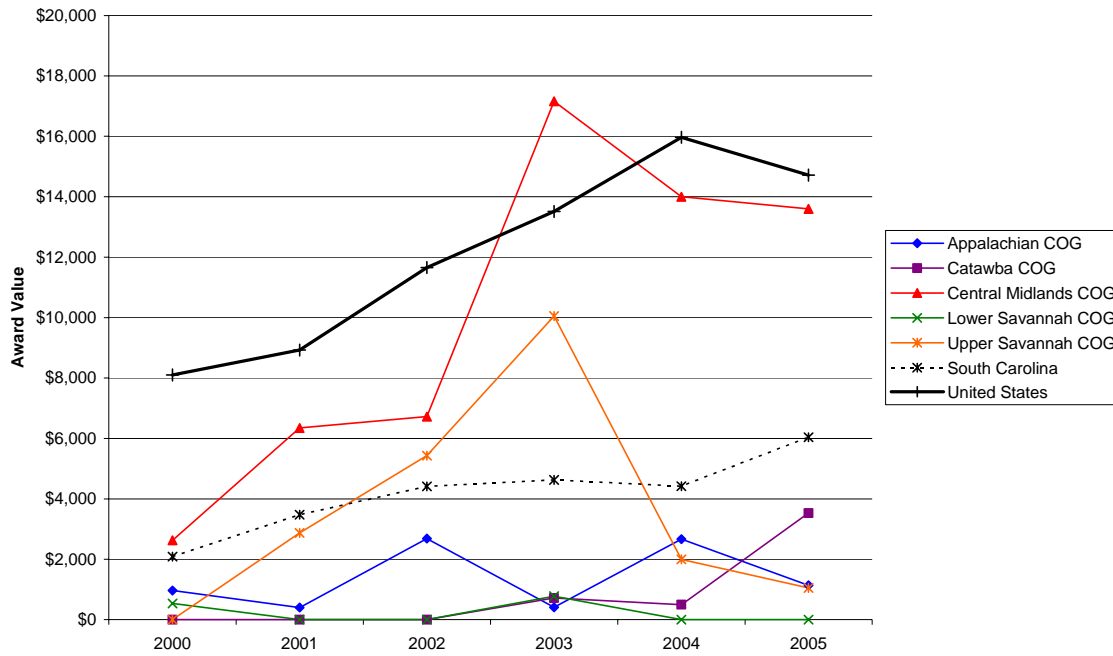
Patents per 10,000 Employees: Regional Councils of Governments, South Carolina, and United States, 2000-2005



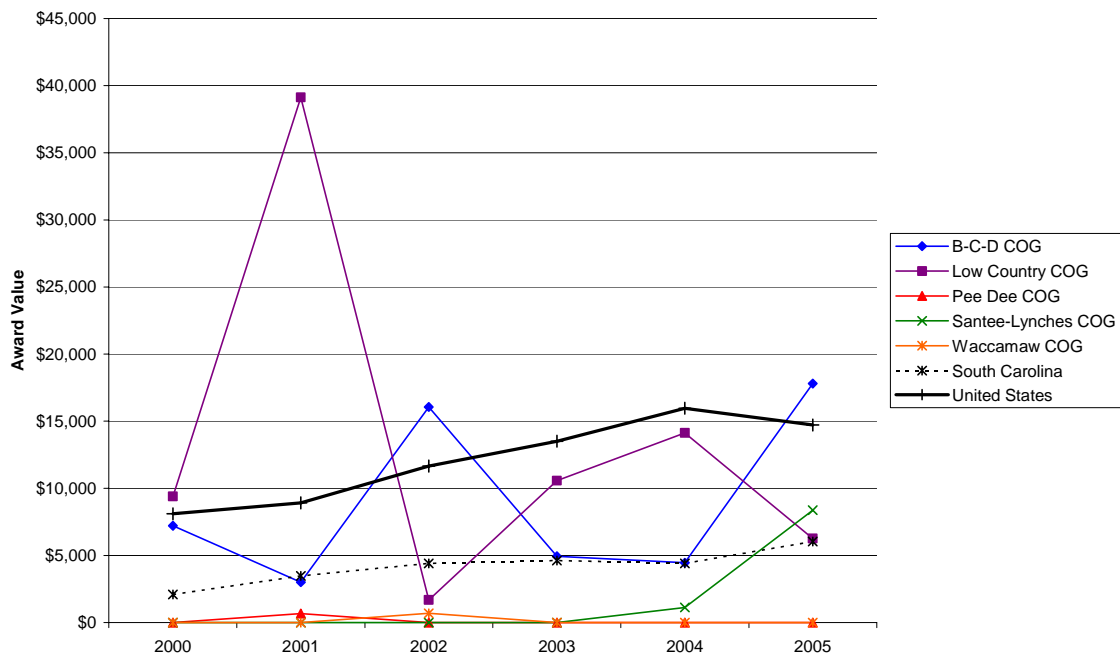
Patents per 10,000 Employees: Regional Councils of Governments, South Carolina, and United States, 2000-2005



SBIR/STTR Phase I and II Awards per 1,000 Employees: Regional Councils of Governments, South Carolina, and United States, 2000-2005



SBIR/STTR Phase I and II Awards per 1,000 Employees: Regional Councils of Governments, South Carolina, and United States, 2000-2005



Private Establishments

FIPS		Year					Percent Change	
		2000	2001	2002	2003	2004	2000-2004	2003-2004
45001	Abbeville	340	335	340	335	351	3.2%	4.8%
45003	Aiken	2,620	2,620	2,625	2,687	2,709	3.4%	0.8%
45005	Allendale	157	146	154	160	152	-3.2%	-5.0%
45007	Anderson	3,725	3,674	3,796	3,785	3,819	2.5%	0.9%
45009	Bamberg	303	305	296	290	285	-5.9%	-1.7%
45011	Barnwell	391	395	409	382	394	0.8%	3.1%
45013	Beaufort	4,287	4,397	4,457	4,570	4,709	9.8%	3.0%
45015	Berkeley	1,805	1,858	2,065	2,120	2,214	22.7%	4.4%
45017	Calhoun	202	198	209	203	206	2.0%	1.5%
45019	Charleston	10,486	10,520	10,719	10,926	11,242	7.2%	2.9%
45021	Cherokee	1,034	1,012	1,033	1,047	1,021	-1.3%	-2.5%
45023	Chester	567	570	567	573	565	-0.4%	-1.4%
45025	Chesterfield	738	731	758	753	755	2.3%	0.3%
45027	Clarendon	528	509	491	489	501	-5.1%	2.5%
45029	Colleton	816	806	830	823	816	0.0%	-0.9%
45031	Darlington	1,276	1,266	1,264	1,263	1,246	-2.4%	-1.3%
45033	Dillon	541	529	514	504	507	-6.3%	0.6%
45035	Dorchester	1,779	1,820	1,876	1,906	1,986	11.6%	4.2%
45037	Edgefield	340	333	337	316	308	-9.4%	-2.5%
45039	Fairfield	323	309	335	340	329	1.9%	-3.2%
45041	Florence	3,261	3,256	3,298	3,269	3,270	0.3%	0.0%
45043	Georgetown	1,794	1,836	1,876	1,936	1,969	9.8%	1.7%
45045	Greenville	11,625	11,468	11,431	11,435	11,744	1.0%	2.7%
45047	Greenwood	1,594	1,528	1,514	1,534	1,534	-3.8%	0.0%
45049	Hampton	443	446	430	446	437	-1.4%	-2.0%
45051	Horry	7,187	7,211	7,409	7,544	7,940	10.5%	5.2%
45053	Jasper	435	419	467	462	475	9.2%	2.8%
45055	Kershaw	1,186	1,185	1,162	1,179	1,222	3.0%	3.6%
45057	Lancaster	1,176	1,151	1,165	1,184	1,156	-1.7%	-2.4%
45059	Laurens	915	889	904	909	890	-2.7%	-2.1%
45061	Lee	246	240	231	242	233	-5.3%	-3.7%
45063	Lexington	4,968	4,952	5,225	5,307	5,405	8.8%	1.8%
45067	Marion	655	647	643	639	655	0.0%	2.5%
45069	Marlboro	423	416	423	416	405	-4.3%	-2.6%
45065	McCormick	132	125	126	129	125	-5.3%	-3.1%
45071	Newberry	731	725	728	710	750	2.6%	5.6%
45073	Oconee	1,493	1,526	1,542	1,525	1,552	4.0%	1.8%
45075	Orangeburg	1,938	1,929	1,913	1,842	1,886	-2.7%	2.4%
45077	Pickens	2,184	2,168	2,174	2,175	2,228	2.0%	2.4%
45079	Richland	9,191	9,265	9,038	9,123	9,268	0.8%	1.6%
45081	Saluda	245	248	226	230	224	-8.6%	-2.6%
45083	Spartanburg	6,283	6,266	6,425	6,467	6,552	4.3%	1.3%
45085	Sumter	1,864	1,875	1,949	1,916	1,950	4.6%	1.8%
45087	Union	539	511	499	490	481	-10.8%	-1.8%
45089	Williamsburg	538	526	502	493	495	-8.0%	0.4%
45091	York	3,811	3,852	3,955	4,017	4,077	7.0%	1.5%
	South Carolina	97146	96993	98330	99091	101038	4.0%	2.0%
	United States	7070048	7095302	7200770	7254745	7387724	4.5%	1.8%

Source: U.S. Census Bureau, Business Patterns.
 Available at: <http://www.census.gov/epcd/cbp/view/cbpview.html>

Employment**FIPS**

		2000	2001	2002	2003	2004
45001	Abbeville	12,010	11,450	10,900	10,780	10,980
45003	Aiken	66,360	64,780	65,800	67,720	69,760
45005	Allendale	3,530	3,400	3,250	3,130	2,970
45007	Anderson	81,180	78,430	76,840	76,130	77,460
45009	Bamberg	6,080	5,960	5,900	6,050	5,970
45011	Barnwell	9,720	9,240	8,910	8,710	8,570
45013	Beaufort	49,890	49,110	51,530	53,730	56,420
45015	Berkeley	63,570	61,550	62,680	64,600	66,680
45017	Calhoun	6,810	6,610	6,520	6,600	6,630
45019	Charleston	147,850	142,950	146,070	150,930	155,930
45021	Cherokee	24,460	23,590	22,300	22,350	22,950
45023	Chester	15,480	14,950	14,150	14,050	14,140
45025	Chesterfield	18,380	17,420	17,060	16,970	16,510
45027	Clarendon	12,350	11,690	11,660	11,730	11,570
45029	Colleton	15,360	14,890	14,950	15,040	15,170
45031	Darlington	30,160	29,060	29,060	28,830	28,940
45033	Dillon	12,480	11,740	11,920	12,020	11,730
45035	Dorchester	45,760	44,830	46,380	48,640	50,770
45037	Edgefield	9,960	9,660	9,770	9,970	10,130
45039	Fairfield	10,480	10,190	10,200	10,220	10,440
45041	Florence	58,220	56,250	56,410	56,550	57,520
45043	Georgetown	24,500	24,090	24,040	24,460	25,340
45045	Greenville	201,260	193,940	189,790	190,660	193,200
45047	Greenwood	31,210	30,260	28,820	29,010	29,580
45049	Hampton	7,970	7,560	7,540	7,310	7,020
45051	Horry	100,460	97,740	100,620	105,880	109,800
45053	Jasper	8,940	8,620	8,760	8,970	9,290
45055	Kershaw	26,020	25,440	25,380	25,910	26,540
45057	Lancaster	29,330	28,260	27,680	26,930	27,150
45059	Laurens	33,320	31,830	30,780	30,650	30,620
45061	Lee	7,720	7,560	7,510	7,620	7,560
45063	Lexington	114,810	112,630	113,090	115,750	118,820
45065	McCormick	3,470	3,320	3,230	3,190	3,100
45067	Marion	14,030	12,740	12,470	12,490	12,350
45069	Marlboro	11,190	11,120	10,880	11,010	10,890
45071	Newberry	16,180	16,040	15,780	16,490	16,220
45073	Oconee	31,220	30,280	29,520	29,620	29,400
45075	Orangeburg	37,910	36,260	36,390	36,270	36,100
45077	Pickens	56,730	54,170	52,320	52,150	52,430
45079	Richland	155,970	151,960	152,610	154,920	157,790
45081	Saluda	9,020	8,710	8,620	8,620	8,620
45083	Spartanburg	125,360	120,890	119,330	120,610	121,730
45085	Sumter	42,800	40,490	39,810	41,560	42,280
45087	Union	13,410	12,740	12,180	11,850	11,470
45089	Williamsburg	14,000	13,430	13,290	13,620	13,410
45091	York	85,110	84,450	85,110	86,360	87,890
	South Carolina	1,902,030	1,842,290	1,837,770	1,866,680	1,899,810
	United States	136,891,000	136,933,000	136,485,000	137,736,000	139,252,000

Source: South Carolina Employment Security Commission: Labor Force and Employment.

Available at: <http://www.sces.org/LMI/data/labor-force/lf.asp>

Manufacturing Employment

FIPS		Year						Percent Change	
		2000	2001	2002	2003	2004	2005	2000-2005	2004-2005
45001	Abbeville	3,530	3,257	2,826	2,659	2,655	2,617	-25.9%	-1.4%
45003	Aiken	9,484	9,579	8,433	8,280	8,235	7,997	-15.7%	-2.9%
45005	Allendale	1,216	1,408	1,247	1,104	1,079	1,063	-12.6%	-1.5%
45007	Anderson	19,009	17,752	16,025	14,054	14,057	14,330	-24.6%	1.9%
45009	Bamberg	1,191	1,172	1011	853	861	865	-27.4%	0.5%
45011	Barnwell	3,608	3,327	2,932	2,797	2,742	2,677	-25.8%	-2.4%
45013	Beaufort	1,083	1,009	913	958	1,012	976	-9.9%	-3.6%
45015	Berkeley	7,832	7,632	7,188	7,060	6,322	6,202	-20.8%	-1.9%
45017	Calhoun	1,718	1,525	1,391	1,397	1,415	1,409	-18.0%	-0.4%
45019	Charleston	9,919	9,569	8,444	8,287	9,020	9,478	-4.4%	5.1%
45021	Cherokee	8,870	7,988	6,807	6,545	6,227	6,274	-29.3%	0.8%
45023	Chester	5,026	5,031	4,350	4,008	3,902	4,165	-17.1%	6.7%
45025	Chesterfield	7,211	6,665	6,156	5,723	5,408	5,006	-30.6%	-7.4%
45027	Clarendon	1,646	1,487	1,240	1,222	1,267	1,155	-29.8%	-8.8%
45029	Colleton	2,037	1,933	1,588	1,569	1,632	1,636	-19.7%	0.2%
45031	Darlington	6,986	6,743	6,229	5,909	5,686	5,745	-17.8%	1.0%
45033	Dillon	3,341	2,904	2,881	2,907	3,028	2,629	-21.3%	-13.2%
45035	Dorchester	4,950	5,257	5,198	5,092	5,475	5,406	9.2%	-1.3%
45037	Edgefield	1,980	1,595	1,317	1,354	1,387	1,245	-37.1%	-10.2%
45039	Fairfield	2,468	1,976	1661	835	741	819	-66.8%	10.5%
45041	Florence	11,552	11,043	10,187	9,351	8,794	8,703	-24.7%	-1.0%
45043	Georgetown	3,573	3,254	2,561	2,072	2,058	2,190	-38.7%	6.4%
45045	Greenville	48,669	47,056	38,429	37,358	35,283	34,330	-29.5%	-2.7%
45047	Greenwood	10,904	10,626	9,244	8,571	8,258	7,864	-27.9%	-4.8%
45049	Hampton	1,308	1,225	1054	869	815	890	-32.0%	9.2%
45051	Horry	7,006	6,154	5,017	4,485	4,335	4,145	-40.8%	-4.4%
45053	Jasper	479	390	459	457	486	500	4.4%	2.9%
45055	Kershaw	5,078	4,829	4,540	4,606	4,277	4,043	-20.4%	-5.5%
45057	Lancaster	6,716	6,354	5,630	4,688	4,491	4,358	-35.1%	-3.0%
45059	Laurens	6,482	6,024	5,122	3,862	4,048	4,334	-33.1%	7.1%
45061	Lee	459	394	439	364	380	432	-5.9%	13.7%
45063	Lexington	13,735	13,488	13,142	11,798	11,889	11,916	-13.2%	0.2%
45065	McCormick	473	405	331	313	281	254	-46.3%	-9.6%
45067	Marion	4,480	3,541	3,151	2,899	2,838	2,316	-48.3%	-18.4%
45069	Marlboro	3,055	3,208	3,141	3,096	3,078	3,068	0.4%	-0.3%
45071	Newberry	5,069	4,836	4,066	4,093	4,381	4,268	-15.8%	-2.6%
45073	Oconee	9,941	9,176	8,026	7,401	7,274	6,625	-33.4%	-8.9%
45075	Orangeburg	8,971	7,710	7,609	7,377	7,323	7,236	-19.3%	-1.2%
45077	Pickens	8,853	8,001	6,976	6,766	6,149	6,115	-30.9%	-0.6%
45079	Richland	13,422	12,983	11,587	12,143	11,212	11,325	-15.6%	1.0%
45081	Saluda	2,018	1,958	1,751	1,739	1,664	1,594	-21.0%	-4.2%
45083	Spartanburg	36,288	35,663	32,344	31,557	30,428	29,187	-19.6%	-4.1%
45085	Sumter	12,685	11,464	10,328	10,300	9,857	9,138	-28.0%	-7.3%
45087	Union	3,993	3,534	3,217	3,057	2,717	2,471	-38.1%	-9.1%
45089	Williamsburg	3,149	2,752	2,287	2,220	2,247	2,162	-31.3%	-3.8%
45091	York	11,964	10,961	10,191	9,914	9,732	10,122	-15.4%	4.0%
	South Carolina	345,152	326,608	290,127	275,573	267,511	262,708	-23.9%	-1.8%
	United States	17,263,000	16,441,000	15,259,000	14,510,000	14,315,100	14,232,000	-17.6%	-0.6%

Source: Bureau of Economic Analysis, Regional Economic Information System (REIS): Table CA25
 Available at: <http://www.bea.gov/bea/regional/reis/>

Unemployment

FIPS	County	Year						Percent Change	
		2000	2001	2002	2003	2004	2005	2000-2005	2004-2005
45001	Abbeville	460	800	920	1,040	980	960	108.7%	-2.0%
45003	Aiken	2,590	3,380	3,520	3,740	4,220	4,490	73.4%	6.4%
45005	Allendale	190	220	260	300	330	370	94.7%	12.1%
45007	Anderson	2,550	4,420	5,180	5,830	5,960	6,280	146.3%	5.4%
45009	Bamberg	330	420	430	500	480	590	78.8%	22.9%
45011	Barnwell	500	690	790	920	920	900	80.0%	-2.2%
45013	Beaufort	1,580	1,970	2,150	2,540	2,770	2,830	79.1%	2.2%
45015	Berkeley	2,100	2,820	2,940	3,710	3,920	3,900	85.7%	-0.5%
45017	Calhoun	260	420	450	490	480	550	111.5%	14.6%
45019	Charleston	4,900	6,170	7,180	8,440	8,940	9,330	90.4%	4.4%
45021	Cherokee	1,050	1,770	2,020	2,130	2,250	2,030	93.3%	-9.8%
45023	Chester	820	1,240	1,580	1,740	1,580	1,540	87.8%	-2.5%
45025	Chesterfield	870	1,400	1,470	1,880	1,870	1,780	104.6%	-4.8%
45027	Clarendon	690	950	970	1,100	1,130	1,260	82.6%	11.5%
45029	Colleton	600	790	970	1,190	1,200	1,220	103.3%	1.7%
45031	Darlington	1,510	1,930	2,170	2,580	2,590	2,770	83.4%	6.9%
45033	Dillon	910	1,190	1,060	1,270	1,290	1,350	48.4%	4.7%
45035	Dorchester	1,410	1,920	2,060	2,520	2,600	2,840	101.4%	9.2%
45037	Edgefield	370	490	520	530	650	830	124.3%	27.7%
45039	Fairfield	540	930	960	1,210	910	920	70.4%	1.1%
45041	Florence	2,430	3,240	3,940	4,770	5,200	5,660	132.9%	8.8%
45043	Georgetown	1,370	1,920	2,150	2,640	2,640	2,480	81.0%	-6.1%
45045	Greenville	5,290	7,550	9,610	10,930	12,050	11,610	119.5%	-3.7%
45047	Greenwood	1,370	2,210	2,830	2,960	2,840	3,010	119.7%	6.0%
45049	Hampton	350	500	620	770	750	690	97.1%	-8.0%
45051	Horry	3,730	5,040	5,420	6,220	6,680	6,730	80.4%	0.7%
45053	Jasper	320	390	470	560	540	530	65.6%	-1.9%
45055	Kershaw	1,000	1,380	1,640	1,750	1,740	1,920	92.0%	10.3%
45057	Lancaster	1,090	1,630	1,960	2,650	2,670	2,570	135.8%	-3.7%
45059	Laurens	1,100	2,200	2,550	2,490	2,380	2,290	108.2%	-3.8%
45061	Lee	460	570	610	710	730	810	76.1%	11.0%
45063	Lexington	3,140	4,150	4,630	5,450	6,020	6,230	98.4%	3.5%
45065	McCormick	230	350	400	450	390	400	73.9%	2.6%
45067	Marion	1,420	1,780	1,560	1,870	1,970	1,970	38.7%	0.0%
45069	Marlboro	820	1,170	1,230	1,660	1,650	1,500	82.9%	-9.1%
45071	Newberry	720	1,060	1,240	1,310	1,280	1,250	73.6%	-2.3%
45073	Oconee	1,120	1,730	2,120	2,390	2,350	2,780	148.2%	18.3%
45075	Orangeburg	2,330	3,400	3,500	3,990	3,750	3,980	70.8%	6.1%
45077	Pickens	1,720	2,850	3,330	3,790	3,860	3,830	122.7%	-0.8%
45079	Richland	5,200	6,590	7,580	9,200	10,080	10,330	98.7%	2.5%
45081	Saluda	340	480	540	590	720	660	94.1%	-8.3%
45083	Spartanburg	4,550	6,860	8,590	9,370	9,990	10,040	120.7%	0.5%
45085	Sumter	1,880	2,830	3,150	3,440	3,680	4,160	121.3%	13.0%
45087	Union	710	1,240	1,440	1,510	1,610	1,430	101.4%	-11.2%
45089	Williamsburg	1,130	1,520	1,630	2,030	1,880	1,840	62.8%	-2.1%
45091	York	2,800	4,260	5,850	6,780	6,740	6,350	126.8%	-5.8%
	South Carolina	70,820	100,810	116,190	133,910	139,220	141,780	100.20%	1.8%
	United States	5,692,000	6,801,000	8,378,000	8,774,000	8,149,000	7,591,000	33.4%	-6.8%

Source: South Carolina Employment Security Commission: Labor Force and Employment.
 Available at: <http://www.sces.org/LMI/data/labor-force/lf.asp>

Unemployment Rate

FIPS	County	Year						Percent Change	
		2000	2001	2002	2003	2004	2005	2000-2005	2004-2005
45001	Abbeville	3.7%	6.6%	7.8%	8.8%	8.2%	7.8%	111.1%	-5.0%
45003	Aiken	3.8%	5.0%	5.1%	5.2%	5.7%	6.0%	59.2%	4.8%
45005	Allendale	5.1%	6.1%	7.3%	8.7%	10.0%	10.9%	112.4%	8.5%
45007	Anderson	3.0%	5.3%	6.3%	7.1%	7.1%	7.5%	146.5%	5.1%
45009	Bamberg	5.1%	6.6%	6.9%	7.6%	7.4%	8.7%	69.0%	16.9%
45011	Barnwell	4.9%	6.9%	8.1%	9.6%	9.7%	9.3%	89.8%	-4.2%
45013	Beaufort	3.1%	3.9%	4.0%	4.5%	4.7%	4.5%	45.2%	-4.7%
45015	Berkeley	3.2%	4.4%	4.5%	5.4%	5.6%	5.4%	69.0%	-2.7%
45017	Calhoun	3.7%	5.9%	6.5%	6.9%	6.8%	7.5%	104.3%	11.3%
45019	Charleston	3.2%	4.1%	4.7%	5.3%	5.4%	5.5%	72.1%	1.8%
45021	Cherokee	4.1%	7.0%	8.3%	8.7%	8.9%	8.0%	95.2%	-10.0%
45023	Chester	5.0%	7.7%	10.1%	11.0%	10.1%	9.4%	86.9%	-6.9%
45025	Chesterfield	4.5%	7.4%	7.9%	10.0%	10.2%	9.6%	113.1%	-5.3%
45027	Clarendon	5.3%	7.5%	7.7%	8.6%	8.9%	9.6%	82.2%	8.3%
45029	Colleton	3.8%	5.0%	6.1%	7.3%	7.3%	7.3%	94.6%	-0.2%
45031	Darlington	4.8%	6.2%	6.9%	8.2%	8.2%	8.9%	86.8%	8.4%
45033	Dillon	6.8%	9.2%	8.1%	9.6%	9.9%	9.7%	42.6%	-2.2%
45035	Dorchester	3.0%	4.1%	4.3%	4.9%	4.9%	5.2%	73.3%	6.4%
45037	Edgefield	3.6%	4.8%	5.1%	5.0%	6.0%	7.5%	109.1%	24.2%
45039	Fairfield	4.9%	8.4%	8.6%	10.6%	8.0%	7.9%	62.1%	-0.9%
45041	Florence	4.0%	5.4%	6.5%	7.8%	8.3%	9.1%	128.0%	10.2%
45043	Georgetown	5.3%	7.4%	8.2%	9.7%	9.4%	8.4%	57.7%	-11.5%
45045	Greenville	2.6%	3.7%	4.8%	5.4%	5.9%	5.6%	118.9%	-4.5%
45047	Greenwood	4.2%	6.8%	8.9%	9.3%	8.8%	9.1%	115.4%	3.4%
45049	Hampton	4.2%	6.2%	7.6%	9.5%	9.7%	8.6%	104.3%	-11.0%
45051	Horry	3.6%	4.9%	5.1%	5.5%	5.7%	5.5%	54.5%	-3.5%
45053	Jasper	3.5%	4.3%	5.1%	5.9%	5.5%	5.0%	45.8%	-8.3%
45055	Kershaw	3.7%	5.1%	6.1%	6.3%	6.2%	6.6%	78.8%	7.5%
45057	Lancaster	3.6%	5.4%	6.6%	9.0%	8.9%	8.5%	137.2%	-4.5%
45059	Laurens	3.2%	6.5%	7.6%	7.5%	7.2%	6.9%	115.3%	-4.6%
45061	Lee	5.6%	7.0%	7.5%	8.5%	8.8%	9.5%	69.7%	8.3%
45063	Lexington	2.7%	3.6%	3.9%	4.5%	4.8%	4.9%	83.4%	1.3%
45065	McCormick	6.2%	9.6%	10.9%	12.4%	11.2%	11.0%	77.8%	-1.1%
45067	Marion	9.2%	12.2%	11.1%	13.0%	13.8%	13.8%	50.2%	0.4%
45069	Marlboro	6.8%	9.5%	10.2%	13.1%	13.2%	11.7%	71.1%	-11.2%
45071	Newberry	4.3%	6.2%	7.3%	7.4%	7.3%	7.0%	63.6%	-4.7%
45073	Oconee	3.5%	5.4%	6.7%	7.5%	7.4%	8.6%	147.1%	15.6%
45075	Orangeburg	5.8%	8.6%	8.8%	9.9%	9.4%	9.6%	65.0%	1.5%
45077	Pickens	2.9%	5.0%	6.0%	6.8%	6.9%	6.7%	128.8%	-1.8%
45079	Richland	3.2%	4.2%	4.7%	5.6%	6.0%	6.0%	86.7%	0.3%
45081	Saluda	3.6%	5.2%	5.9%	6.4%	7.7%	7.0%	92.1%	-9.5%
45083	Spartanburg	3.5%	5.4%	5.9%	7.2%	7.6%	7.7%	119.1%	1.2%
45085	Sumter	4.2%	6.5%	7.3%	7.6%	8.0%	8.8%	109.8%	10.3%
45087	Union	5.0%	8.9%	10.6%	11.3%	12.3%	11.1%	121.7%	-9.4%
45089	Williamsburg	7.5%	10.2%	10.9%	13.0%	12.3%	11.4%	53.2%	-6.9%
45091	York	3.2%	4.8%	6.4%	7.3%	7.1%	6.6%	107.2%	-7.0%
	South Carolina	3.6%	5.2%	5.9%	6.7%	6.8%	6.8%	88.9%	0.0%
	United States	4.0%	4.7%	5.8%	6.0%	5.5%	5.1%	27.5%	-7.3%

Source: South Carolina Employment Security Commission: Labor Force and Employment.

Earnings per Worker (Dollars*)

FIPS	County	Year					Percent Change	
		2000	2001	2002	2003	2004	2000-2004	2003-2004
45001	Abbeville	27,438	26,393	25,708	26,082	26,874	-2.1%	3.0%
45003	Aiken	34,536	35,320	36,648	37,274	38,090	10.3%	2.2%
45005	Allendale	26,257	26,870	28,287	28,867	30,421	15.9%	5.4%
45007	Anderson	25,861	27,035	27,077	27,884	28,598	10.6%	2.6%
45009	Bamberg	20,875	21,302	22,342	22,338	23,203	11.2%	3.9%
45011	Barnwell	34,369	24,610	25,038	25,916	26,729	-22.2%	3.1%
45013	Beaufort	26,195	27,425	27,504	28,715	30,021	14.6%	4.5%
45015	Berkeley	28,817	29,783	30,794	32,206	33,551	16.4%	4.2%
45017	Calhoun	27,435	28,560	28,850	28,848	31,499	14.8%	9.2%
45019	Charleston	27,884	29,601	30,885	31,806	32,839	17.8%	3.2%
45021	Cherokee	26,433	26,823	27,377	28,503	29,839	12.9%	4.7%
45023	Chester	25,861	26,206	28,341	28,912	29,755	15.1%	2.9%
45025	Chesterfield	25,533	26,347	26,840	27,745	27,979	9.6%	0.8%
45027	Clarendon	20,366	21,559	22,154	23,110	24,350	19.6%	5.4%
45029	Colleton	23,104	23,828	23,846	24,412	25,853	11.9%	5.9%
45031	Darlington	29,047	29,990	30,761	31,870	32,767	12.8%	2.8%
45033	Dillon	20,474	21,414	22,407	23,318	23,992	17.2%	2.9%
45035	Dorchester	24,555	25,460	25,778	26,769	28,132	14.6%	5.1%
45037	Edgefield	23,434	23,881	24,489	25,590	26,091	11.3%	2.0%
45039	Fairfield	34,326	31,570	32,734	33,322	33,775	-1.6%	1.4%
45041	Florence	27,454	28,670	29,390	29,896	31,150	13.5%	4.2%
45043	Georgetown	24,001	24,780	26,313	27,155	27,956	16.5%	3.0%
45045	Greenville	31,124	32,421	33,139	33,704	34,625	11.2%	2.7%
45047	Greenwood	27,818	28,113	28,620	29,276	29,924	7.6%	2.2%
45049	Hampton	25,735	27,764	27,970	28,477	30,141	17.1%	5.8%
45051	Horry	23,127	24,180	24,802	25,682	26,360	14.0%	2.6%
45053	Jasper	22,088	22,990	23,959	25,045	27,381	24.0%	9.3%
45055	Kershaw	26,022	26,476	27,215	28,491	29,003	11.5%	1.8%
45057	Lancaster	26,394	27,560	27,915	28,975	29,869	13.2%	3.1%
45059	Laurens	25,189	25,506	25,822	26,555	27,802	10.4%	4.7%
45061	Lee	21,668	22,210	22,559	22,820	23,568	8.8%	3.3%
45063	Lexington	26,985	27,455	28,018	28,859	30,568	13.3%	5.9%
45065	McCormick	21,653	22,604	23,316	24,504	25,233	16.5%	3.0%
45067	Marion	22,320	23,037	23,577	24,123	24,754	10.9%	2.6%
45069	Marlboro	24,703	25,334	26,272	26,606	27,857	12.8%	4.7%
45071	Newberry	23,347	24,438	25,221	25,826	26,866	15.1%	4.0%
45073	Oconee	28,689	29,629	30,057	30,941	32,539	13.4%	5.2%
45075	Orangeburg	23,578	24,704	25,942	26,918	28,413	20.5%	5.6%
45077	Pickens	24,284	24,716	25,679	26,512	27,216	12.1%	2.7%
45079	Richland	29,414	30,420	31,508	32,608	33,852	15.1%	3.8%
45081	Saluda	20,419	21,454	21,355	22,080	23,616	15.7%	7.0%
45083	Spartanburg	30,219	31,529	32,674	33,113	34,649	14.7%	4.6%
45085	Sumter	24,547	25,281	26,678	27,587	28,655	16.7%	3.9%
45087	Union	23,280	24,092	24,708	25,504	26,293	12.9%	3.1%
45089	Williamsburg	22,665	23,437	24,161	24,727	25,713	13.4%	4.0%
45091	York	28,439	29,845	30,027	30,215	31,924	12.3%	5.7%
	South Carolina	27,712	28,722	29,523	30,333	31,447	13.5%	3.7%
	United States	34,718	35,582	36,150	37,173	38,798	11.7%	4.4%

*Dollar estimates have not been adjusted for inflation

Source: Bureau of Economic Analysis, Regional Economic Information System (REIS): TableCA30

Available at: <http://www.bea.gov/bea/regional/reis/>

Per Capita Personal Income (Dollars*)

FIPS	County	Year					Percent Change	
		2000	2001	2002	2003	2004	2000-2004	2003-2004
45001	Abbeville	22,967	23,133	21,358	19,969	21,000	-8.6%	5.2%
45003	Aiken	24,831	26,158	26,669	26,893	27,901	12.4%	3.7%
45005	Allendale	16,244	16,794	16,583	17,052	17,991	10.8%	5.5%
45007	Anderson	24,271	24,990	25,030	25,434	26,249	8.2%	3.2%
45009	Bamberg	17,395	17,763	18,004	18,913	19,927	14.6%	5.4%
45011	Barnwell	22,216	18,685	18,850	19,158	19,809	-10.8%	3.4%
45013	Beaufort	32,452	34,292	33,948	34,781	36,570	12.7%	5.1%
45015	Berkeley	20,157	21,384	22,842	24,019	25,286	25.4%	5.3%
45017	Calhoun	22,219	23,186	23,510	25,145	26,842	20.8%	6.7%
45019	Charleston	28,720	29,498	29,827	30,608	32,088	11.7%	4.8%
45021	Cherokee	20,313	20,519	20,650	21,353	22,562	11.1%	5.7%
45023	Chester	19,941	20,836	21,696	22,138	23,415	17.4%	5.8%
45025	Chesterfield	19,558	20,054	20,004	20,823	21,705	11.0%	4.2%
45027	Clarendon	17,902	18,630	18,621	19,568	20,692	15.6%	5.7%
45029	Colleton	19,103	19,783	19,804	20,355	21,662	13.4%	6.4%
45031	Darlington	22,115	22,887	23,109	23,621	24,558	11.0%	4.0%
45033	Dillon	17,965	18,526	18,499	19,428	20,342	13.2%	4.7%
45035	Dorchester	21,973	22,669	23,516	24,015	25,382	15.5%	5.7%
45037	Edgefield	18,921	19,987	20,062	20,361	21,397	13.1%	5.1%
45039	Fairfield	20,045	20,689	21,024	21,414	22,524	12.4%	5.2%
45041	Florence	23,795	24,777	25,396	26,040	27,359	15.0%	5.1%
45043	Georgetown	24,254	25,778	26,165	26,944	28,103	15.9%	4.3%
45045	Greenville	29,689	29,263	29,233	29,744	30,814	3.8%	3.6%
45047	Greenwood	23,090	23,363	23,456	23,834	24,935	8.0%	4.6%
45049	Hampton	18,551	19,190	19,504	19,765	20,905	12.7%	5.8%
45051	Horry	23,933	24,156	24,326	25,118	26,170	9.3%	4.2%
45053	Jasper	17,693	18,129	18,813	20,250	21,833	23.4%	7.8%
45055	Kershaw	23,355	24,519	25,284	25,849	27,204	16.5%	5.2%
45057	Lancaster	20,591	20,999	20,929	21,601	22,799	10.7%	5.5%
45059	Laurens	20,391	20,976	20,864	21,165	22,543	10.6%	6.5%
45061	Lee	17,225	17,717	17,501	18,626	19,395	12.6%	4.1%
45063	Lexington	28,901	28,641	29,034	29,633	31,282	8.2%	5.6%
45065	McCormick	17,308	17,809	17,749	18,151	19,383	12.0%	6.8%
45067	Marion	17,948	18,448	18,859	19,826	20,391	13.6%	2.9%
45069	Marlboro	16,841	17,790	17,627	18,558	19,334	14.8%	4.2%
45071	Newberry	20,605	21,365	20,772	21,602	23,122	12.2%	7.0%
45073	Oconee	24,107	25,156	25,694	26,563	27,736	15.1%	4.4%
45075	Orangeburg	19,711	20,737	21,434	22,171	23,181	17.6%	4.6%
45077	Pickens	21,068	22,256	22,799	23,304	24,135	14.6%	3.6%
45079	Richland	27,110	27,784	28,166	28,628	30,190	11.4%	5.5%
45081	Saluda	20,990	21,376	21,346	22,569	24,343	16.0%	7.9%
45083	Spartanburg	24,327	24,559	25,156	25,340	26,114	7.3%	3.1%
45085	Sumter	20,535	20,841	21,714	22,437	23,732	15.6%	5.8%
45087	Union	20,178	21,508	22,066	22,495	23,542	16.7%	4.7%
45089	Williamsburg	16,073	17,294	17,173	18,321	19,003	18.2%	3.7%
45091	York	25,942	26,301	27,290	27,778	28,714	10.7%	3.4%
	South Carolina	24,424	24,994	25,361	25,972	27,185	11.3%	4.7%
	United States	29,845	30,574	30,810	31,484	33,050	10.7%	5.0%

*Dollar estimates have not been adjusted for inflation; Source: Bureau of Economic Analysis, Regional Economic Information System (REIS): Table CA31, Available at <http://www.bea.gov/bea/regional/reis/>

Median Household Income (Dollars)

FIPS	County	Year				Percent Change	
		2000	2001	2002	2003	2000-2003	2002-2003
45001	Abbeville	33,309	31,327	31,244	30,469	-8.5%	-2.5%
45003	Aiken	38,913	38,086	38,534	39,253	0.9%	1.9%
45005	Allendale	22,149	21,099	20,727	20,920	-5.5%	0.9%
45007	Anderson	37,971	37,281	37,205	38,286	0.8%	2.9%
45009	Bamberg	25,079	24,045	24,300	24,762	-1.3%	1.9%
45011	Barnwell	29,417	28,494	27,607	26,456	-10.1%	-4.2%
45013	Beaufort	46,486	45,469	45,822	46,634	0.3%	1.8%
45015	Berkeley	40,309	39,475	40,161	42,023	4.3%	4.6%
45017	Calhoun	32,942	32,174	32,247	33,712	2.3%	4.5%
45019	Charleston	39,815	38,610	38,458	39,233	-1.5%	2.0%
45021	Cherokee	34,583	33,300	33,232	34,274	-0.9%	3.1%
45023	Chester	32,537	31,684	31,715	33,017	1.5%	4.1%
45025	Chesterfield	30,204	29,397	29,505	30,438	0.8%	3.2%
45027	Clarendon	27,318	26,268	25,896	26,721	-2.2%	3.2%
45029	Colleton	29,768	28,861	28,919	29,711	-0.2%	2.7%
45031	Darlington	31,369	30,698	30,776	31,347	-0.1%	1.9%
45033	Dillon	26,573	25,832	25,552	26,751	0.7%	4.7%
45035	Dorchester	42,756	42,082	42,886	44,534	4.2%	3.8%
45037	Edgefield	34,449	34,038	34,297	34,451	0.0%	0.4%
45039	Fairfield	30,425	29,521	29,960	30,857	1.4%	3.0%
45041	Florence	34,779	34,028	34,009	34,903	0.4%	2.6%
45043	Georgetown	36,396	34,714	35,008	36,458	0.2%	4.1%
45045	Greenville	42,544	41,996	41,658	41,984	-1.3%	0.8%
45047	Greenwood	35,469	34,354	34,109	34,578	-2.5%	1.4%
45049	Hampton	29,095	27,927	27,650	28,223	-3.0%	2.1%
45051	Horry	36,317	34,923	34,654	35,606	-2.0%	2.7%
45053	Jasper	29,228	27,910	27,117	28,555	-2.3%	5.3%
45055	Kershaw	39,074	38,483	39,040	40,288	3.1%	3.2%
45057	Lancaster	34,980	33,835	33,698	34,267	-2.0%	1.7%
45059	Laurens	33,267	32,613	32,320	32,479	-2.4%	0.5%
45061	Lee	26,549	25,513	25,144	26,015	-2.0%	3.5%
45063	Lexington	45,821	45,147	45,140	45,677	-0.3%	1.2%
45065	McCormick	31,487	29,712	29,805	30,393	-3.5%	2.0%
45067	Marion	26,403	25,309	25,008	26,232	-0.6%	4.9%
45069	Marlboro	26,896	25,982	25,993	26,912	0.1%	3.5%
45071	Newberry	33,347	32,300	32,231	33,137	-0.6%	2.8%
45073	Oconee	37,743	36,695	36,912	38,189	1.2%	3.5%
45075	Orangeburg	29,940	28,828	28,624	29,386	-1.9%	2.7%
45077	Pickens	37,615	36,861	37,054	37,795	0.5%	2.0%
45079	Richland	40,999	40,034	39,587	39,737	-3.1%	0.4%
45081	Saluda	34,087	32,359	31,324	31,614	-7.3%	0.9%
45083	Spartanburg	38,616	37,229	37,092	38,099	-1.3%	2.7%
45085	Sumter	33,286	32,188	31,948	32,807	-1.4%	2.7%
45087	Union	31,850	30,839	30,801	31,499	-1.1%	2.3%
45089	Williamsburg	24,779	24,006	23,748	24,712	-0.3%	4.1%
45091	York	44,750	44,019	44,619	45,662	2.0%	2.3%
	South Carolina	37,283	36,953	37,442	38,003	1.9%	1.5%
	United States	41,990	42,228	42,409	43,318	3.2%	2.1%

Source: U.S. Census Bureau, Small Area Income and Poverty Estimates.
 Available at: <http://www.census.gov/hhes/www/saipa/tables.html>

Transfer Payments (Dollars*)

FIPS		Year					Percent Change	
		2000	2001	2002	2003	2004	2000-2004	2003-2004
45001	Abbeville	146,518	167,870	147,047	117,905	127,459	-	8.1%
45003	Aiken	528,448	585,597	640,918	677,041	736,613	39.4%	8.8%
45005	Allendale	51,284	54,939	59,468	62,173	67,036	30.7%	7.8%
45007	Anderson	599,325	670,238	738,574	774,978	837,144	39.7%	8.0%
45009	Bamberg	76,685	84,190	90,342	92,646	99,391		
45011	Barnwell	100,440	109,397	117,135	122,362	129,503	28.9%	5.8%
45013	Beaufort	425,534	476,625	526,527	571,817	618,214	45.3%	8.1%
45015	Berkeley	372,430	422,912	472,603	504,430	551,863		
45017	Calhoun	52,583	57,942	63,557	67,768	74,269	41.2%	9.6%
45019	Charleston	1,087,810	1,194,867	1,298,475	1,363,737	1,473,615	35.5%	8.1%
45021	Cherokee	186,646	208,681	229,775	242,357	262,151	40.5%	8.2%
45023	Chester	137,742	152,479	168,402	175,648	189,201	37.4%	7.7%
45025	Chesterfield	173,341	188,531	203,077	214,931	232,767	34.3%	8.3%
45027	Clarendon	143,749	158,919	174,505	184,791	200,164		
45029	Colleton	170,006	185,781	202,929	215,204	233,289	37.2%	8.4%
45031	Darlington	282,350	310,743	335,355	349,817	373,765	32.4%	6.8%
45033	Dillon	143,650	155,540	164,058	171,846	184,679	28.6%	7.5%
45035	Dorchester	300,115	338,050	374,070	396,395	446,955	48.9%	12.8%
45037	Edgefield	72,327	78,268	82,984	88,152	96,150	32.9%	9.1%
45039	Fairfield	95,774	106,895	115,803	122,575	130,910	36.7%	6.8%
45041	Florence	534,180	589,747	642,471	675,047	742,639	39.0%	10.0%
45043	Georgetown	271,901	308,048	338,732	363,139	391,253		
45045	Greenville	1,214,543	1,346,852	1,479,985	1,556,845	1,705,654	40.4%	9.6%
45047	Greenwood	246,409	273,402	301,995	315,708	339,520	37.8%	7.5%
45049	Hampton	90,109	97,814	107,318	113,148	121,302	34.6%	7.2%
45051	Horry	736,180	829,204	916,588	983,576	1,086,239	47.6%	10.4%
45053	Jasper	61,516	69,313	76,004	82,631	94,026	52.8%	13.8%
45055	Kershaw	185,293	206,143	225,346	238,530	264,048	42.5%	10.7%
45057	Lancaster	220,044	248,899	276,059	294,747	316,714	43.9%	7.5%
45059	Laurens	277,202	309,621	338,931	350,818	388,947	40.3%	10.9%
45061	Lee	86,800	95,283	102,766	107,720	117,927	35.9%	9.5%
45063	Lexington	614,558	687,451	759,375	810,358	890,441	44.9%	9.9%
45065	McCormick	44,886	49,917	54,126	55,830	59,505	32.6%	6.6%
45067	Marion	173,180	190,397	203,547	215,393	227,579	31.4%	5.7%
45069	Marlboro	127,985	139,277	148,485	156,932	168,658	31.8%	7.5%
45071	Newberry	142,237	156,442	170,038	177,795	192,266	35.2%	8.1%
45073	Oconee	255,857	287,135	318,974	337,447	368,108	43.9%	9.1%
45075	Orangeburg	388,955	430,753	465,314	487,258	521,664	34.1%	7.1%
45077	Pickens	330,919	373,029	410,123	431,160	472,748	42.9%	9.6%
45079	Richland	1,060,972	1,164,293	1,277,125	1,332,431	1,452,602	36.9%	9.0%
45081	Saluda	64,118	70,547	75,628	78,471	86,155	34.4%	9.8%
45083	Spartanburg	885,352	985,081	1,084,462	1,133,567	1,220,549	37.9%	7.7%
45085	Sumter	378,471	421,544	462,149	483,254	526,631	39.1%	9.0%
45087	Union	134,439	149,596	164,283	169,817	182,608	35.8%	7.5%
45089	Williamsburg	168,046	182,316	195,807	203,023	215,158	28.0%	6.0%
45091	York	499,200	559,817	628,803	671,364	724,266	45.1%	7.9%
	South Carolina	14,340,109	15,930,385	17,430,038	18,342,582	19,942,345	39.1%	8.7%
	United States	1,018,106,000	1,117,218,000	1,219,954,000	1,282,540,000	1,361,666,000	33.7%	6.2%

*Dollar estimates have not been adjusted for inflation

Source: Bureau of Economic Analysis, Regional Economic Information System (REIS): TableCA35
 Available at: <http://www.bea.gov/beat/regional/reis/>

Poverty Rate

FIPS	County	Year				Percent Change	
		2000	2001	2002	2003	2000-2003	2002-2003
45001	Abbeville	12.1%	13.5%	13.7%	13.6%	12.4%	-0.7%
45003	Aiken	12.1%	12.8%	13.1%	13.5%	11.6%	3.1%
45005	Allendale	28.8%	31.2%	31.3%	28.4%	-1.4%	-9.3%
45007	Anderson	10.5%	11.7%	12.2%	11.9%	13.3%	-2.5%
45009	Bamberg	21.2%	22.1%	22.0%	21.2%	0.0%	-3.6%
45011	Barnwell	17.5%	18.3%	17.6%	17.2%	-1.7%	-2.3%
45013	Beaufort	10.3%	11.6%	11.3%	11.1%	7.8%	-1.8%
45015	Berkeley	11.3%	11.8%	11.9%	11.7%	3.5%	-1.7%
45017	Calhoun	15.1%	16.2%	14.9%	14.3%	-5.3%	-4.0%
45019	Charleston	13.7%	14.6%	14.5%	14.1%	2.9%	-2.8%
45021	Cherokee	12.9%	14.5%	15.2%	14.8%	14.7%	-2.6%
45023	Chester	14.2%	15.2%	15.6%	15.6%	9.9%	0.0%
45025	Chesterfield	16.4%	17.0%	17.3%	17.2%	4.9%	-0.6%
45027	Clarendon	20.6%	22.2%	22.9%	21.3%	3.4%	-7.0%
45029	Colleton	19.3%	20.4%	19.9%	18.6%	-3.6%	-6.5%
45031	Darlington	17.9%	18.2%	18.4%	18.2%	1.7%	-1.1%
45033	Dillon	21.9%	22.6%	21.6%	20.4%	-6.8%	-5.6%
45035	Dorchester	10.1%	10.9%	10.8%	11.2%	10.9%	3.7%
45037	Edgefield	15.7%	16.7%	16.6%	15.8%	0.6%	-4.8%
45039	Fairfield	15.8%	17.0%	16.2%	15.9%	0.6%	-1.9%
45041	Florence	15.9%	16.7%	16.6%	16.3%	2.5%	-1.8%
45043	Georgetown	14.8%	15.4%	15.3%	14.7%	-0.7%	-3.9%
45045	Greenville	9.8%	10.7%	11.5%	12.0%	22.4%	4.3%
45047	Greenwood	12.5%	13.6%	14.0%	13.9%	11.2%	-0.7%
45049	Hampton	20.0%	21.5%	21.6%	19.4%	-3.0%	-10.2%
45051	Horry	12.6%	14.3%	13.8%	13.1%	4.0%	-5.1%
45053	Jasper	22.2%	27.8%	28.9%	19.8%	-10.8%	-31.5%
45055	Kershaw	10.9%	11.6%	11.5%	12.0%	10.1%	4.3%
45057	Lancaster	12.9%	13.5%	13.8%	13.7%	6.2%	-0.7%
45059	Laurens	13.2%	15.0%	15.7%	14.8%	12.1%	-5.7%
45061	Lee	22.7%	24.4%	24.0%	20.5%	-9.7%	-14.6%
45063	Lexington	9.0%	9.8%	10.2%	10.5%	16.7%	2.9%
45065	McCormick	16.5%	18.0%	17.3%	16.1%	-2.4%	-6.9%
45067	Marion	21.5%	23.3%	22.4%	20.5%	-4.7%	-8.5%
45069	Marlboro	20.0%	21.0%	20.5%	20.2%	1.0%	-1.5%
45071	Newberry	13.5%	14.6%	14.4%	14.6%	8.1%	1.1%
45073	Oconee	10.1%	11.2%	11.7%	11.7%	15.8%	0.0%
45075	Orangeburg	19.3%	20.7%	20.8%	19.8%	2.6%	-4.8%
45077	Pickens	10.2%	11.6%	11.9%	11.5%	12.7%	-3.4%
45079	Richland	11.9%	12.9%	13.4%	13.9%	16.8%	3.7%
45081	Saluda	15.2%	18.2%	17.6%	15.1%	-0.7%	-14.2%
45083	Spartanburg	11.0%	12.2%	12.7%	12.9%	17.3%	1.6%
45085	Sumter	15.2%	16.3%	16.5%	16.3%	7.2%	-1.2%
45087	Union	12.8%	13.7%	14.1%	14.3%	11.7%	1.4%
45089	Williamsburg	24.0%	24.6%	24.0%	22.9%	-4.6%	-4.6%
45091	York	9.1%	10.0%	10.7%	11.3%	24.2%	5.6%
	South Carolina	12.8%	13.8%	14.0%	13.8%	7.8%	-1.4%
	United States	11.3%	11.7%	12.1%	12.5%	10.6%	3.3%

Source: U.S. Census Bureau, Small Area Income and Poverty Estimates.
 Available at: <http://www.census.gov/hhes/www/saipe/tables.html>

Patents per 10,000 Employees

FIPS	County	Year					
		2000	2001	2002	2003	2004	2005
45001	Abbeville County	0.8	0.0	1.8	0.9	0.9	0.9
45003	Aiken County	5.3	6.9	5.2	6.6	4.2	2.8
45005	Allendale County	0.0	0.0	0.0	3.2	0.0	0.0
45007	Anderson County	7.5	10.3	10.3	10.2	10.5	10.1
45009	Bamberg County	0.0	5.0	1.7	3.3	5.0	1.6
45011	Barnwell County	0.0	0.0	1.1	2.3	1.2	1.1
45013	Beaufort County	6.0	4.9	4.7	3.2	4.8	2.6
45015	Berkeley County	2.2	2.4	3.5	1.5	3.4	1.5
45017	Calhoun County	1.5	0.0	0.0	0.0	0.0	0.0
45019	Charleston County	10.6	9.7	11.7	8.3	9.0	6.0
45021	Cherokee County	1.2	0.8	0.9	1.8	1.3	0.4
45023	Chester County	1.3	2.0	0.0	0.7	2.1	2.0
45025	Chesterfield County	3.8	2.3	0.0	0.0	2.4	0.0
45027	Clarendon County	0.0	0.9	1.7	0.0	2.6	0.8
45029	Colleton County	2.0	2.0	0.7	2.7	1.3	1.3
45031	Darlington County	7.6	7.6	7.6	5.5	8.3	3.9
45033	Dillon County	0.8	0.0	0.0	0.0	0.9	0.8
45035	Dorchester County	5.0	5.4	5.6	3.7	5.1	2.9
45037	Edgefield County	2.0	3.1	3.1	0.0	2.0	1.0
45039	Fairfield County	1.0	0.0	0.0	0.0	0.0	0.0
45041	Florence County	13.9	10.7	8.5	9.5	8.9	10.1
45043	Georgetown County	1.6	5.0	3.3	7.4	3.2	2.2
45045	Greenville County	11.5	16.9	21.4	20.4	18.1	17.4
45047	Greenwood County	3.5	0.7	4.9	4.1	4.7	3.6
45049	Hampton County	3.8	4.0	0.0	1.4	1.4	1.4
45051	Horry County	0.7	3.0	3.2	2.4	2.5	2.7
45053	Jasper County	1.1	0.0	0.0	4.5	0.0	2.0
45055	Kershaw County	3.1	5.5	3.9	0.8	3.8	2.2
45057	Lancaster County	1.7	1.8	2.2	1.9	2.2	0.0
45059	Laurens County	0.9	1.3	2.3	1.0	1.0	1.3
45061	Lee County	3.9	0.0	0.0	0.0	0.0	0.0
45063	Lexington County	4.0	4.6	2.6	2.9	3.1	2.0
45065	McCormick County	2.9	6.0	0.0	3.1	6.5	0.0
45067	Marion County	0.0	0.0	0.0	0.0	0.0	0.0
45069	Marlboro County	0.9	0.9	1.8	1.8	0.0	0.0
45071	Newberry County	3.7	2.5	4.4	1.2	0.6	0.0
45073	Oconee County	9.9	11.2	11.2	12.2	12.6	6.4
45075	Orangeburg County	6.6	0.6	2.2	3.9	1.1	3.2
45077	Pickens County	10.4	11.6	13.2	13.8	14.9	10.6
45079	Richland County	6.0	6.0	4.5	5.7	5.9	4.4
45081	Saluda County	0.0	1.1	3.5	3.5	1.2	0.0
45083	Spartanburg County	10.0	12.7	16.2	19.6	14.5	15.0
45085	Sumter County	1.4	1.2	1.5	1.9	1.2	2.3
45087	Union County	1.5	0.8	0.8	0.8	0.0	0.9
45089	Williamsburg County	0.0	0.0	0.8	0.7	1.5	0.0
45091	York County	8.0	7.6	10.1	6.8	4.9	5.3
	South Carolina	6.2	7.0	7.8	7.5	7.0	5.9
	United States	12.9	13.4	13.5	13.6	13.0	11.1

Source: United States Patent and Trademark Office, Patent Electronic Business Center
 Available at: <http://www.uspto.gov/ebc/index.html>

Total Patents per County

FIPS	County	Year					
		2000	2001	2002	2003	2004	2005
45001	Abbeville County	1	0	2	1	1	1
45003	Aiken County	35	45	34	45	29	20
45005	Allendale County	0	0	0	1	0	0
45007	Anderson County	61	81	79	78	81	78
45009	Bamberg County	0	3	1	2	3	1
45011	Barnwell County	0	0	1	2	1	1
45013	Beaufort County	30	24	24	17	27	16
45015	Berkeley County	14	15	22	10	23	10
45017	Calhoun County	1	0	0	0	0	0
45019	Charleston County	157	138	171	126	141	96
45021	Cherokee County	3	2	2	4	3	1
45023	Chester County	2	3	0	1	3	3
45025	Chesterfield County	7	4	0	0	4	0
45027	Clarendon County	0	1	2	0	3	1
45029	Colleton County	3	3	1	4	2	2
45031	Darlington County	23	22	22	16	24	11
45033	Dillon County	1	0	0	0	1	1
45035	Dorchester County	23	24	26	18	26	15
45037	Edgefield County	2	3	3	0	2	1
45039	Fairfield County	1	0	0	0	0	0
45041	Florence County	81	60	48	54	51	57
45043	Georgetown County	4	12	8	18	8	6
45045	Greenville County	232	328	407	389	350	341
45047	Greenwood County	11	2	14	12	14	11
45049	Hampton County	3	3	0	1	1	1
45051	Horry County	7	29	32	25	27	31
45053	Jasper County	1	0	0	4	0	2
45055	Kershaw County	8	14	10	2	10	6
45057	Lancaster County	5	5	6	5	6	0
45059	Laurens County	3	4	7	3	3	4
45061	Lee County	3	0	0	0	0	0
45063	Lexington County	46	52	29	34	37	24
45065	McCormick County	1	2	0	1	2	0
45067	Marion County	0	0	0	0	0	0
45069	Marlboro County	1	1	2	2	0	0
45071	Newberry County	6	4	7	2	1	0
45073	Oconee County	31	34	33	36	37	19
45075	Orangeburg County	25	2	8	14	4	12
45077	Pickens County	59	63	69	72	78	56
45079	Richland County	93	91	69	89	93	71
45081	Saluda County	0	1	3	3	1	0
45083	Spartanburg County	125	153	193	236	177	181
45085	Sumter County	6	5	6	8	5	10
45087	Union County	2	1	1	1	0	1
45089	Williamsburg County	0	0	1	1	2	0
45091	York County	68	64	86	59	43	48
	South Carolina	1,185	1,298	1,429	1,396	1,324	1,139
	United States	176,082	184,046	184,418	187,047	181,319	157,740

Source: United States Patent and Trademark Office, Patent Electronic Business Center

Available at: <http://www.uspto.gov/ebc/index.html>

SBIR and STTR Total Phase I and II Dollar Awards

FIPS	County	Year					
		2000 Total Dollars	2001 Total Dollars	2002 Total Dollars	2003 Total Dollars	2004 Total Dollars	2005 Total Dollars
45001	Abbeville	\$0	\$0	\$0	\$0	\$0	\$0
45003	Aiken	\$69,914	\$0	\$0	\$99,852	\$0	\$0
45005	Allendale	\$0	\$0	\$0	\$0	\$0	\$0
45007	Anderson	\$99,990	\$200,000	\$1,314,405	\$0	\$826,043	\$569,993
45009	Bamberg	\$0	\$0	\$0	\$0	\$0	\$0
45011	Barnwell	\$0	\$0	\$0	\$0	\$0	\$0
45013	Beaufort	\$711,825	\$3,136,523	\$139,644	\$899,878	\$1,242,614	\$584,999
45015	Berkeley	\$0	\$0	\$0	\$0	\$0	\$0
45017	Calhoun	\$0	\$0	\$0	\$0	\$0	\$0
45019	Charleston	\$1,854,724	\$749,594	\$4,097,162	\$1,304,472	\$1,221,101	\$4,985,811
45021	Cherokee	\$0	\$0	\$0	\$0	\$0	\$0
45023	Chester	\$0	\$0	\$0	\$0	\$0	\$0
45025	Chesterfield	\$0	\$0	\$0	\$0	\$0	\$0
45027	Clarendon	\$0	\$0	\$0	\$0	\$0	\$0
45029	Colleton	\$0	\$0	\$0	\$0	\$0	\$0
45031	Darlington	\$0	\$0	\$0	\$0	\$0	\$0
45033	Dillon	\$0	\$0	\$0	\$0	\$0	\$0
45035	Dorchester	\$0	\$0	\$0	\$0	\$0	\$0
45037	Edgefield	\$0	\$99,975	\$499,998	\$0	\$0	\$99,622
45039	Fairfield	\$0	\$0	\$0	\$0	\$0	\$0
45041	Florence	\$0	\$93,745	\$0	\$0	\$0	\$0
45043	Georgetown	\$0	\$0	\$95,062	\$0	\$0	\$0
45045	Greenville	\$0	\$0	\$0	\$0	\$0	\$0
45047	Greenwood	\$0	\$173,400	\$0	\$926,630	\$185,746	\$0
45049	Hampton	\$0	\$0	\$0	\$0	\$0	\$0
45051	Horry	\$0	\$0	\$0	\$0	\$0	\$0
45053	Jasper	\$60,600	\$0	\$0	\$0	\$0	\$0
45055	Kershaw	\$0	\$0	\$0	\$0	\$100,000	\$750,000
45057	Lancaster	\$0	\$0	\$0	\$0	\$0	\$0
45059	Laurens	\$0	\$0	\$0	\$0	\$0	\$0
45061	Lee	\$0	\$0	\$0	\$0	\$0	\$0
45063	Lexington	\$230,000	\$1,200,000	\$0	\$0	\$0	\$0
45065	McCormick	\$0	\$0	\$0	\$0	\$0	\$0
45067	Marion	\$0	\$0	\$0	\$0	\$0	\$0
45069	Marlboro	\$0	\$0	\$0	\$0	\$0	\$0
45071	Newberry	\$0	\$0	\$0	\$0	\$0	\$0
45073	Oconee	\$399,892	\$0	\$0	\$0	\$0	\$0
45075	Orangeburg	\$0	\$0	\$0	\$0	\$0	\$0
45077	Pickens	\$0	\$0	\$0	\$199,860	\$499,983	\$0
45079	Richland	\$550,000	\$645,758	\$1,961,128	\$5,102,978	\$4,245,527	\$4,213,057
45081	Saluda	\$0	\$0	\$0	\$0	\$0	\$0
45083	Spartanburg	\$0	\$0	\$0	\$0	\$0	\$0
45085	Sumter	\$0	\$0	\$0	\$0	\$0	\$0
45087	Union	\$0	\$0	\$0	\$0	\$0	\$0
45089	Williamsburg	\$0	\$0	\$0	\$0	\$0	\$0
45091	York	\$0	\$0	\$0	\$99,955	\$69,588	\$509,807
	South Carolina	\$3,976,945	\$6,398,970	\$8,107,399	\$8,633,625	\$8,390,602	\$11,713,289
	United States	\$1,108,787,548	\$1,222,097,359	\$1,591,478,031	\$1,861,050,297	\$2,223,301,340	\$2,085,560,074

Source: U.S. Small Business Administration, Technology Resources Network

Available at: http://tech-net.sba.gov/tech-net/public/dsp_search.cfm

SBIR and STTR Phase I and II Dollar Awards per 1,000 Employees

\$ amount is SBIR \$/1,000 Employees

FIPS	County	Year					
		2000	2001	2002	2003	2004	2005
45001	Abbeville	\$0	\$0	\$0	\$0	\$0	\$0
45003	Aiken	\$1,054	\$0	\$0	\$1,474	\$0	\$0
45005	Allendale	\$0	\$0	\$0	\$0	\$0	\$0
45007	Anderson	\$1,232	\$2,550	\$17,106	\$0	\$10,664	\$7,367
45009	Bamberg	\$0	\$0	\$0	\$0	\$0	\$0
45011	Barnwell	\$0	\$0	\$0	\$0	\$0	\$0
45013	Beaufort	\$14,268	\$63,867	\$2,710	\$16,748	\$22,024	\$9,645
45015	Berkeley	\$0	\$0	\$0	\$0	\$0	\$0
45017	Calhoun	\$0	\$0	\$0	\$0	\$0	\$0
45019	Charleston	\$12,545	\$5,244	\$28,049	\$8,643	\$7,831	\$31,232
45021	Cherokee	\$0	\$0	\$0	\$0	\$0	\$0
45023	Chester	\$0	\$0	\$0	\$0	\$0	\$0
45025	Chesterfield	\$0	\$0	\$0	\$0	\$0	\$0
45027	Clarendon	\$0	\$0	\$0	\$0	\$0	\$0
45029	Colleton	\$0	\$0	\$0	\$0	\$0	\$0
45031	Darlington	\$0	\$0	\$0	\$0	\$0	\$0
45033	Dillon	\$0	\$0	\$0	\$0	\$0	\$0
45035	Dorchester	\$0	\$0	\$0	\$0	\$0	\$0
45037	Edgefield	\$0	\$10,349	\$51,177	\$0	\$0	\$9,719
45039	Fairfield	\$0	\$0	\$0	\$0	\$0	\$0
45041	Florence	\$0	\$1,667	\$0	\$0	\$0	\$0
45043	Georgetown	\$0	\$0	\$3,954	\$0	\$0	\$0
45045	Greenville	\$0	\$0	\$0	\$0	\$0	\$0
45047	Greenwood	\$0	\$5,730	\$0	\$31,942	\$6,279	\$0
45049	Hampton	\$0	\$0	\$0	\$0	\$0	\$0
45051	Horry	\$0	\$0	\$0	\$0	\$0	\$0
45053	Jasper	\$6,779	\$0	\$0	\$0	\$0	\$0
45055	Kershaw	\$0	\$0	\$0	\$0	\$3,768	\$27,675
45057	Lancaster	\$0	\$0	\$0	\$0	\$0	\$0
45059	Laurens	\$0	\$0	\$0	\$0	\$0	\$0
45061	Lee	\$0	\$0	\$0	\$0	\$0	\$0
45063	Lexington	\$2,003	\$10,654	\$0	\$0	\$0	\$0
45065	McCormick	\$0	\$0	\$0	\$0	\$0	\$0
45067	Marion	\$0	\$0	\$0	\$0	\$0	\$0
45069	Marlboro	\$0	\$0	\$0	\$0	\$0	\$0
45071	Newberry	\$0	\$0	\$0	\$0	\$0	\$0
45073	Oconee	\$12,809	\$0	\$0	\$0	\$0	\$0
45075	Orangeburg	\$0	\$0	\$0	\$0	\$0	\$0
45077	Pickens	\$0	\$0	\$0	\$3,832	\$9,536	\$0
45079	Richland	\$3,526	\$4,250	\$12,851	\$32,939	\$26,906	\$26,147
45081	Saluda	\$0	\$0	\$0	\$0	\$0	\$0
45083	Spartanburg	\$0	\$0	\$0	\$0	\$0	\$0
45085	Sumter	\$0	\$0	\$0	\$0	\$0	\$0
45087	Union	\$0	\$0	\$0	\$0	\$0	\$0
45089	Williamsburg	\$0	\$0	\$0	\$0	\$0	\$0
45091	York	\$0	\$0	\$0	\$1,157	\$792	\$5,629
	South Carolina	\$2,091	\$3,473	\$4,412	\$4,625	\$4,417	\$6,042
	United States	\$8,100	\$8,925	\$11,660	\$13,512	\$15,966	\$14,715

Source: U.S. Small Business Administration, Technology Resources Network, Available at: http://tech-net.sba.gov/tech-net/public/dsp_search.cfm